

0. MIPAS Daily Report for level 0 products

[0.1 General Info](#)

[0.2 Instrument Operational Performance Parameters](#)

[0.3 ADF monitoring](#)

0.1 General Info

This report contains a daily analysis on parameters extracted from MIPAS level 0 data (The MIP_NL__0P product).

0.1.1 Report summary

The table below shows general characteristics of the data that are included into this report.

Item	Value
Report version	v1.6 08-11-2010
Time of report generation	03APR2011 05:24:45
Data source version	KSPT_L0/4504-N
Processing scope for products	29MAR2011 00:00:00 to 30MAR2011 00:00:00
Start time of first product within scope	29MAR2011 01:35:37
Stop time of last product within scope	30MAR2011 01:01:20
Total number of level 0 products	14
Number of level 0 products with errors	2

0.1.2 Product Quality Indicators per product

The following table shows a summary for each product used in this report.

#	Product name	Start time	Stop time	Prod err	ISP err sign	ISP miss sign	ISP disc sign	rs sign
0	MIP_NL__0PNPDE20110329_013537_000043603101_00031_47459_3329.N1	29MAR2011 01:35:37	29MAR2011 02:48:17	0	0	0	0	0
1	MIP_NL__0PNPDE20110329_024744_000061483101_00032_47460_3330.N1	29MAR2011 02:47:44	29MAR2011 04:30:11	0	0	0	0	0
2	MIP_NL__0PNPDE20110329_042938_000060413101_00033_47461_3331.N1	29MAR2011 04:29:38	29MAR2011 06:10:19	0	0	0	0	0
3	MIP_NL__0PNPDK20110329_060946_000040843101_00034_47462_4683.N1	29MAR2011 06:09:46	29MAR2011 07:17:50	0	0	0	0	0
4	MIP_NL__0PNPDK20110329_071717_000061313101_00035_47463_4684.N1	29MAR2011 07:17:17	29MAR2011 08:59:28	1	1	0	0	0
5	MIP_NL__0PNPDK20110329_085844_000059623101_00036_47464_4685.N1	29MAR2011 08:58:44	29MAR2011 10:38:06	0	0	0	0	0
6	MIP_NL__0PNPDK20110329_103722_000060623101_00037_47465_4686.N1	29MAR2011 10:37:22	29MAR2011 12:18:24	0	0	0	0	0
7	MIP_NL__0PNPDK20110329_121751_000059123101_00038_47466_4687.N1	29MAR2011 12:17:51	29MAR2011 13:56:22	0	0	0	0	0
8	MIP_NL__0PNPDK20110329_135551_000058873101_00039_47467_4688.N1	29MAR2011 13:55:51	29MAR2011 15:33:58	0	0	0	0	0
9	MIP_NL__0PNPDK20110329_153226_000059433101_00040_47468_4689.N1	29MAR2011 15:32:26	29MAR2011 17:11:29	0	0	0	0	0
10	MIP_NL__0PNPDK20110329_171033_000059503101_00041_47469_4693.N1	29MAR2011 17:10:33	29MAR2011 18:49:42	1	1	0	0	0
11	MIP_NL__0PNPDK20110329_174025_000041573101_00041_47469_4691.N1	29MAR2011 17:40:25	29MAR2011 18:49:42	0	0	0	0	0
12	MIP_NL__0PNPDK20110329_184848_000059793101_00042_47470_4692.N1	29MAR2011 18:48:48	29MAR2011 20:28:27	0	0	0	0	0
13	MIP_NL__0PNPDE20110329_232033_000060483101_00044_47472_3332.N1	29MAR2011 23:20:33	30MAR2011 01:01:20	0	0	0	0	0

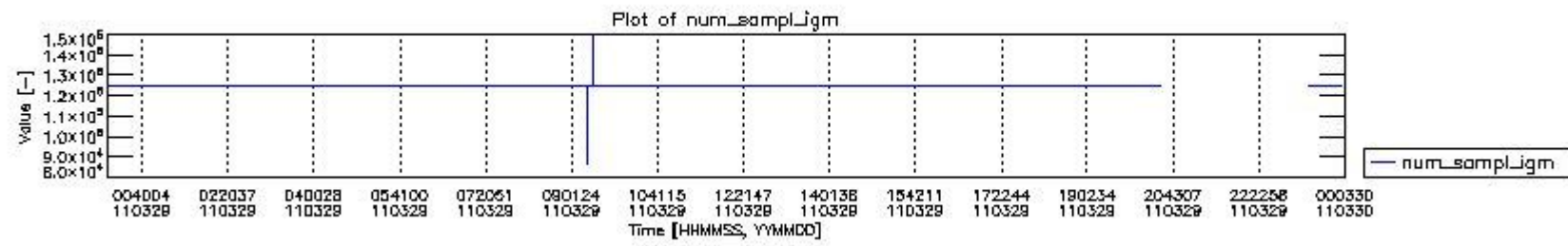
0.2 Instrument Operational Performance Parameters

The following plots give an overview of various instrument parameters for this day. The instrument parameters are part of the auxiliary data field within the source packets of the MIP_NL__0P product. The auxiliary data is normally included twice per interferogram. Note that only the first packet is currently included in monitoring.

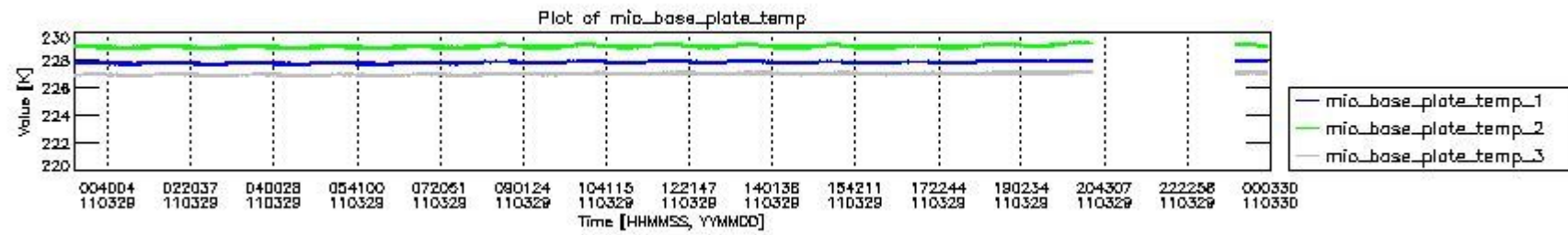
The following table shows the counts of various interferogram number of samples

Number of igm samples	Count [#]	Count [%]
86608	1	0.0026275684
95638	1	0.0026275684
115770	1	0.0026275684
124800	35369	92.934468

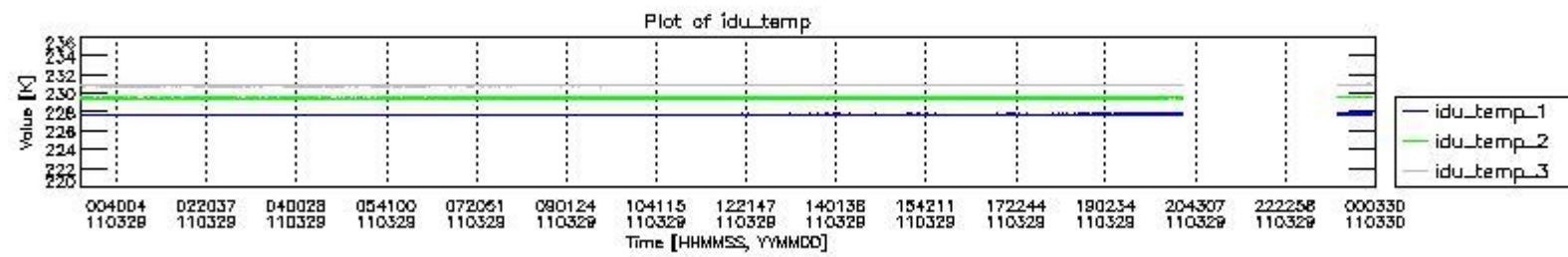
124803	2683	7.0497661
127233	1	0.0026275684
147365	1	0.0026275684
149798	1	0.0026275684



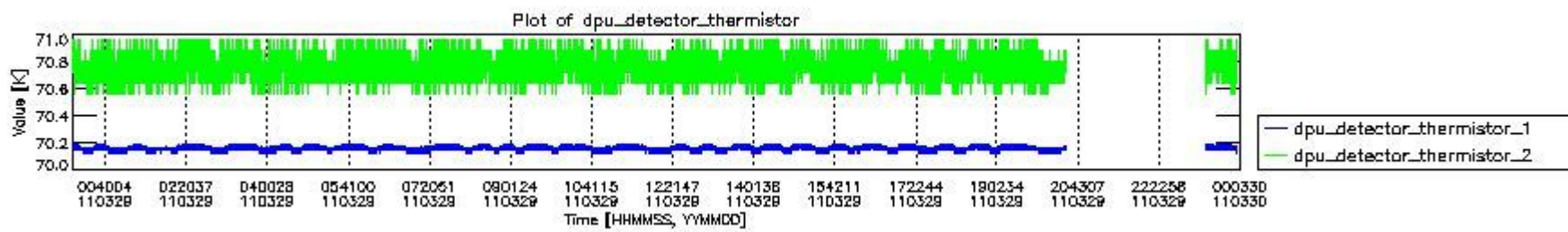
mipas_daily_report_level0_KSPT_L0_4504_N_20110329_0.PNG



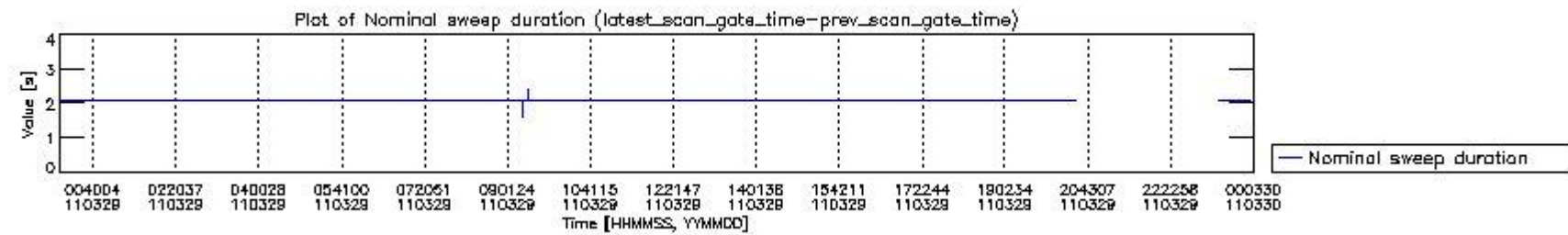
mipas_daily_report_level0_KSPT_L0_4504_N_20110329_1.PNG



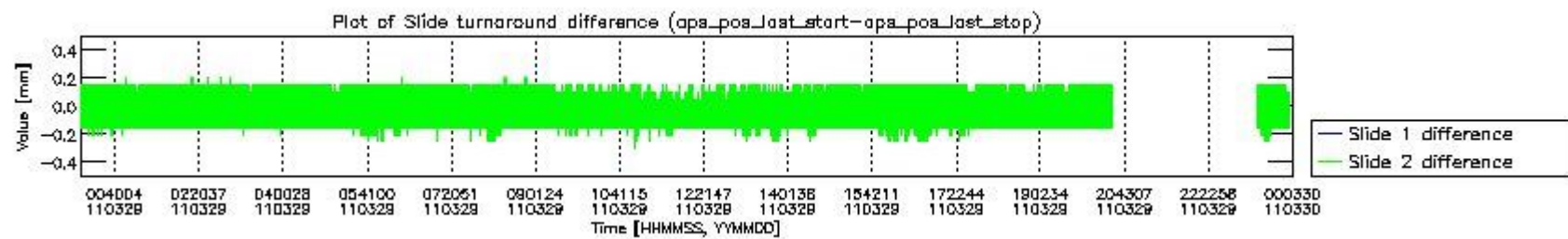
mipas_daily_report_level0_KSPT_L0_4504_N_20110329_2.PNG



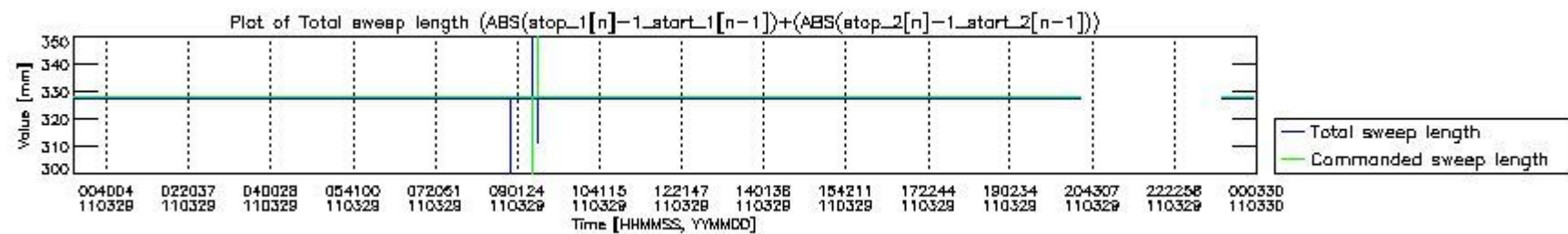
mipas_daily_report_level0_KSPT_L0_4504_N_20110329_3.PNG



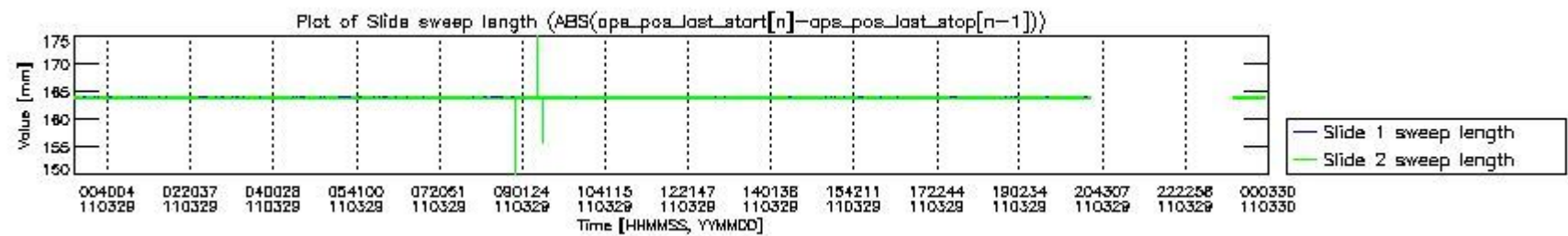
mipas_daily_report_level0_KSPT_L0_4504_N_20110329_4.PNG



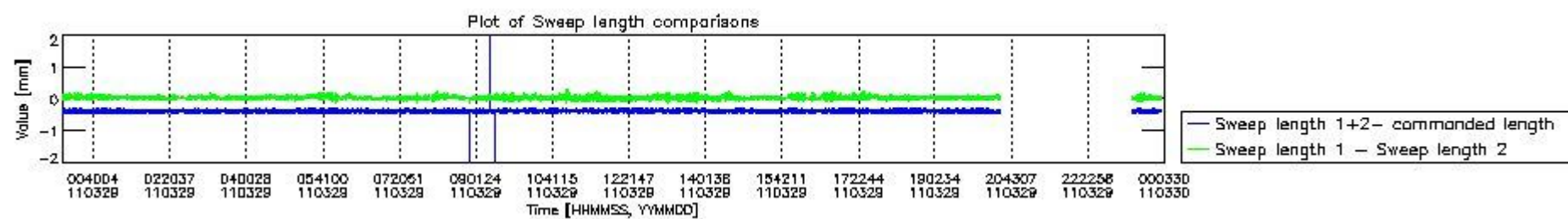
mipas_daily_report_level0_KSPT_L0_4504_N_20110329_5.PNG



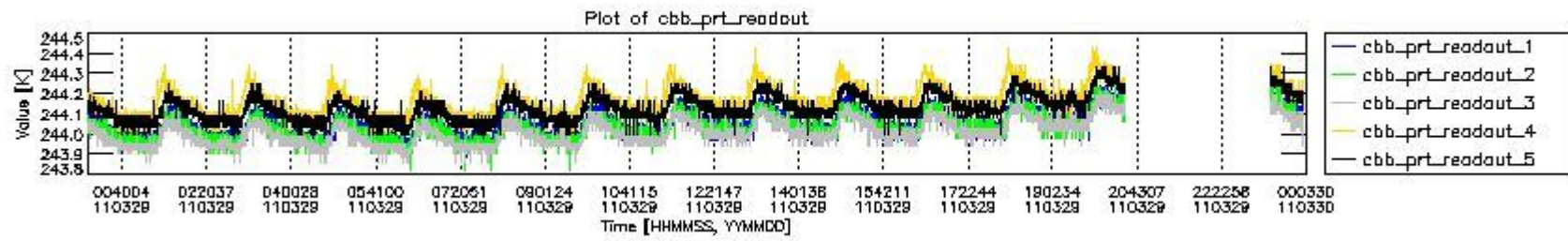
mipas_daily_report_level0_KSPT_L0_4504_N_20110329_6.PNG



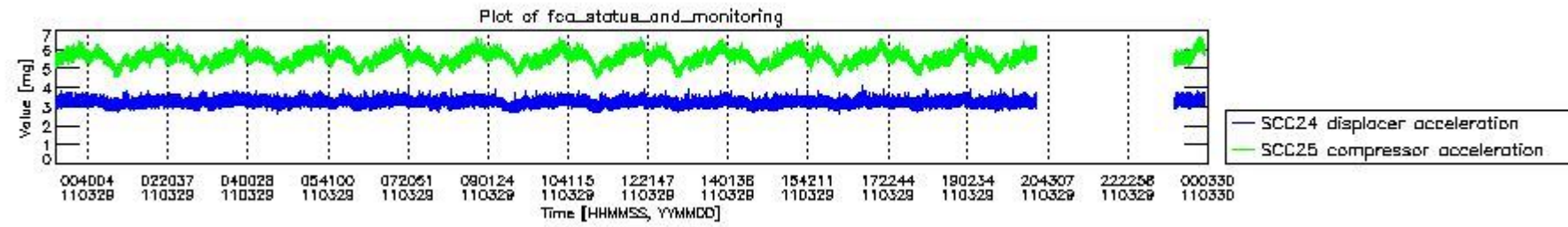
mipas_daily_report_level0_KSPT_L0_4504_N_20110329_7.PNG



mipas_daily_report_level0_KSPT_L0_4504_N_20110329_8.PNG



mipas_daily_report_level0_KSPT_L0_4504_N_20110329_9.PNG

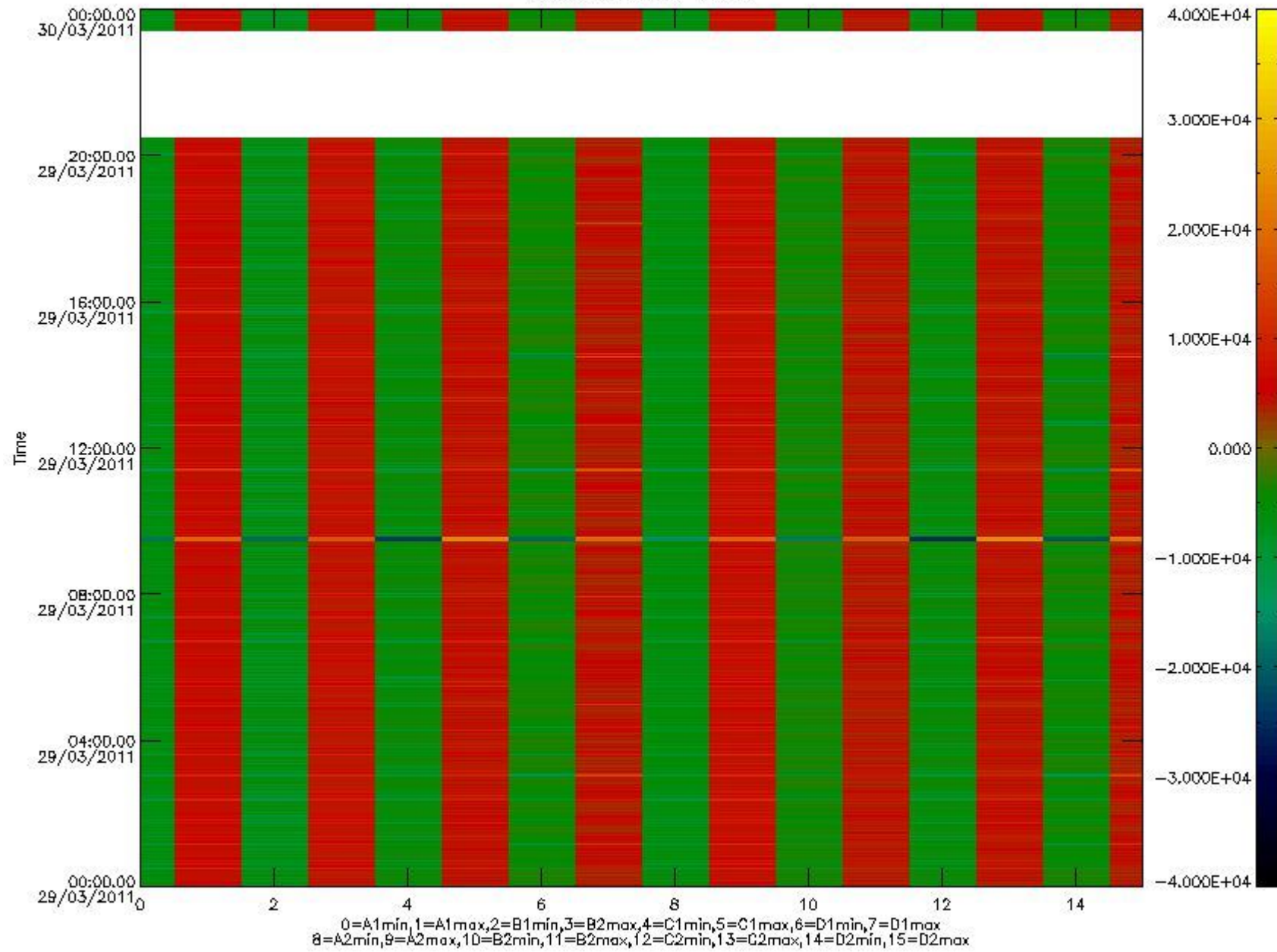


mipas_daily_report_level0_KSPT_L0_4504_N_20110329_10.PNG

The following table shows channel statistics for all channels for this day.

Channel	Min	Max	ADC
A1	-17897	18938	16bit
B1	-20073	17320	16bit
C1	-24196	24200	16bit
D1	-32768	32767	16bit
A2	-15538	19135	16bit
B2	-18253	17929	16bit
C2	-25201	24926	16bit
D2	-32768	32767	16bit

MIPNLOP_MIPSOUPAC_aux_fields_1gm_cal, channel statistics plot
Colour indicates value.



mipas_daily_report_level0_KSPT_L0_4504_N_20110329_11.PNG

0.3 ADF monitoring

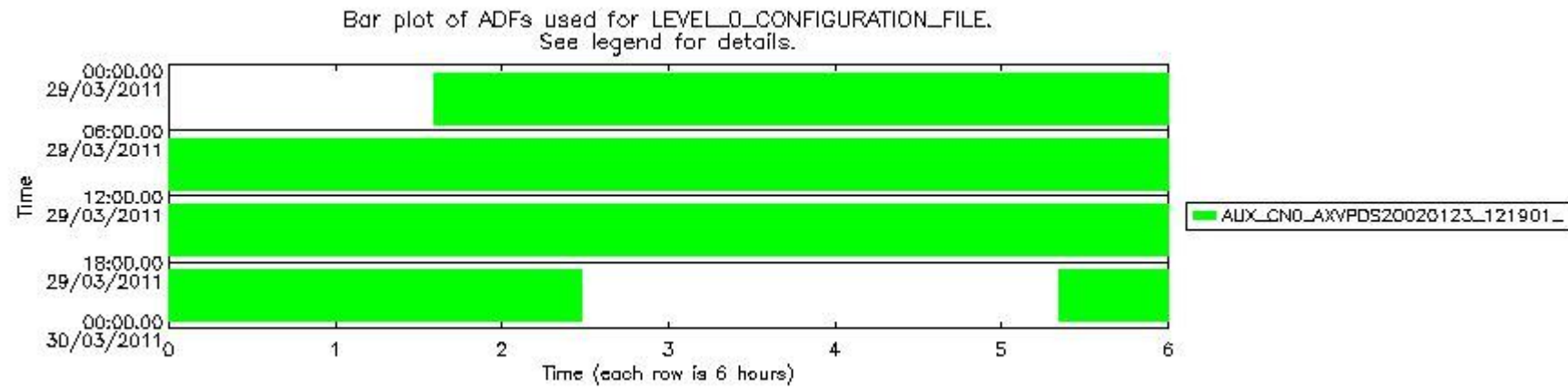
The use of ADFs is shown in two ways:

1. By means of two tables that can be used to find the ADF used for a specific product.
2. By means of plots that show changes in ADF using colours.

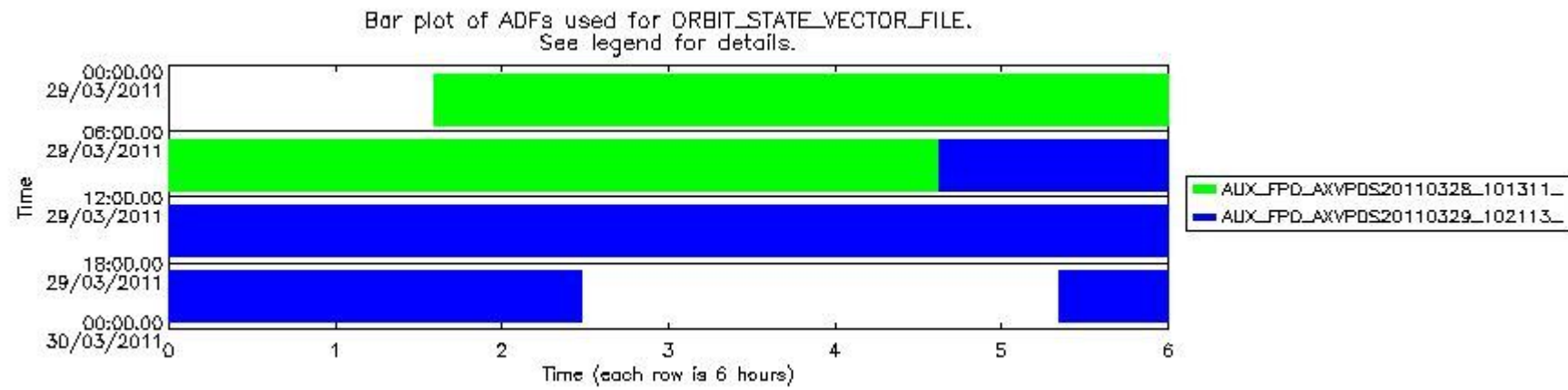
Number	ADF
0	AUX_CN0_AXVPDS20020123_121901_20020101_000000_20200101_000000
1	AUX_FPO_AXVPDS20110328_101311_20110327_194409_20110406_201744
2	AUX_FPO_AXVPDS20110329_102113_20110328_190725_20110407_212114

Number	Product name	#CN0	#FPO
--------	--------------	------	------

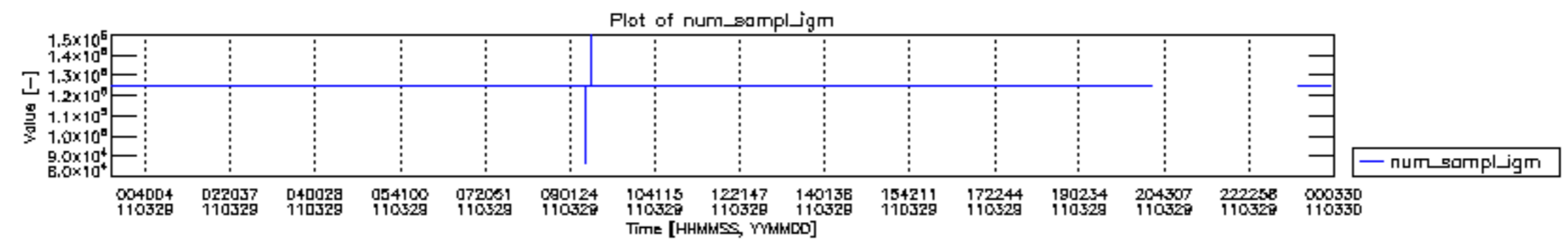
0	MIP_NL__0PNPDE20110329_013537_000043603101_00031_47459_3329.N1	0	1
1	MIP_NL__0PNPDE20110329_024744_000061483101_00032_47460_3330.N1	0	1
2	MIP_NL__0PNPDE20110329_042938_000060413101_00033_47461_3331.N1	0	1
3	MIP_NL__0PNPDK20110329_060946_000040843101_00034_47462_4683.N1	0	1
4	MIP_NL__0PNPDK20110329_071717_000061313101_00035_47463_4684.N1	0	1
5	MIP_NL__0PNPDK20110329_085844_000059623101_00036_47464_4685.N1	0	1
6	MIP_NL__0PNPDK20110329_103722_000060623101_00037_47465_4686.N1	0	2
7	MIP_NL__0PNPDK20110329_121751_000059123101_00038_47466_4687.N1	0	2
8	MIP_NL__0PNPDK20110329_135551_000058873101_00039_47467_4688.N1	0	2
9	MIP_NL__0PNPDK20110329_153226_000059433101_00040_47468_4689.N1	0	2
10	MIP_NL__0PNPDK20110329_171033_000059503101_00041_47469_4693.N1	0	2
11	MIP_NL__0PNPDK20110329_174025_000041573101_00041_47469_4691.N1	0	2
12	MIP_NL__0PNPDK20110329_184848_000059793101_00042_47470_4692.N1	0	2
13	MIP_NL__0PNPDE20110329_232033_000060483101_00044_47472_3332.N1	0	2

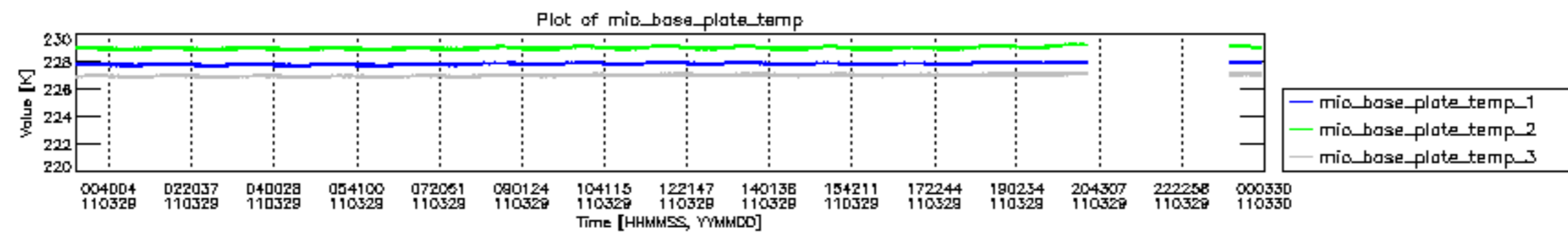


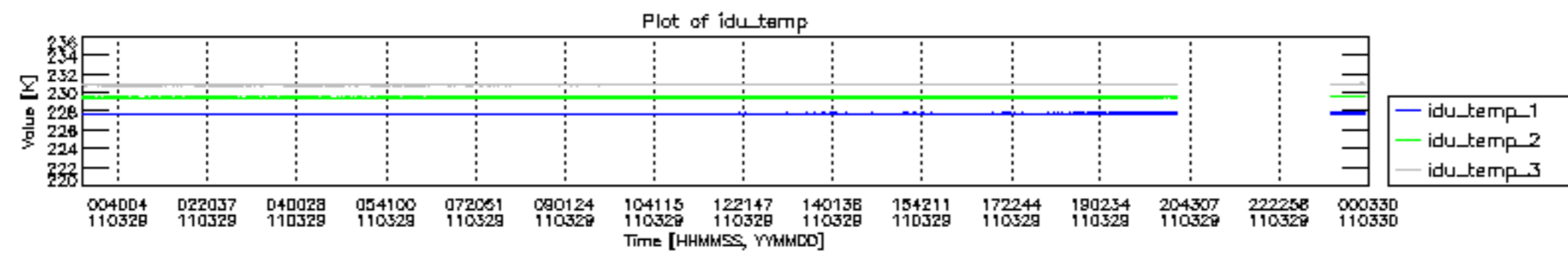
mipas_daily_report_level0_KSPT_L0_4504_N_20110329_12.PNG

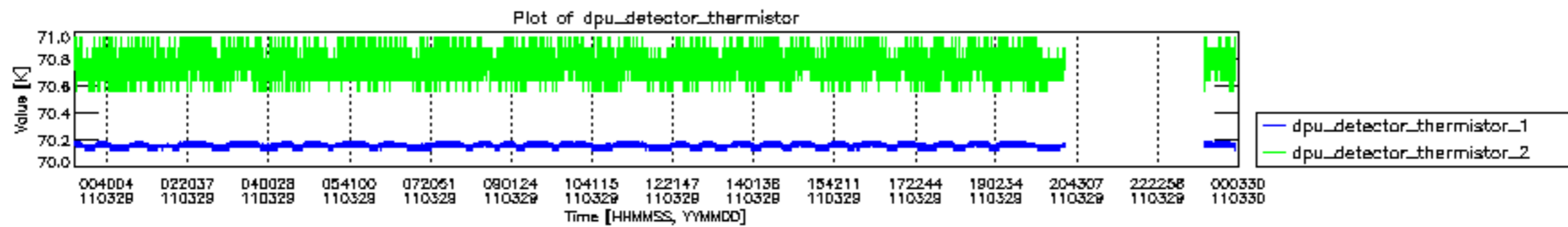


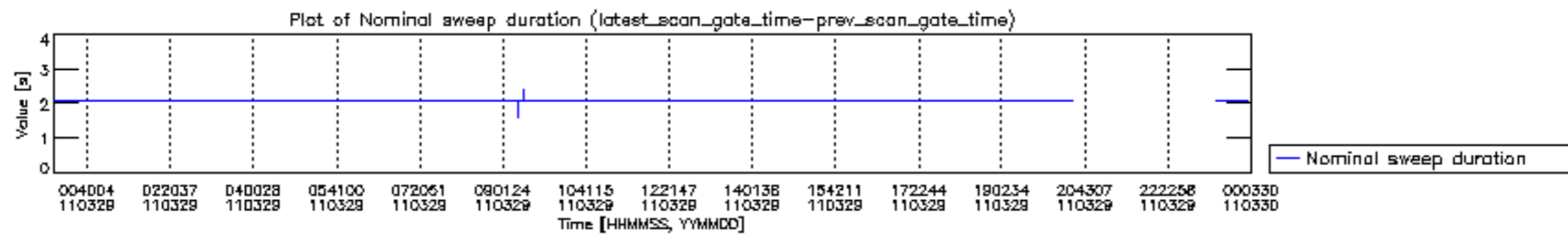
mipas_daily_report_level0_KSPT_L0_4504_N_20110329_13.PNG

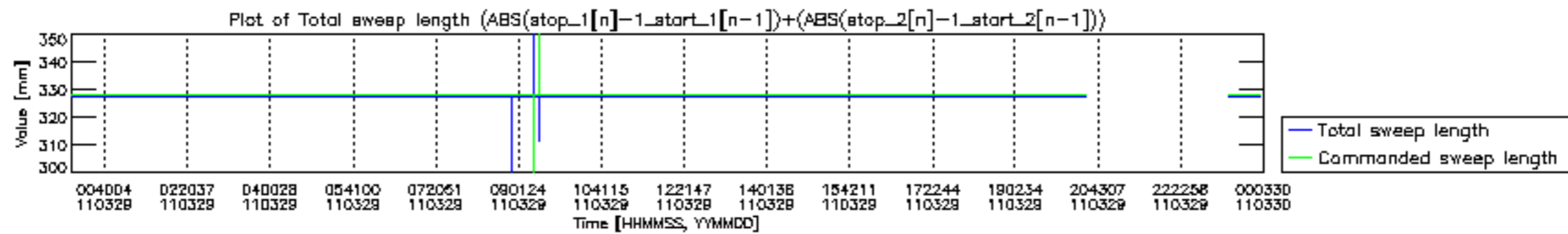


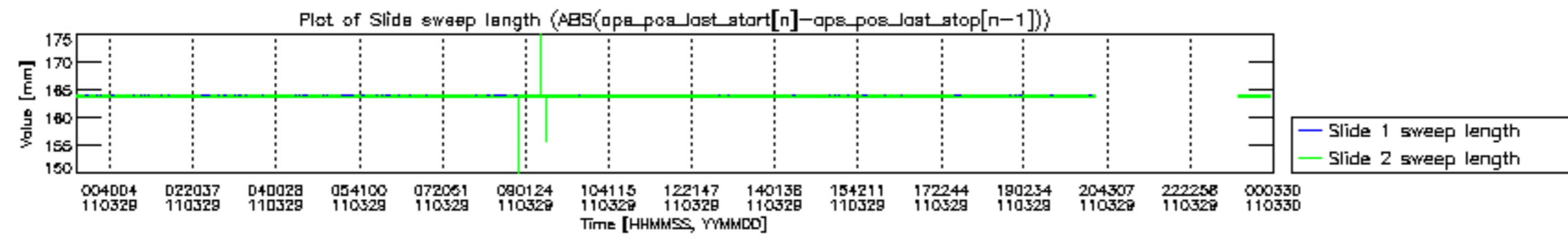


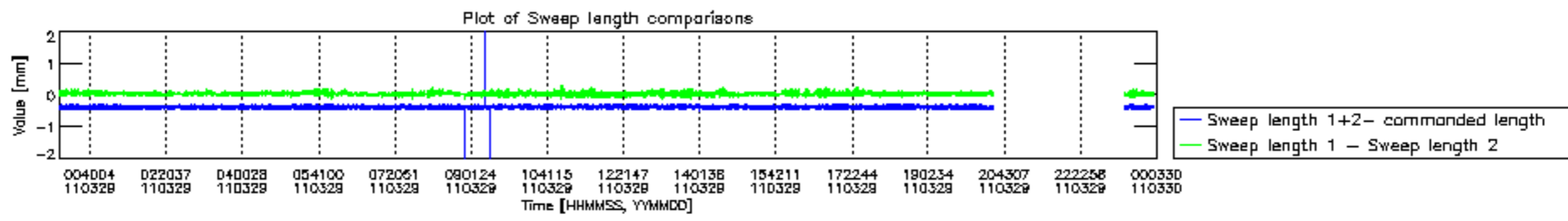


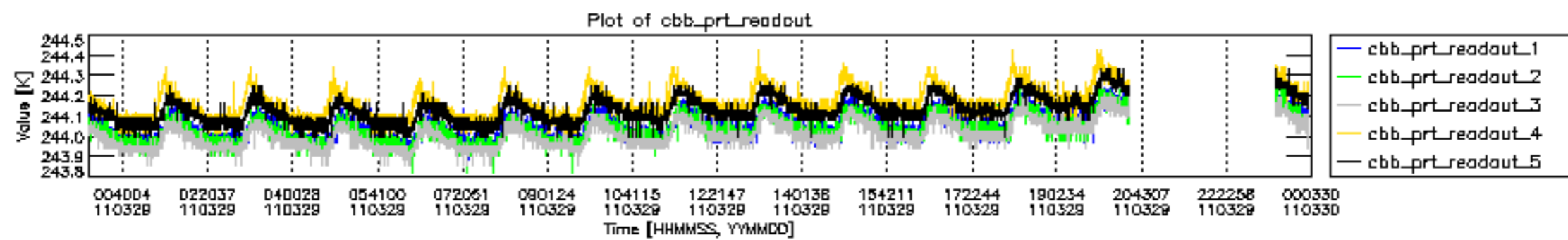


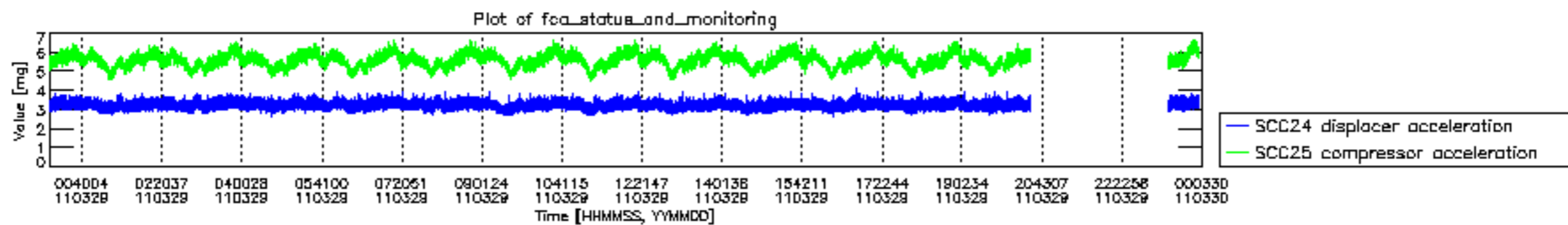






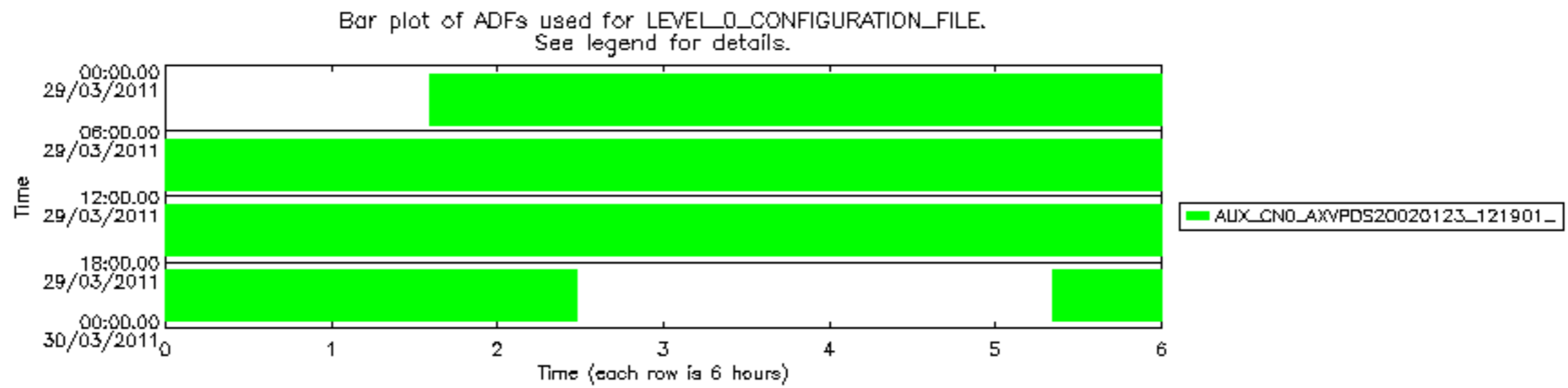






MIPNLOP_MIPSOUPAC_aux_fields_igm_cal, channel statistics plot
 Colour indicates value.





Bar plot of ADFs used for ORBIT_STATE_VECTOR_FILE.
See legend for details.

