

0. MIPAS Daily Report for level 0 products

[0.1 General Info](#)

[0.2 Instrument Operational Performance Parameters](#)

[0.3 ADF monitoring](#)

0.1 General Info

This report contains a daily analysis on parameters extracted from MIPAS level 0 data (The MIP_NL__0P product).

0.1.1 Report summary

The table below shows general characteristics of the data that are included into this report.

Item	Value
Report version	v1.6 08-11-2010
Time of report generation	26MAR2011 05:23:42
Data source version	KSPT_L0/4504-N
Processing scope for products	21MAR2011 00:00:00 to 22MAR2011 00:00:00
Start time of first product within scope	21MAR2011 01:28:50
Stop time of last product within scope	22MAR2011 00:54:56
Total number of level 0 products	16
Number of level 0 products with errors	0

0.1.2 Product Quality Indicators per product

The following table shows a summary for each product used in this report.

#	Product name	Start time	Stop time	Prod err	ISP err sign	ISP miss sign	ISP disc sign	rs sign
0	MIP_NL__0PNPDE20110321_012850_000043983100_00347_47344_3150.N1	21MAR2011 01:28:50	21MAR2011 02:42:09	0	0	0	0	0
1	MIP_NL__0PNPDE20110321_014920_000031693100_00348_47345_3153.N1	21MAR2011 01:49:20	21MAR2011 02:42:09	0	0	0	0	0
2	MIP_NL__0PNPDE20110321_024135_000060853100_00348_47345_3151.N1	21MAR2011 02:41:35	21MAR2011 04:23:01	0	0	0	0	0
3	MIP_NL__0PNPDE20110321_042227_000060873100_00349_47346_3152.N1	21MAR2011 04:22:27	21MAR2011 06:03:55	0	0	0	0	0
4	MIP_NL__0PNPDK20110321_060321_000040993100_00350_47347_4620.N1	21MAR2011 06:03:21	21MAR2011 07:11:40	0	0	0	0	0
5	MIP_NL__0PNPDK20110321_071106_000061043100_00351_47348_4621.N1	21MAR2011 07:11:06	21MAR2011 08:52:50	0	0	0	0	0
6	MIP_NL__0PNPDK20110321_085217_000059293100_00352_47349_4622.N1	21MAR2011 08:52:17	21MAR2011 10:31:05	0	0	0	0	0
7	MIP_NL__0PNPDK20110321_103022_000060623100_00353_47350_4623.N1	21MAR2011 10:30:22	21MAR2011 12:11:24	0	0	0	0	0
8	MIP_NL__0PNPDK20110321_121050_000058783100_00354_47351_4624.N1	21MAR2011 12:10:50	21MAR2011 13:48:49	0	0	0	0	0
9	MIP_NL__0PNPDK20110321_134750_000059063100_00355_47352_4625.N1	21MAR2011 13:47:50	21MAR2011 15:26:16	0	0	0	0	0
10	MIP_NL__0PNPDK20110321_152438_000059683100_00356_47353_4626.N1	21MAR2011 15:24:38	21MAR2011 17:04:06	0	0	0	0	0
11	MIP_NL__0PNPDK20110321_170310_000059203100_00357_47354_4627.N1	21MAR2011 17:03:10	21MAR2011 18:41:50	0	0	0	0	0
12	MIP_NL__0PNPDK20110321_184041_000061003100_00358_47355_4628.N1	21MAR2011 18:40:41	21MAR2011 20:22:21	0	0	0	0	0
13	MIP_NL__0PNPDE20110321_202043_000042993100_00359_47356_3154.N1	21MAR2011 20:20:43	21MAR2011 21:32:22	0	0	0	0	0
14	MIP_NL__0PNPDE20110321_213119_000061883100_00359_47356_3155.N1	21MAR2011 21:31:19	21MAR2011 23:14:27	0	0	0	0	0
15	MIP_NL__0PNPDE20110321_231328_000060873100_00360_47357_3156.N1	21MAR2011 23:13:28	22MAR2011 00:54:56	0	0	0	0	0

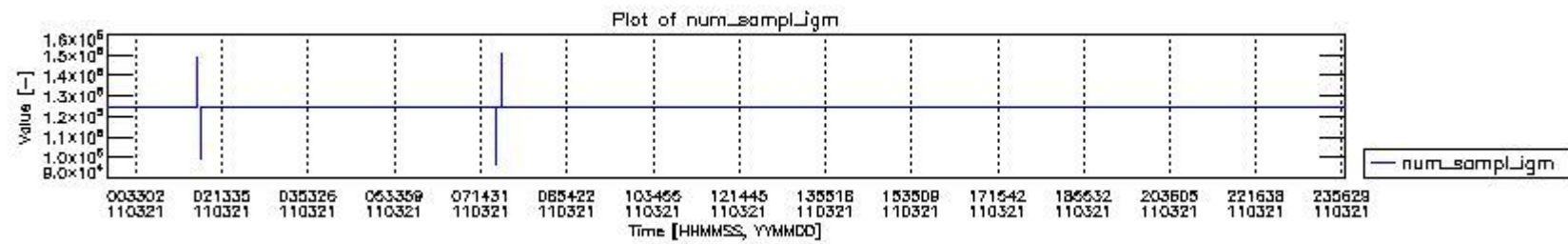
0.2 Instrument Operational Performance Parameters

The following plots give an overview of various instrument parameters for this day. The instrument parameters are part of the auxiliary data field within the source packets of the MIP_NL__0P product. The auxiliary data is normally included twice per interferogram. Note that only the first packet is currently included in monitoring.

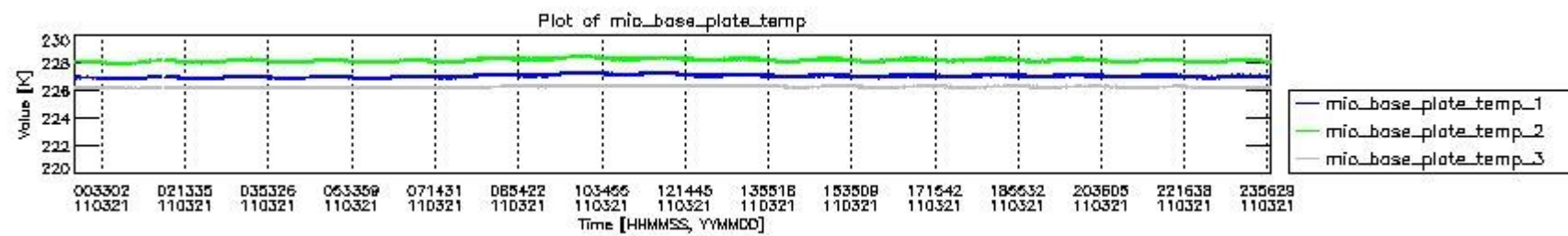
The following table shows the counts of various interferogram number of samples

Number of igm samples	Count [#]	Count [%]
96274	1	0.0024151089
98922	1	0.0024151089

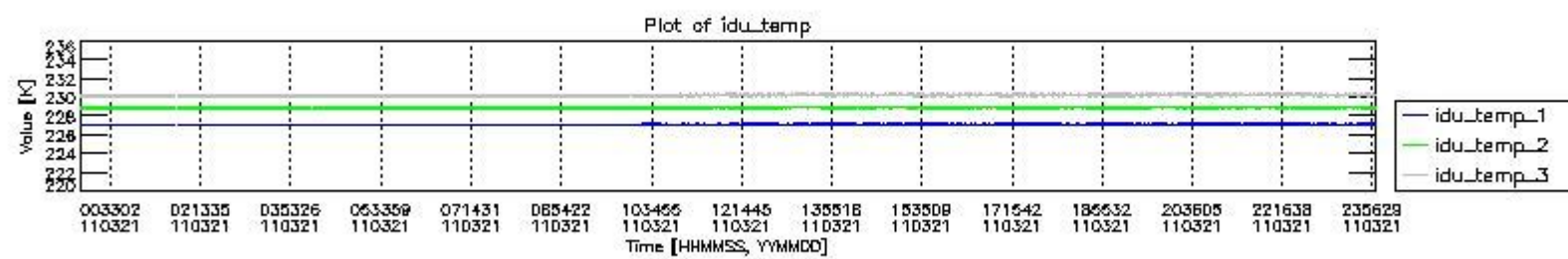
100471	1	0.0024151089
120603	1	0.0024151089
123548	1	0.0024151089
124174	1	0.0024151089
124800	38471	92.911655
124803	2923	7.0593634
126638	1	0.0024151089
127456	1	0.0024151089
146770	1	0.0024151089
147588	1	0.0024151089
148608	1	0.0024151089
150244	1	0.0024151089



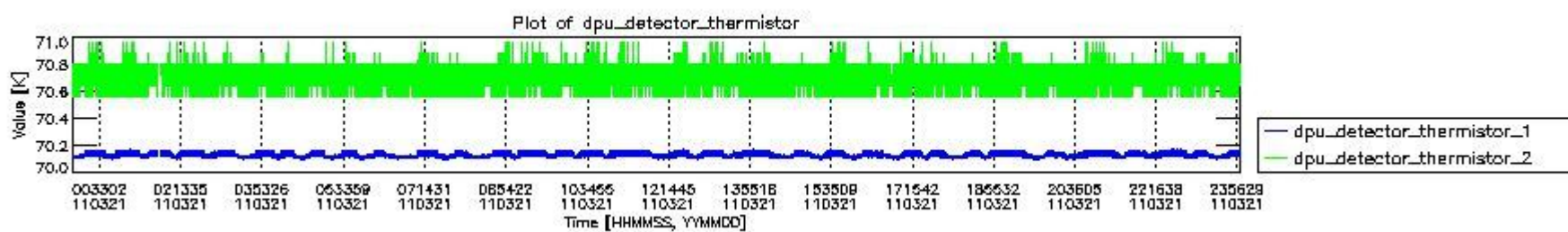
mipas_daily_report_level0_KSPT_L0_4504_N_20110321_0.PNG



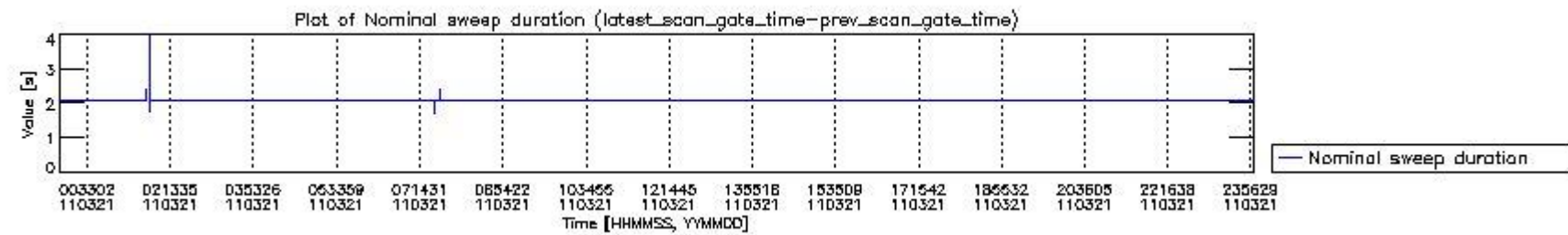
mipas_daily_report_level0_KSPT_L0_4504_N_20110321_1.PNG



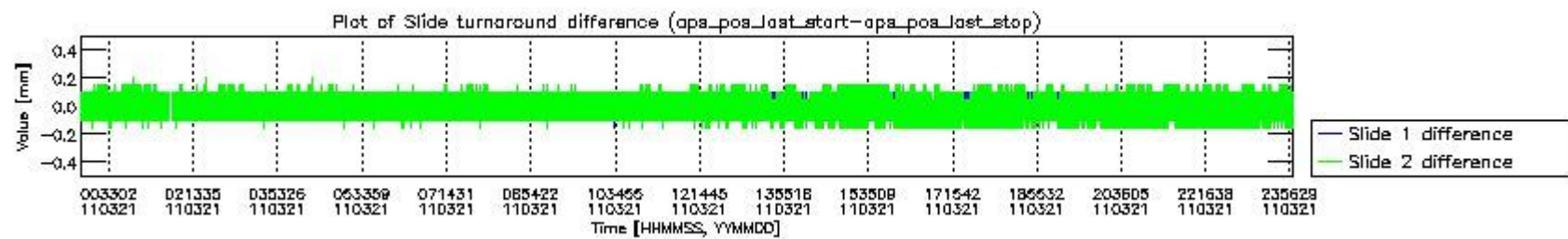
mipas_daily_report_level0_KSPT_L0_4504_N_20110321_2.PNG



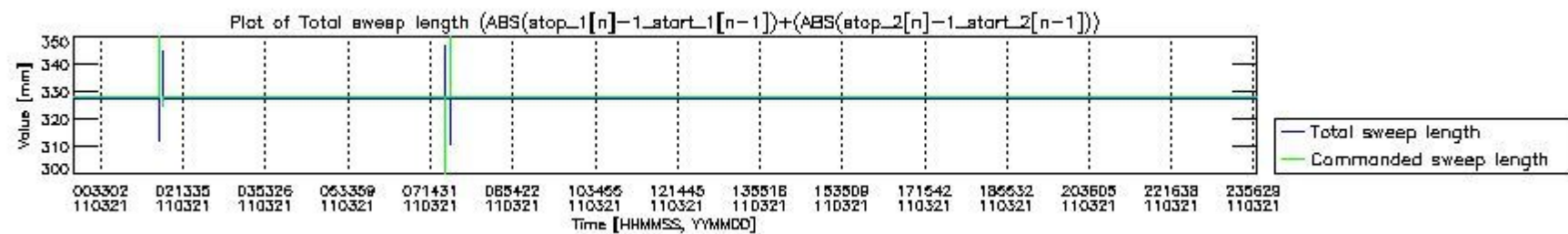
mipas_daily_report_level0_KSPT_L0_4504_N_20110321_3.PNG



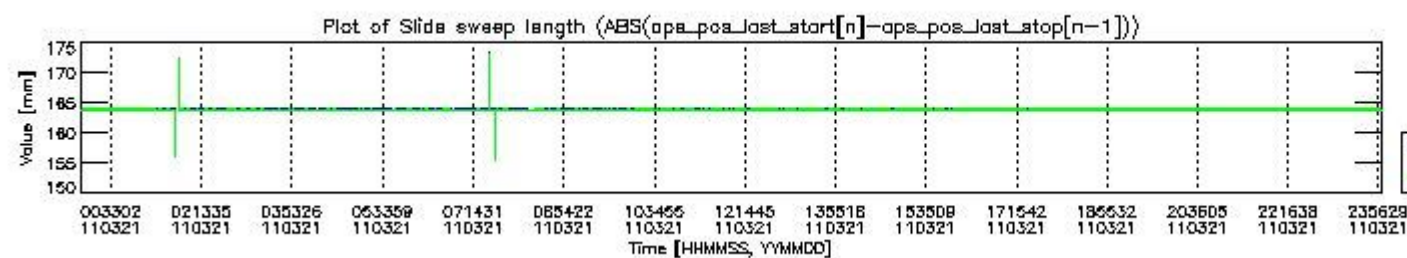
mipas_daily_report_level0_KSPT_L0_4504_N_20110321_4.PNG



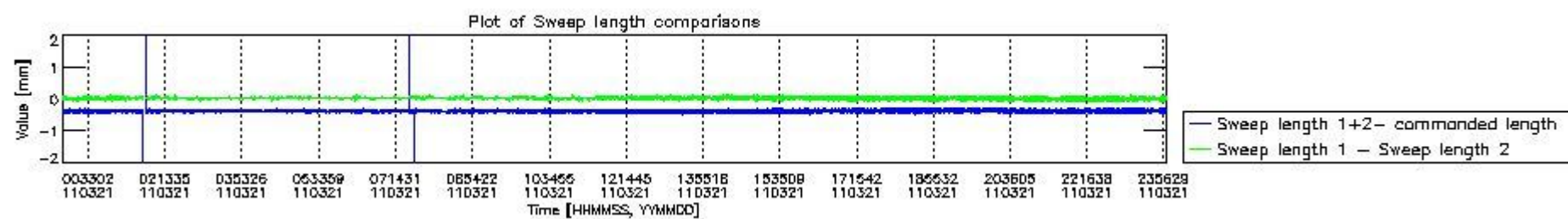
mipas_daily_report_level0_KSPT_L0_4504_N_20110321_5.PNG



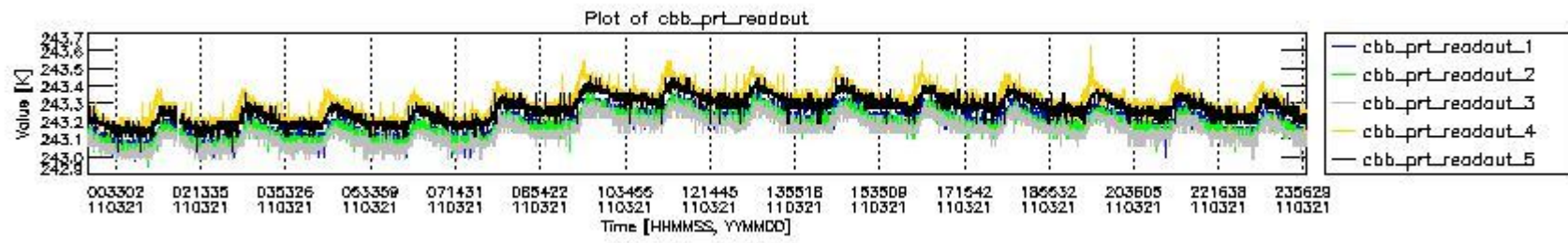
mipas_daily_report_level0_KSPT_L0_4504_N_20110321_6.PNG



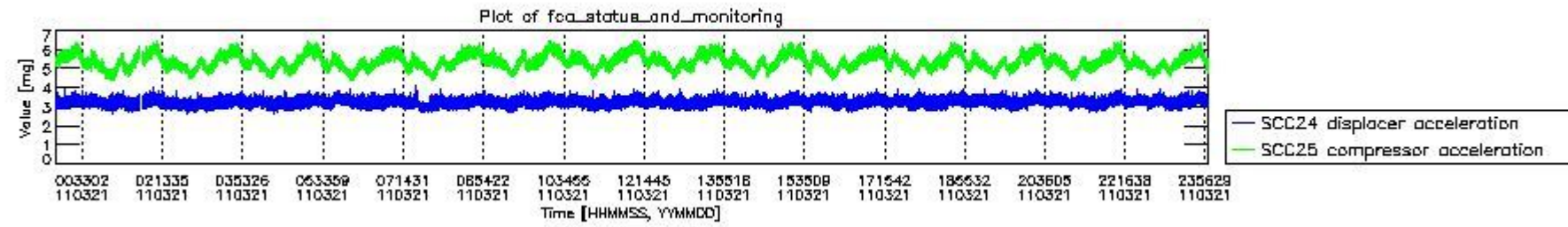
mipas_daily_report_level0_KSPT_L0_4504_N_20110321_7.PNG



mipas_daily_report_level0_KSPT_L0_4504_N_20110321_8.PNG



mipas_daily_report_level0_KSPT_L0_4504_N_20110321_9.PNG

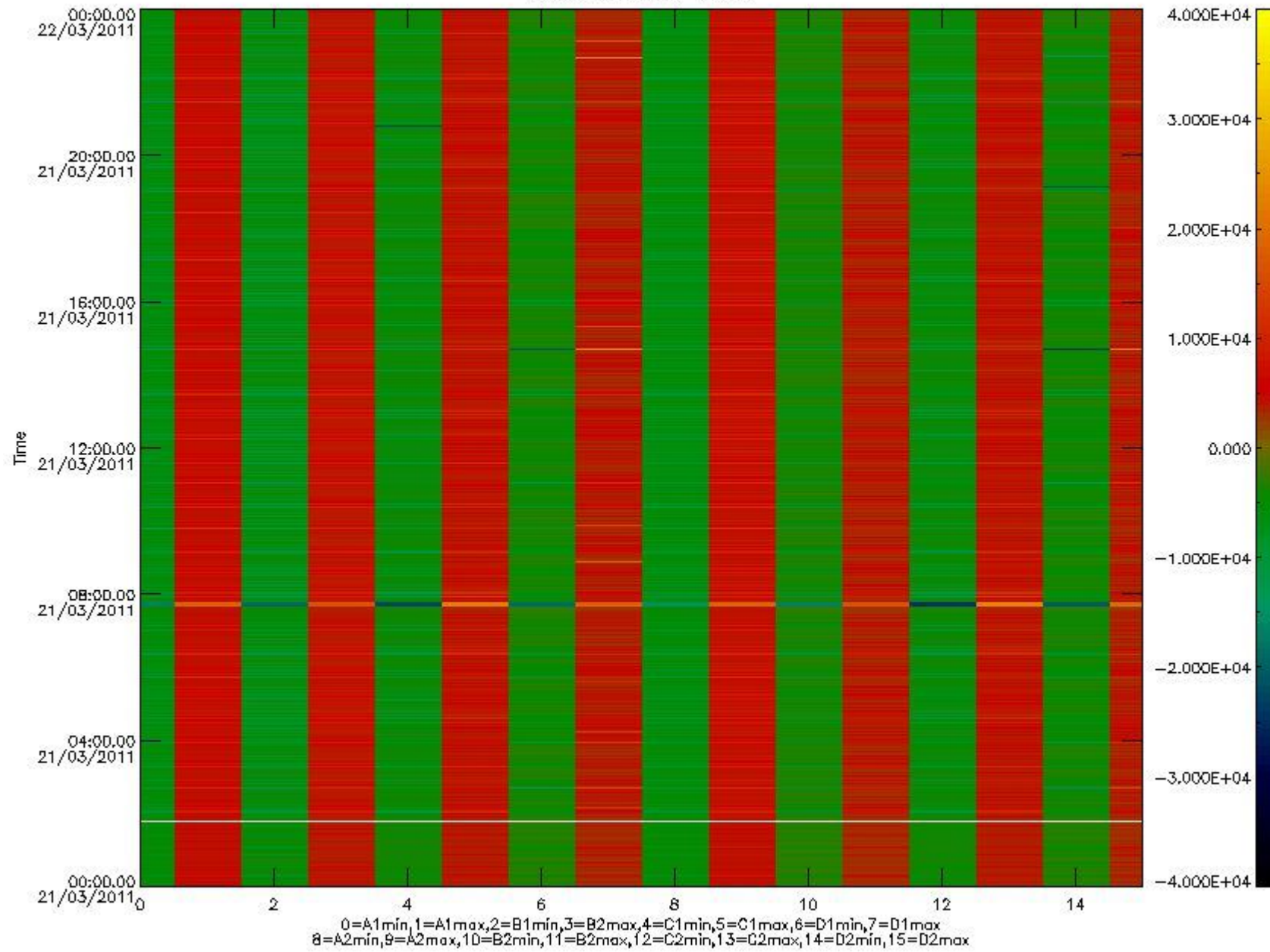


mipas_daily_report_level0_KSPT_L0_4504_N_20110321_10.PNG

The following table shows channel statistics for all channels for this day.

Channel	Min	Max	ADC
A1	-17723	18738	16bit
B1	-19601	16985	16bit
C1	-23378	23271	16bit
D1	-30669	32767	16bit
A2	-15384	18919	16bit
B2	-17754	17427	16bit
C2	-24329	32767	16bit
D2	-32768	32767	16bit

MIPNLOP_MIPSOUPAC_aux_fields_igm_cal, channel statistics plot
Colour indicates value.



mipas_daily_report_level0_KSPT_L0_4504_N_20110321_11.PNG

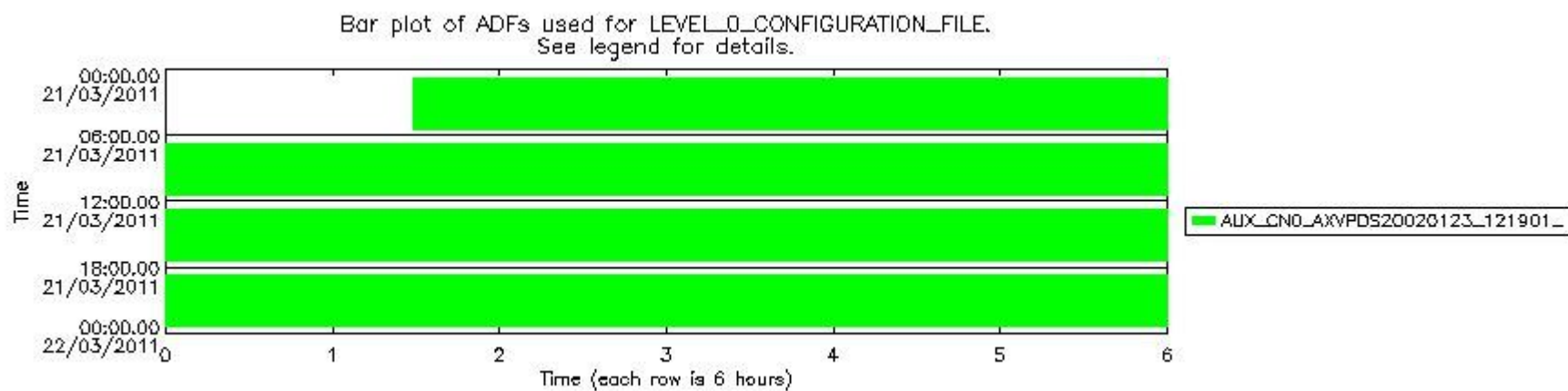
0.3 ADF monitoring

The use of ADFs is shown in two ways:

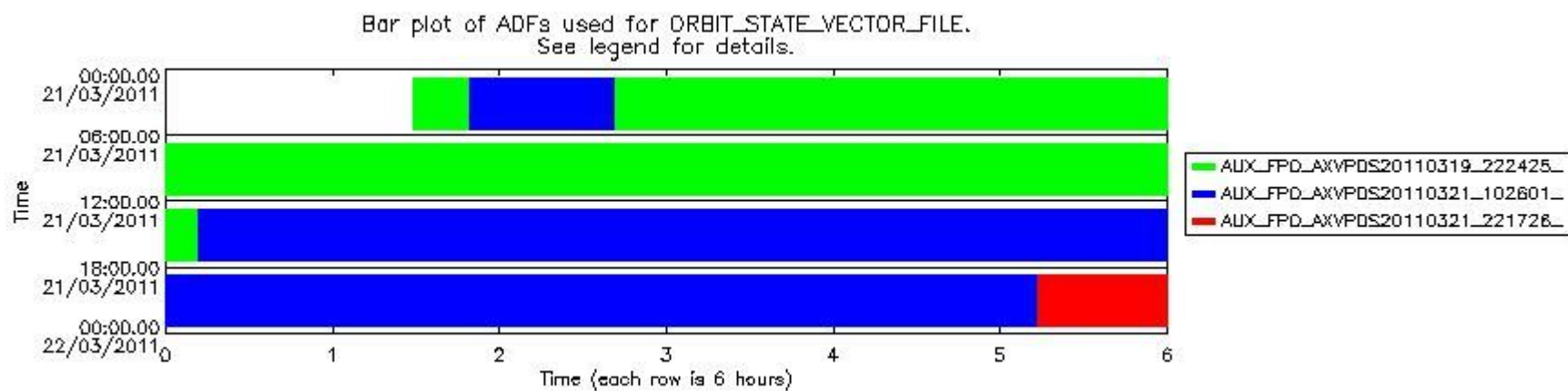
1. By means of two tables that can be used to find the ADF used for a specific product.
2. By means of plots that show changes in ADF using colours.

Number	ADF
0	AUX_CN0_AXVPDS20020123_121901_20020101_000000_20200101_000000
1	AUX_FPO_AXVPDS20110319_222425_20110319_193719_20110329_201055
2	AUX_FPO_AXVPDS20110321_102601_20110320_190035_20110330_211425
3	AUX_FPO_AXVPDS20110321_221726_20110321_182351_20110331_203741

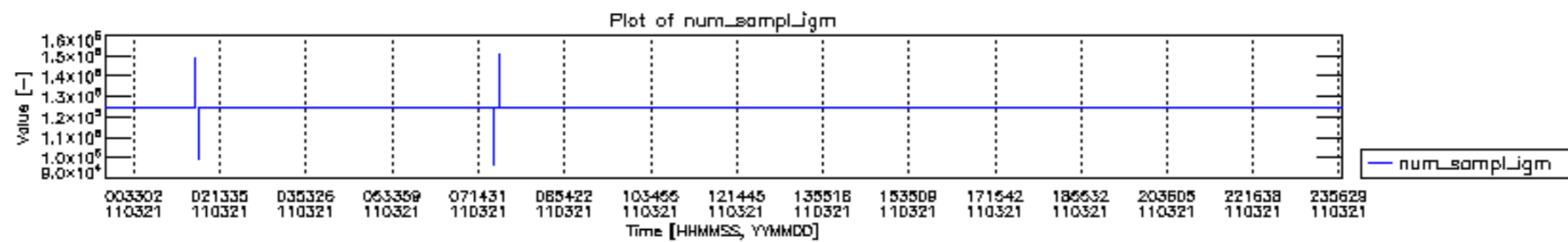
Number	Product name	#CNO	#FPO
0	MIP_NL__0PNPDE20110321_012850_000043983100_00347_47344_3150.N1	0	1
1	MIP_NL__0PNPDE20110321_014920_000031693100_00348_47345_3153.N1	0	2
2	MIP_NL__0PNPDE20110321_024135_000060853100_00348_47345_3151.N1	0	1
3	MIP_NL__0PNPDE20110321_042227_000060873100_00349_47346_3152.N1	0	1
4	MIP_NL__0PNPDK20110321_060321_000040993100_00350_47347_4620.N1	0	1
5	MIP_NL__0PNPDK20110321_071106_000061043100_00351_47348_4621.N1	0	1
6	MIP_NL__0PNPDK20110321_085217_000059293100_00352_47349_4622.N1	0	1
7	MIP_NL__0PNPDK20110321_103022_000060623100_00353_47350_4623.N1	0	1
8	MIP_NL__0PNPDK20110321_121050_000058783100_00354_47351_4624.N1	0	2
9	MIP_NL__0PNPDK20110321_134750_000059063100_00355_47352_4625.N1	0	2
10	MIP_NL__0PNPDK20110321_152438_000059683100_00356_47353_4626.N1	0	2
11	MIP_NL__0PNPDK20110321_170310_000059203100_00357_47354_4627.N1	0	2
12	MIP_NL__0PNPDK20110321_184041_000061003100_00358_47355_4628.N1	0	2
13	MIP_NL__0PNPDE20110321_202043_000042993100_00359_47356_3154.N1	0	2
14	MIP_NL__0PNPDE20110321_213119_000061883100_00359_47356_3155.N1	0	2
15	MIP_NL__0PNPDE20110321_231328_000060873100_00360_47357_3156.N1	0	3

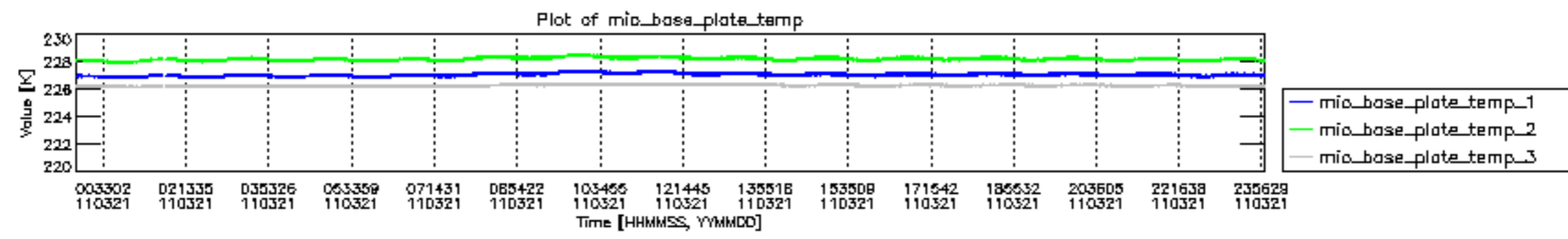


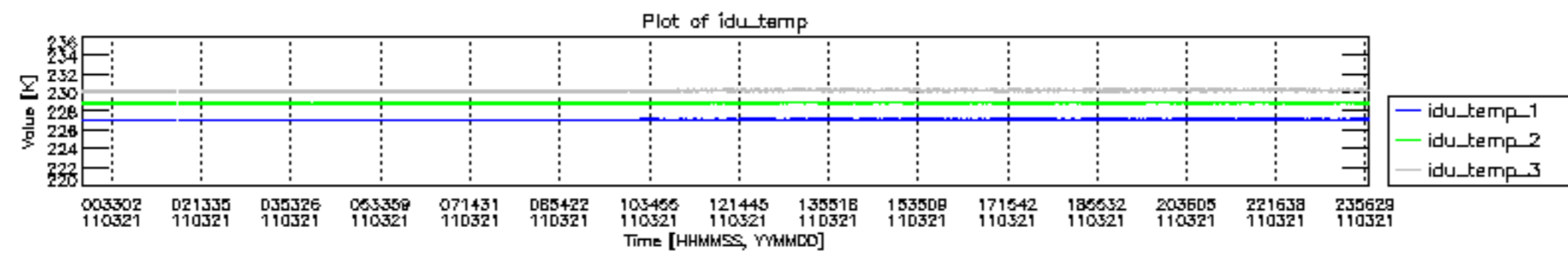
mipas_daily_report_level0_KSPT_L0_4504_N_20110321_12.PNG

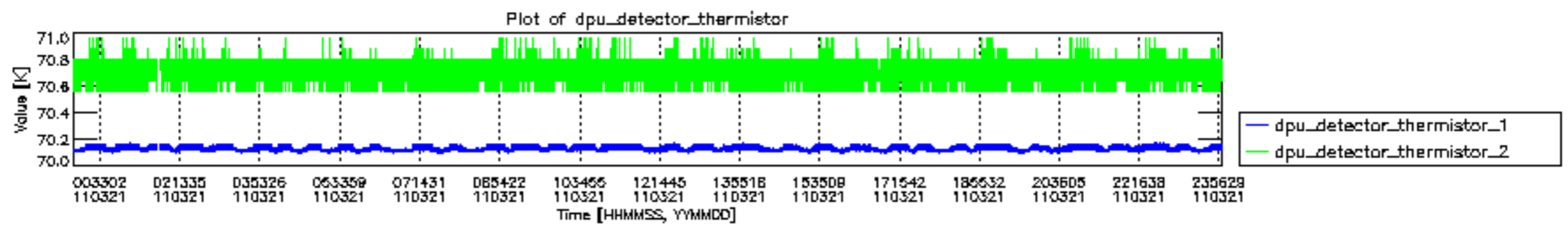


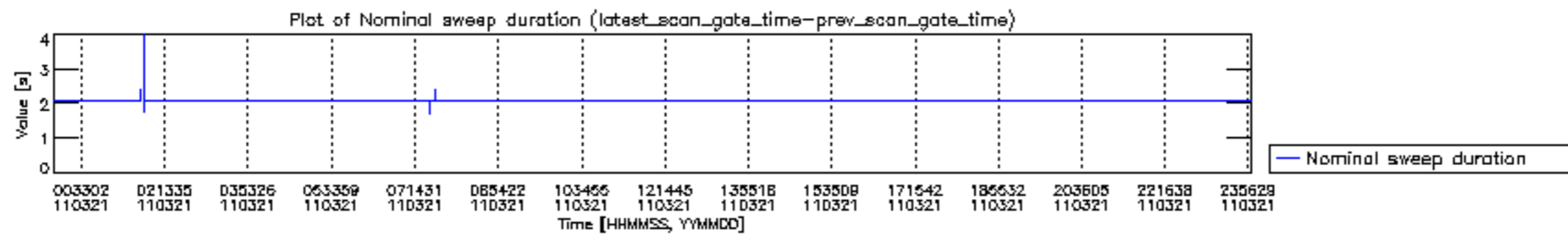
mipas_daily_report_level0_KSPT_L0_4504_N_20110321_13.PNG

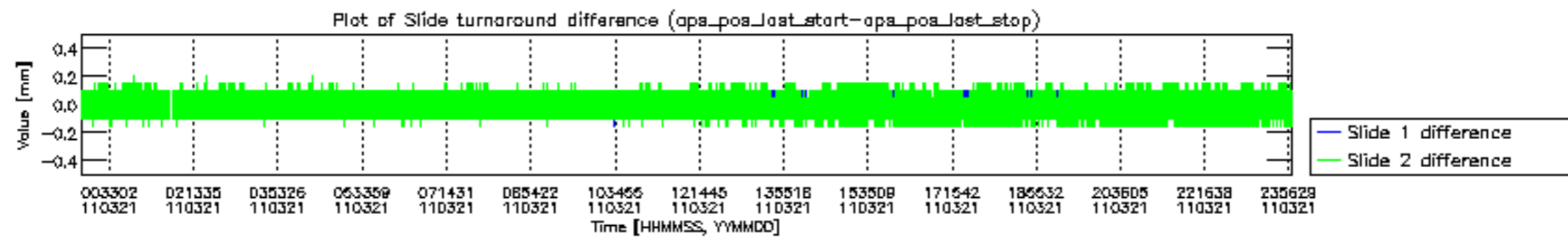


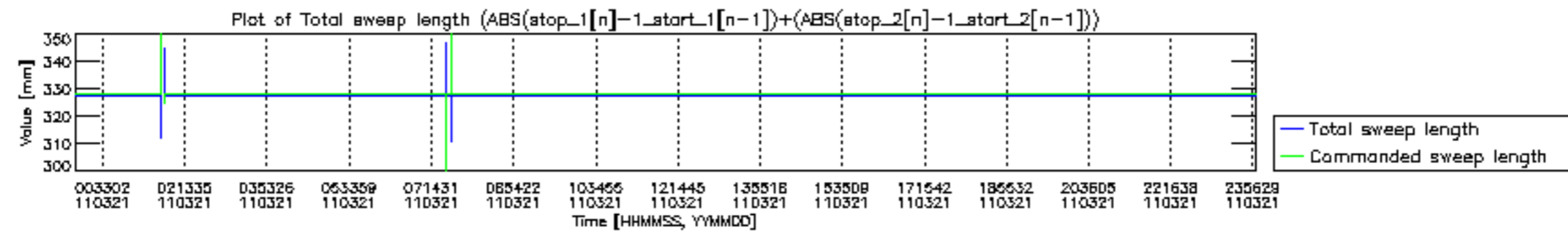


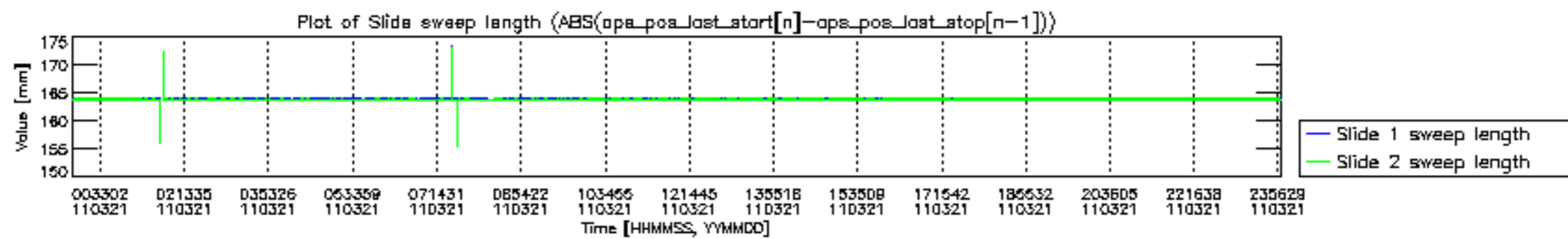


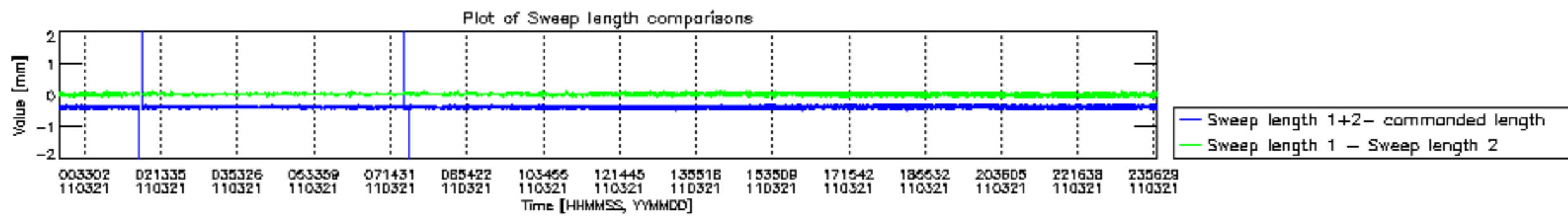


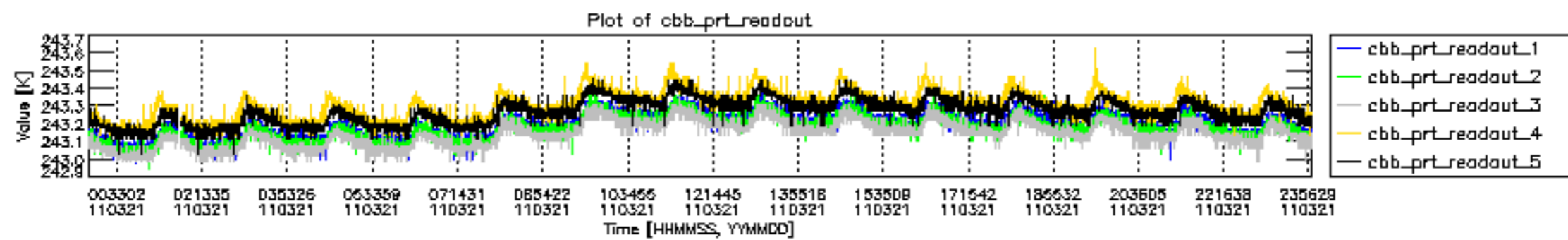


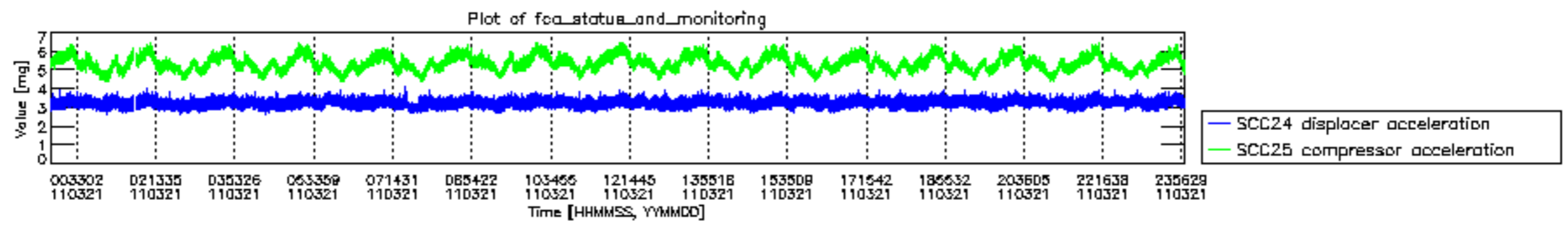












MIPNLOP_MIPSOUPAC_aux_fields_igm_cal, channel statistics plot
 Colour indicates value.

