

0. MIPAS Daily Report for level 0 products

[0.1 General Info](#)

[0.2 Instrument Operational Performance Parameters](#)

[0.3 ADF monitoring](#)

0.1 General Info

This report contains a daily analysis on parameters extracted from MIPAS level 0 data (The MIP_NL__0P product).

0.1.1 Report summary

The table below shows general characteristics of the data that are included into this report.

Item	Value
Report version	v1.6 08-11-2010
Time of report generation	22MAR2011 05:24:39
Data source version	KSPT_L0/4504-N
Processing scope for products	17MAR2011 00:00:00 to 18MAR2011 00:00:00
Start time of first product within scope	17MAR2011 00:37:27
Stop time of last product within scope	18MAR2011 01:38:03
Total number of level 0 products	17
Number of level 0 products with errors	0

0.1.2 Product Quality Indicators per product

The following table shows a summary for each product used in this report.

#	Product name	Start time	Stop time	Prod err	ISP err sign	ISP miss sign	ISP disc sign	rs sign
0	MIP_NL__0PNPDE20110317_003727_000057263100_00289_47286_3124.N1	17MAR2011 00:37:27	17MAR2011 02:12:53	0	0	0	0	0
1	MIP_NL__0PNPDE20110317_021146_000045793100_00290_47287_3125.N1	17MAR2011 02:11:46	17MAR2011 03:28:05	0	0	0	0	0
2	MIP_NL__0PNPDE20110317_032732_000061883100_00291_47288_3126.N1	17MAR2011 03:27:32	17MAR2011 05:10:40	0	0	0	0	0
3	MIP_NL__0PNPDE20110317_051006_000023123100_00292_47289_3127.N1	17MAR2011 05:10:06	17MAR2011 05:48:38	0	0	0	0	0
4	MIP_NL__0PNPDK20110317_090912_000017403100_00295_47292_4584.N1	17MAR2011 09:09:12	17MAR2011 09:38:12	0	0	0	0	0
5	MIP_NL__0PNPDK20110317_093728_000060633100_00295_47292_4585.N1	17MAR2011 09:37:28	17MAR2011 11:18:31	0	0	0	0	0
6	MIP_NL__0PNPDK20110317_111751_000059543100_00296_47293_4586.N1	17MAR2011 11:17:51	17MAR2011 12:57:05	0	0	0	0	0
7	MIP_NL__0PNPDK20110317_125621_000058993100_00297_47294_4587.N1	17MAR2011 12:56:21	17MAR2011 14:34:41	0	0	0	0	0
8	MIP_NL__0PNPDK20110317_143313_000059353100_00298_47295_4588.N1	17MAR2011 14:33:13	17MAR2011 16:12:08	0	0	0	0	0
9	MIP_NL__0PNPDK20110317_161030_000059663100_00299_47296_4589.N1	17MAR2011 16:10:30	17MAR2011 17:49:56	0	0	0	0	0
10	MIP_NL__0PNPDK20110317_174857_000058333100_00300_47297_4590.N1	17MAR2011 17:48:57	17MAR2011 19:26:10	0	0	0	0	0
11	MIP_NL__0PNPDK20110317_192534_000062343100_00301_47298_4591.N1	17MAR2011 19:25:34	17MAR2011 21:09:28	0	0	0	0	0
12	MIP_NL__0PNPDK20110317_210836_000042473100_00302_47299_4098.N1	17MAR2011 21:08:36	17MAR2011 22:19:23	0	0	0	0	0
13	MIP_NL__0PNPDE20110317_221550_000003133100_00302_47299_3128.N1	17MAR2011 22:15:50	17MAR2011 22:21:03	0	0	0	0	0
14	MIP_NL__0PNPDK20110317_221822_000060903100_00302_47299_4099.N1	17MAR2011 22:18:22	17MAR2011 23:59:52	0	0	0	0	0
15	MIP_NL__0PNPDE20110317_235604_000004163100_00303_47300_3129.N1	17MAR2011 23:56:04	18MAR2011 00:03:00	0	0	0	0	0
16	MIP_NL__0PNPDK20110317_235849_000059543100_00303_47300_4100.N1	17MAR2011 23:58:49	18MAR2011 01:38:03	0	0	0	0	0

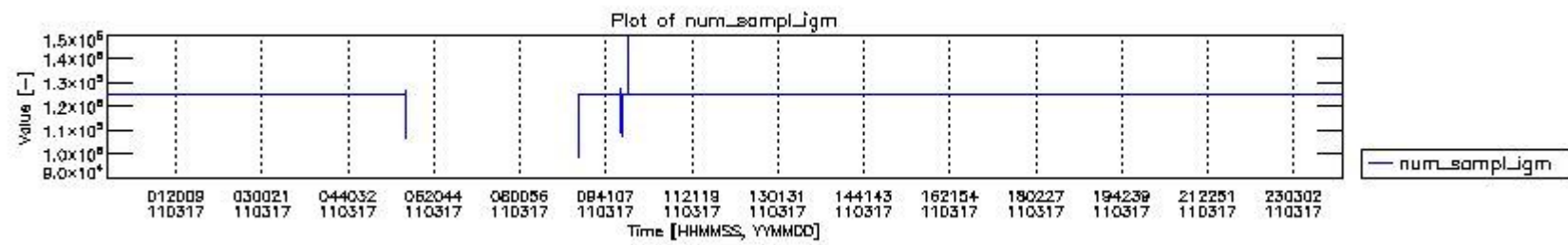
0.2 Instrument Operational Performance Parameters

The following plots give an overview of various instrument parameters for this day. The instrument parameters are part of the auxiliary data field within the source packets of the MIP_NL__0P product. The auxiliary data is normally included twice per interferogram. Note that only the first packet is currently included in monitoring.

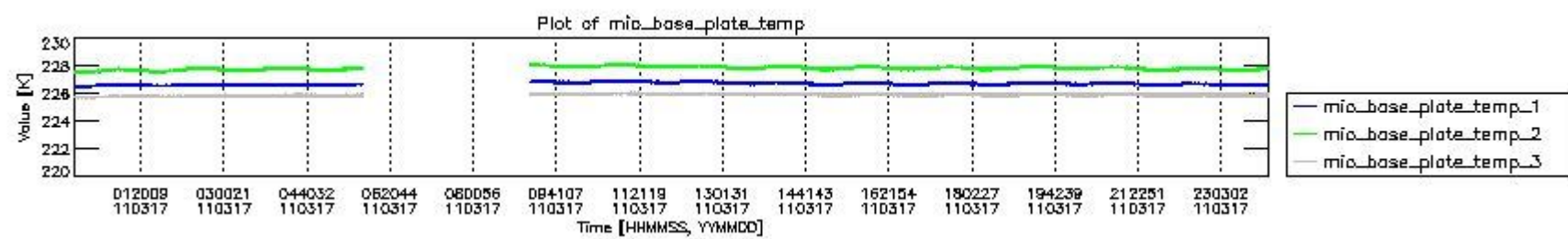
The following table shows the counts of various interferogram number of samples

Number of igm samples	Count [#]	Count [%]
98996	1	0.0027862138

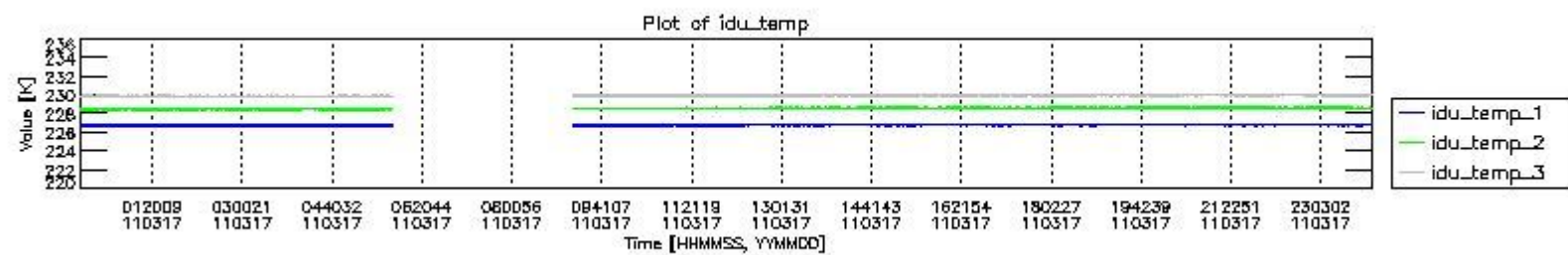
106418	1	0.0027862138
107384	1	0.0027862138
108168	1	0.0027862138
110100	1	0.0027862138
123696	1	0.0027862138
124248	1	0.0027862138
124800	33331	92.867293
124803	2548	7.0992728
126550	1	0.0027862138
126936	1	0.0027862138
127516	1	0.0027862138
147068	1	0.0027862138
149204	1	0.0027862138



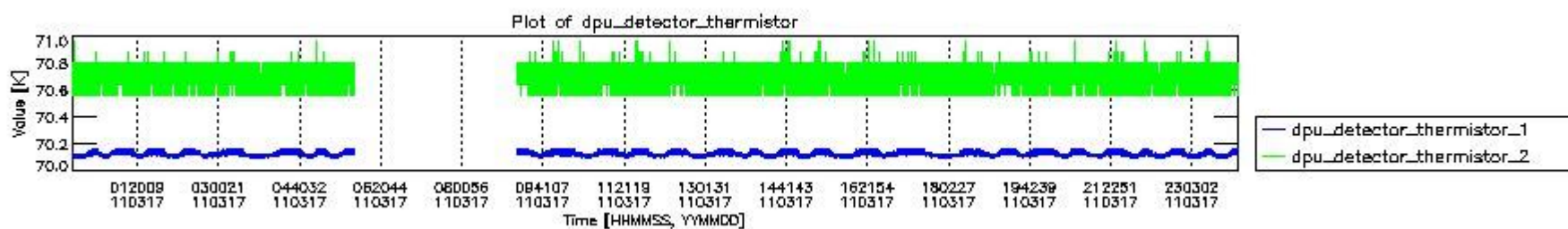
mipas_daily_report_level0_KSPT_L0_4504_N_20110317_0.PNG



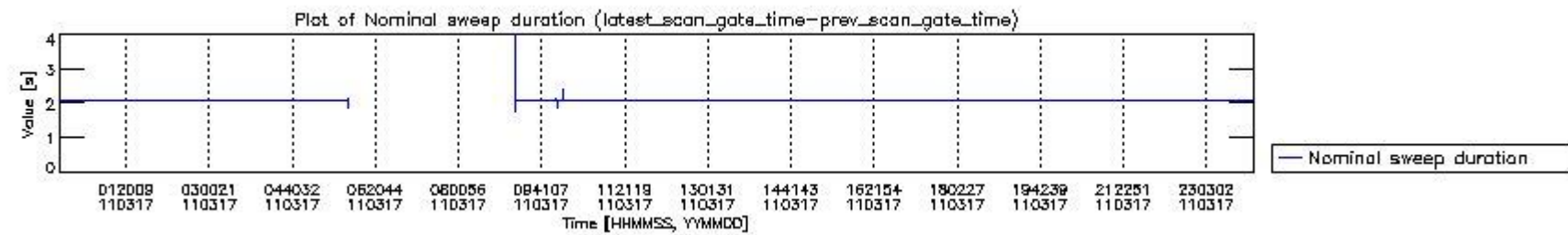
mipas_daily_report_level0_KSPT_L0_4504_N_20110317_1.PNG



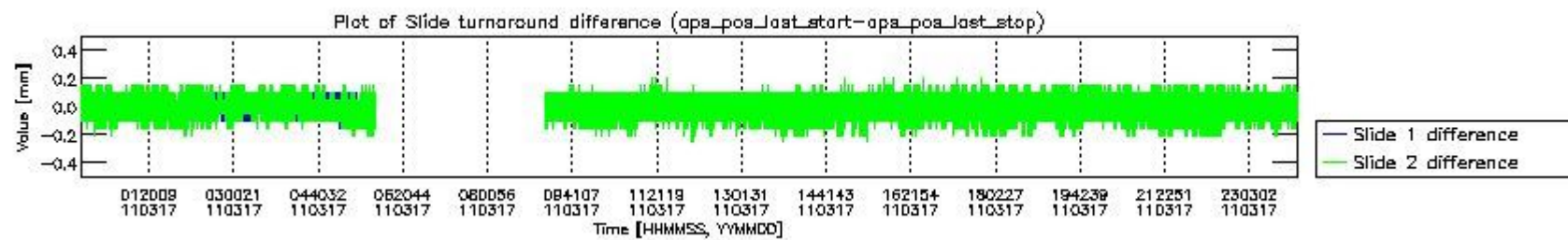
mipas_daily_report_level0_KSPT_L0_4504_N_20110317_2.PNG



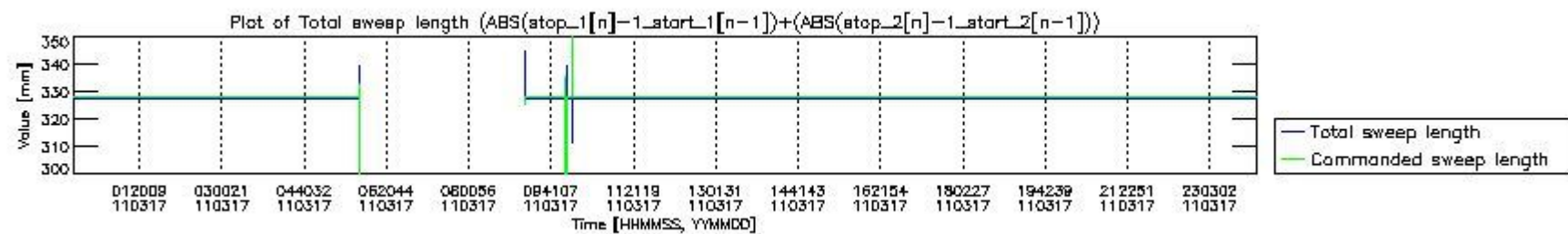
mipas_daily_report_level0_KSPT_L0_4504_N_20110317_3.PNG



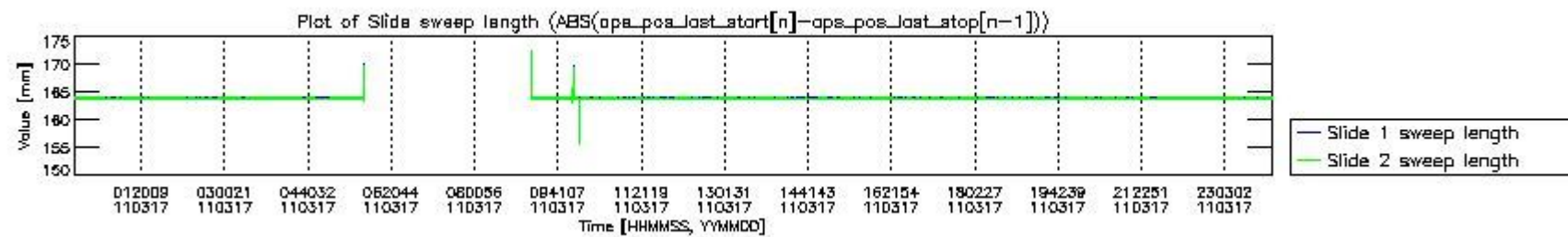
mipas_daily_report_level0_KSPT_L0_4504_N_20110317_4.PNG



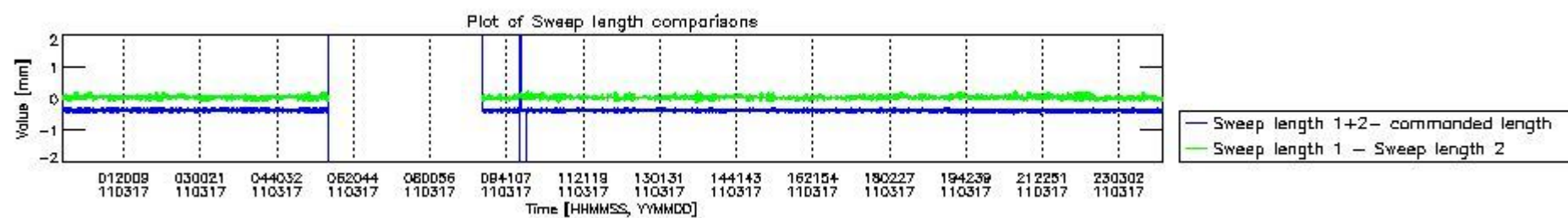
mipas_daily_report_level0_KSPT_L0_4504_N_20110317_5.PNG



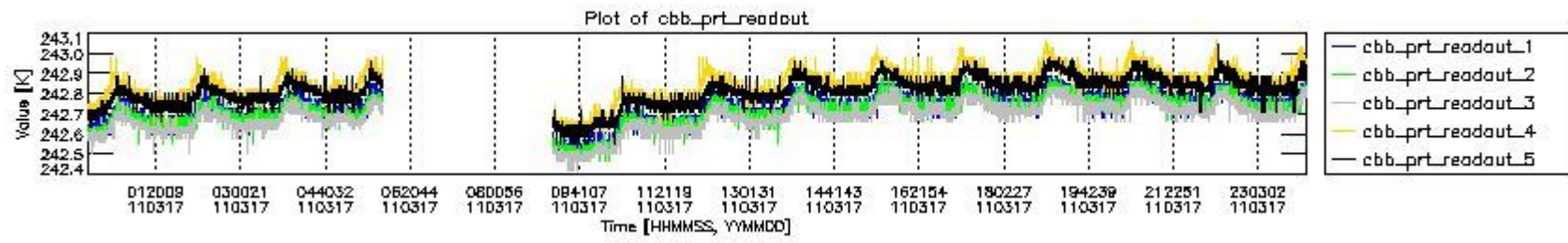
mipas_daily_report_level0_KSPT_L0_4504_N_20110317_6.PNG



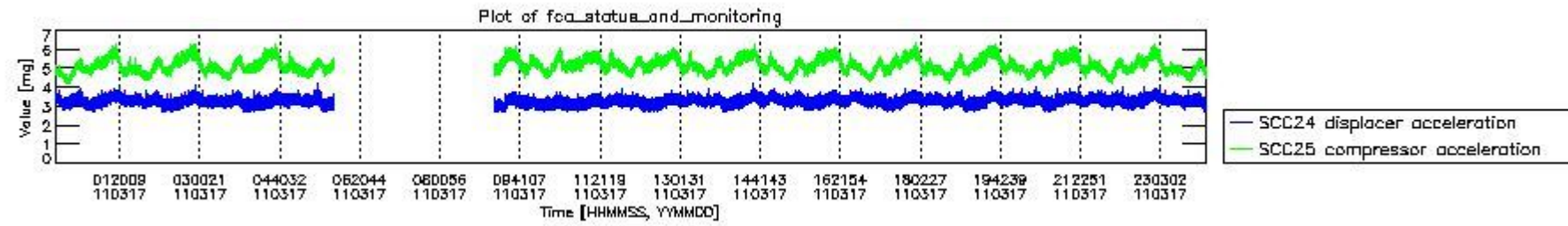
mipas_daily_report_level0_KSPT_L0_4504_N_20110317_7.PNG



mipas_daily_report_level0_KSPT_L0_4504_N_20110317_8.PNG



mipas_daily_report_level0_KSPT_L0_4504_N_20110317_9.PNG

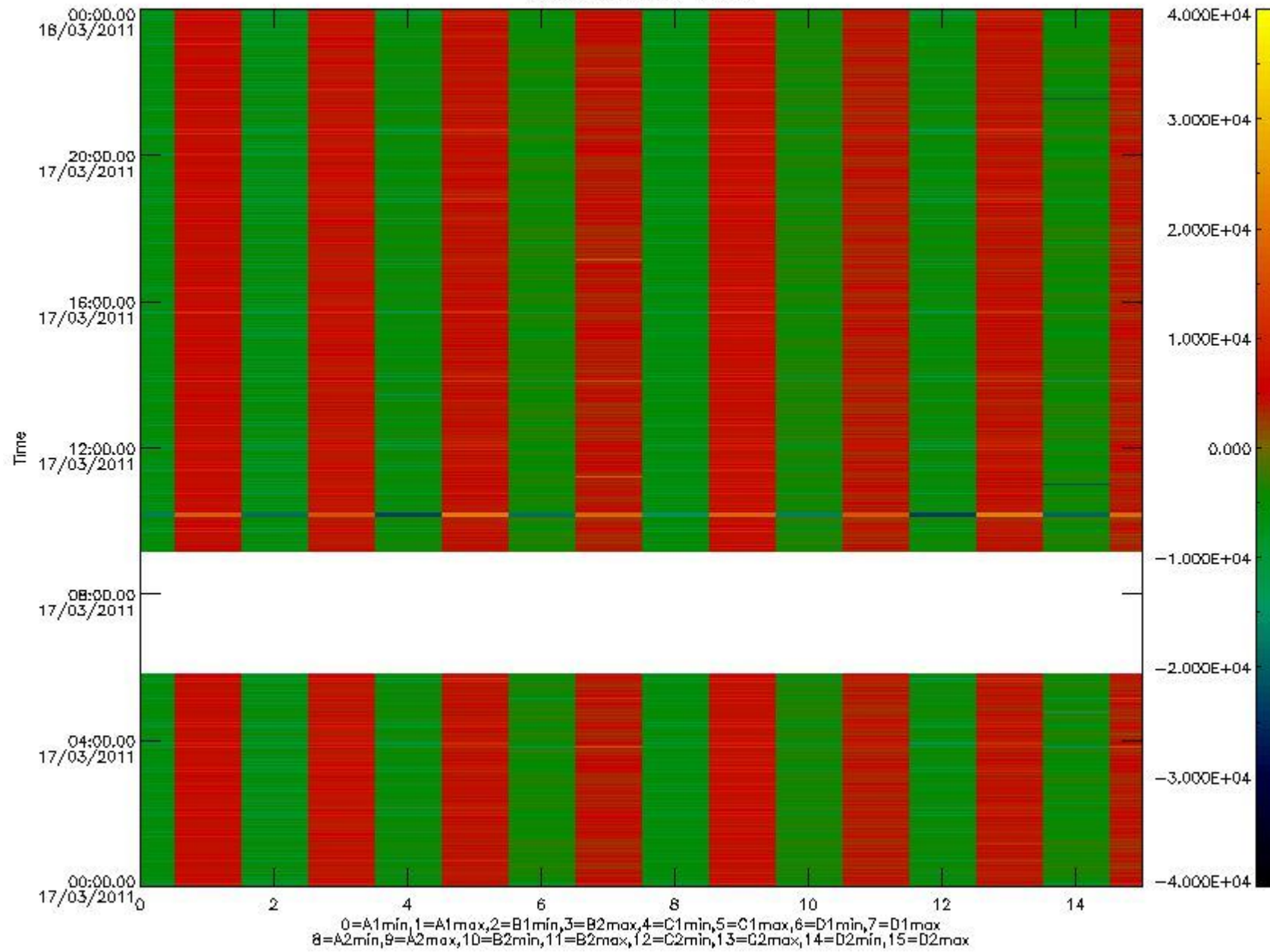


mipas_daily_report_level0_KSPT_L0_4504_N_20110317_10.PNG

The following table shows channel statistics for all channels for this day.

Channel	Min	Max	ADC
A1	-32768	32767	16bit
B1	-32768	32767	16bit
C1	-23826	22698	16bit
D1	-32768	32767	16bit
A2	-32768	28250	16bit
B2	-32768	32767	16bit
C2	-23889	25022	16bit
D2	-32768	32767	16bit

MIPNLOP_MIPSOUPAC_aux_fields_1gm_cal, channel statistics plot
Colour indicates value.



mipas_daily_report_level0_KSPT_L0_4504_N_20110317_11.PNG

0.3 ADF monitoring

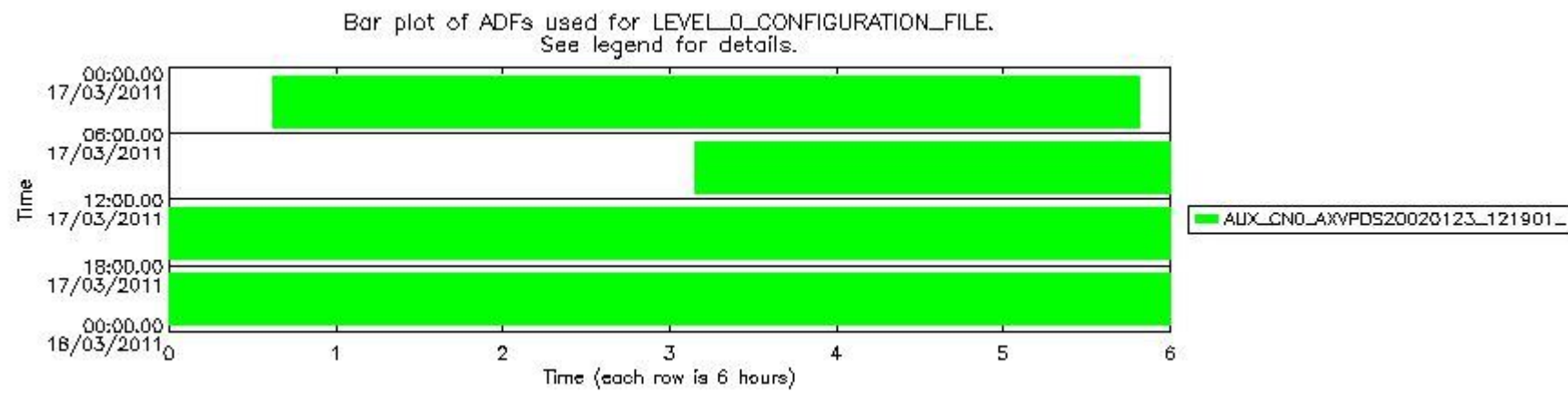
The use of ADFs is shown in two ways:

1. By means of two tables that can be used to find the ADF used for a specific product.
2. By means of plots that show changes in ADF using colours.

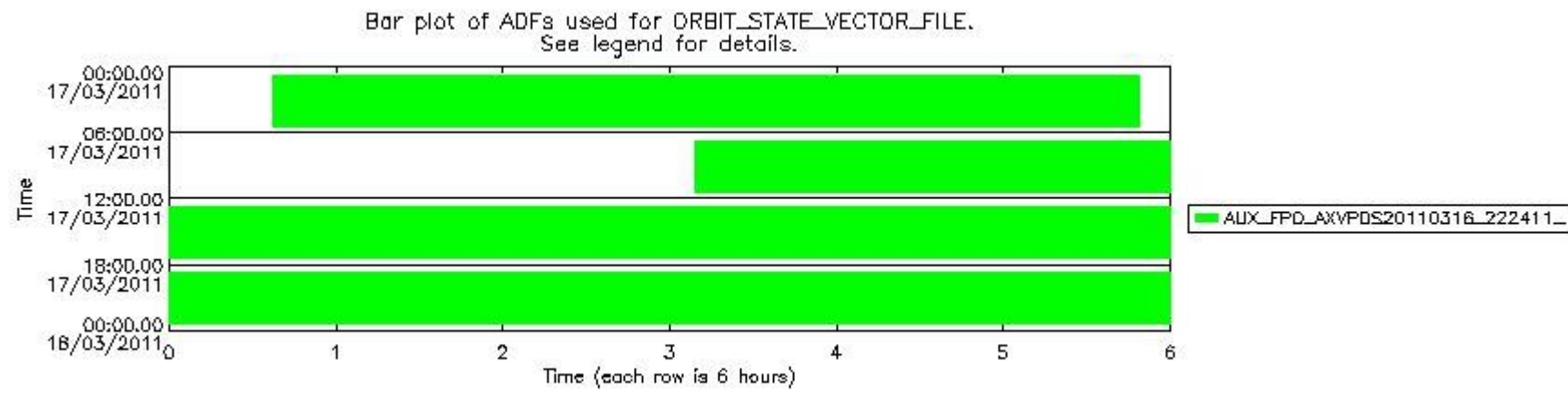
Number	ADF
0	AUX_CN0_AXVPDS20020123_121901_20020101_000000_20200101_000000
1	AUX_FPO_AXVPDS20110316_222411_20110316_094553_20110326_115943

Number	Product name	#CN0	#FPO
0	MIP_NL_0PNPDE20110317_003727_000057263100_00289_47286_3124.N1	0	1

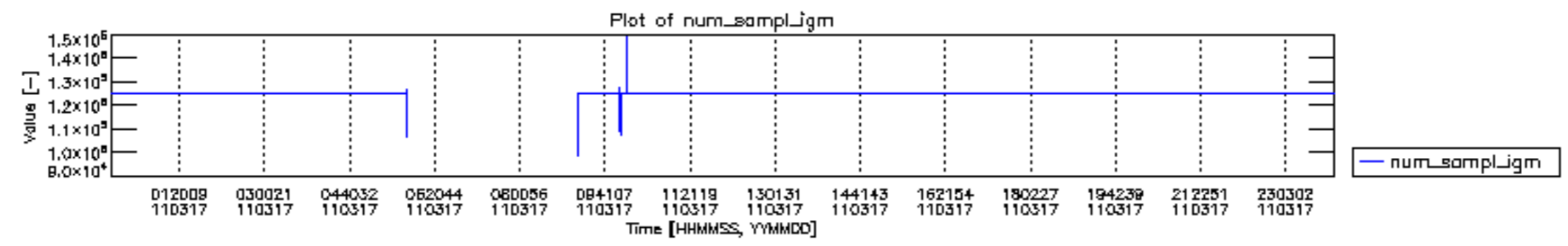
1	MIP_NL__0PNPDE20110317_021146_000045793100_00290_47287_3125.N1	0	1
2	MIP_NL__0PNPDE20110317_032732_000061883100_00291_47288_3126.N1	0	1
3	MIP_NL__0PNPDE20110317_051006_000023123100_00292_47289_3127.N1	0	1
4	MIP_NL__0PNPDK20110317_090912_000017403100_00295_47292_4584.N1	0	1
5	MIP_NL__0PNPDK20110317_093728_000060633100_00295_47292_4585.N1	0	1
6	MIP_NL__0PNPDK20110317_111751_000059543100_00296_47293_4586.N1	0	1
7	MIP_NL__0PNPDK20110317_125621_000058993100_00297_47294_4587.N1	0	1
8	MIP_NL__0PNPDK20110317_143313_000059353100_00298_47295_4588.N1	0	1
9	MIP_NL__0PNPDK20110317_161030_000059663100_00299_47296_4589.N1	0	1
10	MIP_NL__0PNPDK20110317_174857_000058333100_00300_47297_4590.N1	0	1
11	MIP_NL__0PNPDK20110317_192534_000062343100_00301_47298_4591.N1	0	1
12	MIP_NL__0PNPDK20110317_210836_000042473100_00302_47299_4098.N1	0	1
13	MIP_NL__0PNPDE20110317_221550_000003133100_00302_47299_3128.N1	0	1
14	MIP_NL__0PNPDK20110317_221822_000060903100_00302_47299_4099.N1	0	1
15	MIP_NL__0PNPDE20110317_235604_000004163100_00303_47300_3129.N1	0	1
16	MIP_NL__0PNPDK20110317_235849_000059543100_00303_47300_4100.N1	0	1

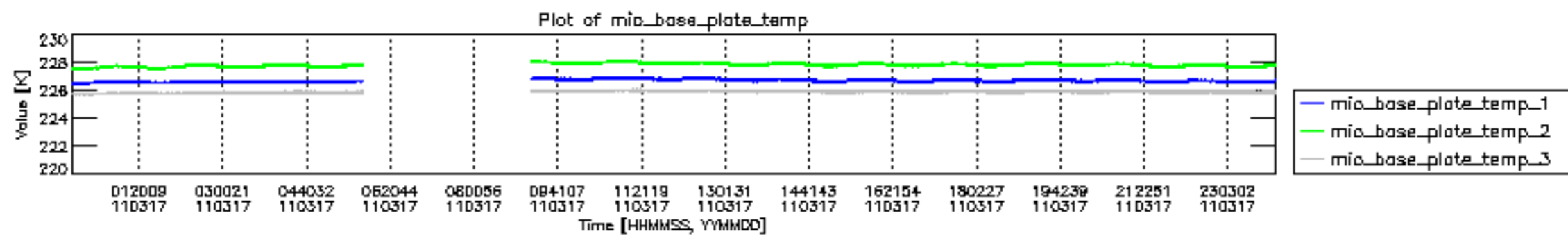


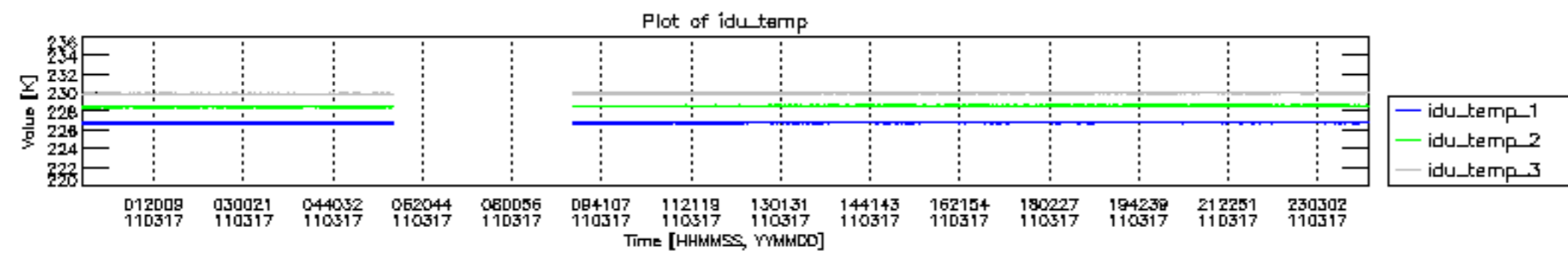
mipas_daily_report_level0_KSPT_L0_4504_N_20110317_12.PNG

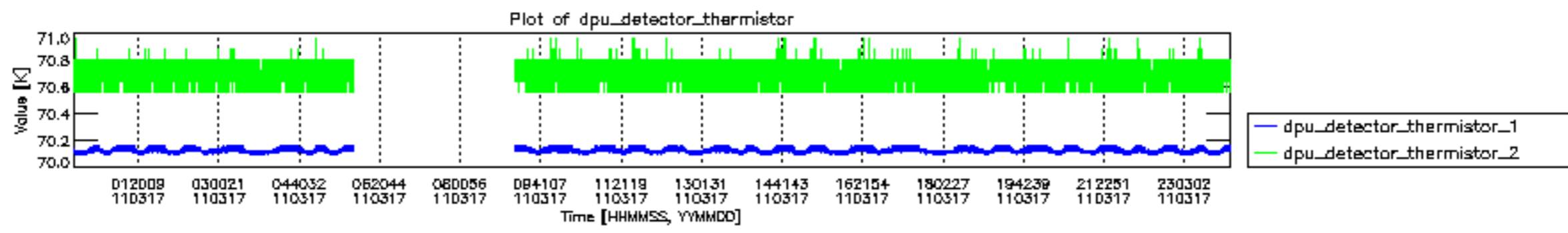


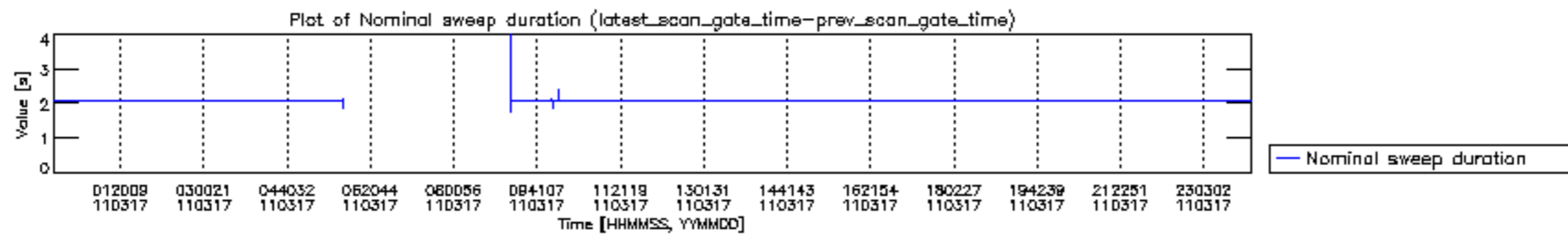
mipas_daily_report_level0_KSPT_L0_4504_N_20110317_13.PNG

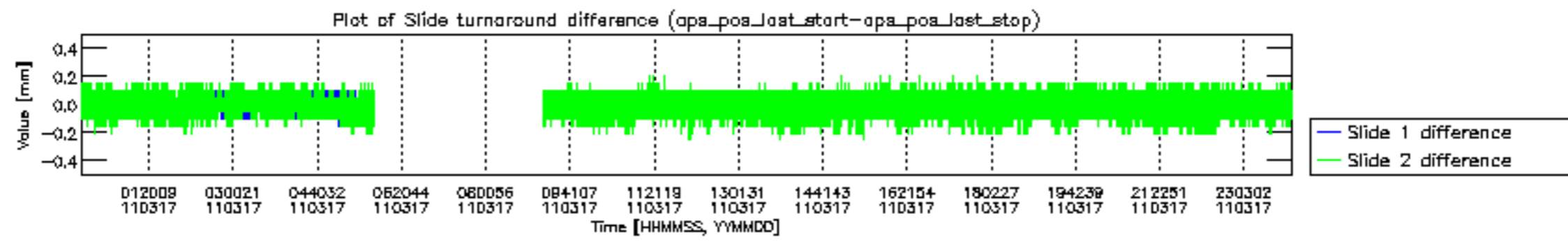


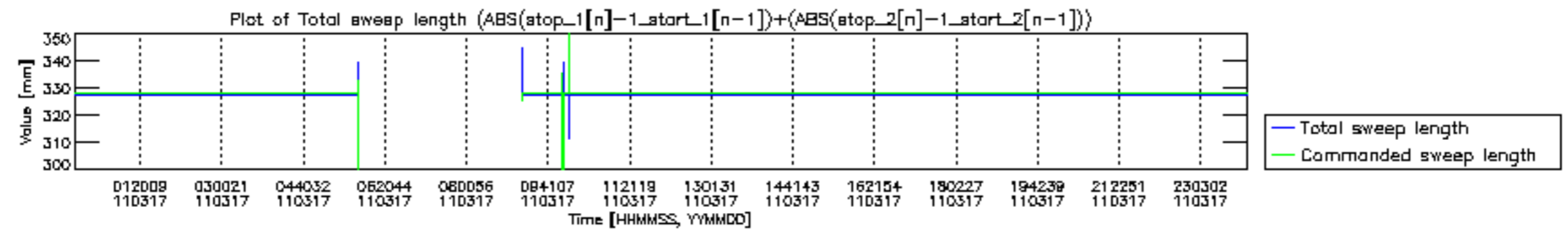


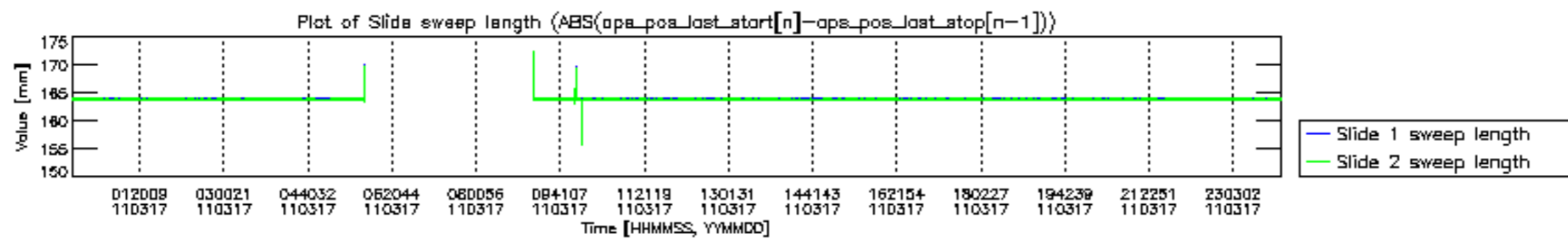


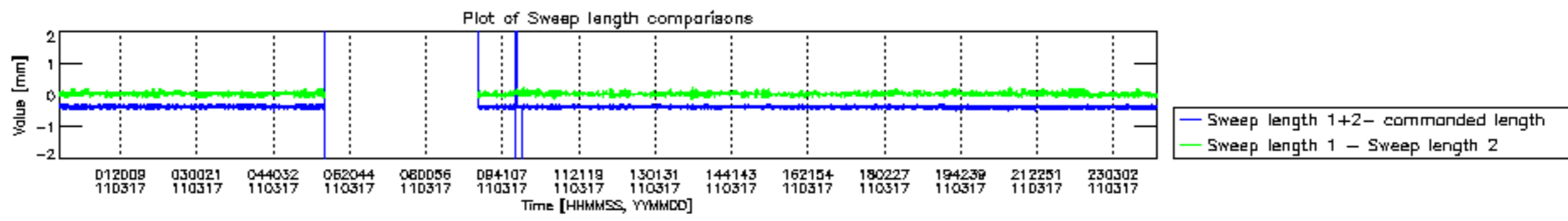


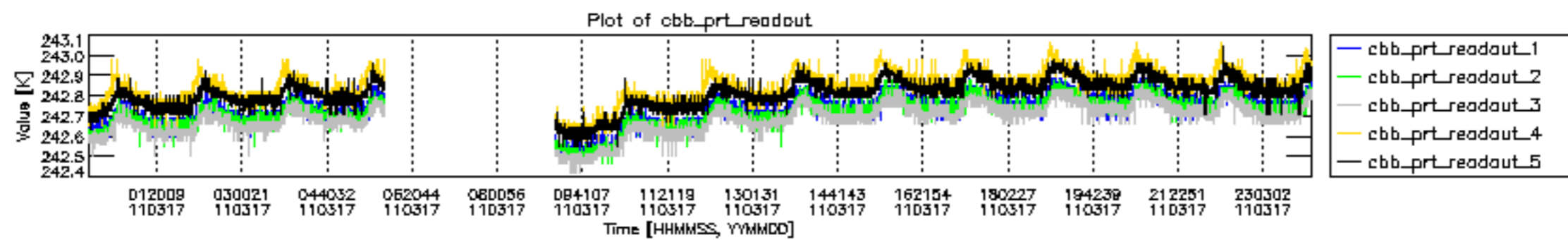


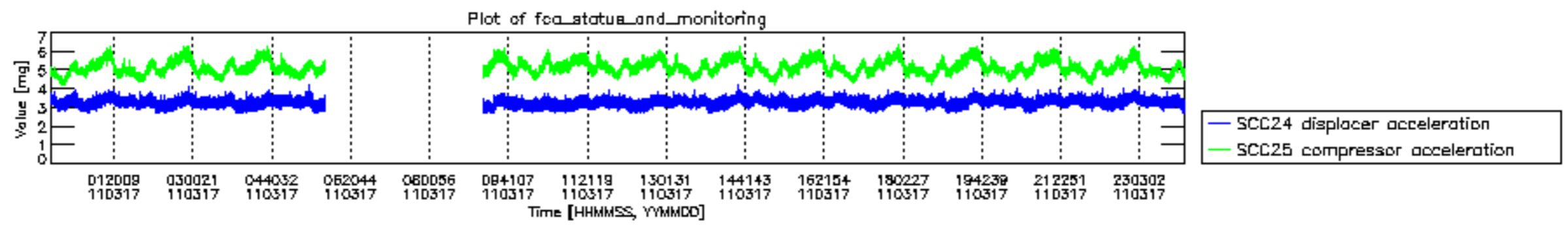












MIPNLOP_MIPSOUPAC_aux_fields_igm_cal, channel statistics plot
 Colour indicates value.

