

0. MIPAS Daily Report for level 0 products

[0.1 General Info](#)

[0.2 Instrument Operational Performance Parameters](#)

[0.3 ADF monitoring](#)

0.1 General Info

This report contains a daily analysis on parameters extracted from MIPAS level 0 data (The MIP_NL__0P product).

0.1.1 Report summary

The table below shows general characteristics of the data that are included into this report.

Item	Value
Report version	v1.6 08-11-2010
Time of report generation	14MAR2011 05:24:12
Data source version	KSPT_L0/4504-N
Processing scope for products	09MAR2011 00:00:00 to 10MAR2011 00:00:00
Start time of first product within scope	09MAR2011 00:29:41
Stop time of last product within scope	10MAR2011 01:31:42
Total number of level 0 products	16
Number of level 0 products with errors	0

0.1.2 Product Quality Indicators per product

The following table shows a summary for each product used in this report.

#	Product name	Start time	Stop time	Prod err	ISP err sign	ISP miss sign	ISP disc sign	rs sign
0	MIP_NL__0PNPDE20110309_002941_000058203100_00174_47171_3068.N1	09MAR2011 00:29:41	09MAR2011 02:06:41	0	0	0	0	0
1	MIP_NL__0PNPDE20110309_020534_000045623100_00175_47172_3069.N1	09MAR2011 02:05:34	09MAR2011 03:21:37	0	0	0	0	0
2	MIP_NL__0PNPDE20110309_032103_000061333100_00176_47173_3070.N1	09MAR2011 03:21:03	09MAR2011 05:03:17	0	0	0	0	0
3	MIP_NL__0PNPDE20110309_050243_000060633100_00177_47174_3071.N1	09MAR2011 05:02:43	09MAR2011 06:43:47	0	0	0	0	0
4	MIP_NL__0PNPDK20110309_064313_000040903100_00178_47175_4510.N1	09MAR2011 06:43:13	09MAR2011 07:51:24	0	0	0	0	0
5	MIP_NL__0PNPDK20110309_075050_000060523100_00179_47176_4511.N1	09MAR2011 07:50:50	09MAR2011 09:31:42	0	0	0	0	0
6	MIP_NL__0PNPDK20110309_093058_000041403100_00180_47177_4512.N1	09MAR2011 09:30:58	09MAR2011 10:39:59	0	0	0	0	0
7	MIP_NL__0PNPDK20110309_112314_000051783100_00181_47178_4513.N1	09MAR2011 11:23:14	09MAR2011 12:49:33	0	0	0	0	0
8	MIP_NL__0PNPDK20110309_124912_000058903100_00182_47179_4514.N1	09MAR2011 12:49:12	09MAR2011 14:27:22	0	0	0	0	0
9	MIP_NL__0PNPDK20110309_142628_000059313100_00183_47180_4515.N1	09MAR2011 14:26:28	09MAR2011 16:05:18	0	0	0	0	0
10	MIP_NL__0PNPDK20110309_160420_000058663100_00184_47181_4516.N1	09MAR2011 16:04:20	09MAR2011 17:42:06	0	0	0	0	0
11	MIP_NL__0PNPDK20110309_174114_000059063100_00185_47182_4517.N1	09MAR2011 17:41:14	09MAR2011 19:19:40	0	0	0	0	0
12	MIP_NL__0PNPDK20110309_191831_000062463100_00186_47183_4518.N1	09MAR2011 19:18:31	09MAR2011 21:02:37	0	0	0	0	0
13	MIP_NL__0PNPDE20110309_210120_000042143100_00187_47184_3073.N1	09MAR2011 21:01:20	09MAR2011 22:11:33	0	0	0	0	0
14	MIP_NL__0PNPDE20110309_221031_000062423100_00187_47184_3074.N1	09MAR2011 22:10:31	09MAR2011 23:54:33	0	0	0	0	0
15	MIP_NL__0PNPDE20110309_235334_000058883100_00188_47185_3075.N1	09MAR2011 23:53:34	10MAR2011 01:31:42	0	0	0	0	0

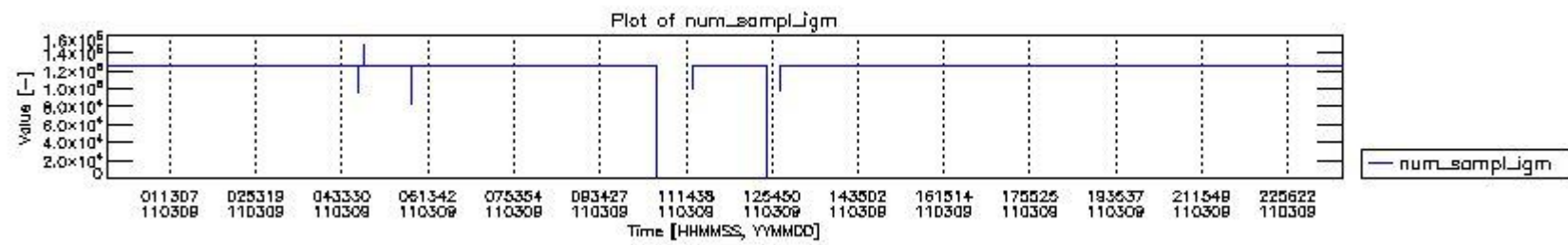
0.2 Instrument Operational Performance Parameters

The following plots give an overview of various instrument parameters for this day. The instrument parameters are part of the auxiliary data field within the source packets of the MIP_NL__0P product. The auxiliary data is normally included twice per interferogram. Note that only the first packet is currently included in monitoring.

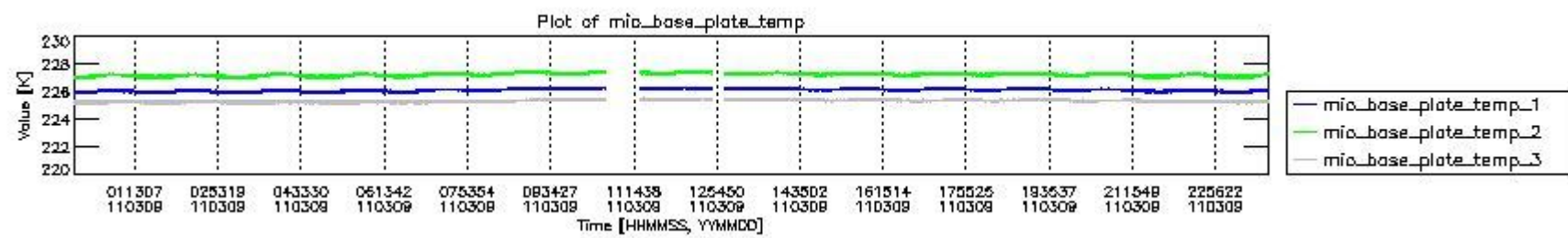
The following table shows the counts of various interferogram number of samples

Number of igm samples	Count [#]	Count [%]
88	2	0.0050061325
83338	1	0.0025030663

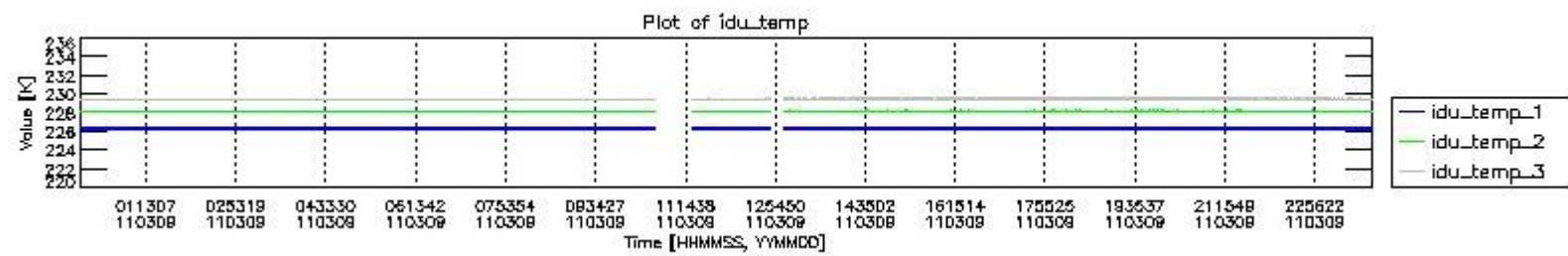
94003	1	0.0025030663
95678	1	0.0025030663
98847	1	0.0025030663
100111	1	0.0025030663
100173	1	0.0025030663
114135	1	0.0025030663
120305	1	0.0025030663
123398	1	0.0025030663
124099	1	0.0025030663
124800	37094	92.848740
124803	2840	7.1087082
125363	1	0.0025030663
125926	1	0.0025030663
126936	1	0.0025030663
147068	1	0.0025030663
149204	1	0.0025030663



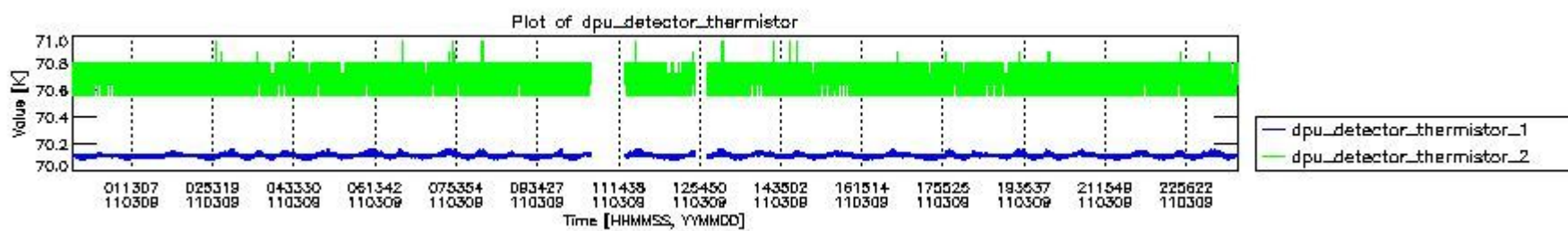
mipas_daily_report_level0_KSPT_L0_4504_N_20110309_0.PNG



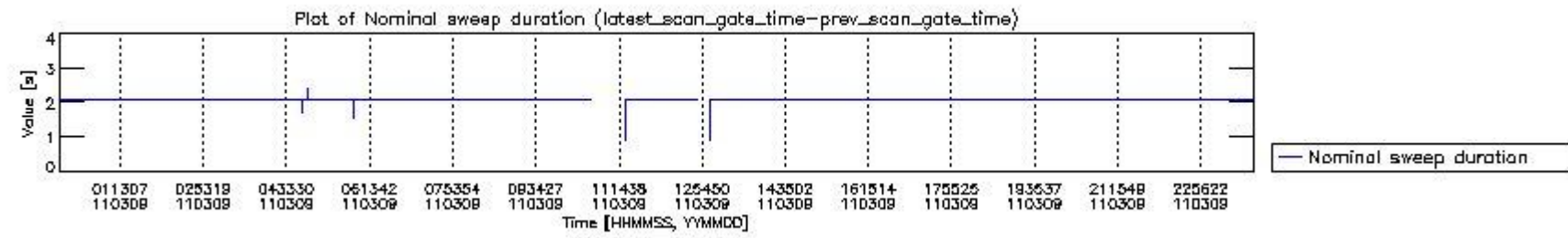
mipas_daily_report_level0_KSPT_L0_4504_N_20110309_1.PNG



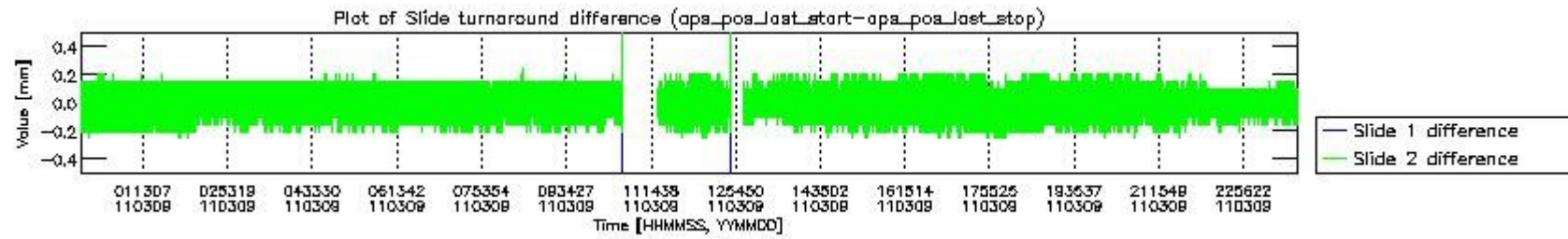
mipas_daily_report_level0_KSPT_L0_4504_N_20110309_2.PNG



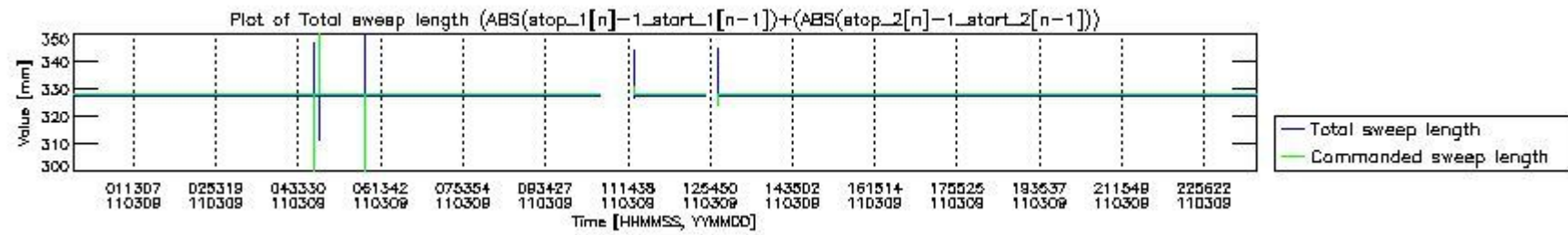
mipas_daily_report_level0_KSPT_L0_4504_N_20110309_3.PNG



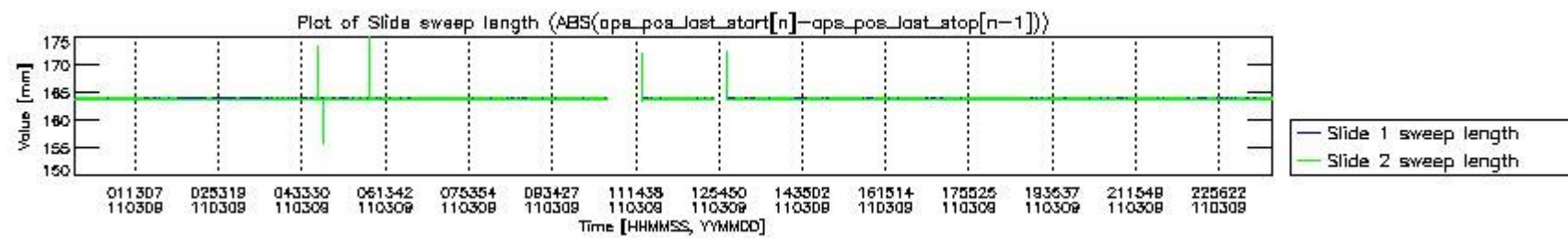
mipas_daily_report_level0_KSPT_L0_4504_N_20110309_4.PNG



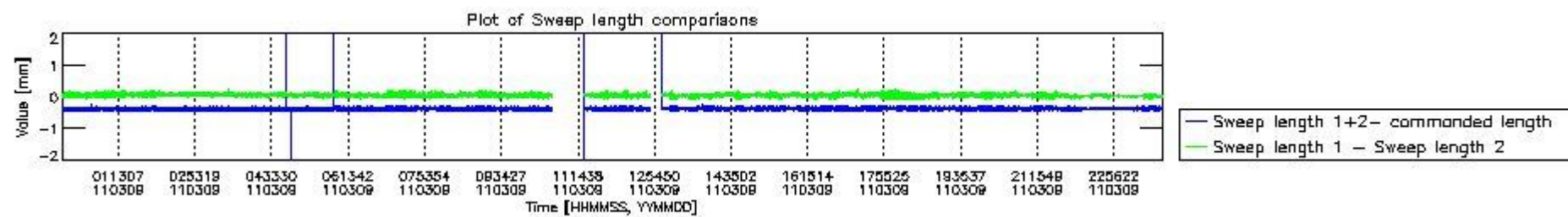
mipas_daily_report_level0_KSPT_L0_4504_N_20110309_5.PNG



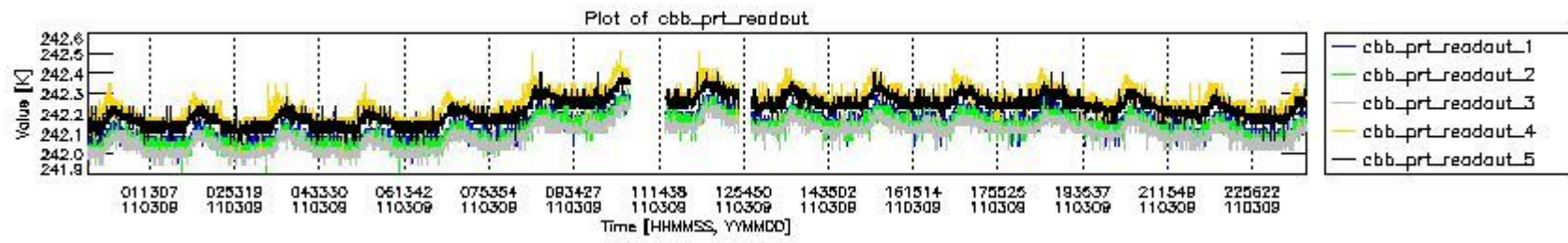
mipas_daily_report_level0_KSPT_L0_4504_N_20110309_6.PNG



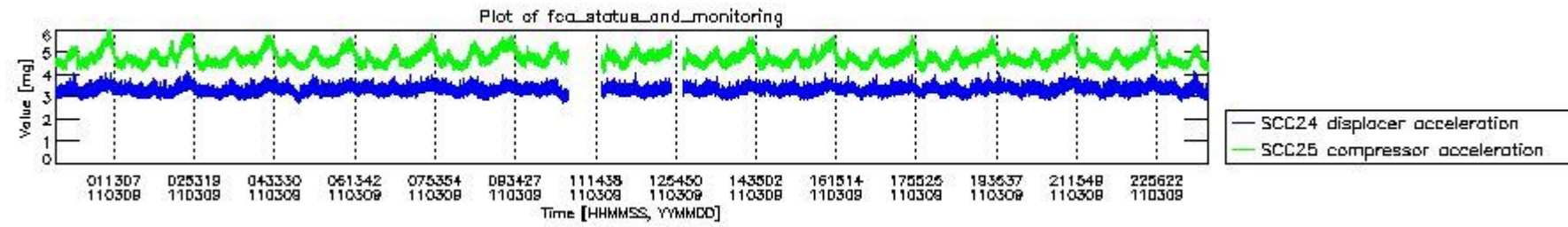
mipas_daily_report_level0_KSPT_L0_4504_N_20110309_7.PNG



mipas_daily_report_level0_KSPT_L0_4504_N_20110309_8.PNG



mipas_daily_report_level0_KSPT_L0_4504_N_20110309_9.PNG

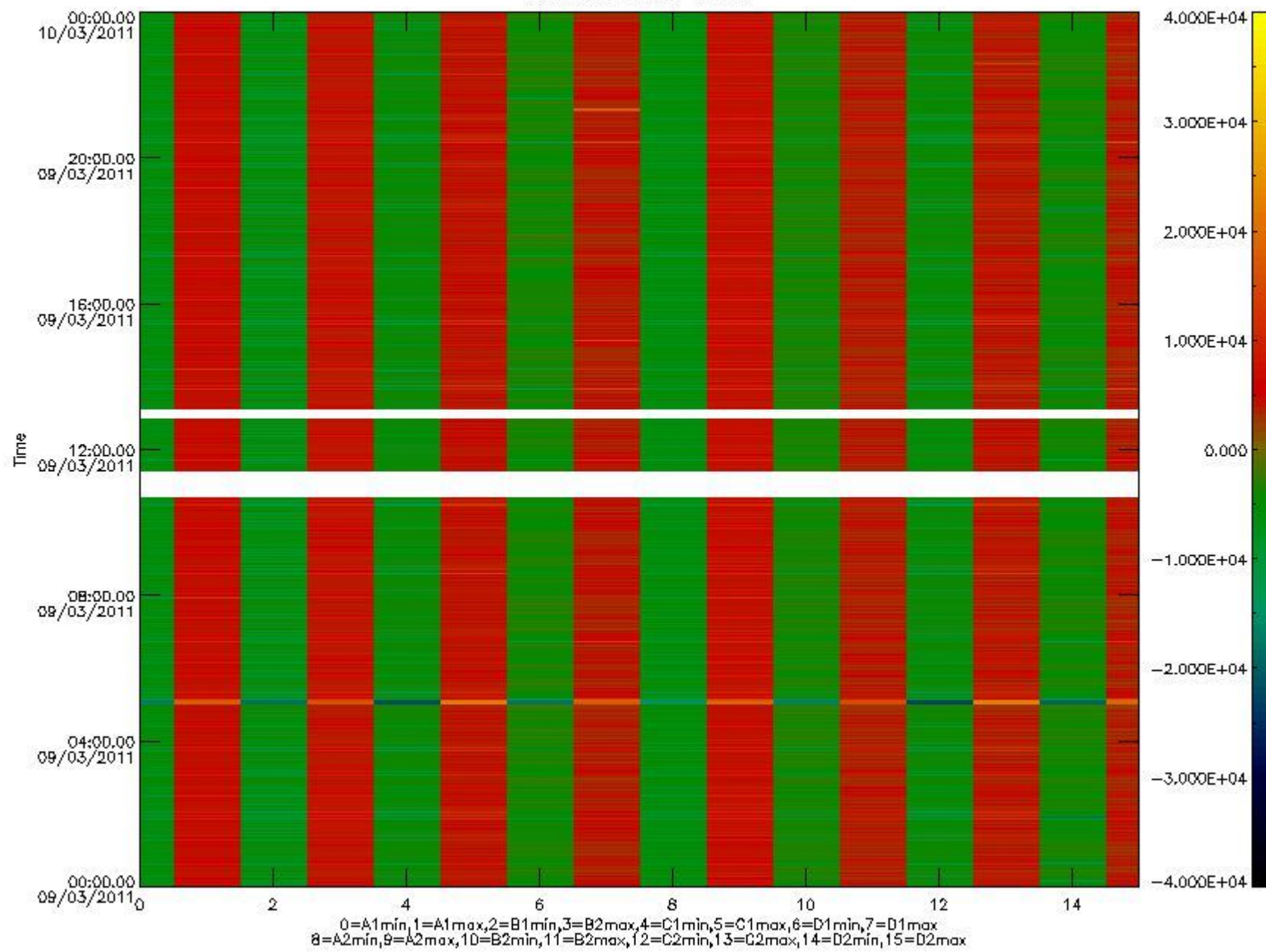


mipas_daily_report_level0_KSPT_L0_4504_N_20110309_10.PNG

The following table shows channel statistics for all channels for this day.

Channel	Min	Max	ADC
A1	-17497	18503	16bit
B1	-19052	16566	16bit
C1	-24677	22225	16bit
D1	-23169	32767	16bit
A2	-15208	18650	16bit
B2	-17168	16881	16bit
C2	-23344	23722	16bit
D2	-32768	27289	16bit

MIPNLOP_MIPSOUPAC_aux_fields_1gm_cal, channel statistics plot
Colour indicates value.



mipas_daily_report_level0_KSPT_L0_4504_N_20110309_11.PNG

0.3 ADF monitoring

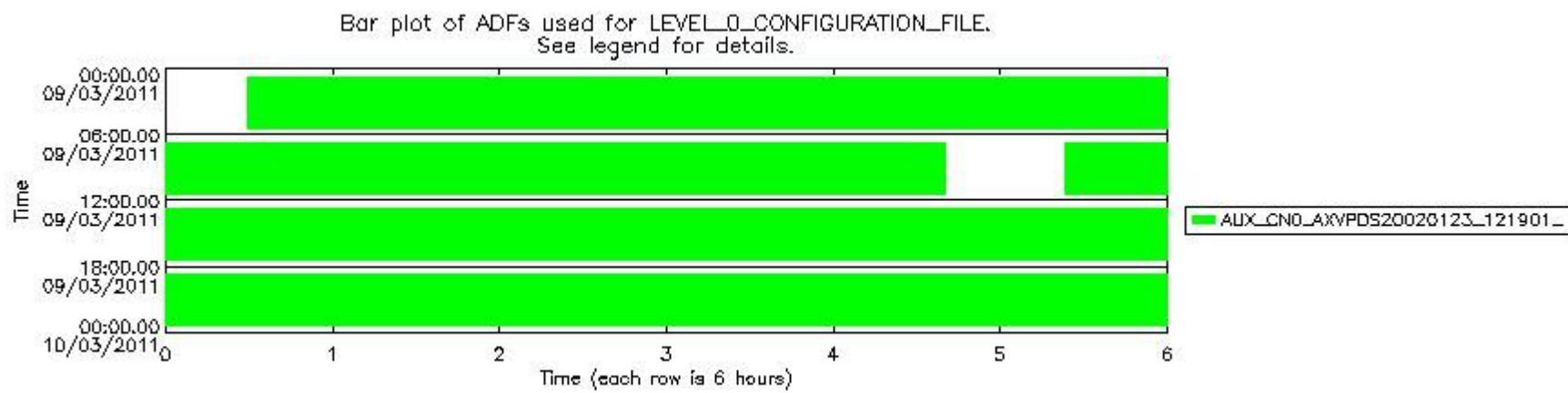
The use of ADFs is shown in two ways:

1. By means of two tables that can be used to find the ADF used for a specific product.
2. By means of plots that show changes in ADF using colours.

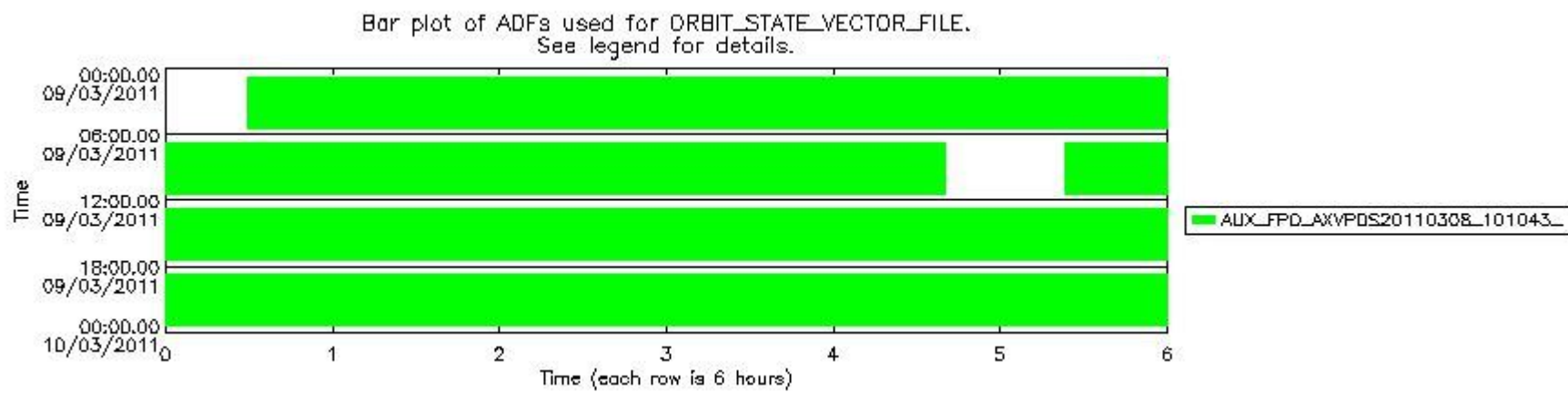
Number	ADF
0	AUX_CN0_AXVPDS20020123_121901_20020101_000000_20200101_000000
1	AUX_FPO_AXVPDS20110308_101043_20110307_183658_20110317_205047

Number	Product name	#CN0	#FPO
0	MIP_NL_0PNPDE20110309_002941_000058203100_00174_47171_3068.N1	0	1

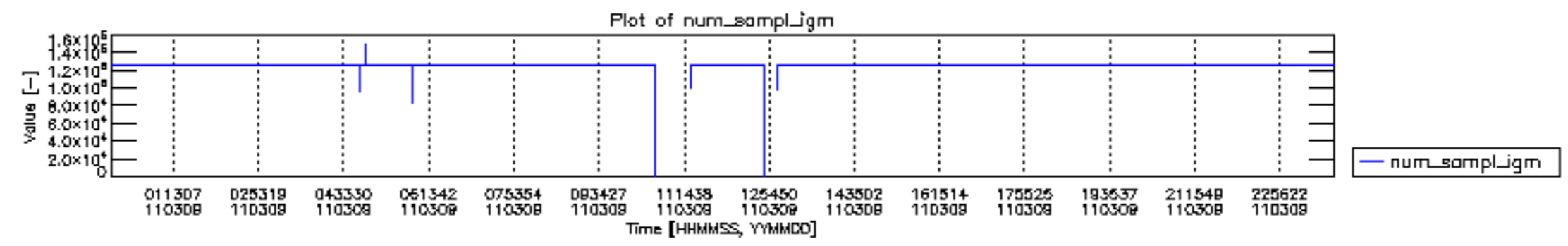
1	MIP_NL__0PNPDE20110309_020534_000045623100_00175_47172_3069.N1	0	1
2	MIP_NL__0PNPDE20110309_032103_000061333100_00176_47173_3070.N1	0	1
3	MIP_NL__0PNPDE20110309_050243_000060633100_00177_47174_3071.N1	0	1
4	MIP_NL__0PNPDK20110309_064313_000040903100_00178_47175_4510.N1	0	1
5	MIP_NL__0PNPDK20110309_075050_000060523100_00179_47176_4511.N1	0	1
6	MIP_NL__0PNPDK20110309_093058_000041403100_00180_47177_4512.N1	0	1
7	MIP_NL__0PNPDK20110309_112314_000051783100_00181_47178_4513.N1	0	1
8	MIP_NL__0PNPDK20110309_124912_000058903100_00182_47179_4514.N1	0	1
9	MIP_NL__0PNPDK20110309_142628_000059313100_00183_47180_4515.N1	0	1
10	MIP_NL__0PNPDK20110309_160420_000058663100_00184_47181_4516.N1	0	1
11	MIP_NL__0PNPDK20110309_174114_000059063100_00185_47182_4517.N1	0	1
12	MIP_NL__0PNPDK20110309_191831_000062463100_00186_47183_4518.N1	0	1
13	MIP_NL__0PNPDE20110309_210120_000042143100_00187_47184_3073.N1	0	1
14	MIP_NL__0PNPDE20110309_221031_000062423100_00187_47184_3074.N1	0	1
15	MIP_NL__0PNPDE20110309_235334_000058883100_00188_47185_3075.N1	0	1

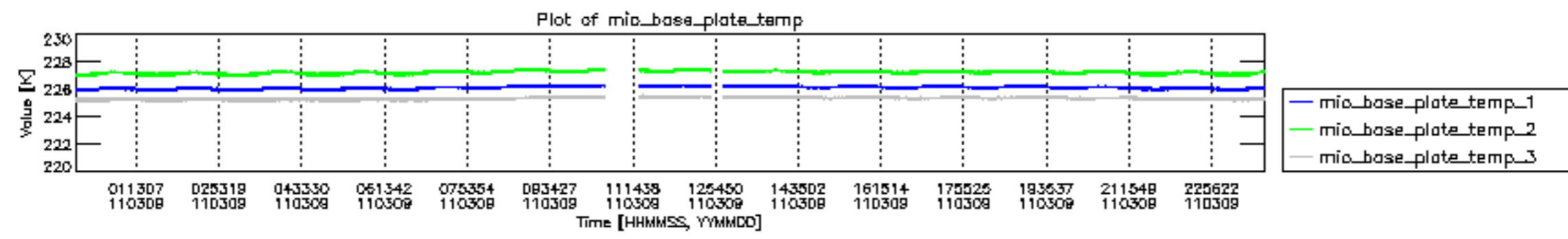


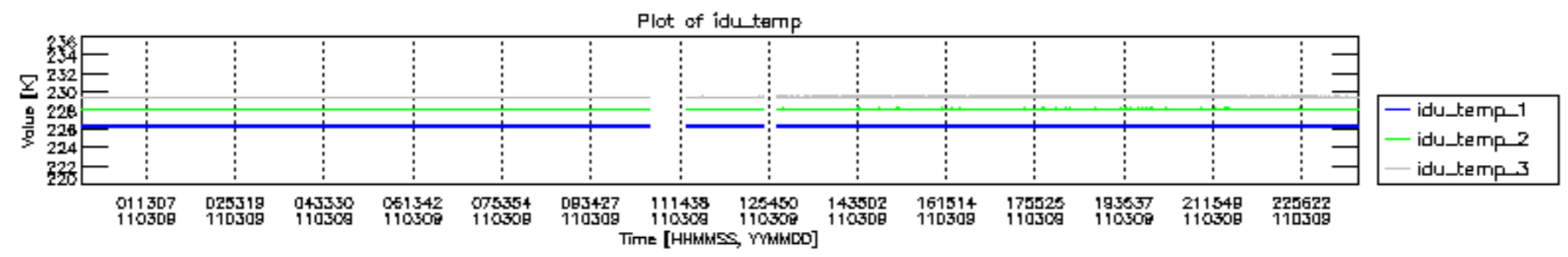
mipas_daily_report_level0_KSPT_L0_4504_N_20110309_12.PNG

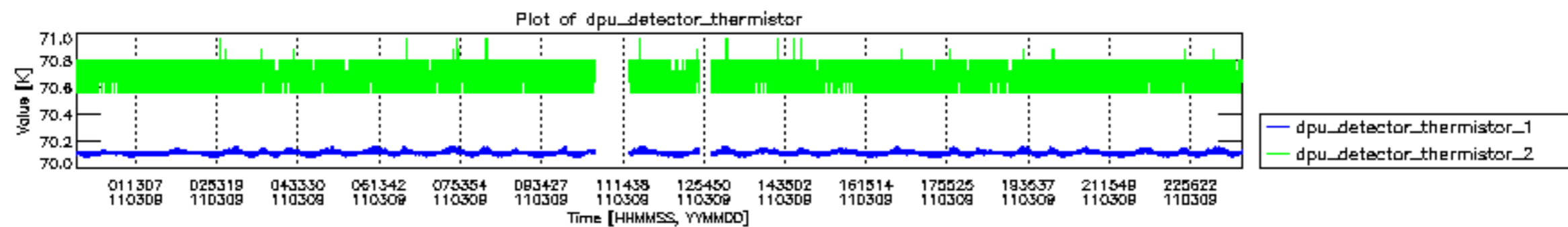


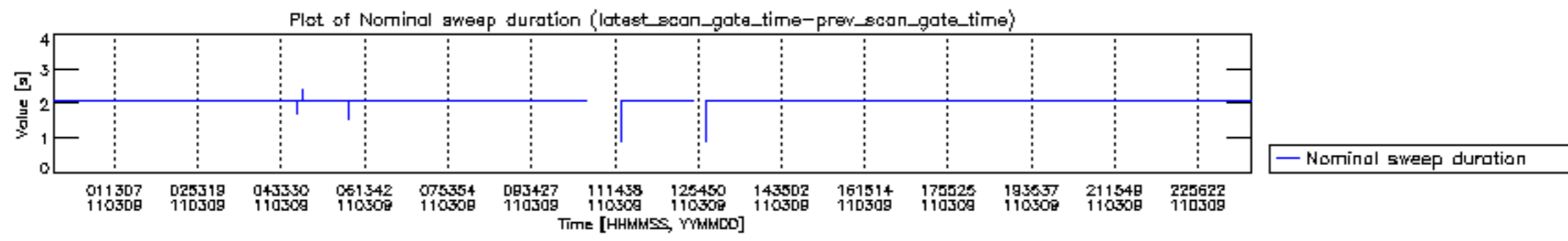
mipas_daily_report_level0_KSPT_L0_4504_N_20110309_13.PNG

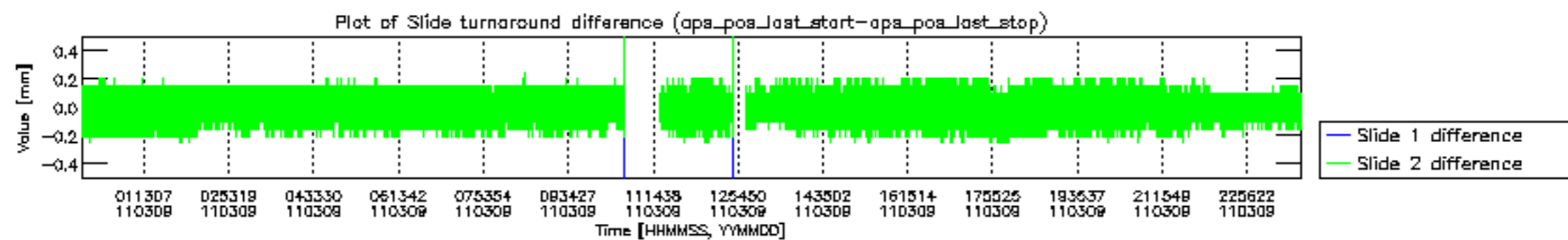


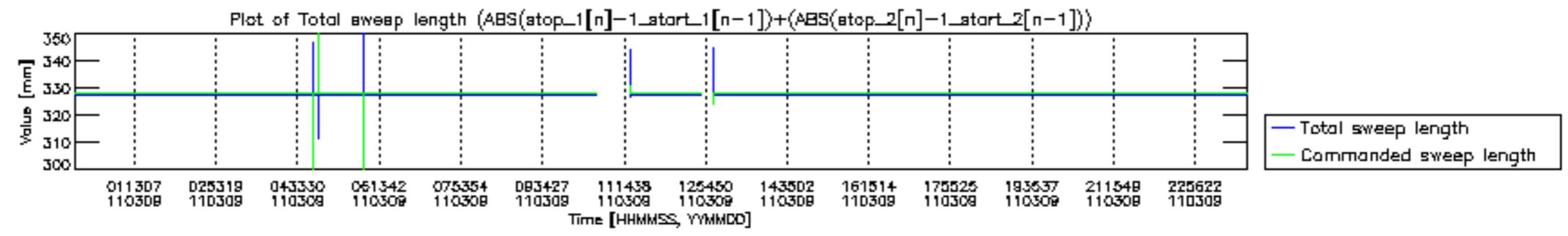


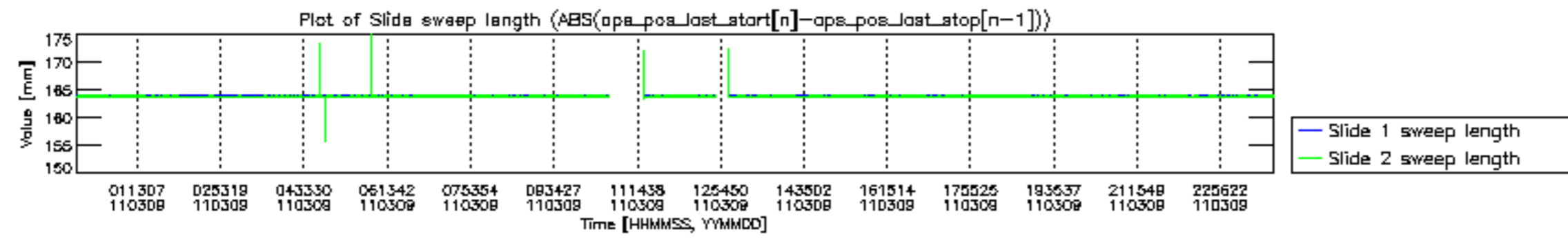


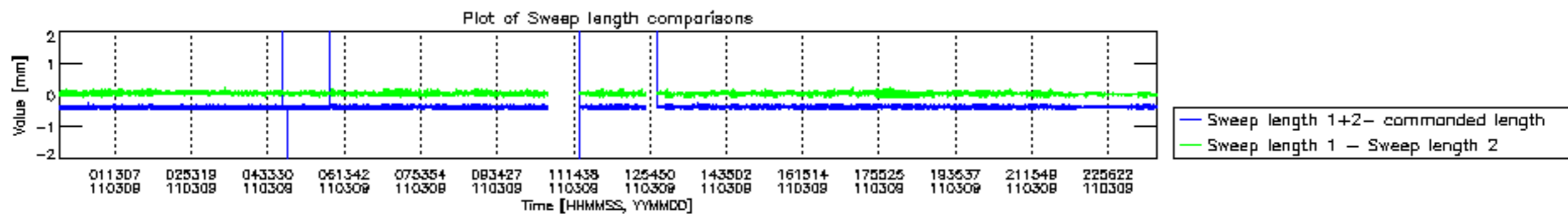


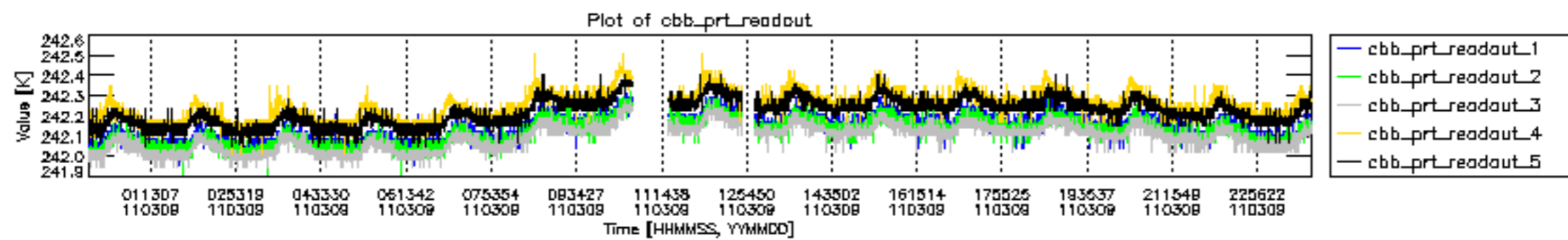


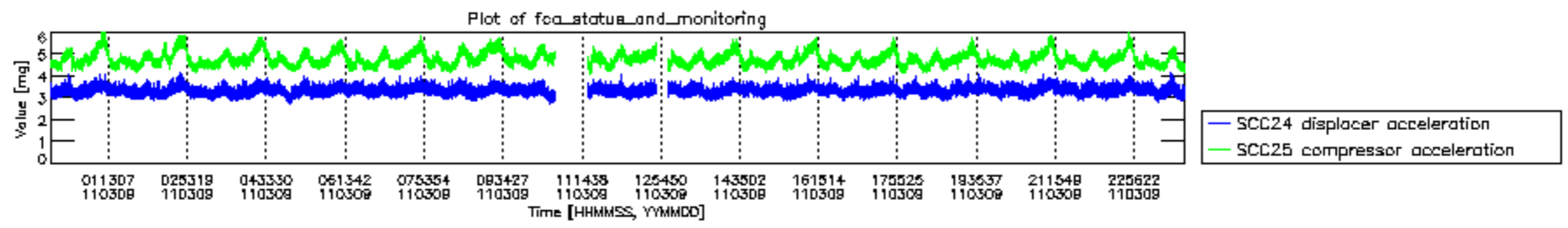












MIPNLOP_MIPSOUPAC_aux_fields_igm_cal, channel statistics plot
 Colour indicates value.

