

0. MIPAS Daily Report for level 0 products

[0.1 General Info](#)

[0.2 Instrument Operational Performance Parameters](#)

[0.3 ADF monitoring](#)

0.1 General Info

This report contains a daily analysis on parameters extracted from MIPAS level 0 data (The MIP_NL__0P product).

0.1.1 Report summary

The table below shows general characteristics of the data that are included into this report.

Item	Value
Report version	v1.6 08-11-2010
Time of report generation	12MAR2011 05:25:32
Data source version	KSPT_L0/4504-N
Processing scope for products	07MAR2011 00:00:00 to 08MAR2011 00:00:00
Start time of first product within scope	07MAR2011 00:02:25
Stop time of last product within scope	08MAR2011 01:08:27
Total number of level 0 products	15
Number of level 0 products with errors	0

0.1.2 Product Quality Indicators per product

The following table shows a summary for each product used in this report.

#	Product name	Start time	Stop time	Prod err	ISP err sign	ISP miss sign	ISP disc sign	rs sign
0	MIP_NL__0PNPDE20110307_000225_000059313100_00145_47142_3055.N1	07MAR2011 00:02:25	07MAR2011 01:41:15	0	0	0	0	0
1	MIP_NL__0PNPDE20110307_014009_000011583100_00146_47143_3056.N1	07MAR2011 01:40:09	07MAR2011 01:59:27	0	0	0	0	0
2	MIP_NL__0PNPDE20110307_051434_000037453100_00148_47145_3057.N1	07MAR2011 05:14:34	07MAR2011 06:16:59	0	0	0	0	0
3	MIP_NL__0PNPDK20110307_061626_000040983100_00149_47146_4493.N1	07MAR2011 06:16:26	07MAR2011 07:24:44	0	0	0	0	0
4	MIP_NL__0PNPDK20110307_072408_000061233100_00150_47147_4494.N1	07MAR2011 07:24:08	07MAR2011 09:06:11	0	0	0	0	0
5	MIP_NL__0PNPDK20110307_090527_000059523100_00151_47148_4495.N1	07MAR2011 09:05:27	07MAR2011 10:44:39	0	0	0	0	0
6	MIP_NL__0PNPDK20110307_104328_000059753100_00152_47149_4496.N1	07MAR2011 10:43:28	07MAR2011 12:23:02	0	0	0	0	0
7	MIP_NL__0PNPDK20110307_122204_000060543100_00153_47150_4497.N1	07MAR2011 12:22:04	07MAR2011 14:02:58	0	0	0	0	0
8	MIP_NL__0PNPDK20110307_140201_000057343100_00154_47151_4498.N1	07MAR2011 14:02:01	07MAR2011 15:37:35	0	0	0	0	0
9	MIP_NL__0PNPDK20110307_153610_000060923100_00155_47152_4499.N1	07MAR2011 15:36:10	07MAR2011 17:17:41	0	0	0	0	0
10	MIP_NL__0PNPDK20110307_171641_000059023100_00156_47153_4500.N1	07MAR2011 17:16:41	07MAR2011 18:55:02	0	0	0	0	0
11	MIP_NL__0PNPDK20110307_185400_000060063100_00157_47154_4501.N1	07MAR2011 18:54:00	07MAR2011 20:34:06	0	0	0	0	0
12	MIP_NL__0PNPDE20110307_203324_000042893100_00158_47155_3058.N1	07MAR2011 20:33:24	07MAR2011 21:44:53	0	0	0	0	0
13	MIP_NL__0PNPDE20110307_214346_000062673100_00158_47155_3059.N1	07MAR2011 21:43:46	07MAR2011 23:28:13	0	0	0	0	0
14	MIP_NL__0PNPDE20110307_232712_000060753100_00159_47156_3060.N1	07MAR2011 23:27:12	08MAR2011 01:08:27	0	0	0	0	0

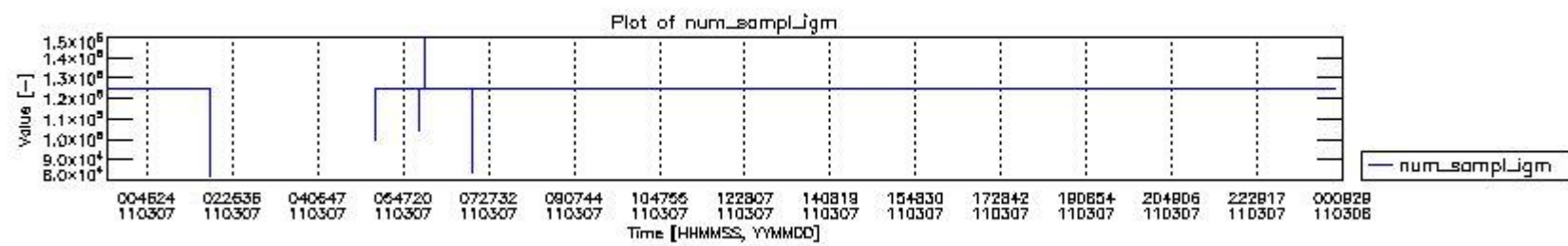
0.2 Instrument Operational Performance Parameters

The following plots give an overview of various instrument parameters for this day. The instrument parameters are part of the auxiliary data field within the source packets of the MIP_NL__0P product. The auxiliary data is normally included twice per interferogram. Note that only the first packet is currently included in monitoring.

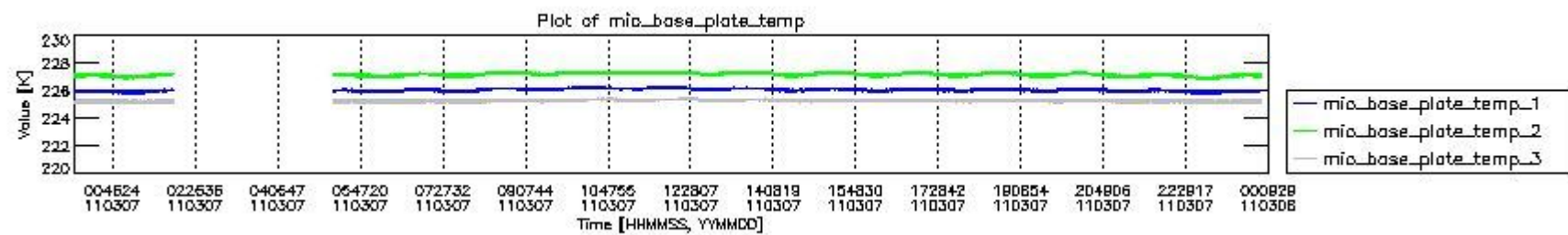
The following table shows the counts of various interferogram number of samples

Number of igm samples	Count [#]	Count [%]
81554	1	0.0027783952
84082	1	0.0027783952
93111	1	0.0027783952

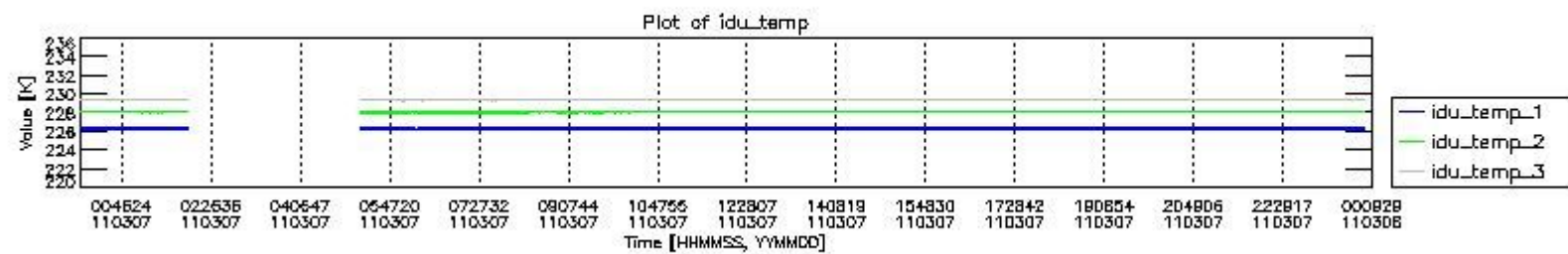
94375	1	0.0027783952
99219	1	0.0027783952
104600	1	0.0027783952
104634	1	0.0027783952
113243	1	0.0027783952
114507	1	0.0027783952
124142	1	0.0027783952
124471	1	0.0027783952
124766	1	0.0027783952
124800	33424	92.865081
124803	2553	7.0932429
127233	1	0.0027783952
147365	1	0.0027783952
149798	1	0.0027783952



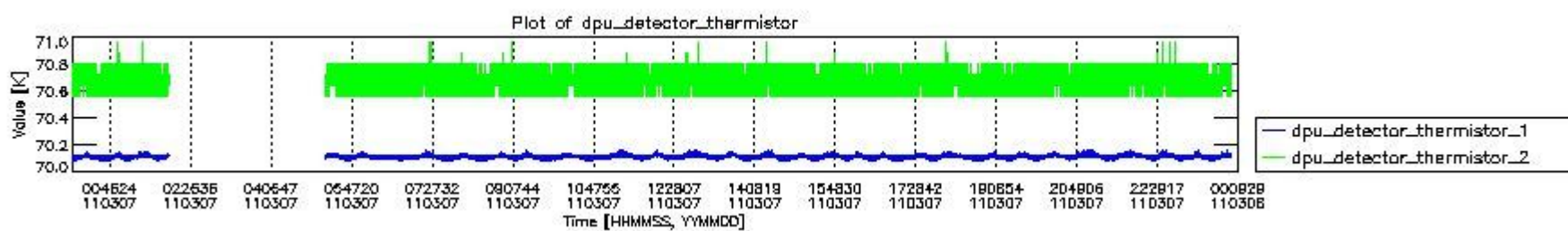
mipas_daily_report_level0_KSPT_L0_4504_N_20110307_0.PNG



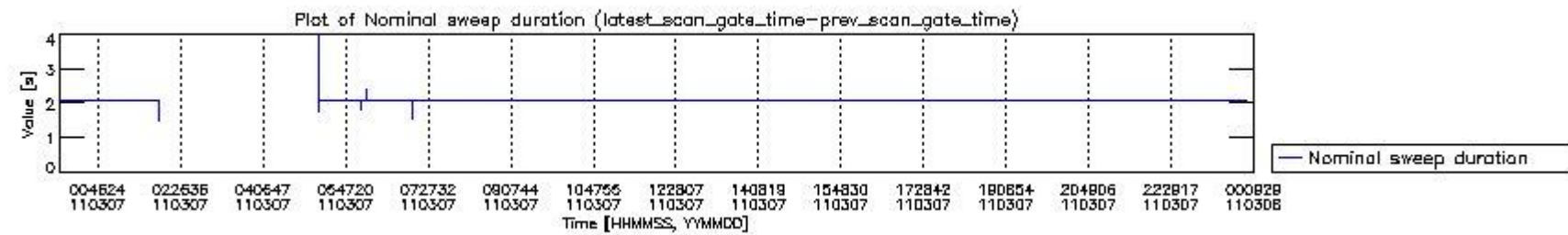
mipas_daily_report_level0_KSPT_L0_4504_N_20110307_1.PNG



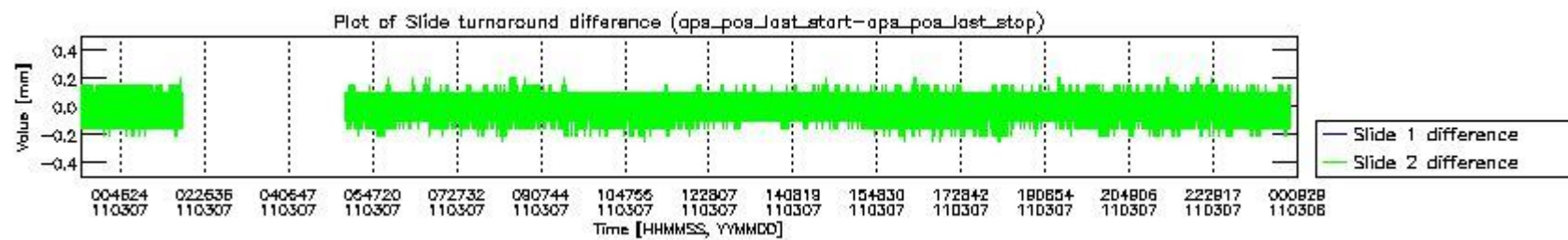
mipas_daily_report_level0_KSPT_L0_4504_N_20110307_2.PNG



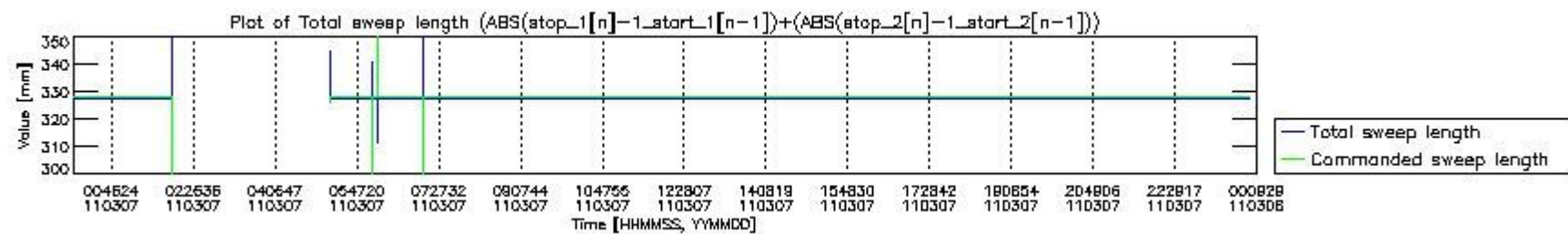
mipas_daily_report_level0_KSPT_L0_4504_N_20110307_3.PNG



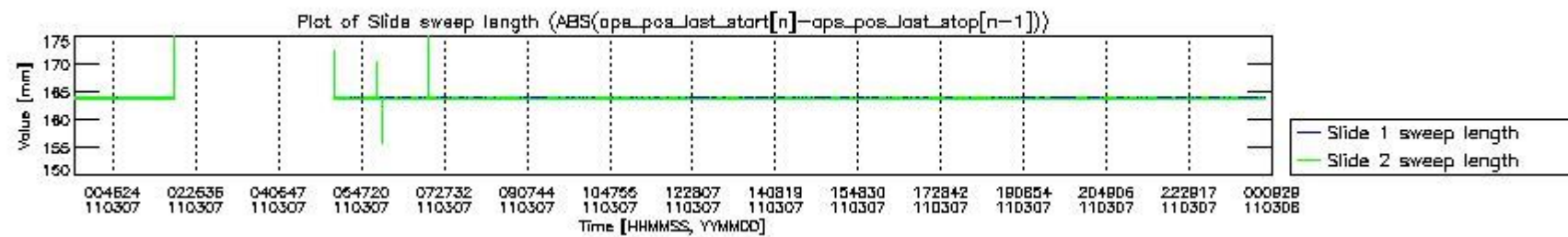
mipas_daily_report_level0_KSPT_L0_4504_N_20110307_4.PNG



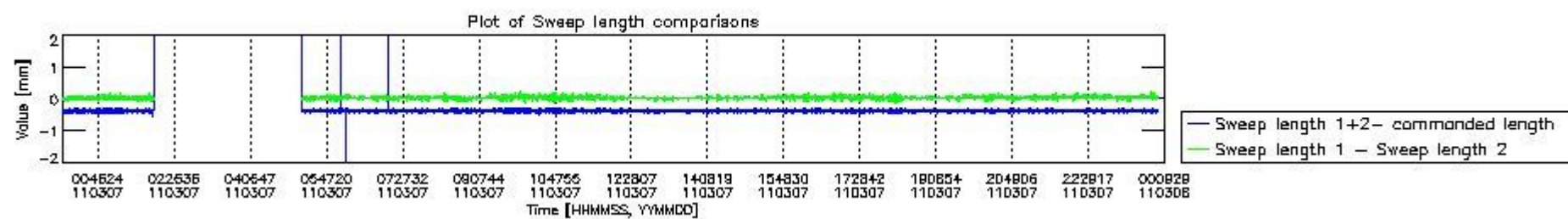
mipas_daily_report_level0_KSPT_L0_4504_N_20110307_5.PNG



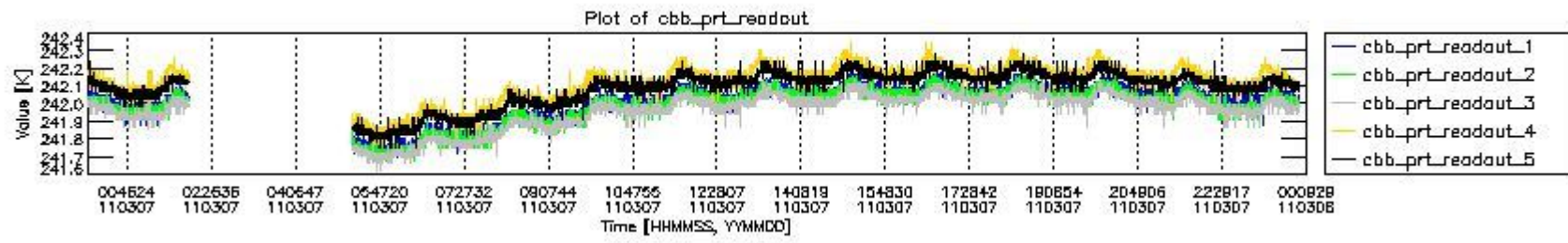
mipas_daily_report_level0_KSPT_L0_4504_N_20110307_6.PNG



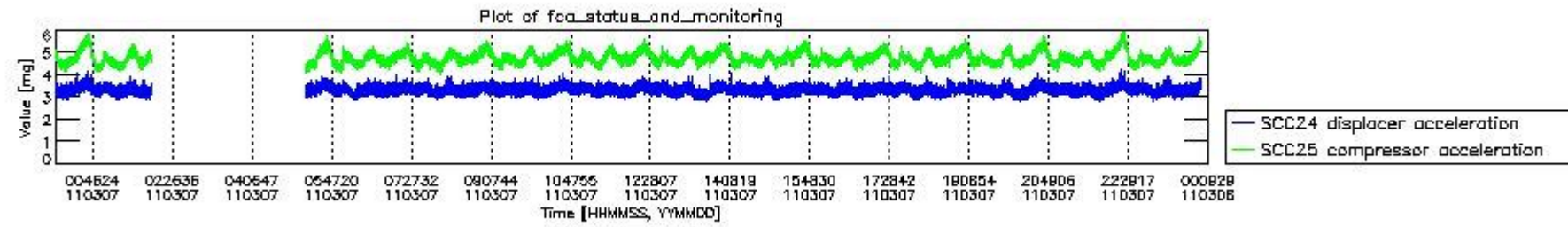
mipas_daily_report_level0_KSPT_L0_4504_N_20110307_7.PNG



mipas_daily_report_level0_KSPT_L0_4504_N_20110307_8.PNG



mipas_daily_report_level0_KSPT_L0_4504_N_20110307_9.PNG

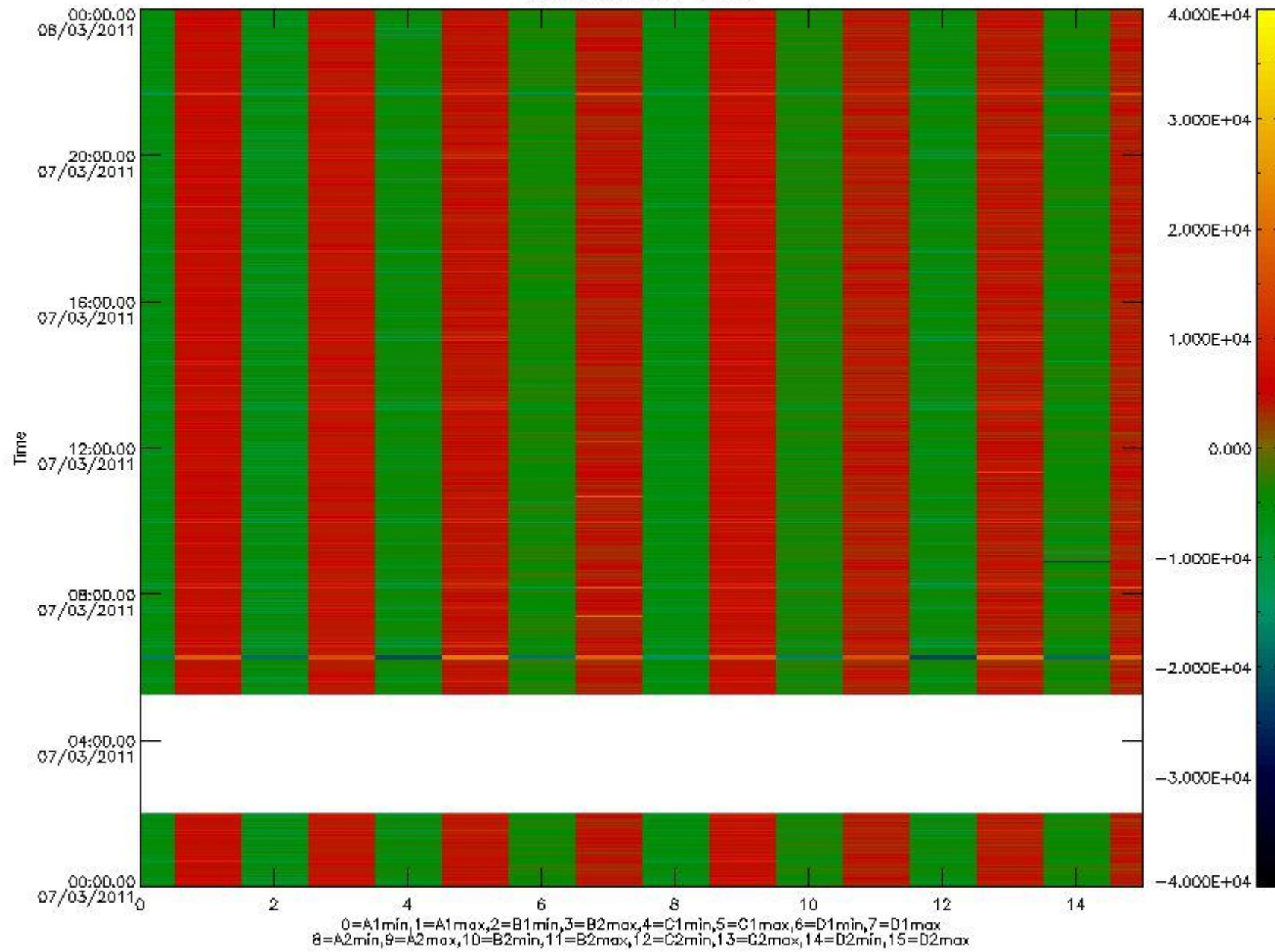


mipas_daily_report_level0_KSPT_L0_4504_N_20110307_10.PNG

The following table shows channel statistics for all channels for this day.

Channel	Min	Max	ADC
A1	-32768	32767	16bit
B1	-32768	32767	16bit
C1	-22217	22080	16bit
D1	-32768	32767	16bit
A2	-32768	28244	16bit
B2	-32768	32767	16bit
C2	-23131	24346	16bit
D2	-32768	32767	16bit

MIPNLOP_MIPSOUPAC_aux_fields_igm_cal, channel statistics plot
Colour indicates value.



mipas_daily_report_level0_KSPT_L0_4504_N_20110307_11.PNG

0.3 ADF monitoring

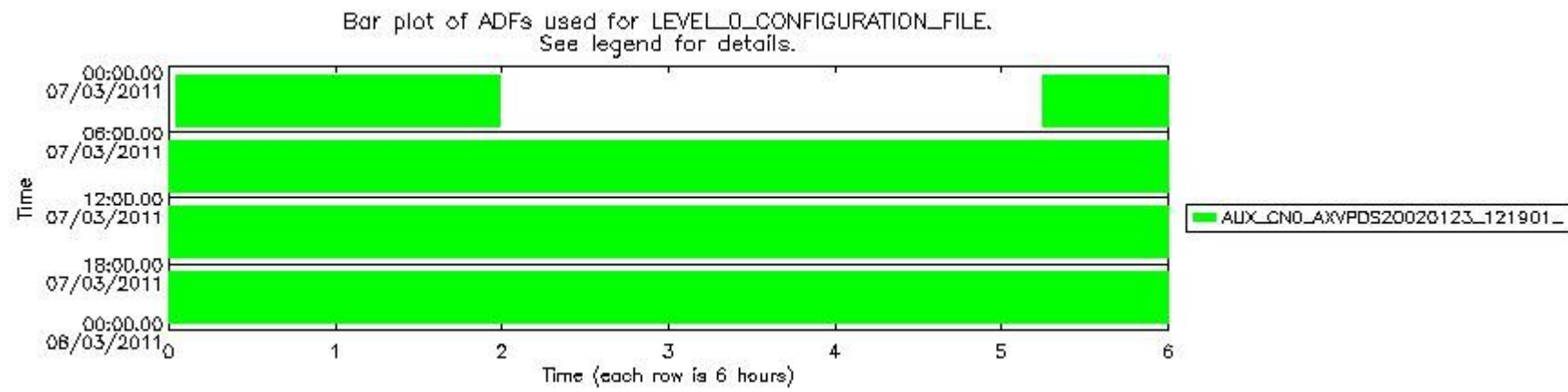
The use of ADFs is shown in two ways:

1. By means of two tables that can be used to find the ADF used for a specific product.
2. By means of plots that show changes in ADF using colours.

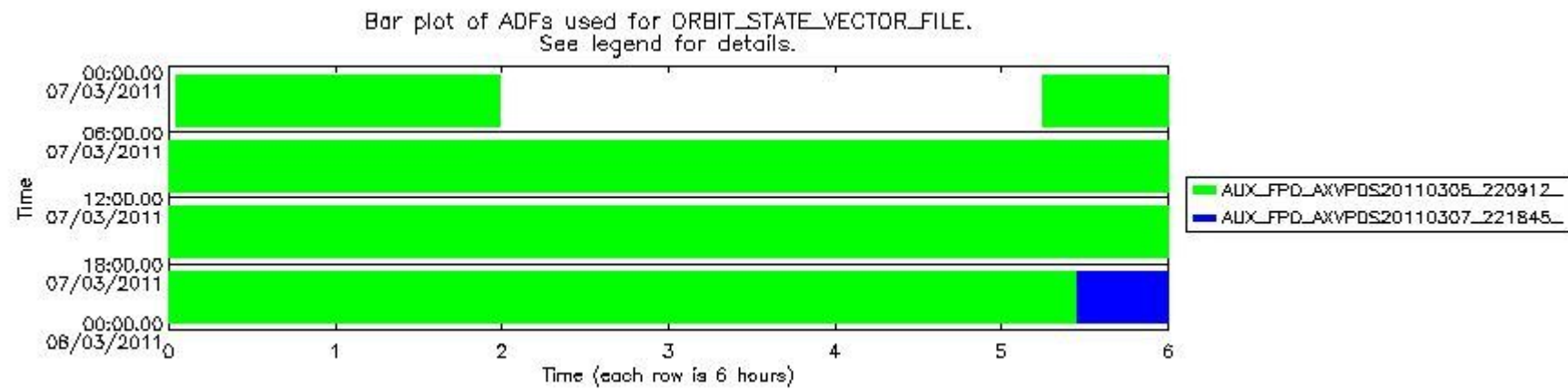
Number	ADF
0	AUX_CN0_AXVPDS20020123_121901_20020101_000000_20200101_000000
1	AUX_FPO_AXVPDS20110305_220912_20110305_195026_20110315_202402
2	AUX_FPO_AXVPDS20110307_221845_20110306_191342_20110316_212732

Number	Product name	#CN0	#FPO
--------	--------------	------	------

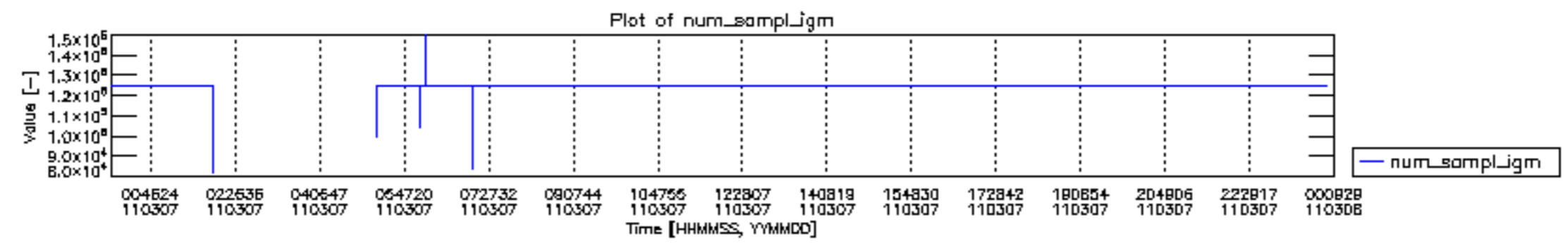
0	MIP_NL__0PNPDE20110307_000225_000059313100_00145_47142_3055.N1	0	1
1	MIP_NL__0PNPDE20110307_014009_000011583100_00146_47143_3056.N1	0	1
2	MIP_NL__0PNPDE20110307_051434_000037453100_00148_47145_3057.N1	0	1
3	MIP_NL__0PNPDK20110307_061626_000040983100_00149_47146_4493.N1	0	1
4	MIP_NL__0PNPDK20110307_072408_000061233100_00150_47147_4494.N1	0	1
5	MIP_NL__0PNPDK20110307_090527_000059523100_00151_47148_4495.N1	0	1
6	MIP_NL__0PNPDK20110307_104328_000059753100_00152_47149_4496.N1	0	1
7	MIP_NL__0PNPDK20110307_122204_000060543100_00153_47150_4497.N1	0	1
8	MIP_NL__0PNPDK20110307_140201_000057343100_00154_47151_4498.N1	0	1
9	MIP_NL__0PNPDK20110307_153610_000060923100_00155_47152_4499.N1	0	1
10	MIP_NL__0PNPDK20110307_171641_000059023100_00156_47153_4500.N1	0	1
11	MIP_NL__0PNPDK20110307_185400_000060063100_00157_47154_4501.N1	0	1
12	MIP_NL__0PNPDE20110307_203324_000042893100_00158_47155_3058.N1	0	1
13	MIP_NL__0PNPDE20110307_214346_000062673100_00158_47155_3059.N1	0	1
14	MIP_NL__0PNPDE20110307_232712_000060753100_00159_47156_3060.N1	0	2

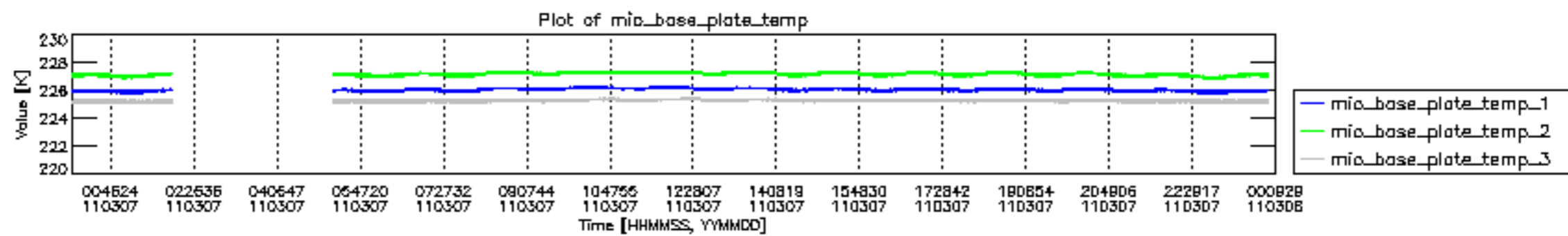


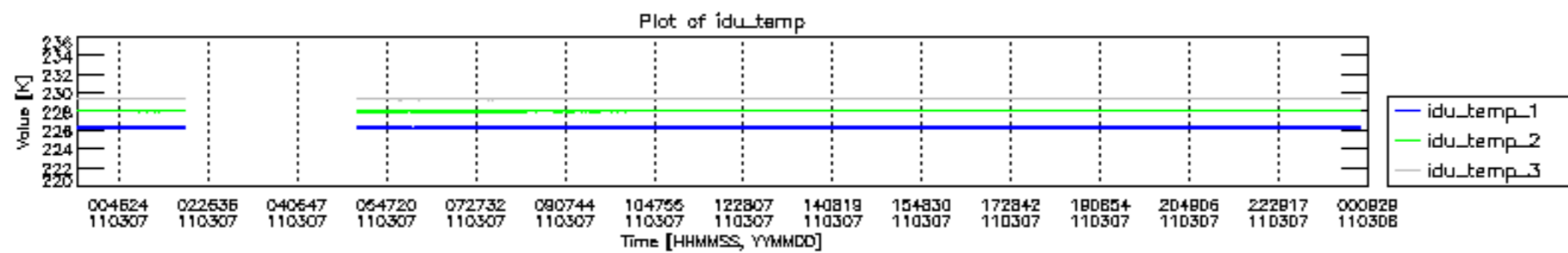
mipas_daily_report_level0_KSPT_L0_4504_N_20110307_12.PNG

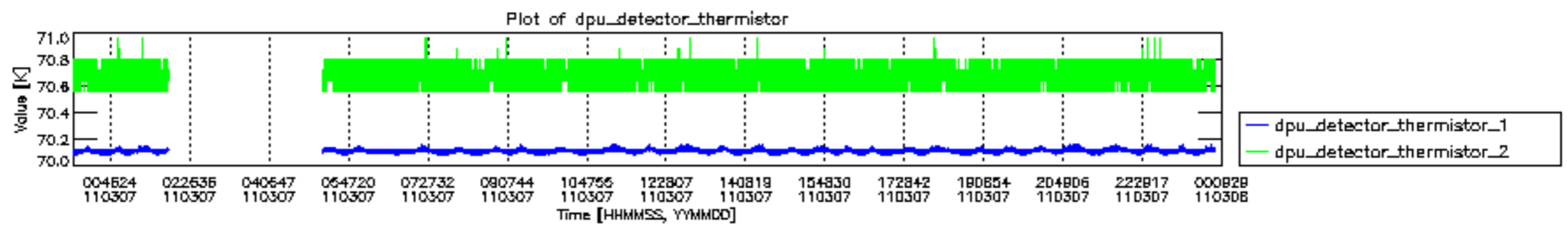


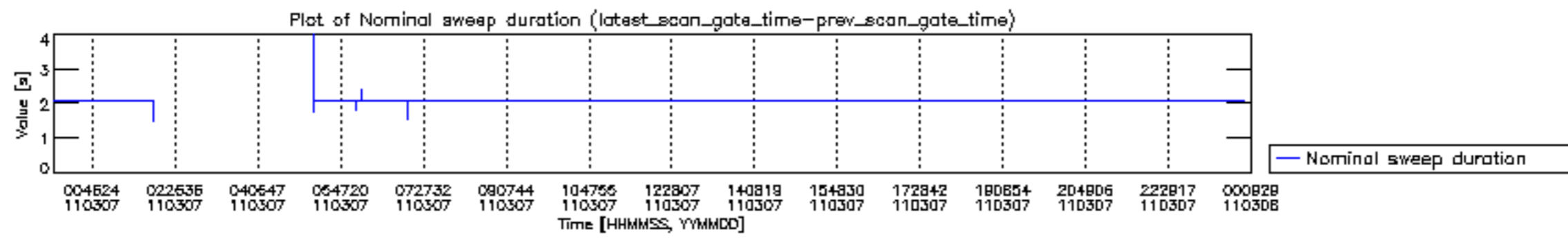
mipas_daily_report_level0_KSPT_L0_4504_N_20110307_13.PNG

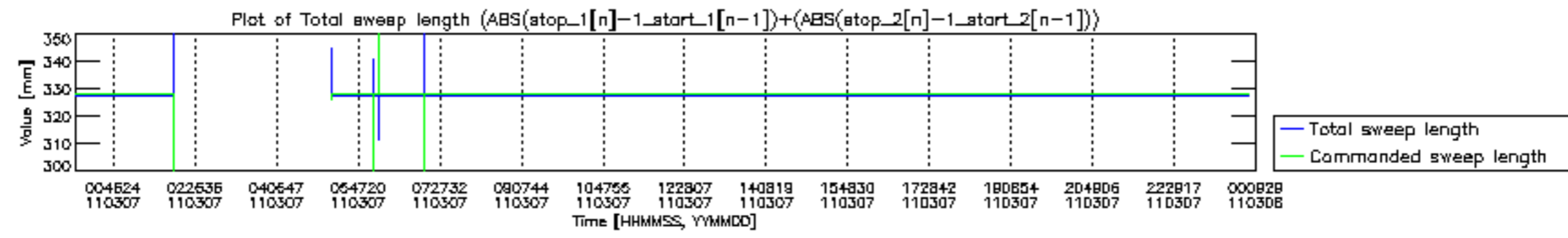


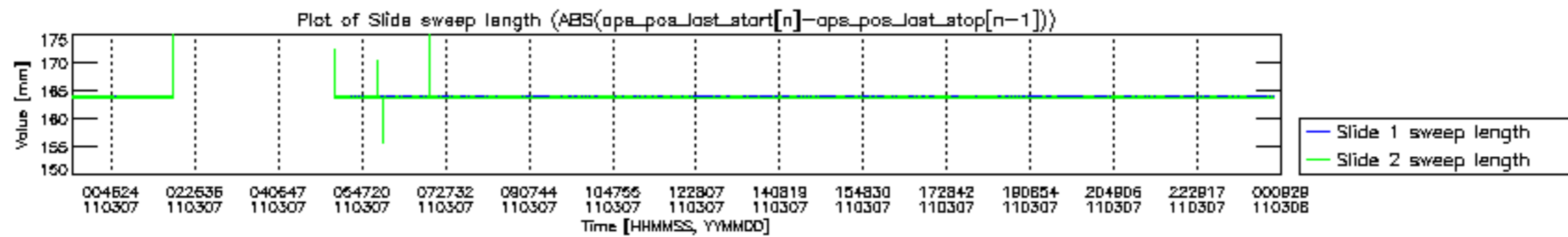


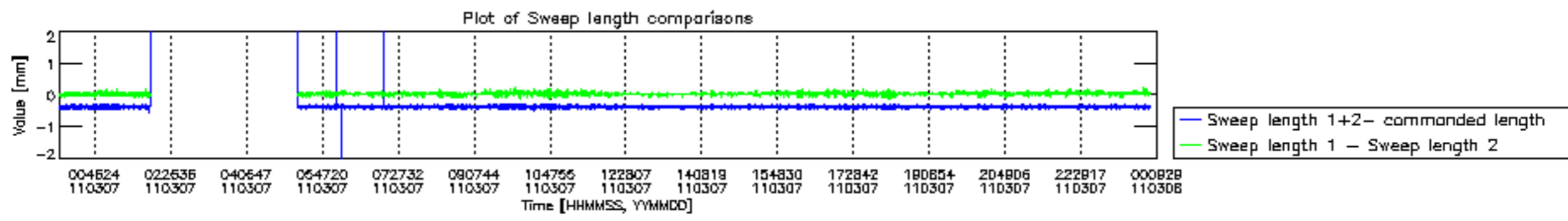


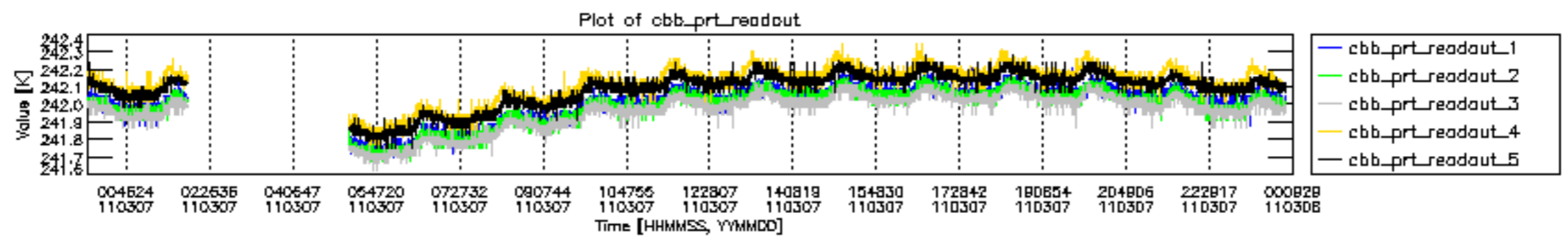


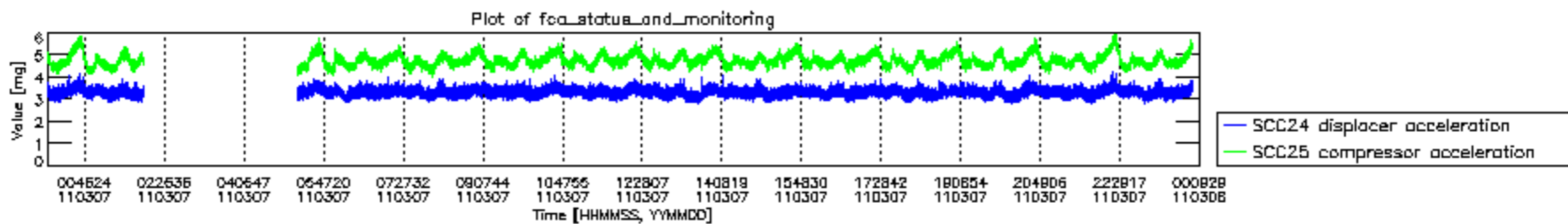












MIPNLOP_MIPSOUPAC_aux_fields_igm_cal, channel statistics plot
 Colour indicates value.

