

0. MIPAS Daily Report for level 0 products

[0.1 General Info](#)

[0.2 Instrument Operational Performance Parameters](#)

[0.3 ADF monitoring](#)

0.1 General Info

This report contains a daily analysis on parameters extracted from MIPAS level 0 data (The MIP_NL__0P product).

0.1.1 Report summary

The table below shows general characteristics of the data that are included into this report.

Item	Value
Report version	v1.6 08-11-2010
Time of report generation	11MAR2011 05:22:31
Data source version	KSPT_L0/4504-N
Processing scope for products	06MAR2011 00:00:00 to 07MAR2011 00:00:00
Start time of first product within scope	06MAR2011 00:38:55
Stop time of last product within scope	07MAR2011 00:03:27
Total number of level 0 products	16
Number of level 0 products with errors	0

0.1.2 Product Quality Indicators per product

The following table shows a summary for each product used in this report.

#	Product name	Start time	Stop time	Prod err	ISP err sign	ISP miss sign	ISP disc sign	rs sign
0	MIP_NL__0PNPDE20110306_003855_000058153100_00131_47128_3048.N1	06MAR2011 00:38:55	06MAR2011 02:15:51	0	0	0	0	0
1	MIP_NL__0PNPDE20110306_005852_000046193100_00132_47129_6667.N1	06MAR2011 00:58:52	06MAR2011 02:15:51	0	0	0	0	0
2	MIP_NL__0PNPDE20110306_021444_000046193100_00132_47129_3049.N1	06MAR2011 02:14:44	06MAR2011 03:31:43	0	0	0	0	0
3	MIP_NL__0PNPDE20110306_033109_000060943100_00133_47130_3050.N1	06MAR2011 03:31:09	06MAR2011 05:12:43	0	0	0	0	0
4	MIP_NL__0PNPDE20110306_051210_000060703100_00134_47131_3051.N1	06MAR2011 05:12:10	06MAR2011 06:53:20	0	0	0	0	0
5	MIP_NL__0PNPDE20110306_060431_000029293100_00135_47132_3052.N1	06MAR2011 06:04:31	06MAR2011 06:53:20	0	0	0	0	0
6	MIP_NL__0PNPDK20110306_080025_000060563100_00136_47133_4485.N1	06MAR2011 08:00:25	06MAR2011 09:41:21	0	0	0	0	0
7	MIP_NL__0PNPDK20110306_094014_000060963100_00137_47134_4486.N1	06MAR2011 09:40:14	06MAR2011 11:21:50	0	0	0	0	0
8	MIP_NL__0PNPDK20110306_112115_000059583100_00138_47135_4487.N1	06MAR2011 11:21:15	06MAR2011 13:00:33	0	0	0	0	0
9	MIP_NL__0PNPDK20110306_125936_000059273100_00139_47136_4488.N1	06MAR2011 12:59:36	06MAR2011 14:38:23	0	0	0	0	0
10	MIP_NL__0PNPDK20110306_143724_000058563100_00140_47137_4489.N1	06MAR2011 14:37:24	06MAR2011 16:15:00	0	0	0	0	0
11	MIP_NL__0PNPDK20110306_161401_000059473100_00141_47138_4490.N1	06MAR2011 16:14:01	06MAR2011 17:53:09	0	0	0	0	0
12	MIP_NL__0PNPDK20110306_175210_000058793100_00142_47139_4491.N1	06MAR2011 17:52:10	06MAR2011 19:30:09	0	0	0	0	0
13	MIP_NL__0PNPDK20110306_192914_000061423100_00143_47140_4492.N1	06MAR2011 19:29:14	06MAR2011 21:11:36	0	0	0	0	0
14	MIP_NL__0PNPDE20110306_211052_000042473100_00144_47141_3053.N1	06MAR2011 21:10:52	06MAR2011 22:21:39	0	0	0	0	0
15	MIP_NL__0PNPDE20110306_222032_000061753100_00144_47141_3054.N1	06MAR2011 22:20:32	07MAR2011 00:03:27	0	0	0	0	0

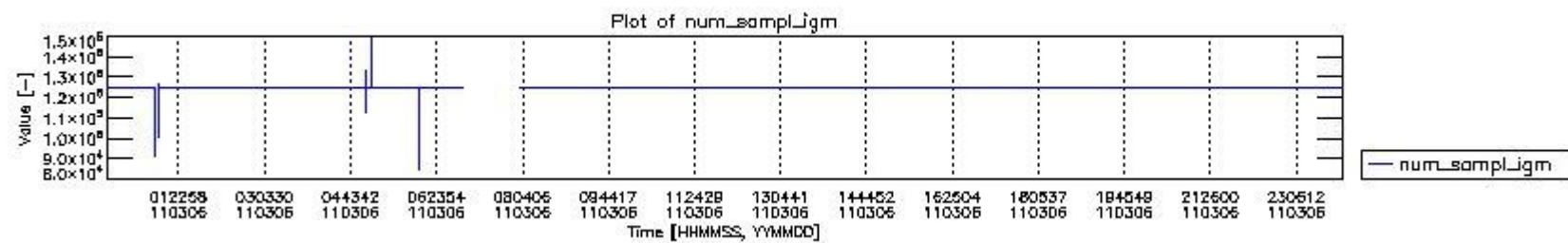
0.2 Instrument Operational Performance Parameters

The following plots give an overview of various instrument parameters for this day. The instrument parameters are part of the auxiliary data field within the source packets of the MIP_NL__0P product. The auxiliary data is normally included twice per interferogram. Note that only the first packet is currently included in monitoring.

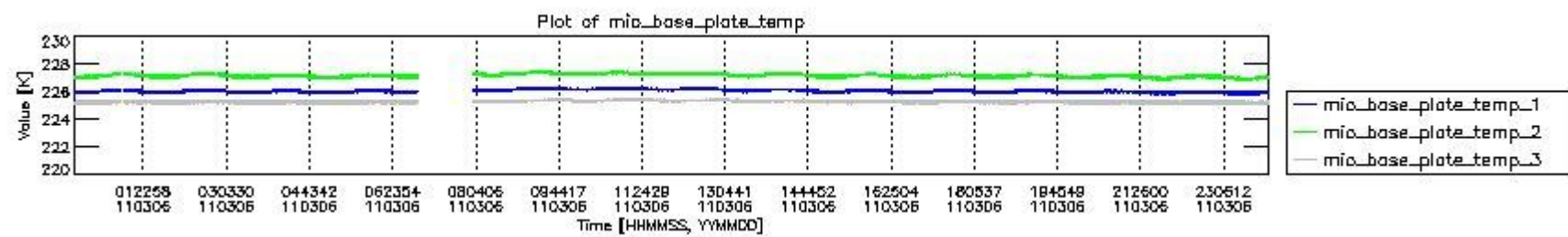
The following table shows the counts of various interferogram number of samples

Number of igm samples	Count [#]	Count [%]
84676	1	0.0025296603
91664	1	0.0025296603

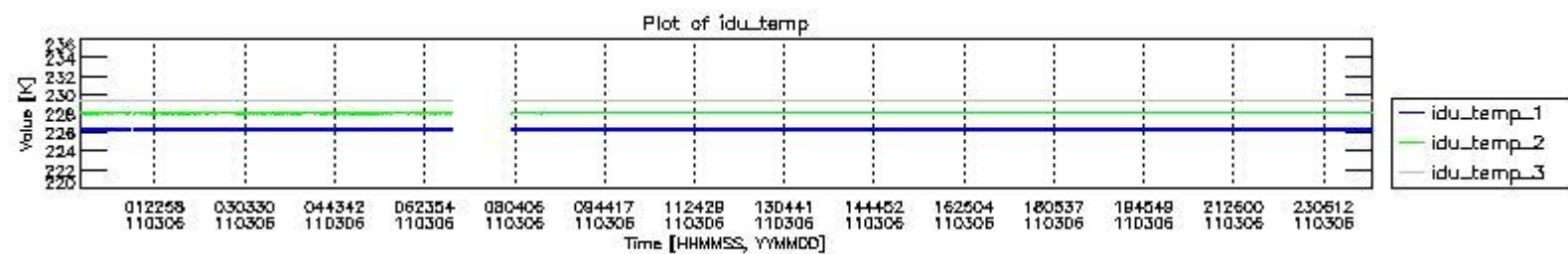
94672	1	0.0025296603
98166	1	0.0025296603
100632	1	0.0025296603
112960	1	0.0025296603
114804	1	0.0025296603
118298	1	0.0025296603
121252	1	0.0025296603
124800	36732	92.919481
124803	2784	7.0425742
125884	1	0.0025296603
126968	1	0.0025296603
127085	1	0.0025296603
133092	1	0.0025296603
147217	1	0.0025296603
149502	1	0.0025296603



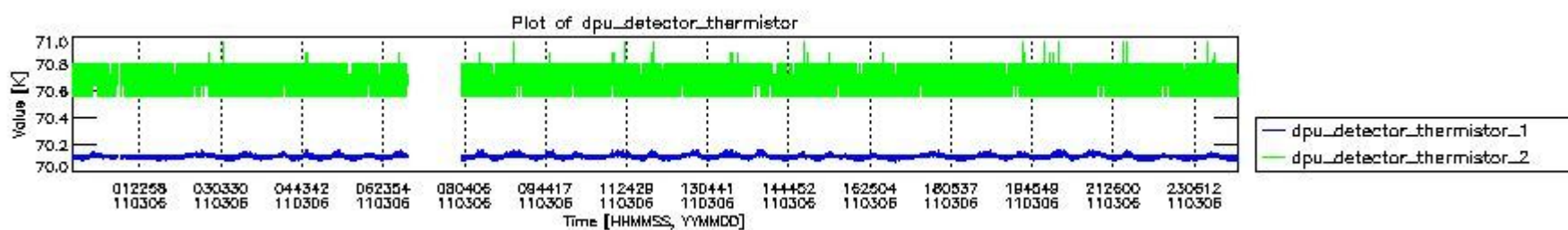
mipas_daily_report_level0_KSPT_L0_4504_N_20110306_0.PNG



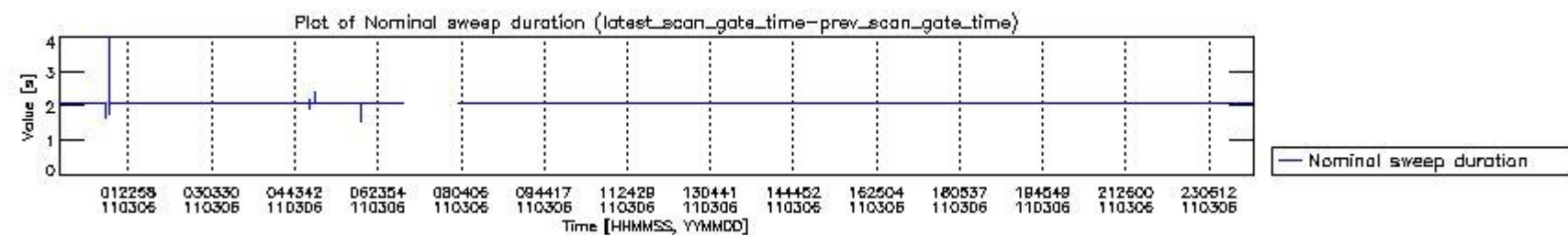
mipas_daily_report_level0_KSPT_L0_4504_N_20110306_1.PNG



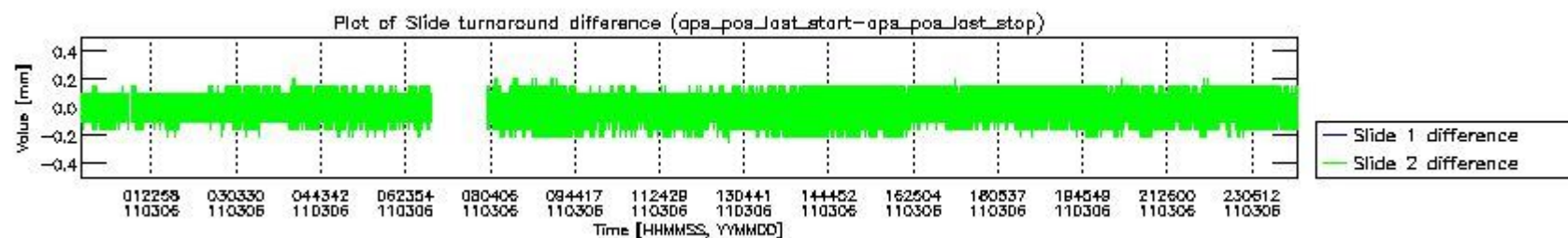
mipas_daily_report_level0_KSPT_L0_4504_N_20110306_2.PNG



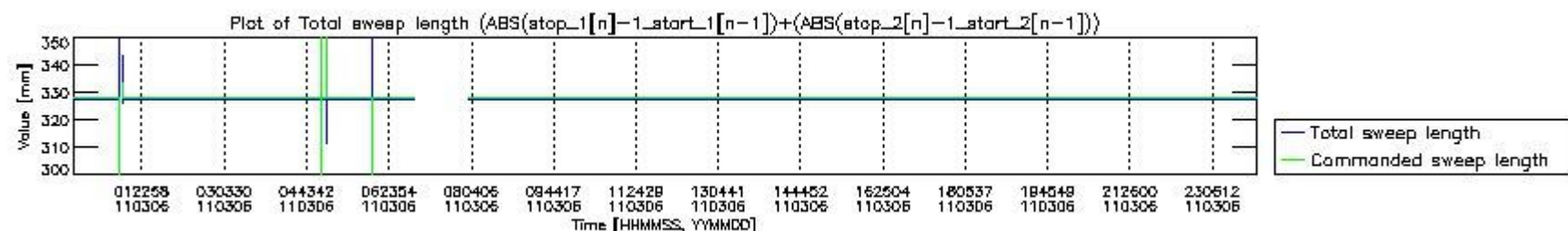
mipas_daily_report_level0_KSPT_L0_4504_N_20110306_3.PNG



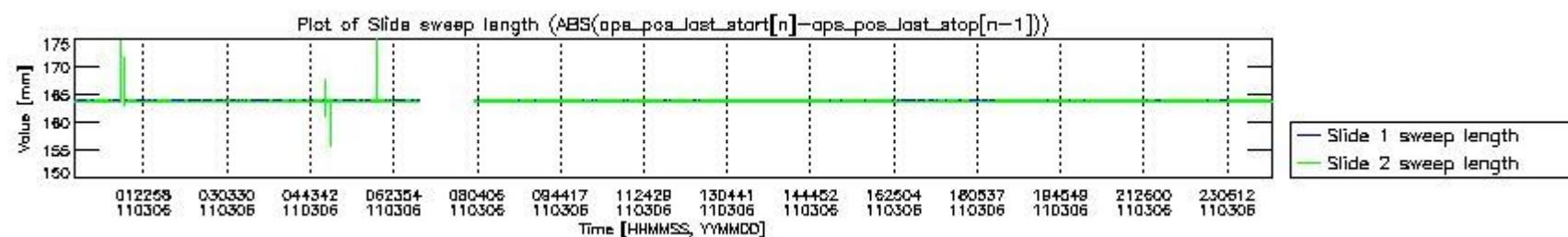
mipas_daily_report_level0_KSPT_L0_4504_N_20110306_4.PNG



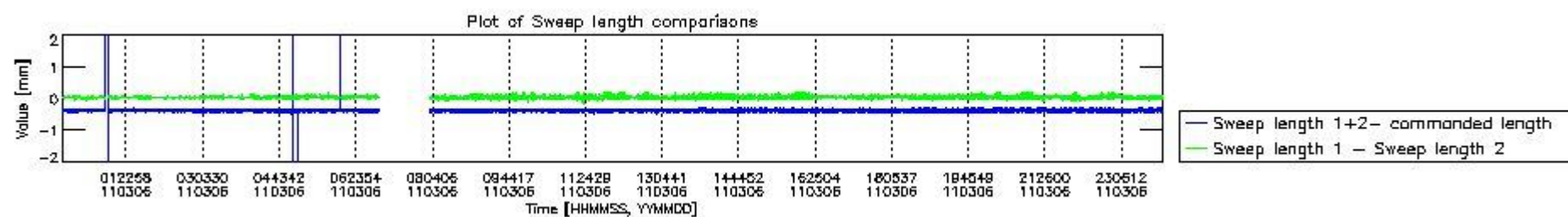
mipas_daily_report_level0_KSPT_L0_4504_N_20110306_5.PNG



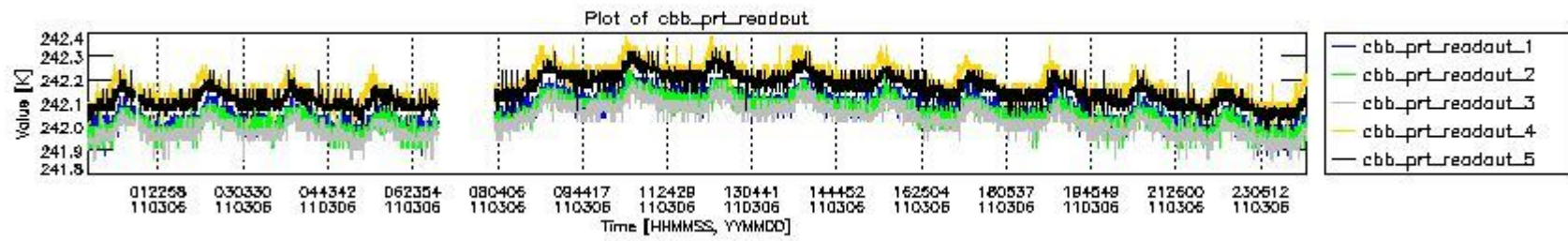
mipas_daily_report_level0_KSPT_L0_4504_N_20110306_6.PNG



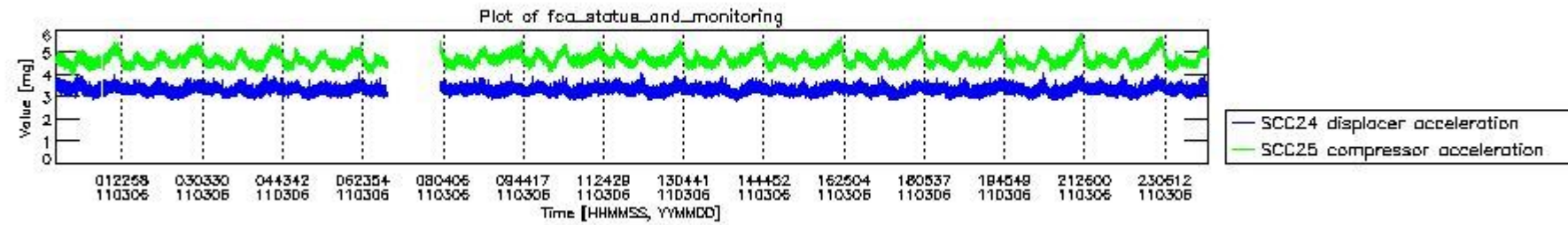
mipas_daily_report_level0_KSPT_L0_4504_N_20110306_7.PNG



mipas_daily_report_level0_KSPT_L0_4504_N_20110306_8.PNG



mipas_daily_report_level0_KSPT_L0_4504_N_20110306_9.PNG

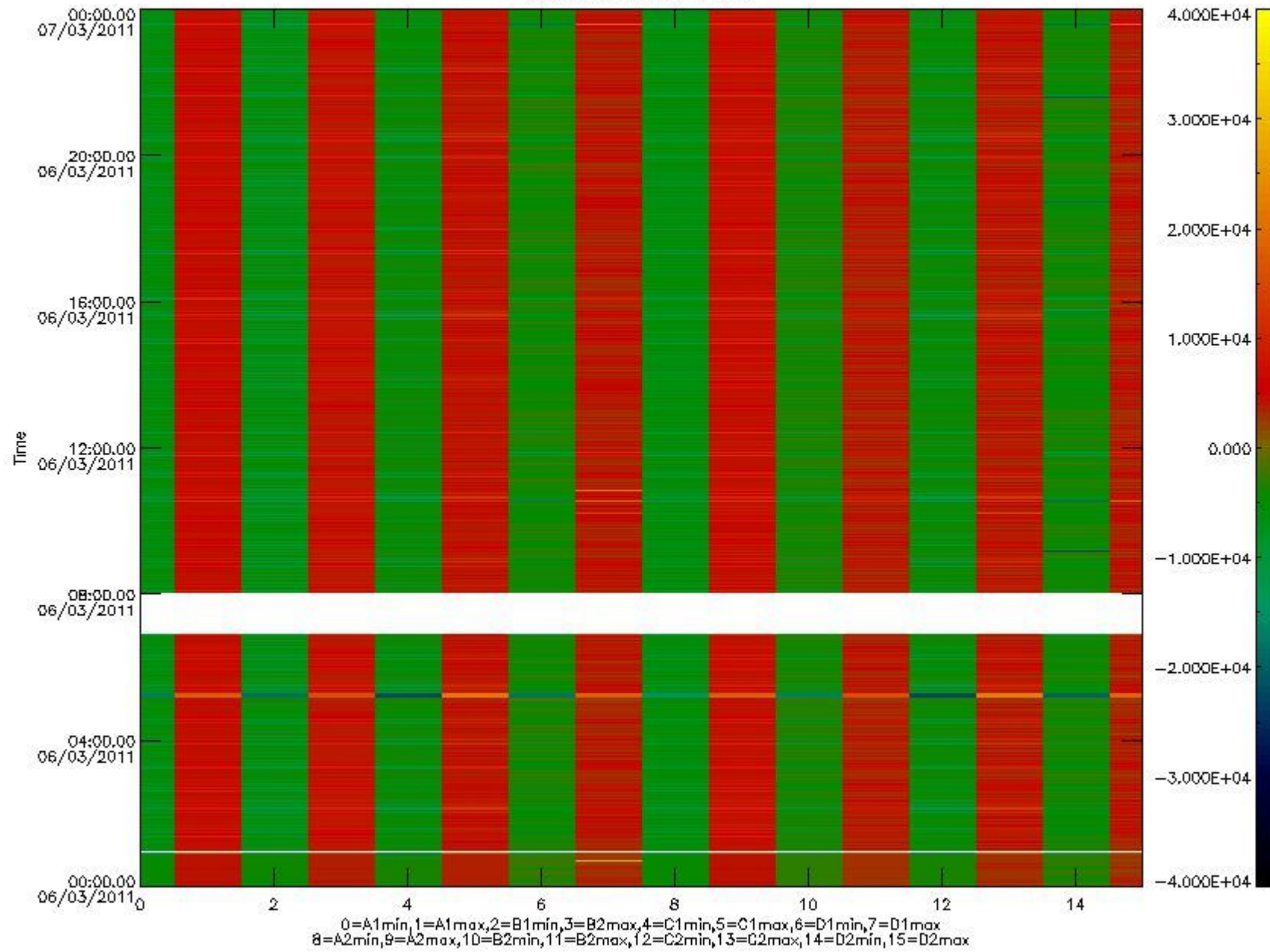


mipas_daily_report_level0_KSPT_L0_4504_N_20110306_10.PNG

The following table shows channel statistics for all channels for this day.

Channel	Min	Max	ADC
A1	-17507	18504	16bit
B1	-19071	16575	16bit
C1	-24410	22308	16bit
D1	-20852	32767	16bit
A2	-15214	18663	16bit
B2	-17194	16909	16bit
C2	-23331	24654	16bit
D2	-32768	26218	16bit

MIPNLOP_MIPSOUPAC_aux_fields_igm_cal, channel statistics plot
Colour indicates value.



mipas_daily_report_level0_KSPT_L0_4504_N_20110306_11.PNG

0.3 ADF monitoring

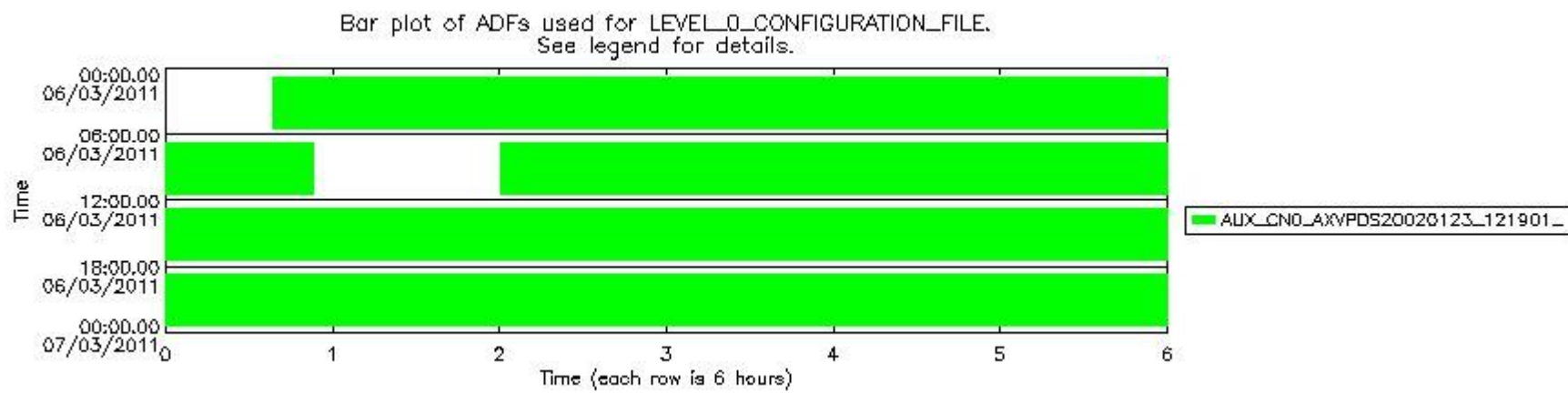
The use of ADFs is shown in two ways:

1. By means of two tables that can be used to find the ADF used for a specific product.
2. By means of plots that show changes in ADF using colours.

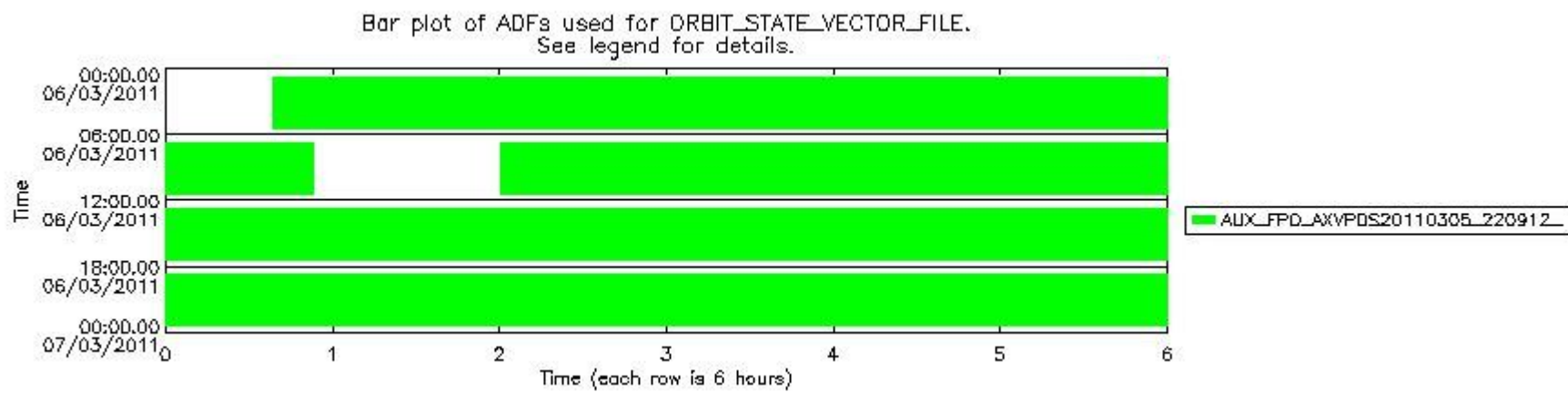
Number	ADF
0	AUX_CN0_AXVPDS20020123_121901_20020101_000000_20200101_000000
1	AUX_FPO_AXVPDS20110305_220912_20110305_195026_20110315_202402

Number	Product name	#CN0	#FPO
0	MIP_NL_0PNPDE20110306_003855_000058153100_00131_47128_3048.N1	0	1

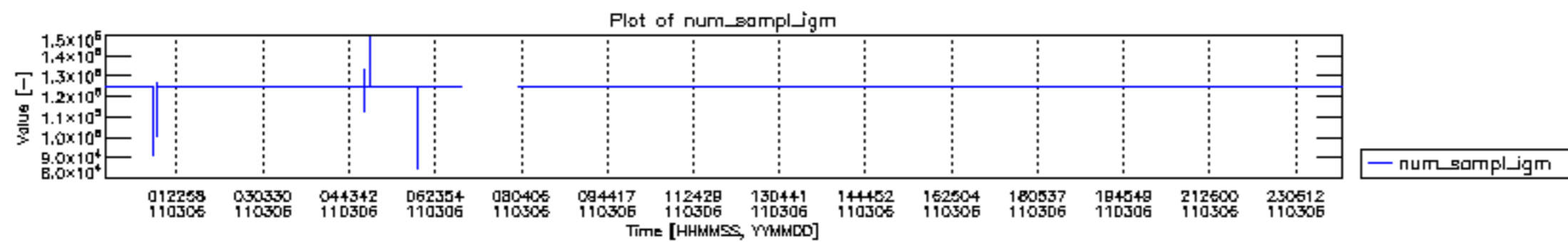
1	MIP_NL__0PNPDE20110306_005852_000046193100_00132_47129_6667.N1	0	1
2	MIP_NL__0PNPDE20110306_021444_000046193100_00132_47129_3049.N1	0	1
3	MIP_NL__0PNPDE20110306_033109_000060943100_00133_47130_3050.N1	0	1
4	MIP_NL__0PNPDE20110306_051210_000060703100_00134_47131_3051.N1	0	1
5	MIP_NL__0PNPDE20110306_060431_000029293100_00135_47132_3052.N1	0	1
6	MIP_NL__0PNPDK20110306_080025_000060563100_00136_47133_4485.N1	0	1
7	MIP_NL__0PNPDK20110306_094014_000060963100_00137_47134_4486.N1	0	1
8	MIP_NL__0PNPDK20110306_112115_000059583100_00138_47135_4487.N1	0	1
9	MIP_NL__0PNPDK20110306_125936_000059273100_00139_47136_4488.N1	0	1
10	MIP_NL__0PNPDK20110306_143724_000058563100_00140_47137_4489.N1	0	1
11	MIP_NL__0PNPDK20110306_161401_000059473100_00141_47138_4490.N1	0	1
12	MIP_NL__0PNPDK20110306_175210_000058793100_00142_47139_4491.N1	0	1
13	MIP_NL__0PNPDK20110306_192914_000061423100_00143_47140_4492.N1	0	1
14	MIP_NL__0PNPDE20110306_211052_000042473100_00144_47141_3053.N1	0	1
15	MIP_NL__0PNPDE20110306_222032_000061753100_00144_47141_3054.N1	0	1

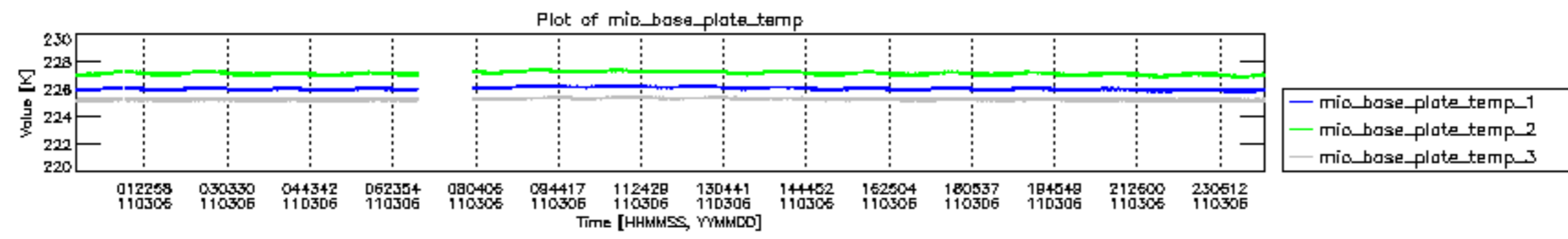


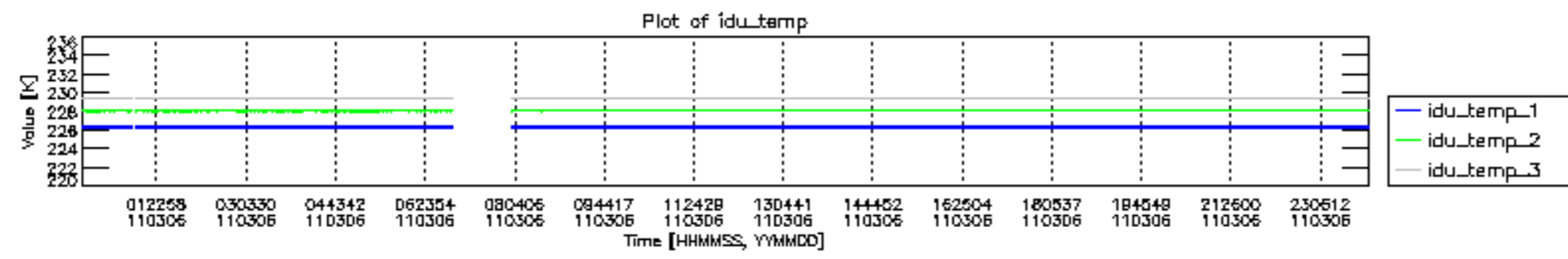
mipas_daily_report_level0_KSPT_L0_4504_N_20110306_12.PNG

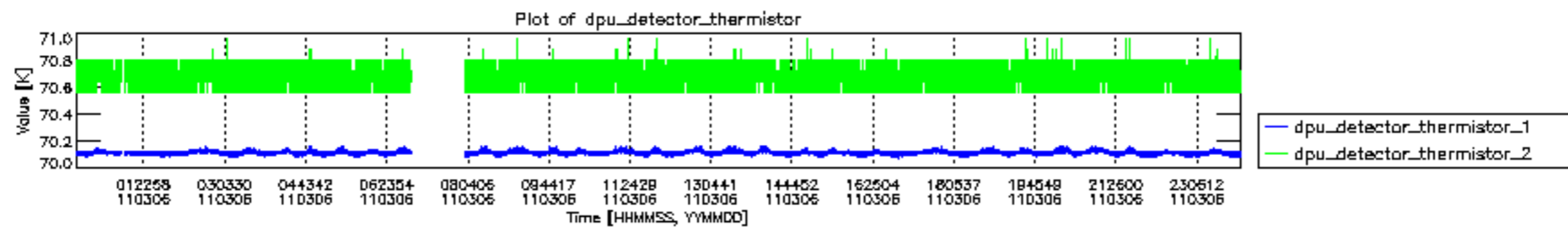


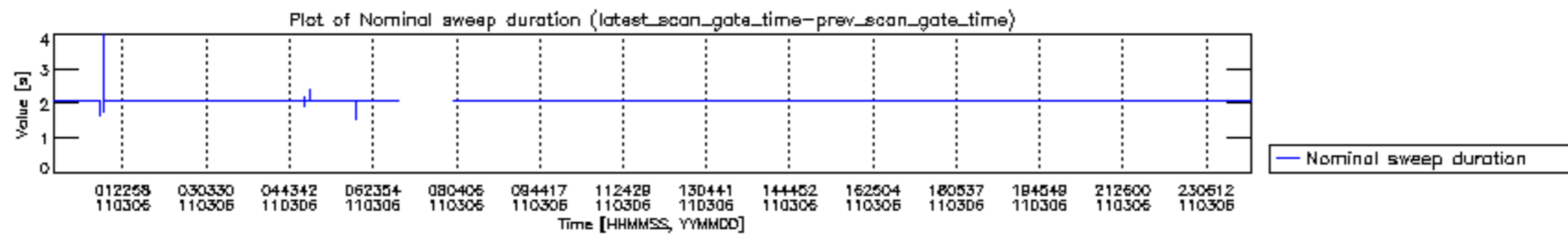
mipas_daily_report_level0_KSPT_L0_4504_N_20110306_13.PNG

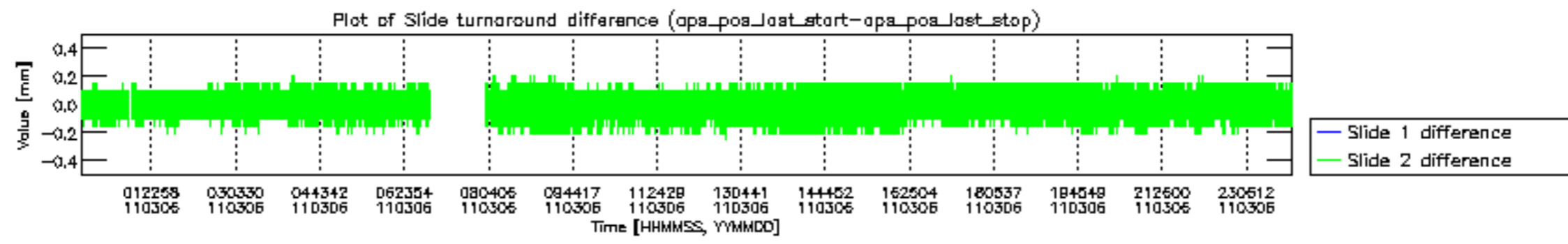


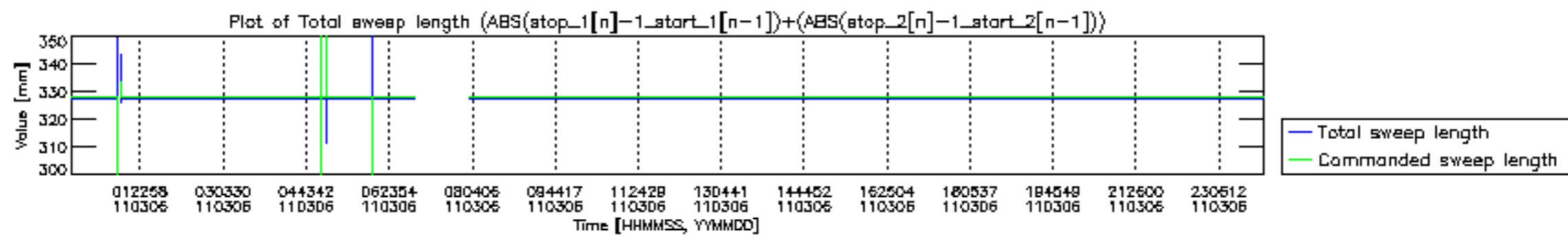


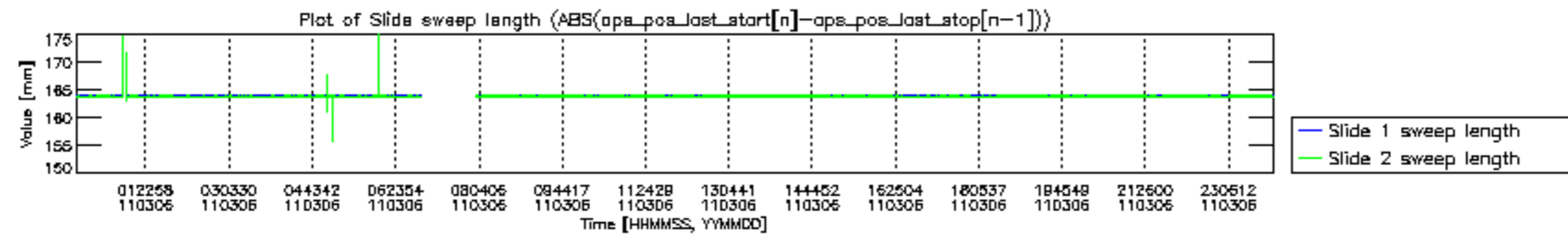


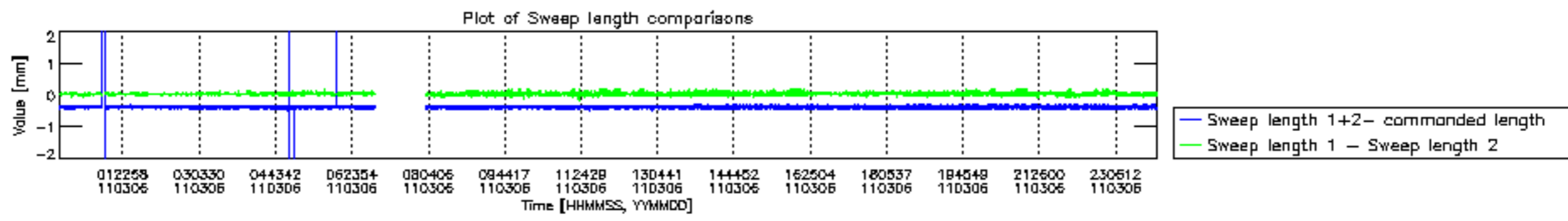


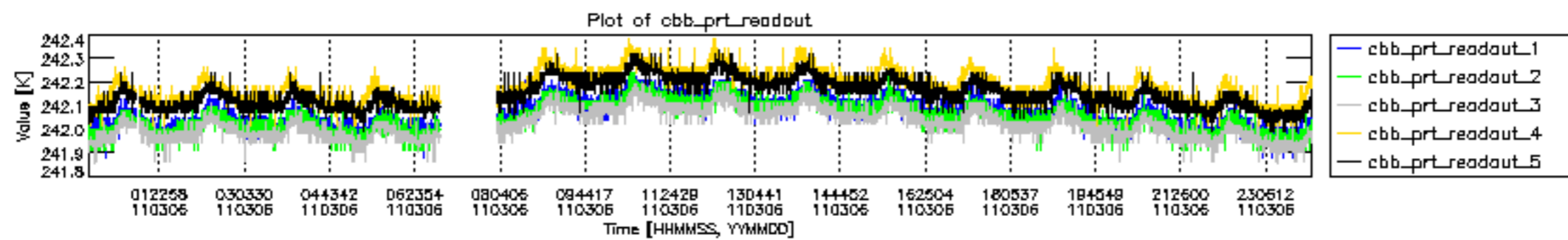


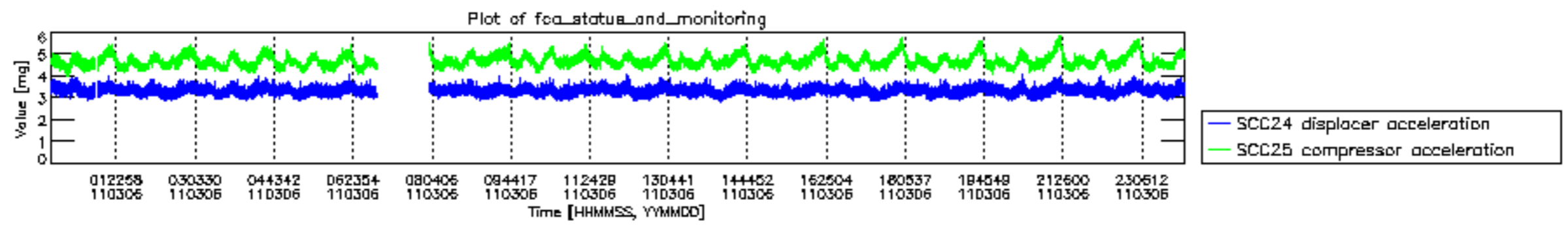












MIPNLOP_MIPSOUPAC_aux_fields_igm_cal, channel statistics plot
 Colour indicates value.

