

0. MIPAS Daily Report for level 0 products

[0.1 General Info](#)

[0.2 Instrument Operational Performance Parameters](#)

[0.3 ADF monitoring](#)

0.1 General Info

This report contains a daily analysis on parameters extracted from MIPAS level 0 data (The MIP_NL__0P product).

0.1.1 Report summary

The table below shows general characteristics of the data that are included into this report.

Item	Value
Report version	v1.6 08-11-2010
Time of report generation	24FEB2011 05:23:05
Data source version	KSPT_L0/4504-N
Processing scope for products	19FEB2011 00:00:00 to 20FEB2011 00:00:00
Start time of first product within scope	19FEB2011 01:27:32
Stop time of last product within scope	20FEB2011 00:53:51
Total number of level 0 products	15
Number of level 0 products with errors	0

0.1.2 Product Quality Indicators per product

The following table shows a summary for each product used in this report.

#	Product name	Start time	Stop time	Prod err	ISP err sign	ISP miss sign	ISP disc sign	rs sign
0	MIP_NL__0PNPDE20110219_012732_000044213099_00347_46913_2950.N1	19FEB2011 01:27:32	19FEB2011 02:41:13	0	0	0	0	0
1	MIP_NL__0PNPDE20110219_024040_000061313099_00348_46914_2951.N1	19FEB2011 02:40:40	19FEB2011 04:22:51	0	0	0	0	0
2	MIP_NL__0PNPDE20110219_042217_000060033099_00349_46915_2952.N1	19FEB2011 04:22:17	19FEB2011 06:02:20	0	0	0	0	0
3	MIP_NL__0PNPDK20110219_060146_000041663099_00350_46916_4341.N1	19FEB2011 06:01:46	19FEB2011 07:11:13	0	0	0	0	0
4	MIP_NL__0PNPDK20110219_071016_000060543099_00351_46917_4342.N1	19FEB2011 07:10:16	19FEB2011 08:51:10	0	0	0	0	0
5	MIP_NL__0PNPDK20110219_085014_000059123099_00352_46918_4343.N1	19FEB2011 08:50:14	19FEB2011 10:28:46	0	0	0	0	0
6	MIP_NL__0PNPDK20110219_102731_000061603099_00353_46919_4344.N1	19FEB2011 10:27:31	19FEB2011 12:10:11	0	0	0	0	0
7	MIP_NL__0PNPDK20110219_120835_000059223099_00354_46920_4345.N1	19FEB2011 12:08:35	19FEB2011 13:47:17	0	0	0	0	0
8	MIP_NL__0PNPDK20110219_134537_000059833099_00355_46921_4346.N1	19FEB2011 13:45:37	19FEB2011 15:25:20	0	0	0	0	0
9	MIP_NL__0PNPDK20110219_152338_000060753099_00356_46922_4347.N1	19FEB2011 15:23:38	19FEB2011 17:04:52	0	0	0	0	0
10	MIP_NL__0PNPDK20110219_170352_000058453099_00357_46923_4348.N1	19FEB2011 17:03:52	19FEB2011 18:41:17	0	0	0	0	0
11	MIP_NL__0PNPDK20110219_184035_000059603099_00358_46924_4349.N1	19FEB2011 18:40:35	19FEB2011 20:19:55	0	0	0	0	0
12	MIP_NL__0PNPDE20110219_201817_000043203099_00359_46925_2953.N1	19FEB2011 20:18:17	19FEB2011 21:30:17	0	0	0	0	0
13	MIP_NL__0PNPDE20110219_212910_000062383099_00359_46925_2954.N1	19FEB2011 21:29:10	19FEB2011 23:13:08	0	0	0	0	0
14	MIP_NL__0PNPDE20110219_231203_000061083099_00360_46926_2955.N1	19FEB2011 23:12:03	20FEB2011 00:53:51	0	0	0	0	0

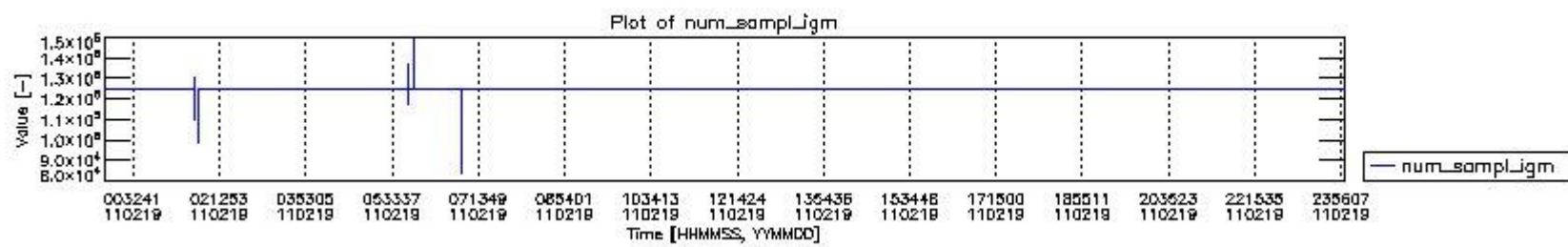
0.2 Instrument Operational Performance Parameters

The following plots give an overview of various instrument parameters for this day. The instrument parameters are part of the auxiliary data field within the source packets of the MIP_NL__0P product. The auxiliary data is normally included twice per interferogram. Note that only the first packet is currently included in monitoring.

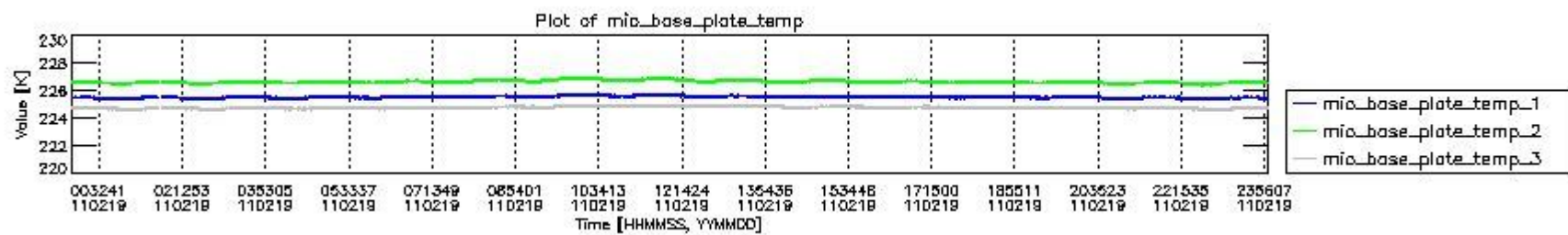
The following table shows the counts of various interferogram number of samples

Number of igm samples	Count [#]	Count [%]
83784	1	0.0024091161
94226	1	0.0024091161
98773	1	0.0024091161

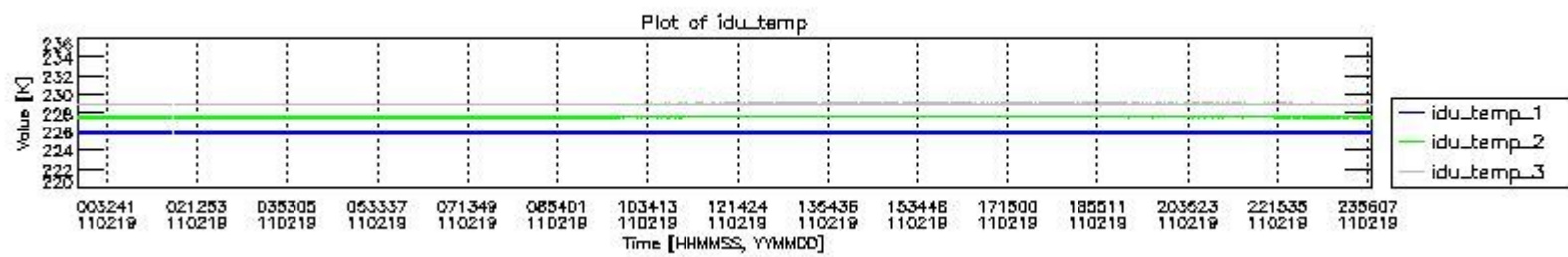
110060	1	0.0024091161
114358	1	0.0024091161
115452	1	0.0024091161
117049	1	0.0024091161
123250	1	0.0024091161
124025	1	0.0024091161
124800	38560	92.895517
124803	2934	7.0683466
127233	1	0.0024091161
129430	1	0.0024091161
130192	1	0.0024091161
137181	1	0.0024091161
147365	1	0.0024091161
149798	1	0.0024091161



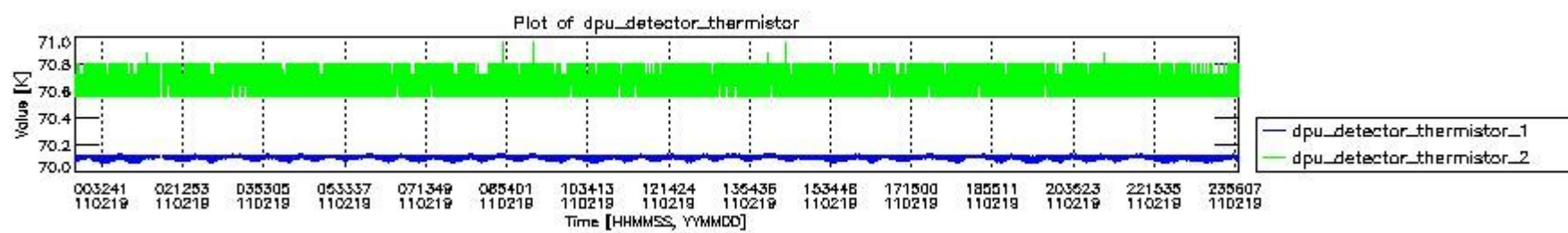
mipas_daily_report_level0_KSPT_L0_4504_N_20110219_0.PNG



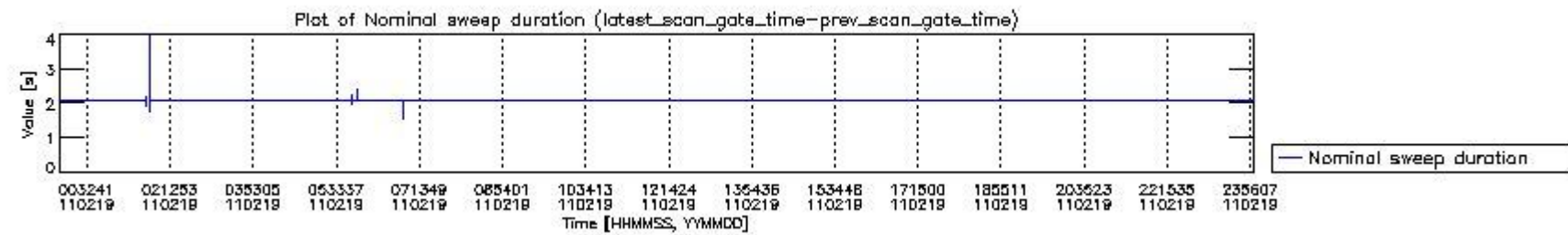
mipas_daily_report_level0_KSPT_L0_4504_N_20110219_1.PNG



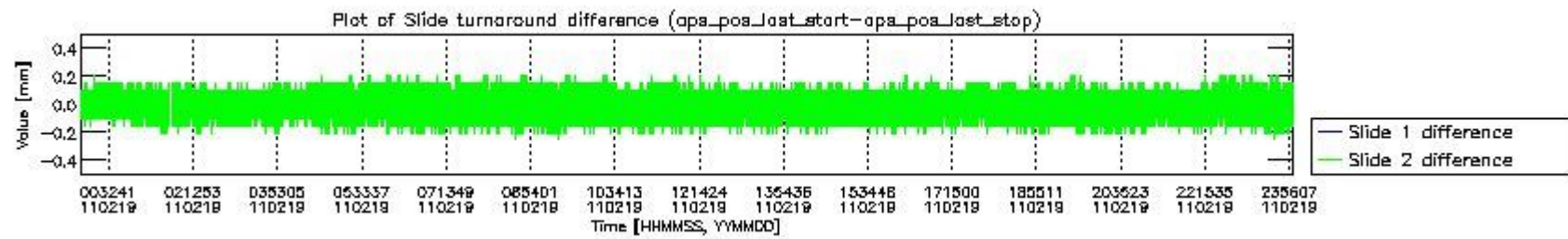
mipas_daily_report_level0_KSPT_L0_4504_N_20110219_2.PNG



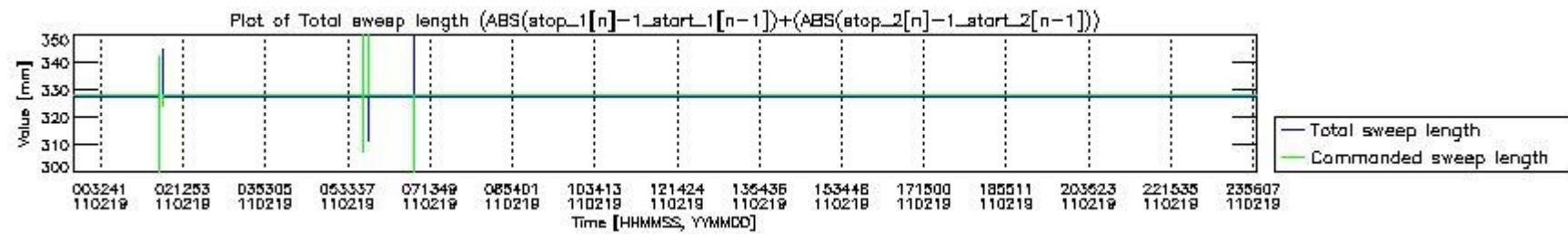
mipas_daily_report_level0_KSPT_L0_4504_N_20110219_3.PNG



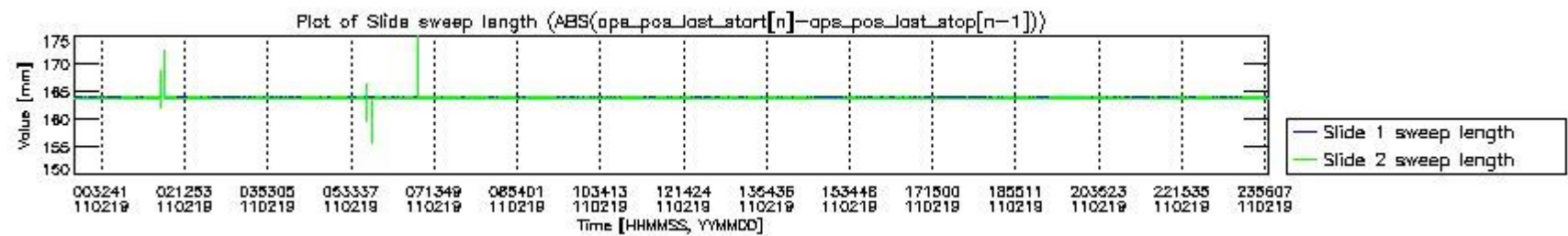
mipas_daily_report_level0_KSPT_L0_4504_N_20110219_4.PNG



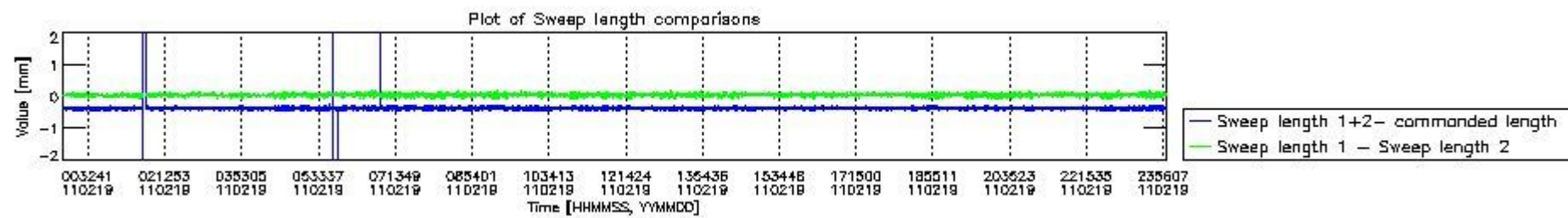
mipas_daily_report_level0_KSPT_L0_4504_N_20110219_5.PNG



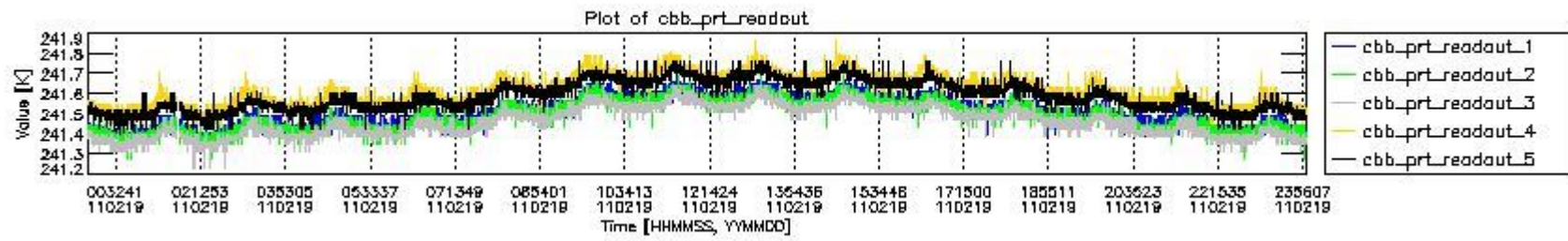
mipas_daily_report_level0_KSPT_L0_4504_N_20110219_6.PNG



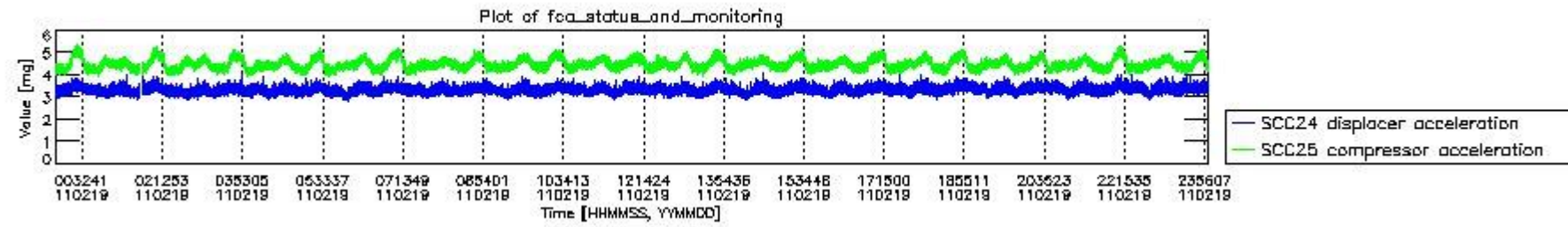
mipas_daily_report_level0_KSPT_L0_4504_N_20110219_7.PNG



mipas_daily_report_level0_KSPT_L0_4504_N_20110219_8.PNG



mipas_daily_report_level0_KSPT_L0_4504_N_20110219_9.PNG

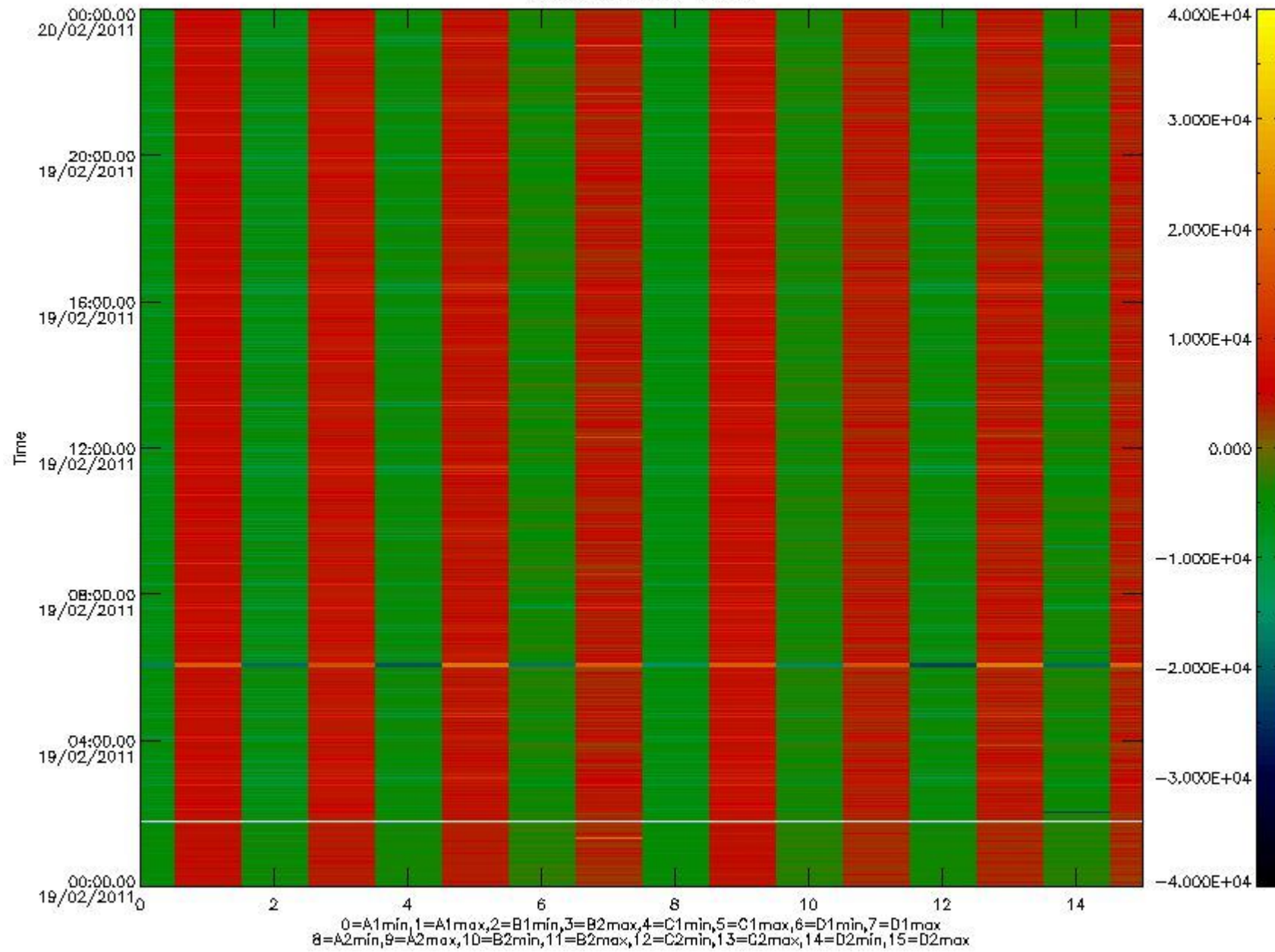


mipas_daily_report_level0_KSPT_L0_4504_N_20110219_10.PNG

The following table shows channel statistics for all channels for this day.

Channel	Min	Max	ADC
A1	-17417	18435	16bit
B1	-18789	16355	16bit
C1	-23647	21751	16bit
D1	-22431	32767	16bit
A2	-15117	18541	16bit
B2	-16796	16528	16bit
C2	-22842	22388	16bit
D2	-32768	28206	16bit

MIPNLOP_MIPSOUPAC_aux_fields_igm_cal, channel statistics plot
Colour indicates value.



mipas_daily_report_level0_KSPT_L0_4504_N_20110219_11.PNG

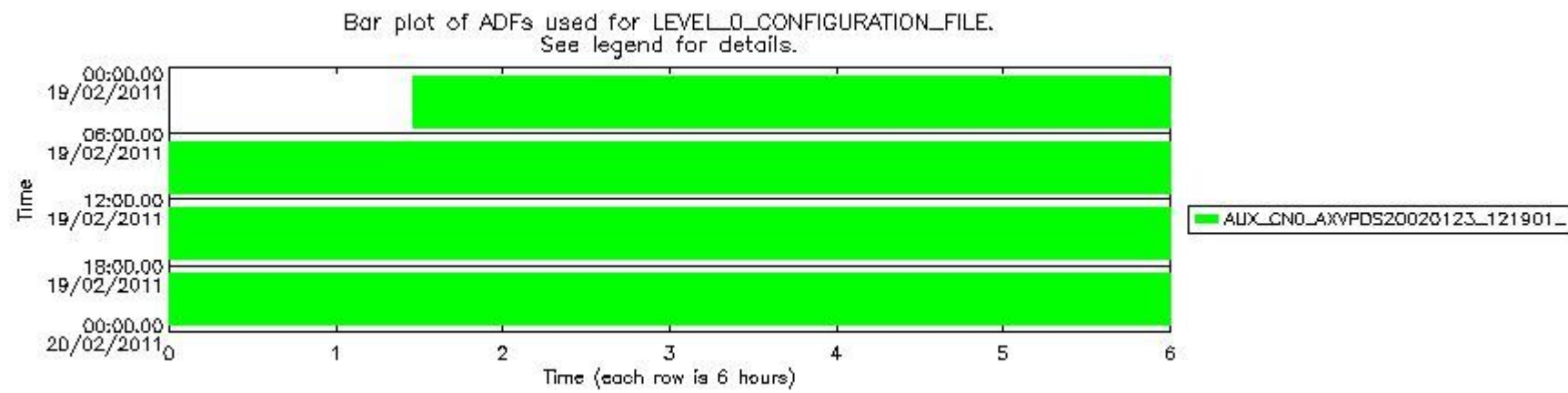
0.3 ADF monitoring

The use of ADFs is shown in two ways:

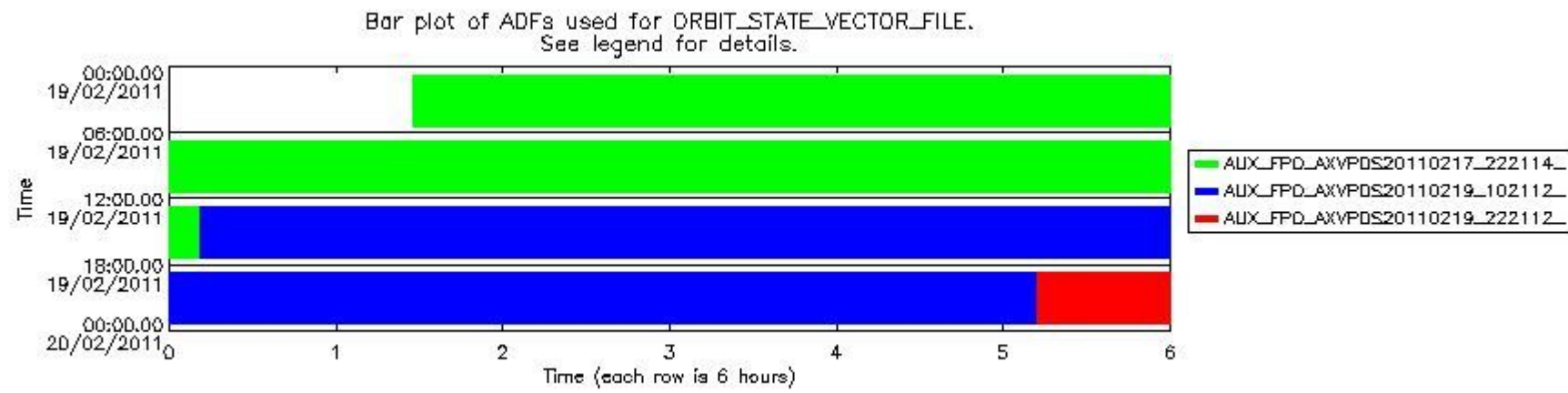
1. By means of two tables that can be used to find the ADF used for a specific product.
2. By means of plots that show changes in ADF using colours.

Number	ADF
0	AUX_CN0_AXVPDS20020123_121901_20020101_000000_20200101_000000
1	AUX_FPO_AXVPDS20110217_222114_20110217_193645_20110227_201022
2	AUX_FPO_AXVPDS20110219_102112_20110218_190001_20110228_211352
3	AUX_FPO_AXVPDS20110219_222112_20110219_182318_20110301_203708

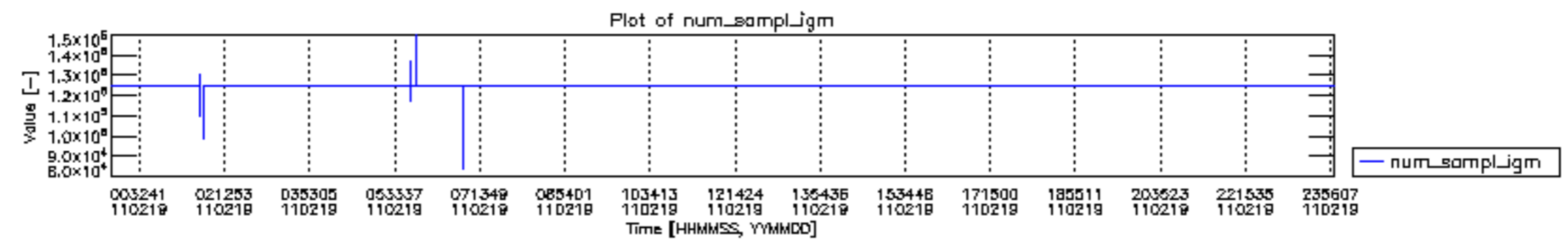
Number	Product name	#CNO	#FPO
0	MIP_NL__0PNPDE20110219_012732_000044213099_00347_46913_2950.N1	0	1
1	MIP_NL__0PNPDE20110219_024040_000061313099_00348_46914_2951.N1	0	1
2	MIP_NL__0PNPDE20110219_042217_000060033099_00349_46915_2952.N1	0	1
3	MIP_NL__0PNPDK20110219_060146_000041663099_00350_46916_4341.N1	0	1
4	MIP_NL__0PNPDK20110219_071016_000060543099_00351_46917_4342.N1	0	1
5	MIP_NL__0PNPDK20110219_085014_000059123099_00352_46918_4343.N1	0	1
6	MIP_NL__0PNPDK20110219_102731_000061603099_00353_46919_4344.N1	0	1
7	MIP_NL__0PNPDK20110219_120835_000059223099_00354_46920_4345.N1	0	2
8	MIP_NL__0PNPDK20110219_134537_000059833099_00355_46921_4346.N1	0	2
9	MIP_NL__0PNPDK20110219_152338_000060753099_00356_46922_4347.N1	0	2
10	MIP_NL__0PNPDK20110219_170352_000058453099_00357_46923_4348.N1	0	2
11	MIP_NL__0PNPDK20110219_184035_000059603099_00358_46924_4349.N1	0	2
12	MIP_NL__0PNPDE20110219_201817_000043203099_00359_46925_2953.N1	0	2
13	MIP_NL__0PNPDE20110219_212910_000062383099_00359_46925_2954.N1	0	2
14	MIP_NL__0PNPDE20110219_231203_000061083099_00360_46926_2955.N1	0	3

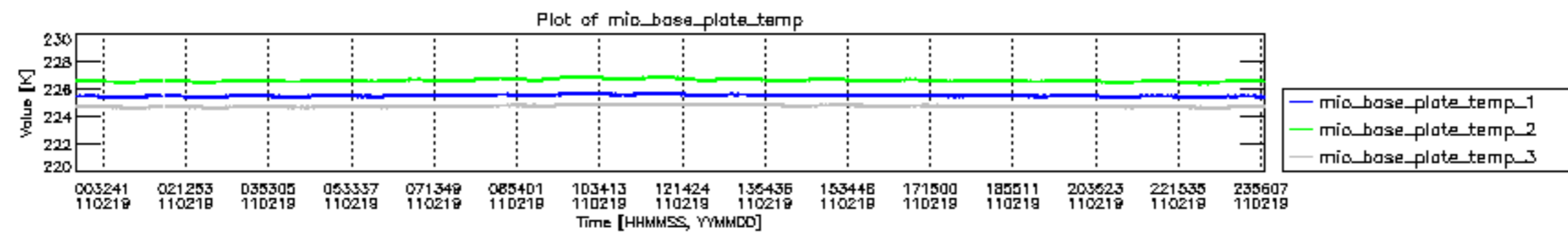


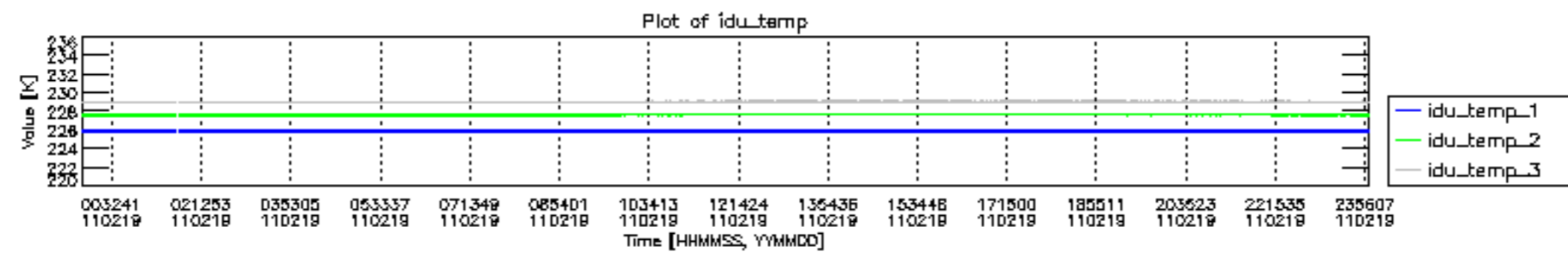
mipas_daily_report_level0_KSPT_L0_4504_N_20110219_12.PNG

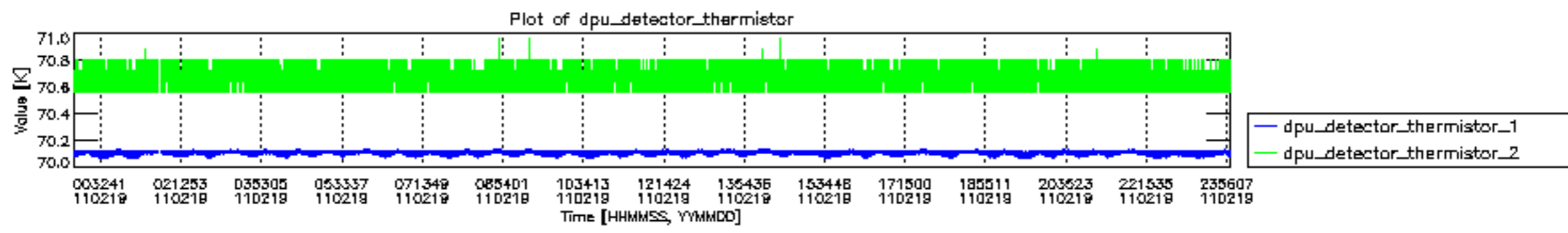


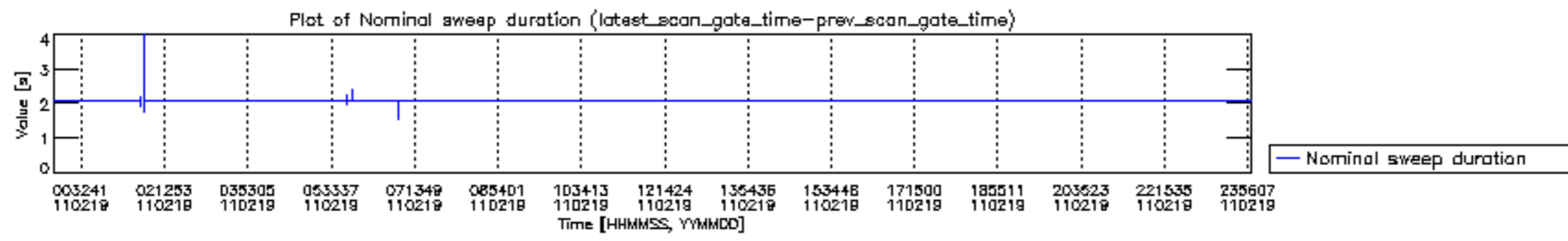
mipas_daily_report_level0_KSPT_L0_4504_N_20110219_13.PNG

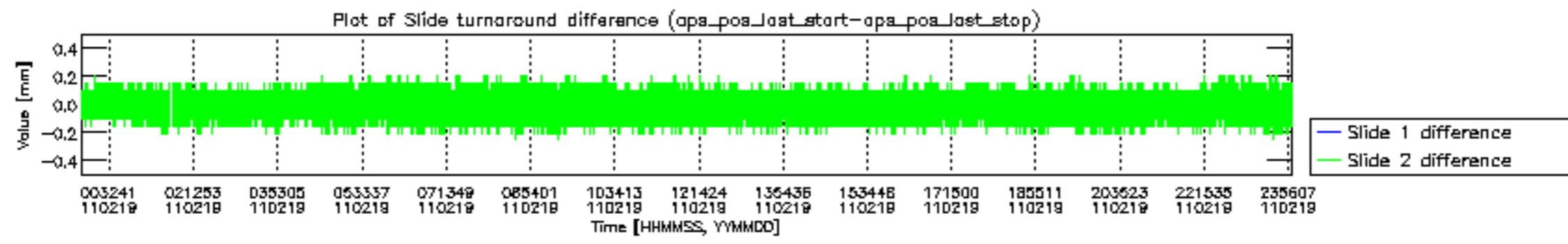


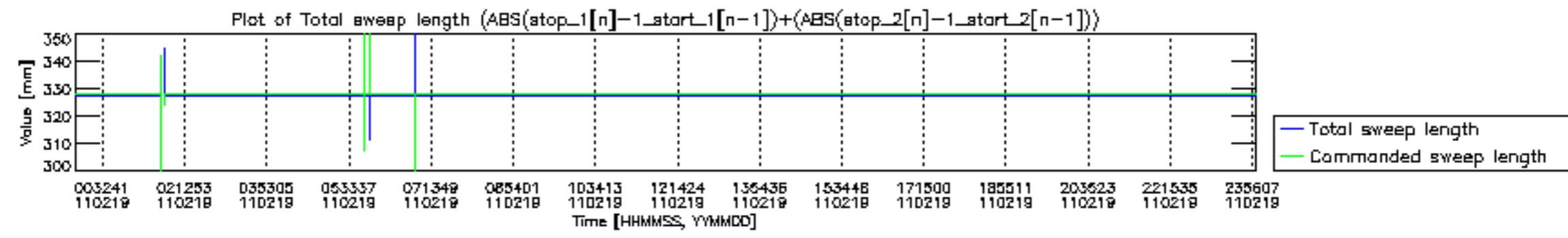


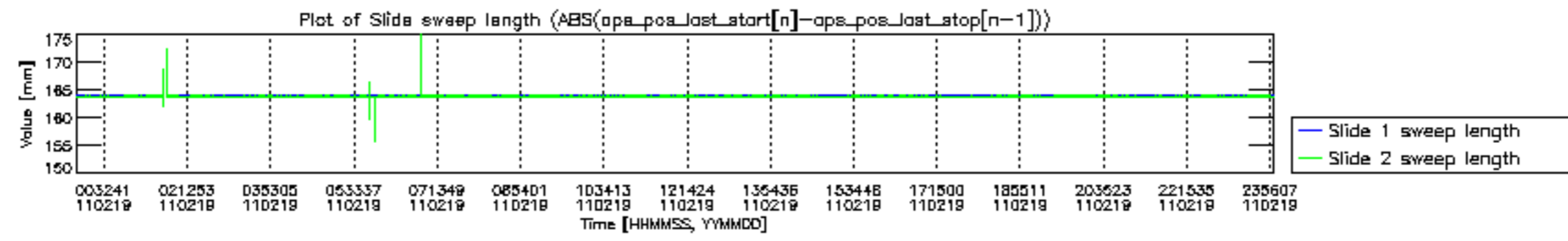


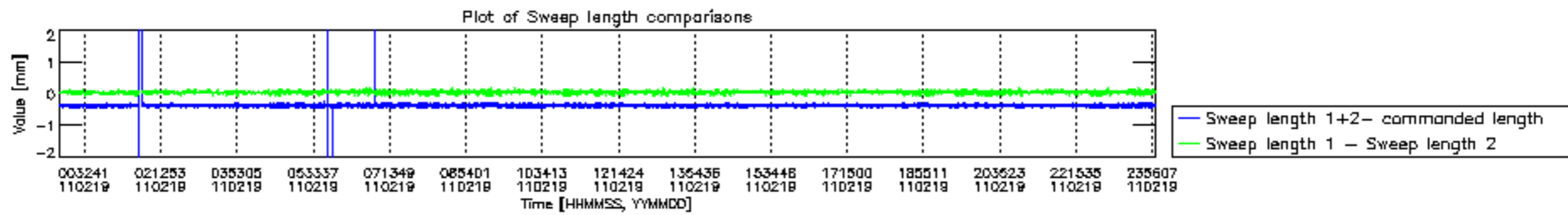


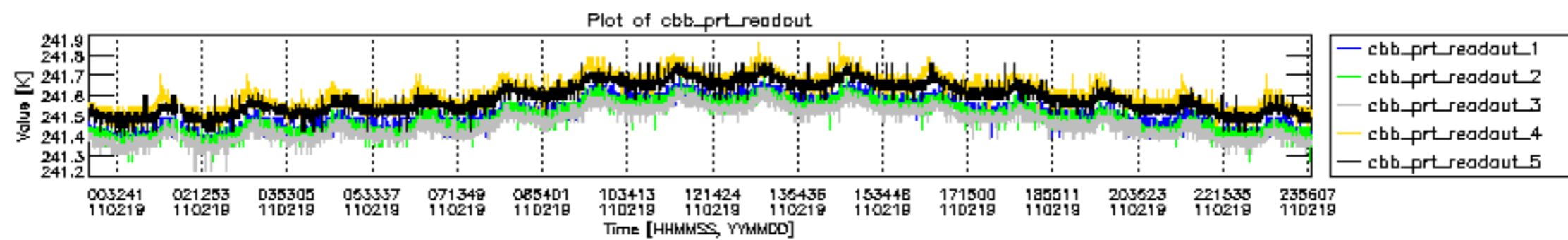


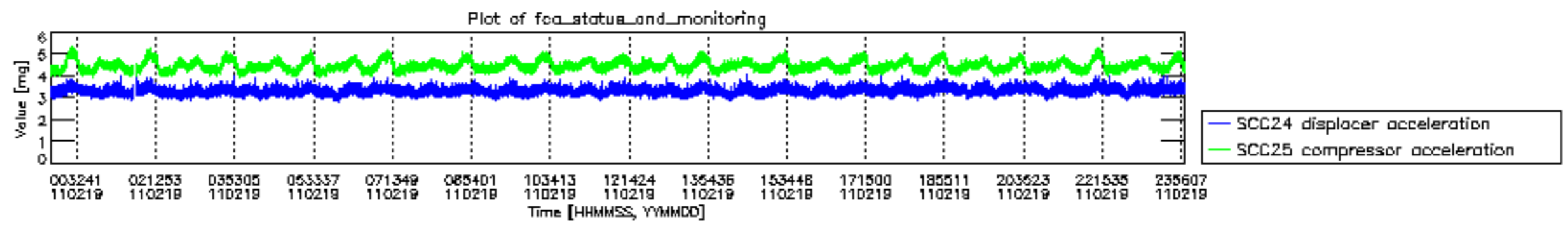












MIPNLOP_MIPSOUPAC_aux_fields_igm_cal, channel statistics plot
 Colour indicates value.

