

## 0. MIPAS Daily Report for level 0 products

### [0.1 General Info](#)

### [0.2 Instrument Operational Performance Parameters](#)

### [0.3 ADF monitoring](#)

## 0.1 General Info

This report contains a daily analysis on parameters extracted from MIPAS level 0 data (The MIP\_NL\_\_0P product).

### 0.1.1 Report summary

The table below shows general characteristics of the data that are included into this report.

Item	Value
Report version	v1.6 08-11-2010
Time of report generation	20FEB2011 05:23:40
Data source version	KSPT_L0/4504-N
Processing scope for products	16FEB2011 00:00:00 to 17FEB2011 00:00:00
Start time of first product within scope	16FEB2011 01:36:49
Stop time of last product within scope	17FEB2011 01:03:55
Total number of level 0 products	14
Number of level 0 products with errors	0

### 0.1.2 Product Quality Indicators per product

The following table shows a summary for each product used in this report.

#	Product name	Start time	Stop time	Prod err	ISP err sign	ISP miss sign	ISP disc sign	rs sign
0	MIP_NL__0PNPDE20110216_013649_000044333099_00304_46870_2930.N1	16FEB2011 01:36:49	16FEB2011 02:50:42	0	0	0	0	0
1	MIP_NL__0PNPDE20110216_025011_000061333099_00305_46871_2931.N1	16FEB2011 02:50:11	16FEB2011 04:32:24	0	0	0	0	0
2	MIP_NL__0PNPDE20110216_043150_000060313099_00306_46872_2932.N1	16FEB2011 04:31:50	16FEB2011 06:12:22	0	0	0	0	0
3	MIP_NL__0PNPDK20110216_061148_000040913099_00307_46873_4315.N1	16FEB2011 06:11:48	16FEB2011 07:20:00	0	0	0	0	0
4	MIP_NL__0PNPDK20110216_071901_000060963099_00308_46874_4316.N1	16FEB2011 07:19:01	16FEB2011 09:00:37	0	0	0	0	0
5	MIP_NL__0PNPDK20110216_085940_000060603099_00309_46875_4317.N1	16FEB2011 08:59:40	16FEB2011 10:40:41	0	0	0	0	0
6	MIP_NL__0PNPDK20110216_103905_000059293099_00310_46876_4318.N1	16FEB2011 10:39:05	16FEB2011 12:17:53	0	0	0	0	0
7	MIP_NL__0PNPDK20110216_121655_000060233099_00311_46877_4319.N1	16FEB2011 12:16:55	16FEB2011 13:57:17	0	0	0	0	0
8	MIP_NL__0PNPDK20110216_135619_000059563099_00312_46878_4320.N1	16FEB2011 13:56:19	16FEB2011 15:35:35	0	0	0	0	0
9	MIP_NL__0PNPDK20110216_153436_000059793099_00313_46879_4321.N1	16FEB2011 15:34:36	16FEB2011 17:14:15	0	0	0	0	0
10	MIP_NL__0PNPDK20110216_171316_000059143099_00314_46880_4322.N1	16FEB2011 17:13:16	16FEB2011 18:51:50	0	0	0	0	0
11	MIP_NL__0PNPDK20110216_185115_000059753099_00315_46881_4323.N1	16FEB2011 18:51:15	16FEB2011 20:30:49	0	0	0	0	0
12	MIP_NL__0PNPDE20110216_202909_000043373099_00316_46882_2933.N1	16FEB2011 20:29:09	16FEB2011 21:41:26	0	0	0	0	0
13	MIP_NL__0PNPDE20110216_232329_000060273099_00317_46883_2934.N1	16FEB2011 23:23:29	17FEB2011 01:03:55	0	0	0	0	0

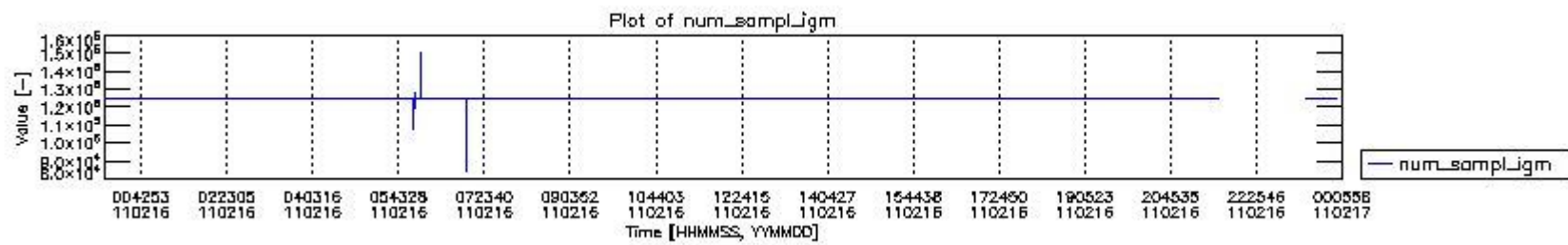
## 0.2 Instrument Operational Performance Parameters

The following plots give an overview of various instrument parameters for this day. The instrument parameters are part of the auxiliary data field within the source packets of the MIP\_NL\_\_0P product. The auxiliary data is normally included twice per interferogram. Note that only the first packet is currently included in monitoring.

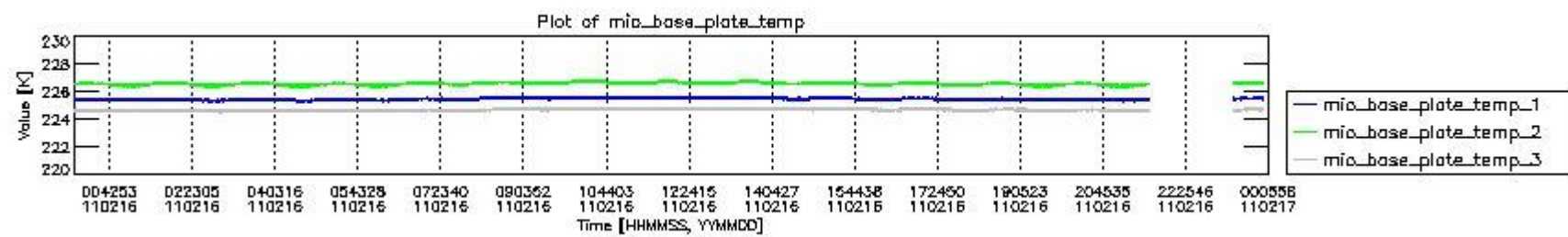
The following table shows the counts of various interferogram number of samples

Number of igm samples	Count [#]	Count [%]
83784	1	0.0025895331
94226	1	0.0025895331
108053	1	0.0025895331
111438	1	0.0025895331

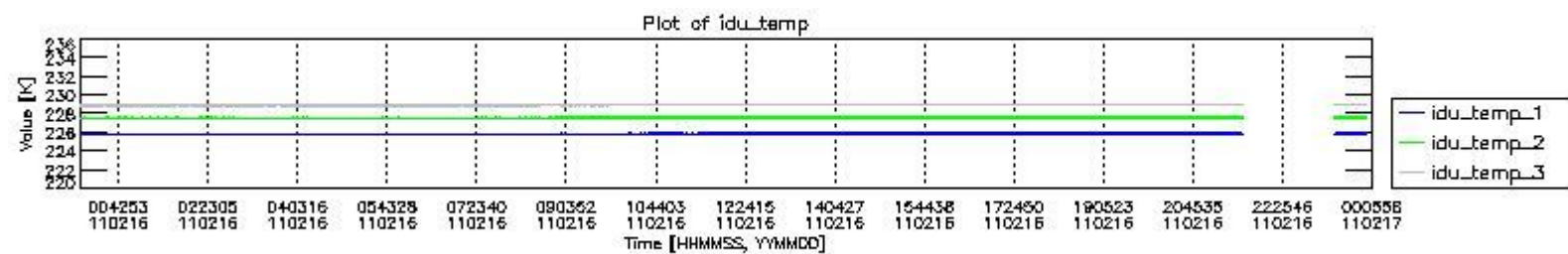
114358	1	0.0025895331
124800	35870	92.886553
124803	2738	7.0901416
127531	1	0.0025895331
128185	1	0.0025895331
147663	1	0.0025895331
150394	1	0.0025895331



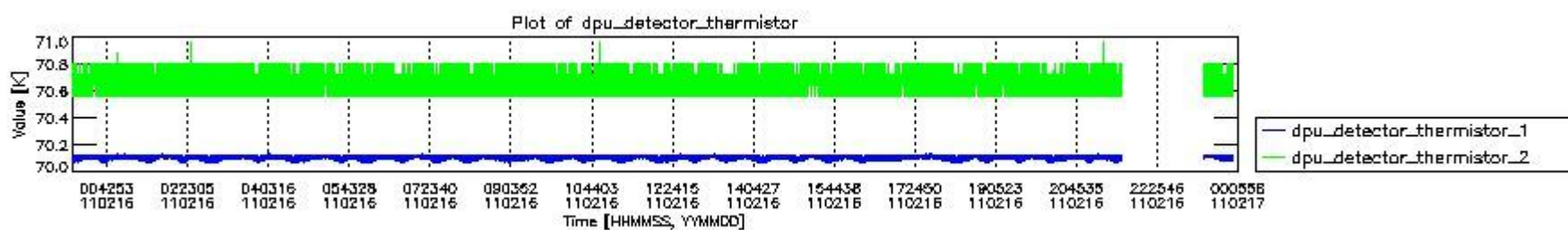
mipas\_daily\_report\_level0\_KSPT\_L0\_4504\_N\_20110216\_0.PNG



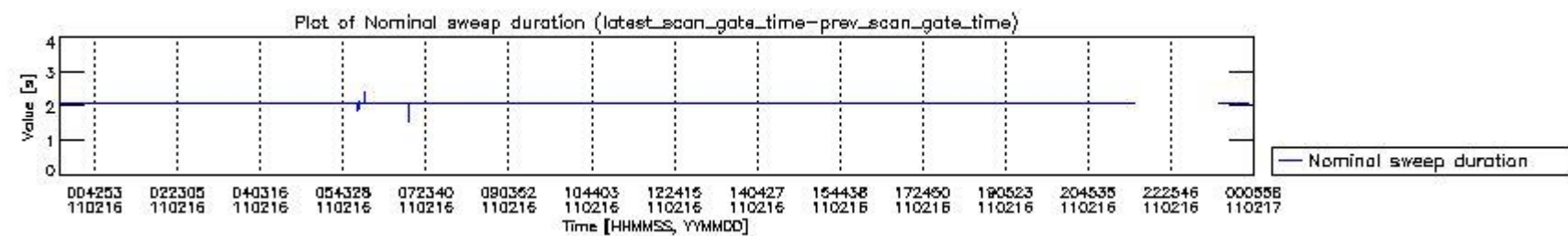
mipas\_daily\_report\_level0\_KSPT\_L0\_4504\_N\_20110216\_1.PNG



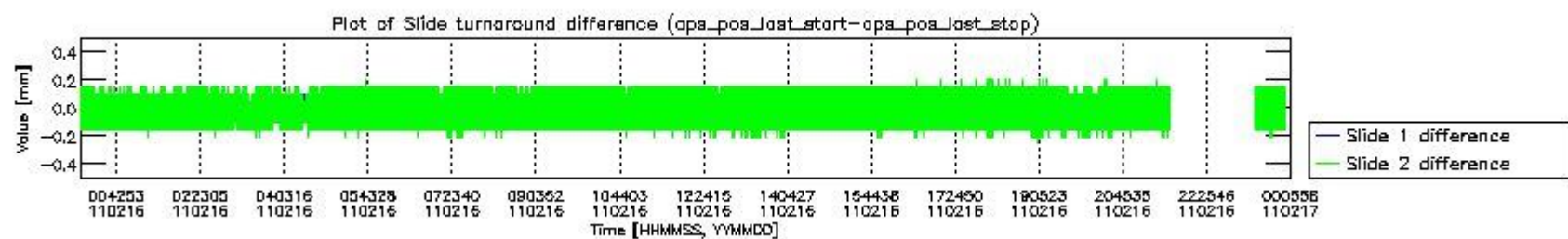
mipas\_daily\_report\_level0\_KSPT\_L0\_4504\_N\_20110216\_2.PNG



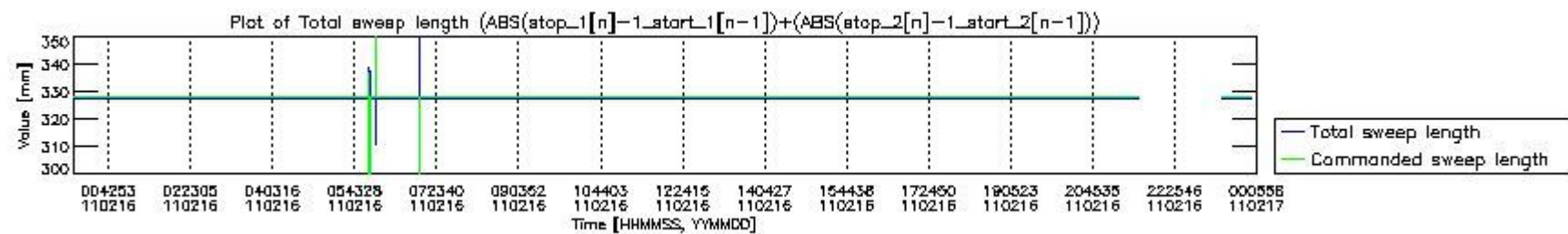
mipas\_daily\_report\_level0\_KSPT\_L0\_4504\_N\_20110216\_3.PNG



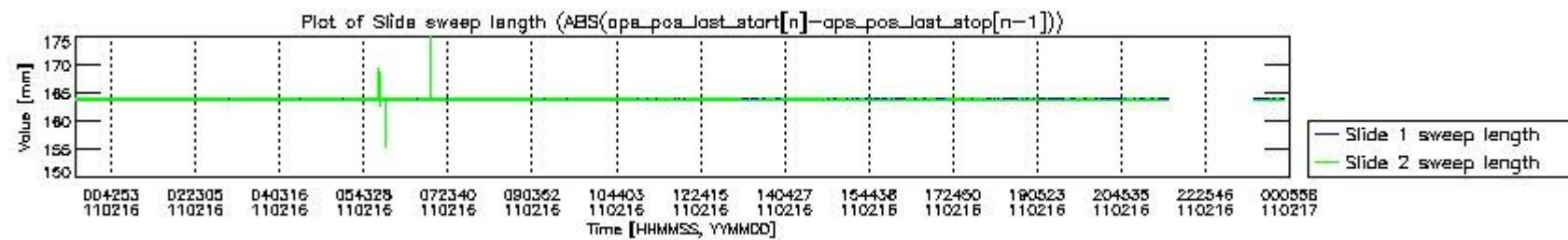
mipas\_daily\_report\_level0\_KSPT\_L0\_4504\_N\_20110216\_4.PNG



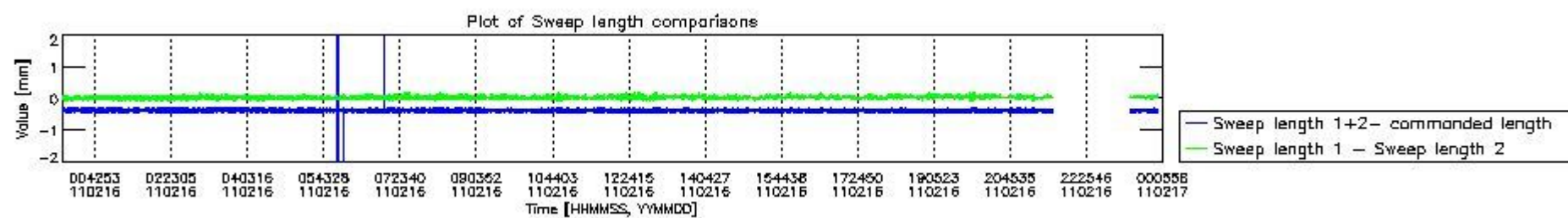
mipas\_daily\_report\_level0\_KSPT\_L0\_4504\_N\_20110216\_5.PNG



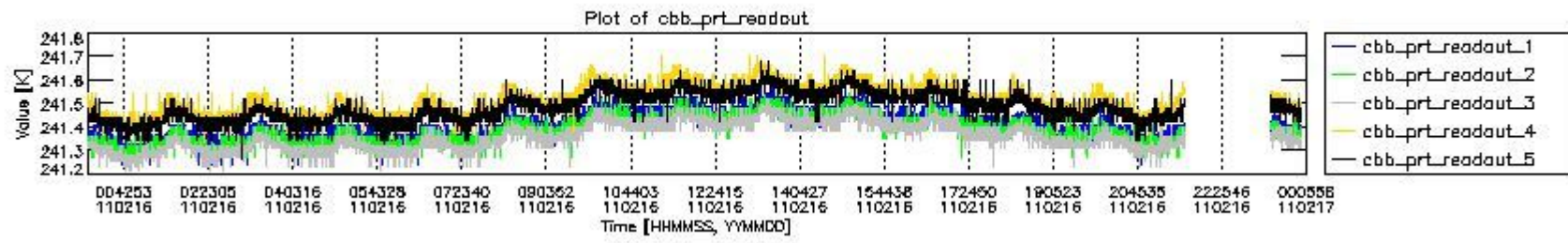
mipas\_daily\_report\_level0\_KSPT\_L0\_4504\_N\_20110216\_6.PNG



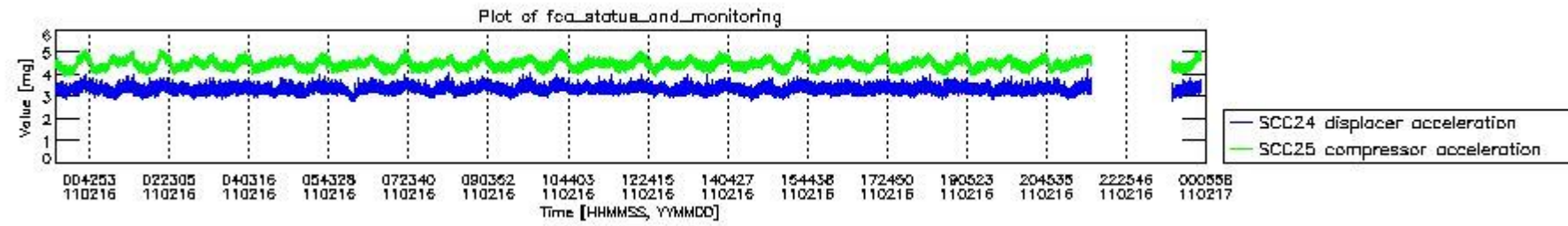
mipas\_daily\_report\_level0\_KSPT\_L0\_4504\_N\_20110216\_7.PNG



mipas\_daily\_report\_level0\_KSPT\_L0\_4504\_N\_20110216\_8.PNG



mipas\_daily\_report\_level0\_KSPT\_L0\_4504\_N\_20110216\_9.PNG

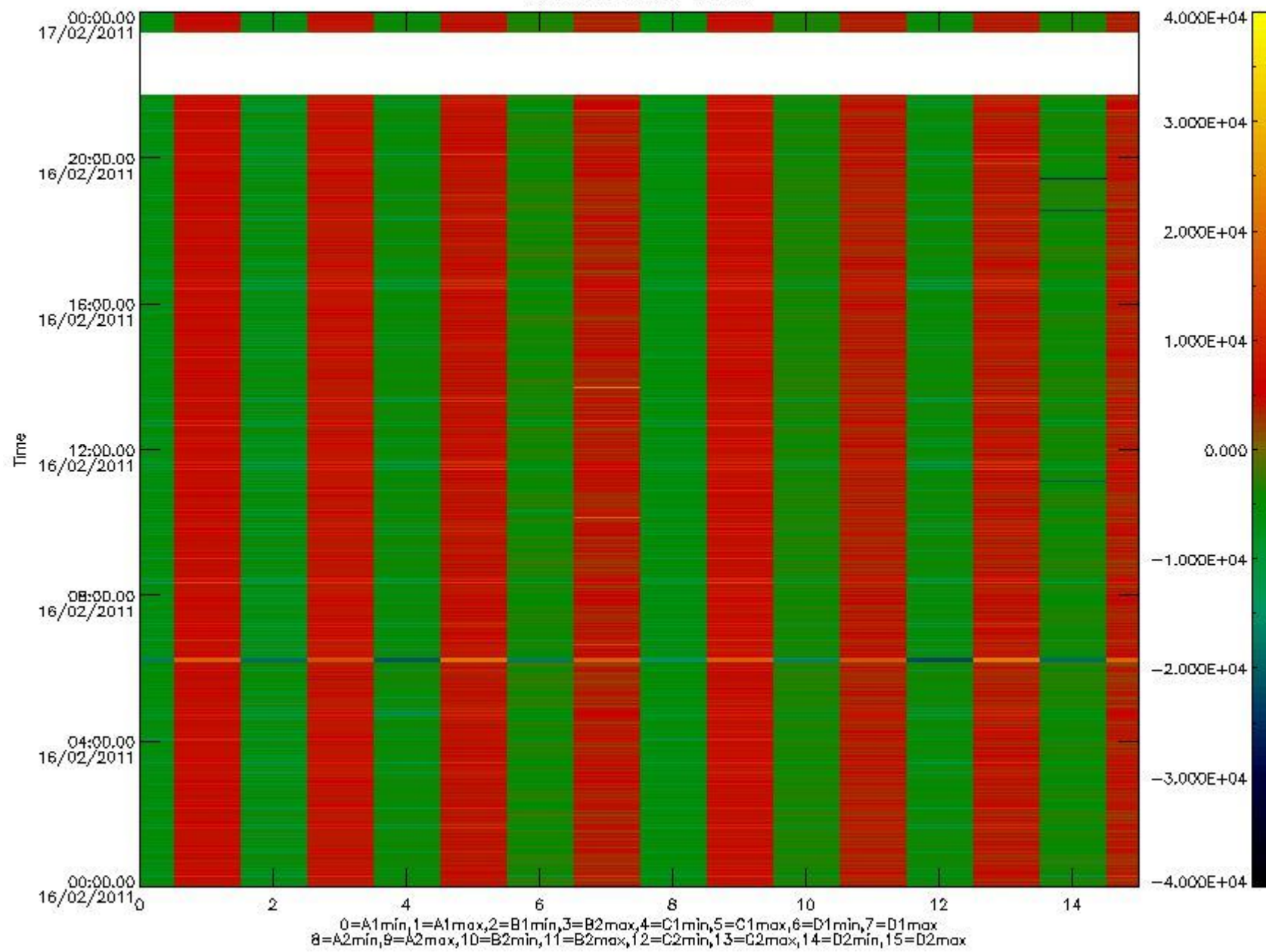


mipas\_daily\_report\_level0\_KSPT\_L0\_4504\_N\_20110216\_10.PNG

The following table shows channel statistics for all channels for this day.

Channel	Min	Max	ADC
A1	-17414	18386	16bit
B1	-18766	16348	16bit
C1	-24263	21731	16bit
D1	-27407	32767	16bit
A2	-15132	18544	16bit
B2	-16771	16515	16bit
C2	-22730	24507	16bit
D2	-32768	32464	16bit

MIPNLOP\_MIPSOUPAC\_aux\_fields\_igm\_cal, channel statistics plot  
Colour indicates value.



mipas\_daily\_report\_level0\_KSPT\_L0\_4504\_N\_20110216\_11.PNG

### 0.3 ADF monitoring

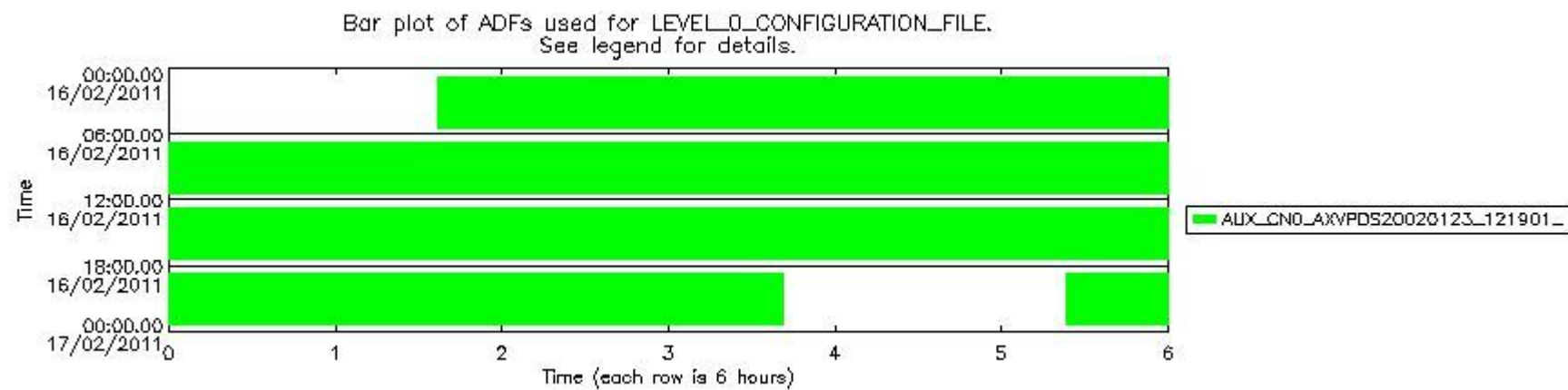
The use of ADFs is shown in two ways:

1. By means of two tables that can be used to find the ADF used for a specific product.
2. By means of plots that show changes in ADF using colours.

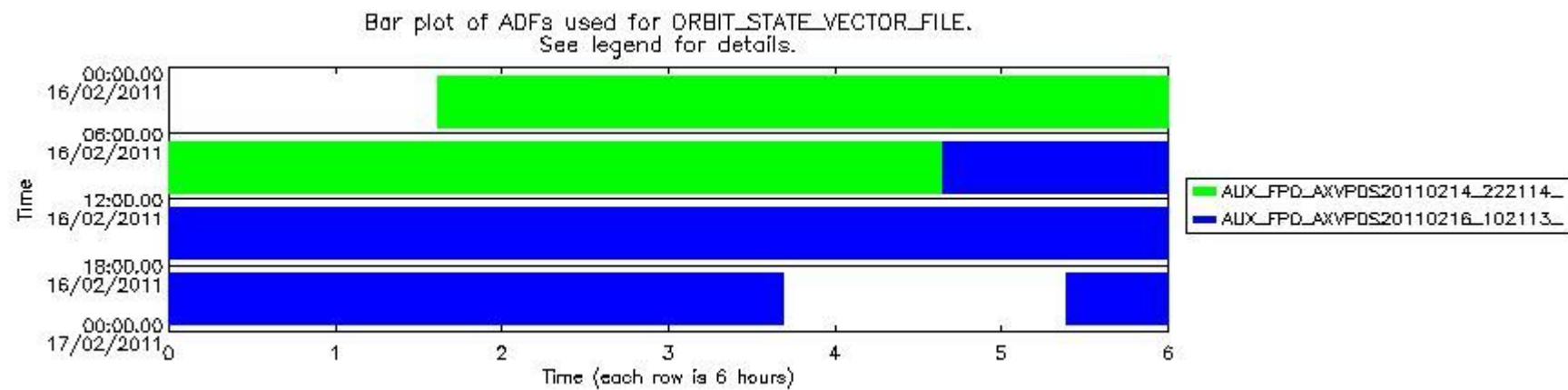
Number	ADF
0	AUX_CN0_AXVPDS20020123_121901_20020101_000000_20200101_000000
1	AUX_FPO_AXVPDS20110214_222114_20110213_184313_20110223_205703
2	AUX_FPO_AXVPDS20110216_102113_20110215_190959_20110225_212349

Number	Product name	#CN0	#FPO
--------	--------------	------	------

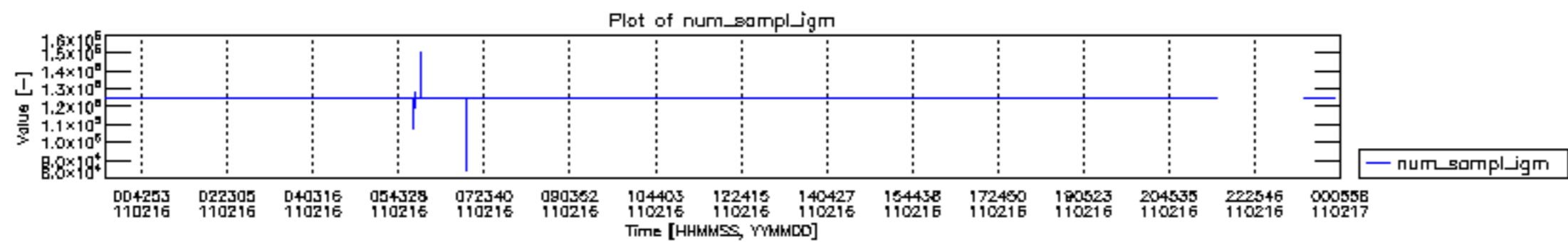
0	MIP_NL__0PNPDE20110216_013649_000044333099_00304_46870_2930.N1	0	1
1	MIP_NL__0PNPDE20110216_025011_000061333099_00305_46871_2931.N1	0	1
2	MIP_NL__0PNPDE20110216_043150_000060313099_00306_46872_2932.N1	0	1
3	MIP_NL__0PNPDK20110216_061148_000040913099_00307_46873_4315.N1	0	1
4	MIP_NL__0PNPDK20110216_071901_000060963099_00308_46874_4316.N1	0	1
5	MIP_NL__0PNPDK20110216_085940_000060603099_00309_46875_4317.N1	0	1
6	MIP_NL__0PNPDK20110216_103905_000059293099_00310_46876_4318.N1	0	2
7	MIP_NL__0PNPDK20110216_121655_000060233099_00311_46877_4319.N1	0	2
8	MIP_NL__0PNPDK20110216_135619_000059563099_00312_46878_4320.N1	0	2
9	MIP_NL__0PNPDK20110216_153436_000059793099_00313_46879_4321.N1	0	2
10	MIP_NL__0PNPDK20110216_171316_000059143099_00314_46880_4322.N1	0	2
11	MIP_NL__0PNPDK20110216_185115_000059753099_00315_46881_4323.N1	0	2
12	MIP_NL__0PNPDE20110216_202909_000043373099_00316_46882_2933.N1	0	2
13	MIP_NL__0PNPDE20110216_232329_000060273099_00317_46883_2934.N1	0	2

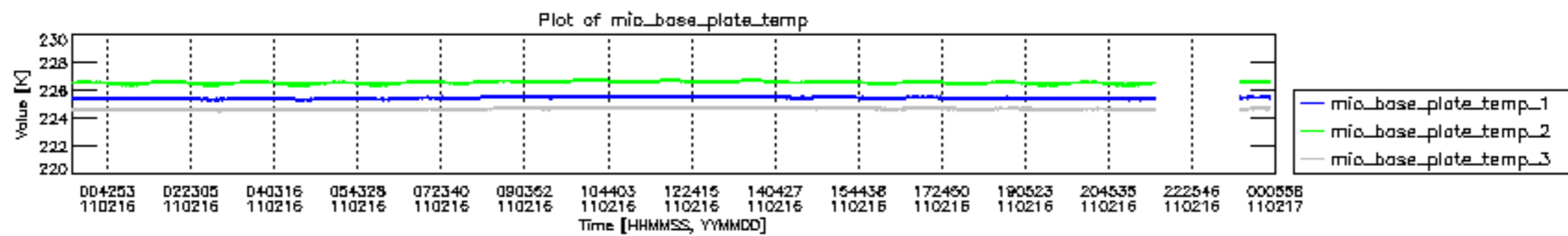


mipas\_daily\_report\_level0\_KSPT\_L0\_4504\_N\_20110216\_12.PNG

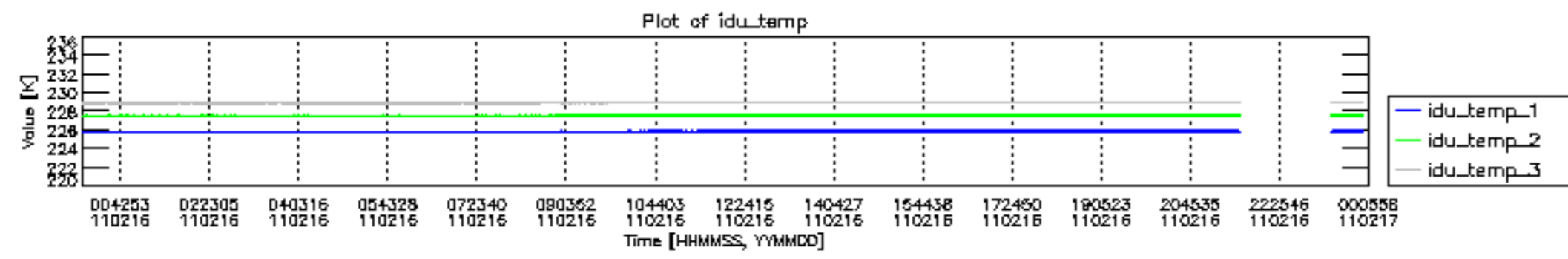


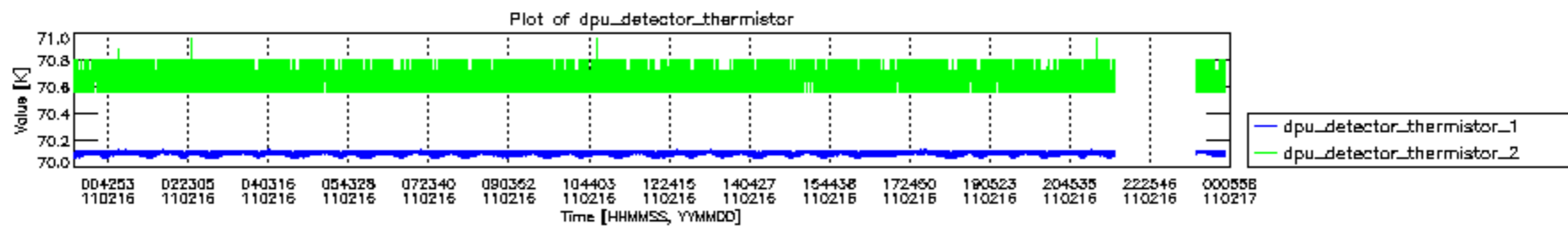
mipas\_daily\_report\_level0\_KSPT\_L0\_4504\_N\_20110216\_13.PNG

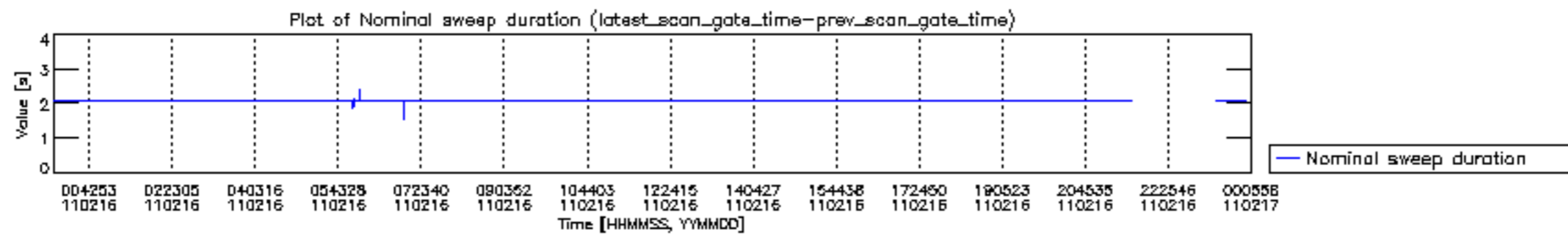


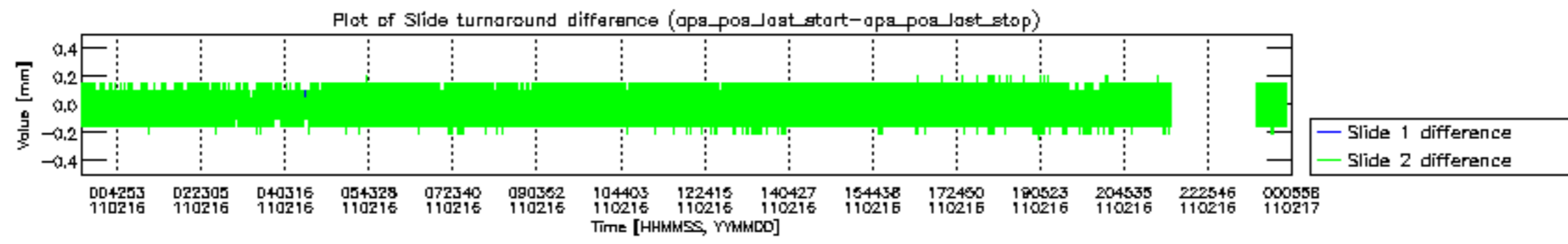


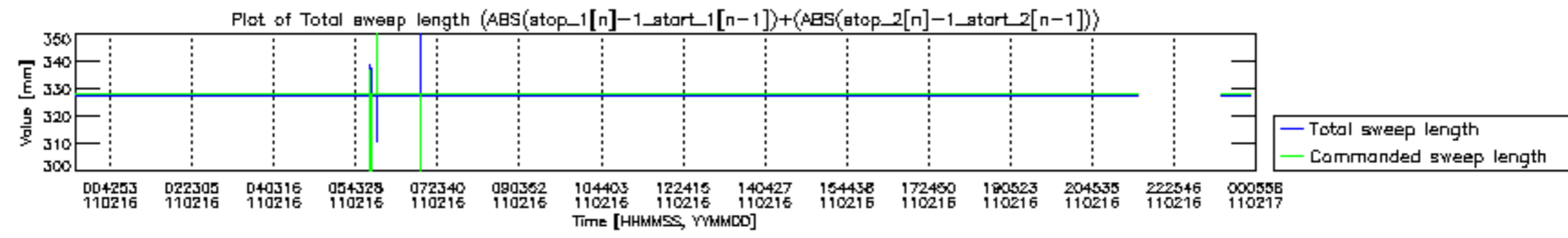


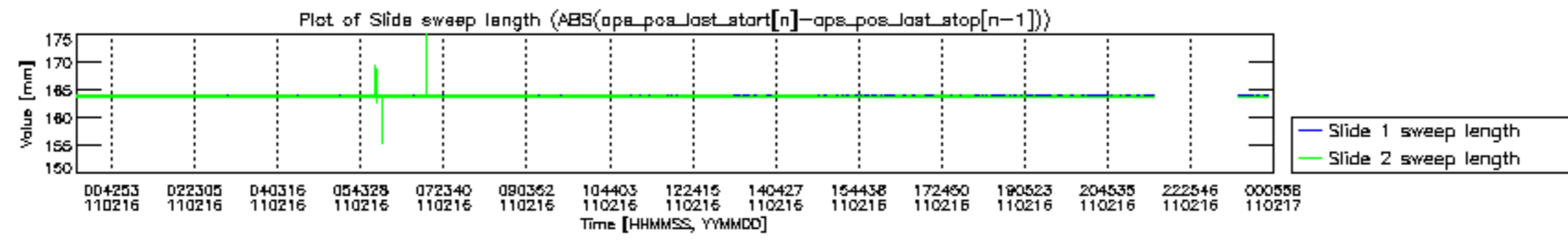


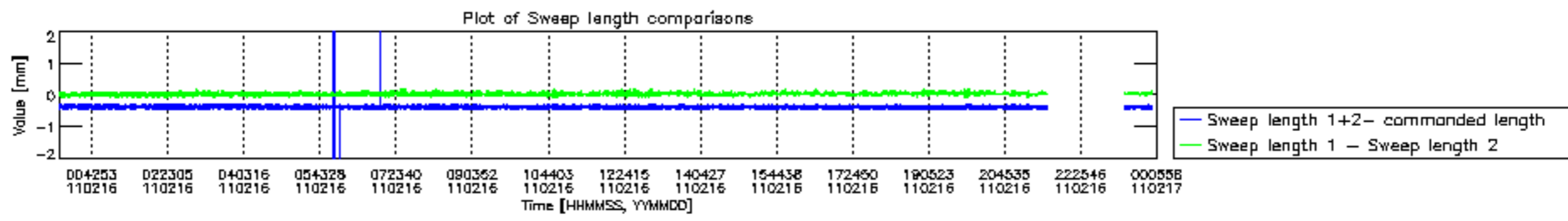


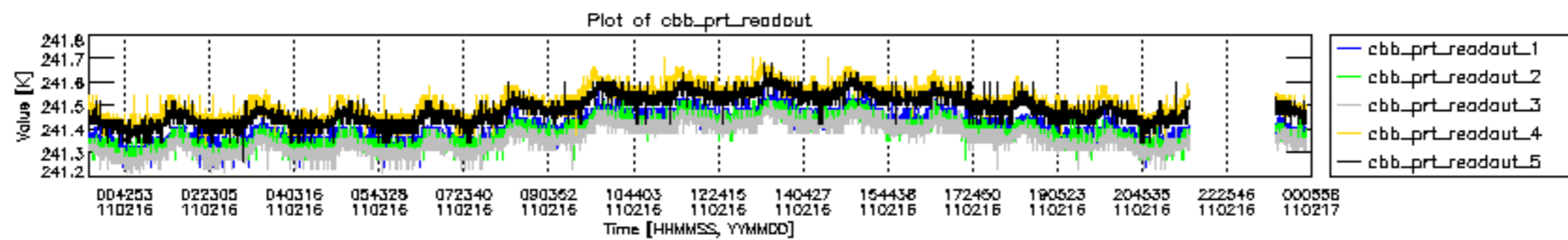




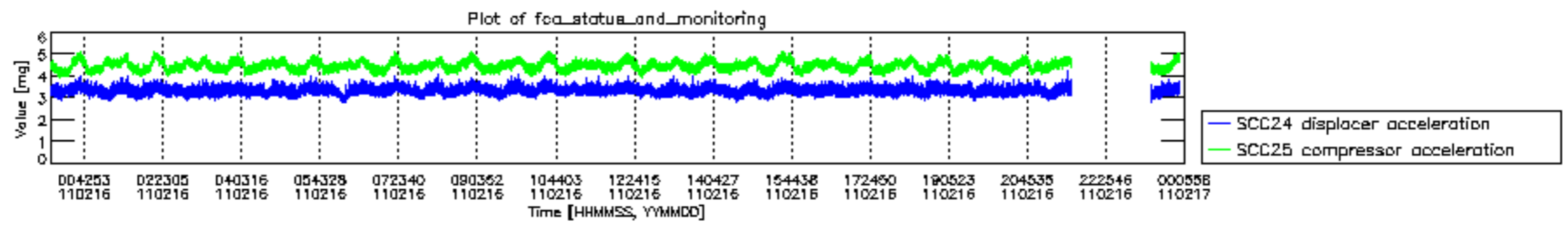












MIPNLOP\_MIPSOUPAC\_aux\_fields\_igm\_cal, channel statistics plot  
 Colour indicates value.

