

## 0. MIPAS Daily Report for level 0 products

### [0.1 General Info](#)

### [0.2 Instrument Operational Performance Parameters](#)

### [0.3 ADF monitoring](#)

## 0.1 General Info

This report contains a daily analysis on parameters extracted from MIPAS level 0 data (The MIP\_NL\_\_0P product).

### 0.1.1 Report summary

The table below shows general characteristics of the data that are included into this report.

Item	Value
Report version	v1.6 08-11-2010
Time of report generation	18FEB2011 05:24:12
Data source version	KSPT_L0/4504-N
Processing scope for products	13FEB2011 00:00:00 to 14FEB2011 00:00:00
Start time of first product within scope	13FEB2011 00:09:23
Stop time of last product within scope	14FEB2011 01:12:50
Total number of level 0 products	16
Number of level 0 products with errors	0

### 0.1.2 Product Quality Indicators per product

The following table shows a summary for each product used in this report.

#	Product name	Start time	Stop time	Prod err	ISP err sign	ISP miss sign	ISP disc sign	rs sign
0	MIP_NL__0PNPDE20110213_000923_000059173099_00260_46826_2909.N1	13FEB2011 00:09:23	13FEB2011 01:48:00	0	0	0	0	0
1	MIP_NL__0PNPDE20110213_014609_000045023099_00261_46827_2910.N1	13FEB2011 01:46:09	13FEB2011 03:01:11	0	0	0	0	0
2	MIP_NL__0PNPDE20110213_030036_000061103099_00262_46828_2911.N1	13FEB2011 03:00:36	13FEB2011 04:42:26	0	0	0	0	0
3	MIP_NL__0PNPDE20110213_044153_000060423099_00263_46829_2912.N1	13FEB2011 04:41:53	13FEB2011 06:22:34	0	0	0	0	0
4	MIP_NL__0PNPDK20110213_062201_000040753099_00264_46830_4289.N1	13FEB2011 06:22:01	13FEB2011 07:29:55	0	0	0	0	0
5	MIP_NL__0PNPDK20110213_072857_000061883099_00265_46831_4290.N1	13FEB2011 07:28:57	13FEB2011 09:12:04	0	0	0	0	0
6	MIP_NL__0PNPDK20110213_091028_000060293099_00266_46832_4291.N1	13FEB2011 09:10:28	13FEB2011 10:50:57	0	0	0	0	0
7	MIP_NL__0PNPDK20110213_104921_000060533099_00267_46833_4292.N1	13FEB2011 10:49:21	13FEB2011 12:30:14	0	0	0	0	0
8	MIP_NL__0PNPDK20110213_122834_000058793099_00268_46834_4293.N1	13FEB2011 12:28:34	13FEB2011 14:06:32	0	0	0	0	0
9	MIP_NL__0PNPDK20110213_140448_000060373099_00269_46835_4294.N1	13FEB2011 14:04:48	13FEB2011 15:45:25	0	0	0	0	0
10	MIP_NL__0PNPDK20110213_154343_000058913099_00270_46836_4295.N1	13FEB2011 15:43:43	13FEB2011 17:21:54	0	0	0	0	0
11	MIP_NL__0PNPDK20110213_172118_000060313099_00271_46837_4296.N1	13FEB2011 17:21:18	13FEB2011 19:01:49	0	0	0	0	0
12	MIP_NL__0PNPDK20110213_190101_000058533099_00272_46838_4297.N1	13FEB2011 19:01:01	13FEB2011 20:38:35	0	0	0	0	0
13	MIP_NL__0PNPDE20110213_203703_000044833099_00273_46839_2913.N1	13FEB2011 20:37:03	13FEB2011 21:51:46	0	0	0	0	0
14	MIP_NL__0PNPDE20110213_215037_000061633099_00273_46839_2914.N1	13FEB2011 21:50:37	13FEB2011 23:33:19	0	0	0	0	0
15	MIP_NL__0PNPDE20110213_233208_000060413099_00274_46840_2915.N1	13FEB2011 23:32:08	14FEB2011 01:12:50	0	0	0	0	0

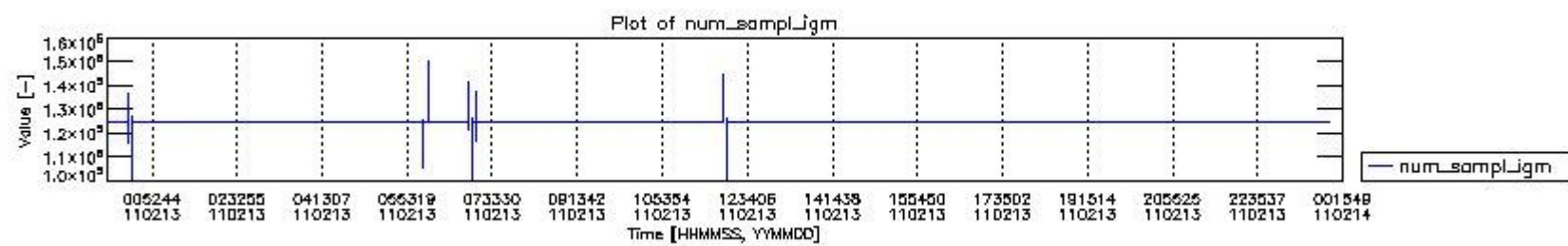
## 0.2 Instrument Operational Performance Parameters

The following plots give an overview of various instrument parameters for this day. The instrument parameters are part of the auxiliary data field within the source packets of the MIP\_NL\_\_0P product. The auxiliary data is normally included twice per interferogram. Note that only the first packet is currently included in monitoring.

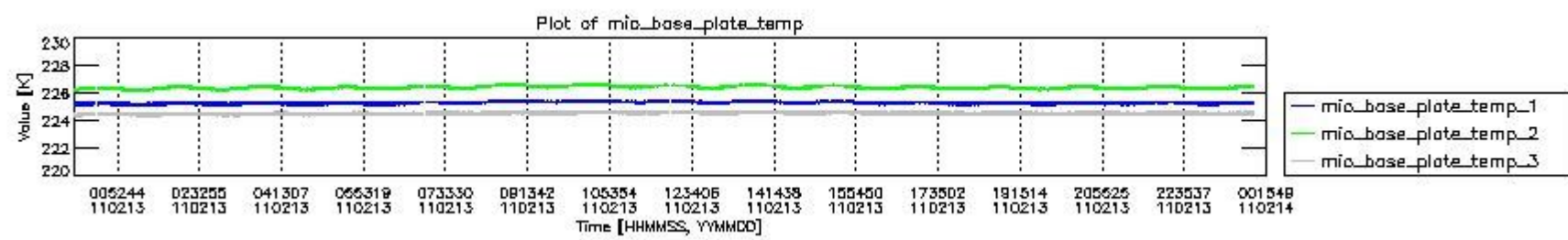
The following table shows the counts of various interferogram number of samples

Number of igm samples	Count [#]	Count [%]
100483	2	0.0048333696
100706	1	0.0024166848

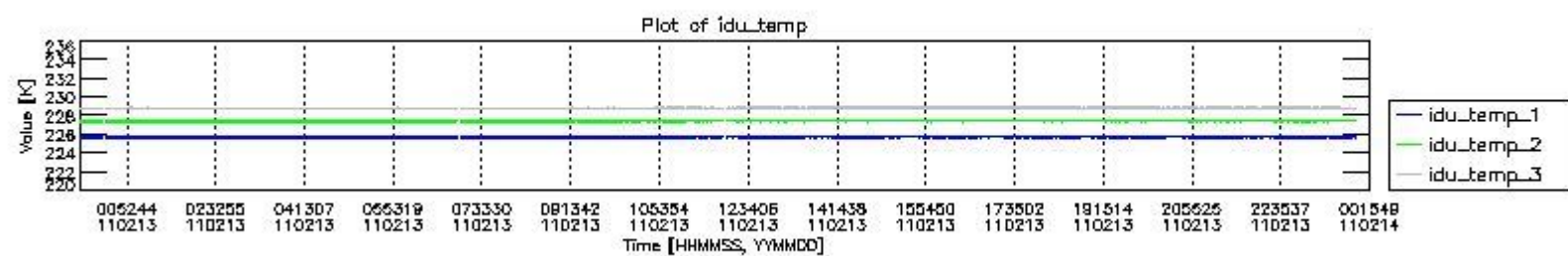
105451	1	0.0024166848
106234	1	0.0024166848
116305	1	0.0024166848
117123	1	0.0024166848
121658	1	0.0024166848
124631	1	0.0024166848
124800	38870	93.936538
124803	2482	5.9982117
125583	1	0.0024166848
125735	2	0.0048333696
125958	1	0.0024166848
126670	2	0.0048333696
127116	1	0.0024166848
127382	1	0.0024166848
127942	1	0.0024166848
129578	1	0.0024166848
136437	1	0.0024166848
137255	1	0.0024166848
138648	1	0.0024166848
141790	1	0.0024166848
144594	1	0.0024166848
144763	1	0.0024166848
147514	1	0.0024166848
150096	1	0.0024166848



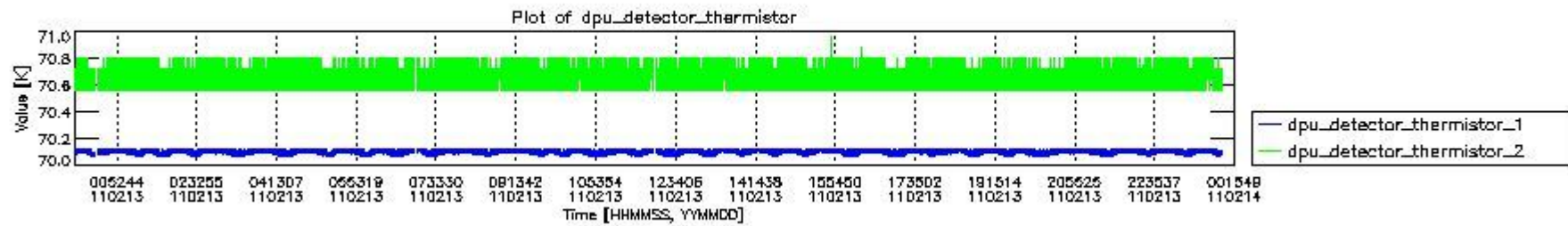
mipas\_daily\_report\_level0\_KSPT\_L0\_4504\_N\_20110213\_0.PNG



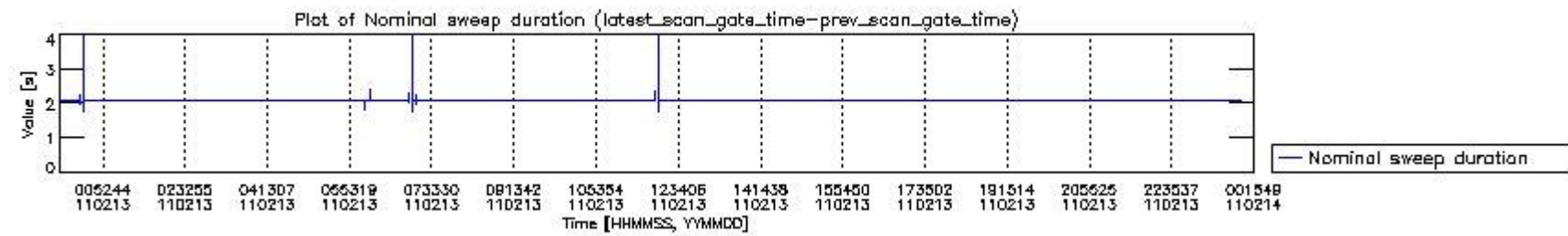
mipas\_daily\_report\_level0\_KSPT\_L0\_4504\_N\_20110213\_1.PNG



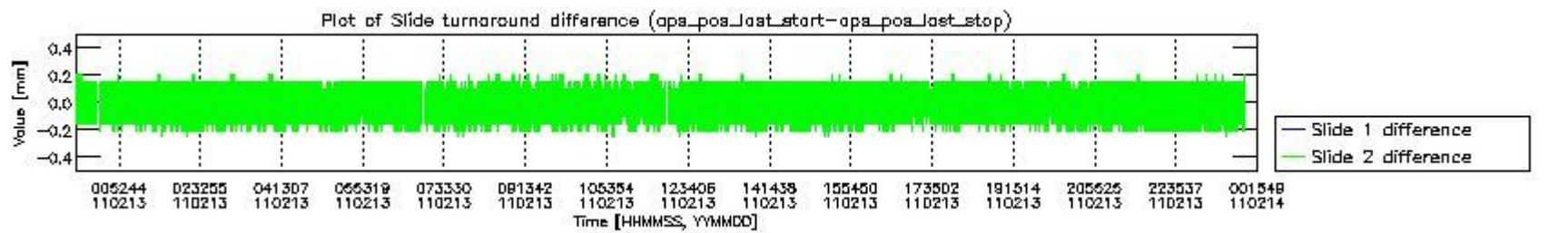
mipas\_daily\_report\_level0\_KSPT\_L0\_4504\_N\_20110213\_2.PNG



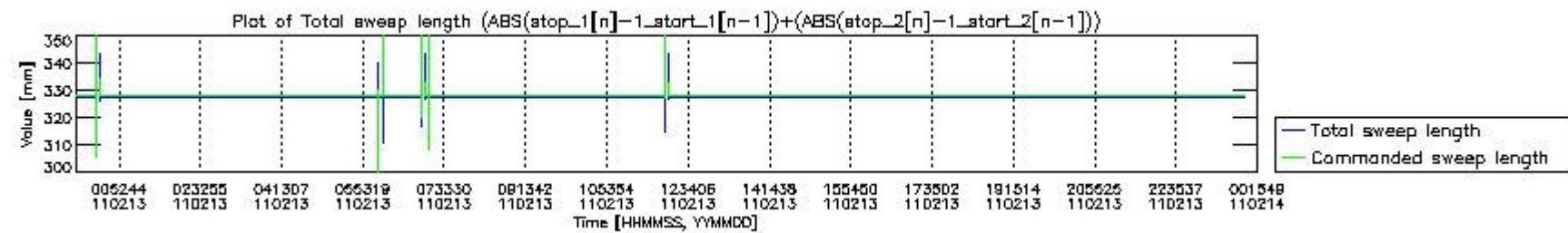
mipas\_daily\_report\_level0\_KSPT\_L0\_4504\_N\_20110213\_3.PNG



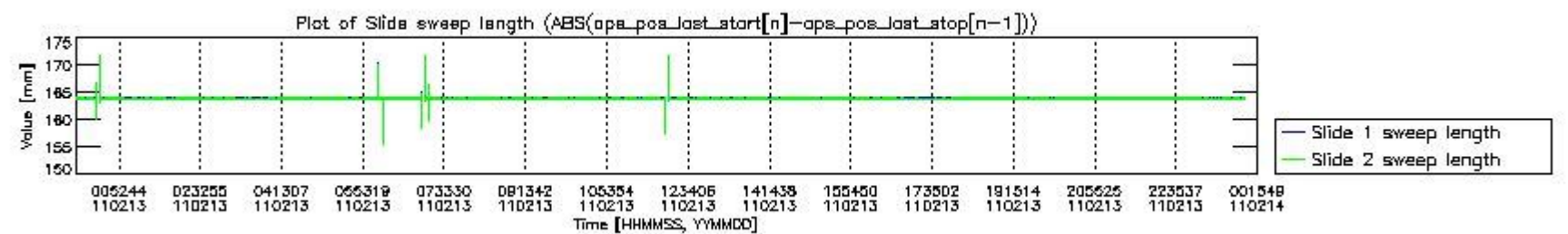
mipas\_daily\_report\_level0\_KSPT\_L0\_4504\_N\_20110213\_4.PNG



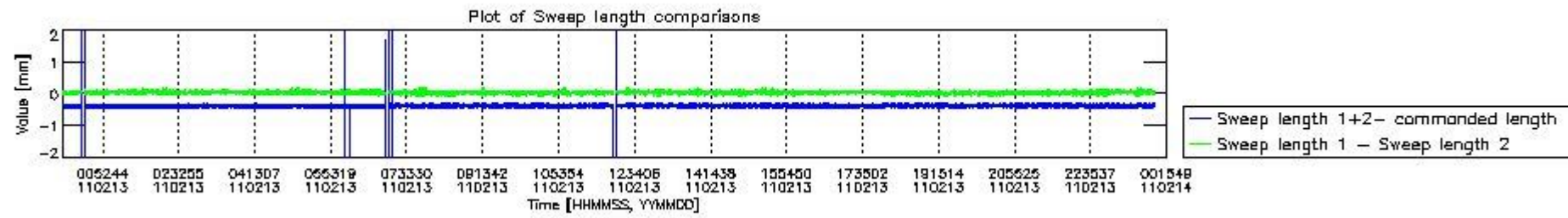
mipas\_daily\_report\_level0\_KSPT\_L0\_4504\_N\_20110213\_5.PNG



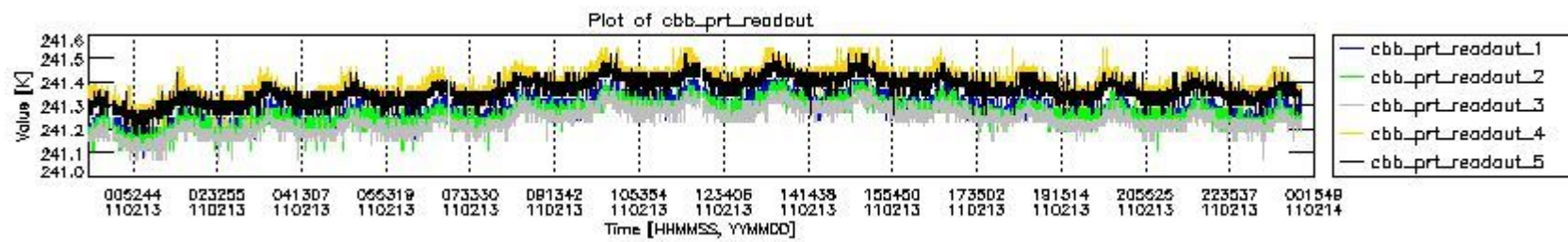
mipas\_daily\_report\_level0\_KSPT\_L0\_4504\_N\_20110213\_6.PNG



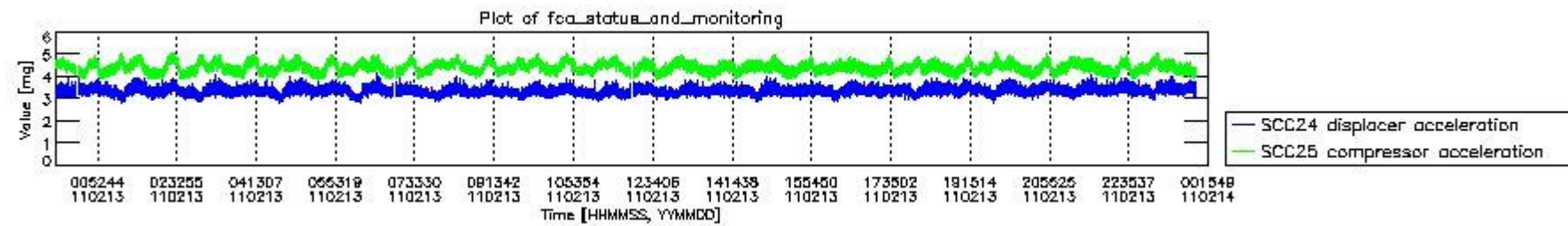
mipas\_daily\_report\_level0\_KSPT\_L0\_4504\_N\_20110213\_7.PNG



mipas\_daily\_report\_level0\_KSPT\_L0\_4504\_N\_20110213\_8.PNG



mipas\_daily\_report\_level0\_KSPT\_L0\_4504\_N\_20110213\_9.PNG

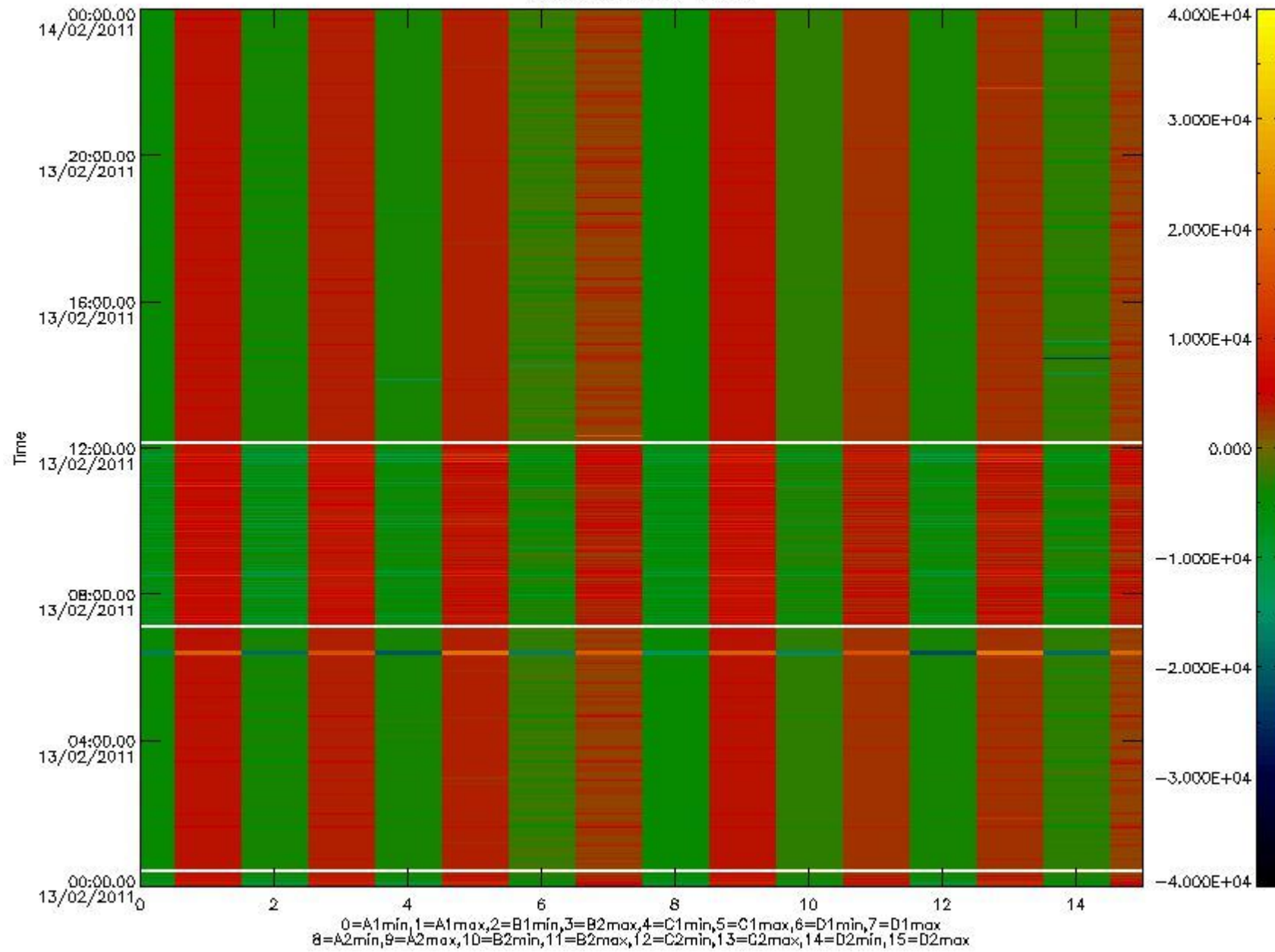


mipas\_daily\_report\_level0\_KSPT\_L0\_4504\_N\_20110213\_10.PNG

The following table shows channel statistics for all channels for this day.

Channel	Min	Max	ADC
A1	-17395	18387	16bit
B1	-18702	16291	16bit
C1	-23021	21544	16bit
D1	-24208	30991	16bit
A2	-15113	18517	16bit
B2	-16714	16439	16bit
C2	-22594	22841	16bit
D2	-32768	30422	16bit

MIPNLOP\_MIPSOUPAC\_aux\_fields\_igm\_cal, channel statistics plot  
Colour indicates value.



mipas\_daily\_report\_level0\_KSPT\_L0\_4504\_N\_20110213\_11.PNG

### 0.3 ADF monitoring

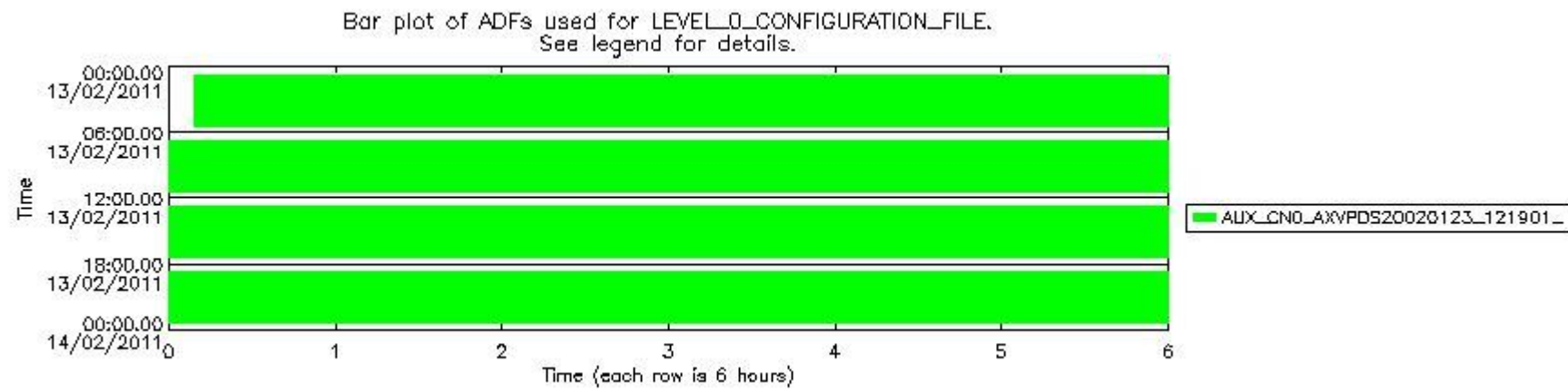
The use of ADFs is shown in two ways:

1. By means of two tables that can be used to find the ADF used for a specific product.
2. By means of plots that show changes in ADF using colours.

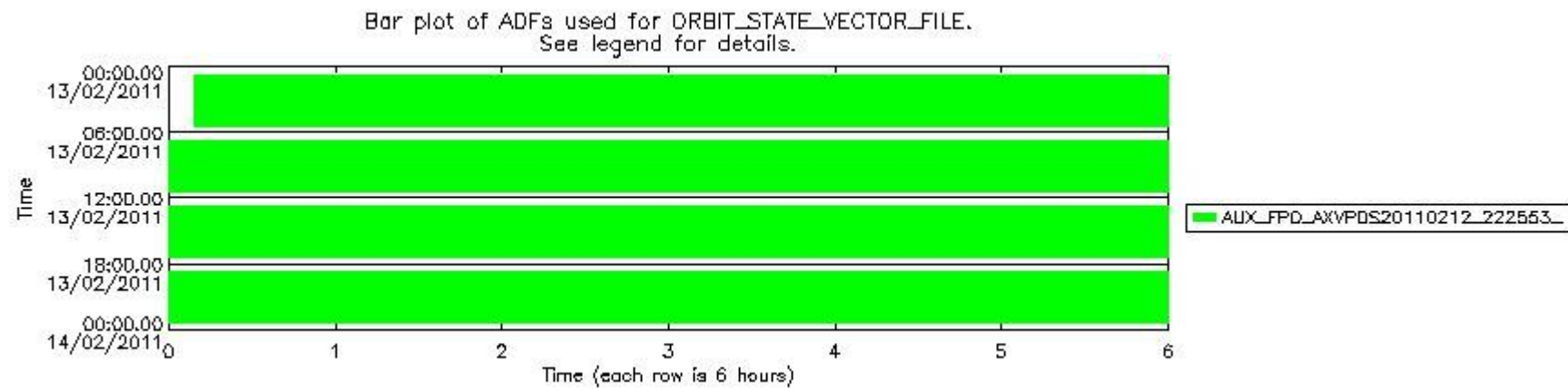
Number	ADF
0	AUX_CN0_AXVPDS20020123_121901_20020101_000000_20200101_000000
1	AUX_FPO_AXVPDS20110212_222553_20110212_191957_20110222_213348

Number	Product name	#CN0	#FPO
0	MIP_NL_0PNPDE20110213_000923_000059173099_00260_46826_2909.N1	0	1

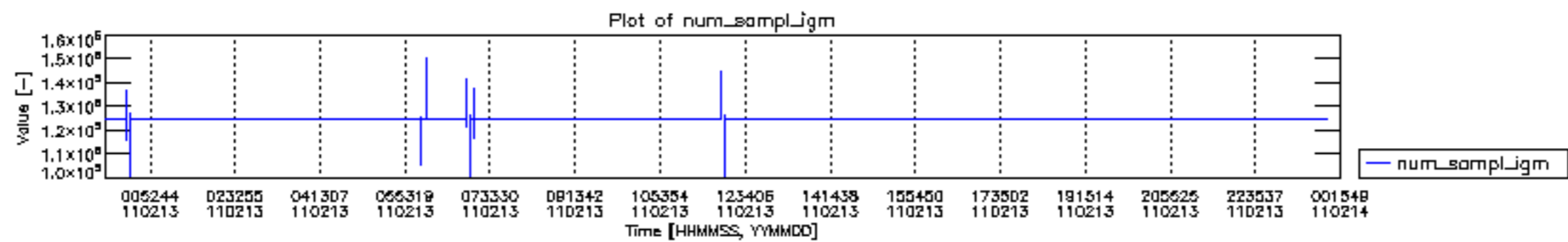
1	MIP_NL__0PNPDE20110213_014609_000045023099_00261_46827_2910.N1	0	1
2	MIP_NL__0PNPDE20110213_030036_000061103099_00262_46828_2911.N1	0	1
3	MIP_NL__0PNPDE20110213_044153_000060423099_00263_46829_2912.N1	0	1
4	MIP_NL__0PNPDK20110213_062201_000040753099_00264_46830_4289.N1	0	1
5	MIP_NL__0PNPDK20110213_072857_000061883099_00265_46831_4290.N1	0	1
6	MIP_NL__0PNPDK20110213_091028_000060293099_00266_46832_4291.N1	0	1
7	MIP_NL__0PNPDK20110213_104921_000060533099_00267_46833_4292.N1	0	1
8	MIP_NL__0PNPDK20110213_122834_000058793099_00268_46834_4293.N1	0	1
9	MIP_NL__0PNPDK20110213_140448_000060373099_00269_46835_4294.N1	0	1
10	MIP_NL__0PNPDK20110213_154343_000058913099_00270_46836_4295.N1	0	1
11	MIP_NL__0PNPDK20110213_172118_000060313099_00271_46837_4296.N1	0	1
12	MIP_NL__0PNPDK20110213_190101_000058533099_00272_46838_4297.N1	0	1
13	MIP_NL__0PNPDE20110213_203703_000044833099_00273_46839_2913.N1	0	1
14	MIP_NL__0PNPDE20110213_215037_000061633099_00273_46839_2914.N1	0	1
15	MIP_NL__0PNPDE20110213_233208_000060413099_00274_46840_2915.N1	0	1

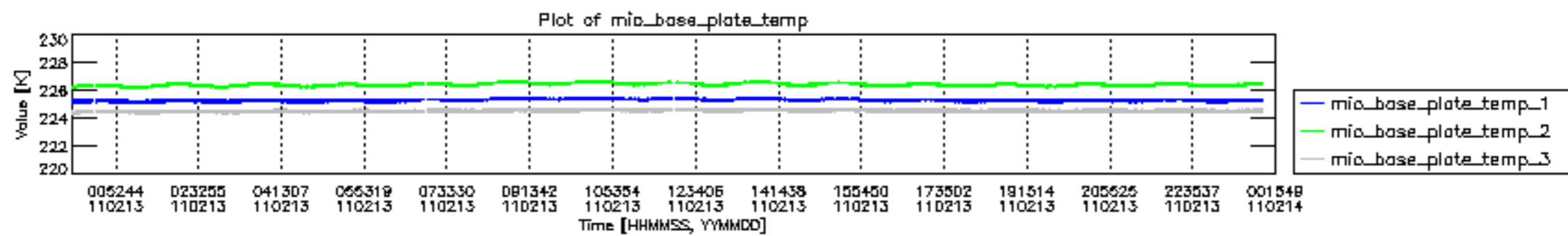


mipas\_daily\_report\_level0\_KSPT\_L0\_4504\_N\_20110213\_12.PNG

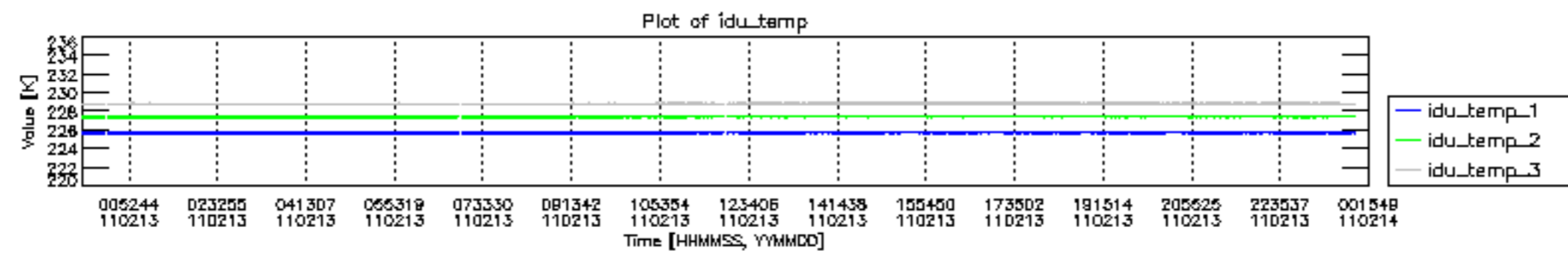


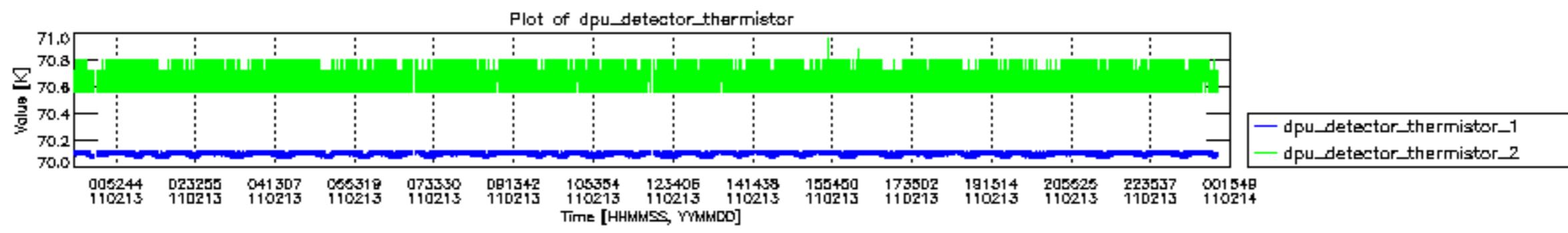
mipas\_daily\_report\_level0\_KSPT\_L0\_4504\_N\_20110213\_13.PNG

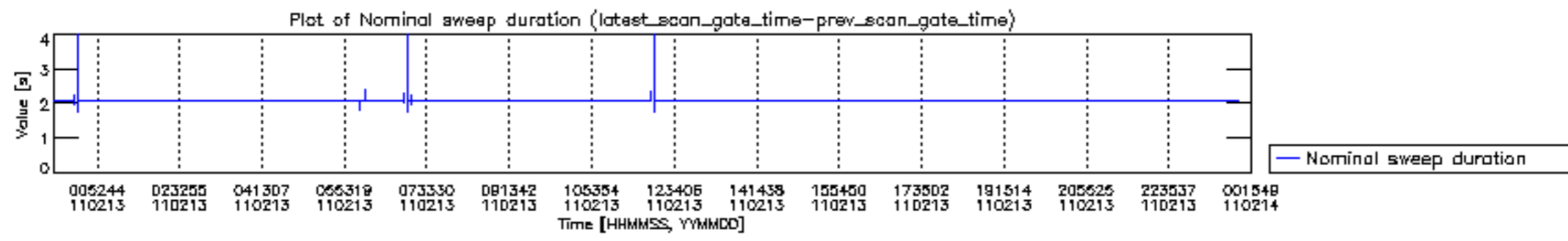




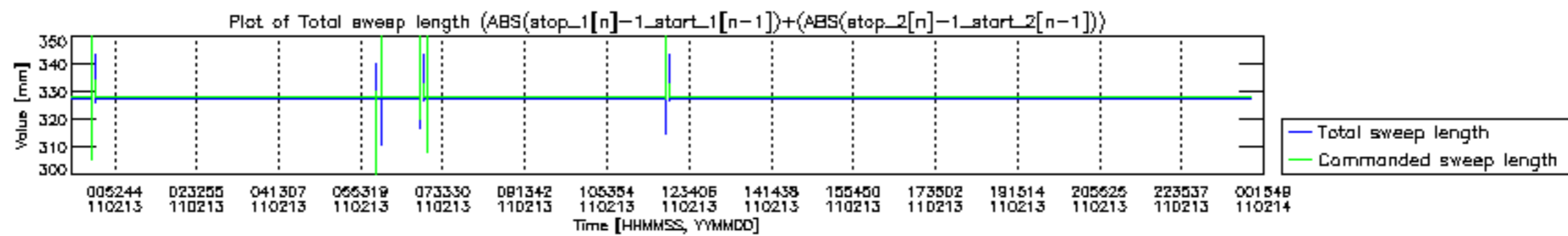


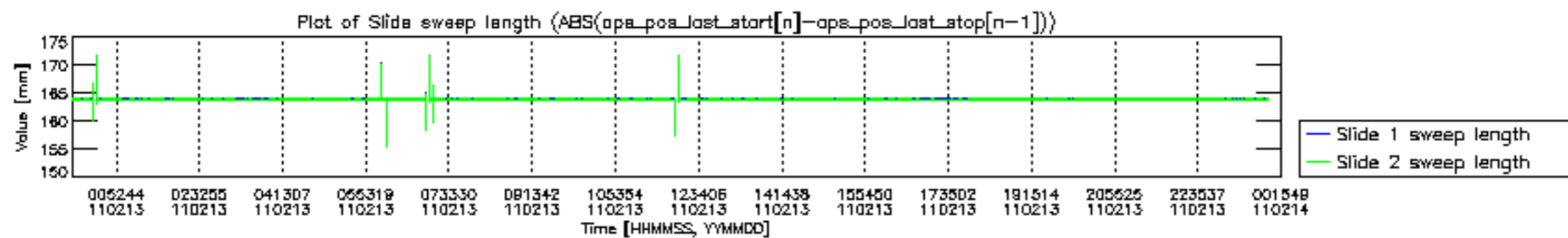


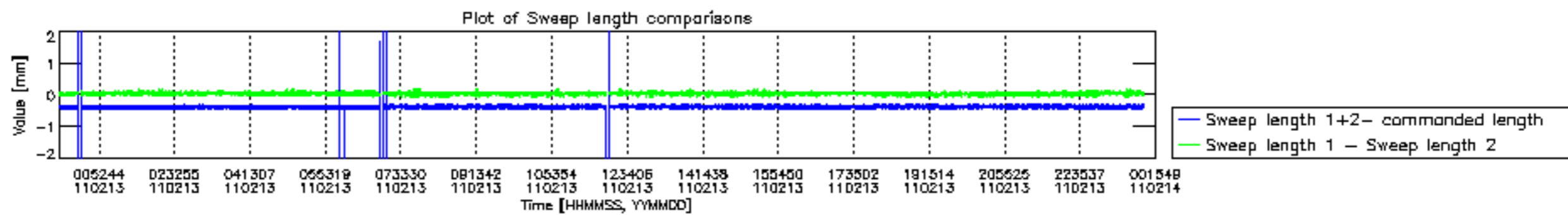


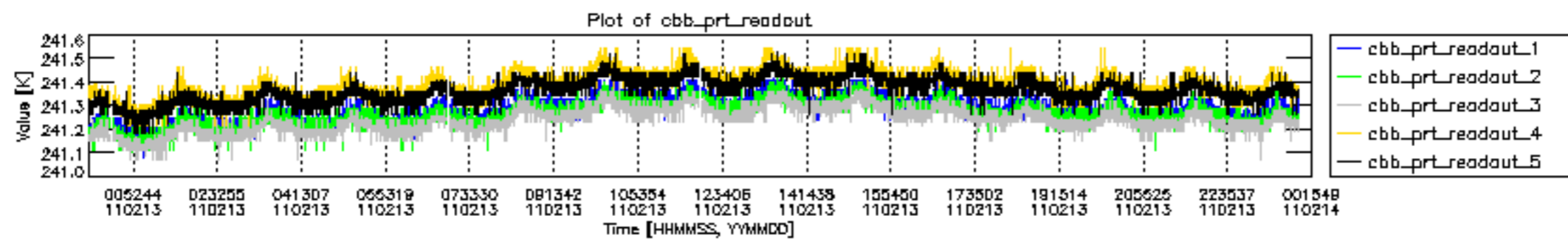




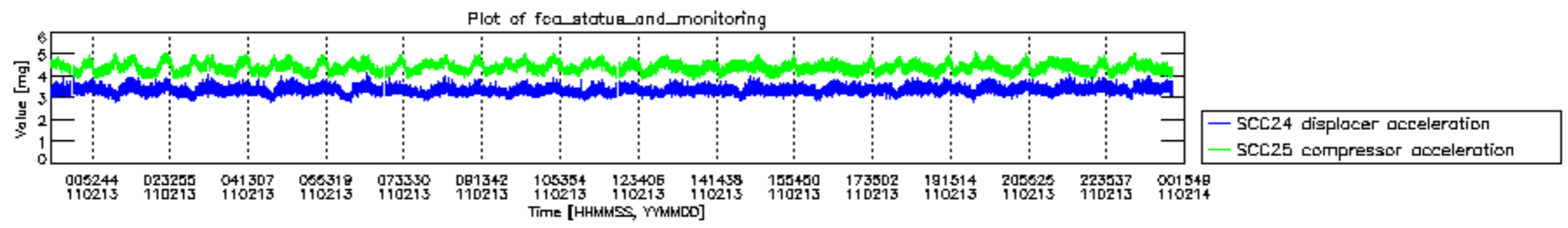












MIPNLOP\_MIPSOUPAC\_aux\_fields\_igm\_cal, channel statistics plot  
 Colour indicates value.

