

0. MIPAS Daily Report for level 0 products

[0.1 General Info](#)

[0.2 Instrument Operational Performance Parameters](#)

[0.3 ADF monitoring](#)

0.1 General Info

This report contains a daily analysis on parameters extracted from MIPAS level 0 data (The MIP_NL__0P product).

0.1.1 Report summary

The table below shows general characteristics of the data that are included into this report.

Item	Value
Report version	v1.6 08-11-2010
Time of report generation	17FEB2011 05:23:54
Data source version	KSPT_L0/4504-N
Processing scope for products	12FEB2011 00:00:00 to 13FEB2011 00:00:00
Start time of first product within scope	12FEB2011 00:46:54
Stop time of last product within scope	13FEB2011 00:10:30
Total number of level 0 products	15
Number of level 0 products with errors	1

0.1.2 Product Quality Indicators per product

The following table shows a summary for each product used in this report.

#	Product name	Start time	Stop time	Prod err	ISP err sign	ISP miss sign	ISP disc sign	rs sign
0	MIP_NL__0PNPDE20110212_004654_000057803099_00246_46812_2903.N1	12FEB2011 00:46:54	12FEB2011 02:23:15	0	0	0	0	0
1	MIP_NL__0PNPDE20110212_022128_000045773099_00247_46813_2904.N1	12FEB2011 02:21:28	12FEB2011 03:37:45	1	1	0	0	0
2	MIP_NL__0PNPDE20110212_033714_000061373099_00248_46814_2905.N1	12FEB2011 03:37:14	12FEB2011 05:19:31	0	0	0	0	0
3	MIP_NL__0PNPDE20110212_051856_000060243099_00249_46815_2906.N1	12FEB2011 05:18:56	12FEB2011 06:59:19	0	0	0	0	0
4	MIP_NL__0PNPDK20110212_065846_000040723099_00250_46816_4280.N1	12FEB2011 06:58:46	12FEB2011 08:06:37	0	0	0	0	0
5	MIP_NL__0PNPDK20110212_080541_000060963099_00251_46817_4281.N1	12FEB2011 08:05:41	12FEB2011 09:47:17	0	0	0	0	0
6	MIP_NL__0PNPDK20110212_094539_000060333099_00252_46818_4282.N1	12FEB2011 09:45:39	12FEB2011 11:26:12	0	0	0	0	0
7	MIP_NL__0PNPDK20110212_112438_000061233099_00253_46819_4283.N1	12FEB2011 11:24:38	12FEB2011 13:06:41	0	0	0	0	0
8	MIP_NL__0PNPDK20110212_130500_000058873099_00254_46820_4284.N1	12FEB2011 13:05:00	12FEB2011 14:43:07	0	0	0	0	0
9	MIP_NL__0PNPDK20110212_144209_000060003099_00255_46821_4285.N1	12FEB2011 14:42:09	12FEB2011 16:22:09	0	0	0	0	0
10	MIP_NL__0PNPDK20110212_162112_000058763099_00256_46822_4286.N1	12FEB2011 16:21:12	12FEB2011 17:59:09	0	0	0	0	0
11	MIP_NL__0PNPDK20110212_175833_000059083099_00257_46823_4287.N1	12FEB2011 17:58:33	12FEB2011 19:37:01	0	0	0	0	0
12	MIP_NL__0PNPDK20110212_193518_000062193099_00258_46824_4288.N1	12FEB2011 19:35:18	12FEB2011 21:18:57	0	0	0	0	0
13	MIP_NL__0PNPDE20110212_211816_000042603099_00259_46825_2907.N1	12FEB2011 21:18:16	12FEB2011 22:29:15	0	0	0	0	0
14	MIP_NL__0PNPDE20110212_222808_000061423099_00259_46825_2908.N1	12FEB2011 22:28:08	13FEB2011 00:10:30	0	0	0	0	0

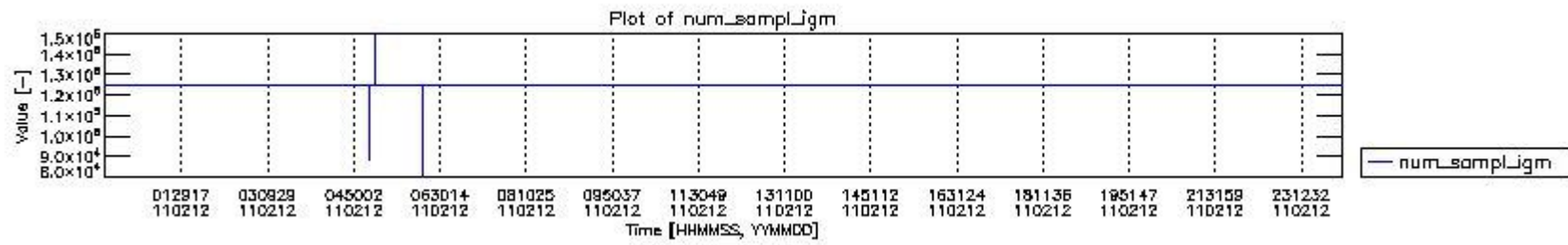
0.2 Instrument Operational Performance Parameters

The following plots give an overview of various instrument parameters for this day. The instrument parameters are part of the auxiliary data field within the source packets of the MIP_NL__0P product. The auxiliary data is normally included twice per interferogram. Note that only the first packet is currently included in monitoring.

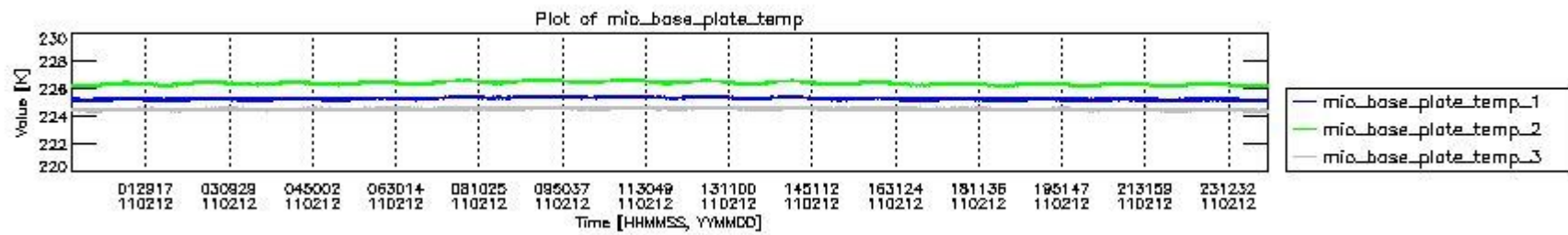
The following table shows the counts of various interferogram number of samples

Number of igm samples	Count [#]	Count [%]
80364	1	0.0024000384
87946	1	0.0024000384
92516	1	0.0024000384

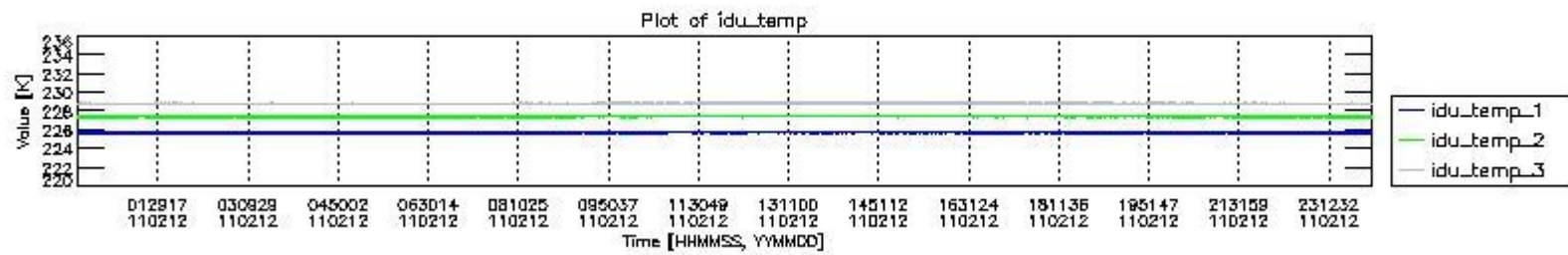
96307	1	0.0024000384
112648	1	0.0024000384
116439	1	0.0024000384
124800	38699	92.879086
124803	2958	7.0993136
127233	1	0.0024000384
147365	1	0.0024000384
149798	1	0.0024000384



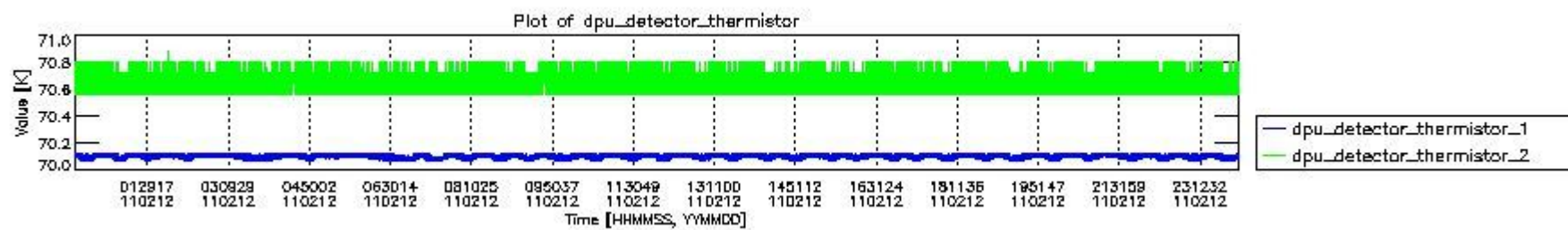
mipas_daily_report_level0_KSPT_L0_4504_N_20110212_0.PNG



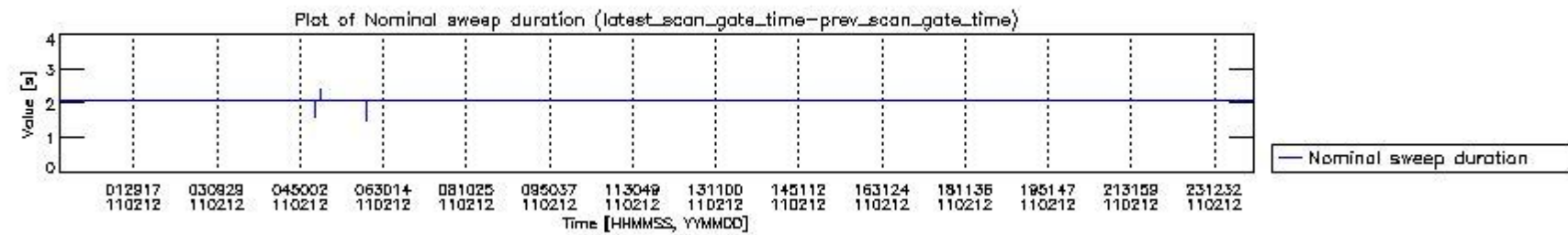
mipas_daily_report_level0_KSPT_L0_4504_N_20110212_1.PNG



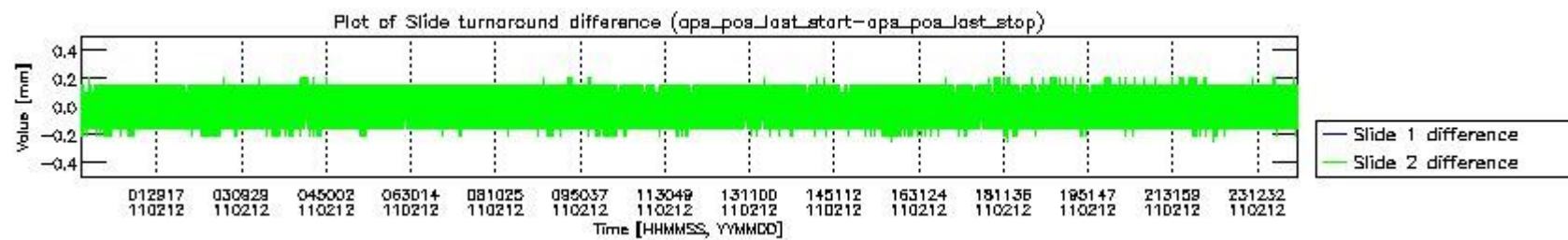
mipas_daily_report_level0_KSPT_L0_4504_N_20110212_2.PNG



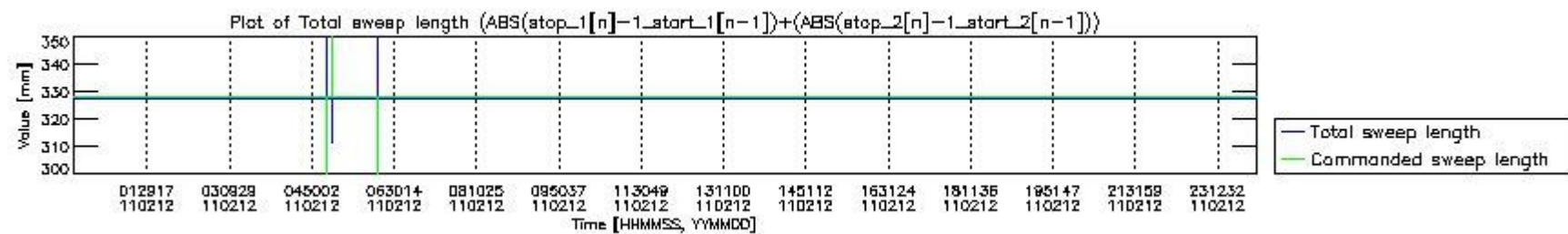
mipas_daily_report_level0_KSPT_L0_4504_N_20110212_3.PNG



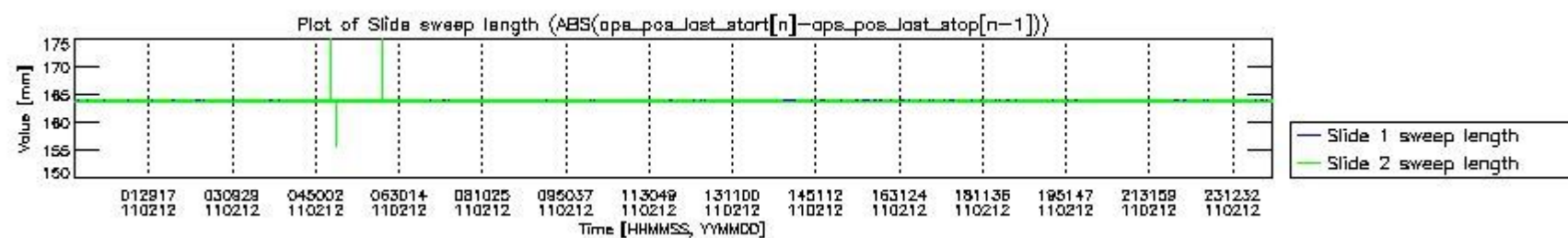
mipas_daily_report_level0_KSPT_L0_4504_N_20110212_4.PNG



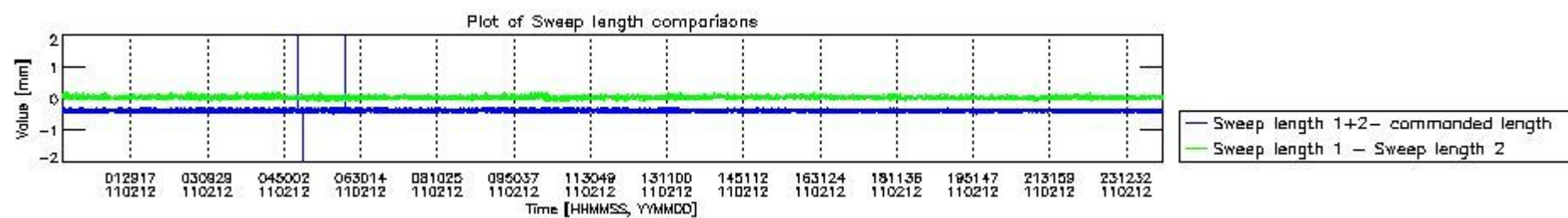
mipas_daily_report_level0_KSPT_L0_4504_N_20110212_5.PNG



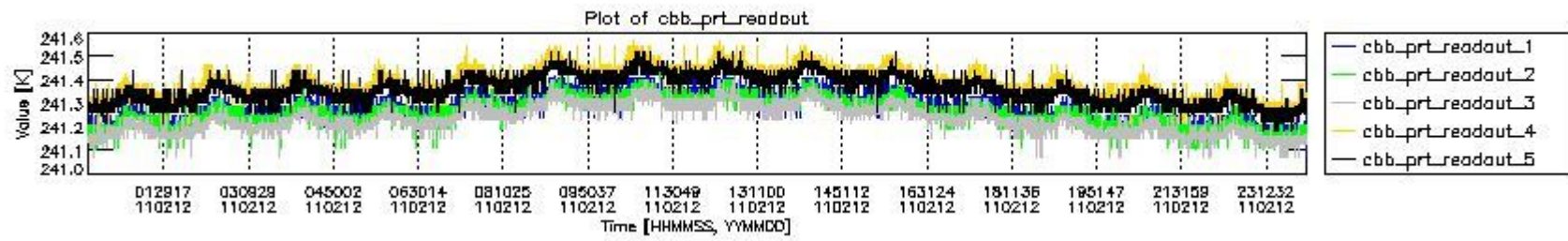
mipas_daily_report_level0_KSPT_L0_4504_N_20110212_6.PNG



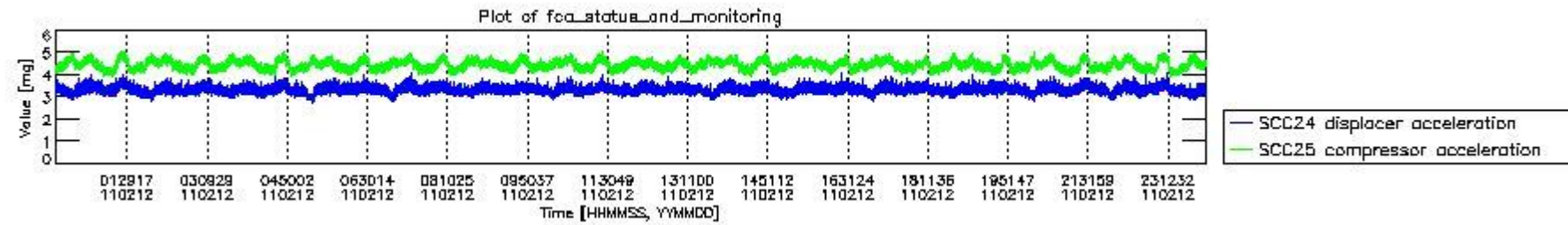
mipas_daily_report_level0_KSPT_L0_4504_N_20110212_7.PNG



mipas_daily_report_level0_KSPT_L0_4504_N_20110212_8.PNG



mipas_daily_report_level0_KSPT_L0_4504_N_20110212_9.PNG

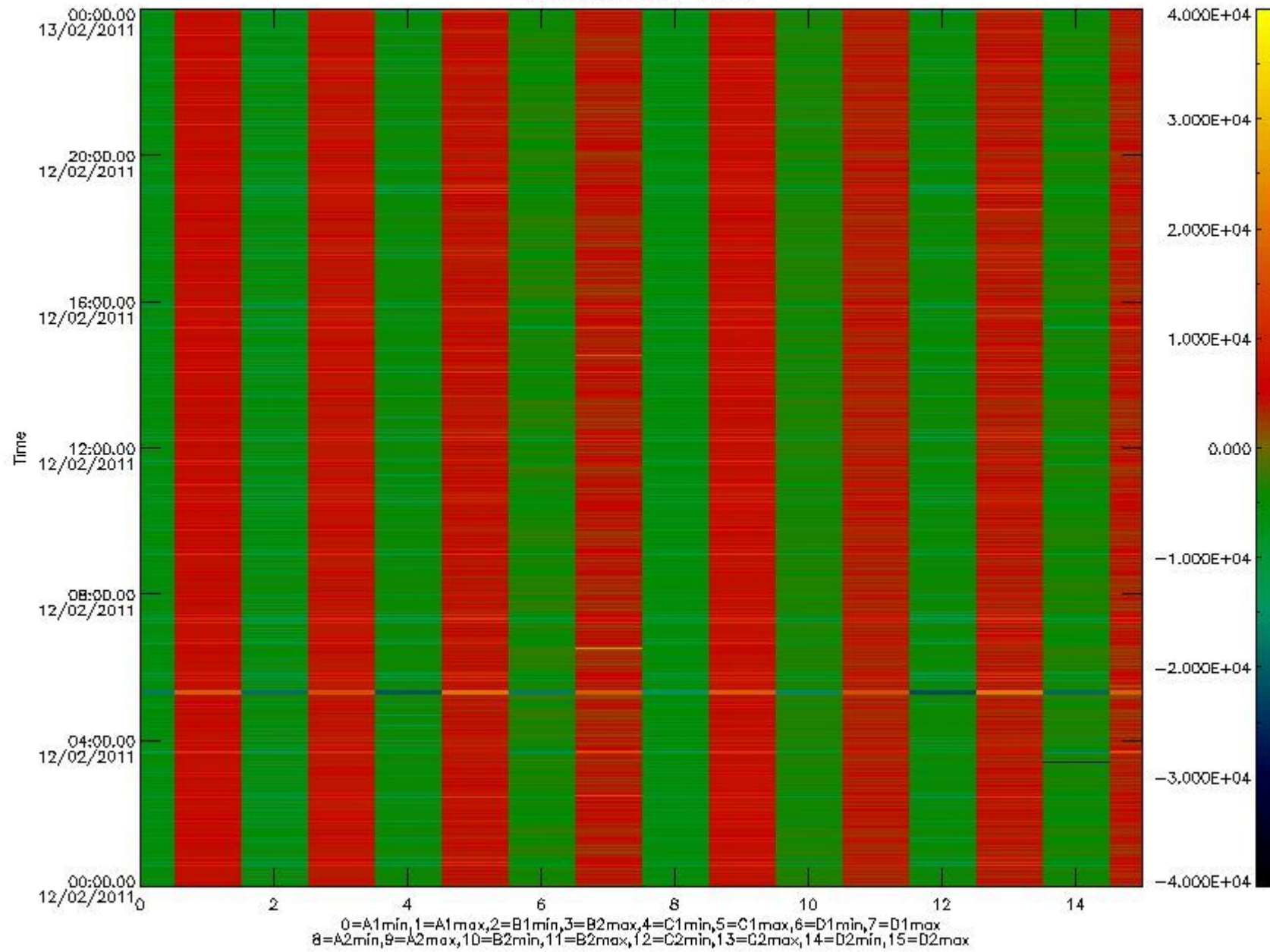


mipas_daily_report_level0_KSPT_L0_4504_N_20110212_10.PNG

The following table shows channel statistics for all channels for this day.

Channel	Min	Max	ADC
A1	-17402	18388	16bit
B1	-18711	16292	16bit
C1	-24281	21609	16bit
D1	-26116	32767	16bit
A2	-15117	18516	16bit
B2	-16713	16456	16bit
C2	-22651	23878	16bit
D2	-32768	29548	16bit

MIPNLOP_MIPSOUPAC_aux_fields_igm_cal, channel statistics plot
Colour indicates value.



mipas_daily_report_level0_KSPT_L0_4504_N_20110212_11.PNG

0.3 ADF monitoring

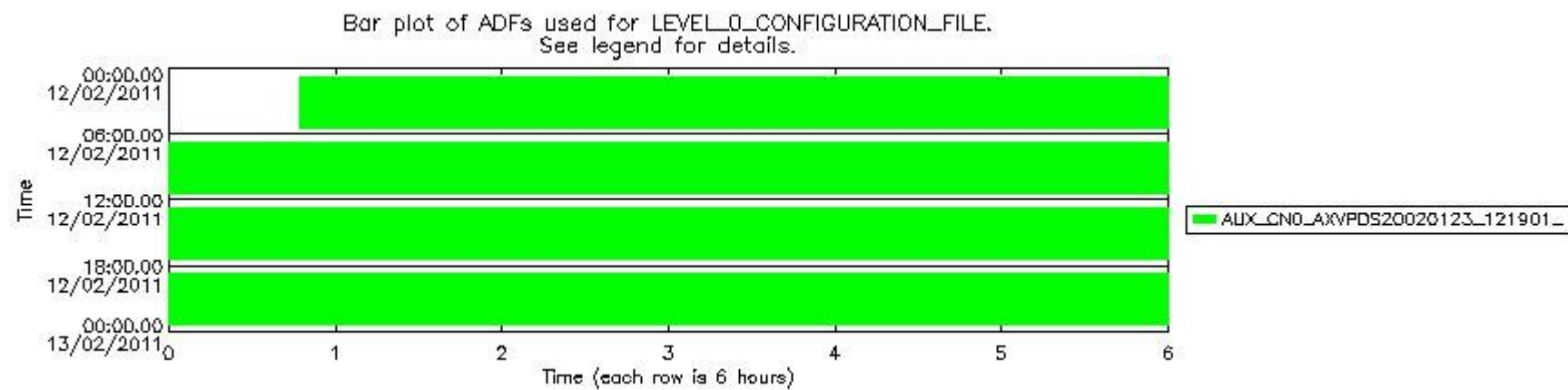
The use of ADFs is shown in two ways:

1. By means of two tables that can be used to find the ADF used for a specific product.
2. By means of plots that show changes in ADF using colours.

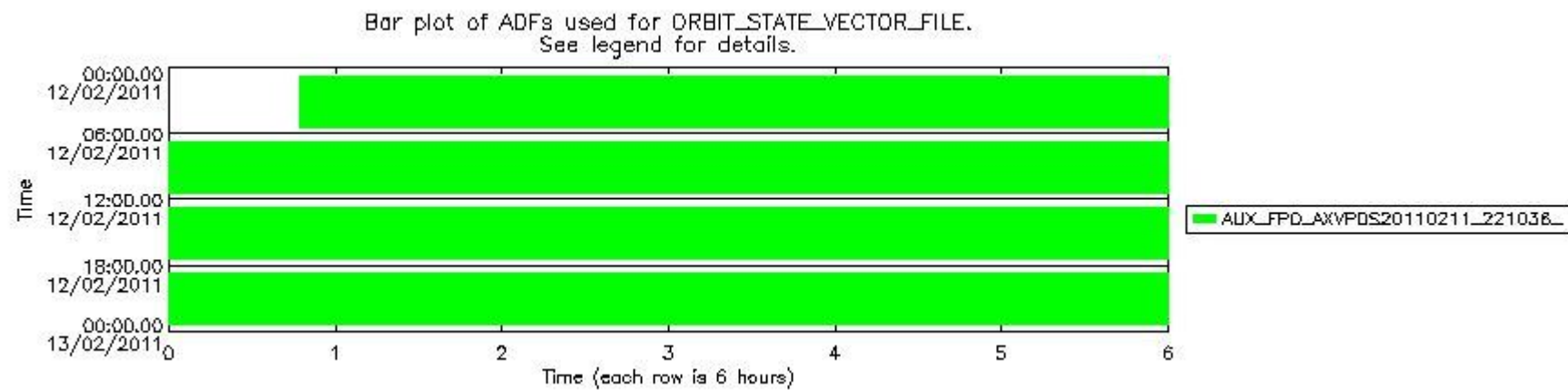
Number	ADF
0	AUX_CN0_AXVPDS20020123_121901_20020101_000000_20200101_000000
1	AUX_FPO_AXVPDS20110211_221036_20110211_195641_20110221_203018

Number	Product name	#CN0	#FPO
0	MIP_NL_0PNPDE20110212_004654_000057803099_00246_46812_2903.N1	0	1

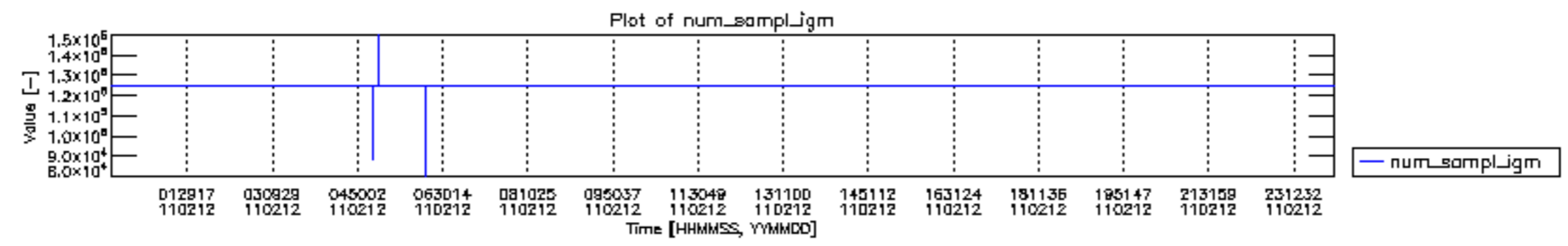
1	MIP_NL__0PNPDE20110212_022128_000045773099_00247_46813_2904.N1	0	1
2	MIP_NL__0PNPDE20110212_033714_000061373099_00248_46814_2905.N1	0	1
3	MIP_NL__0PNPDE20110212_051856_000060243099_00249_46815_2906.N1	0	1
4	MIP_NL__0PNPDK20110212_065846_000040723099_00250_46816_4280.N1	0	1
5	MIP_NL__0PNPDK20110212_080541_000060963099_00251_46817_4281.N1	0	1
6	MIP_NL__0PNPDK20110212_094539_000060333099_00252_46818_4282.N1	0	1
7	MIP_NL__0PNPDK20110212_112438_000061233099_00253_46819_4283.N1	0	1
8	MIP_NL__0PNPDK20110212_130500_000058873099_00254_46820_4284.N1	0	1
9	MIP_NL__0PNPDK20110212_144209_000060003099_00255_46821_4285.N1	0	1
10	MIP_NL__0PNPDK20110212_162112_000058763099_00256_46822_4286.N1	0	1
11	MIP_NL__0PNPDK20110212_175833_000059083099_00257_46823_4287.N1	0	1
12	MIP_NL__0PNPDK20110212_193518_000062193099_00258_46824_4288.N1	0	1
13	MIP_NL__0PNPDE20110212_211816_000042603099_00259_46825_2907.N1	0	1
14	MIP_NL__0PNPDE20110212_222808_000061423099_00259_46825_2908.N1	0	1

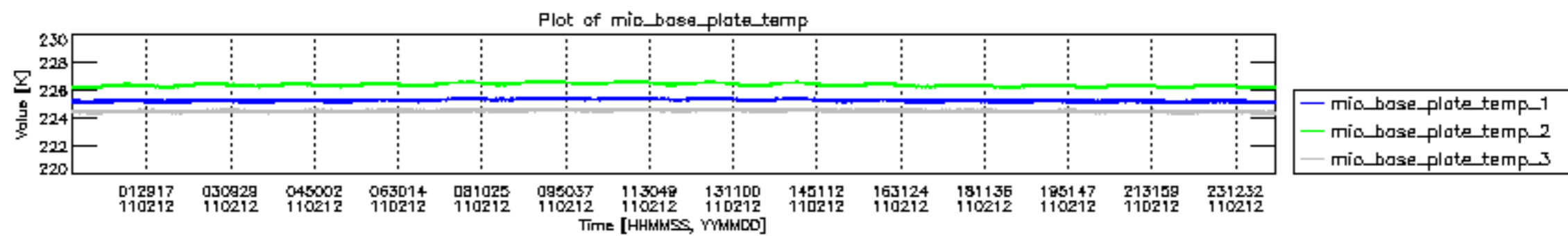


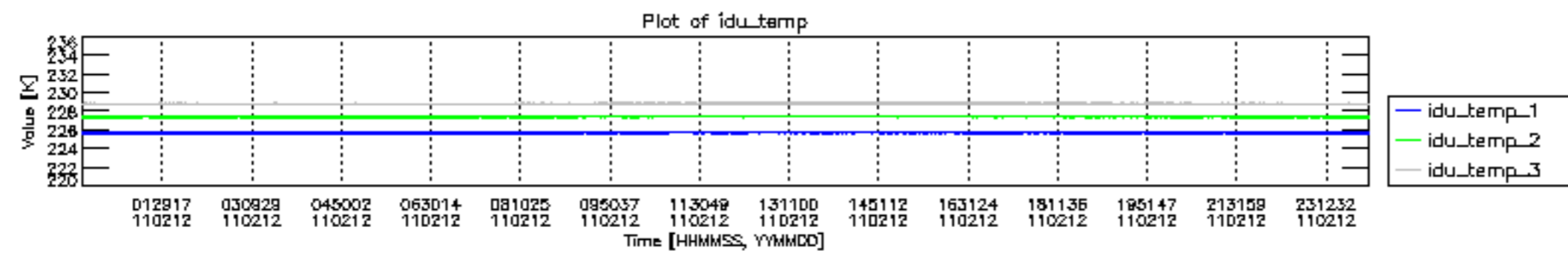
mipas_daily_report_level0_KSPT_L0_4504_N_20110212_12.PNG

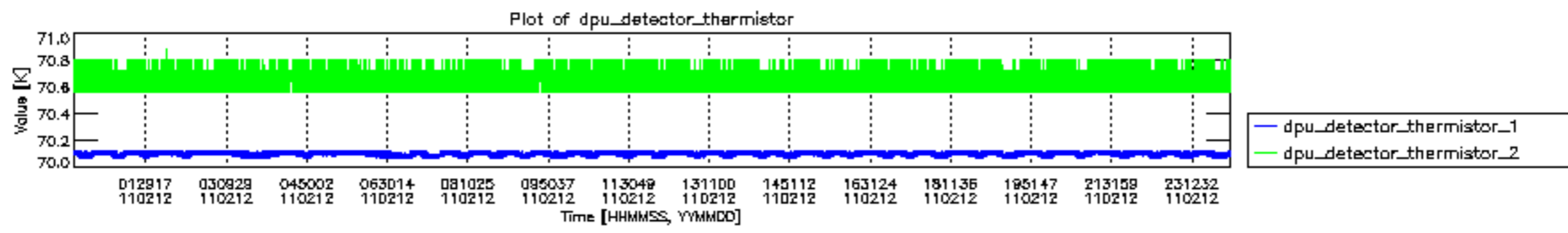


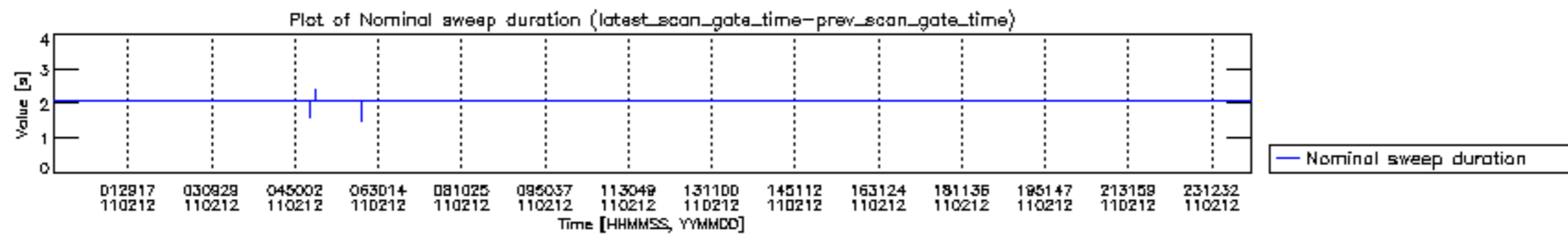
mipas_daily_report_level0_KSPT_L0_4504_N_20110212_13.PNG

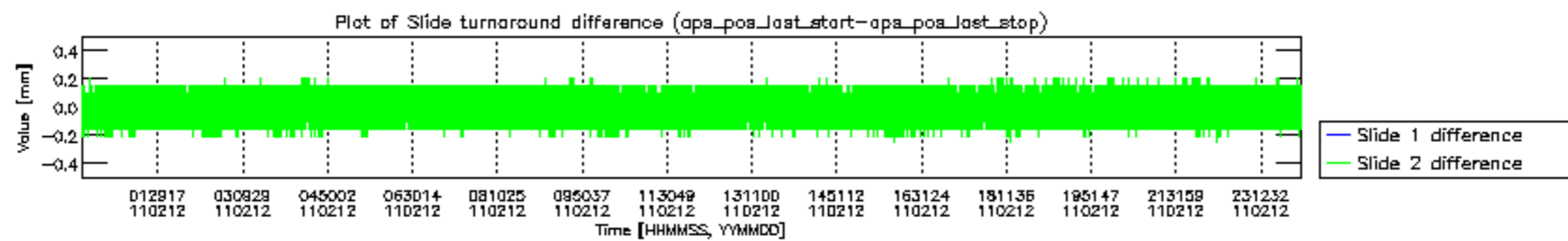


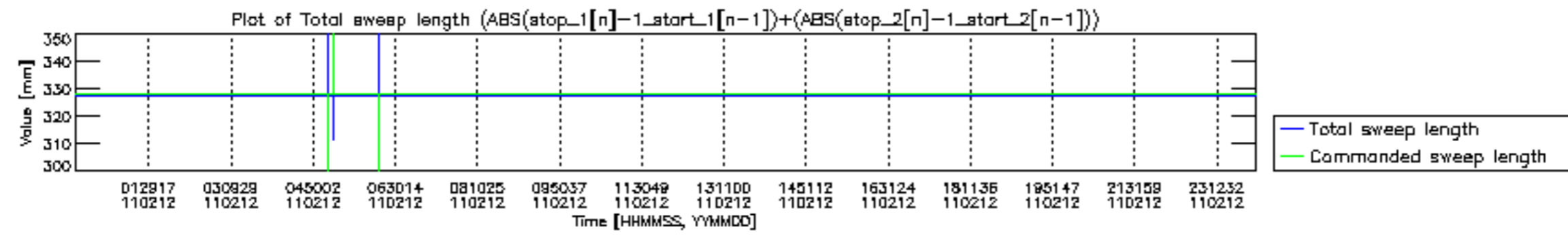


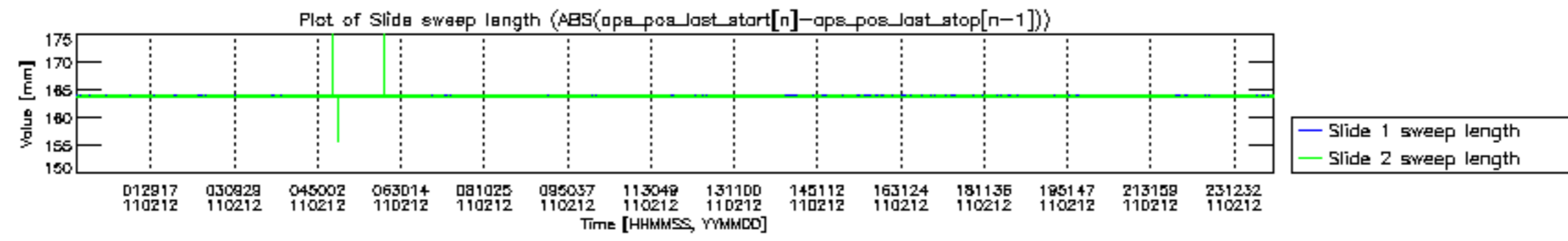


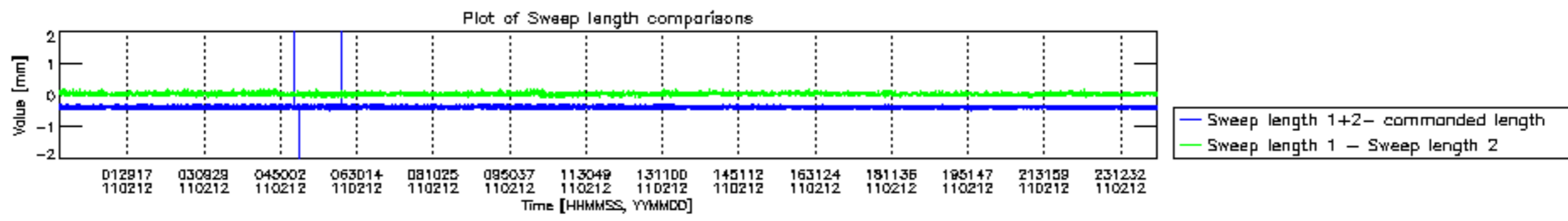


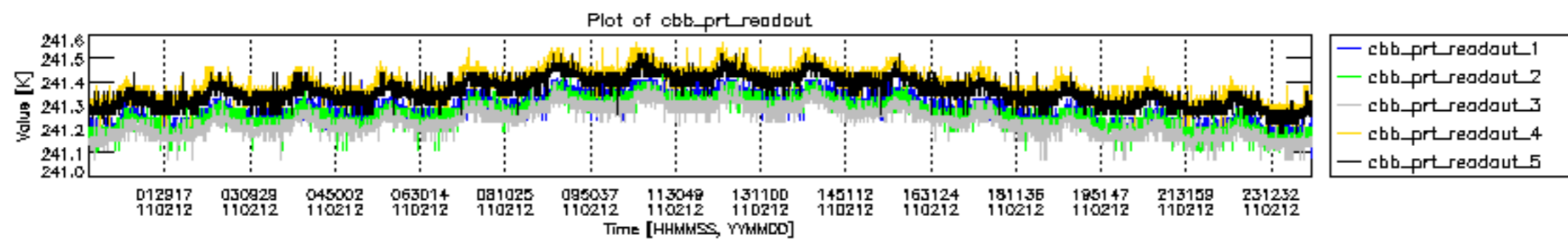


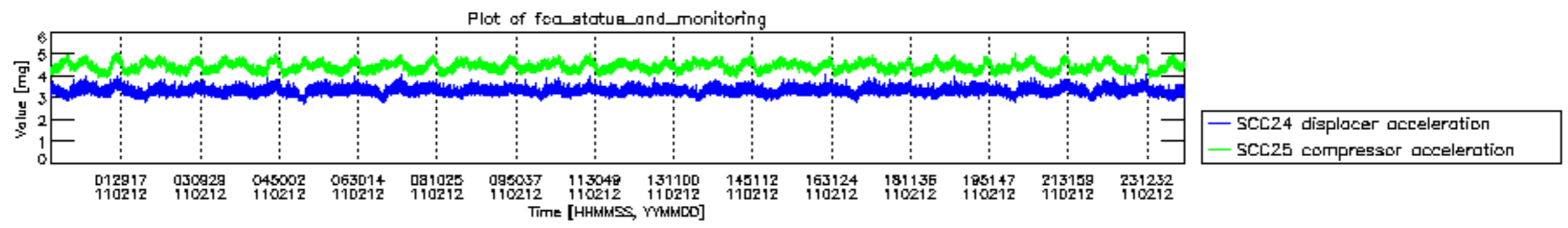












MIPNLOP_MIPSOUPAC_aux_fields_igm_cal, channel statistics plot
 Colour indicates value.

