

0. MIPAS Daily Report for level 0 products

[0.1 General Info](#)

[0.2 Instrument Operational Performance Parameters](#)

[0.3 ADF monitoring](#)

0.1 General Info

This report contains a daily analysis on parameters extracted from MIPAS level 0 data (The MIP_NL__0P product).

0.1.1 Report summary

The table below shows general characteristics of the data that are included into this report.

Item	Value
Report version	v1.6 08-11-2010
Time of report generation	15FEB2011 05:27:57
Data source version	KSPT_L0/4504-N
Processing scope for products	10FEB2011 00:00:00 to 11FEB2011 00:00:00
Start time of first product within scope	10FEB2011 00:18:09
Stop time of last product within scope	11FEB2011 01:22:35
Total number of level 0 products	16
Number of level 0 products with errors	0

0.1.2 Product Quality Indicators per product

The following table shows a summary for each product used in this report.

#	Product name	Start time	Stop time	Prod err	ISP err sign	ISP miss sign	ISP disc sign	rs sign
0	MIP_NL__0PNPDE20110210_001809_000059583099_00217_46783_2890.N1	10FEB2011 00:18:09	10FEB2011 01:57:27	0	0	0	0	0
1	MIP_NL__0PNPDE20110210_015620_000044503099_00218_46784_2891.N1	10FEB2011 01:56:20	10FEB2011 03:10:30	0	0	0	0	0
2	MIP_NL__0PNPDE20110210_030956_000061523099_00219_46785_2892.N1	10FEB2011 03:09:56	10FEB2011 04:52:28	0	0	0	0	0
3	MIP_NL__0PNPDE20110210_045155_000060803099_00220_46786_2893.N1	10FEB2011 04:51:55	10FEB2011 06:33:15	0	0	0	0	0
4	MIP_NL__0PNPDK20110210_063241_000040513099_00221_46787_4263.N1	10FEB2011 06:32:41	10FEB2011 07:40:12	0	0	0	0	0
5	MIP_NL__0PNPDK20110210_073913_000061503099_00222_46788_4264.N1	10FEB2011 07:39:13	10FEB2011 09:21:43	0	0	0	0	0
6	MIP_NL__0PNPDK20110210_092016_000059933099_00223_46789_4265.N1	10FEB2011 09:20:16	10FEB2011 11:00:09	0	0	0	0	0
7	MIP_NL__0PNPDK20110210_105829_000060503099_00224_46790_4266.N1	10FEB2011 10:58:29	10FEB2011 12:39:19	0	0	0	0	0
8	MIP_NL__0PNPDK20110210_123738_000058813099_00225_46791_4267.N1	10FEB2011 12:37:38	10FEB2011 14:15:39	0	0	0	0	0
9	MIP_NL__0PNPDK20110210_141401_000059723099_00226_46792_4268.N1	10FEB2011 14:14:01	10FEB2011 15:53:33	0	0	0	0	0
10	MIP_NL__0PNPDK20110210_155245_000059493099_00227_46793_4269.N1	10FEB2011 15:52:45	10FEB2011 17:31:54	0	0	0	0	0
11	MIP_NL__0PNPDK20110210_173111_000059833099_00228_46794_4270.N1	10FEB2011 17:31:11	10FEB2011 19:10:53	0	0	0	0	0
12	MIP_NL__0PNPDK20110210_190907_000059683099_00229_46795_4271.N1	10FEB2011 19:09:07	10FEB2011 20:48:35	0	0	0	0	0
13	MIP_NL__0PNPDE20110210_204705_000044663099_00230_46796_2894.N1	10FEB2011 20:47:05	10FEB2011 22:01:31	0	0	0	0	0
14	MIP_NL__0PNPDE20110210_220025_000061373099_00230_46796_2895.N1	10FEB2011 22:00:25	10FEB2011 23:42:42	0	0	0	0	0
15	MIP_NL__0PNPDE20110210_234135_000060603099_00231_46797_2896.N1	10FEB2011 23:41:35	11FEB2011 01:22:35	0	0	0	0	0

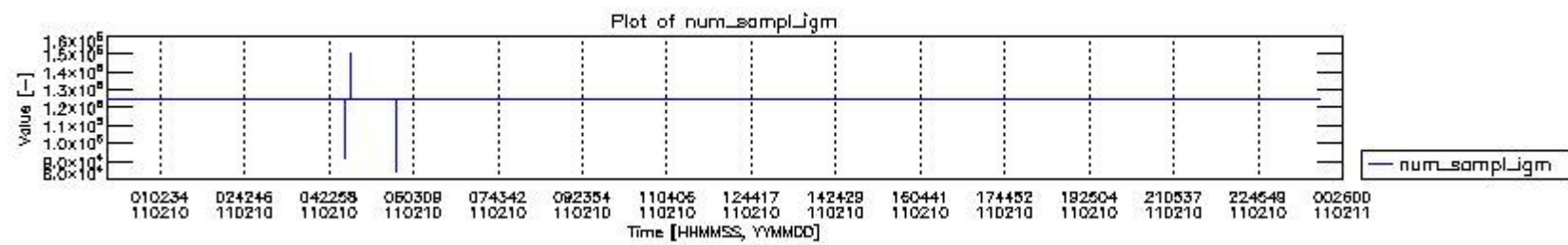
0.2 Instrument Operational Performance Parameters

The following plots give an overview of various instrument parameters for this day. The instrument parameters are part of the auxiliary data field within the source packets of the MIP_NL__0P product. The auxiliary data is normally included twice per interferogram. Note that only the first packet is currently included in monitoring.

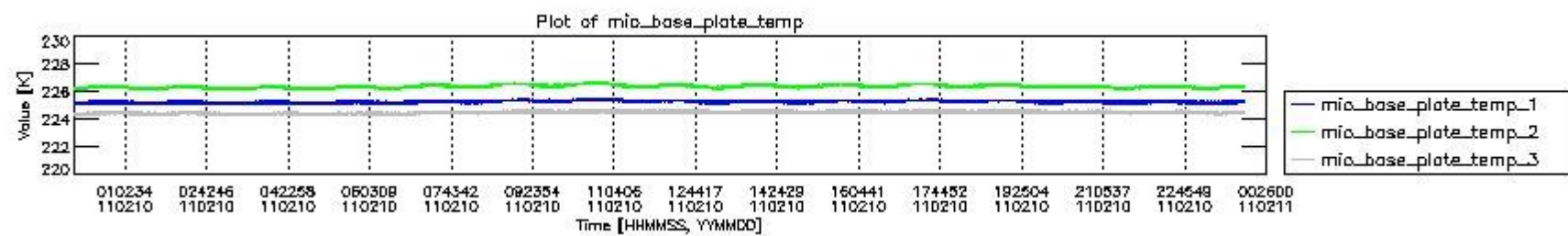
The following table shows the counts of various interferogram number of samples

Number of igm samples	Count [#]	Count [%]
83784	1	0.0024058124
92110	1	0.0024058124

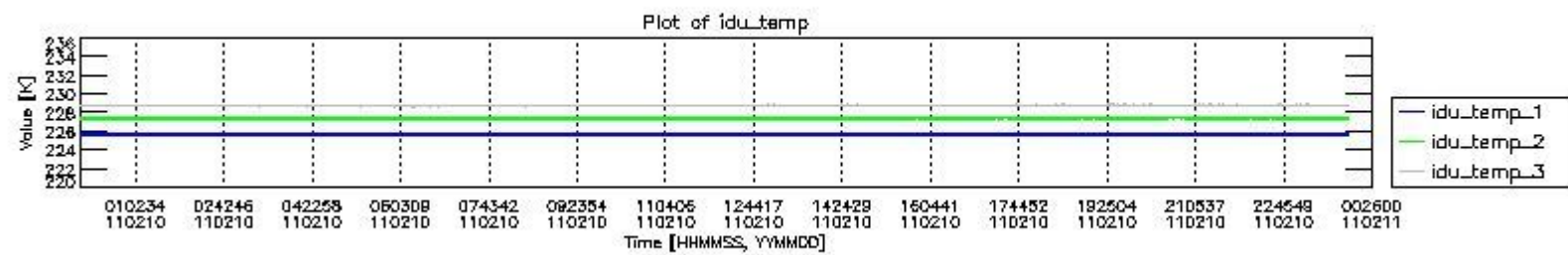
94226	1	0.0024058124
98389	1	0.0024058124
114358	1	0.0024058124
118521	1	0.0024058124
124800	38606	92.878795
124803	2951	7.0995525
127456	1	0.0024058124
147588	1	0.0024058124
150244	1	0.0024058124



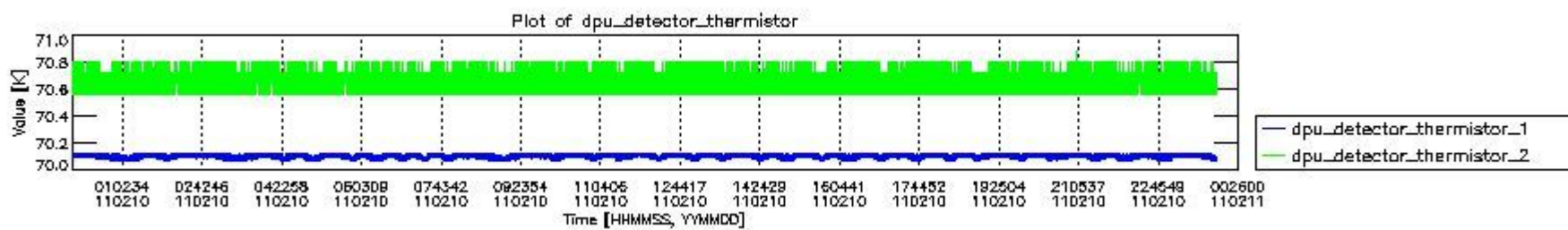
mipas_daily_report_level0_KSPT_L0_4504_N_20110210_0.PNG



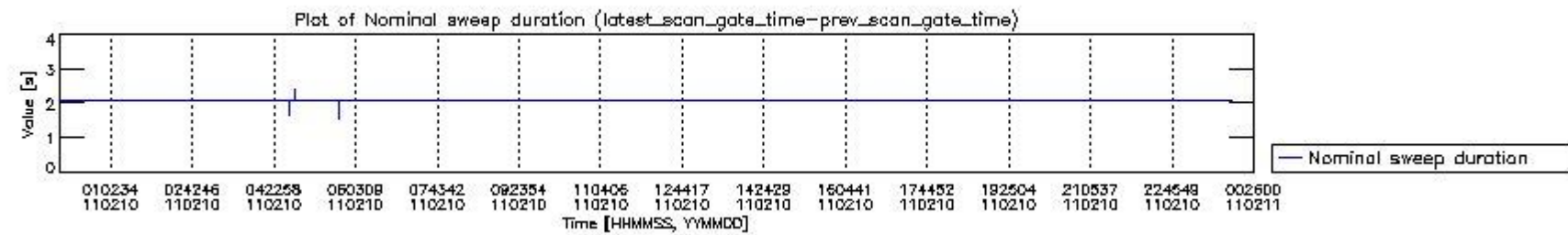
mipas_daily_report_level0_KSPT_L0_4504_N_20110210_1.PNG



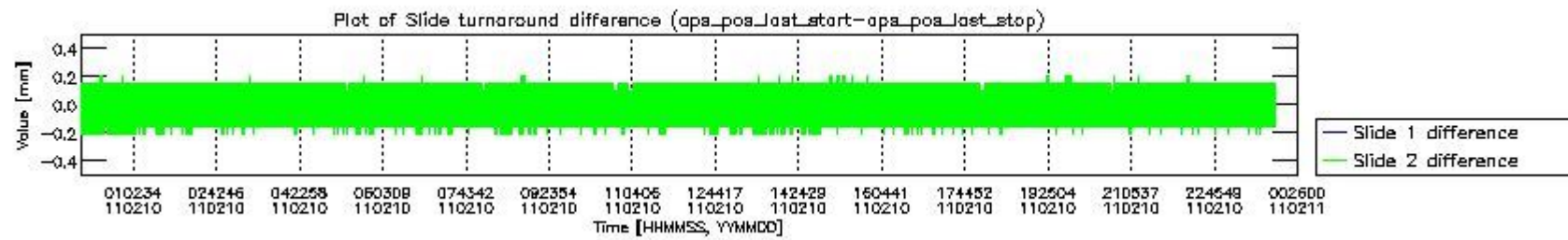
mipas_daily_report_level0_KSPT_L0_4504_N_20110210_2.PNG



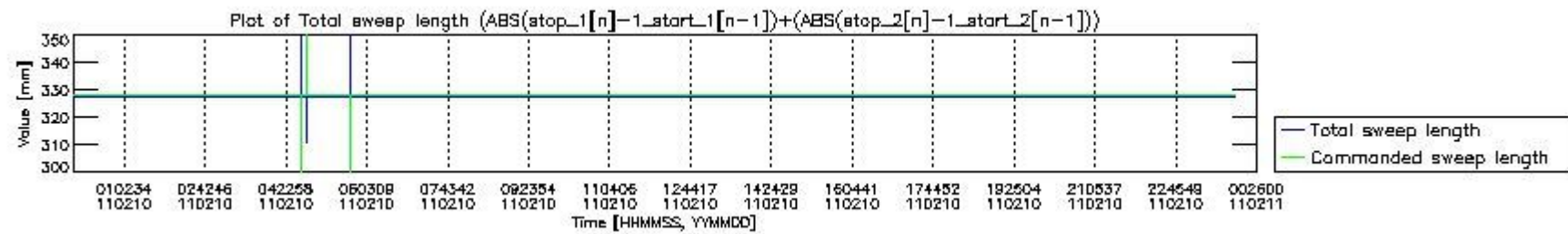
mipas_daily_report_level0_KSPT_L0_4504_N_20110210_3.PNG



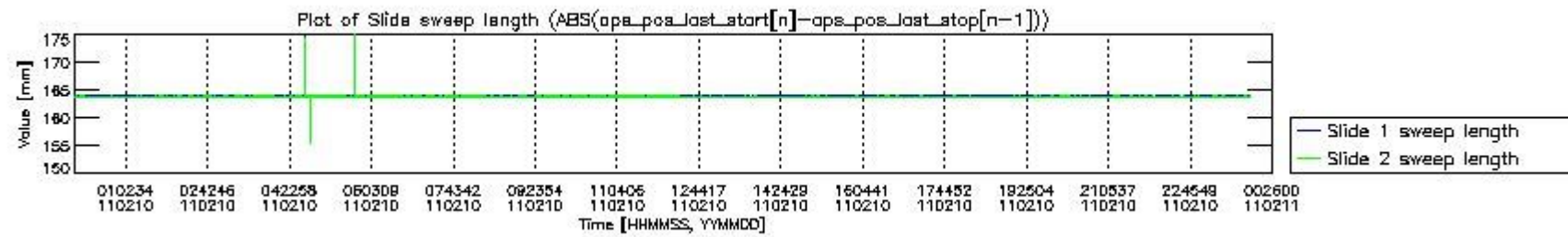
mipas_daily_report_level0_KSPT_L0_4504_N_20110210_4.PNG



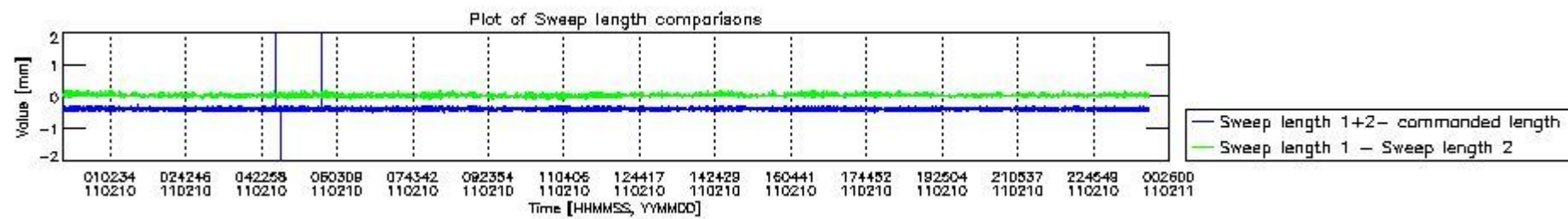
mipas_daily_report_level0_KSPT_L0_4504_N_20110210_5.PNG



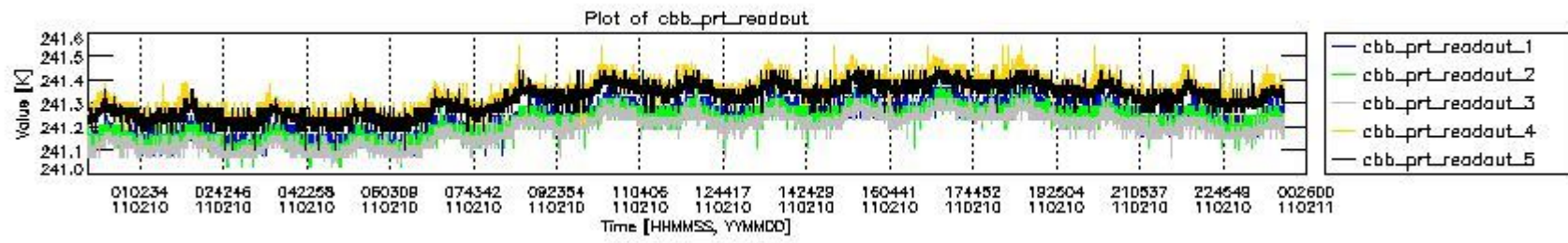
mipas_daily_report_level0_KSPT_L0_4504_N_20110210_6.PNG



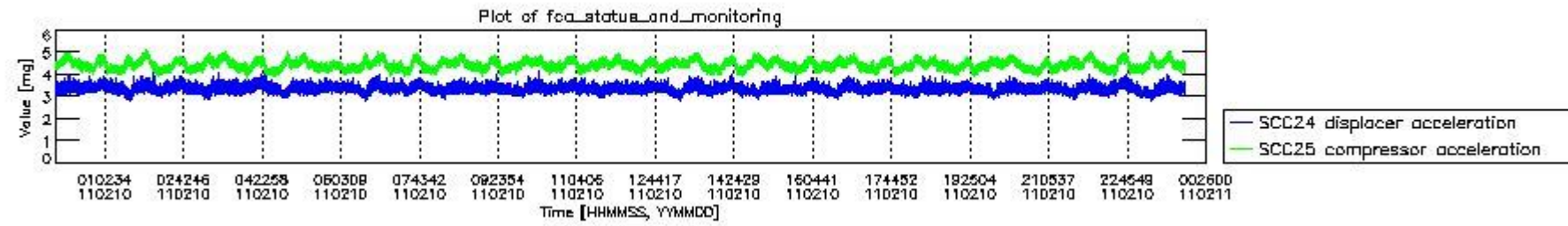
mipas_daily_report_level0_KSPT_L0_4504_N_20110210_7.PNG



mipas_daily_report_level0_KSPT_L0_4504_N_20110210_8.PNG



mipas_daily_report_level0_KSPT_L0_4504_N_20110210_9.PNG

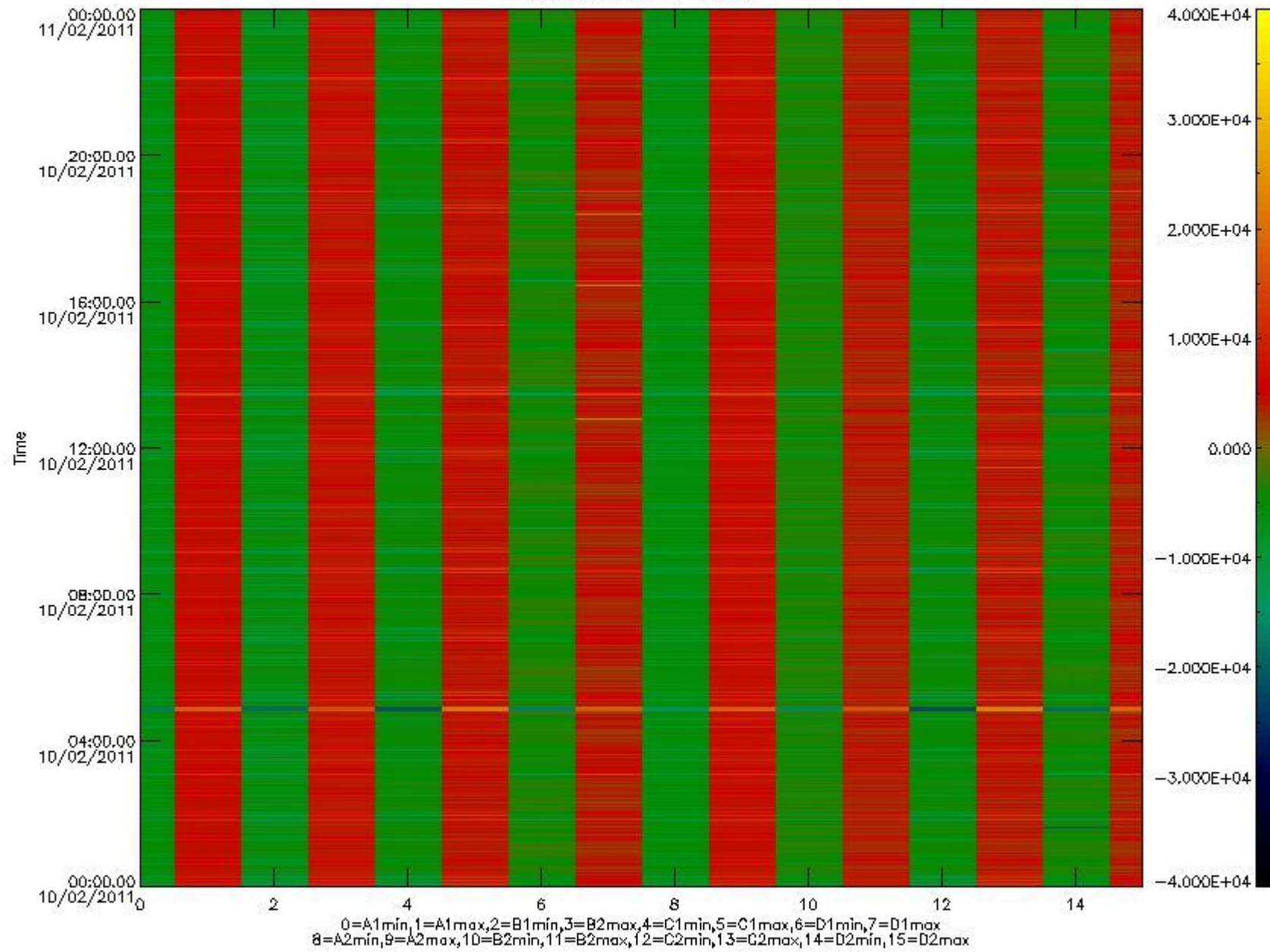


mipas_daily_report_level0_KSPT_L0_4504_N_20110210_10.PNG

The following table shows channel statistics for all channels for this day.

Channel	Min	Max	ADC
A1	-17370	18348	16bit
B1	-18650	16239	16bit
C1	-22141	21455	16bit
D1	-20488	32767	16bit
A2	-15086	18477	16bit
B2	-16642	16395	16bit
C2	-22473	24168	16bit
D2	-32768	23023	16bit

MIPNLOP_MIPSOUPAC_aux_fields_igm_cal, channel statistics plot
Colour indicates value.



mipas_daily_report_level0_KSPT_L0_4504_N_20110210_11.PNG

0.3 ADF monitoring

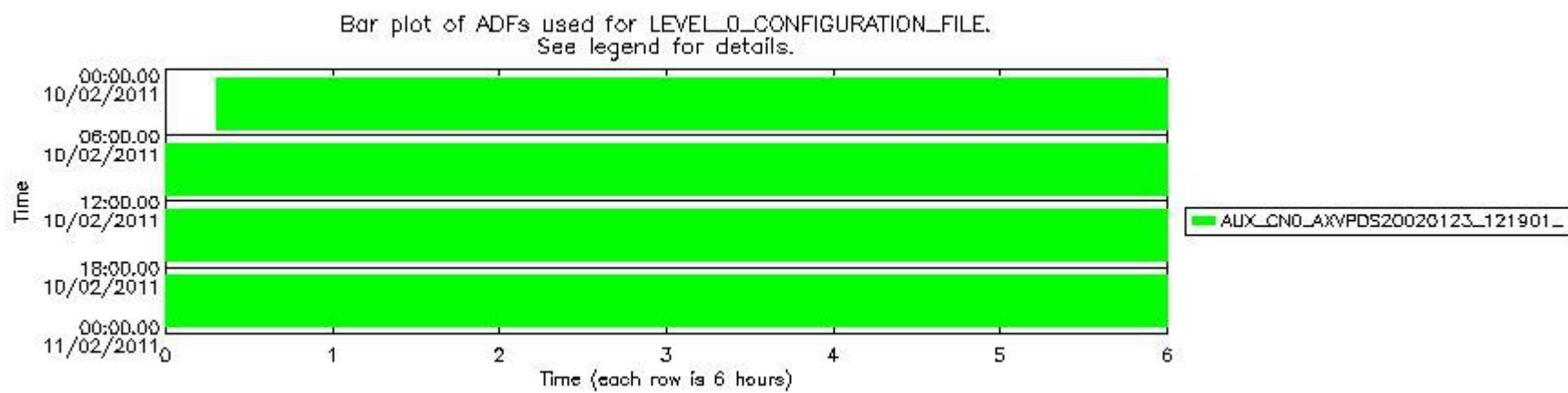
The use of ADFs is shown in two ways:

1. By means of two tables that can be used to find the ADF used for a specific product.
2. By means of plots that show changes in ADF using colours.

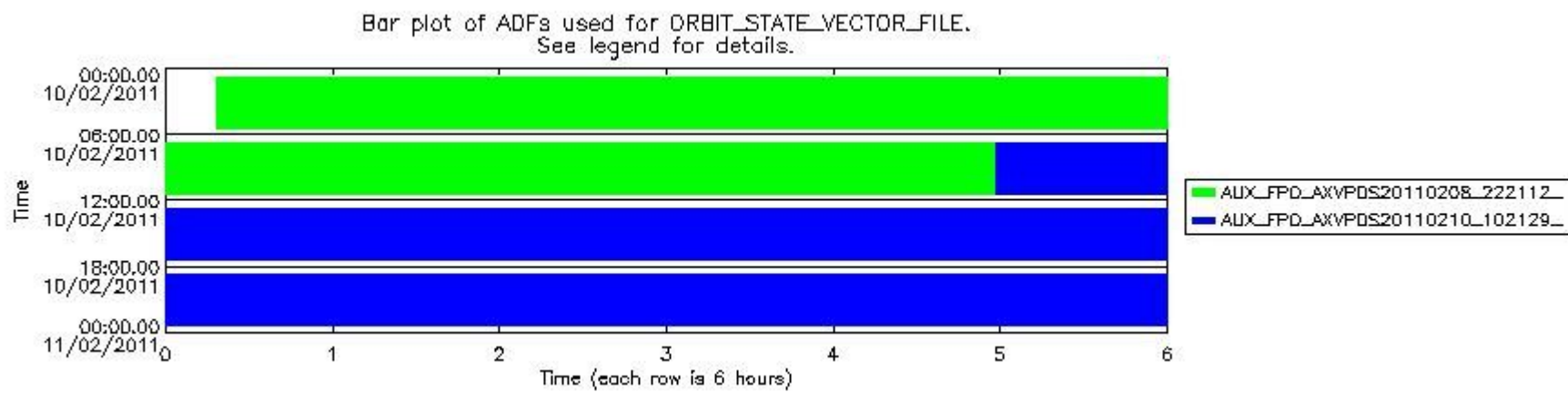
Number	ADF
0	AUX_CN0_AXVPDS20020123_121901_20020101_000000_20200101_000000
1	AUX_FPO_AXVPDS20110208_222112_20110208_182625_20110218_204016
2	AUX_FPO_AXVPDS20110210_102129_20110209_192955_20110219_200332

Number	Product name	#CN0	#FPO
--------	--------------	------	------

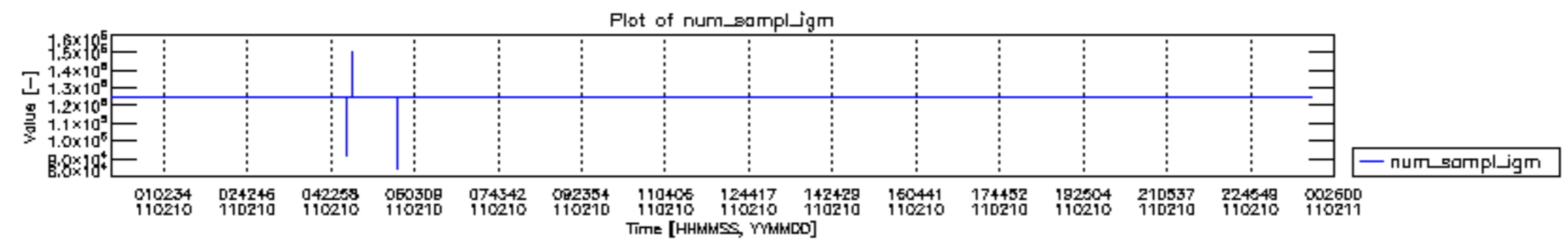
0	MIP_NL__0PNPDE20110210_001809_000059583099_00217_46783_2890.N1	0	1
1	MIP_NL__0PNPDE20110210_015620_000044503099_00218_46784_2891.N1	0	1
2	MIP_NL__0PNPDE20110210_030956_000061523099_00219_46785_2892.N1	0	1
3	MIP_NL__0PNPDE20110210_045155_000060803099_00220_46786_2893.N1	0	1
4	MIP_NL__0PNPDK20110210_063241_000040513099_00221_46787_4263.N1	0	1
5	MIP_NL__0PNPDK20110210_073913_000061503099_00222_46788_4264.N1	0	1
6	MIP_NL__0PNPDK20110210_092016_000059933099_00223_46789_4265.N1	0	1
7	MIP_NL__0PNPDK20110210_105829_000060503099_00224_46790_4266.N1	0	2
8	MIP_NL__0PNPDK20110210_123738_000058813099_00225_46791_4267.N1	0	2
9	MIP_NL__0PNPDK20110210_141401_000059723099_00226_46792_4268.N1	0	2
10	MIP_NL__0PNPDK20110210_155245_000059493099_00227_46793_4269.N1	0	2
11	MIP_NL__0PNPDK20110210_173111_000059833099_00228_46794_4270.N1	0	2
12	MIP_NL__0PNPDK20110210_190907_000059683099_00229_46795_4271.N1	0	2
13	MIP_NL__0PNPDE20110210_204705_000044663099_00230_46796_2894.N1	0	2
14	MIP_NL__0PNPDE20110210_220025_000061373099_00230_46796_2895.N1	0	2
15	MIP_NL__0PNPDE20110210_234135_000060603099_00231_46797_2896.N1	0	2

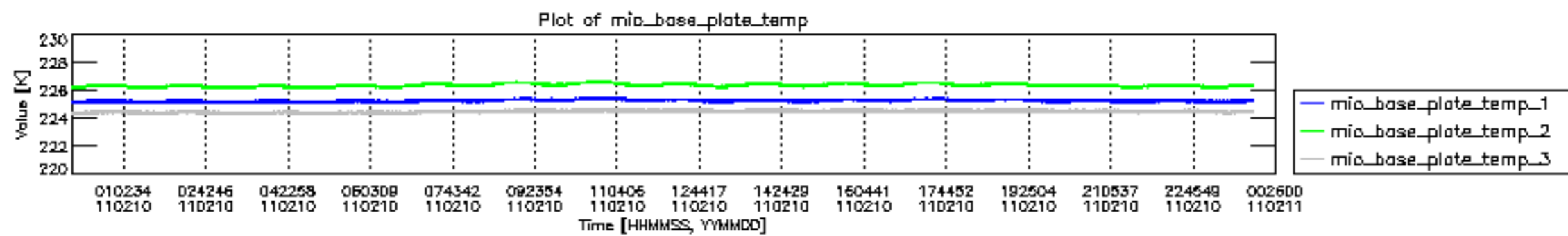


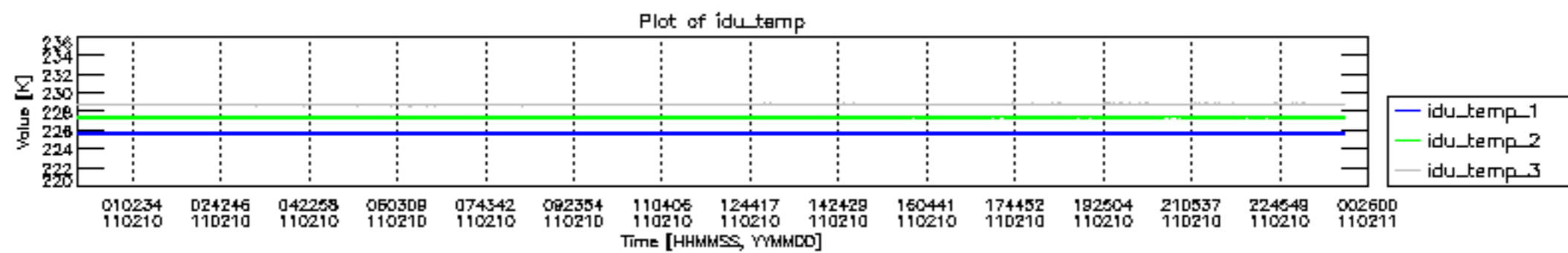
mipas_daily_report_level0_KSPT_L0_4504_N_20110210_12.PNG

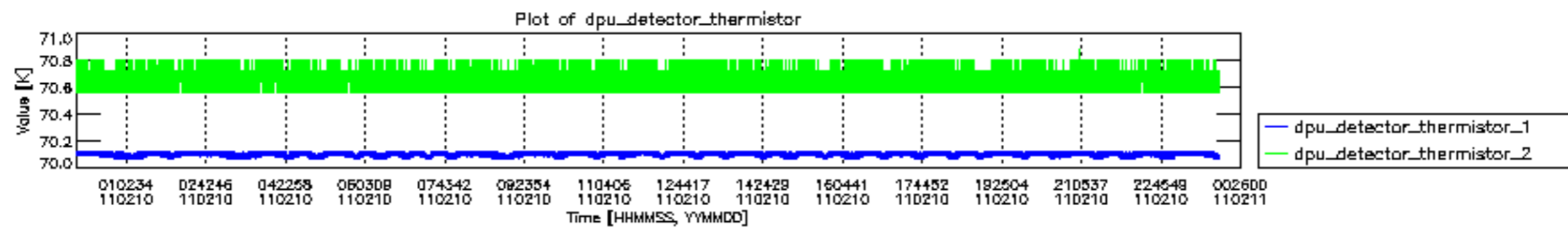


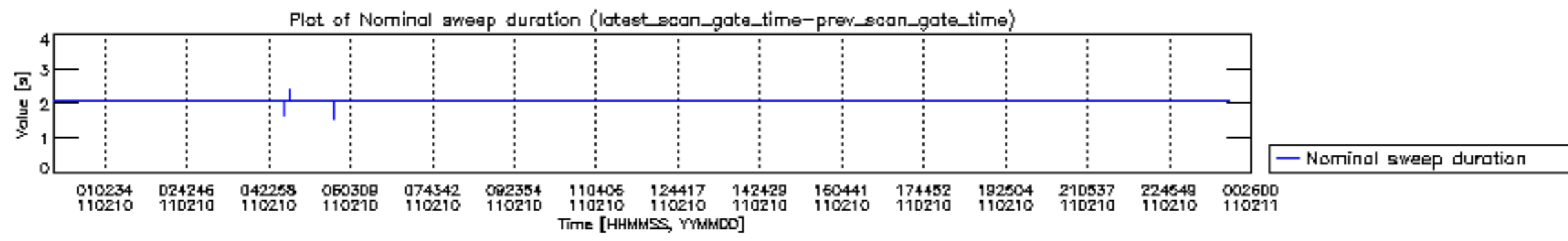
mipas_daily_report_level0_KSPT_L0_4504_N_20110210_13.PNG

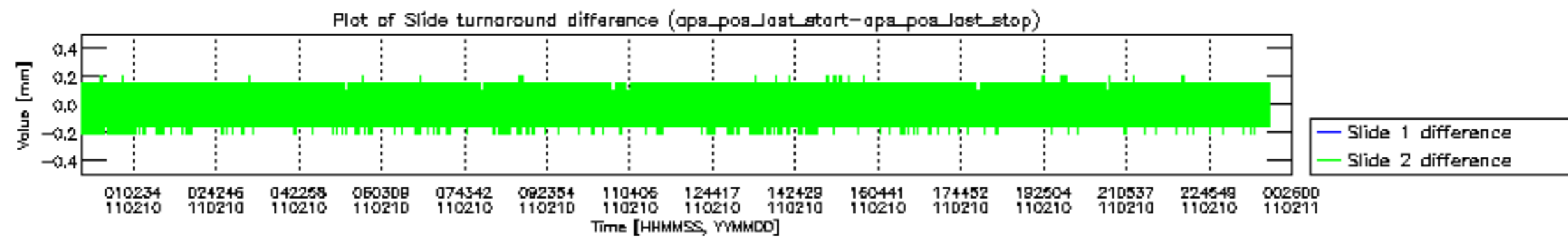


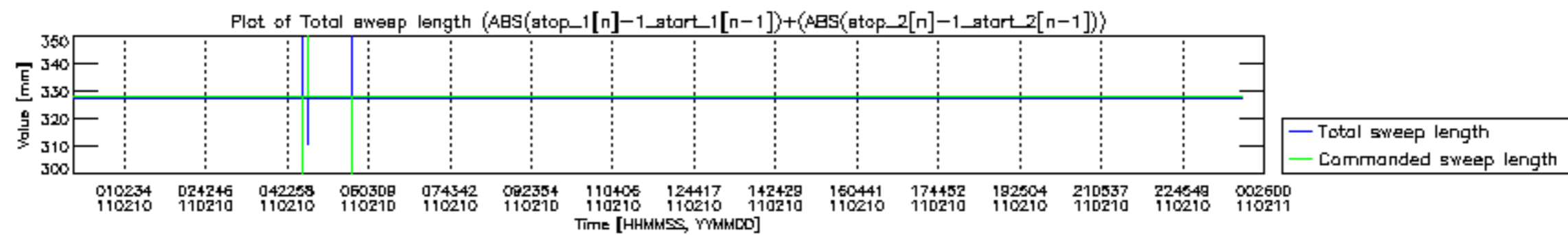


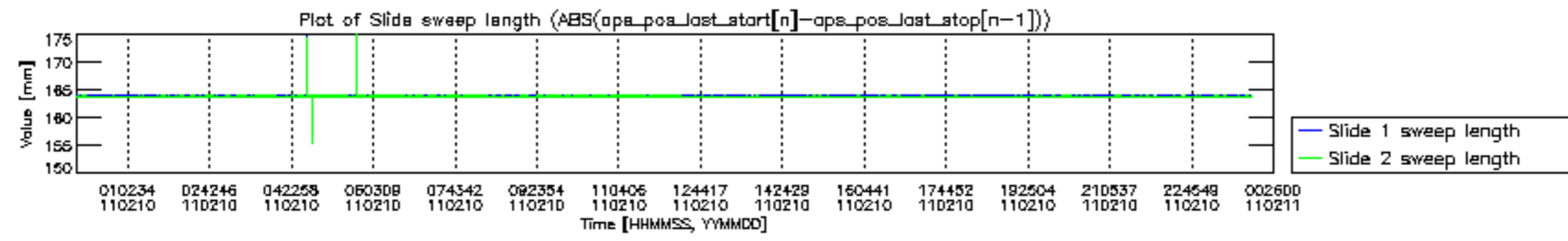


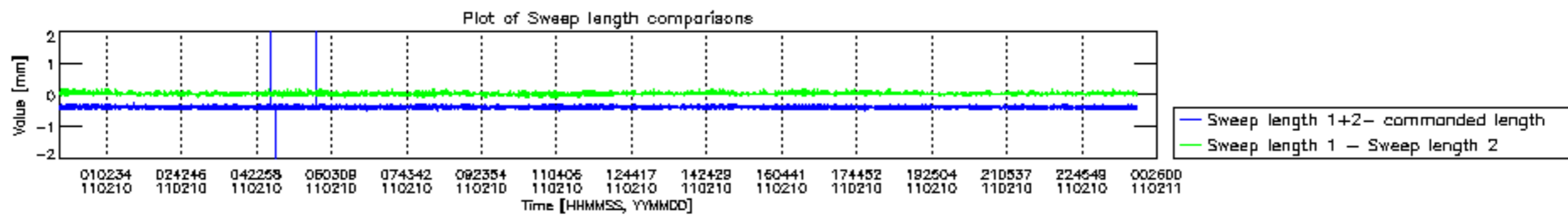


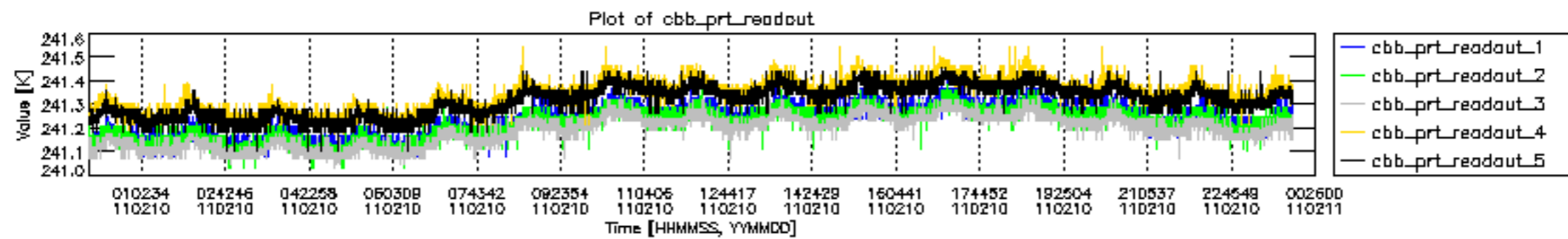


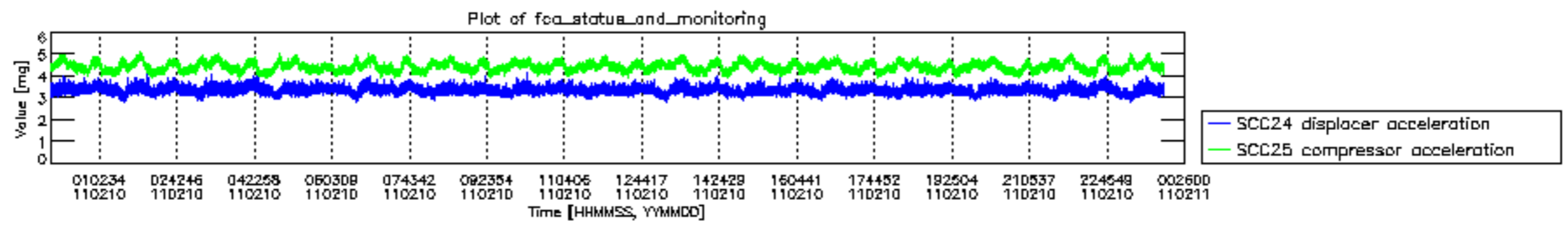












MIPNLOP_MIPSOUPAC_aux_fields_igm_cal, channel statistics plot
 Colour indicates value.

