

## 0. MIPAS Daily Report for level 0 products

### [0.1 General Info](#)

### [0.2 Instrument Operational Performance Parameters](#)

### [0.3 ADF monitoring](#)

## 0.1 General Info

This report contains a daily analysis on parameters extracted from MIPAS level 0 data (The MIP\_NL\_\_0P product).

### 0.1.1 Report summary

The table below shows general characteristics of the data that are included into this report.

Item	Value
Report version	v1.6 08-11-2010
Time of report generation	13FEB2011 05:26:11
Data source version	KSPT_L0/4504-N
Processing scope for products	08FEB2011 00:00:00 to 09FEB2011 00:00:00
Start time of first product within scope	08FEB2011 01:30:42
Stop time of last product within scope	09FEB2011 00:57:49
Total number of level 0 products	15
Number of level 0 products with errors	0

### 0.1.2 Product Quality Indicators per product

The following table shows a summary for each product used in this report.

#	Product name	Start time	Stop time	Prod err	ISP err sign	ISP miss sign	ISP disc sign	rs sign
0	MIP_NL__OPNPDE20110208_013042_000044103099_00189_46755_2876.N1	08FEB2011 01:30:42	08FEB2011 02:44:12	0	0	0	0	0
1	MIP_NL__OPNPDE20110208_024341_000061423099_00190_46756_2877.N1	08FEB2011 02:43:41	08FEB2011 04:26:02	0	0	0	0	0
2	MIP_NL__OPNPDE20110208_042529_000060353099_00191_46757_2878.N1	08FEB2011 04:25:29	08FEB2011 06:06:04	0	0	0	0	0
3	MIP_NL__OPNPDK20110208_060530_000041223099_00192_46758_4242.N1	08FEB2011 06:05:30	08FEB2011 07:14:12	0	0	0	0	0
4	MIP_NL__OPNPDK20110208_071314_000061423099_00193_46759_4243.N1	08FEB2011 07:13:14	08FEB2011 08:55:36	0	0	0	0	0
5	MIP_NL__OPNPDK20110208_085410_000060103099_00194_46760_4244.N1	08FEB2011 08:54:10	08FEB2011 10:34:20	0	0	0	0	0
6	MIP_NL__OPNPDK20110208_103246_000060003099_00195_46761_4245.N1	08FEB2011 10:32:46	08FEB2011 12:12:45	0	0	0	0	0
7	MIP_NL__OPNPDK20110208_121141_000058683099_00196_46762_4246.N1	08FEB2011 12:11:41	08FEB2011 13:49:29	0	0	0	0	0
8	MIP_NL__OPNPDK20110208_134748_000060603099_00197_46763_4247.N1	08FEB2011 13:47:48	08FEB2011 15:28:49	0	0	0	0	0
9	MIP_NL__OPNPDK20110208_152752_000059243099_00198_46764_4248.N1	08FEB2011 15:27:52	08FEB2011 17:06:37	0	0	0	0	0
10	MIP_NL__OPNPDK20110208_170555_000058893099_00199_46765_4249.N1	08FEB2011 17:05:55	08FEB2011 18:44:04	0	0	0	0	0
11	MIP_NL__OPNPDK20110208_184303_000059373099_00200_46766_4250.N1	08FEB2011 18:43:03	08FEB2011 20:22:00	0	0	0	0	0
12	MIP_NL__OPNPDE20110208_202028_000044453099_00201_46767_2879.N1	08FEB2011 20:20:28	08FEB2011 21:34:33	0	0	0	0	0
13	MIP_NL__OPNPDE20110208_213228_000062233099_00201_46767_2880.N1	08FEB2011 21:32:28	08FEB2011 23:16:11	0	0	0	0	0
14	MIP_NL__OPNPDE20110208_231504_000061653099_00202_46768_2881.N1	08FEB2011 23:15:04	09FEB2011 00:57:49	0	0	0	0	0

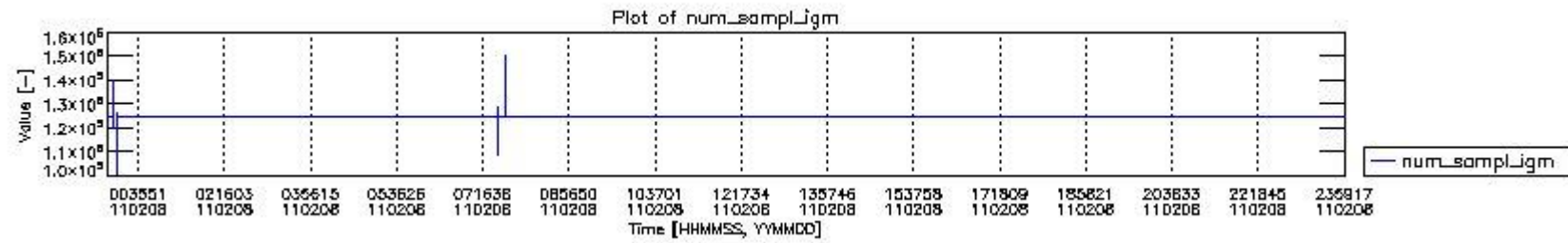
## 0.2 Instrument Operational Performance Parameters

The following plots give an overview of various instrument parameters for this day. The instrument parameters are part of the auxiliary data field within the source packets of the MIP\_NL\_\_0P product. The auxiliary data is normally included twice per interferogram. Note that only the first packet is currently included in monitoring.

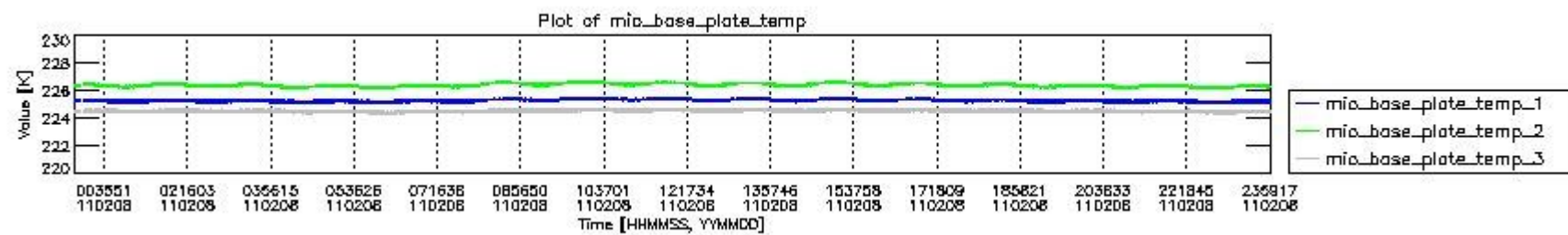
The following table shows the counts of various interferogram number of samples

Number of igm samples	Count [#]	Count [%]
100409	1	0.0024087679
108425	1	0.0024087679
112182	1	0.0024087679

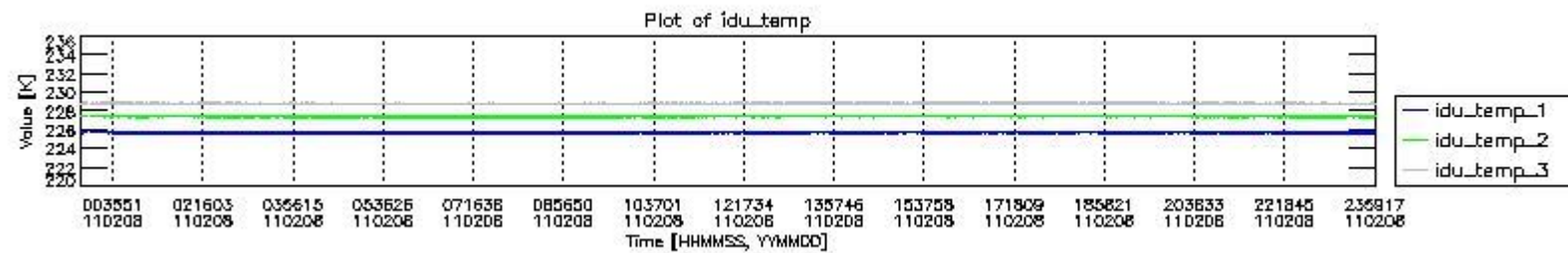
120097	1	0.0024087679
124800	38731	93.293990
124803	2772	6.6771047
125661	1	0.0024087679
126522	1	0.0024087679
127531	1	0.0024087679
128557	1	0.0024087679
135526	1	0.0024087679
140229	1	0.0024087679
147663	1	0.0024087679
150394	1	0.0024087679



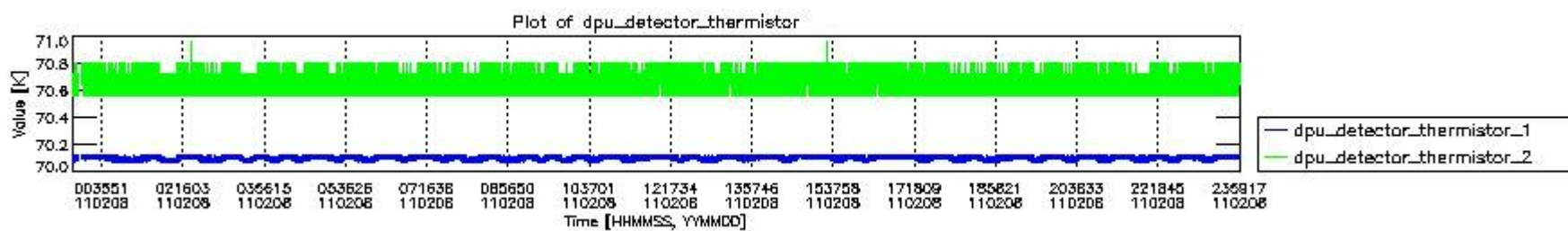
mipas\_daily\_report\_level0\_KSPT\_L0\_4504\_N\_20110208\_0.PNG



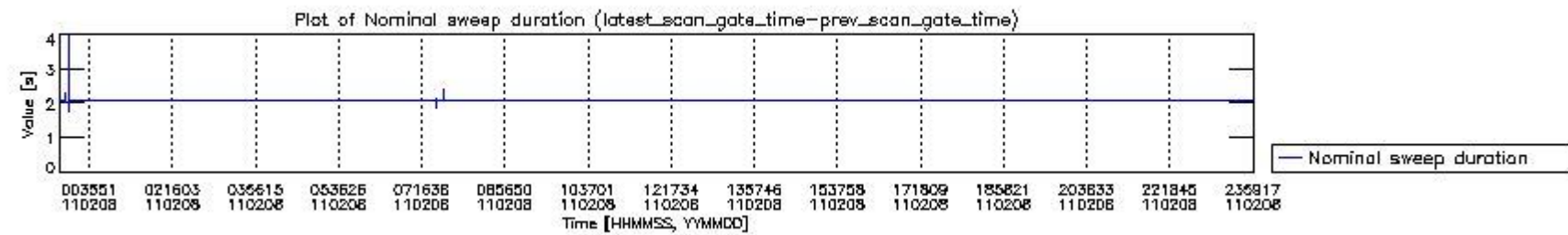
mipas\_daily\_report\_level0\_KSPT\_L0\_4504\_N\_20110208\_1.PNG



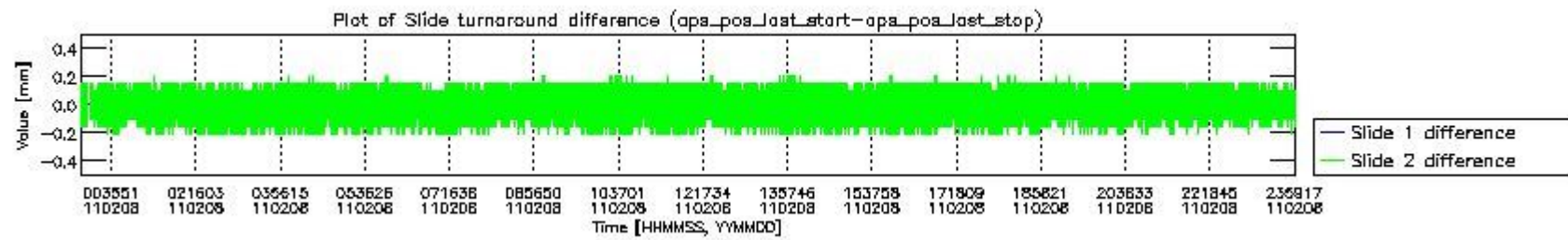
mipas\_daily\_report\_level0\_KSPT\_L0\_4504\_N\_20110208\_2.PNG



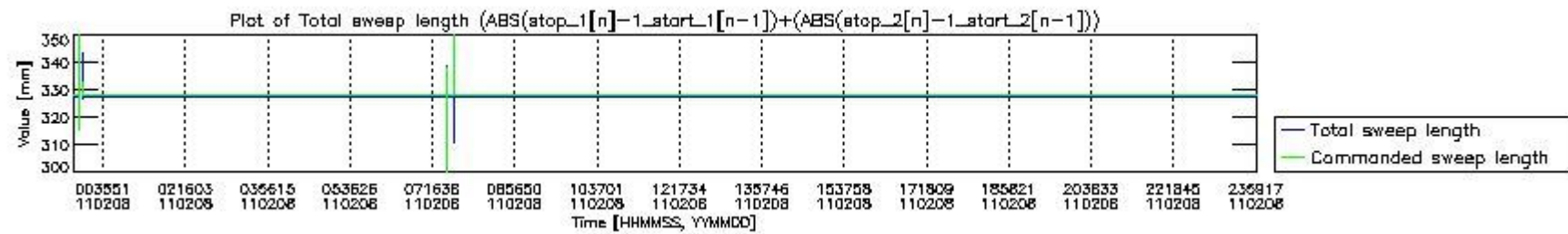
mipas\_daily\_report\_level0\_KSPT\_L0\_4504\_N\_20110208\_3.PNG



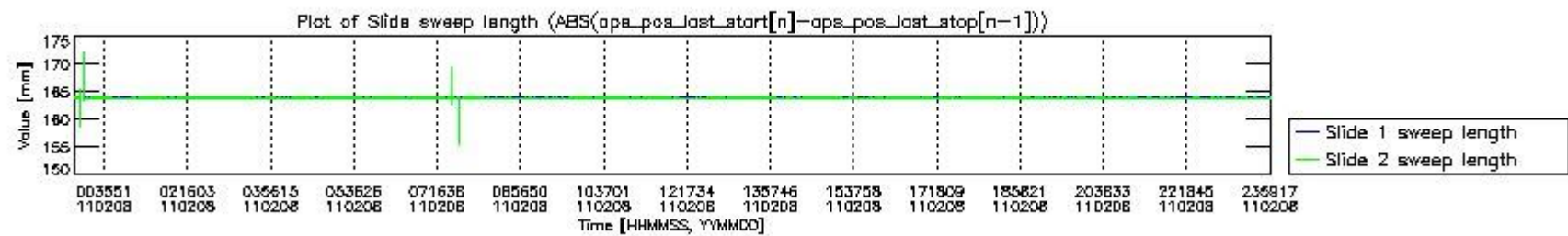
mipas\_daily\_report\_level0\_KSPT\_L0\_4504\_N\_20110208\_4.PNG



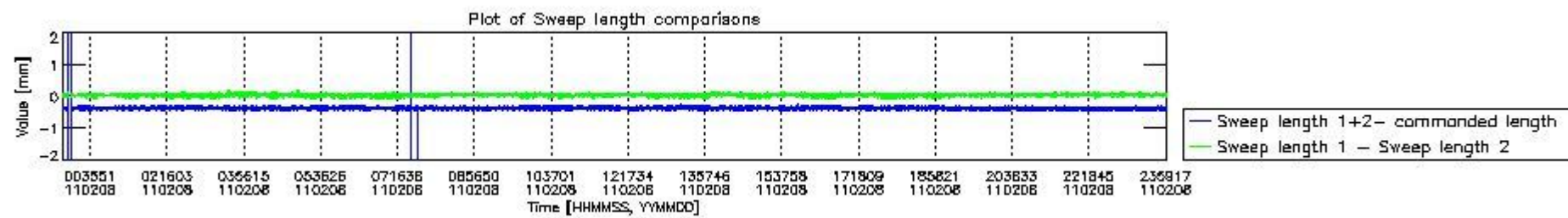
mipas\_daily\_report\_level0\_KSPT\_L0\_4504\_N\_20110208\_5.PNG



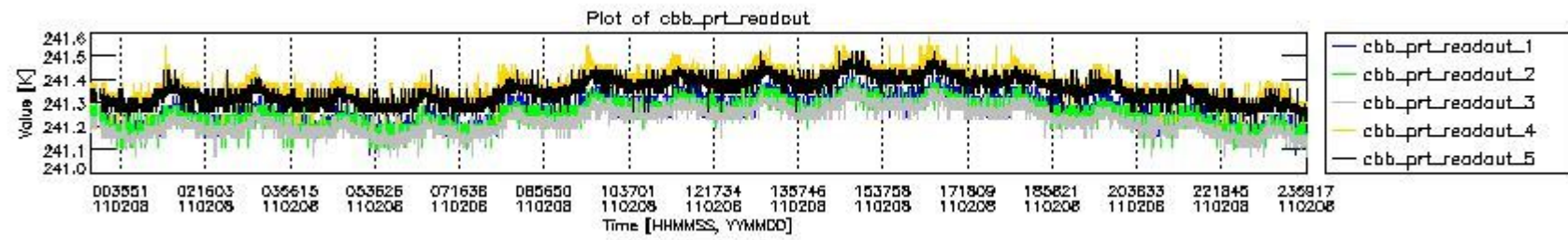
mipas\_daily\_report\_level0\_KSPT\_L0\_4504\_N\_20110208\_6.PNG



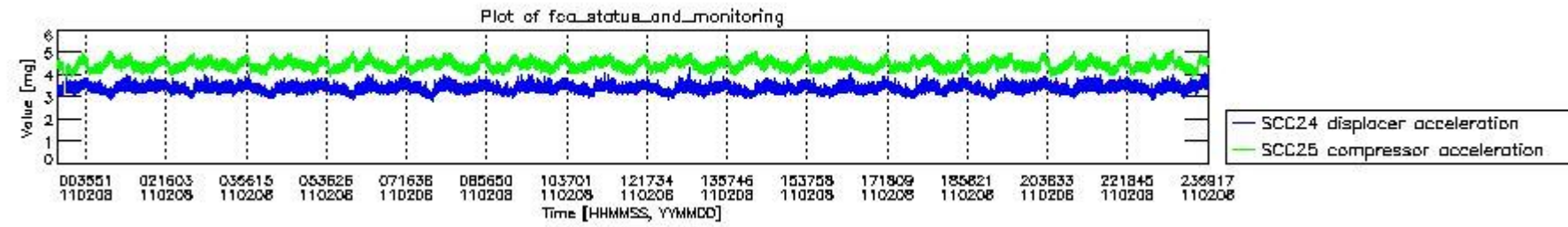
mipas\_daily\_report\_level0\_KSPT\_L0\_4504\_N\_20110208\_7.PNG



mipas\_daily\_report\_level0\_KSPT\_L0\_4504\_N\_20110208\_8.PNG



mipas\_daily\_report\_level0\_KSPT\_L0\_4504\_N\_20110208\_9.PNG



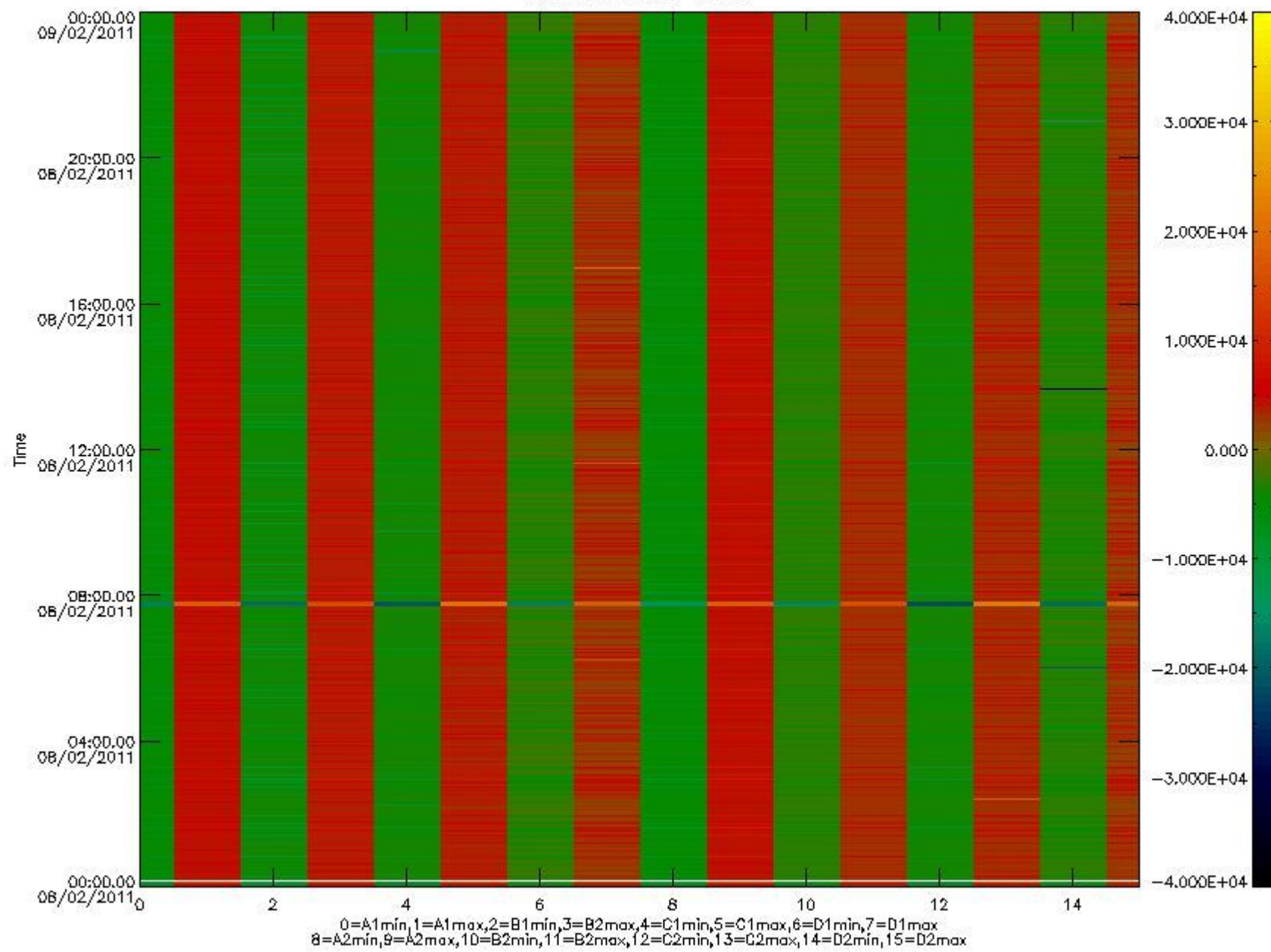
mipas\_daily\_report\_level0\_KSPT\_L0\_4504\_N\_20110208\_10.PNG

The following table shows channel statistics for all channels for this day.

Channel	Min	Max	ADC
A1	-17398	18405	16bit
B1	-18693	16273	16bit
C1	-24467	21533	16bit
D1	-17693	32767	16bit
A2	-15106	18515	16bit
B2	-16693	16434	16bit
C2	-22591	24286	16bit
D2	-32768	19253	16bit



MIPNLOP\_MIPSOUPAC\_aux\_fields\_igm\_cal, channel statistics plot  
Colour indicates value.



mipas\_daily\_report\_level0\_KSPT\_L0\_4504\_N\_20110208\_11.PNG

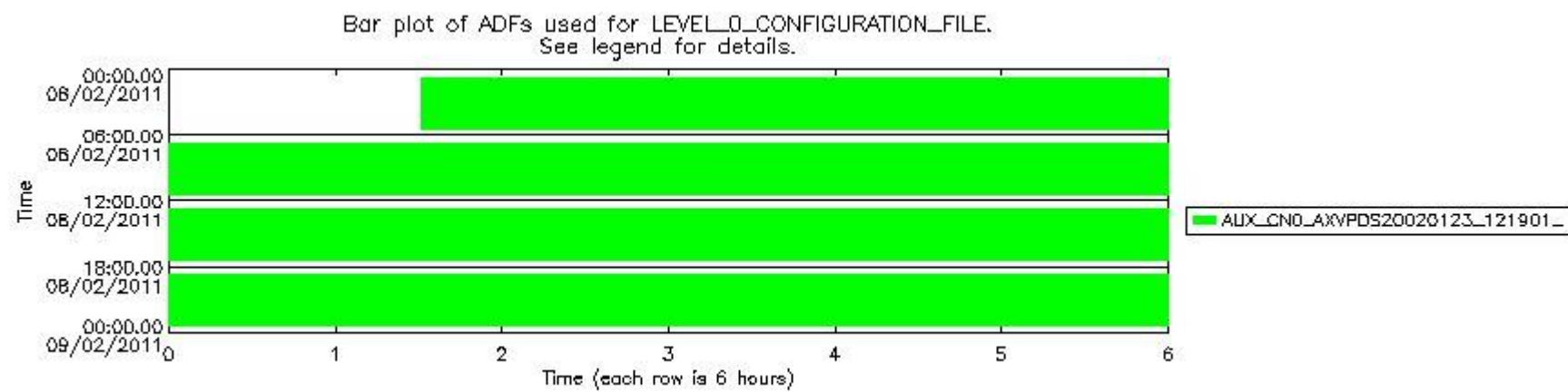
### 0.3 ADF monitoring

The use of ADFs is shown in two ways:

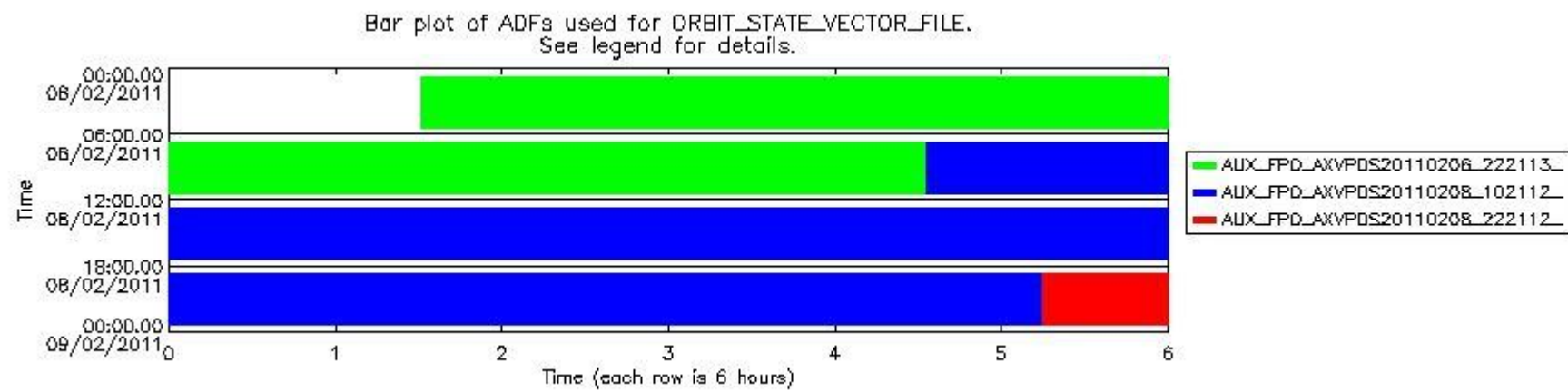
1. By means of two tables that can be used to find the ADF used for a specific product.
2. By means of plots that show changes in ADF using colours.

Number	ADF
0	AUX_CN0_AXVPDS20020123_121901_20020101_000000_20200101_000000
1	AUX_FPO_AXVPDS20110206_222113_20110206_193952_20110216_201329
2	AUX_FPO_AXVPDS20110208_102112_20110207_190309_20110217_211659
3	AUX_FPO_AXVPDS20110208_222112_20110208_182625_20110218_204016

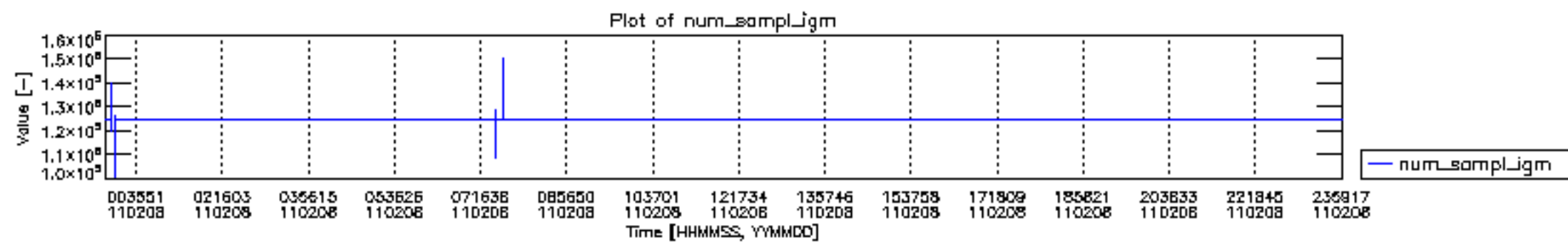
Number	Product name	#CNO	#FPO
0	MIP_NL__0PNPDE20110208_013042_000044103099_00189_46755_2876.N1	0	1
1	MIP_NL__0PNPDE20110208_024341_000061423099_00190_46756_2877.N1	0	1
2	MIP_NL__0PNPDE20110208_042529_000060353099_00191_46757_2878.N1	0	1
3	MIP_NL__0PNPDK20110208_060530_000041223099_00192_46758_4242.N1	0	1
4	MIP_NL__0PNPDK20110208_071314_000061423099_00193_46759_4243.N1	0	1
5	MIP_NL__0PNPDK20110208_085410_000060103099_00194_46760_4244.N1	0	1
6	MIP_NL__0PNPDK20110208_103246_000060003099_00195_46761_4245.N1	0	2
7	MIP_NL__0PNPDK20110208_121141_000058683099_00196_46762_4246.N1	0	2
8	MIP_NL__0PNPDK20110208_134748_000060603099_00197_46763_4247.N1	0	2
9	MIP_NL__0PNPDK20110208_152752_000059243099_00198_46764_4248.N1	0	2
10	MIP_NL__0PNPDK20110208_170555_000058893099_00199_46765_4249.N1	0	2
11	MIP_NL__0PNPDK20110208_184303_000059373099_00200_46766_4250.N1	0	2
12	MIP_NL__0PNPDE20110208_202028_000044453099_00201_46767_2879.N1	0	2
13	MIP_NL__0PNPDE20110208_213228_000062233099_00201_46767_2880.N1	0	2
14	MIP_NL__0PNPDE20110208_231504_000061653099_00202_46768_2881.N1	0	3

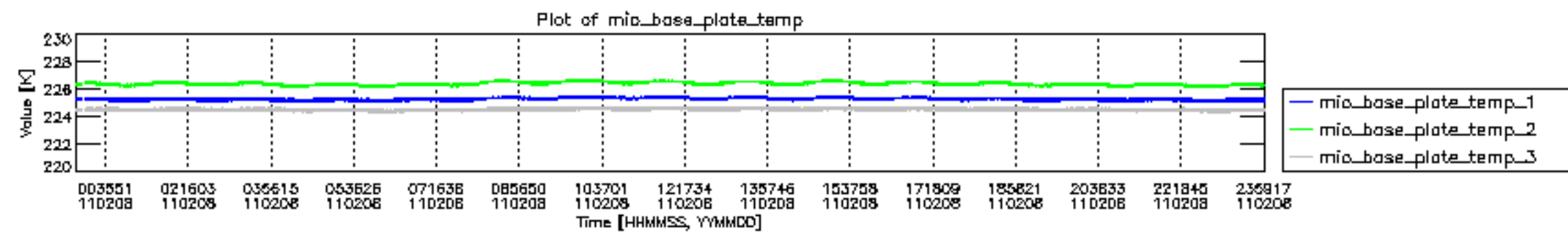


mipas\_daily\_report\_level0\_KSPT\_L0\_4504\_N\_20110208\_12.PNG

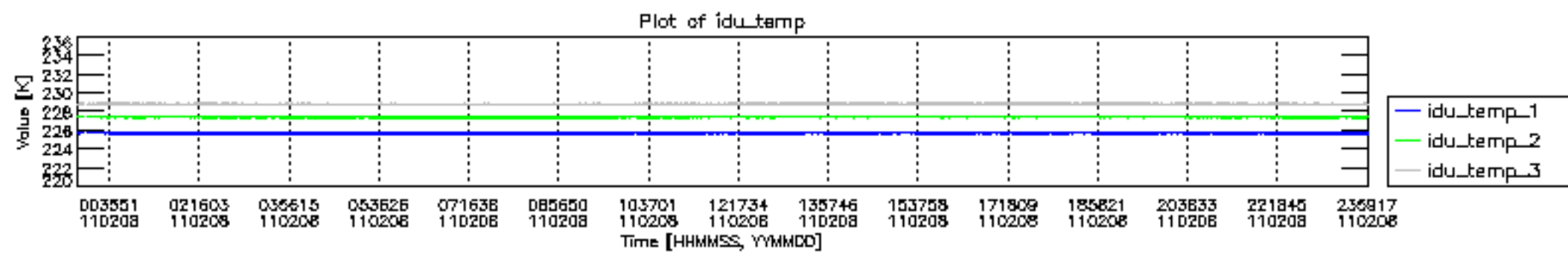


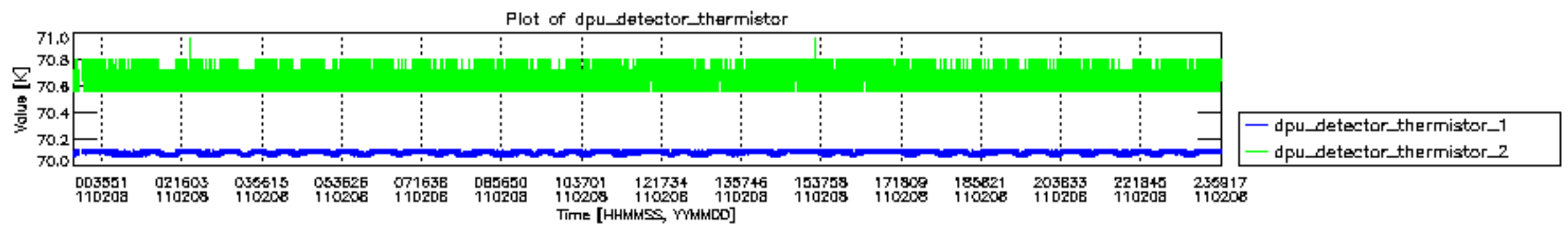
mipas\_daily\_report\_level0\_KSPT\_L0\_4504\_N\_20110208\_13.PNG

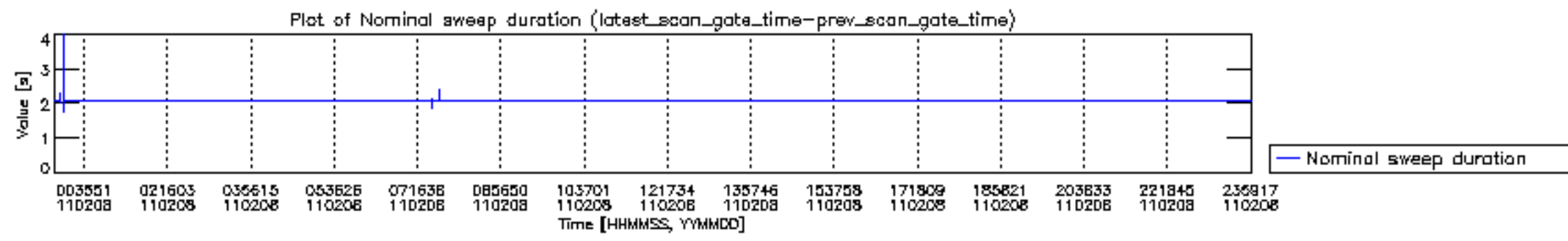


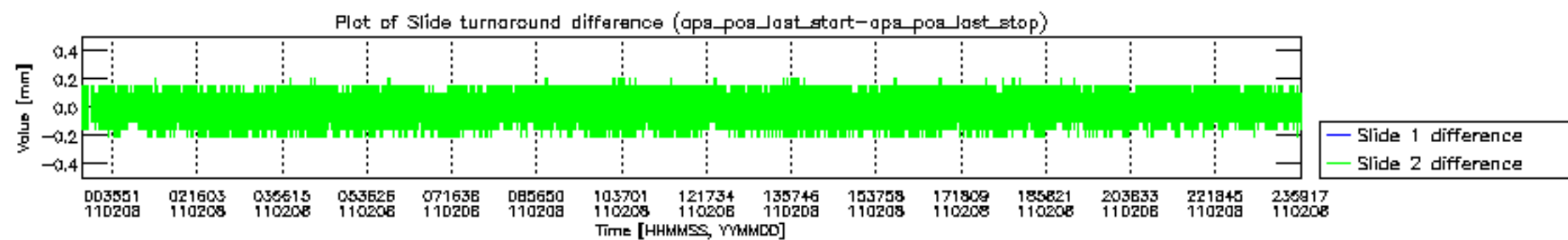


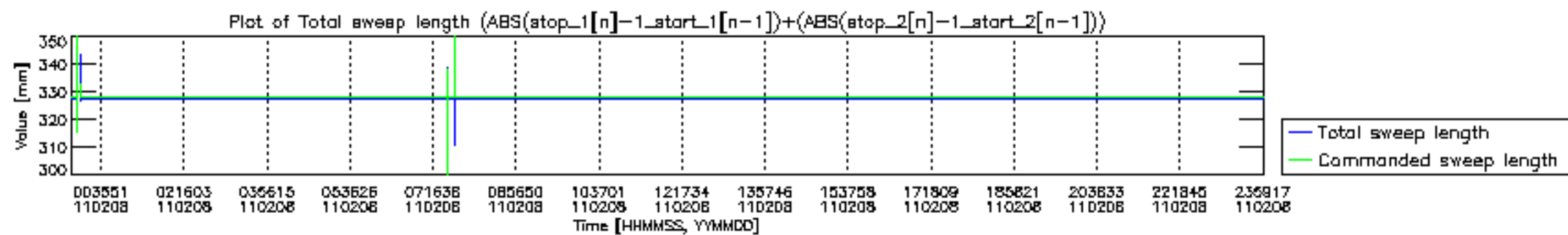




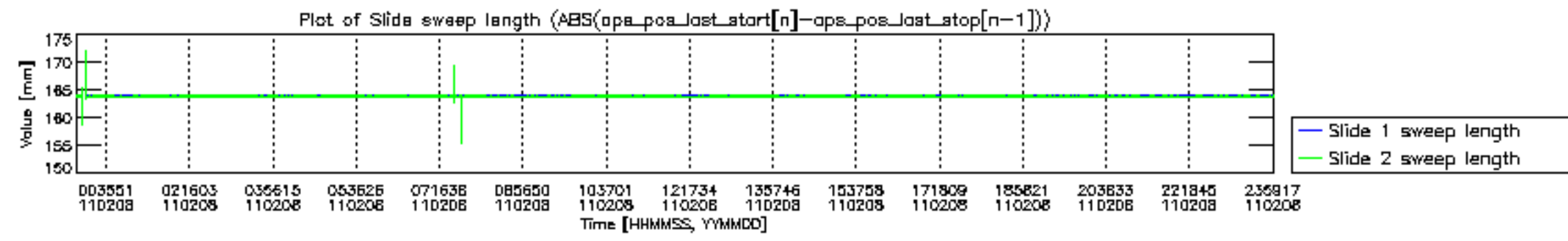


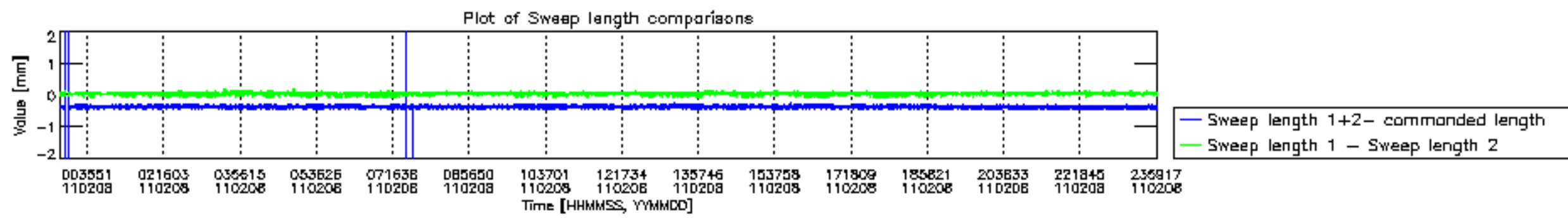


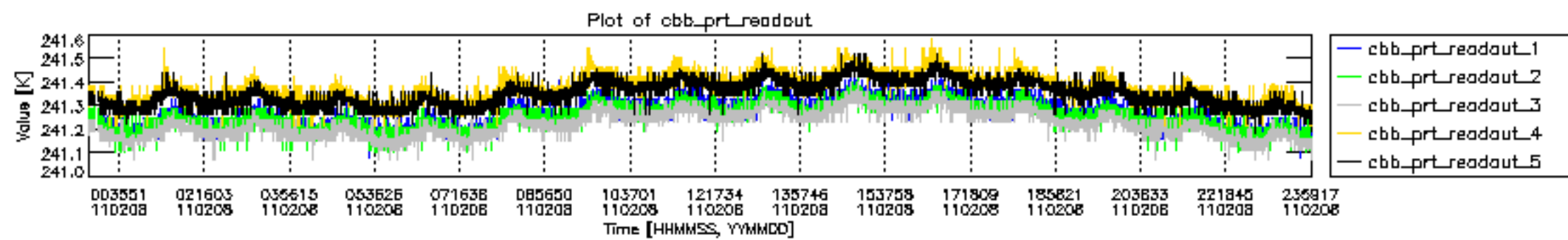


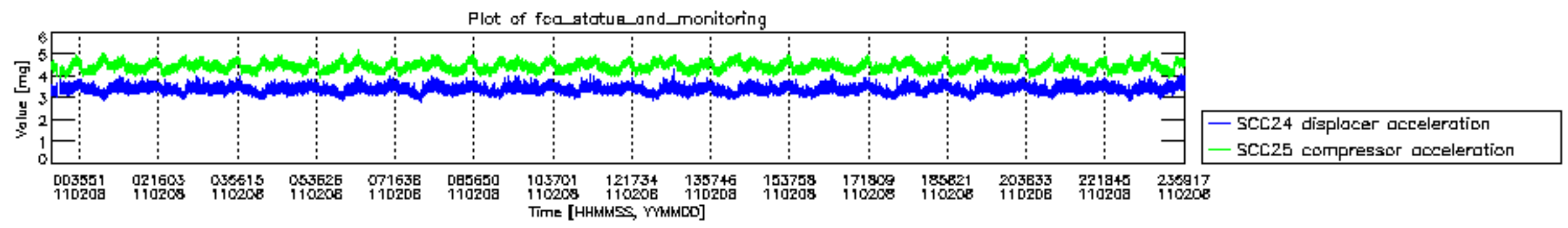












MIPNLOP\_MIPSOUPAC\_aux\_fields\_igm\_cal, channel statistics plot  
 Colour indicates value.

