

## 0. MIPAS Daily Report for level 0 products

### [0.1 General Info](#)

### [0.2 Instrument Operational Performance Parameters](#)

### [0.3 ADF monitoring](#)

## 0.1 General Info

This report contains a daily analysis on parameters extracted from MIPAS level 0 data (The MIP\_NL\_\_0P product).

### 0.1.1 Report summary

The table below shows general characteristics of the data that are included into this report.

Item	Value
Report version	v1.6 08-11-2010
Time of report generation	11FEB2011 05:23:17
Data source version	KSPT_L0/4504-N
Processing scope for products	06FEB2011 00:00:00 to 07FEB2011 00:00:00
Start time of first product within scope	06FEB2011 01:06:49
Stop time of last product within scope	07FEB2011 00:29:31
Total number of level 0 products	14
Number of level 0 products with errors	0

### 0.1.2 Product Quality Indicators per product

The following table shows a summary for each product used in this report.

#	Product name	Start time	Stop time	Prod err	ISP err sign	ISP miss sign	ISP disc sign	rs sign
0	MIP_NL__0PNPDE20110206_010649_000101783099_00160_46726_2863.N1	06FEB2011 01:06:49	06FEB2011 03:56:26	0	0	0	0	0
1	MIP_NL__0PNPDE20110206_035553_000062113099_00162_46728_2864.N1	06FEB2011 03:55:53	06FEB2011 05:39:23	0	0	0	0	0
2	MIP_NL__0PNPDE20110206_053842_000061083099_00163_46729_2865.N1	06FEB2011 05:38:42	06FEB2011 07:20:30	0	0	0	0	0
3	MIP_NL__0PNPDK20110206_071946_000040113099_00164_46730_4221.N1	06FEB2011 07:19:46	06FEB2011 08:26:37	0	0	0	0	0
4	MIP_NL__0PNPDK20110206_082538_000060673099_00165_46731_4222.N1	06FEB2011 08:25:38	06FEB2011 10:06:45	0	0	0	0	0
5	MIP_NL__0PNPDK20110206_100509_000060623099_00166_46732_4223.N1	06FEB2011 10:05:09	06FEB2011 11:46:11	0	0	0	0	0
6	MIP_NL__0PNPDK20110206_114433_000059683099_00167_46733_4224.N1	06FEB2011 11:44:33	06FEB2011 13:24:01	0	0	0	0	0
7	MIP_NL__0PNPDK20110206_132303_000059563099_00168_46734_4225.N1	06FEB2011 13:23:03	06FEB2011 15:02:19	0	0	0	0	0
8	MIP_NL__0PNPDK20110206_150120_000059353099_00169_46735_4230.N1	06FEB2011 15:01:20	06FEB2011 16:40:15	0	0	0	0	0
9	MIP_NL__0PNPDK20110206_163942_000059453099_00170_46736_4231.N1	06FEB2011 16:39:42	06FEB2011 18:18:47	0	0	0	0	0
10	MIP_NL__0PNPDK20110206_181750_000059183099_00171_46737_4232.N1	06FEB2011 18:17:50	06FEB2011 19:56:29	0	0	0	0	0
11	MIP_NL__0PNPDE20110206_195440_000041513099_00172_46738_2866.N1	06FEB2011 19:54:40	06FEB2011 21:03:51	0	0	0	0	0
12	MIP_NL__0PNPDE20110206_210252_000064153099_00172_46738_2867.N1	06FEB2011 21:02:52	06FEB2011 22:49:48	0	0	0	0	0
13	MIP_NL__0PNPDE20110206_224818_000060733099_00173_46739_2868.N1	06FEB2011 22:48:18	07FEB2011 00:29:31	0	0	0	0	0

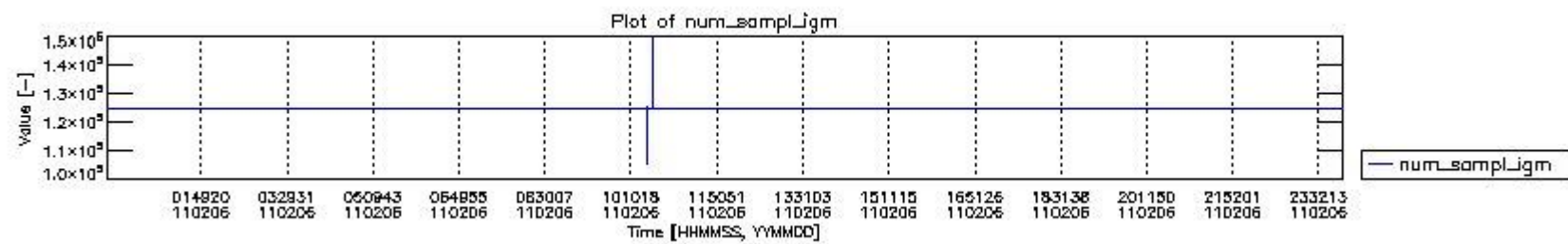
## 0.2 Instrument Operational Performance Parameters

The following plots give an overview of various instrument parameters for this day. The instrument parameters are part of the auxiliary data field within the source packets of the MIP\_NL\_\_0P product. The auxiliary data is normally included twice per interferogram. Note that only the first packet is currently included in monitoring.

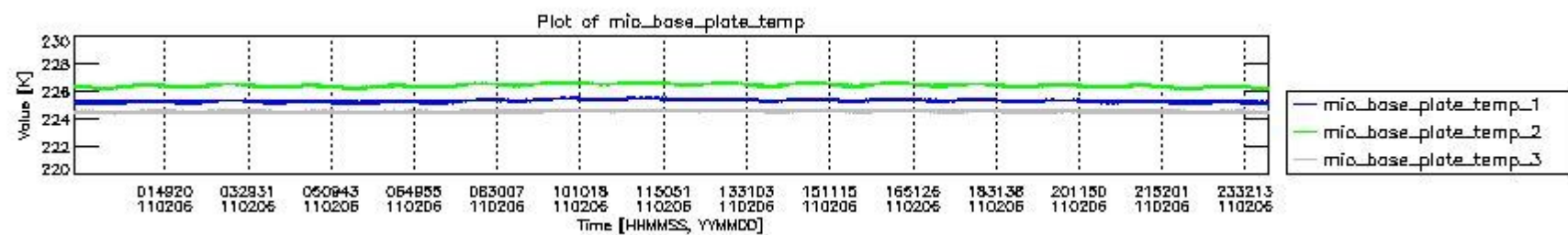
The following table shows the counts of various interferogram number of samples

Number of igm samples	Count [#]	Count [%]
105303	1	0.0024032107
105938	1	0.0024032107
124800	38651	92.886496
124803	2954	7.0990844

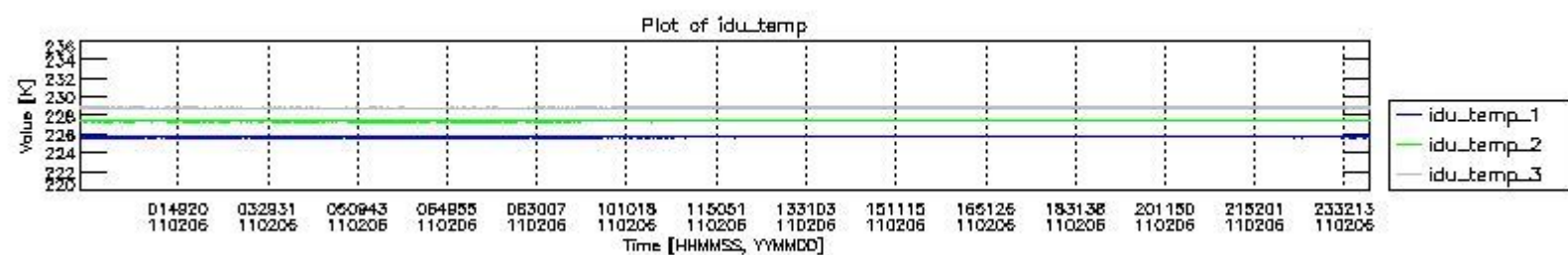
125435	1	0.0024032107
127308	1	0.0024032107
147440	1	0.0024032107
149948	1	0.0024032107



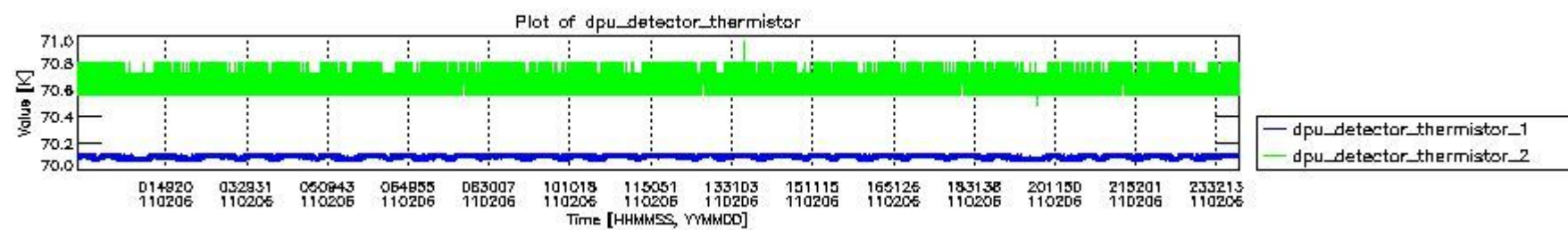
mipas\_daily\_report\_level0\_KSPT\_L0\_4504\_N\_20110206\_0.PNG



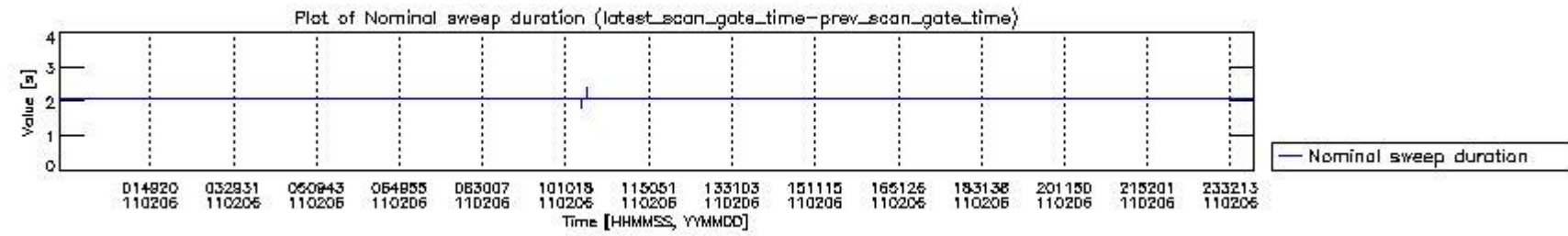
mipas\_daily\_report\_level0\_KSPT\_L0\_4504\_N\_20110206\_1.PNG



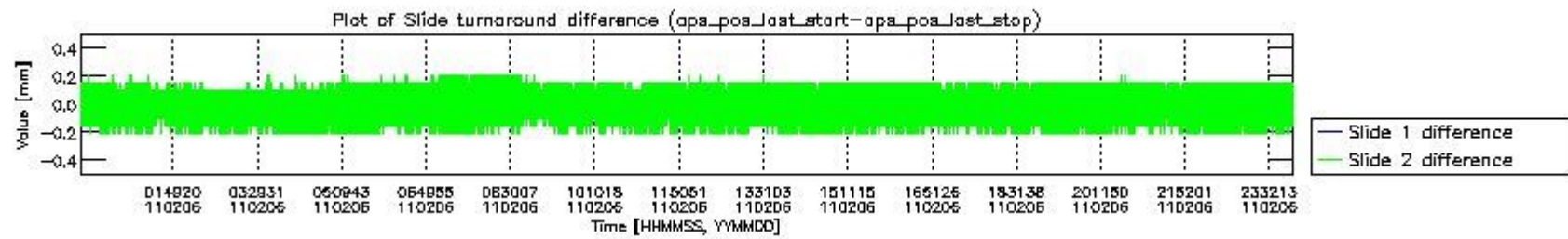
mipas\_daily\_report\_level0\_KSPT\_L0\_4504\_N\_20110206\_2.PNG



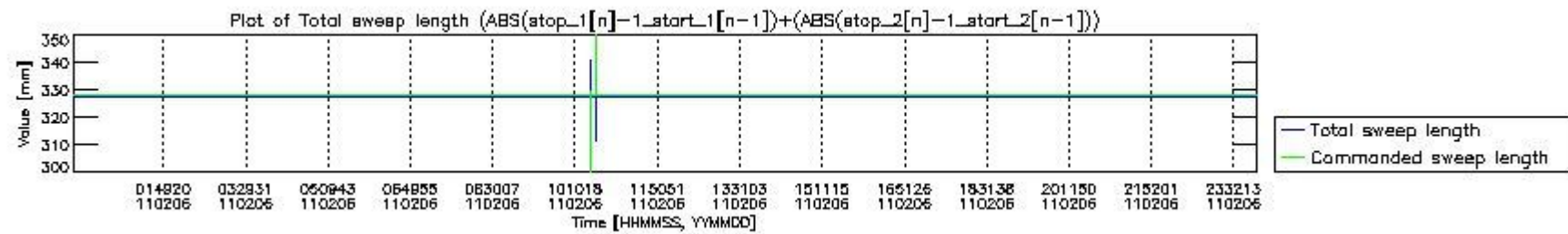
mipas\_daily\_report\_level0\_KSPT\_L0\_4504\_N\_20110206\_3.PNG



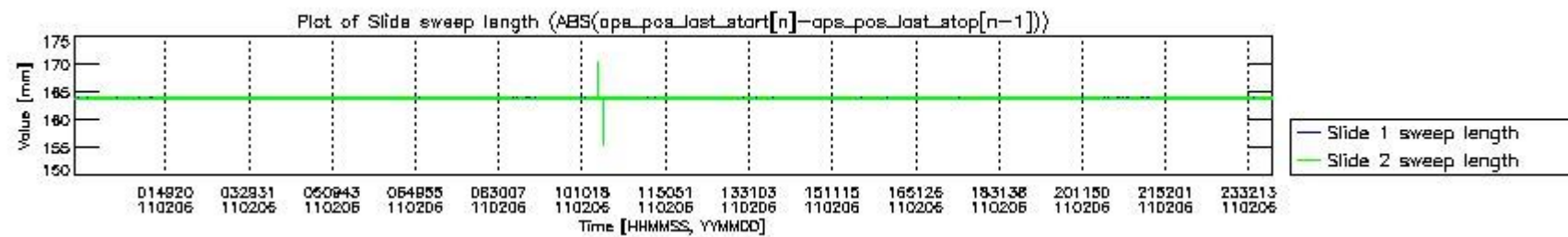
mipas\_daily\_report\_level0\_KSPT\_L0\_4504\_N\_20110206\_4.PNG



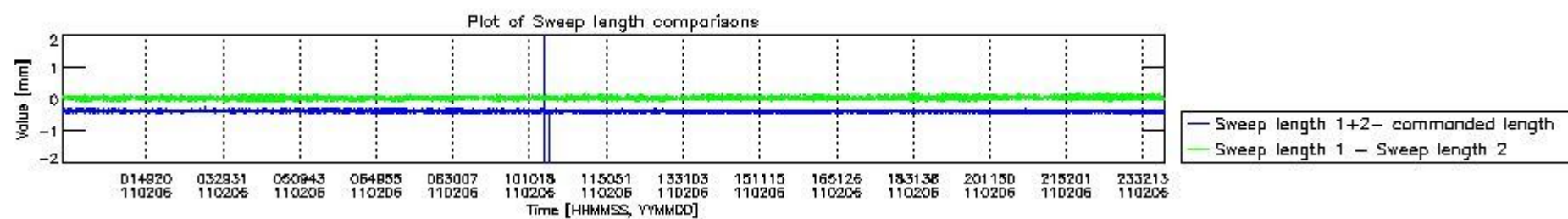
mipas\_daily\_report\_level0\_KSPT\_L0\_4504\_N\_20110206\_5.PNG



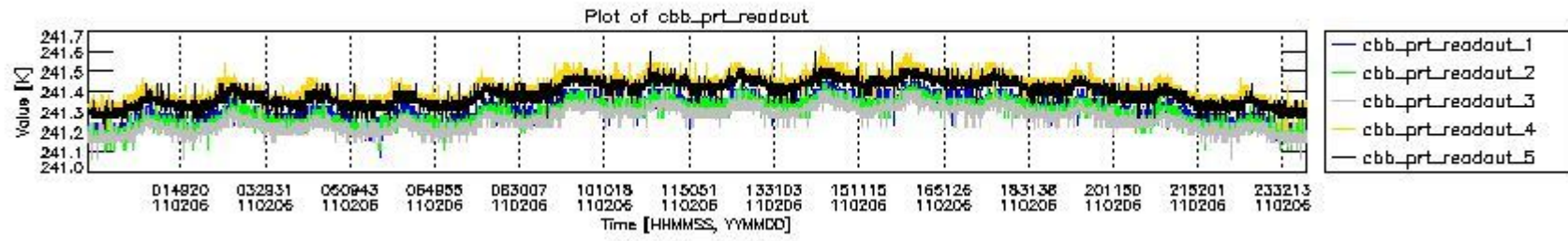
mipas\_daily\_report\_level0\_KSPT\_L0\_4504\_N\_20110206\_6.PNG



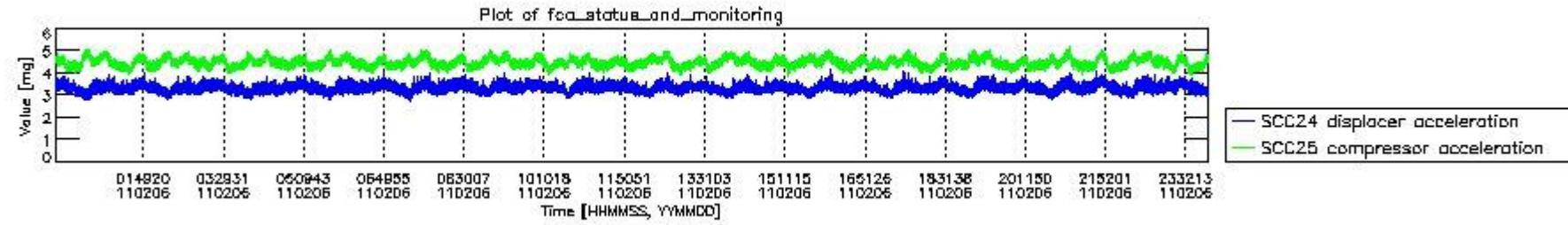
mipas\_daily\_report\_level0\_KSPT\_L0\_4504\_N\_20110206\_7.PNG



mipas\_daily\_report\_level0\_KSPT\_L0\_4504\_N\_20110206\_8.PNG



mipas\_daily\_report\_level0\_KSPT\_L0\_4504\_N\_20110206\_9.PNG

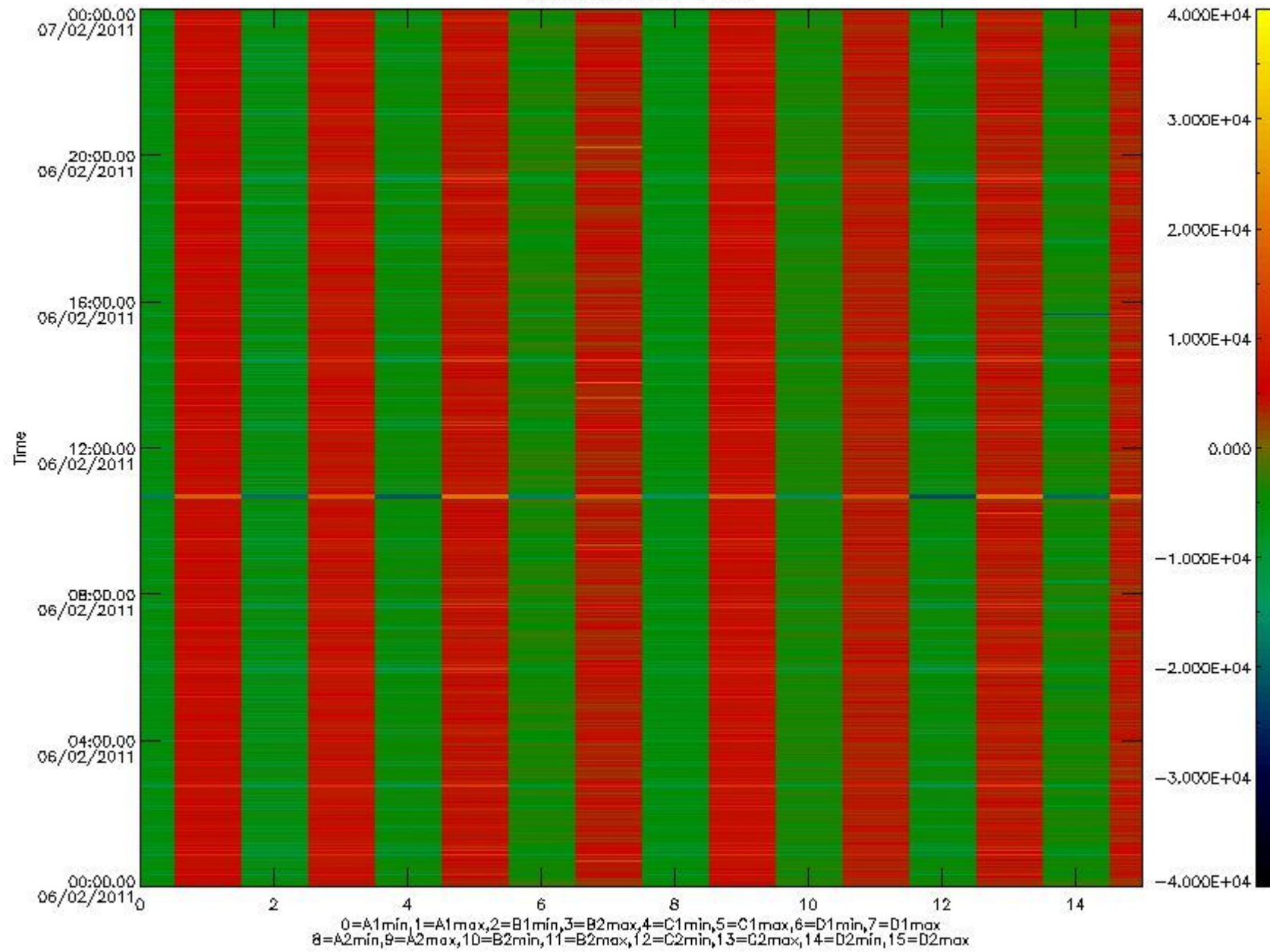


mipas\_daily\_report\_level0\_KSPT\_L0\_4504\_N\_20110206\_10.PNG

The following table shows channel statistics for all channels for this day.

Channel	Min	Max	ADC
A1	-17442	18448	16bit
B1	-18754	16321	16bit
C1	-23199	21611	16bit
D1	-25907	31942	16bit
A2	-15127	18562	16bit
B2	-16763	16503	16bit
C2	-22702	24277	16bit
D2	-32768	30942	16bit

MIPNLOP\_MIPSOUPAC\_aux\_fields\_igm\_cal, channel statistics plot  
Colour indicates value.



mipas\_daily\_report\_level0\_KSPT\_L0\_4504\_N\_20110206\_11.PNG

### 0.3 ADF monitoring

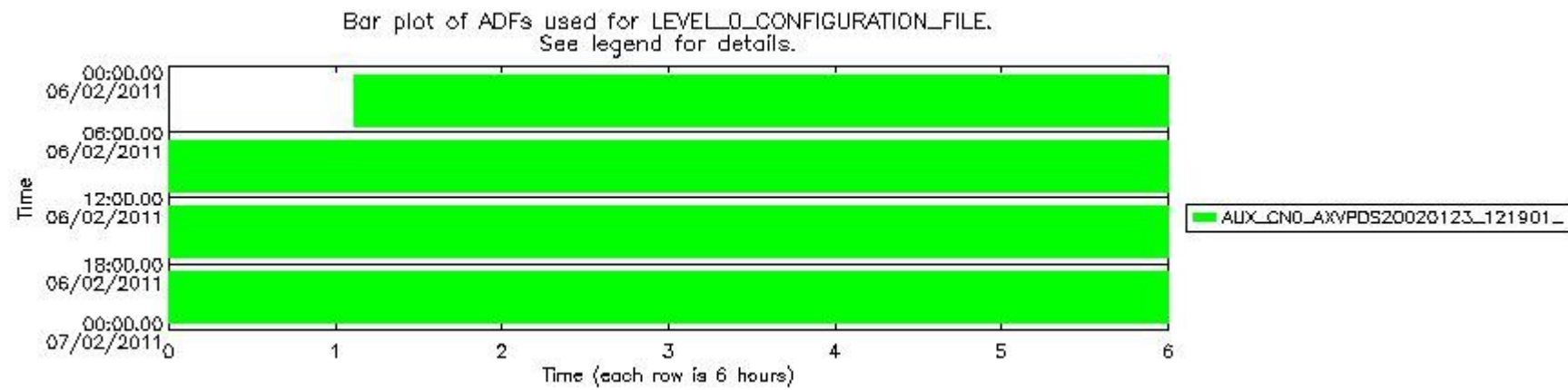
The use of ADFs is shown in two ways:

1. By means of two tables that can be used to find the ADF used for a specific product.
2. By means of plots that show changes in ADF using colours.

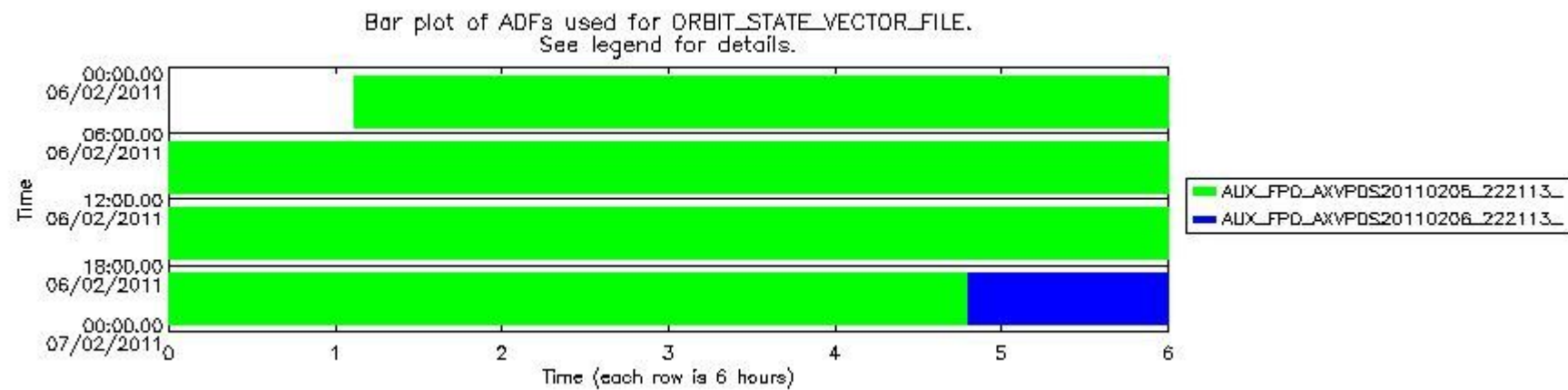
Number	ADF
0	AUX_CN0_AXVPDS20020123_121901_20020101_000000_20200101_000000
1	AUX_FPO_AXVPDS20110205_222113_20110205_183622_20110215_205013
2	AUX_FPO_AXVPDS20110206_222113_20110206_193952_20110216_201329

Number	Product name	#CN0	#FPO
--------	--------------	------	------

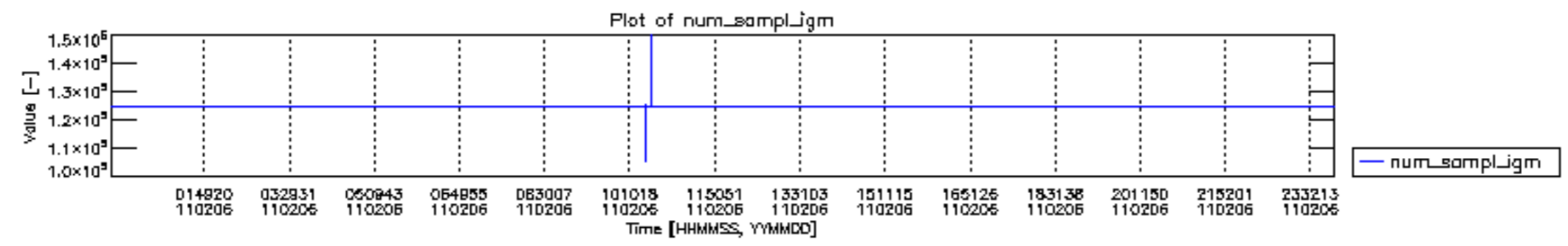
0	MIP_NL__0PNPDE20110206_010649_000101783099_00160_46726_2863.N1	0	1
1	MIP_NL__0PNPDE20110206_035553_000062113099_00162_46728_2864.N1	0	1
2	MIP_NL__0PNPDE20110206_053842_000061083099_00163_46729_2865.N1	0	1
3	MIP_NL__0PNPDK20110206_071946_000040113099_00164_46730_4221.N1	0	1
4	MIP_NL__0PNPDK20110206_082538_000060673099_00165_46731_4222.N1	0	1
5	MIP_NL__0PNPDK20110206_100509_000060623099_00166_46732_4223.N1	0	1
6	MIP_NL__0PNPDK20110206_114433_000059683099_00167_46733_4224.N1	0	1
7	MIP_NL__0PNPDK20110206_132303_000059563099_00168_46734_4225.N1	0	1
8	MIP_NL__0PNPDK20110206_150120_000059353099_00169_46735_4230.N1	0	1
9	MIP_NL__0PNPDK20110206_163942_000059453099_00170_46736_4231.N1	0	1
10	MIP_NL__0PNPDK20110206_181750_000059183099_00171_46737_4232.N1	0	1
11	MIP_NL__0PNPDE20110206_195440_000041513099_00172_46738_2866.N1	0	1
12	MIP_NL__0PNPDE20110206_210252_000064153099_00172_46738_2867.N1	0	1
13	MIP_NL__0PNPDE20110206_224818_000060733099_00173_46739_2868.N1	0	2

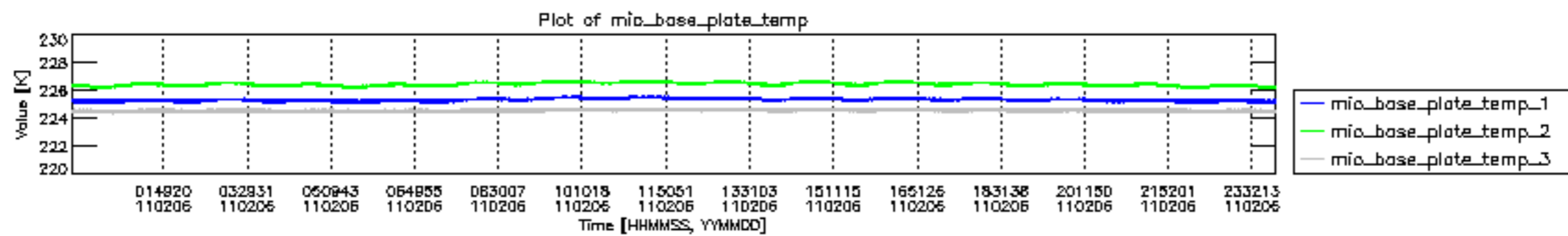


mipas\_daily\_report\_level0\_KSPT\_L0\_4504\_N\_20110206\_12.PNG

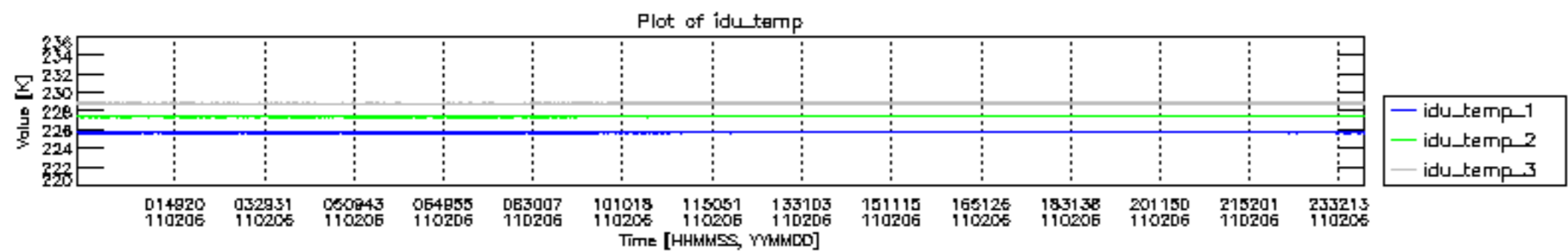


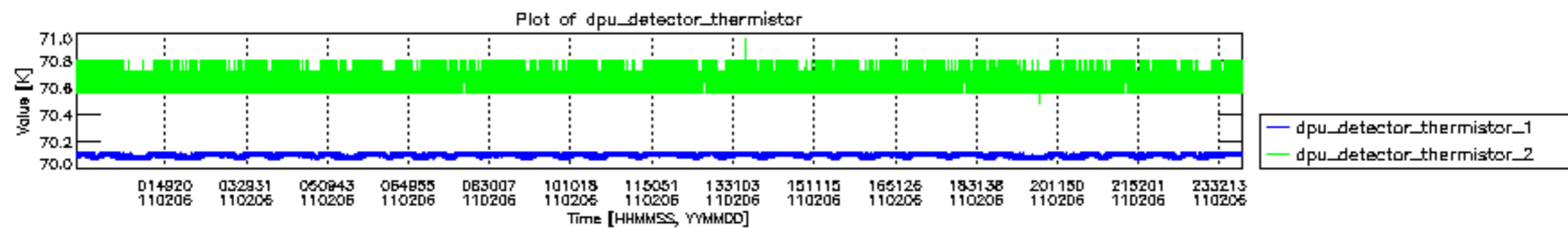
mipas\_daily\_report\_level0\_KSPT\_L0\_4504\_N\_20110206\_13.PNG

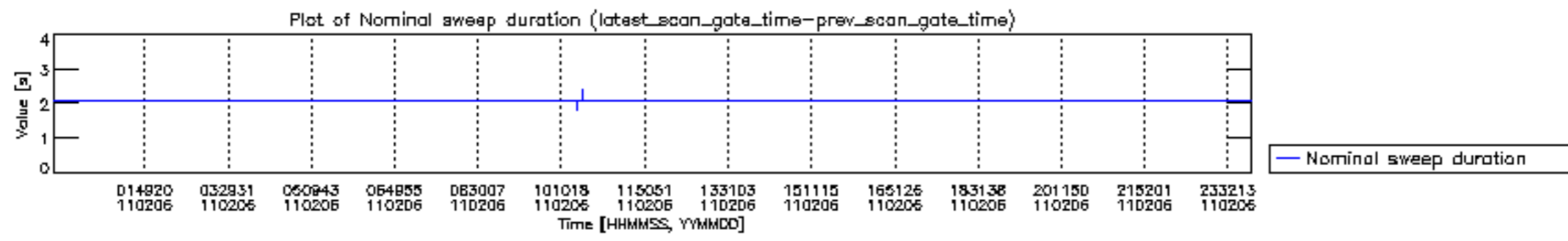


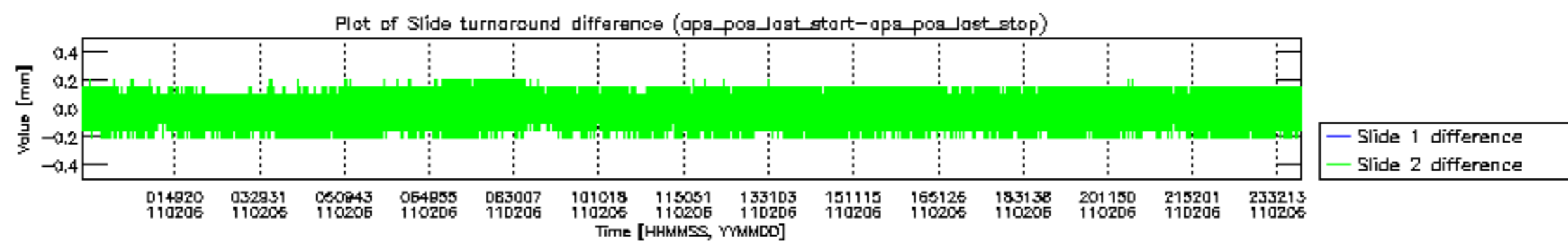


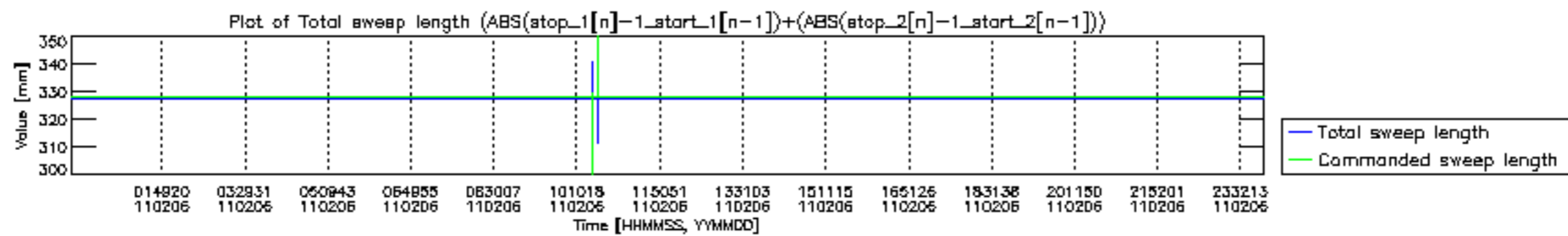


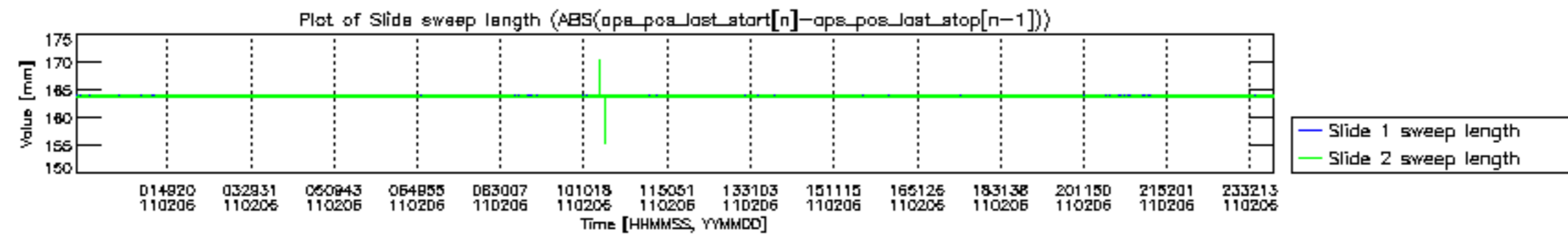


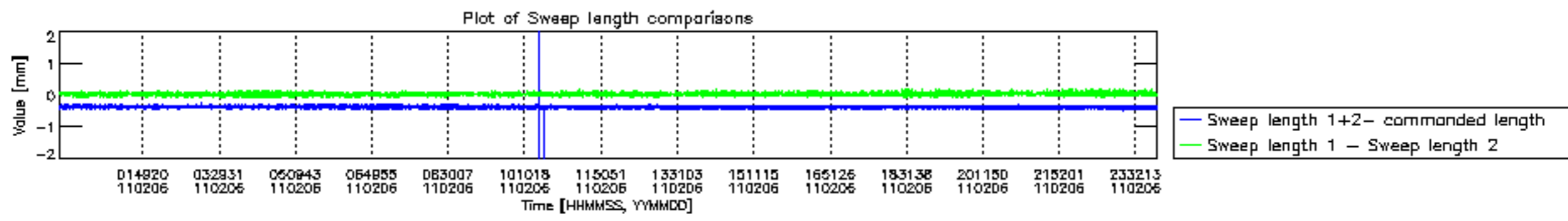


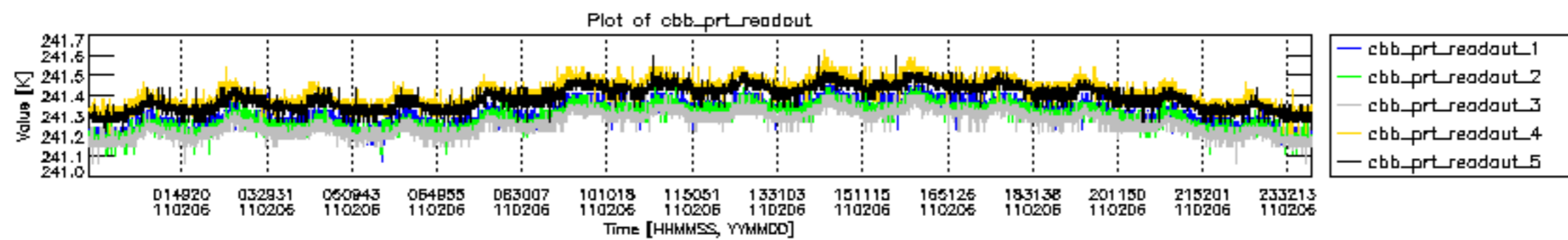




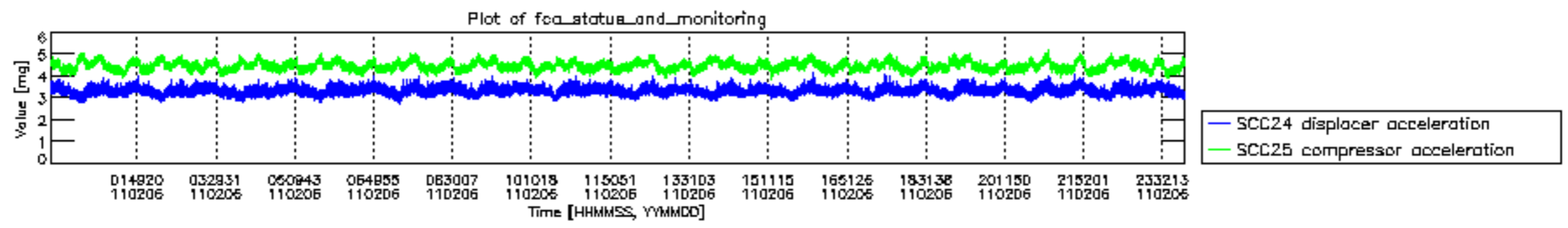












MIPNLOP\_MIPSOUPAC\_aux\_fields\_igm\_cal, channel statistics plot  
 Colour indicates value.

