

0. MIPAS Daily Report for level 0 products

[0.1 General Info](#)

[0.2 Instrument Operational Performance Parameters](#)

[0.3 ADF monitoring](#)

0.1 General Info

This report contains a daily analysis on parameters extracted from MIPAS level 0 data (The MIP_NL__0P product).

0.1.1 Report summary

The table below shows general characteristics of the data that are included into this report.

Item	Value
Report version	v1.6 08-11-2010
Time of report generation	24JAN2011 05:24:12
Data source version	KSPT_L0/4504-N
Processing scope for products	19JAN2011 00:00:00 to 20JAN2011 00:00:00
Start time of first product within scope	19JAN2011 00:24:32
Stop time of last product within scope	20JAN2011 01:27:18
Total number of level 0 products	16
Number of level 0 products with errors	0

0.1.2 Product Quality Indicators per product

The following table shows a summary for each product used in this report.

#	Product name	Start time	Stop time	Prod err	ISP err sign	ISP miss sign	ISP disc sign	rs sign
0	MIP_NL__0PNPDE20110119_002432_000058903098_00332_46467_2744.N1	19JAN2011 00:24:32	19JAN2011 02:02:42	0	0	0	0	0
1	MIP_NL__0PNPDE20110119_020148_000045293098_00333_46468_2745.N1	19JAN2011 02:01:48	19JAN2011 03:17:17	0	0	0	0	0
2	MIP_NL__0PNPDE20110119_031644_000061253098_00334_46469_2746.N1	19JAN2011 03:16:44	19JAN2011 04:58:49	0	0	0	0	0
3	MIP_NL__0PNPDE20110119_045816_000060813098_00335_46470_2747.N1	19JAN2011 04:58:16	19JAN2011 06:39:37	0	0	0	0	0
4	MIP_NL__0PNPDK20110119_063904_000040133098_00336_46471_4058.N1	19JAN2011 06:39:04	19JAN2011 07:45:57	0	0	0	0	0
5	MIP_NL__0PNPDK20110119_074458_000061193098_00337_46472_4059.N1	19JAN2011 07:44:58	19JAN2011 09:26:58	0	0	0	0	0
6	MIP_NL__0PNPDK20110119_092519_000059603098_00338_46473_4060.N1	19JAN2011 09:25:19	19JAN2011 11:04:40	0	0	0	0	0
7	MIP_NL__0PNPDK20110119_110255_000061153098_00339_46474_4061.N1	19JAN2011 11:02:55	19JAN2011 12:44:50	0	0	0	0	0
8	MIP_NL__0PNPDK20110119_124352_000059183098_00340_46475_4062.N1	19JAN2011 12:43:52	19JAN2011 14:22:30	0	0	0	0	0
9	MIP_NL__0PNPDK20110119_142115_000060193098_00341_46476_4063.N1	19JAN2011 14:21:15	19JAN2011 16:01:34	0	0	0	0	0
10	MIP_NL__0PNPDK20110119_160048_000058393098_00342_46477_4064.N1	19JAN2011 16:00:48	19JAN2011 17:38:07	0	0	0	0	0
11	MIP_NL__0PNPDK20110119_173706_000060423098_00343_46478_4065.N1	19JAN2011 17:37:06	19JAN2011 19:17:48	0	0	0	0	0
12	MIP_NL__0PNPDK20110119_191604_000059773098_00344_46479_4066.N1	19JAN2011 19:16:04	19JAN2011 20:55:41	0	0	0	0	0
13	MIP_NL__0PNPDE20110119_205333_000045403098_00345_46480_2748.N1	19JAN2011 20:53:33	19JAN2011 22:09:13	0	0	0	0	0
14	MIP_NL__0PNPDE20110119_220808_000060613098_00345_46480_2749.N1	19JAN2011 22:08:08	19JAN2011 23:49:09	0	0	0	0	0
15	MIP_NL__0PNPDE20110119_234802_000059563098_00346_46481_2750.N1	19JAN2011 23:48:02	20JAN2011 01:27:18	0	0	0	0	0

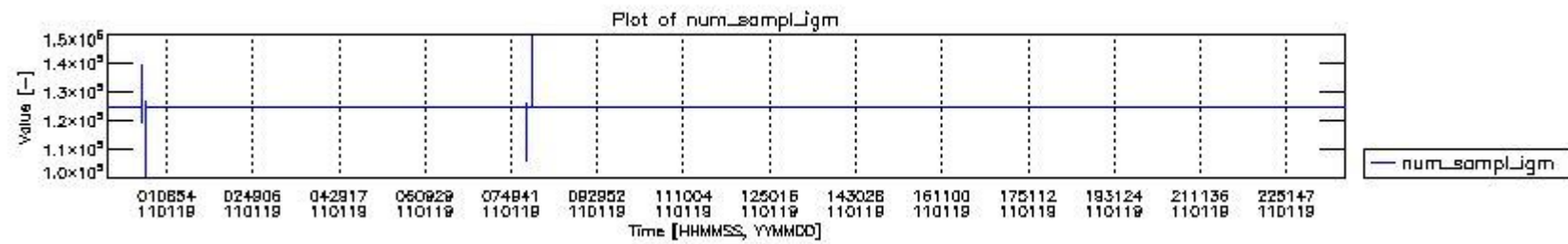
0.2 Instrument Operational Performance Parameters

The following plots give an overview of various instrument parameters for this day. The instrument parameters are part of the auxiliary data field within the source packets of the MIP_NL__0P product. The auxiliary data is normally included twice per interferogram. Note that only the first packet is currently included in monitoring.

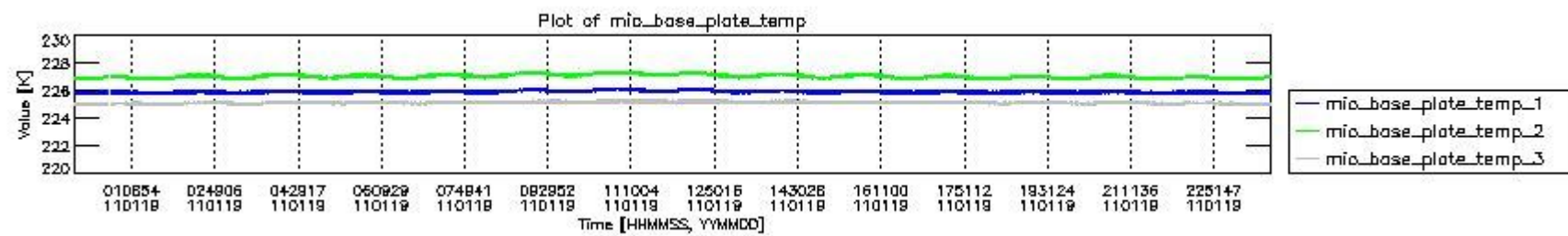
The following table shows the counts of various interferogram number of samples

Number of igm samples	Count [#]	Count [%]
100483	1	0.0024039039
105749	1	0.0024039039

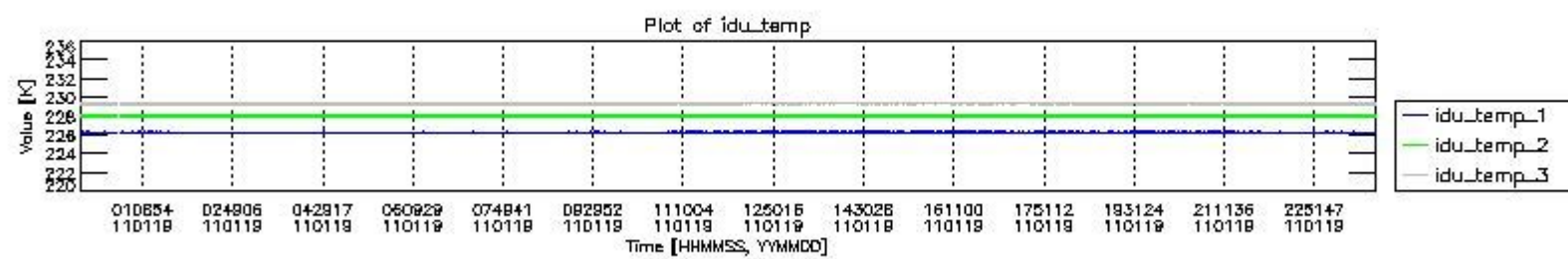
106830	1	0.0024039039
119130	1	0.0024039039
124800	38809	93.293108
124803	2778	6.6780451
125735	1	0.0024039039
125881	1	0.0024039039
126670	1	0.0024039039
127159	1	0.0024039039
133592	1	0.0024039039
139262	1	0.0024039039
147291	1	0.0024039039
149650	1	0.0024039039



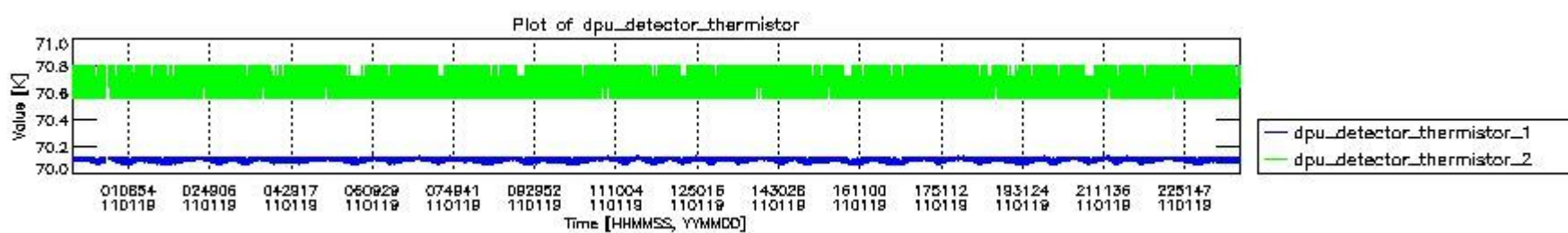
mipas_daily_report_level0_KSPT_L0_4504_N_20110119_0.PNG



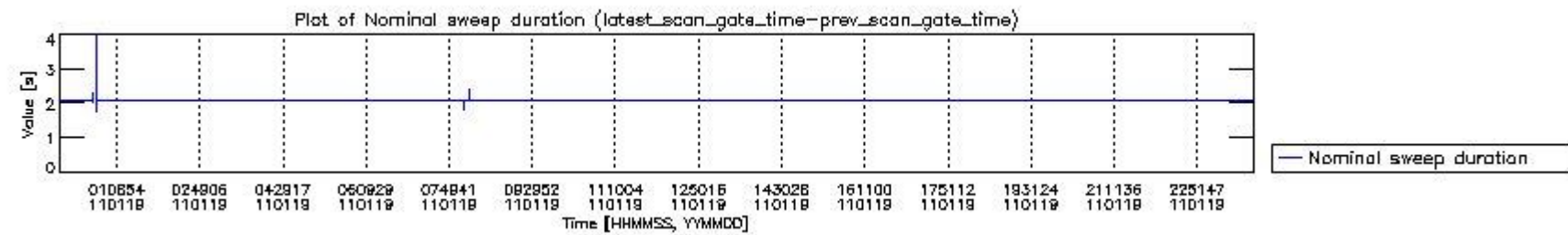
mipas_daily_report_level0_KSPT_L0_4504_N_20110119_1.PNG



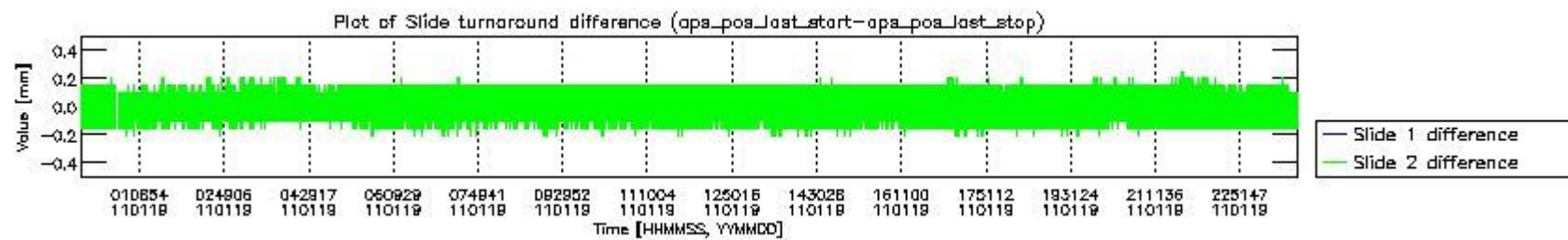
mipas_daily_report_level0_KSPT_L0_4504_N_20110119_2.PNG



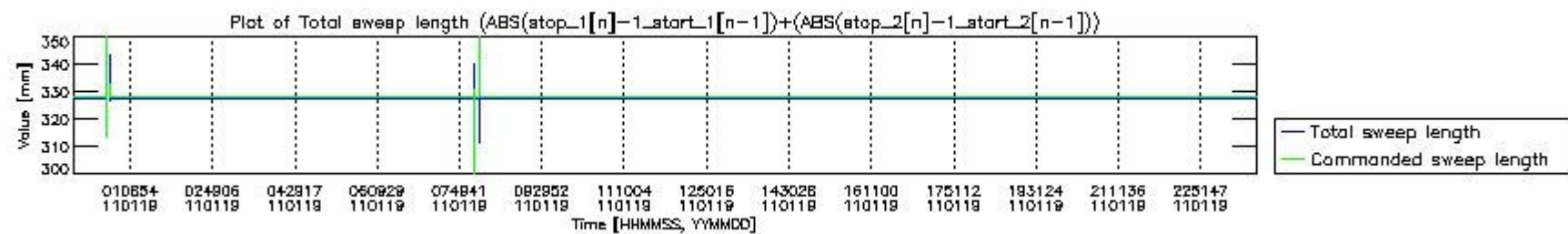
mipas_daily_report_level0_KSPT_L0_4504_N_20110119_3.PNG



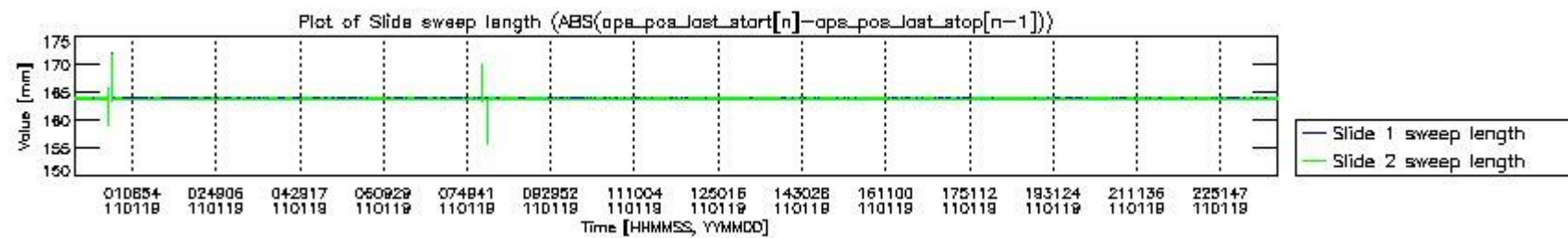
mipas_daily_report_level0_KSPT_L0_4504_N_20110119_4.PNG



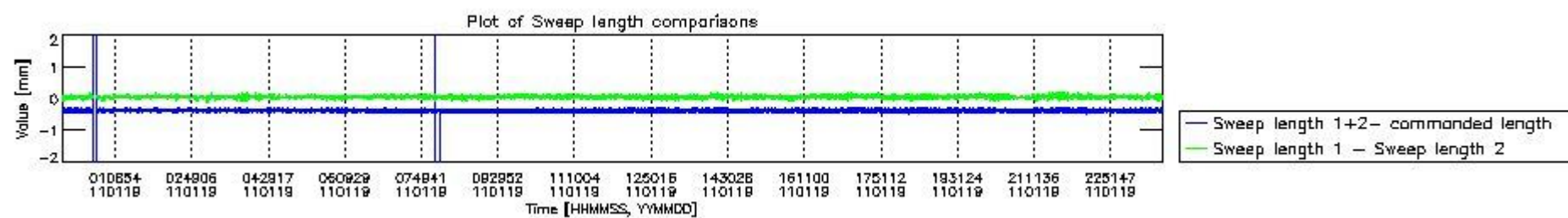
mipas_daily_report_level0_KSPT_L0_4504_N_20110119_5.PNG



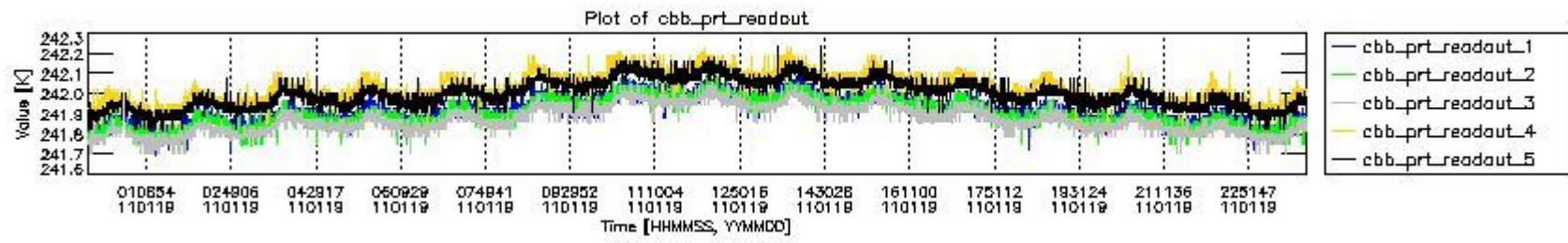
mipas_daily_report_level0_KSPT_L0_4504_N_20110119_6.PNG



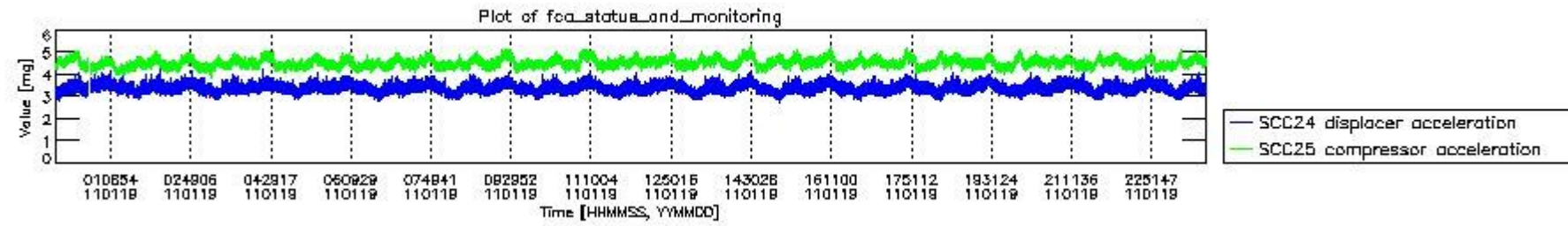
mipas_daily_report_level0_KSPT_L0_4504_N_20110119_7.PNG



mipas_daily_report_level0_KSPT_L0_4504_N_20110119_8.PNG



mipas_daily_report_level0_KSPT_L0_4504_N_20110119_9.PNG

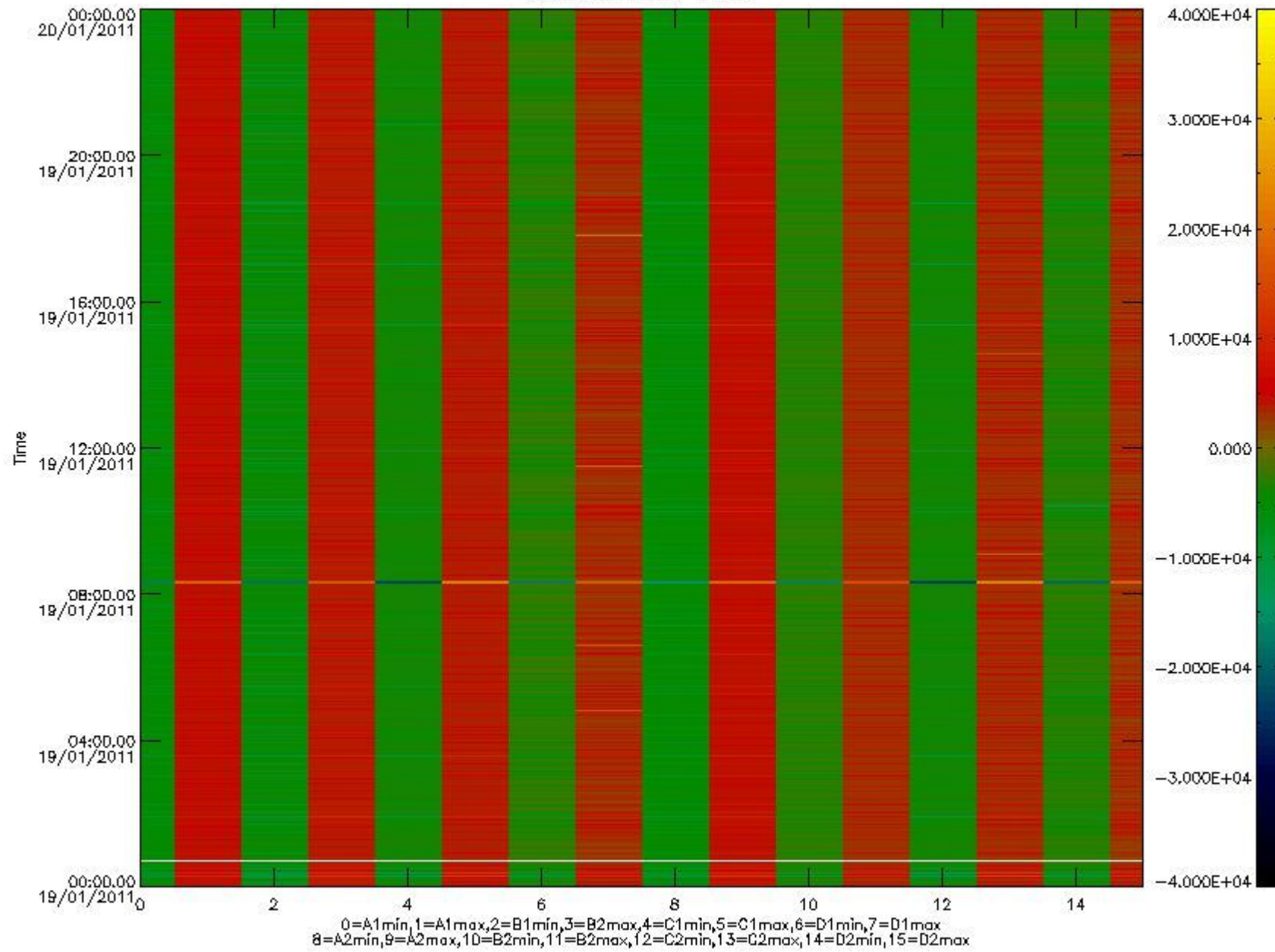


mipas_daily_report_level0_KSPT_L0_4504_N_20110119_10.PNG

The following table shows channel statistics for all channels for this day.

Channel	Min	Max	ADC
A1	-17640	18672	16bit
B1	-19053	16556	16bit
C1	-25008	22178	16bit
D1	-18258	32767	16bit
A2	-15284	18786	16bit
B2	-17083	16797	16bit
C2	-23236	24375	16bit
D2	-32768	19841	16bit

MIPNLOP_MIPSOUPAC_aux_fields_igm_cal, channel statistics plot
Colour indicates value.



mipas_daily_report_level0_KSPT_L0_4504_N_20110119_11.PNG

0.3 ADF monitoring

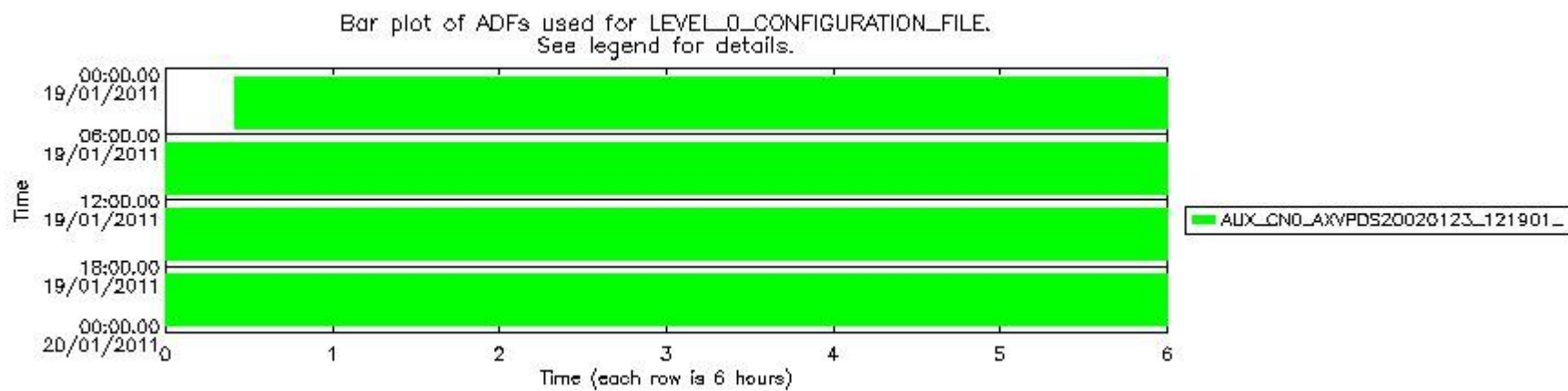
The use of ADFs is shown in two ways:

1. By means of two tables that can be used to find the ADF used for a specific product.
2. By means of plots that show changes in ADF using colours.

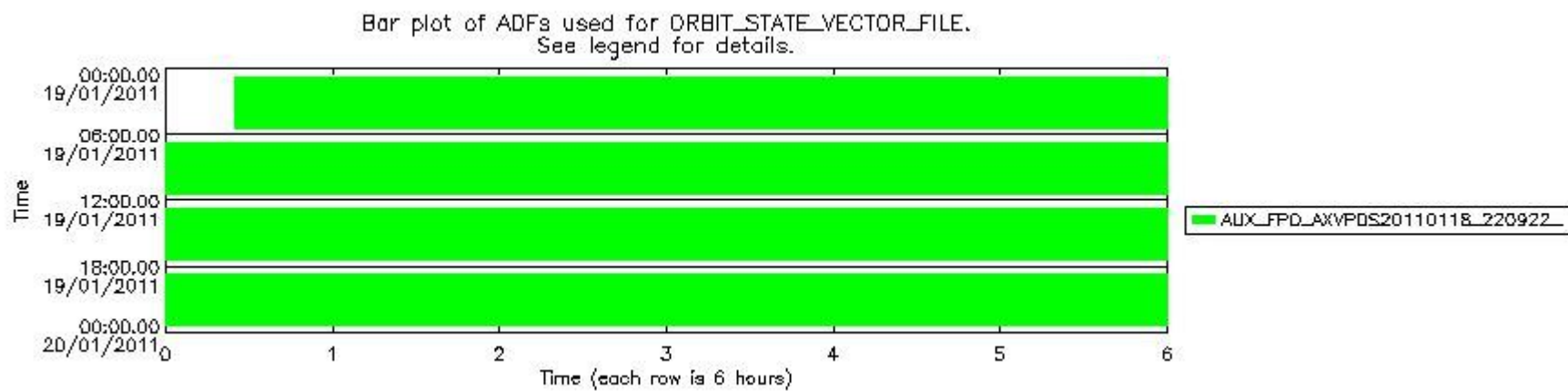
Number	ADF
0	AUX_CN0_AXVPDS20020123_121901_20020101_000000_20200101_000000
1	AUX_FPO_AXVPDS20110118_220922_20110118_193607_20110128_200945

Number	Product name	#CN0	#FPO
0	MIP_NL_0PNPDE20110119_002432_000058903098_00332_46467_2744.N1	0	1

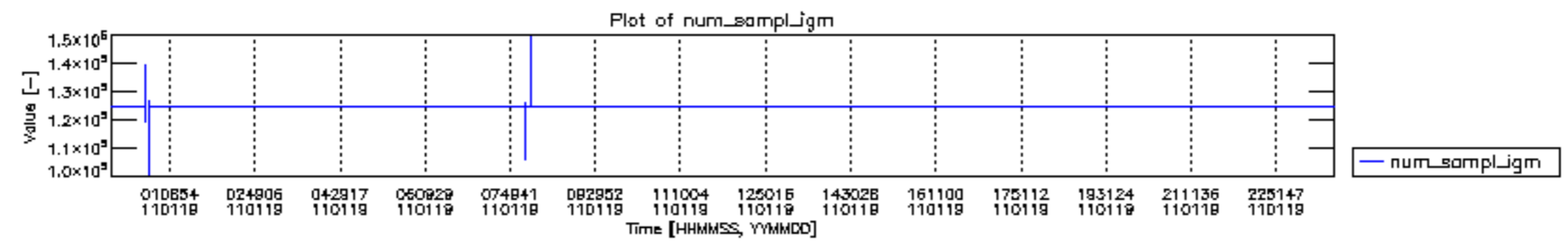
1	MIP_NL__0PNPDE20110119_020148_000045293098_00333_46468_2745.N1	0	1
2	MIP_NL__0PNPDE20110119_031644_000061253098_00334_46469_2746.N1	0	1
3	MIP_NL__0PNPDE20110119_045816_000060813098_00335_46470_2747.N1	0	1
4	MIP_NL__0PNPDK20110119_063904_000040133098_00336_46471_4058.N1	0	1
5	MIP_NL__0PNPDK20110119_074458_000061193098_00337_46472_4059.N1	0	1
6	MIP_NL__0PNPDK20110119_092519_000059603098_00338_46473_4060.N1	0	1
7	MIP_NL__0PNPDK20110119_110255_000061153098_00339_46474_4061.N1	0	1
8	MIP_NL__0PNPDK20110119_124352_000059183098_00340_46475_4062.N1	0	1
9	MIP_NL__0PNPDK20110119_142115_000060193098_00341_46476_4063.N1	0	1
10	MIP_NL__0PNPDK20110119_160048_000058393098_00342_46477_4064.N1	0	1
11	MIP_NL__0PNPDK20110119_173706_000060423098_00343_46478_4065.N1	0	1
12	MIP_NL__0PNPDK20110119_191604_000059773098_00344_46479_4066.N1	0	1
13	MIP_NL__0PNPDE20110119_205333_000045403098_00345_46480_2748.N1	0	1
14	MIP_NL__0PNPDE20110119_220808_000060613098_00345_46480_2749.N1	0	1
15	MIP_NL__0PNPDE20110119_234802_000059563098_00346_46481_2750.N1	0	1

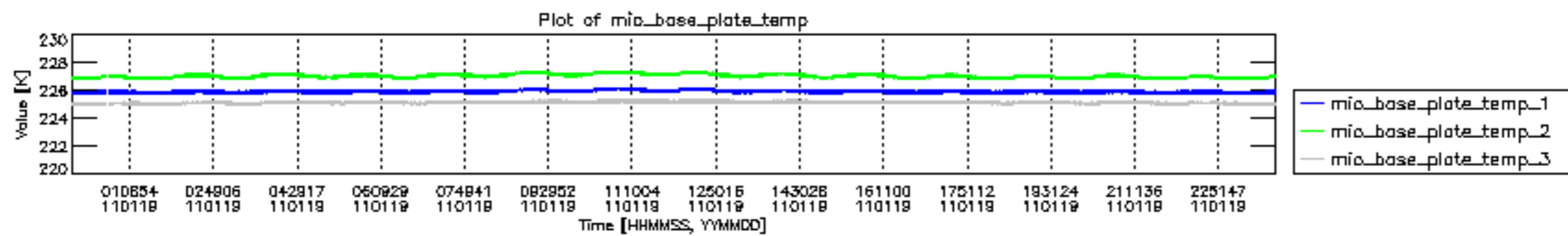


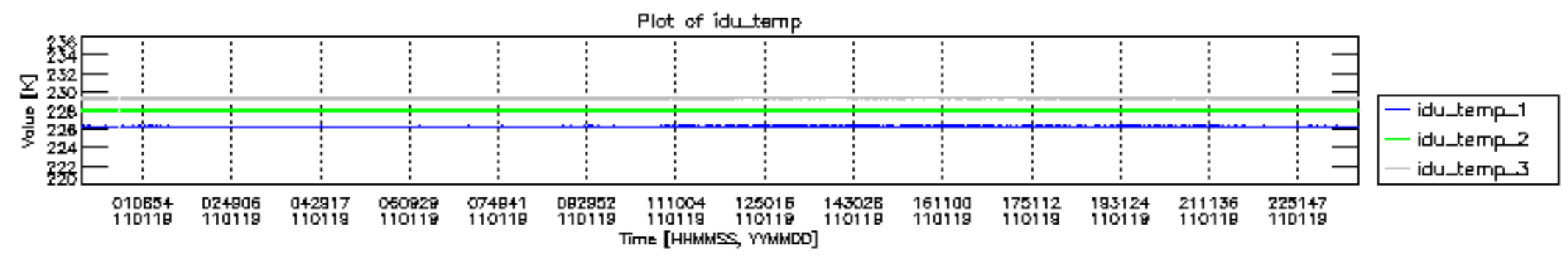
mipas_daily_report_level0_KSPT_L0_4504_N_20110119_12.PNG

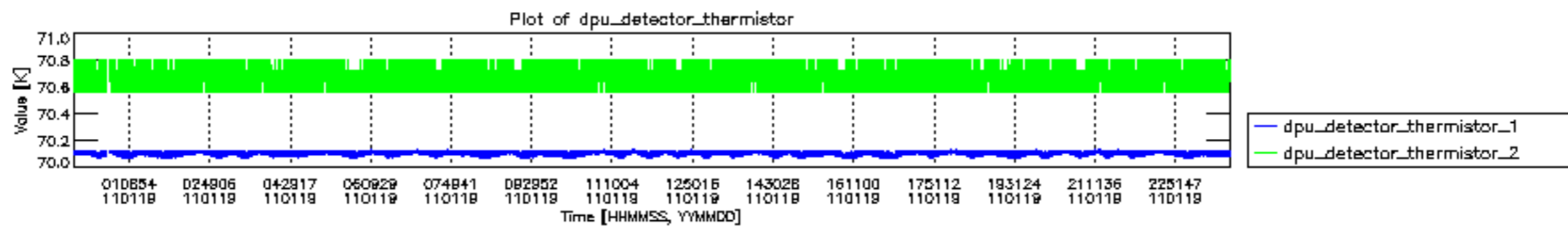


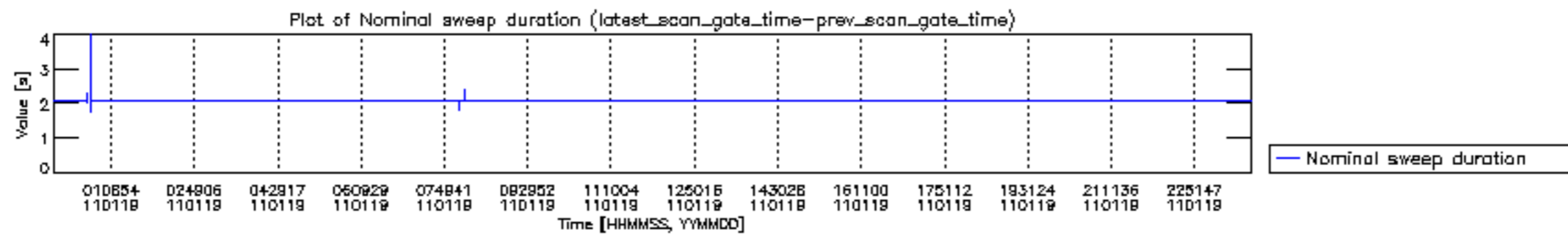
mipas_daily_report_level0_KSPT_L0_4504_N_20110119_13.PNG

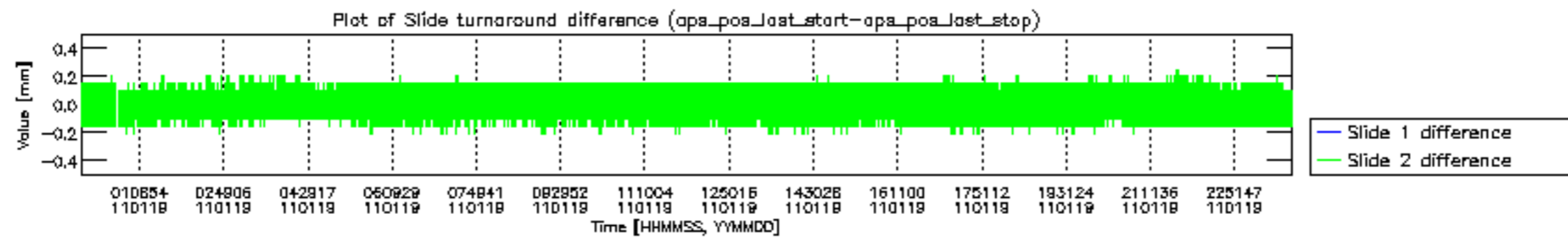


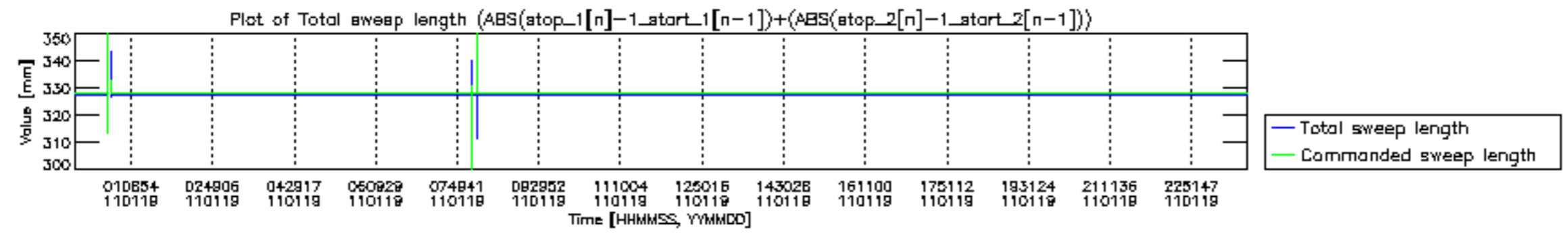


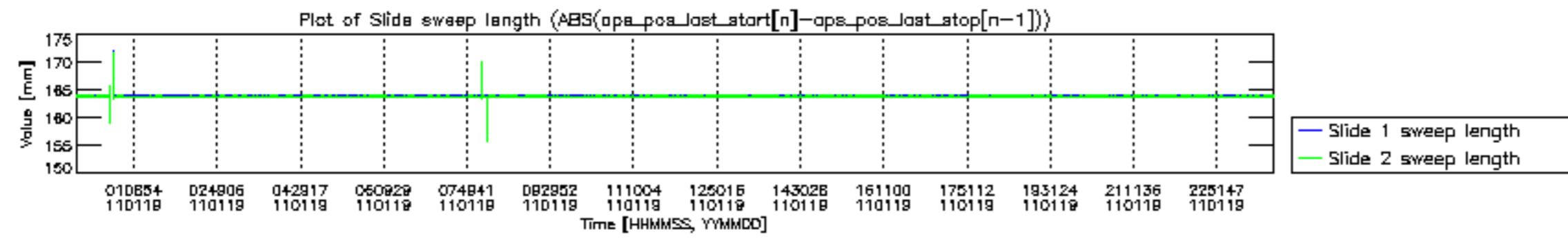


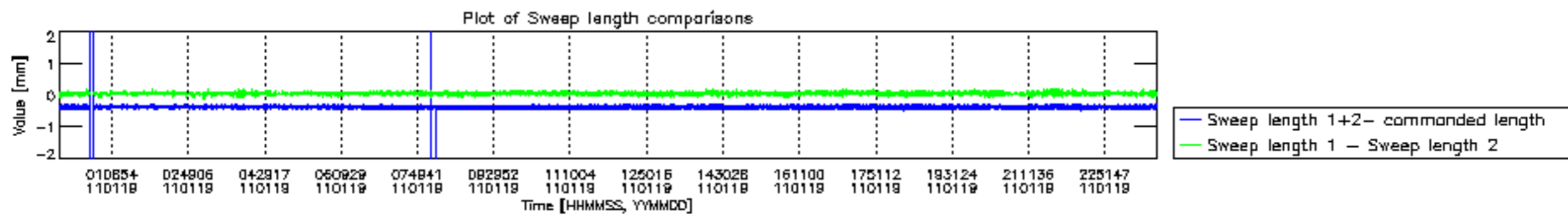


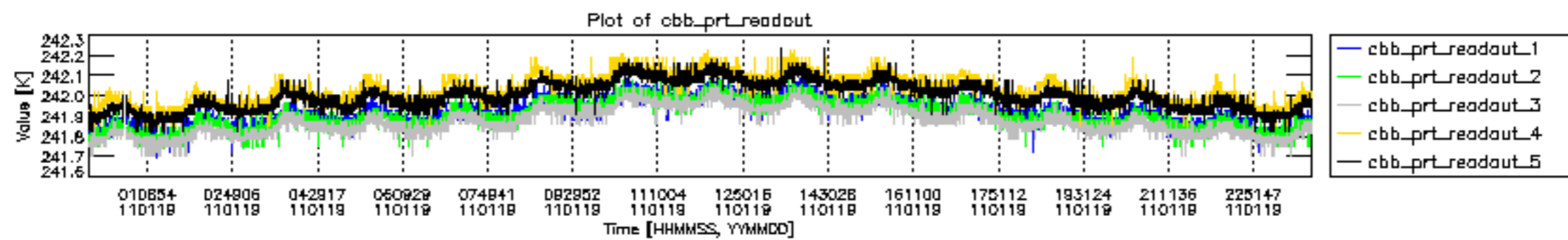


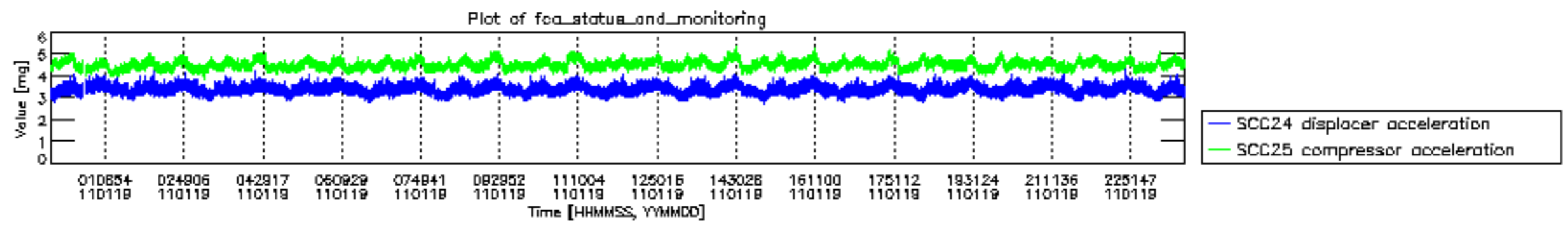












MIPNLOP_MIPSOUPAC_aux_fields_igm_cal, channel statistics plot
 Colour indicates value.

