

## 0. MIPAS Daily Report for level 0 products

### [0.1 General Info](#)

### [0.2 Instrument Operational Performance Parameters](#)

### [0.3 ADF monitoring](#)

## 0.1 General Info

This report contains a daily analysis on parameters extracted from MIPAS level 0 data (The MIP\_NL\_\_0P product).

### 0.1.1 Report summary

The table below shows general characteristics of the data that are included into this report.

Item	Value
Report version	v1.6 08-11-2010
Time of report generation	19JAN2011 05:24:34
Data source version	KSPT_L0/4504-N
Processing scope for products	14JAN2011 00:00:00 to 15JAN2011 00:00:00
Start time of first product within scope	14JAN2011 00:07:19
Stop time of last product within scope	15JAN2011 01:12:49
Total number of level 0 products	15
Number of level 0 products with errors	0

### 0.1.2 Product Quality Indicators per product

The following table shows a summary for each product used in this report.

#	Product name	Start time	Stop time	Prod err	ISP err sign	ISP miss sign	ISP disc sign	rs sign
0	MIP_NL__OPNPDE20110114_000719_000009773098_00260_46395_2711.N1	14JAN2011 00:07:19	14JAN2011 00:23:35	0	0	0	0	0
1	MIP_NL__OPNPDE20110114_040814_000020223098_00263_46398_2712.N1	14JAN2011 04:08:14	14JAN2011 04:41:56	0	0	0	0	0
2	MIP_NL__OPNPDE20110114_044125_000060483098_00263_46398_2713.N1	14JAN2011 04:41:25	14JAN2011 06:22:13	0	0	0	0	0
3	MIP_NL__OPNPDK20110114_062139_000040133098_00264_46399_4017.N1	14JAN2011 06:21:39	14JAN2011 07:28:32	0	0	0	0	0
4	MIP_NL__OPNPDK20110114_072736_000060733098_00265_46400_4018.N1	14JAN2011 07:27:36	14JAN2011 09:08:49	0	0	0	0	0
5	MIP_NL__OPNPDK20110114_090725_000061753098_00266_46401_4019.N1	14JAN2011 09:07:25	14JAN2011 10:50:20	0	0	0	0	0
6	MIP_NL__OPNPDK20110114_104838_000059123098_00267_46402_4020.N1	14JAN2011 10:48:38	14JAN2011 12:27:10	0	0	0	0	0
7	MIP_NL__OPNPDK20110114_122610_000060273098_00268_46403_4021.N1	14JAN2011 12:26:10	14JAN2011 14:06:37	0	0	0	0	0
8	MIP_NL__OPNPDK20110114_140534_000059563098_00269_46404_4022.N1	14JAN2011 14:05:34	14JAN2011 15:44:50	0	0	0	0	0
9	MIP_NL__OPNPDK20110114_154404_000058373098_00270_46405_4023.N1	14JAN2011 15:44:04	14JAN2011 17:21:21	0	0	0	0	0
10	MIP_NL__OPNPDK20110114_172020_000059683098_00271_46406_4024.N1	14JAN2011 17:20:20	14JAN2011 18:59:49	0	0	0	0	0
11	MIP_NL__OPNPDK20110114_185758_000060063098_00272_46407_4025.N1	14JAN2011 18:57:58	14JAN2011 20:38:04	0	0	0	0	0
12	MIP_NL__OPNPDE20110114_203622_000045543098_00273_46408_2714.N1	14JAN2011 20:36:22	14JAN2011 21:52:16	0	0	0	0	0
13	MIP_NL__OPNPDE20110114_215111_000060443098_00273_46408_2715.N1	14JAN2011 21:51:11	14JAN2011 23:31:55	0	0	0	0	0
14	MIP_NL__OPNPDE20110114_233050_000061193098_00274_46409_2716.N1	14JAN2011 23:30:50	15JAN2011 01:12:49	0	0	0	0	0

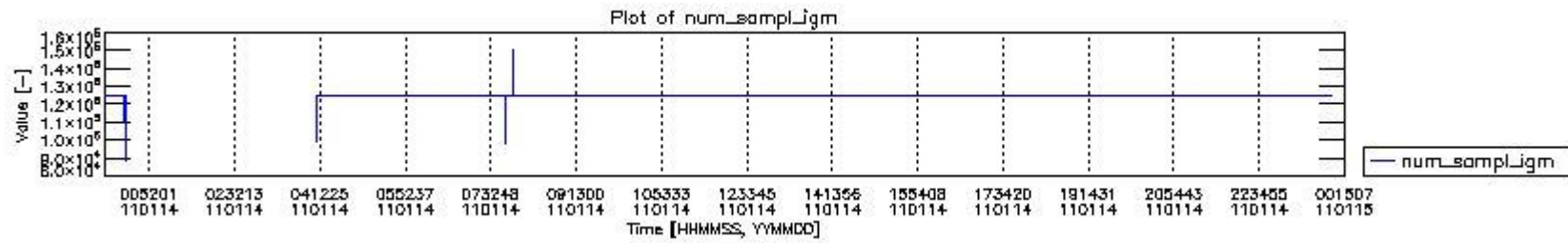
## 0.2 Instrument Operational Performance Parameters

The following plots give an overview of various instrument parameters for this day. The instrument parameters are part of the auxiliary data field within the source packets of the MIP\_NL\_\_0P product. The auxiliary data is normally included twice per interferogram. Note that only the first packet is currently included in monitoring.

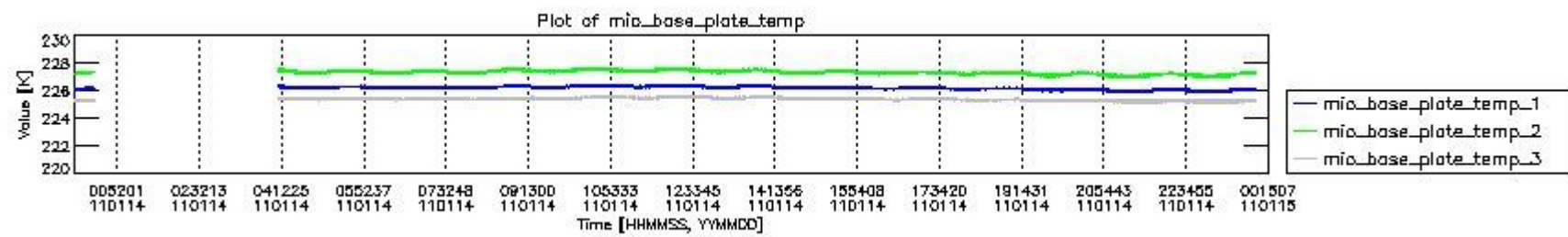
The following table shows the counts of various interferogram number of samples

Number of igm samples	Count [#]	Count [%]
88096	1	0.0028462458
96382	1	0.0028462458
98504	1	0.0028462458

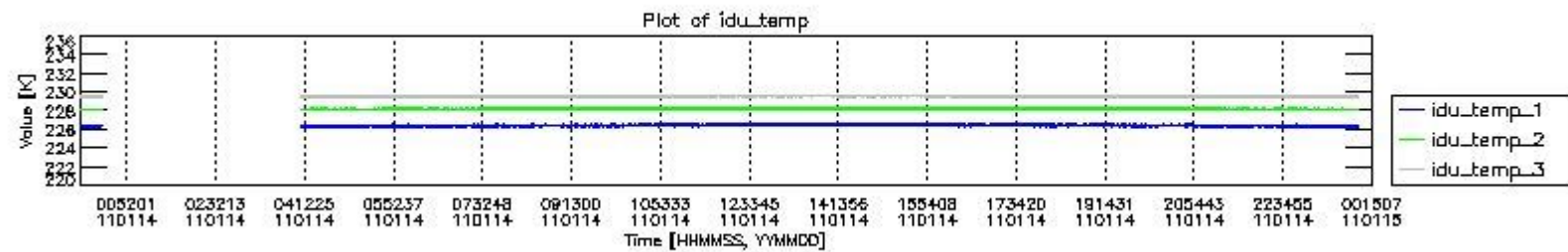
99293	1	0.0028462458
101586	1	0.0028462458
116514	1	0.0028462458
121718	1	0.0028462458
124290	1	0.0028462458
124545	1	0.0028462458
124800	33121	94.270507
124803	2001	5.6953378
127456	1	0.0028462458
147588	1	0.0028462458
150244	1	0.0028462458



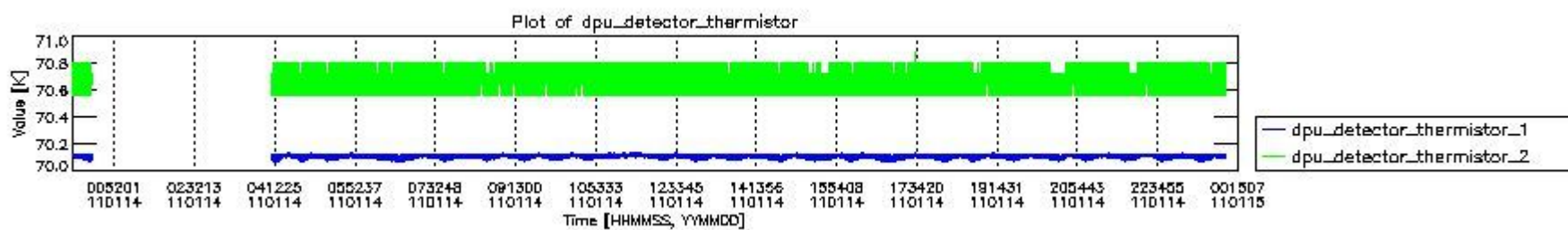
mipas\_daily\_report\_level0\_KSPT\_L0\_4504\_N\_20110114\_0.PNG



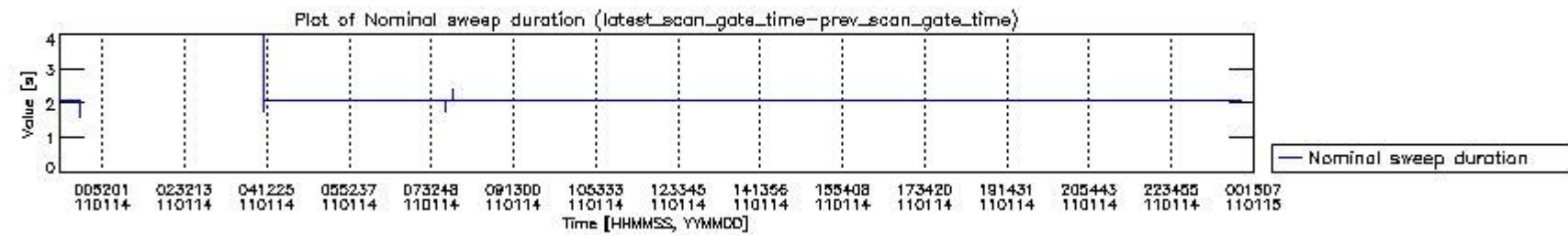
mipas\_daily\_report\_level0\_KSPT\_L0\_4504\_N\_20110114\_1.PNG



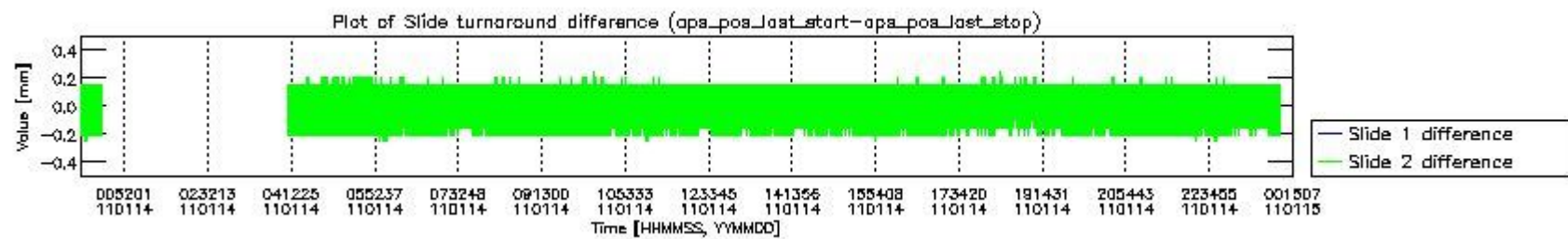
mipas\_daily\_report\_level0\_KSPT\_L0\_4504\_N\_20110114\_2.PNG



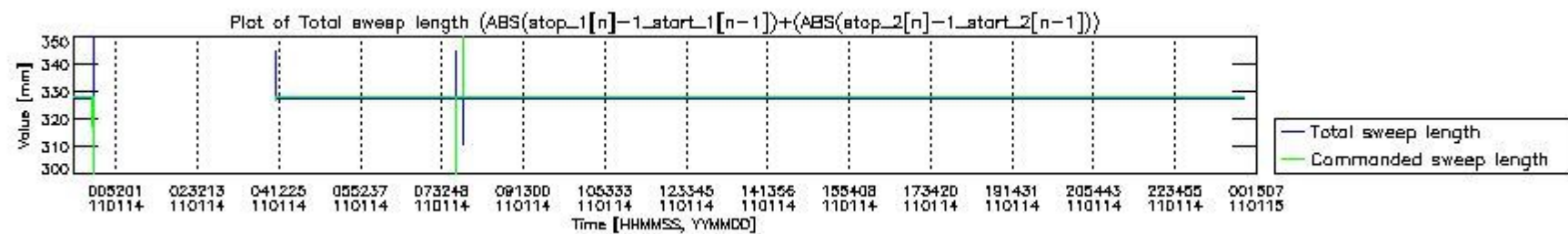
mipas\_daily\_report\_level0\_KSPT\_L0\_4504\_N\_20110114\_3.PNG



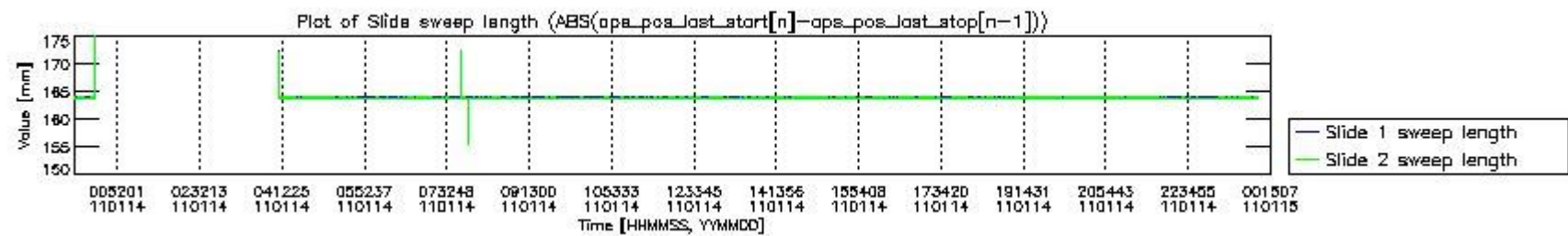
mipas\_daily\_report\_level0\_KSPT\_L0\_4504\_N\_20110114\_4.PNG



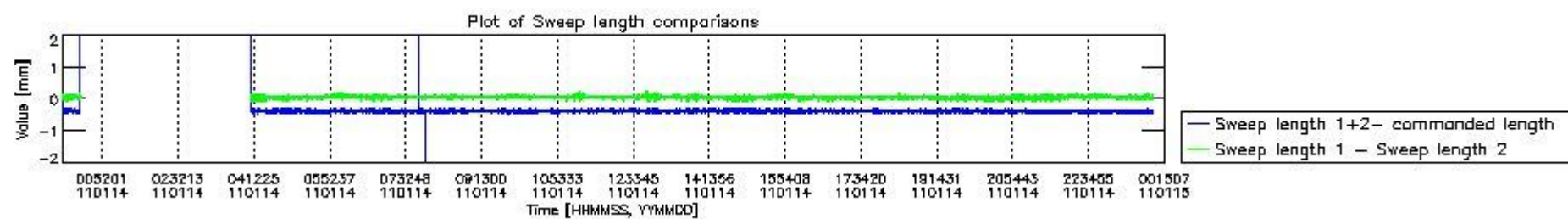
mipas\_daily\_report\_level0\_KSPT\_L0\_4504\_N\_20110114\_5.PNG



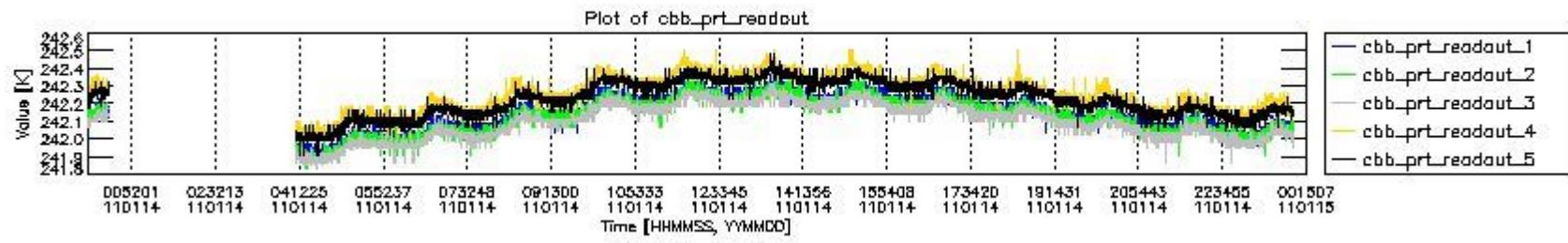
mipas\_daily\_report\_level0\_KSPT\_L0\_4504\_N\_20110114\_6.PNG



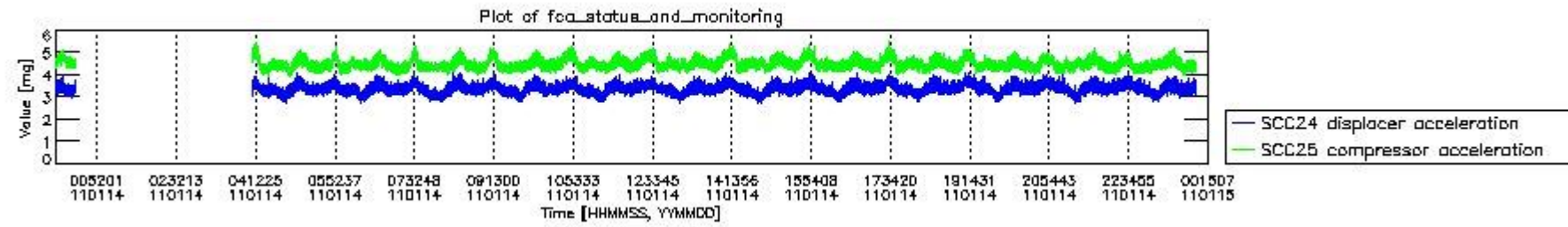
mipas\_daily\_report\_level0\_KSPT\_L0\_4504\_N\_20110114\_7.PNG



mipas\_daily\_report\_level0\_KSPT\_L0\_4504\_N\_20110114\_8.PNG



mipas\_daily\_report\_level0\_KSPT\_L0\_4504\_N\_20110114\_9.PNG



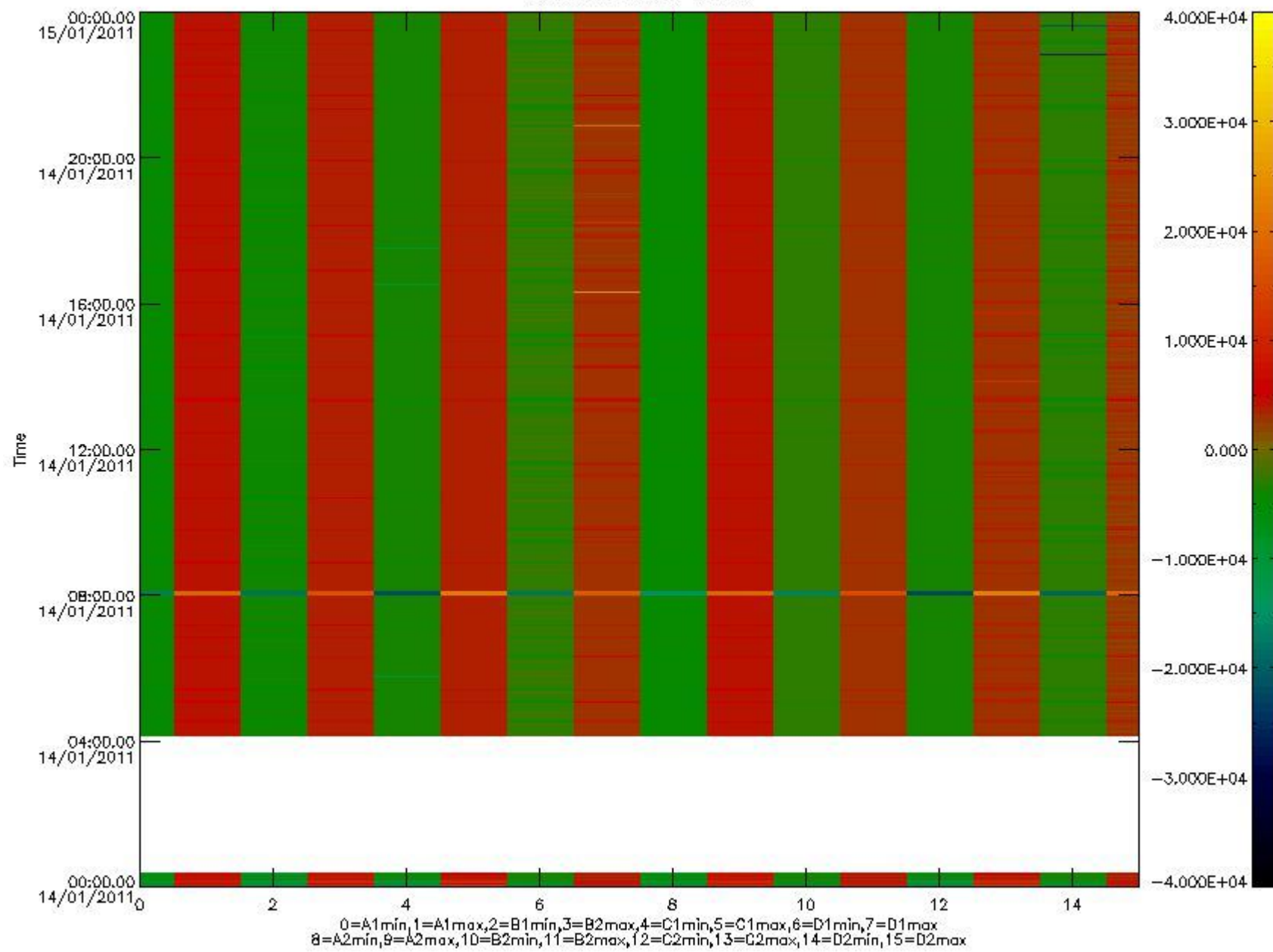
mipas\_daily\_report\_level0\_KSPT\_L0\_4504\_N\_20110114\_10.PNG

The following table shows channel statistics for all channels for this day.

Channel	Min	Max	ADC
A1	-17695	18773	16bit
B1	-19128	16623	16bit
C1	-23028	22359	16bit
D1	-22436	32767	16bit
A2	-15326	18861	16bit
B2	-17187	16908	16bit
C2	-24333	23023	16bit
D2	-32768	24747	16bit



MIPNLOP\_MIPSOUPAC\_aux\_fields\_igm\_cal, channel statistics plot  
Colour indicates value.



mipas\_daily\_report\_level0\_KSPT\_L0\_4504\_N\_20110114\_11.PNG

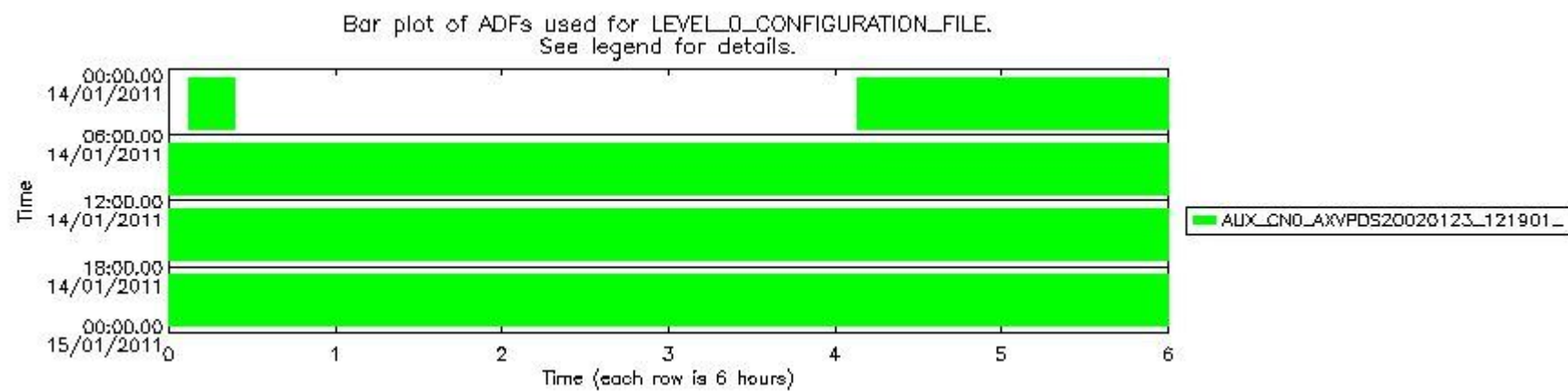
### 0.3 ADF monitoring

The use of ADFs is shown in two ways:

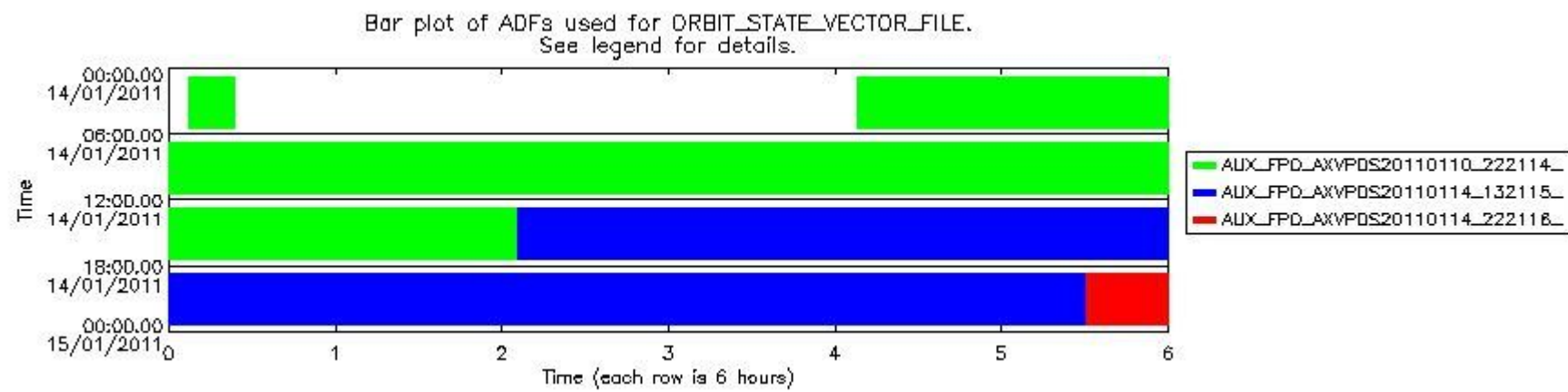
1. By means of two tables that can be used to find the ADF used for a specific product.
2. By means of plots that show changes in ADF using colours.

Number	ADF
0	AUX_CN0_AXVPDS20020123_121901_20020101_000000_20200101_000000
1	AUX_FPO_AXVPDS20110110_222114_20110110_192915_20110120_200253
2	AUX_FPO_AXVPDS20110114_132115_20110113_191918_20110123_213310
3	AUX_FPO_AXVPDS20110114_222116_20110113_091753_20110123_113146

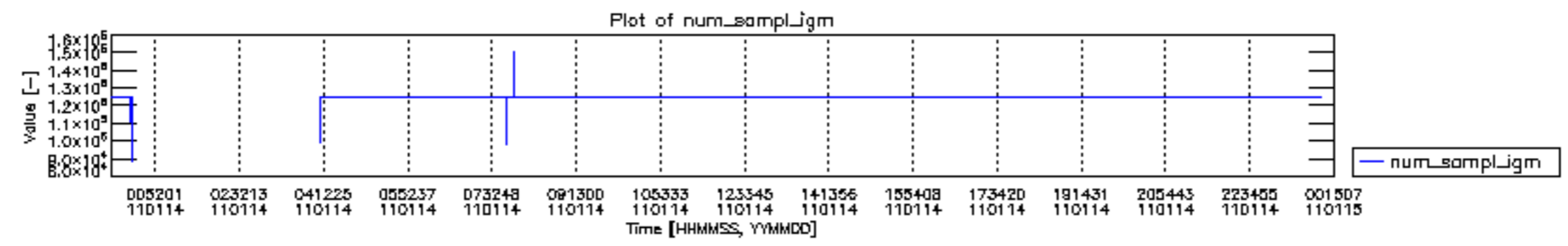
Number	Product name	#CNO	#FPO
0	MIP_NL__0PNPDE20110114_000719_000009773098_00260_46395_2711.N1	0	1
1	MIP_NL__0PNPDE20110114_040814_000020223098_00263_46398_2712.N1	0	1
2	MIP_NL__0PNPDE20110114_044125_000060483098_00263_46398_2713.N1	0	1
3	MIP_NL__0PNPDK20110114_062139_000040133098_00264_46399_4017.N1	0	1
4	MIP_NL__0PNPDK20110114_072736_000060733098_00265_46400_4018.N1	0	1
5	MIP_NL__0PNPDK20110114_090725_000061753098_00266_46401_4019.N1	0	1
6	MIP_NL__0PNPDK20110114_104838_000059123098_00267_46402_4020.N1	0	1
7	MIP_NL__0PNPDK20110114_122610_000060273098_00268_46403_4021.N1	0	1
8	MIP_NL__0PNPDK20110114_140534_000059563098_00269_46404_4022.N1	0	2
9	MIP_NL__0PNPDK20110114_154404_000058373098_00270_46405_4023.N1	0	2
10	MIP_NL__0PNPDK20110114_172020_000059683098_00271_46406_4024.N1	0	2
11	MIP_NL__0PNPDK20110114_185758_000060063098_00272_46407_4025.N1	0	2
12	MIP_NL__0PNPDE20110114_203622_000045543098_00273_46408_2714.N1	0	2
13	MIP_NL__0PNPDE20110114_215111_000060443098_00273_46408_2715.N1	0	2
14	MIP_NL__0PNPDE20110114_233050_000061193098_00274_46409_2716.N1	0	3

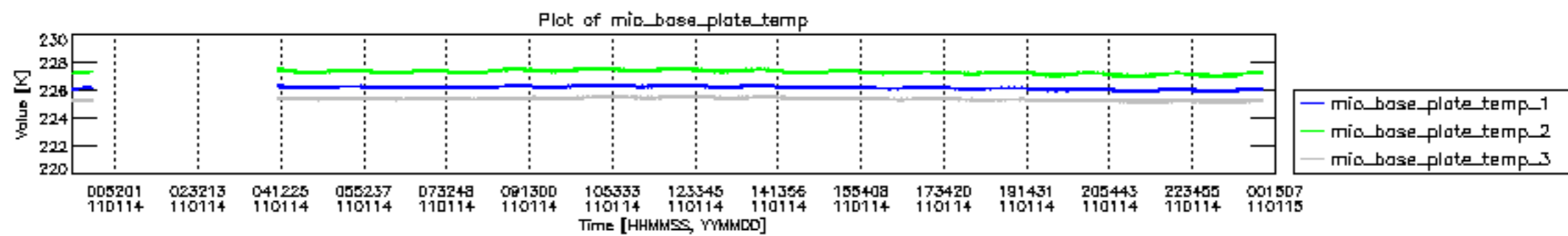


mipas\_daily\_report\_level0\_KSPT\_L0\_4504\_N\_20110114\_12.PNG

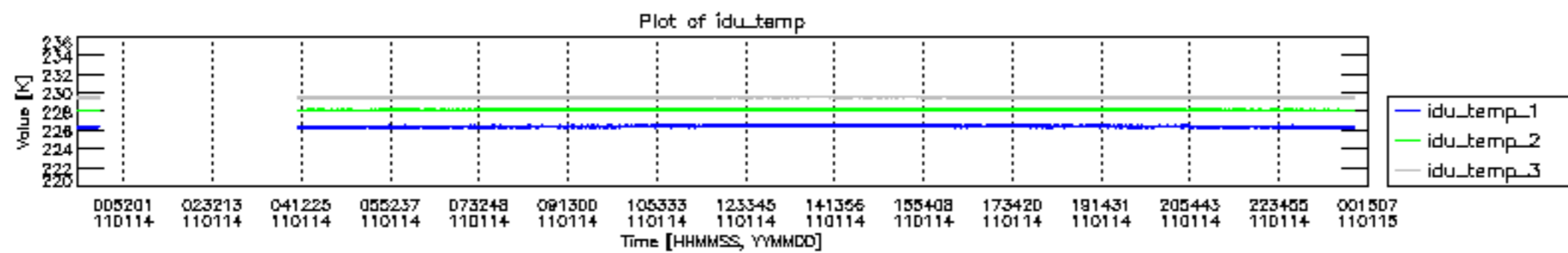


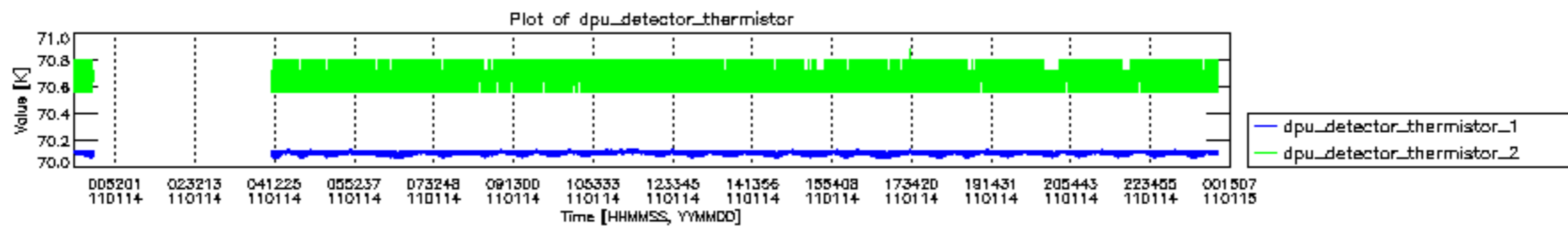
mipas\_daily\_report\_level0\_KSPT\_L0\_4504\_N\_20110114\_13.PNG

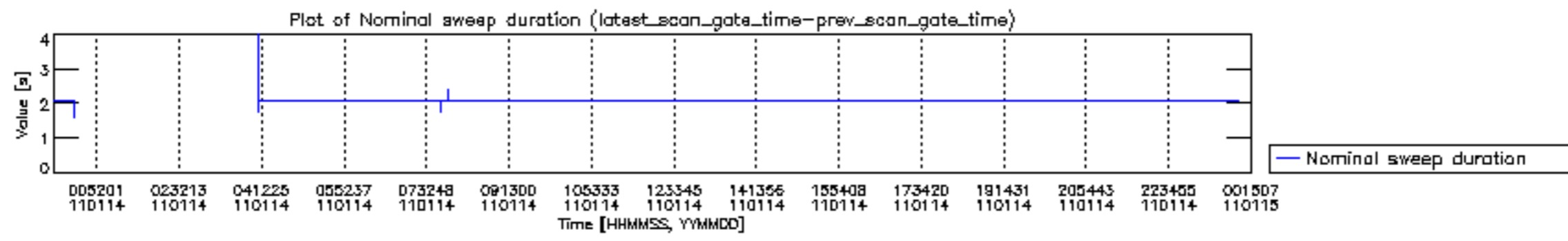


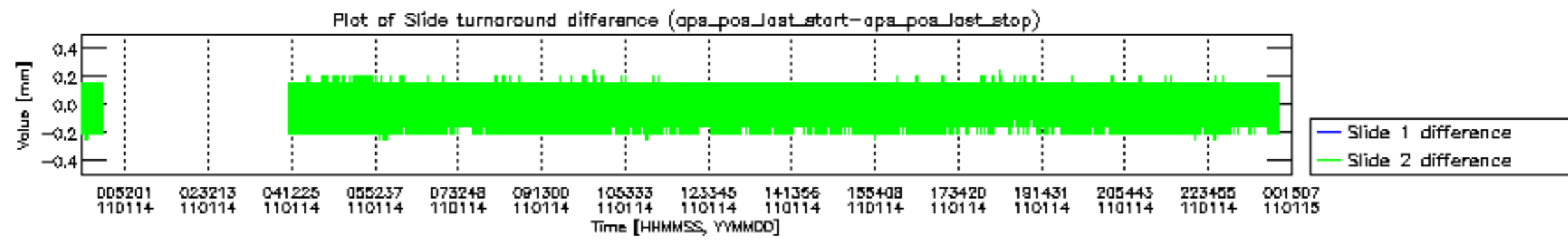


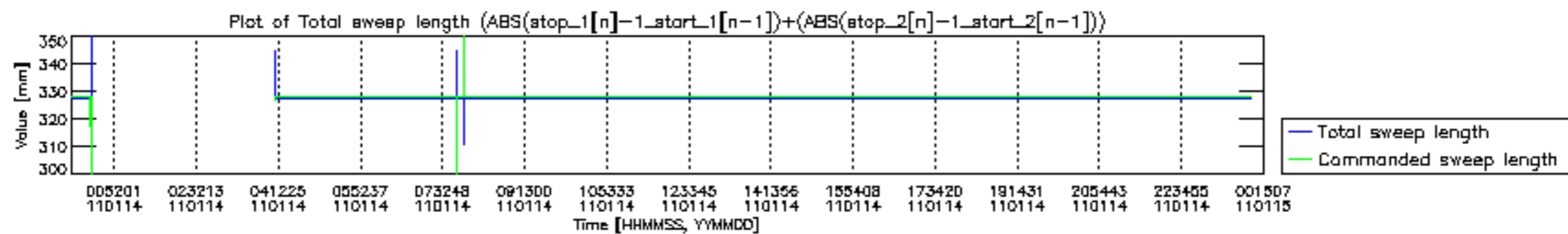




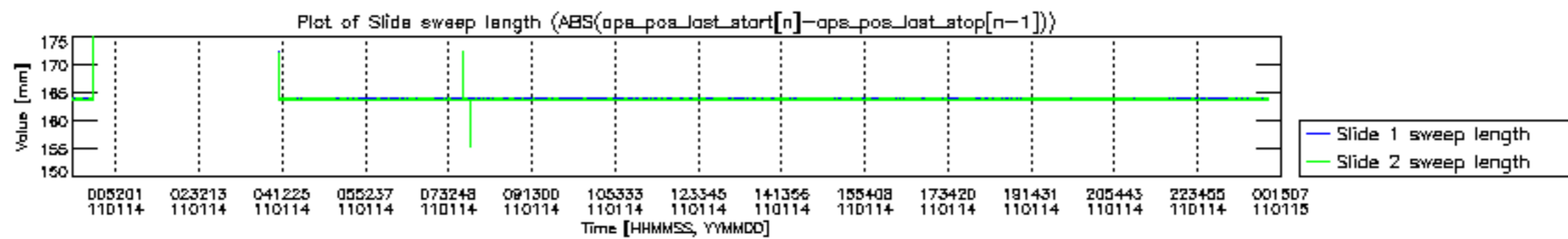


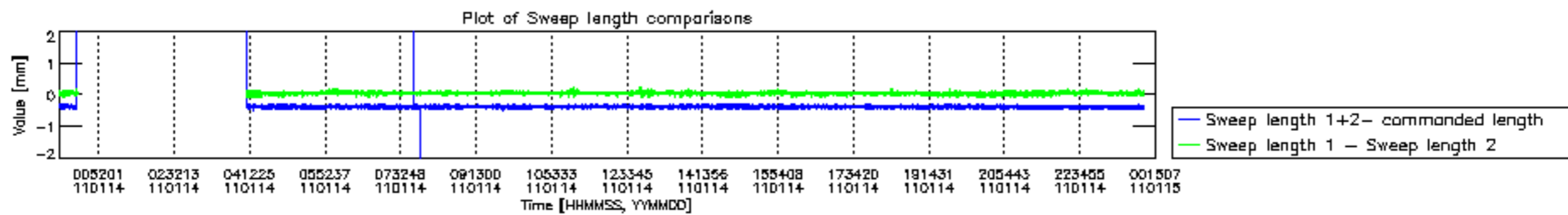


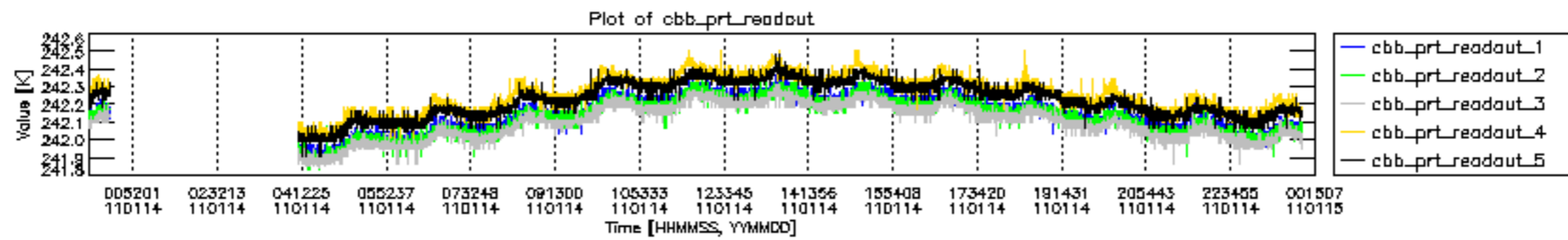


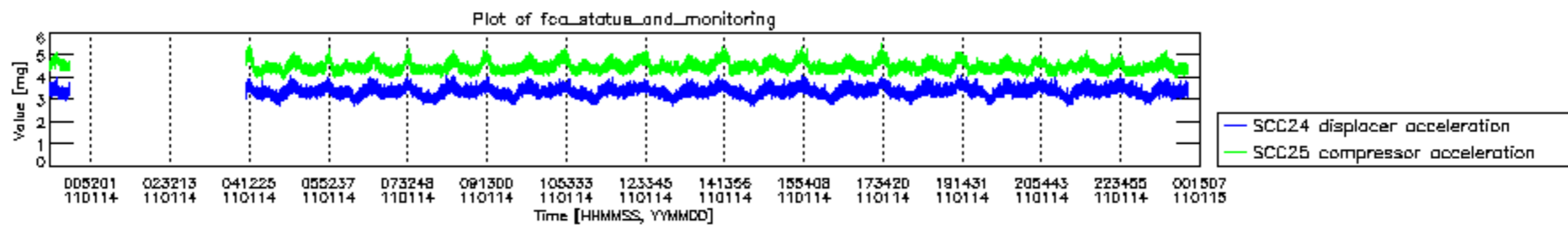












MIPNLOP\_MIPSOUPAC\_aux\_fields\_igm\_cal, channel statistics plot  
 Colour indicates value.





