

0. MIPAS Daily Report for level 0 products

[0.1 General Info](#)

[0.2 Instrument Operational Performance Parameters](#)

[0.3 ADF monitoring](#)

0.1 General Info

This report contains a daily analysis on parameters extracted from MIPAS level 0 data (The MIP_NL__0P product).

0.1.1 Report summary

The table below shows general characteristics of the data that are included into this report.

Item	Value
Report version	v1.6 08-11-2010
Time of report generation	11JAN2011 05:24:31
Data source version	KSPT_L0/4504-N
Processing scope for products	06JAN2011 00:00:00 to 07JAN2011 00:00:00
Start time of first product within scope	06JAN2011 00:01:33
Stop time of last product within scope	07JAN2011 01:05:22
Total number of level 0 products	15
Number of level 0 products with errors	0

0.1.2 Product Quality Indicators per product

The following table shows a summary for each product used in this report.

#	Product name	Start time	Stop time	Prod err	ISP err sign	ISP miss sign	ISP disc sign	rs sign
0	MIP_NL__OPNPDE20110106_000133_000059833098_00145_46280_2659.N1	06JAN2011 00:01:33	06JAN2011 01:41:16	0	0	0	0	0
1	MIP_NL__OPNPDE20110106_014019_000043313098_00146_46281_2660.N1	06JAN2011 01:40:19	06JAN2011 02:52:30	0	0	0	0	0
2	MIP_NL__OPNPDE20110106_025156_000061903098_00147_46282_2661.N1	06JAN2011 02:51:56	06JAN2011 04:35:06	0	0	0	0	0
3	MIP_NL__OPNPDE20110106_043433_000060753098_00148_46283_2662.N1	06JAN2011 04:34:33	06JAN2011 06:15:48	0	0	0	0	0
4	MIP_NL__OPNPDK20110106_061516_000023353098_00149_46284_3907.N1	06JAN2011 06:15:16	06JAN2011 06:54:12	0	0	0	0	0
5	MIP_NL__OPNPDK20110106_101236_000017093098_00151_46286_3908.N1	06JAN2011 10:12:36	06JAN2011 10:41:05	0	0	0	0	0
6	MIP_NL__OPNPDK20110106_103949_000060953098_00152_46287_3909.N1	06JAN2011 10:39:49	06JAN2011 12:21:24	0	0	0	0	0
7	MIP_NL__OPNPDK20110106_122017_000060063098_00153_46288_3910.N1	06JAN2011 12:20:17	06JAN2011 14:00:23	0	0	0	0	0
8	MIP_NL__OPNPDK20110106_135927_000059333098_00154_46289_3911.N1	06JAN2011 13:59:27	06JAN2011 15:38:20	0	0	0	0	0
9	MIP_NL__OPNPDK20110106_153746_000057843098_00155_46290_3912.N1	06JAN2011 15:37:46	06JAN2011 17:14:11	0	0	0	0	0
10	MIP_NL__OPNPDK20110106_171312_000060163098_00156_46291_3913.N1	06JAN2011 17:13:12	06JAN2011 18:53:29	0	0	0	0	0
11	MIP_NL__OPNPDK20110106_185146_000060333098_00157_46292_3914.N1	06JAN2011 18:51:46	06JAN2011 20:32:19	0	0	0	0	0
12	MIP_NL__OPNPDE20110106_203031_000044353098_00158_46293_2663.N1	06JAN2011 20:30:31	06JAN2011 21:44:26	0	0	0	0	0
13	MIP_NL__OPNPDE20110106_214311_000061153098_00158_46293_2664.N1	06JAN2011 21:43:11	06JAN2011 23:25:05	0	0	0	0	0
14	MIP_NL__OPNPDE20110106_232400_000060813098_00159_46294_2665.N1	06JAN2011 23:24:00	07JAN2011 01:05:22	0	0	0	0	0

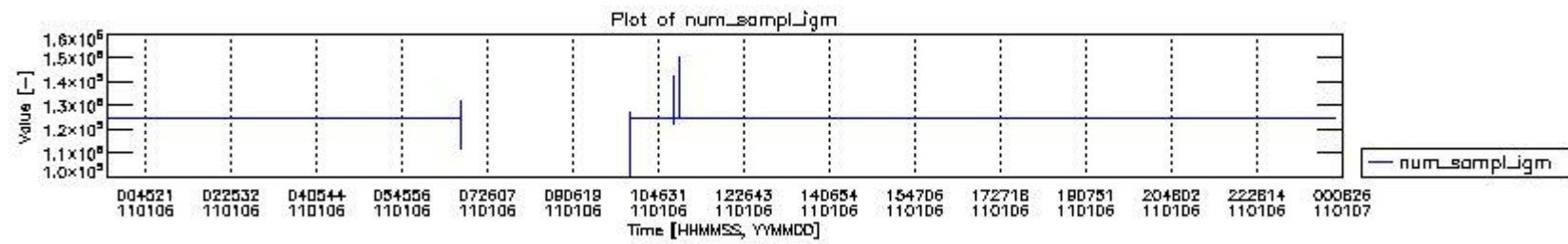
0.2 Instrument Operational Performance Parameters

The following plots give an overview of various instrument parameters for this day. The instrument parameters are part of the auxiliary data field within the source packets of the MIP_NL__0P product. The auxiliary data is normally included twice per interferogram. Note that only the first packet is currently included in monitoring.

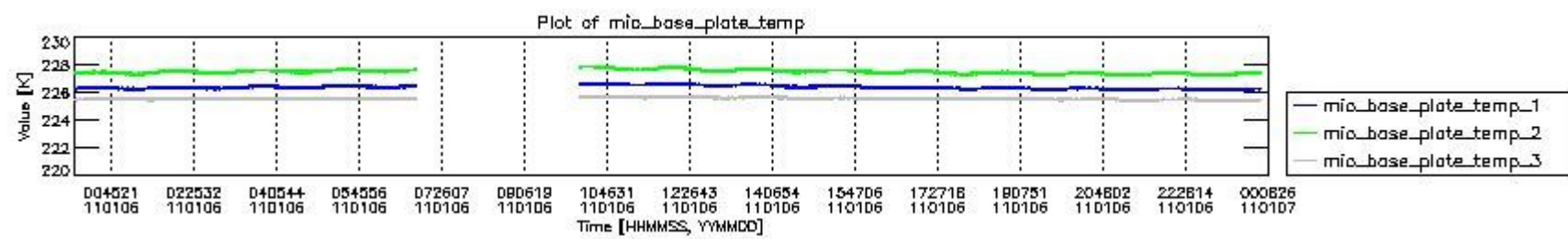
The following table shows the counts of various interferogram number of samples

Number of igm samples	Count [#]	Count [%]
100706	1	0.0027887780
111845	1	0.0027887780
119022	1	0.0027887780

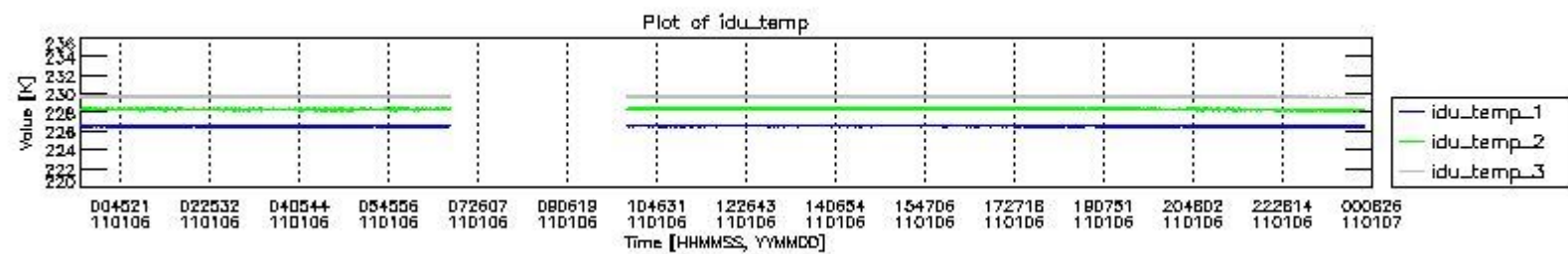
122104	1	0.0027887780
124800	33308	92.888616
124803	2538	7.0779185
125958	1	0.0027887780
127116	1	0.0027887780
127382	1	0.0027887780
131977	1	0.0027887780
139540	1	0.0027887780
142236	1	0.0027887780
147514	1	0.0027887780
150096	1	0.0027887780



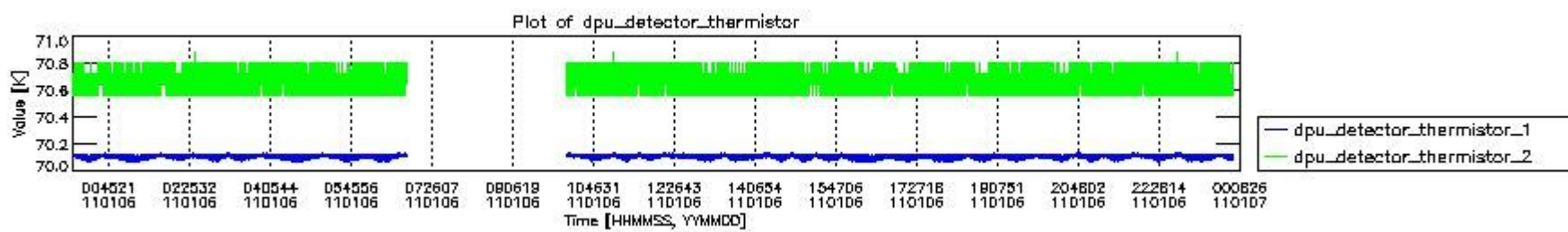
mipas_daily_report_level0_KSPT_L0_4504_N_20110106_0.PNG



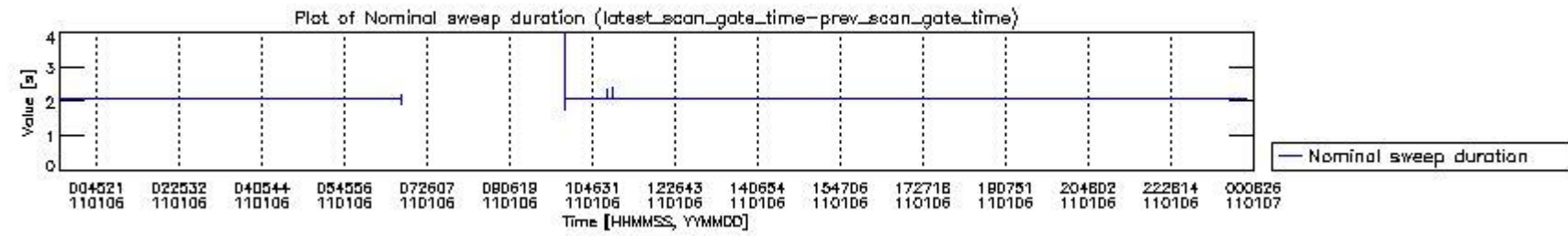
mipas_daily_report_level0_KSPT_L0_4504_N_20110106_1.PNG



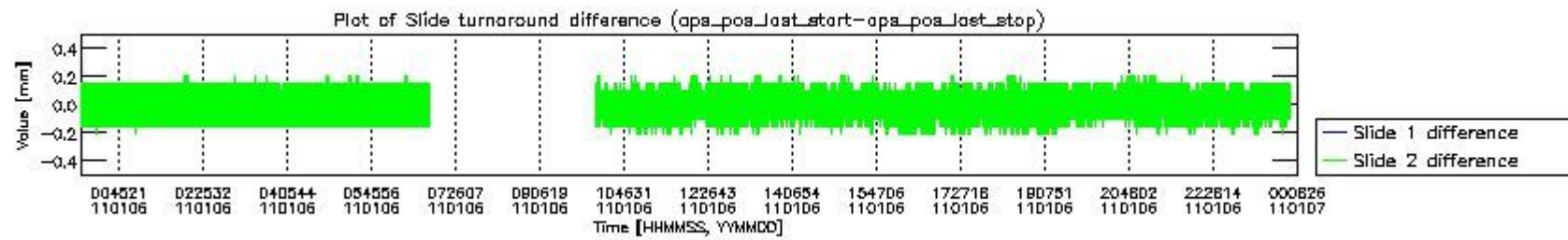
mipas_daily_report_level0_KSPT_L0_4504_N_20110106_2.PNG



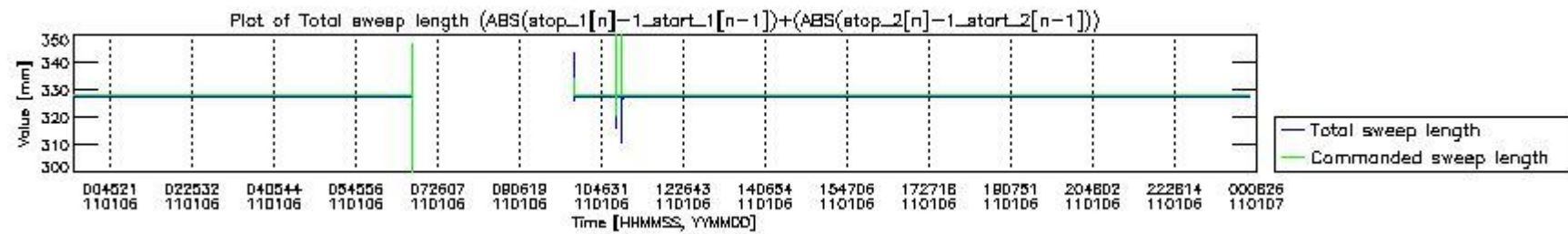
mipas_daily_report_level0_KSPT_L0_4504_N_20110106_3.PNG



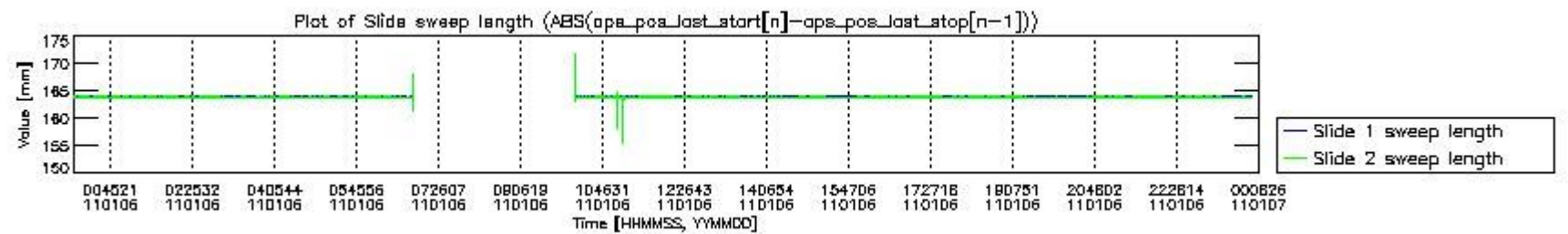
mipas_daily_report_level0_KSPT_L0_4504_N_20110106_4.PNG



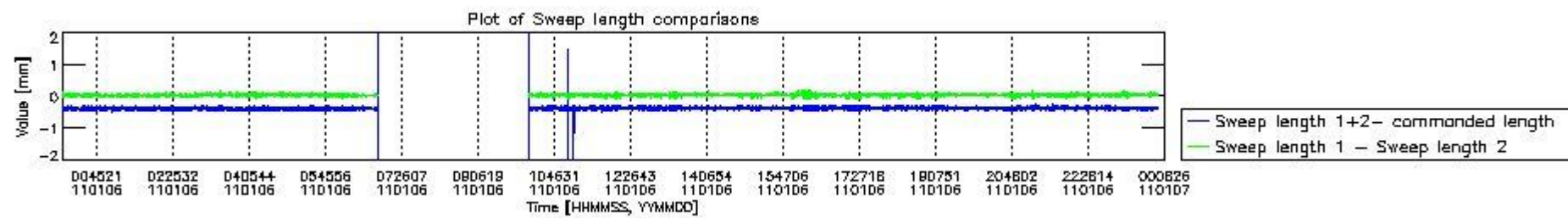
mipas_daily_report_level0_KSPT_L0_4504_N_20110106_5.PNG



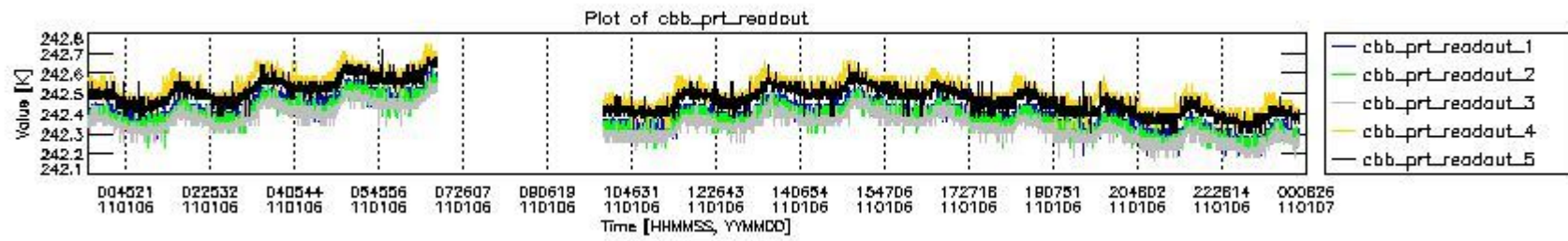
mipas_daily_report_level0_KSPT_L0_4504_N_20110106_6.PNG



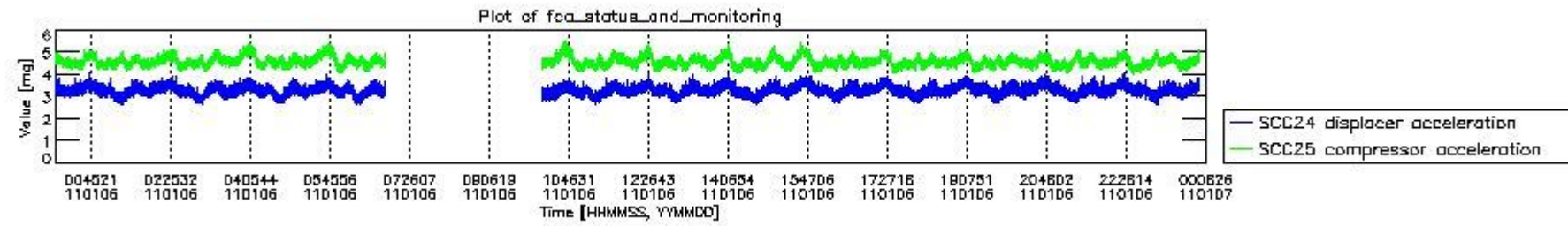
mipas_daily_report_level0_KSPT_L0_4504_N_20110106_7.PNG



mipas_daily_report_level0_KSPT_L0_4504_N_20110106_8.PNG



mipas_daily_report_level0_KSPT_L0_4504_N_20110106_9.PNG

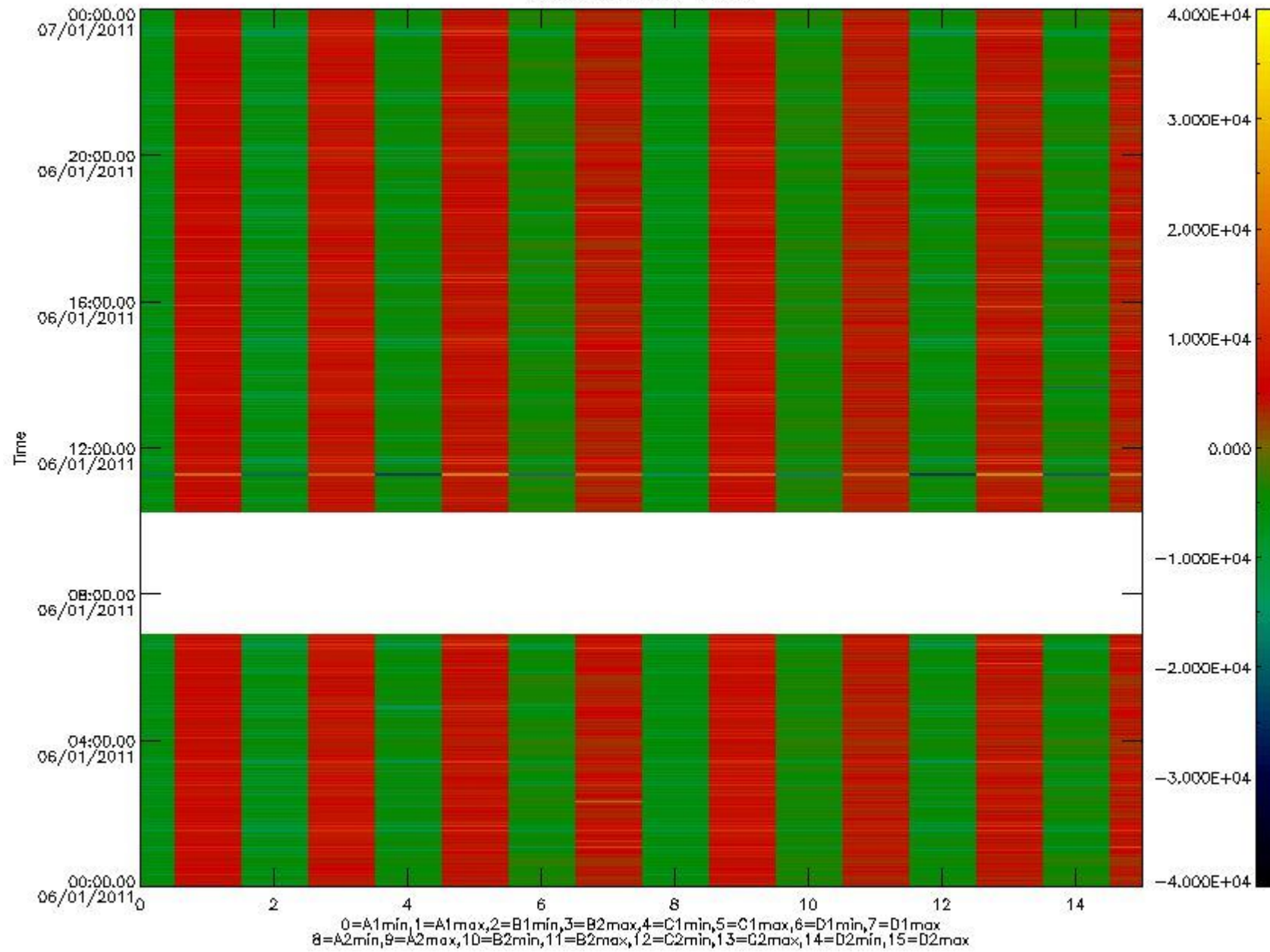


mipas_daily_report_level0_KSPT_L0_4504_N_20110106_10.PNG

The following table shows channel statistics for all channels for this day.

Channel	Min	Max	ADC
A1	-32768	32767	16bit
B1	-32768	32767	16bit
C1	-23815	22671	16bit
D1	-32768	32767	16bit
A2	-32768	28249	16bit
B2	-32768	32767	16bit
C2	-23679	23500	16bit
D2	-32768	32767	16bit

MIPNLOP_MIPSOUPAC_aux_fields_igm_cal, channel statistics plot
Colour indicates value.



mipas_daily_report_level0_KSPT_L0_4504_N_20110106_11.PNG

0.3 ADF monitoring

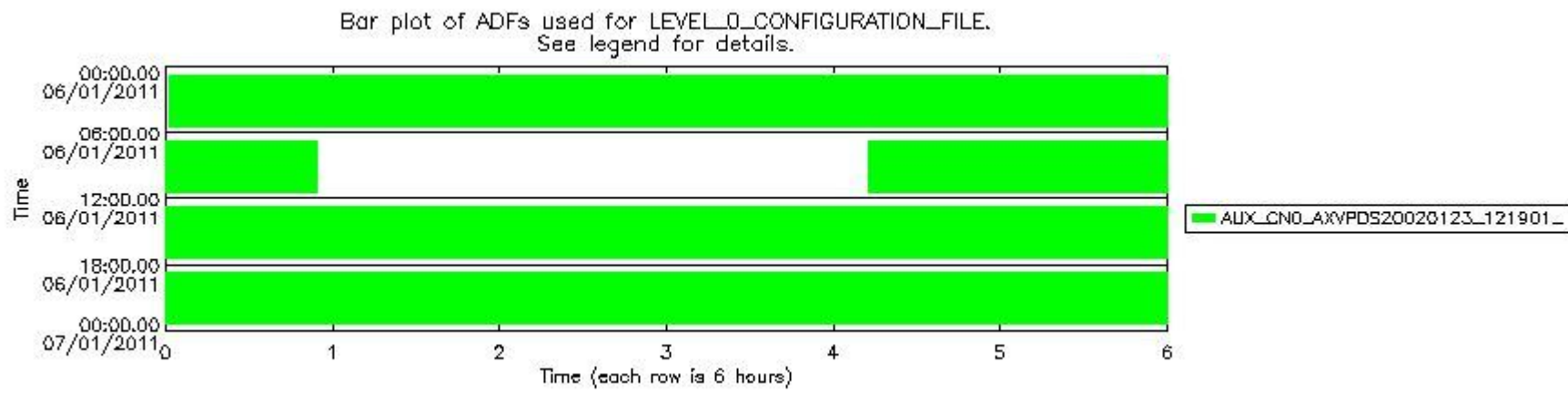
The use of ADFs is shown in two ways:

1. By means of two tables that can be used to find the ADF used for a specific product.
2. By means of plots that show changes in ADF using colours.

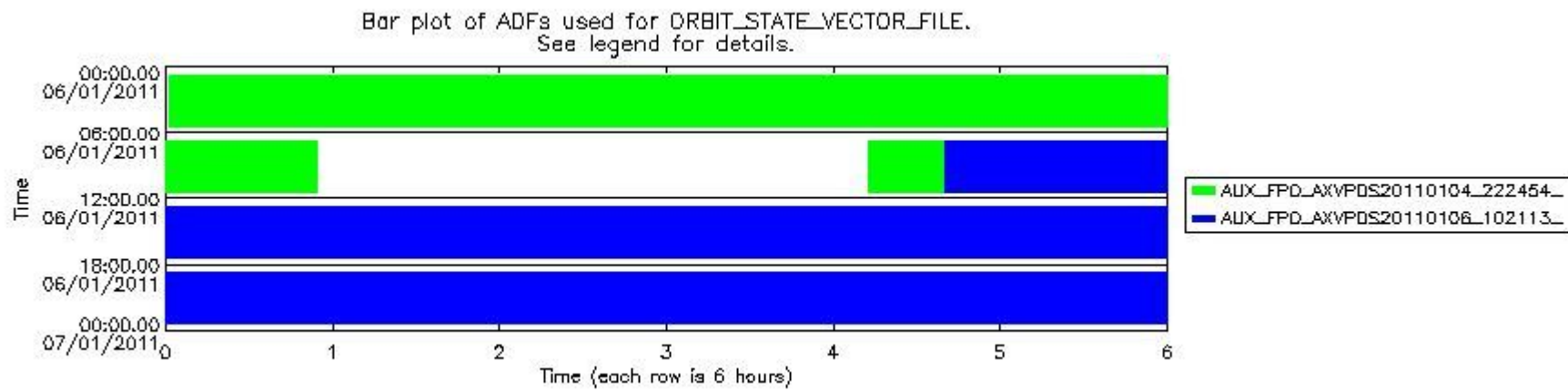
Number	ADF
0	AUX_CN0_AXVPDS20020123_121901_20020101_000000_20200101_000000
1	AUX_FPO_AXVPDS20110104_222454_20110104_194910_20110114_202248
2	AUX_FPO_AXVPDS20110106_102113_20110105_191226_20110115_212618

Number	Product name	#CN0	#FPO
--------	--------------	------	------

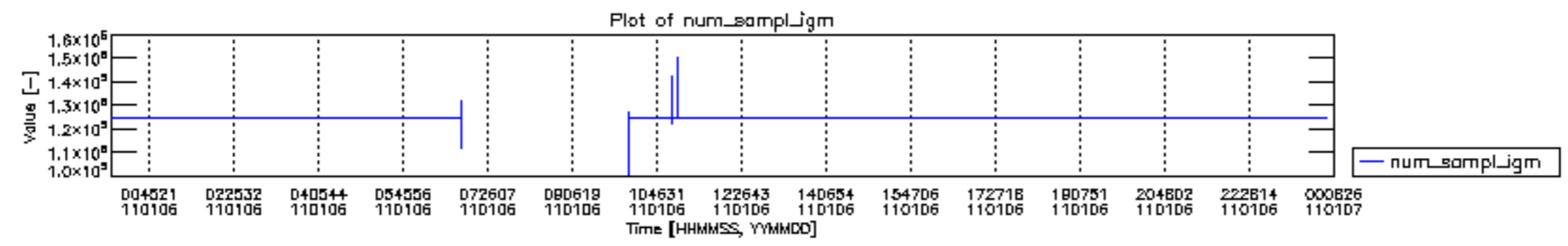
0	MIP_NL__0PNPDE20110106_000133_000059833098_00145_46280_2659.N1	0	1
1	MIP_NL__0PNPDE20110106_014019_000043313098_00146_46281_2660.N1	0	1
2	MIP_NL__0PNPDE20110106_025156_000061903098_00147_46282_2661.N1	0	1
3	MIP_NL__0PNPDE20110106_043433_000060753098_00148_46283_2662.N1	0	1
4	MIP_NL__0PNPDK20110106_061516_000023353098_00149_46284_3907.N1	0	1
5	MIP_NL__0PNPDK20110106_101236_000017093098_00151_46286_3908.N1	0	1
6	MIP_NL__0PNPDK20110106_103949_000060953098_00152_46287_3909.N1	0	2
7	MIP_NL__0PNPDK20110106_122017_000060063098_00153_46288_3910.N1	0	2
8	MIP_NL__0PNPDK20110106_135927_000059333098_00154_46289_3911.N1	0	2
9	MIP_NL__0PNPDK20110106_153746_000057843098_00155_46290_3912.N1	0	2
10	MIP_NL__0PNPDK20110106_171312_000060163098_00156_46291_3913.N1	0	2
11	MIP_NL__0PNPDK20110106_185146_000060333098_00157_46292_3914.N1	0	2
12	MIP_NL__0PNPDE20110106_203031_000044353098_00158_46293_2663.N1	0	2
13	MIP_NL__0PNPDE20110106_214311_000061153098_00158_46293_2664.N1	0	2
14	MIP_NL__0PNPDE20110106_232400_000060813098_00159_46294_2665.N1	0	2

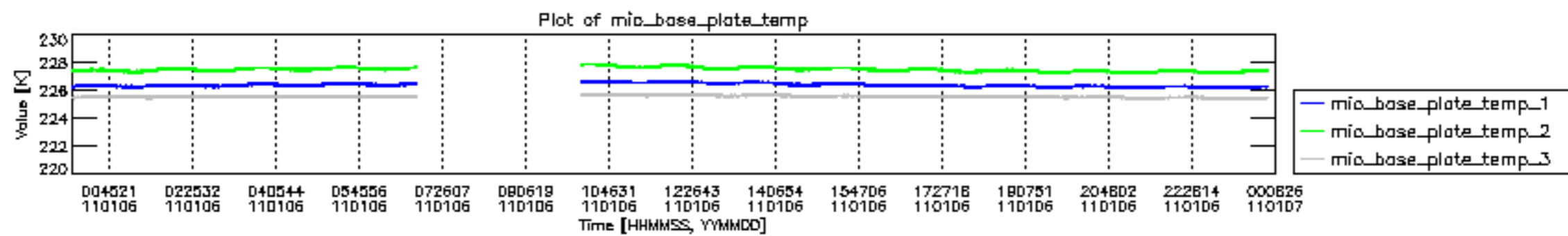


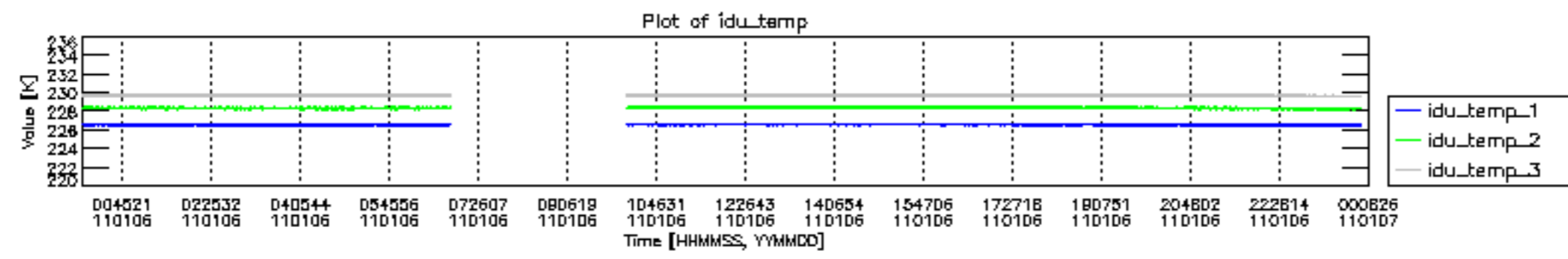
mipas_daily_report_level0_KSPT_L0_4504_N_20110106_12.PNG

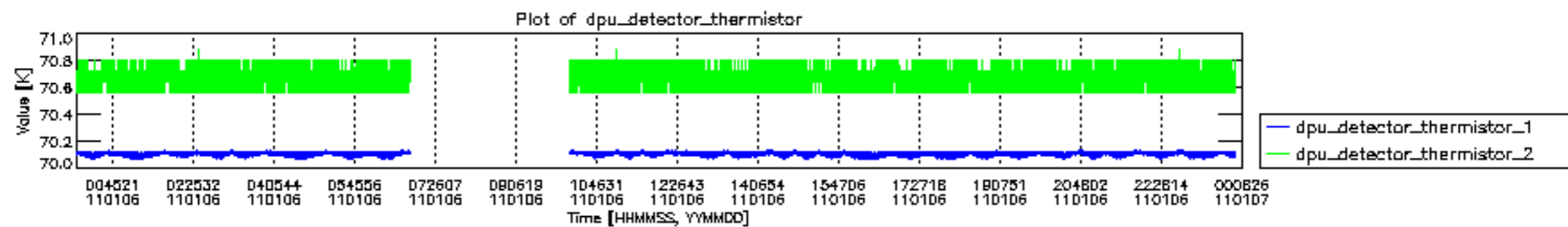


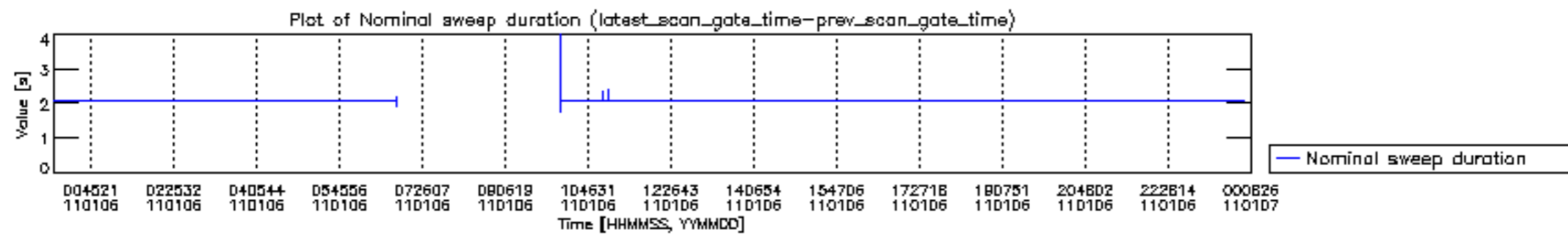
mipas_daily_report_level0_KSPT_L0_4504_N_20110106_13.PNG

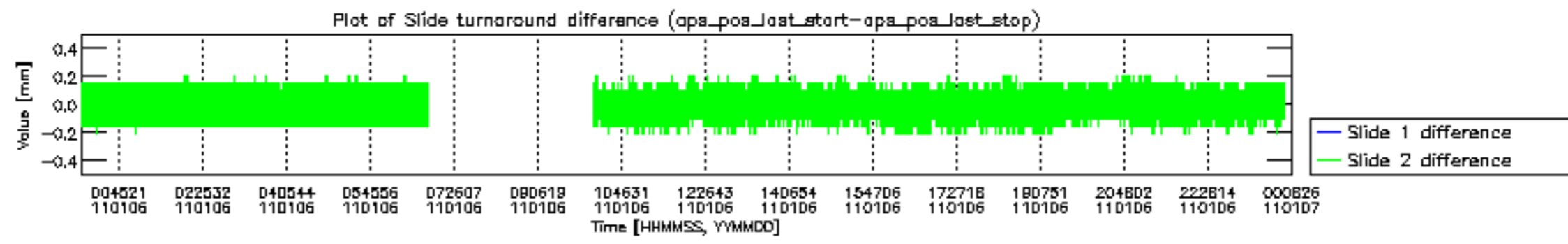


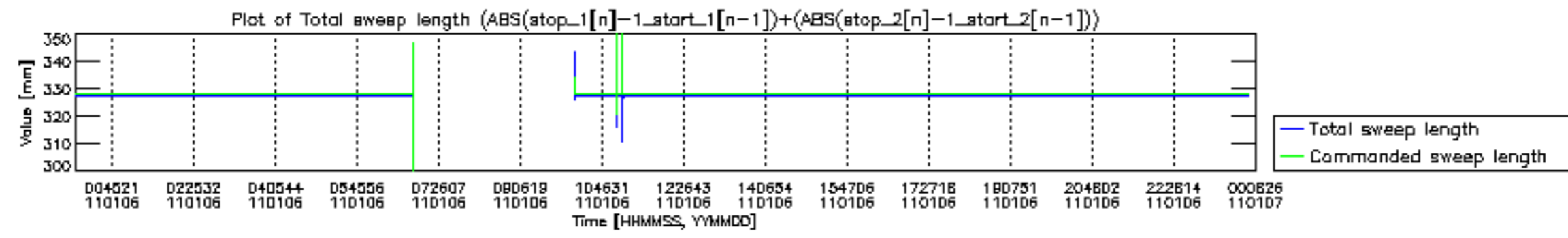


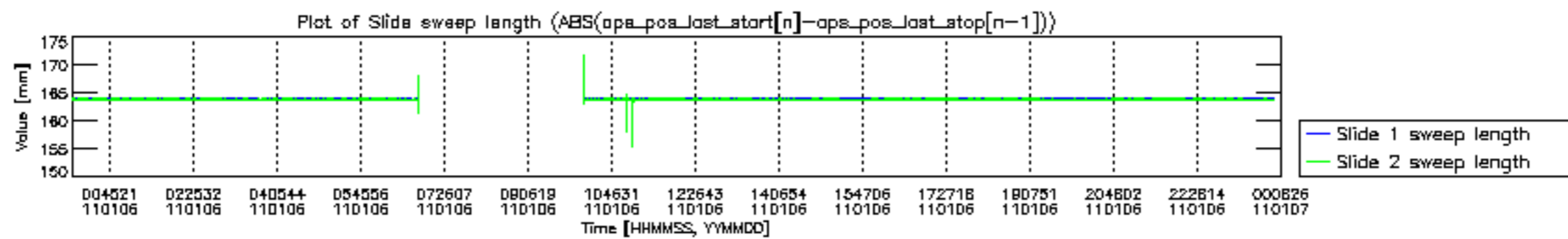


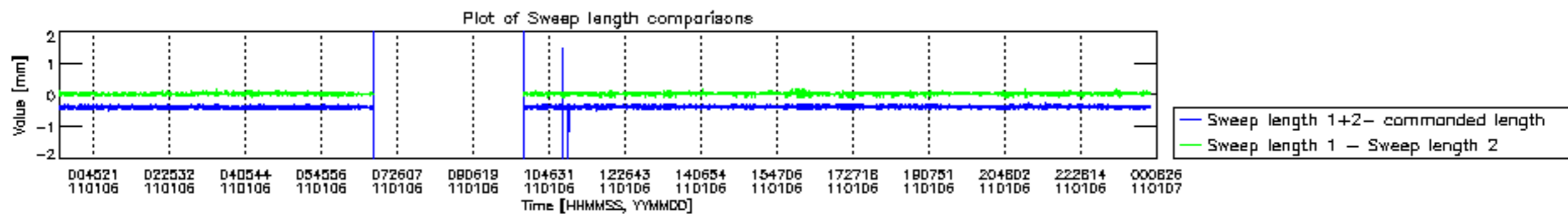


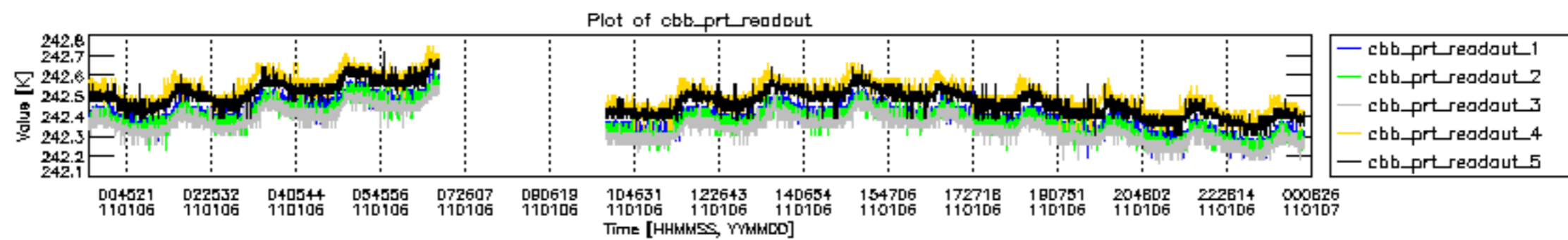


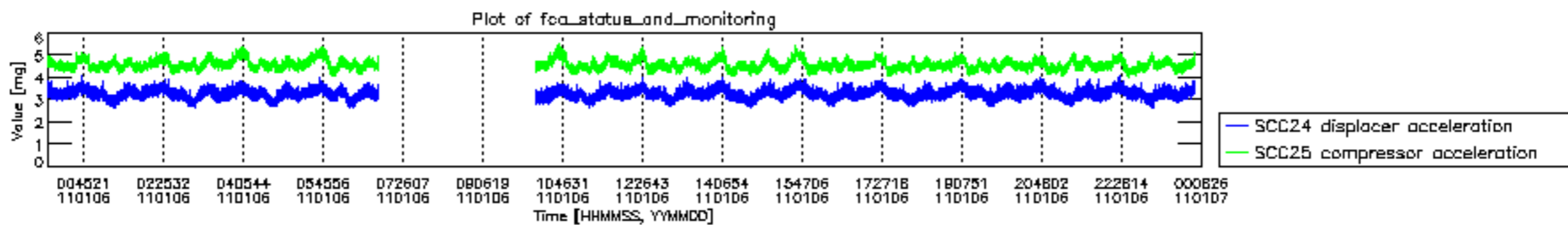




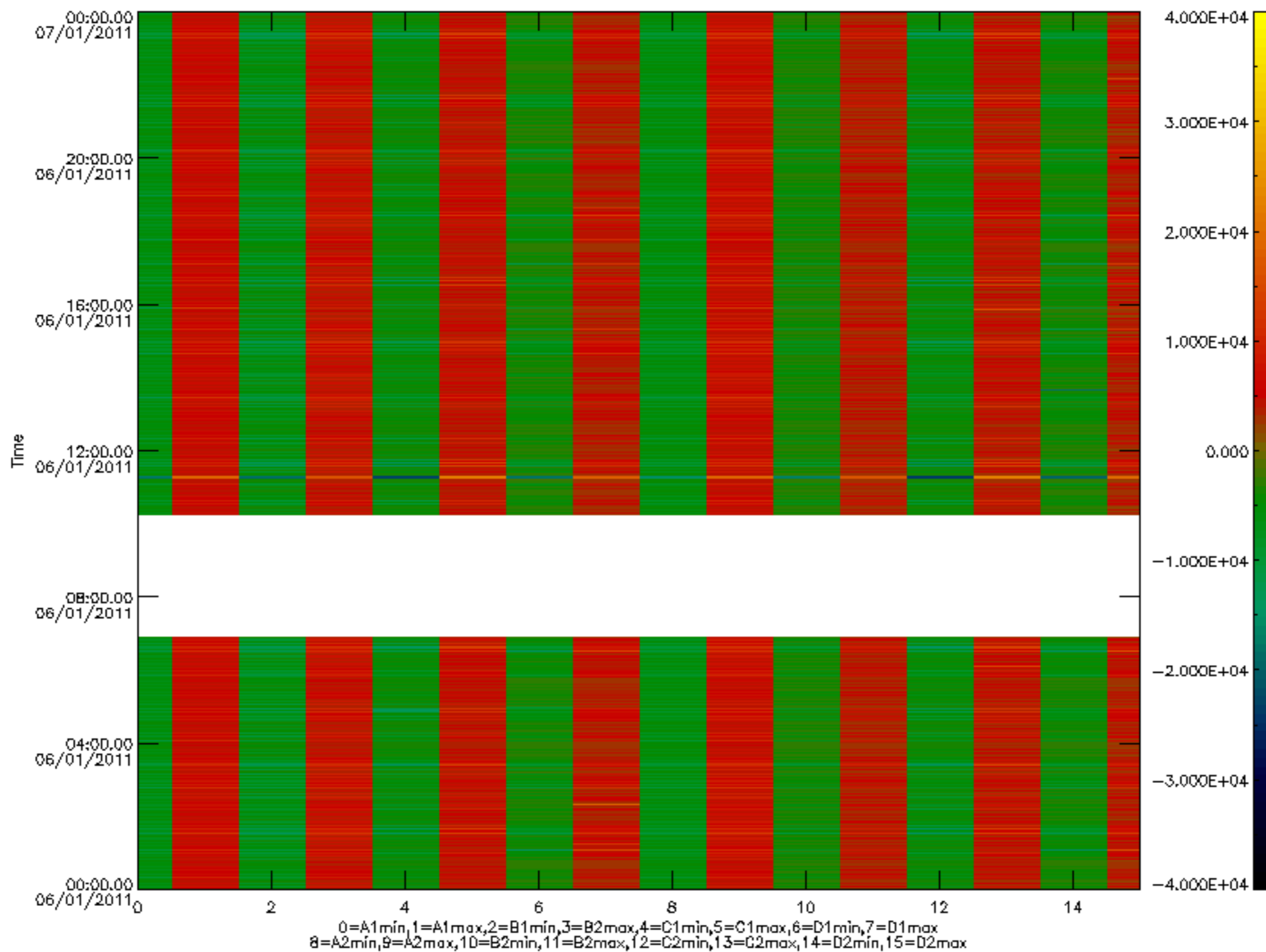


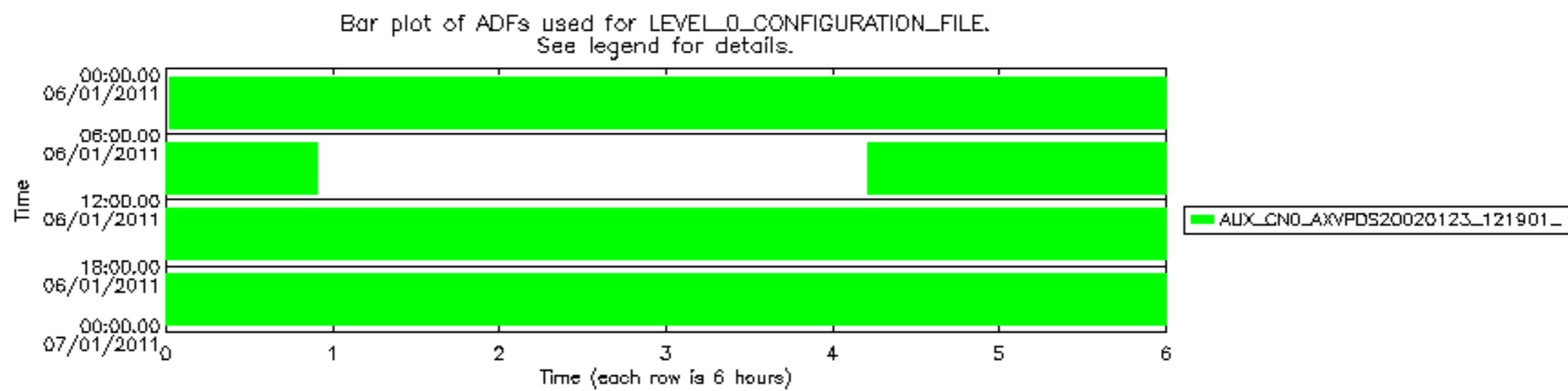






MIPNLOP_MIPSOUPAC_aux_fields_igm_cal, channel statistics plot
 Colour indicates value.





Bar plot of ADFs used for ORBIT_STATE_VECTOR_FILE.
See legend for details.

