

0. MIPAS Daily Report for level 0 products

[0.1 General Info](#)

[0.2 Instrument Operational Performance Parameters](#)

[0.3 ADF monitoring](#)

0.1 General Info

This report contains a daily analysis on parameters extracted from MIPAS level 0 data (The MIP_NL__0P product).

0.1.1 Report summary

The table below shows general characteristics of the data that are included into this report.

Item	Value
Report version	v1.6 08-11-2010
Time of report generation	08JAN2011 05:24:58
Data source version	KSPT_L0/4504-N
Processing scope for products	03JAN2011 00:00:00 to 04JAN2011 00:00:00
Start time of first product within scope	03JAN2011 00:10:26
Stop time of last product within scope	03JAN2011 23:35:30
Total number of level 0 products	15
Number of level 0 products with errors	0

0.1.2 Product Quality Indicators per product

The following table shows a summary for each product used in this report.

#	Product name	Start time	Stop time	Prod err	ISP err sign	ISP miss sign	ISP disc sign	rs sign
0	MIP_NL__0PNPDE20110103_001026_000059773098_00102_46237_2639.N1	03JAN2011 00:10:26	03JAN2011 01:50:02	0	0	0	0	0
1	MIP_NL__0PNPDE20110103_014908_000044043098_00103_46238_2640.N1	03JAN2011 01:49:08	03JAN2011 03:02:32	0	0	0	0	0
2	MIP_NL__0PNPDE20110103_030158_000062113098_00104_46239_2641.N1	03JAN2011 03:01:58	03JAN2011 04:45:29	0	0	0	0	0
3	MIP_NL__0PNPDE20110103_044456_000060443098_00105_46240_2642.N1	03JAN2011 04:44:56	03JAN2011 06:25:39	0	0	0	0	0
4	MIP_NL__0PNPDK20110103_062508_000040303098_00106_46241_3846.N1	03JAN2011 06:25:08	03JAN2011 07:32:18	0	0	0	0	0
5	MIP_NL__0PNPDK20110103_073117_000061403098_00107_46242_3847.N1	03JAN2011 07:31:17	03JAN2011 09:13:37	0	0	0	0	0
6	MIP_NL__0PNPDK20110103_091157_000059593098_00108_46243_3848.N1	03JAN2011 09:11:57	03JAN2011 10:51:16	0	0	0	0	0
7	MIP_NL__0PNPDK20110103_105007_000061383098_00109_46244_3849.N1	03JAN2011 10:50:07	03JAN2011 12:32:24	0	0	0	0	0
8	MIP_NL__0PNPDK20110103_123052_000059813098_00110_46245_3850.N1	03JAN2011 12:30:52	03JAN2011 14:10:33	0	0	0	0	0
9	MIP_NL__0PNPDK20110103_140935_000059603098_00111_46246_3852.N1	03JAN2011 14:09:35	03JAN2011 15:48:55	0	0	0	0	0
10	MIP_NL__0PNPDK20110103_154821_000057893098_00112_46247_3853.N1	03JAN2011 15:48:21	03JAN2011 17:24:50	0	0	0	0	0
11	MIP_NL__0PNPDK20110103_172352_000058433098_00113_46248_3854.N1	03JAN2011 17:23:52	03JAN2011 19:01:15	0	0	0	0	0
12	MIP_NL__0PNPDE20110103_204158_000042623098_00115_46250_2643.N1	03JAN2011 20:41:58	03JAN2011 21:53:00	0	0	0	0	0
13	MIP_NL__0PNPDE20110103_215128_000023733098_00115_46250_2644.N1	03JAN2011 21:51:28	03JAN2011 22:31:01	0	0	0	0	0
14	MIP_NL__0PNPDE20110103_223101_000038693098_00116_46251_2645.N1	03JAN2011 22:31:01	03JAN2011 23:35:30	0	0	0	0	0

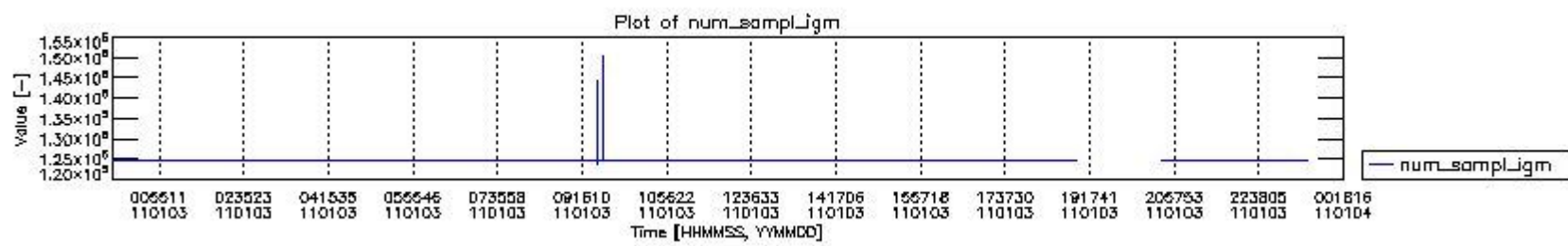
0.2 Instrument Operational Performance Parameters

The following plots give an overview of various instrument parameters for this day. The instrument parameters are part of the auxiliary data field within the source packets of the MIP_NL__0P product. The auxiliary data is normally included twice per interferogram. Note that only the first packet is currently included in monitoring.

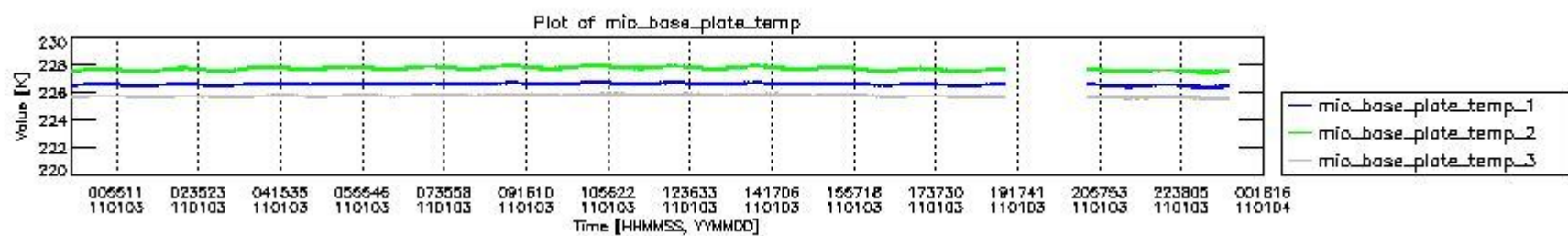
The following table shows the counts of various interferogram number of samples

Number of igm samples	Count [#]	Count [%]
123962	1	0.0026332420
124800	35278	92.895513
124803	2692	7.0886876

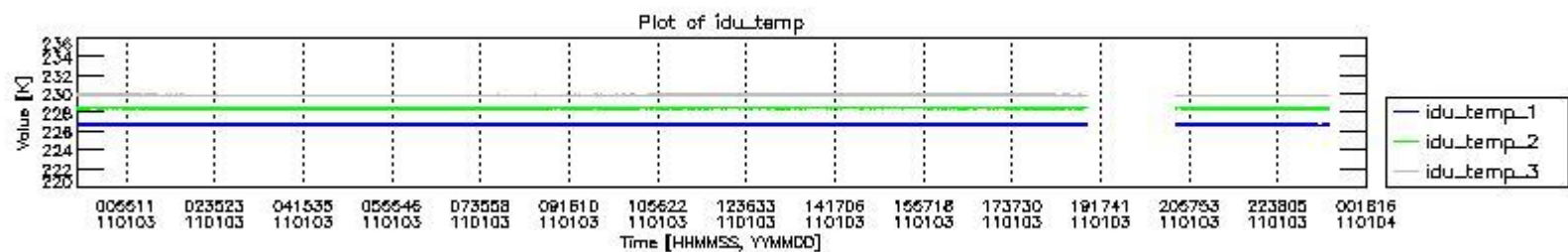
127531	1	0.0026332420
143256	1	0.0026332420
144094	1	0.0026332420
147663	1	0.0026332420
150394	1	0.0026332420



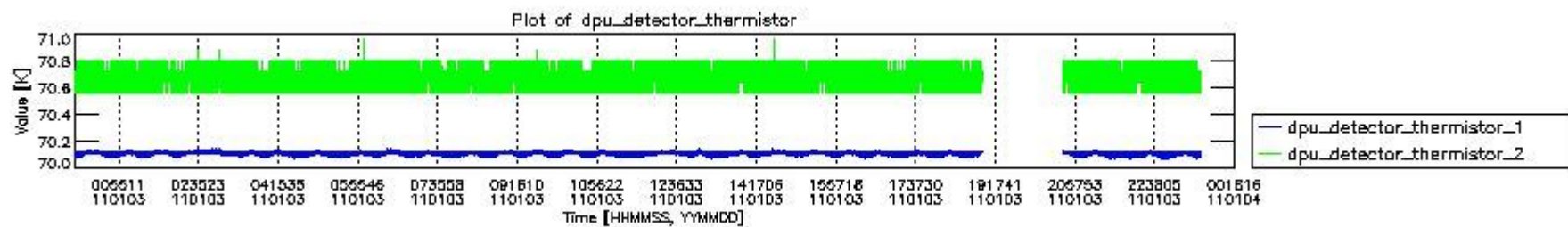
mipas_daily_report_level0_KSPT_L0_4504_N_20110103_0.PNG



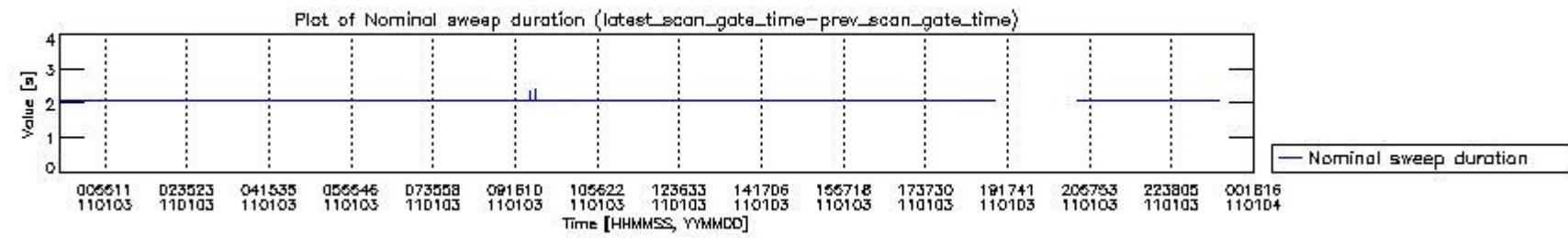
mipas_daily_report_level0_KSPT_L0_4504_N_20110103_1.PNG



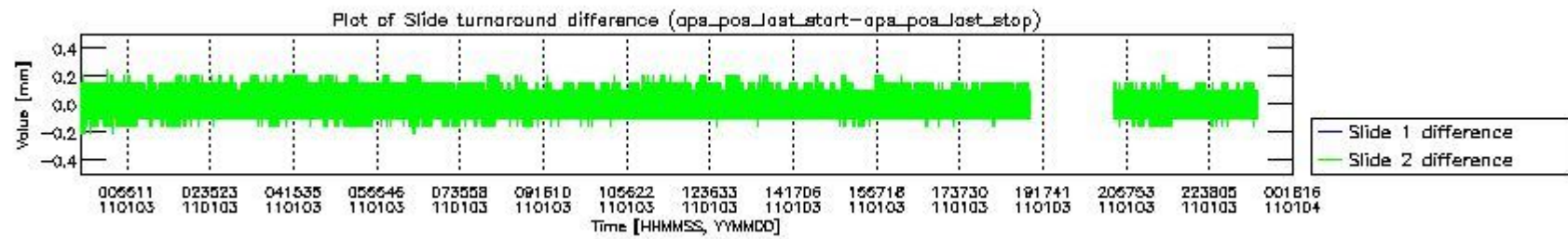
mipas_daily_report_level0_KSPT_L0_4504_N_20110103_2.PNG



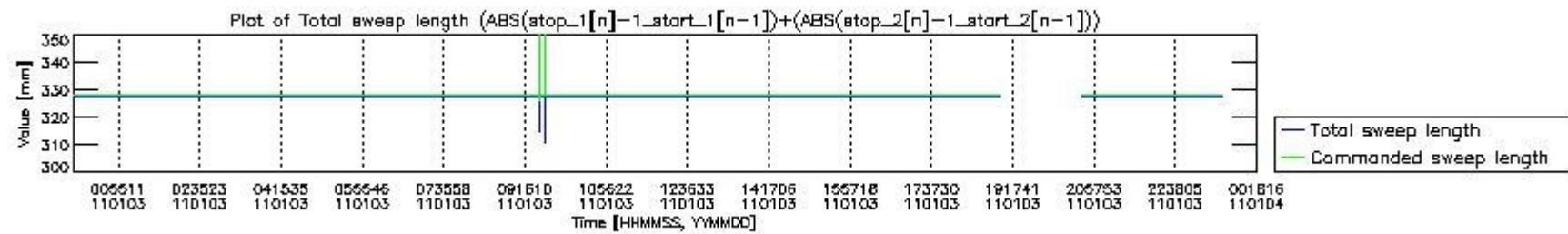
mipas_daily_report_level0_KSPT_L0_4504_N_20110103_3.PNG



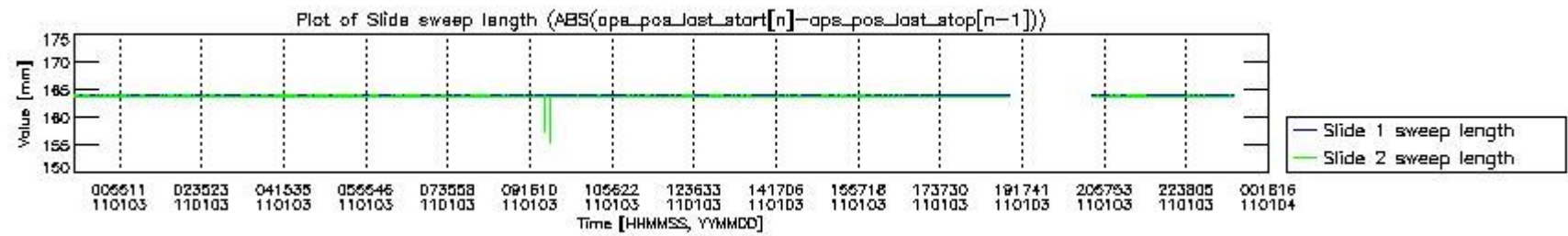
mipas_daily_report_level0_KSPT_L0_4504_N_20110103_4.PNG



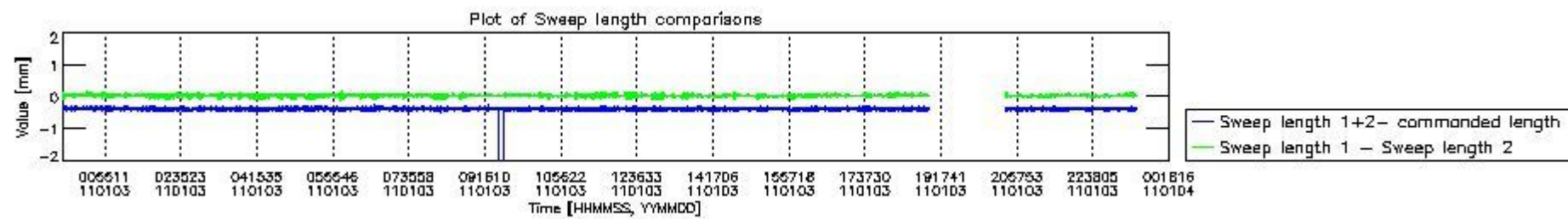
mipas_daily_report_level0_KSPT_L0_4504_N_20110103_5.PNG



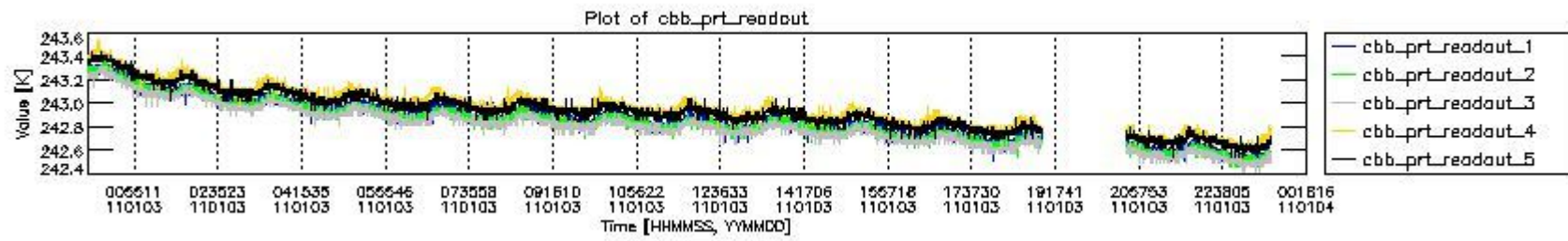
mipas_daily_report_level0_KSPT_L0_4504_N_20110103_6.PNG



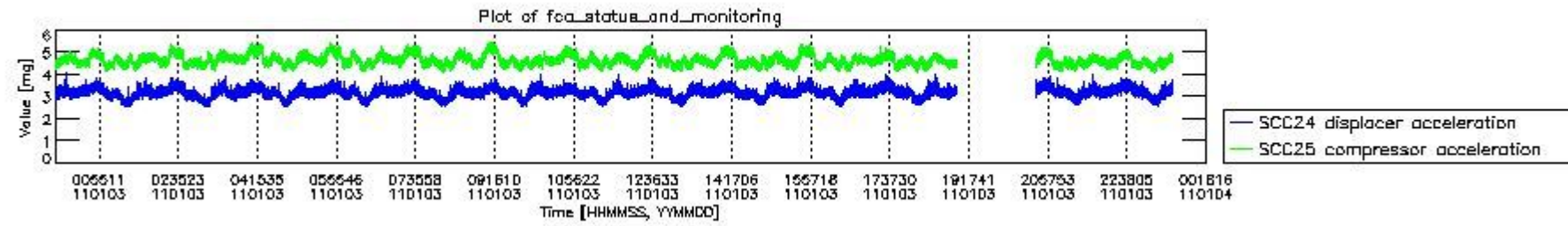
mipas_daily_report_level0_KSPT_L0_4504_N_20110103_7.PNG



mipas_daily_report_level0_KSPT_L0_4504_N_20110103_8.PNG



mipas_daily_report_level0_KSPT_L0_4504_N_20110103_9.PNG

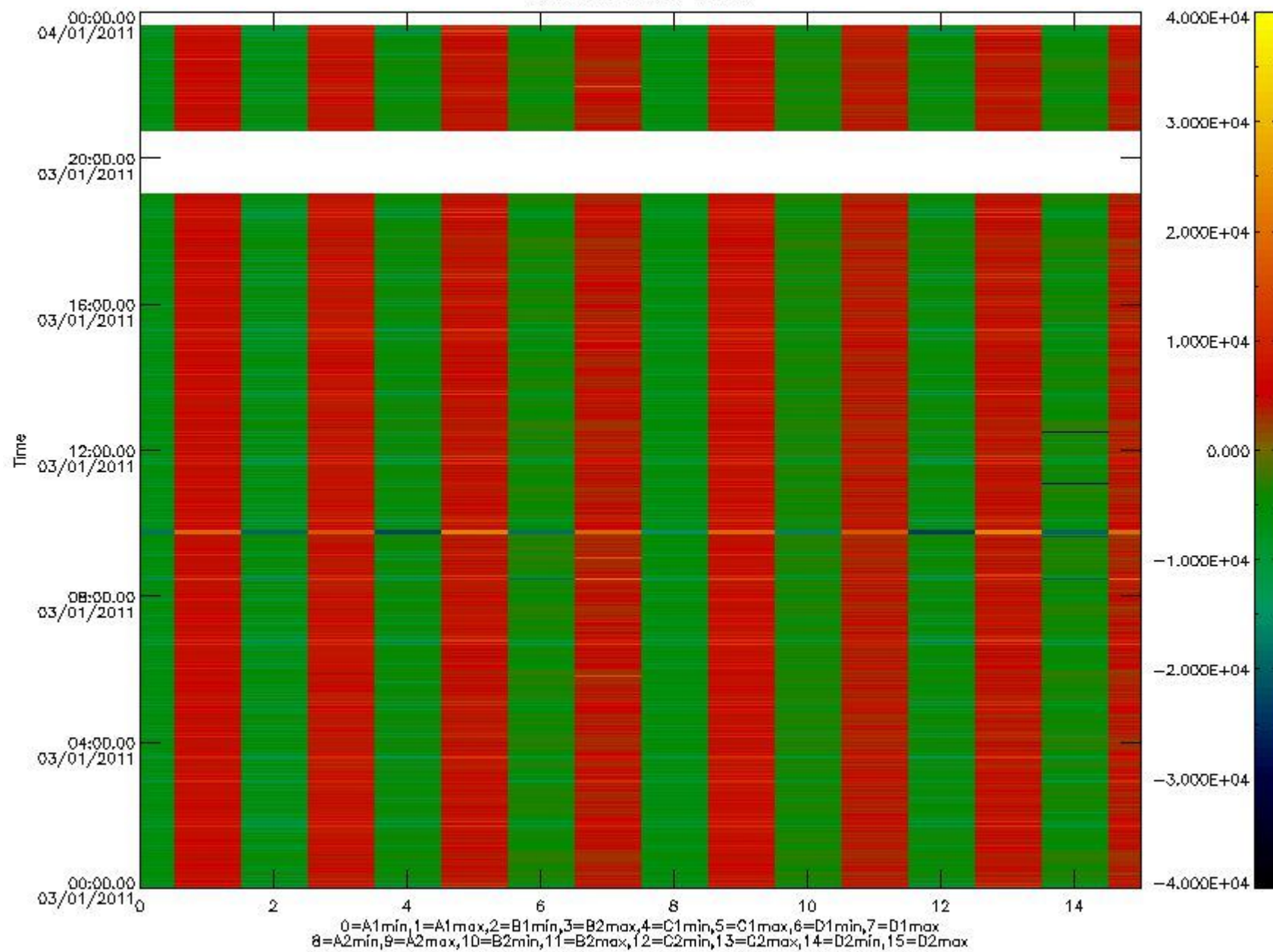


mipas_daily_report_level0_KSPT_L0_4504_N_20110103_10.PNG

The following table shows channel statistics for all channels for this day.

Channel	Min	Max	ADC
A1	-17937	19005	16bit
B1	-19494	16883	16bit
C1	-24290	23059	16bit
D1	-28943	32767	16bit
A2	-15515	19114	16bit
B2	-17573	17266	16bit
C2	-24083	24269	16bit
D2	-32768	32362	16bit

MIPNLOP_MIPSOUPAC_aux_fields_igm_cal, channel statistics plot
Colour indicates value.



mipas_daily_report_level0_KSPT_L0_4504_N_20110103_11.PNG

0.3 ADF monitoring

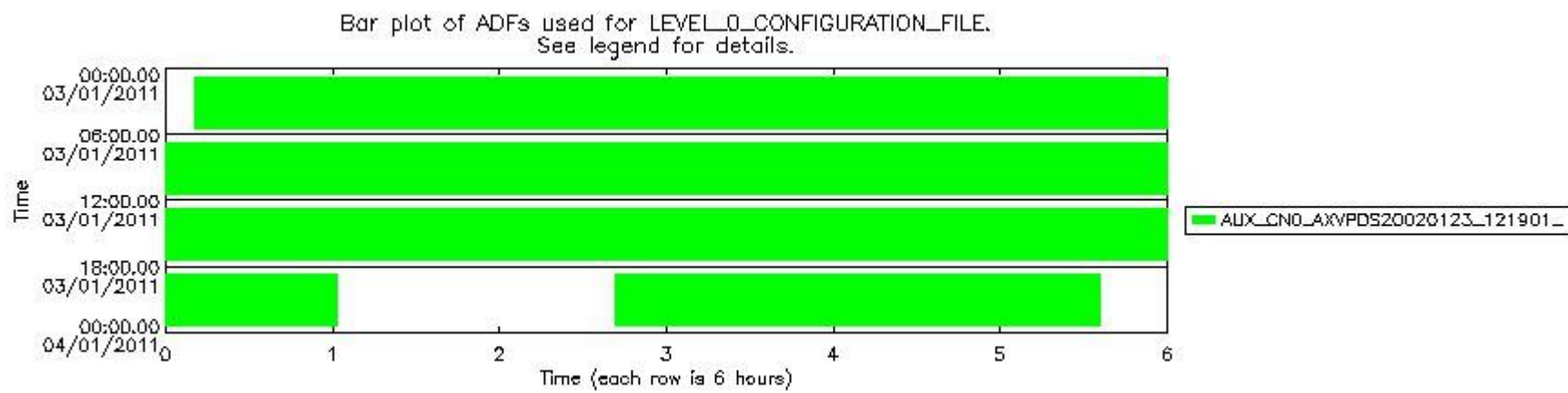
The use of ADFs is shown in two ways:

1. By means of two tables that can be used to find the ADF used for a specific product.
2. By means of plots that show changes in ADF using colours.

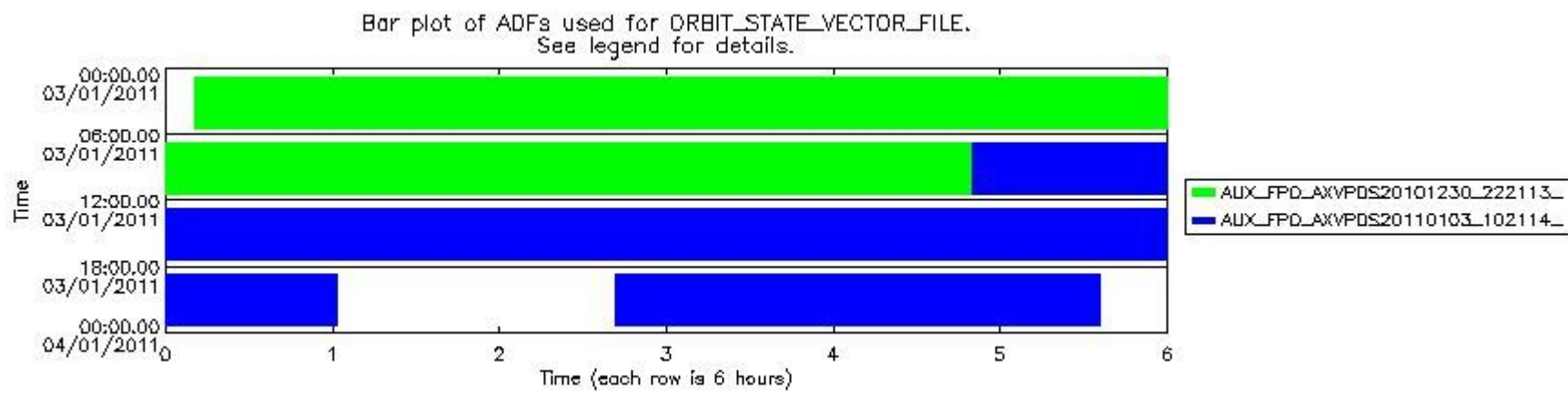
Number	ADF
0	AUX_CN0_AXVPDS20020123_121901_20020101_000000_20200101_000000
1	AUX_FPO_AXVPDS20101230_222113_20101230_193220_20110109_200559
2	AUX_FPO_AXVPDS20110103_102114_20110102_192223_20110112_213615

Number	Product name	#CN0	#FPO
--------	--------------	------	------

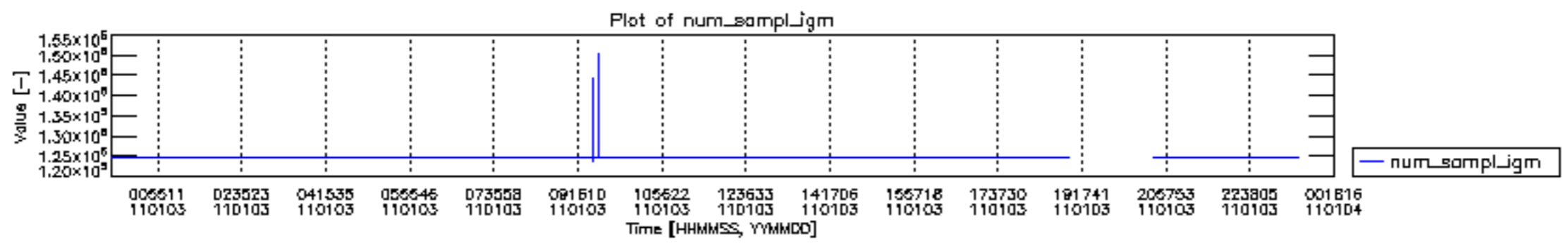
0	MIP_NL__0PNPDE20110103_001026_000059773098_00102_46237_2639.N1	0	1
1	MIP_NL__0PNPDE20110103_014908_000044043098_00103_46238_2640.N1	0	1
2	MIP_NL__0PNPDE20110103_030158_000062113098_00104_46239_2641.N1	0	1
3	MIP_NL__0PNPDE20110103_044456_000060443098_00105_46240_2642.N1	0	1
4	MIP_NL__0PNPDK20110103_062508_000040303098_00106_46241_3846.N1	0	1
5	MIP_NL__0PNPDK20110103_073117_000061403098_00107_46242_3847.N1	0	1
6	MIP_NL__0PNPDK20110103_091157_000059593098_00108_46243_3848.N1	0	1
7	MIP_NL__0PNPDK20110103_105007_000061383098_00109_46244_3849.N1	0	2
8	MIP_NL__0PNPDK20110103_123052_000059813098_00110_46245_3850.N1	0	2
9	MIP_NL__0PNPDK20110103_140935_000059603098_00111_46246_3852.N1	0	2
10	MIP_NL__0PNPDK20110103_154821_000057893098_00112_46247_3853.N1	0	2
11	MIP_NL__0PNPDK20110103_172352_000058433098_00113_46248_3854.N1	0	2
12	MIP_NL__0PNPDE20110103_204158_000042623098_00115_46250_2643.N1	0	2
13	MIP_NL__0PNPDE20110103_215128_000023733098_00115_46250_2644.N1	0	2
14	MIP_NL__0PNPDE20110103_223101_000038693098_00116_46251_2645.N1	0	2

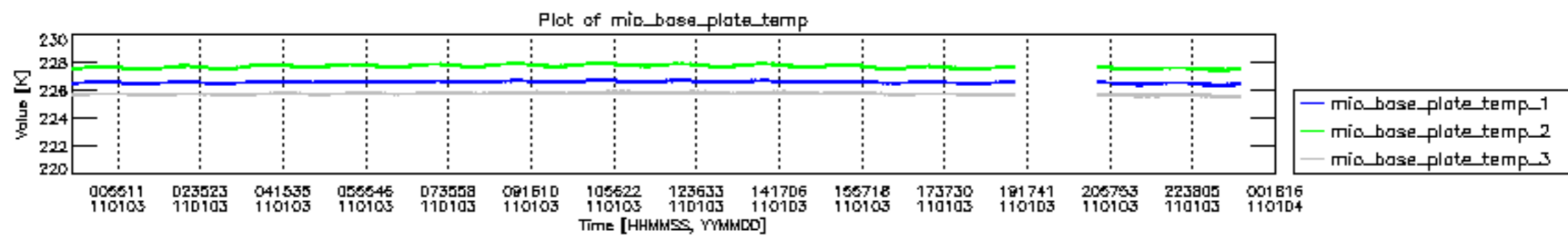


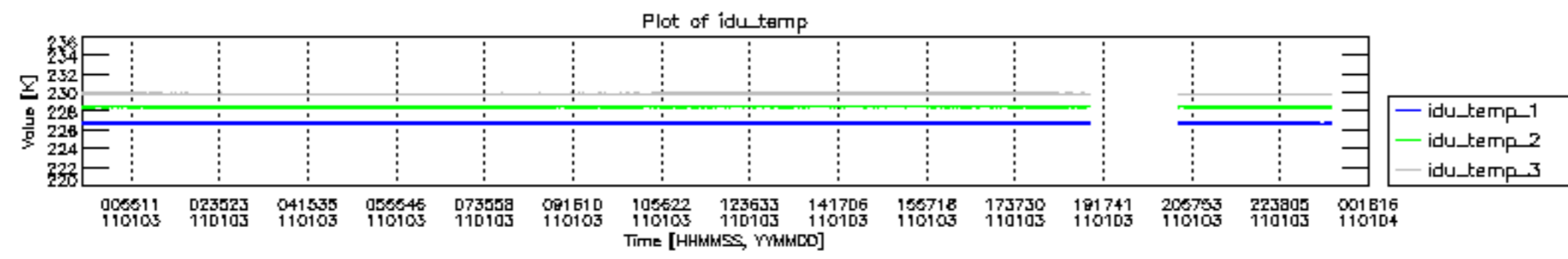
mipas_daily_report_level0_KSPT_L0_4504_N_20110103_12.PNG

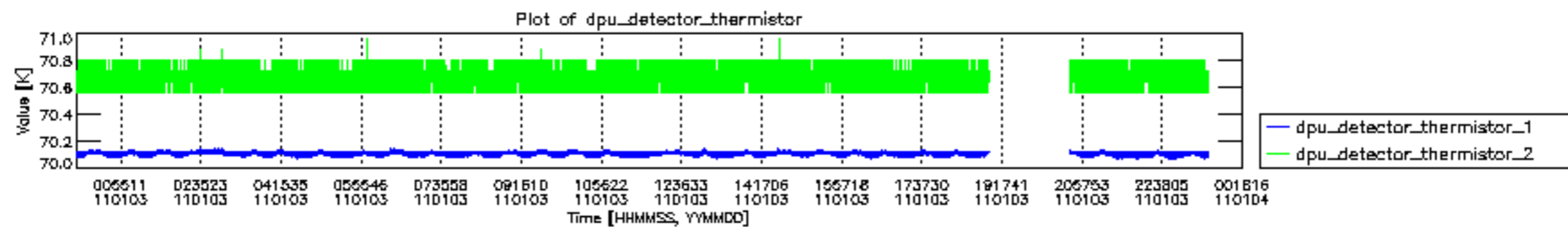


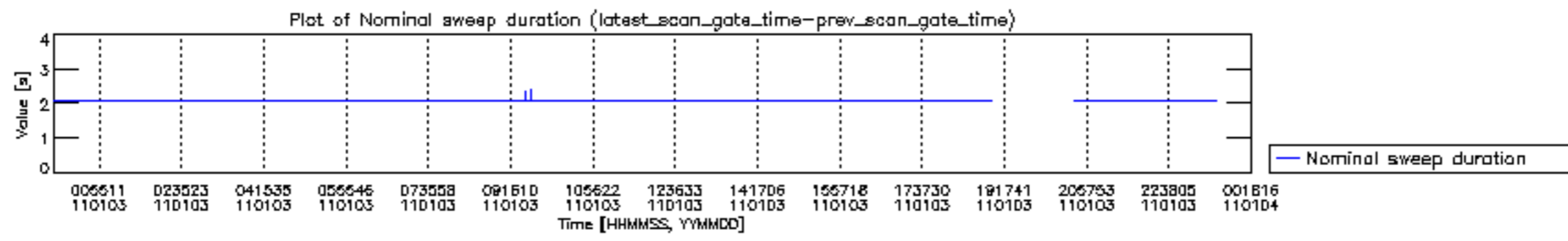
mipas_daily_report_level0_KSPT_L0_4504_N_20110103_13.PNG

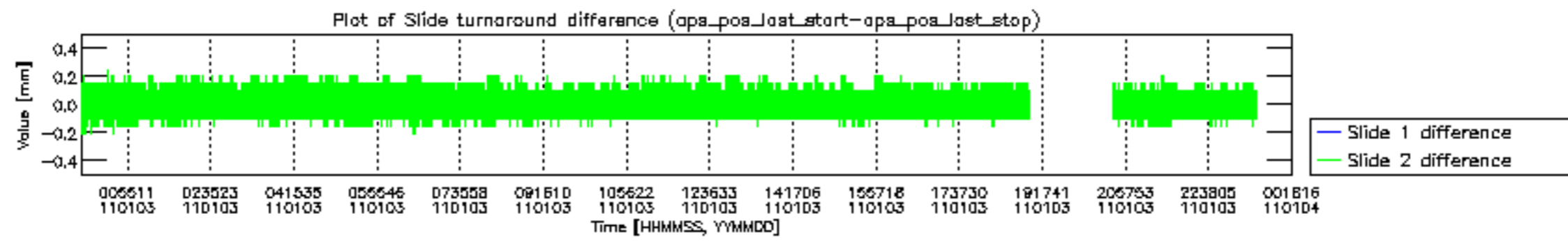


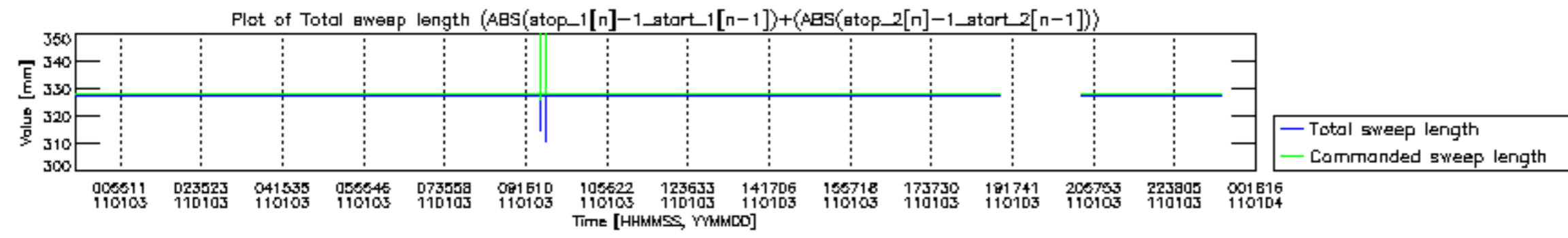


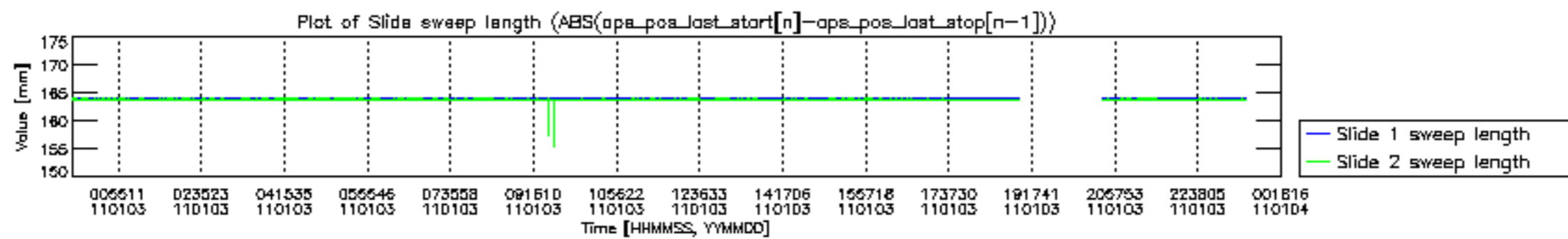


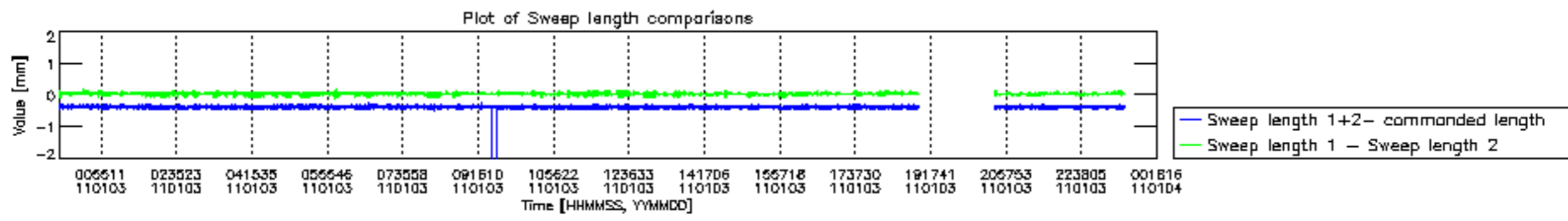


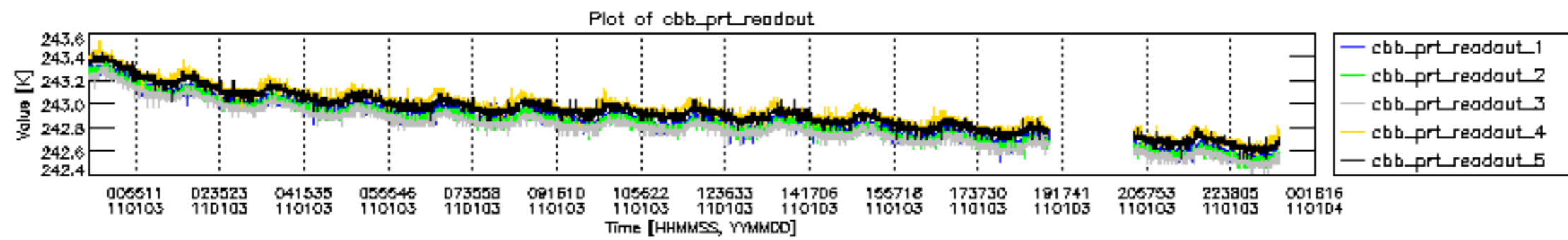


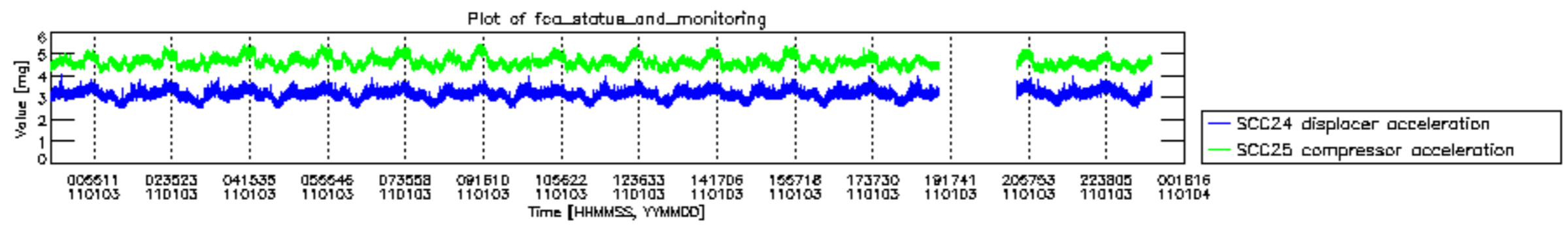




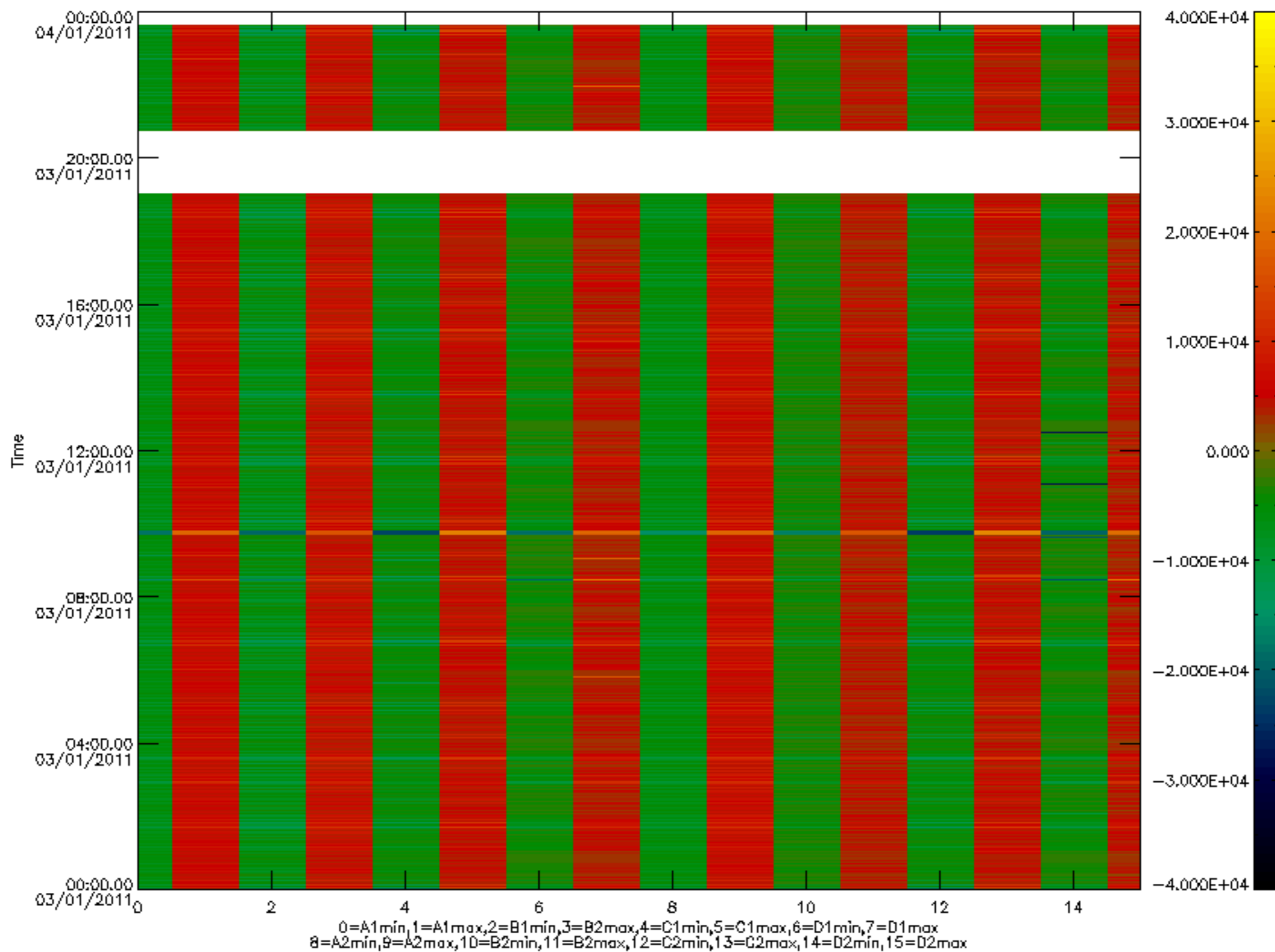


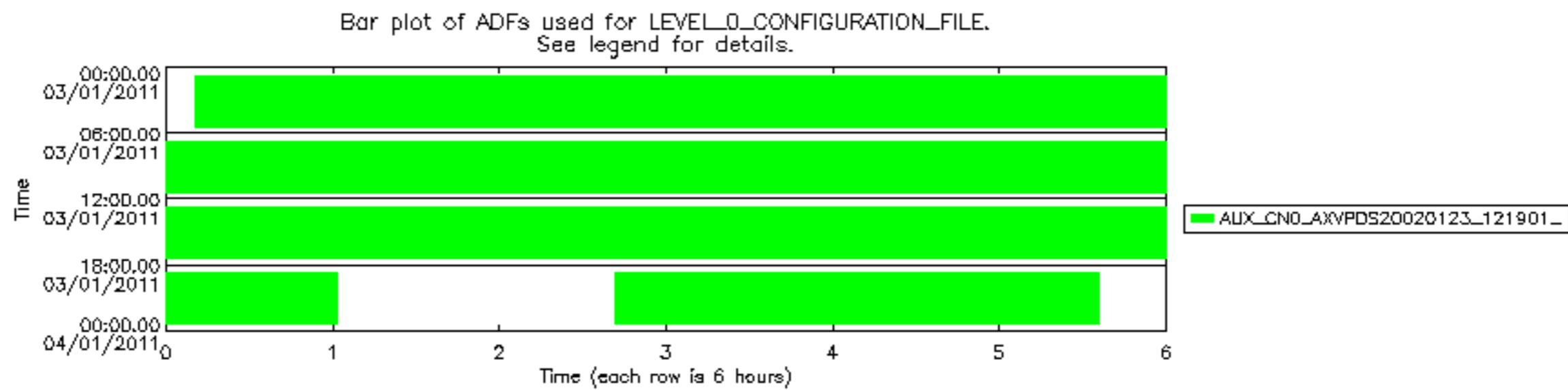






MIPNLOP_MIPSOUPAC_aux_fields_igm_cal, channel statistics plot
 Colour indicates value.





Bar plot of ADFs used for ORBIT_STATE_VECTOR_FILE.
See legend for details.

