

0. MIPAS Daily Report for level 0 products

[0.1 General Info](#)

[0.2 Instrument Operational Performance Parameters](#)

[0.3 ADF monitoring](#)

0.1 General Info

This report contains a daily analysis on parameters extracted from MIPAS level 0 data (The MIP_NL__0P product).

0.1.1 Report summary

The table below shows general characteristics of the data that are included into this report.

Item	Value
Report version	v1.6 08-11-2010
Time of report generation	05JAN2011 05:23:22
Data source version	KSPT_L0/4504-N
Processing scope for products	31DEC2010 00:00:00 to 01JAN2011 00:00:00
Start time of first product within scope	31DEC2010 00:22:07
Stop time of last product within scope	01JAN2011 01:24:44
Total number of level 0 products	18
Number of level 0 products with errors	1

0.1.2 Product Quality Indicators per product

The following table shows a summary for each product used in this report.

#	Product name	Start time	Stop time	Prod err	ISP err sign	ISP miss sign	ISP disc sign	rs sign
0	MIP_NL__0PNPDE20101231_002207_000029393098_00059_46194_2626.N1	31DEC2010 00:22:07	31DEC2010 01:11:06	0	0	0	0	0
1	MIP_NL__0PNPDE20101231_011106_000029003098_00060_46195_2627.N1	31DEC2010 01:11:06	31DEC2010 01:59:26	0	0	0	0	0
2	MIP_NL__0PNPDE20101231_015830_000045043098_00060_46195_2628.N1	31DEC2010 01:58:30	31DEC2010 03:13:34	0	0	0	0	0
3	MIP_NL__0PNPDE20101231_031300_000061253098_00061_46196_2629.N1	31DEC2010 03:13:00	31DEC2010 04:55:05	0	0	0	0	0
4	MIP_NL__0PNPDE20101231_045434_000060373098_00062_46197_2630.N1	31DEC2010 04:54:34	31DEC2010 06:35:11	0	0	0	0	0
5	MIP_NL__0PNPDK20101231_063438_000040383098_00063_46198_3824.N1	31DEC2010 06:34:38	31DEC2010 07:41:56	0	0	0	0	0
6	MIP_NL__0PNPDK20101231_074100_000061523098_00064_46199_3825.N1	31DEC2010 07:41:00	31DEC2010 09:23:32	0	0	0	0	0
7	MIP_NL__0PNPDK20101231_092217_000060913098_00065_46200_3826.N1	31DEC2010 09:22:17	31DEC2010 11:03:47	0	0	0	0	0
8	MIP_NL__0PNPDK20101231_110253_000060043098_00066_46201_3827.N1	31DEC2010 11:02:53	31DEC2010 12:42:57	0	0	0	0	0
9	MIP_NL__0PNPDK20101231_124121_000059233098_00067_46202_3828.N1	31DEC2010 12:41:21	31DEC2010 14:20:04	0	0	0	0	0
10	MIP_NL__0PNPDK20101231_141907_000059543098_00068_46203_3829.N1	31DEC2010 14:19:07	31DEC2010 15:58:21	0	0	0	0	0
11	MIP_NL__0PNPDK20101231_155748_000058473098_00069_46204_3830.N1	31DEC2010 15:57:48	31DEC2010 17:35:15	0	0	0	0	0
12	MIP_NL__0PNPDK20101231_173417_000058453098_00070_46205_3831.N1	31DEC2010 17:34:17	31DEC2010 19:11:42	0	0	0	0	0
13	MIP_NL__0PNPDK20101231_191142_000000943098_00071_46206_3833.N1	31DEC2010 19:11:42	31DEC2010 19:13:16	1	1	0	0	0
14	MIP_NL__0PNPDK20101231_191211_000060813098_00071_46206_3834.N1	31DEC2010 19:12:11	31DEC2010 20:53:33	0	0	0	0	0
15	MIP_NL__0PNPDE20101231_205207_000043563098_00072_46207_2631.N1	31DEC2010 20:52:07	31DEC2010 22:04:43	0	0	0	0	0
16	MIP_NL__0PNPDE20101231_220344_000060943098_00072_46207_2632.N1	31DEC2010 22:03:44	31DEC2010 23:45:18	0	0	0	0	0
17	MIP_NL__0PNPDE20101231_234417_000060273098_00073_46208_2633.N1	31DEC2010 23:44:17	01JAN2011 01:24:44	0	0	0	0	0

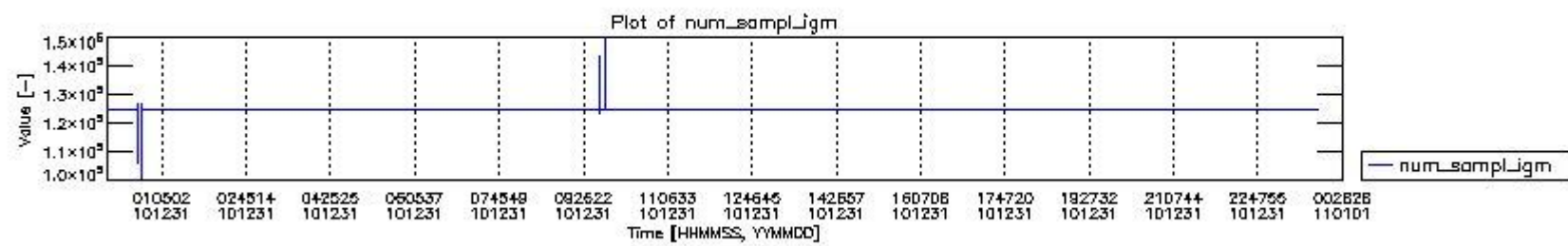
0.2 Instrument Operational Performance Parameters

The following plots give an overview of various instrument parameters for this day. The instrument parameters are part of the auxiliary data field within the source packets of the MIP_NL__0P product. The auxiliary data is normally included twice per interferogram. Note that only the first packet is currently included in monitoring.

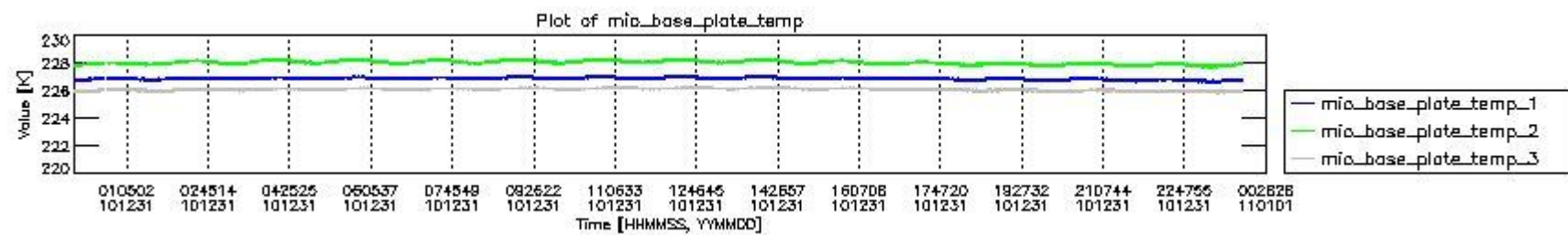
The following table shows the counts of various interferogram number of samples

Number of igm samples	Count [#]	Count [%]
-----------------------	-----------	-----------

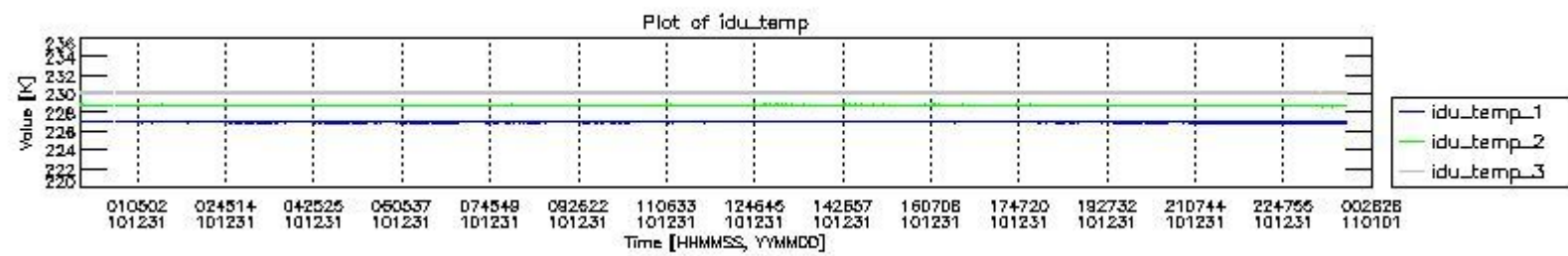
100632	1	0.0024181458
106269	1	0.0024181458
107870	1	0.0024181458
123070	1	0.0024181458
124800	38410	92.880979
124803	2932	7.0900034
125884	1	0.0024181458
126401	1	0.0024181458
126968	1	0.0024181458
127308	1	0.0024181458
141472	1	0.0024181458
143202	1	0.0024181458
147440	1	0.0024181458
149948	1	0.0024181458



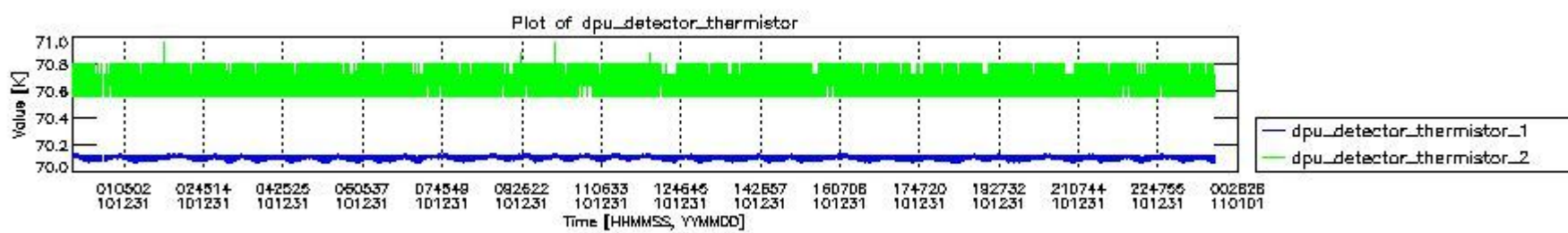
mipas_daily_report_level0_KSPT_L0_4504_N_20101231_0.PNG



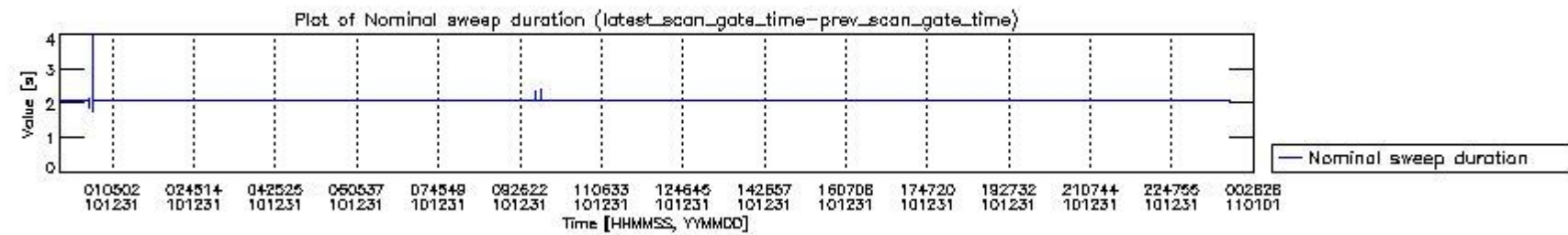
mipas_daily_report_level0_KSPT_L0_4504_N_20101231_1.PNG



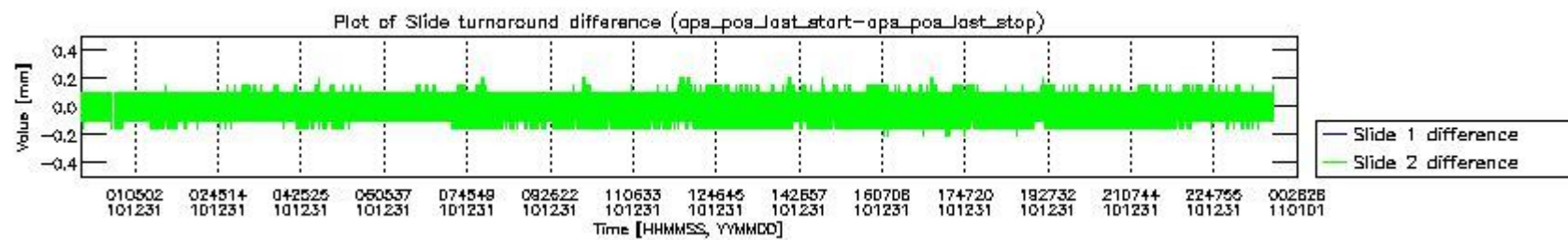
mipas_daily_report_level0_KSPT_L0_4504_N_20101231_2.PNG



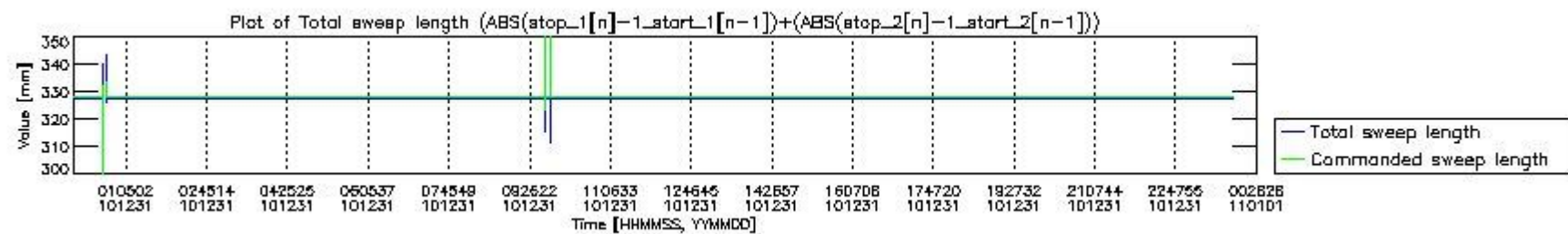
mipas_daily_report_level0_KSPT_L0_4504_N_20101231_3.PNG



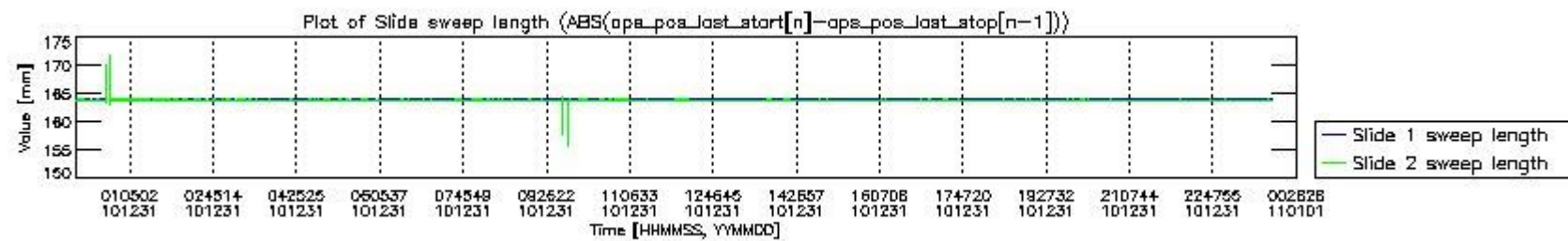
mipas_daily_report_level0_KSPT_L0_4504_N_20101231_4.PNG



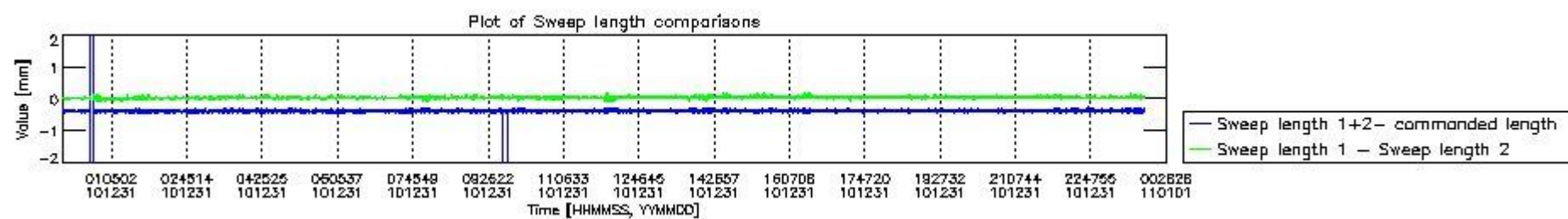
mipas_daily_report_level0_KSPT_L0_4504_N_20101231_5.PNG



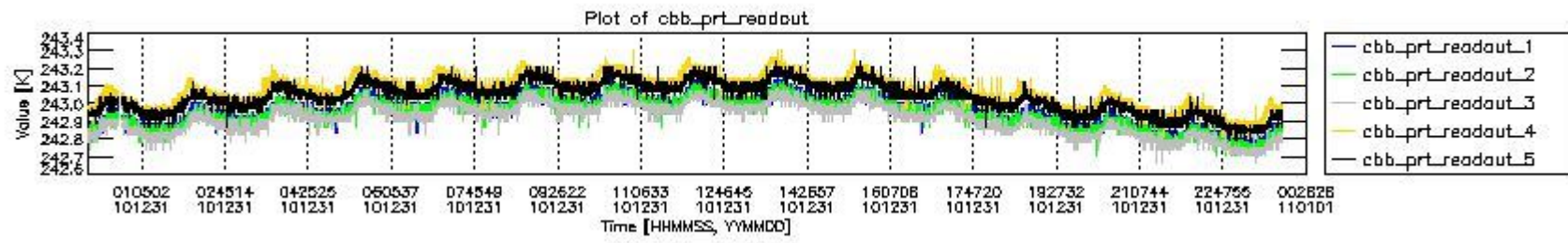
mipas_daily_report_level0_KSPT_L0_4504_N_20101231_6.PNG



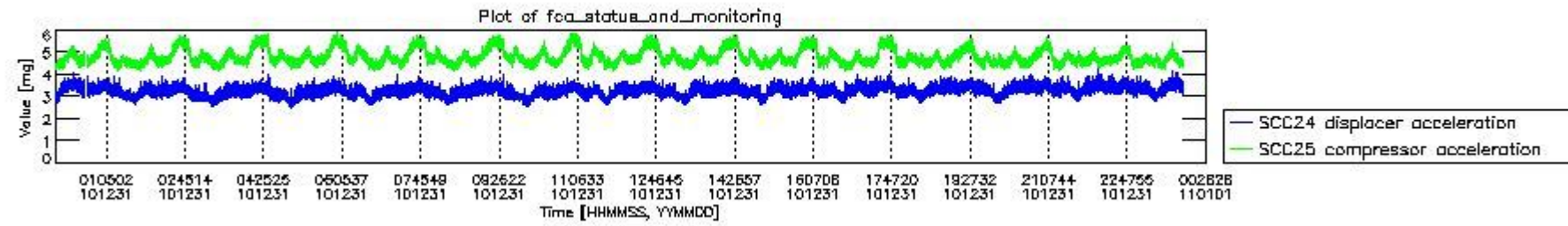
mipas_daily_report_level0_KSPT_L0_4504_N_20101231_7.PNG



mipas_daily_report_level0_KSPT_L0_4504_N_20101231_8.PNG



mipas_daily_report_level0_KSPT_L0_4504_N_20101231_9.PNG

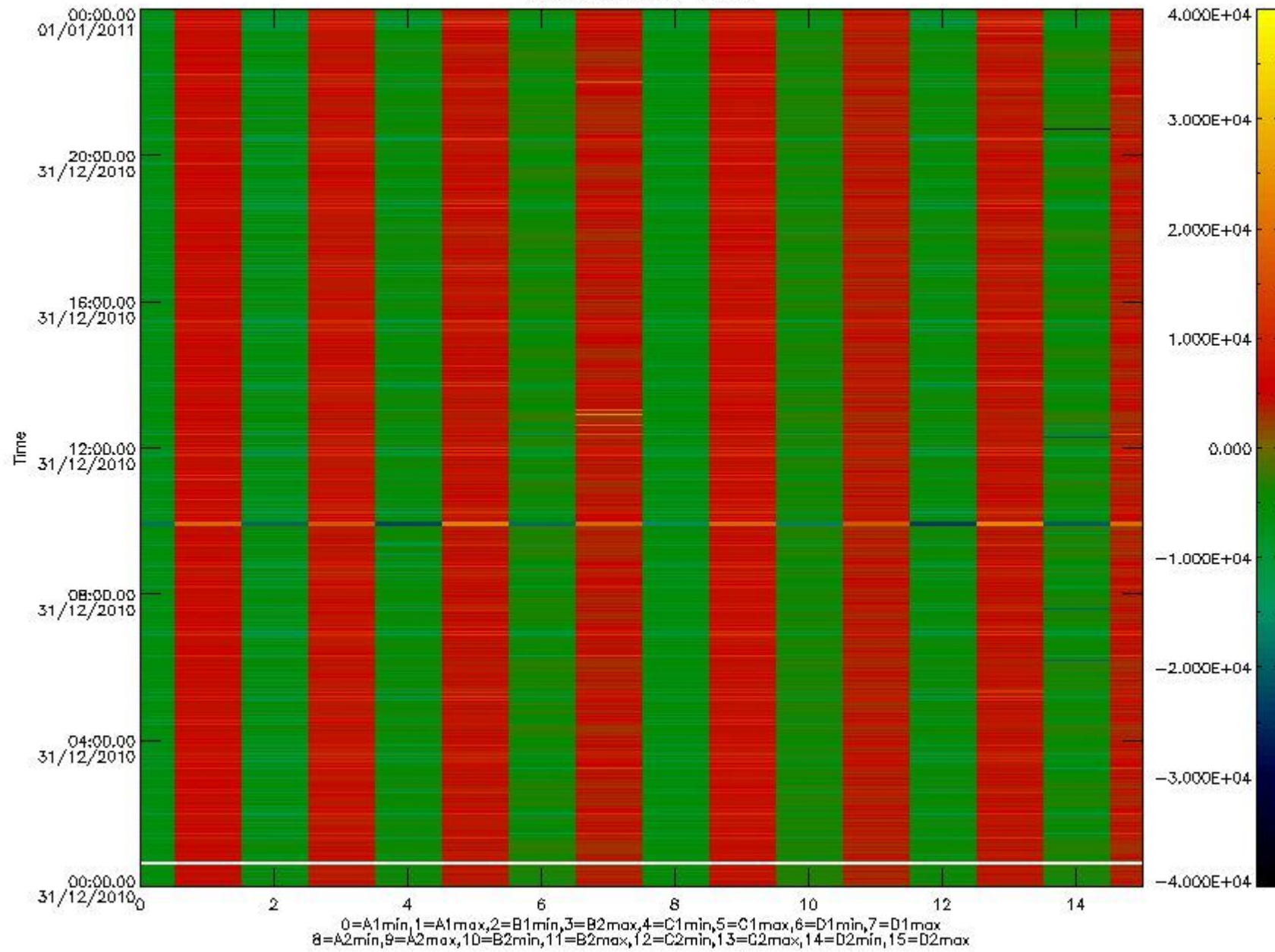


mipas_daily_report_level0_KSPT_L0_4504_N_20101231_10.PNG

The following table shows channel statistics for all channels for this day.

Channel	Min	Max	ADC
A1	-17994	19084	16bit
B1	-19651	17002	16bit
C1	-23359	23198	16bit
D1	-28741	32767	16bit
A2	-15589	19227	16bit
B2	-17731	17395	16bit
C2	-24289	23946	16bit
D2	-32768	32767	16bit

MIPNLOP_MIPSOUPAC_aux_fields_igm_cal, channel statistics plot
Colour indicates value.



mipas_daily_report_level0_KSPT_L0_4504_N_20101231_11.PNG

0.3 ADF monitoring

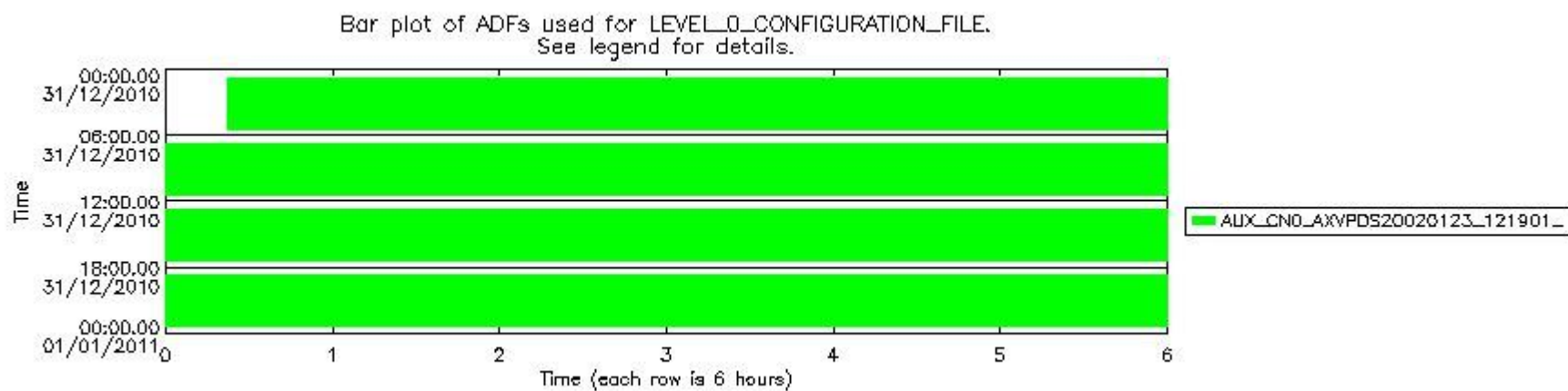
The use of ADFs is shown in two ways:

1. By means of two tables that can be used to find the ADF used for a specific product.
2. By means of plots that show changes in ADF using colours.

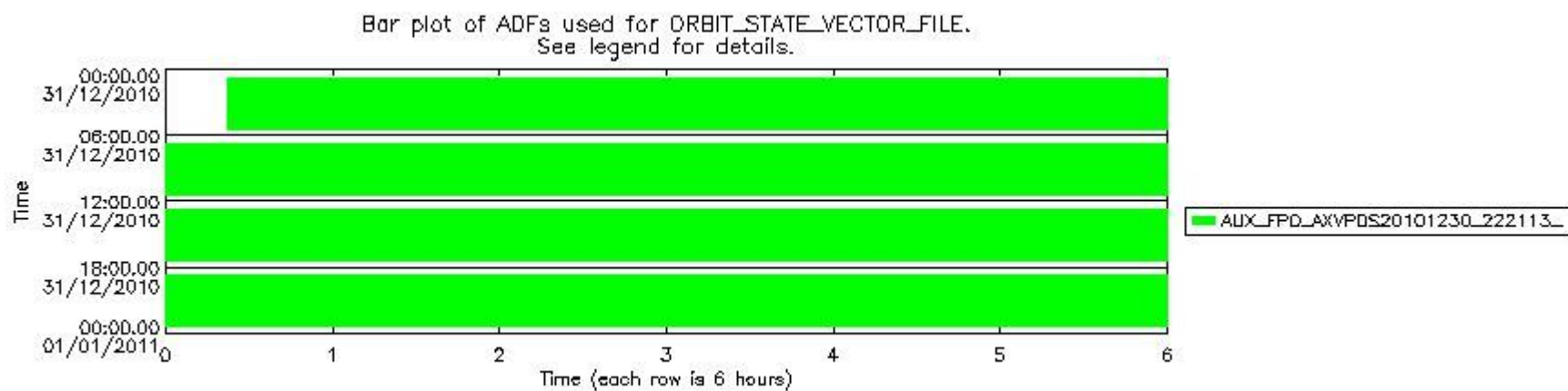
Number	ADF
0	AUX_CN0_AXVPDS20020123_121901_20020101_000000_20200101_000000
1	AUX_FPO_AXVPDS20101230_222113_20101230_193220_20110109_200559

Number	Product name	#CN0	#FPO
0	MIP_NL_0PNPDE20101231_002207_000029393098_00059_46194_2626.N1	0	1

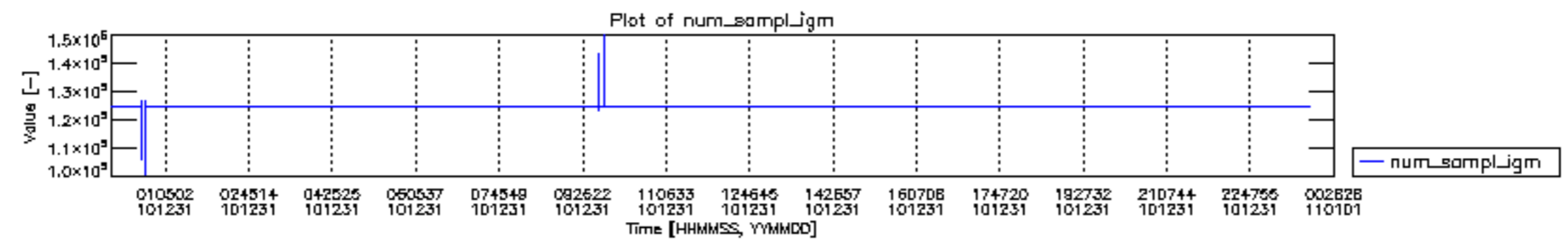
1	MIP_NL__0PNPDE20101231_011106_000029003098_00060_46195_2627.N1	0	1
2	MIP_NL__0PNPDE20101231_015830_000045043098_00060_46195_2628.N1	0	1
3	MIP_NL__0PNPDE20101231_031300_000061253098_00061_46196_2629.N1	0	1
4	MIP_NL__0PNPDE20101231_045434_000060373098_00062_46197_2630.N1	0	1
5	MIP_NL__0PNPDK20101231_063438_000040383098_00063_46198_3824.N1	0	1
6	MIP_NL__0PNPDK20101231_074100_000061523098_00064_46199_3825.N1	0	1
7	MIP_NL__0PNPDK20101231_092217_000060913098_00065_46200_3826.N1	0	1
8	MIP_NL__0PNPDK20101231_110253_000060043098_00066_46201_3827.N1	0	1
9	MIP_NL__0PNPDK20101231_124121_000059233098_00067_46202_3828.N1	0	1
10	MIP_NL__0PNPDK20101231_141907_000059543098_00068_46203_3829.N1	0	1
11	MIP_NL__0PNPDK20101231_155748_000058473098_00069_46204_3830.N1	0	1
12	MIP_NL__0PNPDK20101231_173417_000058453098_00070_46205_3831.N1	0	1
13	MIP_NL__0PNPDK20101231_191142_000000943098_00071_46206_3833.N1	0	1
14	MIP_NL__0PNPDK20101231_191211_000060813098_00071_46206_3834.N1	0	1
15	MIP_NL__0PNPDE20101231_205207_000043563098_00072_46207_2631.N1	0	1
16	MIP_NL__0PNPDE20101231_220344_000060943098_00072_46207_2632.N1	0	1
17	MIP_NL__0PNPDE20101231_234417_000060273098_00073_46208_2633.N1	0	1

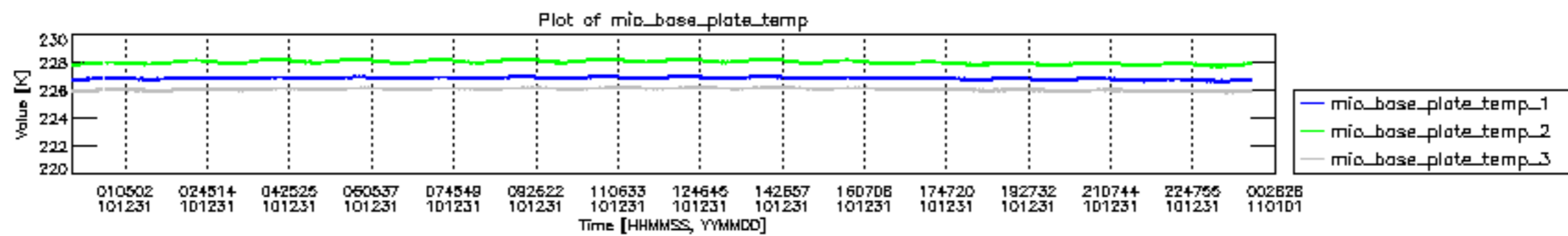


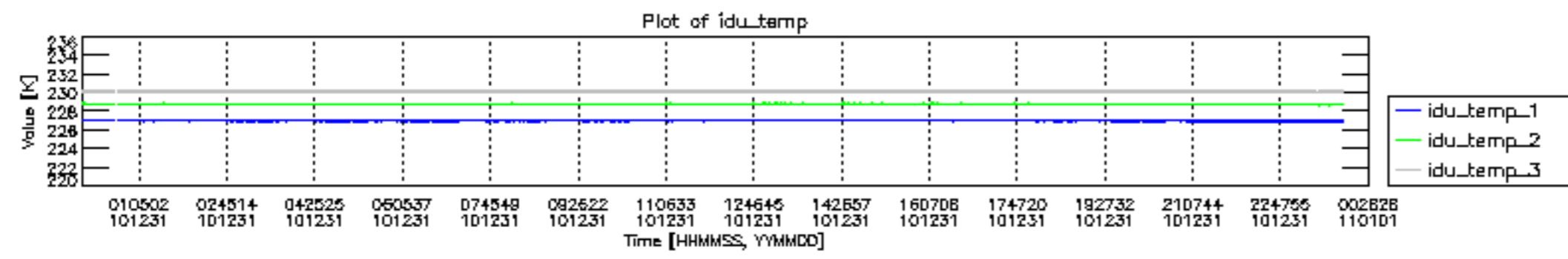
mipas_daily_report_level0_KSPT_L0_4504_N_20101231_12.PNG

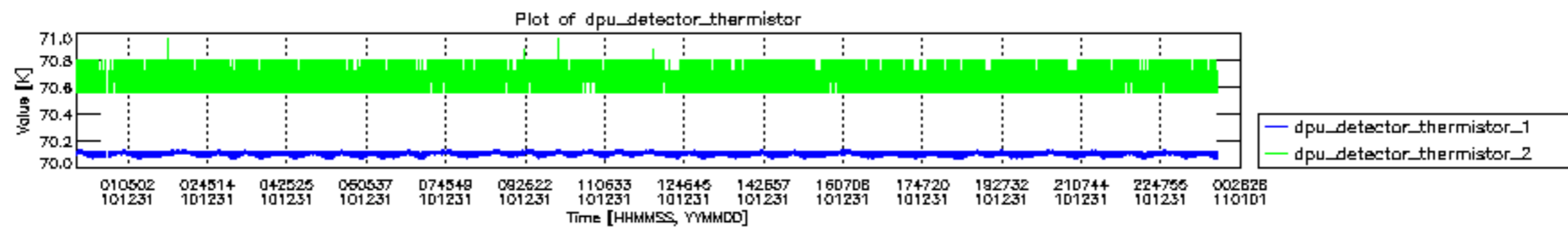


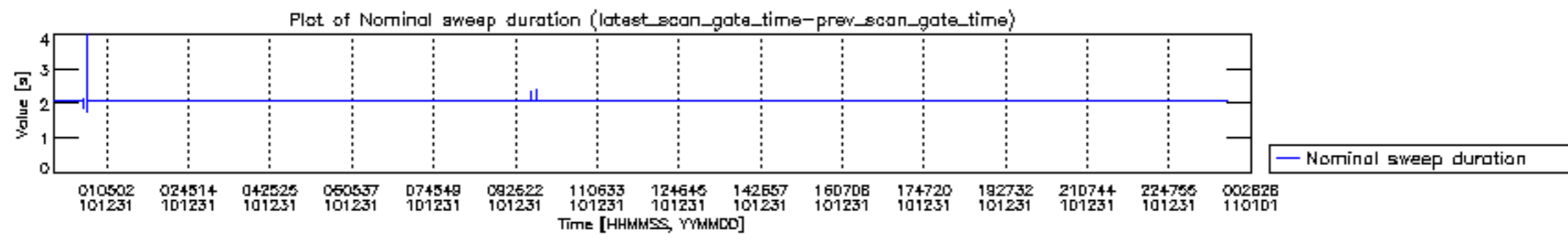
mipas_daily_report_level0_KSPT_L0_4504_N_20101231_13.PNG

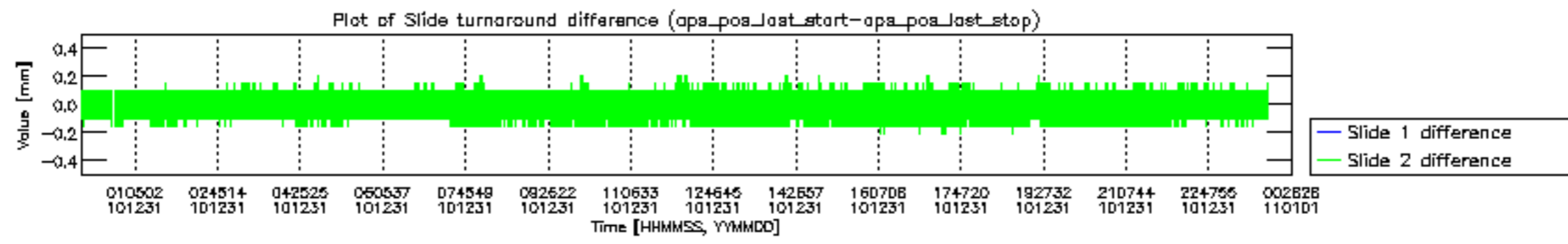


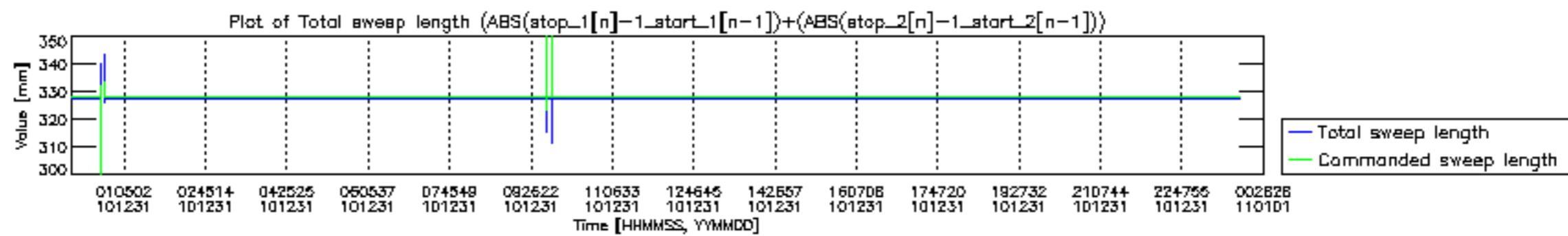


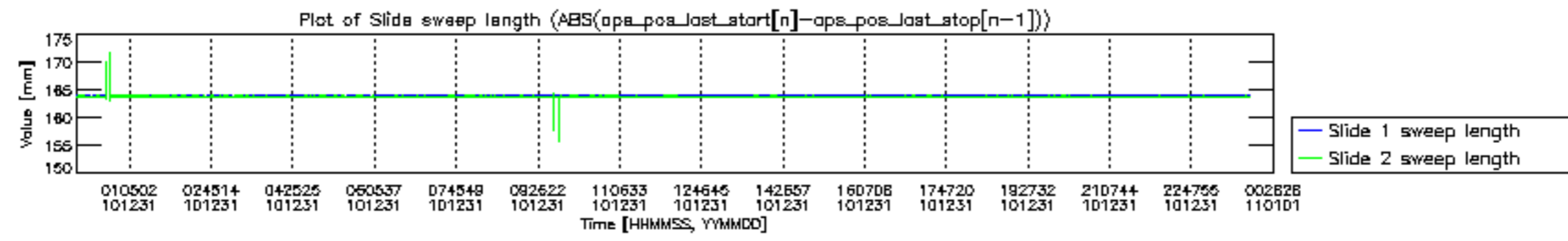


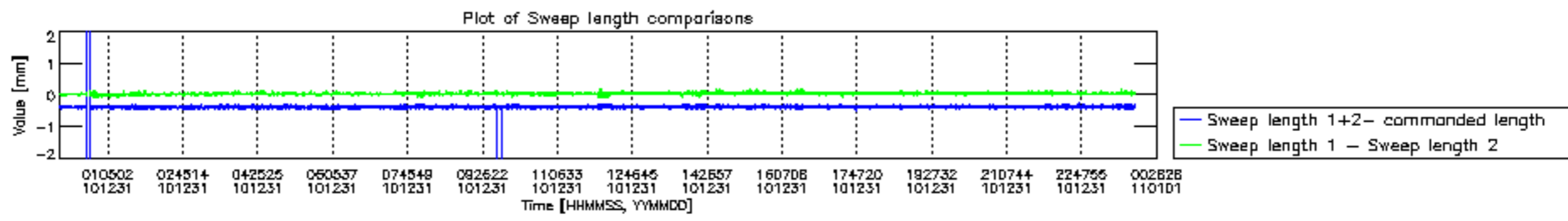


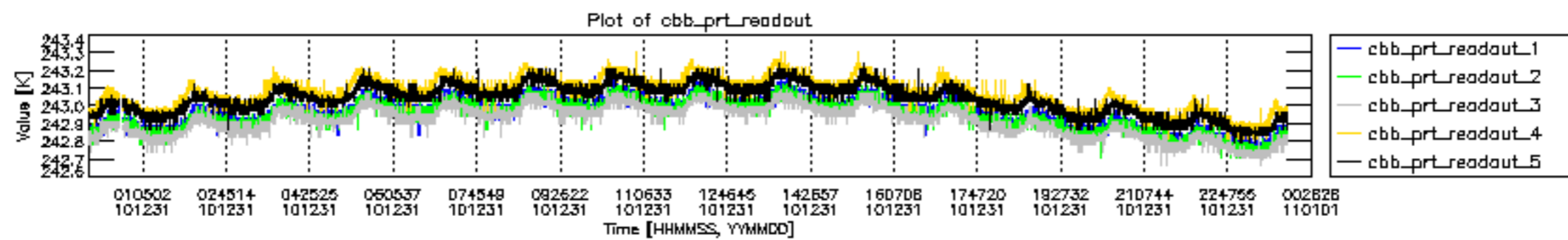


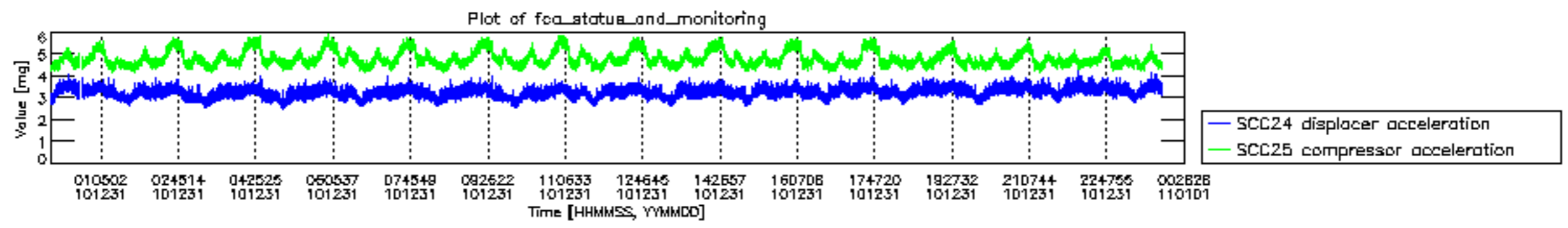












MIPNLOP_MIPSOUPAC_aux_fields_igm_cal, channel statistics plot
 Colour indicates value.

