

## 0. MIPAS Daily Report for level 0 products

### [0.1 General Info](#)

### [0.2 Instrument Operational Performance Parameters](#)

### [0.3 ADF monitoring](#)

## 0.1 General Info

This report contains a daily analysis on parameters extracted from MIPAS level 0 data (The MIP\_NL\_\_0P product).

### 0.1.1 Report summary

The table below shows general characteristics of the data that are included into this report.

Item	Value
Report version	v1.6 08-11-2010
Time of report generation	31DEC2010 05:23:54
Data source version	KSPT_L0/4504-N
Processing scope for products	26DEC2010 00:00:00 to 27DEC2010 00:00:00
Start time of first product within scope	26DEC2010 00:04:01
Stop time of last product within scope	26DEC2010 23:28:25
Total number of level 0 products	15
Number of level 0 products with errors	0

### 0.1.2 Product Quality Indicators per product

The following table shows a summary for each product used in this report.

#	Product name	Start time	Stop time	Prod err	ISP err sign	ISP miss sign	ISP disc sign	rs sign
0	MIP_NL__0PNPDE20101226_000401_000059423097_00418_46122_2574.N1	26DEC2010 00:04:01	26DEC2010 01:43:03	0	0	0	0	0
1	MIP_NL__0PNPDE20101226_014205_000044413097_00419_46123_2575.N1	26DEC2010 01:42:05	26DEC2010 02:56:06	0	0	0	0	0
2	MIP_NL__0PNPDE20101226_025533_000061563097_00420_46124_2576.N1	26DEC2010 02:55:33	26DEC2010 04:38:09	0	0	0	0	0
3	MIP_NL__0PNPDE20101226_043738_000060483097_00421_46125_2577.N1	26DEC2010 04:37:38	26DEC2010 06:18:25	0	0	0	0	0
4	MIP_NL__0PNPDK20101226_061754_000041093097_00422_46126_3781.N1	26DEC2010 06:17:54	26DEC2010 07:26:23	0	0	0	0	0
5	MIP_NL__0PNPDK20101226_072529_000061673097_00423_46127_3782.N1	26DEC2010 07:25:29	26DEC2010 09:08:16	0	0	0	0	0
6	MIP_NL__0PNPDK20101226_090709_000059493097_00424_46128_3783.N1	26DEC2010 09:07:09	26DEC2010 10:46:18	0	0	0	0	0
7	MIP_NL__0PNPDK20101226_104442_000060353097_00425_46129_3784.N1	26DEC2010 10:44:42	26DEC2010 12:25:17	0	0	0	0	0
8	MIP_NL__0PNPDK20101226_122421_000059853097_00426_46130_3785.N1	26DEC2010 12:24:21	26DEC2010 14:04:06	0	0	0	0	0
9	MIP_NL__0PNPDK20101226_140309_000059253097_00427_46131_3786.N1	26DEC2010 14:03:09	26DEC2010 15:41:54	0	0	0	0	0
10	MIP_NL__0PNPDK20101226_154116_000057473097_00428_46132_3787.N1	26DEC2010 15:41:16	26DEC2010 17:17:03	0	0	0	0	0
11	MIP_NL__0PNPDK20101226_171559_000060483097_00429_46133_3788.N1	26DEC2010 17:15:59	26DEC2010 18:56:46	0	0	0	0	0
12	MIP_NL__0PNPDK20101226_185542_000059713097_00430_46134_3789.N1	26DEC2010 18:55:42	26DEC2010 20:35:12	0	0	0	0	0
13	MIP_NL__0PNPDE20101226_203323_000045003097_00431_46135_2578.N1	26DEC2010 20:33:23	26DEC2010 21:48:23	0	0	0	0	0
14	MIP_NL__0PNPDE20101226_214721_000060653097_00431_46135_2579.N1	26DEC2010 21:47:21	26DEC2010 23:28:25	0	0	0	0	0

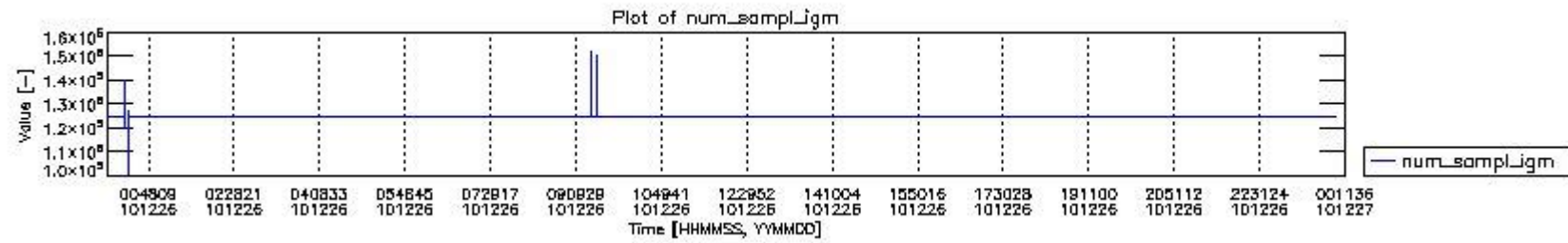
## 0.2 Instrument Operational Performance Parameters

The following plots give an overview of various instrument parameters for this day. The instrument parameters are part of the auxiliary data field within the source packets of the MIP\_NL\_\_0P product. The auxiliary data is normally included twice per interferogram. Note that only the first packet is currently included in monitoring.

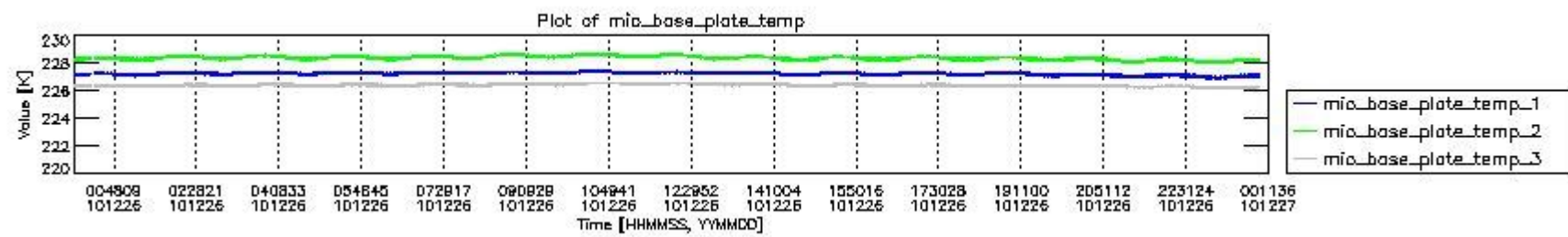
The following table shows the counts of various interferogram number of samples

Number of igm samples	Count [#]	Count [%]
100632	1	0.0024089420
120022	1	0.0024089420
124800	38563	92.896030

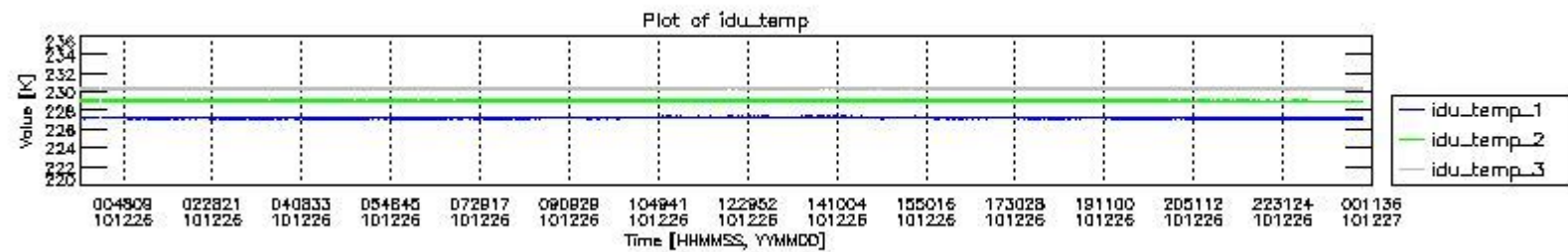
124803	2937	7.0750626
125884	1	0.0024089420
126968	1	0.0024089420
127531	1	0.0024089420
128423	1	0.0024089420
135376	1	0.0024089420
140154	1	0.0024089420
147663	1	0.0024089420
148555	1	0.0024089420
150394	1	0.0024089420
152178	1	0.0024089420



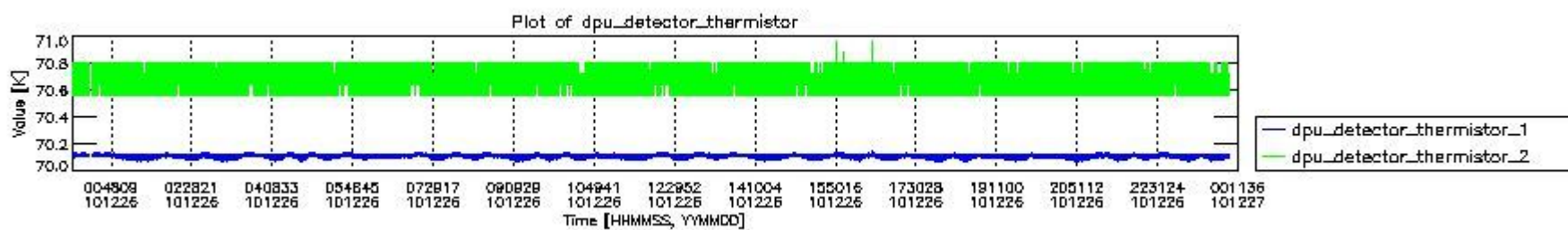
mipas\_daily\_report\_level0\_KSPT\_L0\_4504\_N\_20101226\_0.PNG



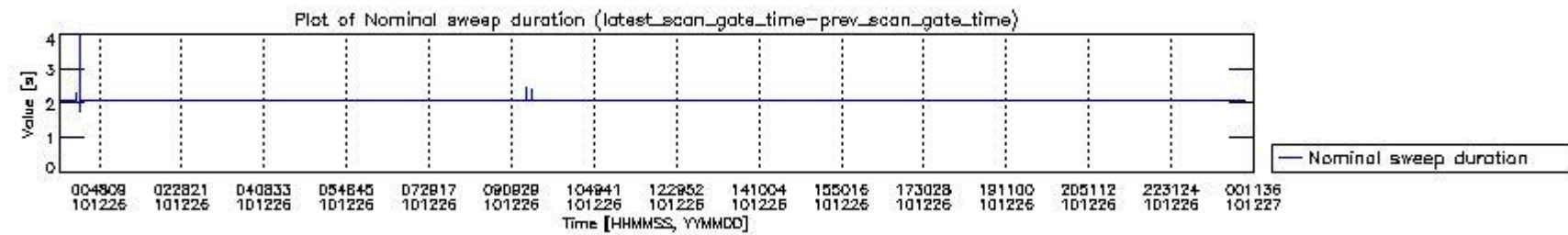
mipas\_daily\_report\_level0\_KSPT\_L0\_4504\_N\_20101226\_1.PNG



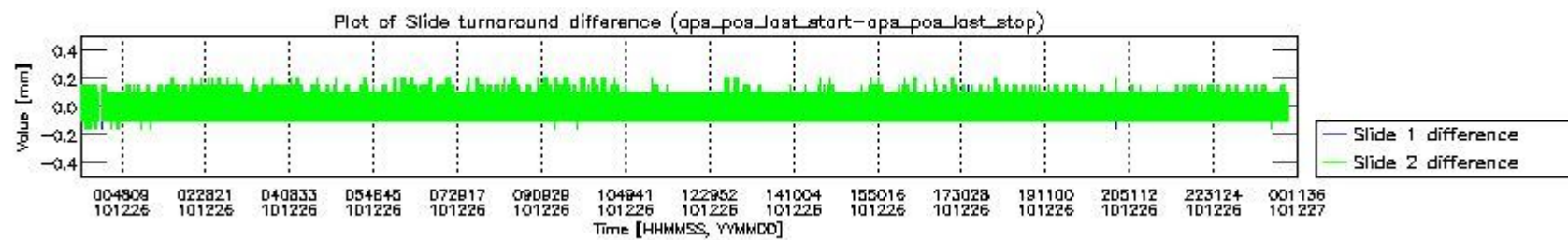
mipas\_daily\_report\_level0\_KSPT\_L0\_4504\_N\_20101226\_2.PNG



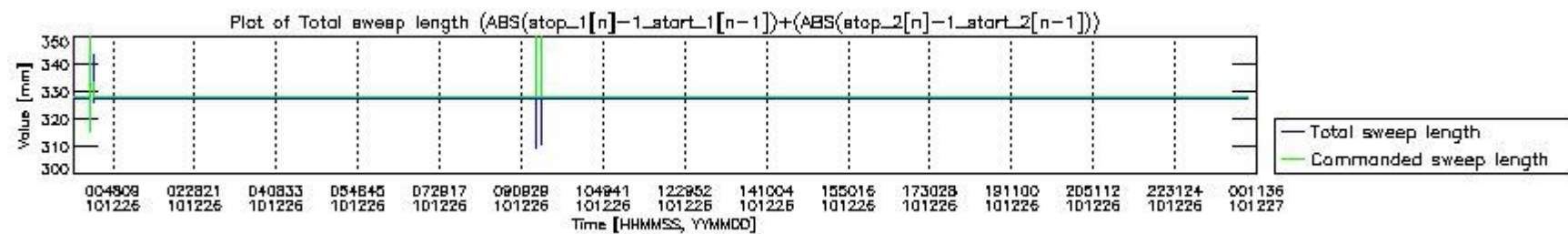
mipas\_daily\_report\_level0\_KSPT\_L0\_4504\_N\_20101226\_3.PNG



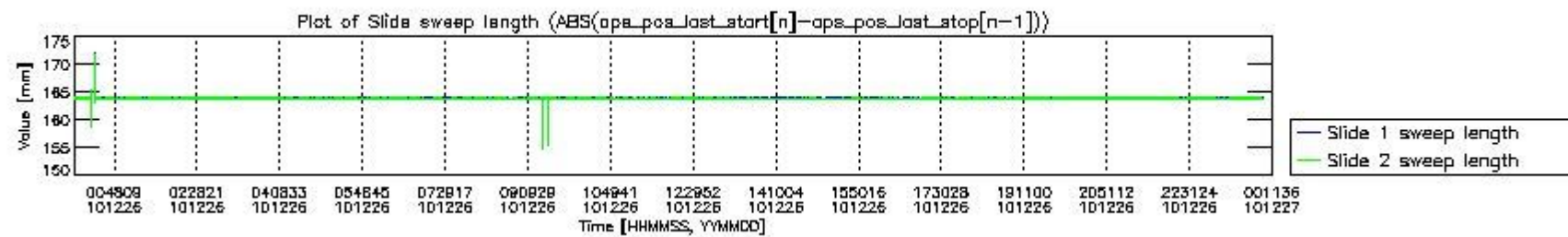
mipas\_daily\_report\_level0\_KSPT\_L0\_4504\_N\_20101226\_4.PNG



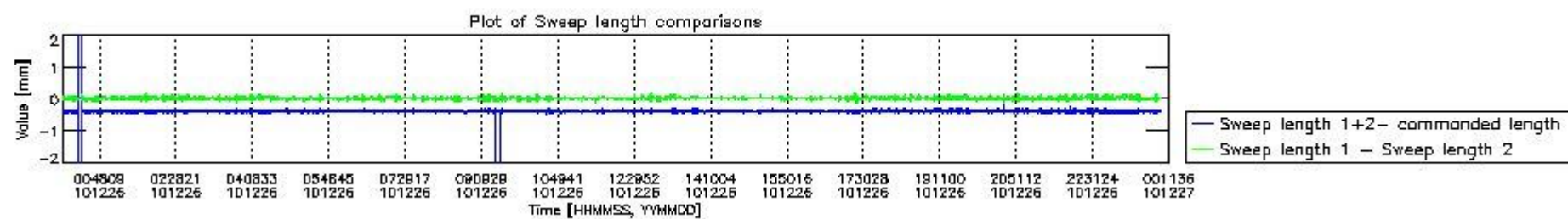
mipas\_daily\_report\_level0\_KSPT\_L0\_4504\_N\_20101226\_5.PNG



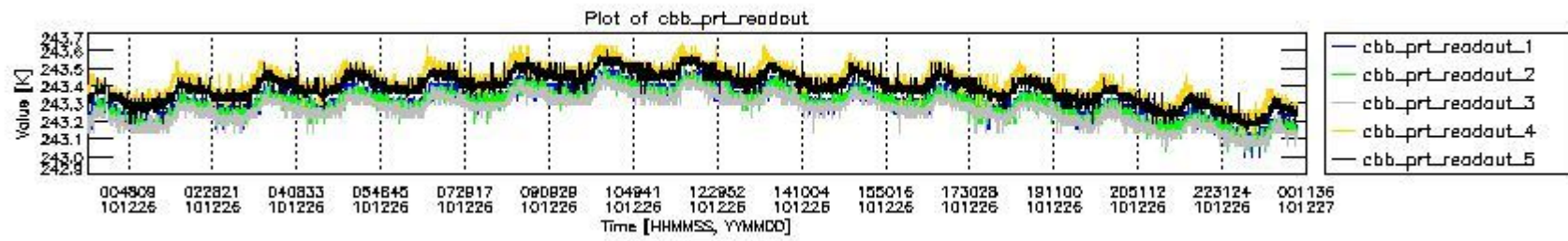
mipas\_daily\_report\_level0\_KSPT\_L0\_4504\_N\_20101226\_6.PNG



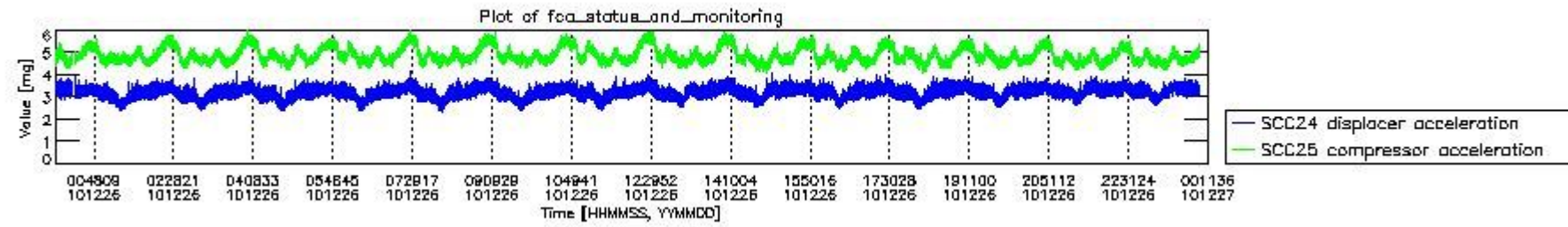
mipas\_daily\_report\_level0\_KSPT\_L0\_4504\_N\_20101226\_7.PNG



mipas\_daily\_report\_level0\_KSPT\_L0\_4504\_N\_20101226\_8.PNG



mipas\_daily\_report\_level0\_KSPT\_L0\_4504\_N\_20101226\_9.PNG

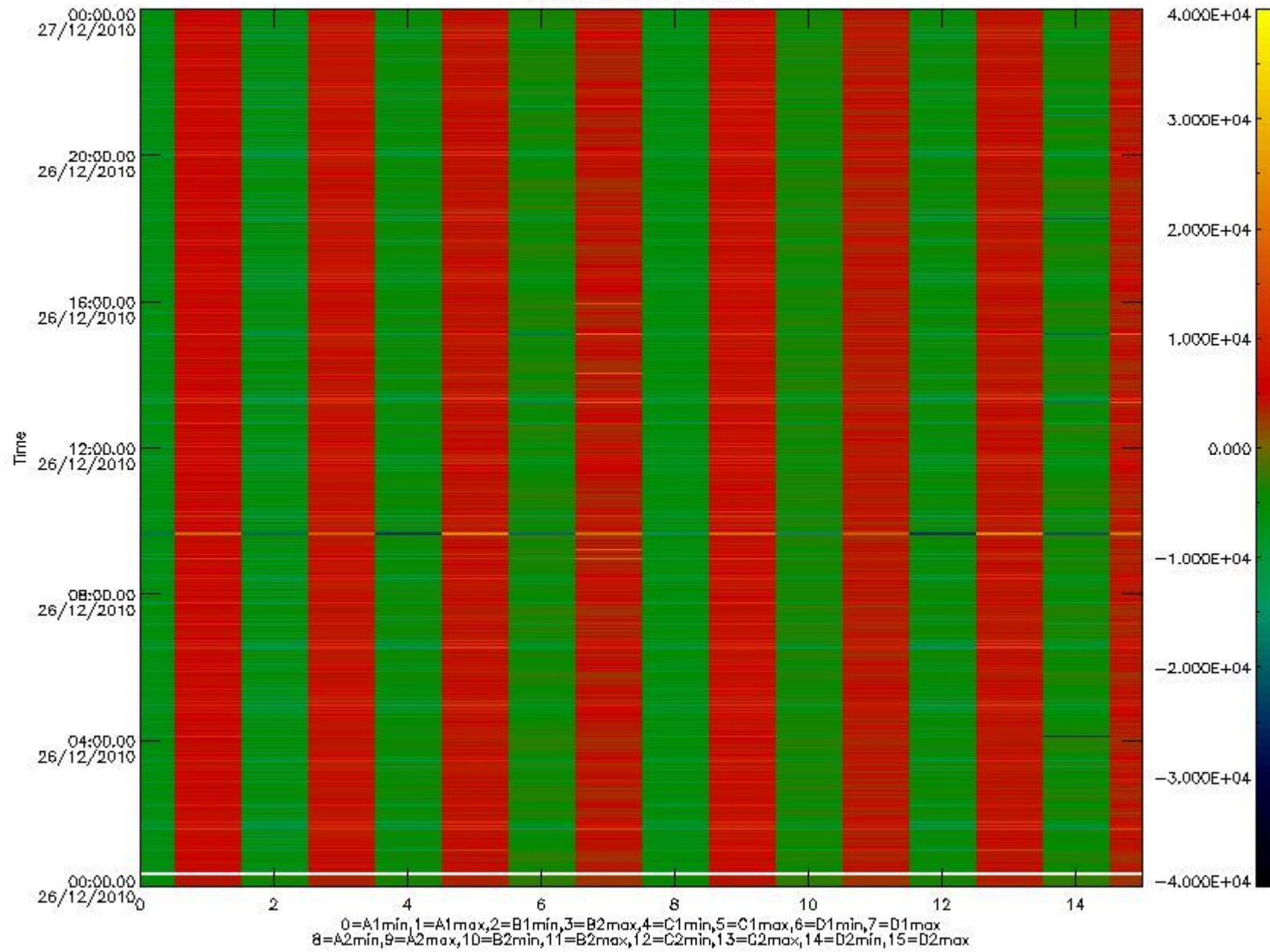


mipas\_daily\_report\_level0\_KSPT\_L0\_4504\_N\_20101226\_10.PNG

The following table shows channel statistics for all channels for this day.

Channel	Min	Max	ADC
A1	-18129	19250	16bit
B1	-19907	17190	16bit
C1	-23897	23689	16bit
D1	-32768	32767	16bit
A2	-15701	19389	16bit
B2	-18017	17644	16bit
C2	-24803	24370	16bit
D2	-32768	32767	16bit

MIPNLOP\_MIPSOUPAC\_aux\_fields\_igm\_cal, channel statistics plot  
Colour indicates value.



mipas\_daily\_report\_level0\_KSPT\_L0\_4504\_N\_20101226\_11.PNG

### 0.3 ADF monitoring

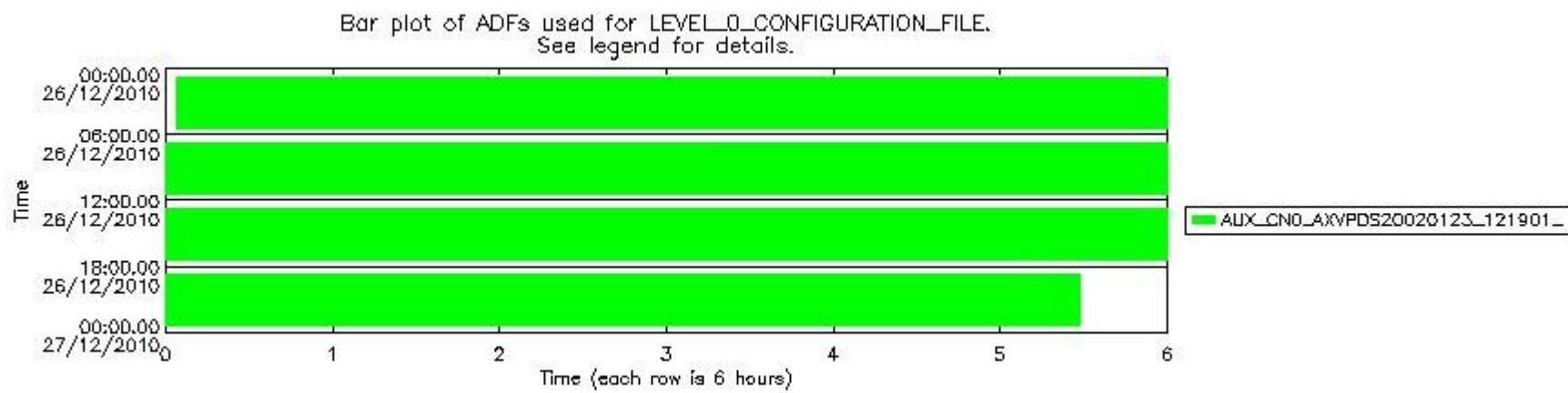
The use of ADFs is shown in two ways:

1. By means of two tables that can be used to find the ADF used for a specific product.
2. By means of plots that show changes in ADF using colours.

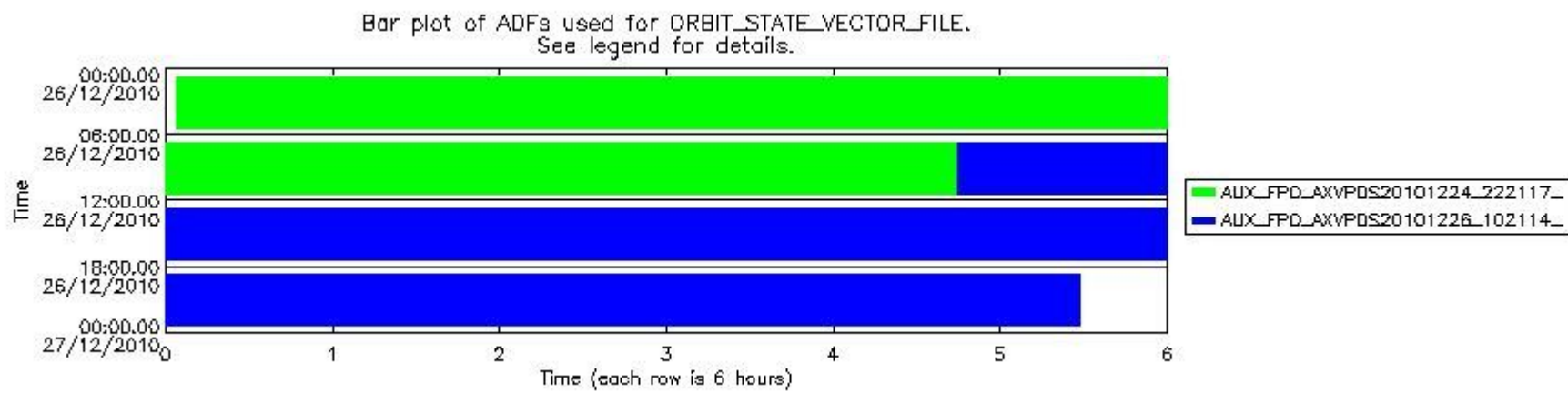
Number	ADF
0	AUX_CN0_AXVPDS20020123_121901_20020101_000000_20200101_000000
1	AUX_FPO_AXVPDS20101224_222117_20101224_195214_20110103_202553
2	AUX_FPO_AXVPDS20101226_102114_20101225_191531_20110104_212924

Number	Product name	#CN0	#FPO
--------	--------------	------	------

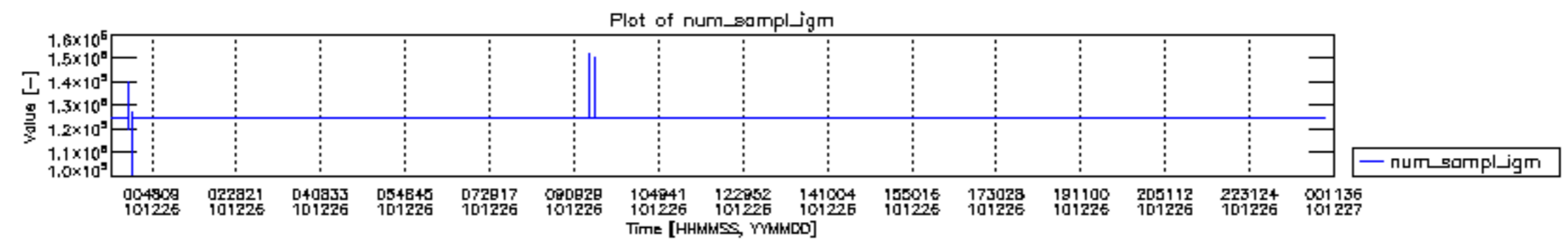
0	MIP_NL__0PNPDE20101226_000401_000059423097_00418_46122_2574.N1	0	1
1	MIP_NL__0PNPDE20101226_014205_000044413097_00419_46123_2575.N1	0	1
2	MIP_NL__0PNPDE20101226_025533_000061563097_00420_46124_2576.N1	0	1
3	MIP_NL__0PNPDE20101226_043738_000060483097_00421_46125_2577.N1	0	1
4	MIP_NL__0PNPDK20101226_061754_000041093097_00422_46126_3781.N1	0	1
5	MIP_NL__0PNPDK20101226_072529_000061673097_00423_46127_3782.N1	0	1
6	MIP_NL__0PNPDK20101226_090709_000059493097_00424_46128_3783.N1	0	1
7	MIP_NL__0PNPDK20101226_104442_000060353097_00425_46129_3784.N1	0	2
8	MIP_NL__0PNPDK20101226_122421_000059853097_00426_46130_3785.N1	0	2
9	MIP_NL__0PNPDK20101226_140309_000059253097_00427_46131_3786.N1	0	2
10	MIP_NL__0PNPDK20101226_154116_000057473097_00428_46132_3787.N1	0	2
11	MIP_NL__0PNPDK20101226_171559_000060483097_00429_46133_3788.N1	0	2
12	MIP_NL__0PNPDK20101226_185542_000059713097_00430_46134_3789.N1	0	2
13	MIP_NL__0PNPDE20101226_203323_000045003097_00431_46135_2578.N1	0	2
14	MIP_NL__0PNPDE20101226_214721_000060653097_00431_46135_2579.N1	0	2

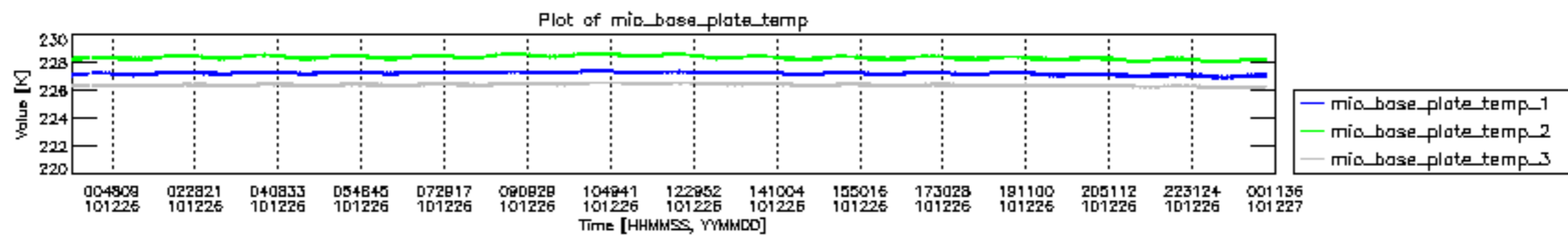


mipas\_daily\_report\_level0\_KSPT\_L0\_4504\_N\_20101226\_12.PNG

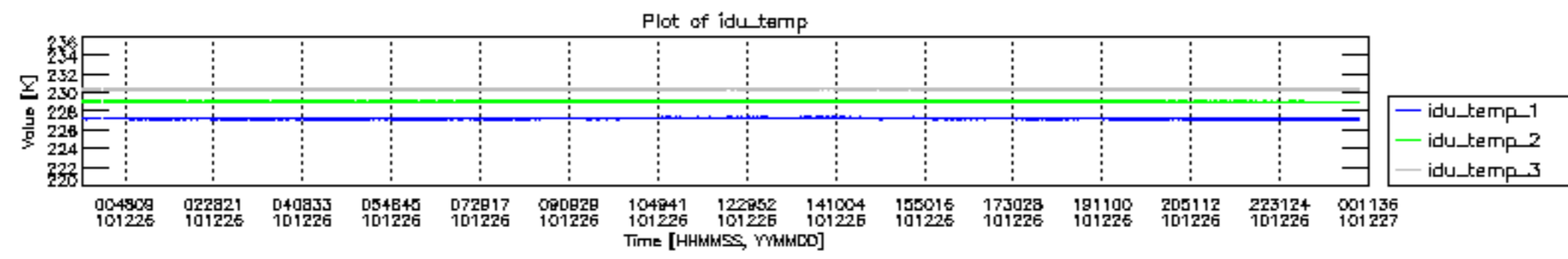


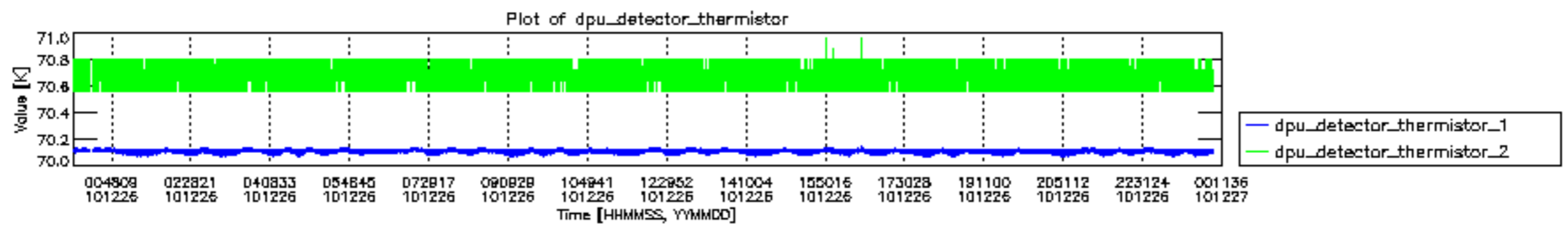
mipas\_daily\_report\_level0\_KSPT\_L0\_4504\_N\_20101226\_13.PNG

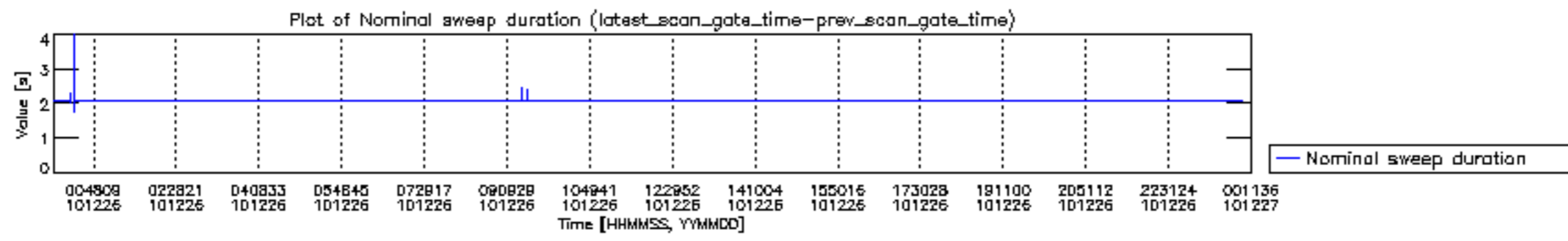


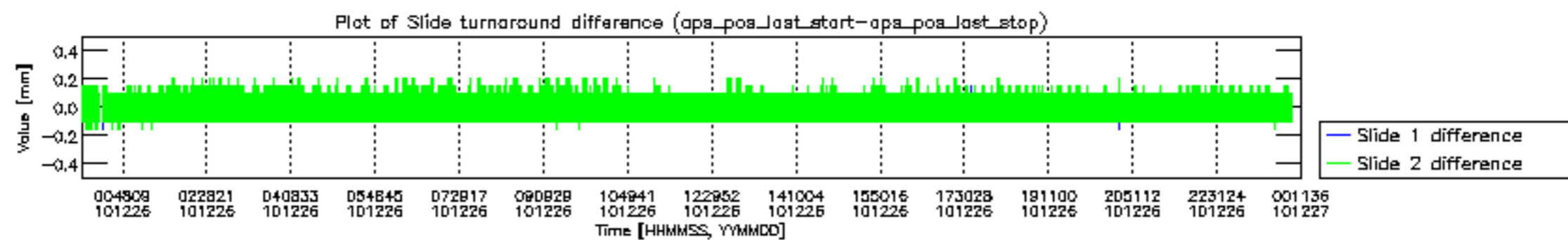


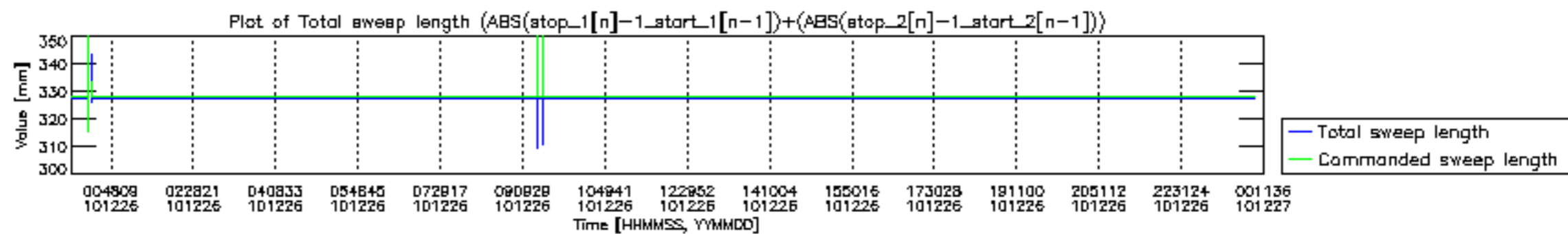


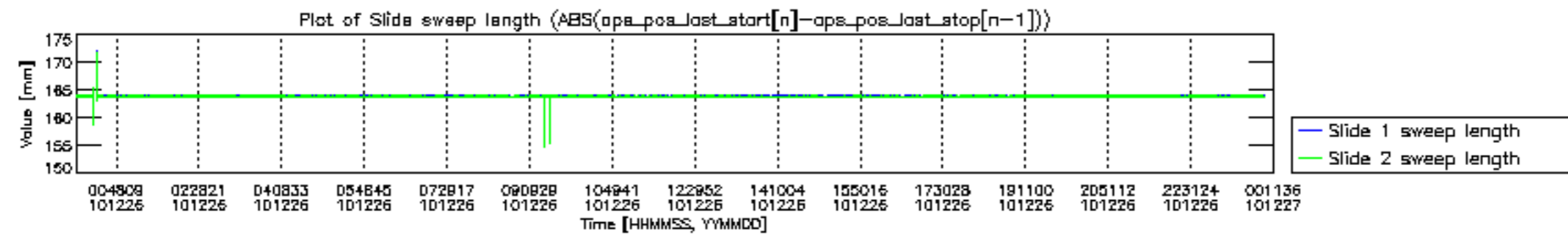


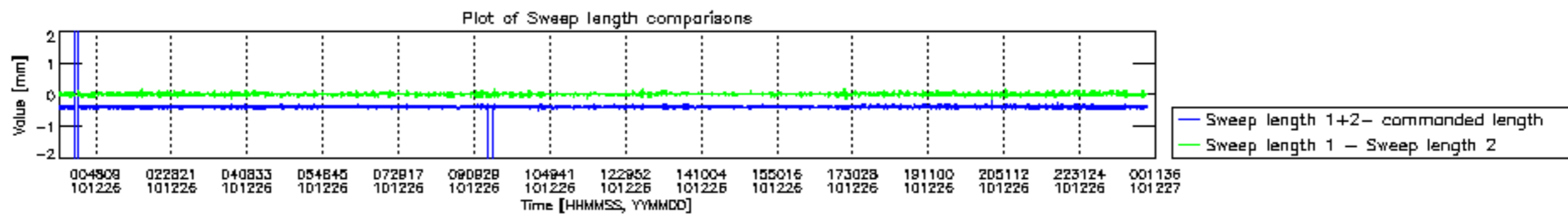


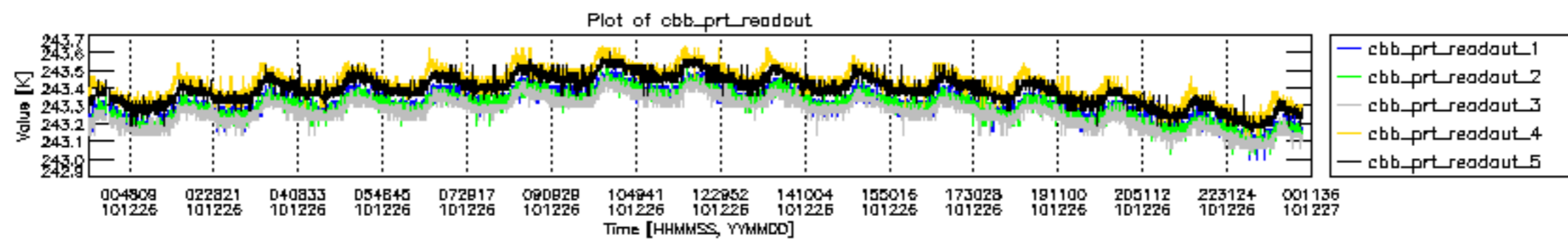




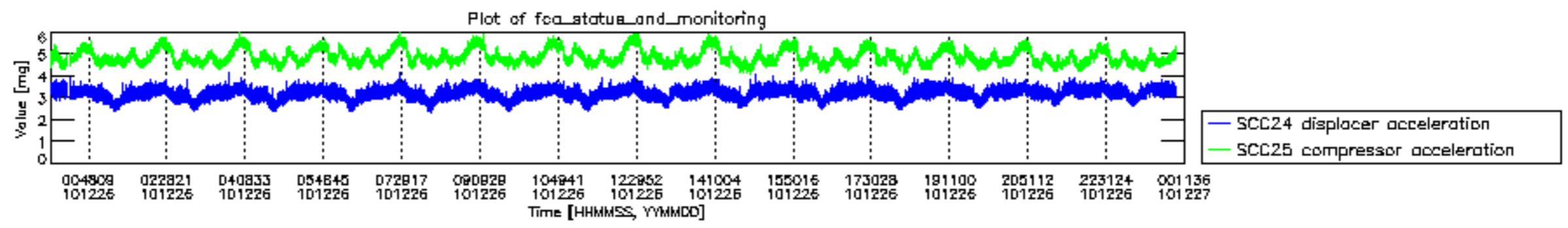












MIPNLOP\_MIPSOUPAC\_aux\_fields\_igm\_cal, channel statistics plot  
 Colour indicates value.

