

0. MIPAS Daily Report for level 0 products

[0.1 General Info](#)

[0.2 Instrument Operational Performance Parameters](#)

[0.3 ADF monitoring](#)

0.1 General Info

This report contains a daily analysis on parameters extracted from MIPAS level 0 data (The MIP_NL__0P product).

0.1.1 Report summary

The table below shows general characteristics of the data that are included into this report.

Item	Value
Report version	v1.6 08-11-2010
Time of report generation	29DEC2010 05:24:27
Data source version	KSPT_L0/4504-N
Processing scope for products	24DEC2010 00:00:00 to 25DEC2010 00:00:00
Start time of first product within scope	24DEC2010 01:17:47
Stop time of last product within scope	25DEC2010 00:42:52
Total number of level 0 products	13
Number of level 0 products with errors	0

0.1.2 Product Quality Indicators per product

The following table shows a summary for each product used in this report.

#	Product name	Start time	Stop time	Prod err	ISP err sign	ISP miss sign	ISP disc sign	rs sign
0	MIP_NL__0PNPDE20101224_011747_000102683097_00390_46094_2562.N1	24DEC2010 01:17:47	24DEC2010 04:08:55	0	0	0	0	0
1	MIP_NL__0PNPDE20101224_040821_000061943097_00392_46096_2563.N1	24DEC2010 04:08:21	24DEC2010 05:51:35	0	0	0	0	0
2	MIP_NL__0PNPDE20101224_055104_000061873097_00393_46097_2564.N1	24DEC2010 05:51:04	24DEC2010 07:34:11	0	0	0	0	0
3	MIP_NL__0PNPDK20101224_073337_000038383097_00394_46098_3764.N1	24DEC2010 07:33:37	24DEC2010 08:37:35	0	0	0	0	0
4	MIP_NL__0PNPDK20101224_101816_000060143097_00396_46100_3766.N1	24DEC2010 10:18:16	24DEC2010 11:58:31	0	0	0	0	0
5	MIP_NL__0PNPDK20101224_115734_000059683097_00397_46101_3767.N1	24DEC2010 11:57:34	24DEC2010 13:37:03	0	0	0	0	0
6	MIP_NL__0PNPDK20101224_133604_000059943097_00398_46102_3768.N1	24DEC2010 13:36:04	24DEC2010 15:15:58	0	0	0	0	0
7	MIP_NL__0PNPDK20101224_151514_000058513097_00399_46103_3769.N1	24DEC2010 15:15:14	24DEC2010 16:52:45	0	0	0	0	0
8	MIP_NL__0PNPDK20101224_165101_000058773097_00400_46104_3770.N1	24DEC2010 16:51:01	24DEC2010 18:28:58	0	0	0	0	0
9	MIP_NL__0PNPDK20101224_182753_000060713097_00401_46105_3771.N1	24DEC2010 18:27:53	24DEC2010 20:09:04	0	0	0	0	0
10	MIP_NL__0PNPDE20101224_200707_000043973097_00402_46106_6227.N1	24DEC2010 20:07:07	24DEC2010 21:20:24	0	0	0	0	0
11	MIP_NL__0PNPDE20101224_211930_000061113097_00402_46106_6228.N1	24DEC2010 21:19:30	24DEC2010 23:01:20	0	0	0	0	0
12	MIP_NL__0PNPDE20101224_230026_000061463097_00403_46107_6229.N1	24DEC2010 23:00:26	25DEC2010 00:42:52	0	0	0	0	0

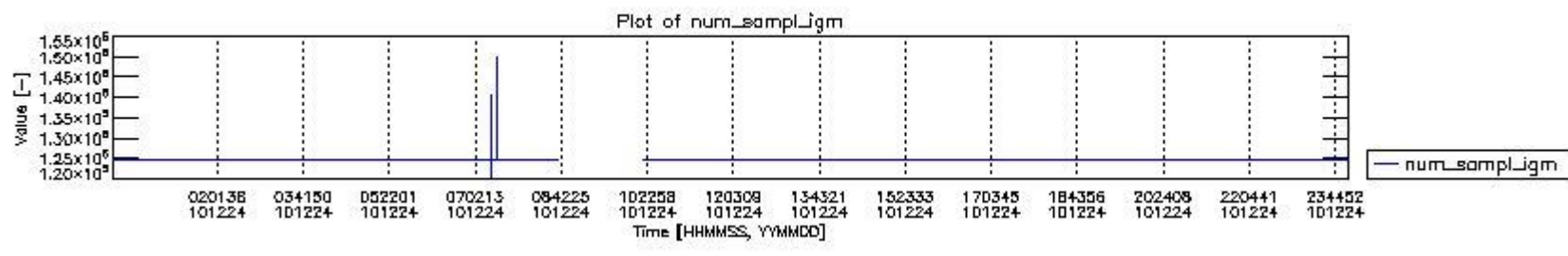
0.2 Instrument Operational Performance Parameters

The following plots give an overview of various instrument parameters for this day. The instrument parameters are part of the auxiliary data field within the source packets of the MIP_NL__0P product. The auxiliary data is normally included twice per interferogram. Note that only the first packet is currently included in monitoring.

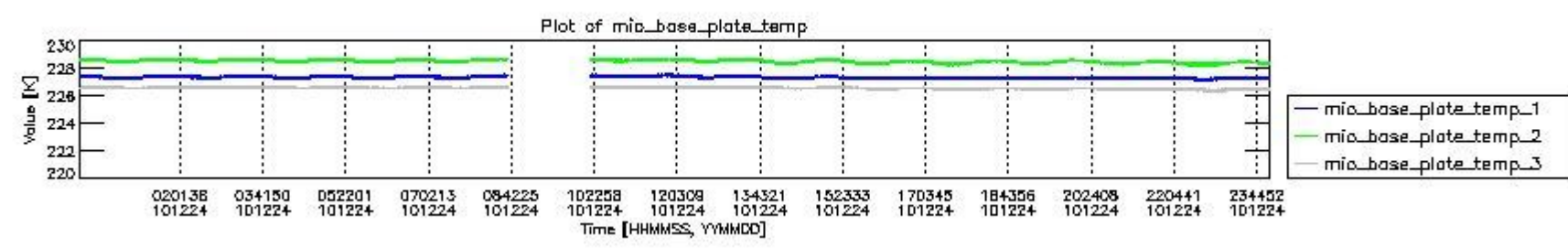
The following table shows the counts of various interferogram number of samples

Number of igm samples	Count [#]	Count [%]
120543	1	0.0025843132
124800	35945	92.893139
124803	2744	7.0913555
127382	1	0.0025843132
136418	1	0.0025843132

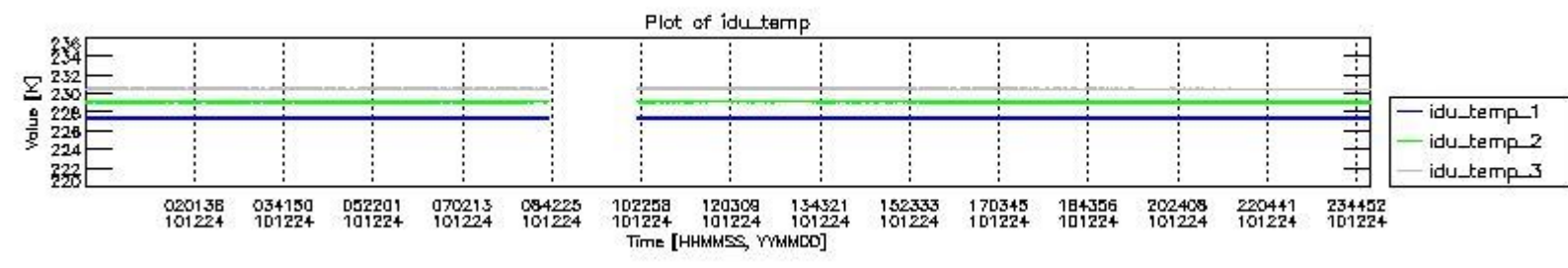
140675	1	0.0025843132
147514	1	0.0025843132
150096	1	0.0025843132



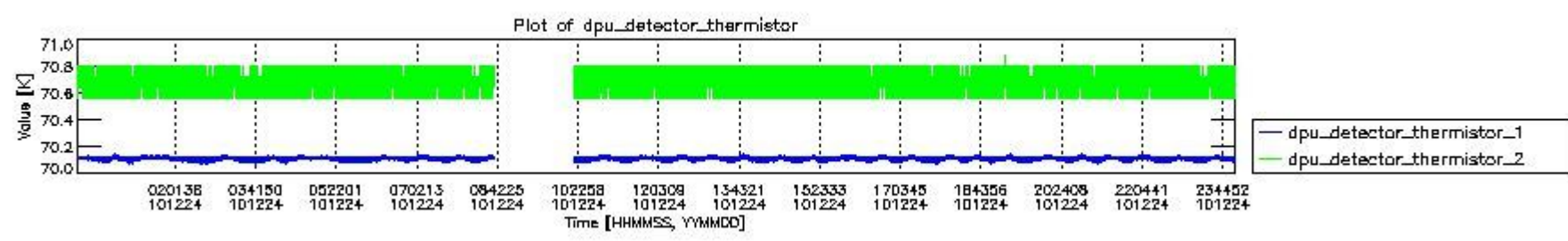
mipas_daily_report_level0_KSPT_L0_4504_N_20101224_0.PNG



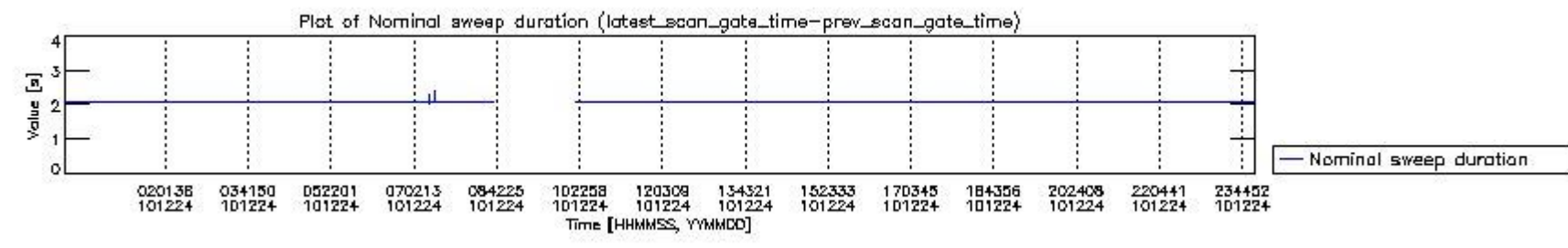
mipas_daily_report_level0_KSPT_L0_4504_N_20101224_1.PNG



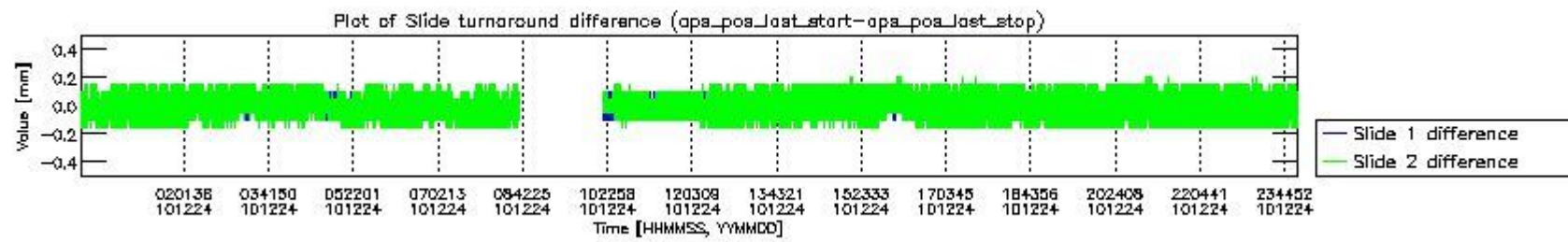
mipas_daily_report_level0_KSPT_L0_4504_N_20101224_2.PNG



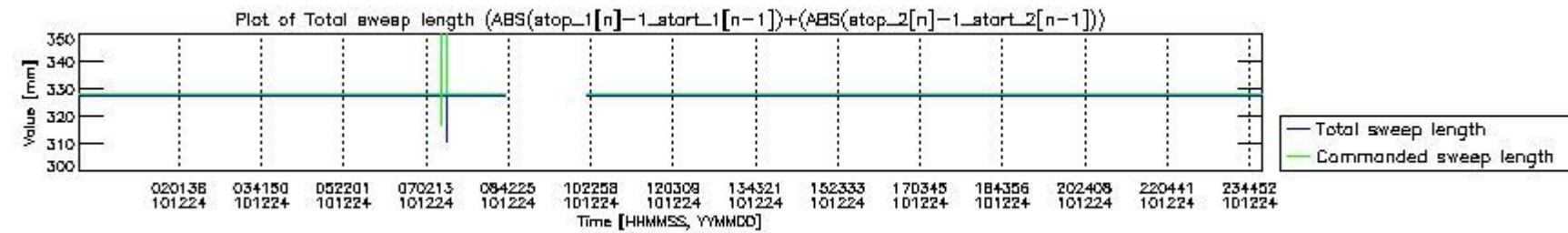
mipas_daily_report_level0_KSPT_L0_4504_N_20101224_3.PNG



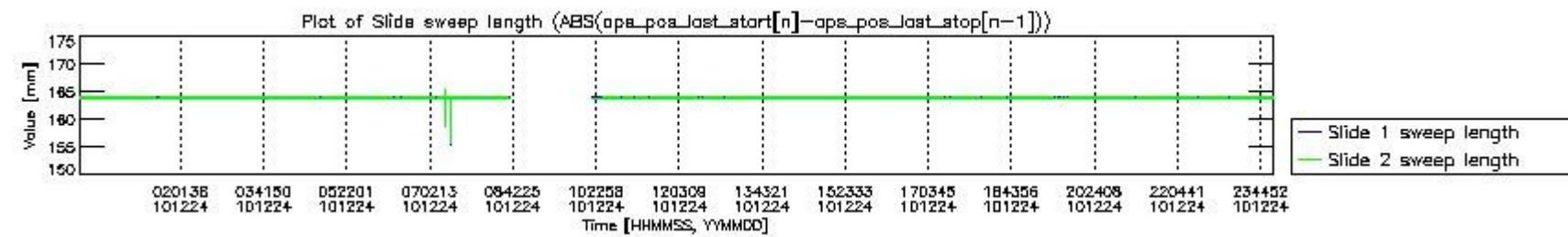
mipas_daily_report_level0_KSPT_L0_4504_N_20101224_4.PNG



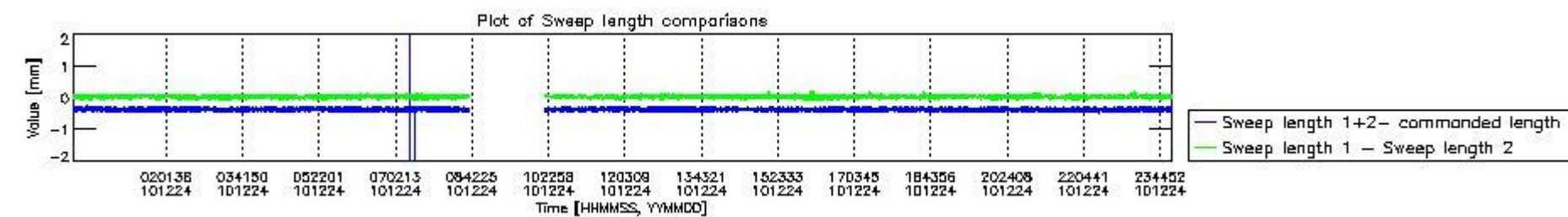
mipas_daily_report_level0_KSPT_L0_4504_N_20101224_5.PNG



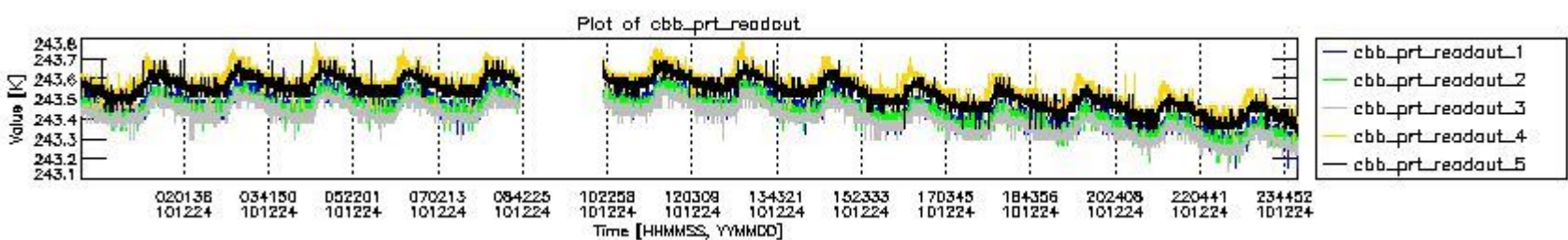
mipas_daily_report_level0_KSPT_L0_4504_N_20101224_6.PNG



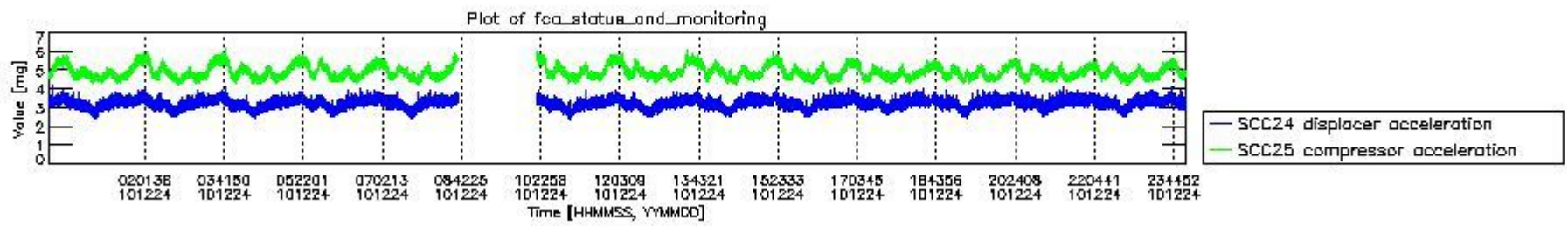
mipas_daily_report_level0_KSPT_L0_4504_N_20101224_7.PNG



mipas_daily_report_level0_KSPT_L0_4504_N_20101224_8.PNG



mipas_daily_report_level0_KSPT_L0_4504_N_20101224_9.PNG

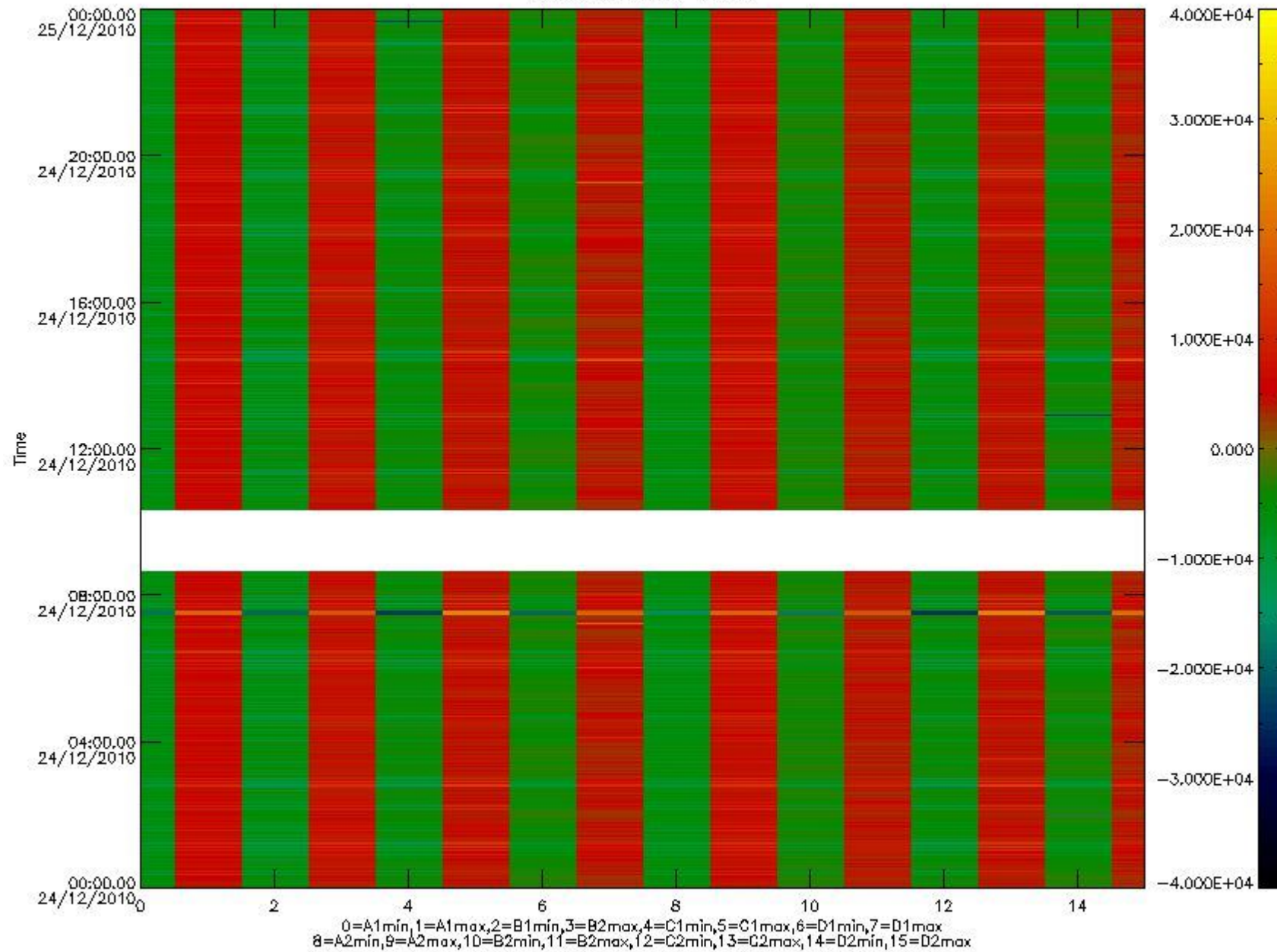


mipas_daily_report_level0_KSPT_L0_4504_N_20101224_10.PNG

The following table shows channel statistics for all channels for this day.

Channel	Min	Max	ADC
A1	-18130	19247	16bit
B1	-19899	17193	16bit
C1	-24774	23656	16bit
D1	-32768	32767	16bit
A2	-15692	19390	16bit
B2	-18005	17654	16bit
C2	-24740	24775	16bit
D2	-32768	32767	16bit

MIPNLOP_MIPSOUPAC_aux_fields_igm_cal, channel statistics plot
Colour indicates value.



mipas_daily_report_level0_KSPT_L0_4504_N_20101224_11.PNG

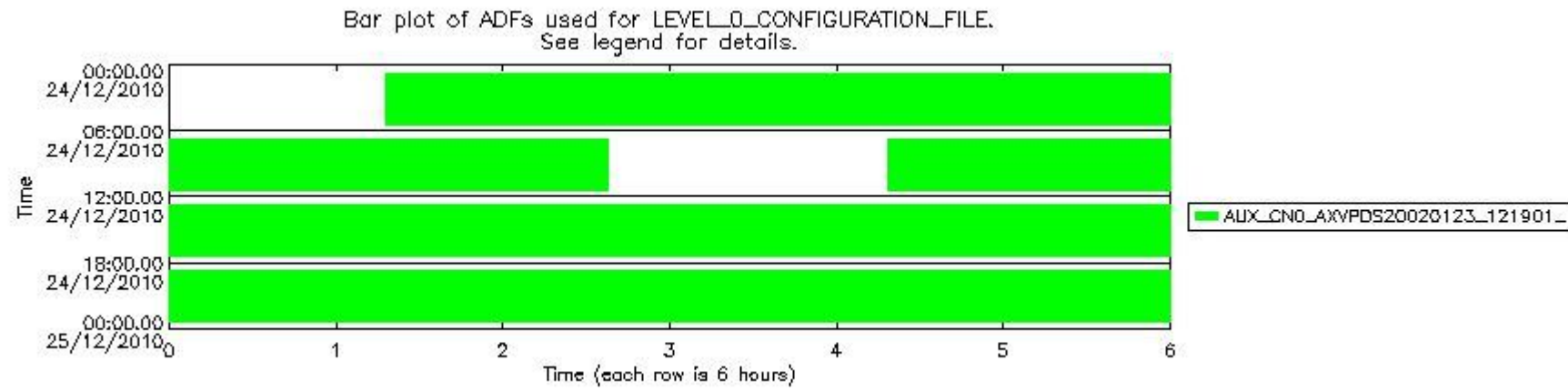
0.3 ADF monitoring

The use of ADFs is shown in two ways:

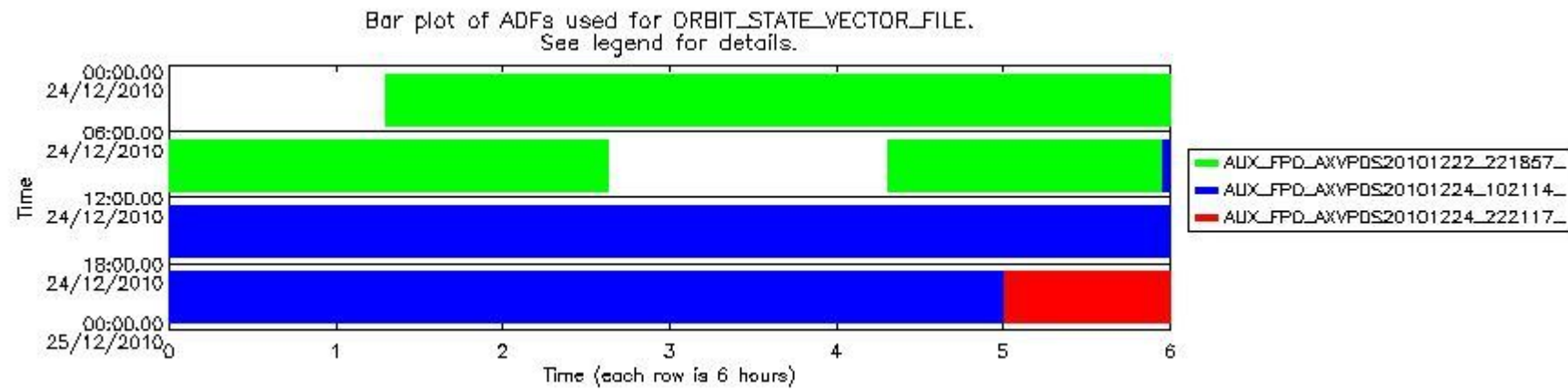
1. By means of two tables that can be used to find the ADF used for a specific product.
2. By means of plots that show changes in ADF using colours.

Number	ADF
0	AUX_CN0_AXVPDS20020123_121901_20020101_000000_20200101_000000
1	AUX_FPO_AXVPDS20101222_221857_20101222_192527_20110101_213921
2	AUX_FPO_AXVPDS20101224_102114_20101223_184844_20110102_210237
3	AUX_FPO_AXVPDS20101224_222117_20101224_195214_20110103_202553

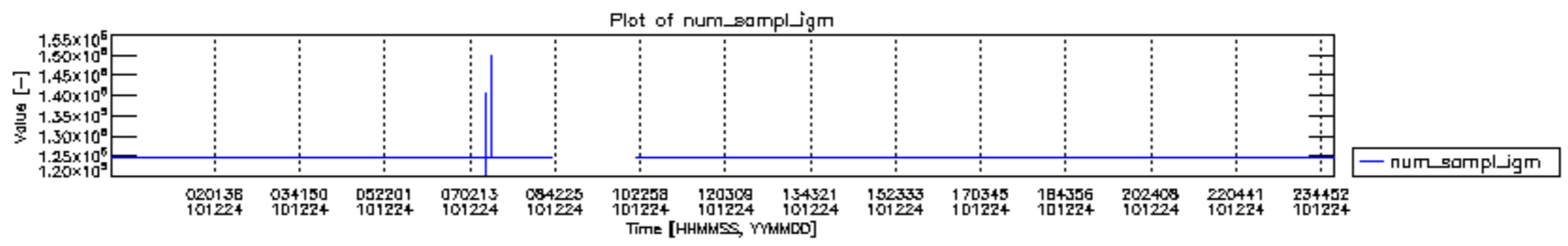
Number	Product name	#CNO	#FPO
0	MIP_NL__0PNPDE20101224_011747_000102683097_00390_46094_2562.N1	0	1
1	MIP_NL__0PNPDE20101224_040821_000061943097_00392_46096_2563.N1	0	1
2	MIP_NL__0PNPDE20101224_055104_000061873097_00393_46097_2564.N1	0	1
3	MIP_NL__0PNPDK20101224_073337_000038383097_00394_46098_3764.N1	0	1
4	MIP_NL__0PNPDK20101224_101816_000060143097_00396_46100_3766.N1	0	1
5	MIP_NL__0PNPDK20101224_115734_000059683097_00397_46101_3767.N1	0	2
6	MIP_NL__0PNPDK20101224_133604_000059943097_00398_46102_3768.N1	0	2
7	MIP_NL__0PNPDK20101224_151514_000058513097_00399_46103_3769.N1	0	2
8	MIP_NL__0PNPDK20101224_165101_000058773097_00400_46104_3770.N1	0	2
9	MIP_NL__0PNPDK20101224_182753_000060713097_00401_46105_3771.N1	0	2
10	MIP_NL__0PNPDE20101224_200707_000043973097_00402_46106_6227.N1	0	2
11	MIP_NL__0PNPDE20101224_211930_000061113097_00402_46106_6228.N1	0	2
12	MIP_NL__0PNPDE20101224_230026_000061463097_00403_46107_6229.N1	0	3

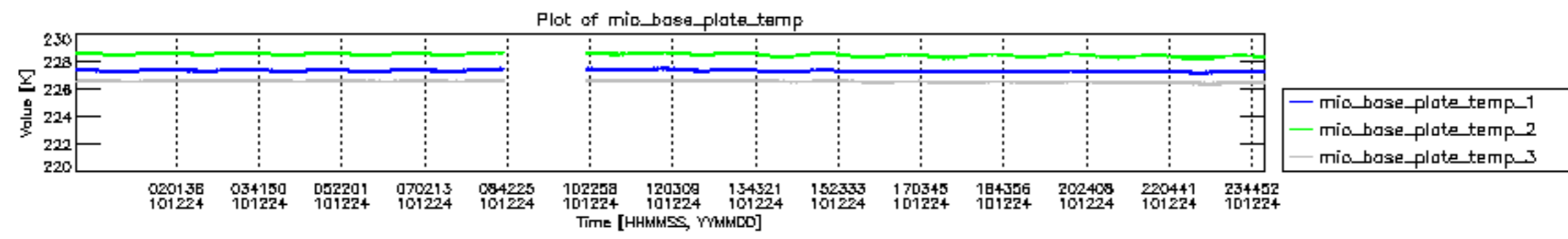


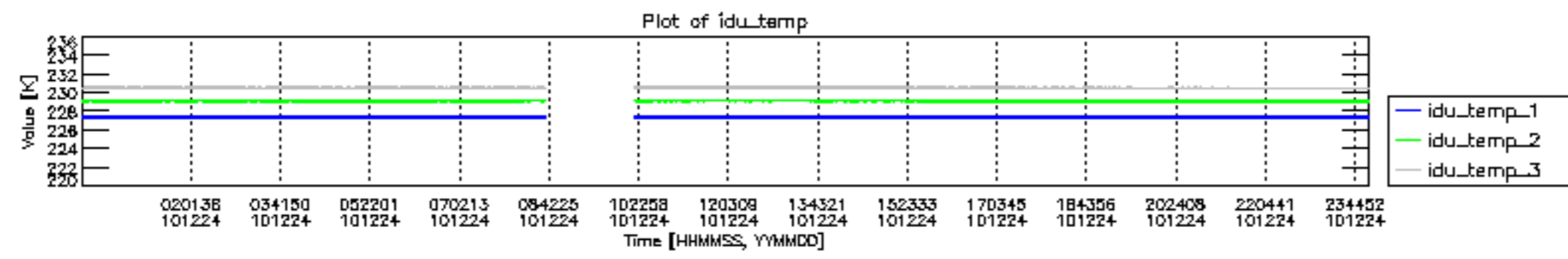
mipas_daily_report_level0_KSPT_L0_4504_N_20101224_12.PNG

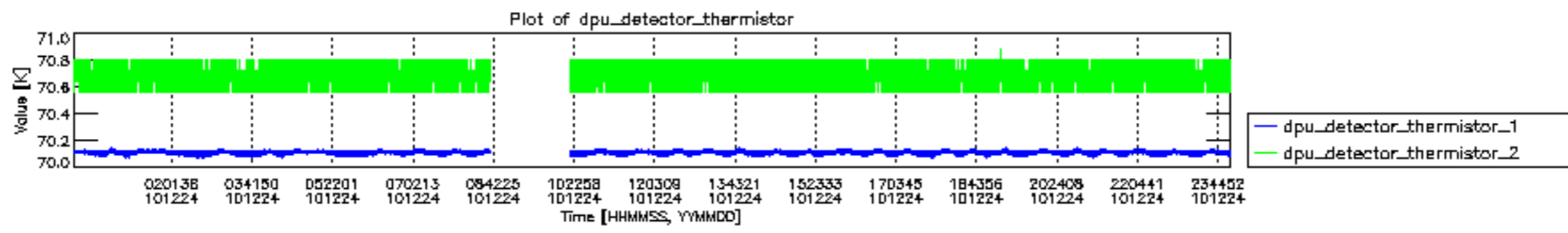


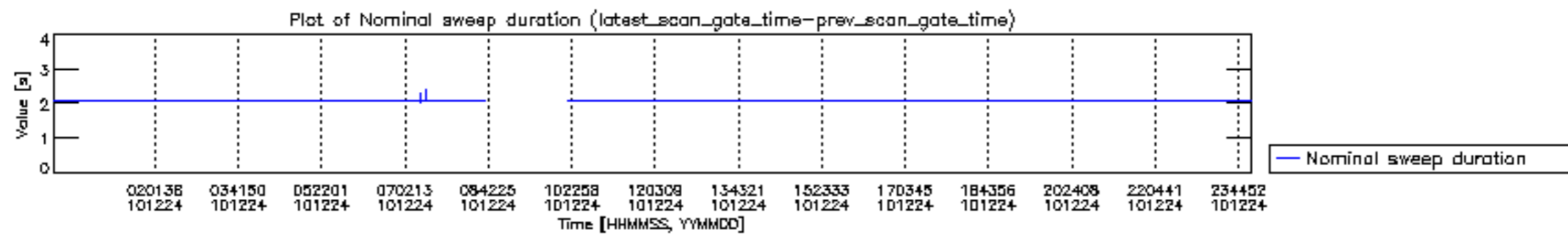
mipas_daily_report_level0_KSPT_L0_4504_N_20101224_13.PNG

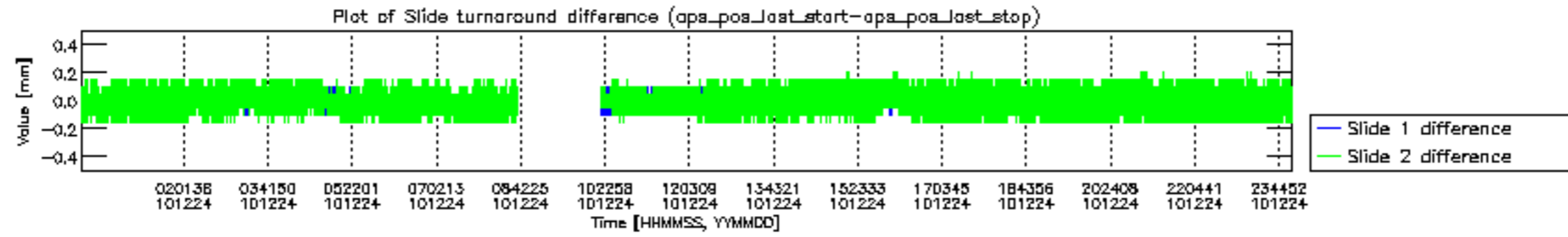


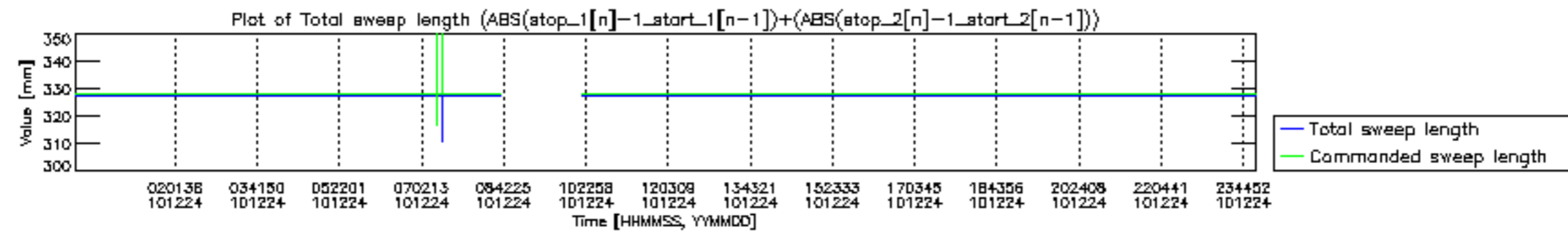


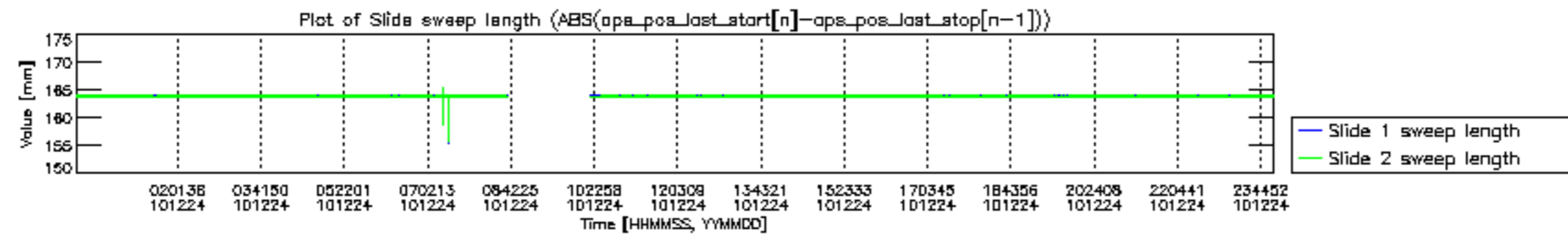


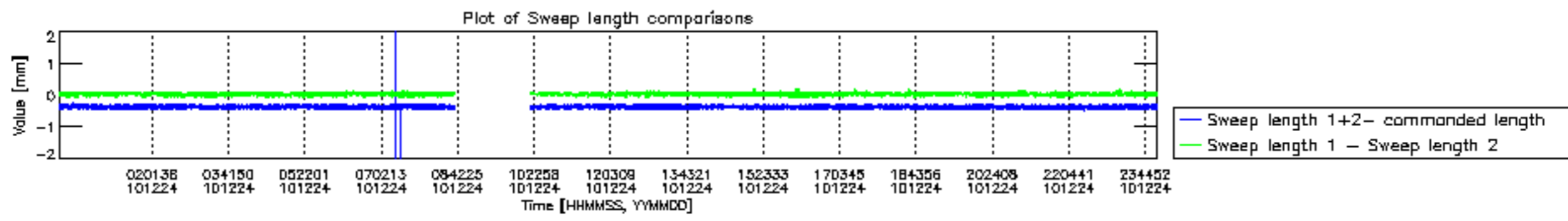


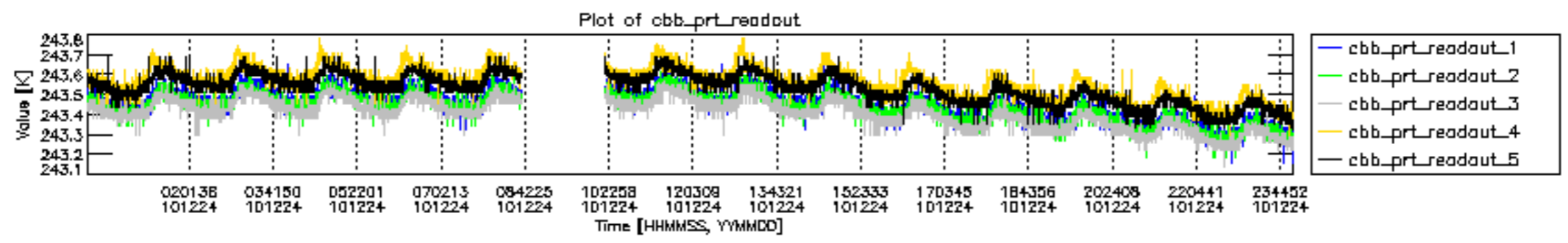


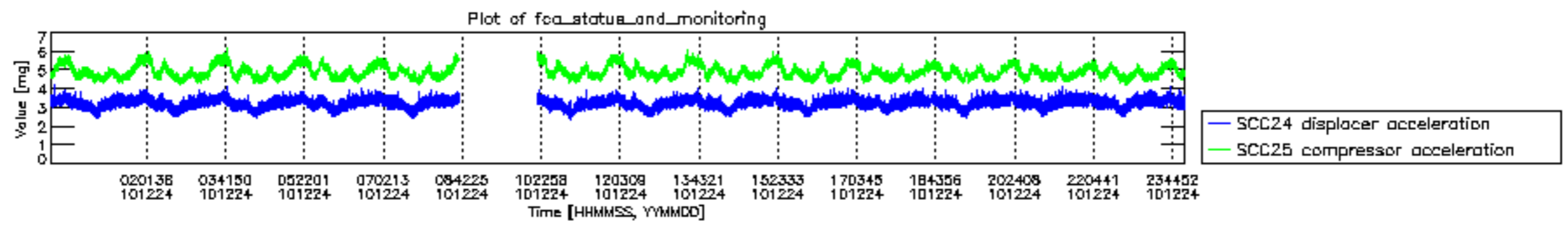




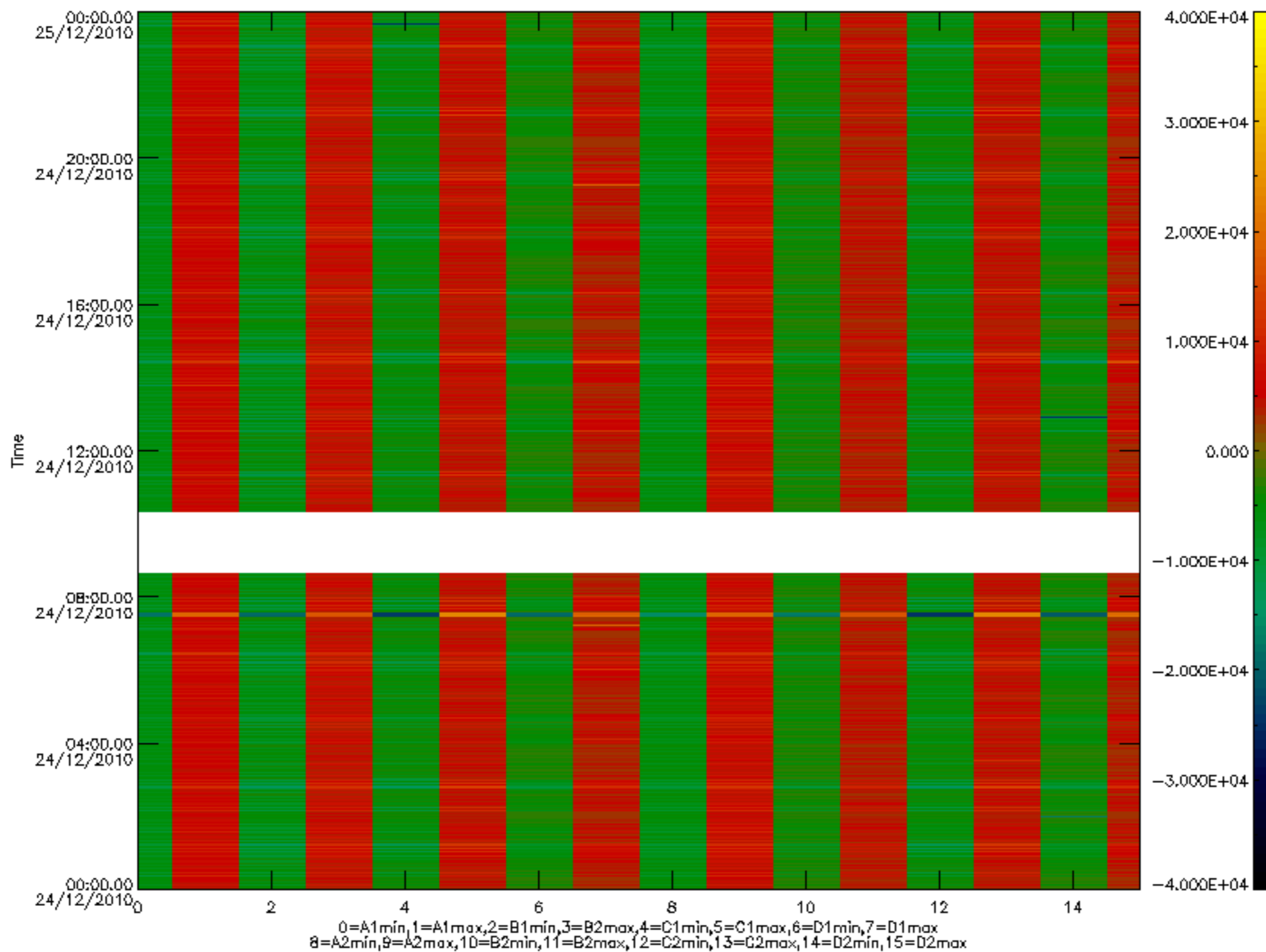


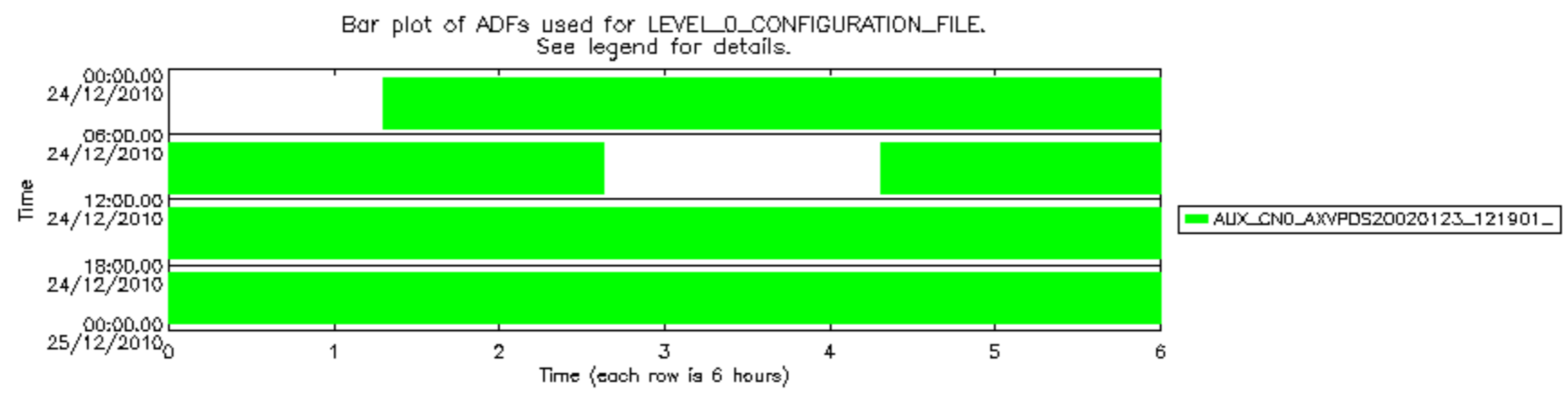






MIPNLOP_MIPSOUPAC_aux_fields_igm_cal, channel statistics plot
 Colour indicates value.





Bar plot of ADFs used for ORBIT_STATE_VECTOR_FILE.
See legend for details.

