

## 0. MIPAS Daily Report for level 0 products

### [0.1 General Info](#)

### [0.2 Instrument Operational Performance Parameters](#)

### [0.3 ADF monitoring](#)

## 0.1 General Info

This report contains a daily analysis on parameters extracted from MIPAS level 0 data (The MIP\_NL\_\_0P product).

### 0.1.1 Report summary

The table below shows general characteristics of the data that are included into this report.

Item	Value
Report version	v1.6 08-11-2010
Time of report generation	26DEC2010 05:27:34
Data source version	KSPT_L0/4504-N
Processing scope for products	21DEC2010 00:00:00 to 22DEC2010 00:00:00
Start time of first product within scope	21DEC2010 06:00:31
Stop time of last product within scope	22DEC2010 00:52:07
Total number of level 0 products	12
Number of level 0 products with errors	0

### 0.1.2 Product Quality Indicators per product

The following table shows a summary for each product used in this report.

#	Product name	Start time	Stop time	Prod err	ISP err sign	ISP miss sign	ISP disc sign	rs sign
0	MIP_NL__0PNPDK20101221_060031_000041683097_00350_46054_3738.N1	21DEC2010 06:00:31	21DEC2010 07:09:59	0	0	0	0	0
1	MIP_NL__0PNPDK20101221_070829_000060393097_00351_46055_3739.N1	21DEC2010 07:08:29	21DEC2010 08:49:08	0	0	0	0	0
2	MIP_NL__0PNPDK20101221_084757_000061043097_00352_46056_3740.N1	21DEC2010 08:47:57	21DEC2010 10:29:41	0	0	0	0	0
3	MIP_NL__0PNPDK20101221_102803_000060923097_00353_46057_3741.N1	21DEC2010 10:28:03	21DEC2010 12:09:34	0	0	0	0	0
4	MIP_NL__0PNPDK20101221_120754_000059123097_00354_46058_3742.N1	21DEC2010 12:07:54	21DEC2010 13:46:26	0	0	0	0	0
5	MIP_NL__0PNPDK20101221_134528_000054253097_00355_46059_3743.N1	21DEC2010 13:45:28	21DEC2010 15:15:53	0	0	0	0	0
6	MIP_NL__0PNPDK20101221_161737_000027343097_00356_46060_3744.N1	21DEC2010 16:17:37	21DEC2010 17:03:12	0	0	0	0	0
7	MIP_NL__0PNPDK20101221_170127_000058833097_00357_46061_3745.N1	21DEC2010 17:01:27	21DEC2010 18:39:30	0	0	0	0	0
8	MIP_NL__0PNPDK20101221_183825_000060273097_00358_46062_3746.N1	21DEC2010 18:38:25	21DEC2010 20:18:52	0	0	0	0	0
9	MIP_NL__0PNPDE20101221_201702_000044083097_00359_46063_2545.N1	21DEC2010 20:17:02	21DEC2010 21:30:29	0	0	0	0	0
10	MIP_NL__0PNPDE20101221_212931_000061213097_00359_46063_2546.N1	21DEC2010 21:29:31	21DEC2010 23:11:32	0	0	0	0	0
11	MIP_NL__0PNPDE20101221_231029_000060983097_00360_46064_2547.N1	21DEC2010 23:10:29	22DEC2010 00:52:07	0	0	0	0	0

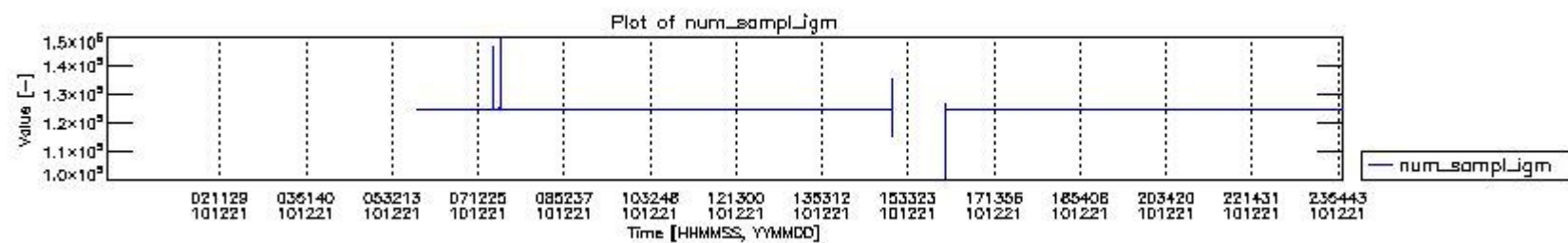
## 0.2 Instrument Operational Performance Parameters

The following plots give an overview of various instrument parameters for this day. The instrument parameters are part of the auxiliary data field within the source packets of the MIP\_NL\_\_0P product. The auxiliary data is normally included twice per interferogram. Note that only the first packet is currently included in monitoring.

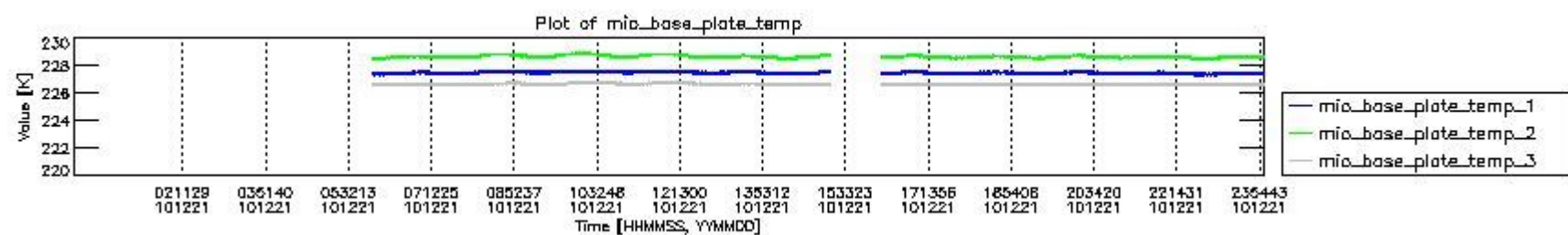
The following table shows the counts of various interferogram number of samples

Number of igm samples	Count [#]	Count [%]
100632	1	0.0033957010
115116	1	0.0033957010
124800	27354	92.886006
124803	2083	7.0732453
125564	1	0.0033957010
125746	1	0.0033957010

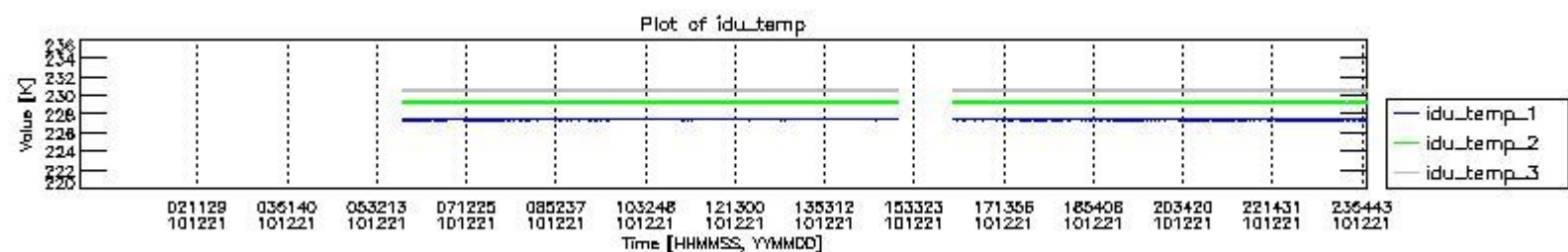
125884	1	0.0033957010
126968	1	0.0033957010
127233	1	0.0033957010
135248	1	0.0033957010
145878	1	0.0033957010
146824	1	0.0033957010
147365	1	0.0033957010
149798	1	0.0033957010



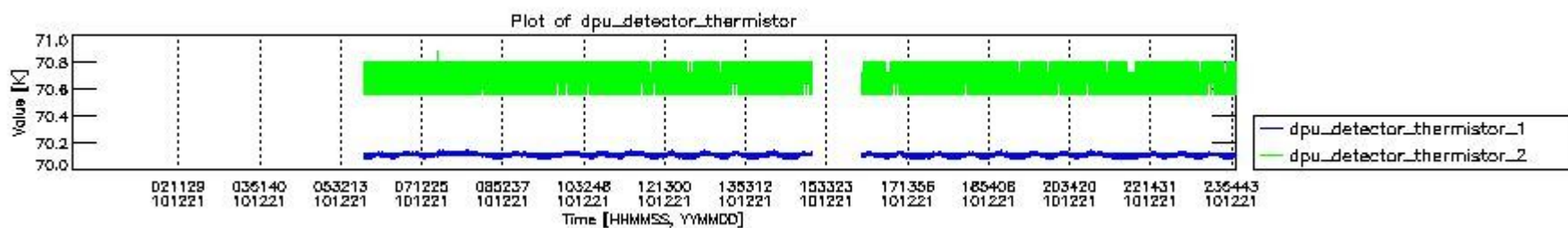
mipas\_daily\_report\_level0\_KSPT\_L0\_4504\_N\_20101221\_0.PNG



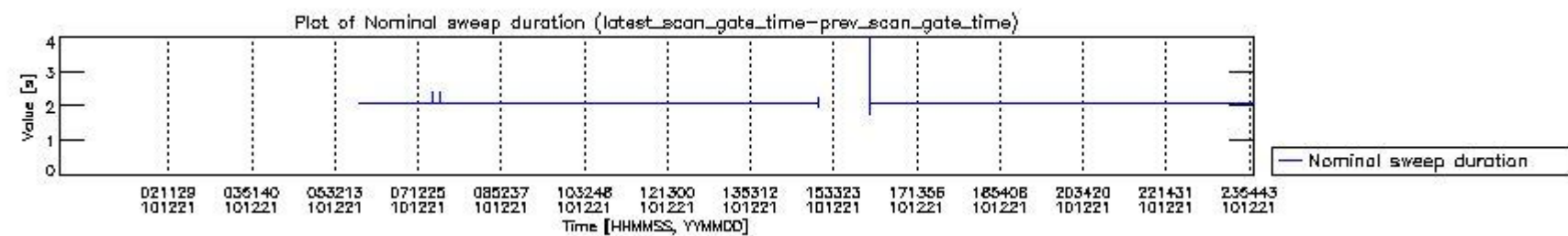
mipas\_daily\_report\_level0\_KSPT\_L0\_4504\_N\_20101221\_1.PNG



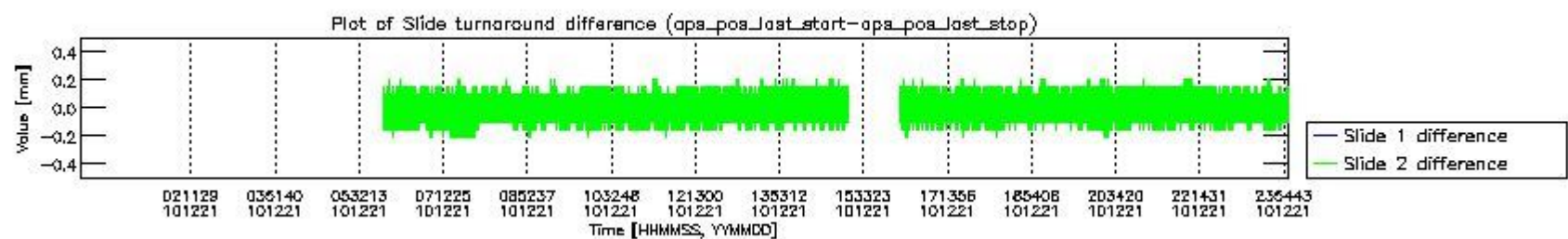
mipas\_daily\_report\_level0\_KSPT\_L0\_4504\_N\_20101221\_2.PNG



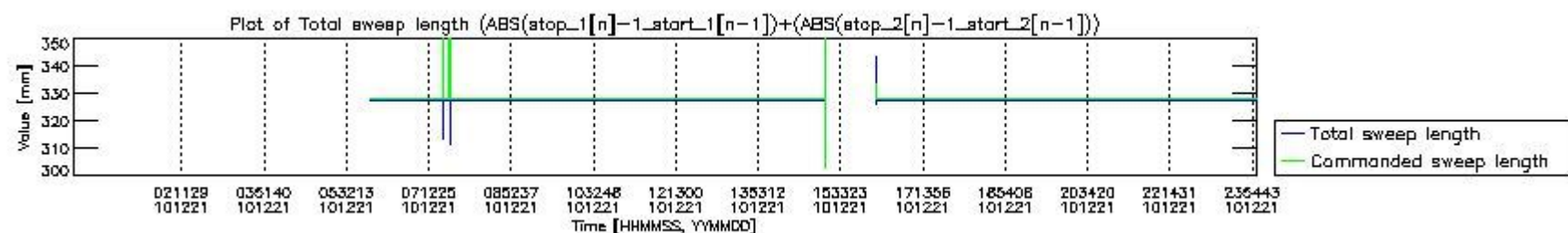
mipas\_daily\_report\_level0\_KSPT\_L0\_4504\_N\_20101221\_3.PNG



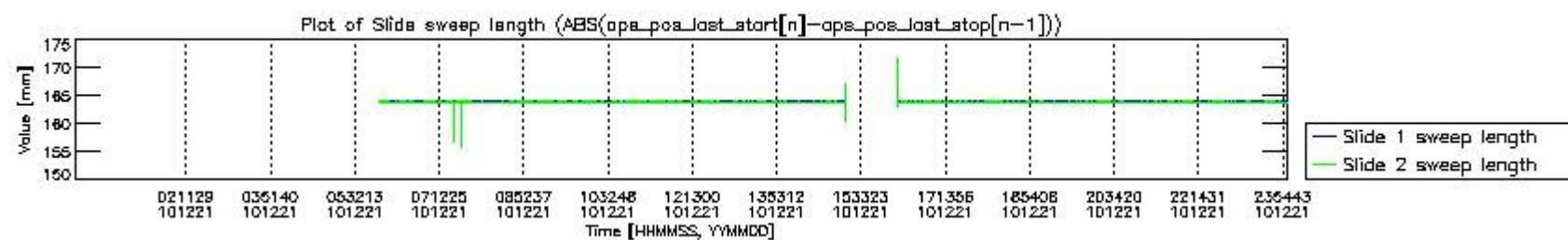
mipas\_daily\_report\_level0\_KSPT\_L0\_4504\_N\_20101221\_4.PNG



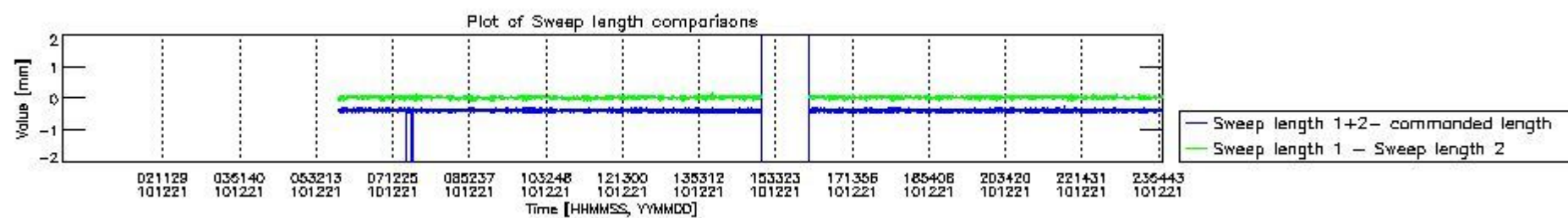
mipas\_daily\_report\_level0\_KSPT\_L0\_4504\_N\_20101221\_5.PNG



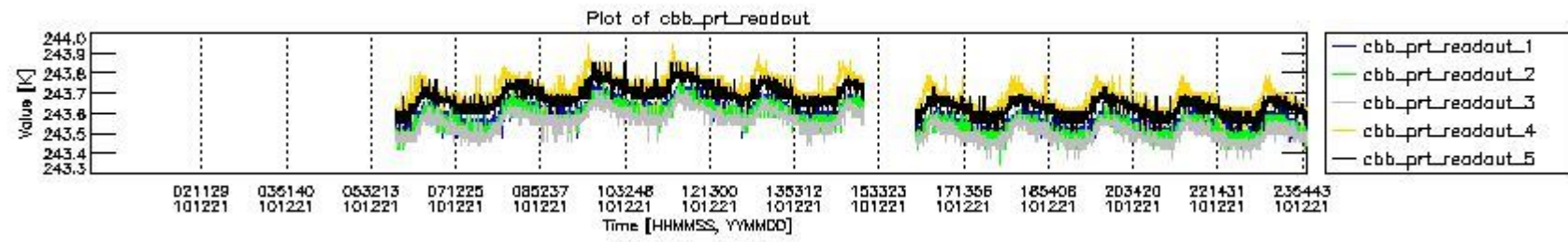
mipas\_daily\_report\_level0\_KSPT\_L0\_4504\_N\_20101221\_6.PNG



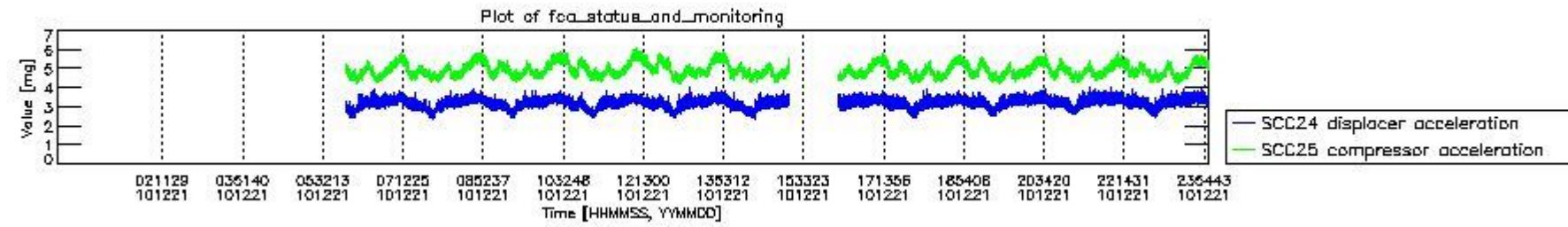
mipas\_daily\_report\_level0\_KSPT\_L0\_4504\_N\_20101221\_7.PNG



mipas\_daily\_report\_level0\_KSPT\_L0\_4504\_N\_20101221\_8.PNG



mipas\_daily\_report\_level0\_KSPT\_L0\_4504\_N\_20101221\_9.PNG

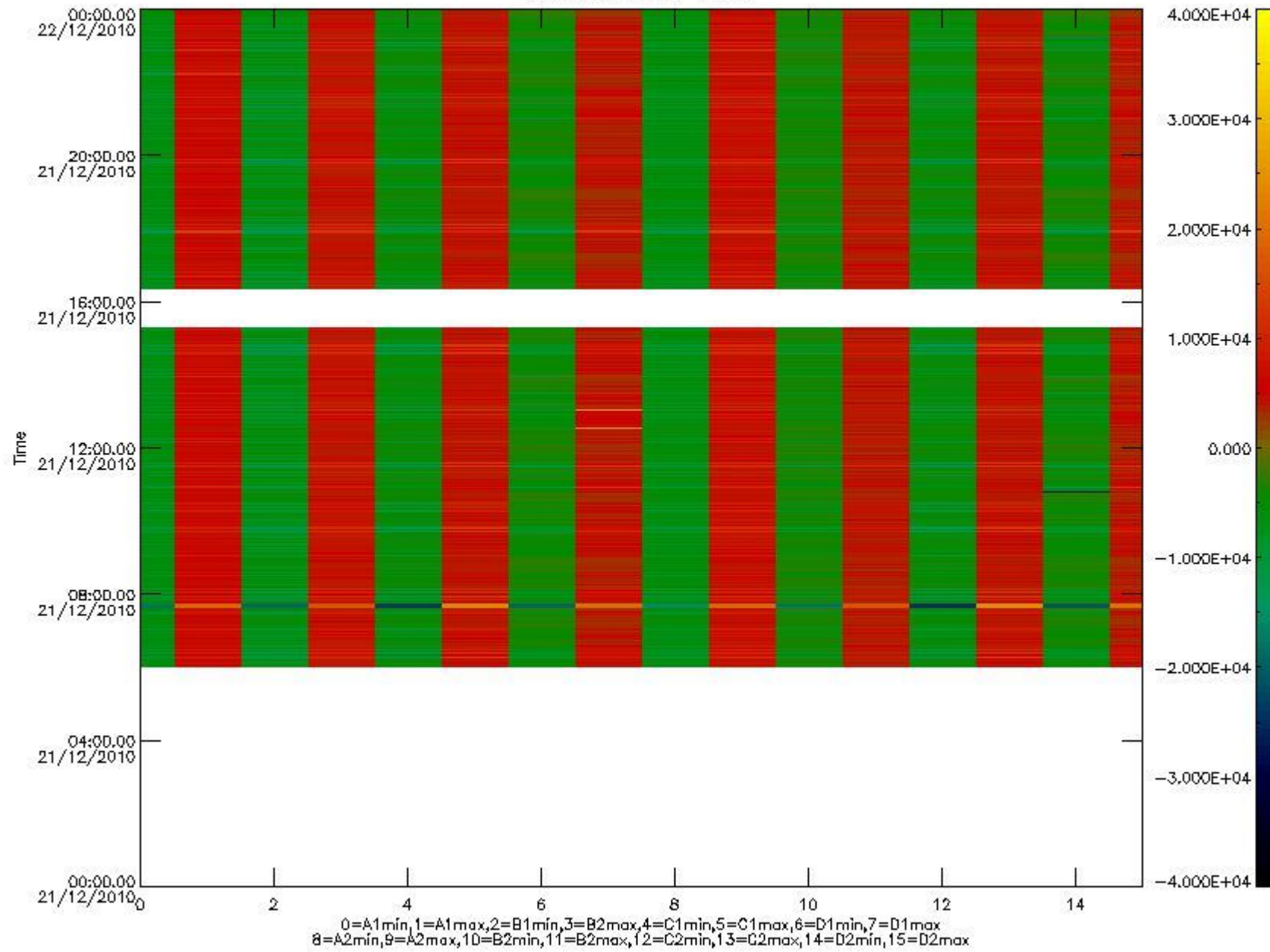


mipas\_daily\_report\_level0\_KSPT\_L0\_4504\_N\_20101221\_10.PNG

The following table shows channel statistics for all channels for this day.

Channel	Min	Max	ADC
A1	-32768	32767	16bit
B1	-32768	32767	16bit
C1	-23996	23813	16bit
D1	-32768	32767	16bit
A2	-32768	28260	16bit
B2	-32768	32767	16bit
C2	-24994	24501	16bit
D2	-32768	32767	16bit

MIPNLOP\_MIPSOUPAC\_aux\_fields\_igm\_cal, channel statistics plot  
Colour indicates value.



mipas\_daily\_report\_level0\_KSPT\_L0\_4504\_N\_20101221\_11.PNG

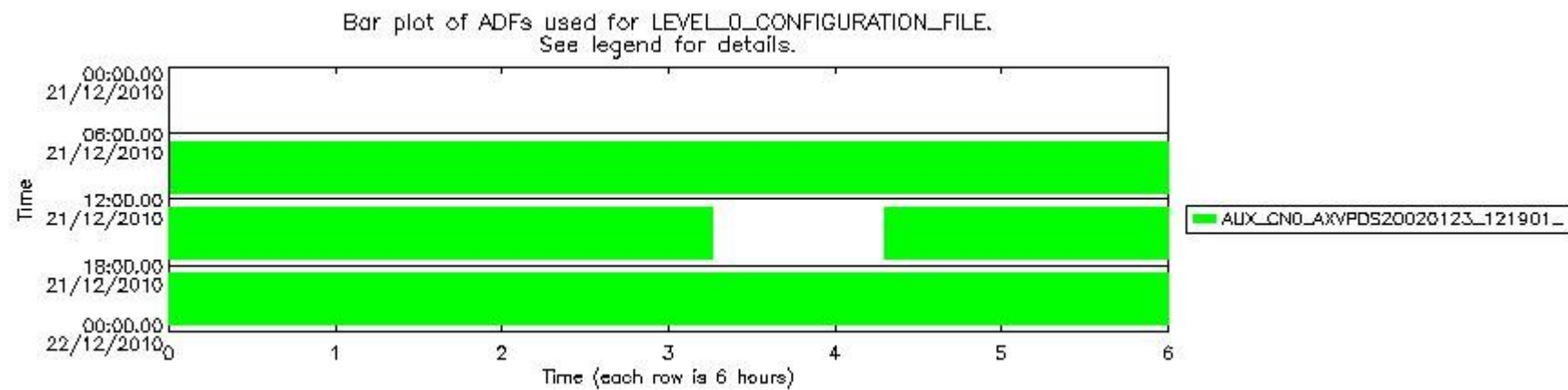
### 0.3 ADF monitoring

The use of ADFs is shown in two ways:

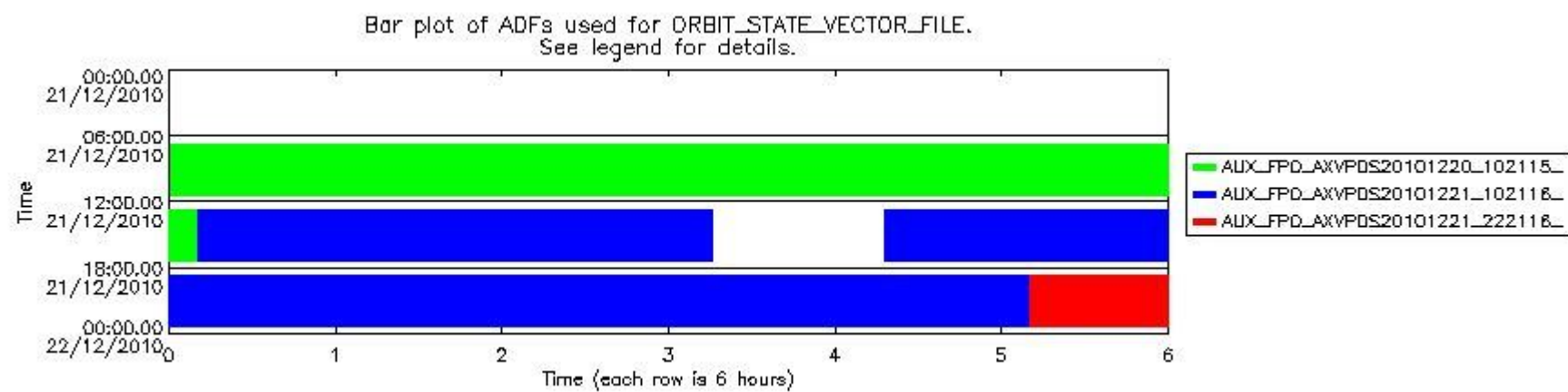
1. By means of two tables that can be used to find the ADF used for a specific product.
2. By means of plots that show changes in ADF using colours.

Number	ADF
0	AUX_CN0_AXVPDS20020123_121901_20020101_000000_20200101_000000
1	AUX_FPO_AXVPDS20101220_102115_20101219_193524_20101229_200904
2	AUX_FPO_AXVPDS20101221_102116_20101220_185841_20101230_211234
3	AUX_FPO_AXVPDS20101221_222116_20101221_182157_20101231_203551

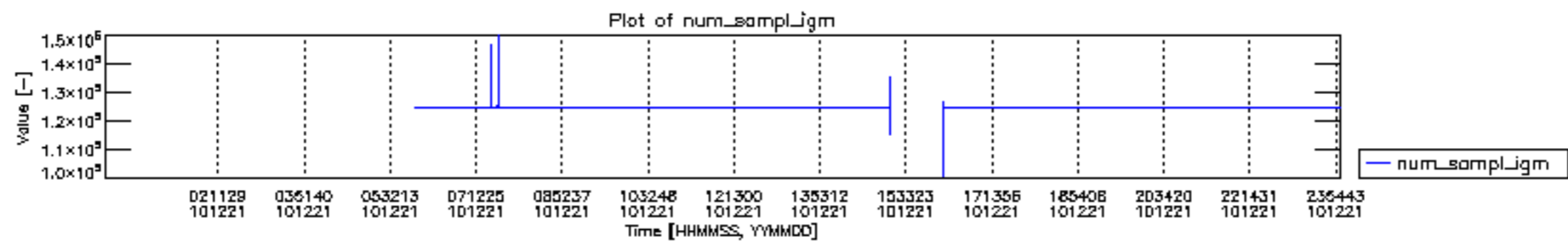
Number	Product name	#CNO	#FPO
0	MIP_NL__0PNPDK20101221_060031_000041683097_00350_46054_3738.N1	0	1
1	MIP_NL__0PNPDK20101221_070829_000060393097_00351_46055_3739.N1	0	1
2	MIP_NL__0PNPDK20101221_084757_000061043097_00352_46056_3740.N1	0	1
3	MIP_NL__0PNPDK20101221_102803_000060923097_00353_46057_3741.N1	0	1
4	MIP_NL__0PNPDK20101221_120754_000059123097_00354_46058_3742.N1	0	2
5	MIP_NL__0PNPDK20101221_134528_000054253097_00355_46059_3743.N1	0	2
6	MIP_NL__0PNPDK20101221_161737_000027343097_00356_46060_3744.N1	0	2
7	MIP_NL__0PNPDK20101221_170127_000058833097_00357_46061_3745.N1	0	2
8	MIP_NL__0PNPDK20101221_183825_000060273097_00358_46062_3746.N1	0	2
9	MIP_NL__0PNPDE20101221_201702_000044083097_00359_46063_2545.N1	0	2
10	MIP_NL__0PNPDE20101221_212931_000061213097_00359_46063_2546.N1	0	2
11	MIP_NL__0PNPDE20101221_231029_000060983097_00360_46064_2547.N1	0	3

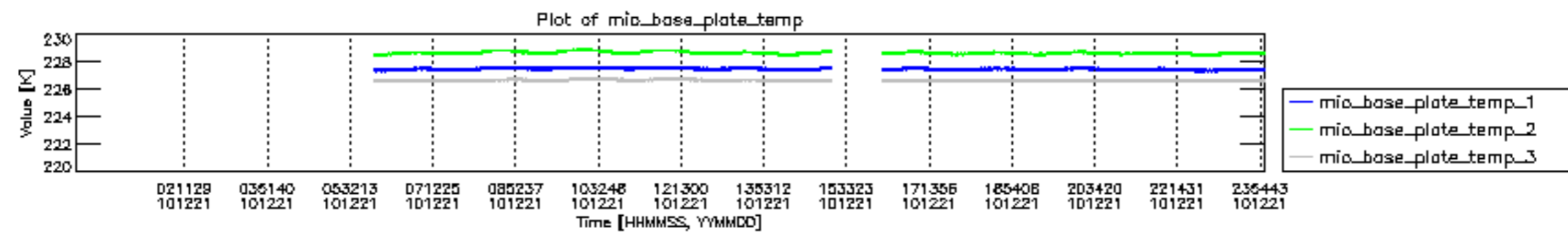


mipas\_daily\_report\_level0\_KSPT\_L0\_4504\_N\_20101221\_12.PNG

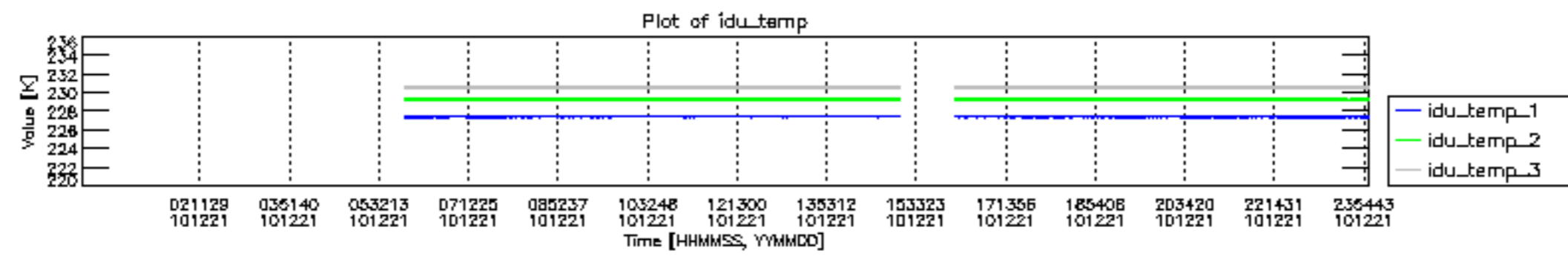


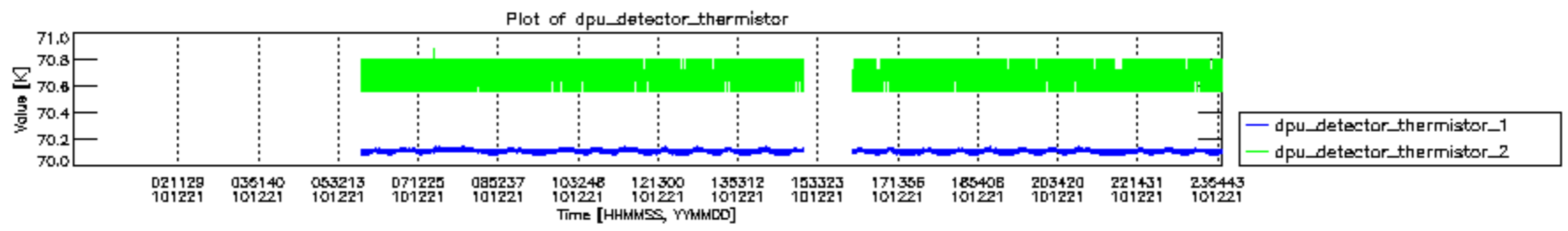
mipas\_daily\_report\_level0\_KSPT\_L0\_4504\_N\_20101221\_13.PNG

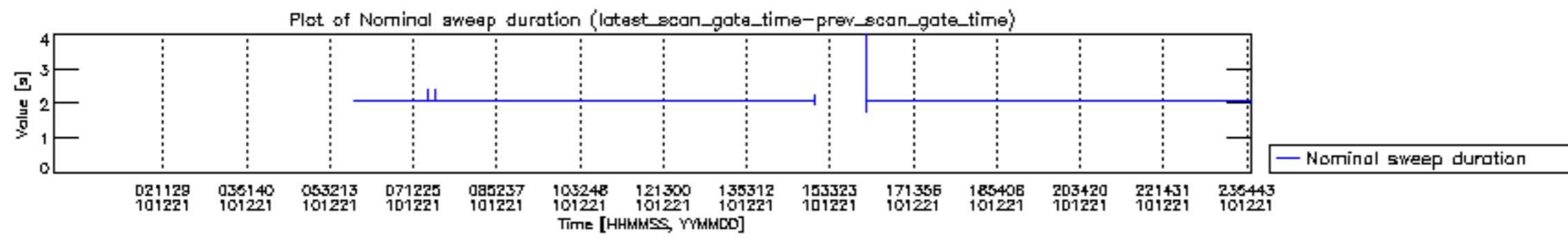


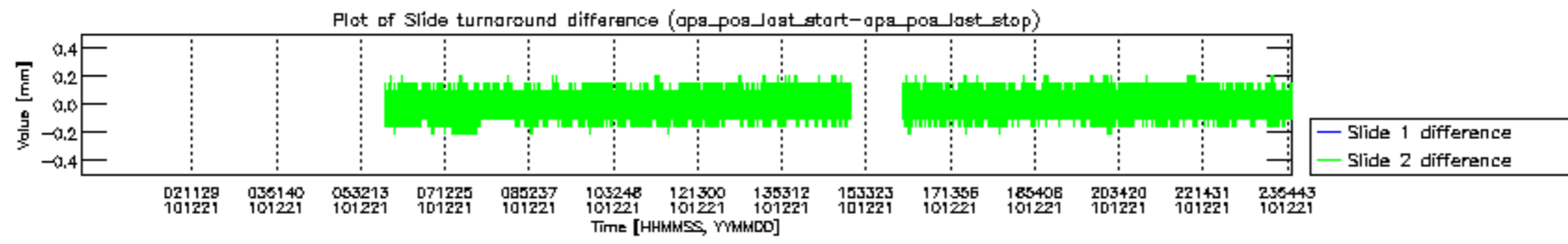


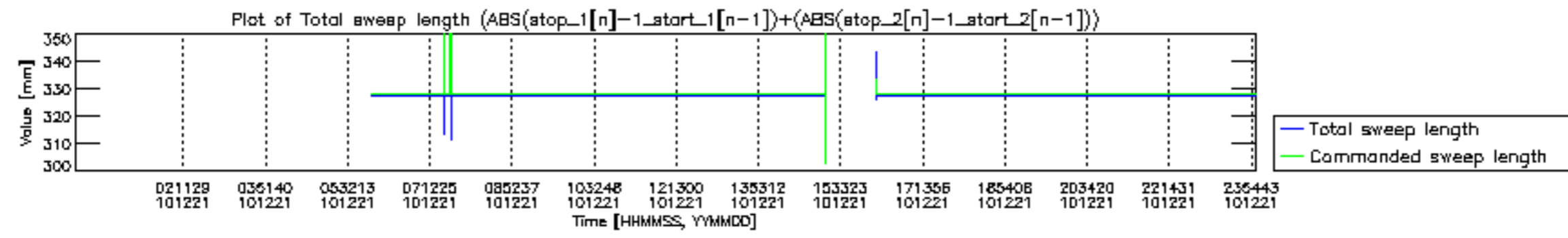


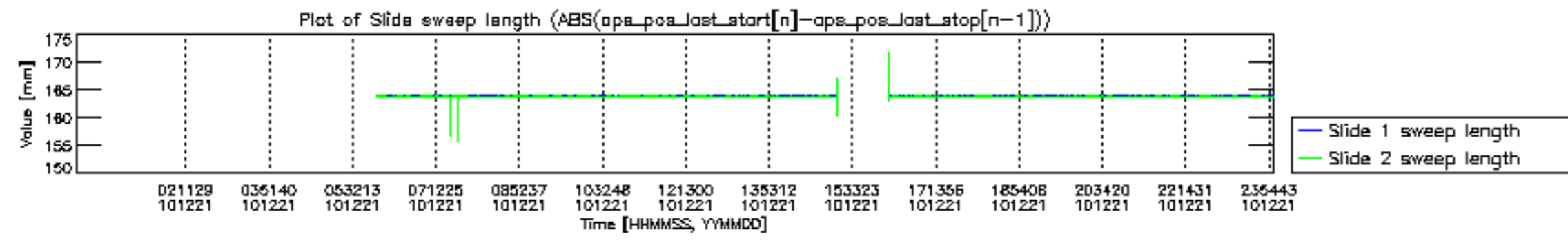


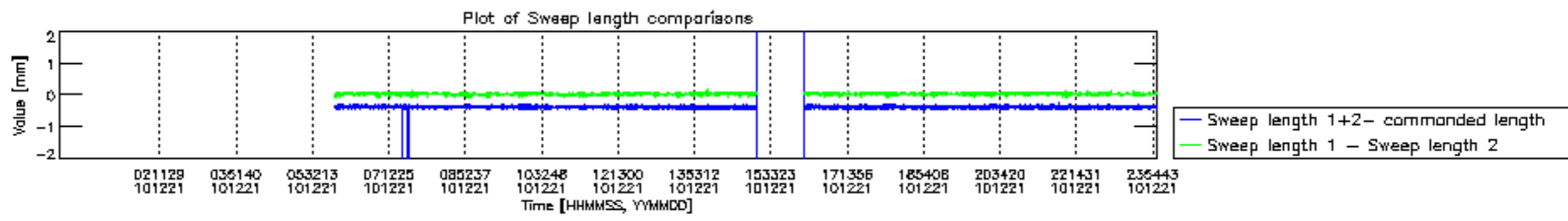


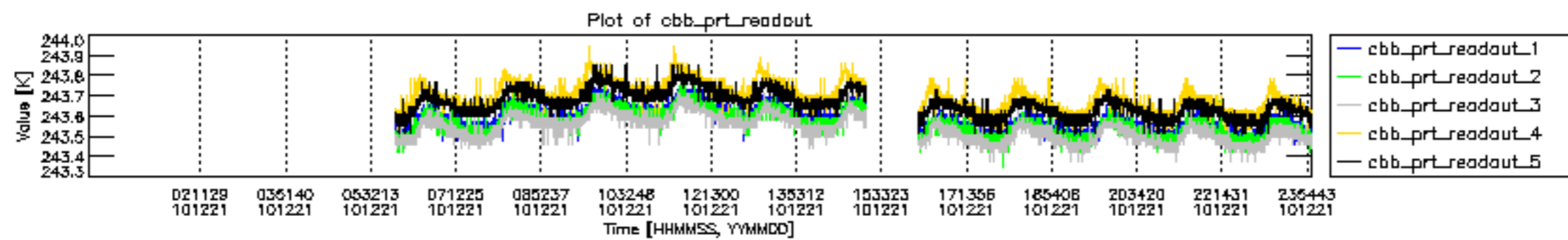




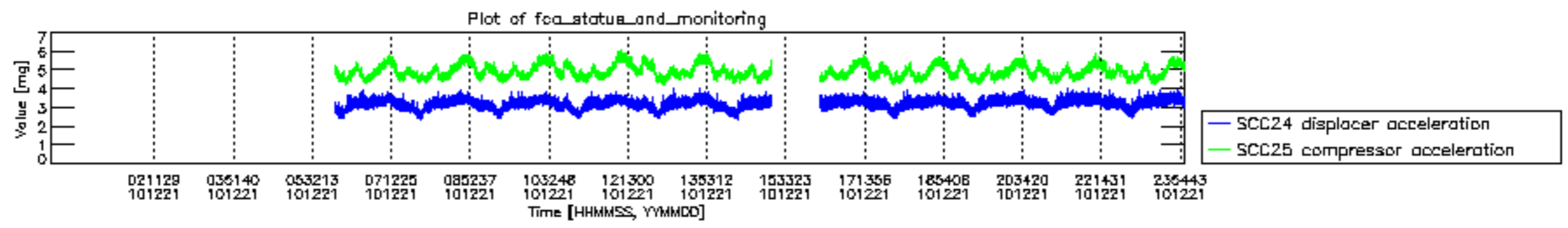




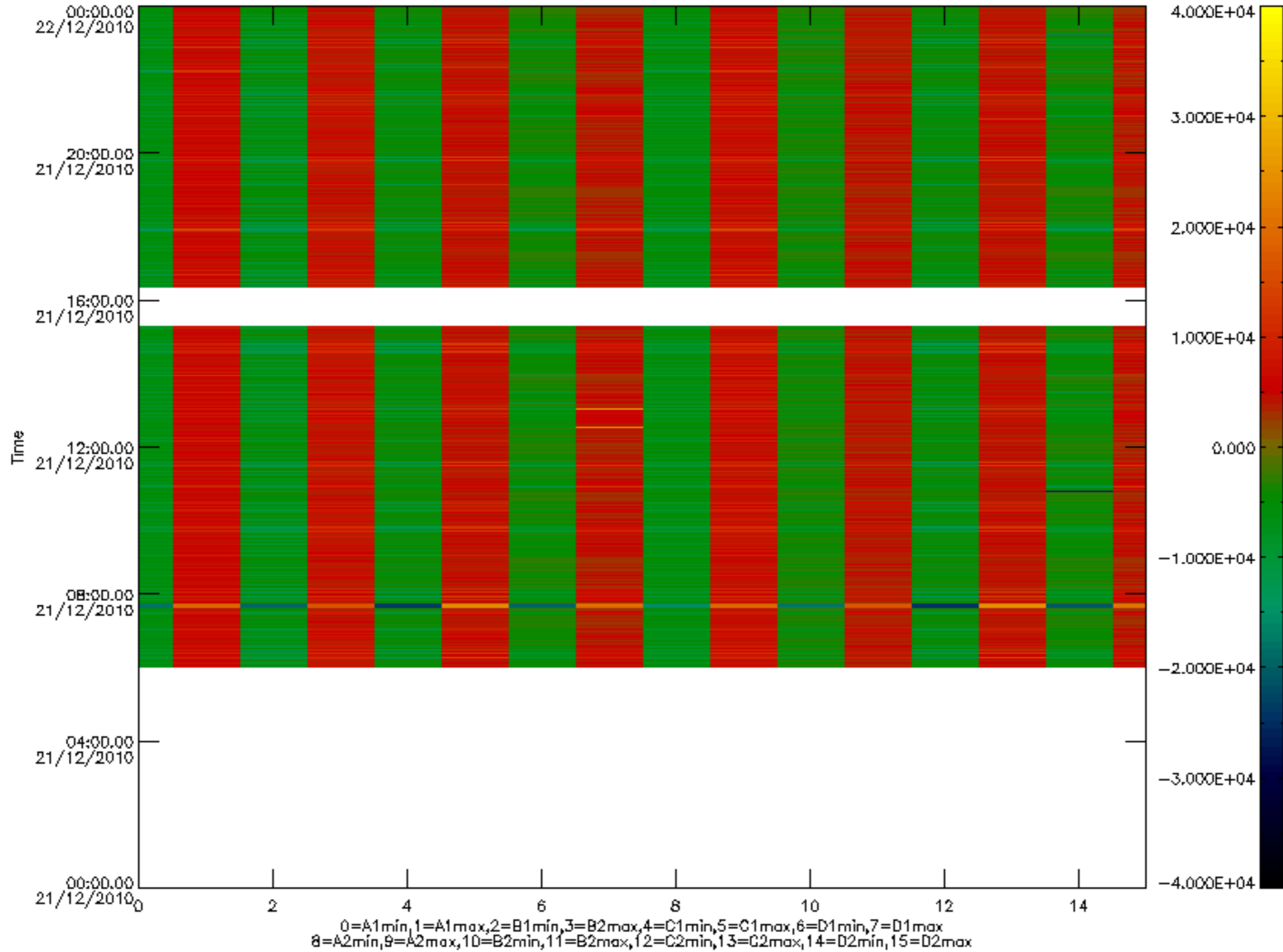


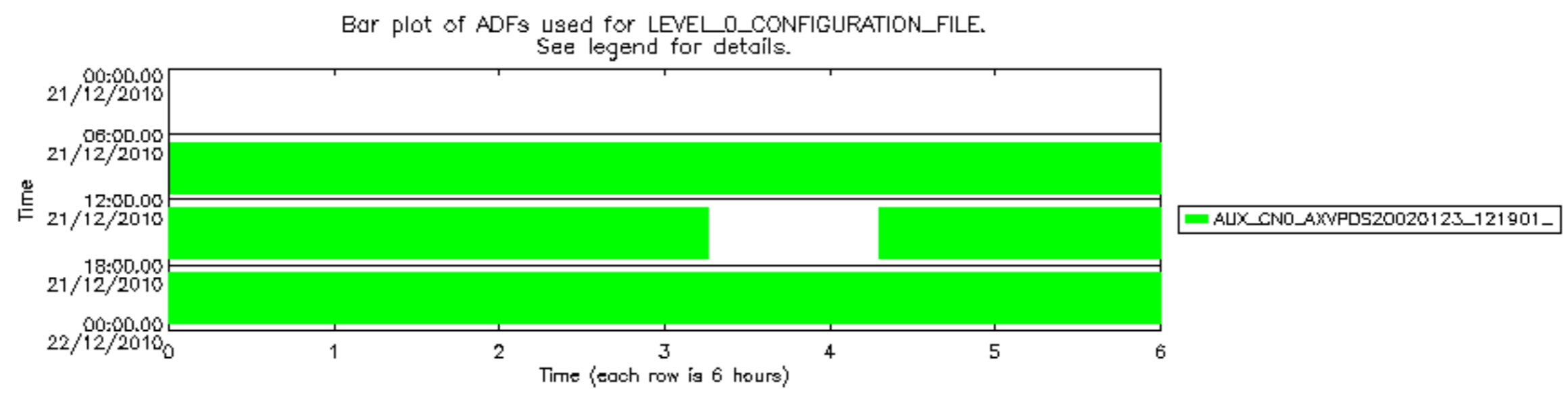






MIPNLOP\_MIPSOUPAC\_aux\_fields\_igm\_cal, channel statistics plot  
 Colour indicates value.





Bar plot of ADFs used for ORBIT\_STATE\_VECTOR\_FILE.  
See legend for details.

