

## 0. MIPAS Daily Report for level 0 products

### [0.1 General Info](#)

### [0.2 Instrument Operational Performance Parameters](#)

### [0.3 ADF monitoring](#)

## 0.1 General Info

This report contains a daily analysis on parameters extracted from MIPAS level 0 data (The MIP\_NL\_\_0P product).

### 0.1.1 Report summary

The table below shows general characteristics of the data that are included into this report.

Item	Value
Report version	v1.6 08-11-2010
Time of report generation	21DEC2010 05:34:10
Data source version	KSPT_L0/4504-N
Processing scope for products	16DEC2010 00:00:00 to 17DEC2010 00:00:00
Start time of first product within scope	16DEC2010 01:10:24
Stop time of last product within scope	17DEC2010 00:35:24
Total number of level 0 products	14
Number of level 0 products with errors	0

### 0.1.2 Product Quality Indicators per product

The following table shows a summary for each product used in this report.

#	Product name	Start time	Stop time	Prod err	ISP err sign	ISP miss sign	ISP disc sign	rs sign
0	MIP_NL__0PNPDE20101216_011024_000103043097_00275_45979_2508.N1	16DEC2010 01:10:24	16DEC2010 04:02:08	0	0	0	0	0
1	MIP_NL__0PNPDE20101216_040134_000062133097_00277_45981_2509.N1	16DEC2010 04:01:34	16DEC2010 05:45:07	0	0	0	0	0
2	MIP_NL__0PNPDE20101216_054436_000061243097_00278_45982_2510.N1	16DEC2010 05:44:36	16DEC2010 07:26:40	0	0	0	0	0
3	MIP_NL__0PNPDK20101216_072606_000039423097_00279_45983_3696.N1	16DEC2010 07:26:06	16DEC2010 08:31:49	0	0	0	0	0
4	MIP_NL__0PNPDK20101216_083050_000060193097_00280_45984_3697.N1	16DEC2010 08:30:50	16DEC2010 10:11:09	0	0	0	0	0
5	MIP_NL__0PNPDK20101216_100935_000060193097_00281_45985_3698.N1	16DEC2010 10:09:35	16DEC2010 11:49:53	0	0	0	0	0
6	MIP_NL__0PNPDK20101216_114817_000061253097_00282_45986_3699.N1	16DEC2010 11:48:17	16DEC2010 13:30:22	0	0	0	0	0
7	MIP_NL__0PNPDK20101216_132928_000059753097_00283_45987_3700.N1	16DEC2010 13:29:28	16DEC2010 15:09:03	0	0	0	0	0
8	MIP_NL__0PNPDK20101216_150819_000058583097_00284_45988_3701.N1	16DEC2010 15:08:19	16DEC2010 16:45:57	0	0	0	0	0
9	MIP_NL__0PNPDK20101216_164412_000059503097_00285_45989_3702.N1	16DEC2010 16:44:12	16DEC2010 18:23:22	0	0	0	0	0
10	MIP_NL__0PNPDK20101216_182136_000059273097_00286_45990_3703.N1	16DEC2010 18:21:36	16DEC2010 20:00:22	0	0	0	0	0
11	MIP_NL__0PNPDE20101216_195903_000042243097_00287_45991_2511.N1	16DEC2010 19:59:03	16DEC2010 21:09:27	0	0	0	0	0
12	MIP_NL__0PNPDE20101216_210831_000064573097_00287_45991_2512.N1	16DEC2010 21:08:31	16DEC2010 22:56:08	0	0	0	0	0
13	MIP_NL__0PNPDE20101216_225501_000060233097_00288_45992_2513.N1	16DEC2010 22:55:01	17DEC2010 00:35:24	0	0	0	0	0

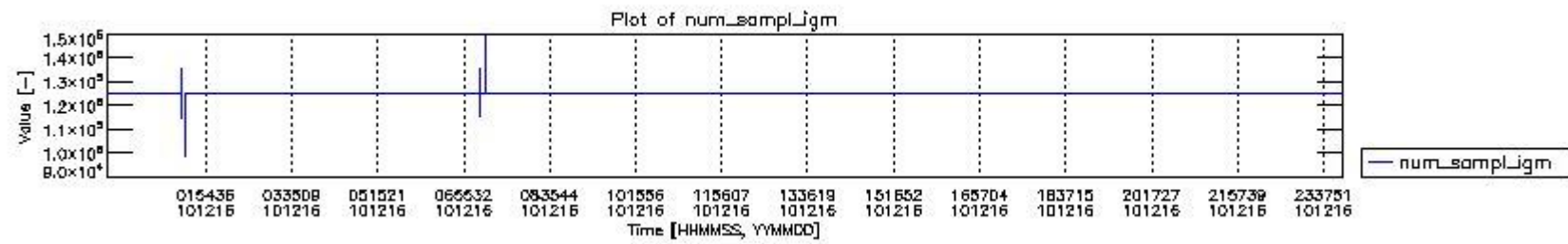
## 0.2 Instrument Operational Performance Parameters

The following plots give an overview of various instrument parameters for this day. The instrument parameters are part of the auxiliary data field within the source packets of the MIP\_NL\_\_0P product. The auxiliary data is normally included twice per interferogram. Note that only the first packet is currently included in monitoring.

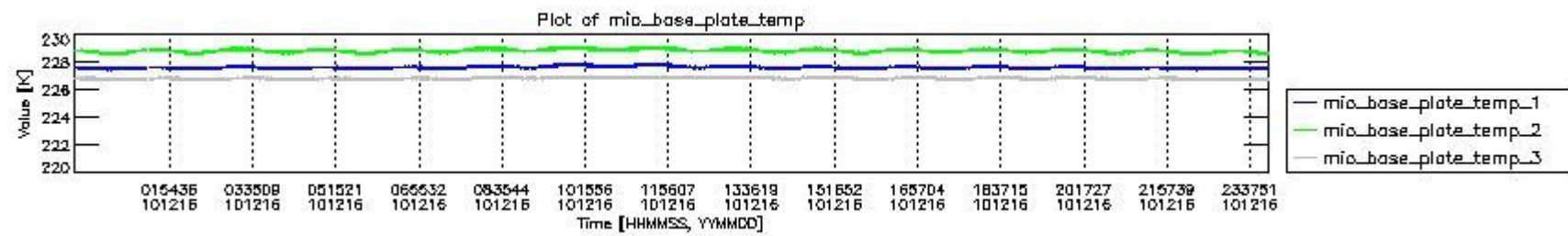
The following table shows the counts of various interferogram number of samples

Number of igm samples	Count [#]	Count [%]
98773	1	0.0024097547
115116	1	0.0024097547
115636	1	0.0024097547
123250	1	0.0024097547

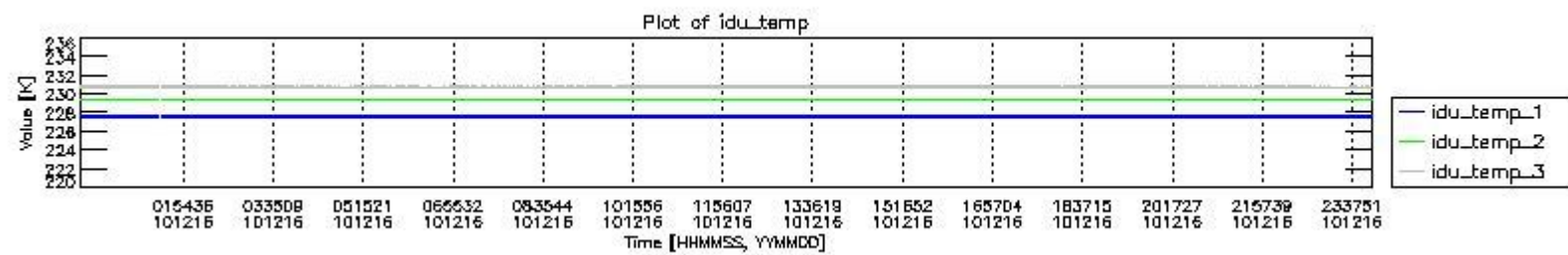
124025	1	0.0024097547
124800	38577	92.961107
124803	2909	7.0099764
125564	1	0.0024097547
126604	1	0.0024097547
127308	1	0.0024097547
135248	1	0.0024097547
135768	1	0.0024097547
147440	1	0.0024097547
149948	1	0.0024097547



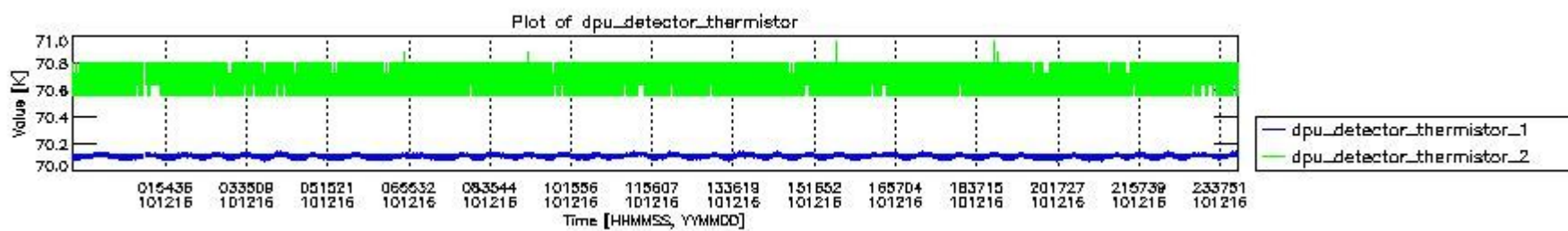
mipas\_daily\_report\_level0\_KSPT\_L0\_4504\_N\_20101216\_0.PNG



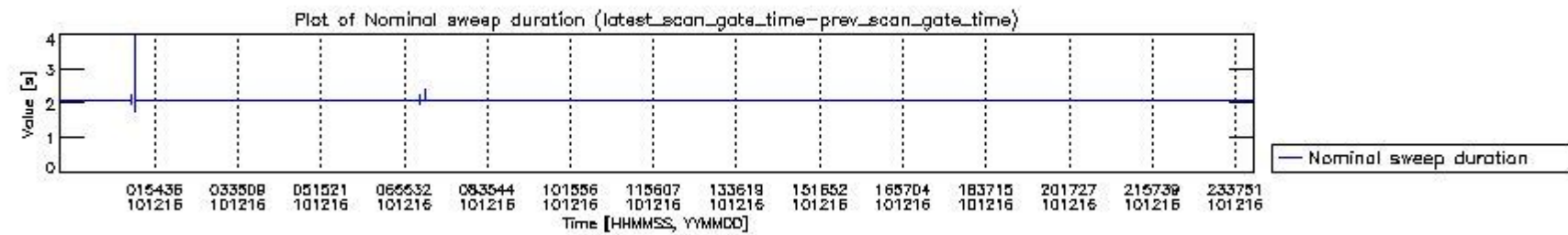
mipas\_daily\_report\_level0\_KSPT\_L0\_4504\_N\_20101216\_1.PNG



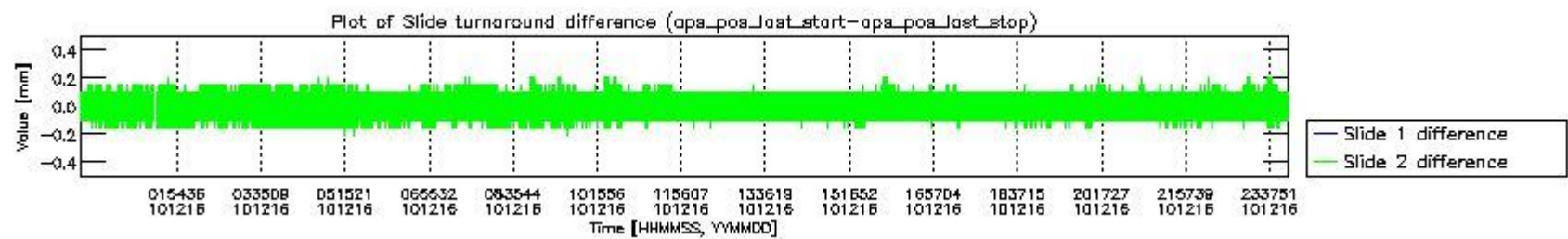
mipas\_daily\_report\_level0\_KSPT\_L0\_4504\_N\_20101216\_2.PNG



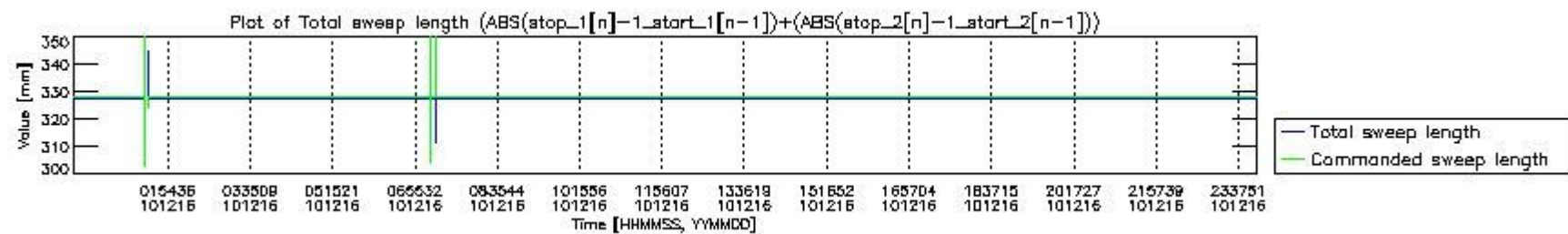
mipas\_daily\_report\_level0\_KSPT\_L0\_4504\_N\_20101216\_3.PNG



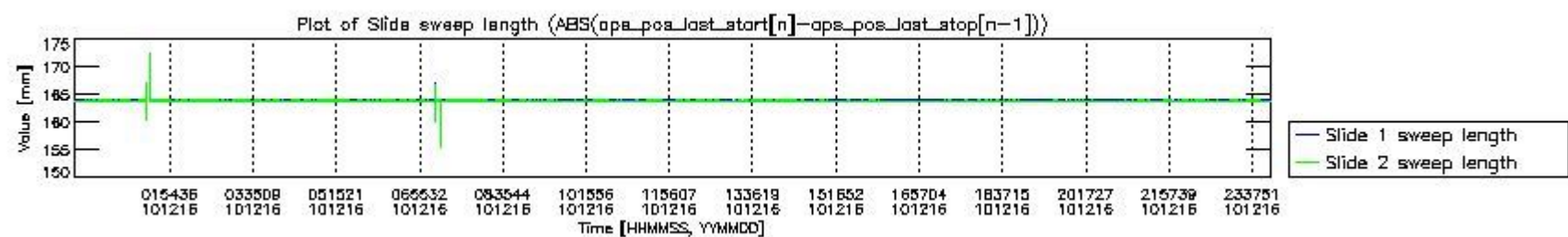
mipas\_daily\_report\_level0\_KSPT\_L0\_4504\_N\_20101216\_4.PNG



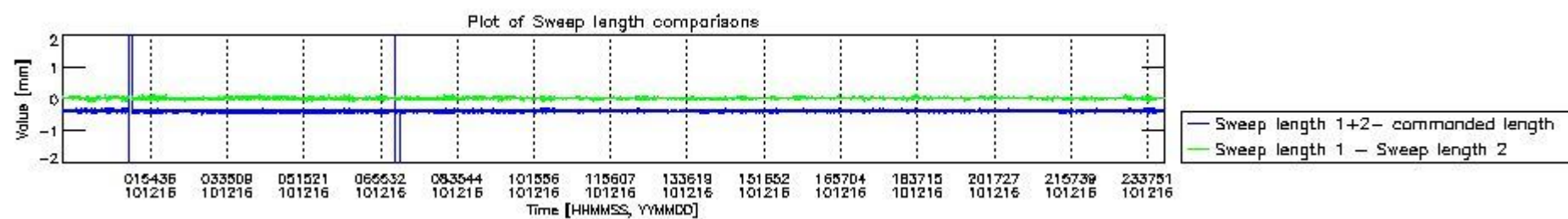
mipas\_daily\_report\_level0\_KSPT\_L0\_4504\_N\_20101216\_5.PNG



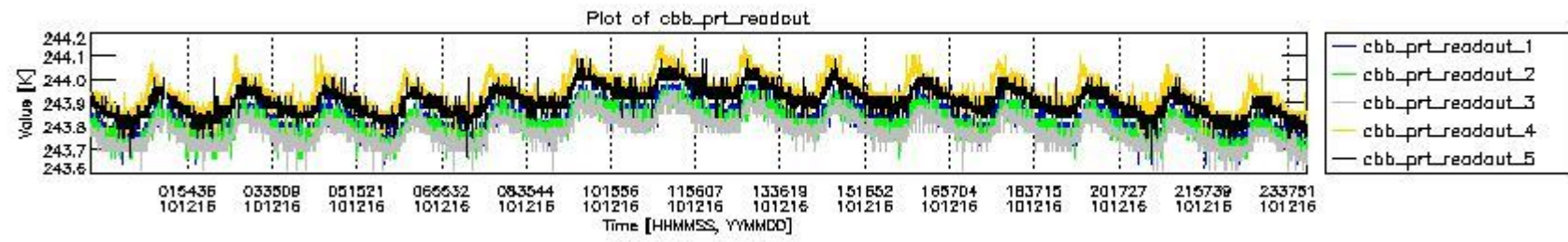
mipas\_daily\_report\_level0\_KSPT\_L0\_4504\_N\_20101216\_6.PNG



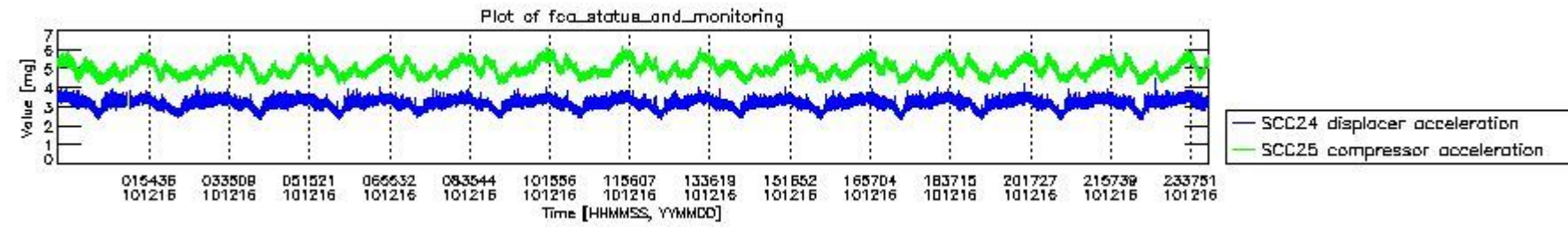
mipas\_daily\_report\_level0\_KSPT\_L0\_4504\_N\_20101216\_7.PNG



mipas\_daily\_report\_level0\_KSPT\_L0\_4504\_N\_20101216\_8.PNG



mipas\_daily\_report\_level0\_KSPT\_L0\_4504\_N\_20101216\_9.PNG



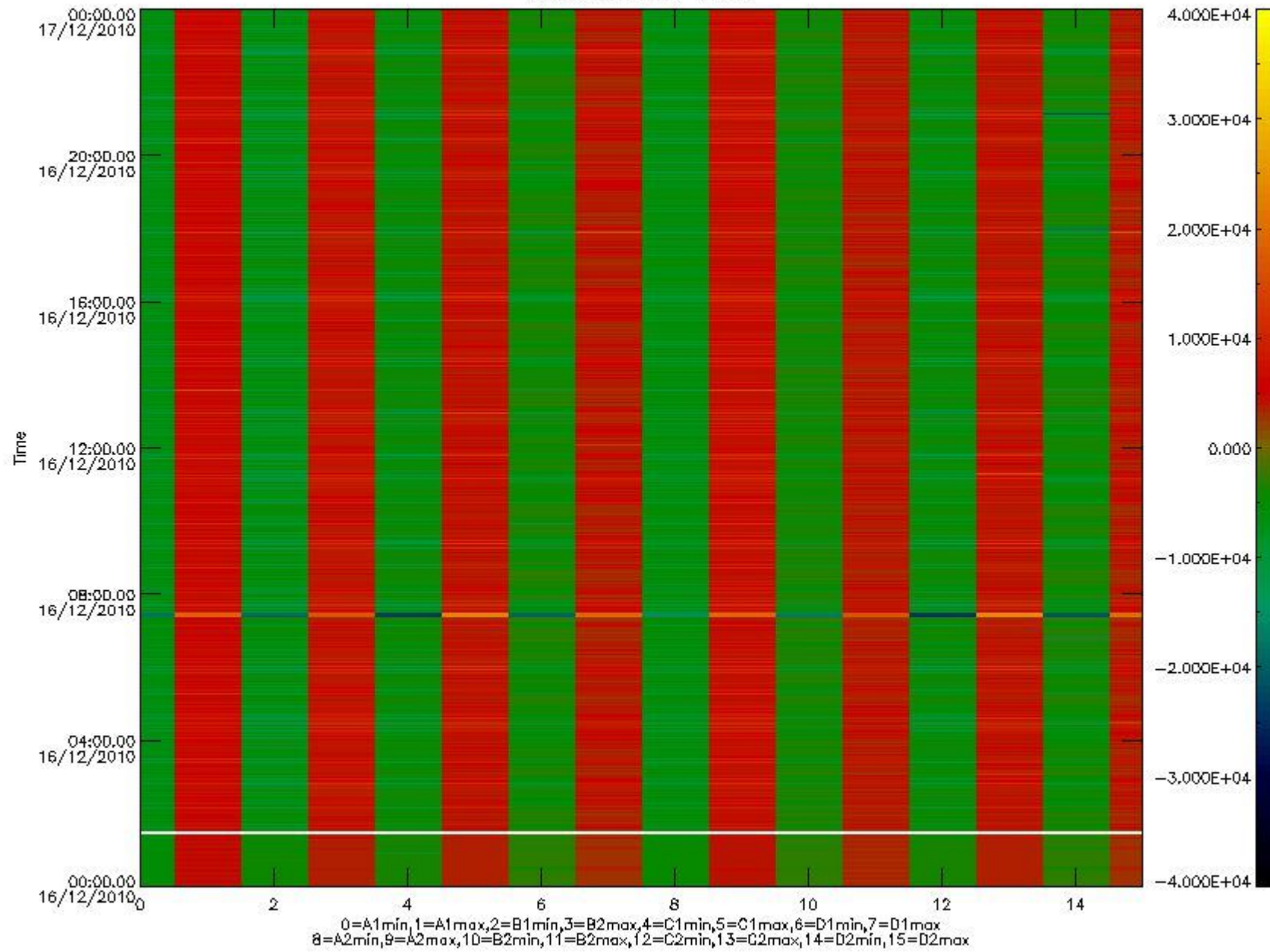
mipas\_daily\_report\_level0\_KSPT\_L0\_4504\_N\_20101216\_10.PNG

The following table shows channel statistics for all channels for this day.

Channel	Min	Max	ADC
A1	-18249	19358	16bit
B1	-20095	17327	16bit
C1	-24569	24089	16bit
D1	-32768	32767	16bit
A2	-15783	19515	16bit
B2	-18180	17814	16bit
C2	-25072	24783	16bit
D2	-32768	32767	16bit



MIPNLOP\_MIPSOUPAC\_aux\_fields\_igm\_cal, channel statistics plot  
Colour indicates value.



mipas\_daily\_report\_level0\_KSPT\_L0\_4504\_N\_20101216\_11.PNG

### 0.3 ADF monitoring

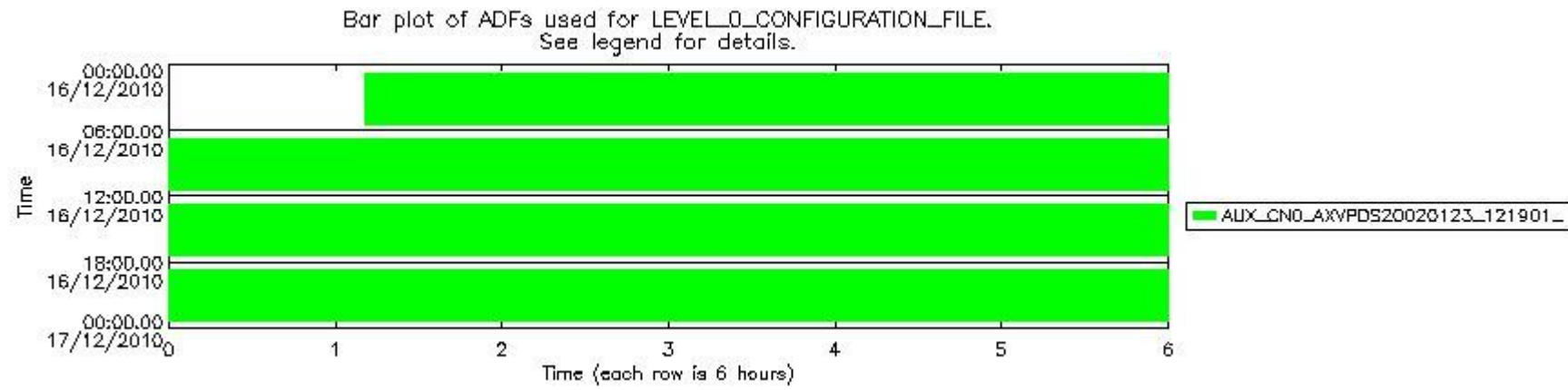
The use of ADFs is shown in two ways:

1. By means of two tables that can be used to find the ADF used for a specific product.
2. By means of plots that show changes in ADF using colours.

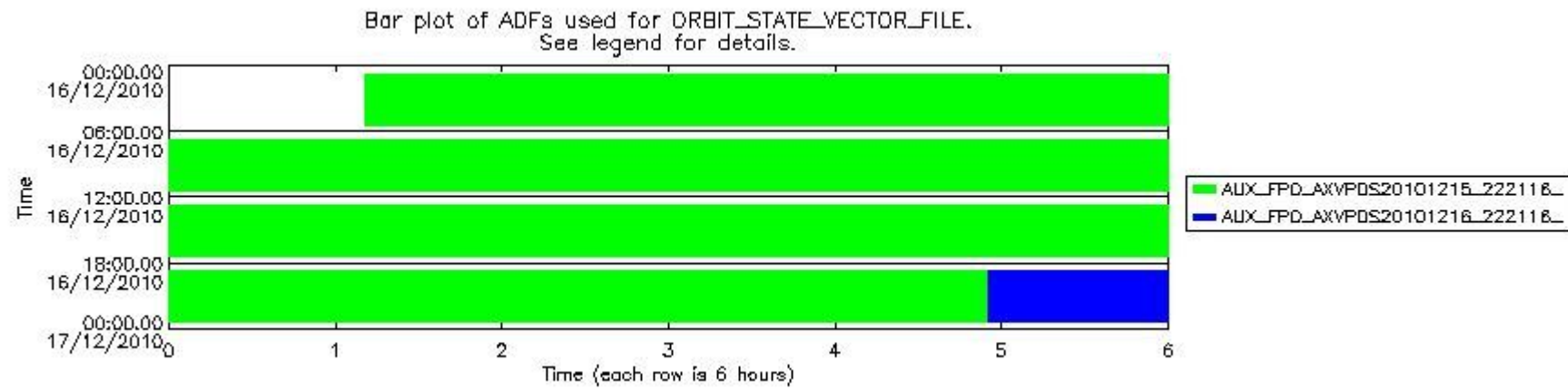
Number	ADF
0	AUX_CN0_AXVPDS20020123_121901_20020101_000000_20200101_000000
1	AUX_FPO_AXVPDS20101215_222116_20101214_191834_20101224_213228
2	AUX_FPO_AXVPDS20101216_222116_20101216_112411_20101226_133805

Number	Product name	#CN0	#FPO
--------	--------------	------	------

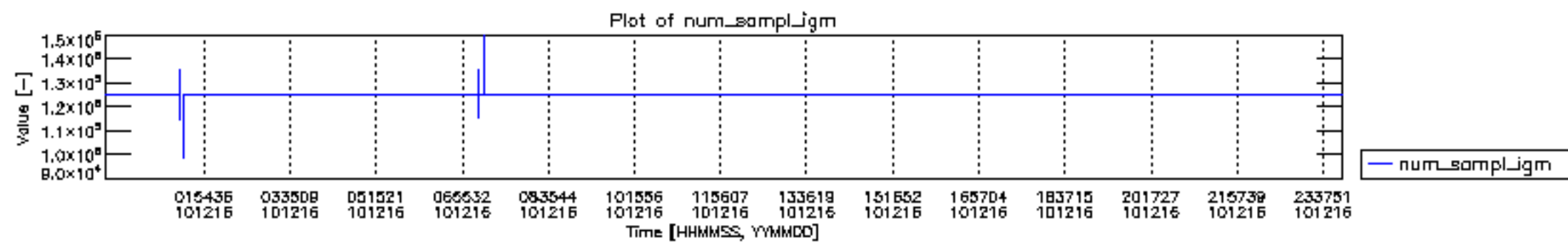
0	MIP_NL__0PNPDE20101216_011024_000103043097_00275_45979_2508.N1	0	1
1	MIP_NL__0PNPDE20101216_040134_000062133097_00277_45981_2509.N1	0	1
2	MIP_NL__0PNPDE20101216_054436_000061243097_00278_45982_2510.N1	0	1
3	MIP_NL__0PNPDK20101216_072606_000039423097_00279_45983_3696.N1	0	1
4	MIP_NL__0PNPDK20101216_083050_000060193097_00280_45984_3697.N1	0	1
5	MIP_NL__0PNPDK20101216_100935_000060193097_00281_45985_3698.N1	0	1
6	MIP_NL__0PNPDK20101216_114817_000061253097_00282_45986_3699.N1	0	1
7	MIP_NL__0PNPDK20101216_132928_000059753097_00283_45987_3700.N1	0	1
8	MIP_NL__0PNPDK20101216_150819_000058583097_00284_45988_3701.N1	0	1
9	MIP_NL__0PNPDK20101216_164412_000059503097_00285_45989_3702.N1	0	1
10	MIP_NL__0PNPDK20101216_182136_000059273097_00286_45990_3703.N1	0	1
11	MIP_NL__0PNPDE20101216_195903_000042243097_00287_45991_2511.N1	0	1
12	MIP_NL__0PNPDE20101216_210831_000064573097_00287_45991_2512.N1	0	1
13	MIP_NL__0PNPDE20101216_225501_000060233097_00288_45992_2513.N1	0	2

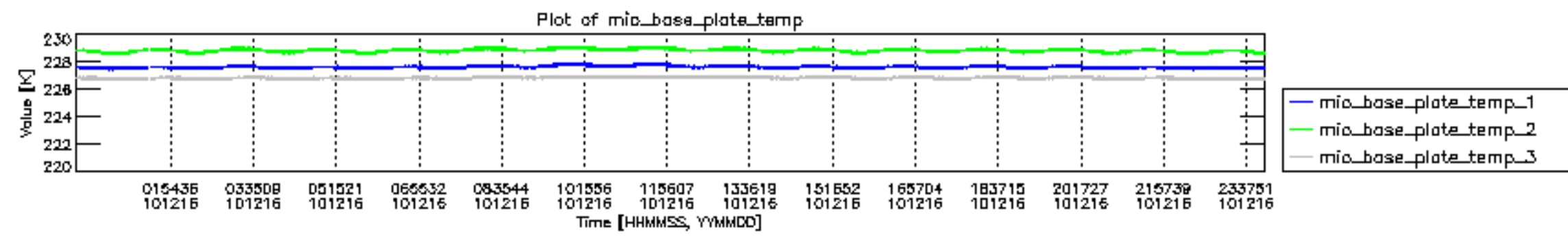


mipas\_daily\_report\_level0\_KSPT\_L0\_4504\_N\_20101216\_12.PNG

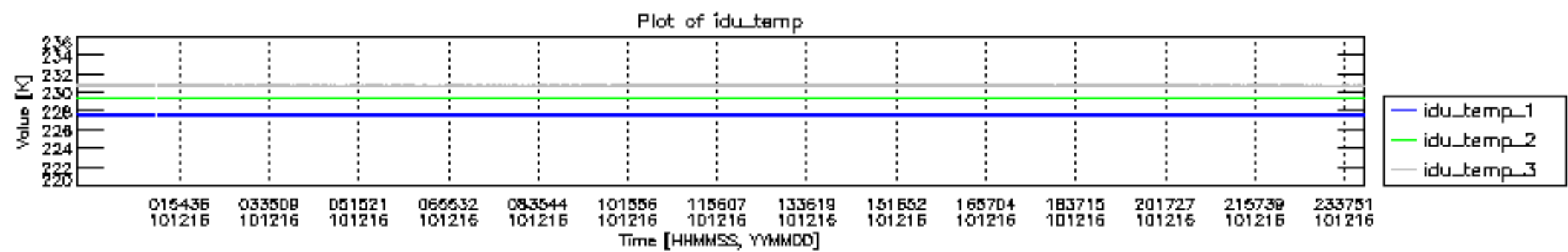


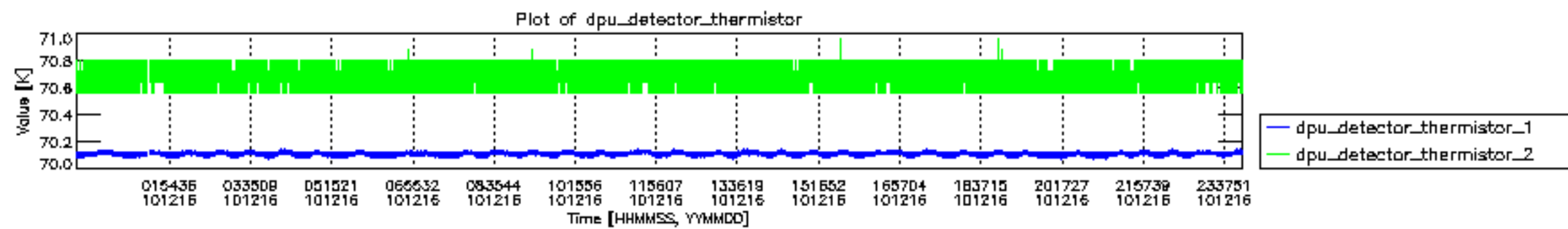
mipas\_daily\_report\_level0\_KSPT\_L0\_4504\_N\_20101216\_13.PNG

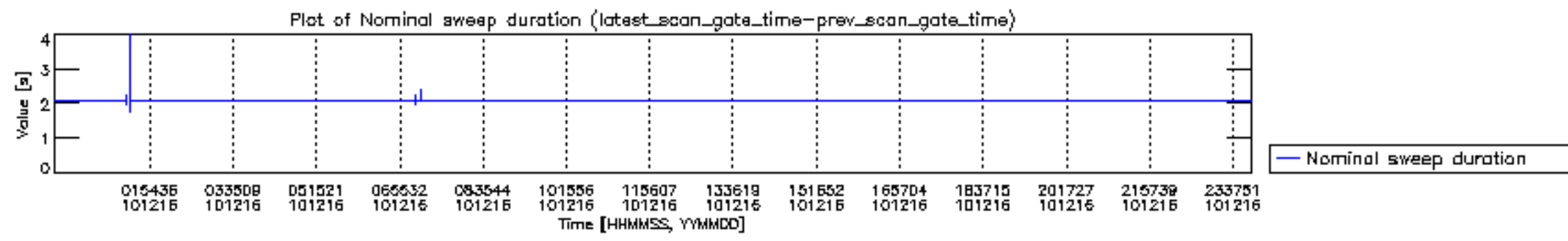


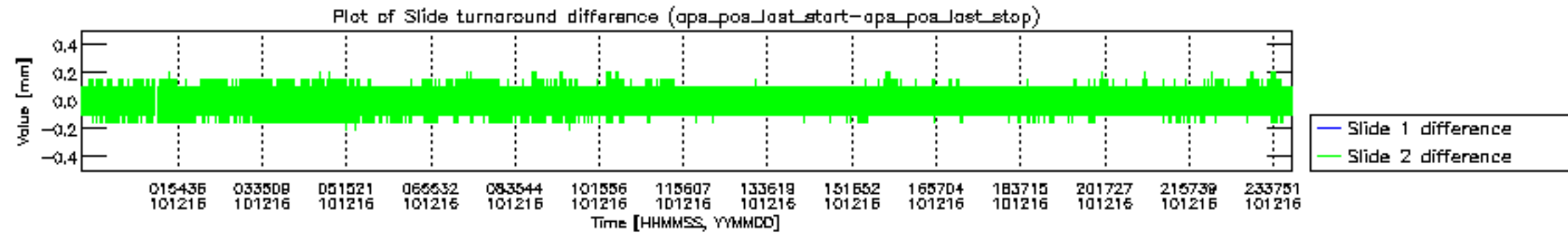


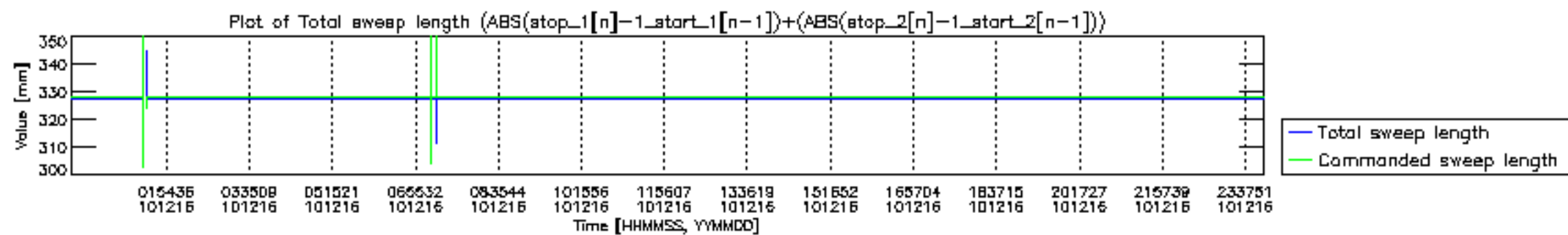




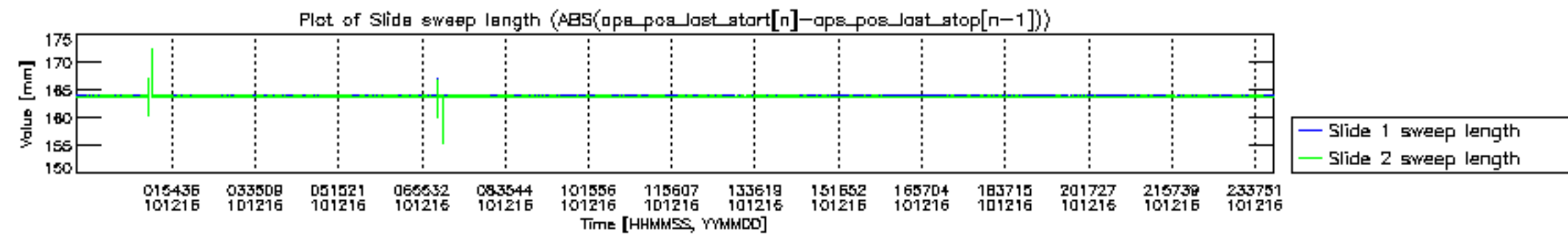


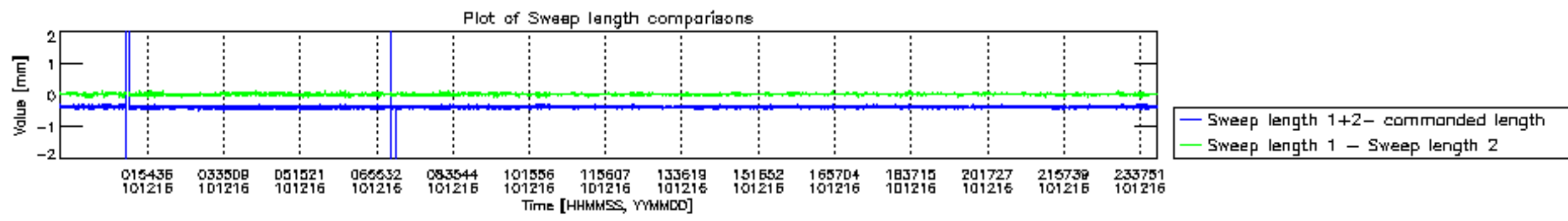


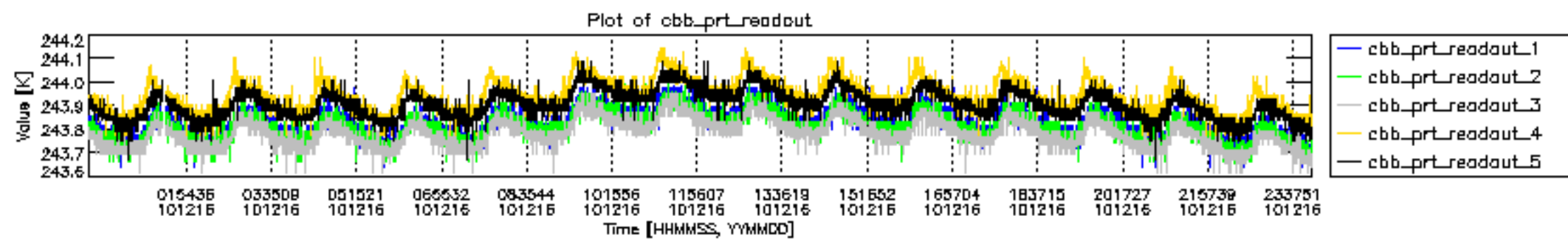


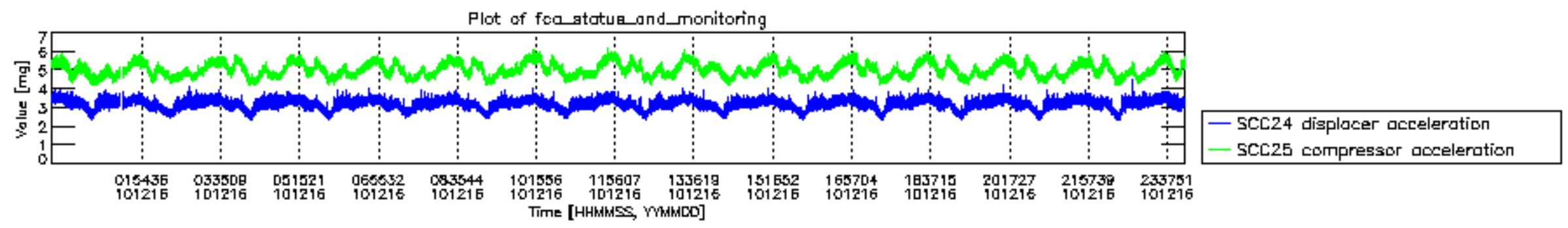












MIPNLOP\_MIPSOUPAC\_aux\_fields\_igm\_cal, channel statistics plot  
 Colour indicates value.

