

## 0. MIPAS Daily Report for level 0 products

### [0.1 General Info](#)

### [0.2 Instrument Operational Performance Parameters](#)

### [0.3 ADF monitoring](#)

## 0.1 General Info

This report contains a daily analysis on parameters extracted from MIPAS level 0 data (The MIP\_NL\_\_0P product).

### 0.1.1 Report summary

The table below shows general characteristics of the data that are included into this report.

Item	Value
Report version	v1.6 08-11-2010
Time of report generation	15DEC2010 05:24:12
Data source version	KSPT_L0/4504-N
Processing scope for products	10DEC2010 00:00:00 to 11DEC2010 00:00:00
Start time of first product within scope	10DEC2010 01:29:15
Stop time of last product within scope	11DEC2010 00:55:07
Total number of level 0 products	15
Number of level 0 products with errors	0

### 0.1.2 Product Quality Indicators per product

The following table shows a summary for each product used in this report.

#	Product name	Start time	Stop time	Prod err	ISP err sign	ISP miss sign	ISP disc sign	rs sign
0	MIP_NL__0PNPDE20101210_012915_000043753097_00189_45893_2468.N1	10DEC2010 01:29:15	10DEC2010 02:42:10	0	0	0	0	0
1	MIP_NL__0PNPDE20101210_024136_000061823097_00190_45894_2469.N1	10DEC2010 02:41:36	10DEC2010 04:24:38	0	0	0	0	0
2	MIP_NL__0PNPDE20101210_042405_000060673097_00191_45895_2470.N1	10DEC2010 04:24:05	10DEC2010 06:05:11	0	0	0	0	0
3	MIP_NL__0PNPDK20101210_060436_000039803097_00192_45896_3509.N1	10DEC2010 06:04:36	10DEC2010 07:10:55	0	0	0	0	0
4	MIP_NL__0PNPDK20101210_070955_000061493097_00193_45897_3510.N1	10DEC2010 07:09:55	10DEC2010 08:52:24	0	0	0	0	0
5	MIP_NL__0PNPDK20101210_085107_000059713097_00194_45898_3511.N1	10DEC2010 08:51:07	10DEC2010 10:30:37	0	0	0	0	0
6	MIP_NL__0PNPDK20101210_102901_000060523097_00195_45899_3512.N1	10DEC2010 10:29:01	10DEC2010 12:09:53	0	0	0	0	0
7	MIP_NL__0PNPDK20101210_120825_000061423097_00196_45900_3513.N1	10DEC2010 12:08:25	10DEC2010 13:50:47	0	0	0	0	0
8	MIP_NL__0PNPDK20101210_134949_000059203097_00197_45901_3514.N1	10DEC2010 13:49:49	10DEC2010 15:28:29	0	0	0	0	0
9	MIP_NL__0PNPDK20101210_152745_000057803097_00198_45902_3515.N1	10DEC2010 15:27:45	10DEC2010 17:04:06	0	0	0	0	0
10	MIP_NL__0PNPDK20101210_170226_000060373097_00199_45903_3516.N1	10DEC2010 17:02:26	10DEC2010 18:43:03	0	0	0	0	0
11	MIP_NL__0PNPDK20101210_184200_000059813097_00200_45904_3517.N1	10DEC2010 18:42:00	10DEC2010 20:21:41	0	0	0	0	0
12	MIP_NL__0PNPDE20101210_201946_000044713097_00201_45905_2471.N1	10DEC2010 20:19:46	10DEC2010 21:34:17	0	0	0	0	0
13	MIP_NL__0PNPDE20101210_213320_000061003097_00201_45905_2472.N1	10DEC2010 21:33:20	10DEC2010 23:15:01	0	0	0	0	0
14	MIP_NL__0PNPDE20101210_231354_000060733097_00202_45906_2473.N1	10DEC2010 23:13:54	11DEC2010 00:55:07	0	0	0	0	0

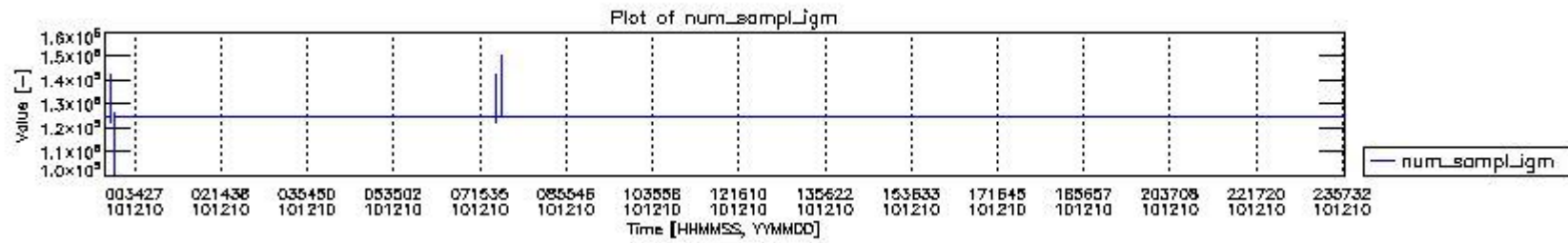
## 0.2 Instrument Operational Performance Parameters

The following plots give an overview of various instrument parameters for this day. The instrument parameters are part of the auxiliary data field within the source packets of the MIP\_NL\_\_0P product. The auxiliary data is normally included twice per interferogram. Note that only the first packet is currently included in monitoring.

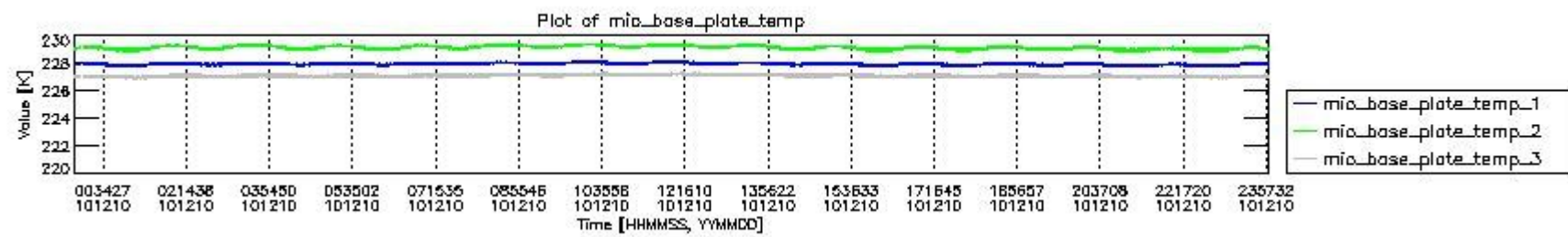
The following table shows the counts of various interferogram number of samples

Number of igm samples	Count [#]	Count [%]
100409	1	0.0024121379
122252	1	0.0024121379
122401	1	0.0024121379

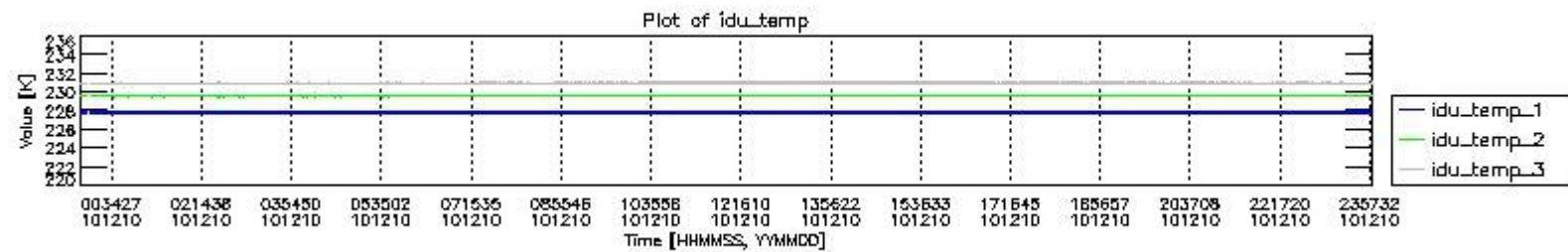
124800	38678	93.296669
124803	2767	6.6743855
125661	1	0.0024121379
126522	1	0.0024121379
127382	1	0.0024121379
139836	1	0.0024121379
140134	1	0.0024121379
142384	1	0.0024121379
142533	1	0.0024121379
147514	1	0.0024121379
150096	1	0.0024121379



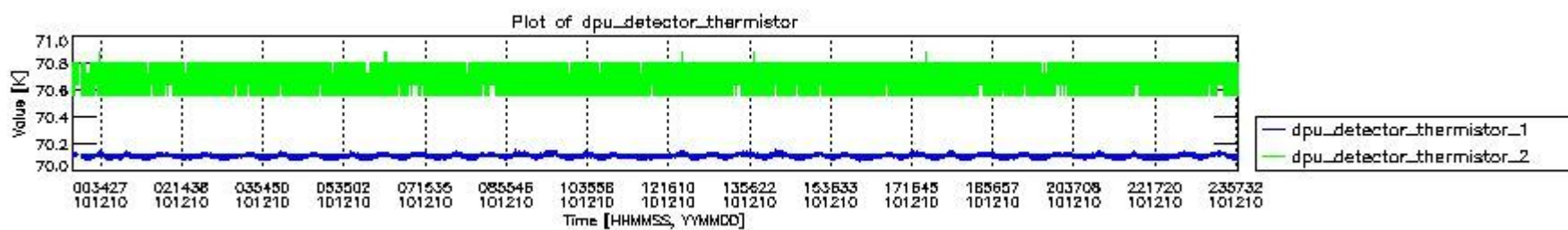
mipas\_daily\_report\_level0\_KSPT\_L0\_4504\_N\_20101210\_0.PNG



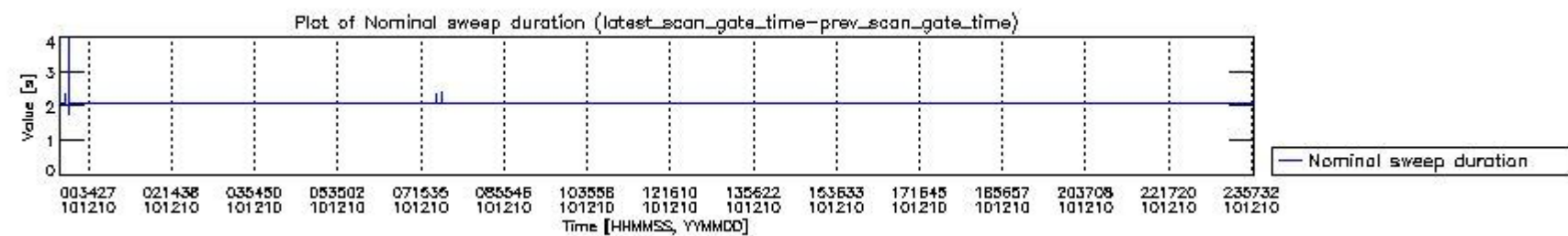
mipas\_daily\_report\_level0\_KSPT\_L0\_4504\_N\_20101210\_1.PNG



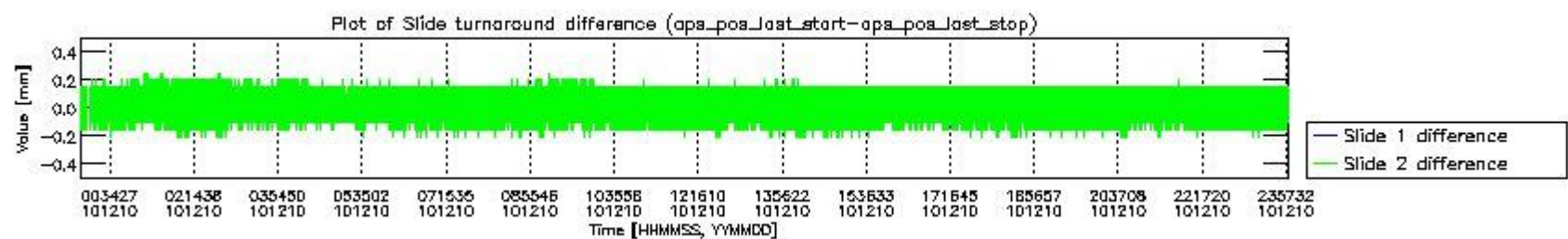
mipas\_daily\_report\_level0\_KSPT\_L0\_4504\_N\_20101210\_2.PNG



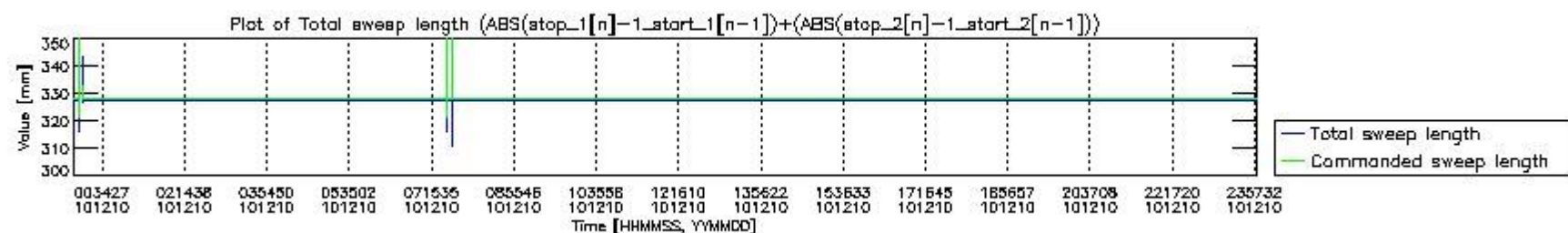
mipas\_daily\_report\_level0\_KSPT\_L0\_4504\_N\_20101210\_3.PNG



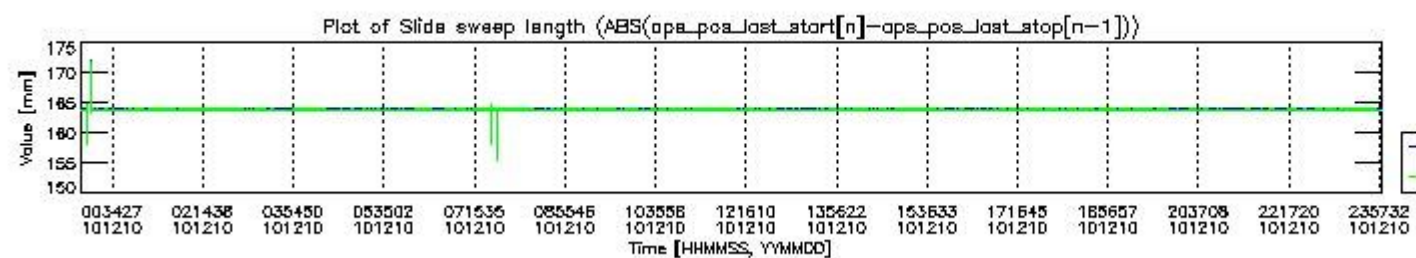
mipas\_daily\_report\_level0\_KSPT\_L0\_4504\_N\_20101210\_4.PNG



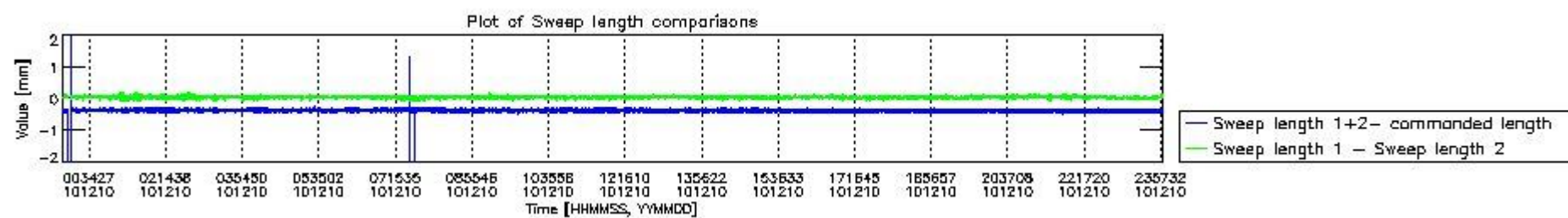
mipas\_daily\_report\_level0\_KSPT\_L0\_4504\_N\_20101210\_5.PNG



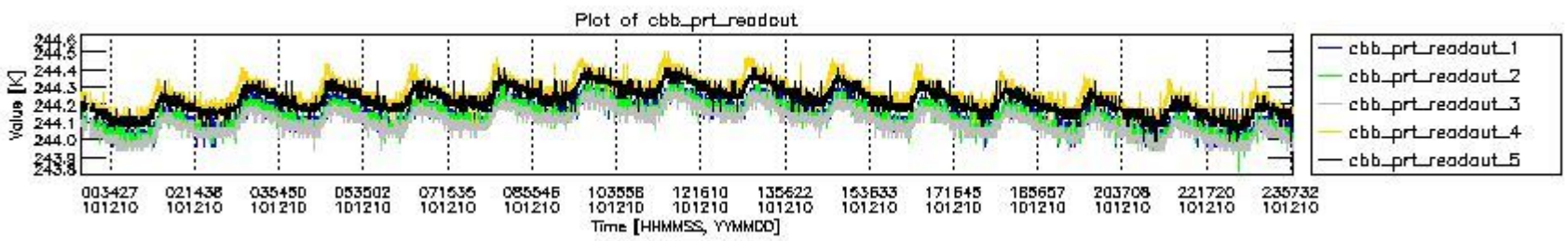
mipas\_daily\_report\_level0\_KSPT\_L0\_4504\_N\_20101210\_6.PNG



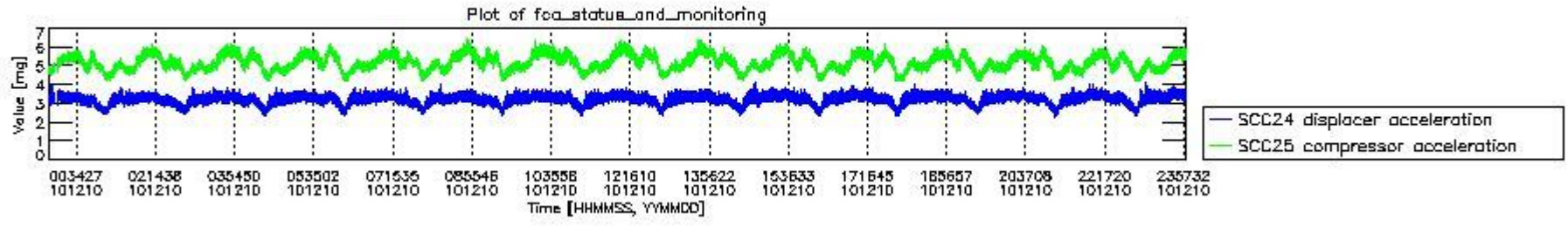
mipas\_daily\_report\_level0\_KSPT\_L0\_4504\_N\_20101210\_7.PNG



mipas\_daily\_report\_level0\_KSPT\_L0\_4504\_N\_20101210\_8.PNG



mipas\_daily\_report\_level0\_KSPT\_L0\_4504\_N\_20101210\_9.PNG

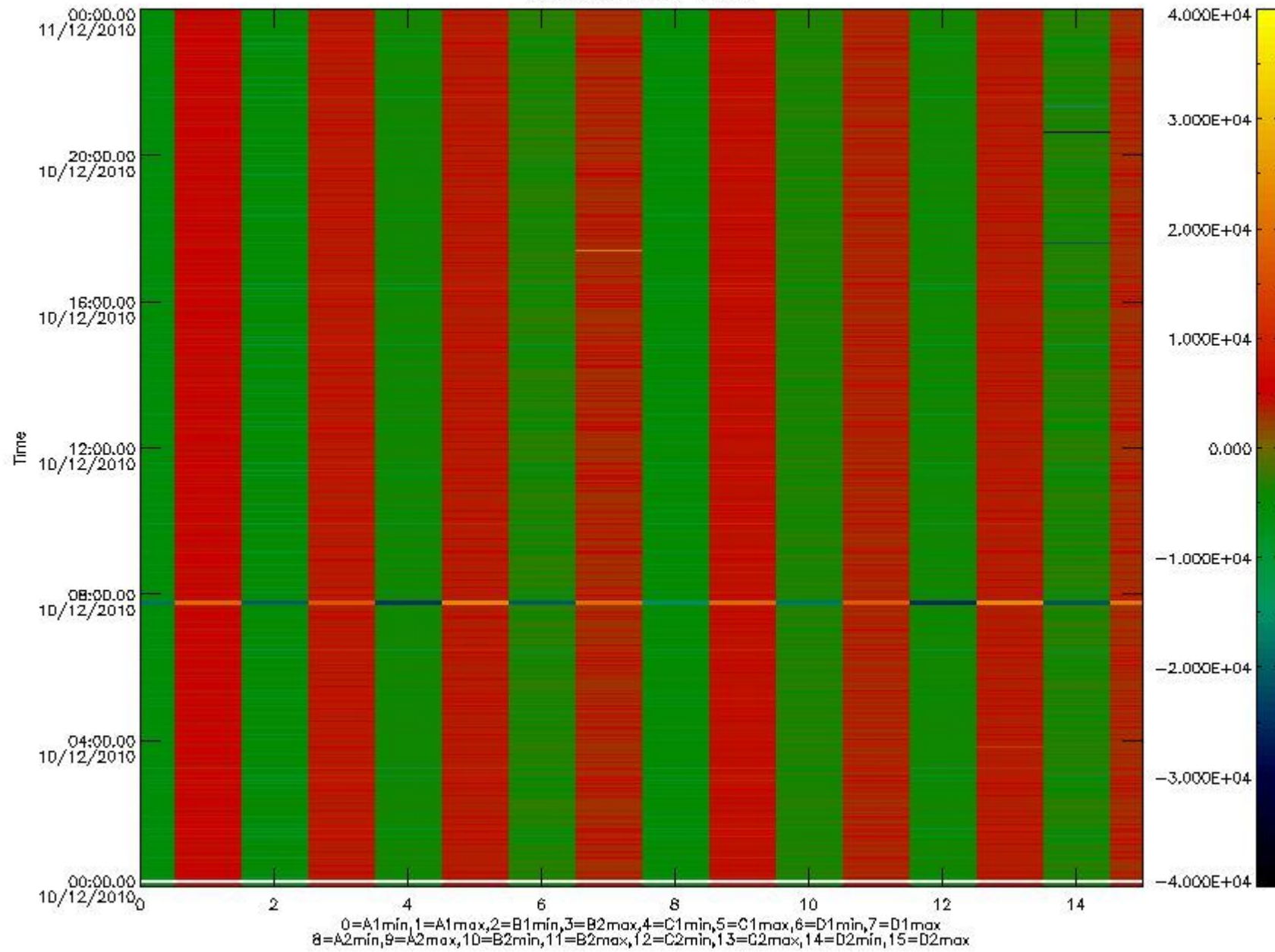


mipas\_daily\_report\_level0\_KSPT\_L0\_4504\_N\_20101210\_10.PNG

The following table shows channel statistics for all channels for this day.

Channel	Min	Max	ADC
A1	-18370	19516	16bit
B1	-20288	17483	16bit
C1	-24633	24381	16bit
D1	-20367	32767	16bit
A2	-15875	19654	16bit
B2	-18394	18017	16bit
C2	-25448	25072	16bit
D2	-32768	22196	16bit

MIPNLOP\_MIPSOUPAC\_aux\_fields\_igm\_cal, channel statistics plot  
Colour indicates value.



mipas\_daily\_report\_level0\_KSPT\_L0\_4504\_N\_20101210\_11.PNG

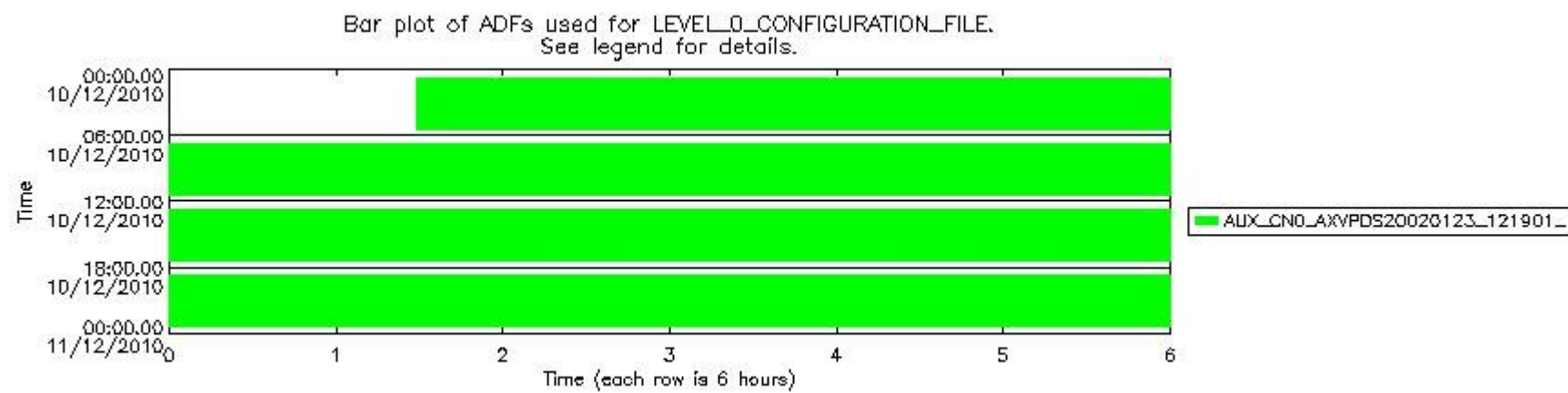
### 0.3 ADF monitoring

The use of ADFs is shown in two ways:

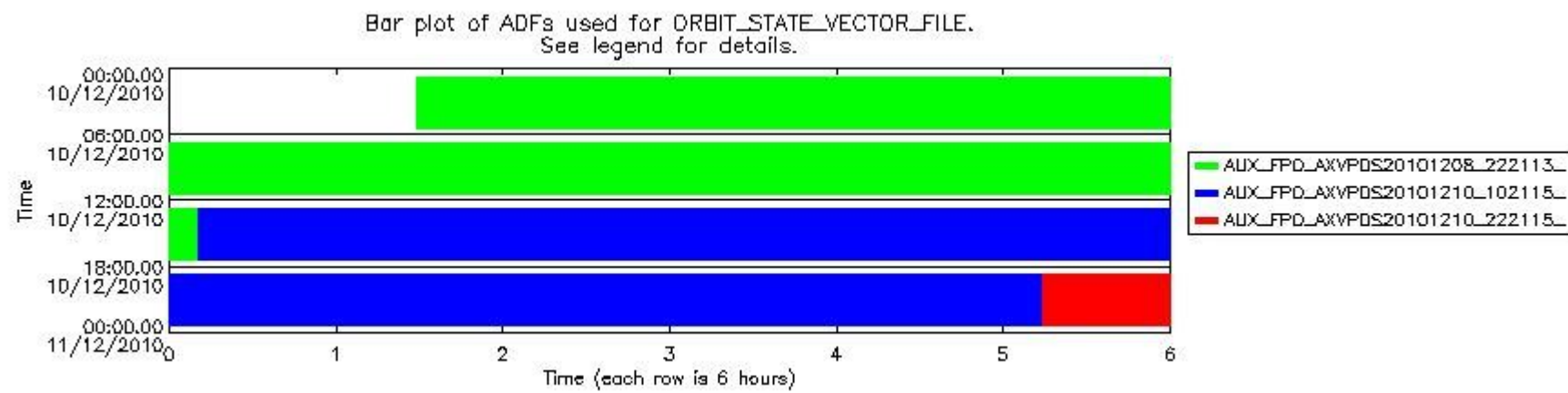
1. By means of two tables that can be used to find the ADF used for a specific product.
2. By means of plots that show changes in ADF using colours.

Number	ADF
0	AUX_CN0_AXVPDS20020123_121901_20020101_000000_20200101_000000
1	AUX_FPO_AXVPDS20101208_222113_20101208_193828_20101218_201208
2	AUX_FPO_AXVPDS20101210_102115_20101209_190145_20101219_211538
3	AUX_FPO_AXVPDS20101210_222115_20101210_182501_20101220_203854

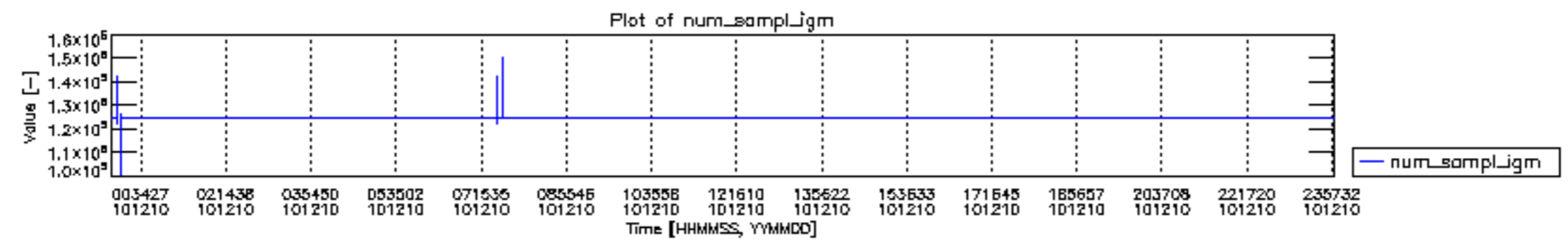
Number	Product name	#CNO	#FPO
0	MIP_NL__0PNPDE20101210_012915_000043753097_00189_45893_2468.N1	0	1
1	MIP_NL__0PNPDE20101210_024136_000061823097_00190_45894_2469.N1	0	1
2	MIP_NL__0PNPDE20101210_042405_000060673097_00191_45895_2470.N1	0	1
3	MIP_NL__0PNPDK20101210_060436_000039803097_00192_45896_3509.N1	0	1
4	MIP_NL__0PNPDK20101210_070955_000061493097_00193_45897_3510.N1	0	1
5	MIP_NL__0PNPDK20101210_085107_000059713097_00194_45898_3511.N1	0	1
6	MIP_NL__0PNPDK20101210_102901_000060523097_00195_45899_3512.N1	0	1
7	MIP_NL__0PNPDK20101210_120825_000061423097_00196_45900_3513.N1	0	2
8	MIP_NL__0PNPDK20101210_134949_000059203097_00197_45901_3514.N1	0	2
9	MIP_NL__0PNPDK20101210_152745_000057803097_00198_45902_3515.N1	0	2
10	MIP_NL__0PNPDK20101210_170226_000060373097_00199_45903_3516.N1	0	2
11	MIP_NL__0PNPDK20101210_184200_000059813097_00200_45904_3517.N1	0	2
12	MIP_NL__0PNPDE20101210_201946_000044713097_00201_45905_2471.N1	0	2
13	MIP_NL__0PNPDE20101210_213320_000061003097_00201_45905_2472.N1	0	2
14	MIP_NL__0PNPDE20101210_231354_000060733097_00202_45906_2473.N1	0	3

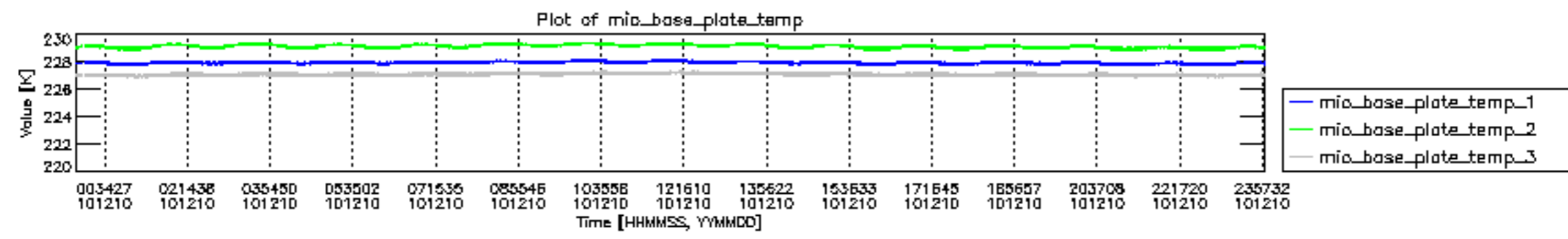


mipas\_daily\_report\_level0\_KSPT\_L0\_4504\_N\_20101210\_12.PNG

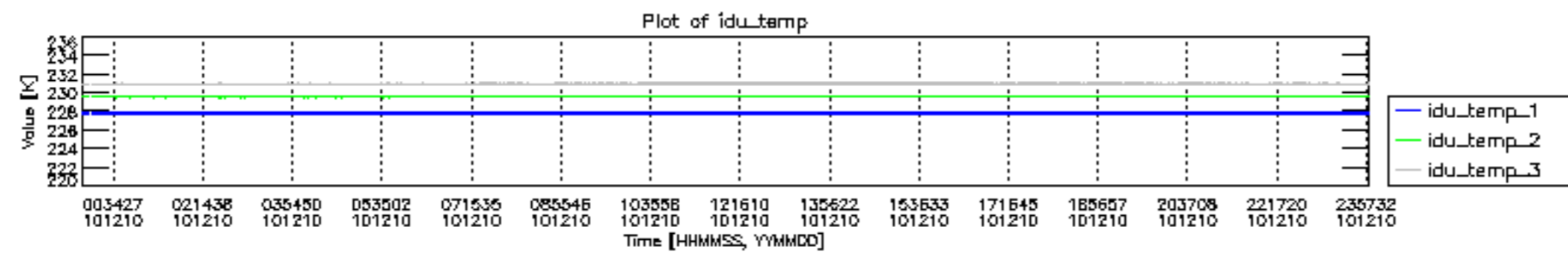


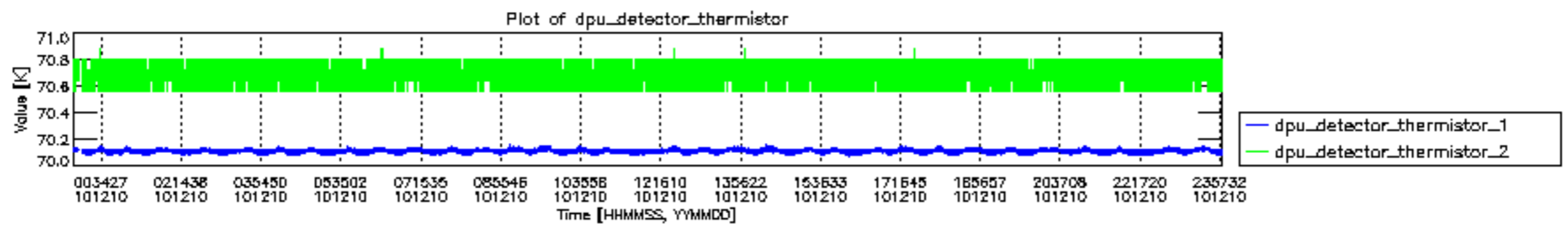
mipas\_daily\_report\_level0\_KSPT\_L0\_4504\_N\_20101210\_13.PNG

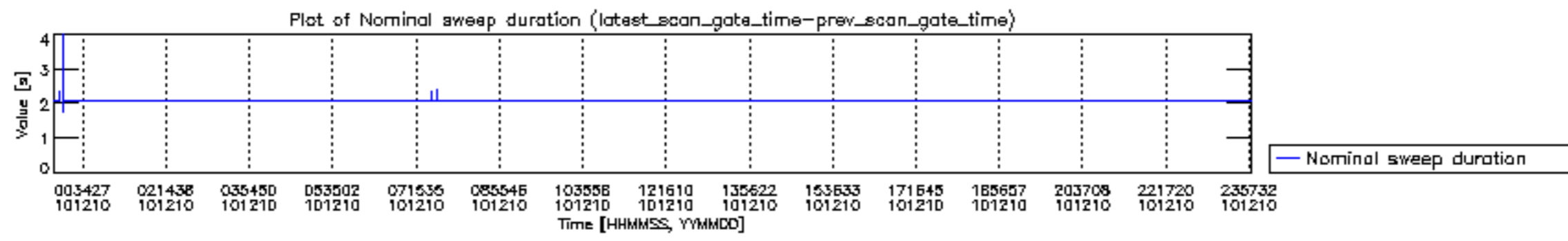


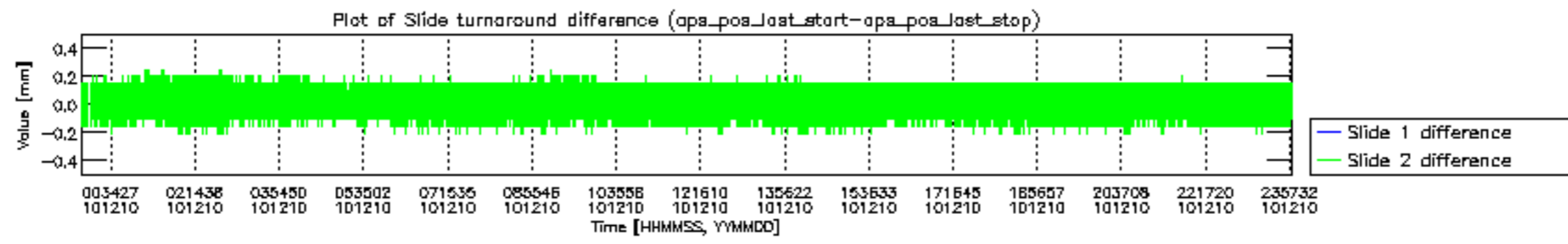


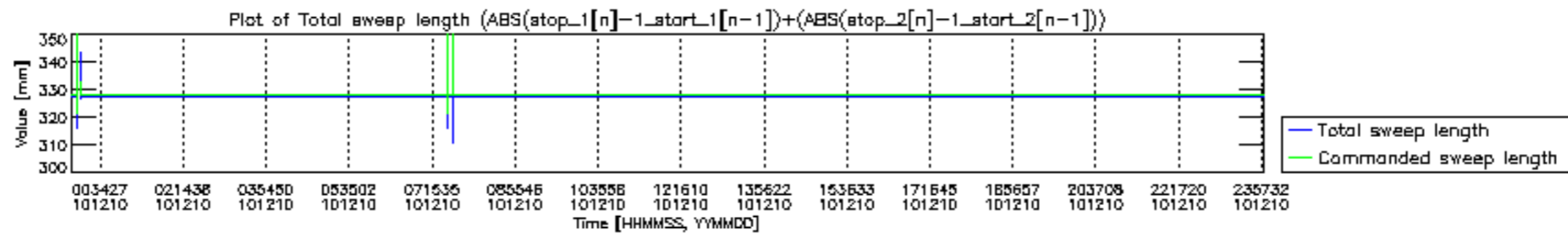


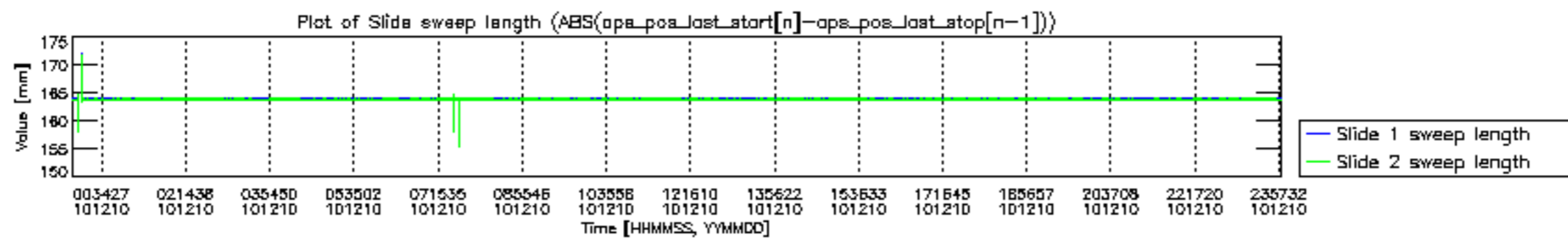


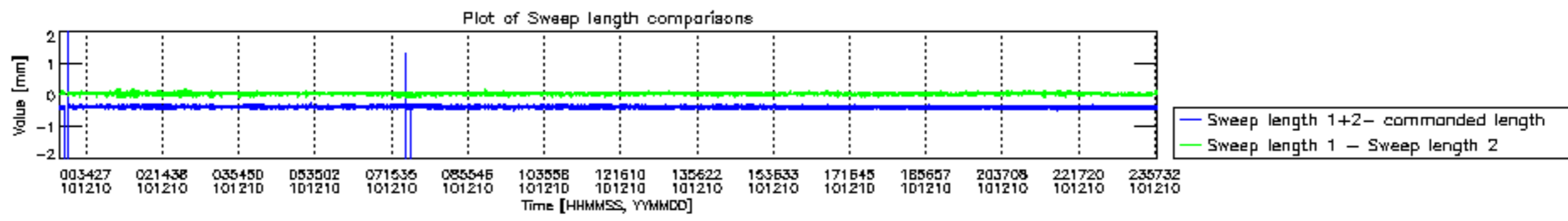


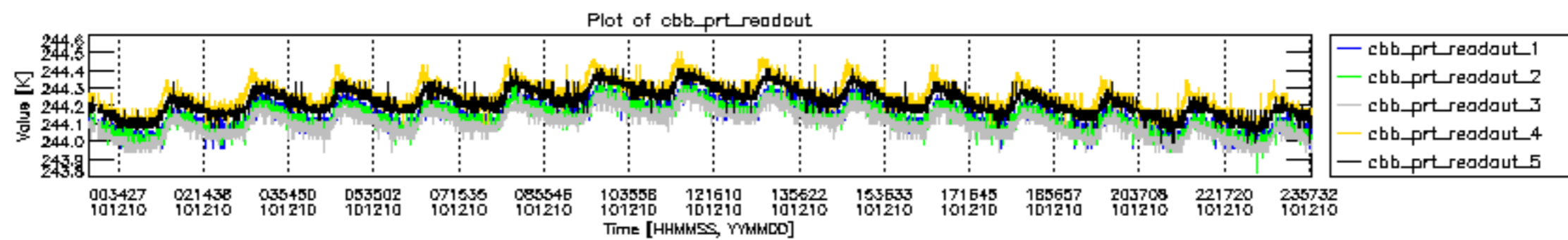




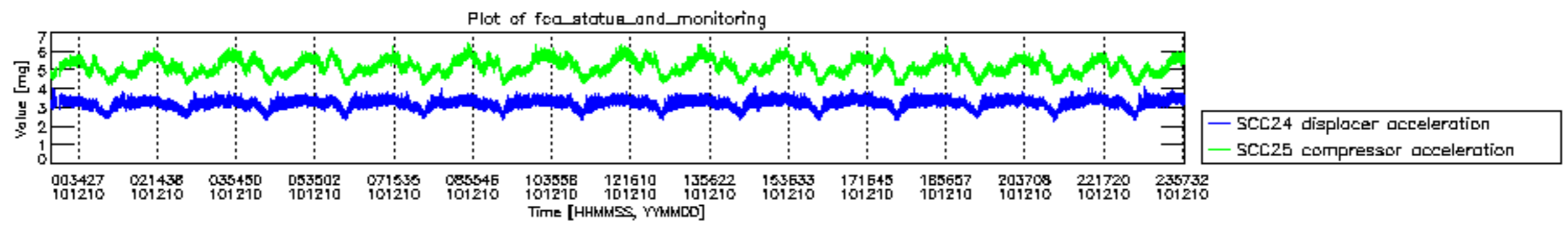




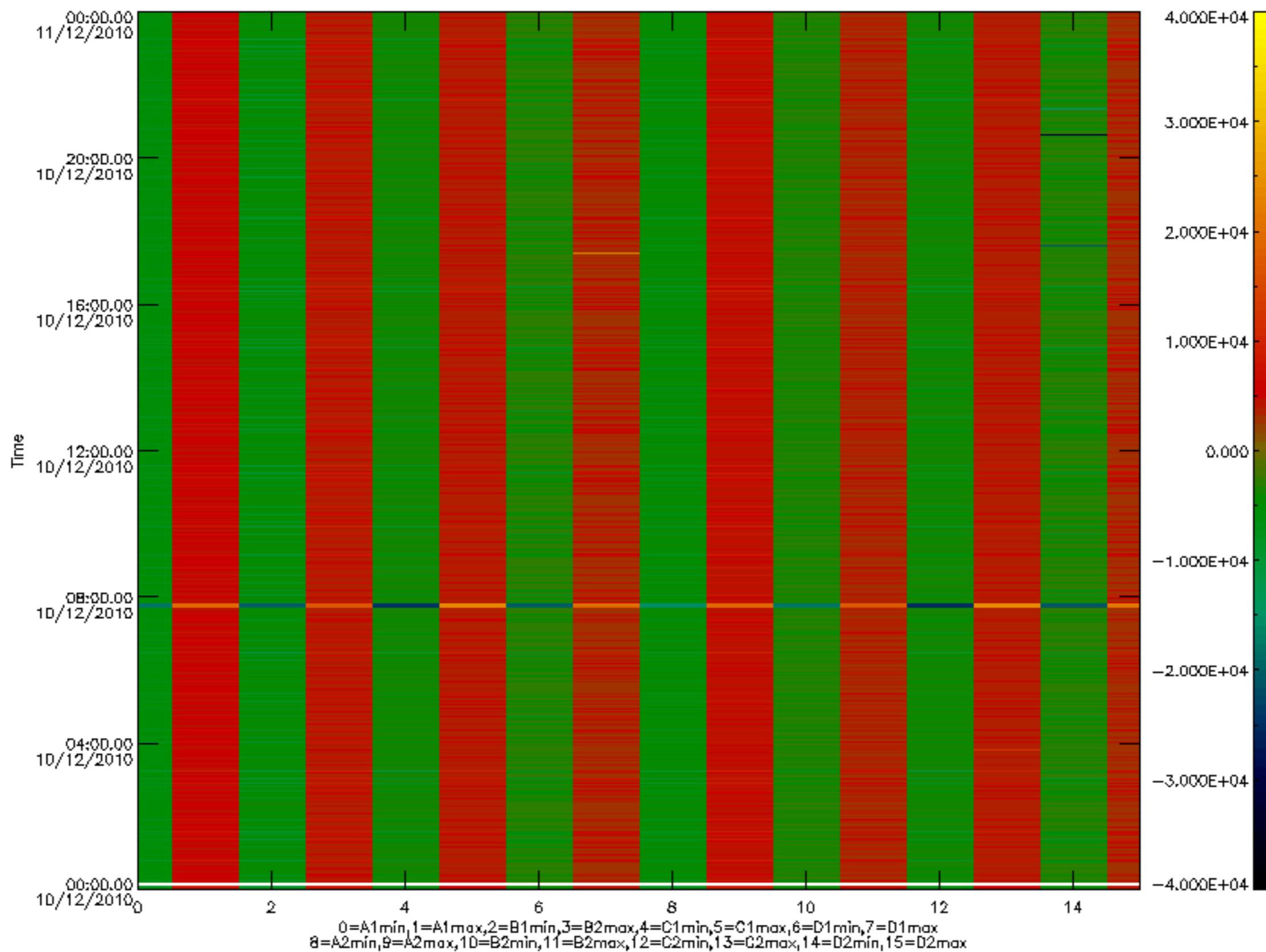


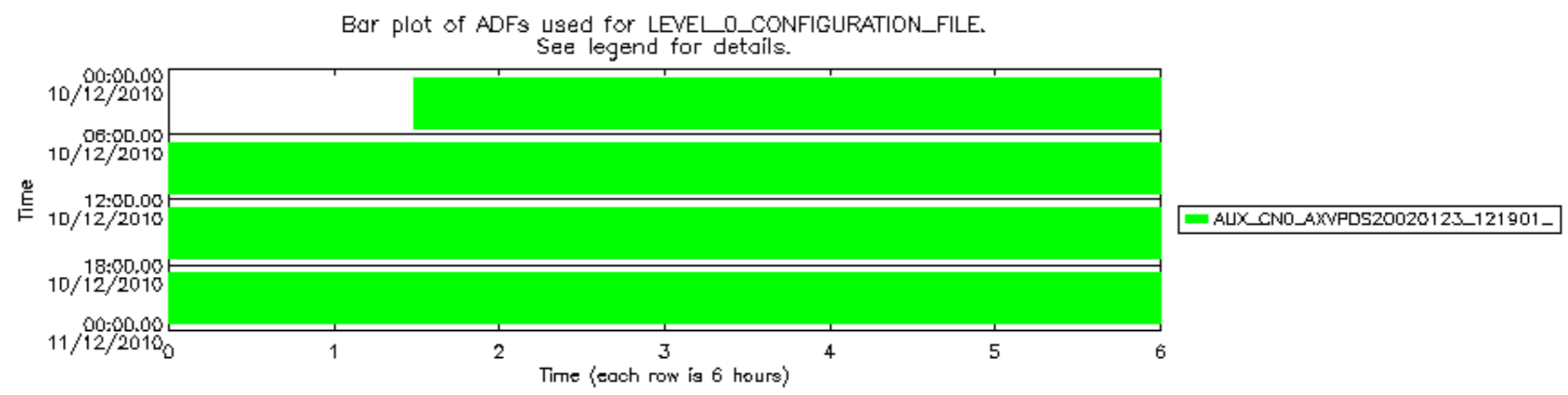






MIPNLOP\_MIPSOUPAC\_aux\_fields\_igm\_cal, channel statistics plot  
 Colour indicates value.





Bar plot of ADFs used for ORBIT\_STATE\_VECTOR\_FILE.  
See legend for details.

