

0. MIPAS Daily Report for level 0 products

[0.1 General Info](#)

[0.2 Instrument Operational Performance Parameters](#)

[0.3 ADF monitoring](#)

0.1 General Info

This report contains a daily analysis on parameters extracted from MIPAS level 0 data (The MIP_NL__0P product).

0.1.1 Report summary

The table below shows general characteristics of the data that are included into this report.

Item	Value
Report version	v1.6 08-11-2010
Time of report generation	07DEC2010 05:24:28
Data source version	KSPT_L0/4504-N
Processing scope for products	02DEC2010 00:00:00 to 03DEC2010 00:00:00
Start time of first product within scope	02DEC2010 01:22:30
Stop time of last product within scope	03DEC2010 00:47:52
Total number of level 0 products	13
Number of level 0 products with errors	0

0.1.2 Product Quality Indicators per product

The following table shows a summary for each product used in this report.

#	Product name	Start time	Stop time	Prod err	ISP err sign	ISP miss sign	ISP disc sign	rs sign
0	MIP_NL__0PNPDE20101202_012230_000103493097_00074_45778_2249.N1	02DEC2010 01:22:30	02DEC2010 04:14:59	0	0	0	0	0
1	MIP_NL__0PNPDE20101202_041426_000062253097_00076_45780_2250.N1	02DEC2010 04:14:26	02DEC2010 05:58:11	0	0	0	0	0
2	MIP_NL__0PNPDK20101202_055738_000039843097_00077_45781_3441.N1	02DEC2010 05:57:38	02DEC2010 07:04:02	0	0	0	0	0
3	MIP_NL__0PNPDK20101202_070301_000062693097_00078_45782_3442.N1	02DEC2010 07:03:01	02DEC2010 08:47:30	0	0	0	0	0
4	MIP_NL__0PNPDK20101202_084601_000060363097_00079_45783_3443.N1	02DEC2010 08:46:01	02DEC2010 10:26:37	0	0	0	0	0
5	MIP_NL__0PNPDK20101202_102505_000059123097_00080_45784_3444.N1	02DEC2010 10:25:05	02DEC2010 12:03:37	0	0	0	0	0
6	MIP_NL__0PNPDK20101202_120239_000060523097_00081_45785_3445.N1	02DEC2010 12:02:39	02DEC2010 13:43:31	0	0	0	0	0
7	MIP_NL__0PNPDK20101202_134236_000058953097_00082_45786_3446.N1	02DEC2010 13:42:36	02DEC2010 15:20:52	0	0	0	0	0
8	MIP_NL__0PNPDK20101202_152008_000060623097_00083_45787_3447.N1	02DEC2010 15:20:08	02DEC2010 17:01:10	0	0	0	0	0
9	MIP_NL__0PNPDK20101202_170024_000057263097_00084_45788_3448.N1	02DEC2010 17:00:24	02DEC2010 18:35:50	0	0	0	0	0
10	MIP_NL__0PNPDK20101202_183444_000059643097_00085_45789_3449.N1	02DEC2010 18:34:44	02DEC2010 20:14:08	0	0	0	0	0
11	MIP_NL__0PNPDE20101202_201226_000044923097_00086_45790_2251.N1	02DEC2010 20:12:26	02DEC2010 21:27:17	0	0	0	0	0
12	MIP_NL__0PNPDE20101202_230623_000060903097_00087_45791_2252.N1	02DEC2010 23:06:23	03DEC2010 00:47:52	0	0	0	0	0

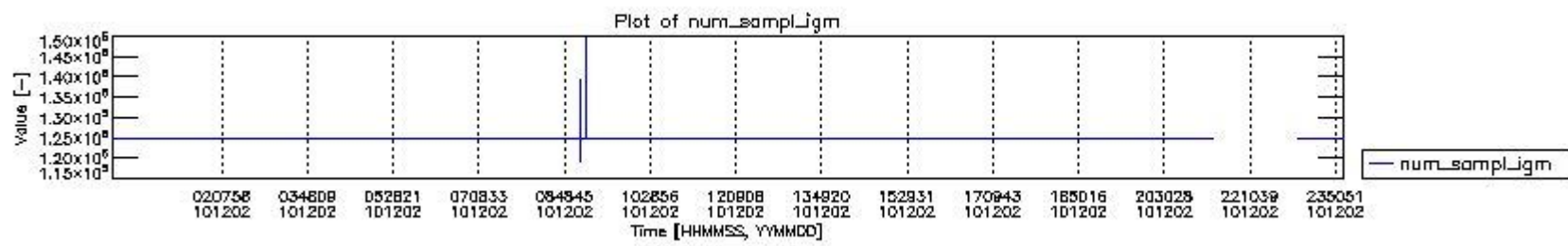
0.2 Instrument Operational Performance Parameters

The following plots give an overview of various instrument parameters for this day. The instrument parameters are part of the auxiliary data field within the source packets of the MIP_NL__0P product. The auxiliary data is normally included twice per interferogram. Note that only the first packet is currently included in monitoring.

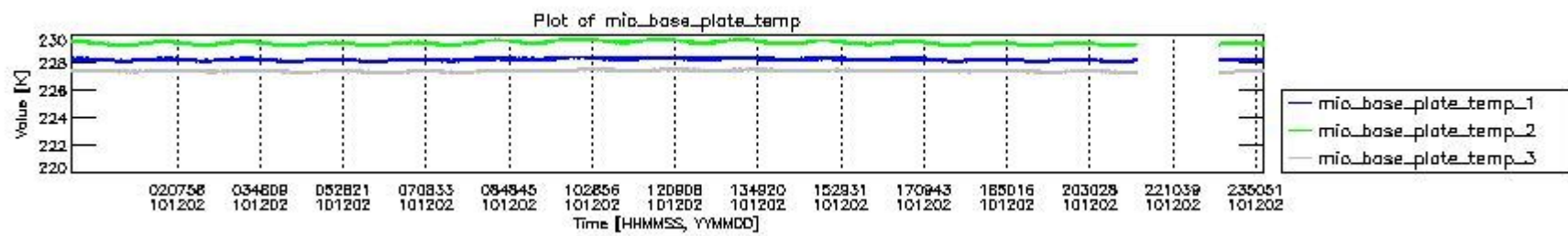
The following table shows the counts of various interferogram number of samples

Number of igm samples	Count [#]	Count [%]
119130	1	0.0025777182
124800	36036	92.890653
124803	2752	7.0938805
127085	1	0.0025777182
133592	1	0.0025777182

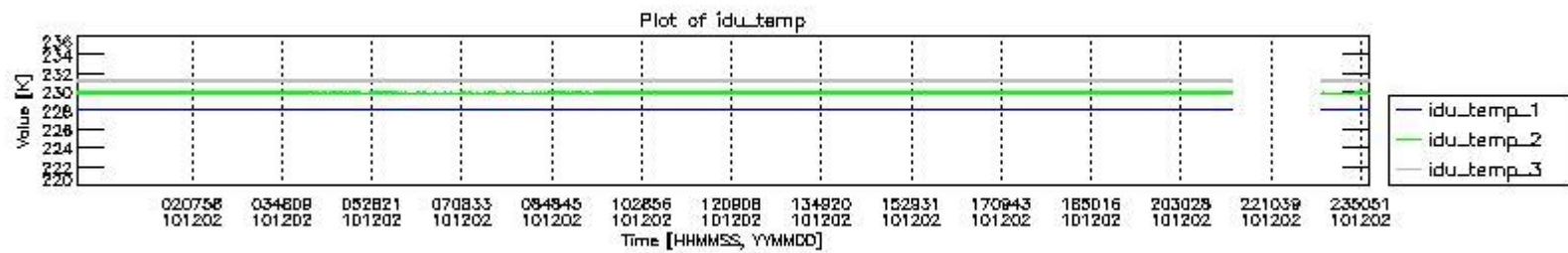
139262	1	0.0025777182
147217	1	0.0025777182
149502	1	0.0025777182



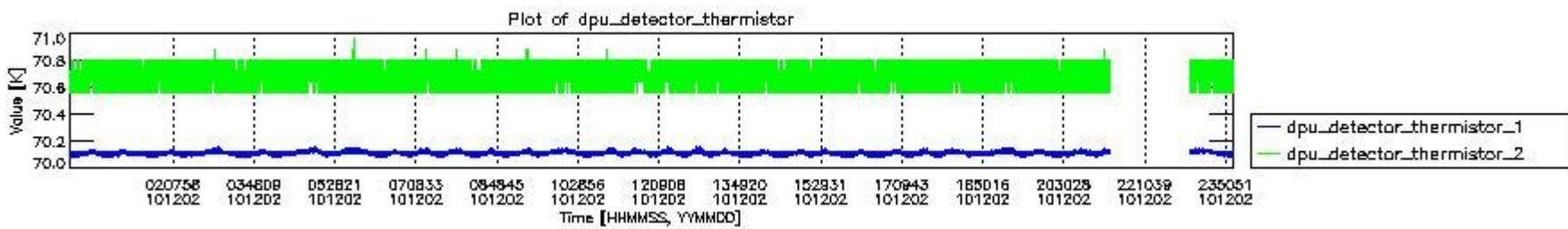
mipas_daily_report_level0_KSPT_L0_4504_N_20101202_0.PNG



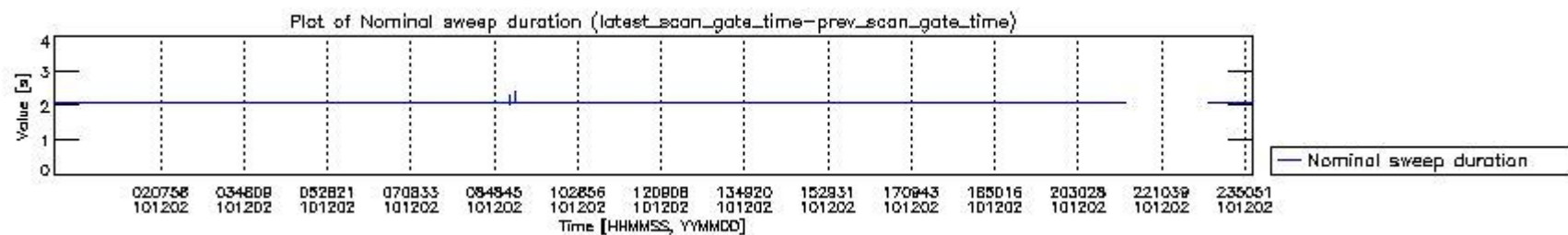
mipas_daily_report_level0_KSPT_L0_4504_N_20101202_1.PNG



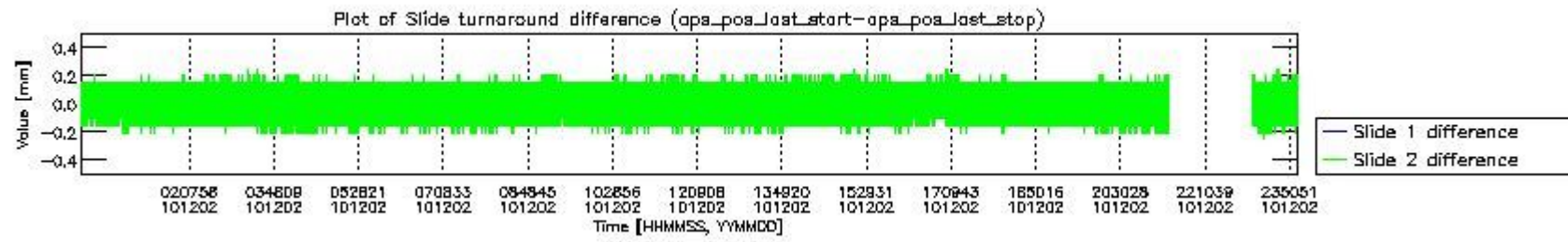
mipas_daily_report_level0_KSPT_L0_4504_N_20101202_2.PNG



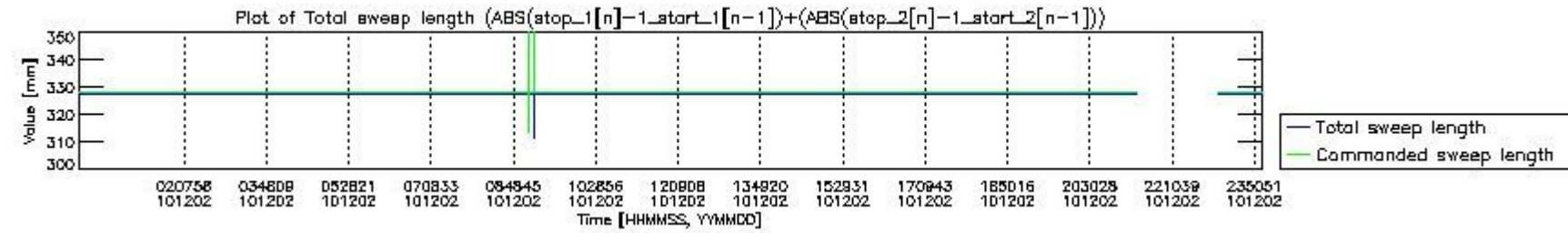
mipas_daily_report_level0_KSPT_L0_4504_N_20101202_3.PNG



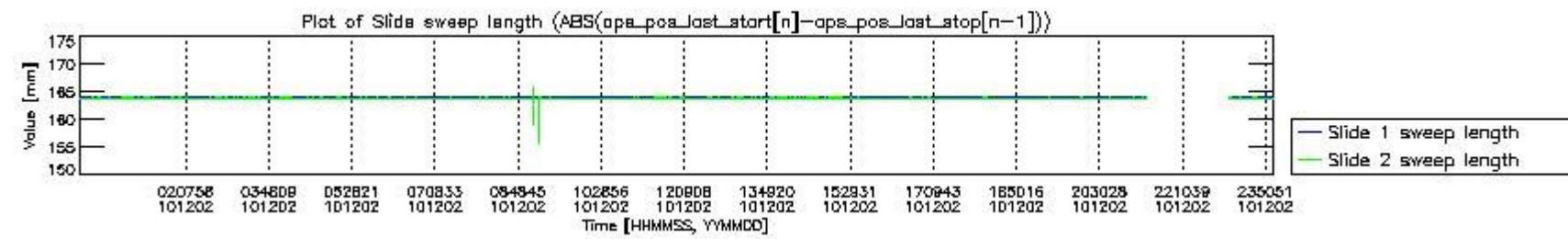
mipas_daily_report_level0_KSPT_L0_4504_N_20101202_4.PNG



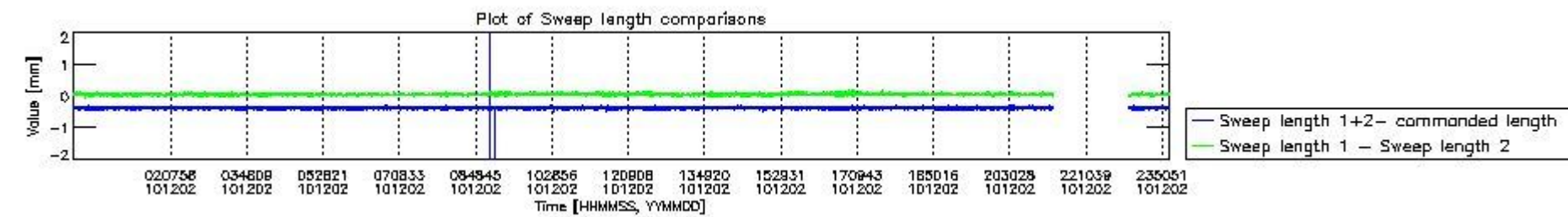
mipas_daily_report_level0_KSPT_L0_4504_N_20101202_5.PNG



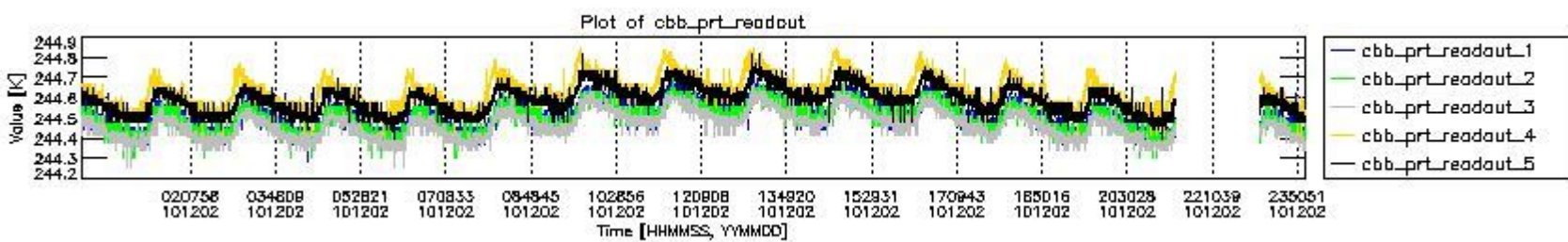
mipas_daily_report_level0_KSPT_L0_4504_N_20101202_6.PNG



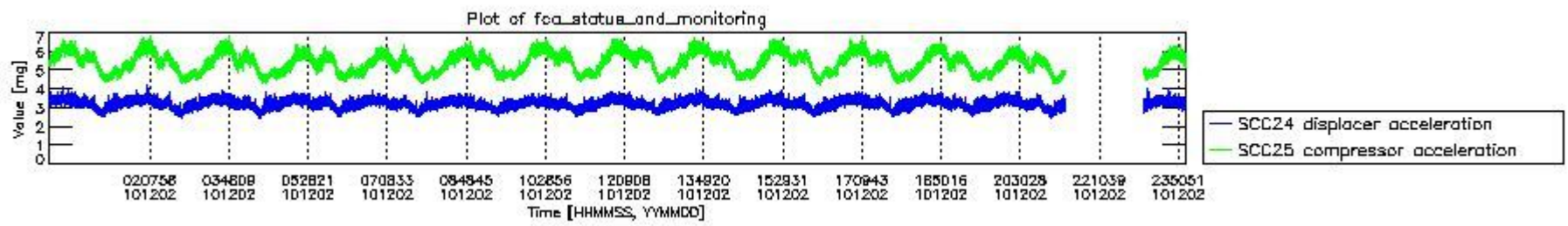
mipas_daily_report_level0_KSPT_L0_4504_N_20101202_7.PNG



mipas_daily_report_level0_KSPT_L0_4504_N_20101202_8.PNG



mipas_daily_report_level0_KSPT_L0_4504_N_20101202_9.PNG

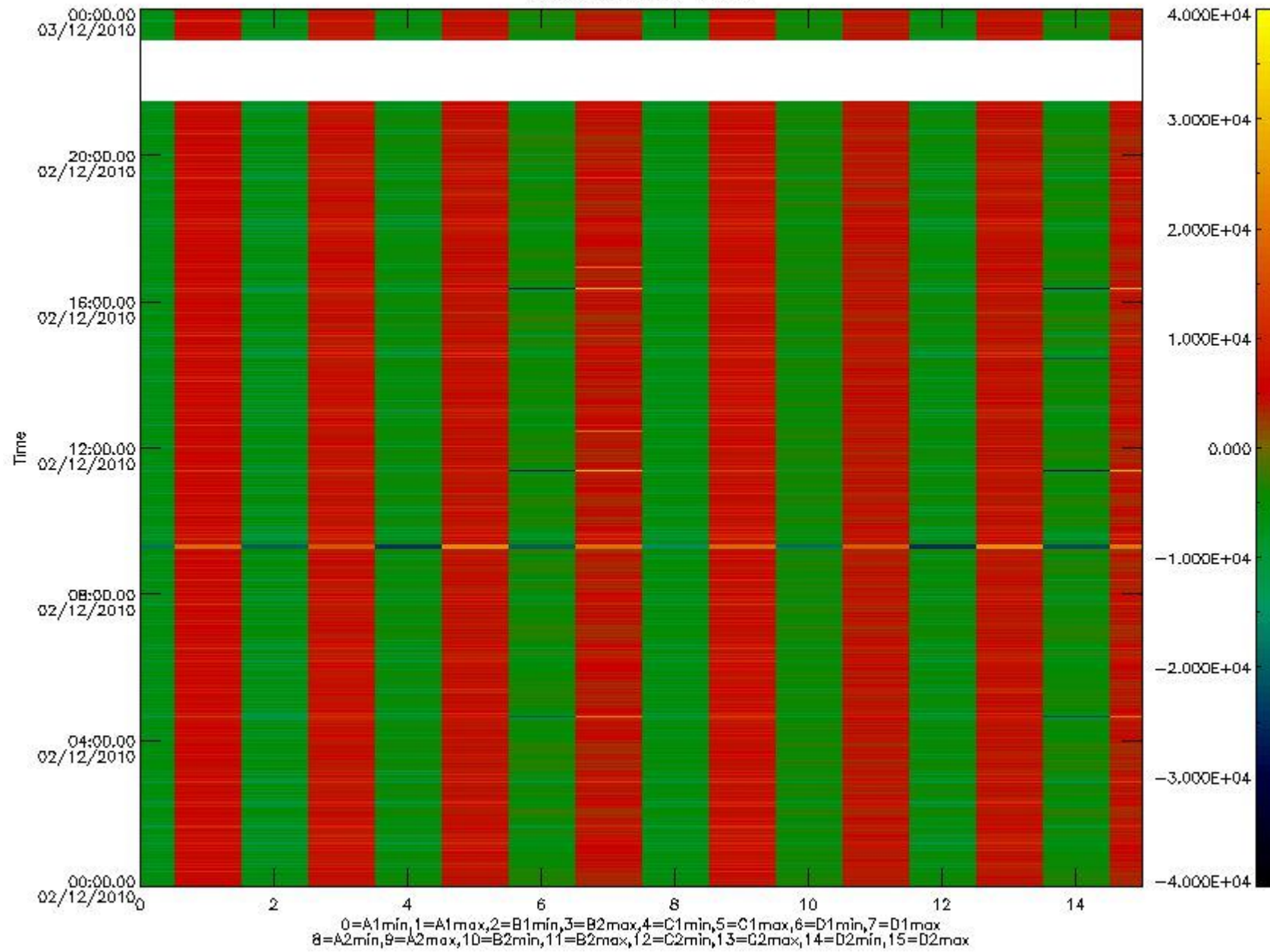


mipas_daily_report_level0_KSPT_L0_4504_N_20101202_10.PNG

The following table shows channel statistics for all channels for this day.

Channel	Min	Max	ADC
A1	-18511	19683	16bit
B1	-20533	17660	16bit
C1	-24914	24799	16bit
D1	-32768	32767	16bit
A2	-15982	19812	16bit
B2	-18660	18235	16bit
C2	-25889	25486	16bit
D2	-32768	32767	16bit

MIPNLOP_MIPSOUPAC_aux_fields_igm_cal, channel statistics plot
Colour indicates value.



mipas_daily_report_level0_KSPT_L0_4504_N_20101202_11.PNG

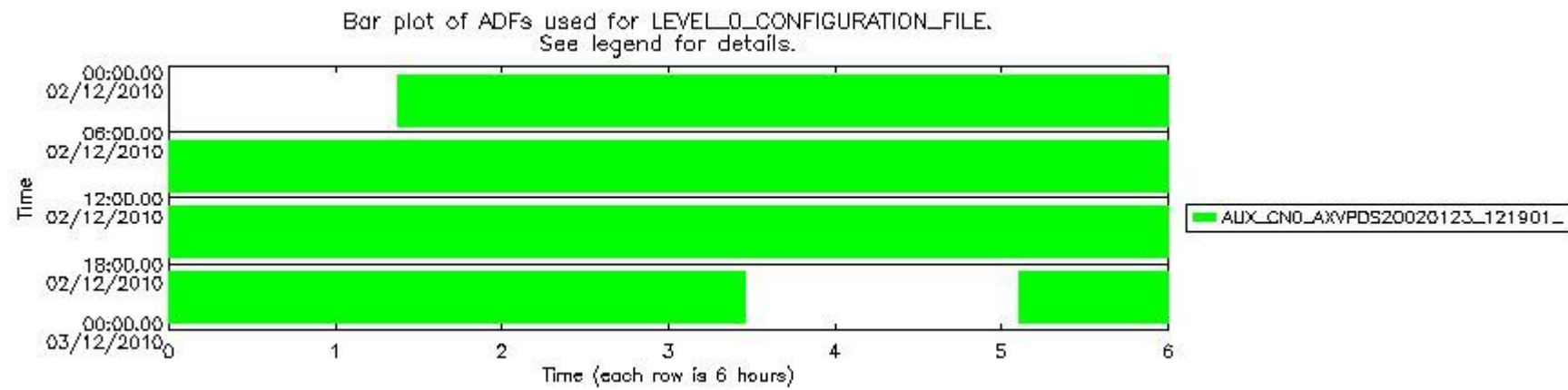
0.3 ADF monitoring

The use of ADFs is shown in two ways:

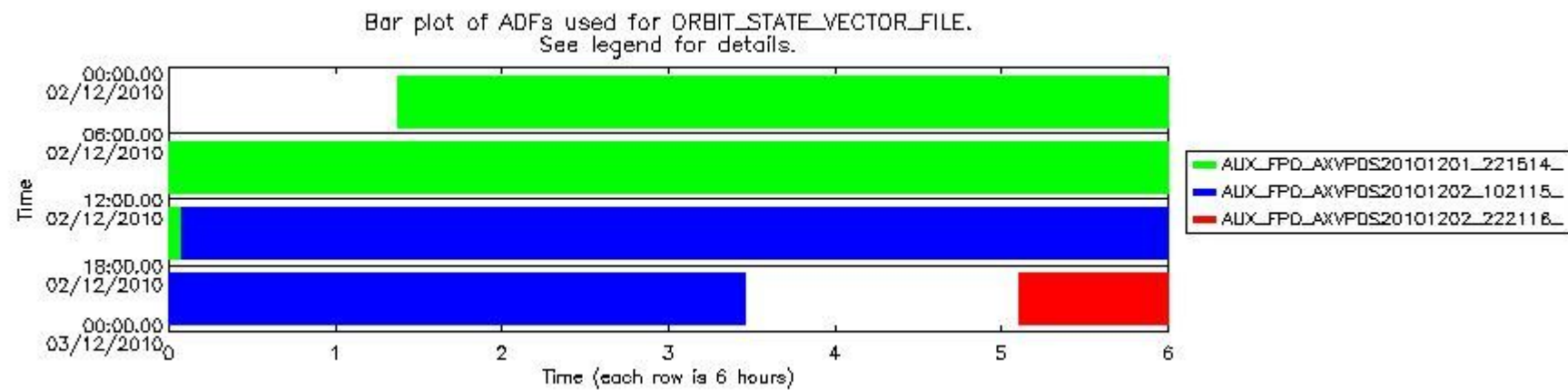
1. By means of two tables that can be used to find the ADF used for a specific product.
2. By means of plots that show changes in ADF using colours.

Number	ADF
0	AUX_CN0_AXVPDS20020123_121901_20020101_000000_20200101_000000
1	AUX_FPO_AXVPDS20101201_221514_20101201_103341_20101211_124735
2	AUX_FPO_AXVPDS20101202_102115_20101201_185451_20101211_210845
3	AUX_FPO_AXVPDS20101202_222116_20101202_195822_20101212_203202

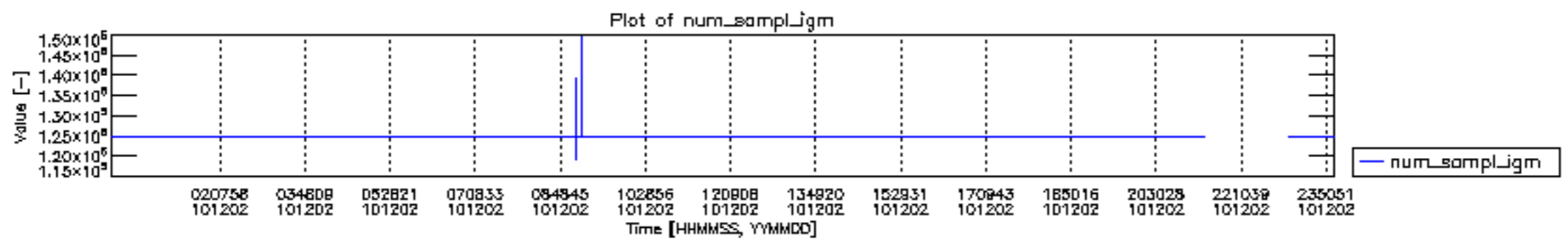
Number	Product name	#CNO	#FPO
0	MIP_NL__0PNPDE20101202_012230_000103493097_00074_45778_2249.N1	0	1
1	MIP_NL__0PNPDE20101202_041426_000062253097_00076_45780_2250.N1	0	1
2	MIP_NL__0PNPDK20101202_055738_000039843097_00077_45781_3441.N1	0	1
3	MIP_NL__0PNPDK20101202_070301_000062693097_00078_45782_3442.N1	0	1
4	MIP_NL__0PNPDK20101202_084601_000060363097_00079_45783_3443.N1	0	1
5	MIP_NL__0PNPDK20101202_102505_000059123097_00080_45784_3444.N1	0	1
6	MIP_NL__0PNPDK20101202_120239_000060523097_00081_45785_3445.N1	0	2
7	MIP_NL__0PNPDK20101202_134236_000058953097_00082_45786_3446.N1	0	2
8	MIP_NL__0PNPDK20101202_152008_000060623097_00083_45787_3447.N1	0	2
9	MIP_NL__0PNPDK20101202_170024_000057263097_00084_45788_3448.N1	0	2
10	MIP_NL__0PNPDK20101202_183444_000059643097_00085_45789_3449.N1	0	2
11	MIP_NL__0PNPDE20101202_201226_000044923097_00086_45790_2251.N1	0	2
12	MIP_NL__0PNPDE20101202_230623_000060903097_00087_45791_2252.N1	0	3

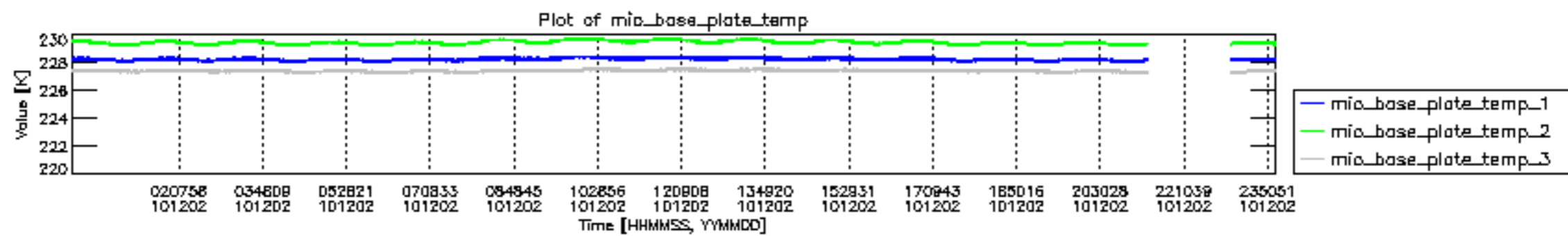


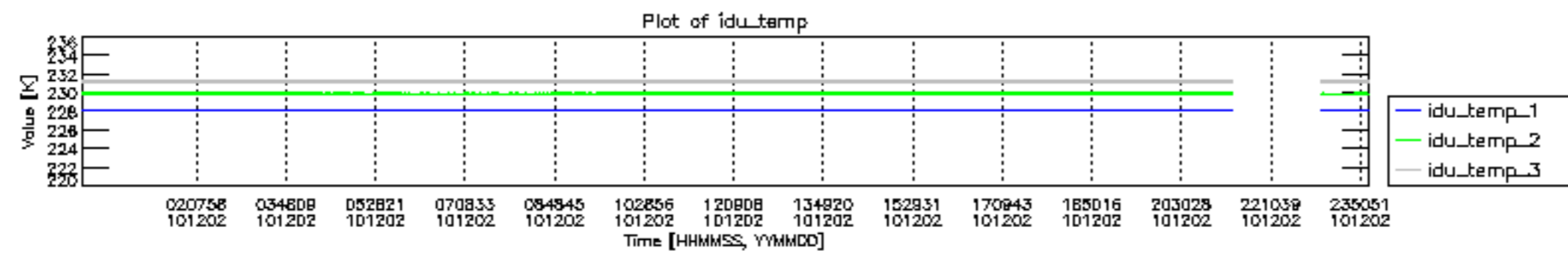
mipas_daily_report_level0_KSPT_L0_4504_N_20101202_12.PNG

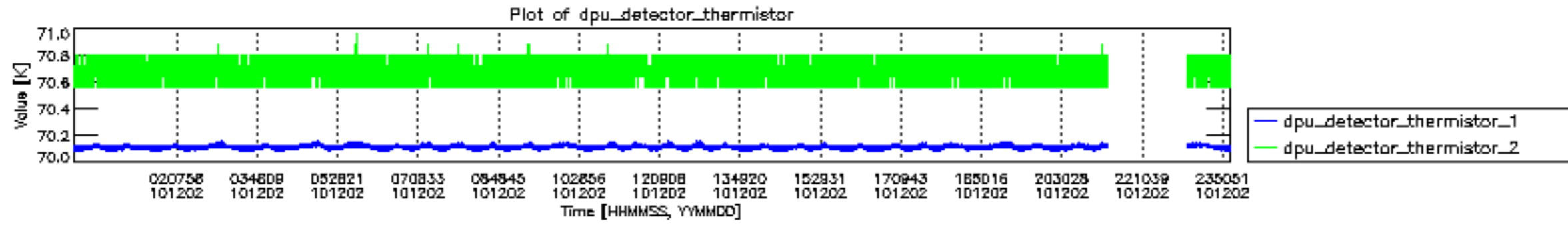


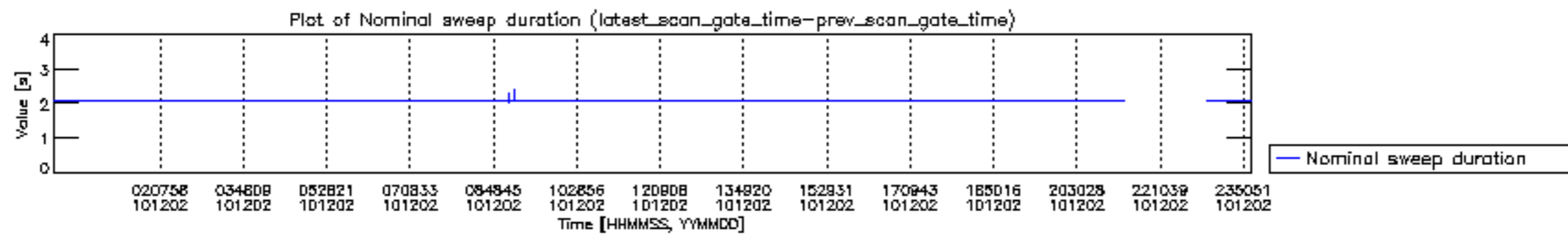
mipas_daily_report_level0_KSPT_L0_4504_N_20101202_13.PNG

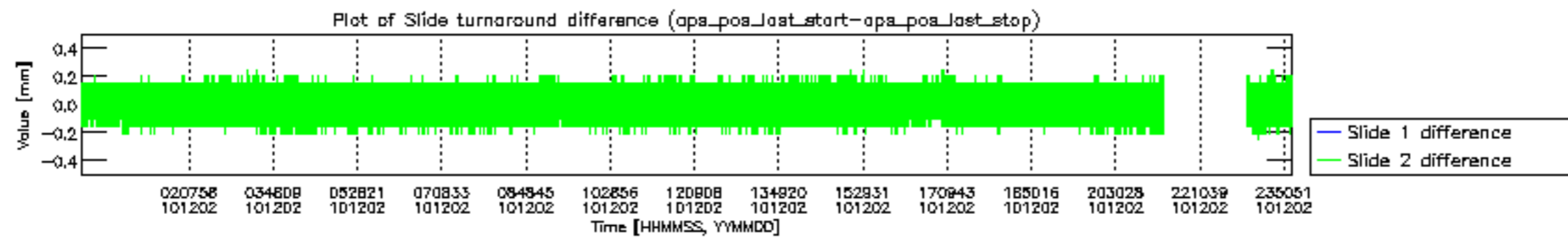


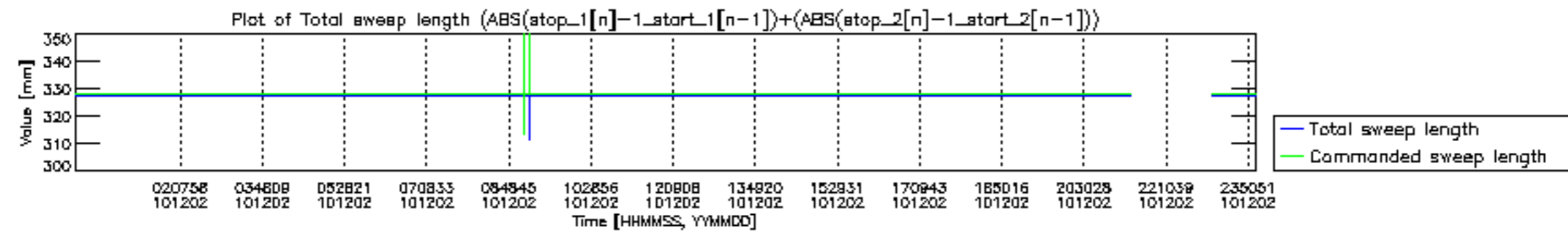


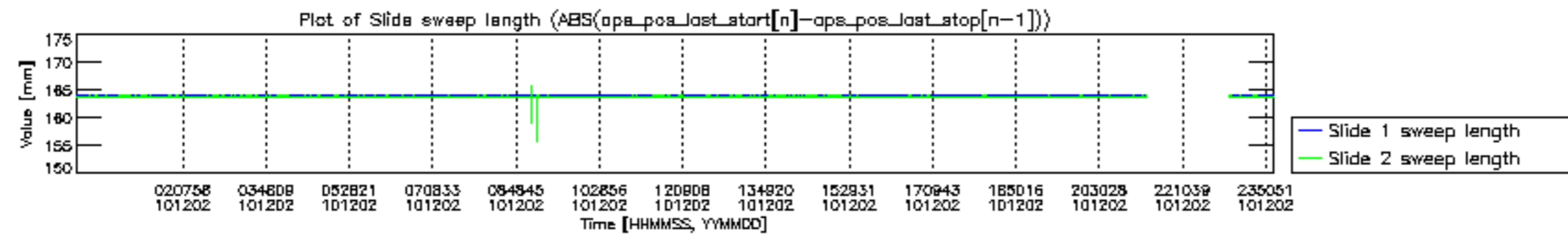


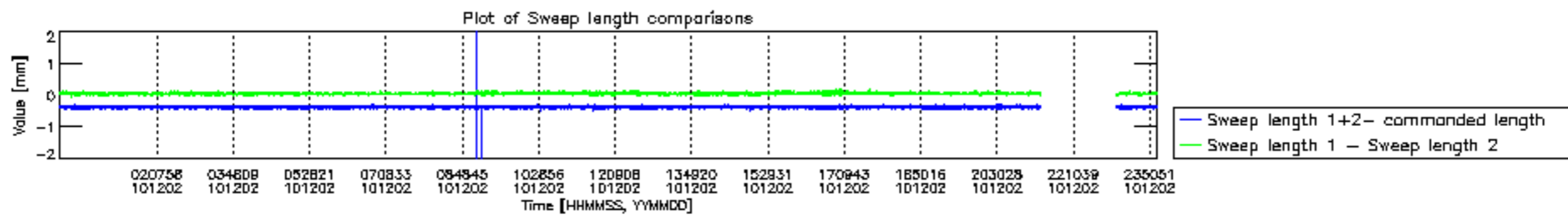


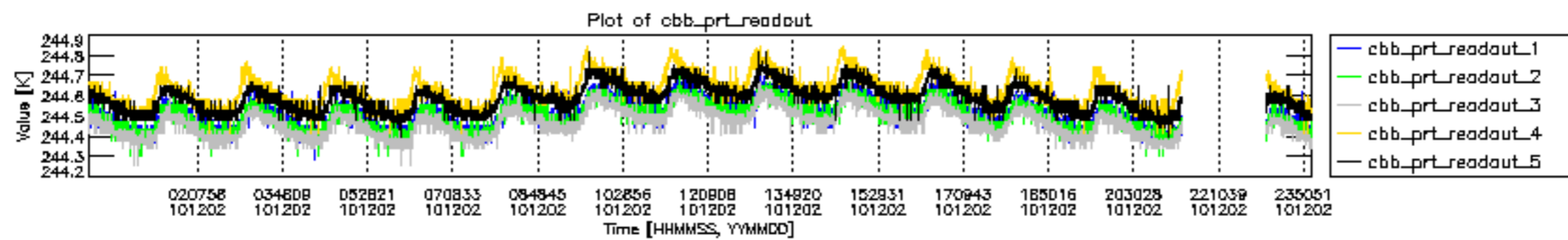


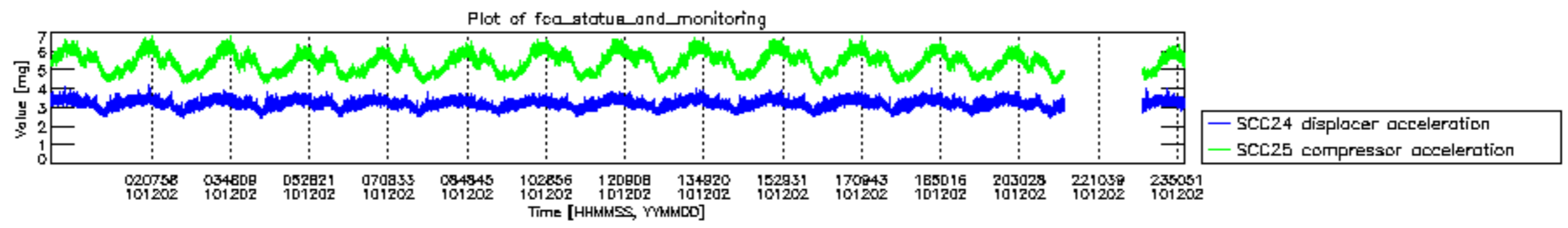




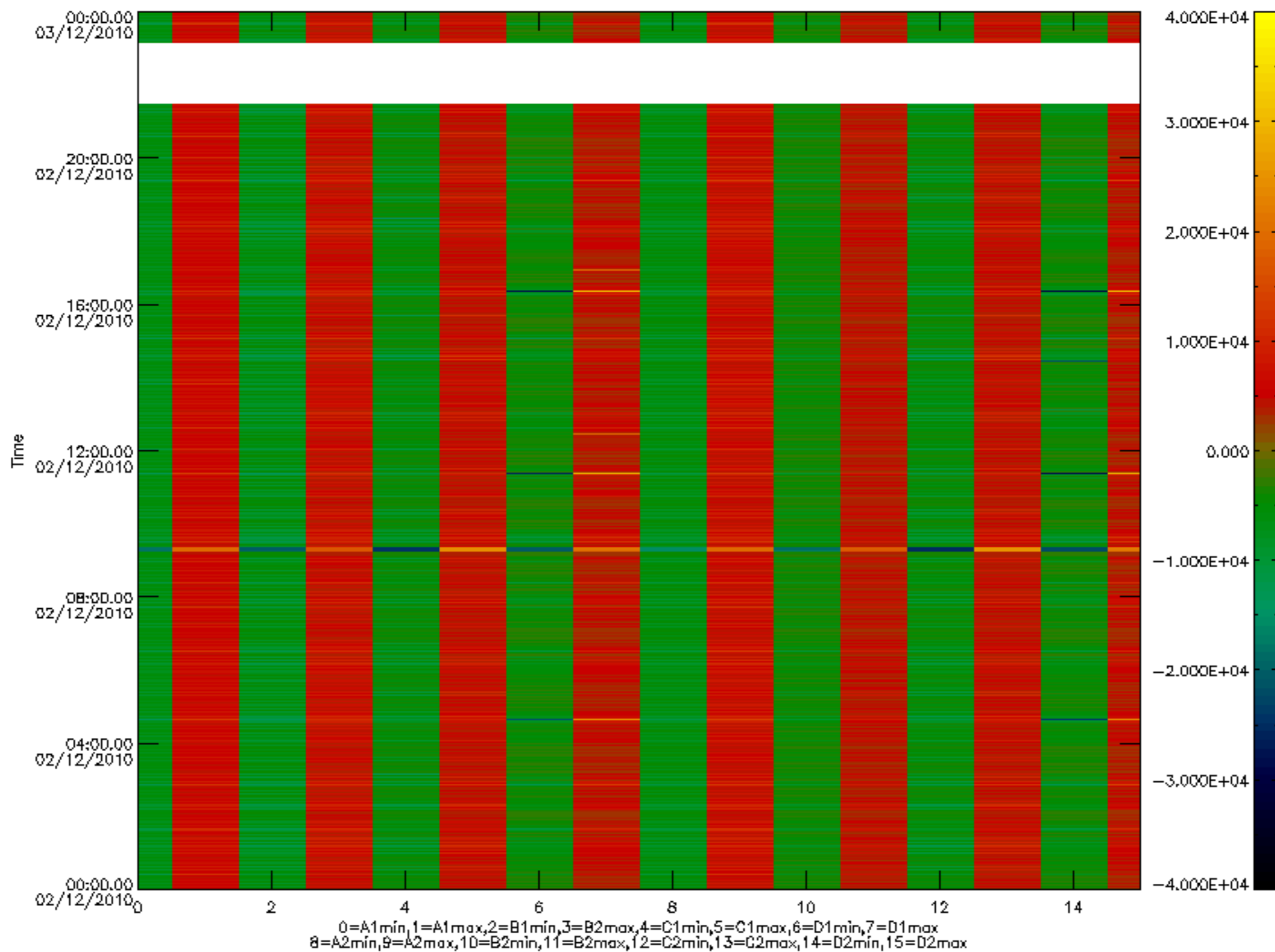


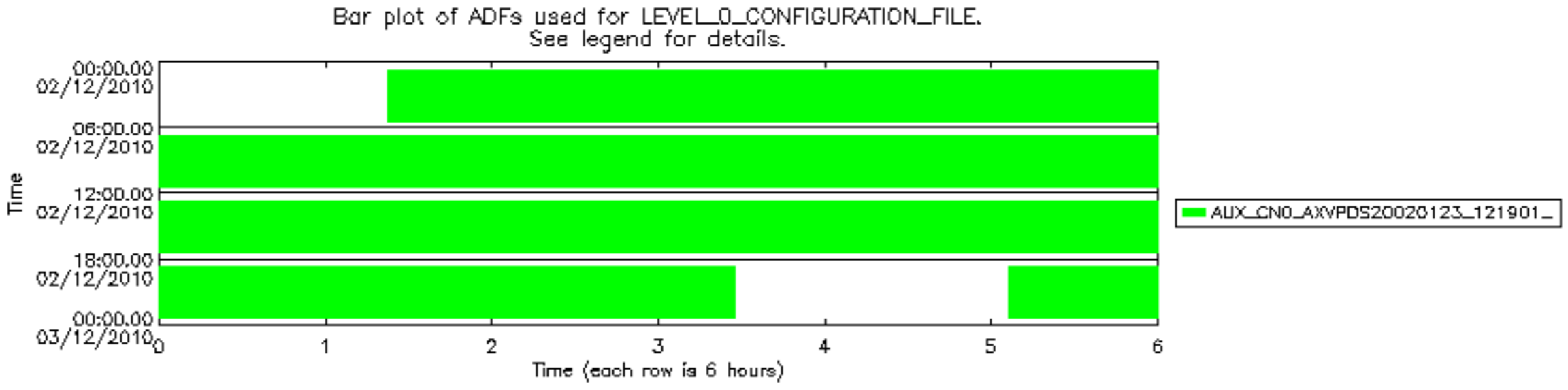






MIPNLOP_MIPSOUPAC_aux_fields_igm_cal, channel statistics plot
 Colour indicates value.





Bar plot of ADFs used for ORBIT_STATE_VECTOR_FILE.
See legend for details.

