

## 0. MIPAS Daily Report for level 0 products

### [0.1 General Info](#)

### [0.2 Instrument Operational Performance Parameters](#)

### [0.3 ADF monitoring](#)

## 0.1 General Info

This report contains a daily analysis on parameters extracted from MIPAS level 0 data (The MIP\_NL\_\_0P product).

### 0.1.1 Report summary

The table below shows general characteristics of the data that are included into this report.

Item	Value
Report version	v1.6 08-11-2010
Time of report generation	03DEC2010 05:23:56
Data source version	KSPT_L0/4504-N
Processing scope for products	28NOV2010 00:00:00 to 29NOV2010 00:00:00
Start time of first product within scope	28NOV2010 00:30:09
Stop time of last product within scope	29NOV2010 01:32:19
Total number of level 0 products	15
Number of level 0 products with errors	1

### 0.1.2 Product Quality Indicators per product

The following table shows a summary for each product used in this report.

#	Product name	Start time	Stop time	Prod err	ISP err sign	ISP miss sign	ISP disc sign	rs sign
0	MIP_NL__0PNPDE20101128_003009_000058473097_00016_45720_2224.N1	28NOV2010 00:30:09	28NOV2010 02:07:36	0	0	0	0	0
1	MIP_NL__0PNPDE20101128_020621_000045403097_00017_45721_2225.N1	28NOV2010 02:06:21	28NOV2010 03:22:00	0	0	0	0	0
2	MIP_NL__0PNPDE20101128_032125_000061483097_00018_45722_2226.N1	28NOV2010 03:21:25	28NOV2010 05:03:53	0	0	0	0	0
3	MIP_NL__0PNPDE20101128_050320_000026223097_00019_45723_2227.N1	28NOV2010 05:03:20	28NOV2010 05:47:01	0	0	0	0	0
4	MIP_NL__0PNPDK20101128_080348_000053573097_00021_45725_3404.N1	28NOV2010 08:03:48	28NOV2010 09:33:05	0	0	0	0	0
5	MIP_NL__0PNPDK20101128_093131_000059773097_00022_45726_3405.N1	28NOV2010 09:31:31	28NOV2010 11:11:08	0	0	0	0	0
6	MIP_NL__0PNPDK20101128_111009_000060043097_00023_45727_3406.N1	28NOV2010 11:10:09	28NOV2010 12:50:13	0	0	0	0	0
7	MIP_NL__0PNPDK20101128_124900_000059623097_00024_45728_3407.N1	28NOV2010 12:49:00	28NOV2010 14:28:23	0	0	0	0	0
8	MIP_NL__0PNPDK20101128_142732_000059253097_00025_45729_3411.N1	28NOV2010 14:27:32	28NOV2010 16:06:17	0	0	0	0	0
9	MIP_NL__0PNPDK20101128_160519_000059163097_00026_45730_3412.N1	28NOV2010 16:05:19	28NOV2010 17:43:55	1	1	0	0	0
10	MIP_NL__0PNPDK20101128_174214_000060503097_00027_45731_3413.N1	28NOV2010 17:42:14	28NOV2010 19:23:04	0	0	0	0	0
11	MIP_NL__0PNPDK20101128_192149_000060853097_00028_45732_3414.N1	28NOV2010 19:21:49	28NOV2010 21:03:15	0	0	0	0	0
12	MIP_NL__0PNPDE20101128_210113_000043083097_00029_45733_2228.N1	28NOV2010 21:01:13	28NOV2010 22:13:01	0	0	0	0	0
13	MIP_NL__0PNPDE20101128_221203_000061923097_00029_45733_2229.N1	28NOV2010 22:12:03	28NOV2010 23:55:15	0	0	0	0	0
14	MIP_NL__0PNPDE20101128_235406_000058933097_00030_45734_2230.N1	28NOV2010 23:54:06	29NOV2010 01:32:19	0	0	0	0	0

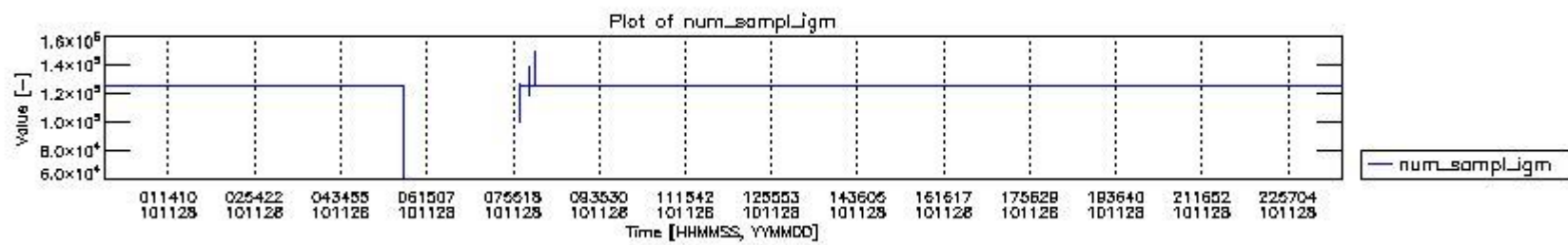
## 0.2 Instrument Operational Performance Parameters

The following plots give an overview of various instrument parameters for this day. The instrument parameters are part of the auxiliary data field within the source packets of the MIP\_NL\_\_0P product. The auxiliary data is normally included twice per interferogram. Note that only the first packet is currently included in monitoring.

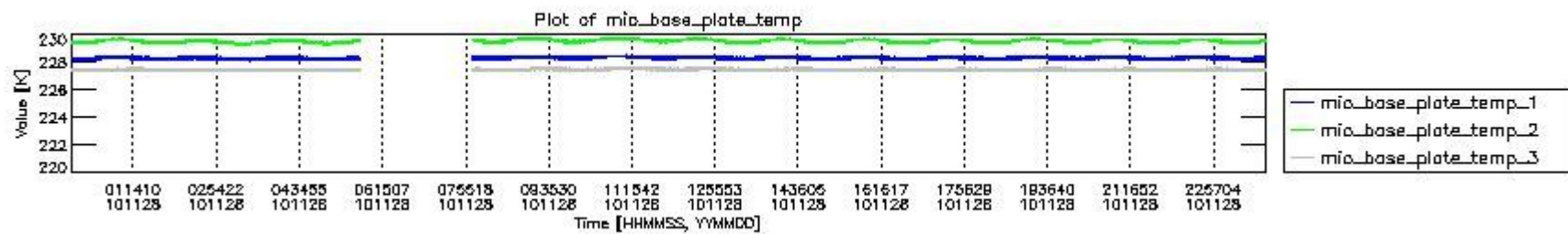
The following table shows the counts of various interferogram number of samples

Number of igm samples	Count [#]	Count [%]
60742	1	0.0026550552
100409	1	0.0026550552
118089	1	0.0026550552

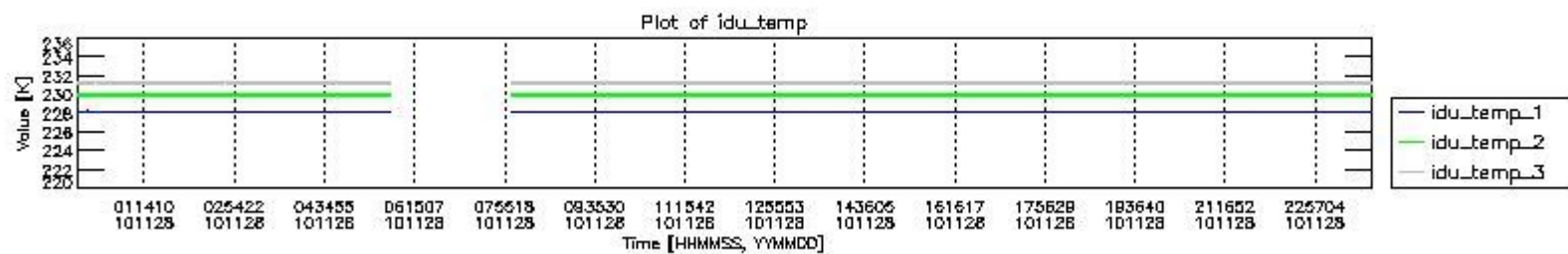
124800	34985	92.887107
124803	2669	7.0863424
125661	1	0.0026550552
126522	1	0.0026550552
127010	1	0.0026550552
131510	1	0.0026550552
138221	1	0.0026550552
147142	1	0.0026550552
149352	1	0.0026550552



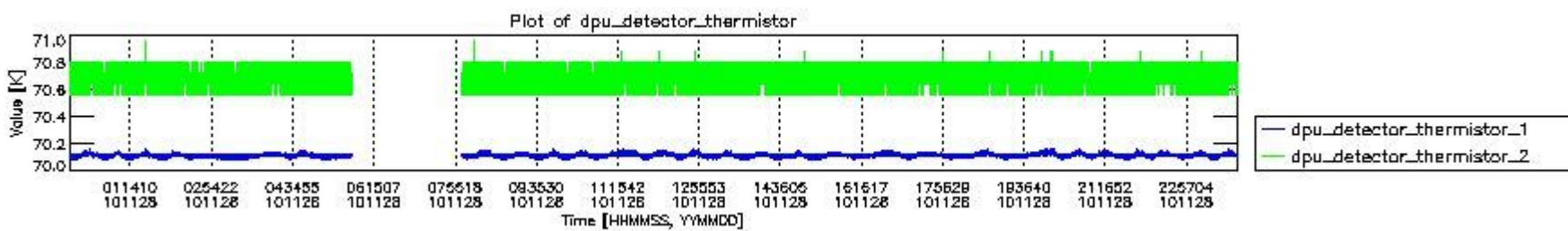
mipas\_daily\_report\_level0\_KSPT\_L0\_4504\_N\_20101128\_0.PNG



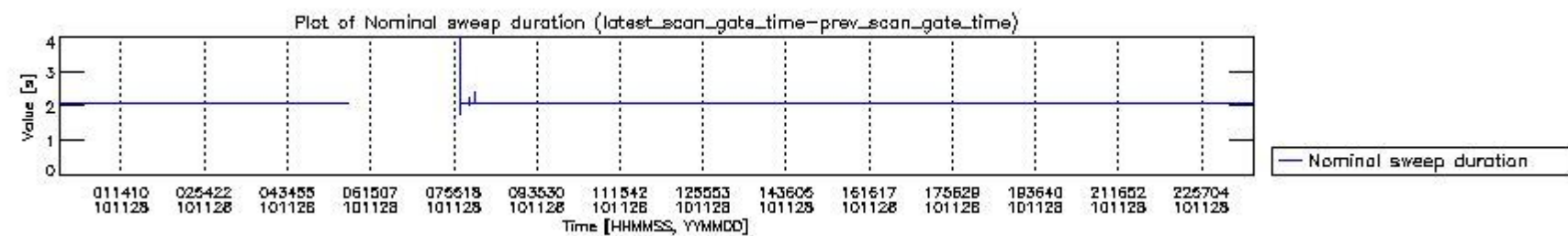
mipas\_daily\_report\_level0\_KSPT\_L0\_4504\_N\_20101128\_1.PNG



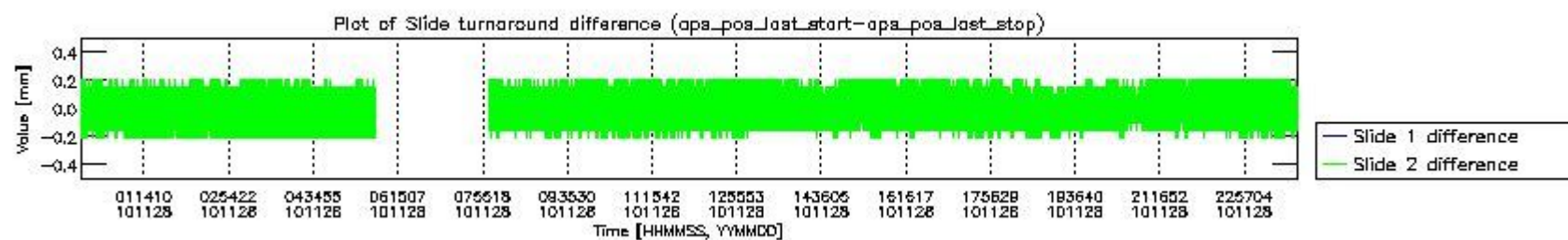
mipas\_daily\_report\_level0\_KSPT\_L0\_4504\_N\_20101128\_2.PNG



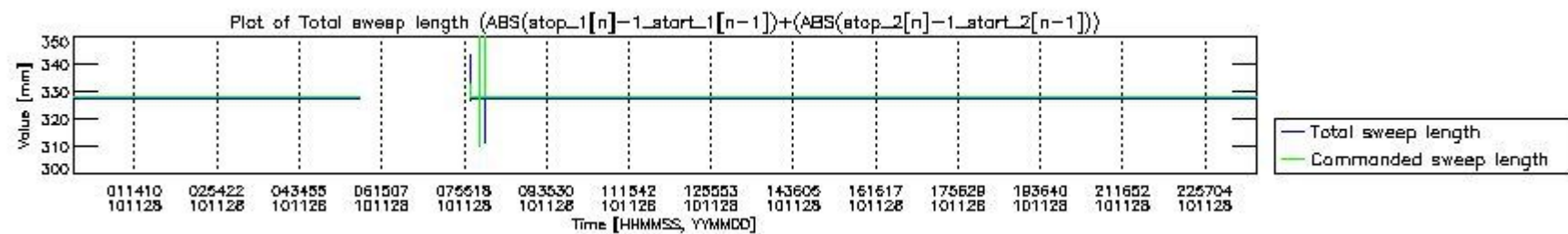
mipas\_daily\_report\_level0\_KSPT\_L0\_4504\_N\_20101128\_3.PNG



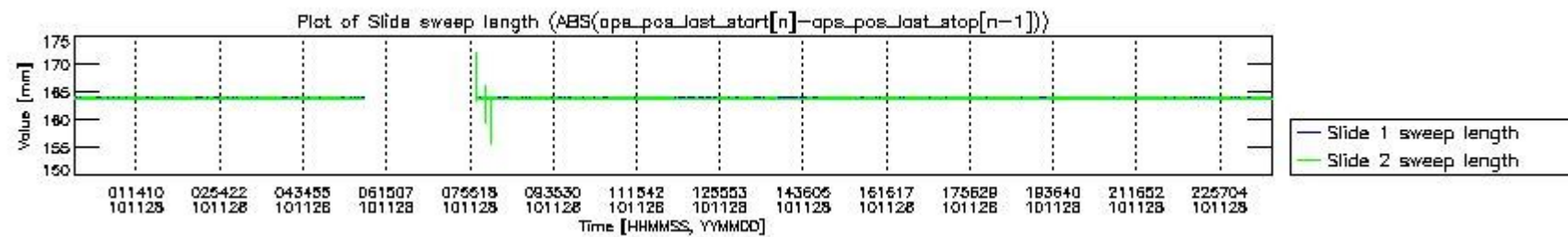
mipas\_daily\_report\_level0\_KSPT\_L0\_4504\_N\_20101128\_4.PNG



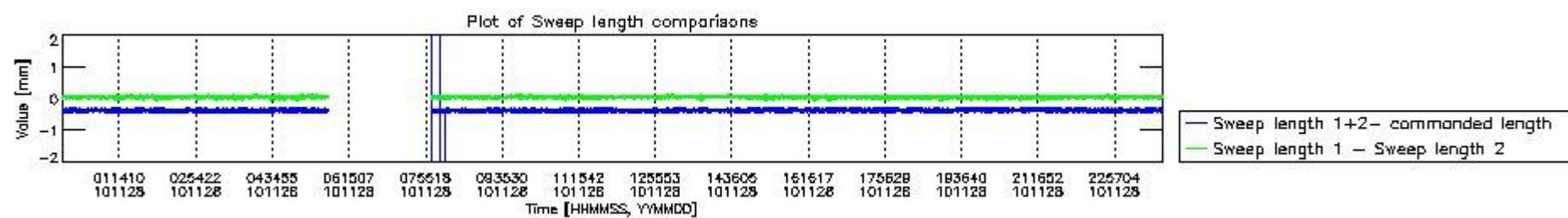
mipas\_daily\_report\_level0\_KSPT\_L0\_4504\_N\_20101128\_5.PNG



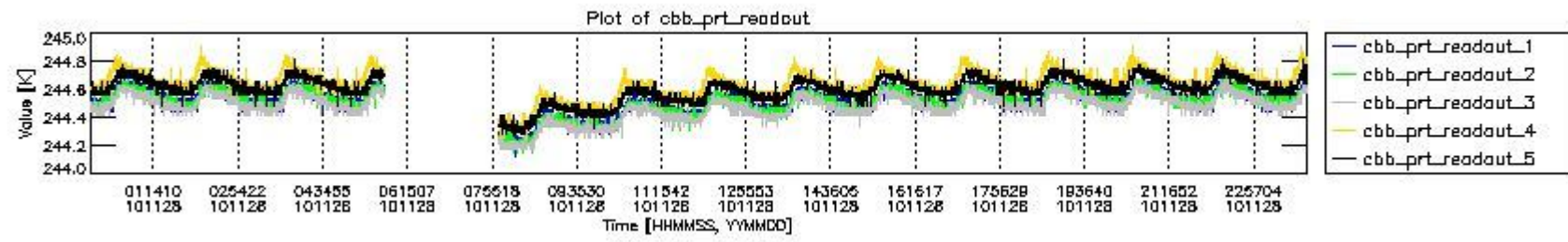
mipas\_daily\_report\_level0\_KSPT\_L0\_4504\_N\_20101128\_6.PNG



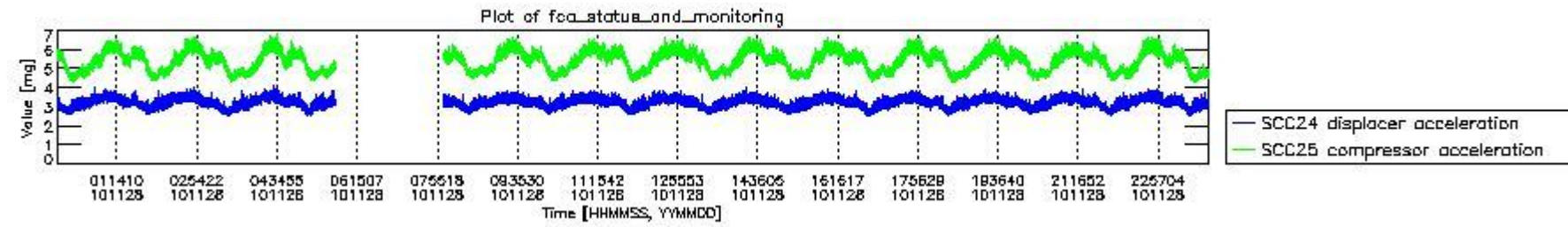
mipas\_daily\_report\_level0\_KSPT\_L0\_4504\_N\_20101128\_7.PNG



mipas\_daily\_report\_level0\_KSPT\_L0\_4504\_N\_20101128\_8.PNG



mipas\_daily\_report\_level0\_KSPT\_L0\_4504\_N\_20101128\_9.PNG



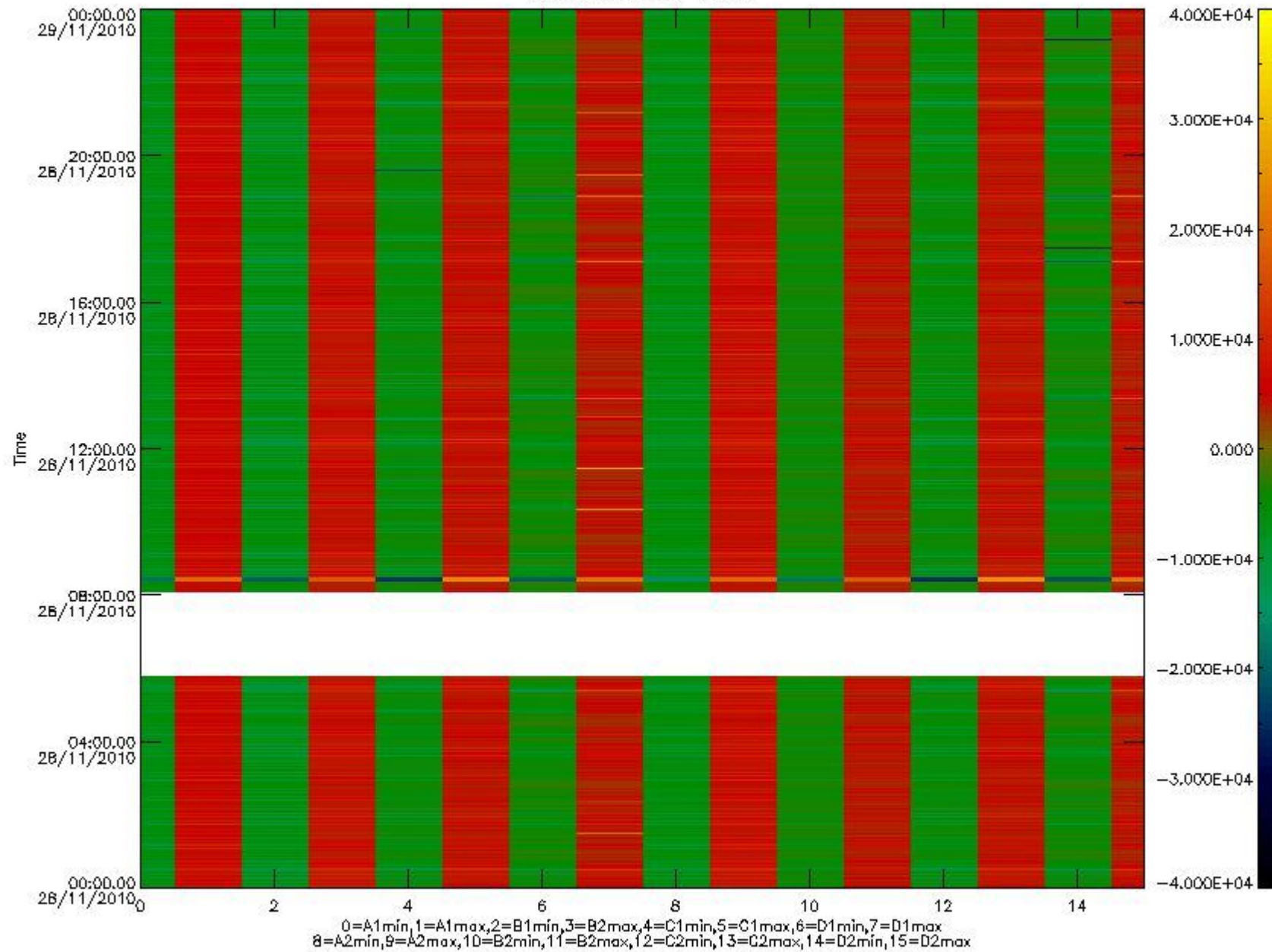
mipas\_daily\_report\_level0\_KSPT\_L0\_4504\_N\_20101128\_10.PNG

The following table shows channel statistics for all channels for this day.

Channel	Min	Max	ADC
A1	-18458	19657	16bit
B1	-20435	17603	16bit
C1	-24697	24712	16bit
D1	-30192	32767	16bit
A2	-15943	19768	16bit
B2	-18534	18159	16bit
C2	-25681	25376	16bit
D2	-32768	32767	16bit



MIPNLOP\_MIPSOUPAC\_aux\_fields\_igm\_cal, channel statistics plot  
Colour indicates value.



mipas\_daily\_report\_level0\_KSPT\_L0\_4504\_N\_20101128\_11.PNG

### 0.3 ADF monitoring

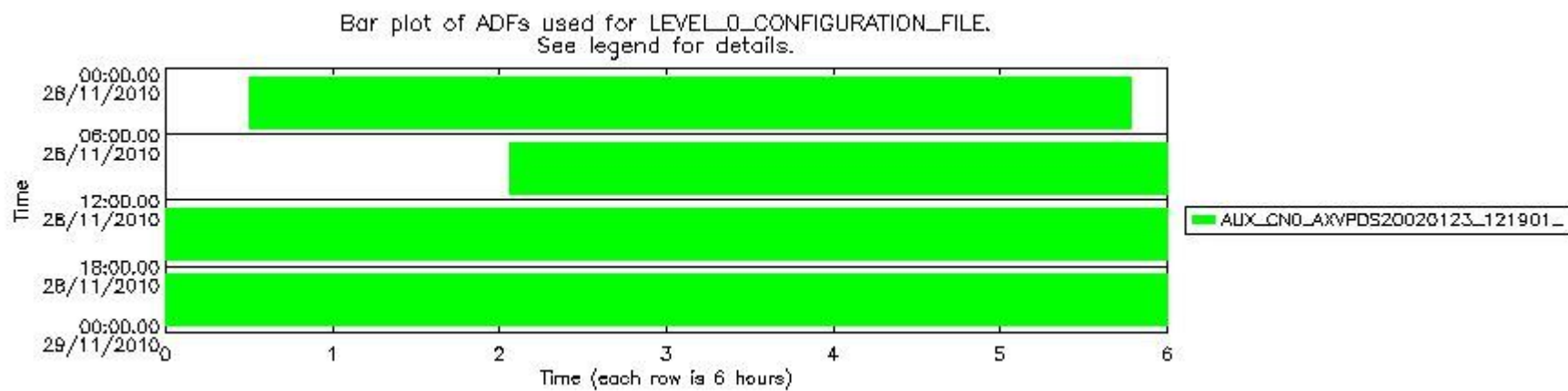
The use of ADFs is shown in two ways:

1. By means of two tables that can be used to find the ADF used for a specific product.
2. By means of plots that show changes in ADF using colours.

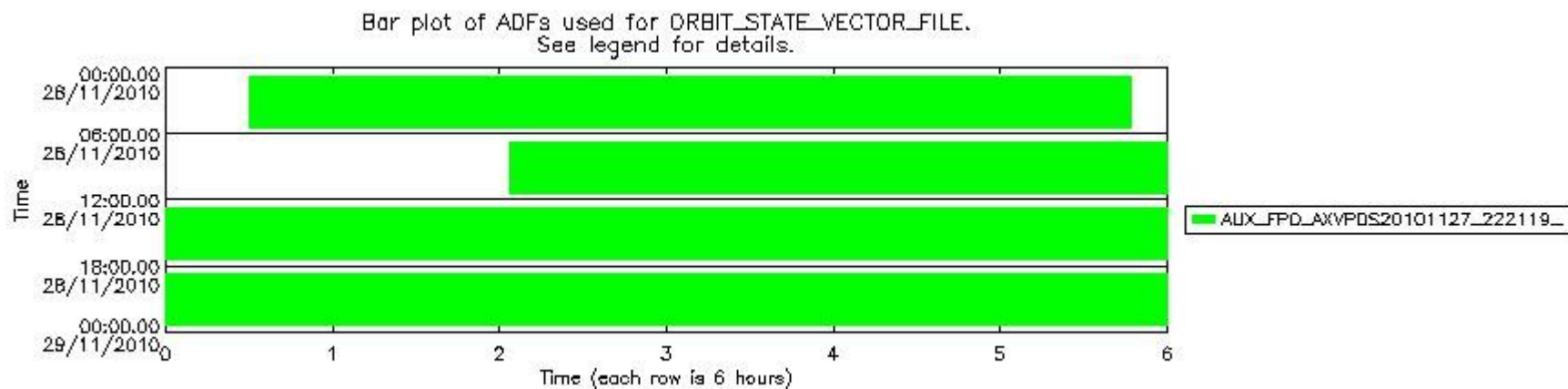
Number	ADF
0	AUX_CN0_AXVPDS20020123_121901_20020101_000000_20200101_000000
1	AUX_FPO_AXVPDS20101127_222119_20101127_194131_20101207_201512

Number	Product name	#CN0	#FPO
0	MIP_NL_0PNPDE20101128_003009_000058473097_00016_45720_2224.N1	0	1

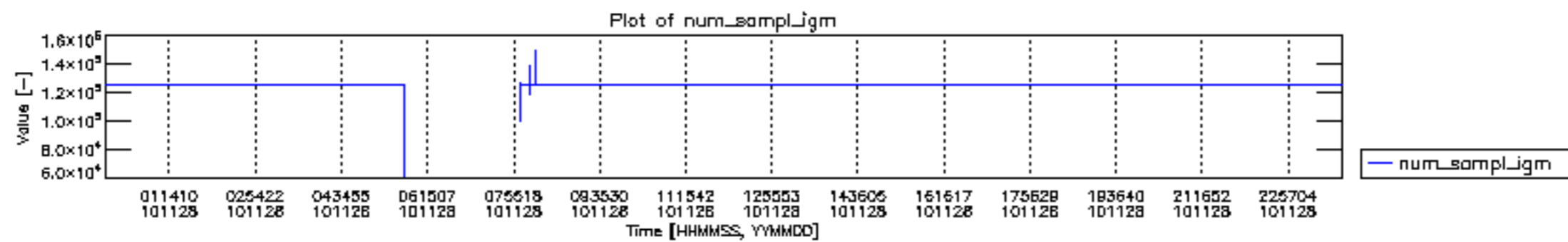
1	MIP_NL__0PNPDE20101128_020621_000045403097_00017_45721_2225.N1	0	1
2	MIP_NL__0PNPDE20101128_032125_000061483097_00018_45722_2226.N1	0	1
3	MIP_NL__0PNPDE20101128_050320_000026223097_00019_45723_2227.N1	0	1
4	MIP_NL__0PNPDK20101128_080348_000053573097_00021_45725_3404.N1	0	1
5	MIP_NL__0PNPDK20101128_093131_000059773097_00022_45726_3405.N1	0	1
6	MIP_NL__0PNPDK20101128_111009_000060043097_00023_45727_3406.N1	0	1
7	MIP_NL__0PNPDK20101128_124900_000059623097_00024_45728_3407.N1	0	1
8	MIP_NL__0PNPDK20101128_142732_000059253097_00025_45729_3411.N1	0	1
9	MIP_NL__0PNPDK20101128_160519_000059163097_00026_45730_3412.N1	0	1
10	MIP_NL__0PNPDK20101128_174214_000060503097_00027_45731_3413.N1	0	1
11	MIP_NL__0PNPDK20101128_192149_000060853097_00028_45732_3414.N1	0	1
12	MIP_NL__0PNPDE20101128_210113_000043083097_00029_45733_2228.N1	0	1
13	MIP_NL__0PNPDE20101128_221203_000061923097_00029_45733_2229.N1	0	1
14	MIP_NL__0PNPDE20101128_235406_000058933097_00030_45734_2230.N1	0	1

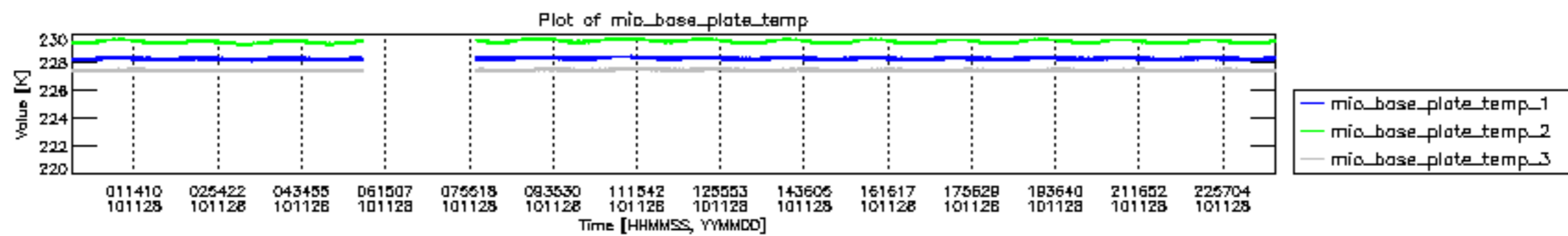


mipas\_daily\_report\_level0\_KSPT\_L0\_4504\_N\_20101128\_12.PNG

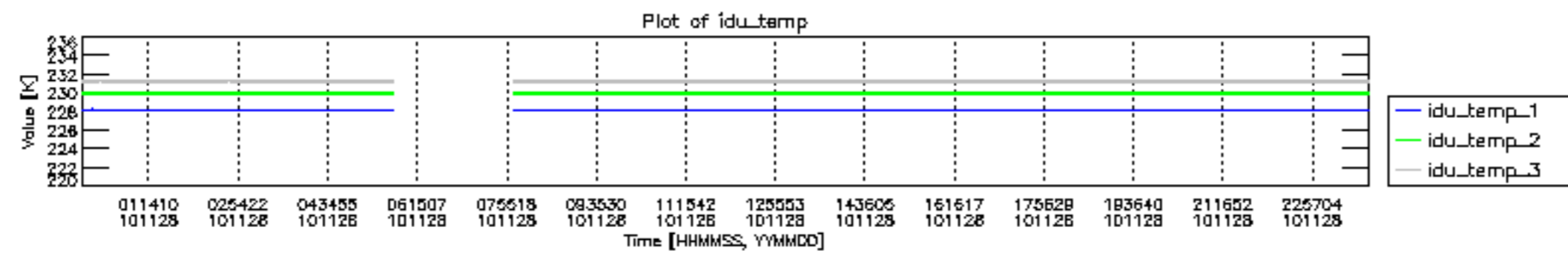


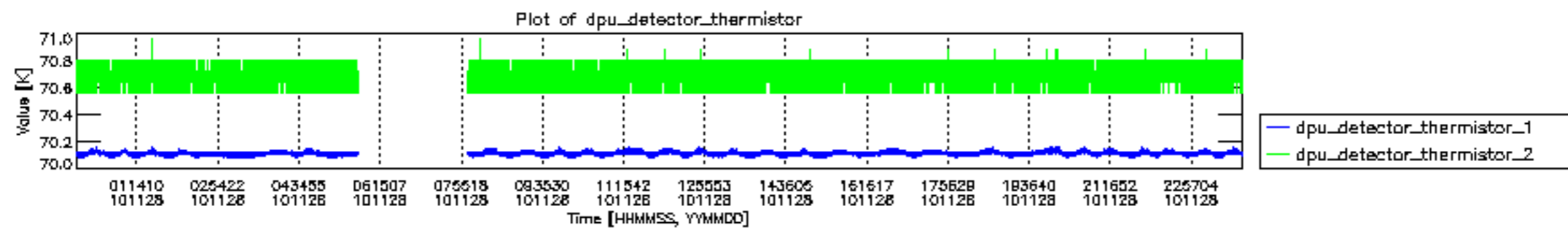
mipas\_daily\_report\_level0\_KSPT\_L0\_4504\_N\_20101128\_13.PNG

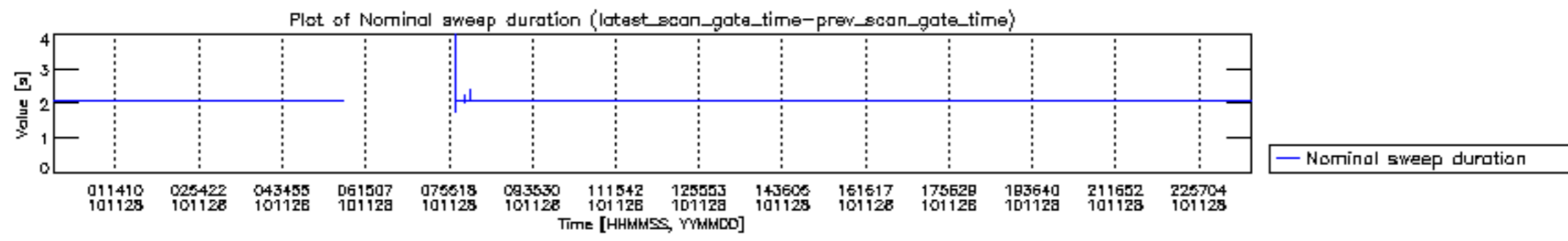


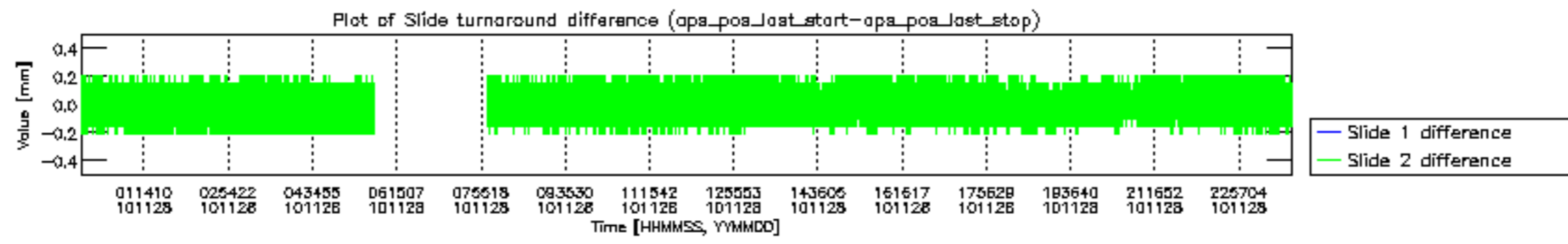


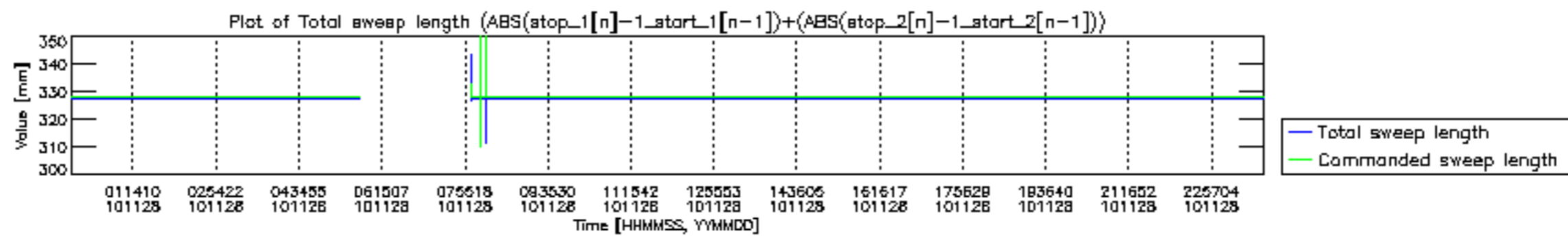




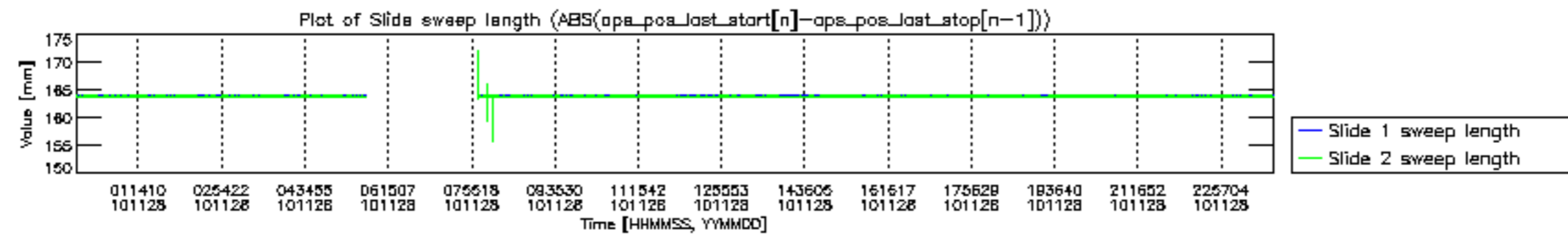


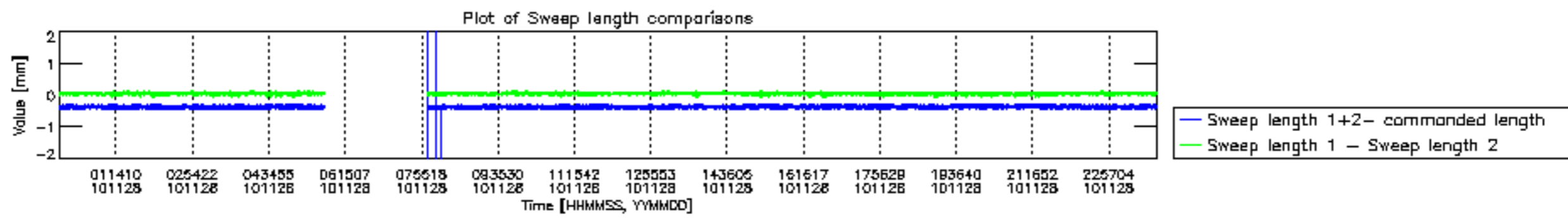


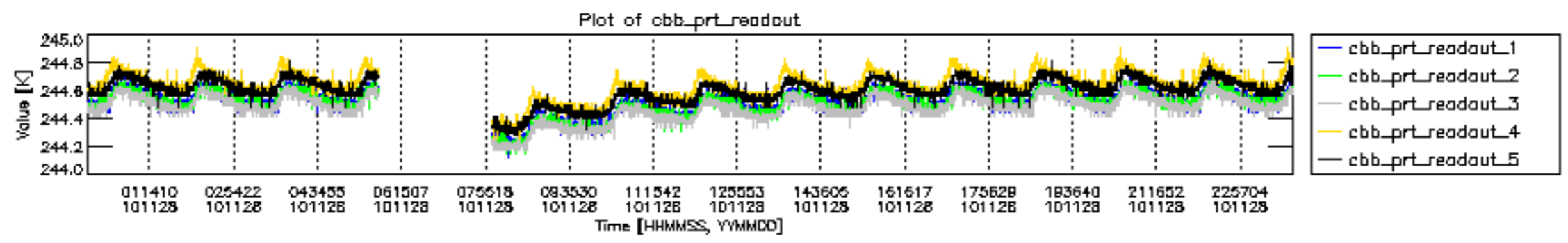


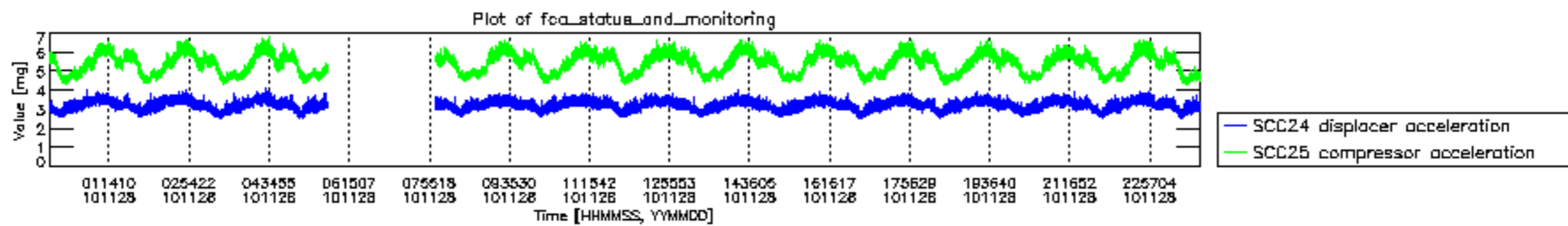












MIPNLOP\_MIPSOUPAC\_aux\_fields\_igm\_cal, channel statistics plot  
 Colour indicates value.

