

0. MIPAS Daily Report for level 0 products

[0.1 General Info](#)

[0.2 Instrument Operational Performance Parameters](#)

[0.3 ADF monitoring](#)

0.1 General Info

This report contains a daily analysis on parameters extracted from MIPAS level 0 data (The MIP_NL__0P product).

0.1.1 Report summary

The table below shows general characteristics of the data that are included into this report.

Item	Value
Report version	v1.6 08-11-2010
Time of report generation	01DEC2010 05:23:22
Data source version	KSPT_L0/4504-N
Processing scope for products	26NOV2010 00:00:00 to 27NOV2010 00:00:00
Start time of first product within scope	26NOV2010 00:02:58
Stop time of last product within scope	27NOV2010 01:07:56
Total number of level 0 products	15
Number of level 0 products with errors	0

0.1.2 Product Quality Indicators per product

The following table shows a summary for each product used in this report.

#	Product name	Start time	Stop time	Prod err	ISP err sign	ISP miss sign	ISP disc sign	rs sign
0	MIP_NL__0PNPDE20101126_000258_000059643096_00418_45691_2212.N1	26NOV2010 00:02:58	26NOV2010 01:42:22	0	0	0	0	0
1	MIP_NL__0PNPDE20101126_014125_000044543096_00419_45692_2214.N1	26NOV2010 01:41:25	26NOV2010 02:55:39	0	0	0	0	0
2	MIP_NL__0PNPDE20101126_025506_000061573096_00420_45693_2215.N1	26NOV2010 02:55:06	26NOV2010 04:37:43	0	0	0	0	0
3	MIP_NL__0PNPDE20101126_043709_000060193096_00421_45694_2216.N1	26NOV2010 04:37:09	26NOV2010 06:17:28	0	0	0	0	0
4	MIP_NL__0PNPDK20101126_061655_000041453096_00422_45695_3378.N1	26NOV2010 06:16:55	26NOV2010 07:26:00	0	0	0	0	0
5	MIP_NL__0PNPDK20101126_072430_000060843096_00423_45696_3379.N1	26NOV2010 07:24:30	26NOV2010 09:05:53	0	0	0	0	0
6	MIP_NL__0PNPDK20101126_090455_000060633096_00424_45697_3380.N1	26NOV2010 09:04:55	26NOV2010 10:45:58	0	0	0	0	0
7	MIP_NL__0PNPDK20101126_104424_000059733096_00425_45698_3381.N1	26NOV2010 10:44:24	26NOV2010 12:23:56	0	0	0	0	0
8	MIP_NL__0PNPDK20101126_122258_000059833096_00426_45699_3382.N1	26NOV2010 12:22:58	26NOV2010 14:02:41	0	0	0	0	0
9	MIP_NL__0PNPDK20101126_140145_000059373096_00427_45700_3383.N1	26NOV2010 14:01:45	26NOV2010 15:40:42	0	0	0	0	0
10	MIP_NL__0PNPDK20101126_154009_000058523096_00428_45701_3384.N1	26NOV2010 15:40:09	26NOV2010 17:17:40	0	0	0	0	0
11	MIP_NL__0PNPDK20101126_171640_000059503096_00429_45702_3385.N1	26NOV2010 17:16:40	26NOV2010 18:55:50	0	0	0	0	0
12	MIP_NL__0PNPDK20101126_185441_000060383096_00430_45703_3386.N1	26NOV2010 18:54:41	26NOV2010 20:35:18	0	0	0	0	0
13	MIP_NL__0PNPDE20101126_214456_000062443096_00431_45704_2217.N1	26NOV2010 21:44:56	26NOV2010 23:29:01	0	0	0	0	0
14	MIP_NL__0PNPDE20101126_232752_000060043097_00001_45705_2218.N1	26NOV2010 23:27:52	27NOV2010 01:07:56	0	0	0	0	0

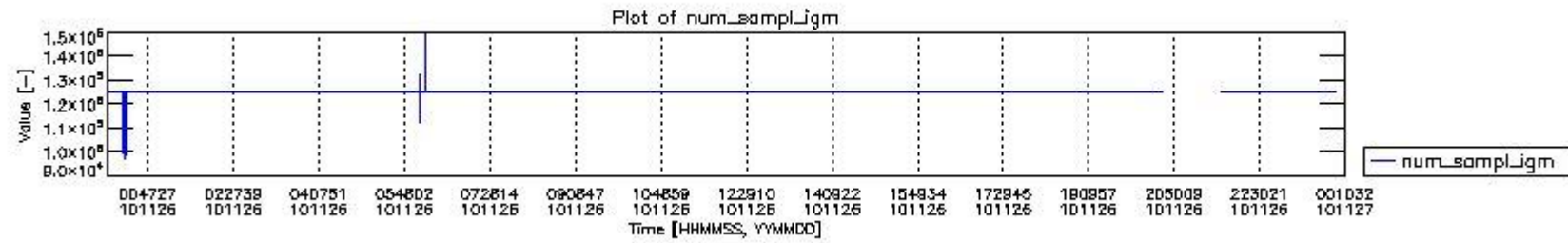
0.2 Instrument Operational Performance Parameters

The following plots give an overview of various instrument parameters for this day. The instrument parameters are part of the auxiliary data field within the source packets of the MIP_NL__0P product. The auxiliary data is normally included twice per interferogram. Note that only the first packet is currently included in monitoring.

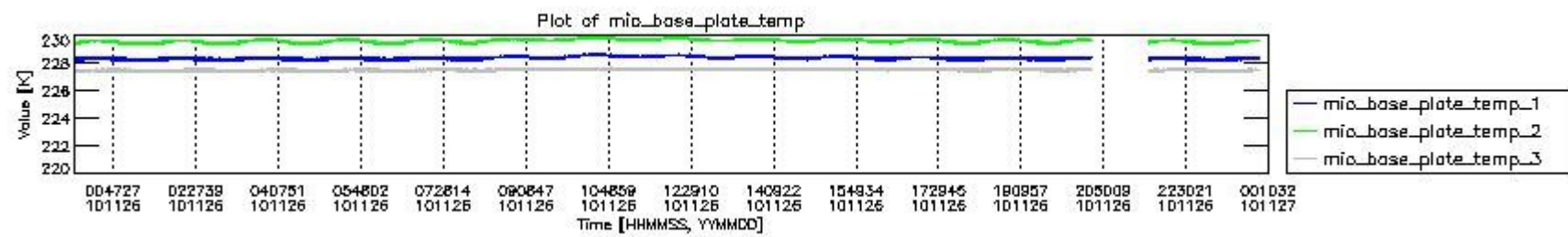
The following table shows the counts of various interferogram number of samples

Number of igm samples	Count [#]	Count [%]
96868	1	0.0025369764
98699	1	0.0025369764
100768	1	0.0025369764

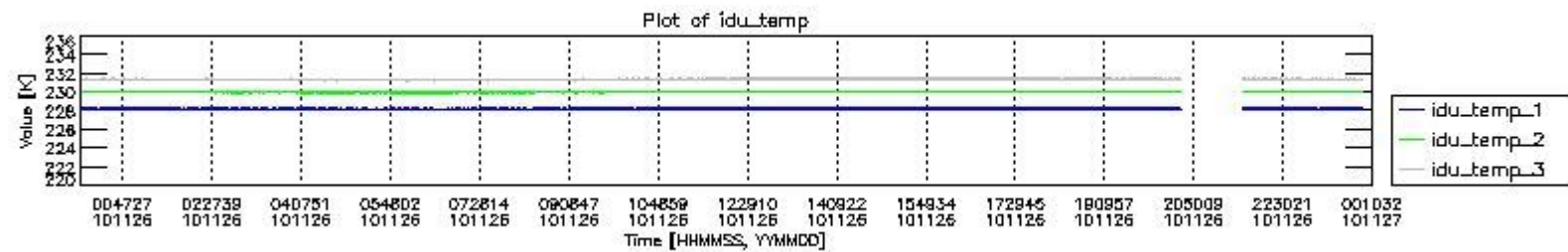
112068	1	0.0025369764
119468	1	0.0025369764
120900	1	0.0025369764
123102	1	0.0025369764
123951	1	0.0025369764
124800	36615	92.891392
124803	2790	7.0781642
126862	1	0.0025369764
132200	1	0.0025369764
146994	1	0.0025369764
149056	1	0.0025369764



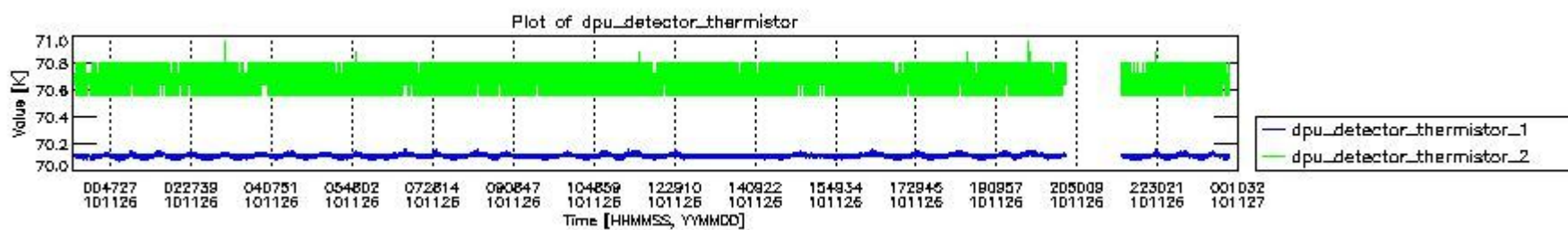
mipas_daily_report_level0_KSPT_L0_4504_N_20101126_0.PNG



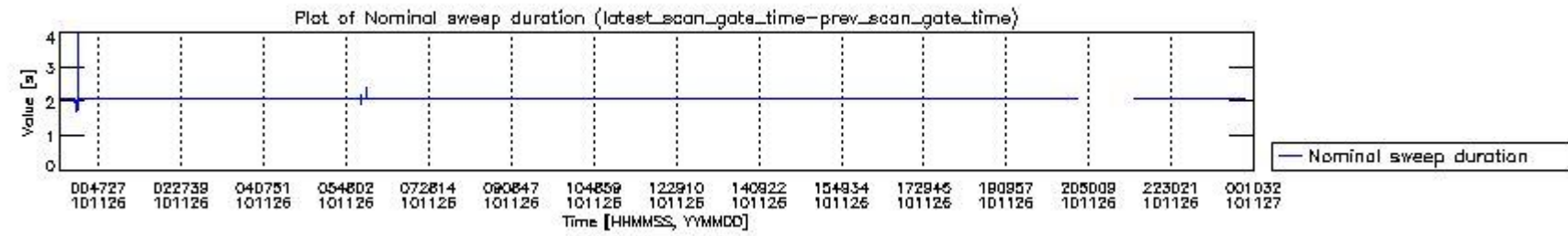
mipas_daily_report_level0_KSPT_L0_4504_N_20101126_1.PNG



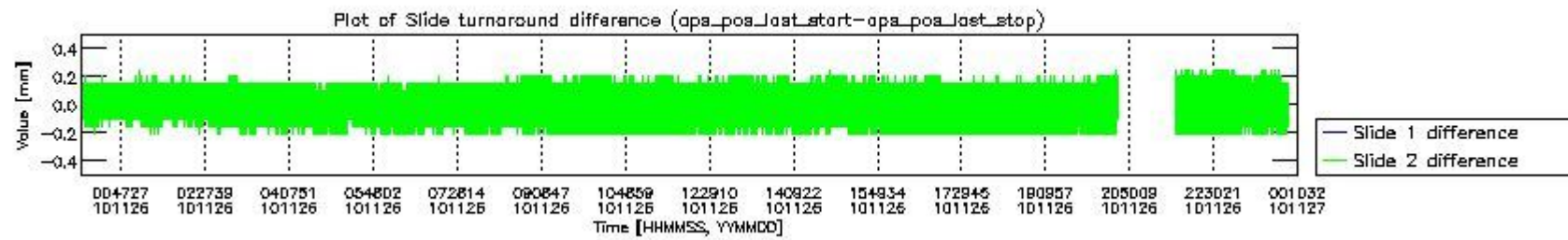
mipas_daily_report_level0_KSPT_L0_4504_N_20101126_2.PNG



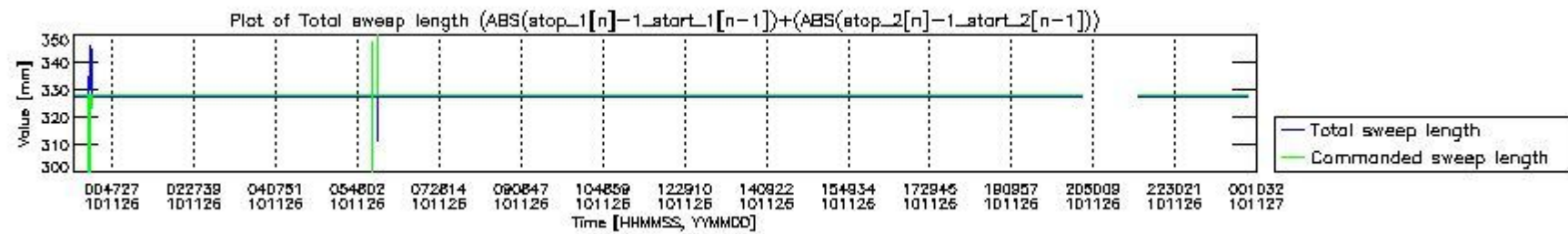
mipas_daily_report_level0_KSPT_L0_4504_N_20101126_3.PNG



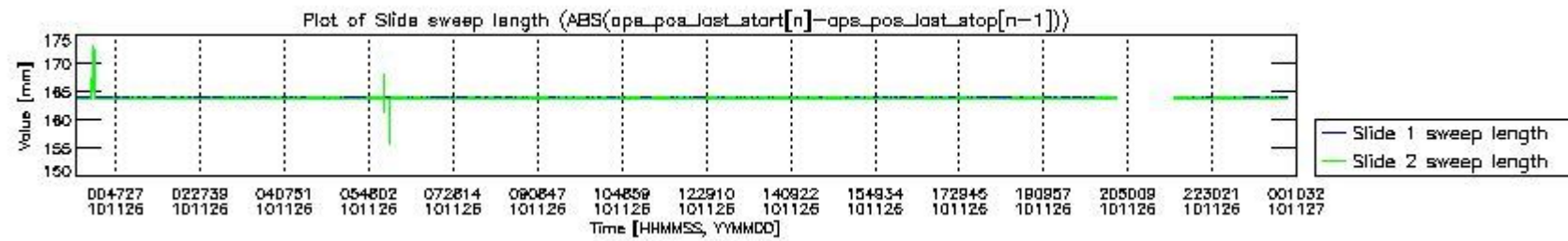
mipas_daily_report_level0_KSPT_L0_4504_N_20101126_4.PNG



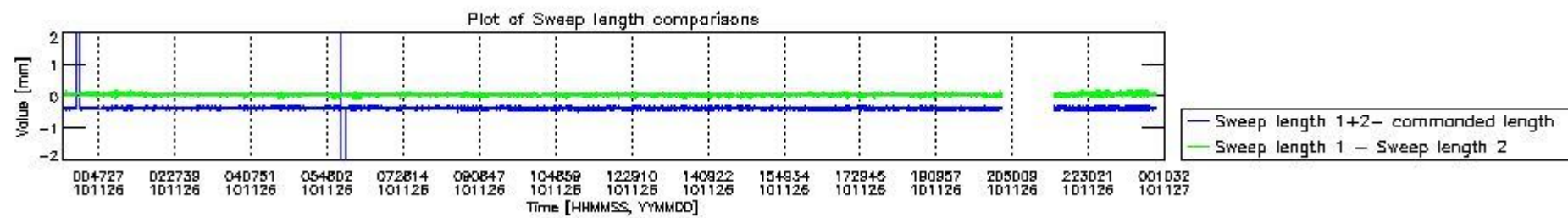
mipas_daily_report_level0_KSPT_L0_4504_N_20101126_5.PNG



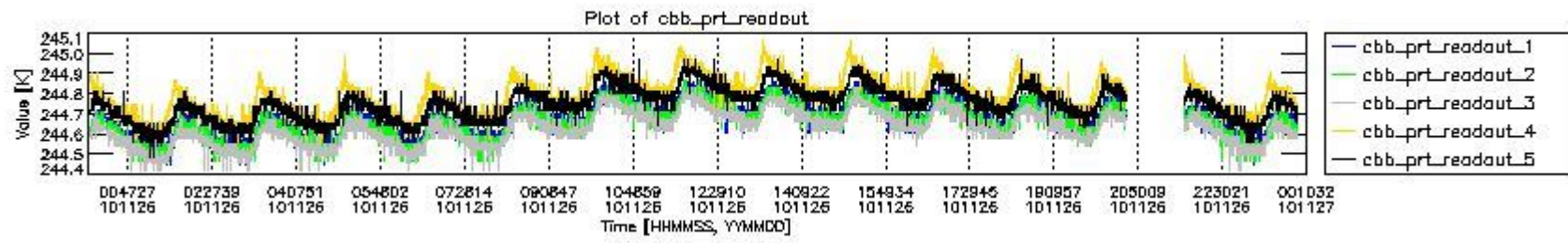
mipas_daily_report_level0_KSPT_L0_4504_N_20101126_6.PNG



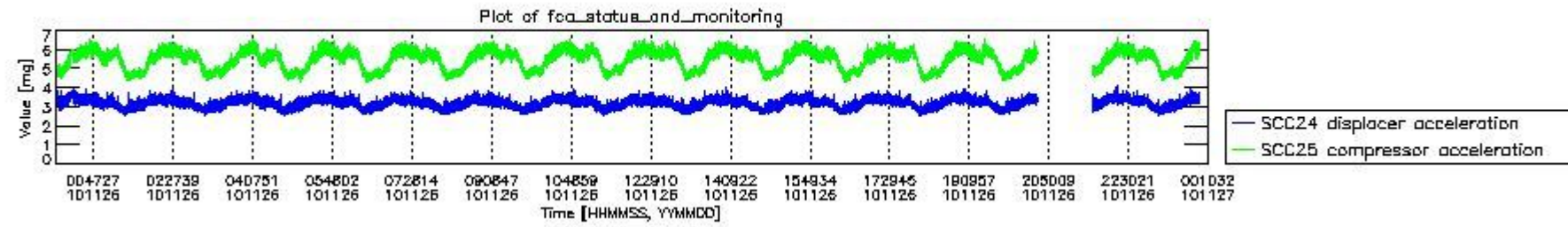
mipas_daily_report_level0_KSPT_L0_4504_N_20101126_7.PNG



mipas_daily_report_level0_KSPT_L0_4504_N_20101126_8.PNG



mipas_daily_report_level0_KSPT_L0_4504_N_20101126_9.PNG

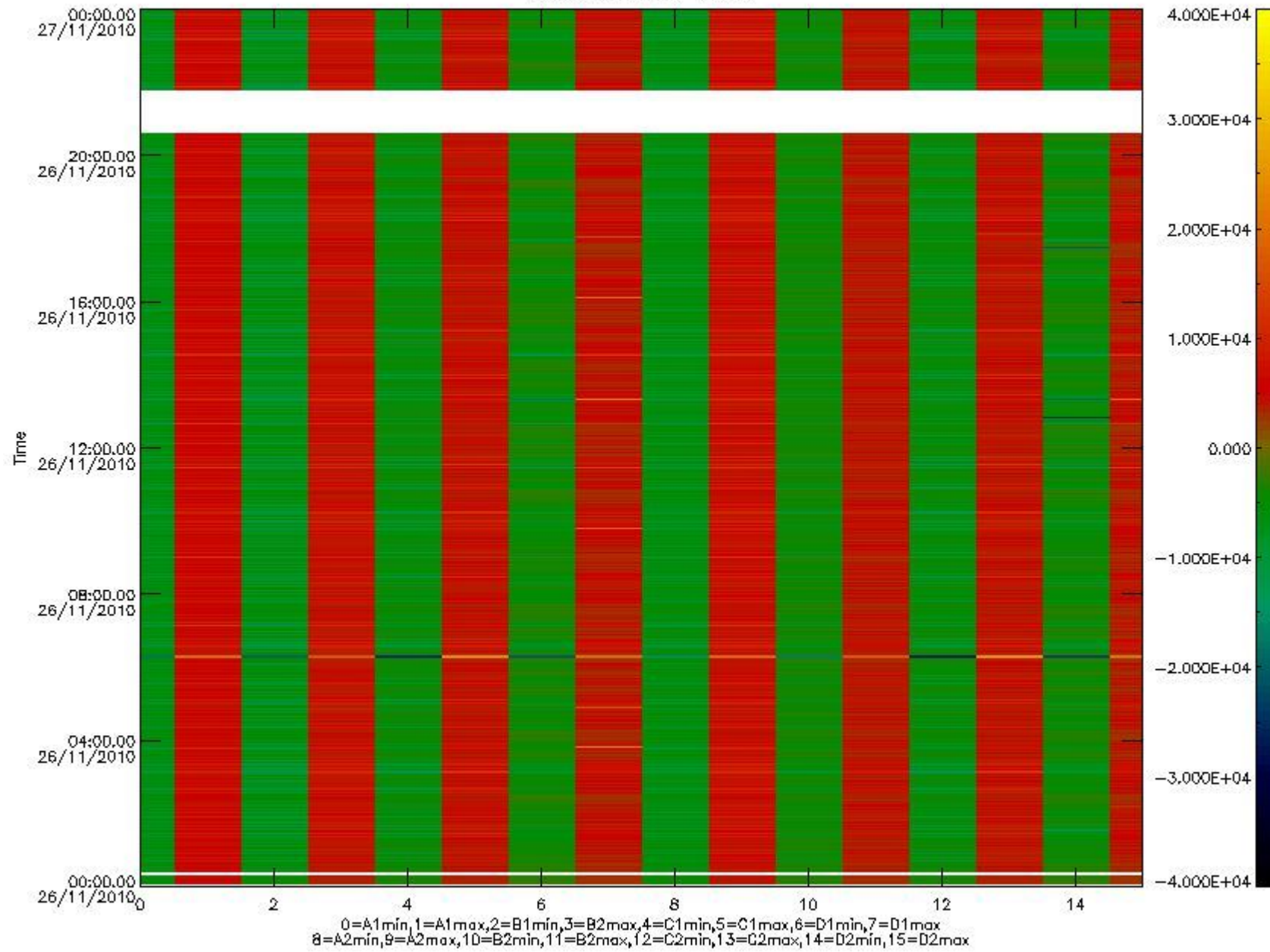


mipas_daily_report_level0_KSPT_L0_4504_N_20101126_10.PNG

The following table shows channel statistics for all channels for this day.

Channel	Min	Max	ADC
A1	-18550	19744	16bit
B1	-20578	17692	16bit
C1	-24984	24916	16bit
D1	-32768	32767	16bit
A2	-16022	19858	16bit
B2	-18683	18281	16bit
C2	-25948	25623	16bit
D2	-32768	32767	16bit

MIPNLOP_MIPSOUPAC_aux_fields_igm_cal, channel statistics plot
Colour indicates value.



mipas_daily_report_level0_KSPT_L0_4504_N_20101126_11.PNG

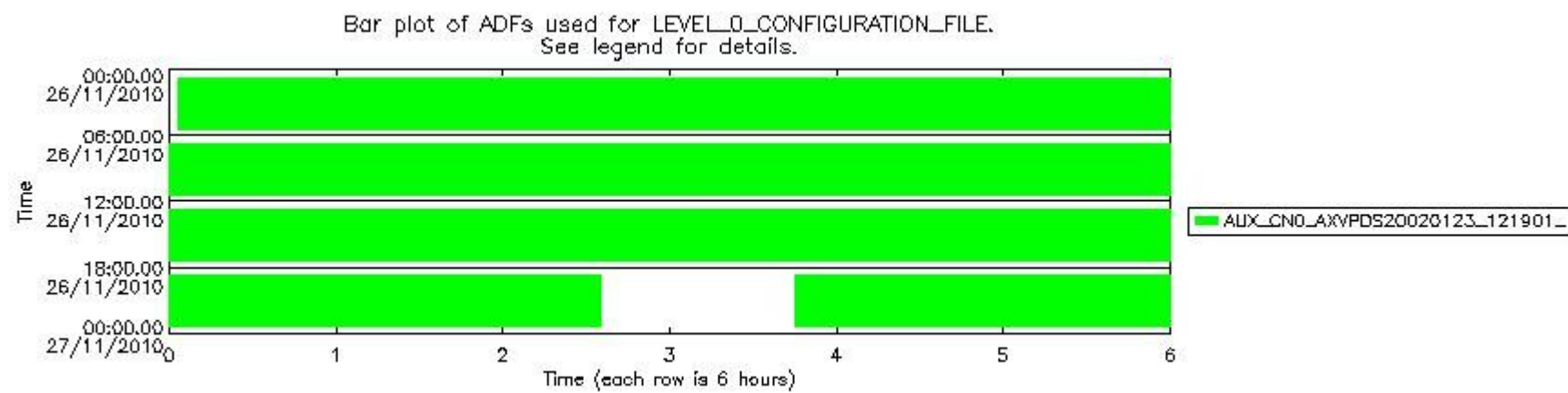
0.3 ADF monitoring

The use of ADFs is shown in two ways:

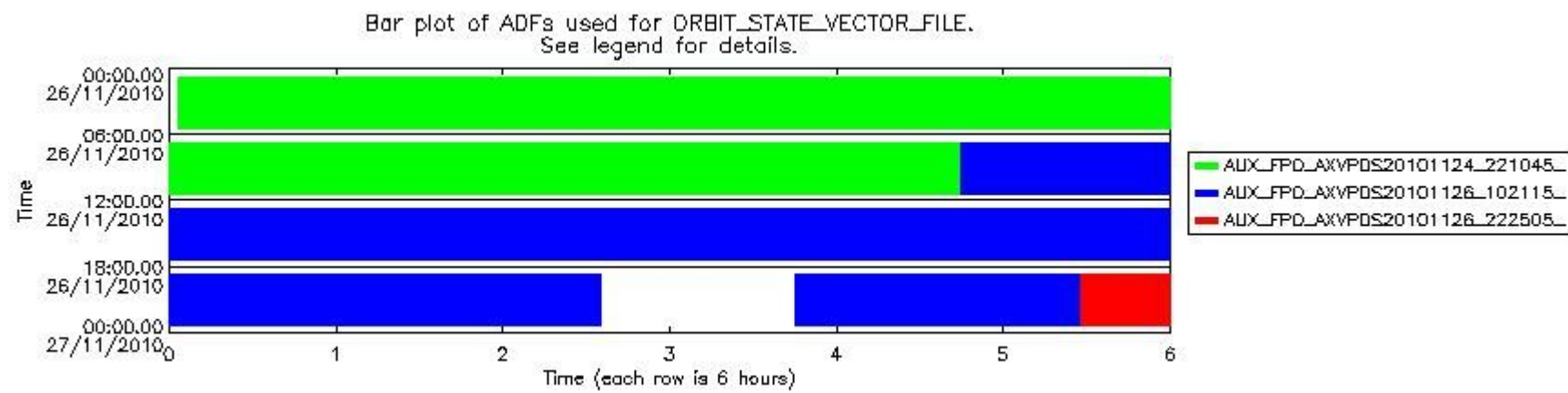
1. By means of two tables that can be used to find the ADF used for a specific product.
2. By means of plots that show changes in ADF using colours.

Number	ADF
0	AUX_CN0_AXVPDS20020123_121901_20020101_000000_20200101_000000
1	AUX_FPO_AXVPDS20101124_221045_20101124_195128_20101204_202509
2	AUX_FPO_AXVPDS20101126_102115_20101125_191444_20101205_212839
3	AUX_FPO_AXVPDS20101126_222505_20101126_183801_20101206_205156

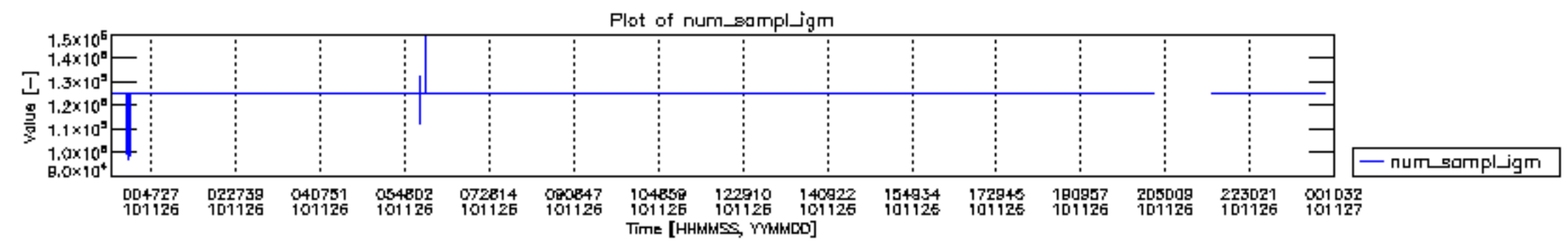
Number	Product name	#CNO	#FPO
0	MIP_NL__0PNPDE20101126_000258_000059643096_00418_45691_2212.N1	0	1
1	MIP_NL__0PNPDE20101126_014125_000044543096_00419_45692_2214.N1	0	1
2	MIP_NL__0PNPDE20101126_025506_000061573096_00420_45693_2215.N1	0	1
3	MIP_NL__0PNPDE20101126_043709_000060193096_00421_45694_2216.N1	0	1
4	MIP_NL__0PNPDK20101126_061655_000041453096_00422_45695_3378.N1	0	1
5	MIP_NL__0PNPDK20101126_072430_000060843096_00423_45696_3379.N1	0	1
6	MIP_NL__0PNPDK20101126_090455_000060633096_00424_45697_3380.N1	0	1
7	MIP_NL__0PNPDK20101126_104424_000059733096_00425_45698_3381.N1	0	2
8	MIP_NL__0PNPDK20101126_122258_000059833096_00426_45699_3382.N1	0	2
9	MIP_NL__0PNPDK20101126_140145_000059373096_00427_45700_3383.N1	0	2
10	MIP_NL__0PNPDK20101126_154009_000058523096_00428_45701_3384.N1	0	2
11	MIP_NL__0PNPDK20101126_171640_000059503096_00429_45702_3385.N1	0	2
12	MIP_NL__0PNPDK20101126_185441_000060383096_00430_45703_3386.N1	0	2
13	MIP_NL__0PNPDE20101126_214456_000062443096_00431_45704_2217.N1	0	2
14	MIP_NL__0PNPDE20101126_232752_000060043097_00001_45705_2218.N1	0	3

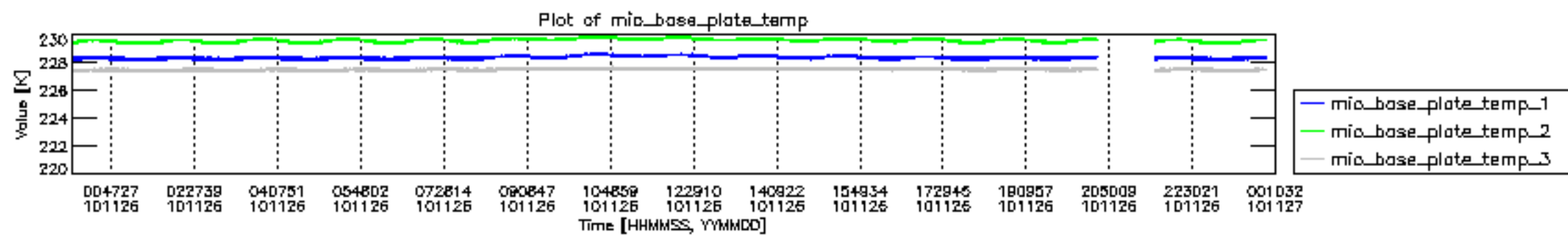


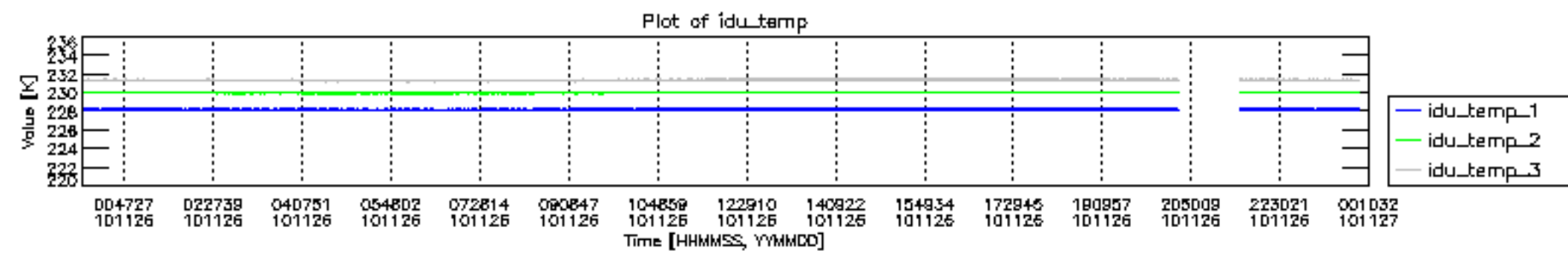
mipas_daily_report_level0_KSPT_L0_4504_N_20101126_12.PNG

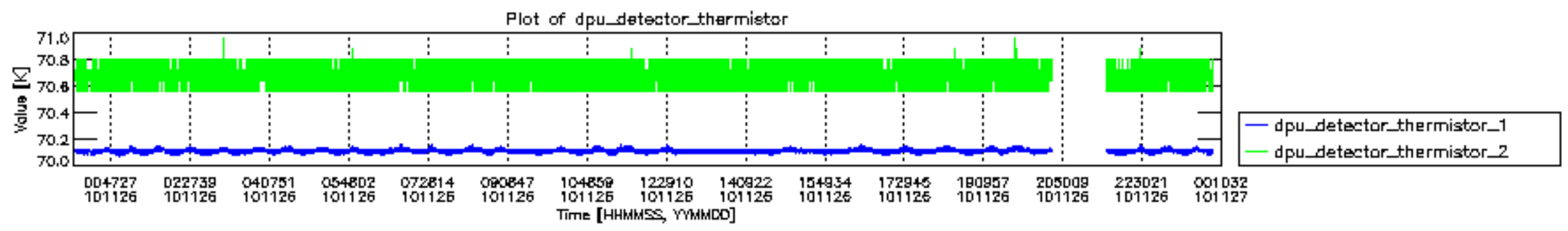


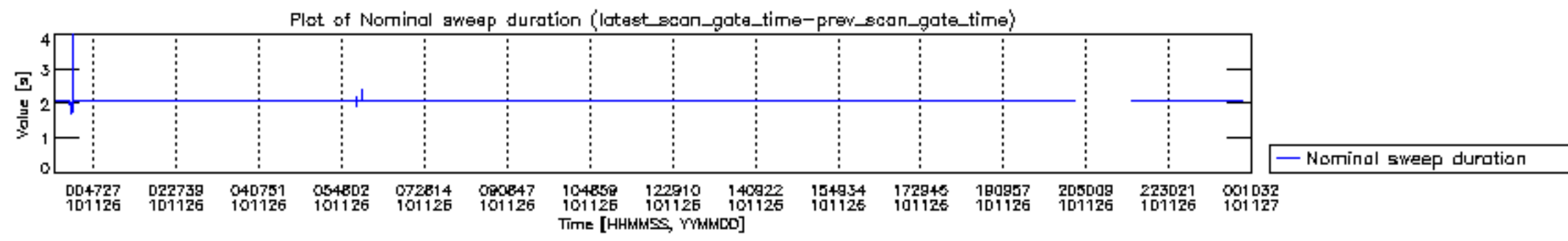
mipas_daily_report_level0_KSPT_L0_4504_N_20101126_13.PNG

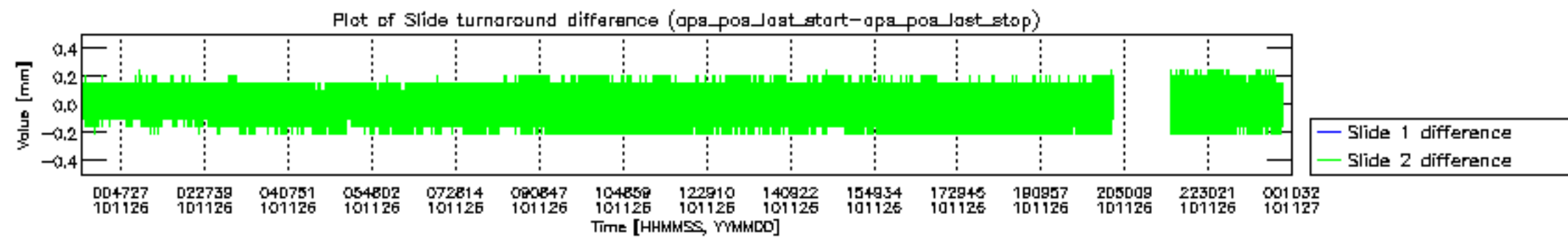


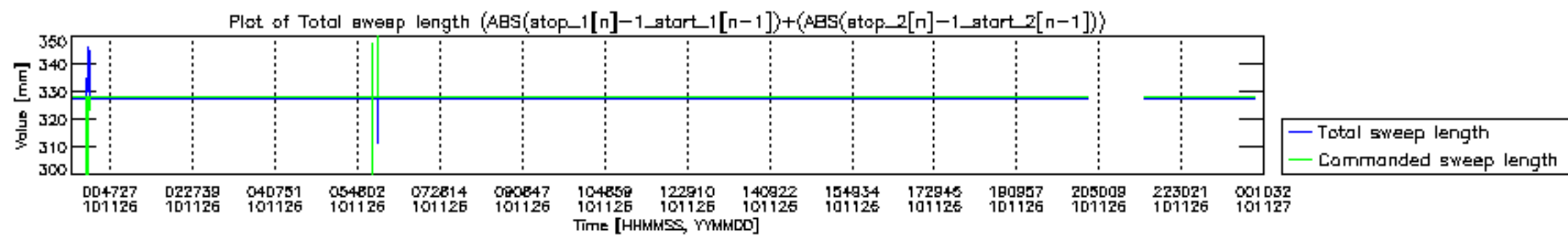


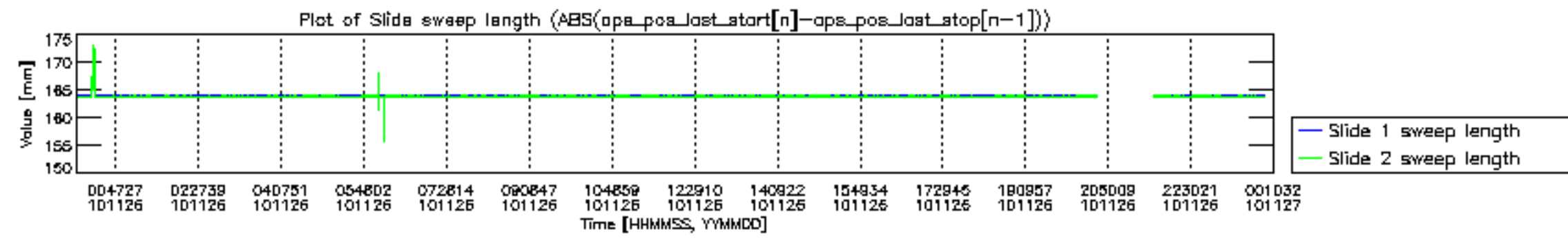


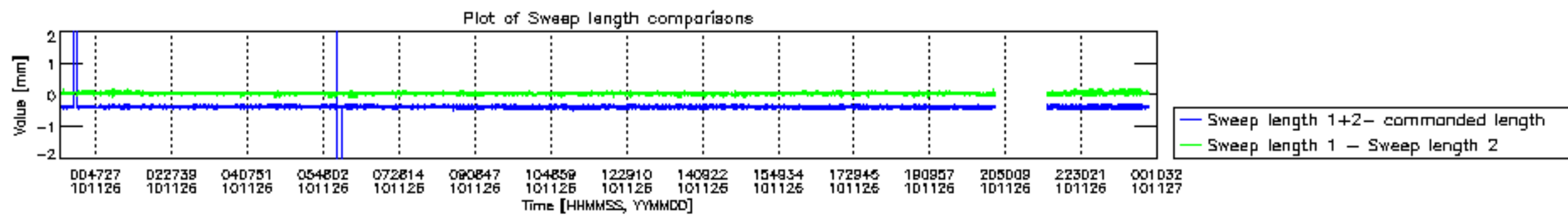


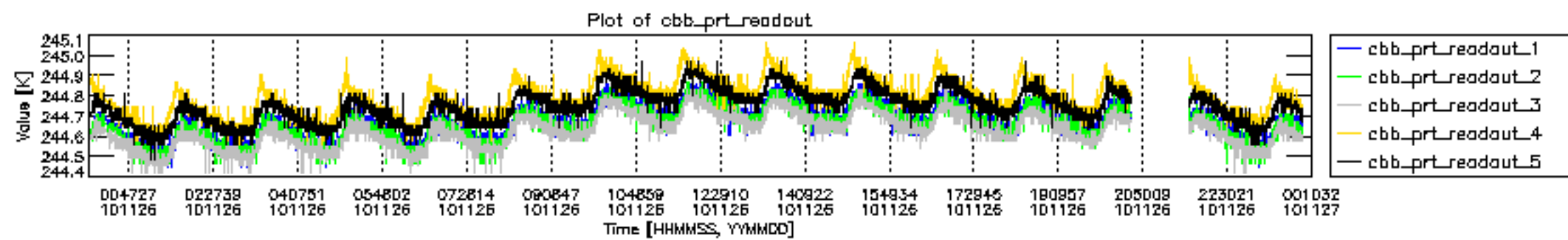


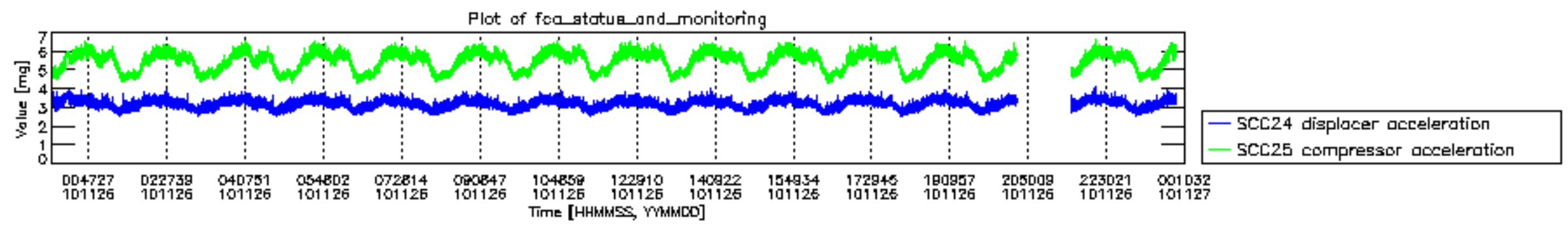






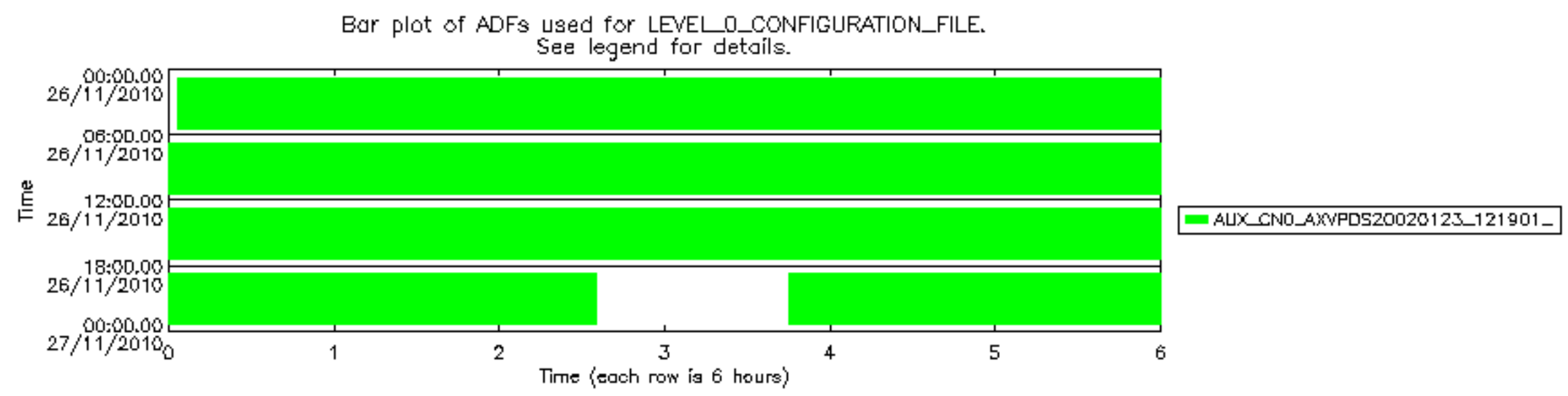






MIPNLOP_MIPSOUPAC_aux_fields_igm_cal, channel statistics plot
 Colour indicates value.





Bar plot of ADFs used for ORBIT_STATE_VECTOR_FILE.
See legend for details.

