

## 0. MIPAS Daily Report for level 0 products

### [0.1 General Info](#)

### [0.2 Instrument Operational Performance Parameters](#)

### [0.3 ADF monitoring](#)

## 0.1 General Info

This report contains a daily analysis on parameters extracted from MIPAS level 0 data (The MIP\_NL\_\_0P product).

### 0.1.1 Report summary

The table below shows general characteristics of the data that are included into this report.

Item	Value
Report version	v1.6 08-11-2010
Time of report generation	27NOV2010 05:26:56
Data source version	KSPT_L0/4504-N
Processing scope for products	22NOV2010 00:00:00 to 23NOV2010 00:00:00
Start time of first product within scope	22NOV2010 00:50:46
Stop time of last product within scope	23NOV2010 00:15:14
Total number of level 0 products	15
Number of level 0 products with errors	1

### 0.1.2 Product Quality Indicators per product

The following table shows a summary for each product used in this report.

#	Product name	Start time	Stop time	Prod err	ISP err sign	ISP miss sign	ISP disc sign	rs sign
0	MIP_NL__0PNPDE20101122_005046_000055073096_00361_45634_2067.N1	22NOV2010 00:50:46	22NOV2010 02:22:33	0	0	0	0	0
1	MIP_NL__0PNPDE20101122_022026_000047383096_00362_45635_2068.N1	22NOV2010 02:20:26	22NOV2010 03:39:24	0	0	0	0	0
2	MIP_NL__0PNPDE20101122_033846_000062763096_00363_45636_2069.N1	22NOV2010 03:38:46	22NOV2010 05:23:22	0	0	0	0	0
3	MIP_NL__0PNPDE20101122_052244_000060073096_00364_45637_2070.N1	22NOV2010 05:22:44	22NOV2010 07:02:51	0	0	0	0	0
4	MIP_NL__0PNPDK20101122_070214_000040303096_00365_45638_3341.N1	22NOV2010 07:02:14	22NOV2010 08:09:24	0	0	0	0	0
5	MIP_NL__0PNPDK20101122_094810_000060503096_00367_45640_3343.N1	22NOV2010 09:48:10	22NOV2010 11:29:01	0	0	0	0	0
6	MIP_NL__0PNPDK20101122_112756_000061193096_00368_45641_3344.N1	22NOV2010 11:27:56	22NOV2010 13:09:55	0	0	0	0	0
7	MIP_NL__0PNPDK20101122_130854_000060233096_00369_45642_3345.N1	22NOV2010 13:08:54	22NOV2010 14:49:17	0	0	0	0	0
8	MIP_NL__0PNPDK20101122_144819_000058963096_00370_45643_3346.N1	22NOV2010 14:48:19	22NOV2010 16:26:34	0	0	0	0	0
9	MIP_NL__0PNPDK20101122_162601_000058543096_00371_45644_3350.N1	22NOV2010 16:26:01	22NOV2010 18:03:34	1	1	0	0	0
10	MIP_NL__0PNPDK20101122_163240_000054553096_00371_45644_3348.N1	22NOV2010 16:32:40	22NOV2010 18:03:34	0	0	0	0	0
11	MIP_NL__0PNPDK20101122_180234_000060173096_00372_45645_3349.N1	22NOV2010 18:02:34	22NOV2010 19:42:51	0	0	0	0	0
12	MIP_NL__0PNPDE20101122_194144_000040683096_00373_45646_2071.N1	22NOV2010 19:41:44	22NOV2010 20:49:31	0	0	0	0	0
13	MIP_NL__0PNPDE20101122_204755_000063573096_00373_45646_2072.N1	22NOV2010 20:47:55	22NOV2010 22:33:52	0	0	0	0	0
14	MIP_NL__0PNPDE20101122_223246_000061483096_00374_45647_2073.N1	22NOV2010 22:32:46	23NOV2010 00:15:14	0	0	0	0	0

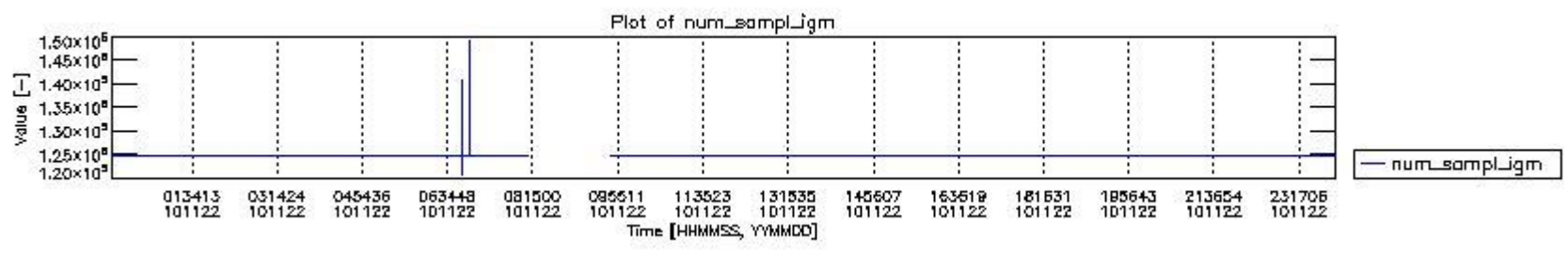
## 0.2 Instrument Operational Performance Parameters

The following plots give an overview of various instrument parameters for this day. The instrument parameters are part of the auxiliary data field within the source packets of the MIP\_NL\_\_0P product. The auxiliary data is normally included twice per interferogram. Note that only the first packet is currently included in monitoring.

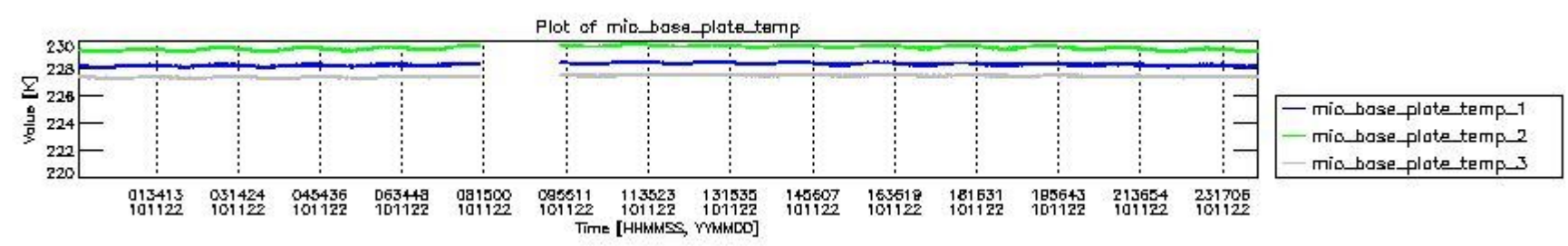
The following table shows the counts of various interferogram number of samples

Number of igm samples	Count [#]	Count [%]
120617	1	0.0025822445
124800	35971	92.885916
124803	2749	7.0985901

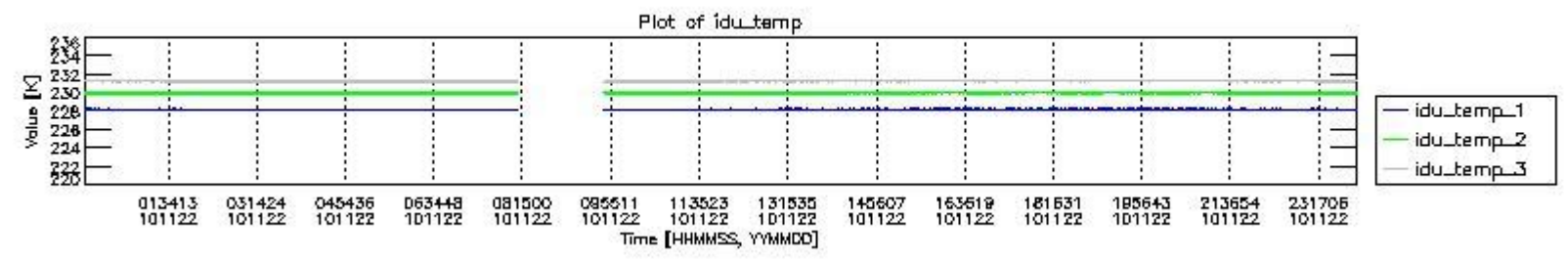
126936	1	0.0025822445
136566	1	0.0025822445
140749	1	0.0025822445
147068	1	0.0025822445
149204	1	0.0025822445



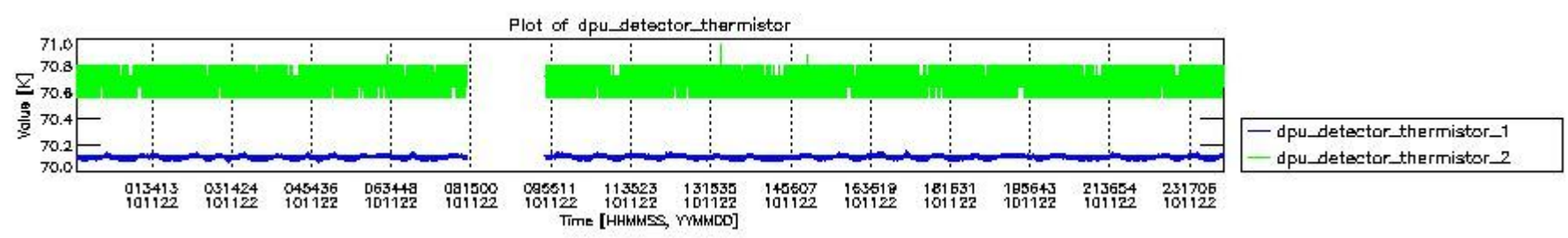
mipas\_daily\_report\_level0\_KSPT\_L0\_4504\_N\_20101122\_0.PNG



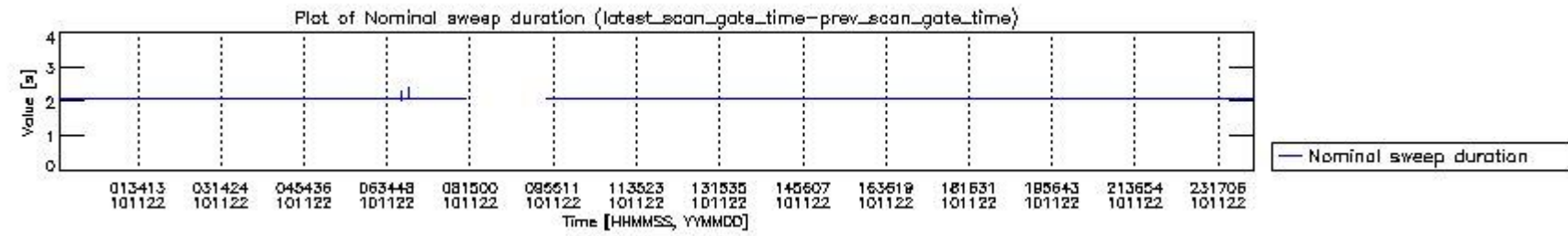
mipas\_daily\_report\_level0\_KSPT\_L0\_4504\_N\_20101122\_1.PNG



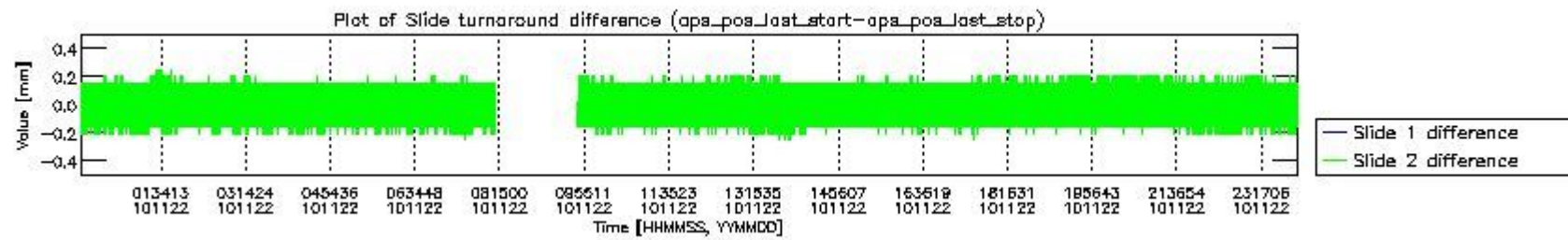
mipas\_daily\_report\_level0\_KSPT\_L0\_4504\_N\_20101122\_2.PNG



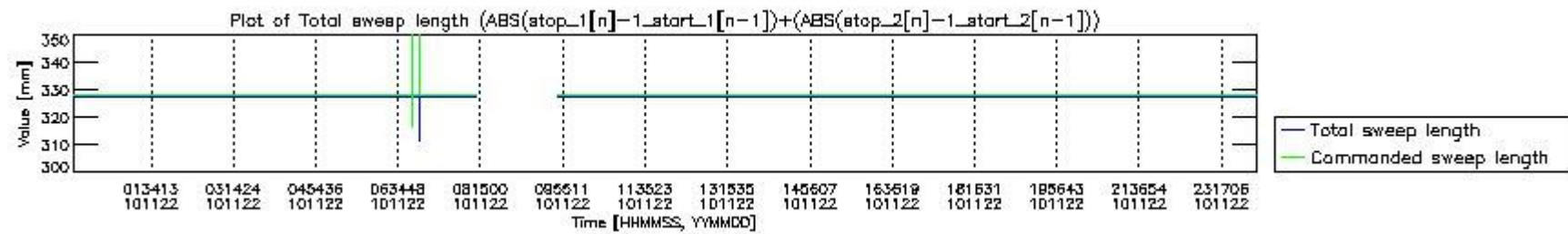
mipas\_daily\_report\_level0\_KSPT\_L0\_4504\_N\_20101122\_3.PNG



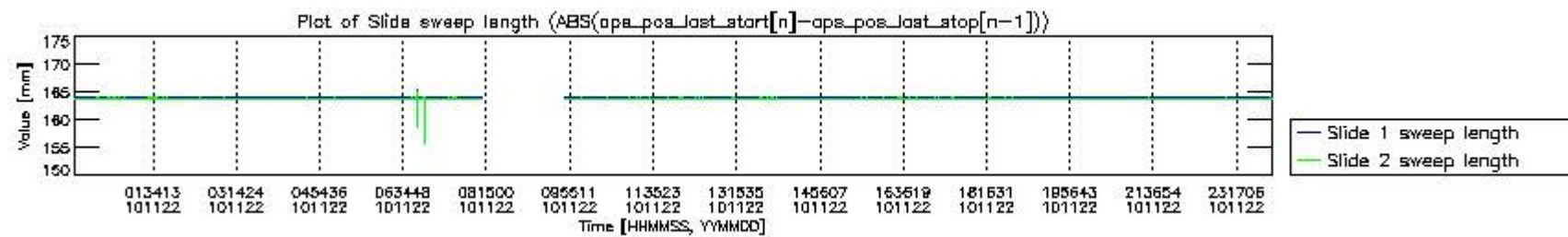
mipas\_daily\_report\_level0\_KSPT\_L0\_4504\_N\_20101122\_4.PNG



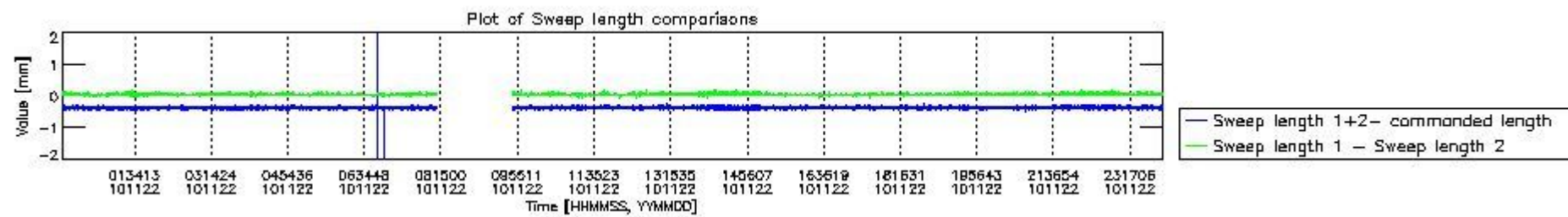
mipas\_daily\_report\_level0\_KSPT\_L0\_4504\_N\_20101122\_5.PNG



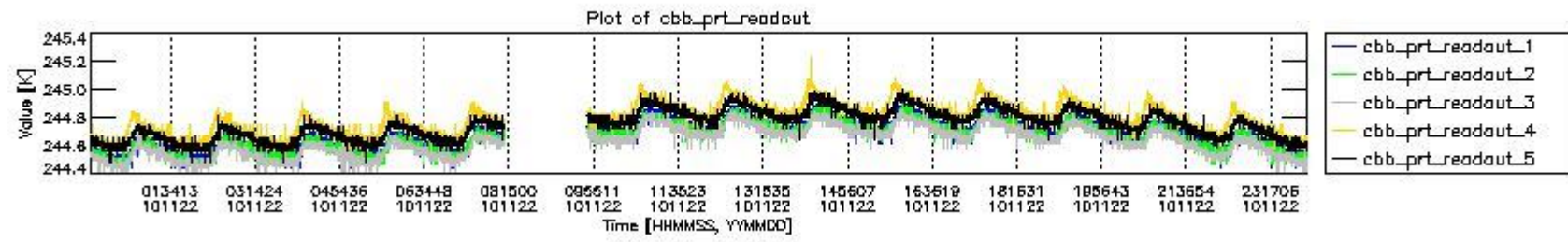
mipas\_daily\_report\_level0\_KSPT\_L0\_4504\_N\_20101122\_6.PNG



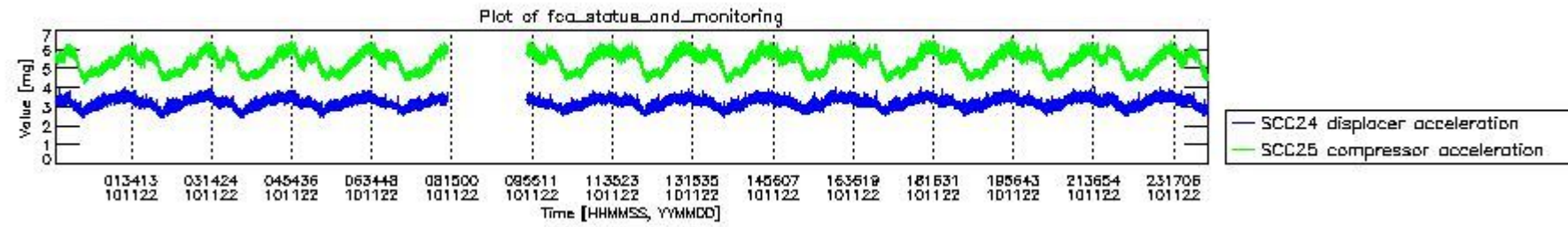
mipas\_daily\_report\_level0\_KSPT\_L0\_4504\_N\_20101122\_7.PNG



mipas\_daily\_report\_level0\_KSPT\_L0\_4504\_N\_20101122\_8.PNG



mipas\_daily\_report\_level0\_KSPT\_L0\_4504\_N\_20101122\_9.PNG

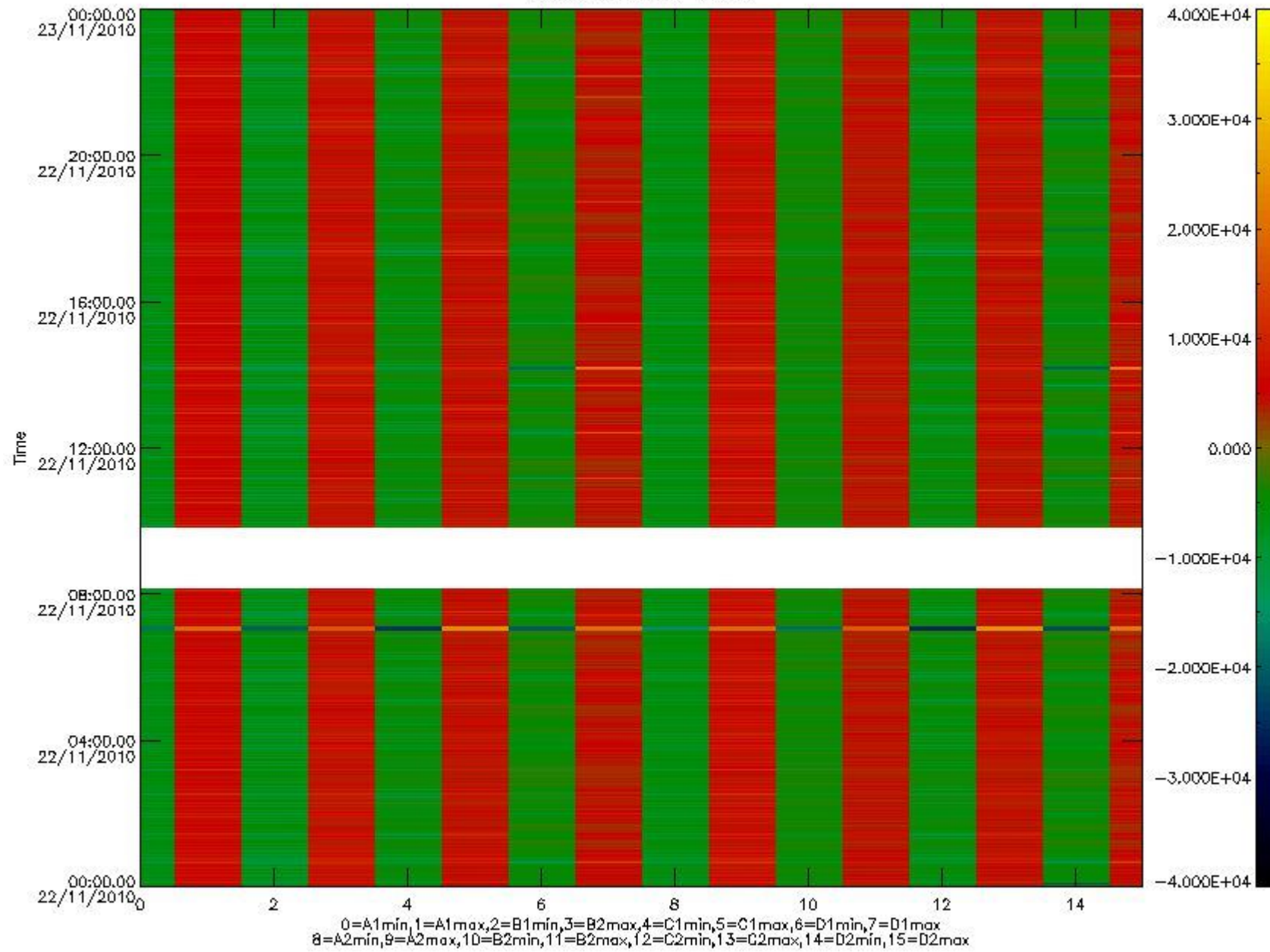


mipas\_daily\_report\_level0\_KSPT\_L0\_4504\_N\_20101122\_10.PNG

The following table shows channel statistics for all channels for this day.

Channel	Min	Max	ADC
A1	-18563	19740	16bit
B1	-20567	17690	16bit
C1	-24934	24822	16bit
D1	-32768	32767	16bit
A2	-16026	19865	16bit
B2	-18688	18270	16bit
C2	-25949	25543	16bit
D2	-32768	32767	16bit

MIPNLOP\_MIPSOUPAC\_aux\_fields\_igm\_cal, channel statistics plot  
Colour indicates value.



mipas\_daily\_report\_level0\_KSPT\_L0\_4504\_N\_20101122\_11.PNG

### 0.3 ADF monitoring

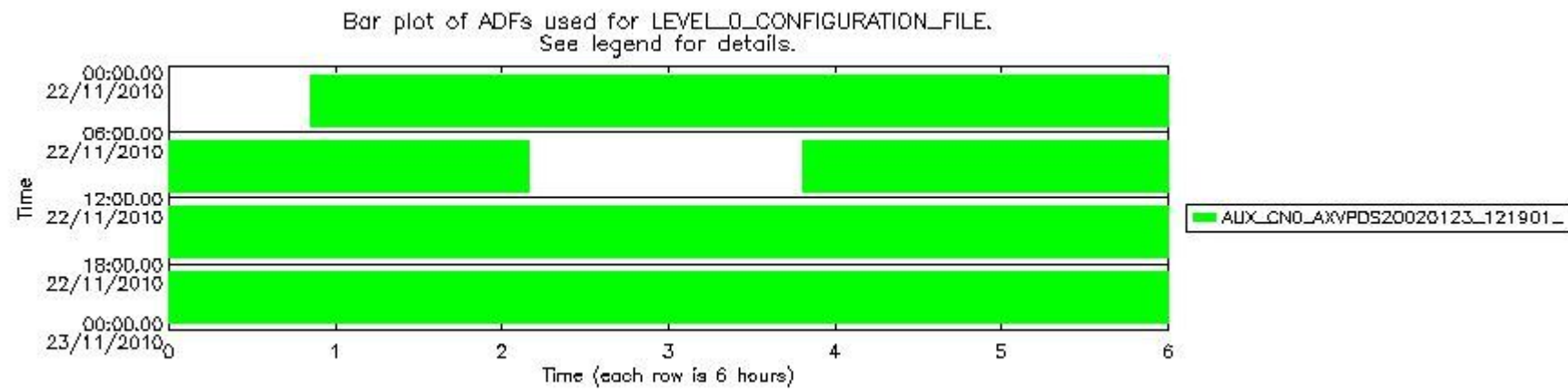
The use of ADFs is shown in two ways:

1. By means of two tables that can be used to find the ADF used for a specific product.
2. By means of plots that show changes in ADF using colours.

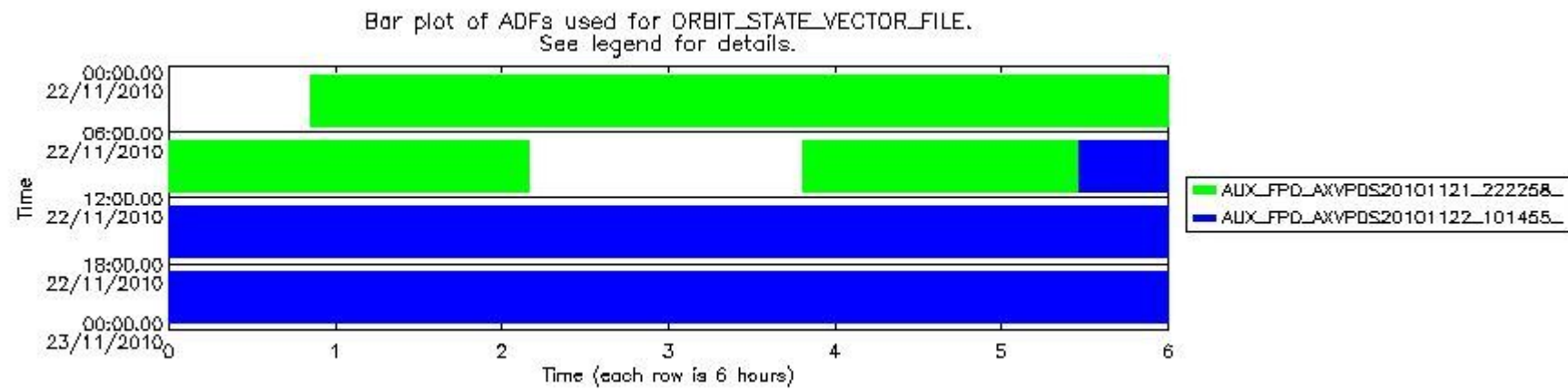
Number	ADF
0	AUX_CN0_AXVPDS20020123_121901_20020101_000000_20200101_000000
1	AUX_FPO_AXVPDS20101121_222258_20101121_114014_20101201_135408
2	AUX_FPO_AXVPDS20101122_101455_20101121_182110_20101201_203505

Number	Product name	#CN0	#FPO
--------	--------------	------	------

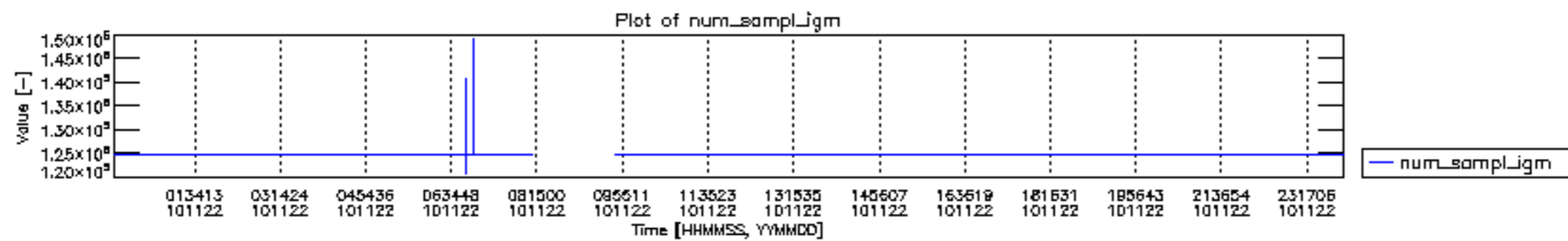
0	MIP_NL__0PNPDE20101122_005046_000055073096_00361_45634_2067.N1	0	1
1	MIP_NL__0PNPDE20101122_022026_000047383096_00362_45635_2068.N1	0	1
2	MIP_NL__0PNPDE20101122_033846_000062763096_00363_45636_2069.N1	0	1
3	MIP_NL__0PNPDE20101122_052244_000060073096_00364_45637_2070.N1	0	1
4	MIP_NL__0PNPDK20101122_070214_000040303096_00365_45638_3341.N1	0	1
5	MIP_NL__0PNPDK20101122_094810_000060503096_00367_45640_3343.N1	0	1
6	MIP_NL__0PNPDK20101122_112756_000061193096_00368_45641_3344.N1	0	2
7	MIP_NL__0PNPDK20101122_130854_000060233096_00369_45642_3345.N1	0	2
8	MIP_NL__0PNPDK20101122_144819_000058963096_00370_45643_3346.N1	0	2
9	MIP_NL__0PNPDK20101122_162601_000058543096_00371_45644_3350.N1	0	2
10	MIP_NL__0PNPDK20101122_163240_000054553096_00371_45644_3348.N1	0	2
11	MIP_NL__0PNPDK20101122_180234_000060173096_00372_45645_3349.N1	0	2
12	MIP_NL__0PNPDE20101122_194144_000040683096_00373_45646_2071.N1	0	2
13	MIP_NL__0PNPDE20101122_204755_000063573096_00373_45646_2072.N1	0	2
14	MIP_NL__0PNPDE20101122_223246_000061483096_00374_45647_2073.N1	0	2

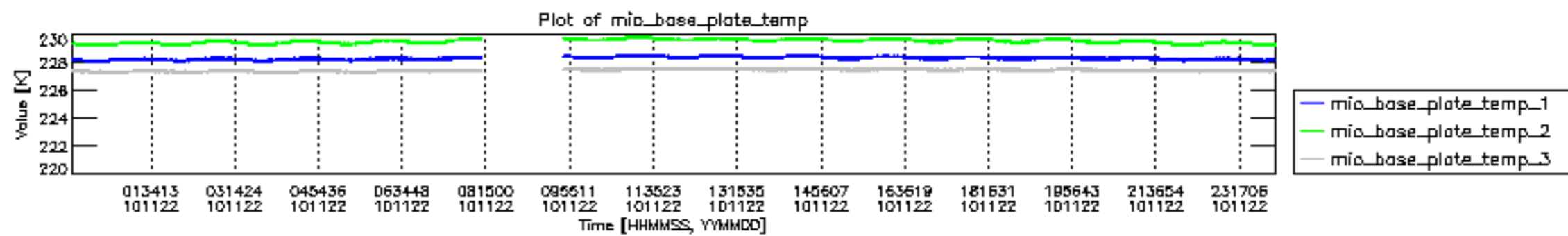


mipas\_daily\_report\_level0\_KSPT\_L0\_4504\_N\_20101122\_12.PNG

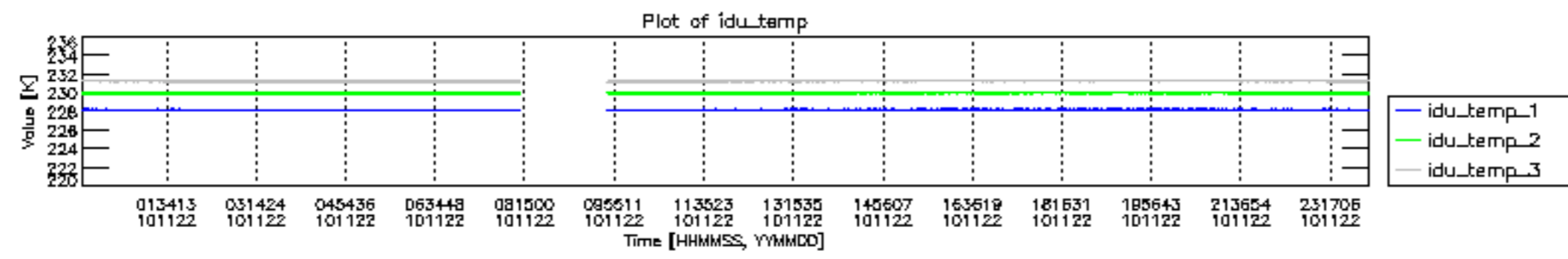


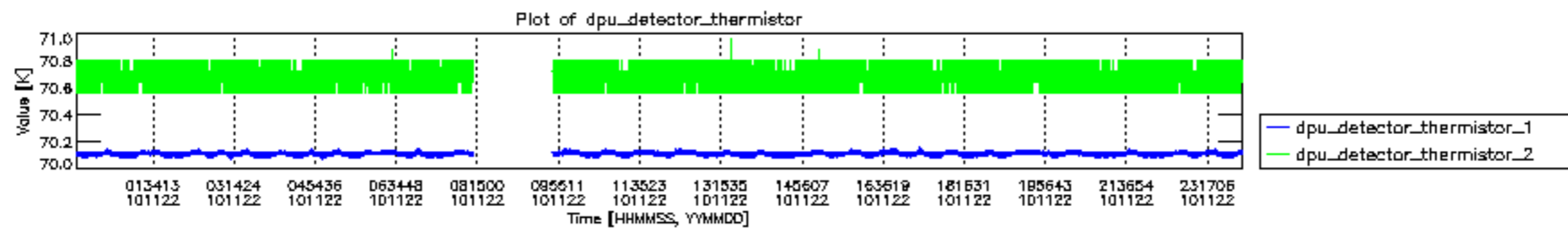
mipas\_daily\_report\_level0\_KSPT\_L0\_4504\_N\_20101122\_13.PNG

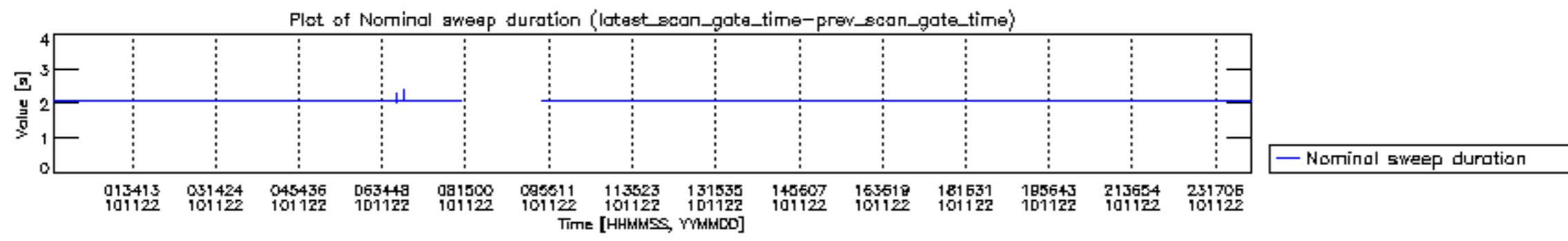


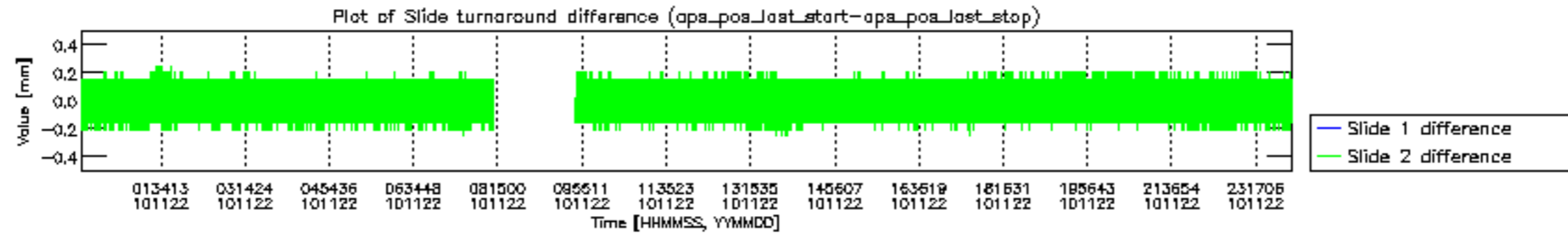


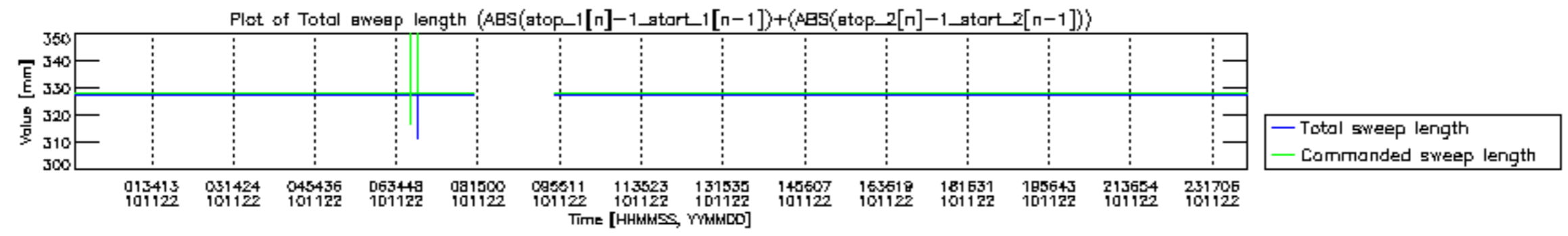


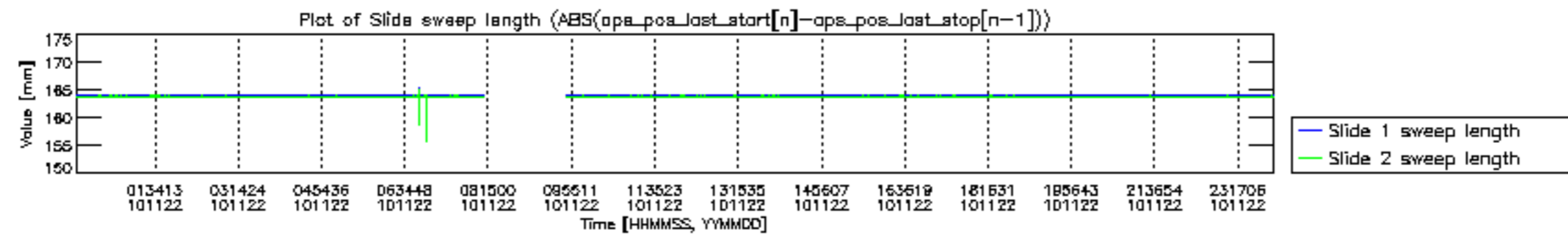


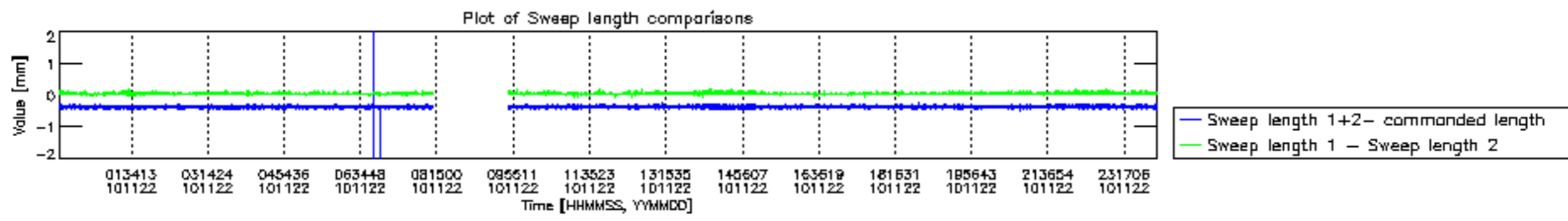


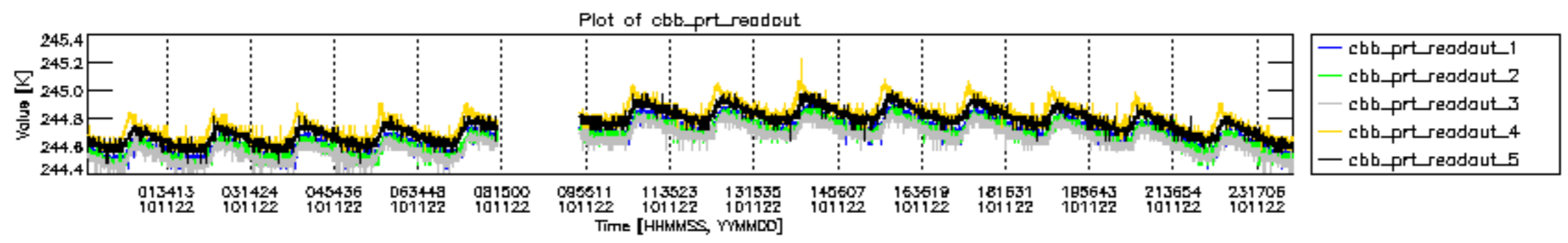




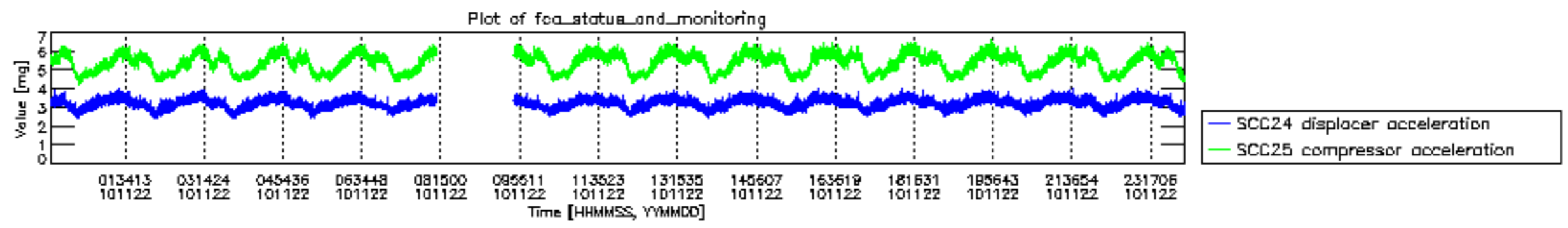












MIPNLOP\_MIPSOUPAC\_aux\_fields\_igm\_cal, channel statistics plot  
 Colour indicates value.

