

## 0. MIPAS Daily Report for level 0 products

### [0.1 General Info](#)

### [0.2 Instrument Operational Performance Parameters](#)

### [0.3 ADF monitoring](#)

## 0.1 General Info

This report contains a daily analysis on parameters extracted from MIPAS level 0 data (The MIP\_NL\_\_0P product).

### 0.1.1 Report summary

The table below shows general characteristics of the data that are included into this report.

Item	Value
Report version	v1.6 08-11-2010
Time of report generation	24NOV2010 05:25:19
Data source version	KSPT_L0/4504-N
Processing scope for products	19NOV2010 00:00:00 to 20NOV2010 00:00:00
Start time of first product within scope	19NOV2010 01:00:45
Stop time of last product within scope	20NOV2010 00:23:52
Total number of level 0 products	16
Number of level 0 products with errors	1

### 0.1.2 Product Quality Indicators per product

The following table shows a summary for each product used in this report.

#	Product name	Start time	Stop time	Prod err	ISP err sign	ISP miss sign	ISP disc sign	rs sign
0	MIP_NL__0PNPDE20101119_010045_000101683096_00318_45591_2045.N1	19NOV2010 01:00:45	19NOV2010 03:50:13	0	0	0	0	0
1	MIP_NL__0PNPDE20101119_014201_000076923096_00319_45592_2046.N1	19NOV2010 01:42:01	19NOV2010 03:50:13	0	0	0	0	0
2	MIP_NL__0PNPDE20101119_034939_000062863096_00320_45593_2048.N1	19NOV2010 03:49:39	19NOV2010 05:34:26	0	0	0	0	0
3	MIP_NL__0PNPDE20101119_053352_000060033096_00321_45594_2049.N1	19NOV2010 05:33:52	19NOV2010 07:13:55	0	0	0	0	0
4	MIP_NL__0PNPDK20101119_071321_000040553096_00322_45595_3314.N1	19NOV2010 07:13:21	19NOV2010 08:20:56	0	0	0	0	0
5	MIP_NL__0PNPDK20101119_081958_000062073096_00323_45596_3315.N1	19NOV2010 08:19:58	19NOV2010 10:03:25	0	0	0	0	0
6	MIP_NL__0PNPDK20101119_100147_000058733096_00324_45597_3675.N1	19NOV2010 10:01:47	19NOV2010 11:39:39	0	0	0	0	0
7	MIP_NL__0PNPDK20101119_102458_000044813096_00324_45597_3316.N1	19NOV2010 10:24:58	19NOV2010 11:39:39	1	0	1	0	0
8	MIP_NL__0PNPDK20101119_113826_000060653096_00325_45598_3317.N1	19NOV2010 11:38:26	19NOV2010 13:19:31	0	0	0	0	0
9	MIP_NL__0PNPDK20101119_131832_000059273096_00326_45599_3318.N1	19NOV2010 13:18:32	19NOV2010 14:57:19	0	0	0	0	0
10	MIP_NL__0PNPDK20101119_145637_000059373096_00327_45600_3319.N1	19NOV2010 14:56:37	19NOV2010 16:35:35	0	0	0	0	0
11	MIP_NL__0PNPDK20101119_163457_000058643096_00328_45601_3320.N1	19NOV2010 16:34:57	19NOV2010 18:12:41	0	0	0	0	0
12	MIP_NL__0PNPDK20101119_181141_000015333096_00329_45602_3321.N1	19NOV2010 18:11:41	19NOV2010 18:37:14	0	0	0	0	0
13	MIP_NL__0PNPDE20101119_195914_000035243096_00330_45603_2050.N1	19NOV2010 19:59:14	19NOV2010 20:57:58	0	0	0	0	0
14	MIP_NL__0PNPDE20101119_205653_000064763096_00330_45603_2051.N1	19NOV2010 20:56:53	19NOV2010 22:44:50	0	0	0	0	0
15	MIP_NL__0PNPDE20101119_224345_000060073096_00331_45604_2052.N1	19NOV2010 22:43:45	20NOV2010 00:23:52	0	0	0	0	0

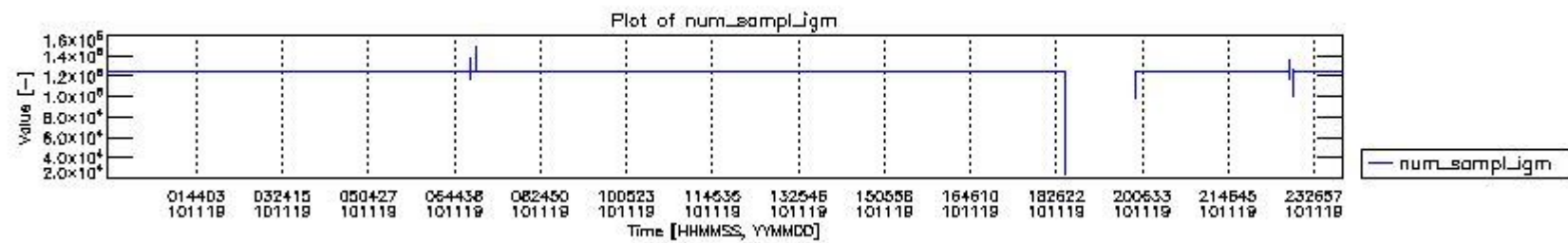
## 0.2 Instrument Operational Performance Parameters

The following plots give an overview of various instrument parameters for this day. The instrument parameters are part of the auxiliary data field within the source packets of the MIP\_NL\_\_0P product. The auxiliary data is normally included twice per interferogram. Note that only the first packet is currently included in monitoring.

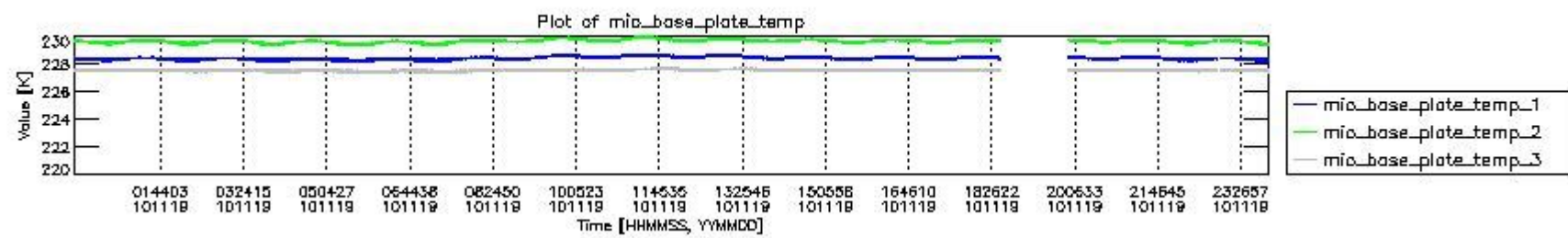
The following table shows the counts of various interferogram number of samples

Number of igm samples	Count [#]	Count [%]
24396	1	0.0025590501
99219	1	0.0025590501

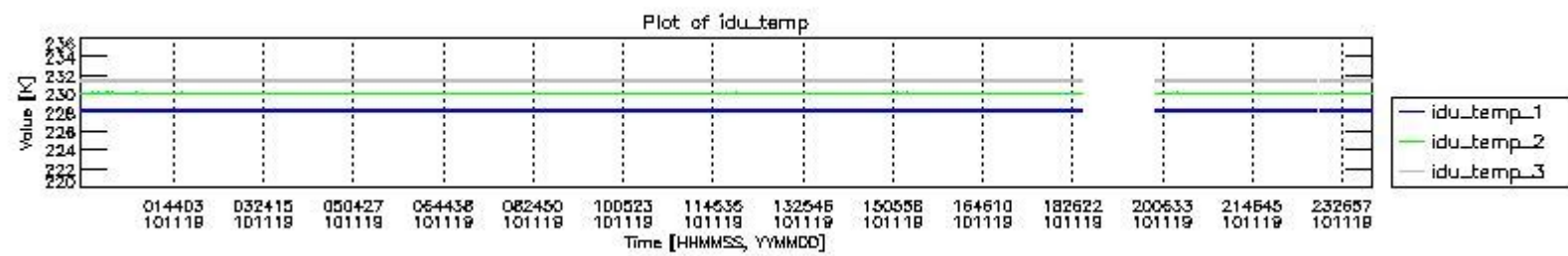
100632	1	0.0025590501
116379	1	0.0025590501
117123	1	0.0025590501
124142	1	0.0025590501
124471	1	0.0025590501
124800	36297	92.885841
124803	2764	7.0732144
125884	1	0.0025590501
126936	1	0.0025590501
126968	1	0.0025590501
128090	1	0.0025590501
129578	1	0.0025590501
136511	1	0.0025590501
137255	1	0.0025590501
147068	1	0.0025590501
149204	1	0.0025590501



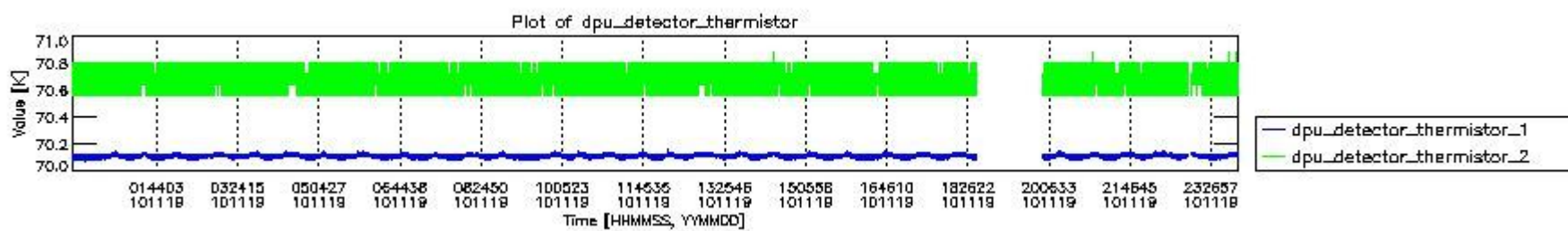
mipas\_daily\_report\_level0\_KSPT\_L0\_4504\_N\_20101119\_0.PNG



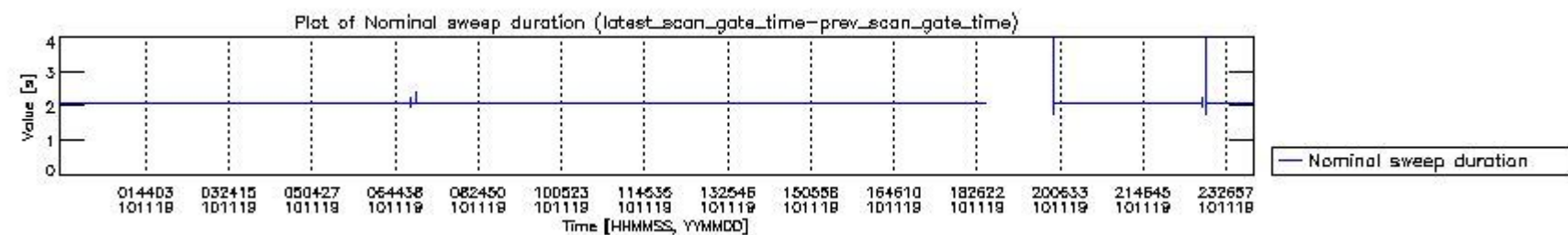
mipas\_daily\_report\_level0\_KSPT\_L0\_4504\_N\_20101119\_1.PNG



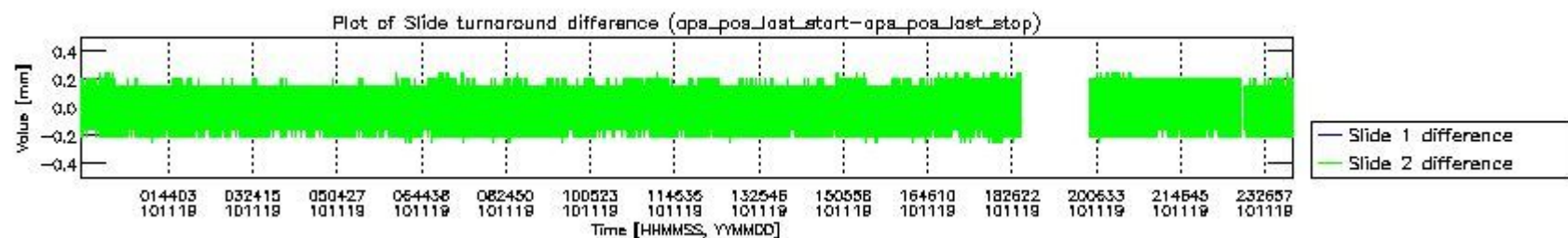
mipas\_daily\_report\_level0\_KSPT\_L0\_4504\_N\_20101119\_2.PNG



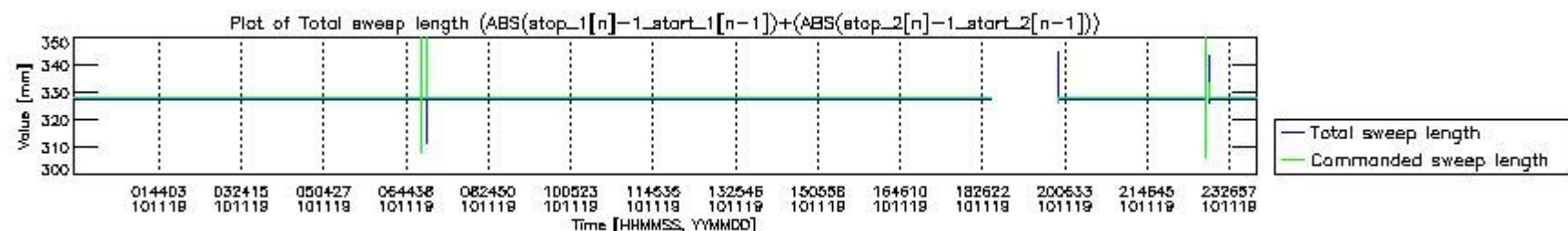
mipas\_daily\_report\_level0\_KSPT\_L0\_4504\_N\_20101119\_3.PNG



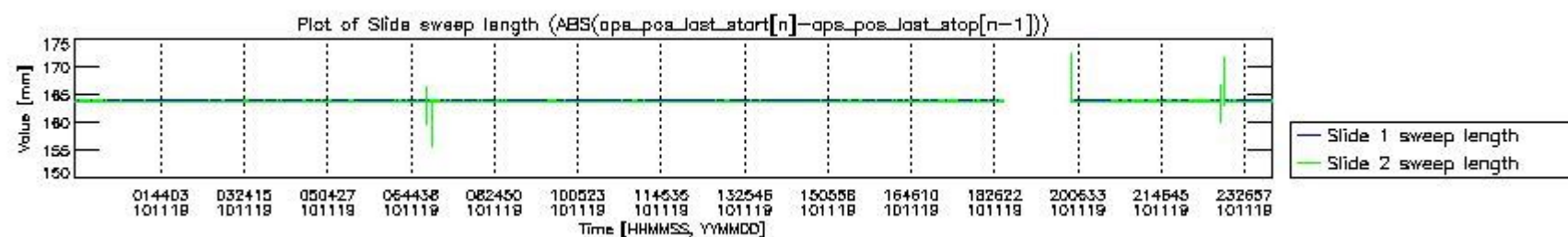
mipas\_daily\_report\_level0\_KSPT\_L0\_4504\_N\_20101119\_4.PNG



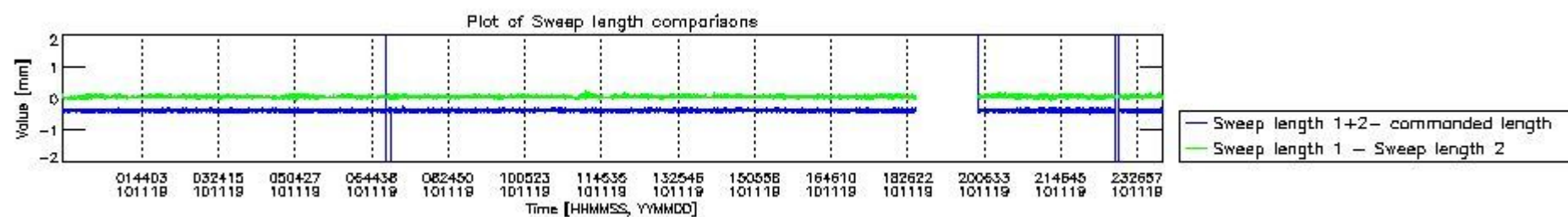
mipas\_daily\_report\_level0\_KSPT\_L0\_4504\_N\_20101119\_5.PNG



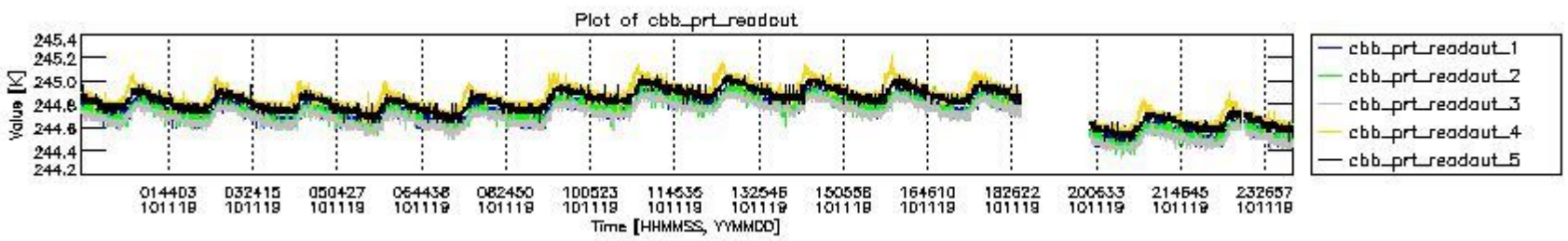
mipas\_daily\_report\_level0\_KSPT\_L0\_4504\_N\_20101119\_6.PNG



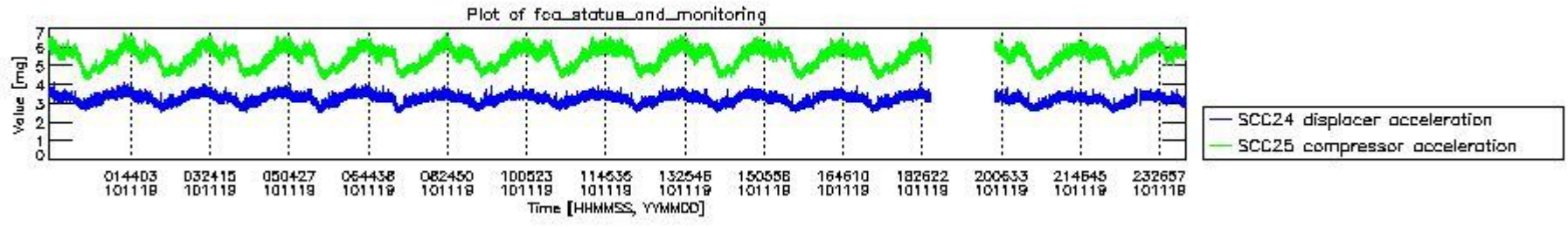
mipas\_daily\_report\_level0\_KSPT\_L0\_4504\_N\_20101119\_7.PNG



mipas\_daily\_report\_level0\_KSPT\_L0\_4504\_N\_20101119\_8.PNG



mipas\_daily\_report\_level0\_KSPT\_L0\_4504\_N\_20101119\_9.PNG

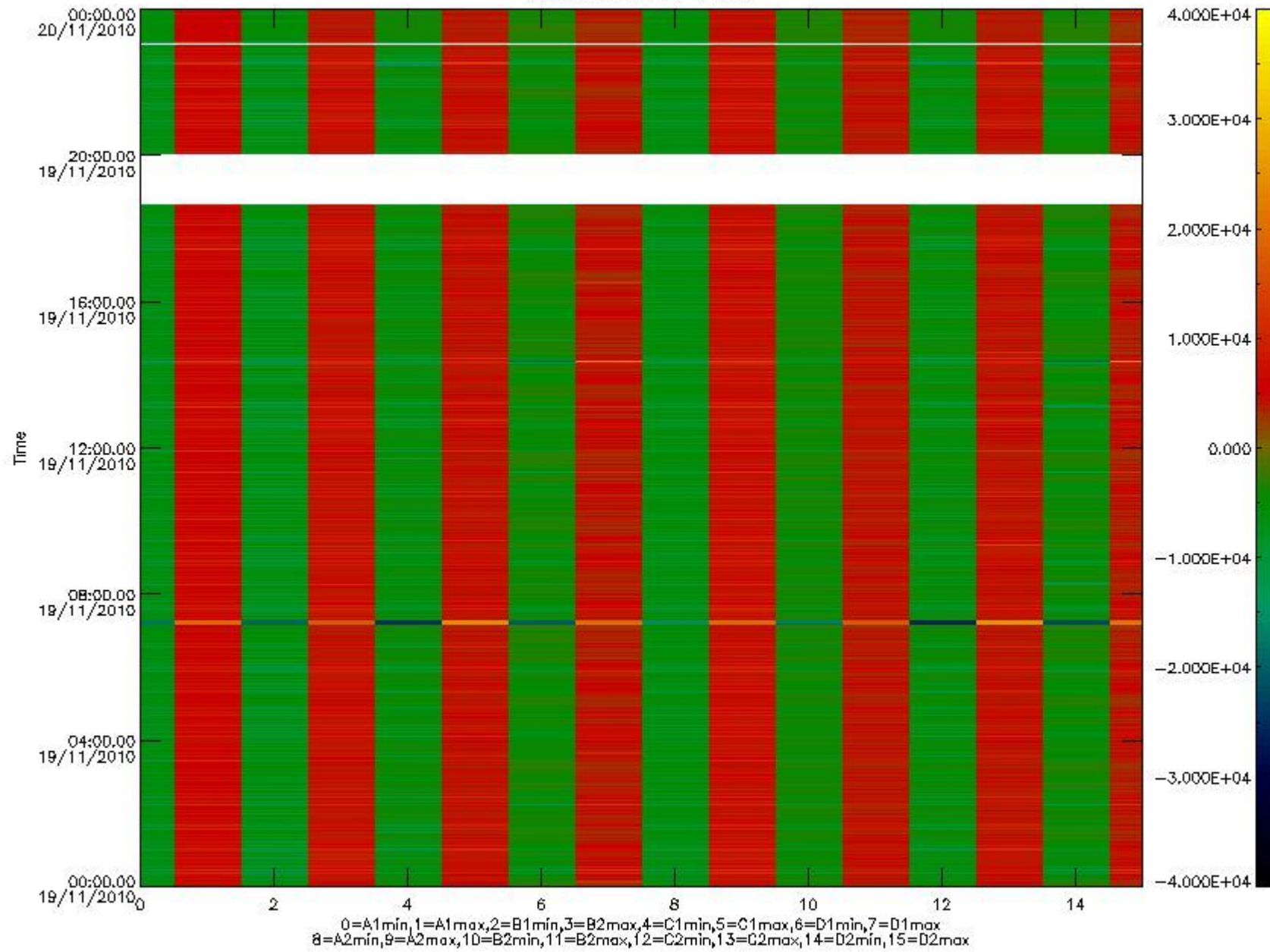


mipas\_daily\_report\_level0\_KSPT\_L0\_4504\_N\_20101119\_10.PNG

The following table shows channel statistics for all channels for this day.

Channel	Min	Max	ADC
A1	-18595	19782	16bit
B1	-20612	17704	16bit
C1	-25045	25018	16bit
D1	-32768	32767	16bit
A2	-16062	19895	16bit
B2	-18756	18340	16bit
C2	-26050	25734	16bit
D2	-32768	32767	16bit

MIPNLOP\_MIPSOUPAC\_aux\_fields\_igm\_cal, channel statistics plot  
Colour indicates value.



mipas\_daily\_report\_level0\_KSPT\_L0\_4504\_N\_20101119\_11.PNG

### 0.3 ADF monitoring

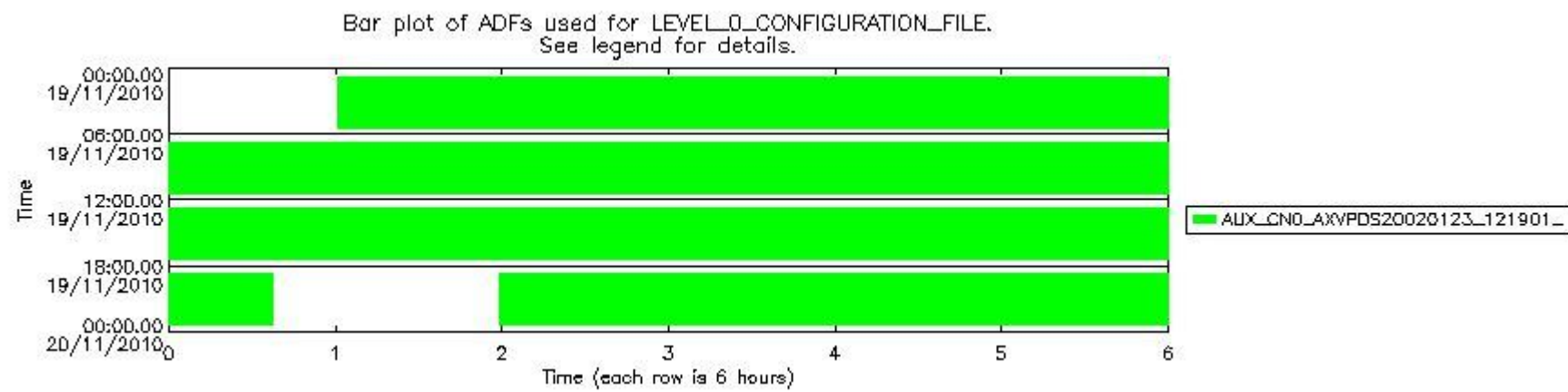
The use of ADFs is shown in two ways:

1. By means of two tables that can be used to find the ADF used for a specific product.
2. By means of plots that show changes in ADF using colours.

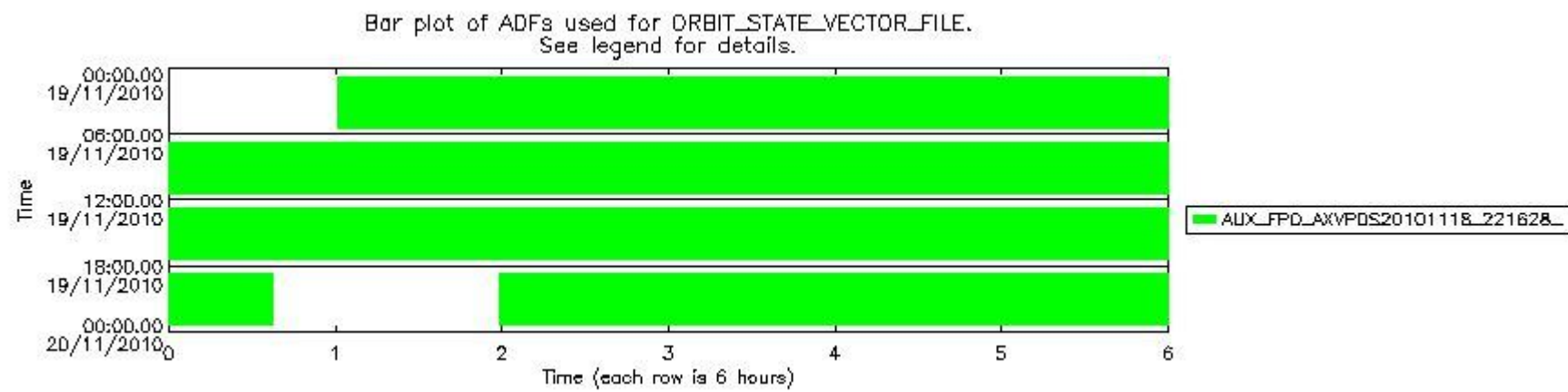
Number	ADF
0	AUX_CN0_AXVPDS20020123_121901_20020101_000000_20200101_000000
1	AUX_FPO_AXVPDS20101118_221628_20101118_183107_20101128_204501

Number	Product name	#CN0	#FPO
0	MIP_NL_0PNPDE20101119_010045_000101683096_00318_45591_2045.N1	0	1

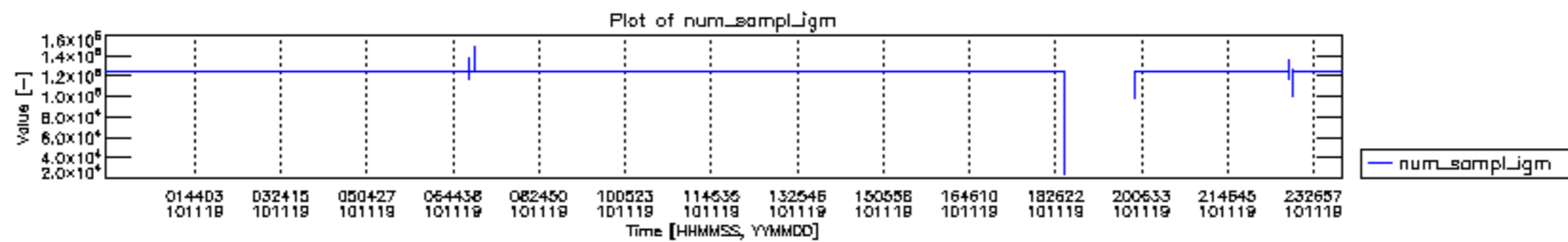
1	MIP_NL__0PNPDE20101119_014201_000076923096_00319_45592_2046.N1	0	1
2	MIP_NL__0PNPDE20101119_034939_000062863096_00320_45593_2048.N1	0	1
3	MIP_NL__0PNPDE20101119_053352_000060033096_00321_45594_2049.N1	0	1
4	MIP_NL__0PNPDK20101119_071321_000040553096_00322_45595_3314.N1	0	1
5	MIP_NL__0PNPDK20101119_081958_000062073096_00323_45596_3315.N1	0	1
6	MIP_NL__0PNPDK20101119_100147_000058733096_00324_45597_3675.N1	0	1
7	MIP_NL__0PNPDK20101119_102458_000044813096_00324_45597_3316.N1	0	1
8	MIP_NL__0PNPDK20101119_113826_000060653096_00325_45598_3317.N1	0	1
9	MIP_NL__0PNPDK20101119_131832_000059273096_00326_45599_3318.N1	0	1
10	MIP_NL__0PNPDK20101119_145637_000059373096_00327_45600_3319.N1	0	1
11	MIP_NL__0PNPDK20101119_163457_000058643096_00328_45601_3320.N1	0	1
12	MIP_NL__0PNPDK20101119_181141_000015333096_00329_45602_3321.N1	0	1
13	MIP_NL__0PNPDE20101119_195914_000035243096_00330_45603_2050.N1	0	1
14	MIP_NL__0PNPDE20101119_205653_000064763096_00330_45603_2051.N1	0	1
15	MIP_NL__0PNPDE20101119_224345_000060073096_00331_45604_2052.N1	0	1

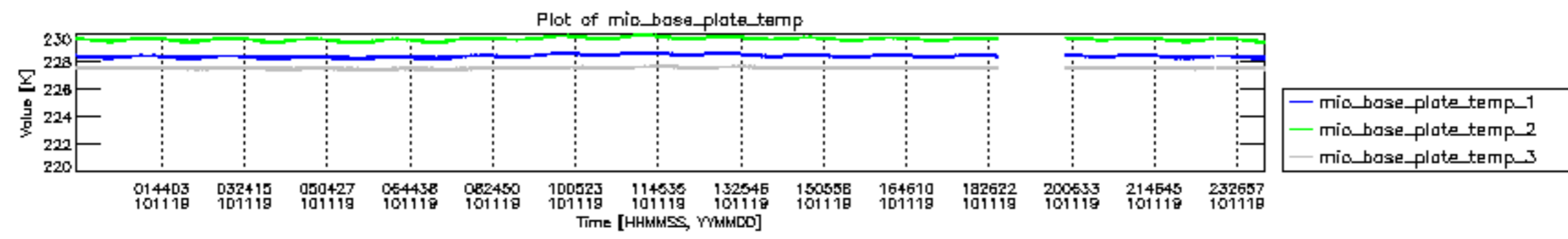


mipas\_daily\_report\_level0\_KSPT\_L0\_4504\_N\_20101119\_12.PNG

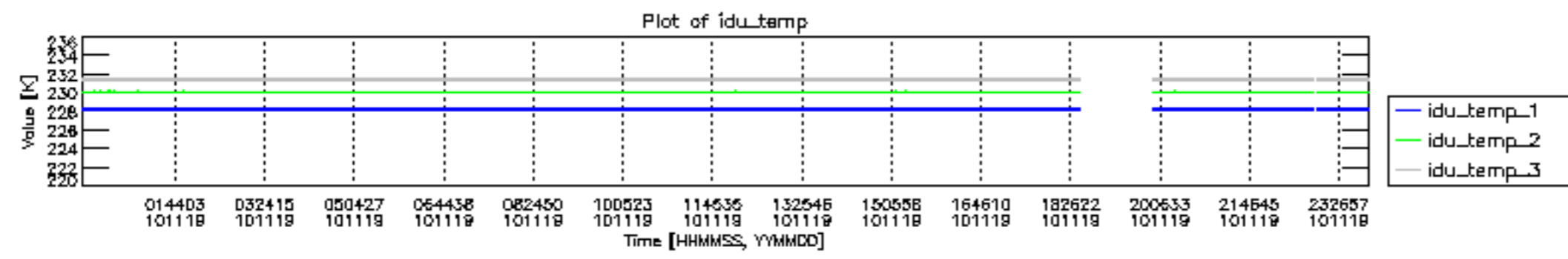


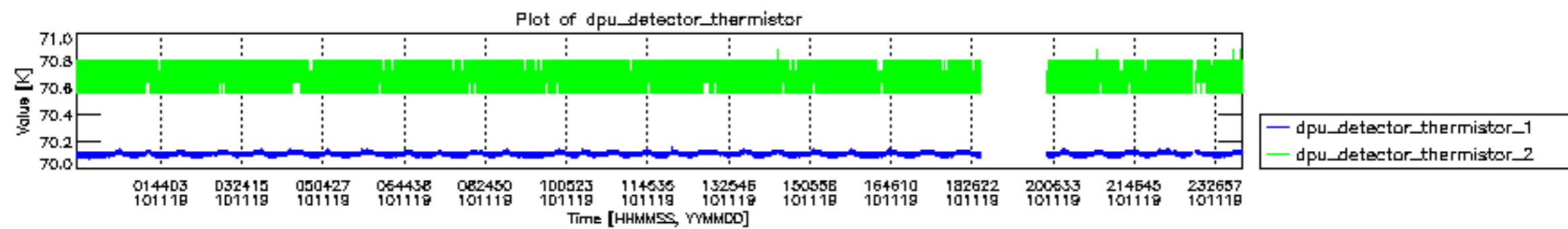
mipas\_daily\_report\_level0\_KSPT\_L0\_4504\_N\_20101119\_13.PNG

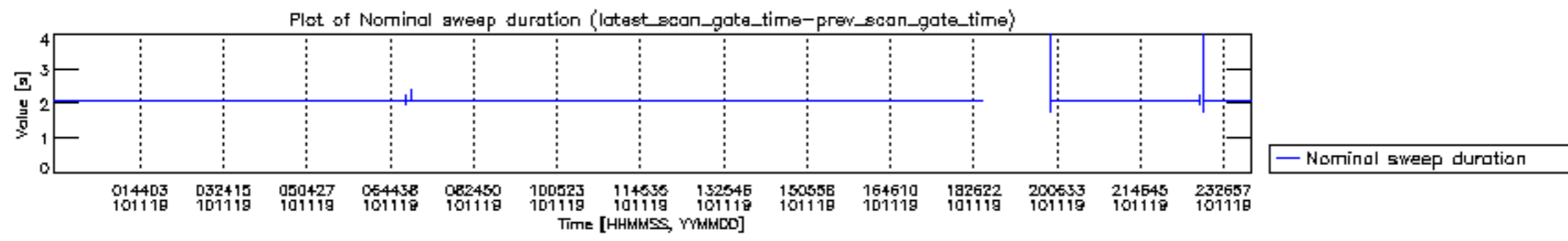


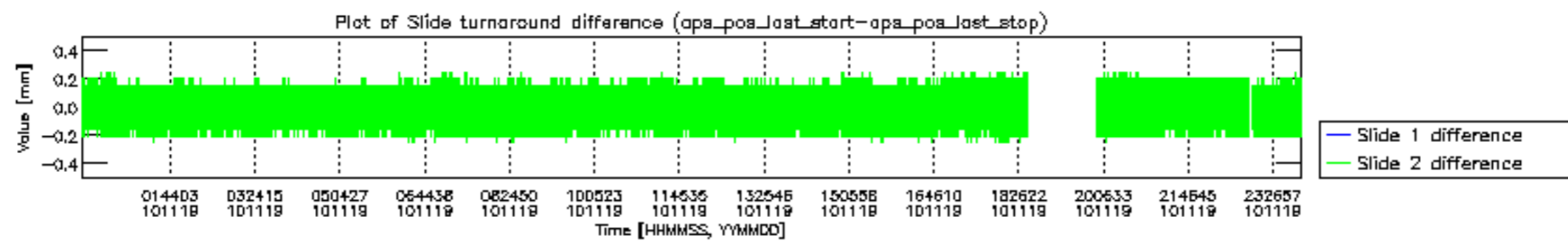


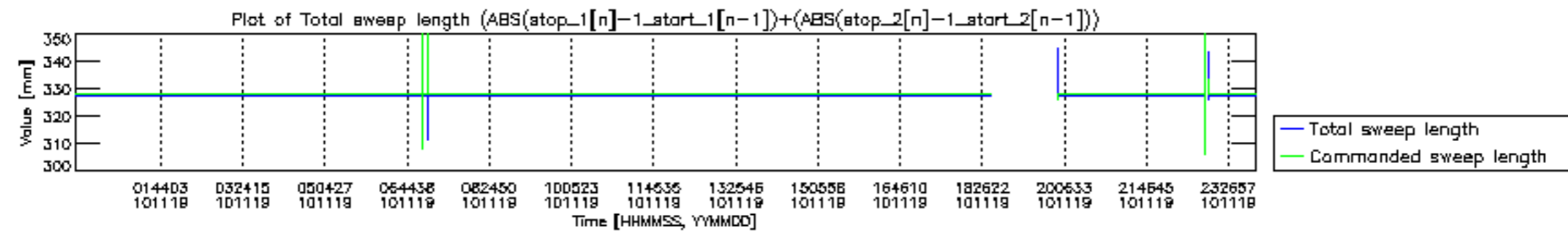


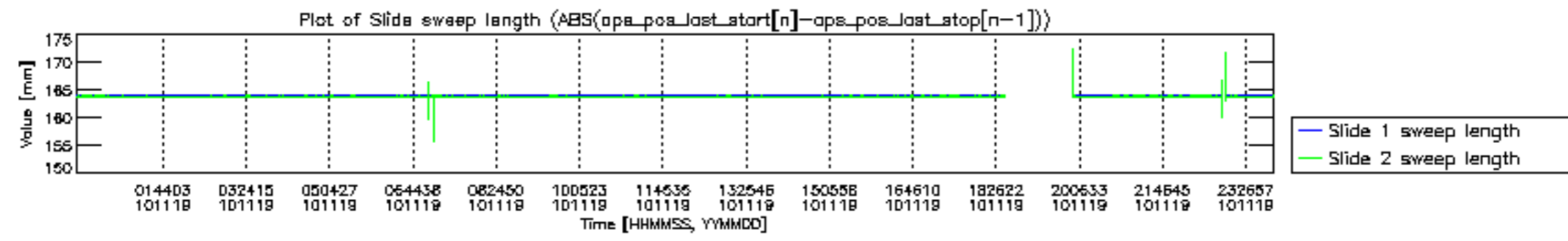


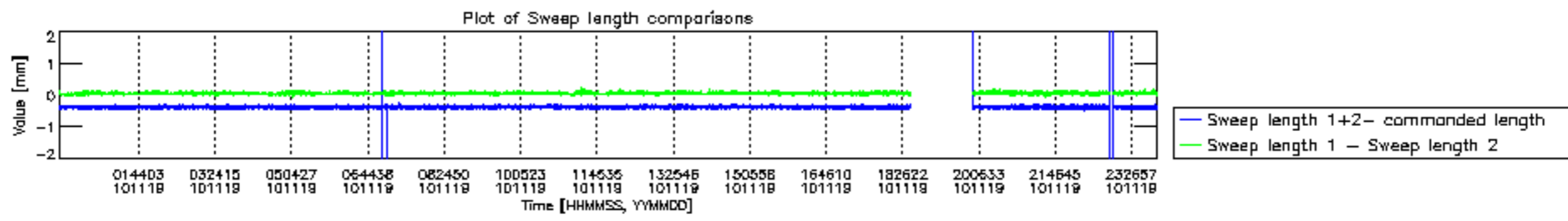


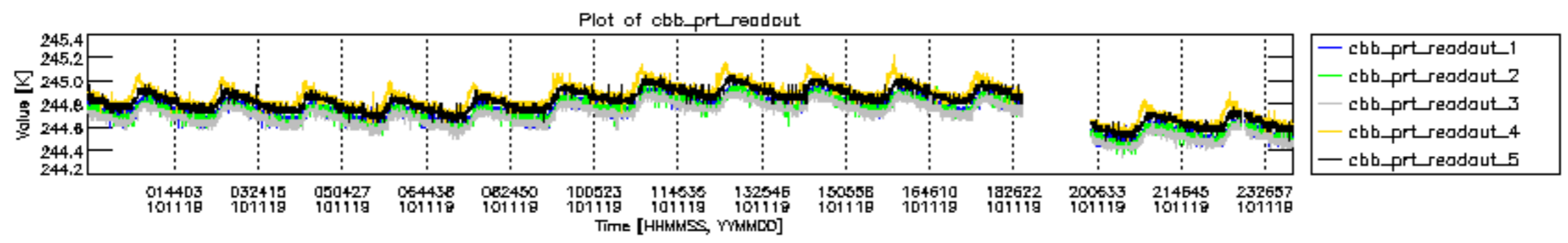




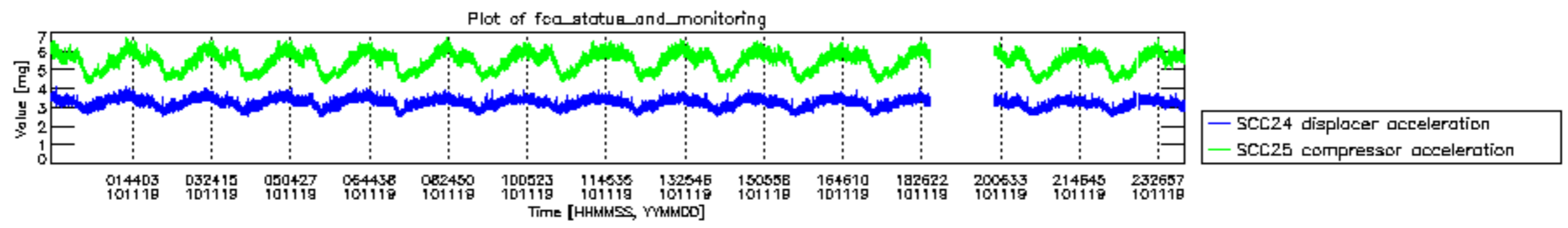












MIPNLOP\_MIPSOUPAC\_aux\_fields\_igm\_cal, channel statistics plot  
 Colour indicates value.

