

0. MIPAS Daily Report for level 0 products

[0.1 General Info](#)

[0.2 Instrument Operational Performance Parameters](#)

[0.3 ADF monitoring](#)

0.1 General Info

This report contains a daily analysis on parameters extracted from MIPAS level 0 data (The MIP_NL__0P product).

0.1.1 Report summary

The table below shows general characteristics of the data that are included into this report.

Item	Value
Report version	v1.6 08-11-2010
Time of report generation	17NOV2010 05:24:05
Data source version	KSPT_L0/4504-N
Processing scope for products	12NOV2010 00:00:00 to 13NOV2010 00:00:00
Start time of first product within scope	12NOV2010 00:17:33
Stop time of last product within scope	13NOV2010 01:19:18
Total number of level 0 products	14
Number of level 0 products with errors	0

0.1.2 Product Quality Indicators per product

The following table shows a summary for each product used in this report.

#	Product name	Start time	Stop time	Prod err	ISP err sign	ISP miss sign	ISP disc sign	rs sign
0	MIP_NL__0PNPDE20101112_001733_000058683096_00217_45490_1839.N1	12NOV2010 00:17:33	12NOV2010 01:55:22	0	0	0	0	0
1	MIP_NL__0PNPDE20101112_015423_000044233096_00218_45491_1840.N1	12NOV2010 01:54:23	12NOV2010 03:08:06	0	0	0	0	0
2	MIP_NL__0PNPDE20101112_030732_000025553096_00219_45492_1841.N1	12NOV2010 03:07:32	12NOV2010 03:50:07	0	0	0	0	0
3	MIP_NL__0PNPDK20101112_070809_000018153096_00221_45494_3250.N1	12NOV2010 07:08:09	12NOV2010 07:38:24	0	0	0	0	0
4	MIP_NL__0PNPDK20101112_073700_000061143096_00222_45495_3251.N1	12NOV2010 07:37:00	12NOV2010 09:18:54	0	0	0	0	0
5	MIP_NL__0PNPDK20101112_091756_000059003096_00223_45496_3253.N1	12NOV2010 09:17:56	12NOV2010 10:56:15	0	0	0	0	0
6	MIP_NL__0PNPDK20101112_105509_000061093096_00224_45497_3254.N1	12NOV2010 10:55:09	12NOV2010 12:36:57	0	0	0	0	0
7	MIP_NL__0PNPDK20101112_123559_000059413096_00225_45498_3255.N1	12NOV2010 12:35:59	12NOV2010 14:15:00	0	0	0	0	0
8	MIP_NL__0PNPDK20101112_141404_000059853096_00226_45499_3256.N1	12NOV2010 14:14:04	12NOV2010 15:53:49	0	0	0	0	0
9	MIP_NL__0PNPDK20101112_155257_000058493096_00227_45500_3257.N1	12NOV2010 15:52:57	12NOV2010 17:30:26	0	0	0	0	0
10	MIP_NL__0PNPDK20101112_172925_000016233096_00228_45501_3258.N1	12NOV2010 17:29:25	12NOV2010 17:56:29	0	0	0	0	0
11	MIP_NL__0PNPDE20101112_205214_000040033096_00230_45503_1842.N1	12NOV2010 20:52:14	12NOV2010 21:58:58	0	0	0	0	0
12	MIP_NL__0PNPDE20101112_215757_000062573096_00230_45503_1843.N1	12NOV2010 21:57:57	12NOV2010 23:42:14	0	0	0	0	0
13	MIP_NL__0PNPDE20101112_234107_000058913096_00231_45504_1844.N1	12NOV2010 23:41:07	13NOV2010 01:19:18	0	0	0	0	0

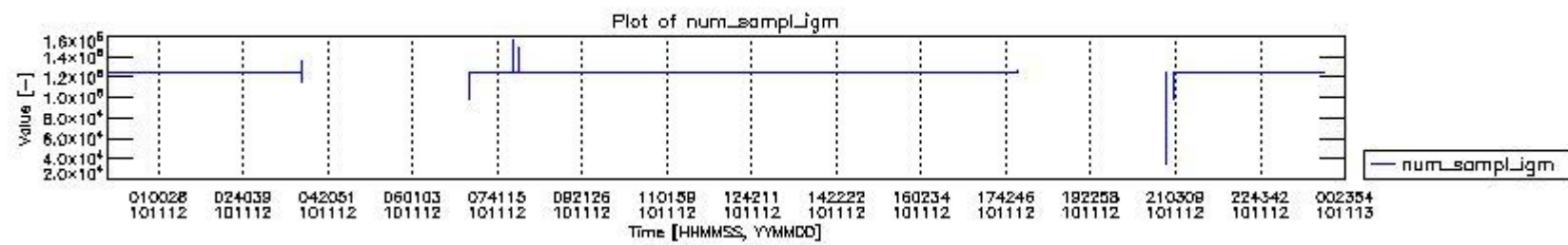
0.2 Instrument Operational Performance Parameters

The following plots give an overview of various instrument parameters for this day. The instrument parameters are part of the auxiliary data field within the source packets of the MIP_NL__0P product. The auxiliary data is normally included twice per interferogram. Note that only the first packet is currently included in monitoring.

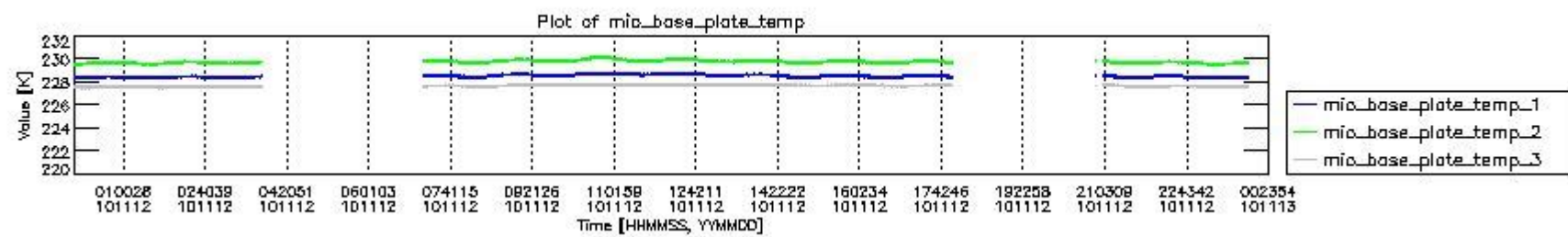
The following table shows the counts of various interferogram number of samples

Number of igm samples	Count [#]	Count [%]
35647	1	0.0032693628
98847	2	0.0065387256
99145	1	0.0032693628
115264	1	0.0032693628

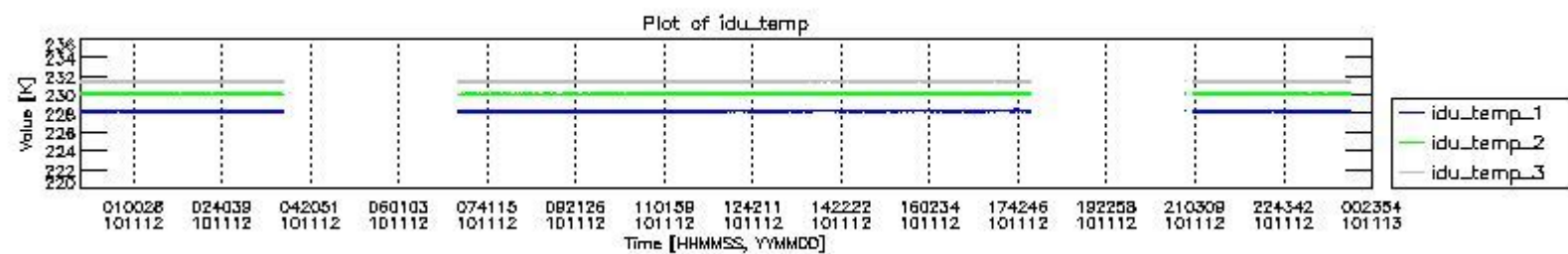
123398	2	0.0065387256
123994	1	0.0032693628
124099	2	0.0065387256
124397	1	0.0032693628
124800	28402	92.856442
124803	2165	7.0781705
125860	1	0.0032693628
126637	1	0.0032693628
127010	1	0.0032693628
130876	1	0.0032693628
135396	1	0.0032693628
147142	1	0.0032693628
149352	1	0.0032693628
151008	1	0.0032693628
157084	1	0.0032693628



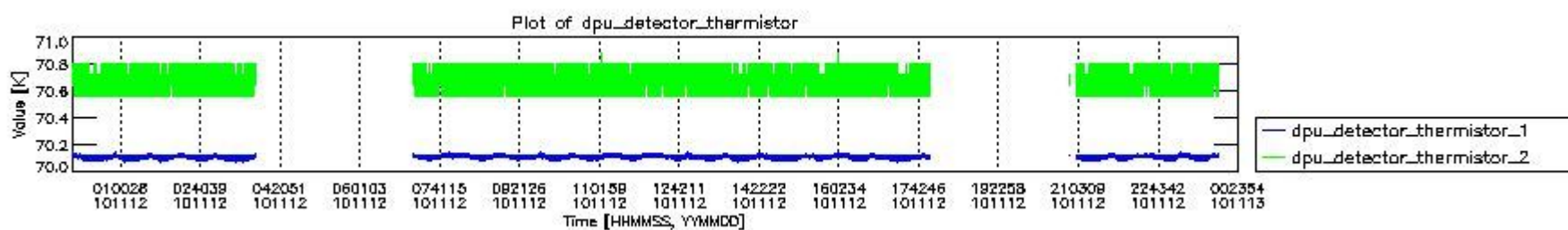
mipas_daily_report_level0_KSPT_L0_4504_N_20101112_0.PNG



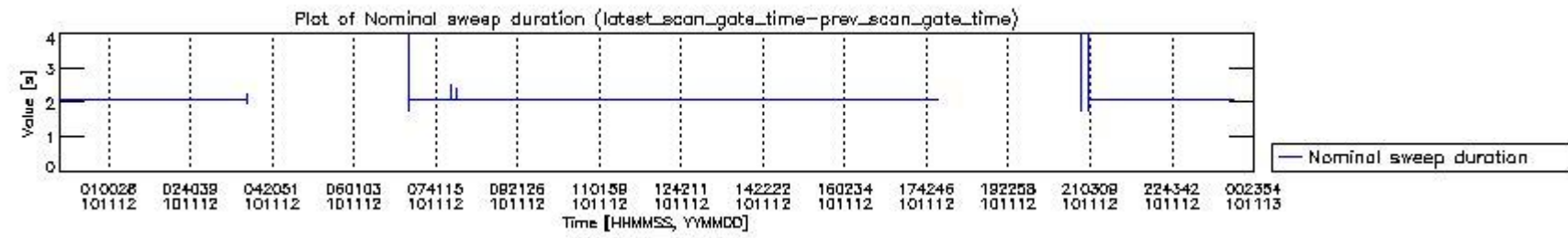
mipas_daily_report_level0_KSPT_L0_4504_N_20101112_1.PNG



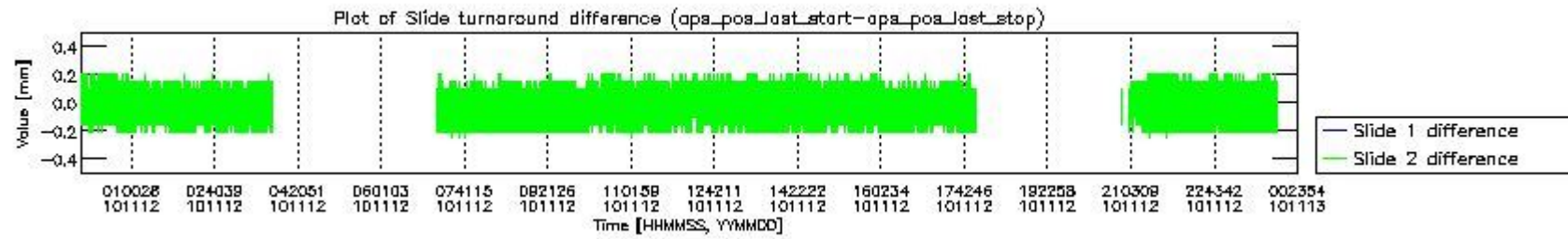
mipas_daily_report_level0_KSPT_L0_4504_N_20101112_2.PNG



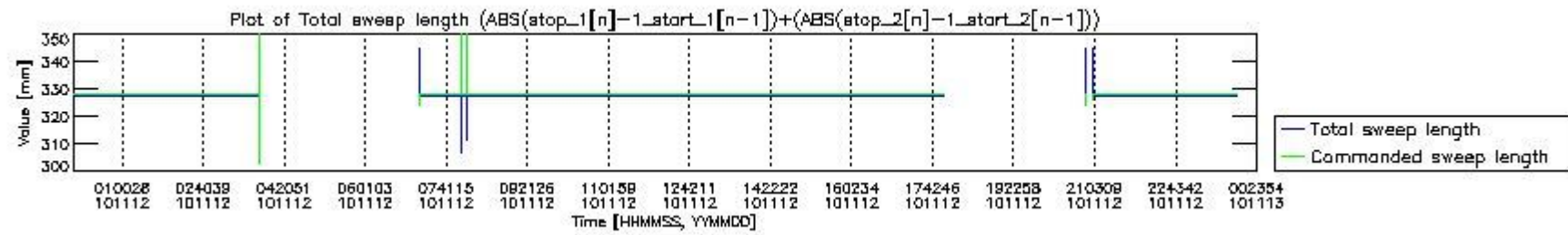
mipas_daily_report_level0_KSPT_L0_4504_N_20101112_3.PNG



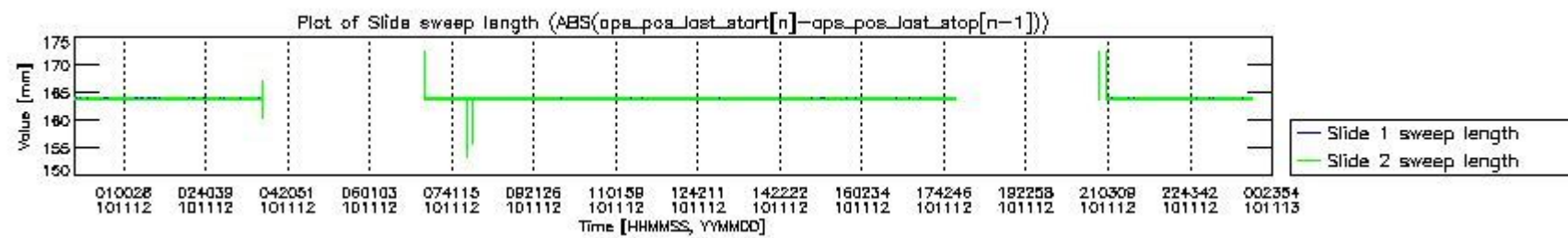
mipas_daily_report_level0_KSPT_L0_4504_N_20101112_4.PNG



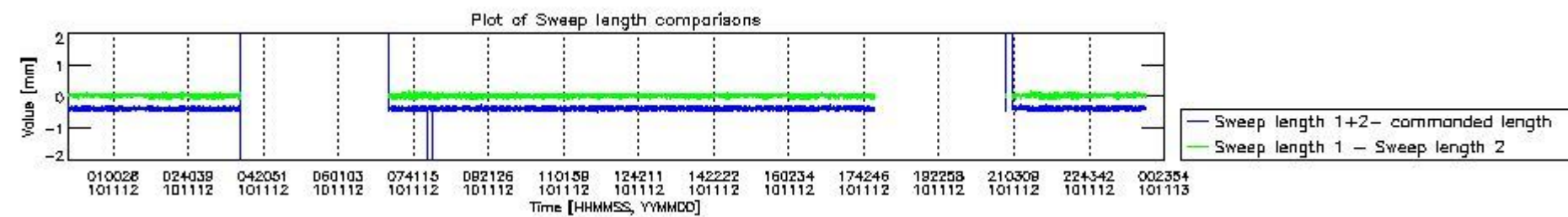
mipas_daily_report_level0_KSPT_L0_4504_N_20101112_5.PNG



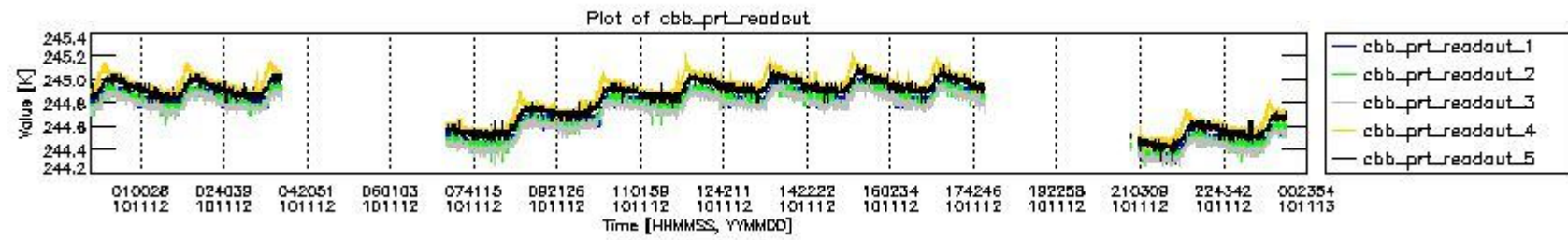
mipas_daily_report_level0_KSPT_L0_4504_N_20101112_6.PNG



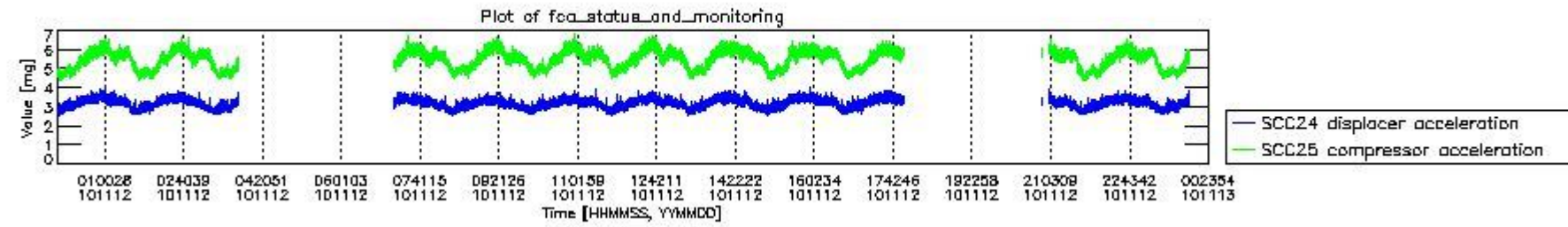
mipas_daily_report_level0_KSPT_L0_4504_N_20101112_7.PNG



mipas_daily_report_level0_KSPT_L0_4504_N_20101112_8.PNG



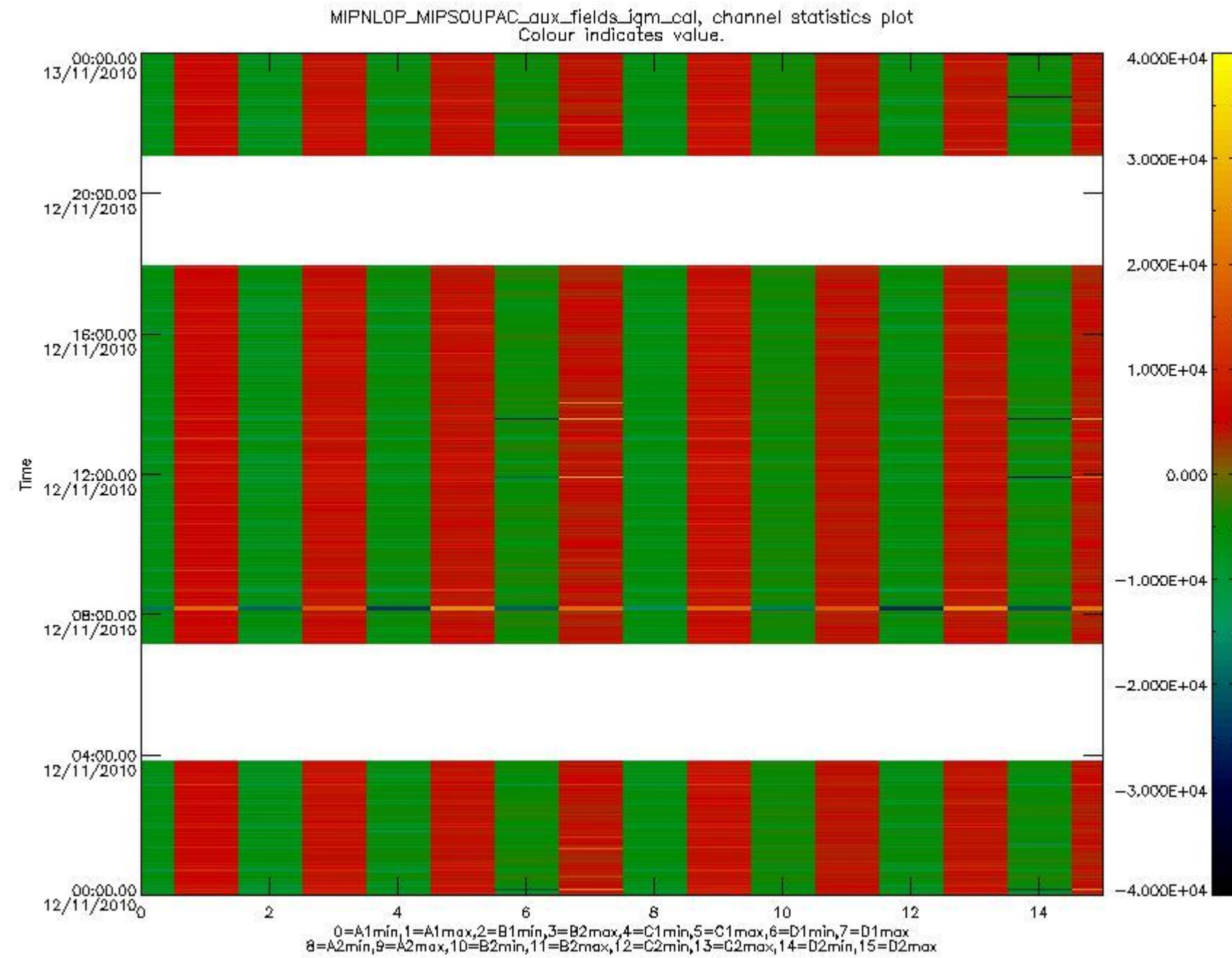
mipas_daily_report_level0_KSPT_L0_4504_N_20101112_9.PNG



mipas_daily_report_level0_KSPT_L0_4504_N_20101112_10.PNG

The following table shows channel statistics for all channels for this day.

Channel	Min	Max	ADC
A1	-32768	32767	16bit
B1	-32768	32767	16bit
C1	-24972	24937	16bit
D1	-32768	32767	16bit
A2	-32768	28250	16bit
B2	-32768	32767	16bit
C2	-25976	25664	16bit
D2	-32768	32767	16bit



mipas_daily_report_level0_KSPT_L0_4504_N_20101112_11.PNG

0.3 ADF monitoring

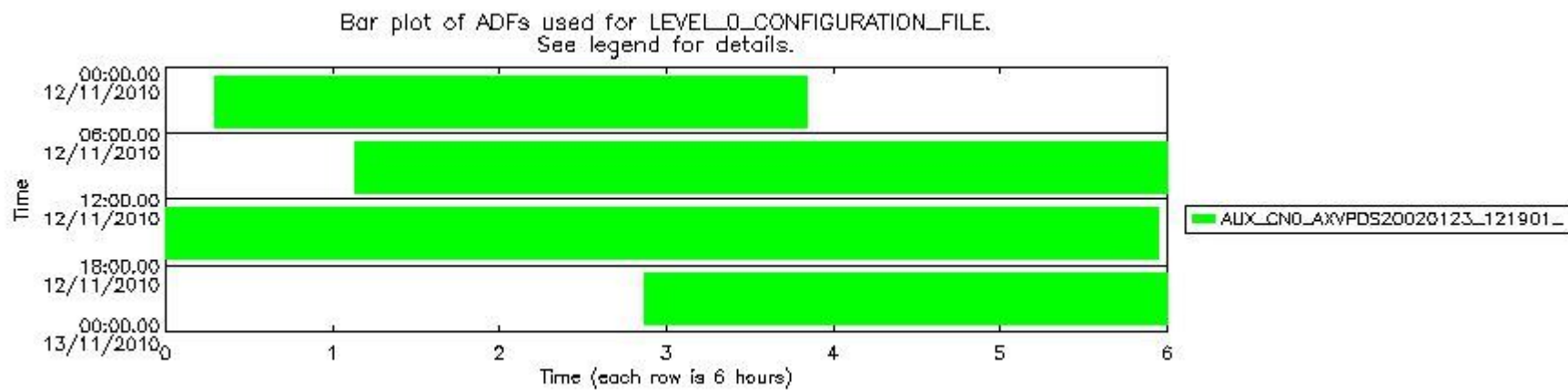
The use of ADFs is shown in two ways:

1. By means of two tables that can be used to find the ADF used for a specific product.
2. By means of plots that show changes in ADF using colours.

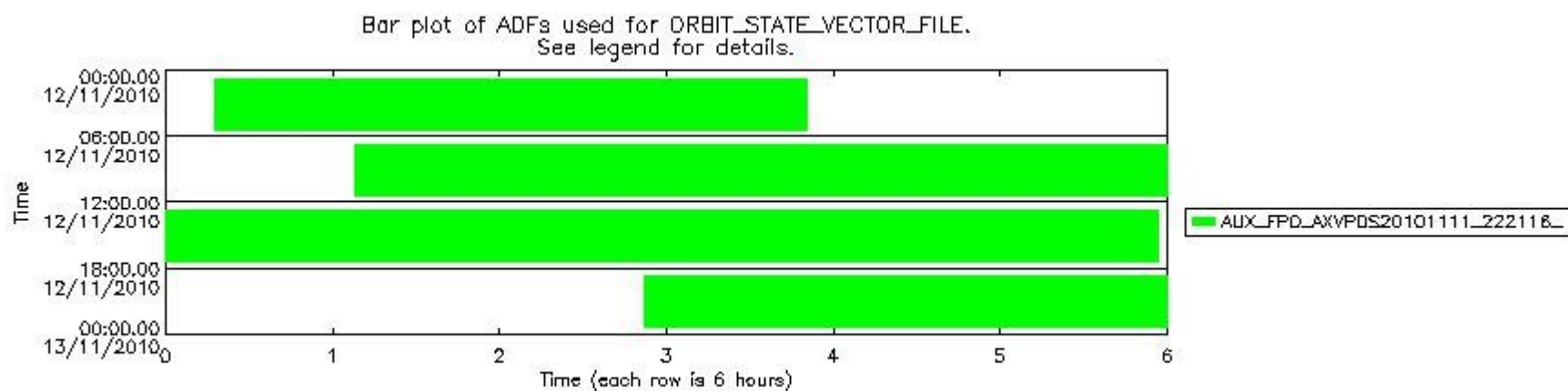
Number	ADF
0	AUX_CN0_AXVPDS20020123_121901_20020101_000000_20200101_000000
1	AUX_FPO_AXVPDS20101111_222116_20101111_192744_20101121_200125

Number	Product name	#CN0	#FPO
0	MIP_NL_0PNPDE20101112_001733_000058683096_00217_45490_1839.N1	0	1

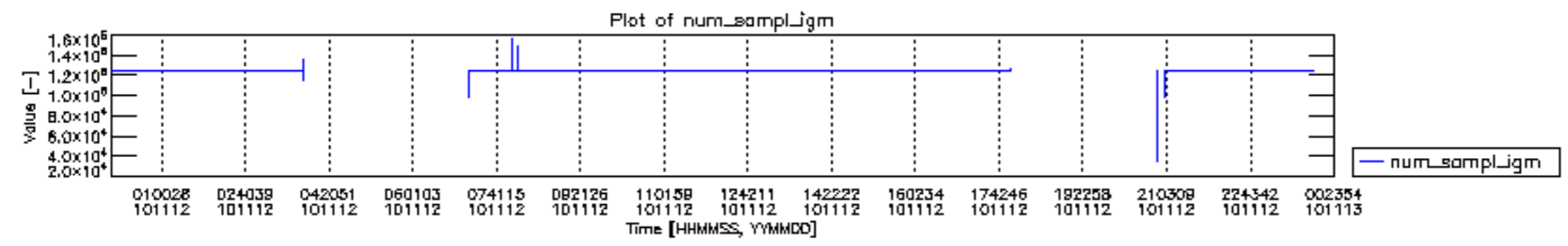
1	MIP_NL__0PNPDE20101112_015423_000044233096_00218_45491_1840.N1	0	1
2	MIP_NL__0PNPDE20101112_030732_000025553096_00219_45492_1841.N1	0	1
3	MIP_NL__0PNPDK20101112_070809_000018153096_00221_45494_3250.N1	0	1
4	MIP_NL__0PNPDK20101112_073700_000061143096_00222_45495_3251.N1	0	1
5	MIP_NL__0PNPDK20101112_091756_000059003096_00223_45496_3253.N1	0	1
6	MIP_NL__0PNPDK20101112_105509_000061093096_00224_45497_3254.N1	0	1
7	MIP_NL__0PNPDK20101112_123559_000059413096_00225_45498_3255.N1	0	1
8	MIP_NL__0PNPDK20101112_141404_000059853096_00226_45499_3256.N1	0	1
9	MIP_NL__0PNPDK20101112_155257_000058493096_00227_45500_3257.N1	0	1
10	MIP_NL__0PNPDK20101112_172925_000016233096_00228_45501_3258.N1	0	1
11	MIP_NL__0PNPDE20101112_205214_000040033096_00230_45503_1842.N1	0	1
12	MIP_NL__0PNPDE20101112_215757_000062573096_00230_45503_1843.N1	0	1
13	MIP_NL__0PNPDE20101112_234107_000058913096_00231_45504_1844.N1	0	1

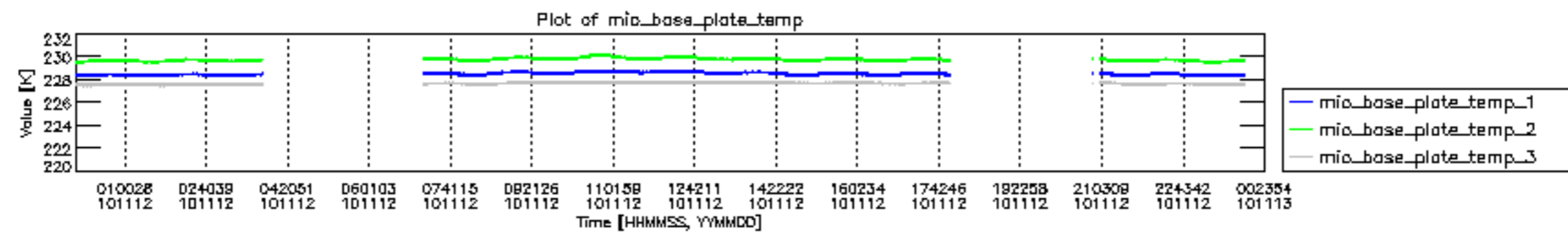


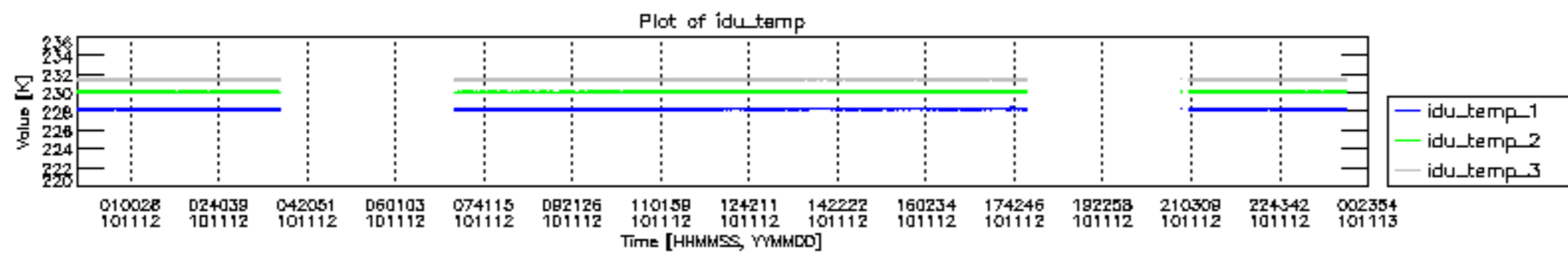
mipas_daily_report_level0_KSPT_L0_4504_N_20101112_12.PNG

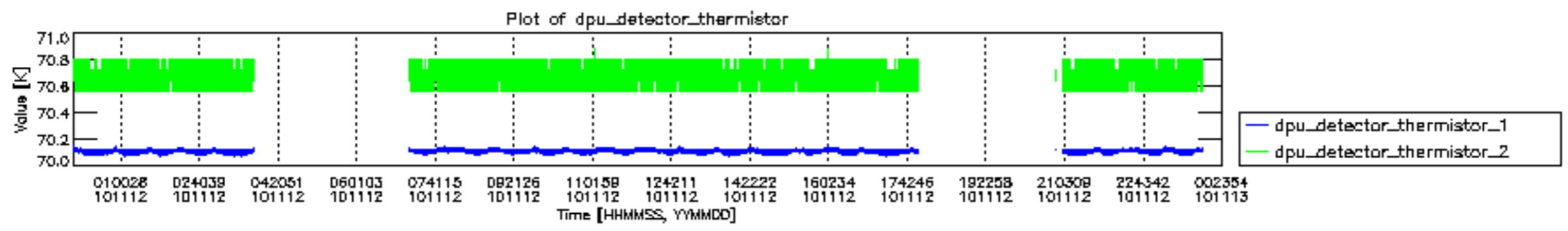


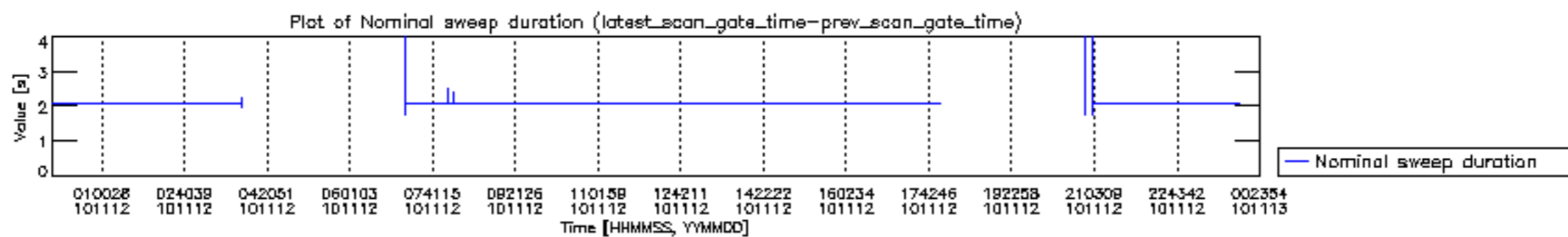
mipas_daily_report_level0_KSPT_L0_4504_N_20101112_13.PNG

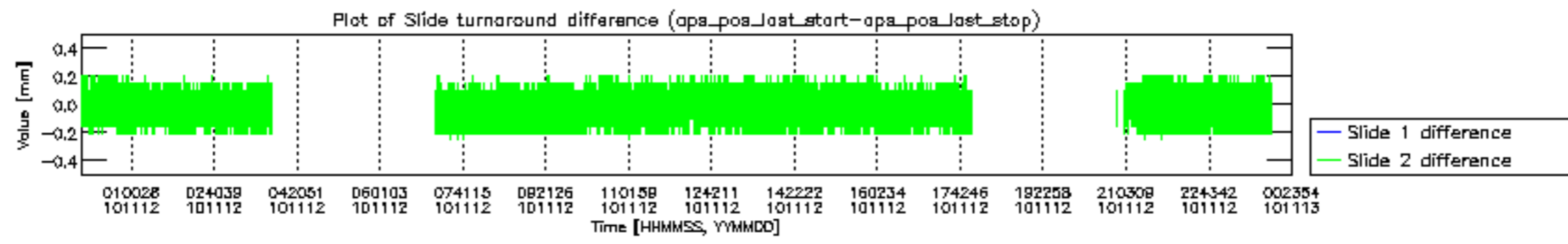


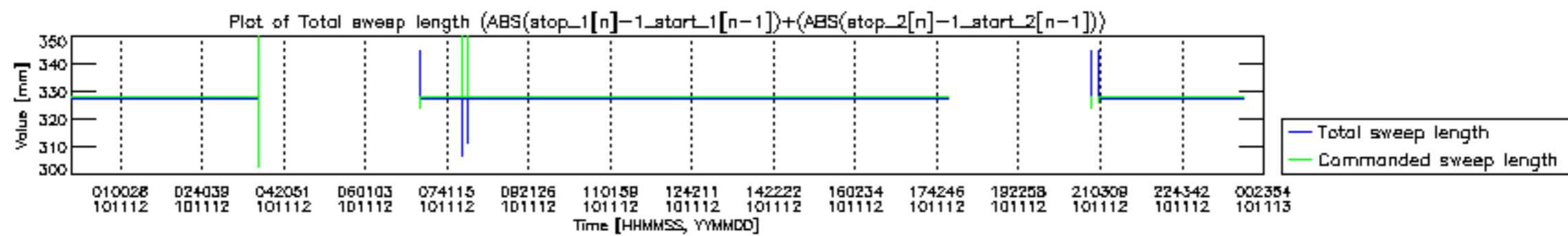


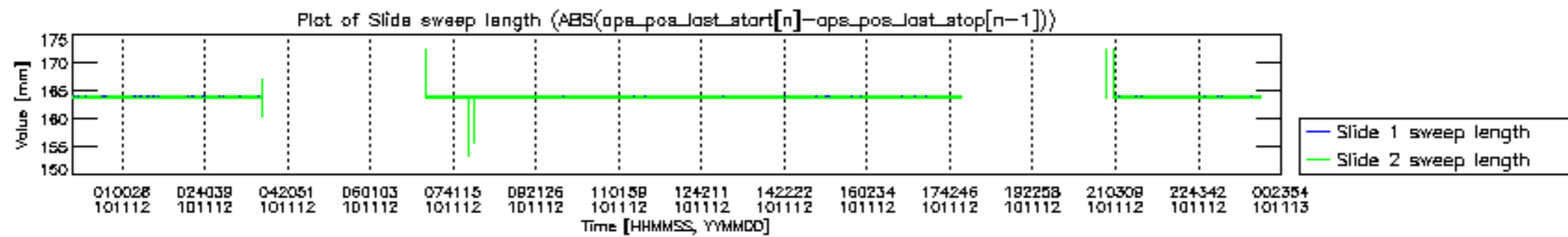


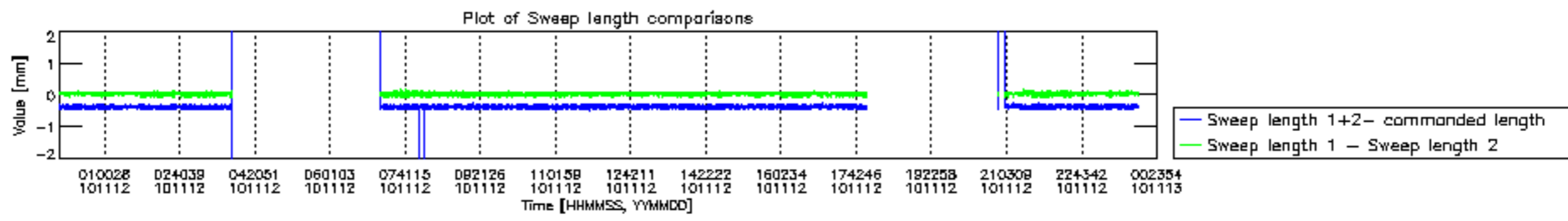


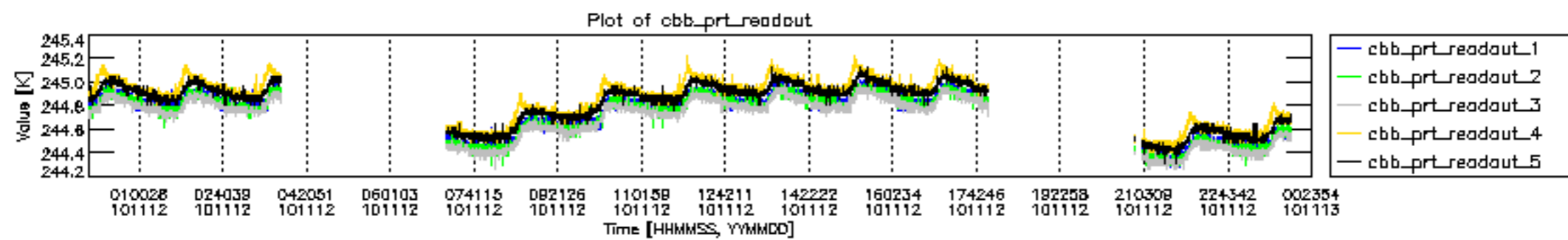


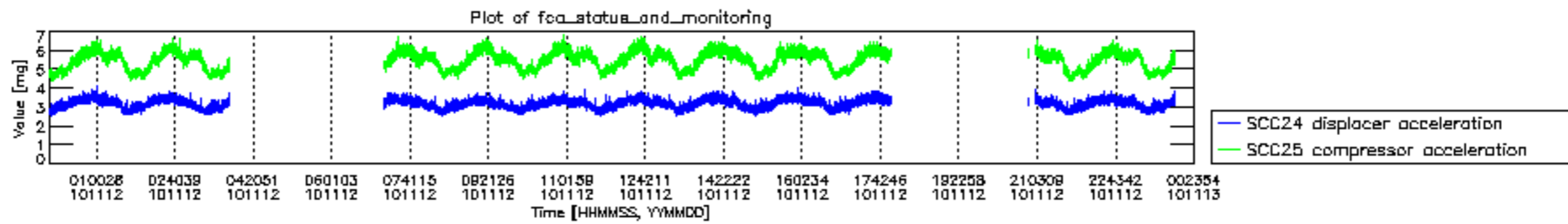












MIPNLOP_MIPSOUPAC_aux_fields_igm_cal, channel statistics plot
 Colour indicates value.

