

## 0. MIPAS Daily Report for level 0 products

### [0.1 General Info](#)

### [0.2 Instrument Operational Performance Parameters](#)

### [0.3 ADF monitoring](#)

## 0.1 General Info

This report contains a daily analysis on parameters extracted from MIPAS level 0 data (The MIP\_NL\_\_0P product).

### 0.1.1 Report summary

The table below shows general characteristics of the data that are included into this report.

Item	Value
Report version	v1.6 08-11-2010
Time of report generation	11NOV2010 05:21:50
Data source version	KSPT_L0/4504-N
Processing scope for products	06NOV2010 00:00:00 to 07NOV2010 00:00:00
Start time of first product within scope	06NOV2010 00:35:50
Stop time of last product within scope	07NOV2010 01:39:59
Total number of level 0 products	16
Number of level 0 products with errors	0

### 0.1.2 Product Quality Indicators per product

The following table shows a summary for each product used in this report.

#	Product name	Start time	Stop time	Prod err	ISP err sign	ISP miss sign	ISP disc sign	rs sign
0	MIP_NL__0PNPDE20101106_003550_000058453096_00131_45404_1795.N1	06NOV2010 00:35:50	06NOV2010 02:13:15	0	0	0	0	0
1	MIP_NL__0PNPDE20101106_021212_000045503096_00132_45405_1796.N1	06NOV2010 02:12:12	06NOV2010 03:28:02	0	0	0	0	0
2	MIP_NL__0PNPDE20101106_032729_000061613096_00133_45406_1797.N1	06NOV2010 03:27:29	06NOV2010 05:10:09	0	0	0	0	0
3	MIP_NL__0PNPDE20101106_050936_000060463096_00134_45407_1798.N1	06NOV2010 05:09:36	06NOV2010 06:50:22	0	0	0	0	0
4	MIP_NL__0PNPDK20101106_064948_000039633096_00135_45408_3196.N1	06NOV2010 06:49:48	06NOV2010 07:55:51	0	0	0	0	0
5	MIP_NL__0PNPDK20101106_075425_000063263096_00136_45409_3197.N1	06NOV2010 07:54:25	06NOV2010 09:39:52	0	0	0	0	0
6	MIP_NL__0PNPDK20101106_093849_000058413096_00137_45410_3198.N1	06NOV2010 09:38:49	06NOV2010 11:16:10	0	0	0	0	0
7	MIP_NL__0PNPDK20101106_111511_000060713096_00138_45411_3199.N1	06NOV2010 11:15:11	06NOV2010 12:56:22	0	0	0	0	0
8	MIP_NL__0PNPDK20101106_125524_000060233096_00139_45412_3200.N1	06NOV2010 12:55:24	06NOV2010 14:35:47	0	0	0	0	0
9	MIP_NL__0PNPDK20101106_143448_000058453096_00140_45413_3201.N1	06NOV2010 14:34:48	06NOV2010 16:12:13	0	0	0	0	0
10	MIP_NL__0PNPDK20101106_161140_000058703096_00141_45414_3202.N1	06NOV2010 16:11:40	06NOV2010 17:49:30	0	0	0	0	0
11	MIP_NL__0PNPDK20101106_174829_000059753096_00142_45415_3203.N1	06NOV2010 17:48:29	06NOV2010 19:28:04	0	0	0	0	0
12	MIP_NL__0PNPDK20101106_192607_000062133096_00143_45416_3204.N1	06NOV2010 19:26:07	06NOV2010 21:09:40	0	0	0	0	0
13	MIP_NL__0PNPDE20101106_210806_000042643096_00144_45417_1799.N1	06NOV2010 21:08:06	06NOV2010 22:19:10	0	0	0	0	0
14	MIP_NL__0PNPDE20101106_221803_000061133096_00144_45417_1800.N1	06NOV2010 22:18:03	06NOV2010 23:59:55	0	0	0	0	0
15	MIP_NL__0PNPDE20101106_235855_000060653096_00145_45418_1806.N1	06NOV2010 23:58:55	07NOV2010 01:39:59	0	0	0	0	0

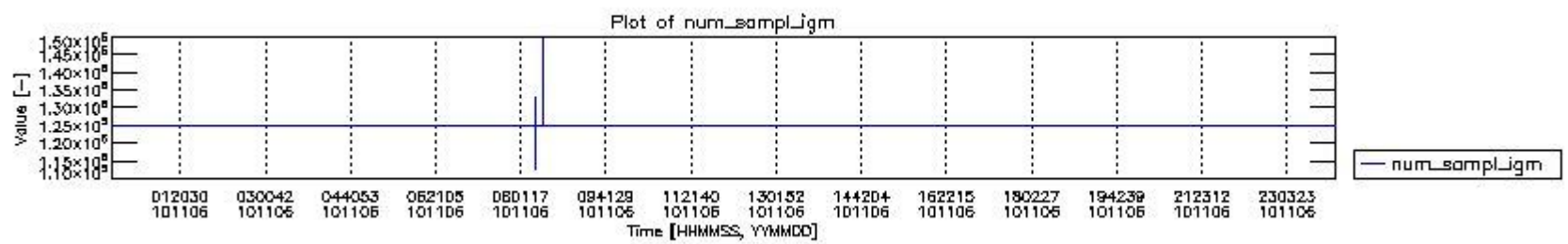
## 0.2 Instrument Operational Performance Parameters

The following plots give an overview of various instrument parameters for this day. The instrument parameters are part of the auxiliary data field within the source packets of the MIP\_NL\_\_0P product. The auxiliary data is normally included twice per interferogram. Note that only the first packet is currently included in monitoring.

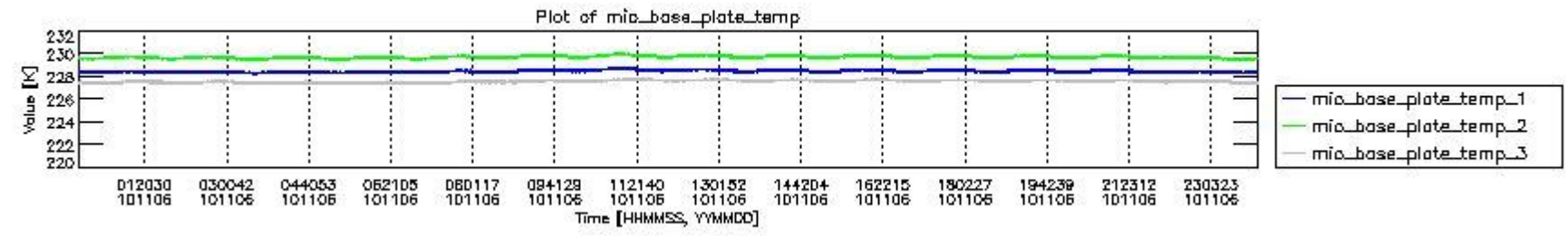
The following table shows the counts of various interferogram number of samples

Number of igm samples	Count [#]	Count [%]
112885	1	0.0024006146
121102	1	0.0024006146

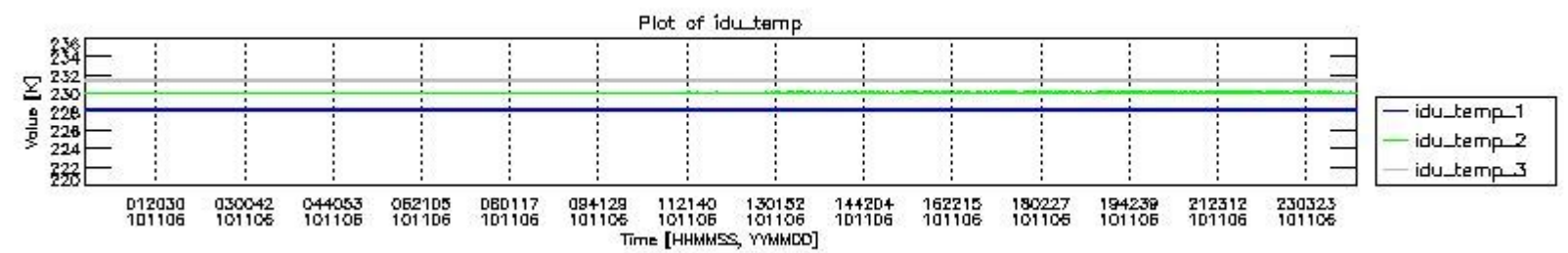
124800	38694	92.889380
124803	2956	7.0962166
127159	1	0.0024006146
133017	1	0.0024006146
147291	1	0.0024006146
149650	1	0.0024006146



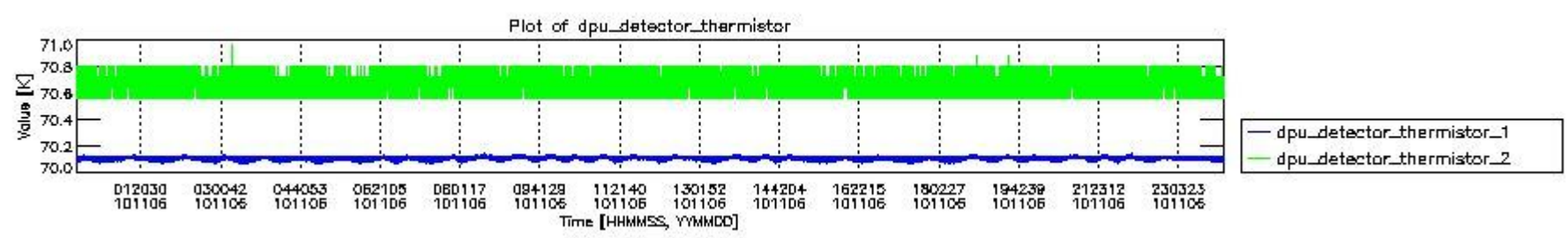
mipas\_daily\_report\_level0\_KSPT\_L0\_4504\_N\_20101106\_0.PNG



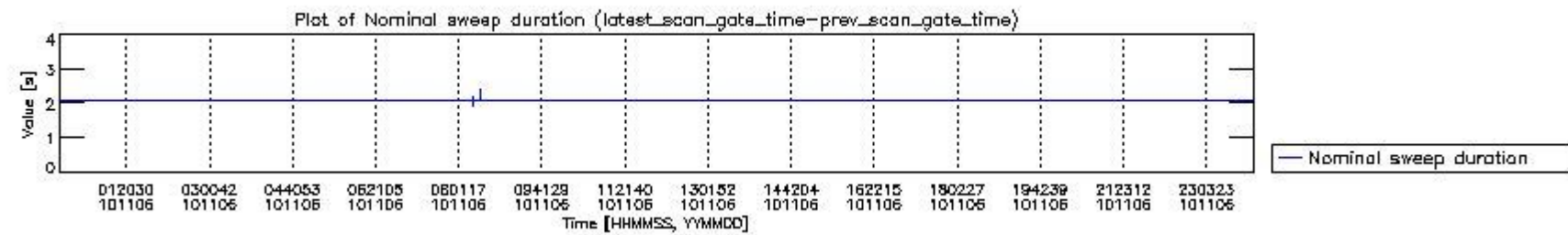
mipas\_daily\_report\_level0\_KSPT\_L0\_4504\_N\_20101106\_1.PNG



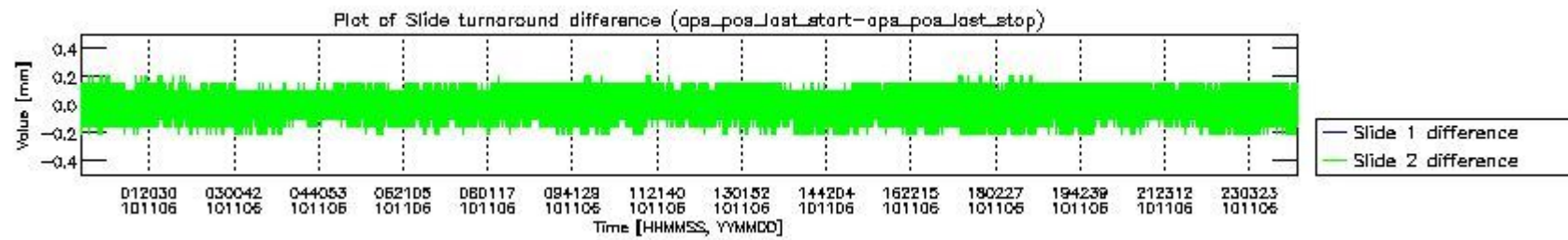
mipas\_daily\_report\_level0\_KSPT\_L0\_4504\_N\_20101106\_2.PNG



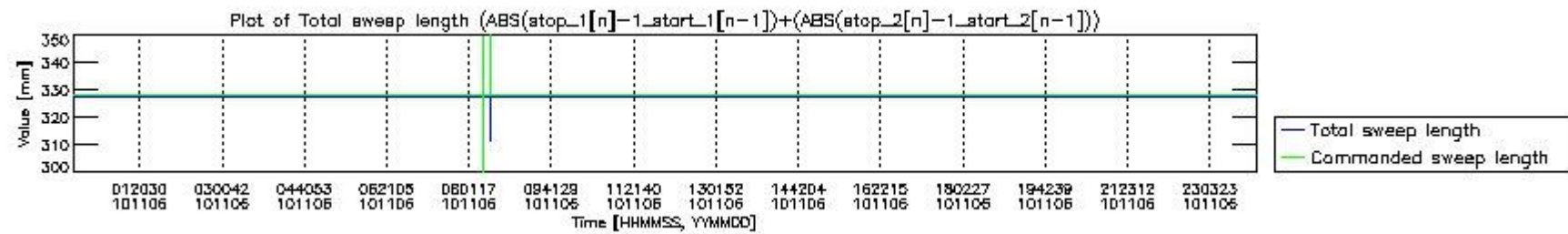
mipas\_daily\_report\_level0\_KSPT\_L0\_4504\_N\_20101106\_3.PNG



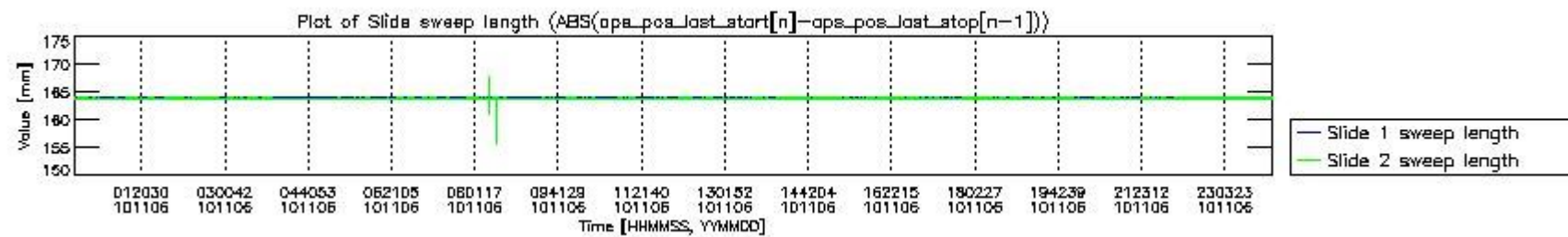
mipas\_daily\_report\_level0\_KSPT\_L0\_4504\_N\_20101106\_4.PNG



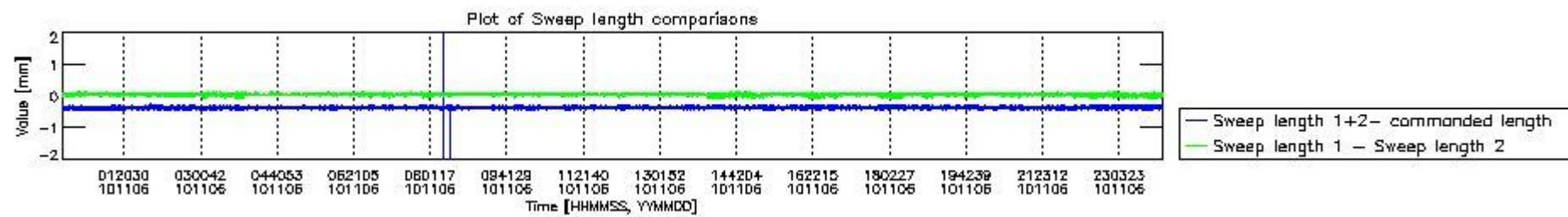
mipas\_daily\_report\_level0\_KSPT\_L0\_4504\_N\_20101106\_5.PNG



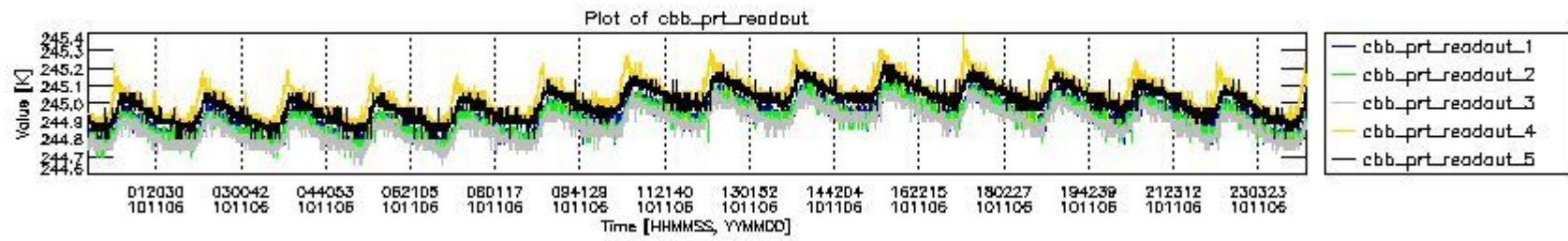
mipas\_daily\_report\_level0\_KSPT\_L0\_4504\_N\_20101106\_6.PNG



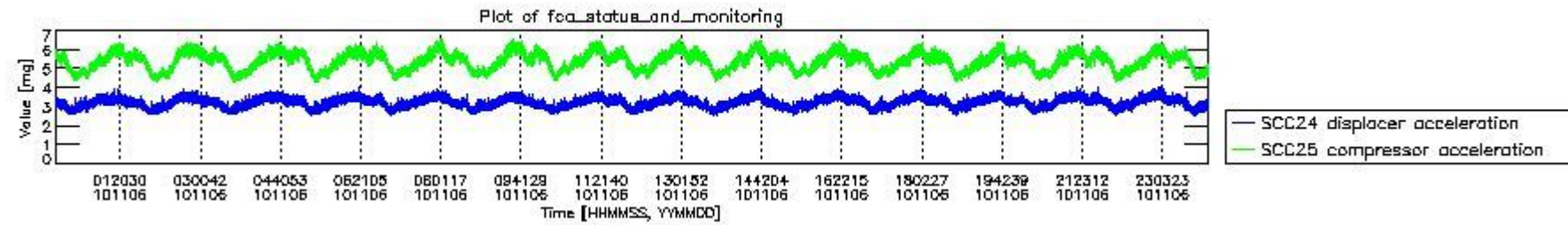
mipas\_daily\_report\_level0\_KSPT\_L0\_4504\_N\_20101106\_7.PNG



mipas\_daily\_report\_level0\_KSPT\_L0\_4504\_N\_20101106\_8.PNG



mipas\_daily\_report\_level0\_KSPT\_L0\_4504\_N\_20101106\_9.PNG

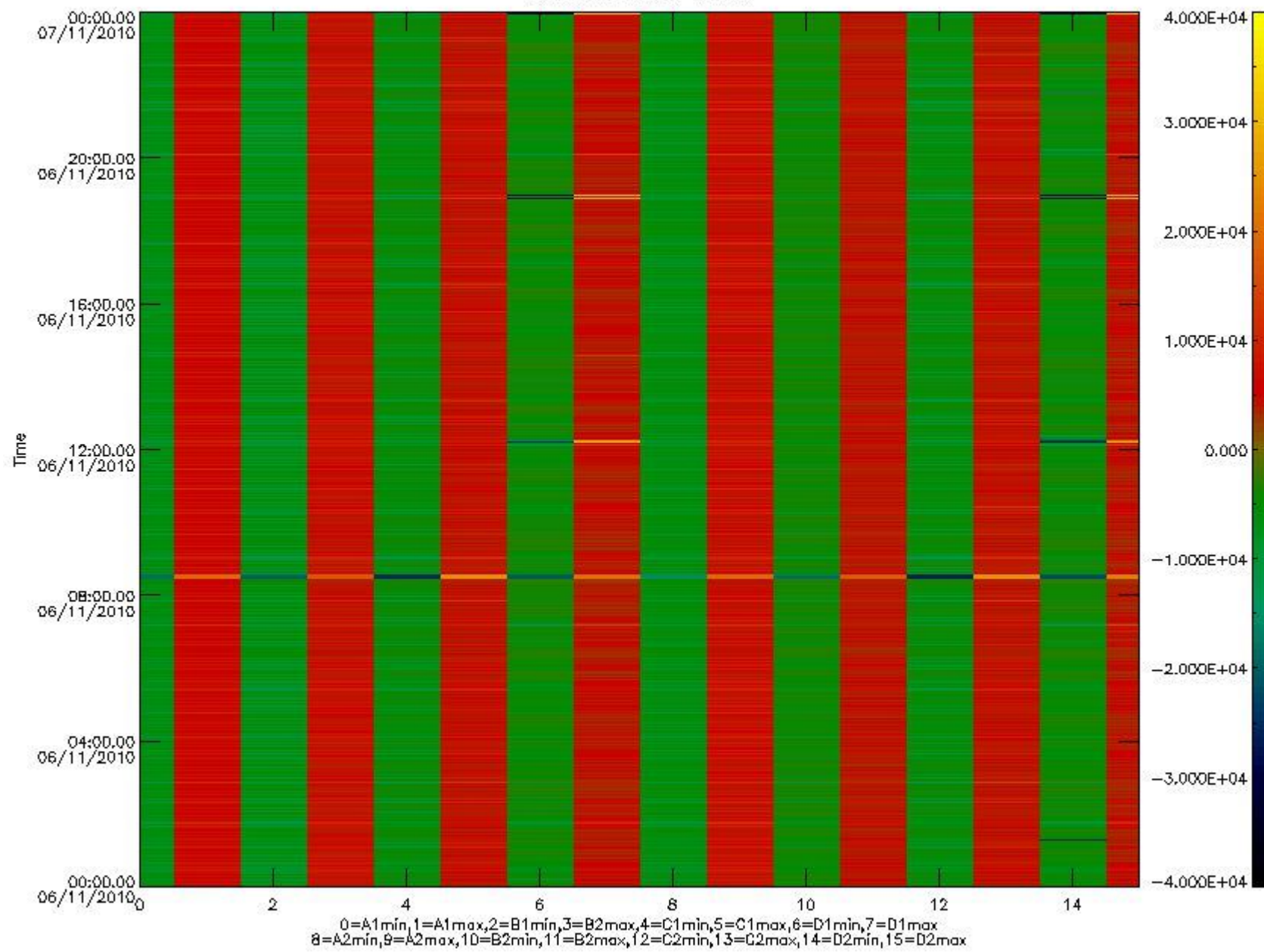


mipas\_daily\_report\_level0\_KSPT\_L0\_4504\_N\_20101106\_10.PNG

The following table shows channel statistics for all channels for this day.

Channel	Min	Max	ADC
A1	-18707	19922	16bit
B1	-20708	17805	16bit
C1	-25254	25141	16bit
D1	-32768	32767	16bit
A2	-16113	19999	16bit
B2	-18864	18424	16bit
C2	-26260	25862	16bit
D2	-32768	32767	16bit

MIPNLOP\_MIPSOUPAC\_aux\_fields\_igm\_cal, channel statistics plot  
Colour indicates value.



mipas\_daily\_report\_level0\_KSPT\_L0\_4504\_N\_20101106\_11.PNG

### 0.3 ADF monitoring

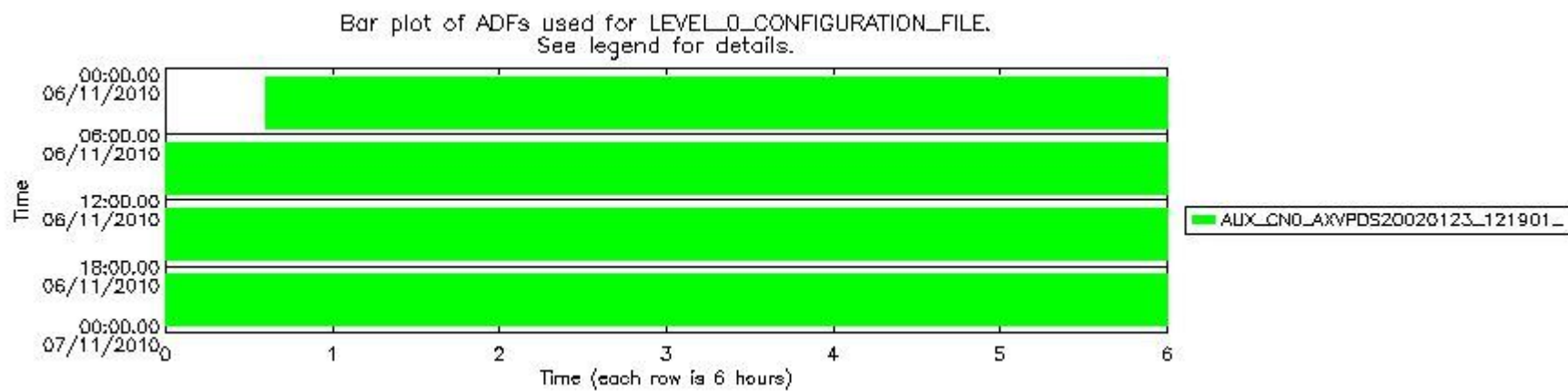
The use of ADFs is shown in two ways:

1. By means of two tables that can be used to find the ADF used for a specific product.
2. By means of plots that show changes in ADF using colours.

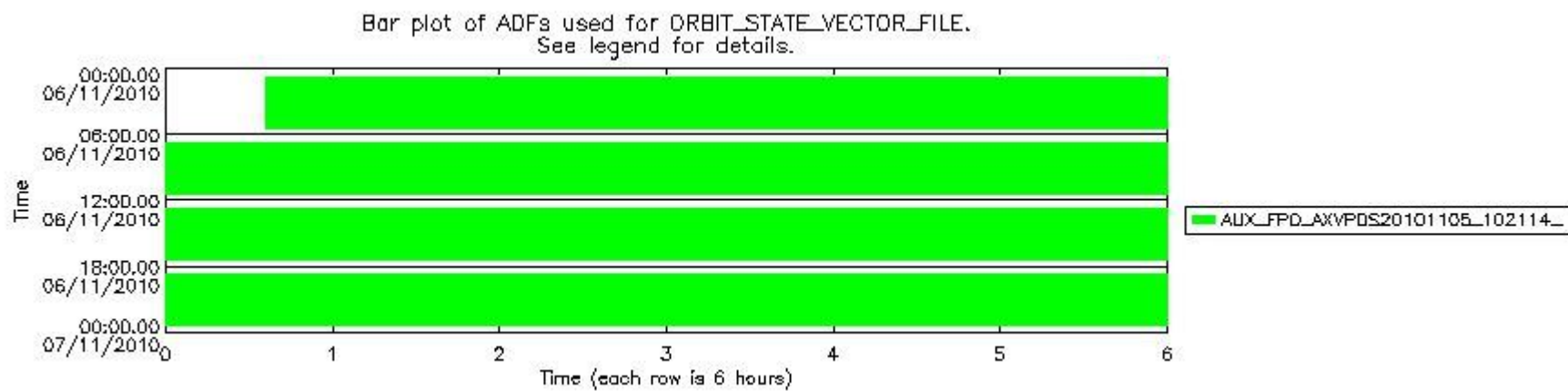
Number	ADF
0	AUX_CN0_AXVPDS20020123_121901_20020101_000000_20200101_000000
1	AUX_FPO_AXVPDS20101105_102114_20101104_184405_20101114_205801

Number	Product name	#CN0	#FPO
0	MIP_NL_0PNPDE20101106_003550_000058453096_00131_45404_1795.N1	0	1

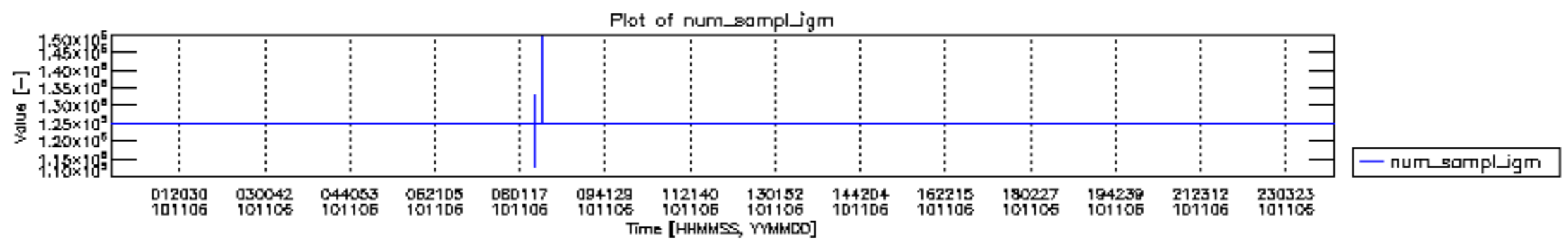
1	MIP_NL__0PNPDE20101106_021212_000045503096_00132_45405_1796.N1	0	1
2	MIP_NL__0PNPDE20101106_032729_000061613096_00133_45406_1797.N1	0	1
3	MIP_NL__0PNPDE20101106_050936_000060463096_00134_45407_1798.N1	0	1
4	MIP_NL__0PNPDK20101106_064948_000039633096_00135_45408_3196.N1	0	1
5	MIP_NL__0PNPDK20101106_075425_000063263096_00136_45409_3197.N1	0	1
6	MIP_NL__0PNPDK20101106_093849_000058413096_00137_45410_3198.N1	0	1
7	MIP_NL__0PNPDK20101106_111511_000060713096_00138_45411_3199.N1	0	1
8	MIP_NL__0PNPDK20101106_125524_000060233096_00139_45412_3200.N1	0	1
9	MIP_NL__0PNPDK20101106_143448_000058453096_00140_45413_3201.N1	0	1
10	MIP_NL__0PNPDK20101106_161140_000058703096_00141_45414_3202.N1	0	1
11	MIP_NL__0PNPDK20101106_174829_000059753096_00142_45415_3203.N1	0	1
12	MIP_NL__0PNPDK20101106_192607_000062133096_00143_45416_3204.N1	0	1
13	MIP_NL__0PNPDE20101106_210806_000042643096_00144_45417_1799.N1	0	1
14	MIP_NL__0PNPDE20101106_221803_000061133096_00144_45417_1800.N1	0	1
15	MIP_NL__0PNPDE20101106_235855_000060653096_00145_45418_1806.N1	0	1

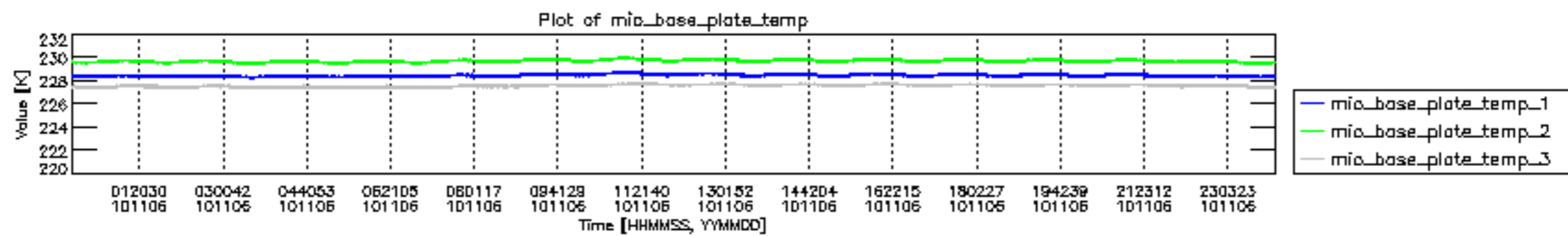


mipas\_daily\_report\_level0\_KSPT\_L0\_4504\_N\_20101106\_12.PNG

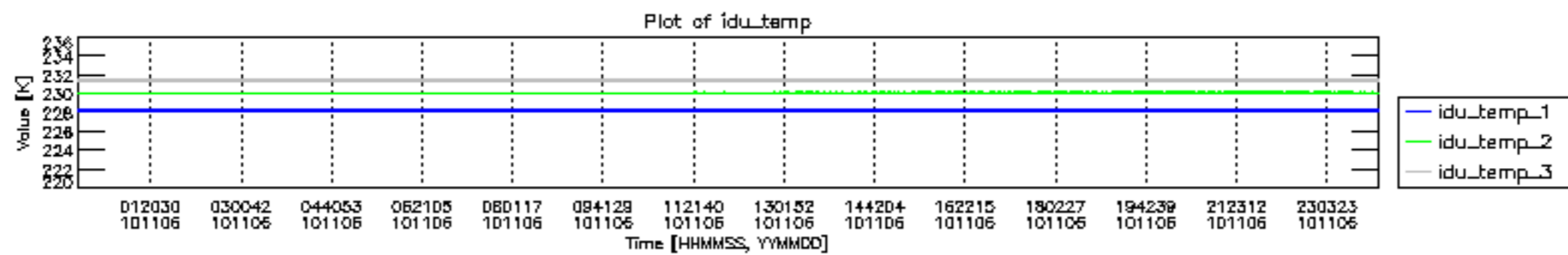


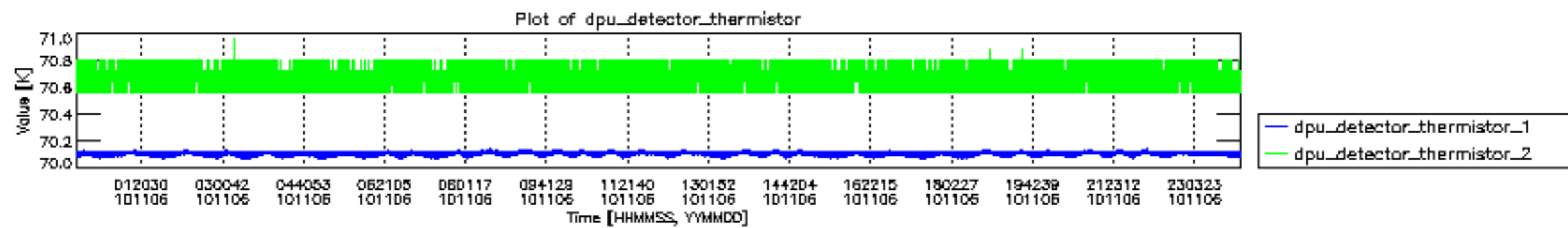
mipas\_daily\_report\_level0\_KSPT\_L0\_4504\_N\_20101106\_13.PNG

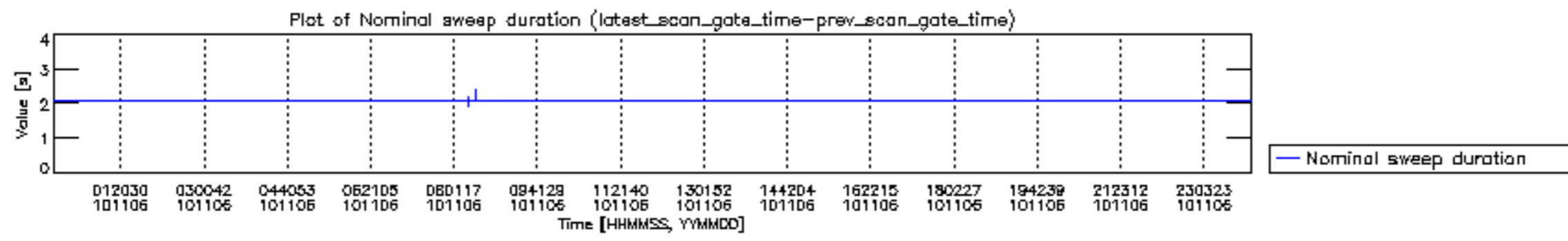


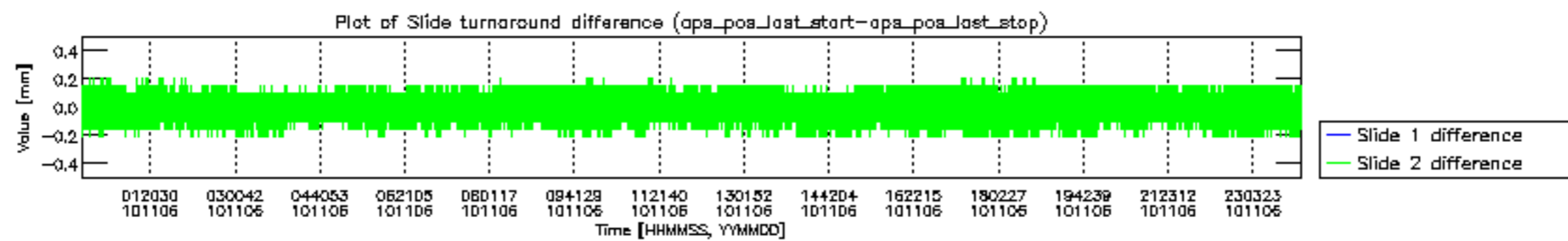


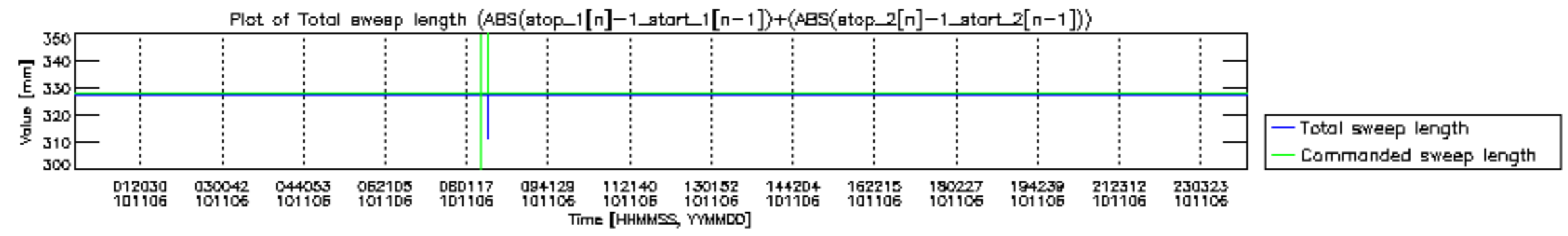


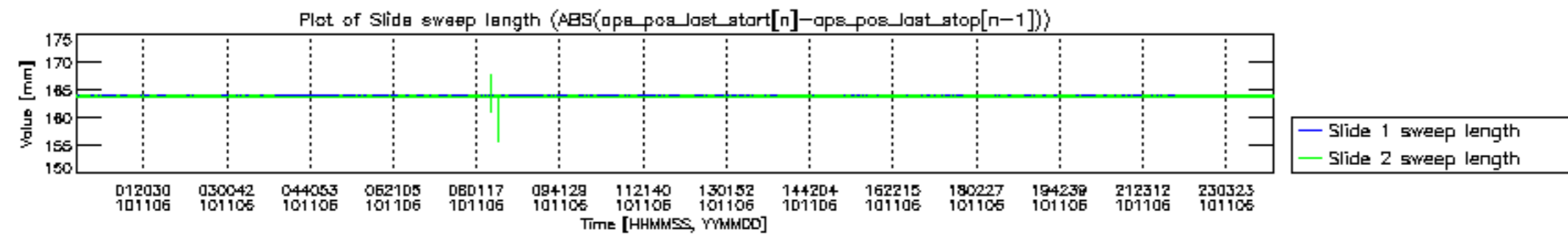


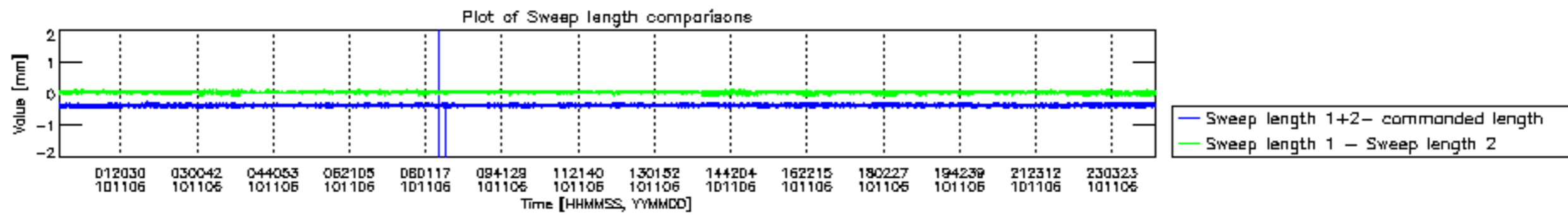


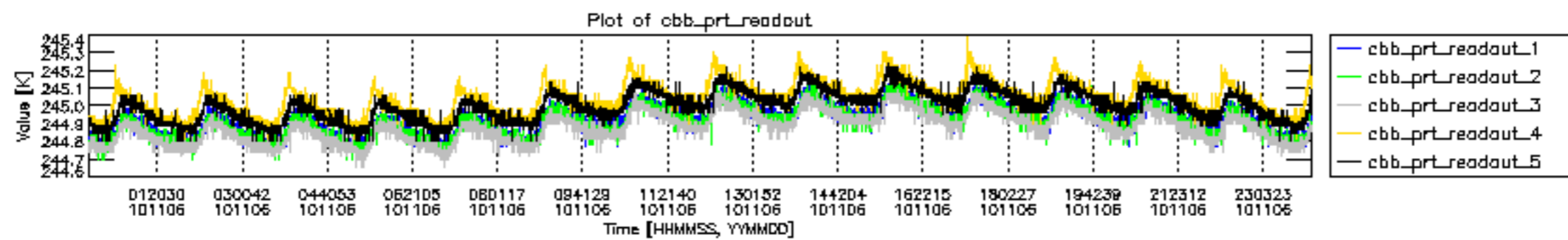




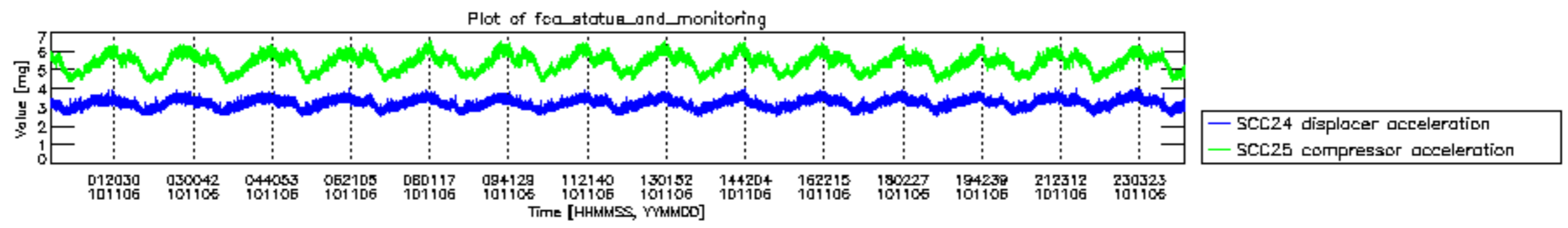












MIPNLOP\_MIPSOUPAC\_aux\_fields\_igm\_cal, channel statistics plot  
 Colour indicates value.

