

0. MIPAS Daily Report for level 0 products

[0.1 General Info](#)

[0.2 Instrument Operational Performance Parameters](#)

[0.3 ADF monitoring](#)

0.1 General Info

This report contains a daily analysis on parameters extracted from MIPAS level 0 data (The MIP_NL__0P product).

0.1.1 Report summary

The table below shows general characteristics of the data that are included into this report.

Item	Value
Report version	v1.5 2008-02-08
Time of report generation	10NOV2010 05:23:58
Data source version	KSPT_L0/4504-N
Processing scope for products	05NOV2010 00:00:00 to 06NOV2010 00:00:00
Start time of first product within scope	05NOV2010 01:11:40
Stop time of last product within scope	06NOV2010 00:36:56
Total number of level 0 products	15
Number of level 0 products with errors	0

0.1.2 Product Quality Indicators per product

The following table shows a summary for each product used in this report.

#	Product name	Start time	Stop time	Prod err	ISP err sign	ISP miss sign	ISP disc sign	rs sign
0	MIP_NL__0PNPDE20101105_011140_000102433096_00117_45390_1787.N1	05NOV2010 01:11:40	05NOV2010 04:02:23	0	0	0	0	0
1	MIP_NL__0PNPDE20101105_015501_000076423096_00118_45391_1788.N1	05NOV2010 01:55:01	05NOV2010 04:02:23	0	0	0	0	0
2	MIP_NL__0PNPDE20101105_040145_000063153096_00119_45392_1790.N1	05NOV2010 04:01:45	05NOV2010 05:47:00	0	0	0	0	0
3	MIP_NL__0PNPDE20101105_054623_000061773096_00120_45393_1791.N1	05NOV2010 05:46:23	05NOV2010 07:29:20	0	0	0	0	0
4	MIP_NL__0PNPDK20101105_072842_000038333096_00121_45394_3188.N1	05NOV2010 07:28:42	05NOV2010 08:32:36	0	0	0	0	0
5	MIP_NL__0PNPDK20101105_083110_000060763096_00122_45395_3189.N1	05NOV2010 08:31:10	05NOV2010 10:12:26	0	0	0	0	0
6	MIP_NL__0PNPDK20101105_101115_000061983096_00123_45396_3190.N1	05NOV2010 10:11:15	05NOV2010 11:54:34	0	0	0	0	0
7	MIP_NL__0PNPDK20101105_115333_000058933096_00124_45397_3191.N1	05NOV2010 11:53:33	05NOV2010 13:31:46	0	0	0	0	0
8	MIP_NL__0PNPDK20101105_133046_000059563096_00125_45398_3192.N1	05NOV2010 13:30:46	05NOV2010 15:10:02	0	0	0	0	0
9	MIP_NL__0PNPDK20101105_150901_000059893096_00126_45399_3193.N1	05NOV2010 15:09:01	05NOV2010 16:48:51	0	0	0	0	0
10	MIP_NL__0PNPDK20101105_164815_000058333096_00127_45400_3194.N1	05NOV2010 16:48:15	05NOV2010 18:25:28	0	0	0	0	0
11	MIP_NL__0PNPDK20101105_182425_000059873096_00128_45401_3195.N1	05NOV2010 18:24:25	05NOV2010 20:04:13	0	0	0	0	0
12	MIP_NL__0PNPDE20101105_200203_000044943096_00129_45402_1792.N1	05NOV2010 20:02:03	05NOV2010 21:16:57	0	0	0	0	0
13	MIP_NL__0PNPDE20101105_211548_000061613096_00129_45402_1793.N1	05NOV2010 21:15:48	05NOV2010 22:58:29	0	0	0	0	0
14	MIP_NL__0PNPDE20101105_225720_000059773096_00130_45403_1794.N1	05NOV2010 22:57:20	06NOV2010 00:36:56	0	0	0	0	0

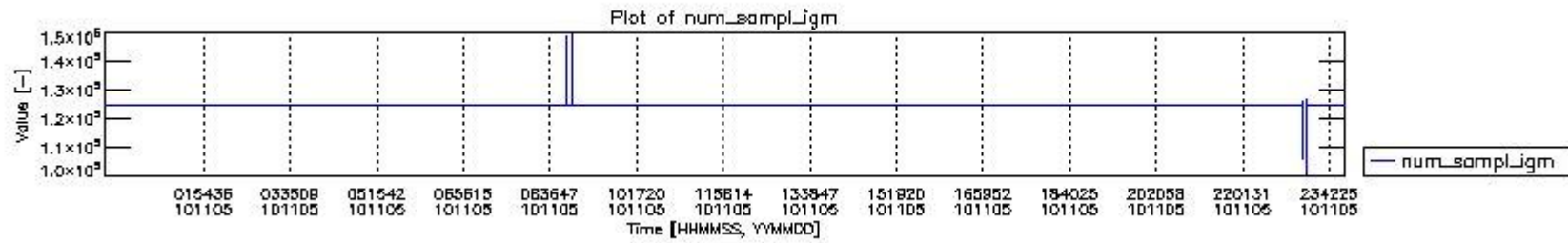
0.2 Instrument Operational Performance Parameters

The following plots give an overview of various instrument parameters for this day. The instrument parameters are part of the auxiliary data field within the source packets of the MIP_NL__0P product. The auxiliary data is normally included twice per interferogram. Note that only the first packet is currently included in monitoring.

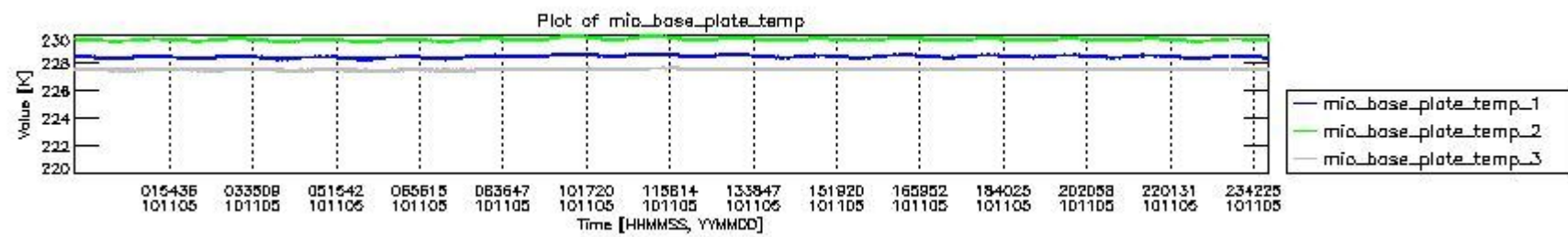
The following table shows the counts of various interferogram number of samples

Number of igm samples	Count [#]	Count [%]
100632	1	0.0024112654
106195	1	0.0024112654
107722	1	0.0024112654

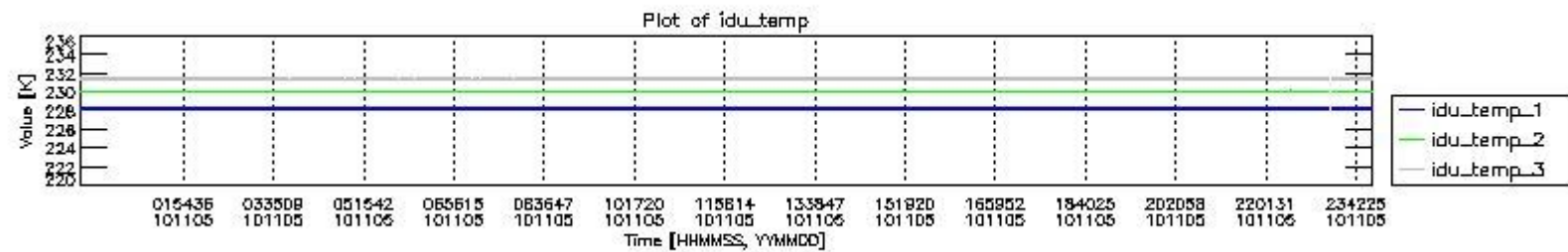
124800	39086	94.246721
124803	2374	5.7243441
125884	1	0.0024112654
126327	1	0.0024112654
126564	1	0.0024112654
126968	1	0.0024112654
127010	1	0.0024112654
146696	1	0.0024112654
147142	1	0.0024112654
148460	1	0.0024112654
149352	1	0.0024112654



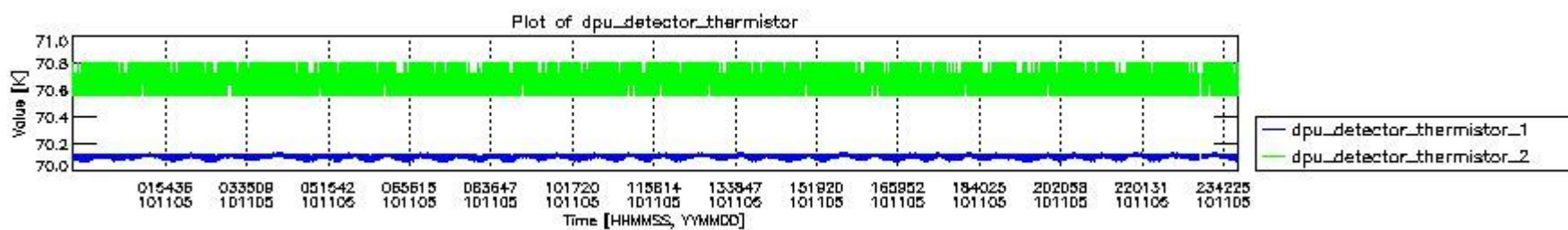
mipas_daily_report_level0_KSPT_L0_4504_N_20101105_0.PNG



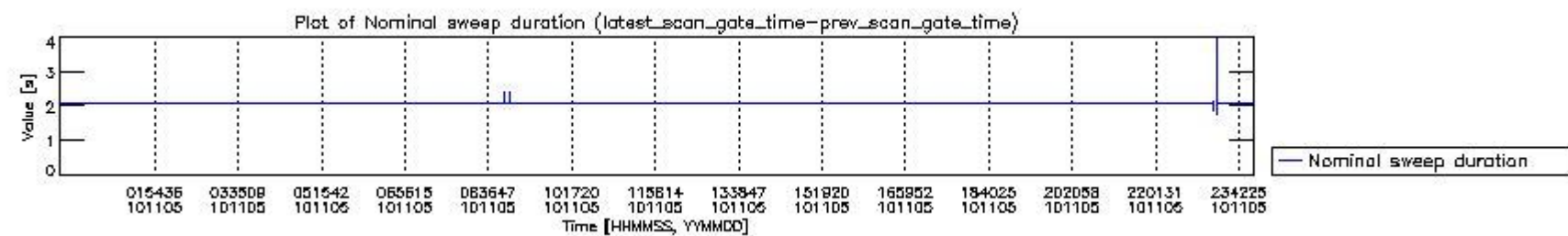
mipas_daily_report_level0_KSPT_L0_4504_N_20101105_1.PNG



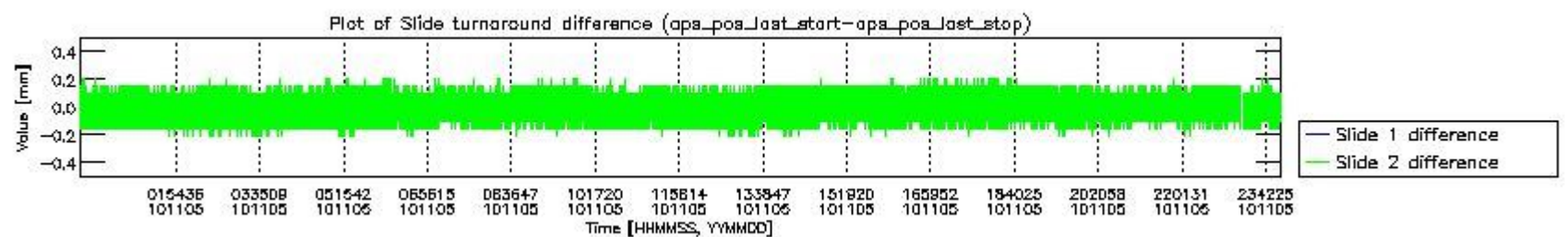
mipas_daily_report_level0_KSPT_L0_4504_N_20101105_2.PNG



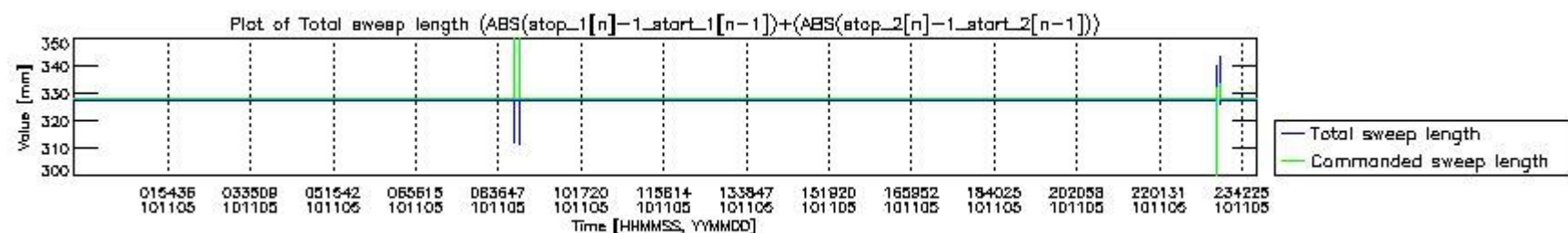
mipas_daily_report_level0_KSPT_L0_4504_N_20101105_3.PNG



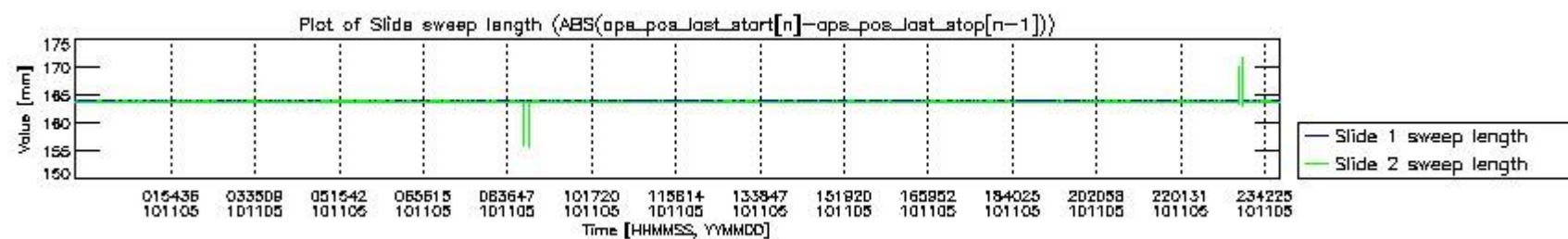
mipas_daily_report_level0_KSPT_L0_4504_N_20101105_4.PNG



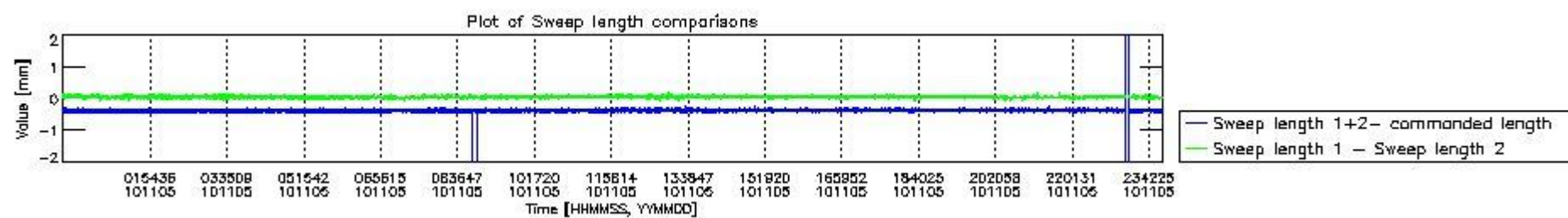
mipas_daily_report_level0_KSPT_L0_4504_N_20101105_5.PNG



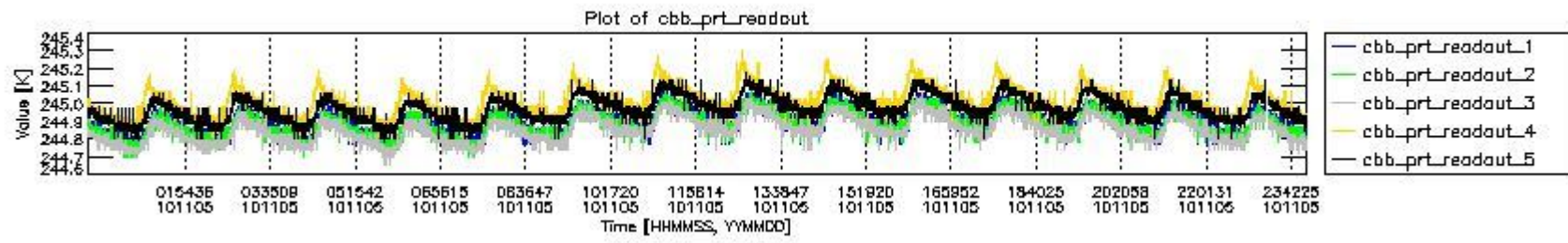
mipas_daily_report_level0_KSPT_L0_4504_N_20101105_6.PNG



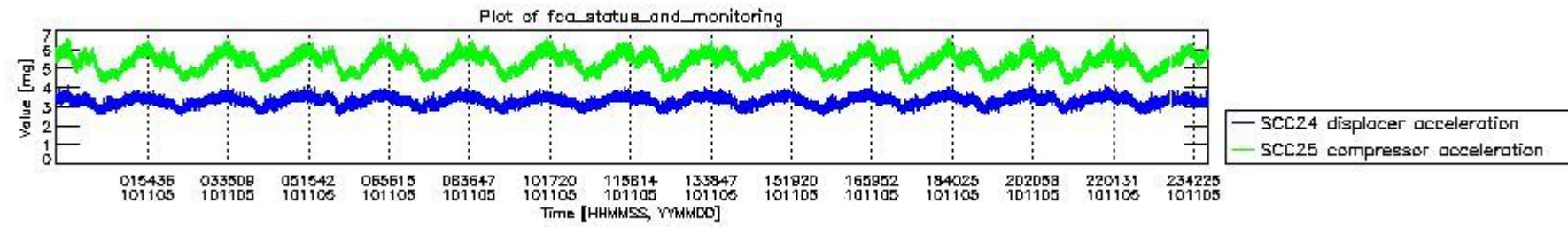
mipas_daily_report_level0_KSPT_L0_4504_N_20101105_7.PNG



mipas_daily_report_level0_KSPT_L0_4504_N_20101105_8.PNG



mipas_daily_report_level0_KSPT_L0_4504_N_20101105_9.PNG

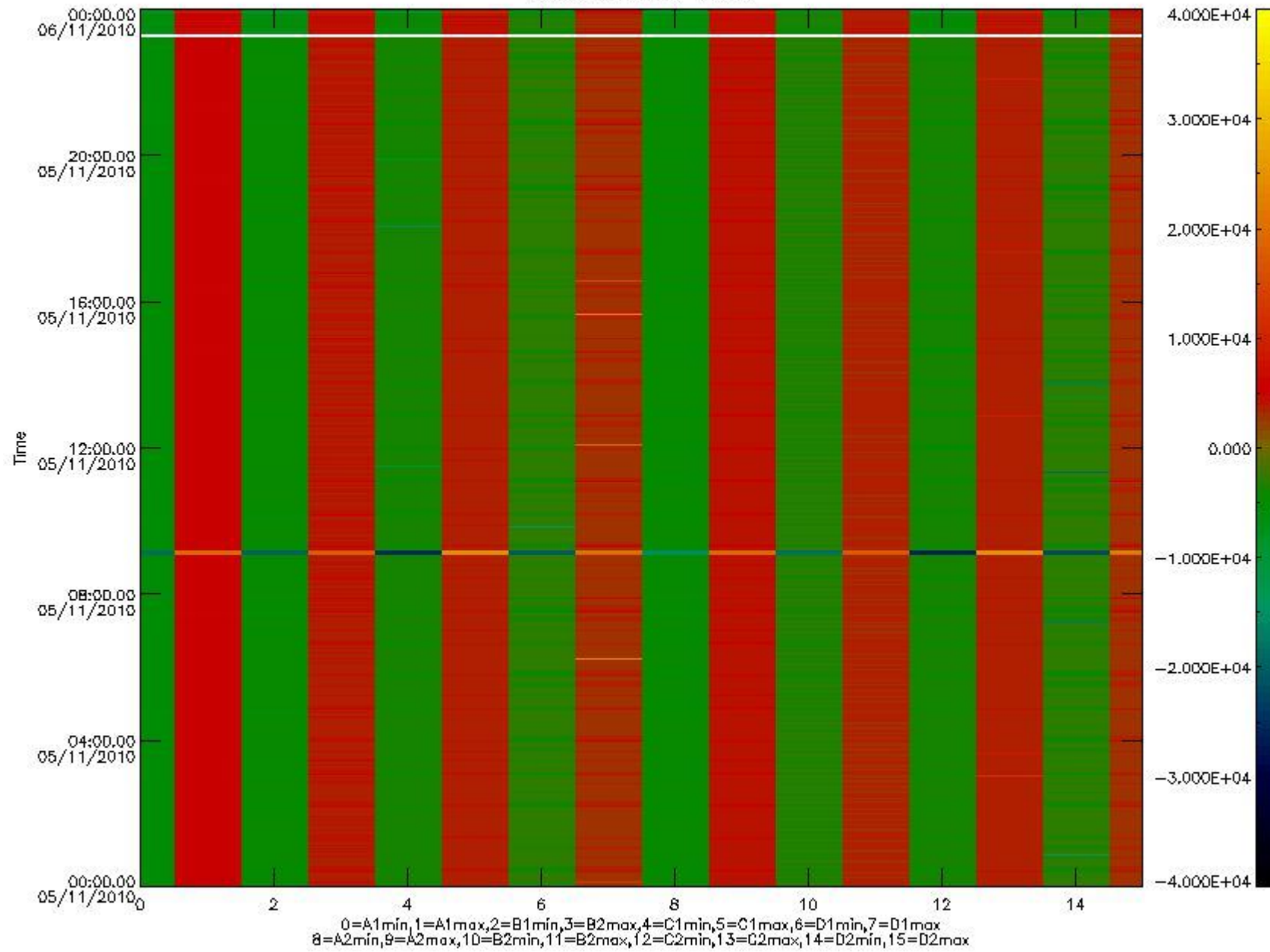


mipas_daily_report_level0_KSPT_L0_4504_N_20101105_10.PNG

The following table shows channel statistics for all channels for this day.

Channel	Min	Max	ADC
A1	-18722	19944	16bit
B1	-20745	17831	16bit
C1	-25336	25286	16bit
D1	-21194	32767	16bit
A2	-16145	20031	16bit
B2	-18888	18474	16bit
C2	-26323	26015	16bit
D2	-32768	23090	16bit

MIPNLOP_MIPSOUPAC_aux_fields_igm_cal, channel statistics plot
Colour indicates value.



mipas_daily_report_level0_KSPT_L0_4504_N_20101105_11.PNG

0.3 ADF monitoring

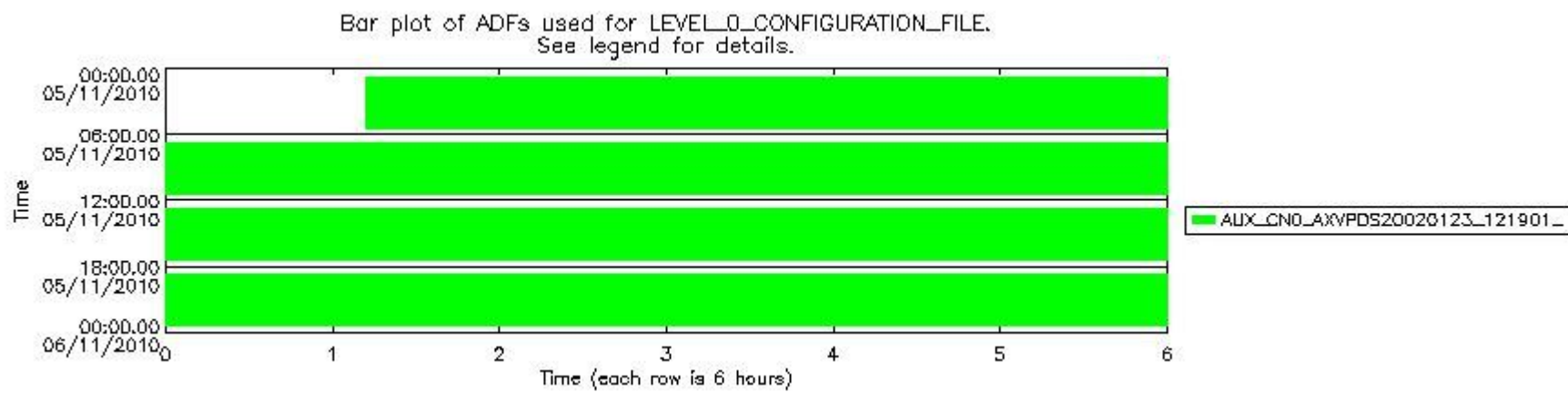
The use of ADFs is shown in two ways:

1. By means of two tables that can be used to find the ADF used for a specific product.
2. By means of plots that show changes in ADF using colours.

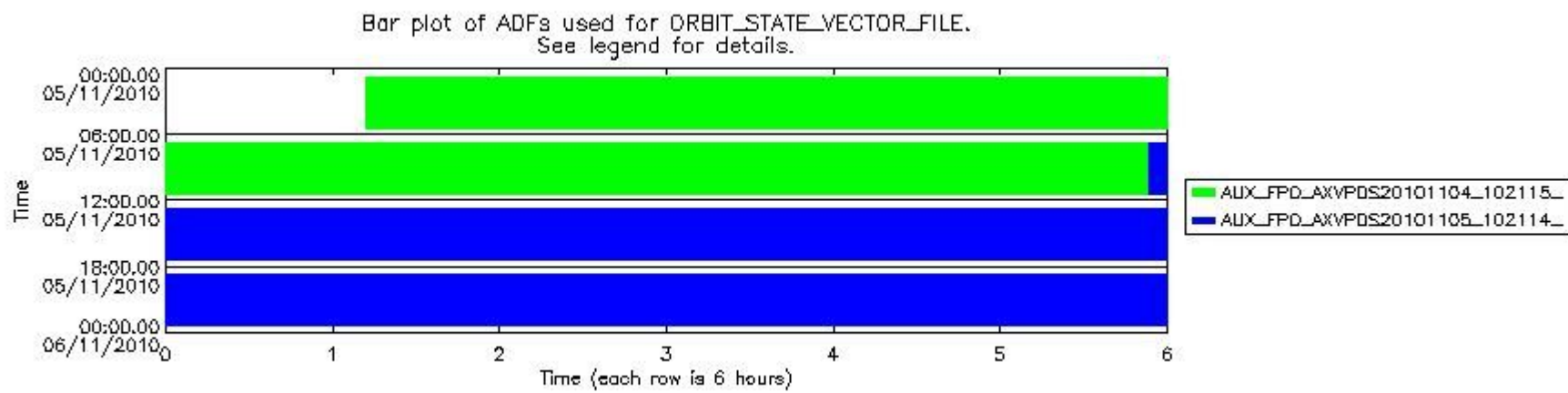
Number	ADF
0	AUX_CN0_AXVPDS20020123_121901_20020101_000000_20200101_000000
1	AUX_FPO_AXVPDS20101104_102115_20101104_084240_20101114_105637
2	AUX_FPO_AXVPDS20101105_102114_20101104_184405_20101114_205801

Number	Product name	#CN0	#FPO
--------	--------------	------	------

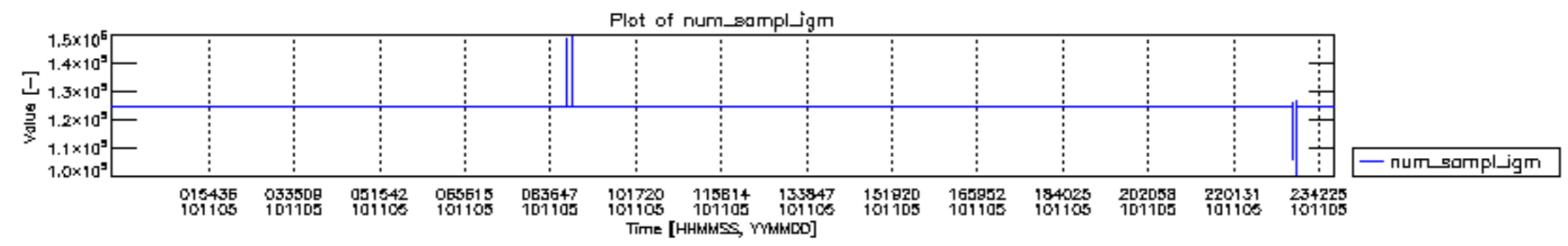
0	MIP_NL__0PNPDE20101105_011140_000102433096_00117_45390_1787.N1	0	1
1	MIP_NL__0PNPDE20101105_015501_000076423096_00118_45391_1788.N1	0	1
2	MIP_NL__0PNPDE20101105_040145_000063153096_00119_45392_1790.N1	0	1
3	MIP_NL__0PNPDE20101105_054623_000061773096_00120_45393_1791.N1	0	1
4	MIP_NL__0PNPDK20101105_072842_000038333096_00121_45394_3188.N1	0	1
5	MIP_NL__0PNPDK20101105_083110_000060763096_00122_45395_3189.N1	0	1
6	MIP_NL__0PNPDK20101105_101115_000061983096_00123_45396_3190.N1	0	1
7	MIP_NL__0PNPDK20101105_115333_000058933096_00124_45397_3191.N1	0	2
8	MIP_NL__0PNPDK20101105_133046_000059563096_00125_45398_3192.N1	0	2
9	MIP_NL__0PNPDK20101105_150901_000059893096_00126_45399_3193.N1	0	2
10	MIP_NL__0PNPDK20101105_164815_000058333096_00127_45400_3194.N1	0	2
11	MIP_NL__0PNPDK20101105_182425_000059873096_00128_45401_3195.N1	0	2
12	MIP_NL__0PNPDE20101105_200203_000044943096_00129_45402_1792.N1	0	2
13	MIP_NL__0PNPDE20101105_211548_000061613096_00129_45402_1793.N1	0	2
14	MIP_NL__0PNPDE20101105_225720_000059773096_00130_45403_1794.N1	0	2

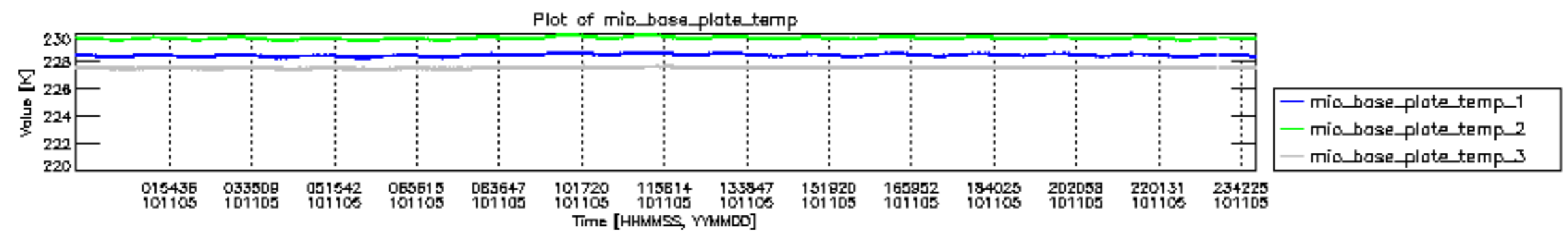


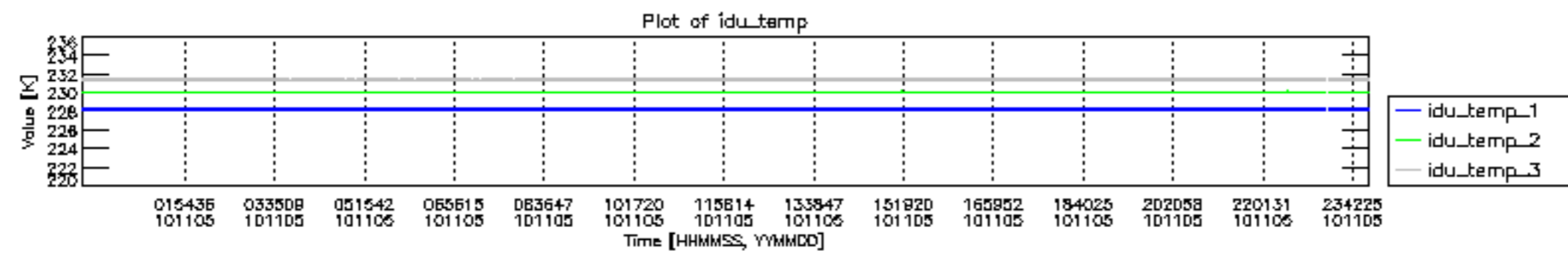
mipas_daily_report_level0_KSPT_L0_4504_N_20101105_12.PNG

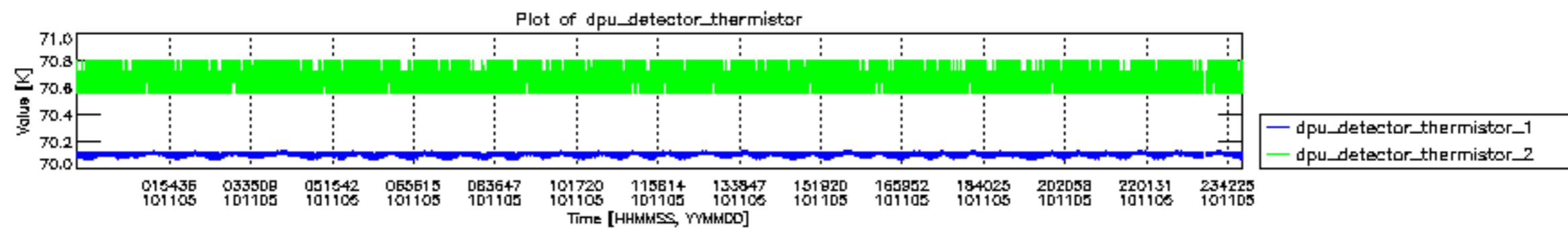


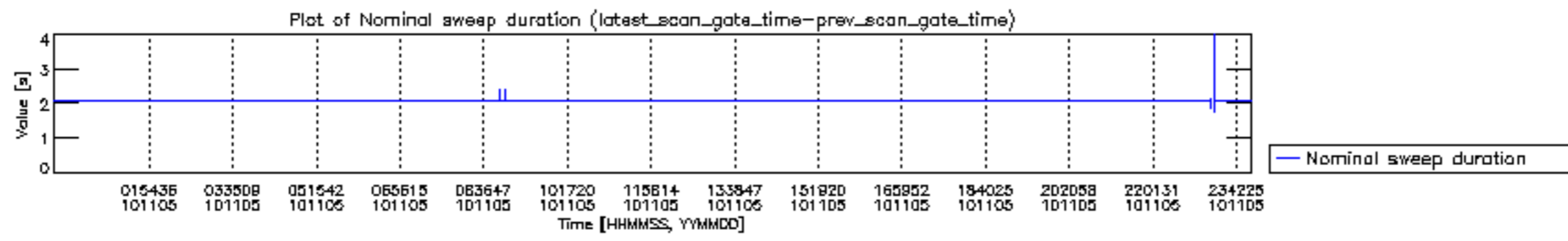
mipas_daily_report_level0_KSPT_L0_4504_N_20101105_13.PNG

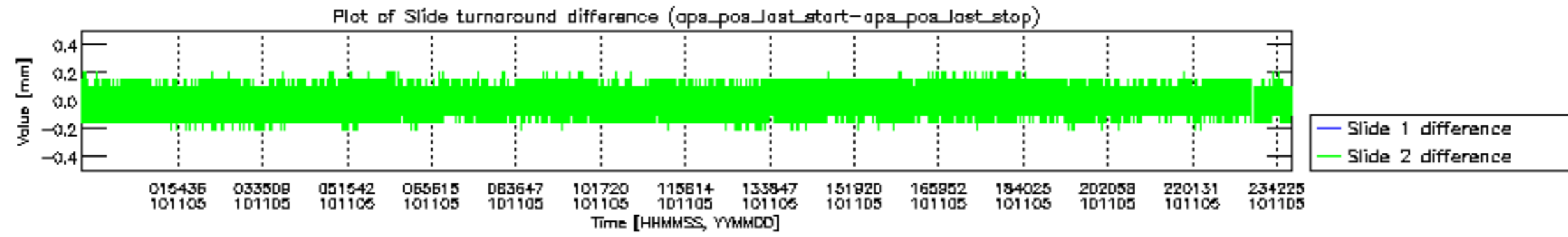


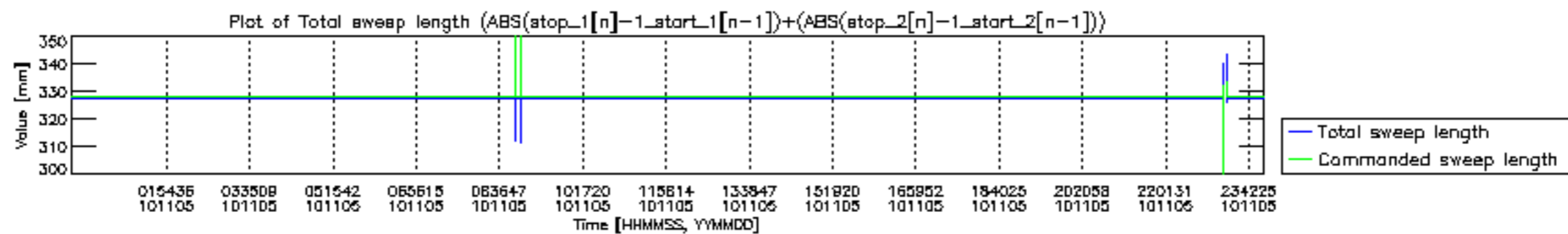


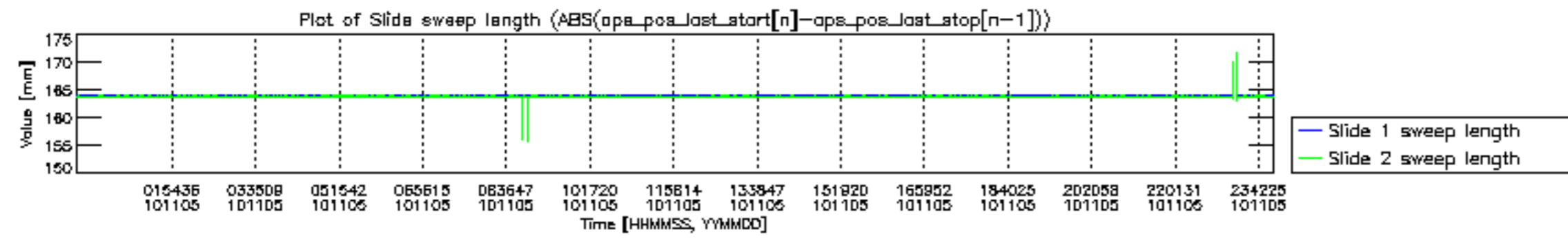


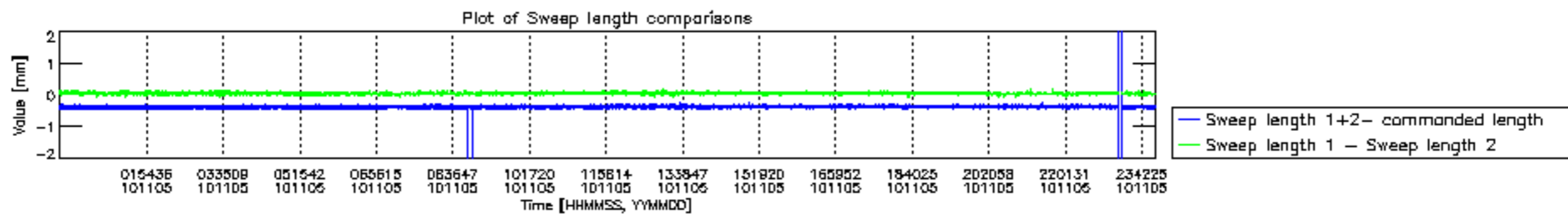


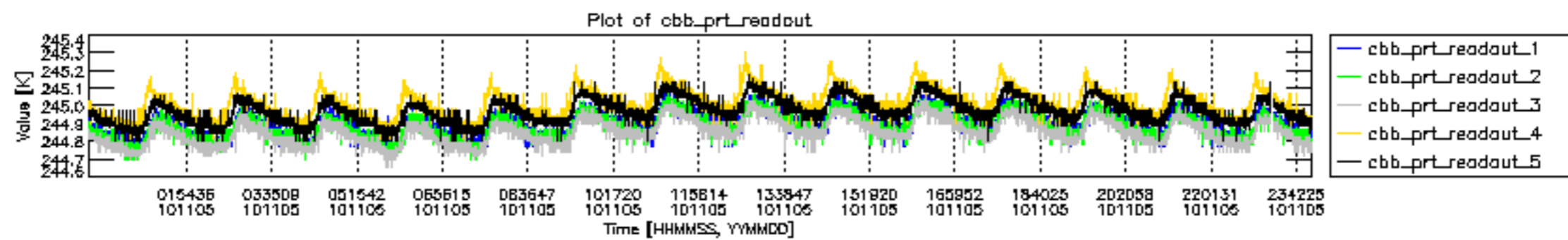


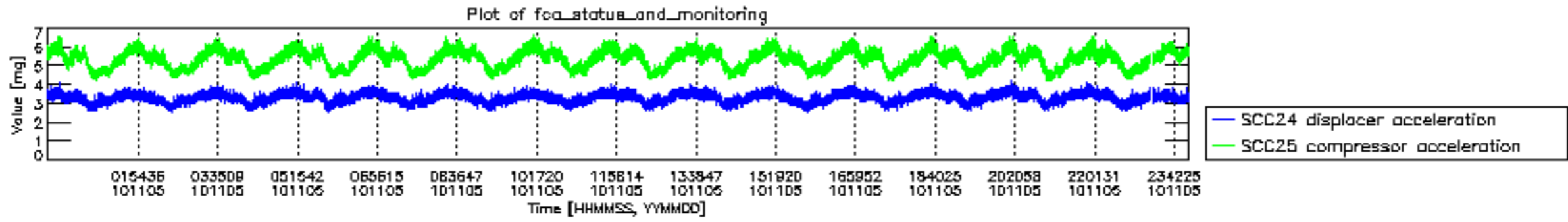












MIPNLOP_MIPSOUPAC_aux_fields_igm_cal, channel statistics plot
 Colour indicates value.

