

0. MIPAS Daily Report for level 0 products

[0.1 General Info](#)

[0.2 Instrument Operational Performance Parameters](#)

[0.3 ADF monitoring](#)

0.1 General Info

This report contains a daily analysis on parameters extracted from MIPAS level 0 data (The MIP_NL__0P product).

0.1.1 Report summary

The table below shows general characteristics of the data that are included into this report.

Item	Value
Report version	v1.5 2008-02-08
Time of report generation	09NOV2010 05:26:17
Data source version	KSPT_L0/4504-N
Processing scope for products	04NOV2010 00:00:00 to 05NOV2010 00:00:00
Start time of first product within scope	04NOV2010 00:10:35
Stop time of last product within scope	05NOV2010 01:12:49
Total number of level 0 products	16
Number of level 0 products with errors	1

0.1.2 Product Quality Indicators per product

The following table shows a summary for each product used in this report.

#	Product name	Start time	Stop time	Prod err	ISP err sign	ISP miss sign	ISP disc sign	rs sign
0	MIP_NL__0PNPDE20101104_001035_000058993096_00102_45375_1780.N1	04NOV2010 00:10:35	04NOV2010 01:48:55	0	0	0	0	0
1	MIP_NL__0PNPDE20101104_014750_000044413096_00103_45376_1781.N1	04NOV2010 01:47:50	04NOV2010 03:01:51	0	0	0	0	0
2	MIP_NL__0PNPDE20101104_030118_000061693096_00104_45377_1782.N1	04NOV2010 03:01:18	04NOV2010 04:44:07	0	0	0	0	0
3	MIP_NL__0PNPDE20101104_044333_000059603096_00105_45378_1783.N1	04NOV2010 04:43:33	04NOV2010 06:22:53	0	0	0	0	0
4	MIP_NL__0PNPDK20101104_062218_000041033096_00106_45379_3179.N1	04NOV2010 06:22:18	04NOV2010 07:30:41	0	0	0	0	0
5	MIP_NL__0PNPDK20101104_072850_000061073096_00107_45380_3180.N1	04NOV2010 07:28:50	04NOV2010 09:10:37	0	0	0	0	0
6	MIP_NL__0PNPDK20101104_090930_000059913096_00108_45381_3181.N1	04NOV2010 09:09:30	04NOV2010 10:49:22	0	0	0	0	0
7	MIP_NL__0PNPDK20101104_104744_000060653096_00109_45382_3182.N1	04NOV2010 10:47:44	04NOV2010 12:28:48	0	0	0	0	0
8	MIP_NL__0PNPDK20101104_122741_000059813096_00110_45383_3183.N1	04NOV2010 12:27:41	04NOV2010 14:07:22	0	0	0	0	0
9	MIP_NL__0PNPDK20101104_140616_000059333096_00111_45384_3184.N1	04NOV2010 14:06:16	04NOV2010 15:45:08	0	0	0	0	0
10	MIP_NL__0PNPDK20101104_154402_000059893096_00112_45385_3185.N1	04NOV2010 15:44:02	04NOV2010 17:23:51	0	0	0	0	0
11	MIP_NL__0PNPDK20101104_172244_000058703096_00113_45386_3186.N1	04NOV2010 17:22:44	04NOV2010 19:00:34	1	1	0	0	0
12	MIP_NL__0PNPDK20101104_185927_000060813096_00114_45387_3187.N1	04NOV2010 18:59:27	04NOV2010 20:40:49	0	0	0	0	0
13	MIP_NL__0PNPDE20101104_203843_000044623096_00115_45388_1784.N1	04NOV2010 20:38:43	04NOV2010 21:53:06	0	0	0	0	0
14	MIP_NL__0PNPDE20101104_215159_000060833096_00115_45388_1785.N1	04NOV2010 21:51:59	04NOV2010 23:33:22	0	0	0	0	0
15	MIP_NL__0PNPDE20101104_233213_000060363096_00116_45389_1786.N1	04NOV2010 23:32:13	05NOV2010 01:12:49	0	0	0	0	0

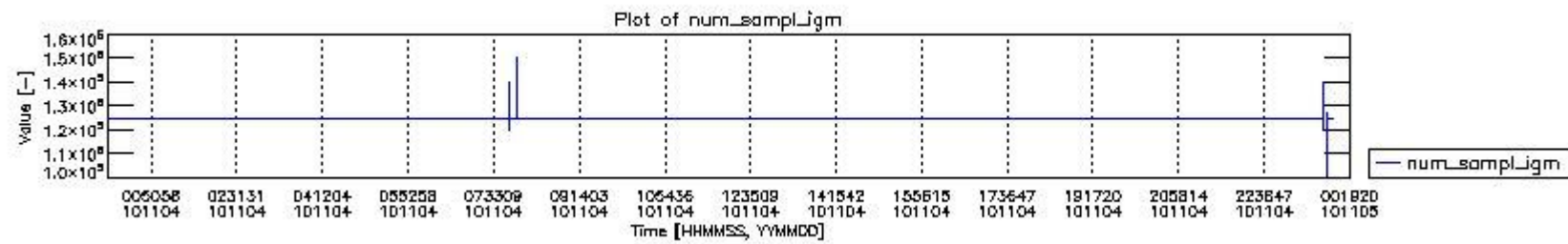
0.2 Instrument Operational Performance Parameters

The following plots give an overview of various instrument parameters for this day. The instrument parameters are part of the auxiliary data field within the source packets of the MIP_NL__0P product. The auxiliary data is normally included twice per interferogram. Note that only the first packet is currently included in monitoring.

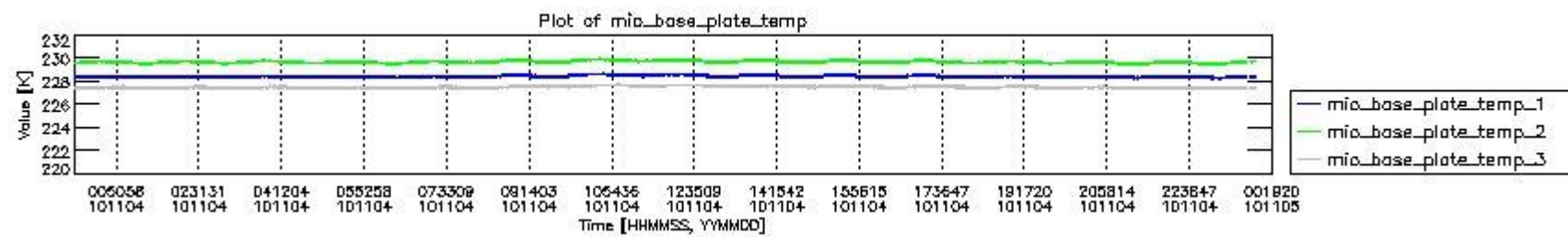
The following table shows the counts of various interferogram number of samples

Number of igm samples	Count [#]	Count [%]
100706	1	0.0024087679
120097	1	0.0024087679

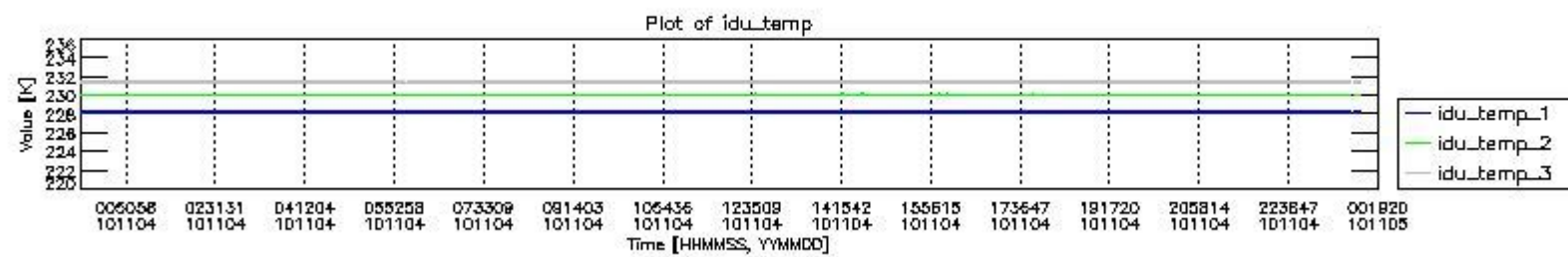
120171	1	0.0024087679
124800	38561	92.884500
124803	2942	7.0865952
125958	1	0.0024087679
127116	1	0.0024087679
127382	1	0.0024087679
135526	1	0.0024087679
135674	1	0.0024087679
140229	1	0.0024087679
140303	1	0.0024087679
147514	1	0.0024087679
150096	1	0.0024087679



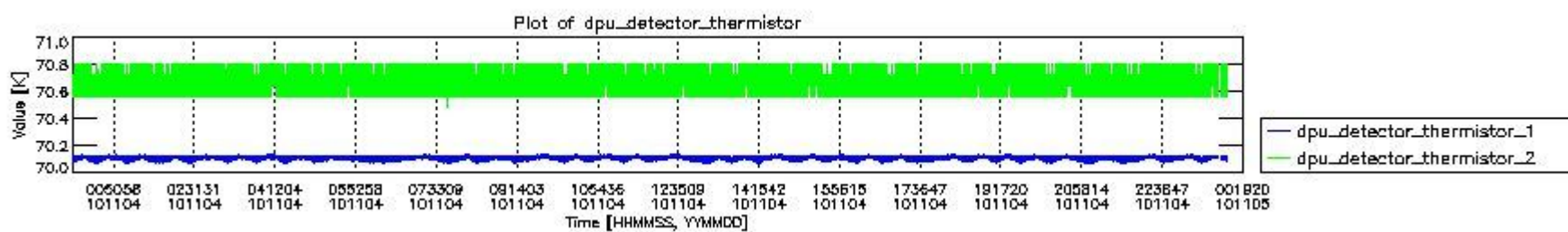
mipas_daily_report_level0_KSPT_L0_4504_N_20101104_0.PNG



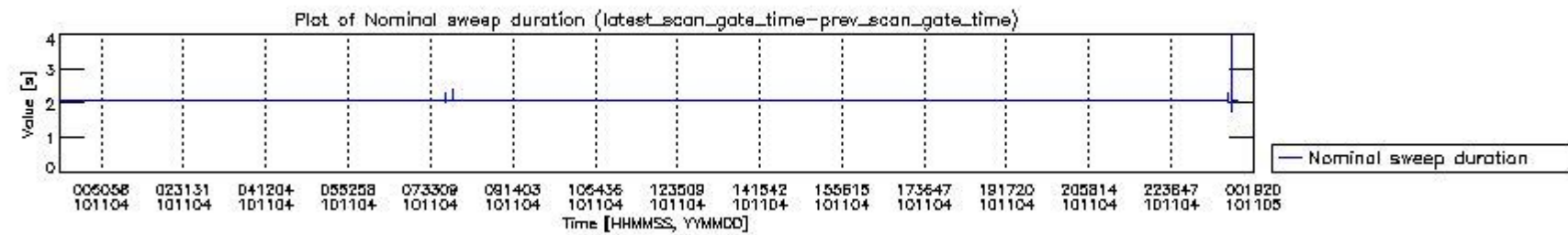
mipas_daily_report_level0_KSPT_L0_4504_N_20101104_1.PNG



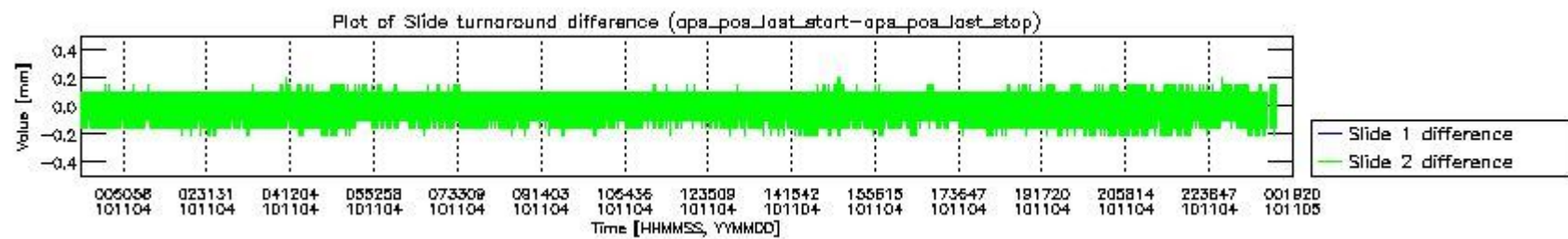
mipas_daily_report_level0_KSPT_L0_4504_N_20101104_2.PNG



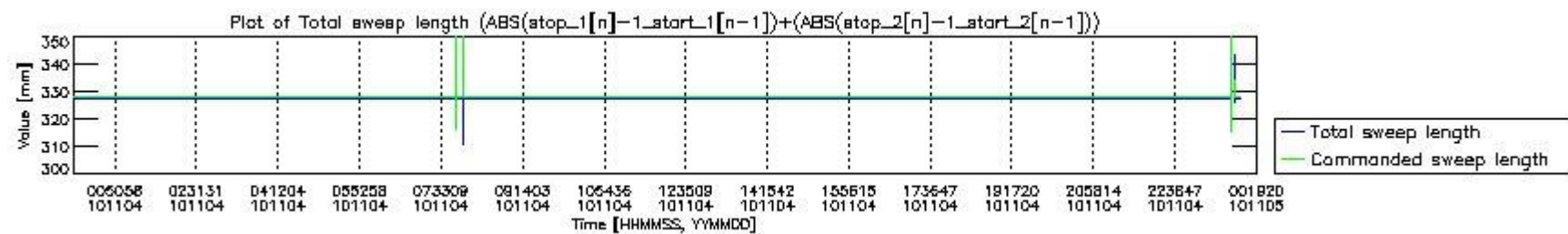
mipas_daily_report_level0_KSPT_L0_4504_N_20101104_3.PNG



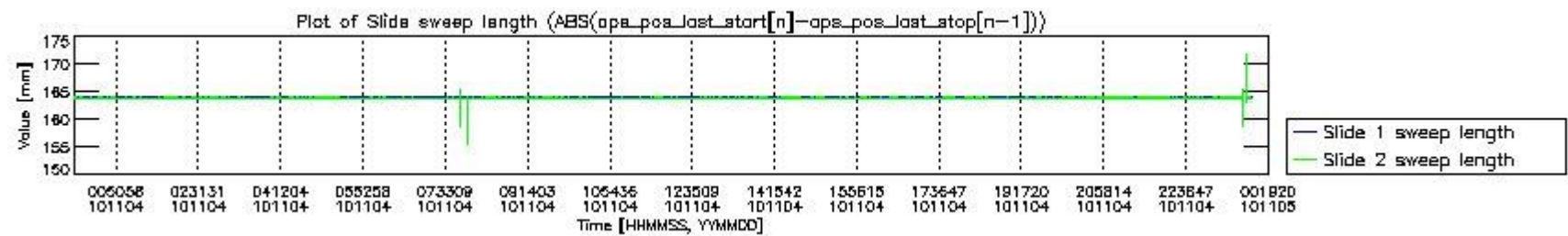
mipas_daily_report_level0_KSPT_L0_4504_N_20101104_4.PNG



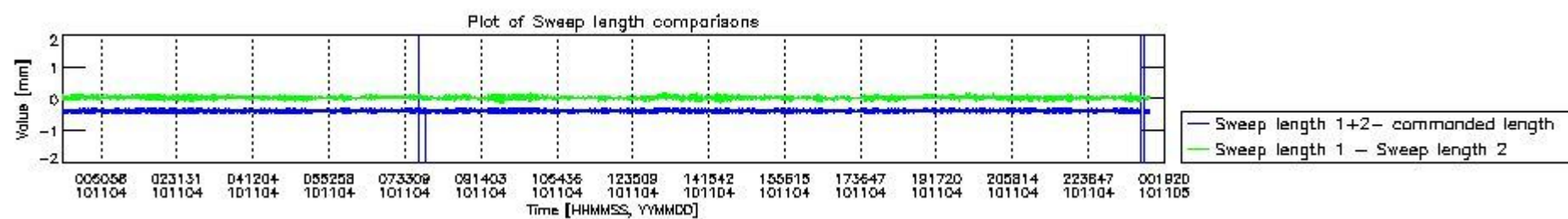
mipas_daily_report_level0_KSPT_L0_4504_N_20101104_5.PNG



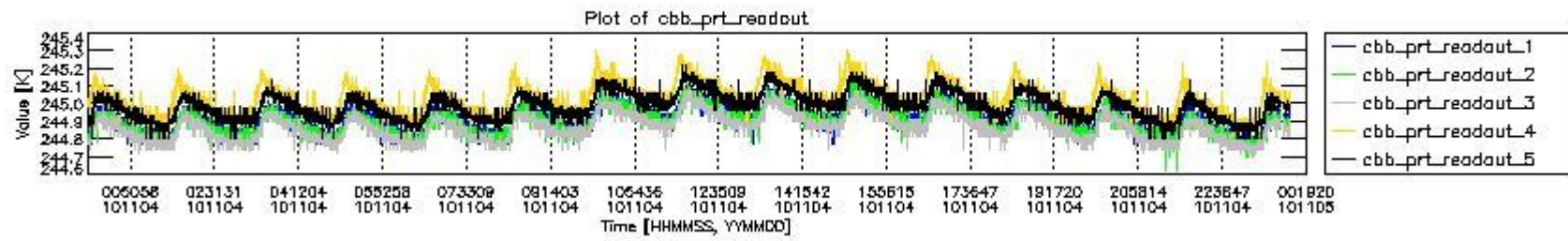
mipas_daily_report_level0_KSPT_L0_4504_N_20101104_6.PNG



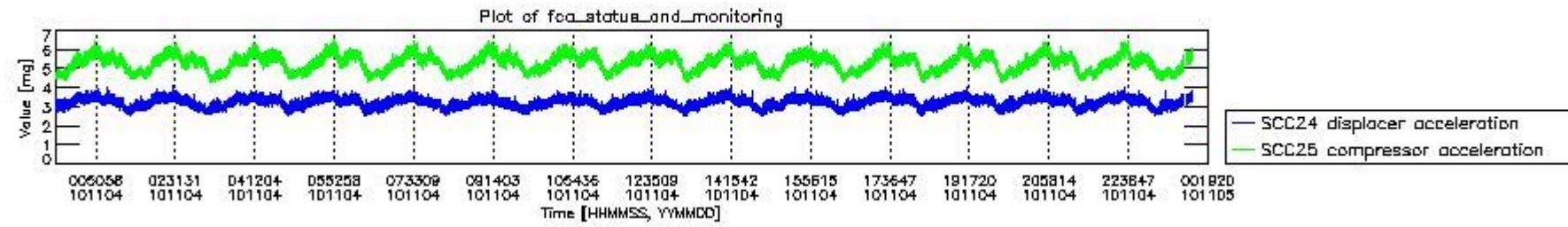
mipas_daily_report_level0_KSPT_L0_4504_N_20101104_7.PNG



mipas_daily_report_level0_KSPT_L0_4504_N_20101104_8.PNG



mipas_daily_report_level0_KSPT_L0_4504_N_20101104_9.PNG

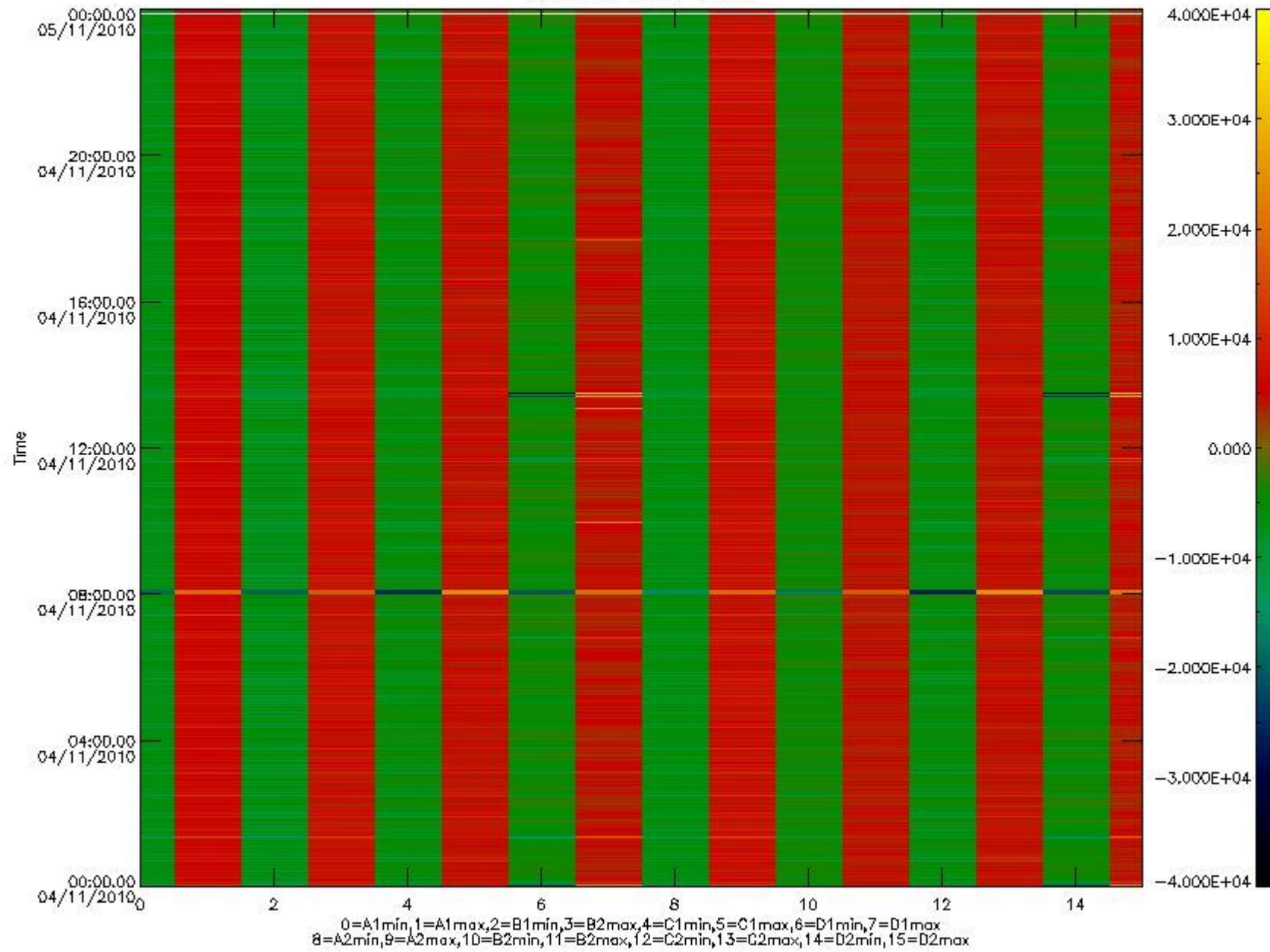


mipas_daily_report_level0_KSPT_L0_4504_N_20101104_10.PNG

The following table shows channel statistics for all channels for this day.

Channel	Min	Max	ADC
A1	-22485	24664	16bit
B1	-22138	18892	16bit
C1	-25256	25163	16bit
D1	-32768	32767	16bit
A2	-18587	23558	16bit
B2	-18810	18383	16bit
C2	-26219	25909	16bit
D2	-32768	32767	16bit

MIPNLOP_MIPSOUPAC_aux_fields_igm_cal, channel statistics plot
Colour indicates value.



mipas_daily_report_level0_KSPT_L0_4504_N_20101104_11.PNG

0.3 ADF monitoring

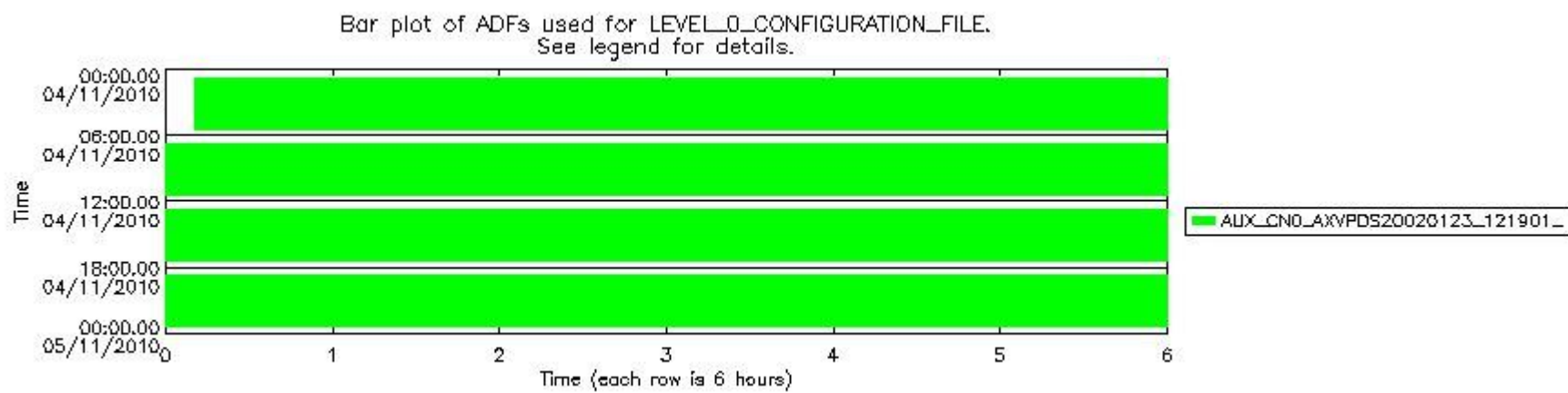
The use of ADFs is shown in two ways:

1. By means of two tables that can be used to find the ADF used for a specific product.
2. By means of plots that show changes in ADF using colours.

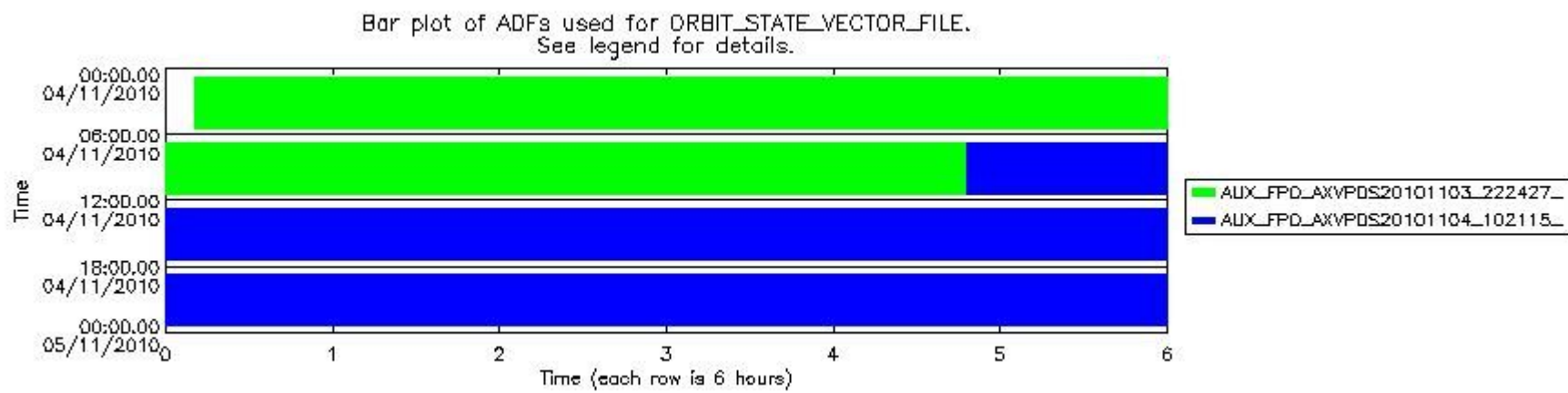
Number	ADF
0	AUX_CN0_AXVPDS20020123_121901_20020101_000000_20200101_000000
1	AUX_FPO_AXVPDS20101103_222427_20101103_192047_20101113_213445
2	AUX_FPO_AXVPDS20101104_102115_20101104_084240_20101114_105637

Number	Product name	#CN0	#FPO
--------	--------------	------	------

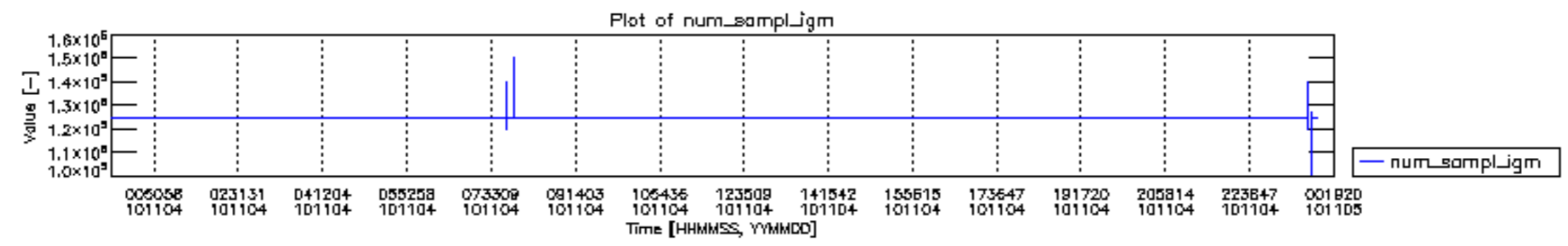
0	MIP_NL__0PNPDE20101104_001035_000058993096_00102_45375_1780.N1	0	1
1	MIP_NL__0PNPDE20101104_014750_000044413096_00103_45376_1781.N1	0	1
2	MIP_NL__0PNPDE20101104_030118_000061693096_00104_45377_1782.N1	0	1
3	MIP_NL__0PNPDE20101104_044333_000059603096_00105_45378_1783.N1	0	1
4	MIP_NL__0PNPDK20101104_062218_000041033096_00106_45379_3179.N1	0	1
5	MIP_NL__0PNPDK20101104_072850_000061073096_00107_45380_3180.N1	0	1
6	MIP_NL__0PNPDK20101104_090930_000059913096_00108_45381_3181.N1	0	1
7	MIP_NL__0PNPDK20101104_104744_000060653096_00109_45382_3182.N1	0	2
8	MIP_NL__0PNPDK20101104_122741_000059813096_00110_45383_3183.N1	0	2
9	MIP_NL__0PNPDK20101104_140616_000059333096_00111_45384_3184.N1	0	2
10	MIP_NL__0PNPDK20101104_154402_000059893096_00112_45385_3185.N1	0	2
11	MIP_NL__0PNPDK20101104_172244_000058703096_00113_45386_3186.N1	0	2
12	MIP_NL__0PNPDK20101104_185927_000060813096_00114_45387_3187.N1	0	2
13	MIP_NL__0PNPDE20101104_203843_000044623096_00115_45388_1784.N1	0	2
14	MIP_NL__0PNPDE20101104_215159_000060833096_00115_45388_1785.N1	0	2
15	MIP_NL__0PNPDE20101104_233213_000060363096_00116_45389_1786.N1	0	2

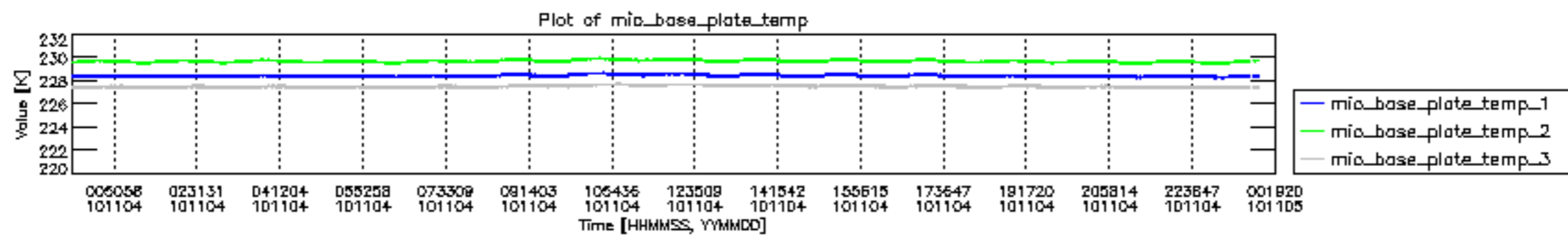


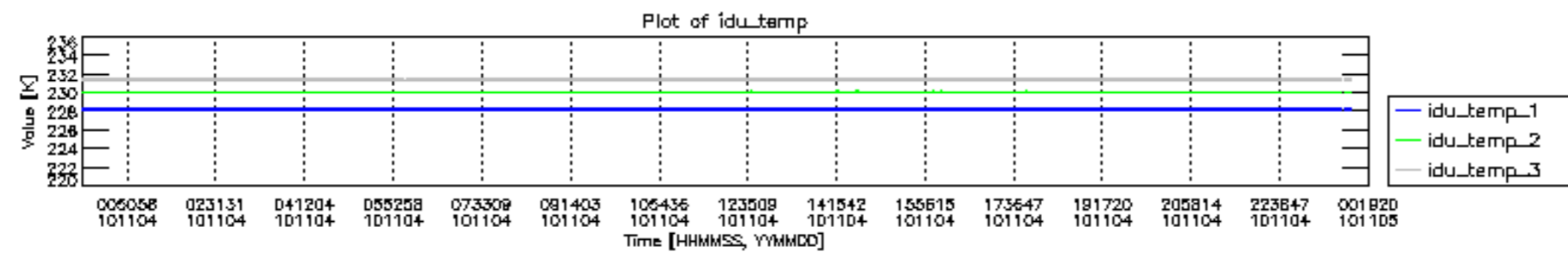
mipas_daily_report_level0_KSPT_L0_4504_N_20101104_12.PNG

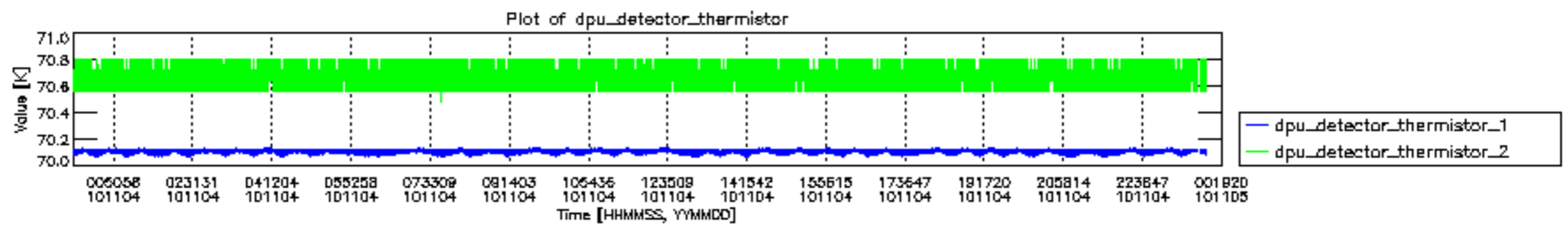


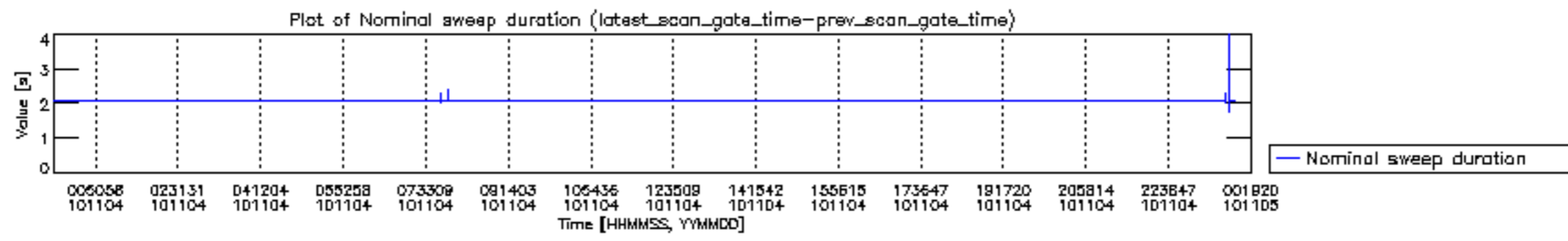
mipas_daily_report_level0_KSPT_L0_4504_N_20101104_13.PNG

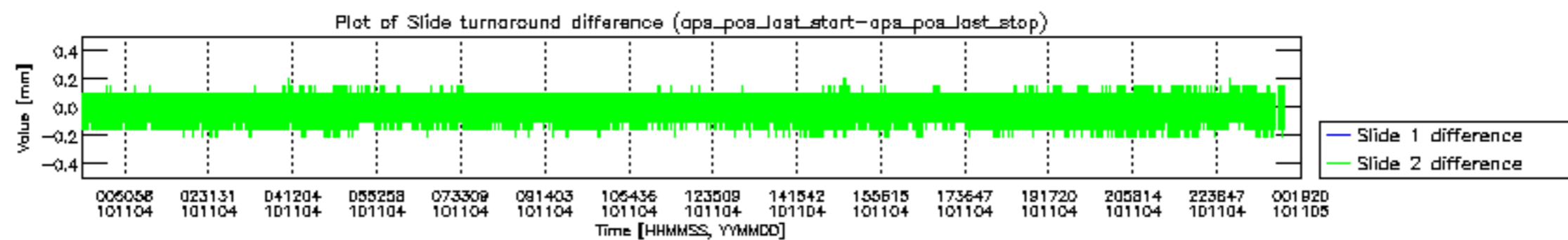


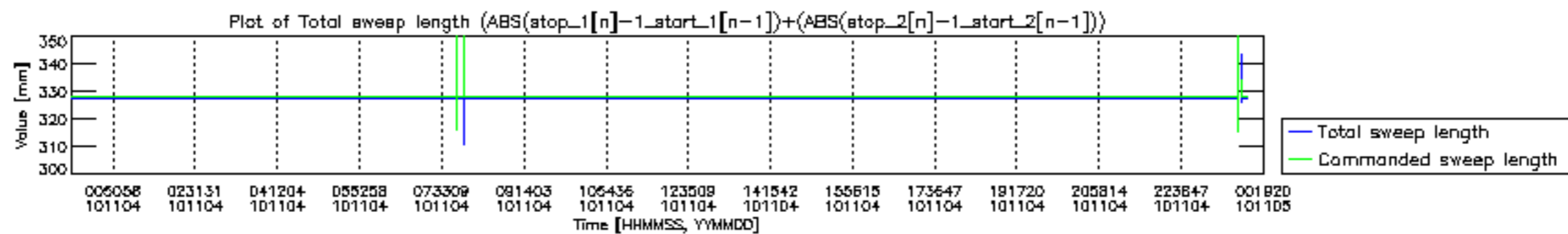


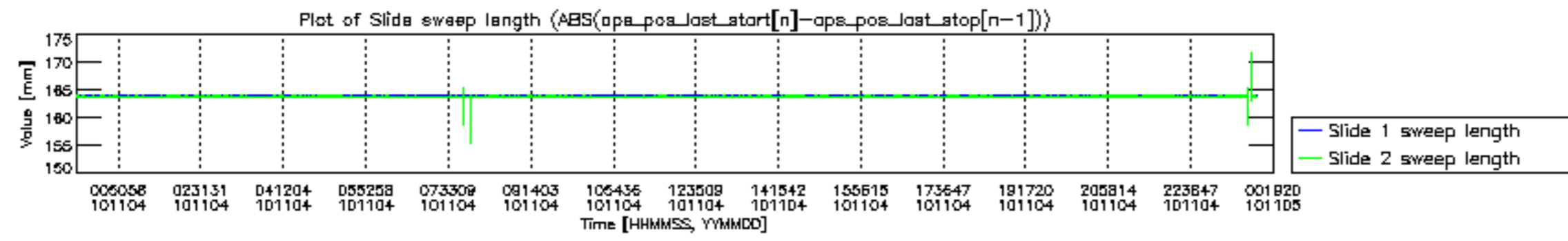


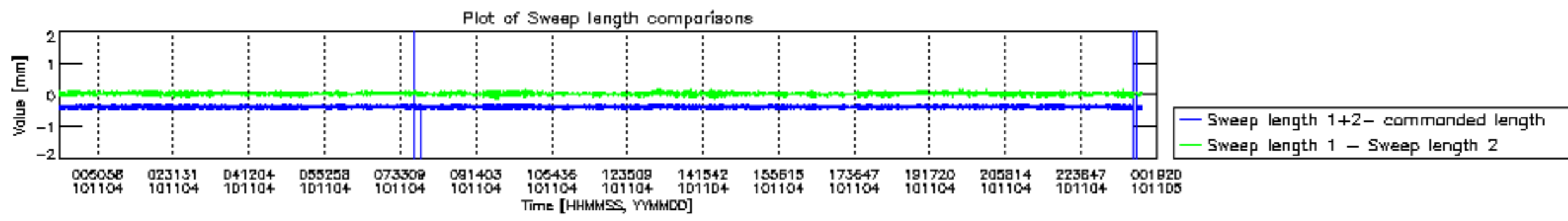


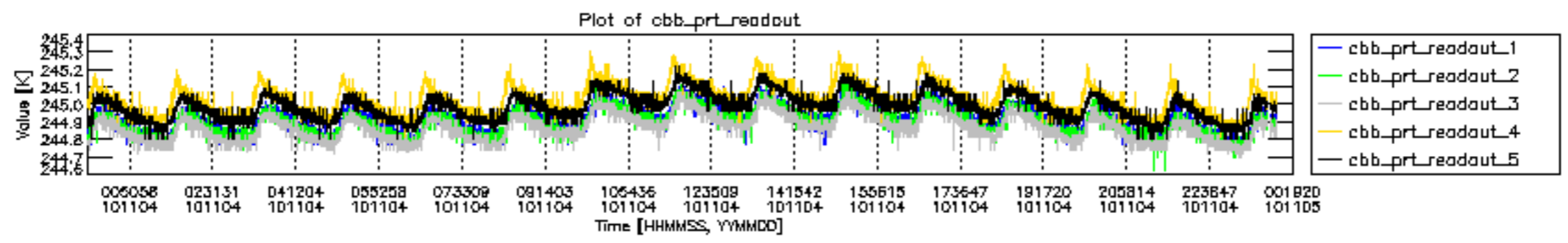


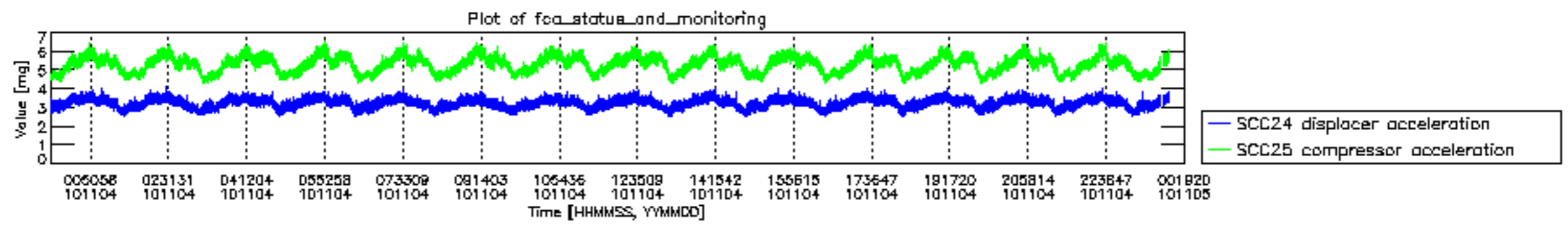












MIPNLOP_MIPSOUPAC_aux_fields_igm_cal, channel statistics plot
 Colour indicates value.

