

0. MIPAS Daily Report for level 0 products

[0.1 General Info](#)

[0.2 Instrument Operational Performance Parameters](#)

[0.3 ADF monitoring](#)

0.1 General Info

This report contains a daily analysis on parameters extracted from MIPAS level 0 data (The MIP_NL__0P product).

0.1.1 Report summary

The table below shows general characteristics of the data that are included into this report.

Item	Value
Report version	v1.5 2008-02-08
Time of report generation	08NOV2010 05:23:45
Data source version	KSPT_L0/4504-N
Processing scope for products	03NOV2010 00:00:00 to 04NOV2010 00:00:00
Start time of first product within scope	03NOV2010 00:45:29
Stop time of last product within scope	04NOV2010 00:11:42
Total number of level 0 products	15
Number of level 0 products with errors	1

0.1.2 Product Quality Indicators per product

The following table shows a summary for each product used in this report.

#	Product name	Start time	Stop time	Prod err	ISP err sign	ISP miss sign	ISP disc sign	rs sign
0	MIP_NL__0PNPDE20101103_004529_000059023096_00088_45361_1773.N1	03NOV2010 00:45:29	03NOV2010 02:23:51	0	0	0	0	0
1	MIP_NL__0PNPDE20101103_022253_000045193096_00089_45362_1774.N1	03NOV2010 02:22:53	03NOV2010 03:38:11	0	0	0	0	0
2	MIP_NL__0PNPDE20101103_033738_000061463096_00090_45363_1775.N1	03NOV2010 03:37:38	03NOV2010 05:20:04	0	0	0	0	0
3	MIP_NL__0PNPDE20101103_051930_000060353096_00091_45364_1776.N1	03NOV2010 05:19:30	03NOV2010 07:00:06	0	0	0	0	0
4	MIP_NL__0PNPDK20101103_065932_000040693096_00092_45365_3171.N1	03NOV2010 06:59:32	03NOV2010 08:07:21	0	0	0	0	0
5	MIP_NL__0PNPDK20101103_080545_000061513096_00093_45366_3172.N1	03NOV2010 08:05:45	03NOV2010 09:48:16	0	0	0	0	0
6	MIP_NL__0PNPDK20101103_094713_000060143096_00094_45367_3173.N1	03NOV2010 09:47:13	03NOV2010 11:27:28	0	0	0	0	0
7	MIP_NL__0PNPDK20101103_112602_000060843096_00095_45368_3174.N1	03NOV2010 11:26:02	03NOV2010 13:07:26	0	0	0	0	0
8	MIP_NL__0PNPDK20101103_130627_000058983096_00096_45369_3175.N1	03NOV2010 13:06:27	03NOV2010 14:44:46	1	1	0	0	0
9	MIP_NL__0PNPDK20101103_144345_000058743096_00097_45370_3176.N1	03NOV2010 14:43:45	03NOV2010 16:21:40	0	0	0	0	0
10	MIP_NL__0PNPDK20101103_162106_000058873096_00098_45371_3177.N1	03NOV2010 16:21:06	03NOV2010 17:59:13	0	0	0	0	0
11	MIP_NL__0PNPDK20101103_175813_000059333096_00099_45372_3178.N1	03NOV2010 17:58:13	03NOV2010 19:37:06	0	0	0	0	0
12	MIP_NL__0PNPDE20101103_193519_000042223096_00100_45373_1777.N1	03NOV2010 19:35:19	03NOV2010 20:45:41	0	0	0	0	0
13	MIP_NL__0PNPDE20101103_204439_000064113096_00100_45373_1778.N1	03NOV2010 20:44:39	03NOV2010 22:31:30	0	0	0	0	0
14	MIP_NL__0PNPDE20101103_223023_000060793096_00101_45374_1779.N1	03NOV2010 22:30:23	04NOV2010 00:11:42	0	0	0	0	0

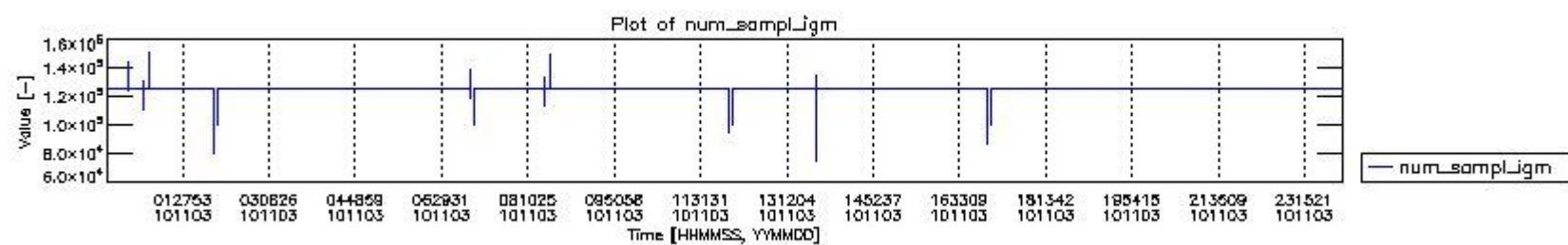
0.2 Instrument Operational Performance Parameters

The following plots give an overview of various instrument parameters for this day. The instrument parameters are part of the auxiliary data field within the source packets of the MIP_NL__0P product. The auxiliary data is normally included twice per interferogram. Note that only the first packet is currently included in monitoring.

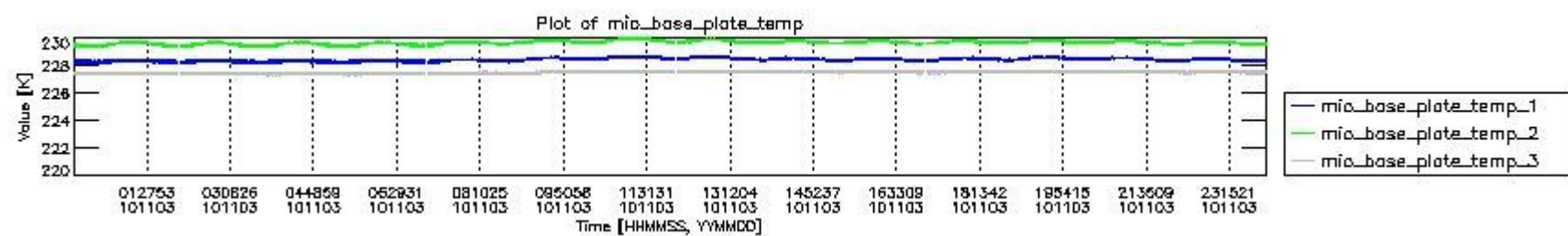
The following table shows the counts of various interferogram number of samples

Number of igm samples	Count [#]	Count [%]
74712	1	0.0024259479
79620	1	0.0024259479
87202	1	0.0024259479

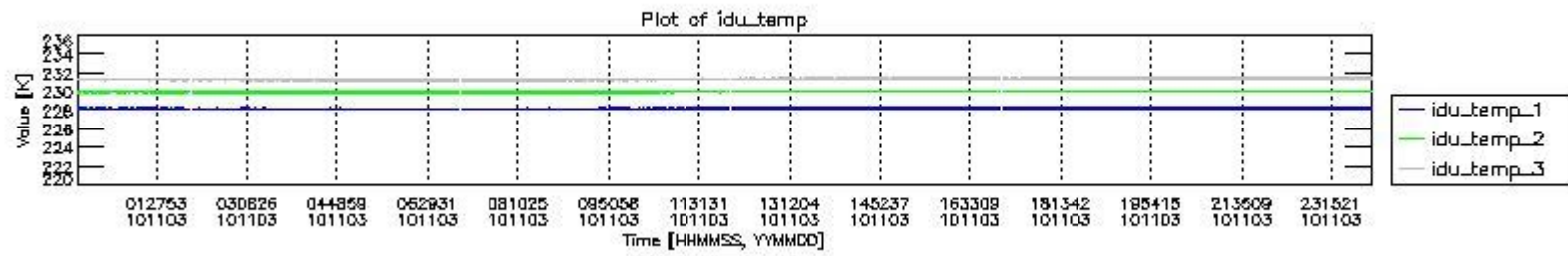
92144	1	0.0024259479
94192	1	0.0024259479
95935	1	0.0024259479
99430	1	0.0024259479
99759	1	0.0024259479
99814	2	0.0048518959
99962	2	0.0048518959
109822	1	0.0024259479
110655	1	0.0024259479
112276	1	0.0024259479
113703	1	0.0024259479
116070	1	0.0024259479
116642	1	0.0024259479
118092	1	0.0024259479
119562	1	0.0024259479
122738	1	0.0024259479
124334	1	0.0024259479
124800	38283	92.872565
124803	2895	7.0231193
125066	2	0.0048518959
125214	2	0.0048518959
125332	2	0.0048518959
125628	2	0.0048518959
127010	1	0.0024259479
127902	1	0.0024259479
130787	1	0.0024259479
131510	1	0.0024259479
133835	1	0.0024259479
134869	1	0.0024259479
138221	1	0.0024259479
144000	1	0.0024259479
144466	1	0.0024259479
147142	1	0.0024259479
148034	1	0.0024259479
149352	1	0.0024259479
151136	1	0.0024259479



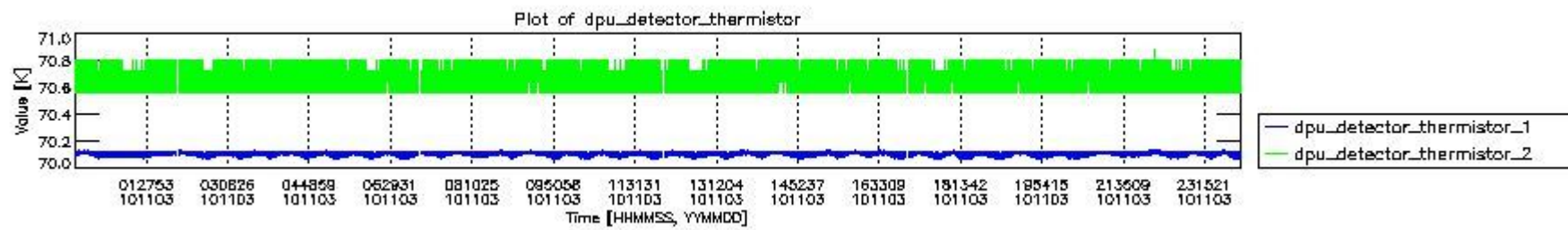
mipas_daily_report_level0_KSPT_L0_4504_N_20101103_0.PNG



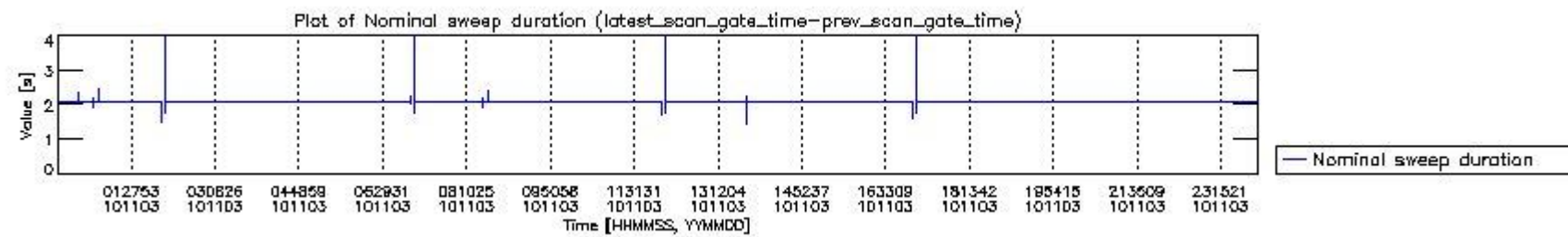
mipas_daily_report_level0_KSPT_L0_4504_N_20101103_1.PNG



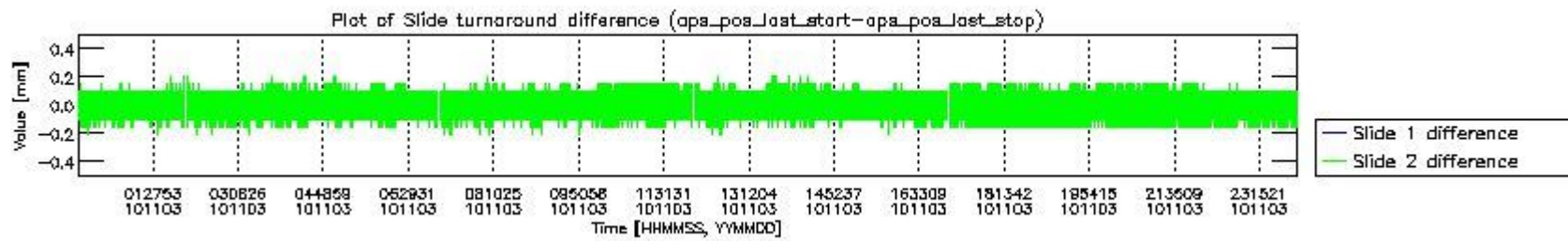
mipas_daily_report_level0_KSPT_L0_4504_N_20101103_2.PNG



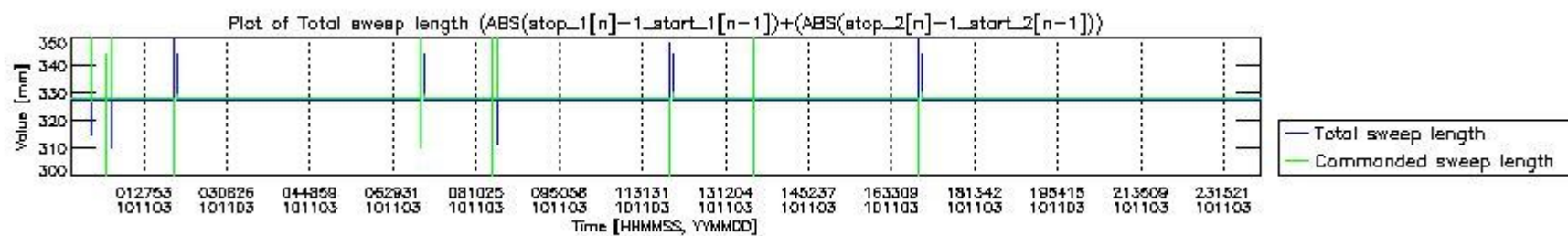
mipas_daily_report_level0_KSPT_L0_4504_N_20101103_3.PNG



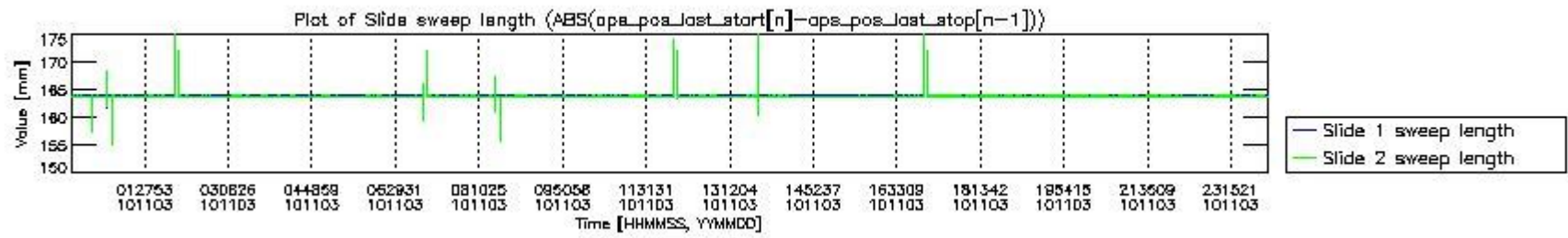
mipas_daily_report_level0_KSPT_L0_4504_N_20101103_4.PNG



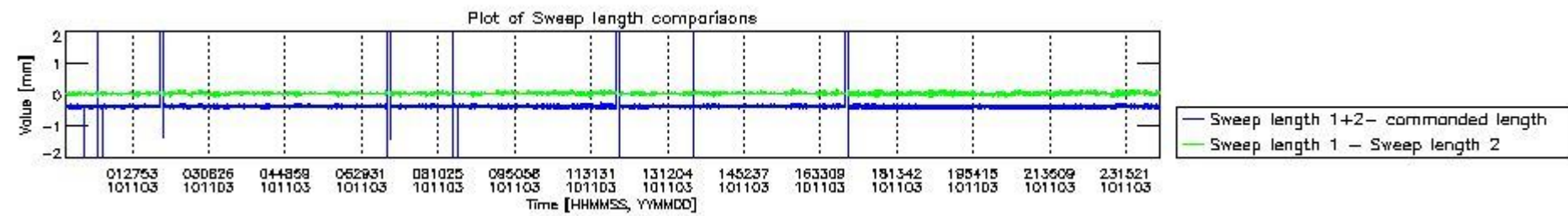
mipas_daily_report_level0_KSPT_L0_4504_N_20101103_5.PNG



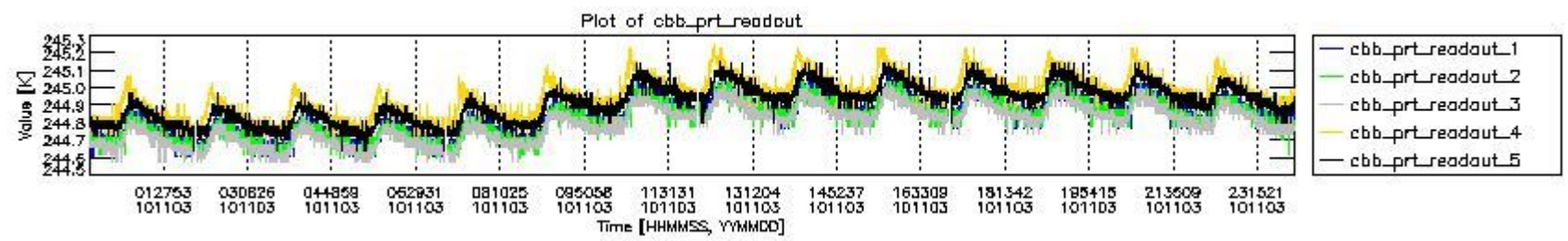
mipas_daily_report_level0_KSPT_L0_4504_N_20101103_6.PNG



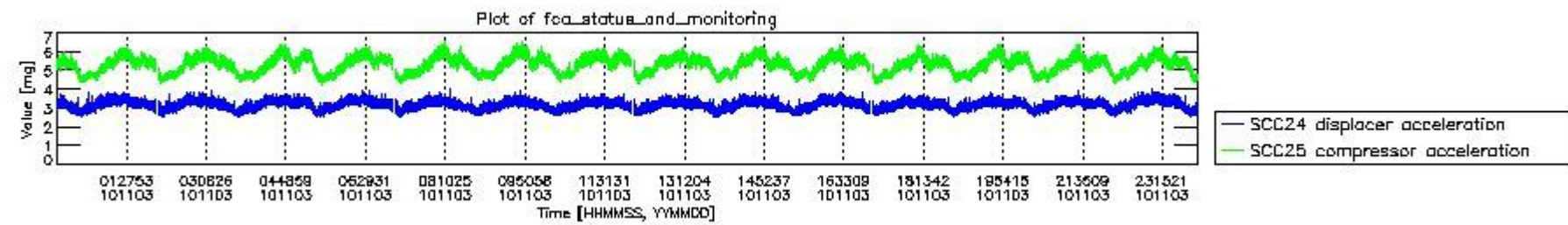
mipas_daily_report_level0_KSPT_L0_4504_N_20101103_7.PNG



mipas_daily_report_level0_KSPT_L0_4504_N_20101103_8.PNG



mipas_daily_report_level0_KSPT_L0_4504_N_20101103_9.PNG

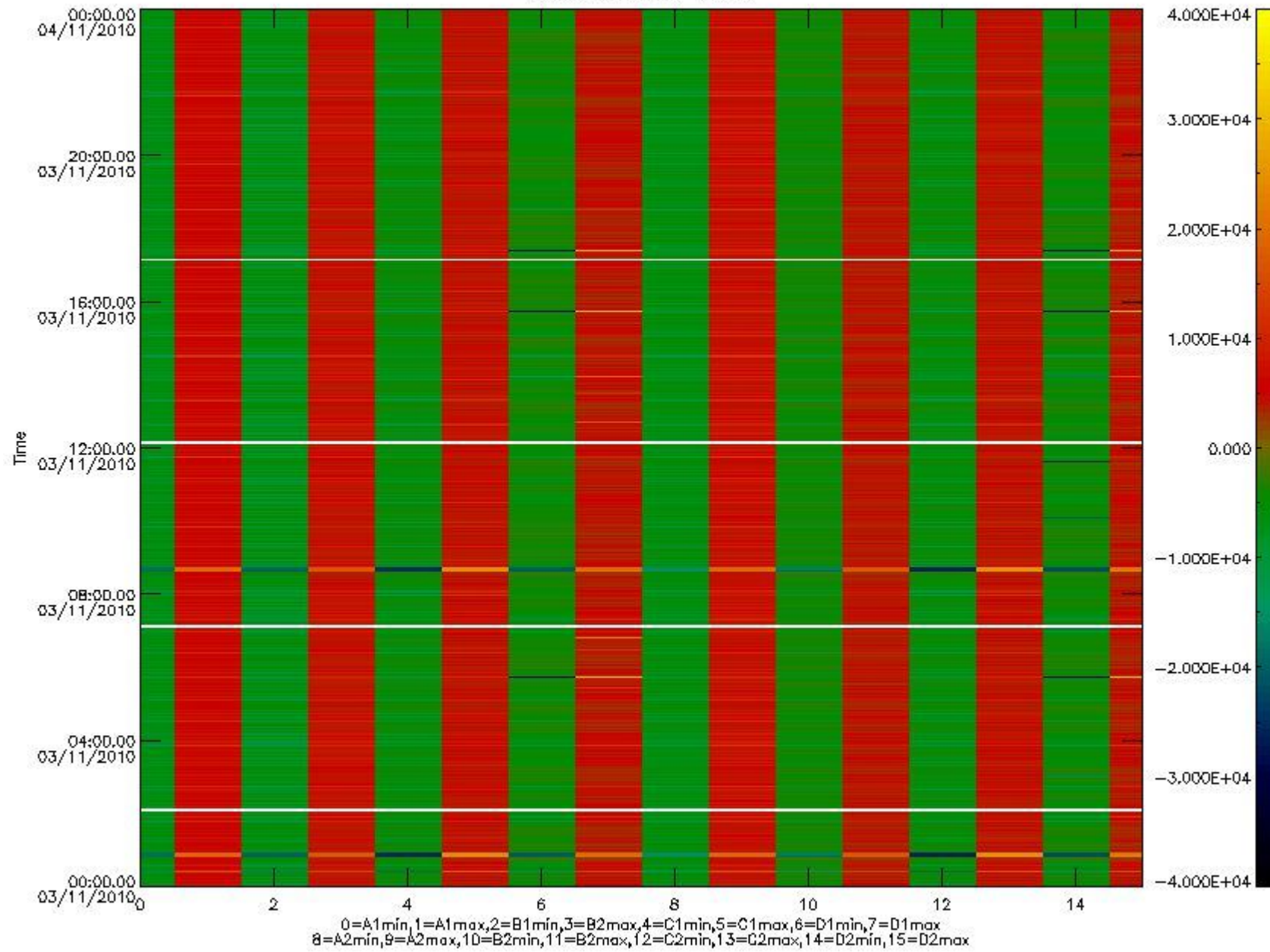


mipas_daily_report_level0_KSPT_L0_4504_N_20101103_10.PNG

The following table shows channel statistics for all channels for this day.

Channel	Min	Max	ADC
A1	-18730	19941	16bit
B1	-20725	17815	16bit
C1	-25295	25179	16bit
D1	-32768	32767	16bit
A2	-16140	20028	16bit
B2	-18848	18402	16bit
C2	-26256	25906	16bit
D2	-32768	32767	16bit

MIPNLOP_MIPSOUPAC_aux_fields_igm_cal, channel statistics plot
Colour indicates value.



mipas_daily_report_level0_KSPT_L0_4504_N_20101103_11.PNG

0.3 ADF monitoring

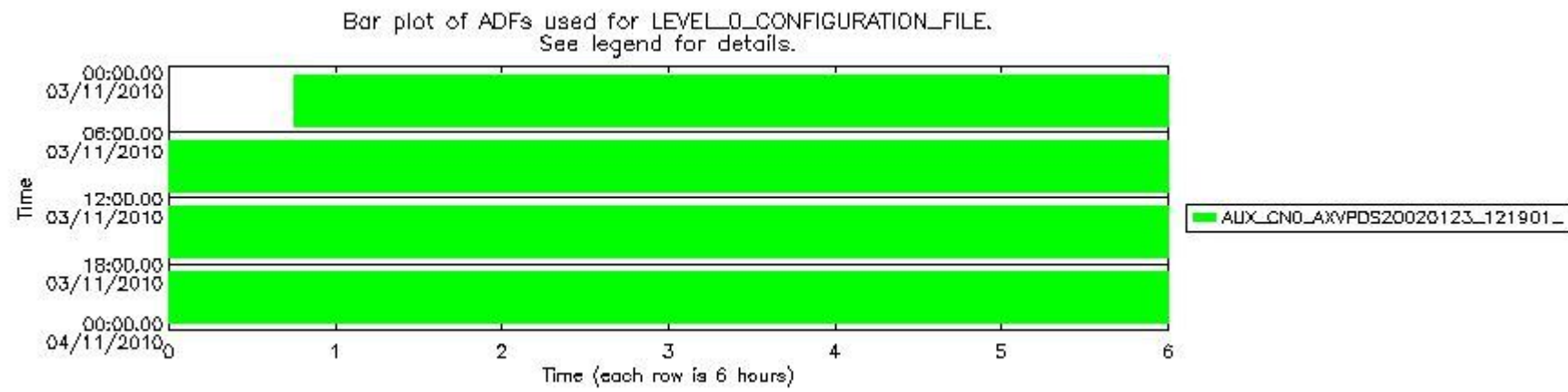
The use of ADFs is shown in two ways:

1. By means of two tables that can be used to find the ADF used for a specific product.
2. By means of plots that show changes in ADF using colours.

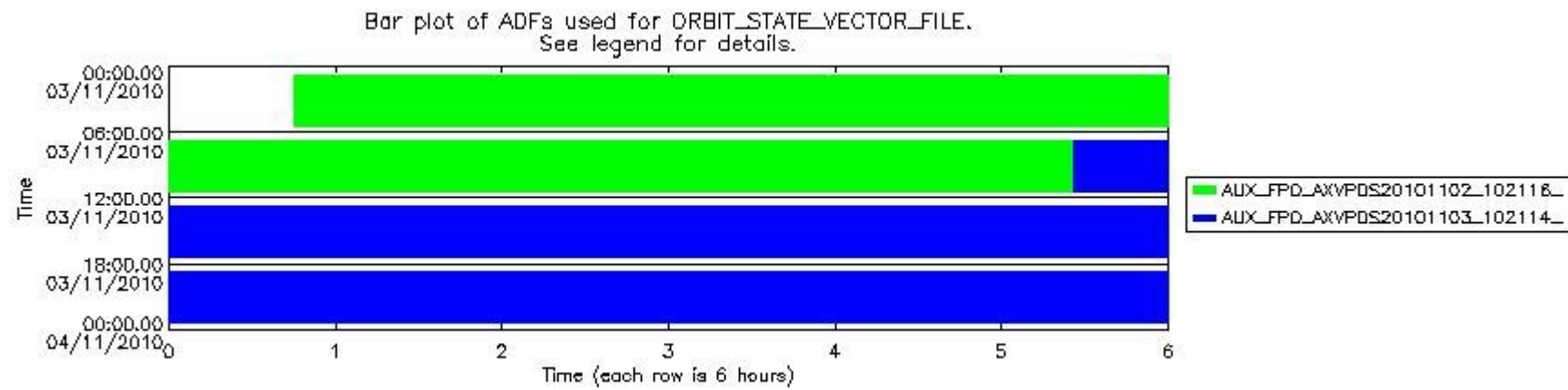
Number	ADF
0	AUX_CN0_AXVPDS20020123_121901_20020101_000000_20200101_000000
1	AUX_FPO_AXVPDS20101102_102116_20101101_185357_20101111_210758
2	AUX_FPO_AXVPDS20101103_102114_20101102_195729_20101112_203114

Number	Product name	#CN0	#FPO
--------	--------------	------	------

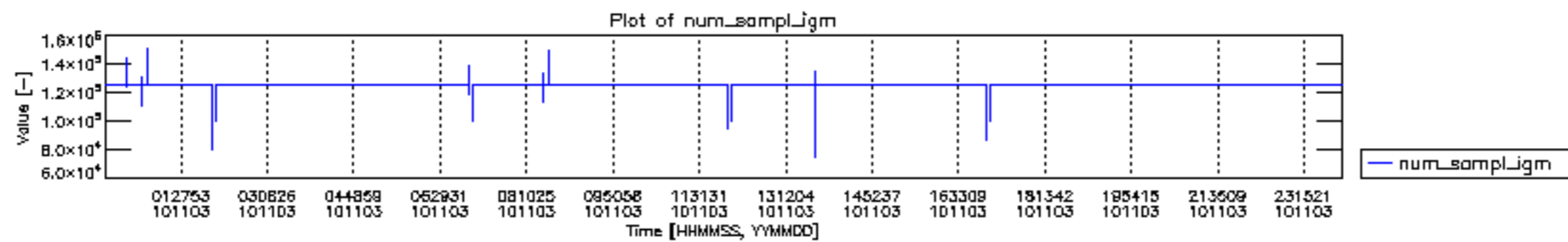
0	MIP_NL__0PNPDE20101103_004529_000059023096_00088_45361_1773.N1	0	1
1	MIP_NL__0PNPDE20101103_022253_000045193096_00089_45362_1774.N1	0	1
2	MIP_NL__0PNPDE20101103_033738_000061463096_00090_45363_1775.N1	0	1
3	MIP_NL__0PNPDE20101103_051930_000060353096_00091_45364_1776.N1	0	1
4	MIP_NL__0PNPDK20101103_065932_000040693096_00092_45365_3171.N1	0	1
5	MIP_NL__0PNPDK20101103_080545_000061513096_00093_45366_3172.N1	0	1
6	MIP_NL__0PNPDK20101103_094713_000060143096_00094_45367_3173.N1	0	1
7	MIP_NL__0PNPDK20101103_112602_000060843096_00095_45368_3174.N1	0	2
8	MIP_NL__0PNPDK20101103_130627_000058983096_00096_45369_3175.N1	0	2
9	MIP_NL__0PNPDK20101103_144345_000058743096_00097_45370_3176.N1	0	2
10	MIP_NL__0PNPDK20101103_162106_000058873096_00098_45371_3177.N1	0	2
11	MIP_NL__0PNPDK20101103_175813_000059333096_00099_45372_3178.N1	0	2
12	MIP_NL__0PNPDE20101103_193519_000042223096_00100_45373_1777.N1	0	2
13	MIP_NL__0PNPDE20101103_204439_000064113096_00100_45373_1778.N1	0	2
14	MIP_NL__0PNPDE20101103_223023_000060793096_00101_45374_1779.N1	0	2

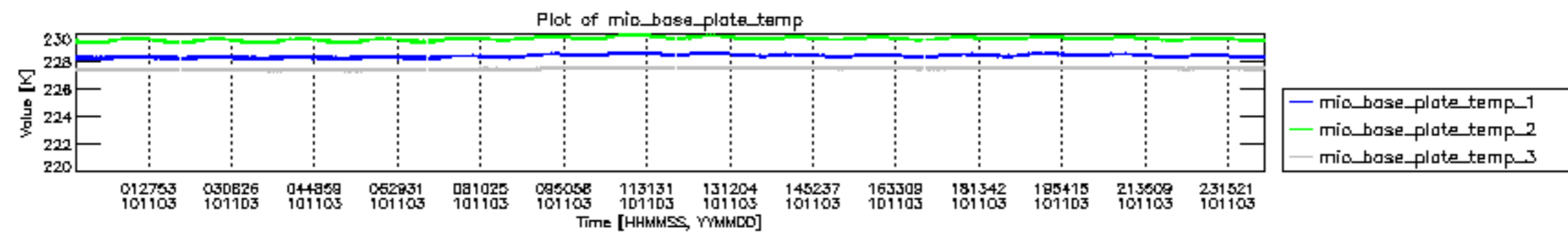


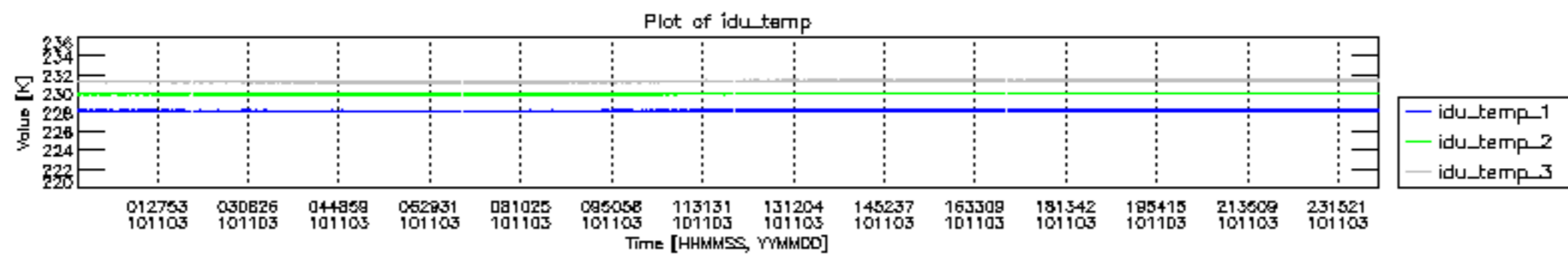
mipas_daily_report_level0_KSPT_L0_4504_N_20101103_12.PNG

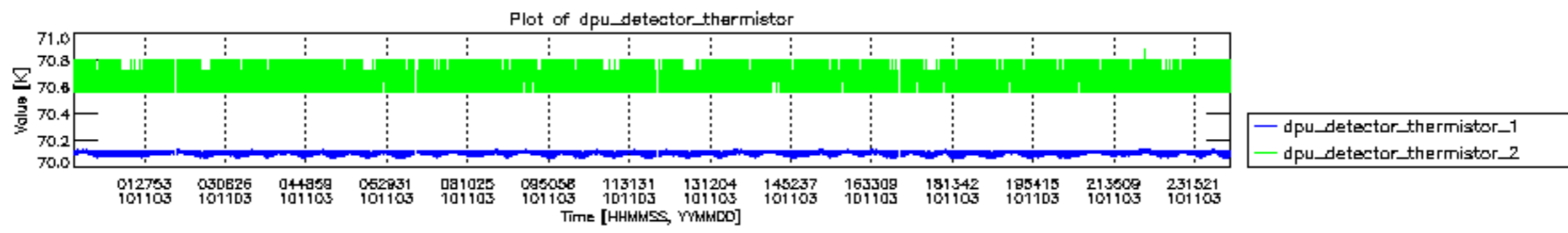


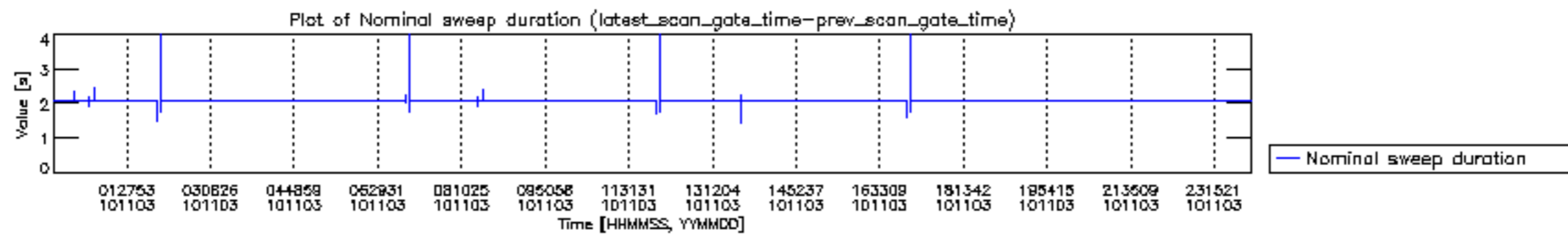
mipas_daily_report_level0_KSPT_L0_4504_N_20101103_13.PNG

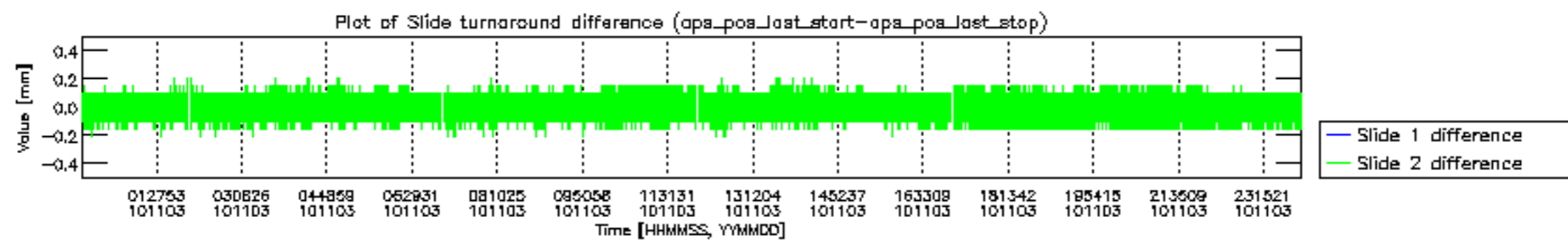


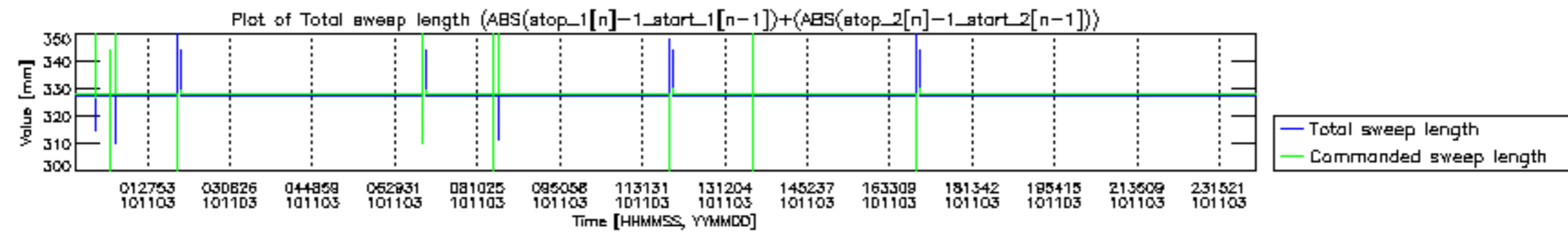


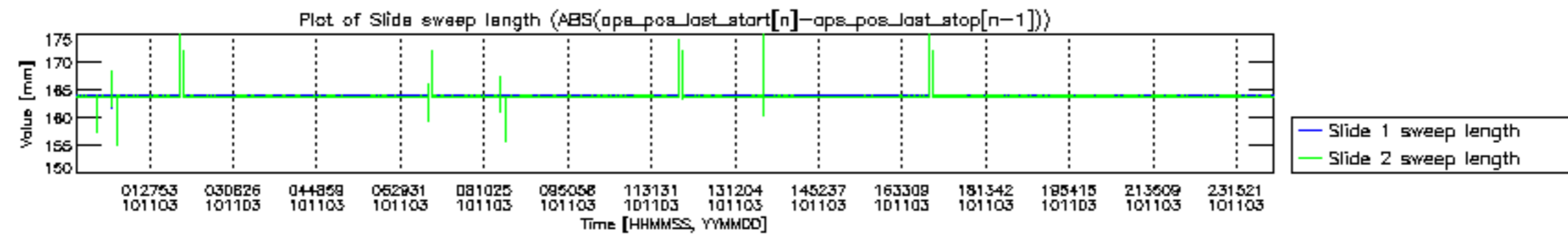


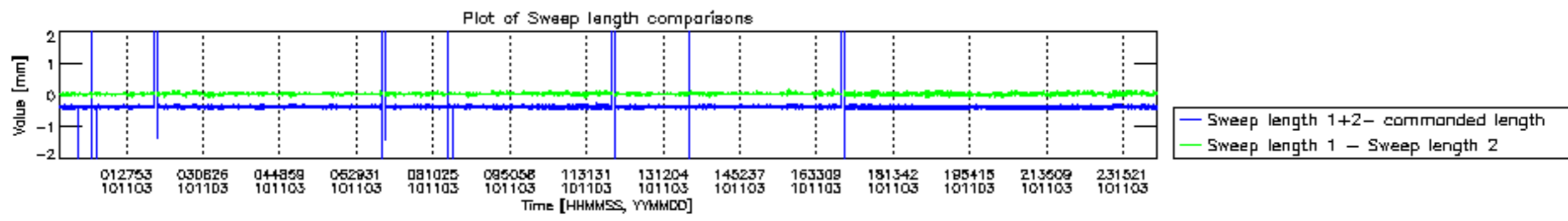


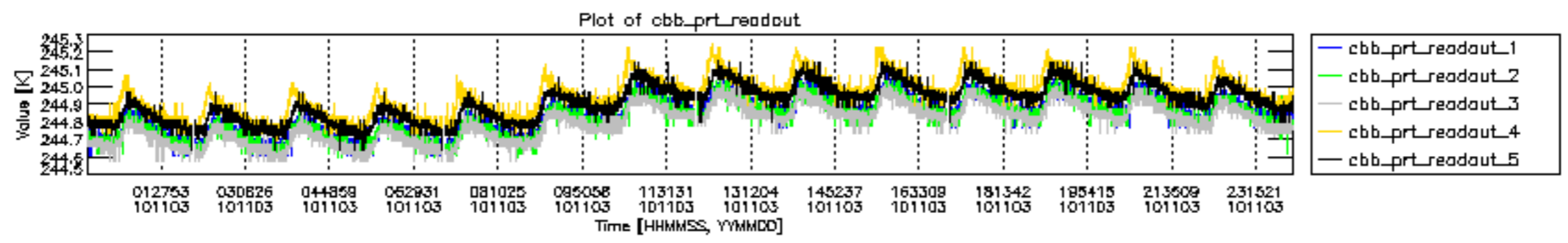


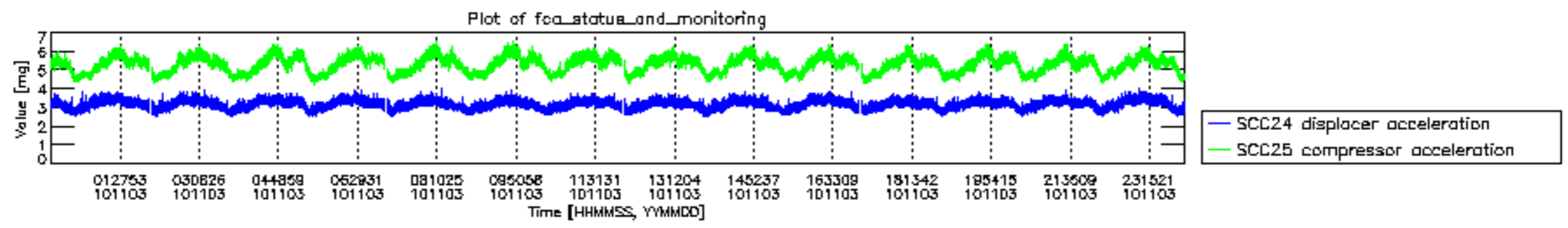












MIPNLOP_MIPSOUPAC_aux_fields_igm_cal, channel statistics plot
 Colour indicates value.

