

0. MIPAS Daily Report for level 0 products

[0.1 General Info](#)

[0.2 Instrument Operational Performance Parameters](#)

[0.3 ADF monitoring](#)

0.1 General Info

This report contains a daily analysis on parameters extracted from MIPAS level 0 data (The MIP_NL__0P product).

0.1.1 Report summary

The table below shows general characteristics of the data that are included into this report.

Item	Value
Report version	v1.5 2008-02-08
Time of report generation	04NOV2010 05:23:29
Data source version	KSPT_L0/4504-N
Processing scope for products	30OCT2010 00:00:00 to 31OCT2010 00:00:00
Start time of first product within scope	30OCT2010 01:31:12
Stop time of last product within scope	31OCT2010 00:56:31
Total number of level 0 products	15
Number of level 0 products with errors	1

0.1.2 Product Quality Indicators per product

The following table shows a summary for each product used in this report.

#	Product name	Start time	Stop time	Prod err	ISP err sign	ISP miss sign	ISP disc sign	rs sign
0	MIP_NL__0PNPDE20101030_013112_000044103096_00031_45304_1747.N1	30OCT2010 01:31:12	30OCT2010 02:44:42	0	0	0	0	0
1	MIP_NL__0PNPDE20101030_024411_000061203096_00032_45305_1748.N1	30OCT2010 02:44:11	30OCT2010 04:26:11	0	0	0	0	0
2	MIP_NL__0PNPDE20101030_042537_000060563096_00033_45306_1749.N1	30OCT2010 04:25:37	30OCT2010 06:06:33	0	0	0	0	0
3	MIP_NL__0PNPDK20101030_060600_000040783096_00034_45307_3132.N1	30OCT2010 06:06:00	30OCT2010 07:13:58	0	0	0	0	0
4	MIP_NL__0PNPDK20101030_071251_000060683096_00035_45308_3133.N1	30OCT2010 07:12:51	30OCT2010 08:53:59	0	0	0	0	0
5	MIP_NL__0PNPDK20101030_085250_000060653096_00036_45309_3134.N1	30OCT2010 08:52:50	30OCT2010 10:33:55	0	0	0	0	0
6	MIP_NL__0PNPDK20101030_103219_000060523096_00037_45310_3135.N1	30OCT2010 10:32:19	30OCT2010 12:13:11	0	0	0	0	0
7	MIP_NL__0PNPDK20101030_121156_000060573096_00038_45311_3136.N1	30OCT2010 12:11:56	30OCT2010 13:52:53	1	1	0	0	0
8	MIP_NL__0PNPDK20101030_135154_000058163096_00039_45312_3137.N1	30OCT2010 13:51:54	30OCT2010 15:28:50	0	0	0	0	0
9	MIP_NL__0PNPDK20101030_152739_000059953096_00040_45313_3138.N1	30OCT2010 15:27:39	30OCT2010 17:07:34	0	0	0	0	0
10	MIP_NL__0PNPDK20101030_170650_000058163096_00041_45314_3139.N1	30OCT2010 17:06:50	30OCT2010 18:43:46	0	0	0	0	0
11	MIP_NL__0PNPDK20101030_184246_000061213096_00042_45315_3140.N1	30OCT2010 18:42:46	30OCT2010 20:24:47	0	0	0	0	0
12	MIP_NL__0PNPDE20101030_202331_000043493096_00043_45316_1750.N1	30OCT2010 20:23:31	30OCT2010 21:36:01	0	0	0	0	0
13	MIP_NL__0PNPDE20101030_213454_000061583096_00043_45316_1751.N1	30OCT2010 21:34:54	30OCT2010 23:17:32	0	0	0	0	0
14	MIP_NL__0PNPDE20101030_231625_000060063096_00044_45317_1752.N1	30OCT2010 23:16:25	31OCT2010 00:56:31	0	0	0	0	0

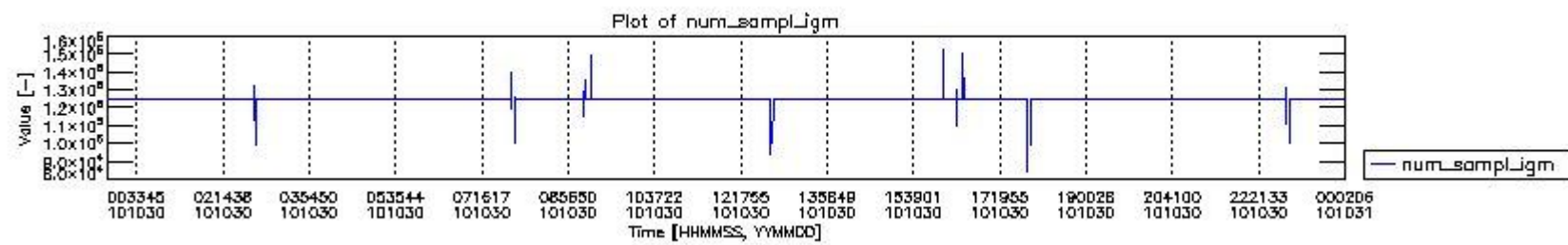
0.2 Instrument Operational Performance Parameters

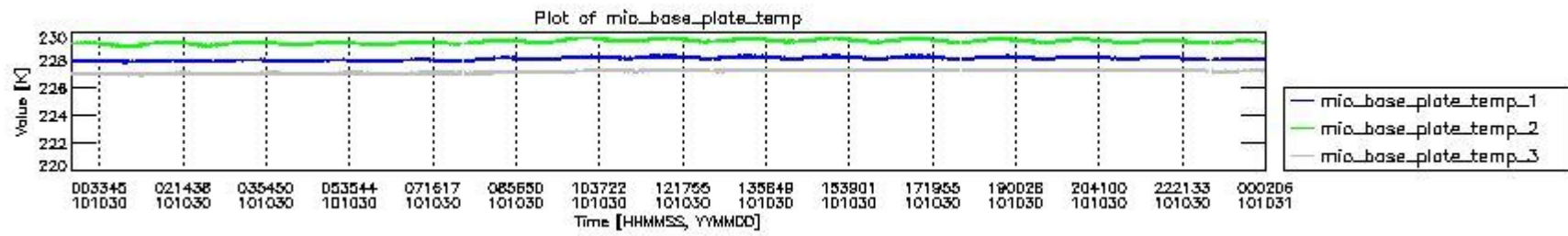
The following plots give an overview of various instrument parameters for this day. The instrument parameters are part of the auxiliary data field within the source packets of the MIP_NL__0P product. The auxiliary data is normally included twice per interferogram. Note that only the first packet is currently included in monitoring.

The following table shows the counts of various interferogram number of samples

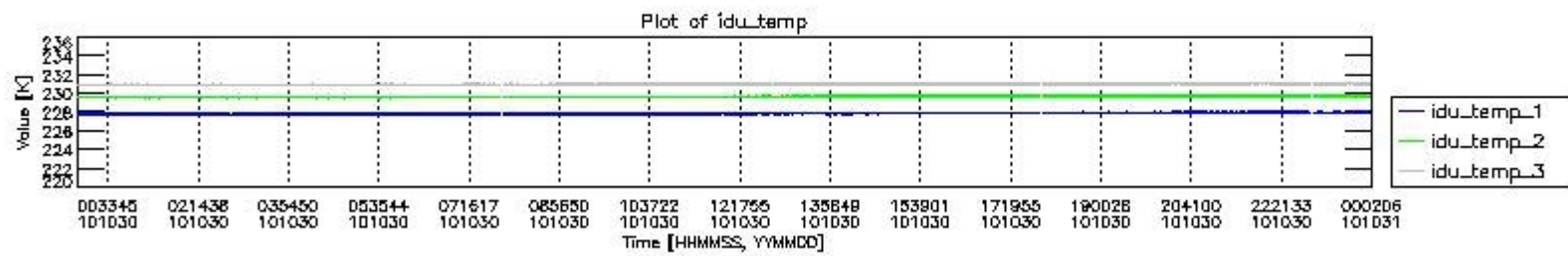
Number of igm samples	Count [#]	Count [%]
84676	1	0.0024372410
93746	1	0.0024372410
94672	1	0.0024372410

99207	1	0.0024372410
99591	1	0.0024372410
99665	1	0.0024372410
99739	1	0.0024372410
99814	1	0.0024372410
99962	1	0.0024372410
110135	1	0.0024372410
111252	1	0.0024372410
112590	1	0.0024372410
114804	1	0.0024372410
114818	1	0.0024372410
115602	1	0.0024372410
117830	1	0.0024372410
119339	1	0.0024372410
119727	1	0.0024372410
120506	1	0.0024372410
124800	38104	92.868633
124803	2881	7.0216914
124843	1	0.0024372410
124886	1	0.0024372410
124917	1	0.0024372410
124968	1	0.0024372410
124991	1	0.0024372410
125034	1	0.0024372410
125066	1	0.0024372410
125182	1	0.0024372410
125214	1	0.0024372410
125332	1	0.0024372410
125628	1	0.0024372410
127085	1	0.0024372410
127679	1	0.0024372410
128794	1	0.0024372410
130267	1	0.0024372410
131381	1	0.0024372410
132719	1	0.0024372410
134780	1	0.0024372410
134950	1	0.0024372410
139856	1	0.0024372410
147217	1	0.0024372410
147811	1	0.0024372410
148926	1	0.0024372410
149502	1	0.0024372410
150690	1	0.0024372410
152920	1	0.0024372410

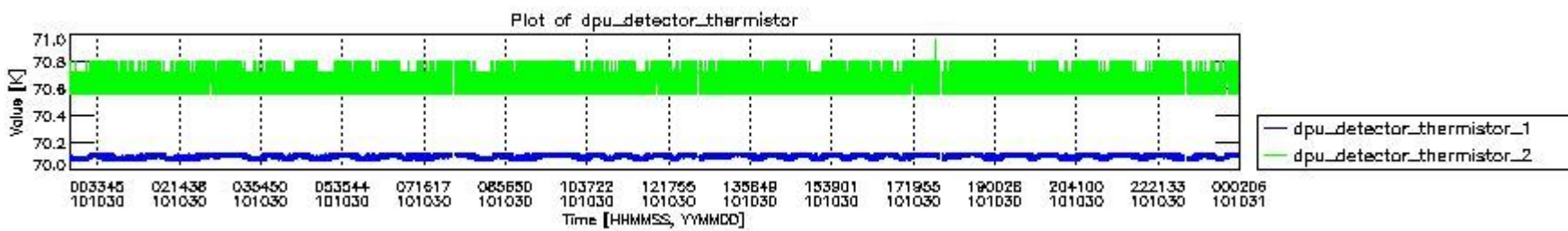




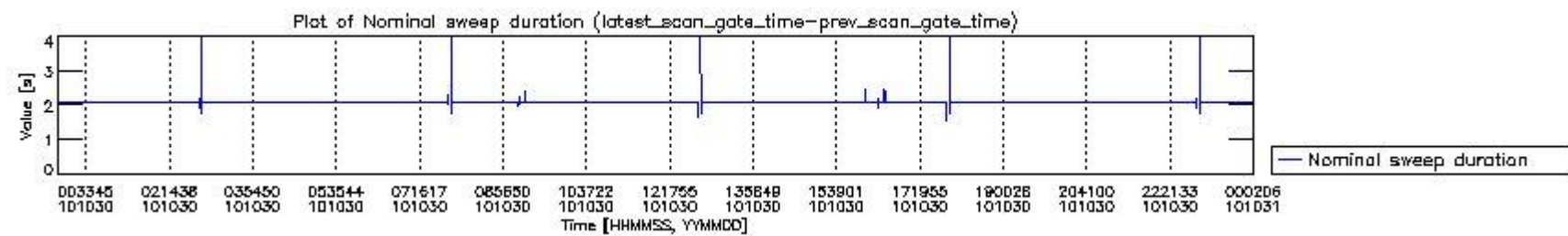
mipas_daily_report_level0_KSPT_L0_4504_N_20101030_1.PNG



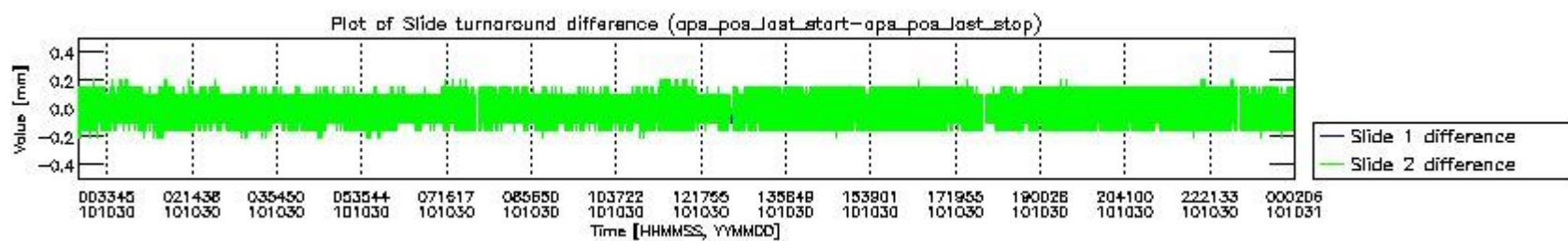
mipas_daily_report_level0_KSPT_L0_4504_N_20101030_2.PNG



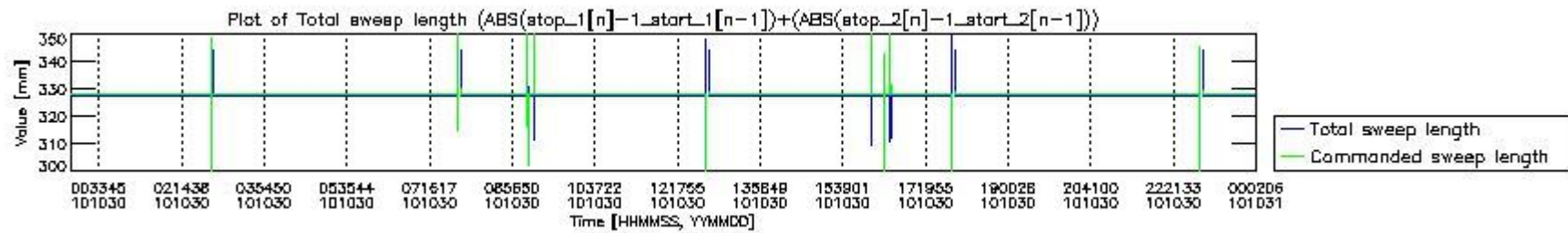
mipas_daily_report_level0_KSPT_L0_4504_N_20101030_3.PNG



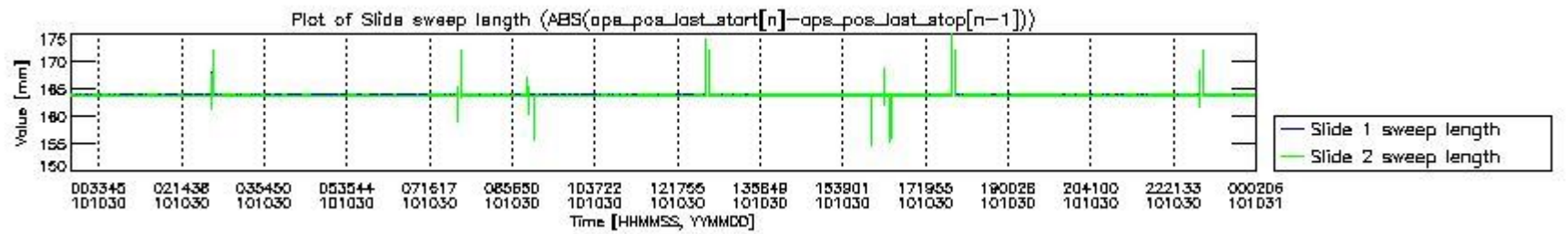
mipas_daily_report_level0_KSPT_L0_4504_N_20101030_4.PNG



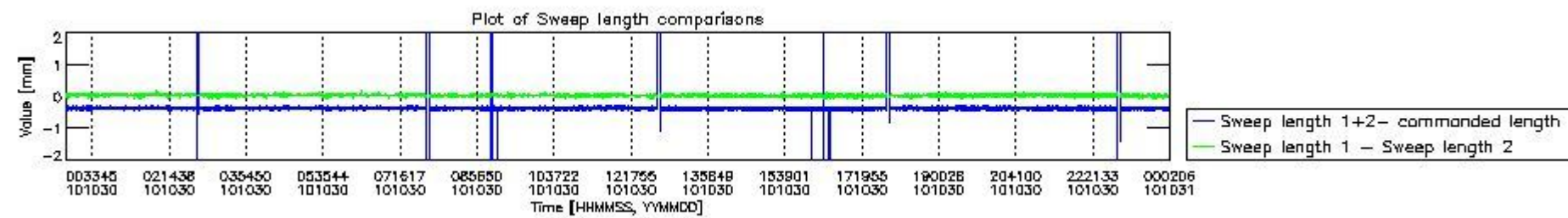
mipas_daily_report_level0_KSPT_L0_4504_N_20101030_5.PNG



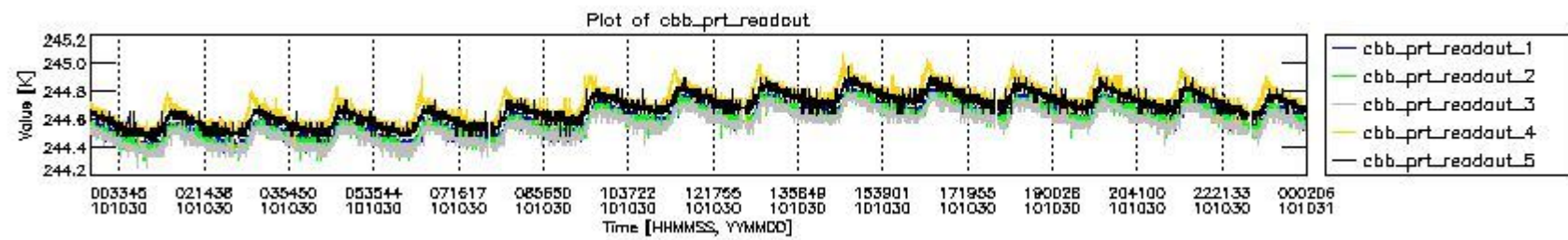
mipas_daily_report_level0_KSPT_L0_4504_N_20101030_6.PNG



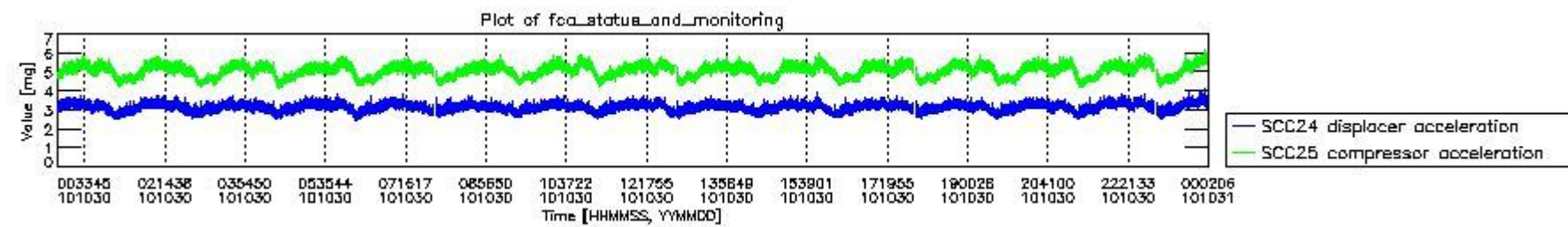
mipas_daily_report_level0_KSPT_L0_4504_N_20101030_7.PNG



mipas_daily_report_level0_KSPT_L0_4504_N_20101030_8.PNG



mipas_daily_report_level0_KSPT_L0_4504_N_20101030_9.PNG

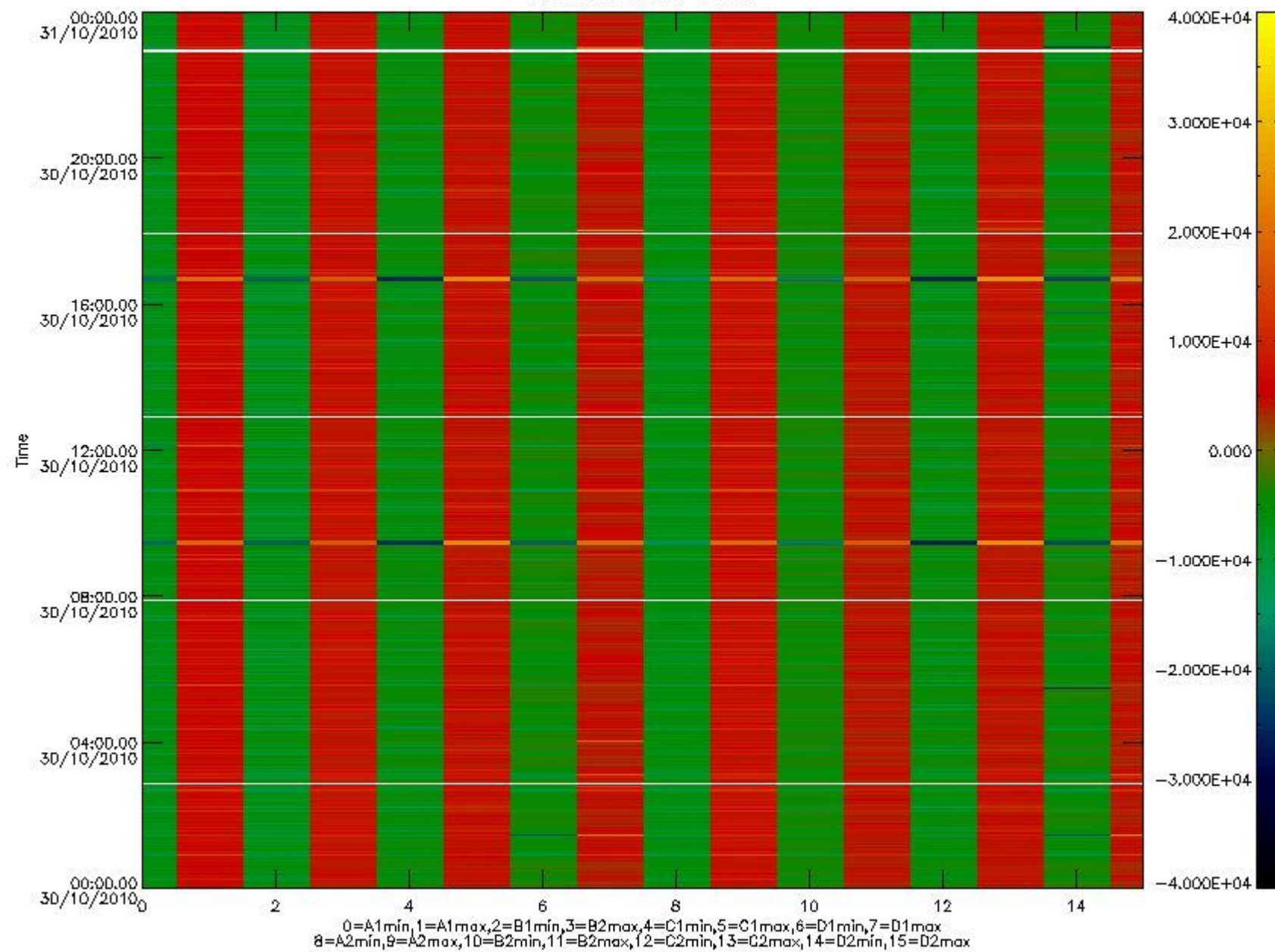


mipas_daily_report_level0_KSPT_L0_4504_N_20101030_10.PNG

The following table shows channel statistics for all channels for this day.

Channel	Min	Max	ADC
A1	-18747	19985	16bit
B1	-20711	17805	16bit
C1	-25279	25166	16bit
D1	-32768	32767	16bit
A2	-16148	20057	16bit
B2	-18806	18371	16bit
C2	-26287	25864	16bit
D2	-32768	32767	16bit

MIPNLOP_MIPSOUPAC_aux_fields_1gm_cal, channel statistics plot
Colour indicates value.



mipas_daily_report_level0_KSPT_L0_4504_N_20101030_11.PNG

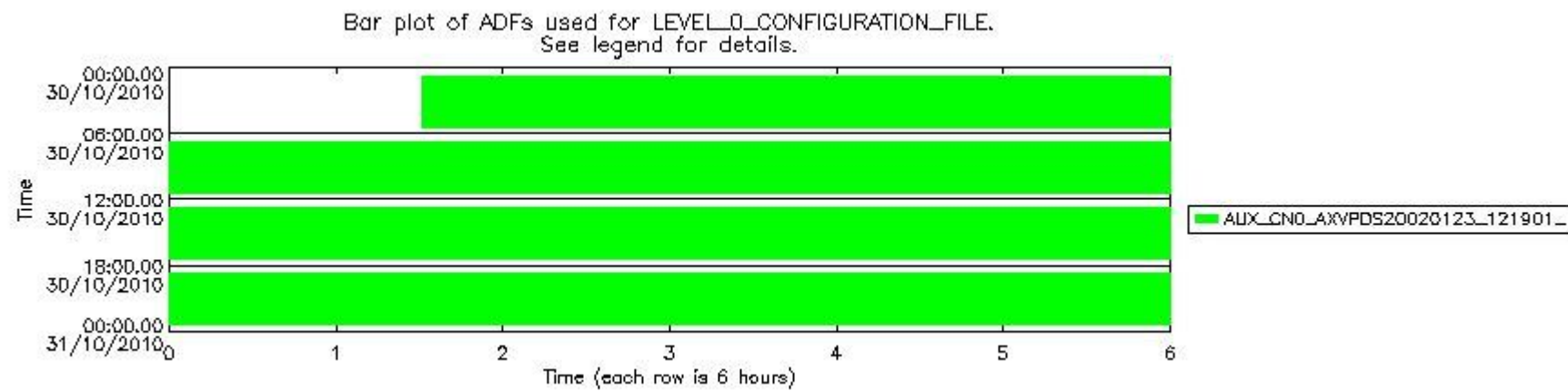
0.3 ADF monitoring

The use of ADFs is shown in two ways:

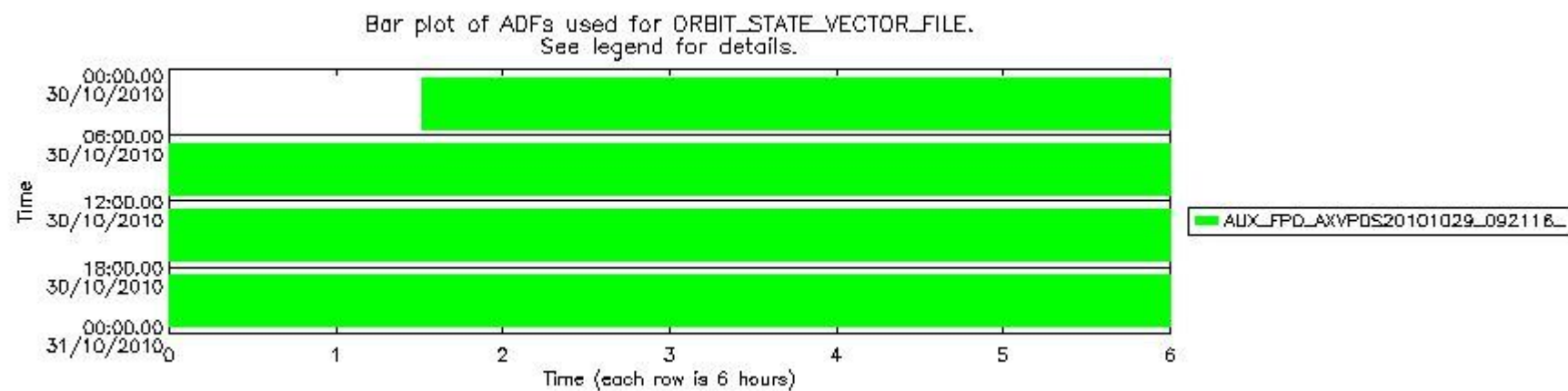
1. By means of two tables that can be used to find the ADF used for a specific product.
2. By means of plots that show changes in ADF using colours.

Number	ADF
0	AUX_CN0_AXVPDS20020123_121901_20020101_000000_20200101_000000
1	AUX_FPO_AXVPDS20101029_092116_20101028_194031_20101107_201423

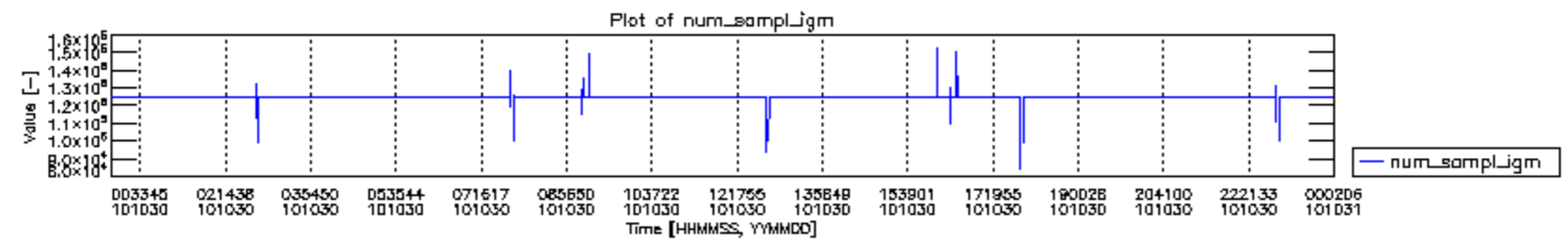
Number	Product name	#CNO	#FPO
0	MIP_NL_0PNPDE20101030_013112_000044103096_00031_45304_1747.N1	0	1
1	MIP_NL_0PNPDE20101030_024411_000061203096_00032_45305_1748.N1	0	1
2	MIP_NL_0PNPDE20101030_042537_000060563096_00033_45306_1749.N1	0	1
3	MIP_NL_0PNPDK20101030_060600_000040783096_00034_45307_3132.N1	0	1
4	MIP_NL_0PNPDK20101030_071251_000060683096_00035_45308_3133.N1	0	1
5	MIP_NL_0PNPDK20101030_085250_000060653096_00036_45309_3134.N1	0	1
6	MIP_NL_0PNPDK20101030_103219_000060523096_00037_45310_3135.N1	0	1
7	MIP_NL_0PNPDK20101030_121156_000060573096_00038_45311_3136.N1	0	1
8	MIP_NL_0PNPDK20101030_135154_000058163096_00039_45312_3137.N1	0	1
9	MIP_NL_0PNPDK20101030_152739_000059953096_00040_45313_3138.N1	0	1
10	MIP_NL_0PNPDK20101030_170650_000058163096_00041_45314_3139.N1	0	1
11	MIP_NL_0PNPDK20101030_184246_000061213096_00042_45315_3140.N1	0	1
12	MIP_NL_0PNPDE20101030_202331_000043493096_00043_45316_1750.N1	0	1
13	MIP_NL_0PNPDE20101030_213454_000061583096_00043_45316_1751.N1	0	1
14	MIP_NL_0PNPDE20101030_231625_000060063096_00044_45317_1752.N1	0	1

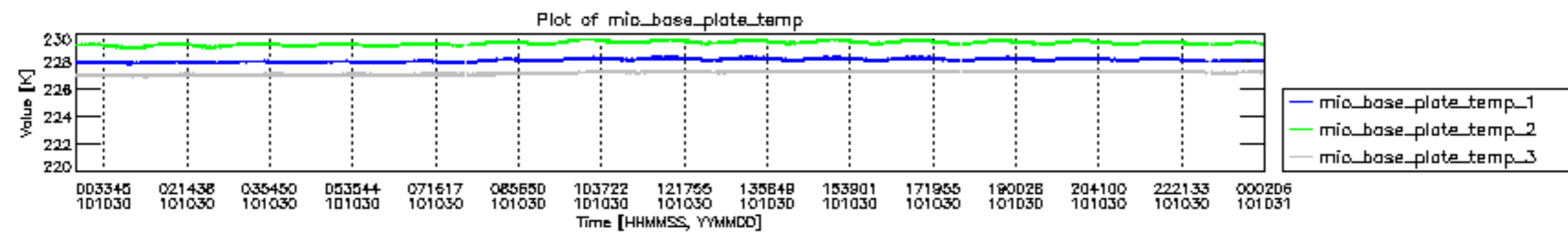


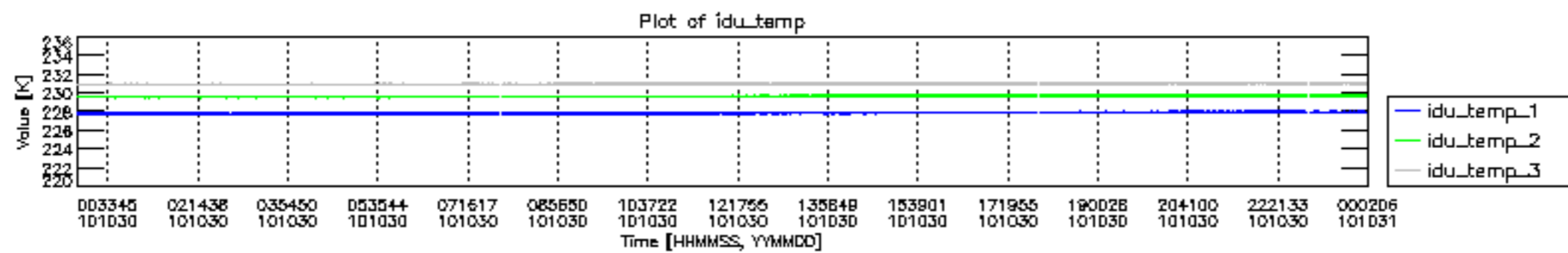
mipas_daily_report_level0_KSPT_L0_4504_N_20101030_12.PNG

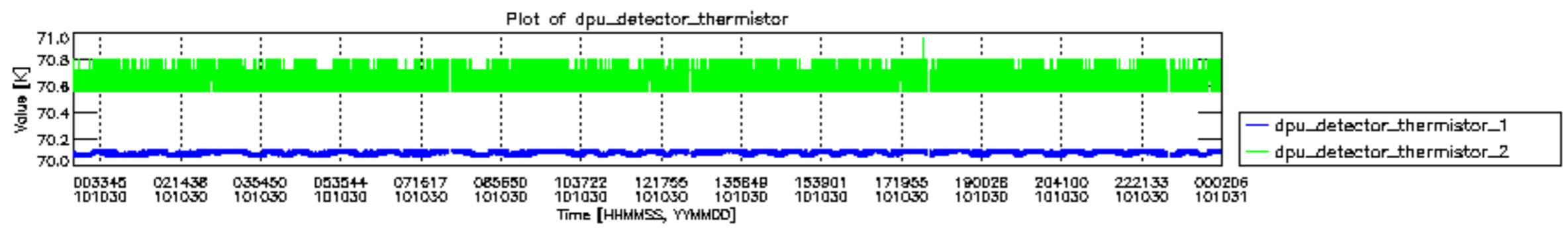


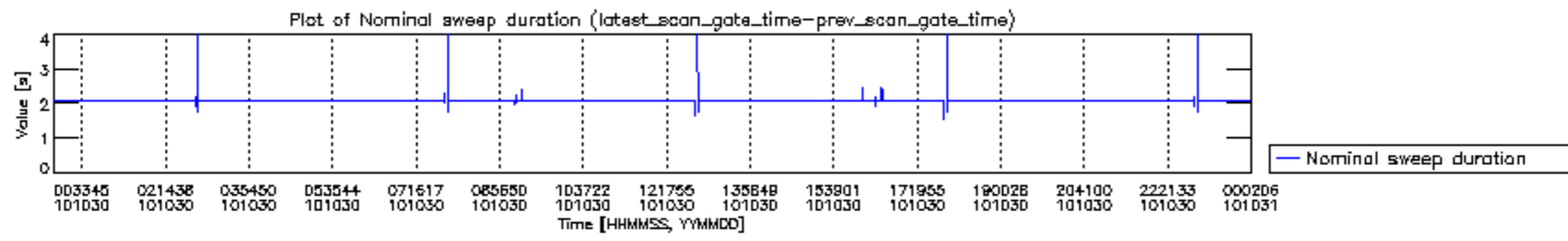
mipas_daily_report_level0_KSPT_L0_4504_N_20101030_13.PNG

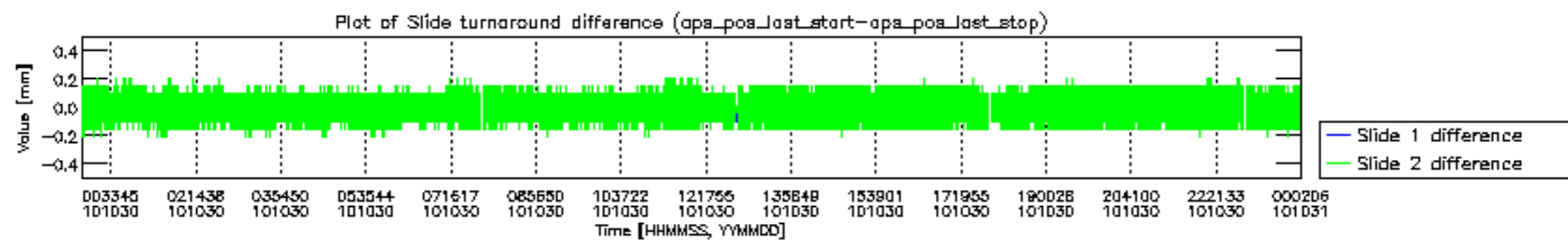


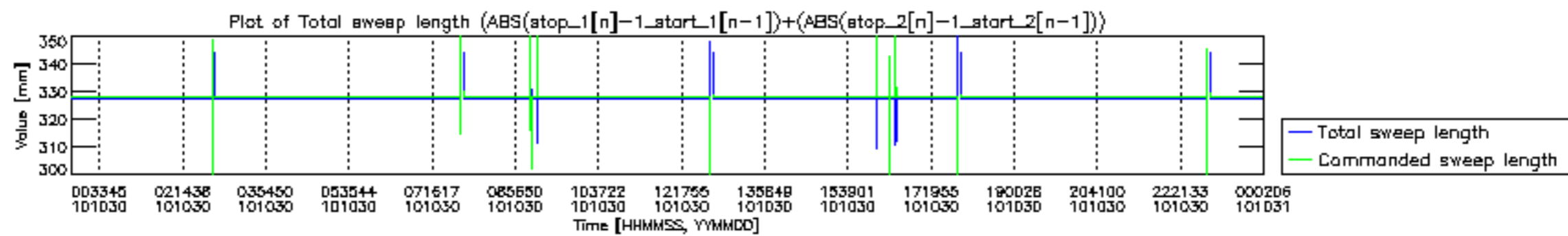


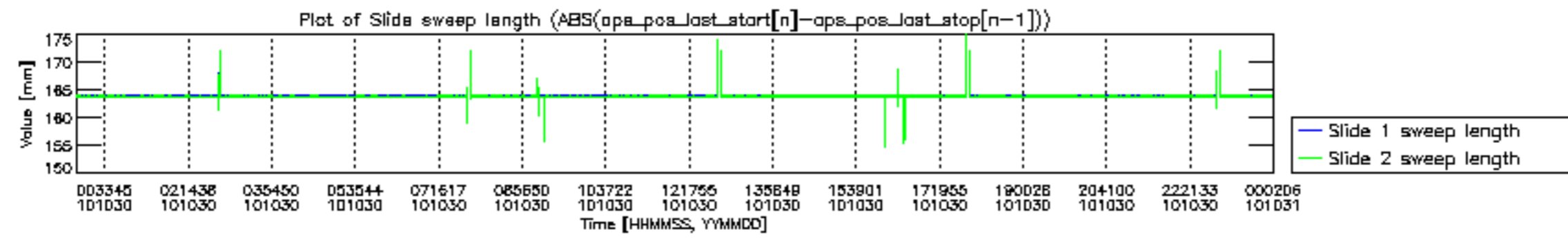


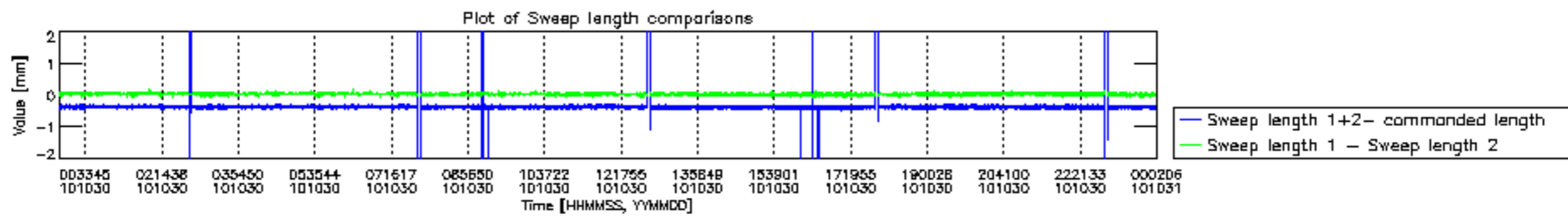


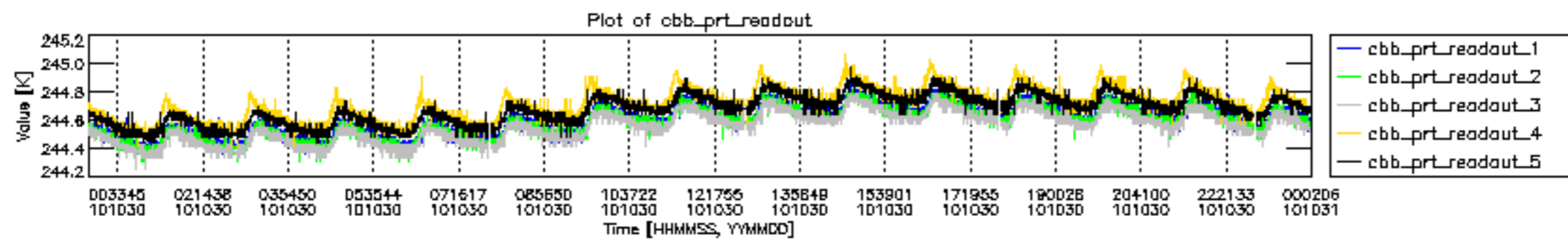


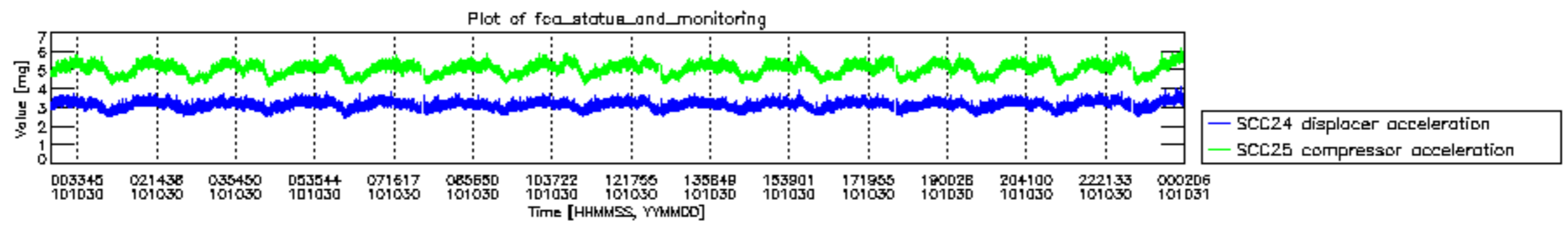












MIPNLOP_MIPSOUPAC_aux_fields_igm_cal, channel statistics plot
 Colour indicates value.

