

## 0. MIPAS Daily Report for level 0 products

### [0.1 General Info](#)

### [0.2 Instrument Operational Performance Parameters](#)

### [0.3 ADF monitoring](#)

## 0.1 General Info

This report contains a daily analysis on parameters extracted from MIPAS level 0 data (The MIP\_NL\_\_0P product).

### 0.1.1 Report summary

The table below shows general characteristics of the data that are included into this report.

Item	Value
Report version	v1.5 2008-02-08
Time of report generation	02NOV2010 17:59:50
Data source version	KSPT_L0/4504-N
Processing scope for products	28OCT2010 00:00:00 to 29OCT2010 00:00:00
Start time of first product within scope	28OCT2010 09:46:48
Stop time of last product within scope	29OCT2010 00:30:25
Total number of level 0 products	10
Number of level 0 products with errors	1

### 0.1.2 Product Quality Indicators per product

The following table shows a summary for each product used in this report.

#	Product name	Start time	Stop time	Prod err	ISP err sign	ISP miss sign	ISP disc sign	rs sign
0	MIP_NL__0PNPDK20101028_094648_000012843096_00008_45281_3117.N1	28OCT2010 09:46:48	28OCT2010 10:08:13	0	0	0	0	0
1	MIP_NL__0PNPDK20101028_100716_000060433096_00008_45281_3118.N1	28OCT2010 10:07:16	28OCT2010 11:48:00	0	0	0	0	0
2	MIP_NL__0PNPDK20101028_114624_000059983096_00009_45282_3119.N1	28OCT2010 11:46:24	28OCT2010 13:26:21	0	0	0	0	0
3	MIP_NL__0PNPDK20101028_132445_000058023096_00010_45283_3120.N1	28OCT2010 13:24:45	28OCT2010 15:01:27	0	0	0	0	0
4	MIP_NL__0PNPDK20101028_150025_000060073096_00011_45284_3121.N1	28OCT2010 15:00:25	28OCT2010 16:40:32	0	0	0	0	0
5	MIP_NL__0PNPDK20101028_163948_000059853096_00012_45285_3122.N1	28OCT2010 16:39:48	28OCT2010 18:19:33	0	0	0	0	0
6	MIP_NL__0PNPDK20101028_181843_000059583096_00013_45286_3123.N1	28OCT2010 18:18:43	28OCT2010 19:58:01	1	1	0	0	0
7	MIP_NL__0PNPDE20101028_195641_000040963096_00014_45287_1737.N1	28OCT2010 19:56:41	28OCT2010 21:04:57	0	0	0	0	0
8	MIP_NL__0PNPDE20101028_210401_000064513096_00014_45287_1738.N1	28OCT2010 21:04:01	28OCT2010 22:51:32	0	0	0	0	0
9	MIP_NL__0PNPDE20101028_225034_000059923096_00015_45288_1739.N1	28OCT2010 22:50:34	29OCT2010 00:30:25	0	0	0	0	0

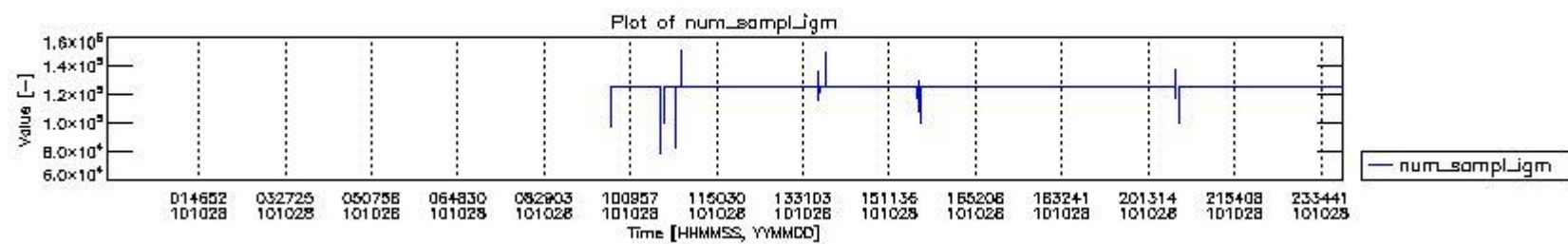
## 0.2 Instrument Operational Performance Parameters

The following plots give an overview of various instrument parameters for this day. The instrument parameters are part of the auxiliary data field within the source packets of the MIP\_NL\_\_0P product. The auxiliary data is normally included twice per interferogram. Note that only the first packet is currently included in monitoring.

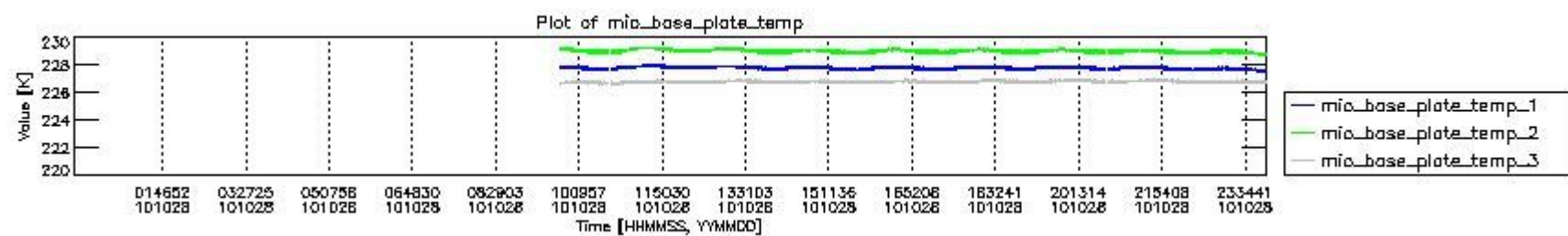
The following table shows the counts of various interferogram number of samples

Number of igm samples	Count [#]	Count [%]
78728	1	0.0041064389
82446	1	0.0041064389
91698	1	0.0041064389
93557	1	0.0041064389
97658	1	0.0041064389
99665	1	0.0041064389
99739	1	0.0041064389
99814	1	0.0041064389

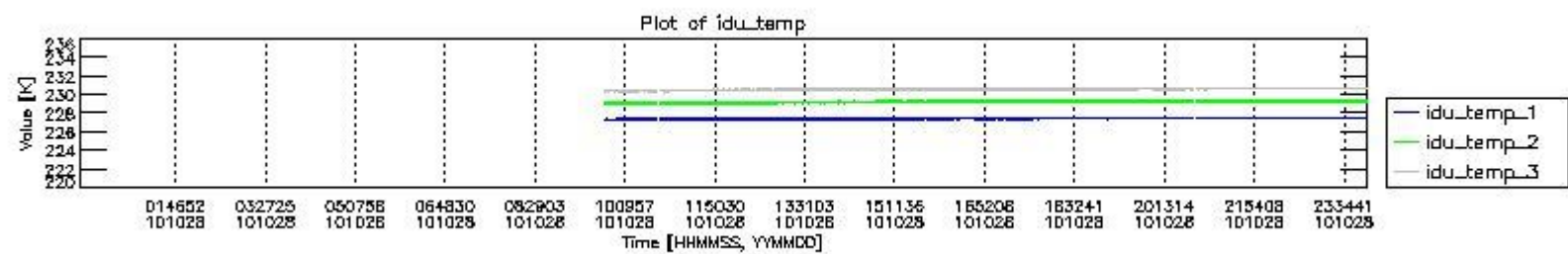
108648	1	0.0041064389
111830	1	0.0041064389
112628	1	0.0041064389
113689	1	0.0041064389
116454	1	0.0041064389
117422	1	0.0041064389
121020	1	0.0041064389
122910	1	0.0041064389
124800	22628	92.920499
124803	1691	6.9439882
124917	1	0.0041064389
124991	1	0.0041064389
125034	1	0.0041064389
125066	1	0.0041064389
125182	1	0.0041064389
125332	1	0.0041064389
126713	1	0.0041064389
127456	1	0.0041064389
128240	1	0.0041064389
128780	1	0.0041064389
130170	1	0.0041064389
136586	1	0.0041064389
137551	1	0.0041064389
146845	1	0.0041064389
147588	1	0.0041064389
148758	1	0.0041064389
150244	1	0.0041064389



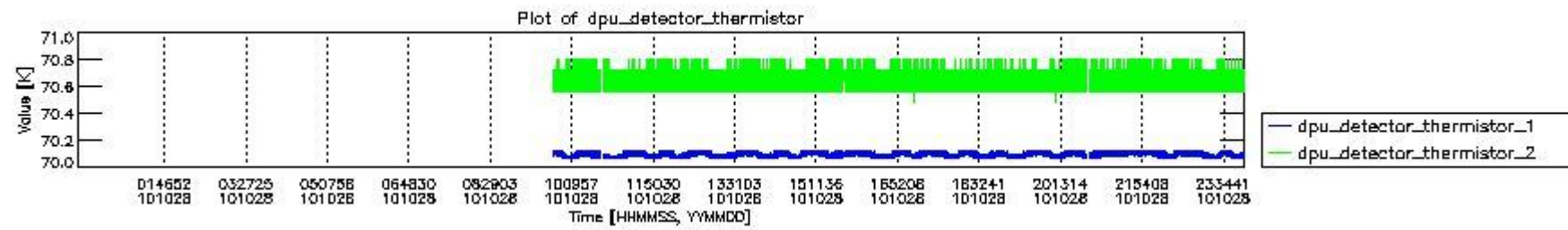
mipas\_daily\_report\_level0\_KSPT\_L0\_4504\_N\_20101028\_0.PNG



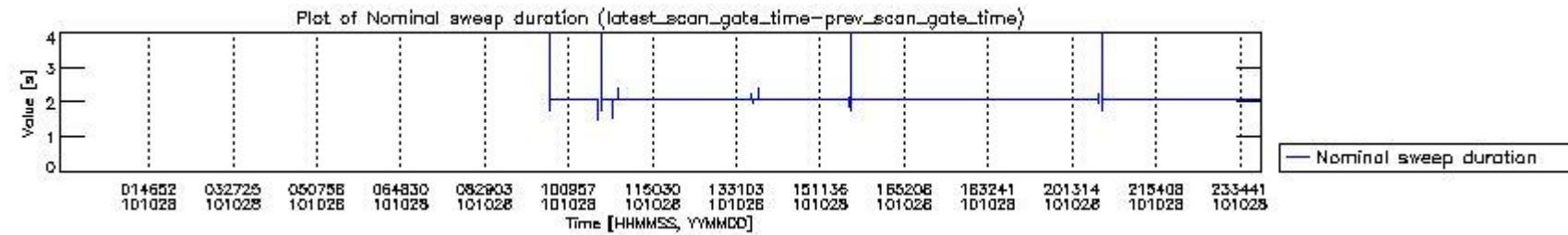
mipas\_daily\_report\_level0\_KSPT\_L0\_4504\_N\_20101028\_1.PNG



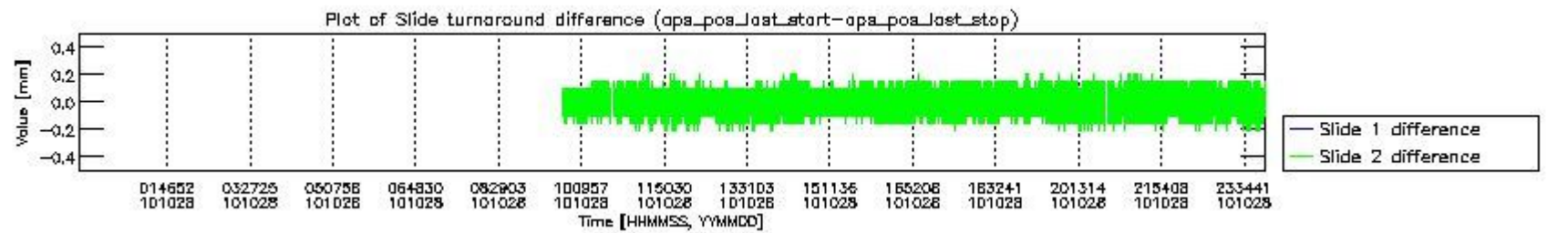
mipas\_daily\_report\_level0\_KSPT\_L0\_4504\_N\_20101028\_2.PNG



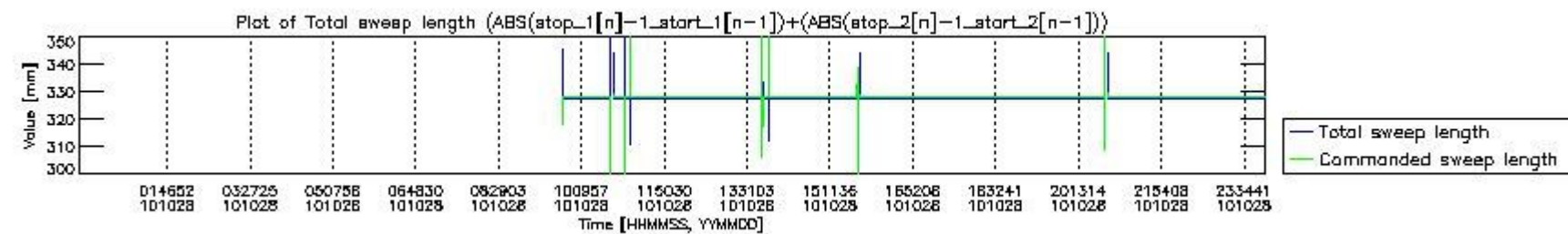
mipas\_daily\_report\_level0\_KSPT\_L0\_4504\_N\_20101028\_3.PNG



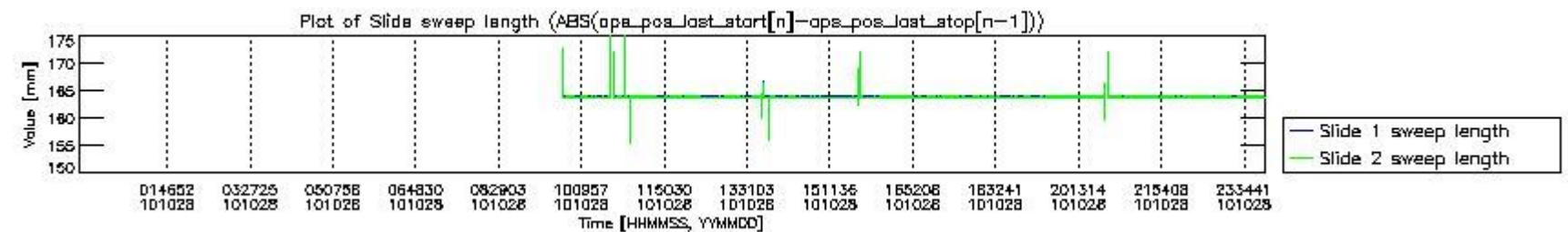
mipas\_daily\_report\_level0\_KSPT\_L0\_4504\_N\_20101028\_4.PNG



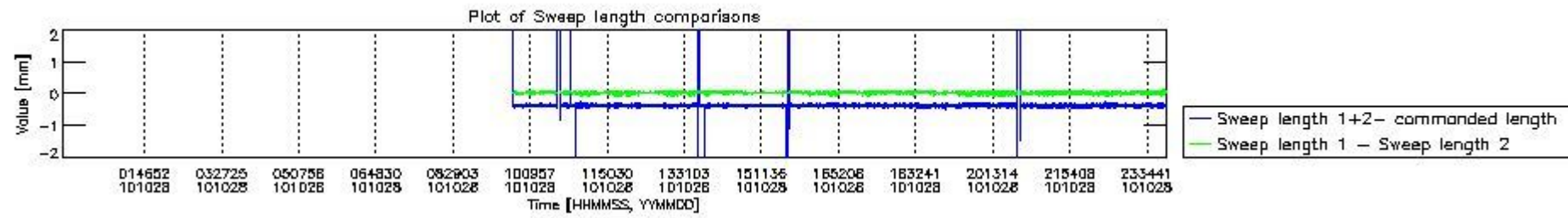
mipas\_daily\_report\_level0\_KSPT\_L0\_4504\_N\_20101028\_5.PNG



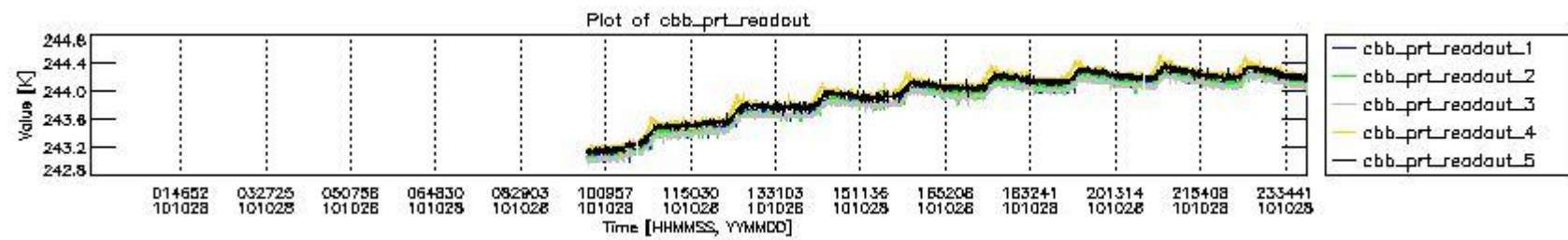
mipas\_daily\_report\_level0\_KSPT\_L0\_4504\_N\_20101028\_6.PNG



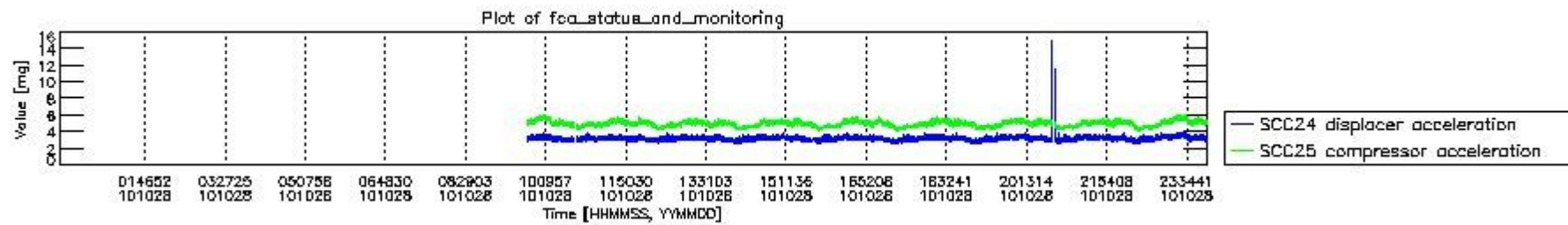
mipas\_daily\_report\_level0\_KSPT\_L0\_4504\_N\_20101028\_7.PNG



mipas\_daily\_report\_level0\_KSPT\_L0\_4504\_N\_20101028\_8.PNG



mipas\_daily\_report\_level0\_KSPT\_L0\_4504\_N\_20101028\_9.PNG

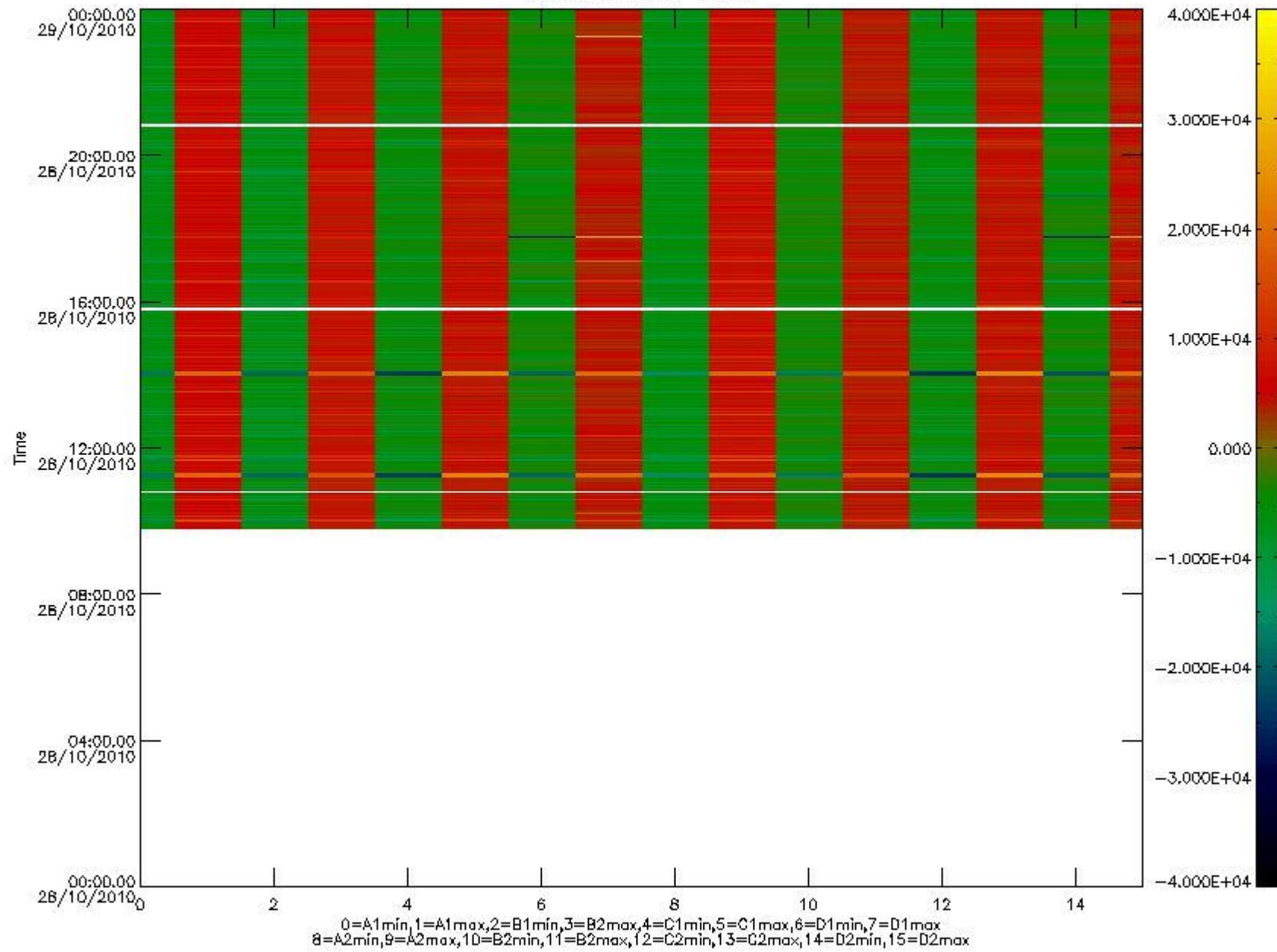


mipas\_daily\_report\_level0\_KSPT\_L0\_4504\_N\_20101028\_10.PNG

The following table shows channel statistics for all channels for this day.

Channel	Min	Max	ADC
A1	-19539	21245	16bit
B1	-20114	17384	16bit
C1	-25502	24088	16bit
D1	-32768	32767	16bit
A2	-16614	20719	16bit
B2	-17936	17607	16bit
C2	-25156	24755	16bit
D2	-32768	32767	16bit

MIPNLOP\_MIPSOUPAC\_aux\_fields\_igm\_cal, channel statistics plot  
Colour indicates value.



mipas\_daily\_report\_level0\_KSPT\_L0\_4504\_N\_20101028\_11.PNG

### 0.3 ADF monitoring

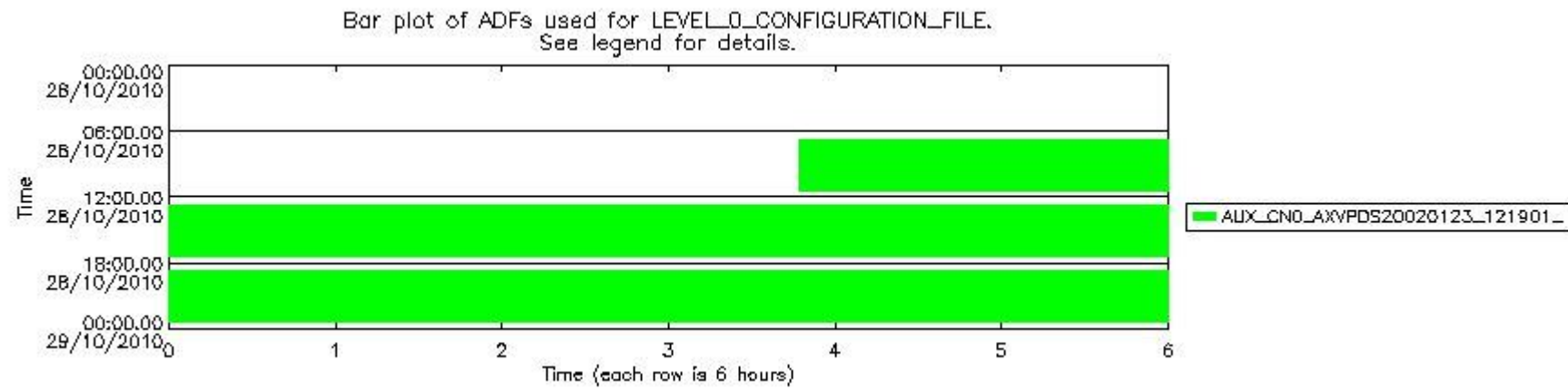
The use of ADFs is shown in two ways:

1. By means of two tables that can be used to find the ADF used for a specific product.
2. By means of plots that show changes in ADF using colours.

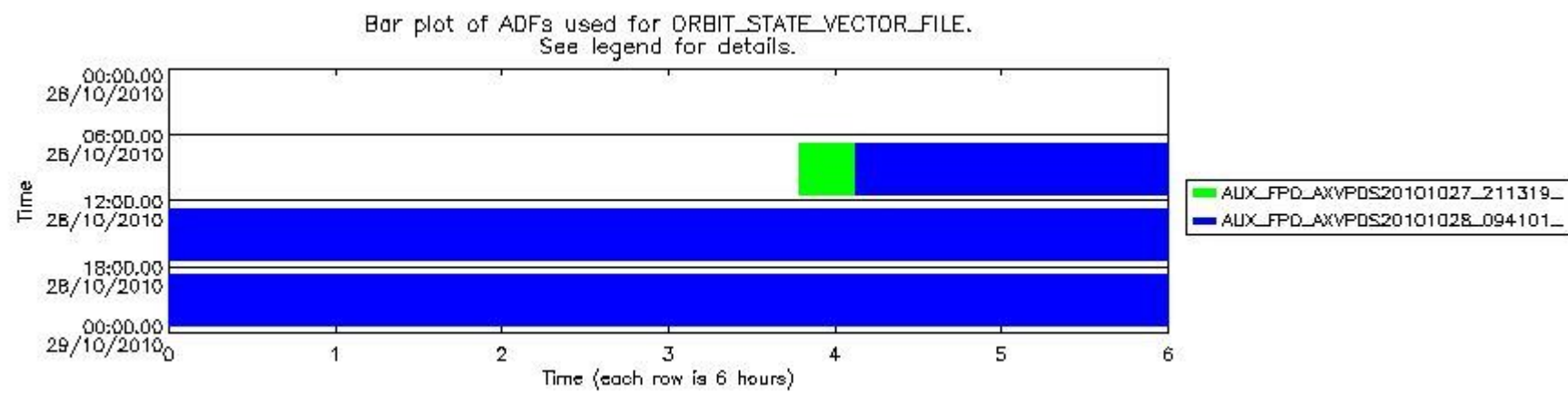
Number	ADF
0	AUX_CN0_AXVPDS20020123_121901_20020101_000000_20200101_000000
1	AUX_FPO_AXVPDS20101027_211319_20101026_191341_20101105_212750
2	AUX_FPO_AXVPDS20101028_094101_20101027_183659_20101106_205107

Number	Product name	#CN0	#FPO
--------	--------------	------	------

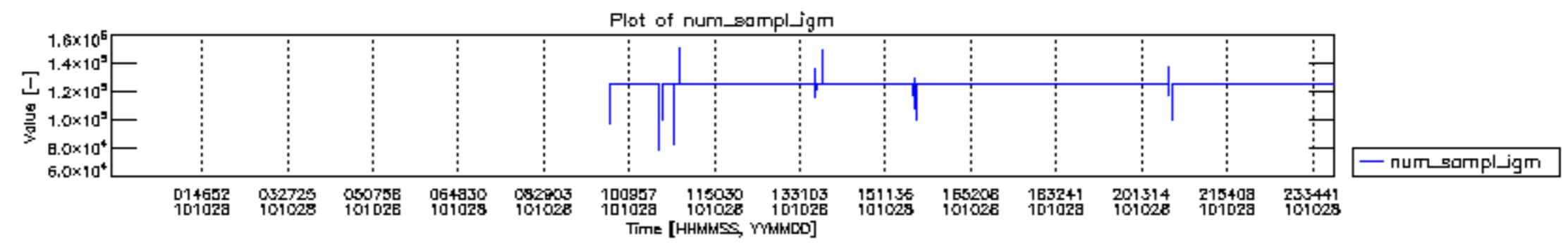
0	MIP_NL__0PNPDK20101028_094648_000012843096_00008_45281_3117.N1	0	1
1	MIP_NL__0PNPDK20101028_100716_000060433096_00008_45281_3118.N1	0	2
2	MIP_NL__0PNPDK20101028_114624_000059983096_00009_45282_3119.N1	0	2
3	MIP_NL__0PNPDK20101028_132445_000058023096_00010_45283_3120.N1	0	2
4	MIP_NL__0PNPDK20101028_150025_000060073096_00011_45284_3121.N1	0	2
5	MIP_NL__0PNPDK20101028_163948_000059853096_00012_45285_3122.N1	0	2
6	MIP_NL__0PNPDK20101028_181843_000059583096_00013_45286_3123.N1	0	2
7	MIP_NL__0PNPDE20101028_195641_000040963096_00014_45287_1737.N1	0	2
8	MIP_NL__0PNPDE20101028_210401_000064513096_00014_45287_1738.N1	0	2
9	MIP_NL__0PNPDE20101028_225034_000059923096_00015_45288_1739.N1	0	2

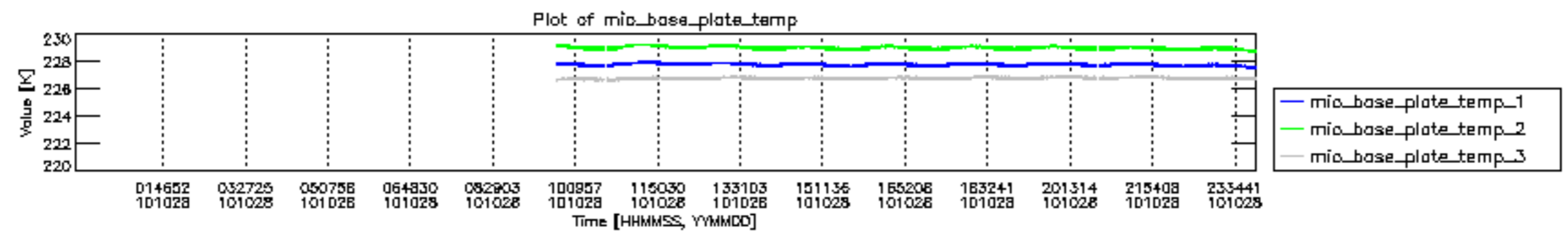


mipas\_daily\_report\_level0\_KSPT\_L0\_4504\_N\_20101028\_12.PNG

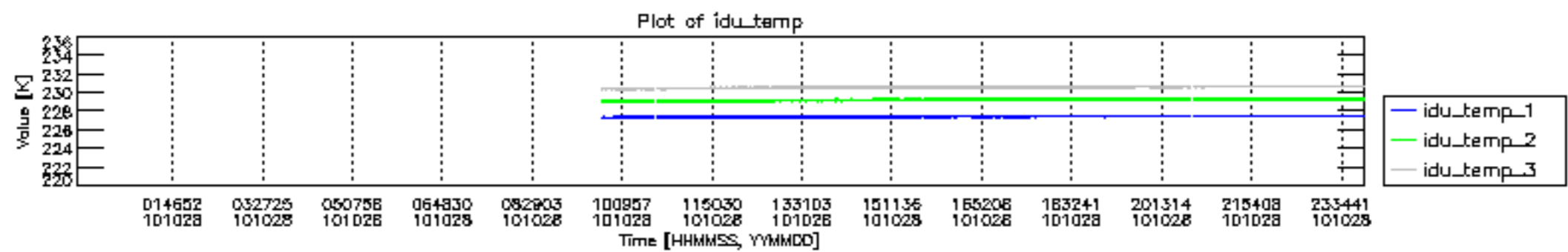


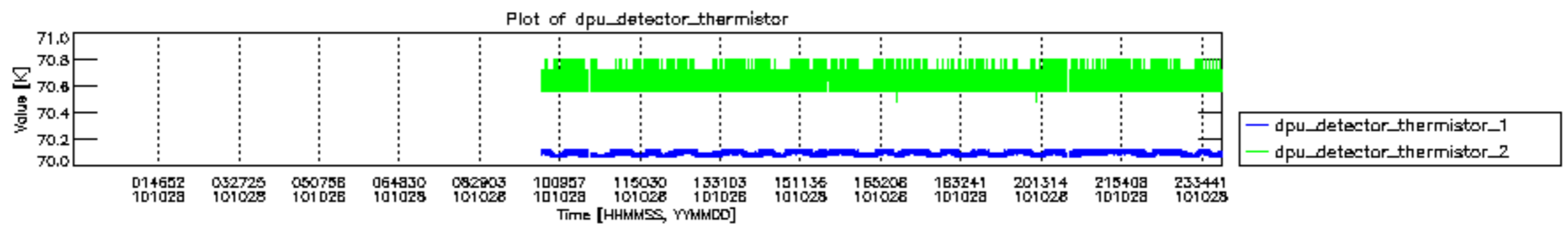
mipas\_daily\_report\_level0\_KSPT\_L0\_4504\_N\_20101028\_13.PNG

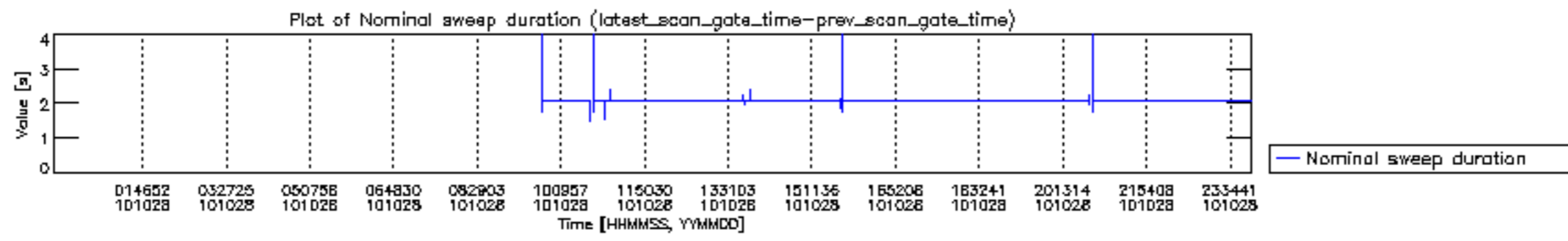


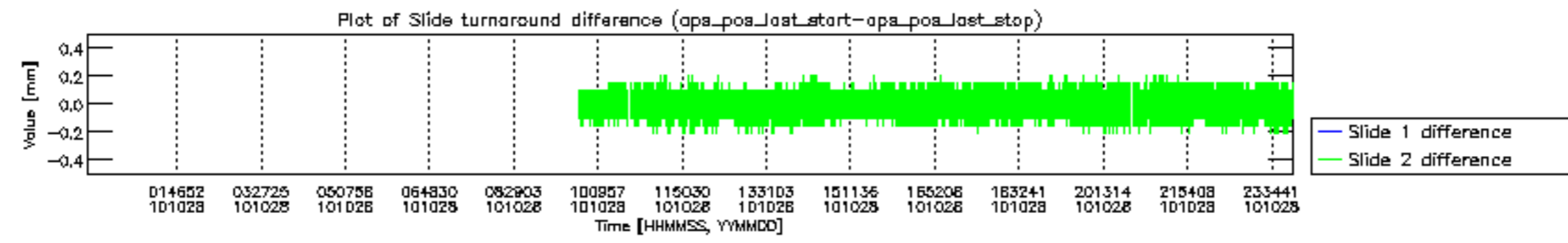


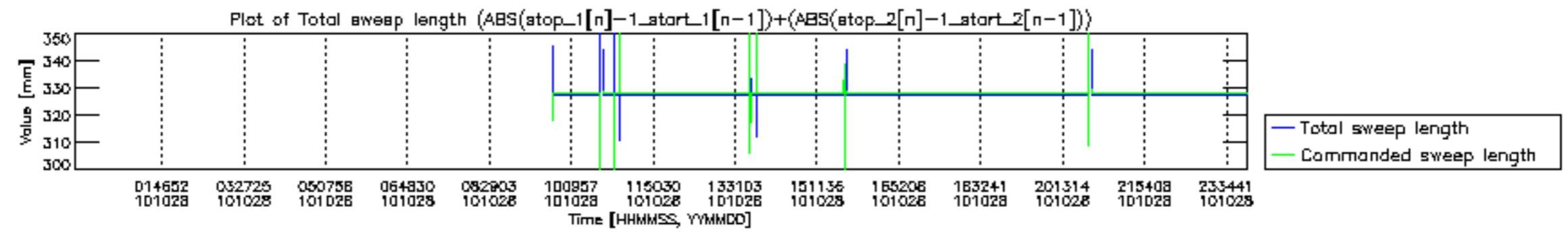


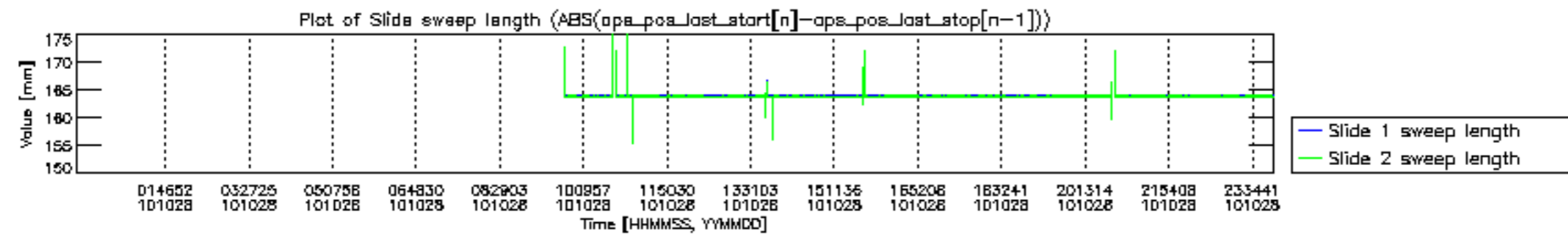


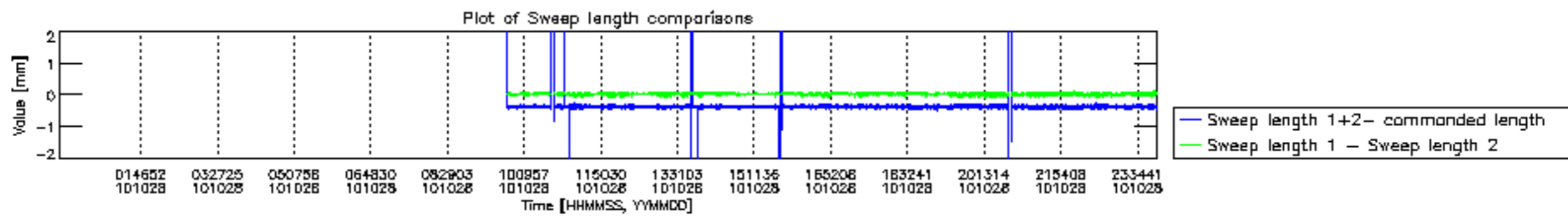


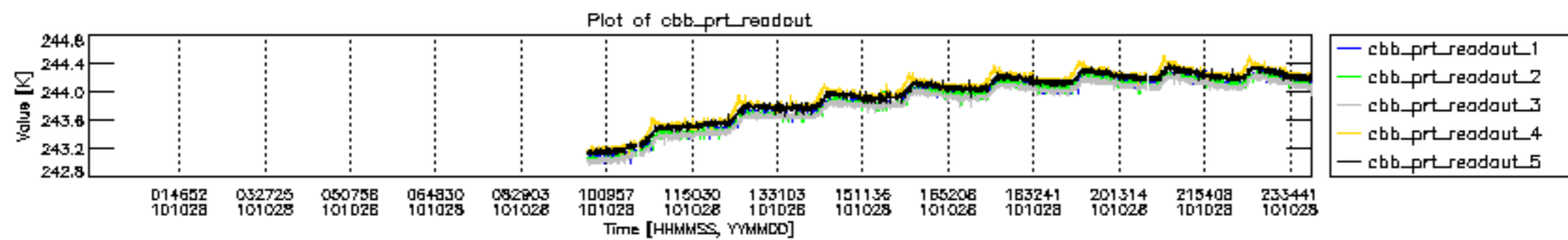




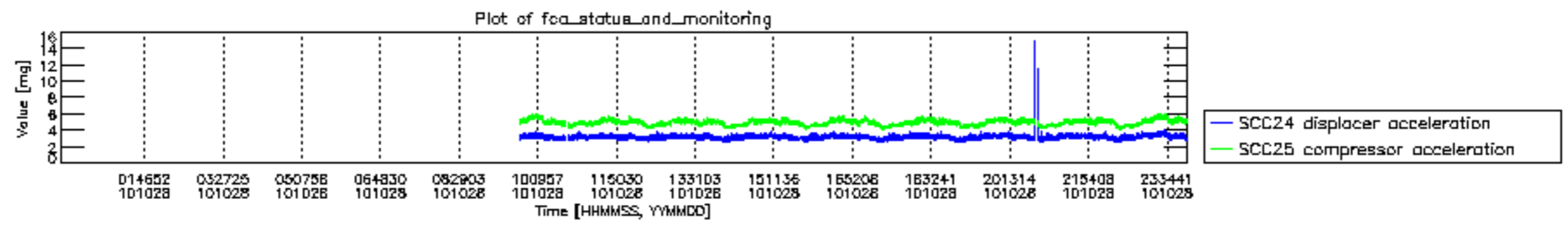












MIPNLOP\_MIPSOUPAC\_aux\_fields\_igm\_cal, channel statistics plot  
 Colour indicates value.

