

## 0. MIPAS Daily Report for level 0 products

### [0.1 General Info](#)

### [0.2 Instrument Operational Performance Parameters](#)

### [0.3 ADF monitoring](#)

## 0.1 General Info

This report contains a daily analysis on parameters extracted from MIPAS level 0 data (The MIP\_NL\_\_0P product).

### 0.1.1 Report summary

The table below shows general characteristics of the data that are included into this report.

Item	Value
Report version	v1.5 2008-02-08
Time of report generation	26OCT2010 05:20:07
Data source version	KSPT_L0/4504-N
Processing scope for products	21OCT2010 00:00:00 to 22OCT2010 00:00:00
Start time of first product within scope	21OCT2010 06:20:24
Stop time of last product within scope	21OCT2010 23:50:11
Total number of level 0 products	10
Number of level 0 products with errors	1

### 0.1.2 Product Quality Indicators per product

The following table shows a summary for each product used in this report.

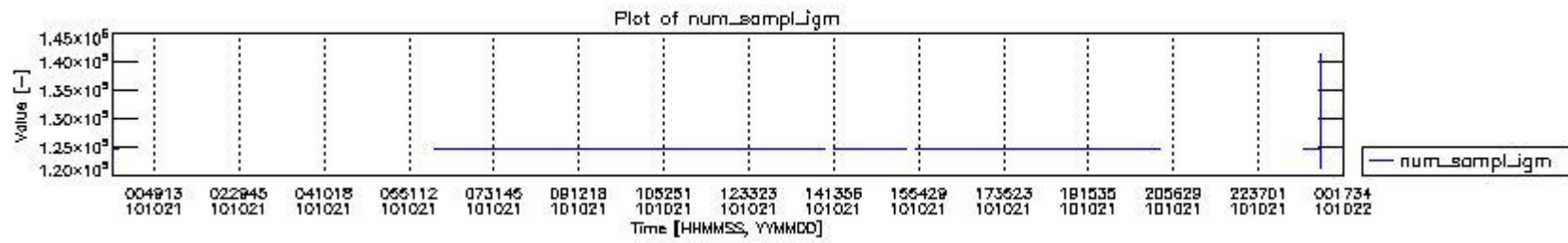
#	Product name	Start time	Stop time	Prod err	ISP err sign	ISP miss sign	ISP disc sign	rs sign
0	MIP_NL__0PNPDK20101021_062024_000040262094_00034_45178_3107.N1	21OCT2010 06:20:24	21OCT2010 07:27:30	0	0	0	0	0
1	MIP_NL__0PNPDK20101021_072632_000062592094_00035_45179_3108.N1	21OCT2010 07:26:32	21OCT2010 09:10:50	0	0	0	0	0
2	MIP_NL__0PNPDK20101021_090939_000059852094_00036_45180_3109.N1	21OCT2010 09:09:39	21OCT2010 10:49:25	1	1	0	0	0
3	MIP_NL__0PNPDK20101021_104746_000059662094_00037_45181_3110.N1	21OCT2010 10:47:46	21OCT2010 12:27:13	0	0	0	0	0
4	MIP_NL__0PNPDK20101021_122535_000057932094_00038_45182_3111.N1	21OCT2010 12:25:35	21OCT2010 14:02:08	0	0	0	0	0
5	MIP_NL__0PNPDK20101021_141327_000051852094_00039_45183_3112.N1	21OCT2010 14:13:27	21OCT2010 15:39:52	0	0	0	0	0
6	MIP_NL__0PNPDK20101021_155040_000055052094_00040_45184_3113.N1	21OCT2010 15:50:40	21OCT2010 17:22:25	0	0	0	0	0
7	MIP_NL__0PNPDK20101021_172141_000058992094_00041_45185_3114.N1	21OCT2010 17:21:41	21OCT2010 19:00:00	0	0	0	0	0
8	MIP_NL__0PNPDK20101021_185814_000060732094_00042_45186_3115.N1	21OCT2010 18:58:14	21OCT2010 20:39:26	0	0	0	0	0
9	MIP_NL__0PNPDK20101021_233055_000011562094_00044_45188_3116.N1	21OCT2010 23:30:55	21OCT2010 23:50:11	0	0	0	0	0

## 0.2 Instrument Operational Performance Parameters

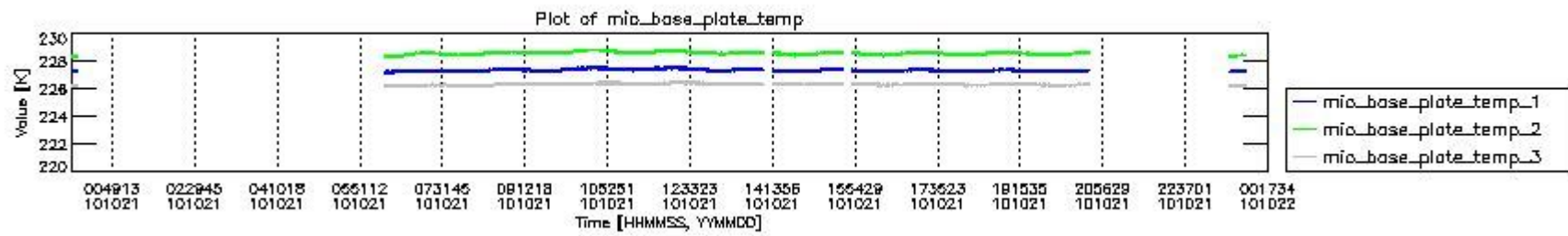
The following plots give an overview of various instrument parameters for this day. The instrument parameters are part of the auxiliary data field within the source packets of the MIP\_NL\_\_0P product. The auxiliary data is normally included twice per interferogram. Note that only the first packet is currently included in monitoring.

The following table shows the counts of various interferogram number of samples

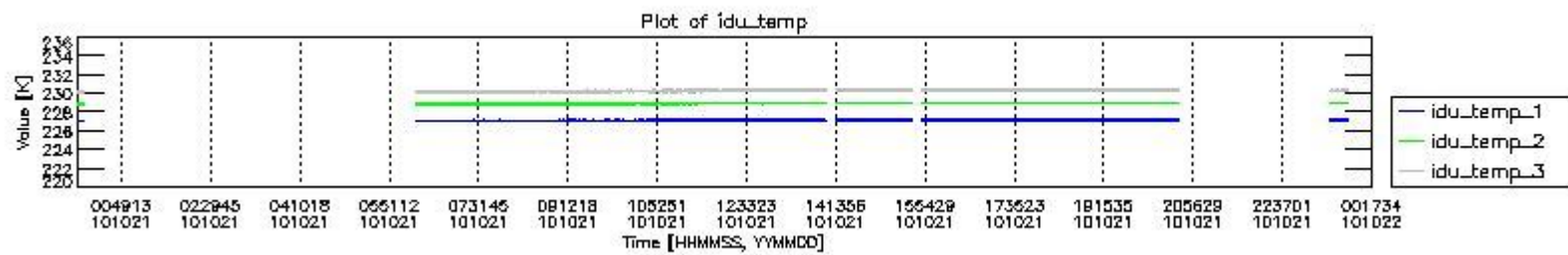
Number of igm samples	Count [#]	Count [%]
121360	1	0.0040078554
124800	23162	92.829947
124803	1786	7.1580297
138052	1	0.0040078554
141492	1	0.0040078554



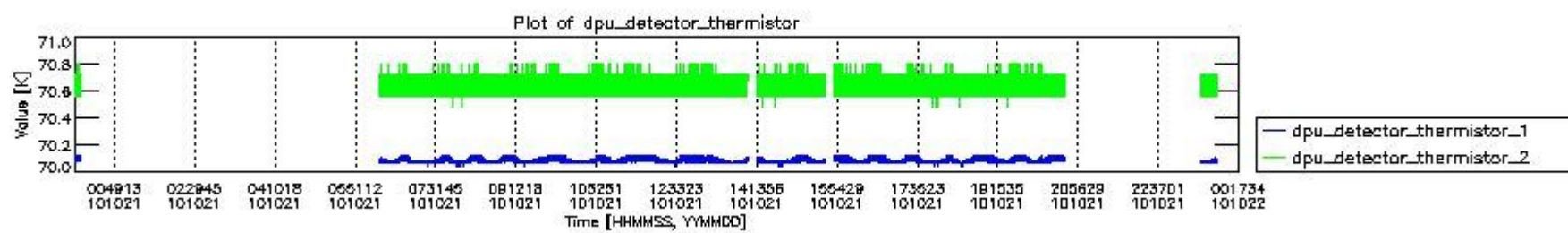
mipas\_daily\_report\_level0\_KSPT\_L0\_4504\_N\_20101021\_0.PNG



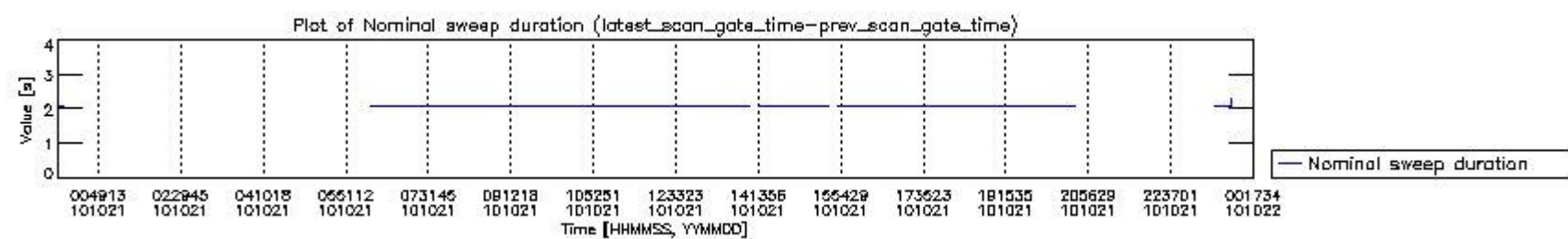
mipas\_daily\_report\_level0\_KSPT\_L0\_4504\_N\_20101021\_1.PNG



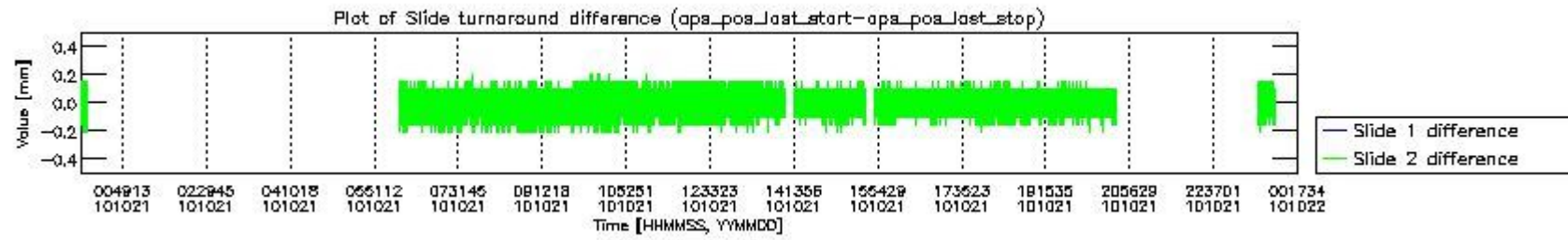
mipas\_daily\_report\_level0\_KSPT\_L0\_4504\_N\_20101021\_2.PNG



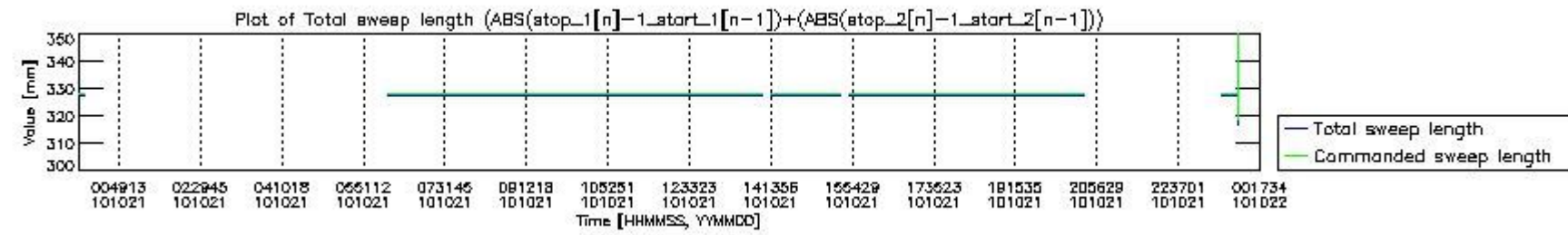
mipas\_daily\_report\_level0\_KSPT\_L0\_4504\_N\_20101021\_3.PNG



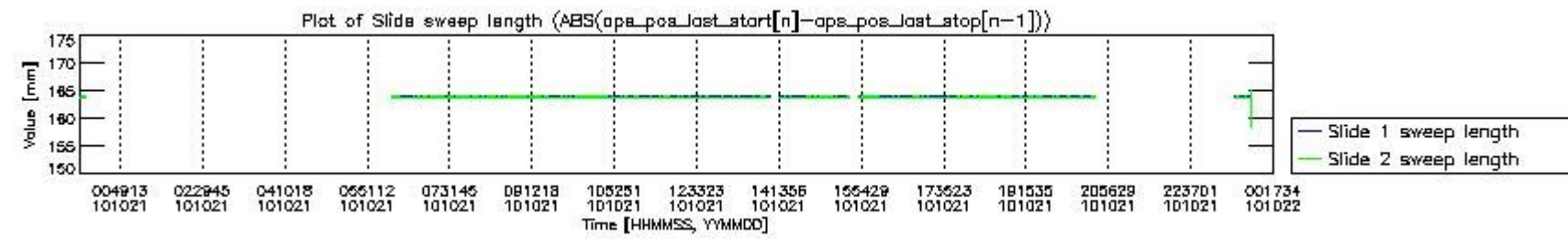
mipas\_daily\_report\_level0\_KSPT\_L0\_4504\_N\_20101021\_4.PNG



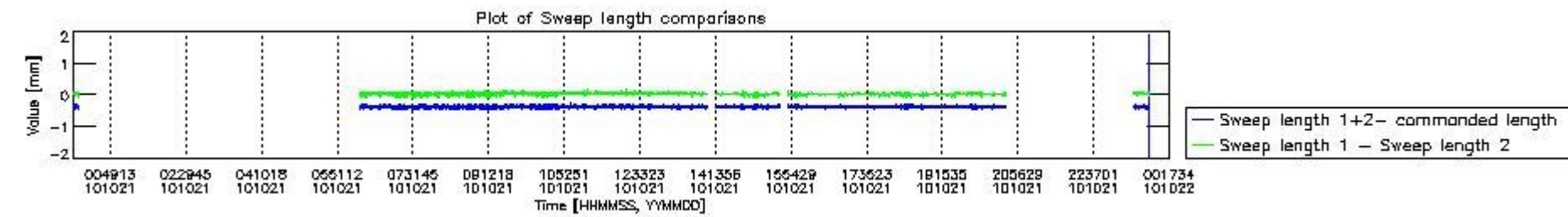
mipas\_daily\_report\_level0\_KSPT\_L0\_4504\_N\_20101021\_5.PNG



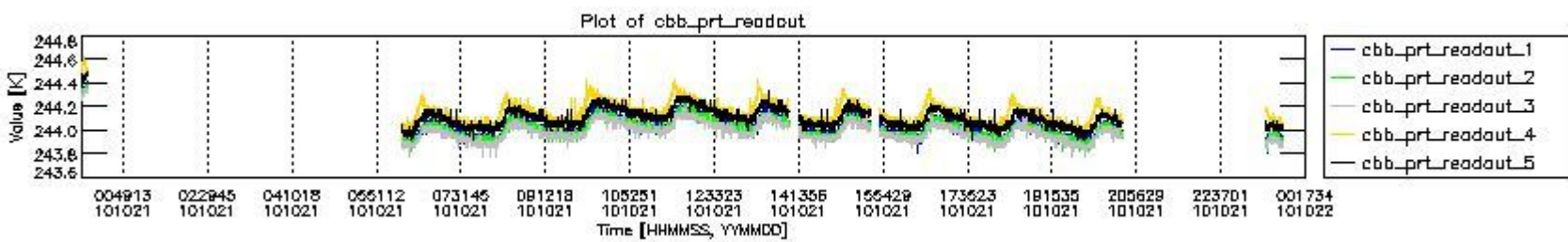
mipas\_daily\_report\_level0\_KSPT\_L0\_4504\_N\_20101021\_6.PNG



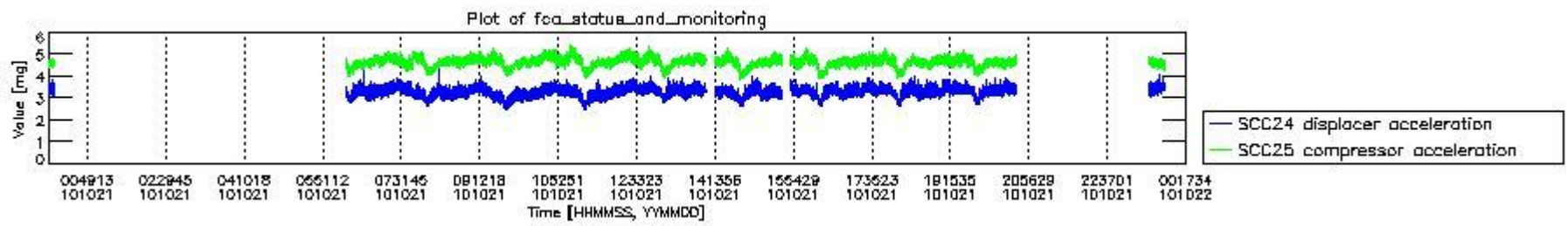
mipas\_daily\_report\_level0\_KSPT\_L0\_4504\_N\_20101021\_7.PNG



mipas\_daily\_report\_level0\_KSPT\_L0\_4504\_N\_20101021\_8.PNG



mipas\_daily\_report\_level0\_KSPT\_L0\_4504\_N\_20101021\_9.PNG

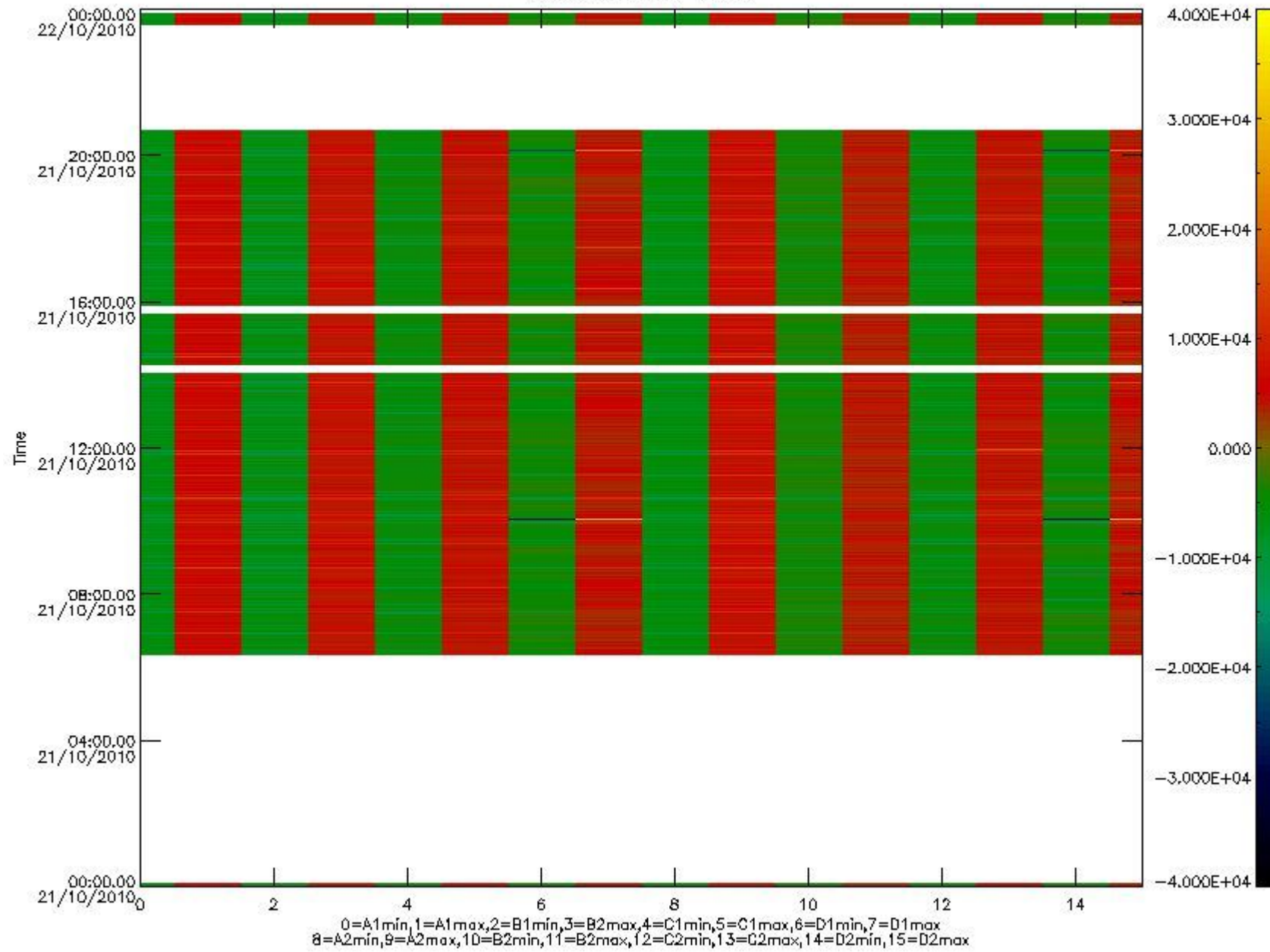


mipas\_daily\_report\_level0\_KSPT\_L0\_4504\_N\_20101021\_10.PNG

The following table shows channel statistics for all channels for this day.

Channel	Min	Max	ADC
A1	-18132	19069	16bit
B1	-17185	14855	16bit
C1	-24729	18305	16bit
D1	-32768	32767	16bit
A2	-15155	18451	16bit
B2	-13965	13764	16bit
C2	-18788	22088	16bit
D2	-32768	32767	16bit

MIPNLOP\_MIPSOUPAC\_aux\_fields\_igm\_cal, channel statistics plot  
Colour indicates value.



mipas\_daily\_report\_level0\_KSPT\_L0\_4504\_N\_20101021\_11.PNG

### 0.3 ADF monitoring

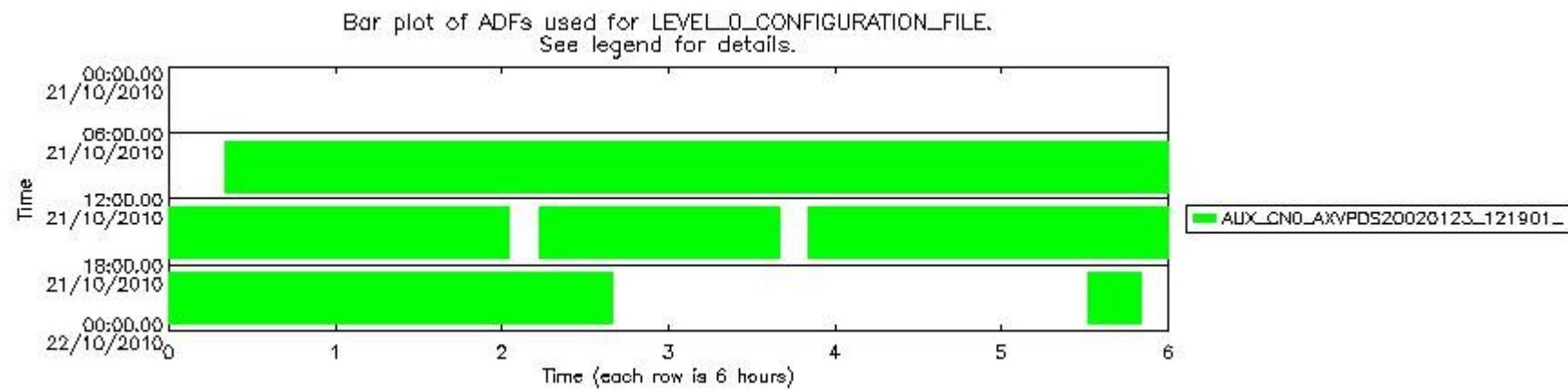
The use of ADFs is shown in two ways:

1. By means of two tables that can be used to find the ADF used for a specific product.
2. By means of plots that show changes in ADF using colours.

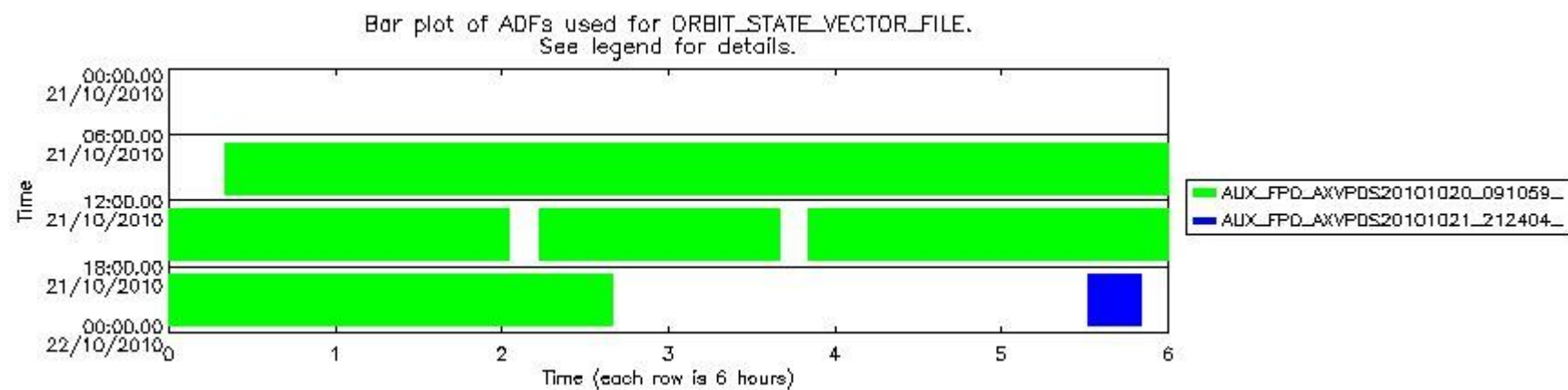
Number	ADF
0	AUX_CN0_AXVPDS20020123_121901_20020101_000000_20200101_000000
1	AUX_FPO_AXVPDS20101020_091059_20101019_194701_20101029_205125
2	AUX_FPO_AXVPDS20101021_212404_20101021_102047_20101030_183634

Number	Product name	#CN0	#FPO
--------	--------------	------	------

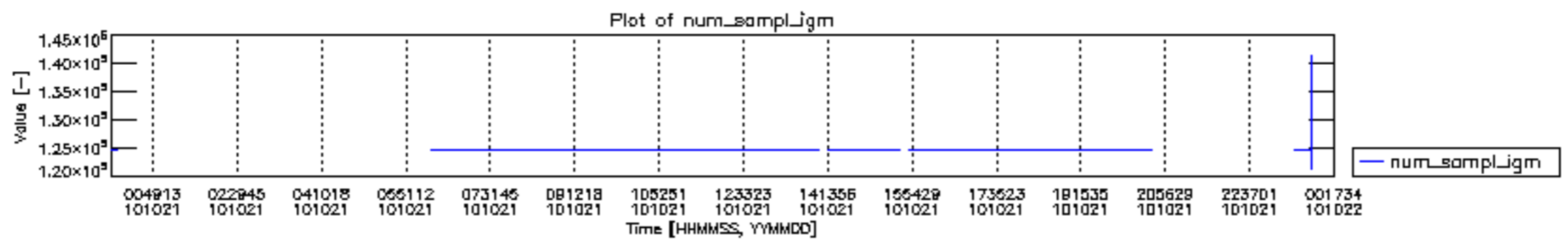
0	MIP_NL__0PNPDK20101021_062024_000040262094_00034_45178_3107.N1	0	1
1	MIP_NL__0PNPDK20101021_072632_000062592094_00035_45179_3108.N1	0	1
2	MIP_NL__0PNPDK20101021_090939_000059852094_00036_45180_3109.N1	0	1
3	MIP_NL__0PNPDK20101021_104746_000059662094_00037_45181_3110.N1	0	1
4	MIP_NL__0PNPDK20101021_122535_000057932094_00038_45182_3111.N1	0	1
5	MIP_NL__0PNPDK20101021_141327_000051852094_00039_45183_3112.N1	0	1
6	MIP_NL__0PNPDK20101021_155040_000055052094_00040_45184_3113.N1	0	1
7	MIP_NL__0PNPDK20101021_172141_000058992094_00041_45185_3114.N1	0	1
8	MIP_NL__0PNPDK20101021_185814_000060732094_00042_45186_3115.N1	0	1
9	MIP_NL__0PNPDK20101021_233055_000011562094_00044_45188_3116.N1	0	2

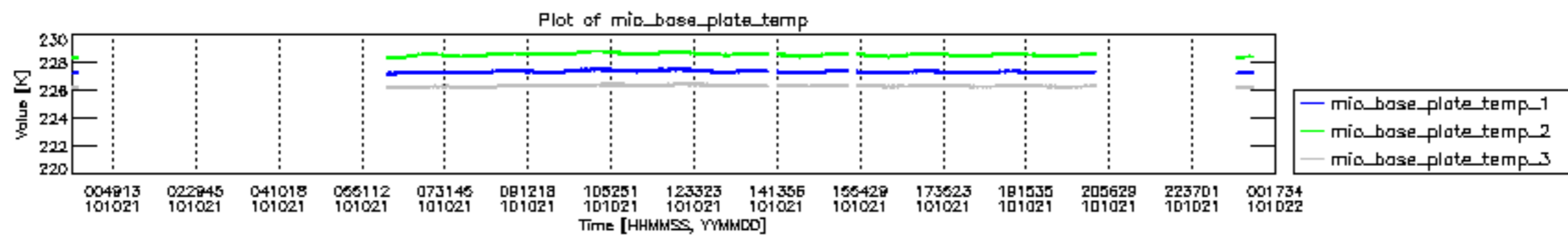


mipas\_daily\_report\_level0\_KSPT\_L0\_4504\_N\_20101021\_12.PNG

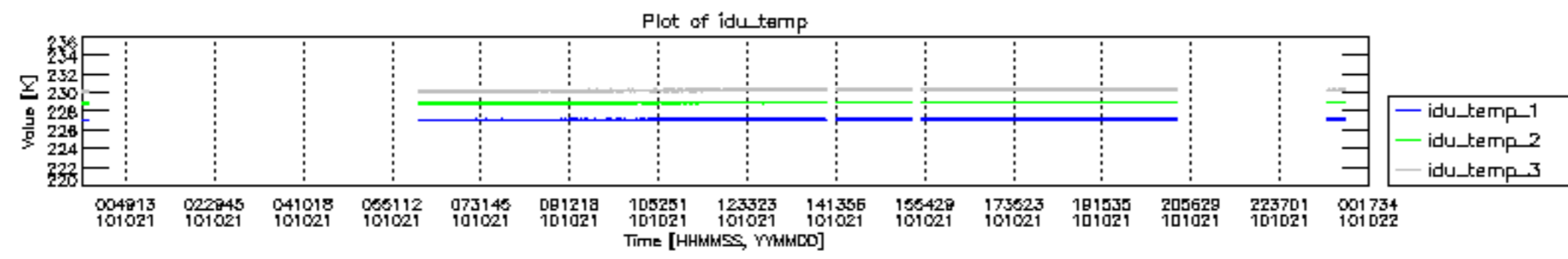


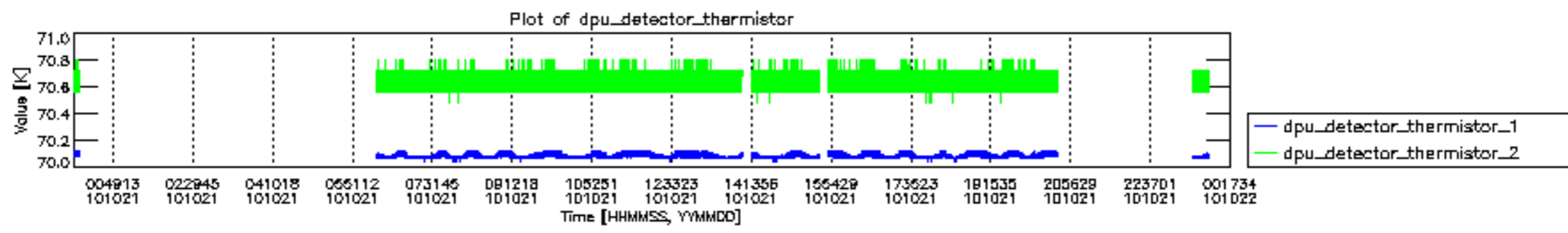
mipas\_daily\_report\_level0\_KSPT\_L0\_4504\_N\_20101021\_13.PNG

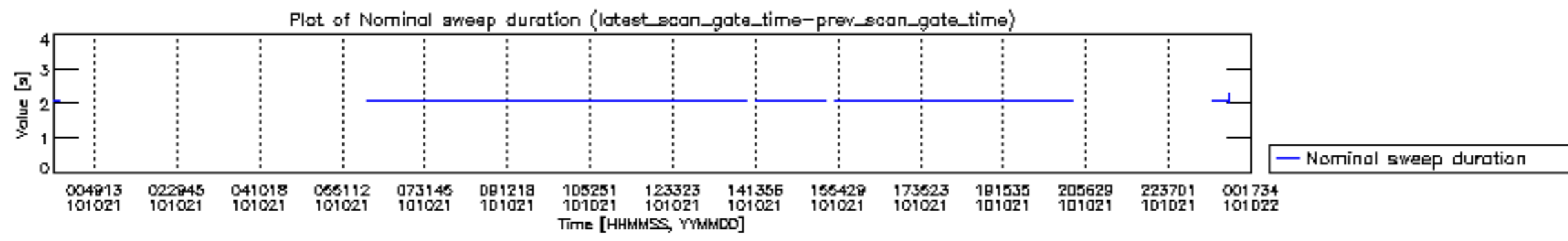


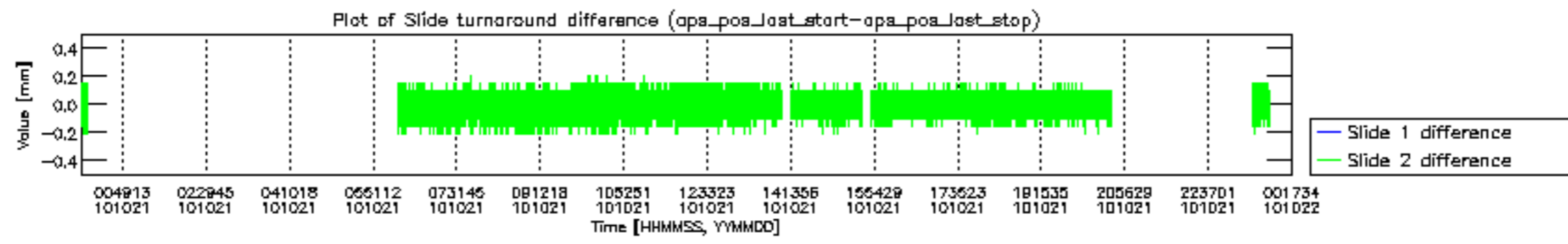


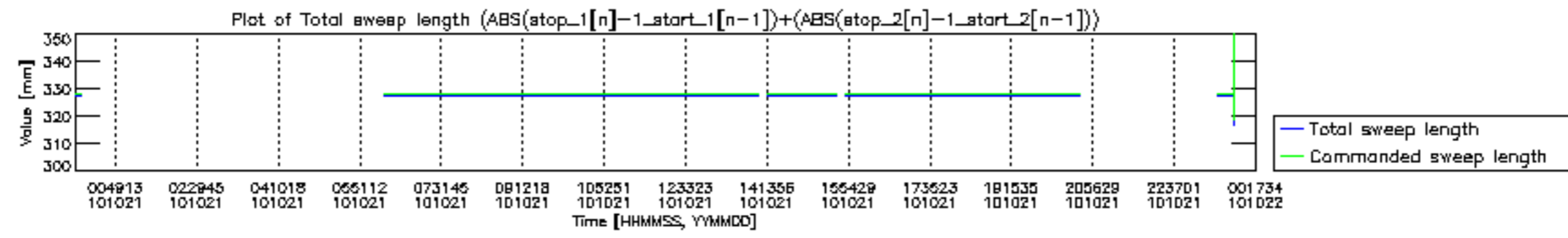


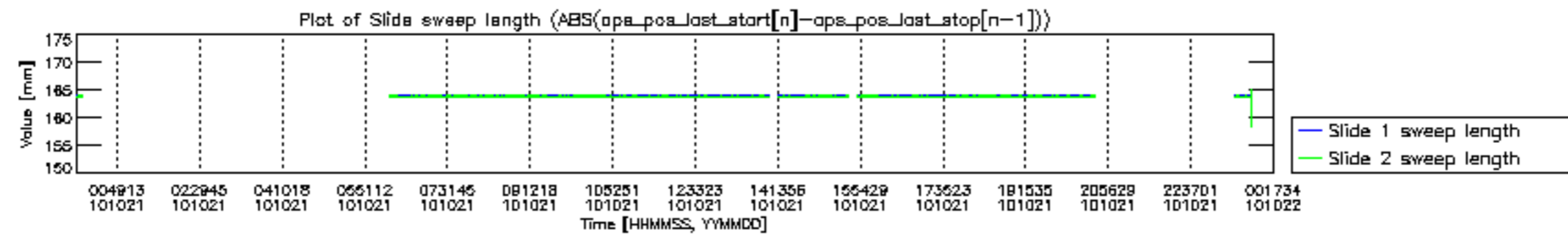


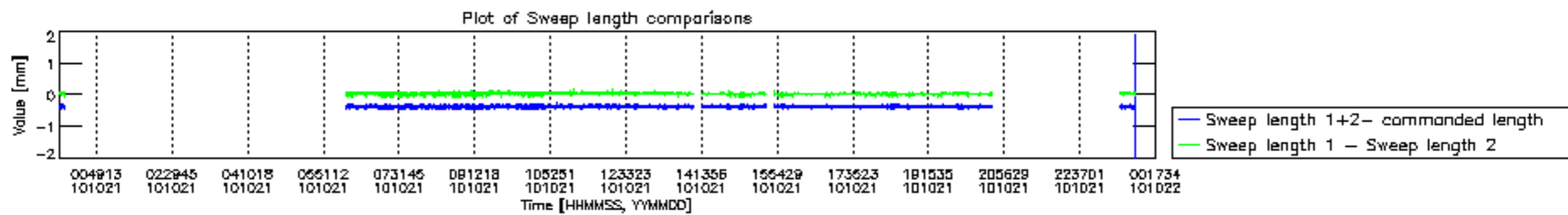


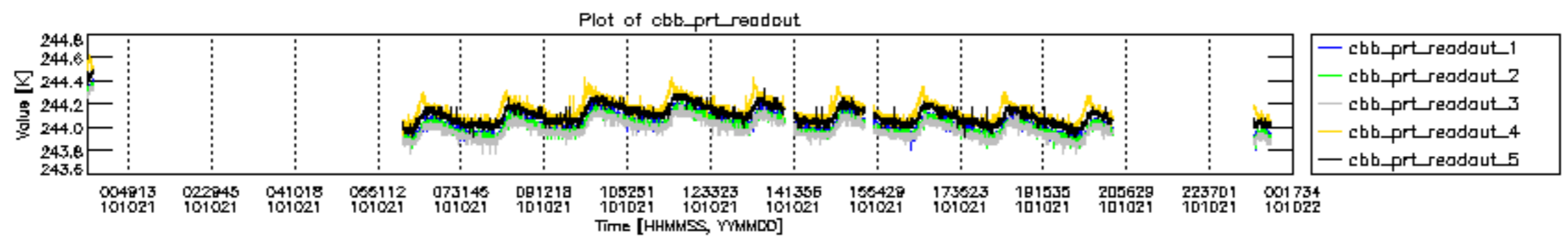




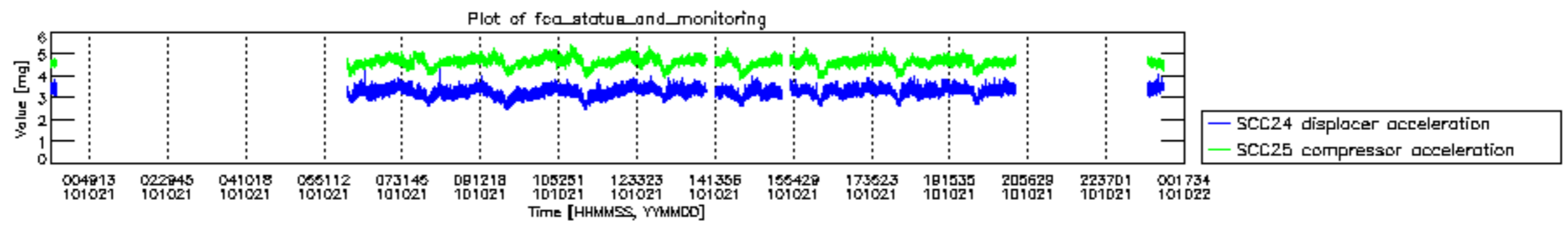












MIPNLOP\_MIPSOUPAC\_aux\_fields\_igm\_cal, channel statistics plot  
 Colour indicates value.

