

0. MIPAS Daily Report for level 0 products

[0.1 General Info](#)

[0.2 Instrument Operational Performance Parameters](#)

[0.3 ADF monitoring](#)

0.1 General Info

This report contains a daily analysis on parameters extracted from MIPAS level 0 data (The MIP_NL__0P product).

0.1.1 Report summary

The table below shows general characteristics of the data that are included into this report.

Item	Value
Report version	v1.5 2008-02-08
Time of report generation	25OCT2010 05:20:07
Data source version	KSPT_L0/4504-N
Processing scope for products	20OCT2010 00:00:00 to 21OCT2010 00:00:00
Start time of first product within scope	20OCT2010 10:00:14
Stop time of last product within scope	21OCT2010 00:06:53
Total number of level 0 products	9
Number of level 0 products with errors	0

0.1.2 Product Quality Indicators per product

The following table shows a summary for each product used in this report.

#	Product name	Start time	Stop time	Prod err	ISP err sign	ISP miss sign	ISP disc sign	rs sign
0	MIP_NL__0PNPDK20101020_100014_000047162094_00022_45166_3100.N1	20OCT2010 10:00:14	20OCT2010 11:18:51	0	0	0	0	0
1	MIP_NL__0PNPDK20101020_111750_000061632094_00023_45167_3101.N1	20OCT2010 11:17:50	20OCT2010 13:00:33	0	0	0	0	0
2	MIP_NL__0PNPDK20101020_125934_000059062094_00024_45168_3102.N1	20OCT2010 12:59:34	20OCT2010 14:38:00	0	0	0	0	0
3	MIP_NL__0PNPDK20101020_143620_000059162094_00025_45169_3103.N1	20OCT2010 14:36:20	20OCT2010 16:14:56	0	0	0	0	0
4	MIP_NL__0PNPDK20101020_161359_000059772094_00026_45170_3104.N1	20OCT2010 16:13:59	20OCT2010 17:53:36	0	0	0	0	0
5	MIP_NL__0PNPDK20101020_175254_000059372094_00027_45171_3105.N1	20OCT2010 17:52:54	20OCT2010 19:31:52	0	0	0	0	0
6	MIP_NL__0PNPDK20101020_193051_000062252094_00028_45172_3106.N1	20OCT2010 19:30:51	20OCT2010 21:14:36	0	0	0	0	0
7	MIP_NL__0PNPDE20101020_211338_000042602094_00029_45173_1735.N1	20OCT2010 21:13:38	20OCT2010 22:24:37	0	0	0	0	0
8	MIP_NL__0PNPDE20101020_222331_000062022094_00029_45173_1736.N1	20OCT2010 22:23:31	21OCT2010 00:06:53	0	0	0	0	0

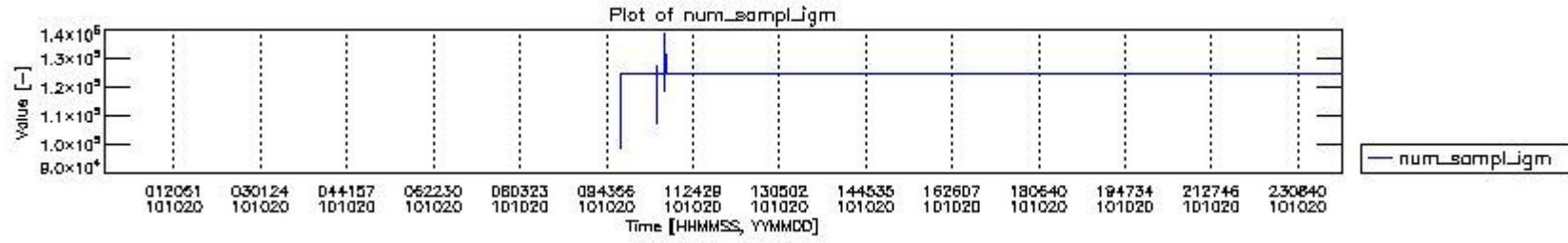
0.2 Instrument Operational Performance Parameters

The following plots give an overview of various instrument parameters for this day. The instrument parameters are part of the auxiliary data field within the source packets of the MIP_NL__0P product. The auxiliary data is normally included twice per interferogram. Note that only the first packet is currently included in monitoring.

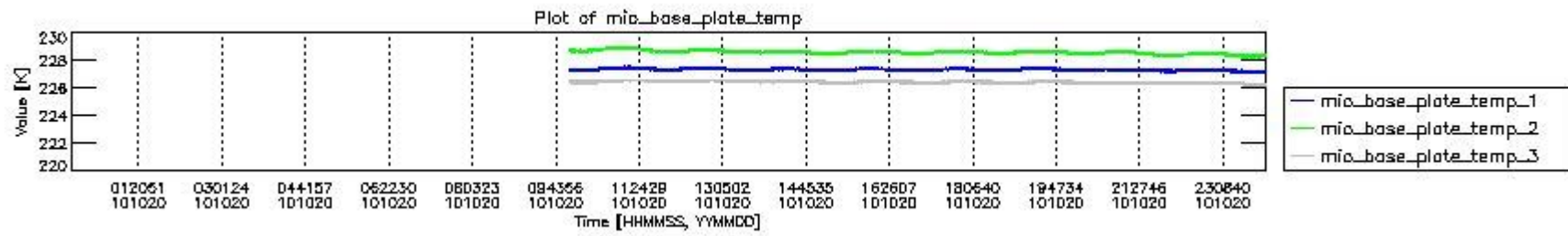
The following table shows the counts of various interferogram number of samples

Number of igm samples	Count [#]	Count [%]
98996	1	0.0041175986
107161	1	0.0041175986
109654	1	0.0041175986
118684	1	0.0041175986
123696	1	0.0041175986
124248	1	0.0041175986
124800	22562	92.901260
124803	1715	7.0616816
127293	1	0.0041175986

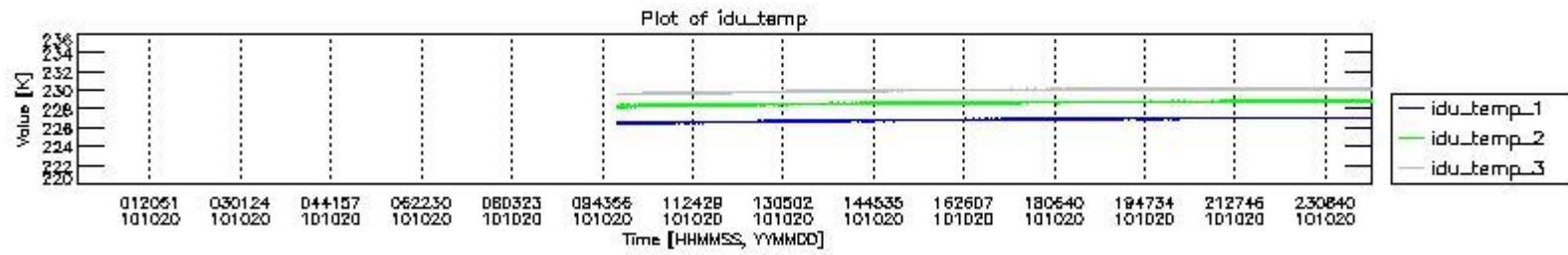
132700	1	0.0041175986
138816	1	0.0041175986



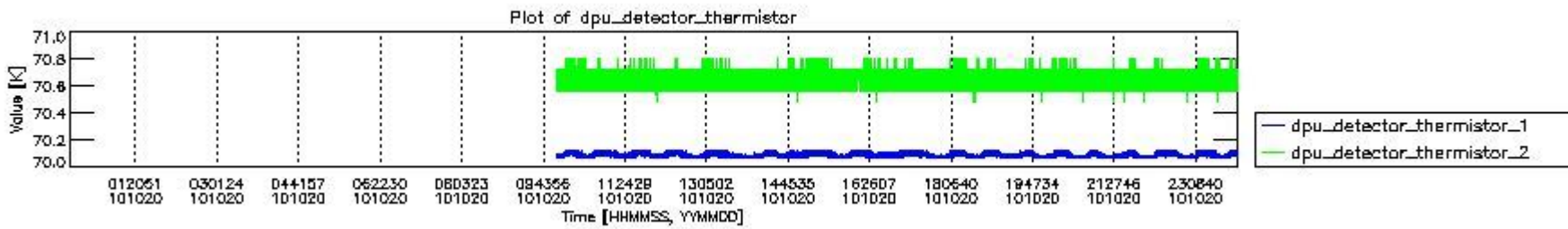
mipas_daily_report_level0_KSPT_L0_4504_N_20101020_0.PNG



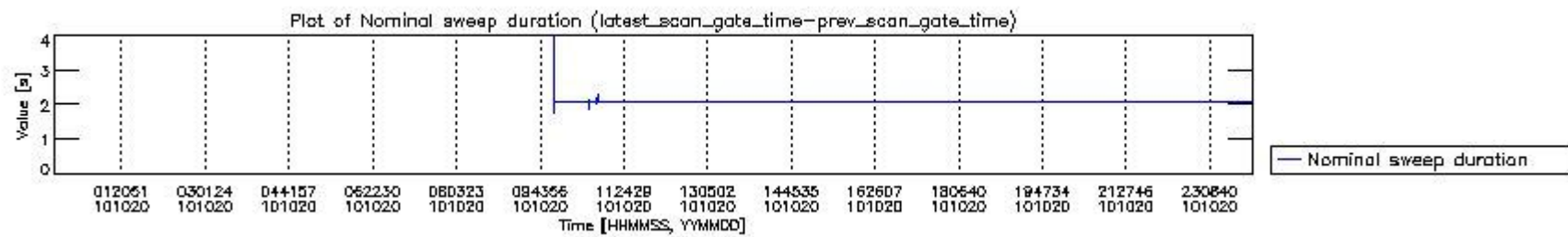
mipas_daily_report_level0_KSPT_L0_4504_N_20101020_1.PNG



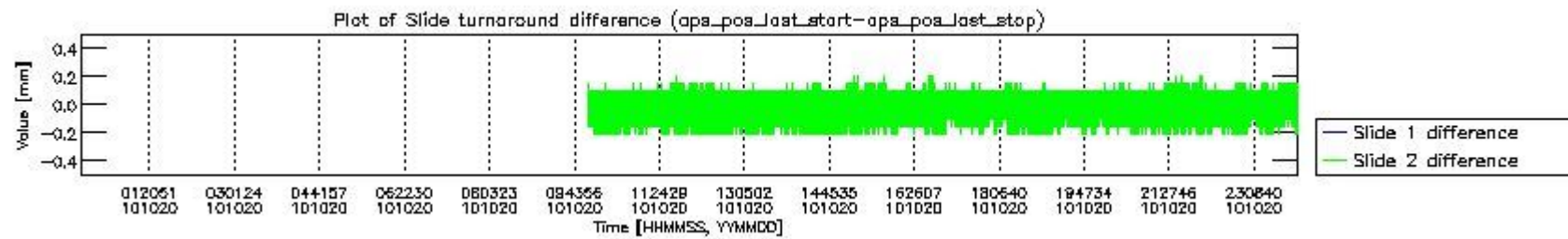
mipas_daily_report_level0_KSPT_L0_4504_N_20101020_2.PNG



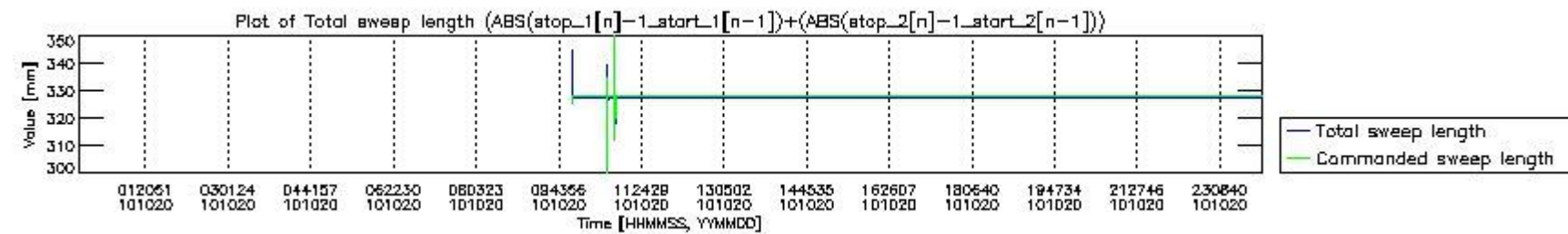
mipas_daily_report_level0_KSPT_L0_4504_N_20101020_3.PNG



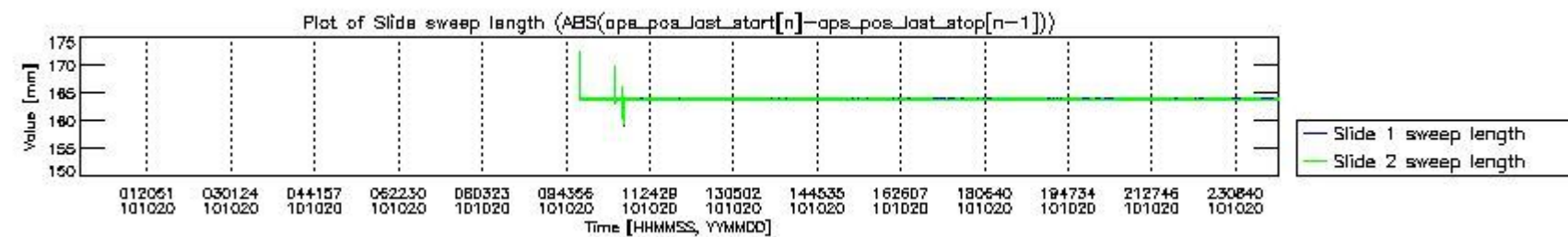
mipas_daily_report_level0_KSPT_L0_4504_N_20101020_4.PNG



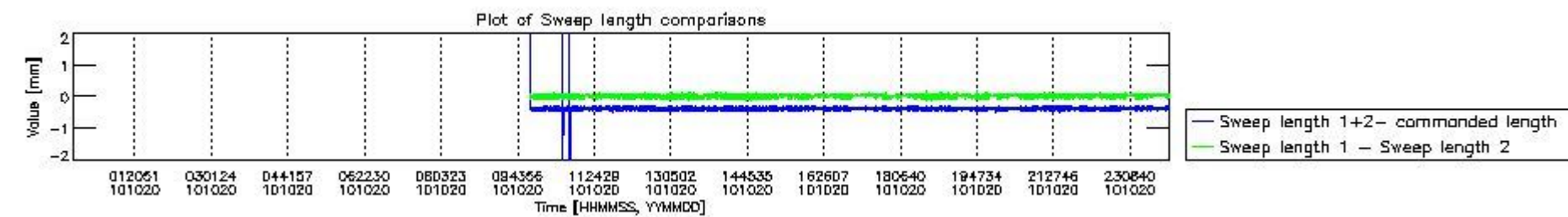
mipas_daily_report_level0_KSPT_L0_4504_N_20101020_5.PNG



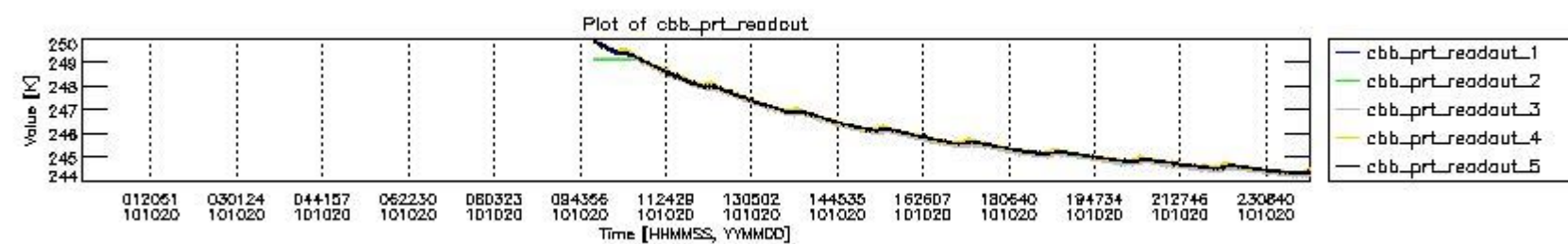
mipas_daily_report_level0_KSPT_L0_4504_N_20101020_6.PNG



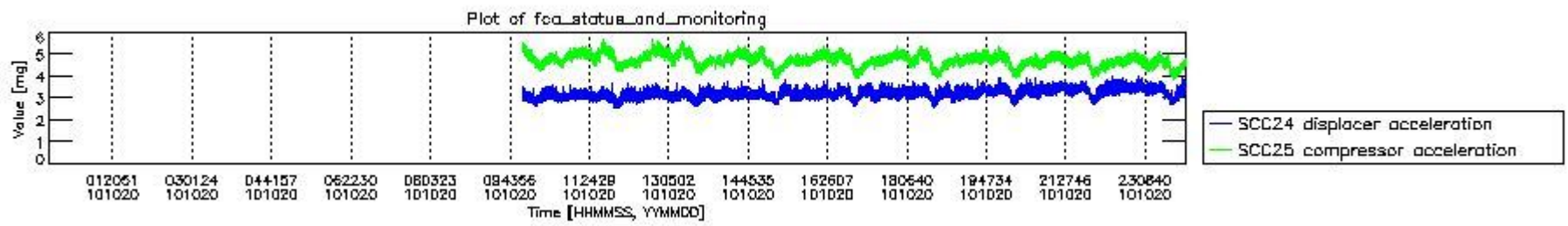
mipas_daily_report_level0_KSPT_L0_4504_N_20101020_7.PNG



mipas_daily_report_level0_KSPT_L0_4504_N_20101020_8.PNG



mipas_daily_report_level0_KSPT_L0_4504_N_20101020_9.PNG

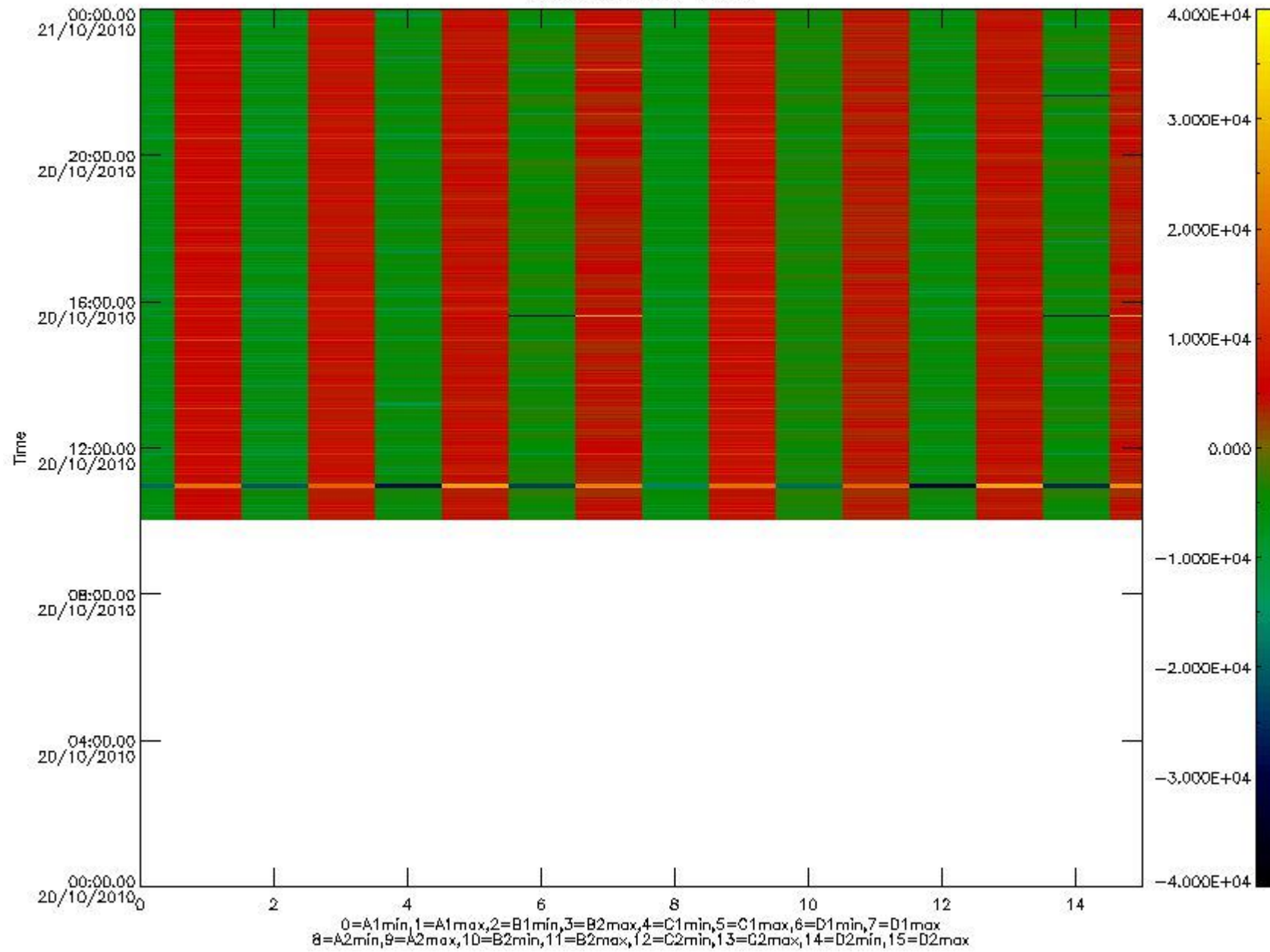


mipas_daily_report_level0_KSPT_L0_4504_N_20101020_10.PNG

The following table shows channel statistics for all channels for this day.

Channel	Min	Max	ADC
A1	-19737	21307	16bit
B1	-22200	19067	16bit
C1	-28846	28652	16bit
D1	-32768	32767	16bit
A2	-16876	21310	16bit
B2	-20057	19639	16bit
C2	-30041	29569	16bit
D2	-32768	32767	16bit

MIPNLOP_MIPSOUPAC_aux_fields_igm_cal, channel statistics plot
Colour indicates value.



mipas_daily_report_level0_KSPT_L0_4504_N_20101020_11.PNG

0.3 ADF monitoring

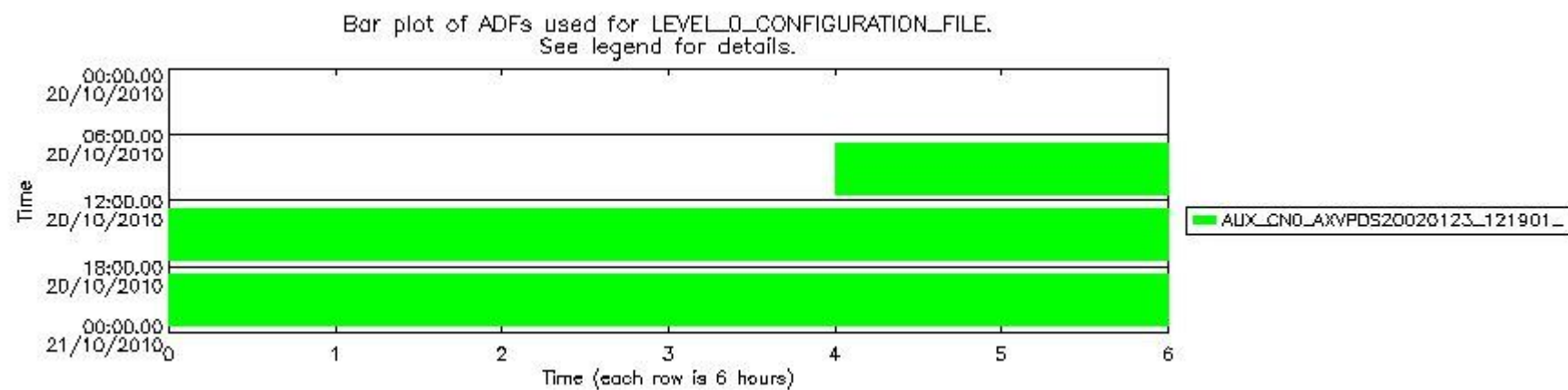
The use of ADFs is shown in two ways:

1. By means of two tables that can be used to find the ADF used for a specific product.
2. By means of plots that show changes in ADF using colours.

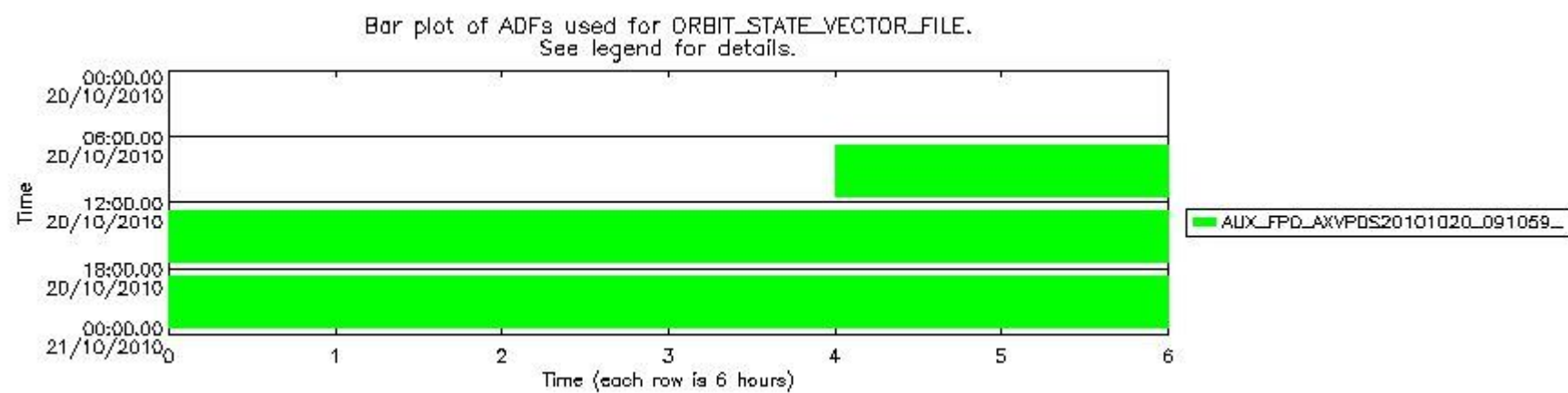
Number	ADF
0	AUX_CN0_AXVPDS20020123_121901_20020101_000000_20200101_000000
1	AUX_FPO_AXVPDS20101020_091059_20101019_194701_20101029_205125

Number	Product name	#CN0	#FPO
0	MIP_NL_0PNPDK20101020_100014_000047162094_00022_45166_3100.N1	0	1

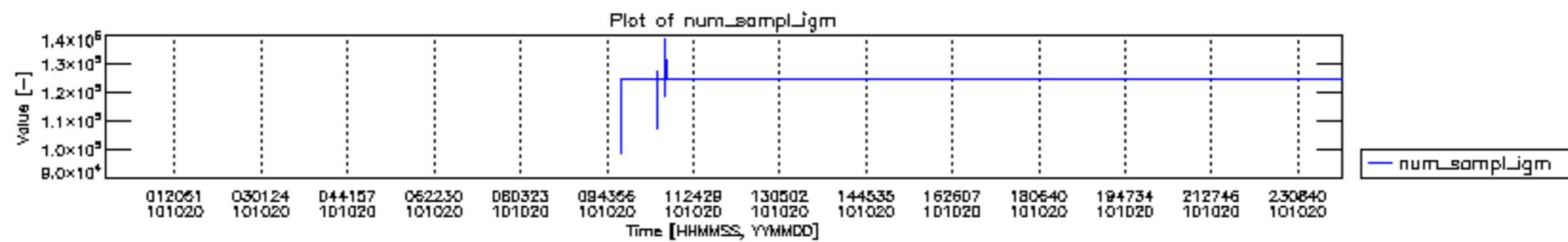
1	MIP_NL__0PNPDK20101020_111750_000061632094_00023_45167_3101.N1	0	1
2	MIP_NL__0PNPDK20101020_125934_000059062094_00024_45168_3102.N1	0	1
3	MIP_NL__0PNPDK20101020_143620_000059162094_00025_45169_3103.N1	0	1
4	MIP_NL__0PNPDK20101020_161359_000059772094_00026_45170_3104.N1	0	1
5	MIP_NL__0PNPDK20101020_175254_000059372094_00027_45171_3105.N1	0	1
6	MIP_NL__0PNPDK20101020_193051_000062252094_00028_45172_3106.N1	0	1
7	MIP_NL__0PNPDE20101020_211338_000042602094_00029_45173_1735.N1	0	1
8	MIP_NL__0PNPDE20101020_222331_000062022094_00029_45173_1736.N1	0	1

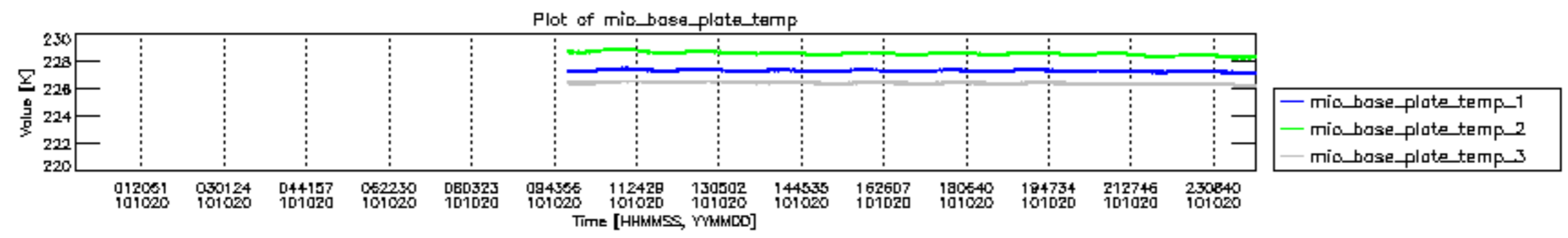


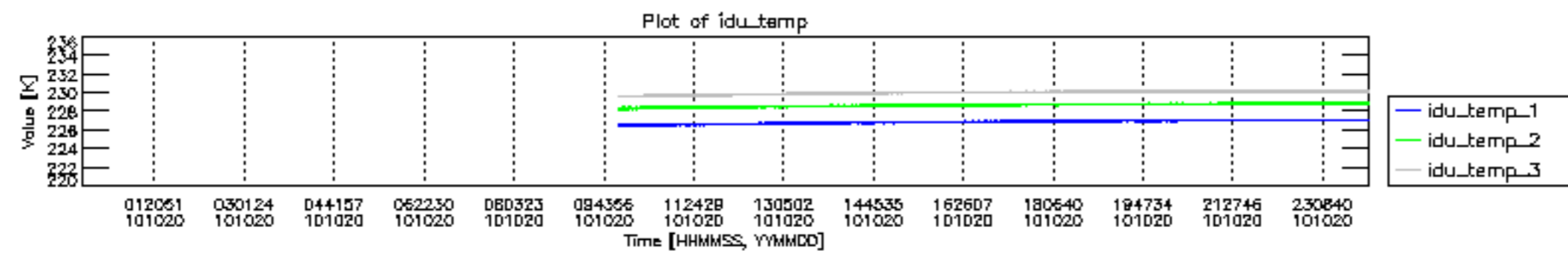
mipas_daily_report_level0_KSPT_L0_4504_N_20101020_12.PNG

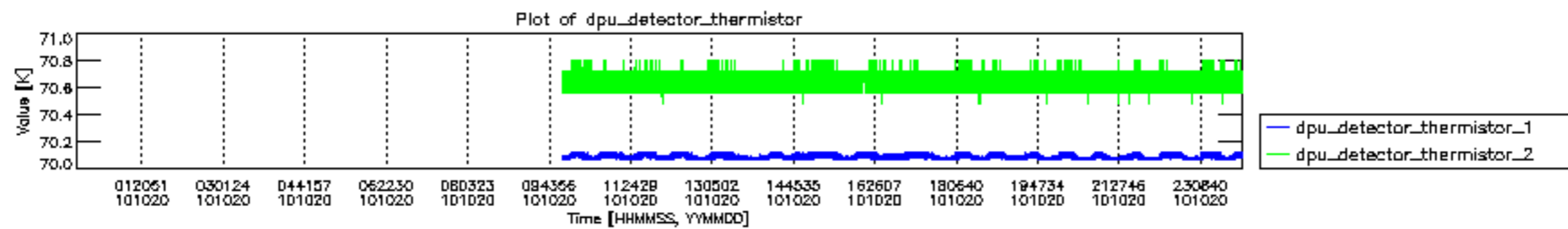


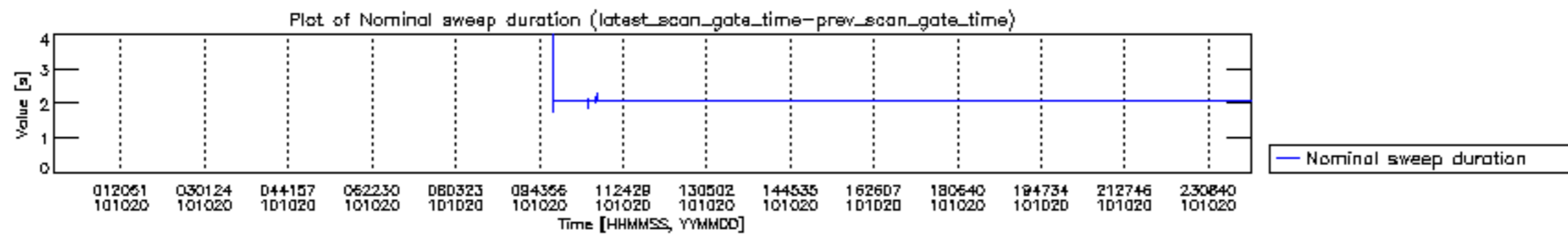
mipas_daily_report_level0_KSPT_L0_4504_N_20101020_13.PNG

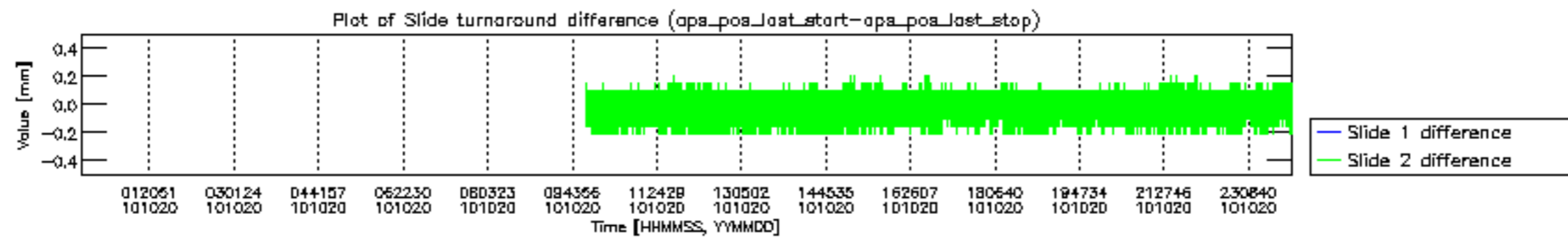


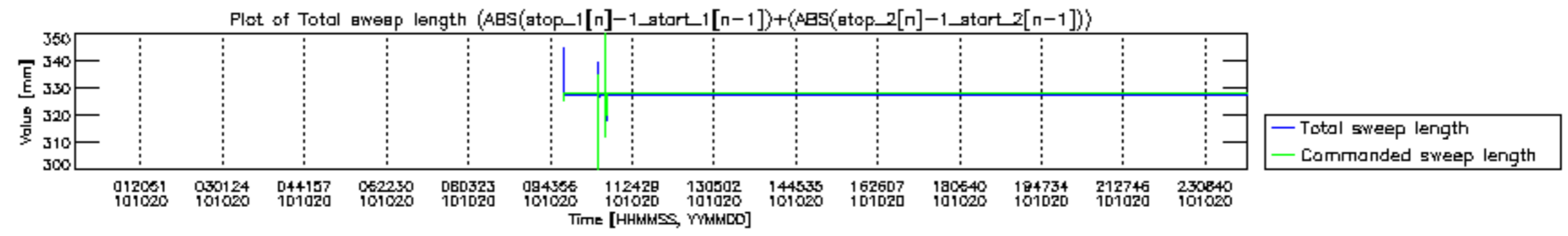


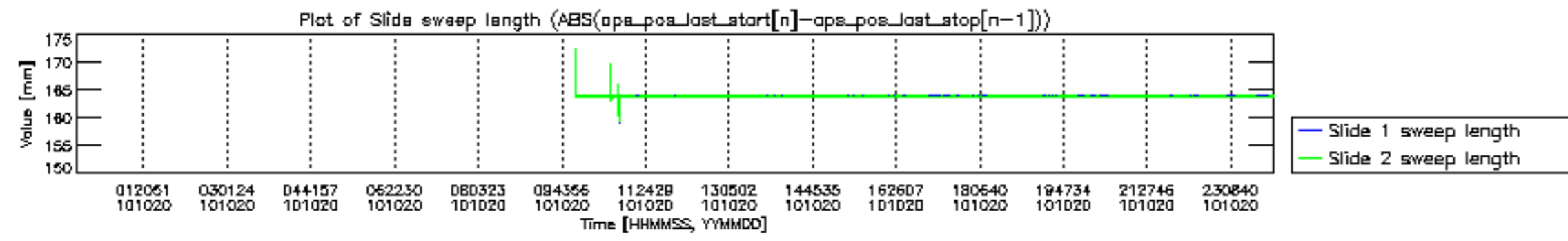


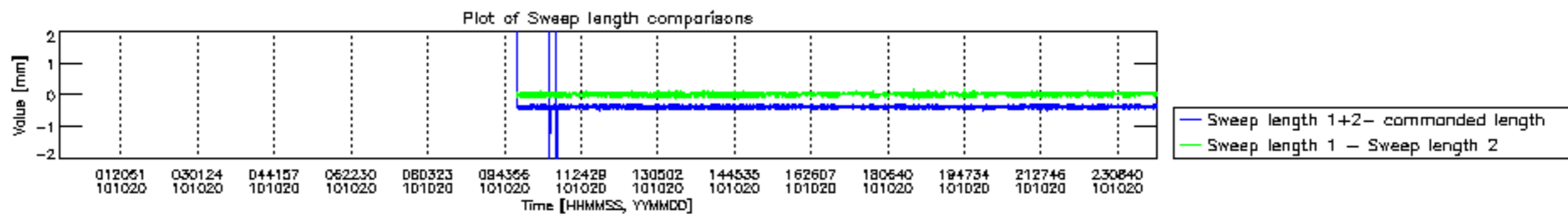


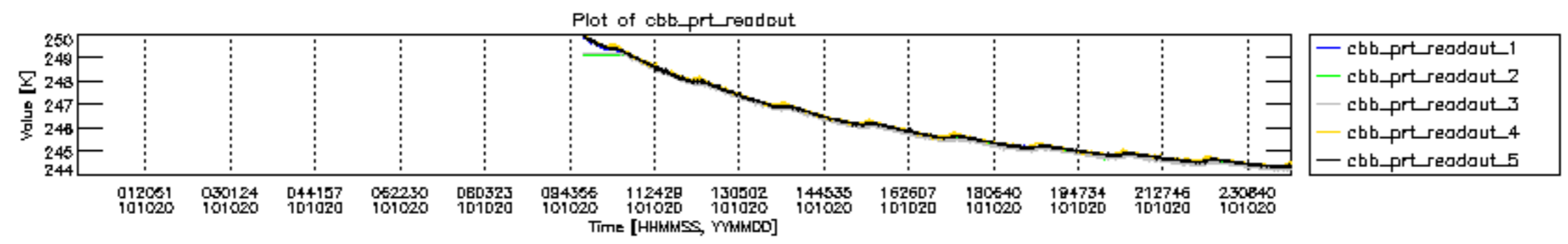


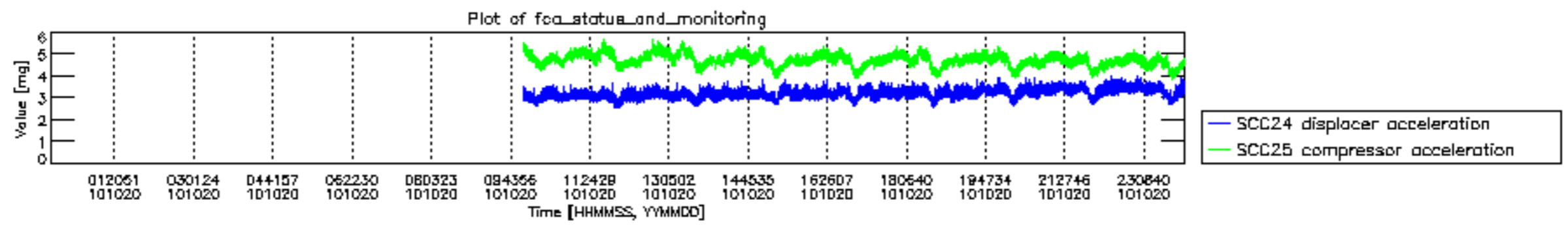












MIPNLOP_MIPSOUPAC_aux_fields_igm_cal, channel statistics plot
 Colour indicates value.

