

## 0. MIPAS Daily Report for level 0 products

### [0.1 General Info](#)

### [0.2 Instrument Operational Performance Parameters](#)

### [0.3 ADF monitoring](#)

## 0.1 General Info

This report contains a daily analysis on parameters extracted from MIPAS level 0 data (The MIP\_NL\_\_0P product).

### 0.1.1 Report summary

The table below shows general characteristics of the data that are included into this report.

Item	Value
Report version	v1.5 2008-02-08
Time of report generation	17OCT2010 05:20:12
Data source version	<any version>
Processing scope for products	12OCT2010 00:00:00 to 13OCT2010 00:00:00
Start time of first product within scope	12OCT2010 00:07:41
Stop time of last product within scope	13OCT2010 00:57:52
Total number of level 0 products	11
Number of level 0 products with errors	0

### 0.1.2 Product Quality Indicators per product

The following table shows a summary for each product used in this report.

#	Product name	Start time	Stop time	Prod err	ISP err sign	ISP miss sign	ISP disc sign	rs sign
0	MIP_NL__0PNPDE20101012_000741_000015942093_00403_45046_3015.N1	12OCT2010 00:07:41	12OCT2010 00:34:15	0	0	0	0	0
1	MIP_NL__0PNPDK20101012_085544_000058342093_00408_45051_3092.N1	12OCT2010 08:55:44	12OCT2010 10:32:59	0	0	0	0	0
2	MIP_NL__0PNPDK20101012_103131_000059292093_00409_45052_3093.N1	12OCT2010 10:31:31	12OCT2010 12:10:20	0	0	0	0	0
3	MIP_NL__0PNPDK20101012_120923_000060332093_00410_45053_3094.N1	12OCT2010 12:09:23	12OCT2010 13:49:57	0	0	0	0	0
4	MIP_NL__0PNPDK20101012_134858_000059122093_00411_45054_3095.N1	12OCT2010 13:48:58	12OCT2010 15:27:30	0	0	0	0	0
5	MIP_NL__0PNPDK20101012_152617_000059832093_00412_45055_3096.N1	12OCT2010 15:26:17	12OCT2010 17:06:00	0	0	0	0	0
6	MIP_NL__0PNPDK20101012_170449_000060042093_00413_45056_3097.N1	12OCT2010 17:04:49	12OCT2010 18:44:53	0	0	0	0	0
7	MIP_NL__0PNPDK20101012_184405_000060732093_00414_45057_3098.N1	12OCT2010 18:44:05	12OCT2010 20:25:18	0	0	0	0	0
8	MIP_NL__0PNPDE20101012_202445_000042012093_00415_45058_1727.N1	12OCT2010 20:24:45	12OCT2010 21:34:46	0	0	0	0	0
9	MIP_NL__0PNPDE20101012_213339_000062482093_00415_45058_1728.N1	12OCT2010 21:33:39	12OCT2010 23:17:48	0	0	0	0	0
10	MIP_NL__0PNPDE20101012_231643_000060692093_00416_45059_1729.N1	12OCT2010 23:16:43	13OCT2010 00:57:52	0	0	0	0	0

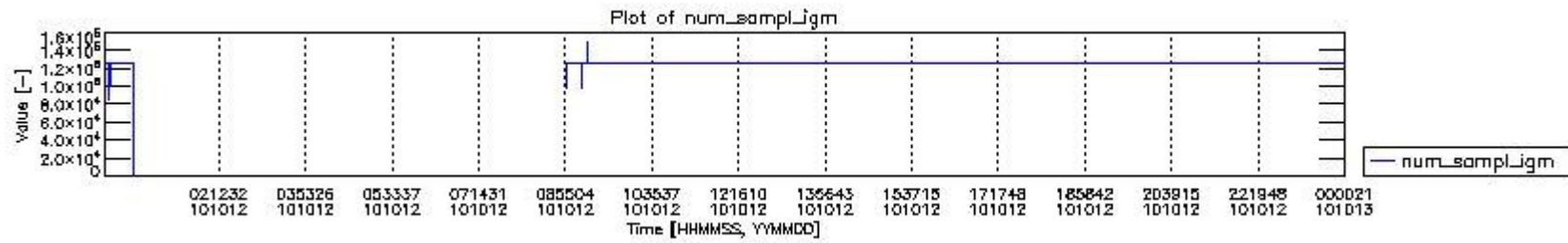
## 0.2 Instrument Operational Performance Parameters

The following plots give an overview of various instrument parameters for this day. The instrument parameters are part of the auxiliary data field within the source packets of the MIP\_NL\_\_0P product. The auxiliary data is normally included twice per interferogram. Note that only the first packet is currently included in monitoring.

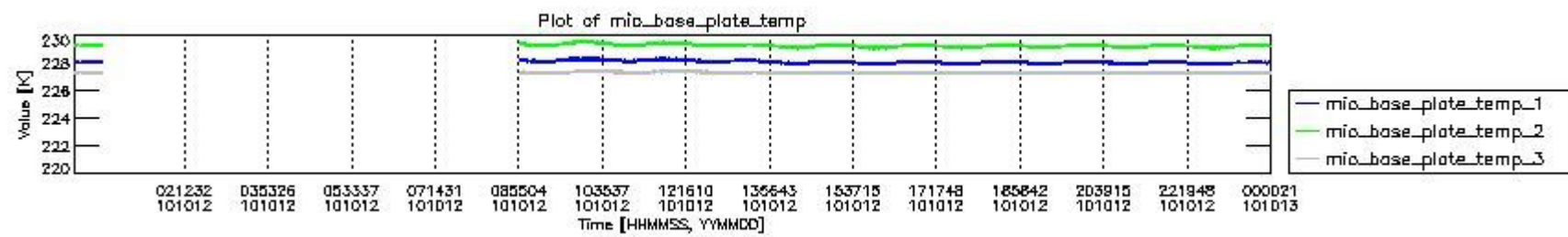
The following table shows the counts of various interferogram number of samples

Number of igm samples	Count [#]	Count [%]
88	1	0.0037010992
86162	1	0.0037010992
95415	1	0.0037010992
97462	1	0.0037010992
99145	1	0.0037010992
100557	1	0.0037010992
101065	1	0.0037010992

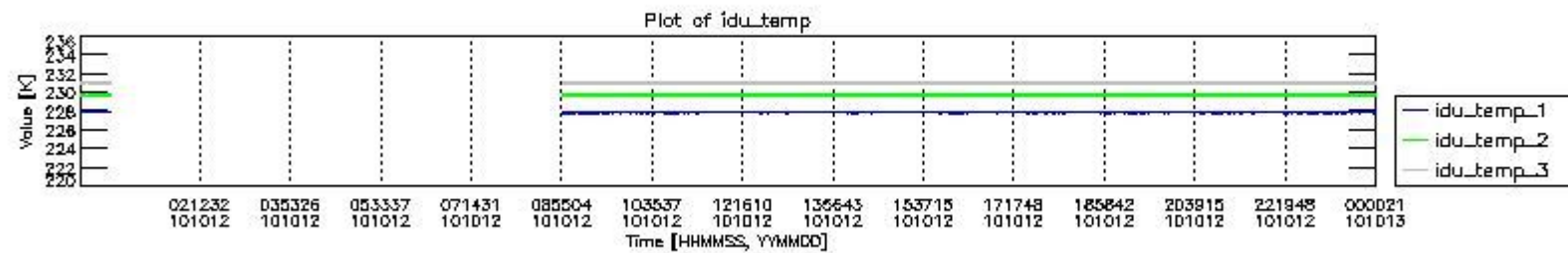
11547	1	0.0037010992
121197	1	0.0037010992
123994	1	0.0037010992
124397	1	0.0037010992
124800	25096	92.882786
124803	1907	7.0579962
125809	1	0.0037010992
126818	1	0.0037010992
127233	1	0.0037010992
147365	1	0.0037010992
149798	1	0.0037010992



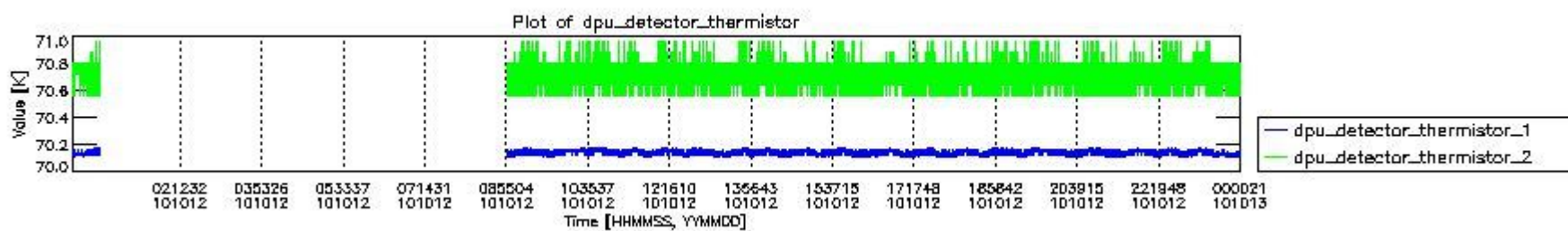
mipas\_daily\_report\_level0\_any\_version\_20101012\_0.PNG



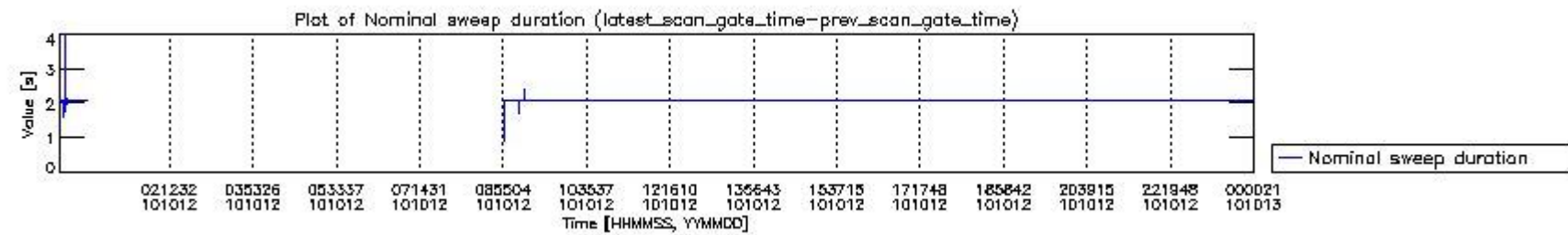
mipas\_daily\_report\_level0\_any\_version\_20101012\_1.PNG



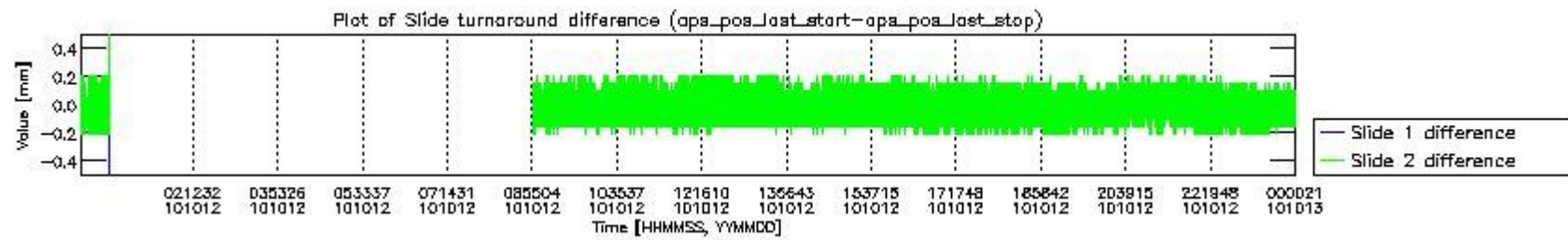
mipas\_daily\_report\_level0\_any\_version\_20101012\_2.PNG



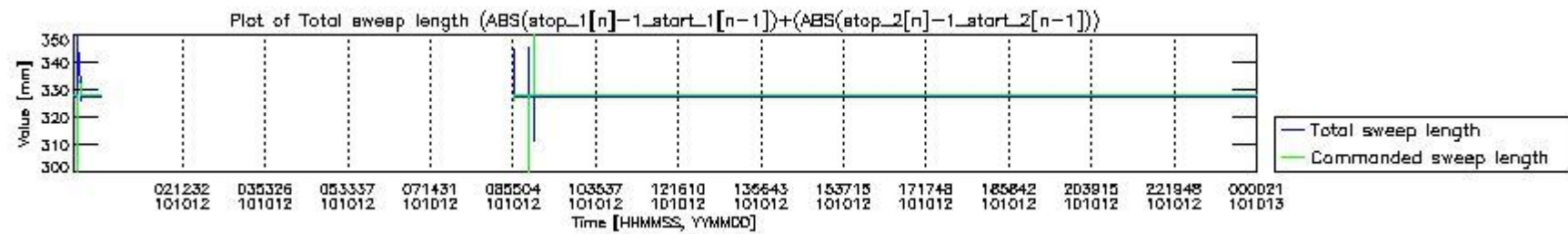
mipas\_daily\_report\_level0\_any\_version\_20101012\_3.PNG



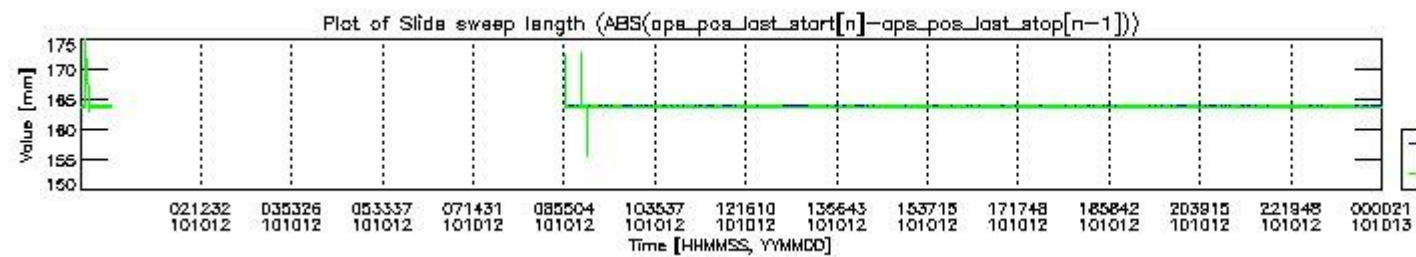
mipas\_daily\_report\_level0\_any\_version\_20101012\_4.PNG



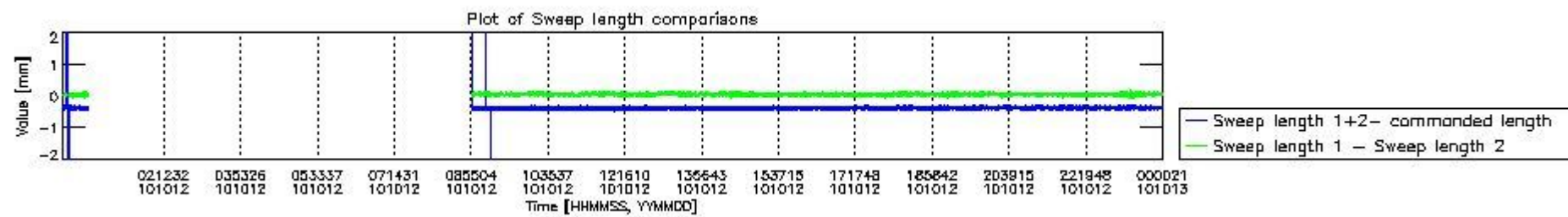
mipas\_daily\_report\_level0\_any\_version\_20101012\_5.PNG



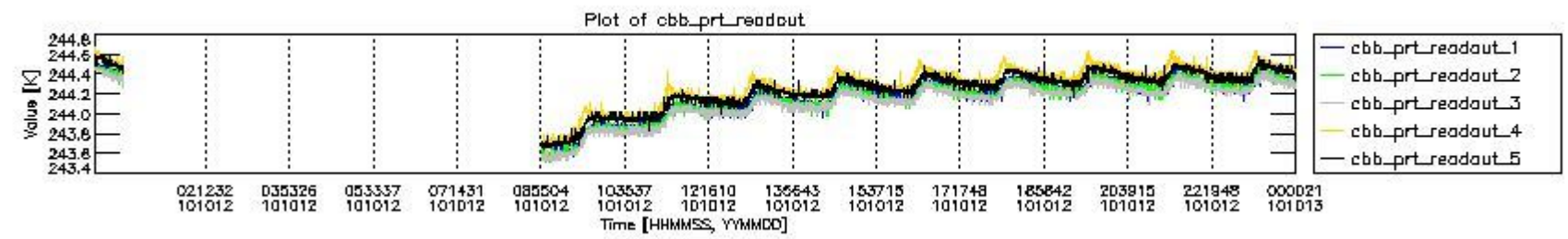
mipas\_daily\_report\_level0\_any\_version\_20101012\_6.PNG



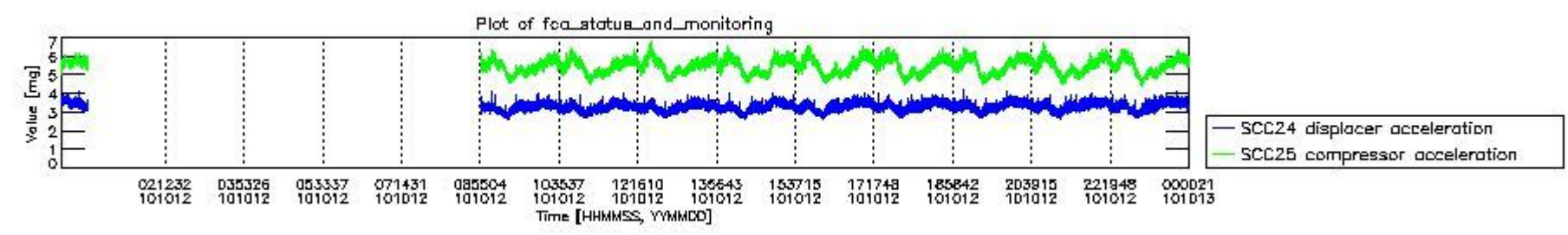
mipas\_daily\_report\_level0\_any\_version\_20101012\_7.PNG



mipas\_daily\_report\_level0\_any\_version\_20101012\_8.PNG



mipas\_daily\_report\_level0\_any\_version\_20101012\_9.PNG

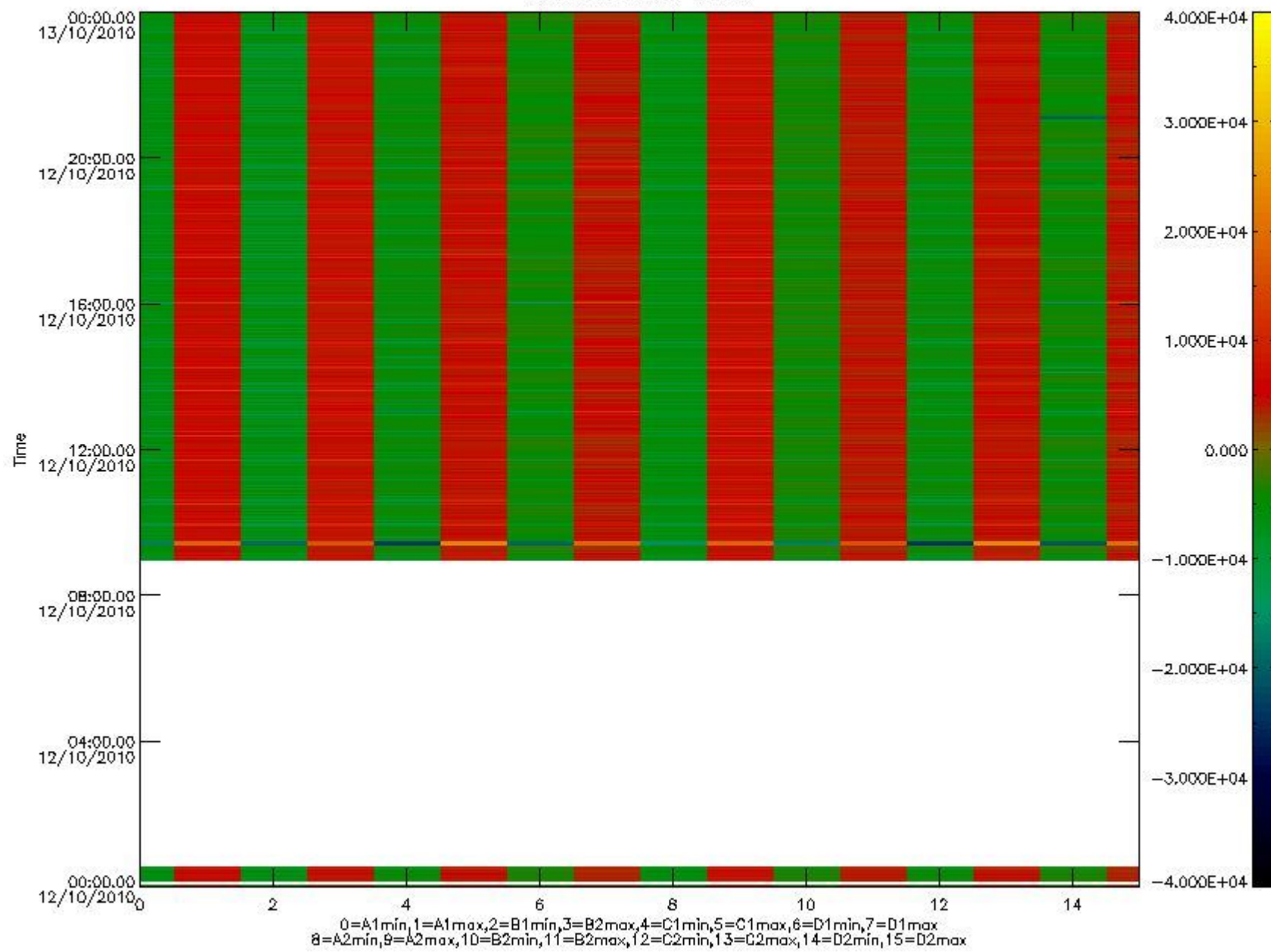


mipas\_daily\_report\_level0\_any\_version\_20101012\_10.PNG

The following table shows channel statistics for all channels for this day.

Channel	Min	Max	ADC
A1	-17788	18869	16bit
B1	-20075	17343	16bit
C1	-23919	23933	16bit
D1	-32768	32767	16bit
A2	-15503	19122	16bit
B2	-17824	17592	16bit
C2	-24826	24573	16bit
D2	-32768	32767	16bit

MIPNLOP\_MIPSOUPAC\_aux\_fields\_igm\_cal, channel statistics plot  
Colour indicates value.



mipas\_daily\_report\_level0\_any\_version\_20101012\_11.PNG

### 0.3 ADF monitoring

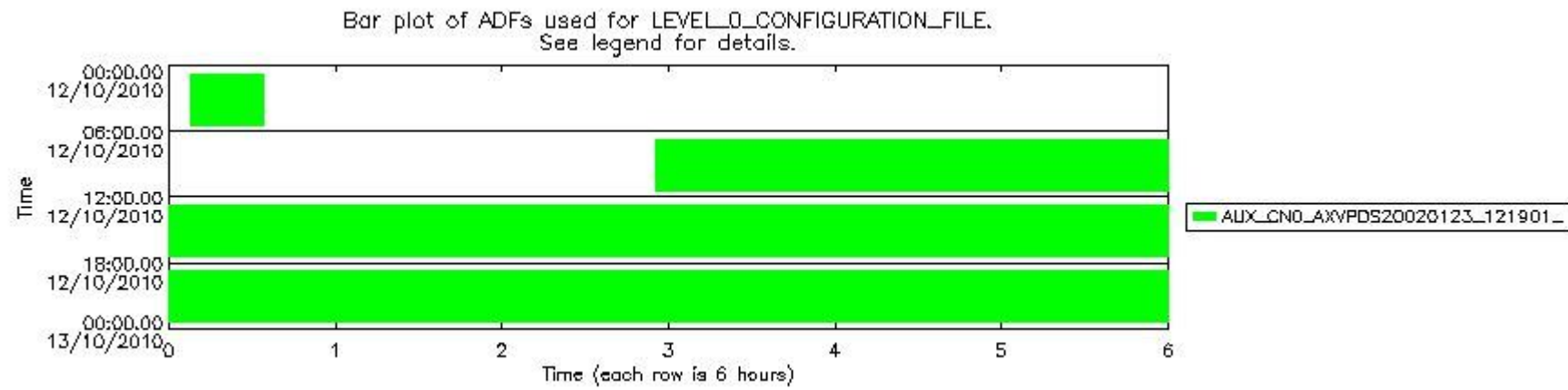
The use of ADFs is shown in two ways:

1. By means of two tables that can be used to find the ADF used for a specific product.
2. By means of plots that show changes in ADF using colours.

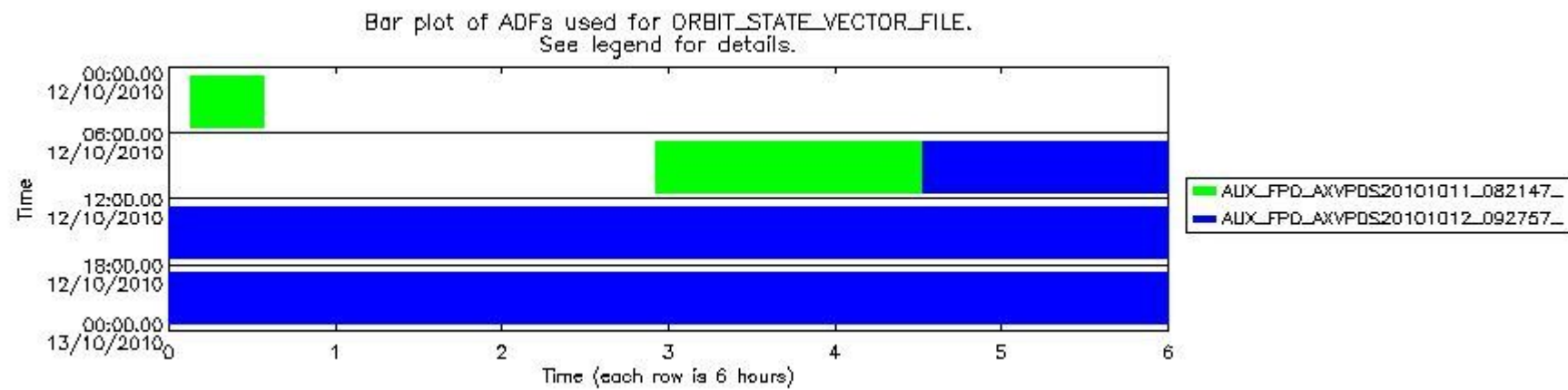
Number	ADF
0	AUX_CN0_AXVPDS20020123_121901_20020101_000000_20200101_000000
1	AUX_FPO_AXVPDS20101011_082147_20101010_192949_20101020_205600
2	AUX_FPO_AXVPDS20101012_092757_20101011_185812_20101021_202422

Number	Product name	#CN0	#FPO
--------	--------------	------	------

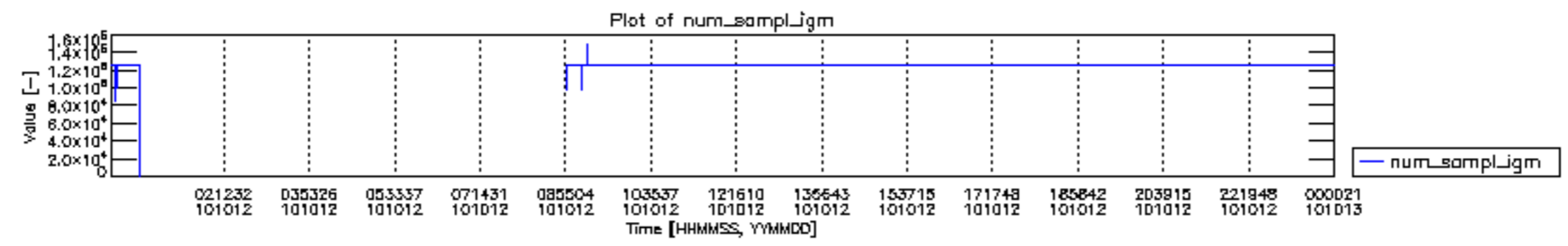
0	MIP_NL__0PNPDE20101012_000741_000015942093_00403_45046_3015.N1	0	1
1	MIP_NL__0PNPDK20101012_085544_000058342093_00408_45051_3092.N1	0	1
2	MIP_NL__0PNPDK20101012_103131_000059292093_00409_45052_3093.N1	0	2
3	MIP_NL__0PNPDK20101012_120923_000060332093_00410_45053_3094.N1	0	2
4	MIP_NL__0PNPDK20101012_134858_000059122093_00411_45054_3095.N1	0	2
5	MIP_NL__0PNPDK20101012_152617_000059832093_00412_45055_3096.N1	0	2
6	MIP_NL__0PNPDK20101012_170449_000060042093_00413_45056_3097.N1	0	2
7	MIP_NL__0PNPDK20101012_184405_000060732093_00414_45057_3098.N1	0	2
8	MIP_NL__0PNPDE20101012_202445_000042012093_00415_45058_1727.N1	0	2
9	MIP_NL__0PNPDE20101012_213339_000062482093_00415_45058_1728.N1	0	2
10	MIP_NL__0PNPDE20101012_231643_000060692093_00416_45059_1729.N1	0	2

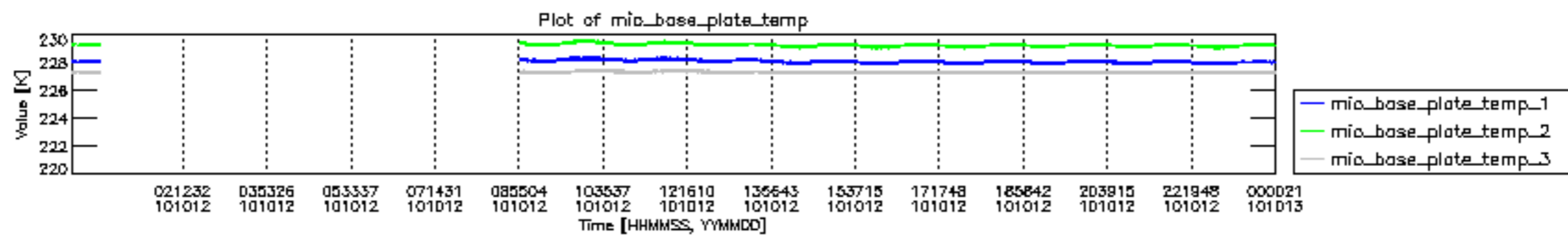


mipas\_daily\_report\_level0\_\_any\_version\_\_20101012\_12.PNG

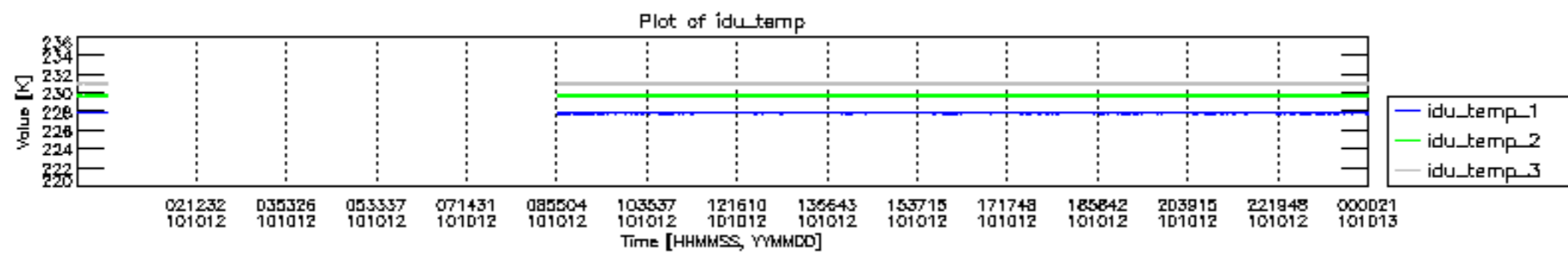


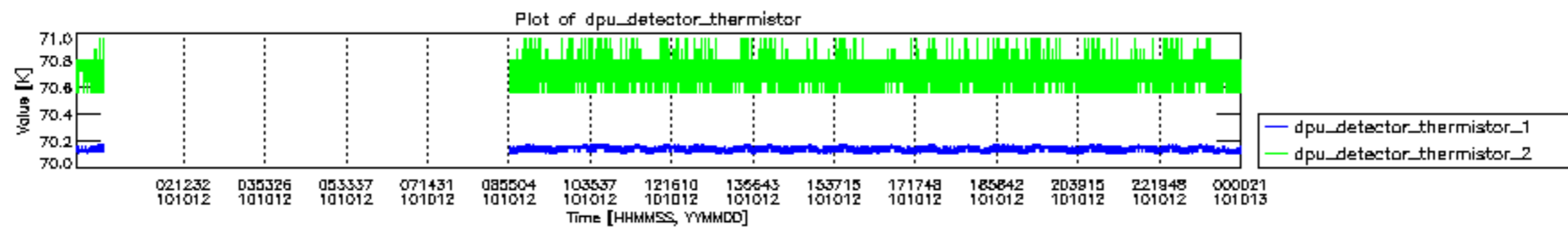
mipas\_daily\_report\_level0\_\_any\_version\_\_20101012\_13.PNG

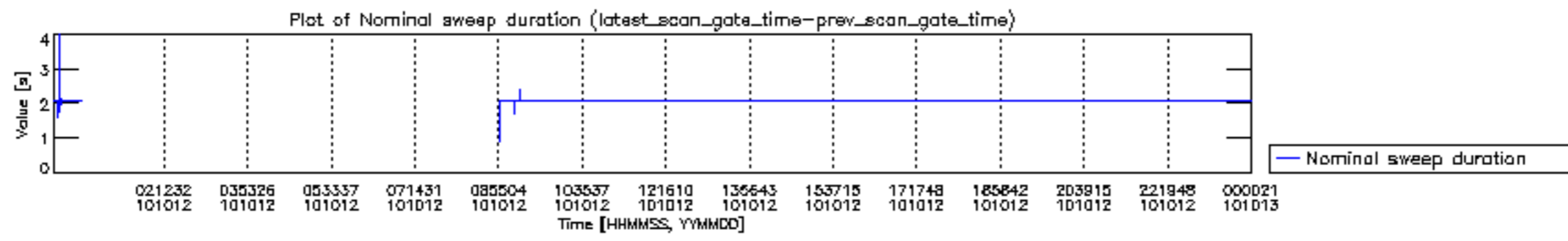


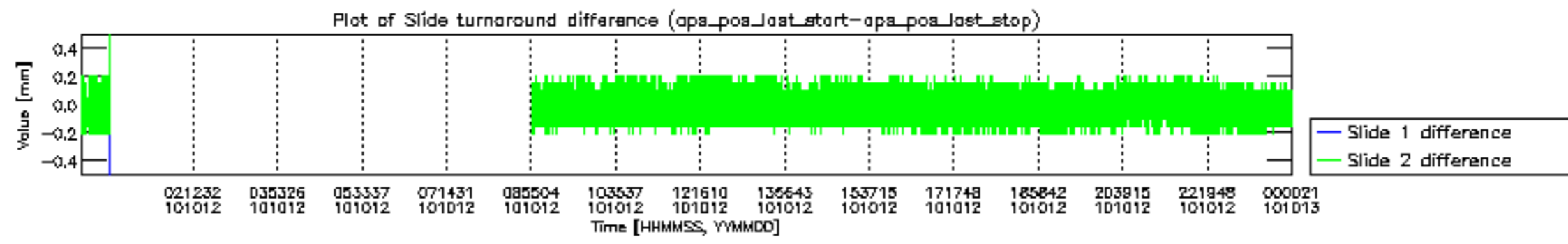


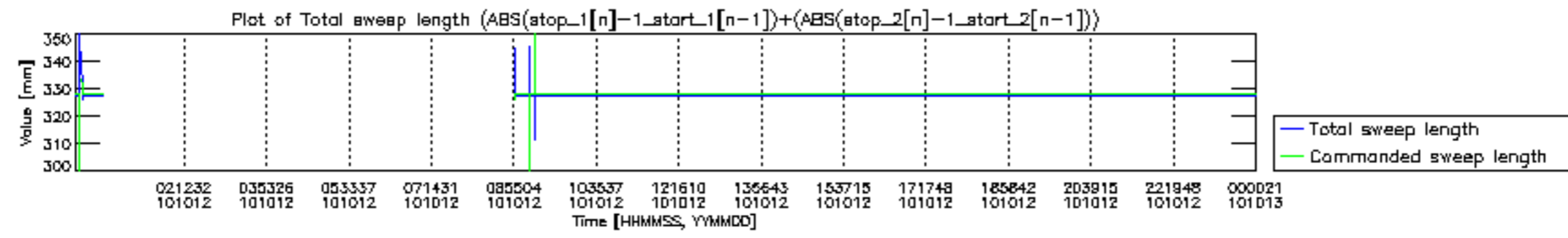


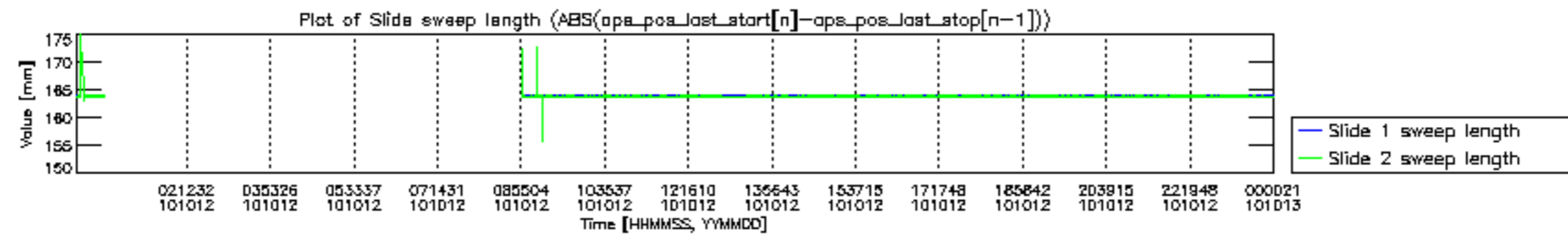


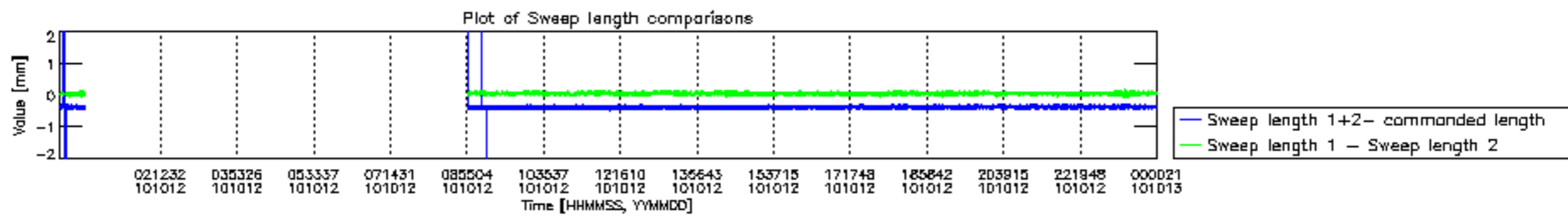


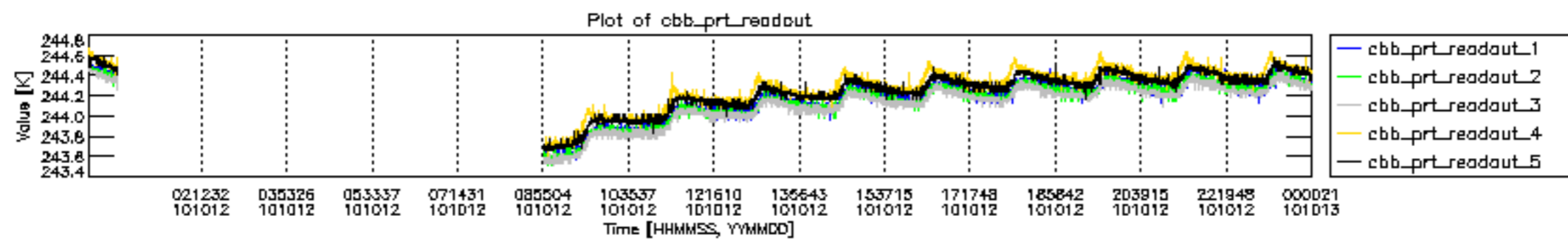




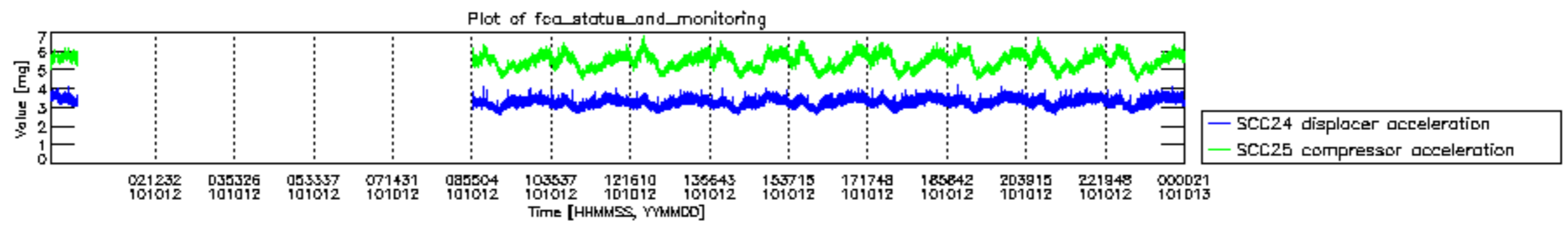












MIPNLOP\_MIPSOUPAC\_aux\_fields\_igm\_cal, channel statistics plot  
 Colour indicates value.

