

0. MIPAS Daily Report for level 0 products

[0.1 General Info](#)

[0.2 Instrument Operational Performance Parameters](#)

[0.3 ADF monitoring](#)

0.1 General Info

This report contains a daily analysis on parameters extracted from MIPAS level 0 data (The MIP_NL__0P product).

0.1.1 Report summary

The table below shows general characteristics of the data that are included into this report.

Item	Value
Report version	v1.5 2008-02-08
Time of report generation	16OCT2010 05:20:11
Data source version	<any version>
Processing scope for products	11OCT2010 00:00:00 to 12OCT2010 00:00:00
Start time of first product within scope	11OCT2010 00:20:27
Stop time of last product within scope	11OCT2010 20:53:20
Total number of level 0 products	18
Number of level 0 products with errors	0

0.1.2 Product Quality Indicators per product

The following table shows a summary for each product used in this report.

#	Product name	Start time	Stop time	Prod err	ISP err sign	ISP miss sign	ISP disc sign	rs sign
0	MIP_NL__0PNPDE20101011_002027_000008842093_00388_45031_3007.N1	11OCT2010 00:20:27	11OCT2010 00:35:11	0	0	0	0	0
1	MIP_NL__0PNPDE20101011_003919_000046692093_00389_45032_3008.N1	11OCT2010 00:39:19	11OCT2010 01:57:08	0	0	0	0	0
2	MIP_NL__0PNPDE20101011_015554_000045792093_00389_45032_3009.N1	11OCT2010 01:55:54	11OCT2010 03:12:14	0	0	0	0	0
3	MIP_NL__0PNPDE20101011_031140_000061792093_00390_45033_3010.N1	11OCT2010 03:11:40	11OCT2010 04:54:40	0	0	0	0	0
4	MIP_NL__0PNPDE20101011_045406_000060672093_00391_45034_3011.N1	11OCT2010 04:54:06	11OCT2010 06:35:13	0	0	0	0	0
5	MIP_NL__0PNPDE20101011_205125_000045462093_00401_45044_3012.N1	11OCT2010 20:51:25	11OCT2010 22:07:11	0	0	0	0	0
6	MIP_NL__0PNPDE20101011_220514_000061882093_00401_45044_3013.N1	11OCT2010 22:05:14	11OCT2010 23:48:22	0	0	0	0	0
7	MIP_NL__0PNPDE20101011_234722_000009732093_00402_45045_3014.N1	11OCT2010 23:47:22	12OCT2010 00:03:34	0	0	0	0	0
8	MIP_NL__0PNPDK20101011_063440_000040172093_00392_45035_3082.N1	11OCT2010 06:34:40	11OCT2010 07:41:37	0	0	0	0	0
9	MIP_NL__0PNPDK20101011_073957_000062712093_00393_45036_3083.N1	11OCT2010 07:39:57	11OCT2010 09:24:28	0	0	0	0	0
10	MIP_NL__0PNPDK20101011_092336_000060412093_00394_45037_3084.N1	11OCT2010 09:23:36	11OCT2010 11:04:17	0	0	0	0	0
11	MIP_NL__0PNPDK20101011_110247_000059772093_00395_45038_3085.N1	11OCT2010 11:02:47	11OCT2010 12:42:24	0	0	0	0	0
12	MIP_NL__0PNPDK20101011_124126_000059812093_00396_45039_3086.N1	11OCT2010 12:41:26	11OCT2010 14:21:07	0	0	0	0	0
13	MIP_NL__0PNPDK20101011_141926_000011392093_00397_45040_3087.N1	11OCT2010 14:19:26	11OCT2010 14:38:25	0	0	0	0	0
14	MIP_NL__0PNPDK20101011_143825_000047782093_00397_45040_3088.N1	11OCT2010 14:38:25	11OCT2010 15:58:03	0	0	0	0	0
15	MIP_NL__0PNPDK20101011_155620_000059892093_00398_45041_3089.N1	11OCT2010 15:56:20	11OCT2010 17:36:10	0	0	0	0	0
16	MIP_NL__0PNPDK20101011_173509_000057872093_00399_45042_3090.N1	11OCT2010 17:35:09	11OCT2010 19:11:36	0	0	0	0	0
17	MIP_NL__0PNPDK20101011_190924_000062362093_00400_45043_3091.N1	11OCT2010 19:09:24	11OCT2010 20:53:20	0	0	0	0	0

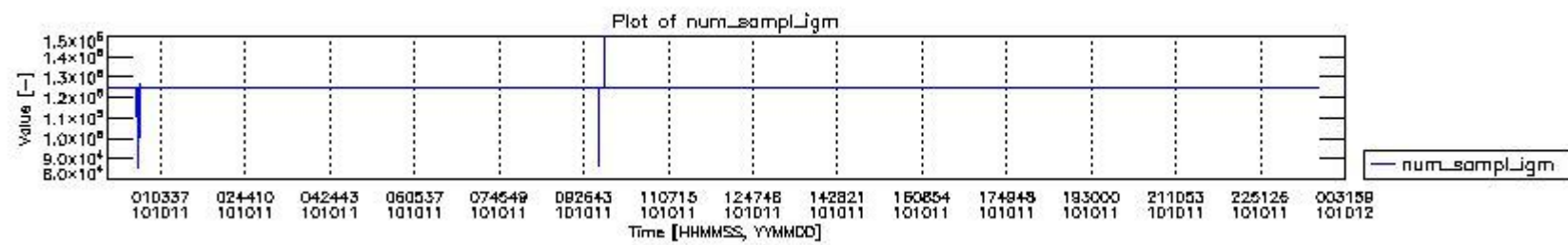
0.2 Instrument Operational Performance Parameters

The following plots give an overview of various instrument parameters for this day. The instrument parameters are part of the auxiliary data field within the source packets of the MIP_NL__0P product. The auxiliary data is normally included twice per interferogram. Note that only the first packet is currently included in monitoring.

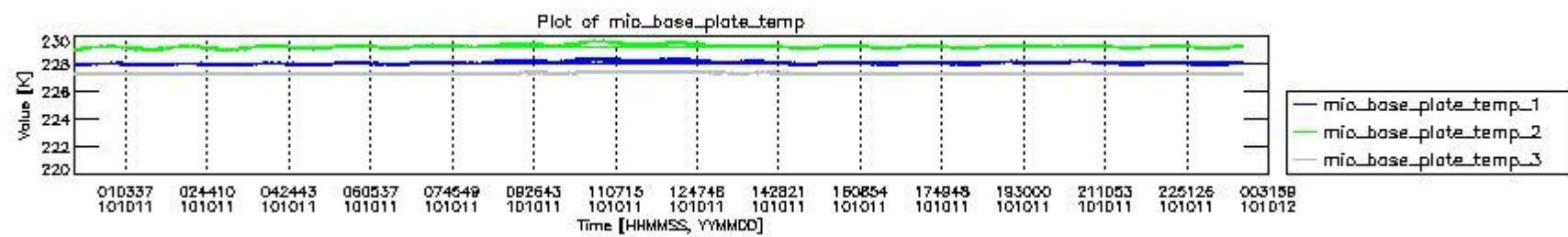
The following table shows the counts of various interferogram number of samples

Number of igm samples	Count [#]	Count [%]
-----------------------	-----------	-----------

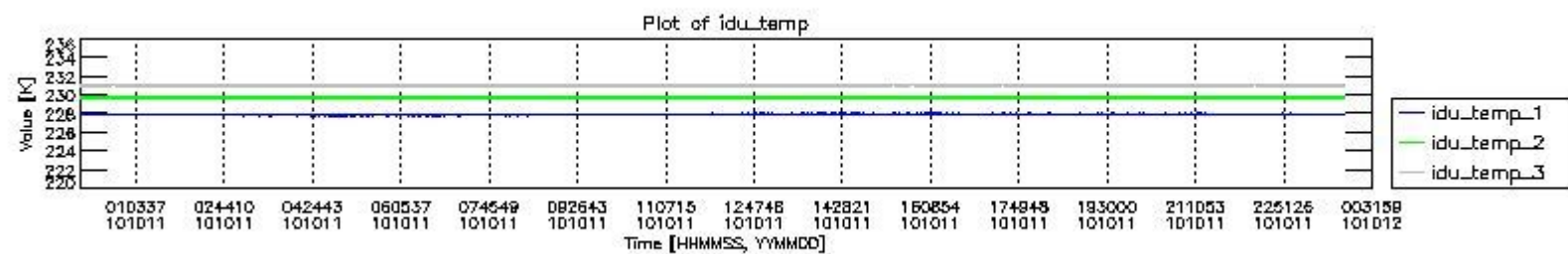
85418	1	0.0024018831
86460	1	0.0024018831
95043	1	0.0024018831
95564	1	0.0024018831
100632	1	0.0024018831
105112	1	0.0024018831
114737	1	0.0024018831
115696	1	0.0024018831
124800	38836	93.279531
124803	2785	6.6892444
125884	1	0.0024018831
126968	1	0.0024018831
127308	1	0.0024018831
147440	1	0.0024018831
149948	1	0.0024018831



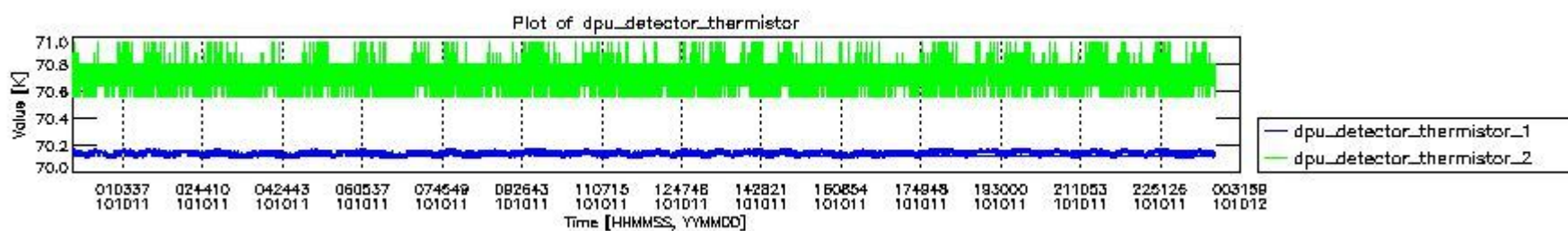
mipas_daily_report_level0_any_version_20101011_0.PNG



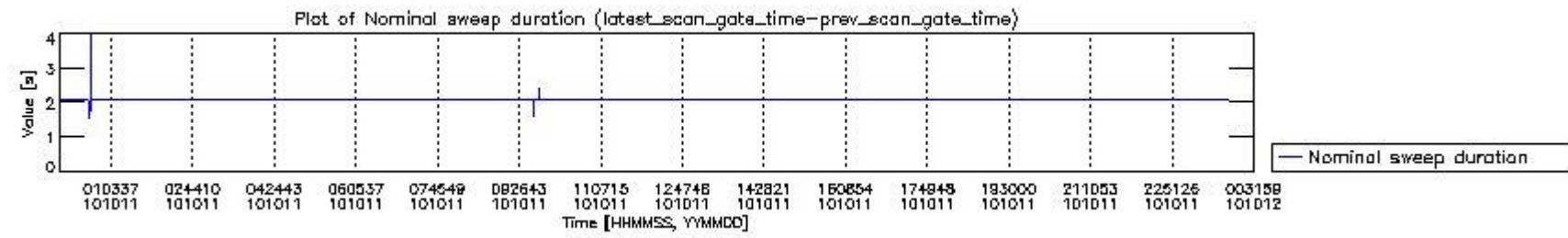
mipas_daily_report_level0_any_version_20101011_1.PNG



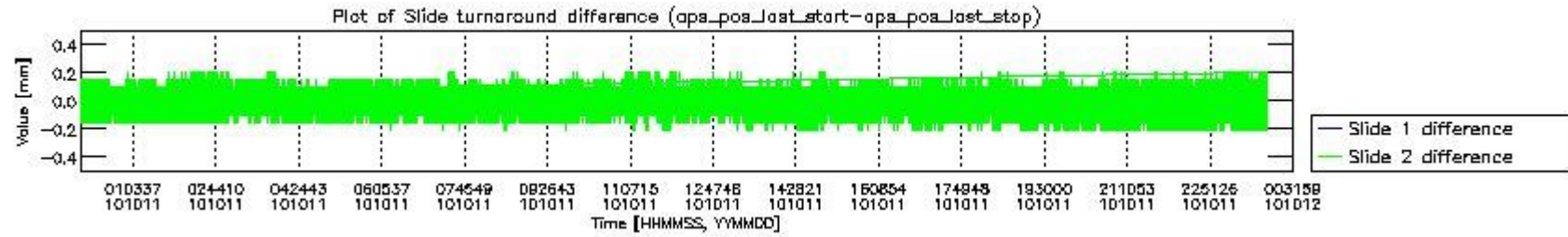
mipas_daily_report_level0_any_version_20101011_2.PNG



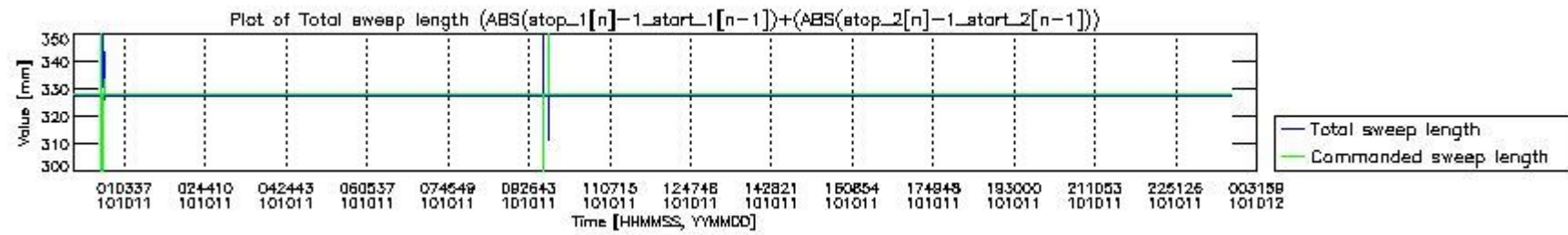
mipas_daily_report_level0_any_version_20101011_3.PNG



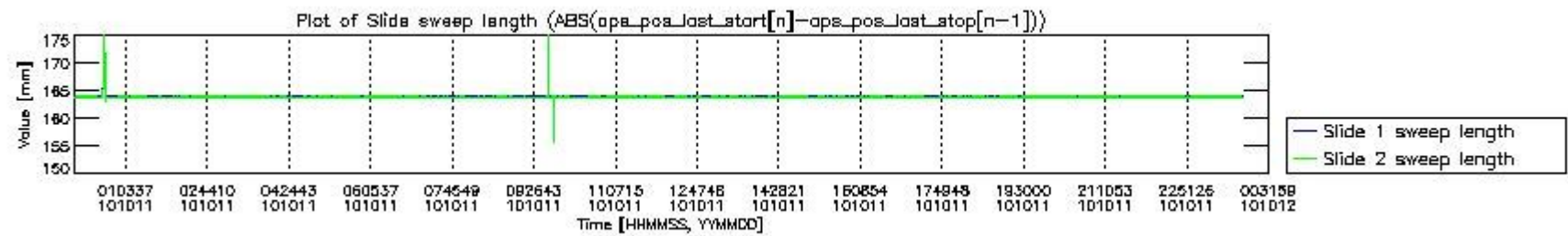
mipas_daily_report_level0_any_version_20101011_4.PNG



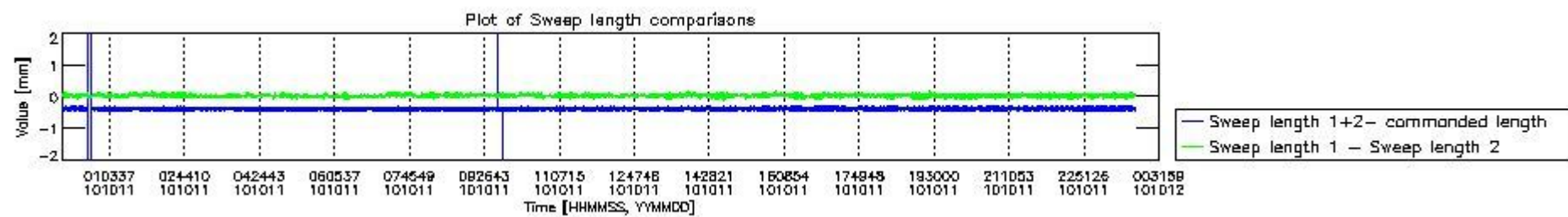
mipas_daily_report_level0_any_version_20101011_5.PNG



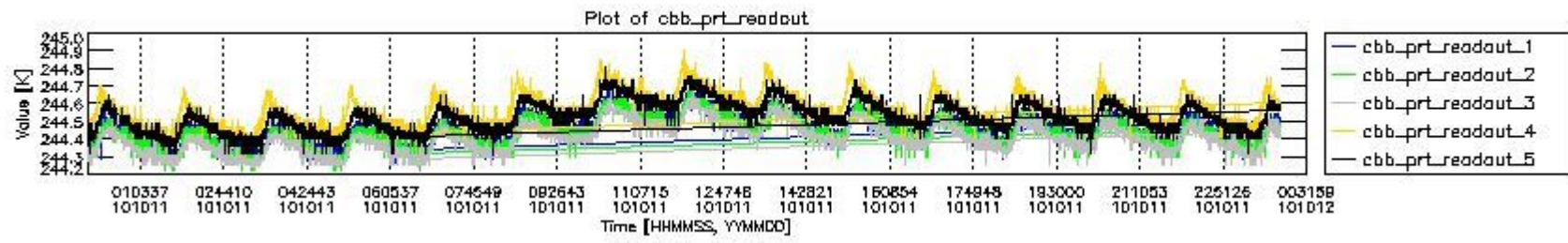
mipas_daily_report_level0_any_version_20101011_6.PNG



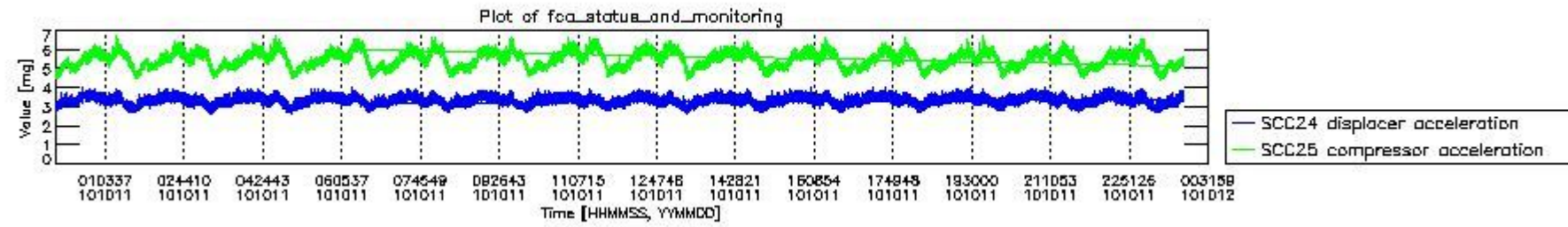
mipas_daily_report_level0_any_version_20101011_7.PNG



mipas_daily_report_level0_any_version_20101011_8.PNG



mipas_daily_report_level0_any_version_20101011_9.PNG

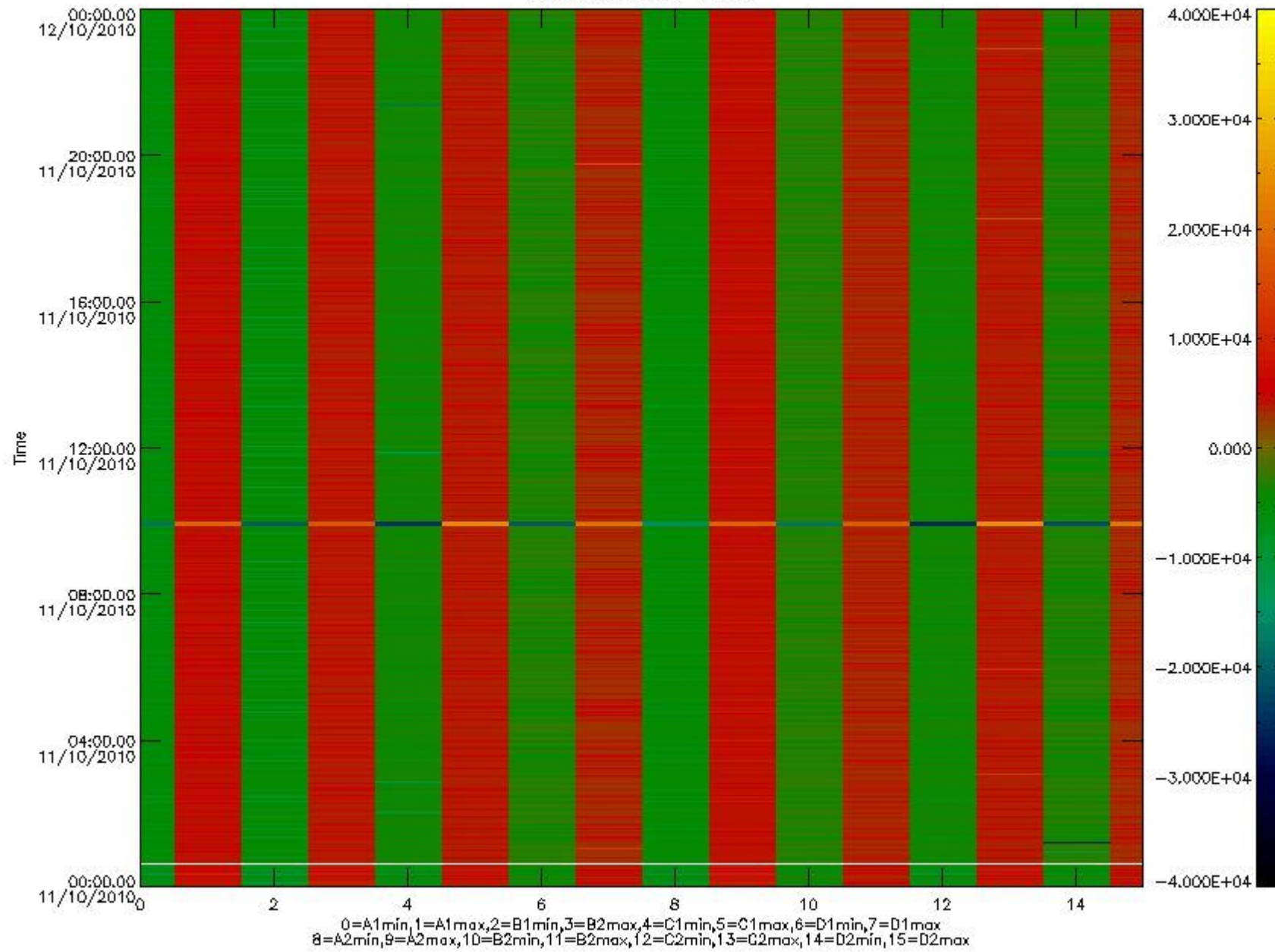


mipas_daily_report_level0_any_version_20101011_10.PNG

The following table shows channel statistics for all channels for this day.

Channel	Min	Max	ADC
A1	-18001	19081	16bit
B1	-20409	17571	16bit
C1	-24617	24532	16bit
D1	-26371	32767	16bit
A2	-15676	19328	16bit
B2	-18228	17919	16bit
C2	-25596	25226	16bit
D2	-32768	28306	16bit

MIPNLOP_MIPSOUPAC_aux_fields_igm_cal, channel statistics plot
Colour indicates value.



mipas_daily_report_level0_any_version_20101011_11.PNG

0.3 ADF monitoring

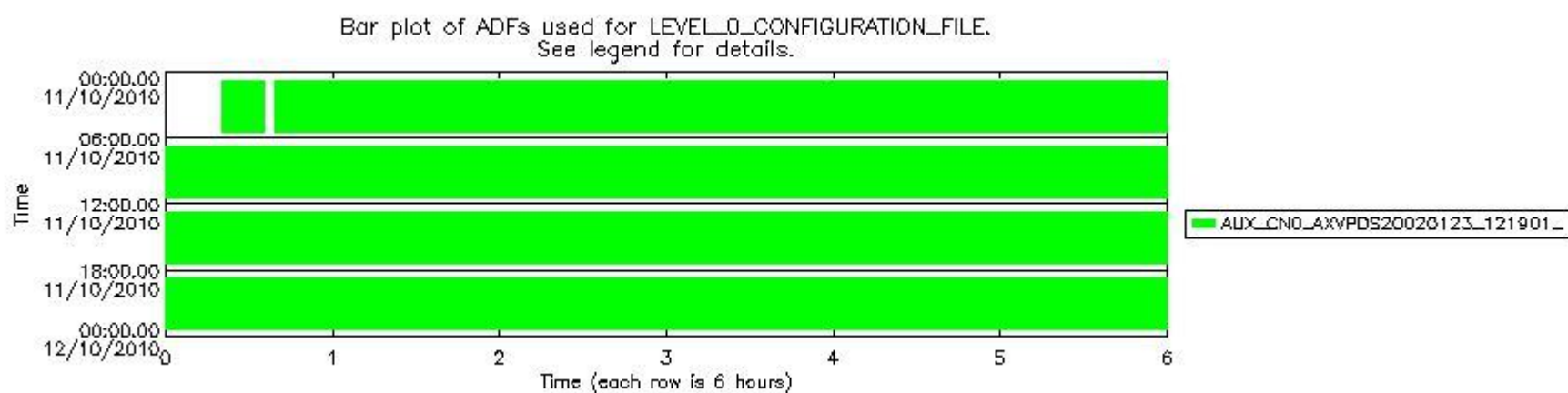
The use of ADFs is shown in two ways:

1. By means of two tables that can be used to find the ADF used for a specific product.
2. By means of plots that show changes in ADF using colours.

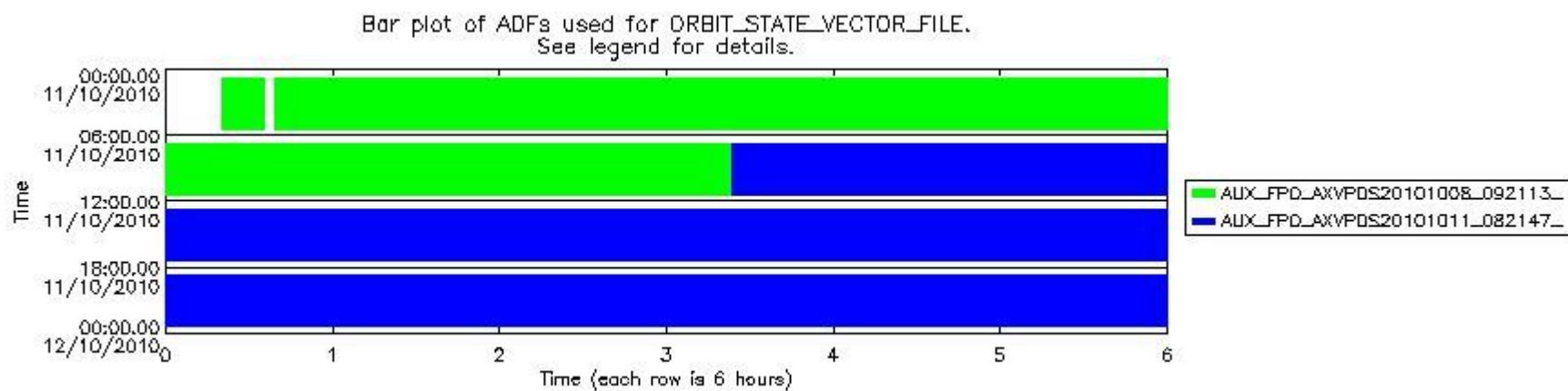
Number	ADF
0	AUX_CN0_AXVPDS20020123_121901_20020101_000000_20200101_000000
1	AUX_FPO_AXVPDS20101008_092113_20101007_192405_20101017_205016
2	AUX_FPO_AXVPDS20101011_082147_20101010_192949_20101020_205600

Number	Product name	#CN0	#FPO
--------	--------------	------	------

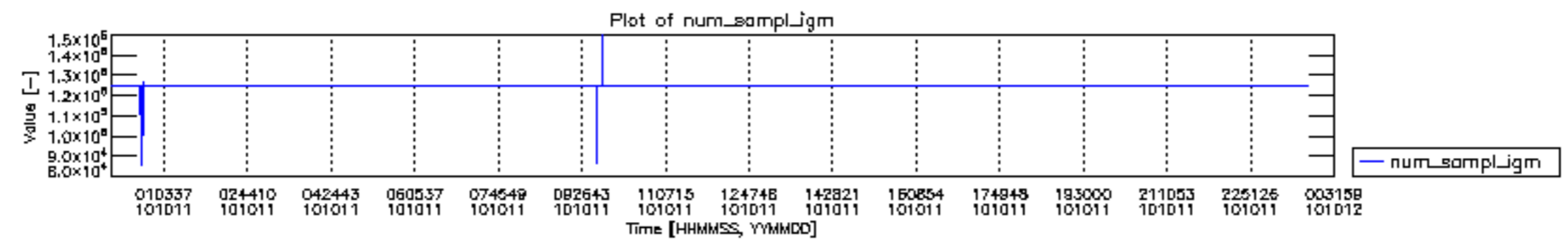
0	MIP_NL__0PNPDE20101011_002027_000008842093_00388_45031_3007.N1	0	1
1	MIP_NL__0PNPDE20101011_003919_000046692093_00389_45032_3008.N1	0	1
2	MIP_NL__0PNPDE20101011_015554_000045792093_00389_45032_3009.N1	0	1
3	MIP_NL__0PNPDE20101011_031140_000061792093_00390_45033_3010.N1	0	1
4	MIP_NL__0PNPDE20101011_045406_000060672093_00391_45034_3011.N1	0	1
5	MIP_NL__0PNPDE20101011_205125_000045462093_00401_45044_3012.N1	0	2
6	MIP_NL__0PNPDE20101011_220514_000061882093_00401_45044_3013.N1	0	2
7	MIP_NL__0PNPDE20101011_234722_000009732093_00402_45045_3014.N1	0	2
8	MIP_NL__0PNPDK20101011_063440_000040172093_00392_45035_3082.N1	0	1
9	MIP_NL__0PNPDK20101011_073957_000062712093_00393_45036_3083.N1	0	1
10	MIP_NL__0PNPDK20101011_092336_000060412093_00394_45037_3084.N1	0	2
11	MIP_NL__0PNPDK20101011_110247_000059772093_00395_45038_3085.N1	0	2
12	MIP_NL__0PNPDK20101011_124126_000059812093_00396_45039_3086.N1	0	2
13	MIP_NL__0PNPDK20101011_141926_000011392093_00397_45040_3087.N1	0	2
14	MIP_NL__0PNPDK20101011_143825_000047782093_00397_45040_3088.N1	0	2
15	MIP_NL__0PNPDK20101011_155620_000059892093_00398_45041_3089.N1	0	2
16	MIP_NL__0PNPDK20101011_173509_000057872093_00399_45042_3090.N1	0	2
17	MIP_NL__0PNPDK20101011_190924_000062362093_00400_45043_3091.N1	0	2

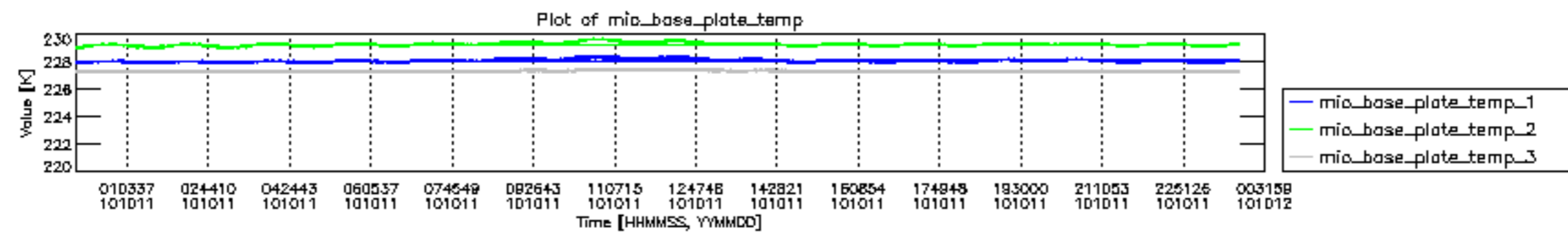


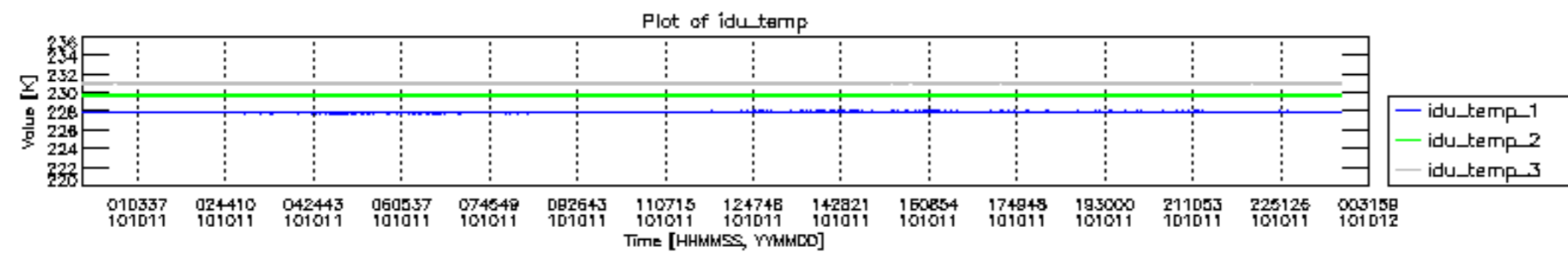
mipas_daily_report_level0__any_version__20101011_12.PNG

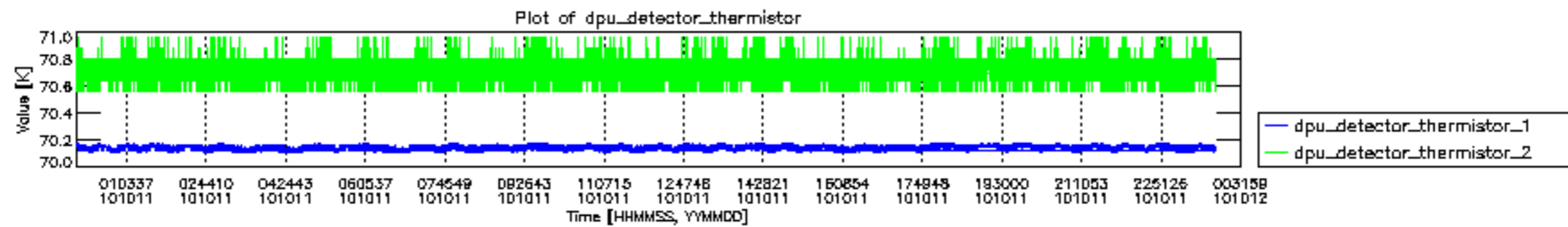


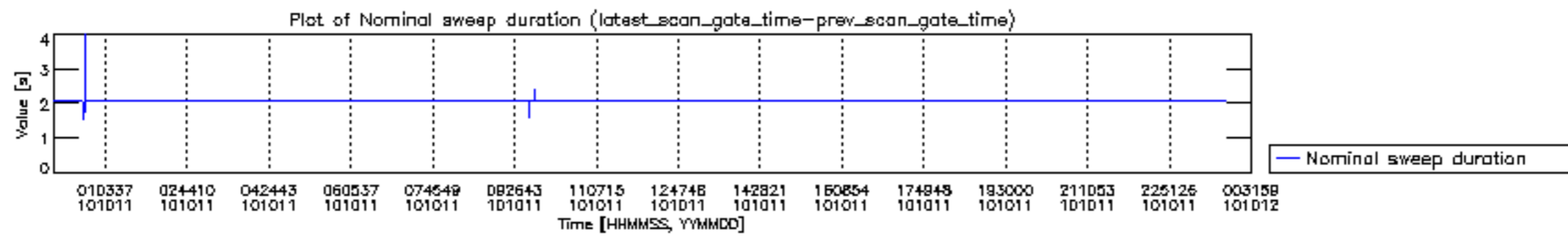
mipas_daily_report_level0__any_version__20101011_13.PNG

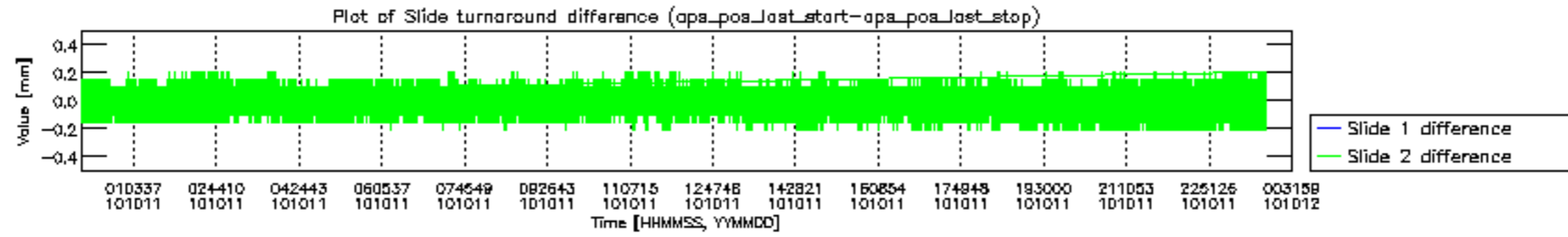


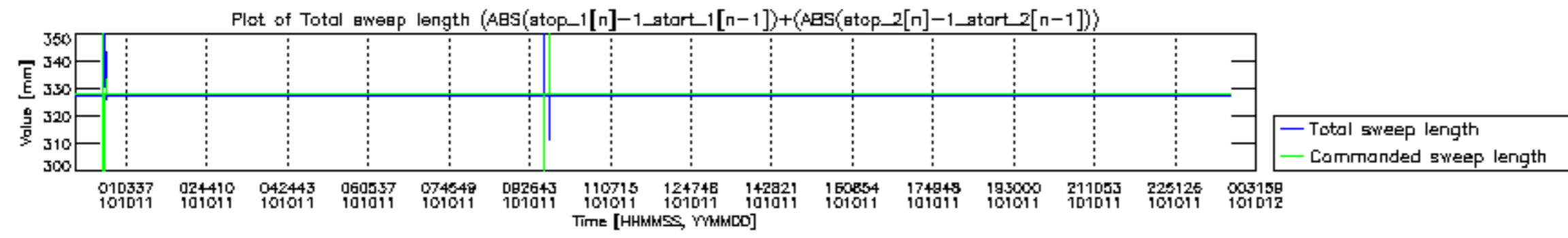


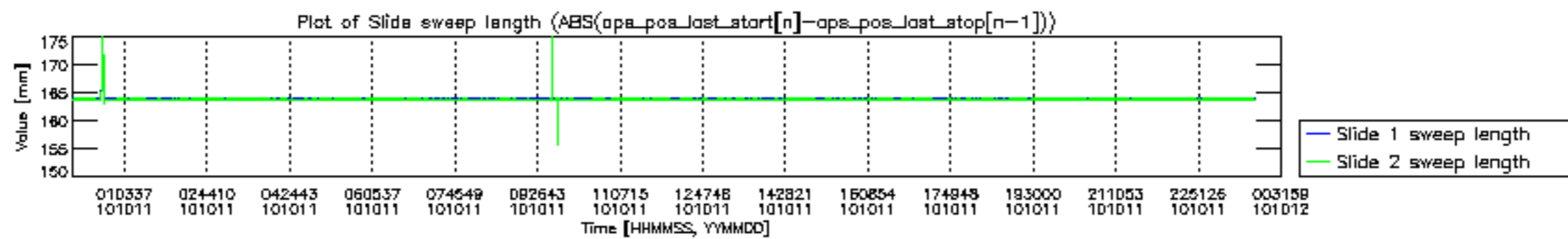


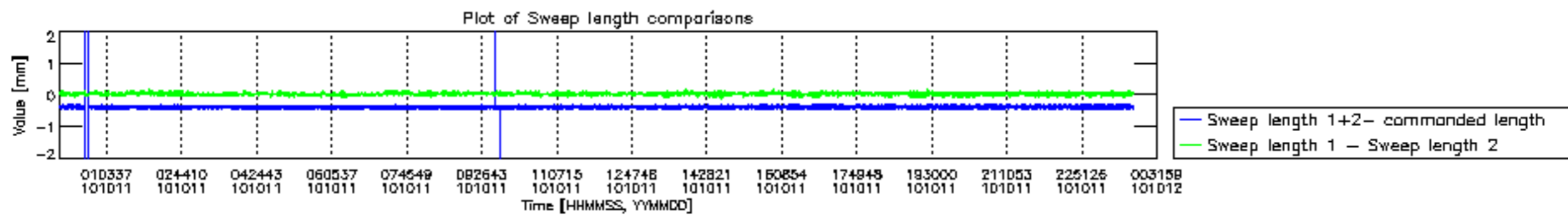


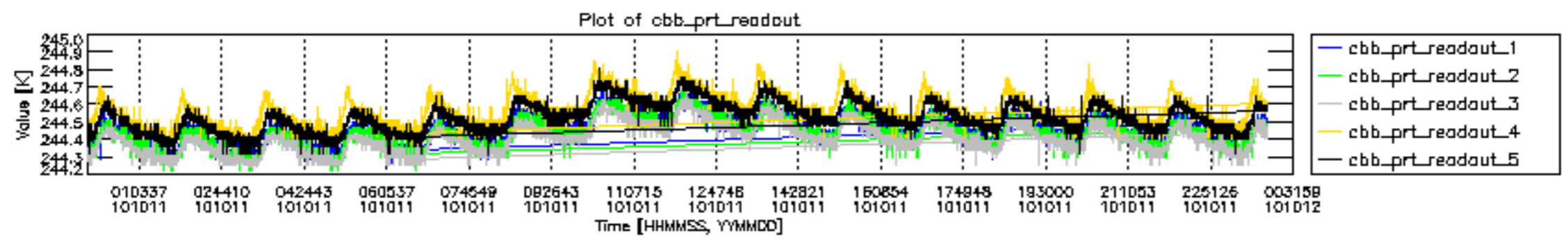


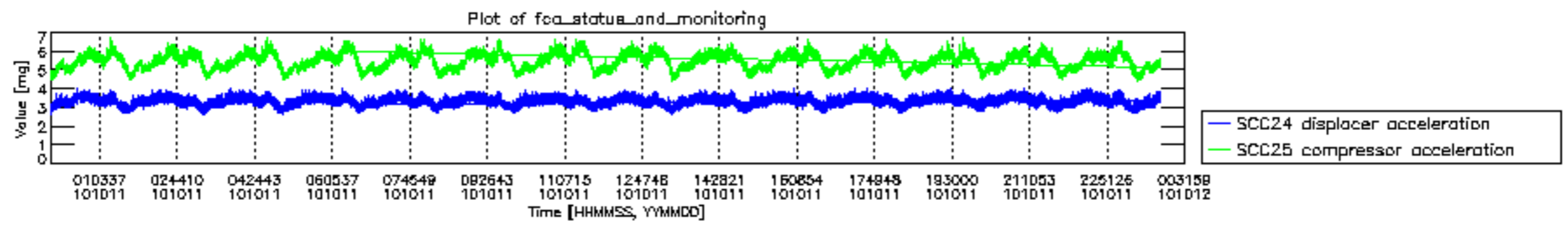












MIPNLOP_MIPSOUPAC_aux_fields_igm_cal, channel statistics plot
 Colour indicates value.



