

0. MIPAS Daily Report for level 0 products

[0.1 General Info](#)

[0.2 Instrument Operational Performance Parameters](#)

[0.3 ADF monitoring](#)

0.1 General Info

This report contains a daily analysis on parameters extracted from MIPAS level 0 data (The MIP_NL__0P product).

0.1.1 Report summary

The table below shows general characteristics of the data that are included into this report.

Item	Value
Report version	v1.5 2008-02-08
Time of report generation	15OCT2010 05:21:34
Data source version	<any version>
Processing scope for products	10OCT2010 00:00:00 to 11OCT2010 00:00:00
Start time of first product within scope	10OCT2010 00:50:50
Stop time of last product within scope	10OCT2010 19:41:58
Total number of level 0 products	15
Number of level 0 products with errors	0

0.1.2 Product Quality Indicators per product

The following table shows a summary for each product used in this report.

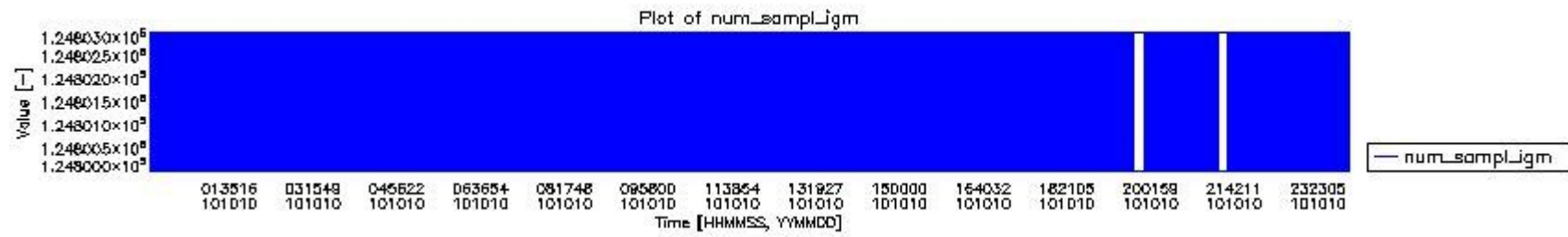
#	Product name	Start time	Stop time	Prod err	ISP err sign	ISP miss sign	ISP disc sign	rs sign
0	MIP_NL__0PNPDE20101010_005050_000096662093_00374_45017_2092.N1	10OCT2010 00:50:50	10OCT2010 03:31:56	0	0	0	0	0
1	MIP_NL__0PNPDE20101010_033125_000069382093_00376_45019_2093.N1	10OCT2010 03:31:25	10OCT2010 05:27:02	0	0	0	0	0
2	MIP_NL__0PNPDE20101010_052629_000059682093_00377_45020_3002.N1	10OCT2010 05:26:29	10OCT2010 07:05:57	0	0	0	0	0
3	MIP_NL__0PNPDE20101010_195317_000036562093_00386_45029_3003.N1	10OCT2010 19:53:17	10OCT2010 20:54:13	0	0	0	0	0
4	MIP_NL__0PNPDE20101010_205308_000018052093_00386_45029_3004.N1	10OCT2010 20:53:08	10OCT2010 21:23:13	0	0	0	0	0
5	MIP_NL__0PNPDE20101010_213401_000039802093_00387_45030_3005.N1	10OCT2010 21:34:01	10OCT2010 22:40:21	0	0	0	0	0
6	MIP_NL__0PNPDE20101010_223920_000061312093_00387_45030_3006.N1	10OCT2010 22:39:20	11OCT2010 00:21:32	0	0	0	0	0
7	MIP_NL__0PNPDK20101010_070524_000040572093_00378_45021_3074.N1	10OCT2010 07:05:24	10OCT2010 08:13:01	0	0	0	0	0
8	MIP_NL__0PNPDK20101010_081205_000062402093_00379_45022_3075.N1	10OCT2010 08:12:05	10OCT2010 09:56:05	0	0	0	0	0
9	MIP_NL__0PNPDK20101010_095519_000059892093_00380_45023_3076.N1	10OCT2010 09:55:19	10OCT2010 11:35:08	0	0	0	0	0
10	MIP_NL__0PNPDK20101010_113334_000060522093_00381_45024_3077.N1	10OCT2010 11:33:34	10OCT2010 13:14:26	0	0	0	0	0
11	MIP_NL__0PNPDK20101010_131330_000057832093_00382_45025_3078.N1	10OCT2010 13:13:30	10OCT2010 14:49:53	0	0	0	0	0
12	MIP_NL__0PNPDK20101010_144812_000061272093_00383_45026_3079.N1	10OCT2010 14:48:12	10OCT2010 16:30:20	0	0	0	0	0
13	MIP_NL__0PNPDK20101010_162839_000059772093_00384_45027_3080.N1	10OCT2010 16:28:39	10OCT2010 18:08:16	0	0	0	0	0
14	MIP_NL__0PNPDK20101010_180657_000057012093_00385_45028_3081.N1	10OCT2010 18:06:57	10OCT2010 19:41:58	0	0	0	0	0

0.2 Instrument Operational Performance Parameters

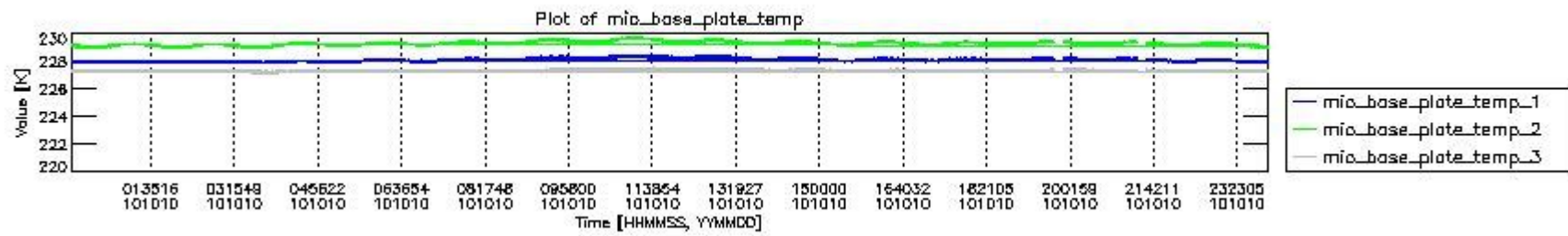
The following plots give an overview of various instrument parameters for this day. The instrument parameters are part of the auxiliary data field within the source packets of the MIP_NL__0P product. The auxiliary data is normally included twice per interferogram. Note that only the first packet is currently included in monitoring.

The following table shows the counts of various interferogram number of samples

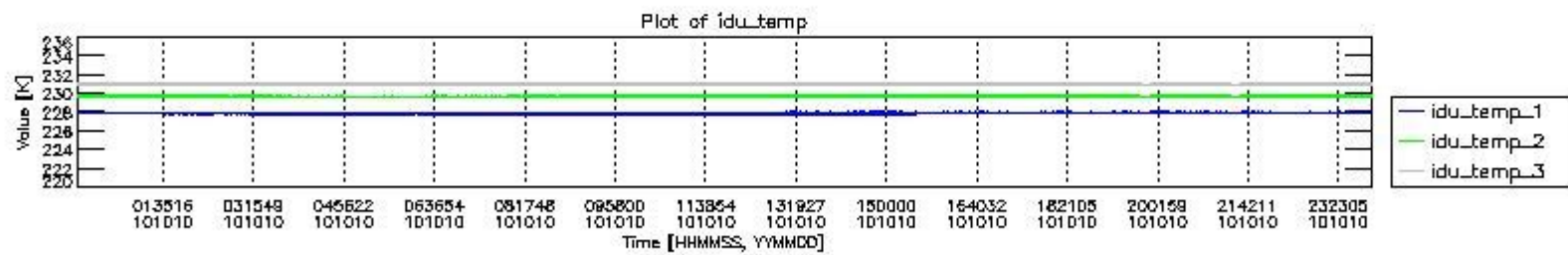
Number of igm samples	Count [#]	Count [%]
124800	37824	92.842415
124803	2916	7.1575847



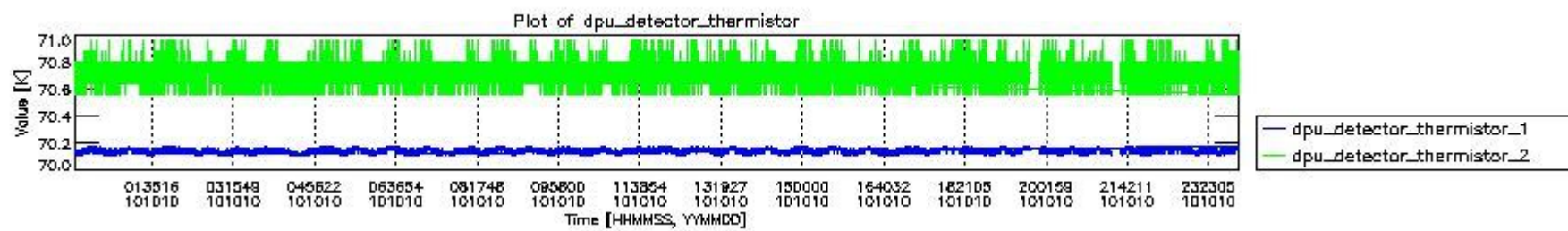
mipas_daily_report_level0_any_version_20101010_0.PNG



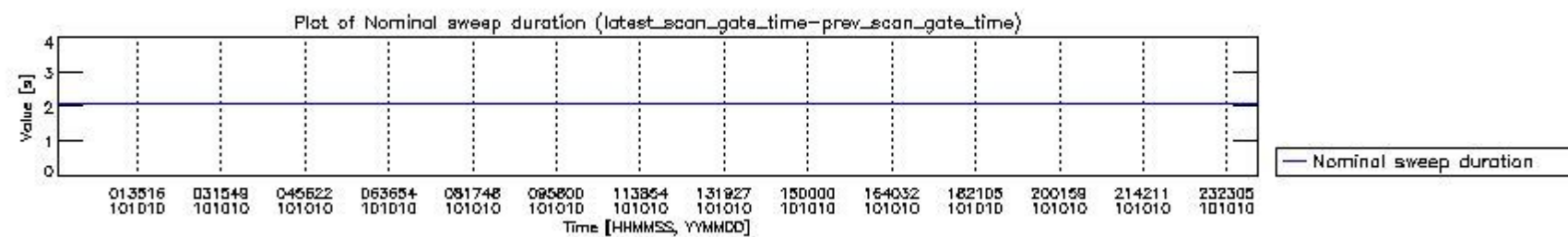
mipas_daily_report_level0_any_version_20101010_1.PNG



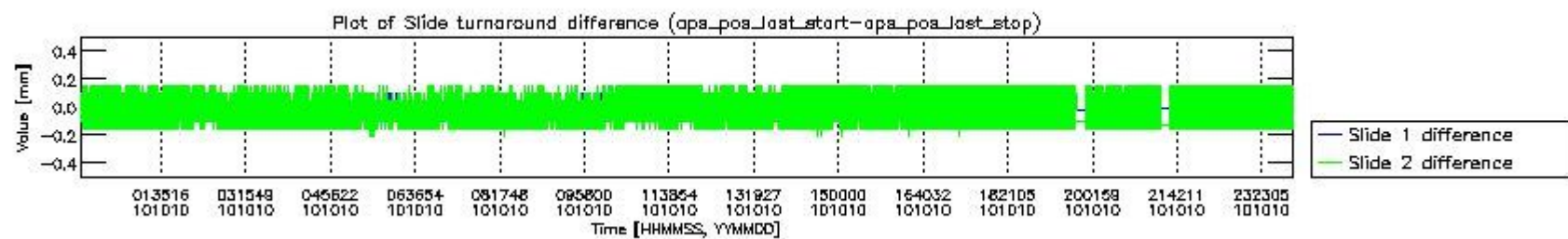
mipas_daily_report_level0_any_version_20101010_2.PNG



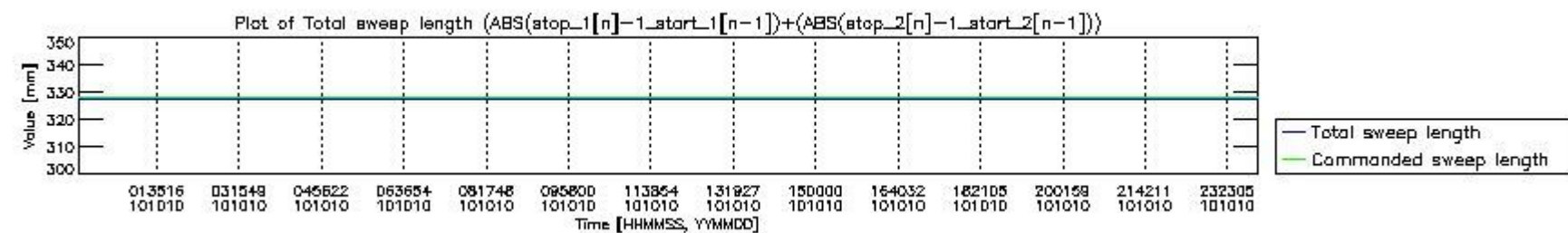
mipas_daily_report_level0_any_version_20101010_3.PNG



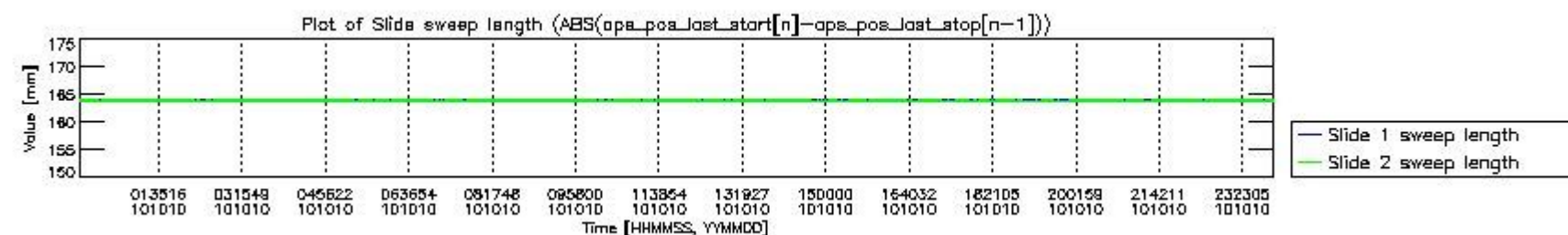
mipas_daily_report_level0_any_version_20101010_4.PNG



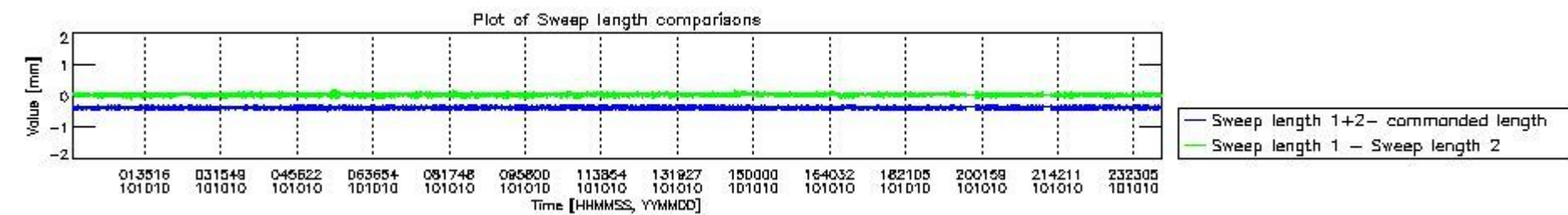
mipas_daily_report_level0_any_version_20101010_5.PNG



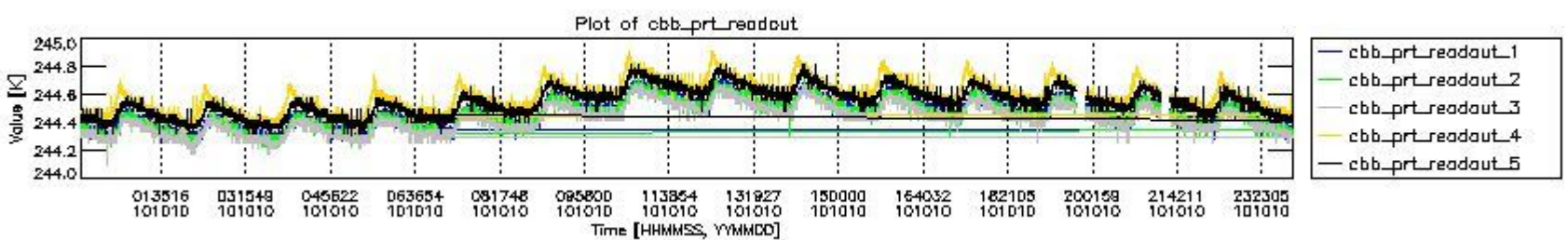
mipas_daily_report_level0_any_version_20101010_6.PNG



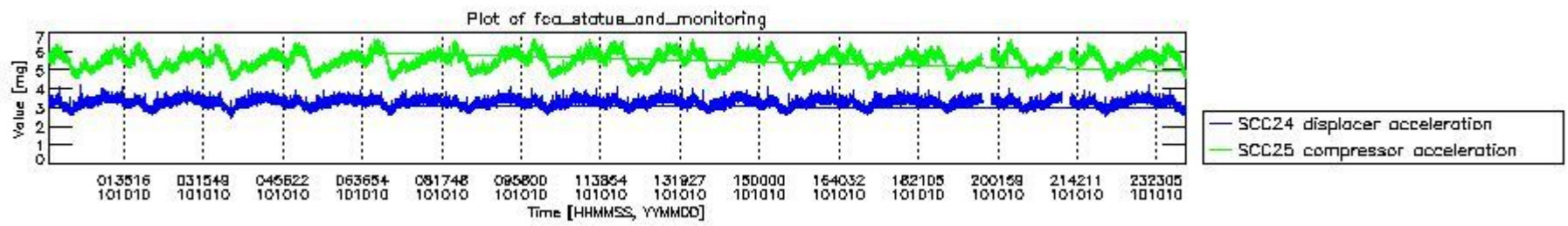
mipas_daily_report_level0_any_version_20101010_7.PNG



mipas_daily_report_level0_any_version_20101010_8.PNG



mipas_daily_report_level0_any_version_20101010_9.PNG

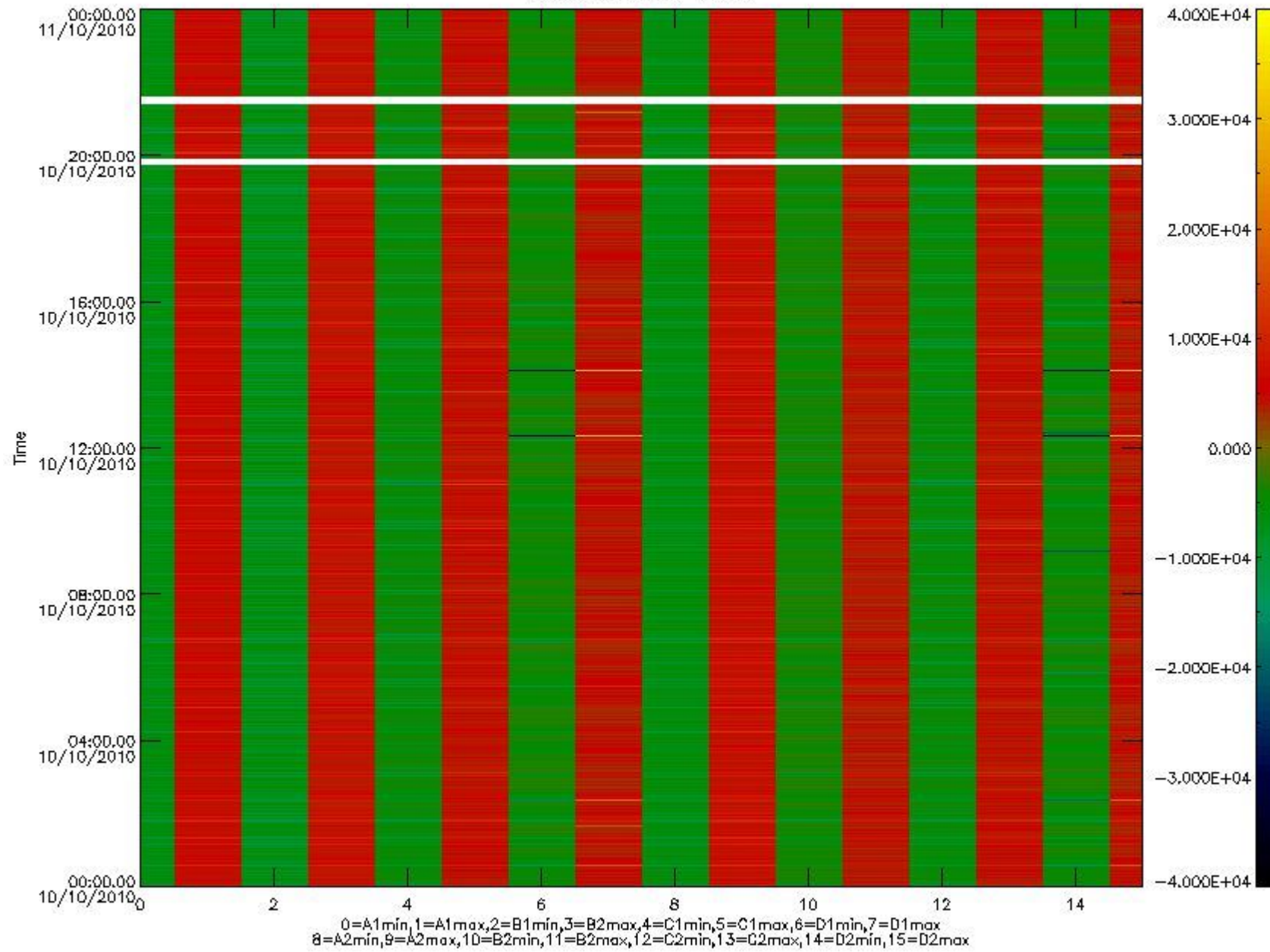


mipas_daily_report_level0_any_version_20101010_10.PNG

The following table shows channel statistics for all channels for this day.

Channel	Min	Max	ADC
A1	-16865	17922	16bit
B1	-16556	14224	16bit
C1	-24793	15626	16bit
D1	-32768	32767	16bit
A2	-14371	17409	16bit
B2	-12672	12639	16bit
C2	-15522	25074	16bit
D2	-32768	32767	16bit

MIPNLOP_MIPSOUPAC_aux_fields_igm_cal, channel statistics plot
Colour indicates value.



mipas_daily_report_level0_any_version_20101010_11.PNG

0.3 ADF monitoring

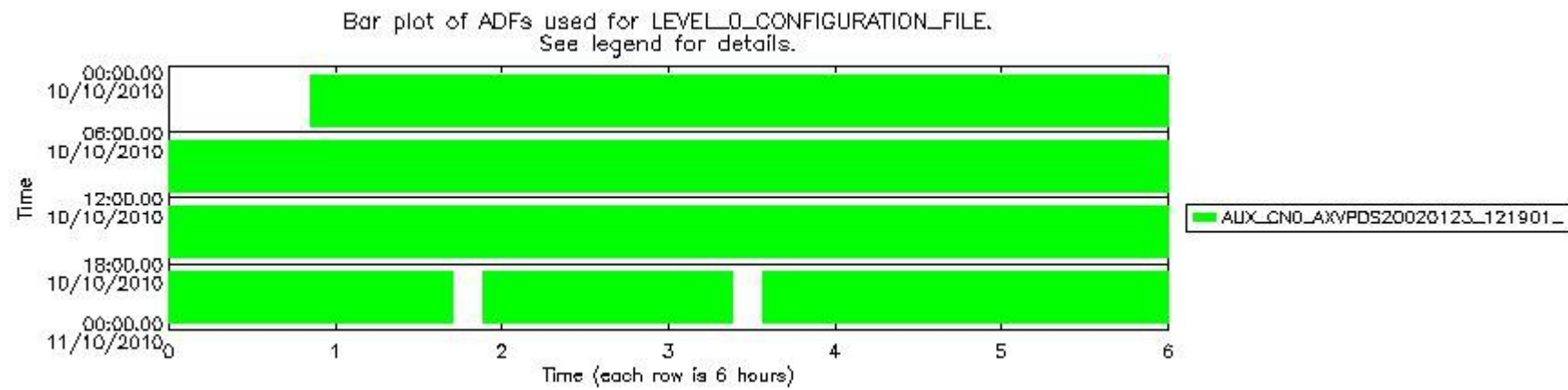
The use of ADFs is shown in two ways:

1. By means of two tables that can be used to find the ADF used for a specific product.
2. By means of plots that show changes in ADF using colours.

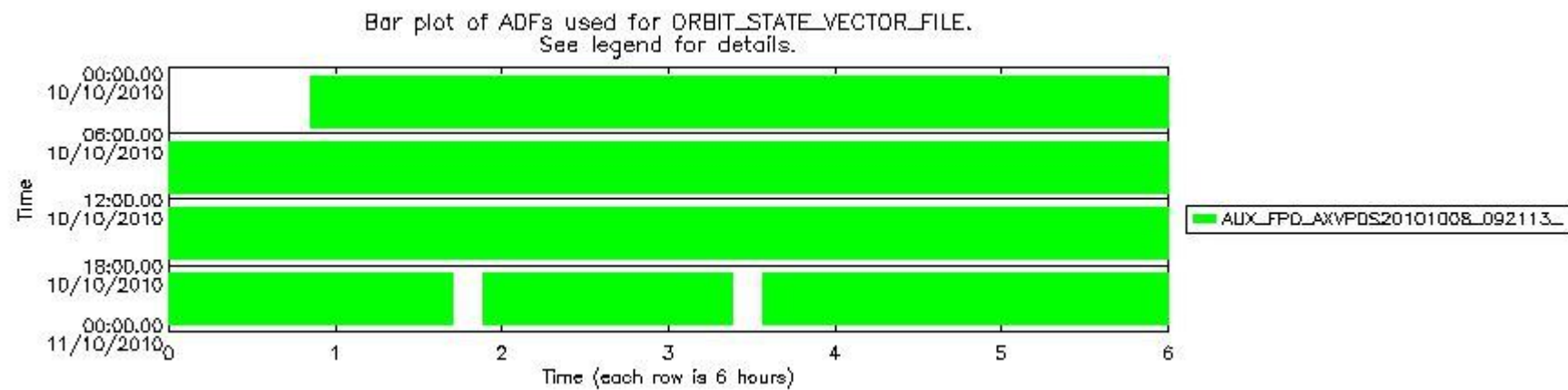
Number	ADF
0	AUX_CN0_AXVPDS20020123_121901_20020101_000000_20200101_000000
1	AUX_FPO_AXVPDS20101008_092113_20101007_192405_20101017_205016

Number	Product name	#CN0	#FPO
0	MIP_NL_0PNPDE20101010_005050_000096662093_00374_45017_2092.N1	0	1

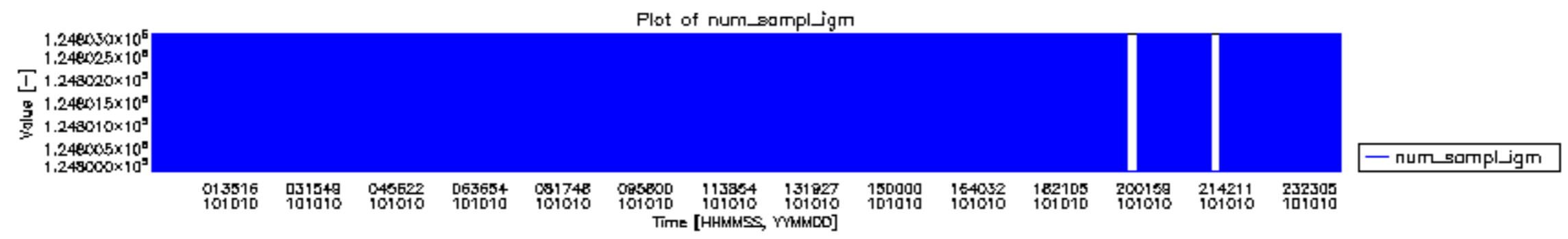
1	MIP_NL__0PNPDE20101010_033125_000069382093_00376_45019_2093.N1	0	1
2	MIP_NL__0PNPDE20101010_052629_000059682093_00377_45020_3002.N1	0	1
3	MIP_NL__0PNPDE20101010_195317_000036562093_00386_45029_3003.N1	0	1
4	MIP_NL__0PNPDE20101010_205308_000018052093_00386_45029_3004.N1	0	1
5	MIP_NL__0PNPDE20101010_213401_000039802093_00387_45030_3005.N1	0	1
6	MIP_NL__0PNPDE20101010_223920_000061312093_00387_45030_3006.N1	0	1
7	MIP_NL__0PNPDK20101010_070524_000040572093_00378_45021_3074.N1	0	1
8	MIP_NL__0PNPDK20101010_081205_000062402093_00379_45022_3075.N1	0	1
9	MIP_NL__0PNPDK20101010_095519_000059892093_00380_45023_3076.N1	0	1
10	MIP_NL__0PNPDK20101010_113334_000060522093_00381_45024_3077.N1	0	1
11	MIP_NL__0PNPDK20101010_131330_000057832093_00382_45025_3078.N1	0	1
12	MIP_NL__0PNPDK20101010_144812_000061272093_00383_45026_3079.N1	0	1
13	MIP_NL__0PNPDK20101010_162839_000059772093_00384_45027_3080.N1	0	1
14	MIP_NL__0PNPDK20101010_180657_000057012093_00385_45028_3081.N1	0	1

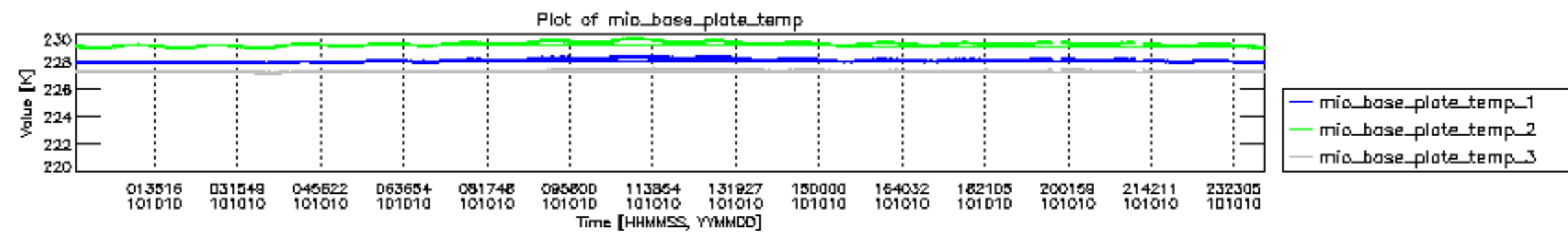


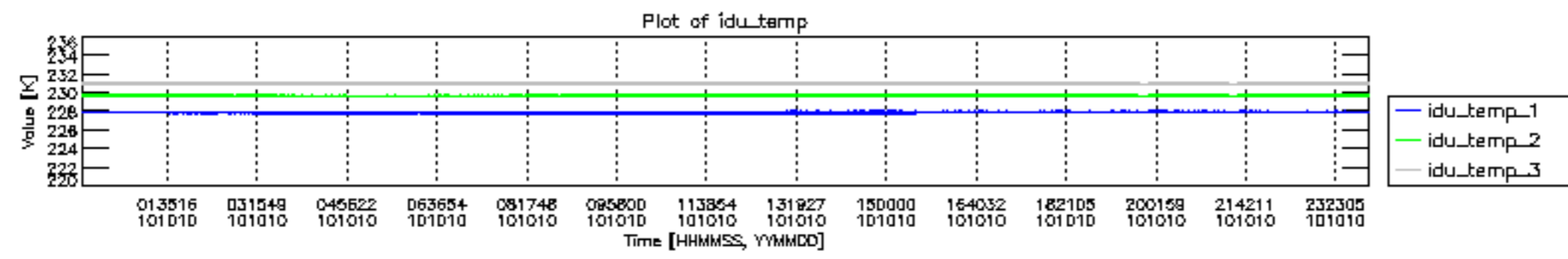
mipas_daily_report_level0__any_version__20101010_12.PNG

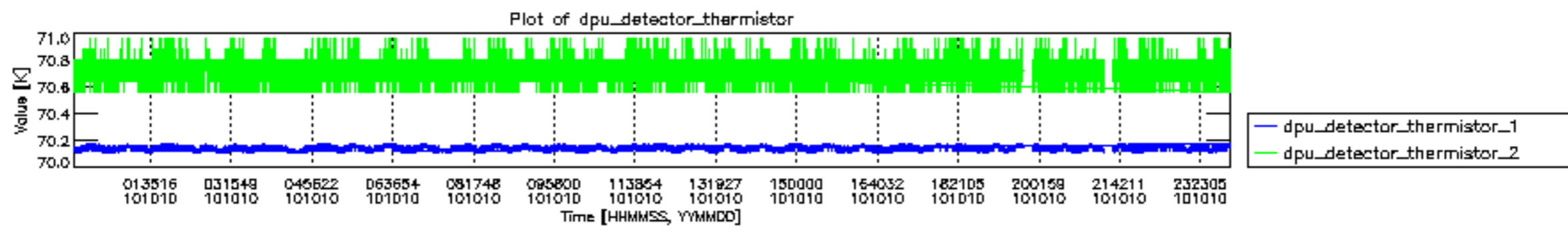


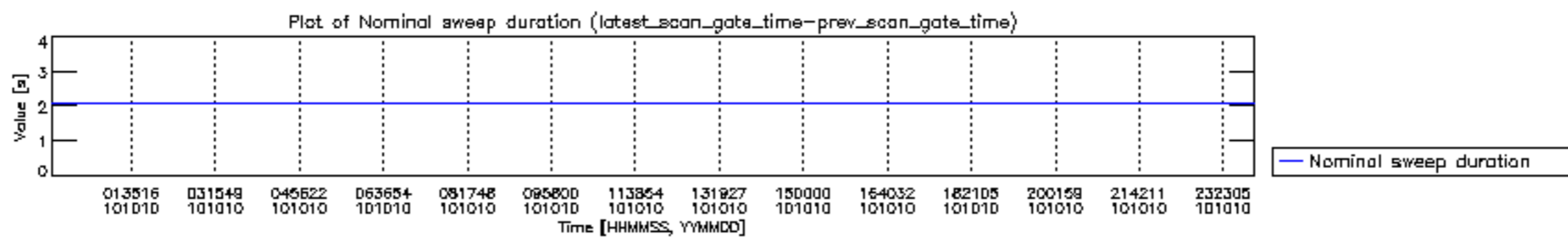
mipas_daily_report_level0__any_version__20101010_13.PNG

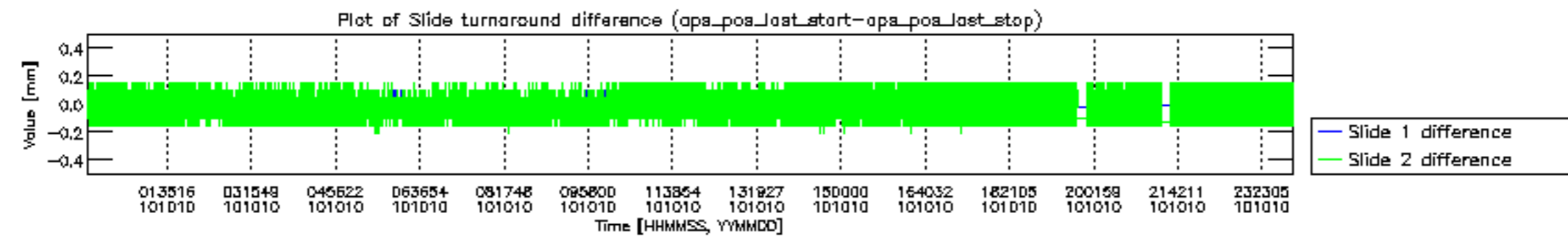


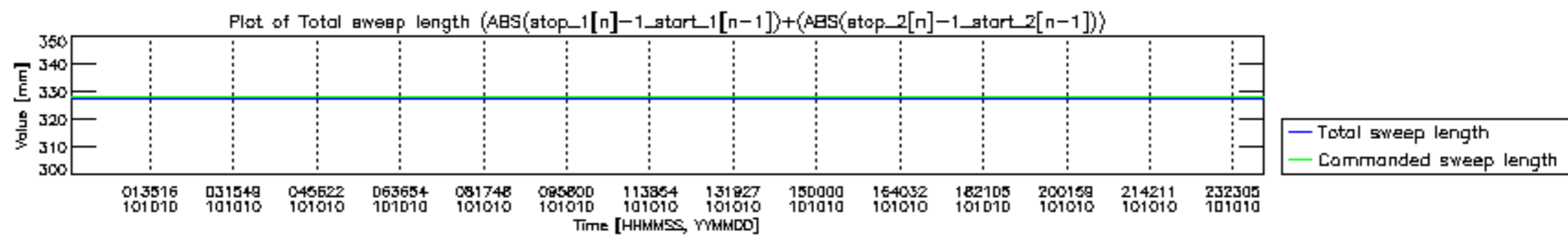


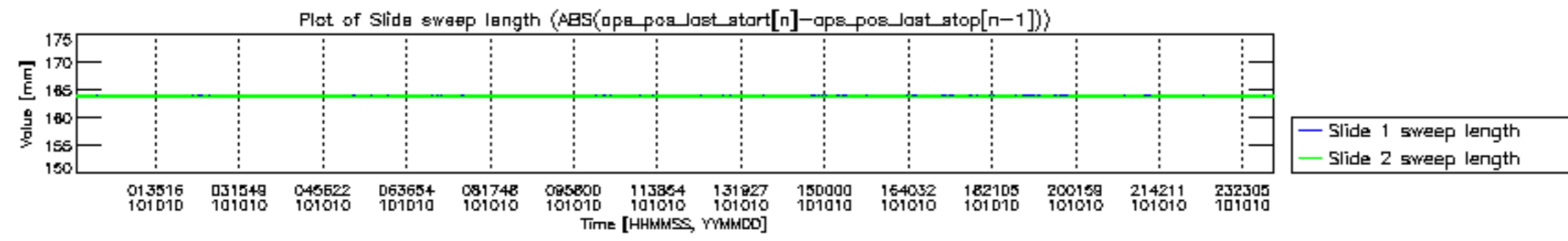


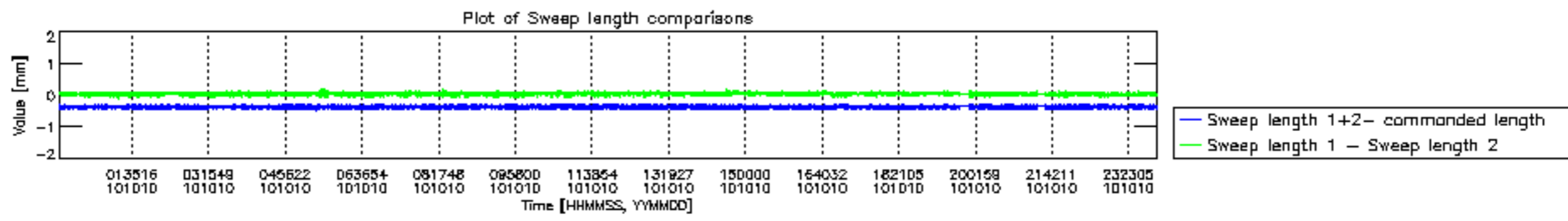


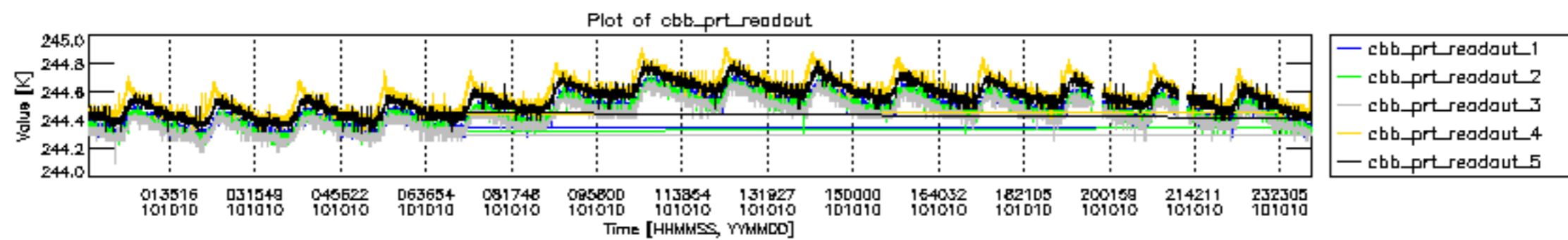


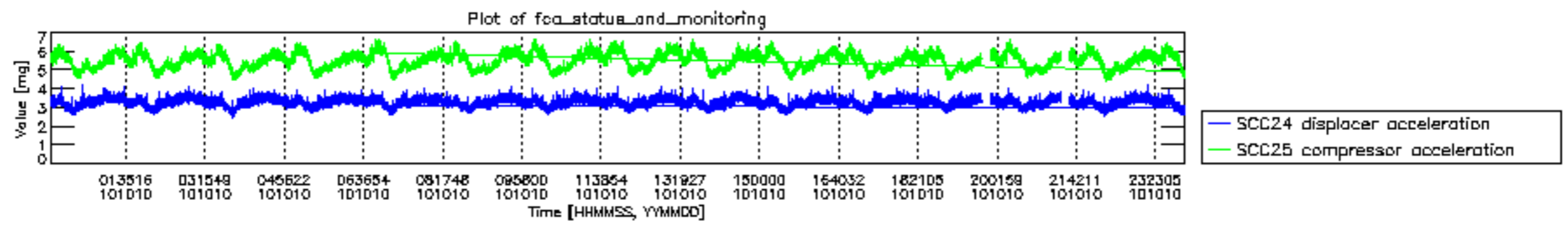












MIPNLOP_MIPSOUPAC_aux_fields_igm_cal, channel statistics plot
 Colour indicates value.

