

## 0. MIPAS Daily Report for level 0 products

### [0.1 General Info](#)

### [0.2 Instrument Operational Performance Parameters](#)

### [0.3 ADF monitoring](#)

## 0.1 General Info

This report contains a daily analysis on parameters extracted from MIPAS level 0 data (The MIP\_NL\_\_0P product).

### 0.1.1 Report summary

The table below shows general characteristics of the data that are included into this report.

Item	Value
Report version	v1.5 2008-02-08
Time of report generation	14OCT2010 05:22:34
Data source version	<any version>
Processing scope for products	09OCT2010 00:00:00 to 10OCT2010 00:00:00
Start time of first product within scope	09OCT2010 01:21:29
Stop time of last product within scope	09OCT2010 20:18:21
Total number of level 0 products	15
Number of level 0 products with errors	0

### 0.1.2 Product Quality Indicators per product

The following table shows a summary for each product used in this report.

#	Product name	Start time	Stop time	Prod err	ISP err sign	ISP miss sign	ISP disc sign	rs sign
0	MIP_NL__0PNPDE20101009_012129_000044142093_00360_45003_2994.N1	09OCT2010 01:21:29	09OCT2010 02:35:03	0	0	0	0	0
1	MIP_NL__0PNPDE20101009_023430_000061332093_00361_45004_2995.N1	09OCT2010 02:34:30	09OCT2010 04:16:43	0	0	0	0	0
2	MIP_NL__0PNPDE20101009_041608_000060812093_00362_45005_2996.N1	09OCT2010 04:16:08	09OCT2010 05:57:29	0	0	0	0	0
3	MIP_NL__0PNPDE20101009_201655_000042952093_00372_45015_2997.N1	09OCT2010 20:16:55	09OCT2010 21:28:30	0	0	0	0	0
4	MIP_NL__0PNPDE20101009_212721_000062022093_00372_45015_2998.N1	09OCT2010 21:27:21	09OCT2010 23:10:44	0	0	0	0	0
5	MIP_NL__0PNPDE20101009_230941_000061312093_00373_45016_2999.N1	09OCT2010 23:09:41	10OCT2010 00:51:52	0	0	0	0	0
6	MIP_NL__0PNPDK20101009_055656_000041092093_00363_45006_3065.N1	09OCT2010 05:56:56	09OCT2010 07:05:25	0	0	0	0	0
7	MIP_NL__0PNPDK20101009_070430_000062072093_00364_45007_3066.N1	09OCT2010 07:04:30	09OCT2010 08:47:57	0	0	0	0	0
8	MIP_NL__0PNPDK20101009_084713_000058602093_00365_45008_3067.N1	09OCT2010 08:47:13	09OCT2010 10:24:53	0	0	0	0	0
9	MIP_NL__0PNPDK20101009_102317_000062172093_00366_45009_3068.N1	09OCT2010 10:23:17	09OCT2010 12:06:54	0	0	0	0	0
10	MIP_NL__0PNPDK20101009_120555_000059732093_00367_45010_3069.N1	09OCT2010 12:05:55	09OCT2010 13:45:28	0	0	0	0	0
11	MIP_NL__0PNPDK20101009_134432_000059102093_00368_45011_3070.N1	09OCT2010 13:44:32	09OCT2010 15:23:01	0	0	0	0	0
12	MIP_NL__0PNPDK20101009_152121_000059042093_00369_45012_3071.N1	09OCT2010 15:21:21	09OCT2010 16:59:45	0	0	0	0	0
13	MIP_NL__0PNPDK20101009_165840_000059482093_00370_45013_3072.N1	09OCT2010 16:58:40	09OCT2010 18:37:48	0	0	0	0	0
14	MIP_NL__0PNPDK20101009_183647_000060942093_00371_45014_3073.N1	09OCT2010 18:36:47	09OCT2010 20:18:21	0	0	0	0	0

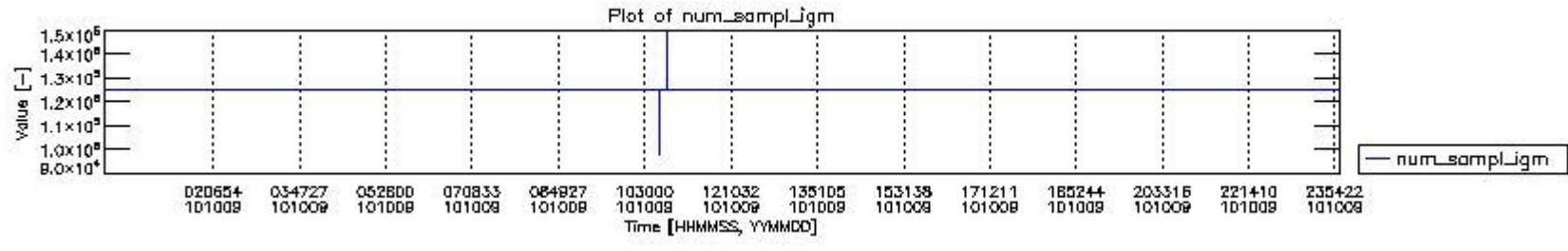
## 0.2 Instrument Operational Performance Parameters

The following plots give an overview of various instrument parameters for this day. The instrument parameters are part of the auxiliary data field within the source packets of the MIP\_NL\_\_0P product. The auxiliary data is normally included twice per interferogram. Note that only the first packet is currently included in monitoring.

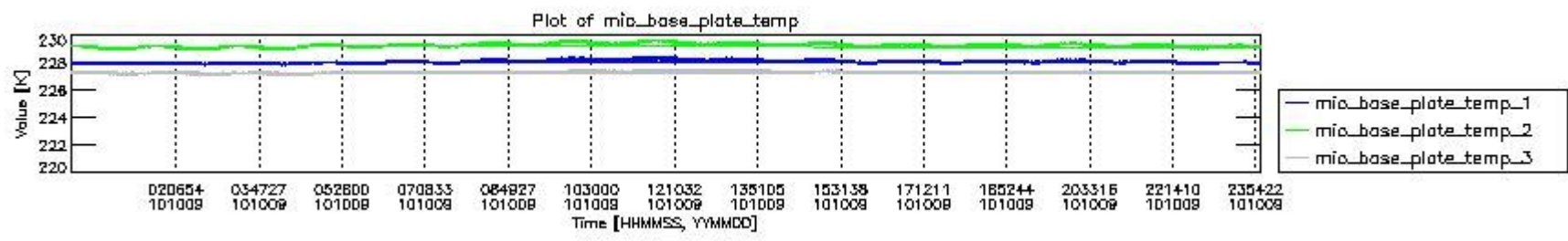
The following table shows the counts of various interferogram number of samples

Number of igm samples	Count [#]	Count [%]
98354	1	0.0024144675
101511	1	0.0024144675
121643	1	0.0024144675

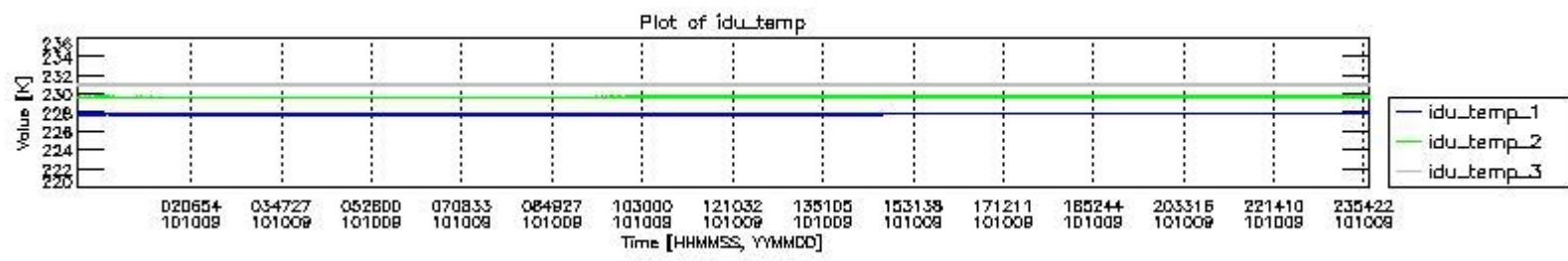
124800	38469	92.882150
124803	2942	7.1033634
127010	1	0.0024144675
147142	1	0.0024144675
149352	1	0.0024144675



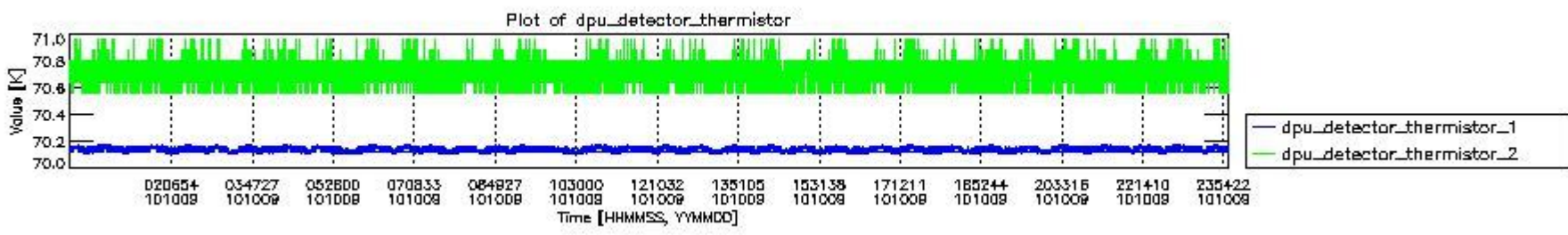
mipas\_daily\_report\_level0\_any\_version\_20101009\_0.PNG



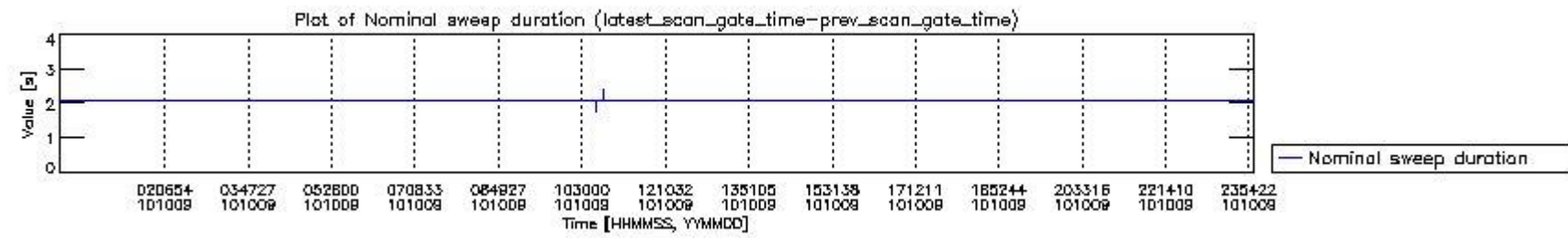
mipas\_daily\_report\_level0\_any\_version\_20101009\_1.PNG



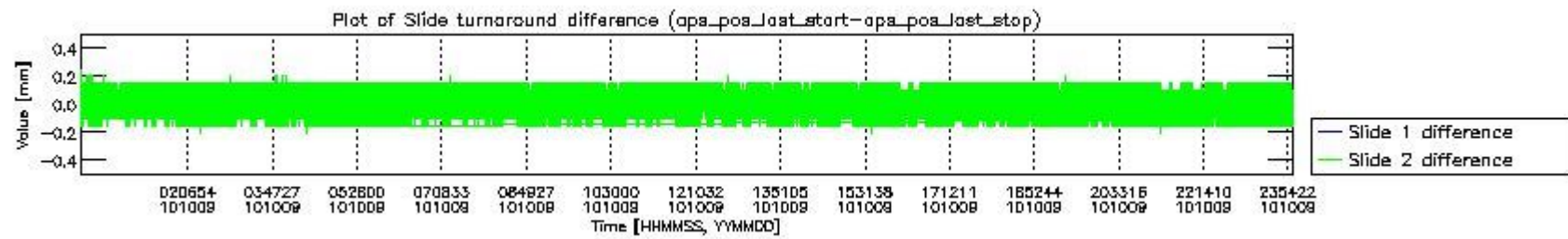
mipas\_daily\_report\_level0\_any\_version\_20101009\_2.PNG



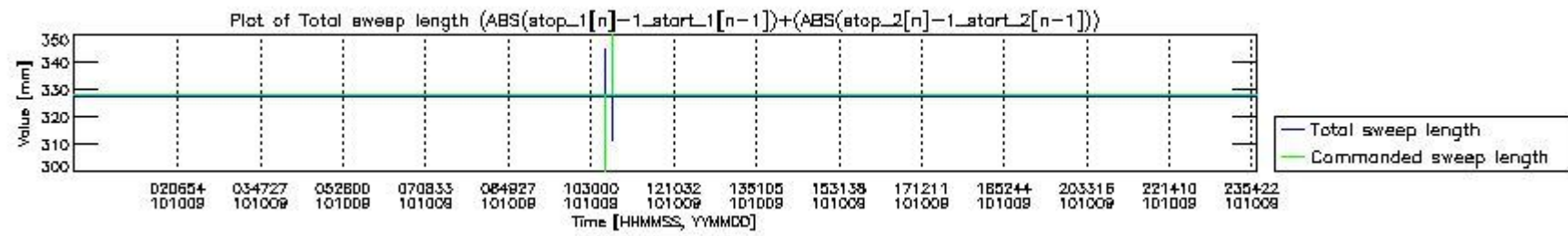
mipas\_daily\_report\_level0\_any\_version\_20101009\_3.PNG



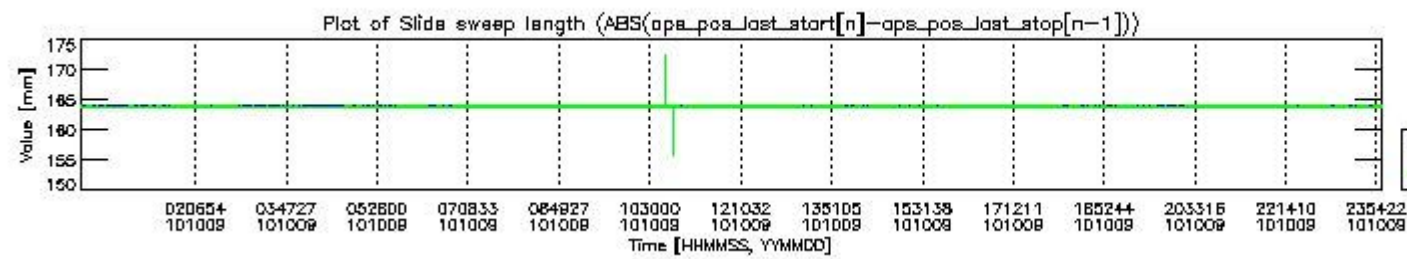
mipas\_daily\_report\_level0\_any\_version\_20101009\_4.PNG



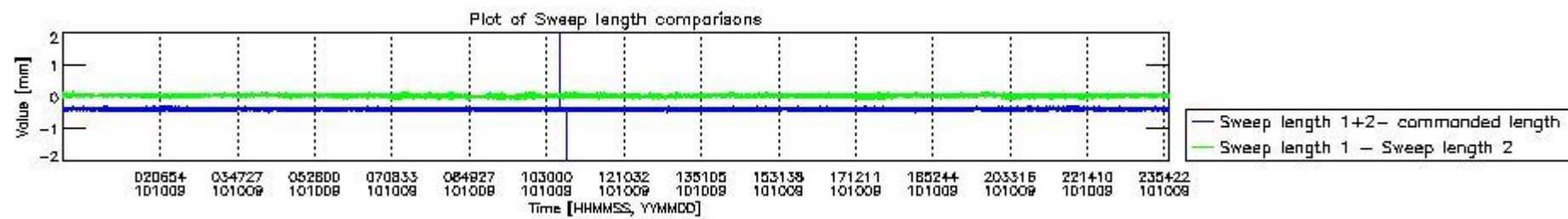
mipas\_daily\_report\_level0\_any\_version\_20101009\_5.PNG



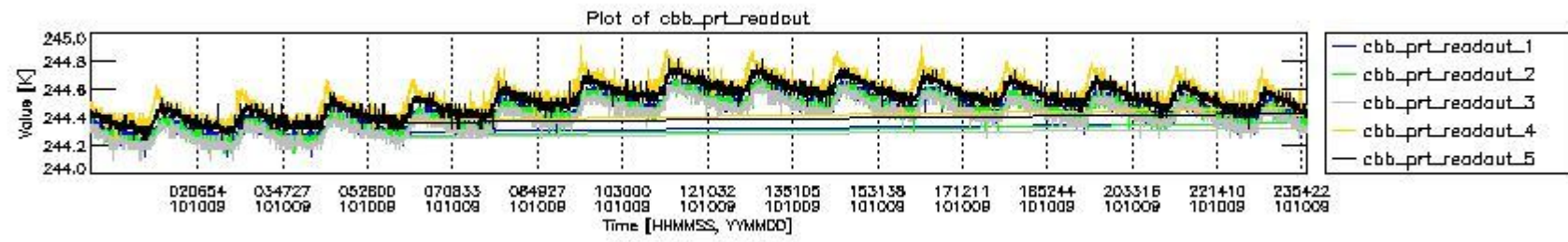
mipas\_daily\_report\_level0\_any\_version\_20101009\_6.PNG



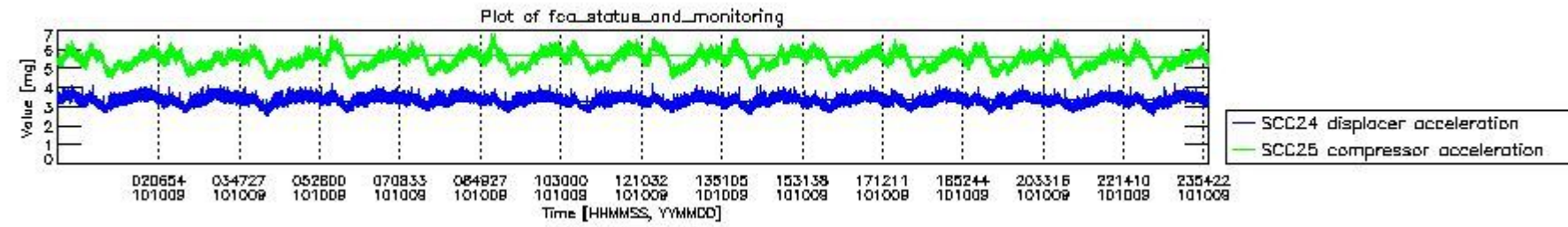
mipas\_daily\_report\_level0\_any\_version\_20101009\_7.PNG



mipas\_daily\_report\_level0\_any\_version\_20101009\_8.PNG



mipas\_daily\_report\_level0\_any\_version\_20101009\_9.PNG



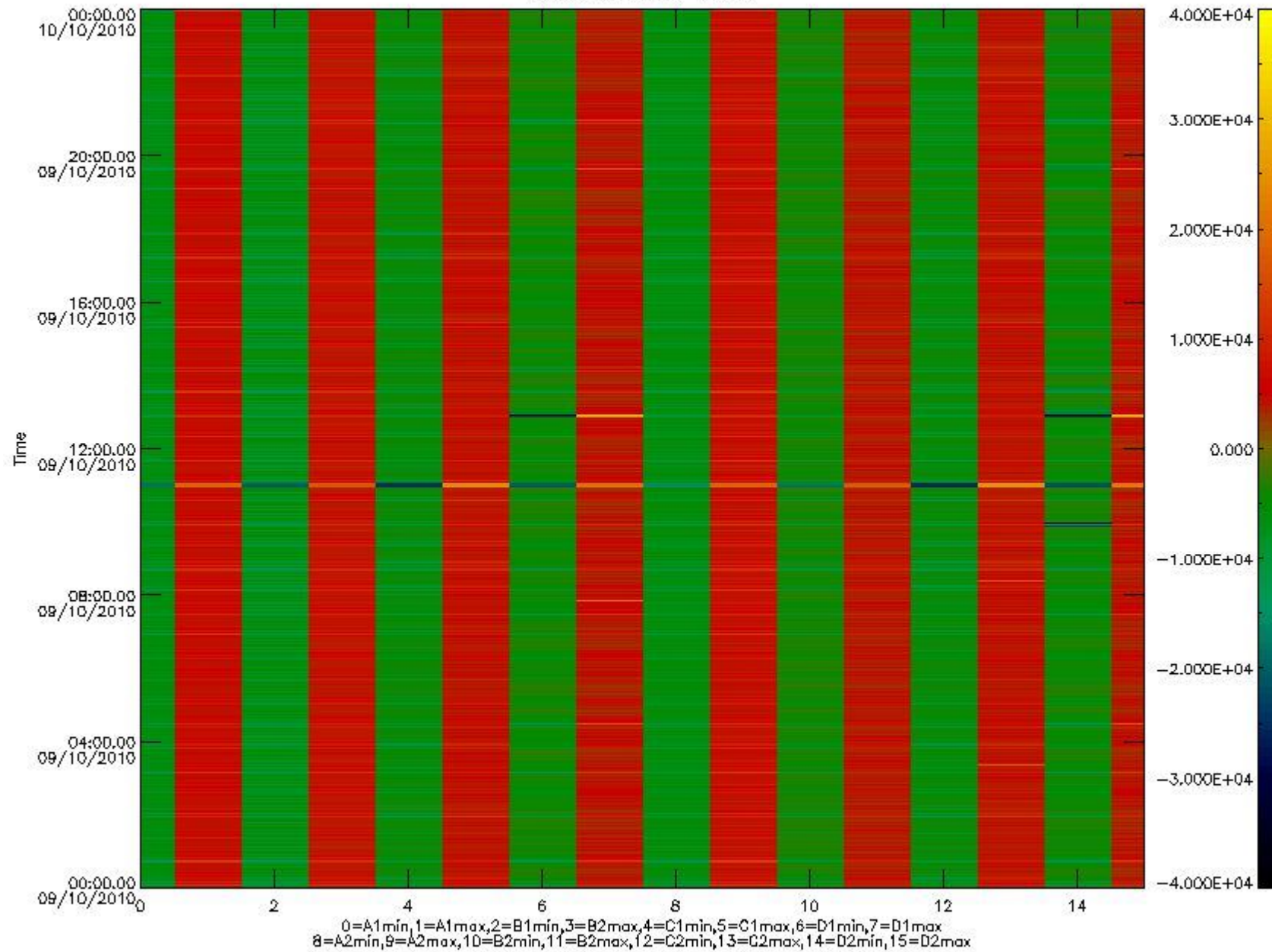
mipas\_daily\_report\_level0\_any\_version\_20101009\_10.PNG

The following table shows channel statistics for all channels for this day.

Channel	Min	Max	ADC
A1	-18015	19086	16bit
B1	-20429	17576	16bit
C1	-24632	24513	16bit
D1	-32768	32767	16bit
A2	-15685	19343	16bit
B2	-18247	17926	16bit
C2	-25550	25221	16bit
D2	-32768	32767	16bit



MIPNL0P\_MIPSOUPAC\_aux\_fields\_igm\_cal, channel statistics plot  
Colour indicates value.



mipas\_daily\_report\_level0\_any\_version\_20101009\_11.PNG

### 0.3 ADF monitoring

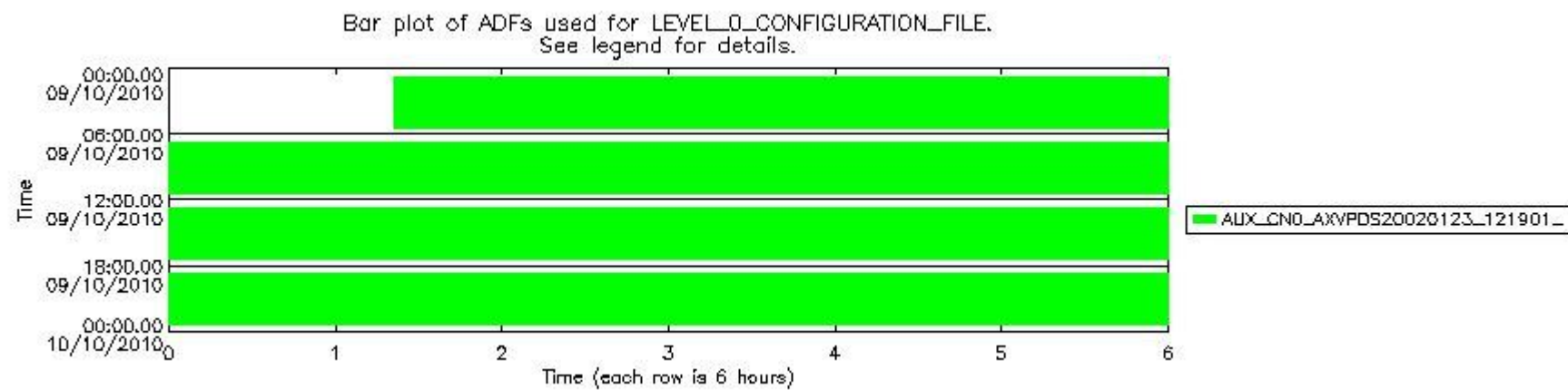
The use of ADFs is shown in two ways:

1. By means of two tables that can be used to find the ADF used for a specific product.
2. By means of plots that show changes in ADF using colours.

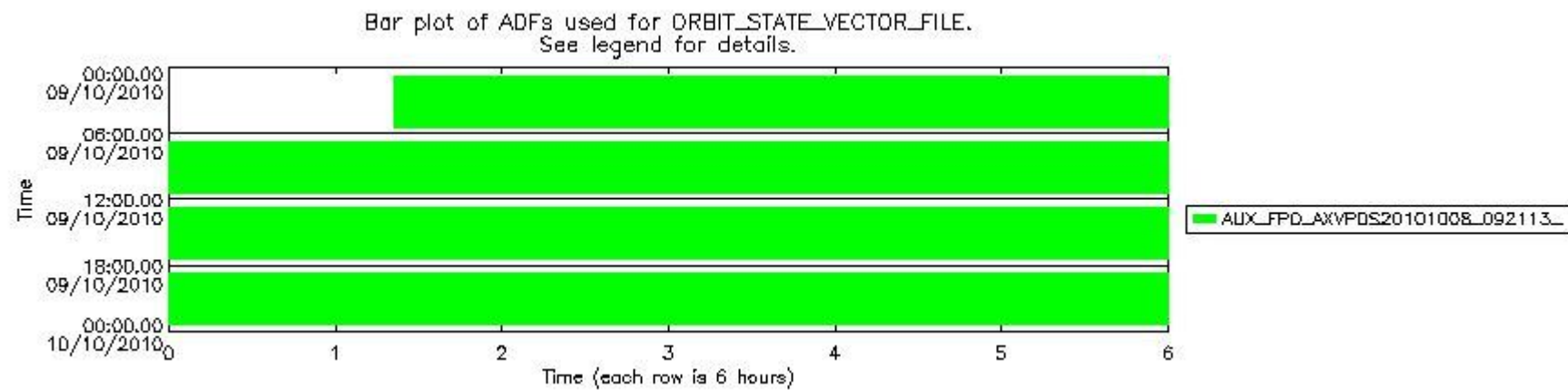
Number	ADF
0	AUX_CN0_AXVPDS20020123_121901_20020101_000000_20200101_000000
1	AUX_FPO_AXVPDS20101008_092113_20101007_192405_20101017_205016

Number	Product name	#CN0	#FPO
0	MIP_NL_0PNPDE20101009_012129_000044142093_00360_45003_2994.N1	0	1

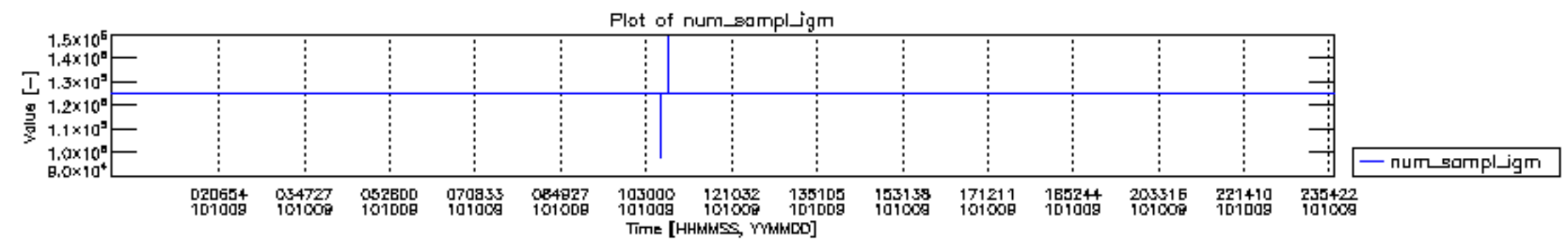
1	MIP_NL__0PNPDE20101009_023430_000061332093_00361_45004_2995.N1	0	1
2	MIP_NL__0PNPDE20101009_041608_000060812093_00362_45005_2996.N1	0	1
3	MIP_NL__0PNPDE20101009_201655_000042952093_00372_45015_2997.N1	0	1
4	MIP_NL__0PNPDE20101009_212721_000062022093_00372_45015_2998.N1	0	1
5	MIP_NL__0PNPDE20101009_230941_000061312093_00373_45016_2999.N1	0	1
6	MIP_NL__0PNPDK20101009_055656_000041092093_00363_45006_3065.N1	0	1
7	MIP_NL__0PNPDK20101009_070430_000062072093_00364_45007_3066.N1	0	1
8	MIP_NL__0PNPDK20101009_084713_000058602093_00365_45008_3067.N1	0	1
9	MIP_NL__0PNPDK20101009_102317_000062172093_00366_45009_3068.N1	0	1
10	MIP_NL__0PNPDK20101009_120555_000059732093_00367_45010_3069.N1	0	1
11	MIP_NL__0PNPDK20101009_134432_000059102093_00368_45011_3070.N1	0	1
12	MIP_NL__0PNPDK20101009_152121_000059042093_00369_45012_3071.N1	0	1
13	MIP_NL__0PNPDK20101009_165840_000059482093_00370_45013_3072.N1	0	1
14	MIP_NL__0PNPDK20101009_183647_000060942093_00371_45014_3073.N1	0	1

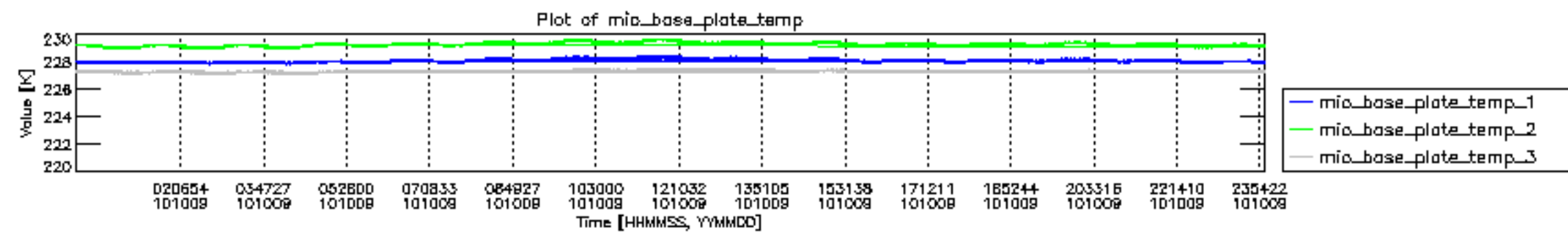


mipas\_daily\_report\_level0\_\_any\_version\_\_20101009\_12.PNG

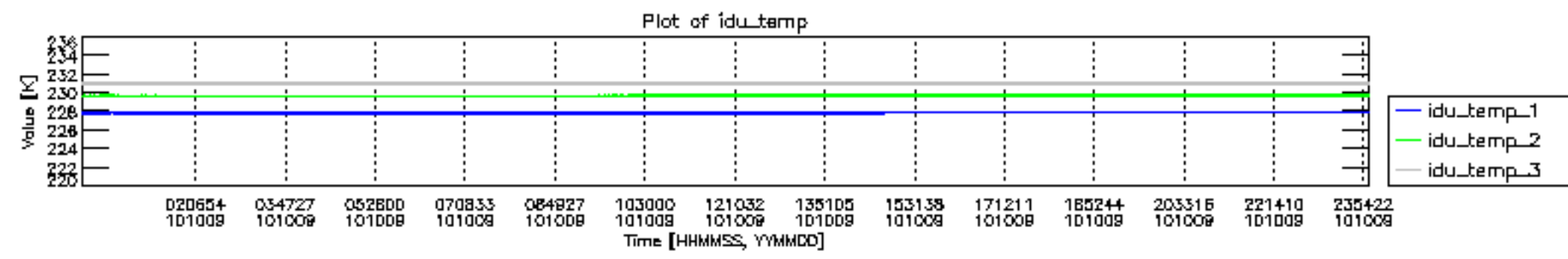


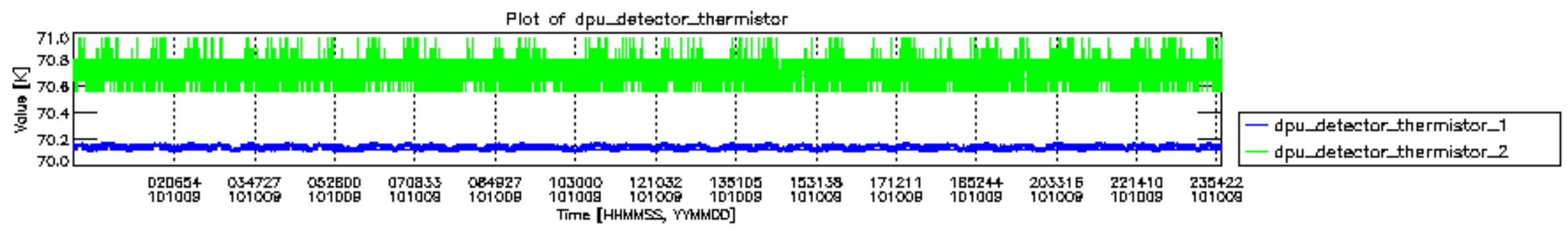
mipas\_daily\_report\_level0\_\_any\_version\_\_20101009\_13.PNG

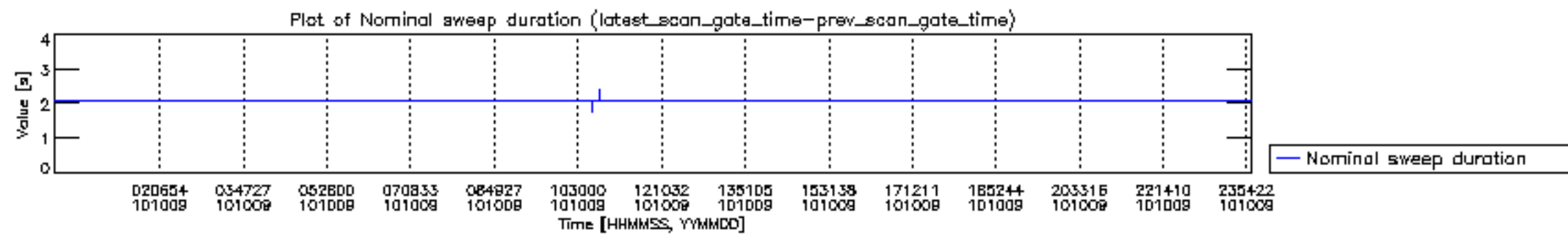


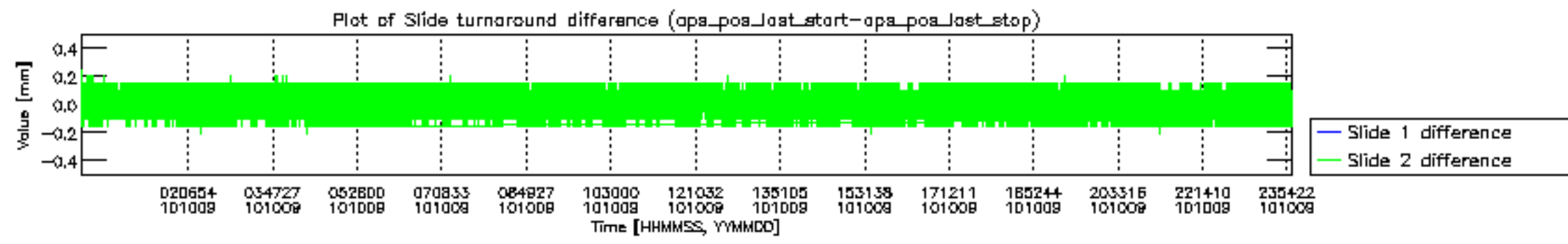


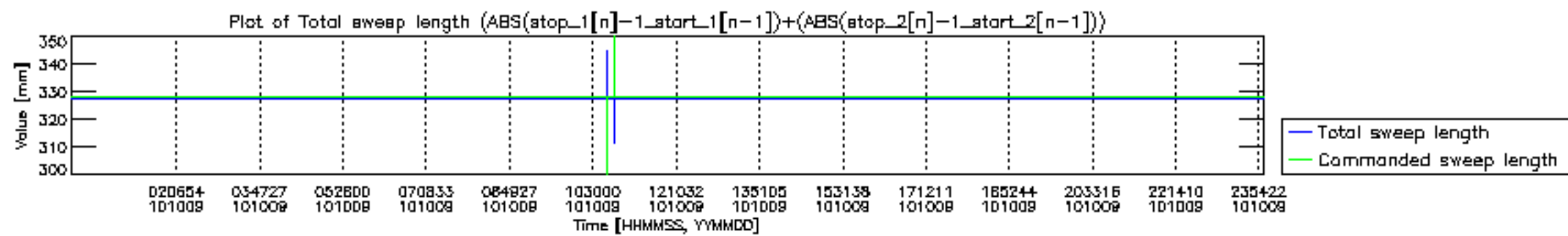




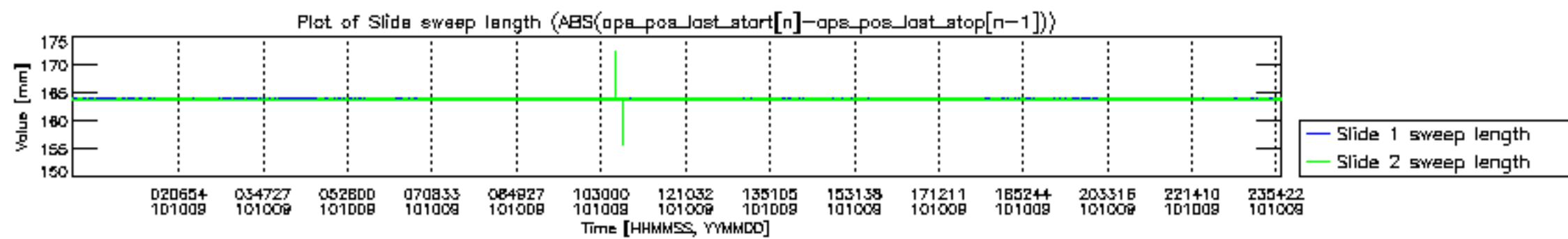


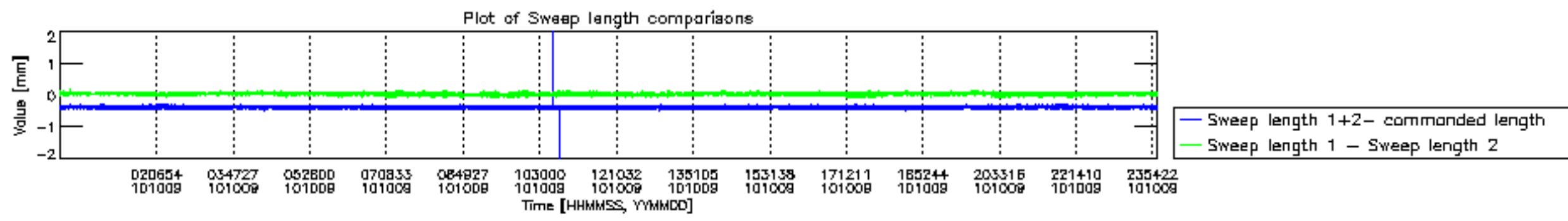


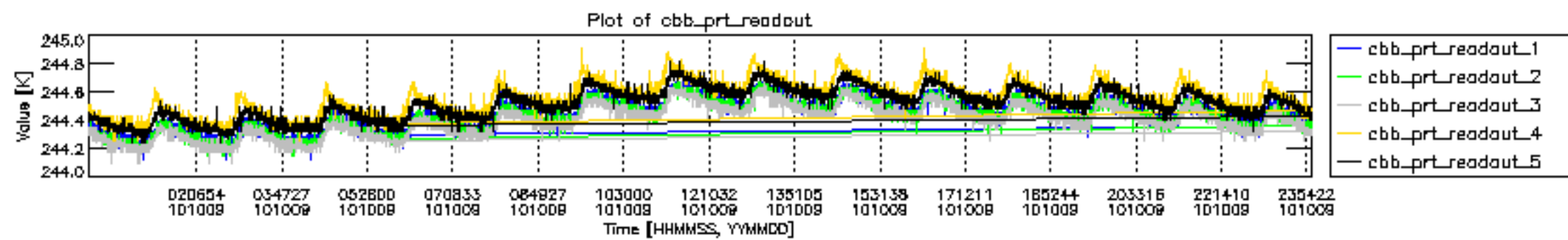


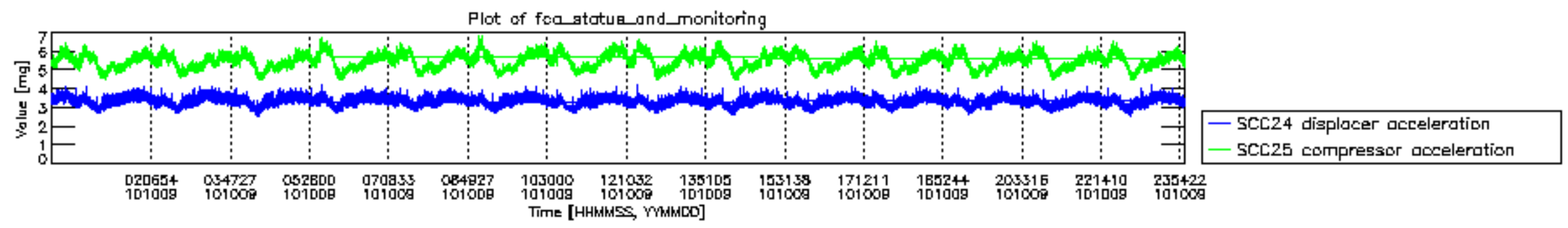












MIPNLOP\_MIPSOUPAC\_aux\_fields\_igm\_cal, channel statistics plot  
 Colour indicates value.

