

## 0. MIPAS Daily Report for level 0 products

### [0.1 General Info](#)

### [0.2 Instrument Operational Performance Parameters](#)

### [0.3 ADF monitoring](#)

## 0.1 General Info

This report contains a daily analysis on parameters extracted from MIPAS level 0 data (The MIP\_NL\_\_0P product).

### 0.1.1 Report summary

The table below shows general characteristics of the data that are included into this report.

Item	Value
Report version	v1.5 2008-02-08
Time of report generation	13OCT2010 05:23:12
Data source version	<any version>
Processing scope for products	08OCT2010 00:00:00 to 09OCT2010 00:00:00
Start time of first product within scope	08OCT2010 00:12:45
Stop time of last product within scope	08OCT2010 20:50:40
Total number of level 0 products	11
Number of level 0 products with errors	0

### 0.1.2 Product Quality Indicators per product

The following table shows a summary for each product used in this report.

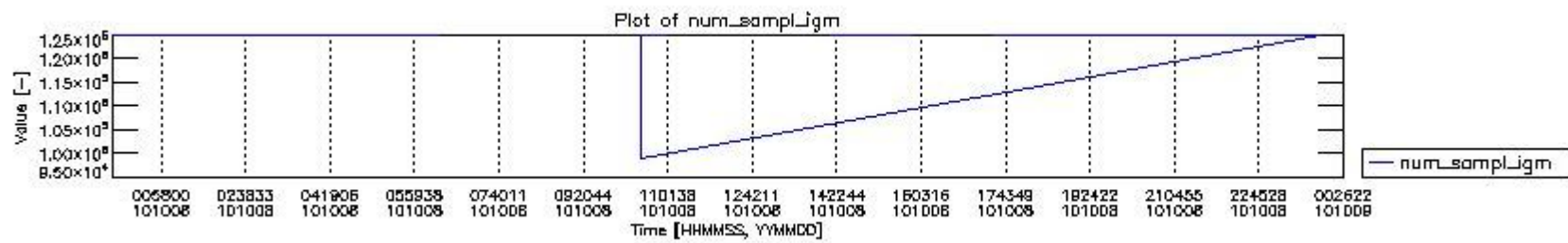
#	Product name	Start time	Stop time	Prod err	ISP err sign	ISP miss sign	ISP disc sign	rs sign
0	MIP_NL__0PNPDE20101008_001245_000059252093_00345_44988_2987.N1	08OCT2010 00:12:45	08OCT2010 01:51:30	0	0	0	0	0
1	MIP_NL__0PNPDE20101008_015017_000045752093_00346_44989_2988.N1	08OCT2010 01:50:17	08OCT2010 03:06:32	0	0	0	0	0
2	MIP_NL__0PNPDE20101008_030556_000061612093_00347_44990_2989.N1	08OCT2010 03:05:56	08OCT2010 04:48:37	0	0	0	0	0
3	MIP_NL__0PNPDE20101008_044804_000060292093_00348_44991_2990.N1	08OCT2010 04:48:04	08OCT2010 06:28:33	0	0	0	0	0
4	MIP_NL__0PNPDE20101008_204956_000042912093_00358_45001_2991.N1	08OCT2010 20:49:56	08OCT2010 22:01:27	0	0	0	0	0
5	MIP_NL__0PNPDE20101008_220029_000061632093_00358_45001_2992.N1	08OCT2010 22:00:29	08OCT2010 23:43:12	0	0	0	0	0
6	MIP_NL__0PNPDE20101008_234211_000060192093_00359_45002_2993.N1	08OCT2010 23:42:11	09OCT2010 01:22:30	0	0	0	0	0
7	MIP_NL__0PNPDK20101008_102940_000017022093_00352_44995_3058.N1	08OCT2010 10:29:40	08OCT2010 10:58:02	0	0	0	0	0
8	MIP_NL__0PNPDK20101008_141546_000057832093_00354_44997_3061.N1	08OCT2010 14:15:46	08OCT2010 15:52:08	0	0	0	0	0
9	MIP_NL__0PNPDK20101008_172854_000060692093_00356_44999_3063.N1	08OCT2010 17:28:54	08OCT2010 19:10:03	0	0	0	0	0
10	MIP_NL__0PNPDK20101008_190921_000060792093_00357_45000_3064.N1	08OCT2010 19:09:21	08OCT2010 20:50:40	0	0	0	0	0

## 0.2 Instrument Operational Performance Parameters

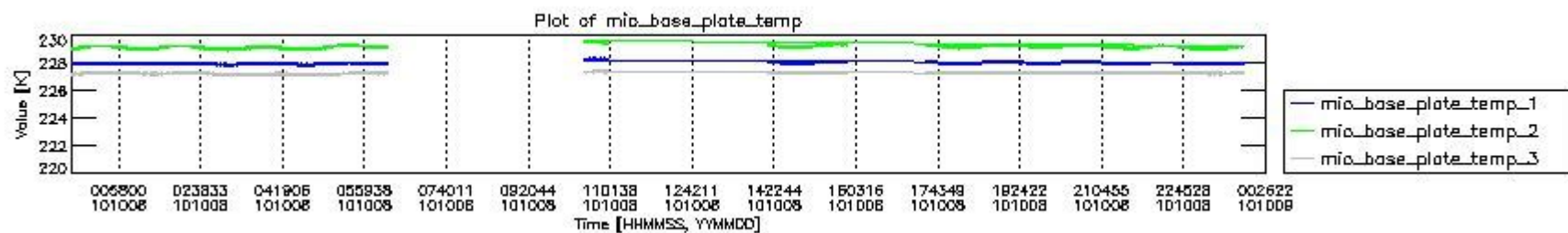
The following plots give an overview of various instrument parameters for this day. The instrument parameters are part of the auxiliary data field within the source packets of the MIP\_NL\_\_0P product. The auxiliary data is normally included twice per interferogram. Note that only the first packet is currently included in monitoring.

The following table shows the counts of various interferogram number of samples

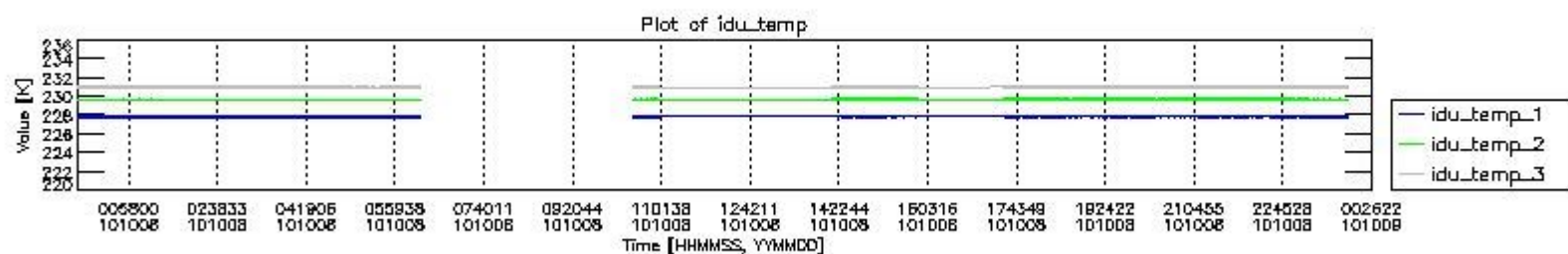
Number of igm samples	Count [#]	Count [%]
98847	1	0.0038423115
123398	1	0.0038423115
124099	1	0.0038423115
124800	24161	92.834089
124803	1862	7.1543841



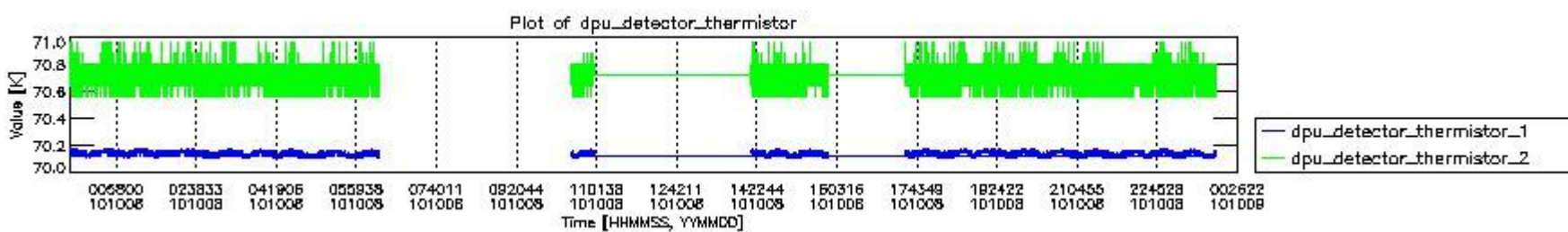
mipas\_daily\_report\_level0\_any\_version\_20101008\_0.PNG



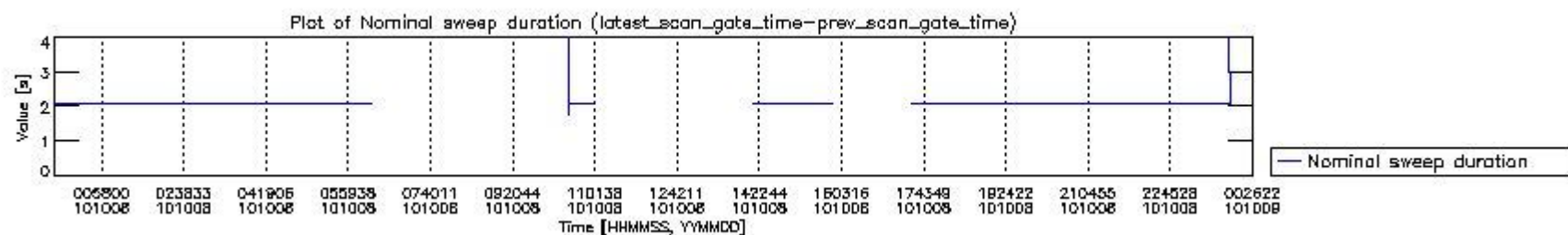
mipas\_daily\_report\_level0\_any\_version\_20101008\_1.PNG



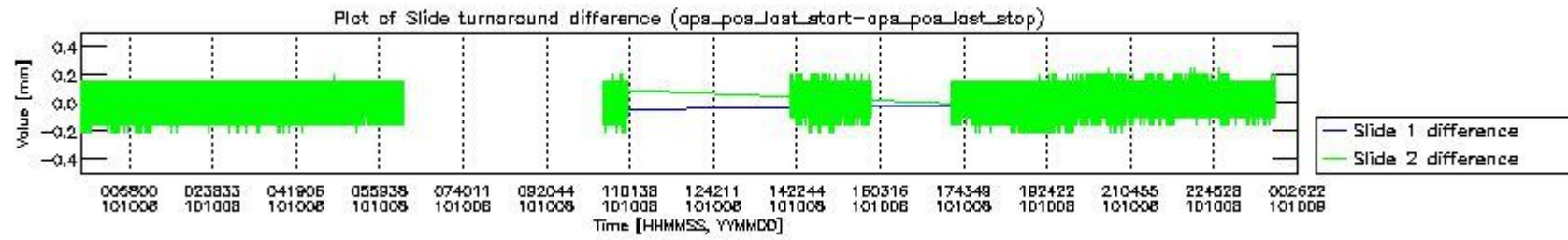
mipas\_daily\_report\_level0\_any\_version\_20101008\_2.PNG



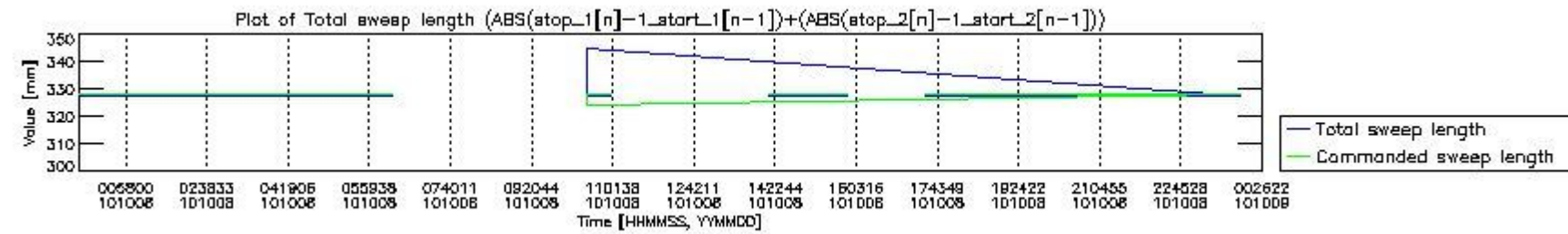
mipas\_daily\_report\_level0\_any\_version\_20101008\_3.PNG



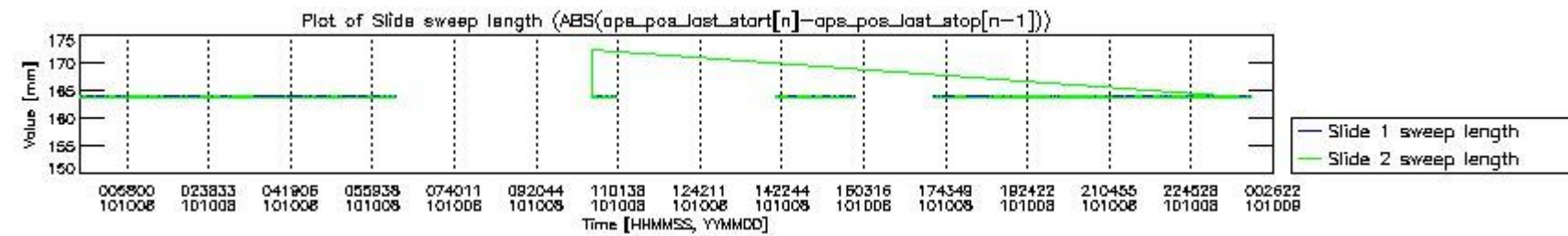
mipas\_daily\_report\_level0\_any\_version\_20101008\_4.PNG



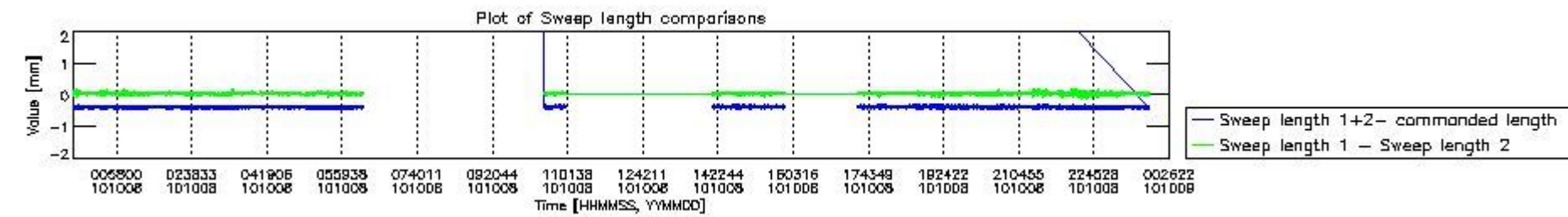
mipas\_daily\_report\_level0\_any\_version\_20101008\_5.PNG



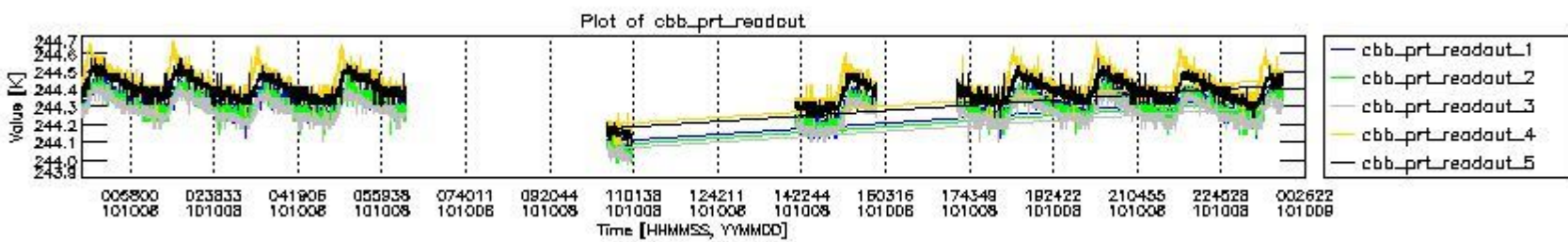
mipas\_daily\_report\_level0\_any\_version\_20101008\_6.PNG



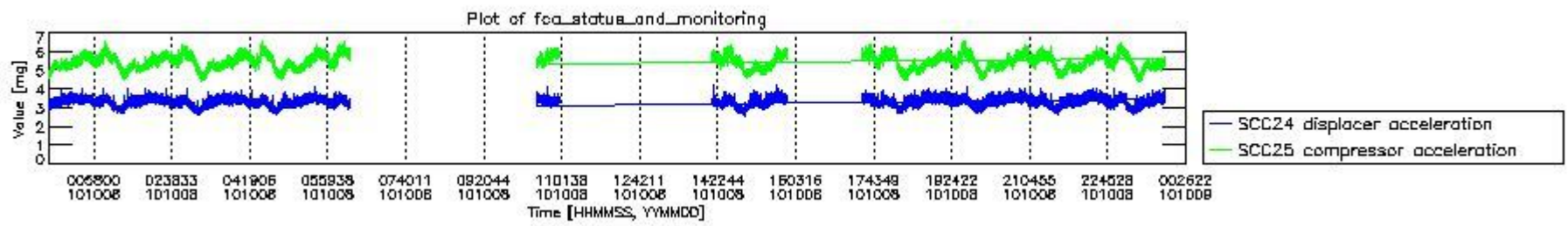
mipas\_daily\_report\_level0\_any\_version\_20101008\_7.PNG



mipas\_daily\_report\_level0\_any\_version\_20101008\_8.PNG



mipas\_daily\_report\_level0\_any\_version\_20101008\_9.PNG



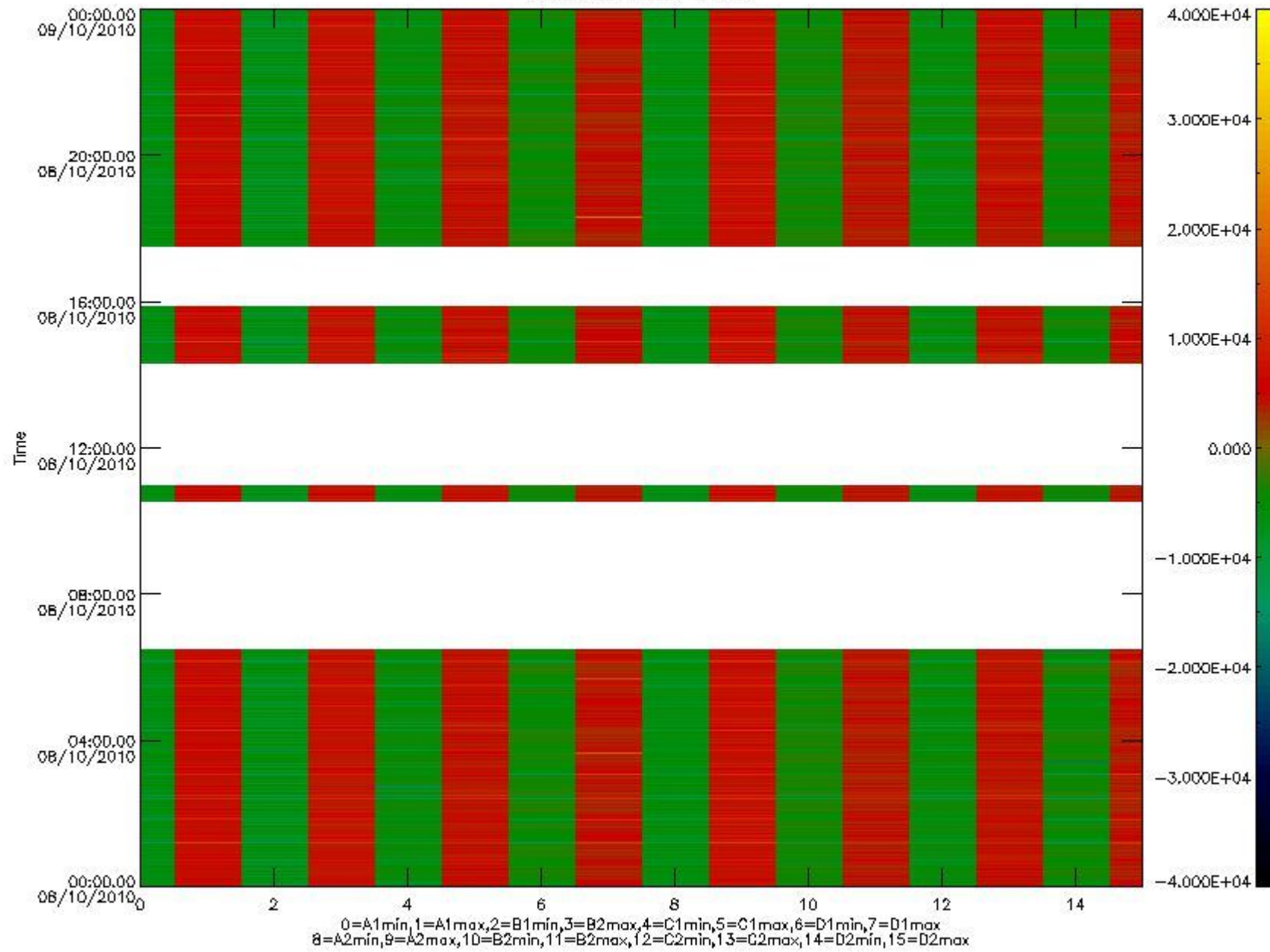
mipas\_daily\_report\_level0\_any\_version\_20101008\_10.PNG

The following table shows channel statistics for all channels for this day.

Channel	Min	Max	ADC
A1	-17359	18234	16bit
B1	-16844	14437	16bit
C1	-22338	15063	16bit
D1	-32768	32767	16bit
A2	-14700	17914	16bit
B2	-13024	12978	16bit
C2	-15598	19403	16bit
D2	-32768	32767	16bit



MIPNLOP\_MIPSOUPAC\_aux\_fields\_igm\_cal, channel statistics plot  
Colour indicates value.



mipas\_daily\_report\_level0\_any\_version\_20101008\_11.PNG

### 0.3 ADF monitoring

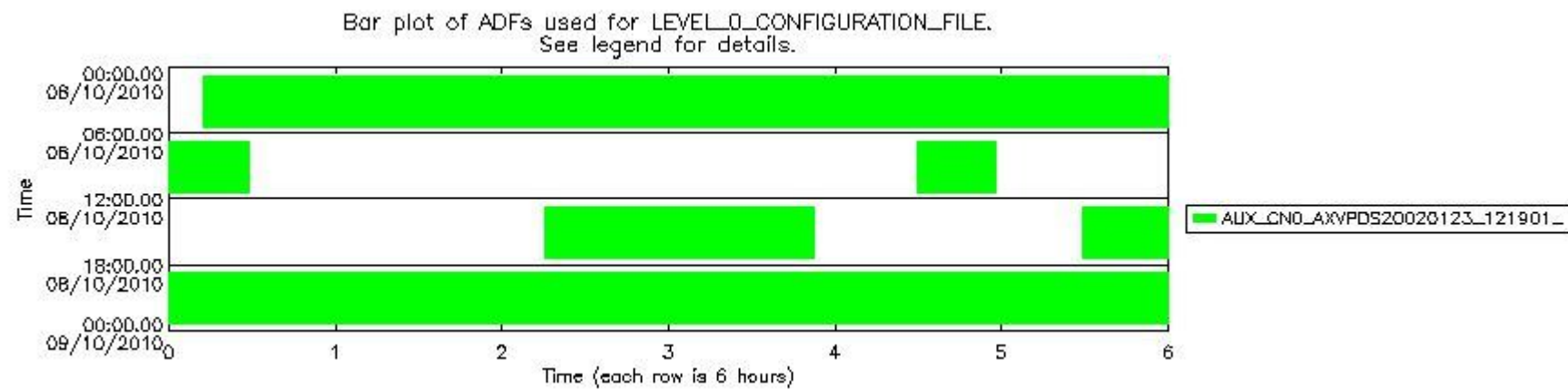
The use of ADFs is shown in two ways:

1. By means of two tables that can be used to find the ADF used for a specific product.
2. By means of plots that show changes in ADF using colours.

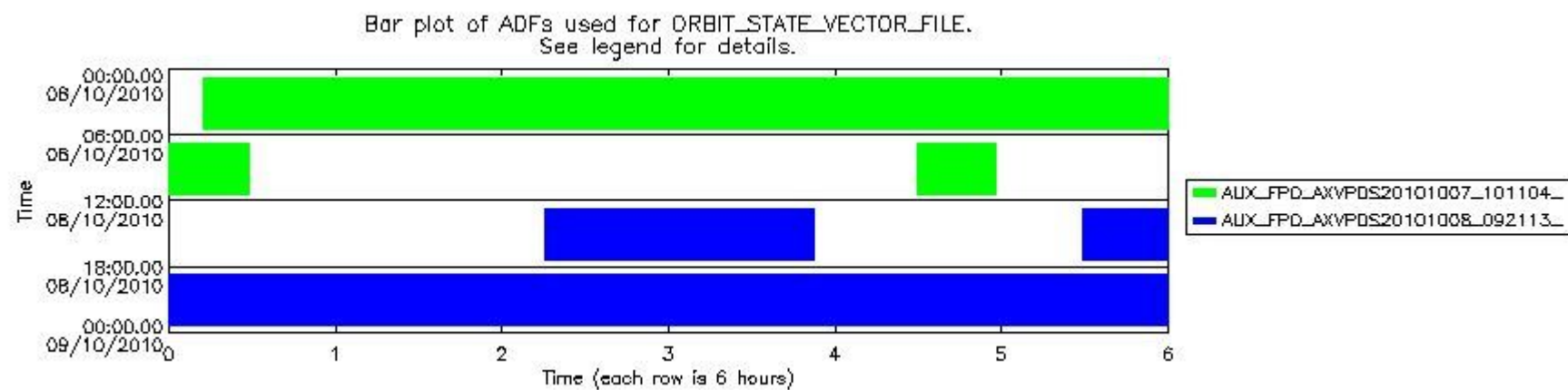
Number	ADF
0	AUX_CN0_AXVPDS20020123_121901_20020101_000000_20200101_000000
1	AUX_FPO_AXVPDS20101007_101104_20101006_195542_20101016_212153
2	AUX_FPO_AXVPDS20101008_092113_20101007_192405_20101017_205016

Number	Product name	#CN0	#FPO
--------	--------------	------	------

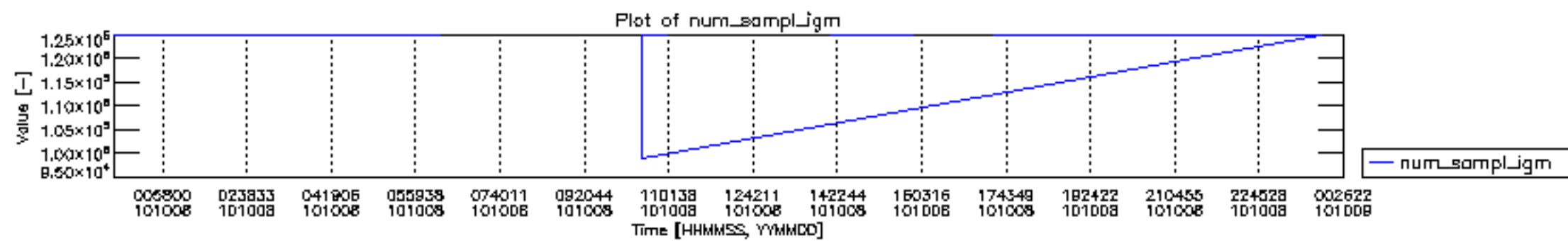
0	MIP_NL__0PNPDE20101008_001245_000059252093_00345_44988_2987.N1	0	1
1	MIP_NL__0PNPDE20101008_015017_000045752093_00346_44989_2988.N1	0	1
2	MIP_NL__0PNPDE20101008_030556_000061612093_00347_44990_2989.N1	0	1
3	MIP_NL__0PNPDE20101008_044804_000060292093_00348_44991_2990.N1	0	1
4	MIP_NL__0PNPDE20101008_204956_000042912093_00358_45001_2991.N1	0	2
5	MIP_NL__0PNPDE20101008_220029_000061632093_00358_45001_2992.N1	0	2
6	MIP_NL__0PNPDE20101008_234211_000060192093_00359_45002_2993.N1	0	2
7	MIP_NL__0PNPDK20101008_102940_000017022093_00352_44995_3058.N1	0	1
8	MIP_NL__0PNPDK20101008_141546_000057832093_00354_44997_3061.N1	0	2
9	MIP_NL__0PNPDK20101008_172854_000060692093_00356_44999_3063.N1	0	2
10	MIP_NL__0PNPDK20101008_190921_000060792093_00357_45000_3064.N1	0	2

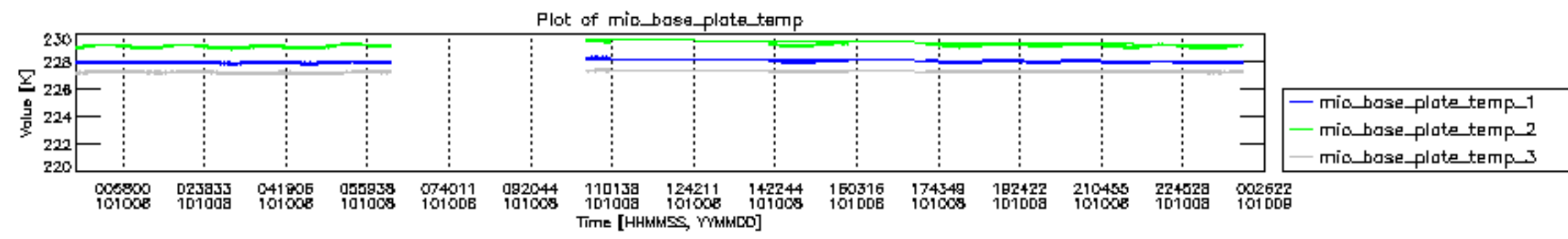


mipas\_daily\_report\_level0\_\_any\_version\_\_20101008\_12.PNG

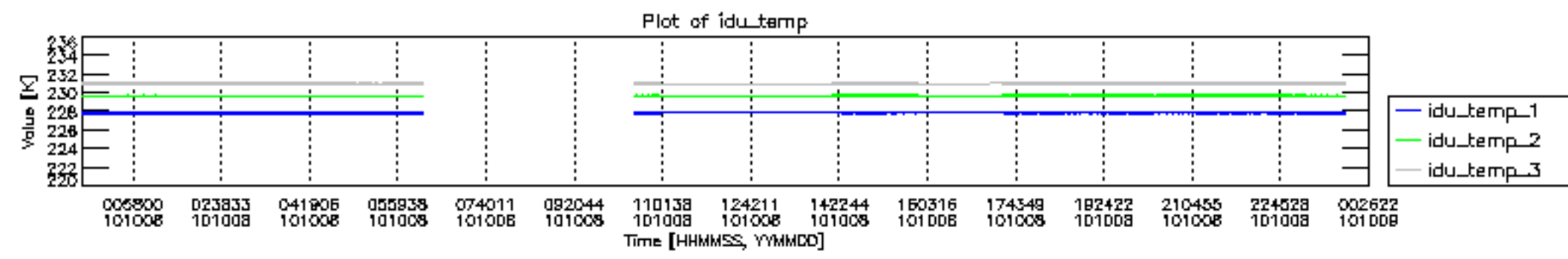


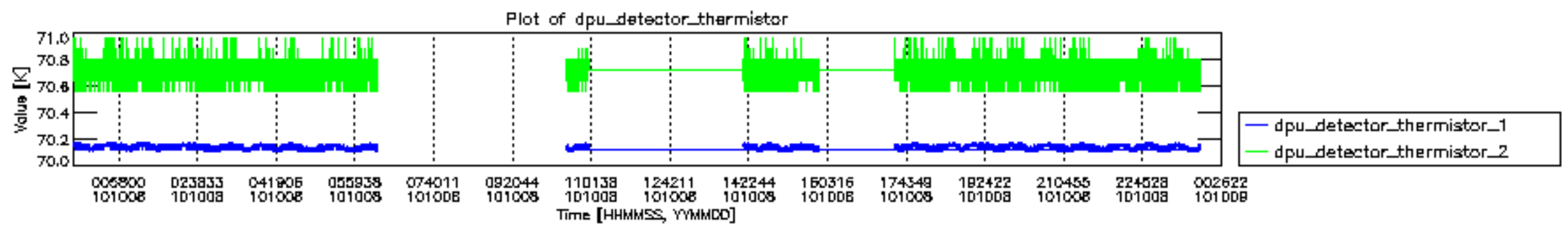
mipas\_daily\_report\_level0\_\_any\_version\_\_20101008\_13.PNG

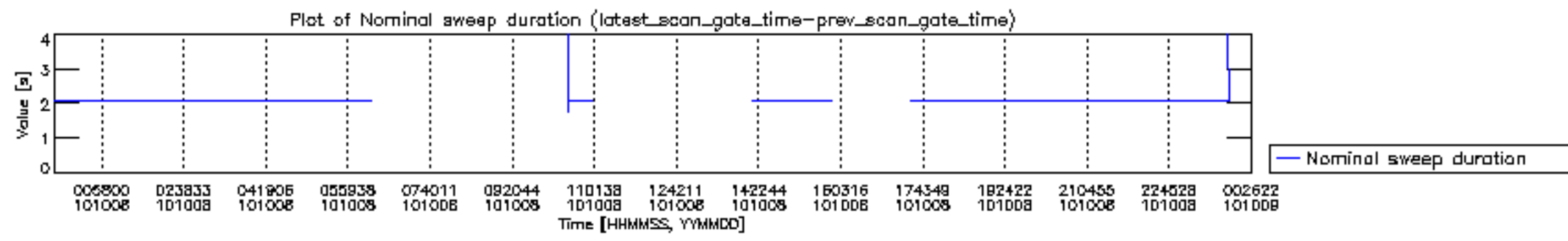


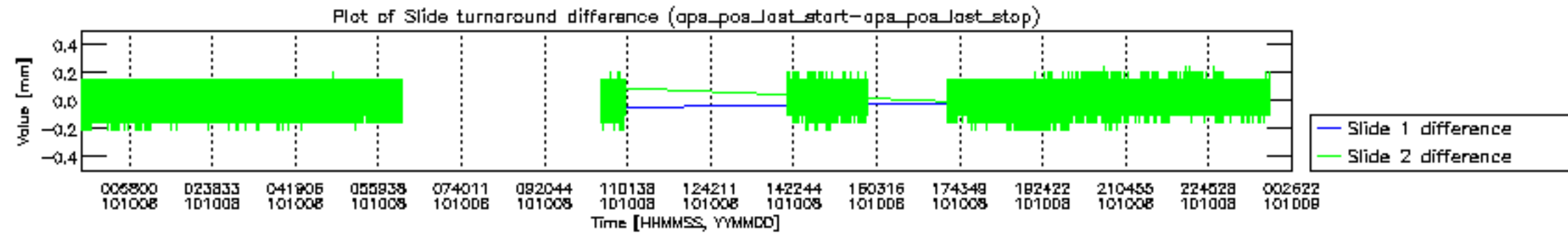


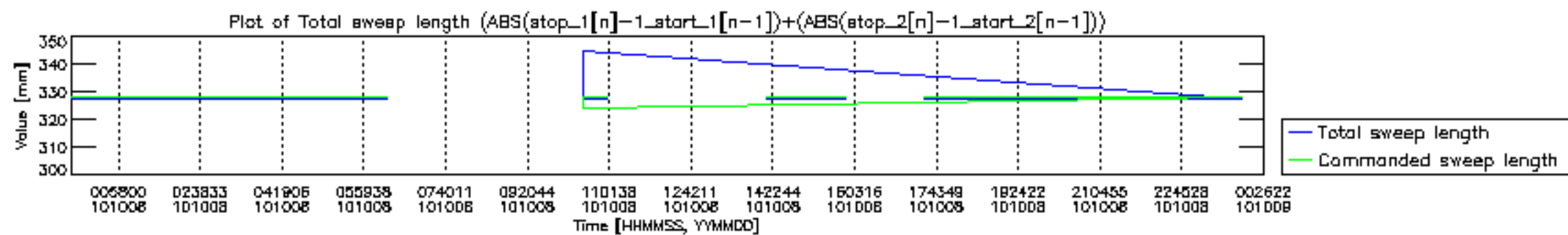




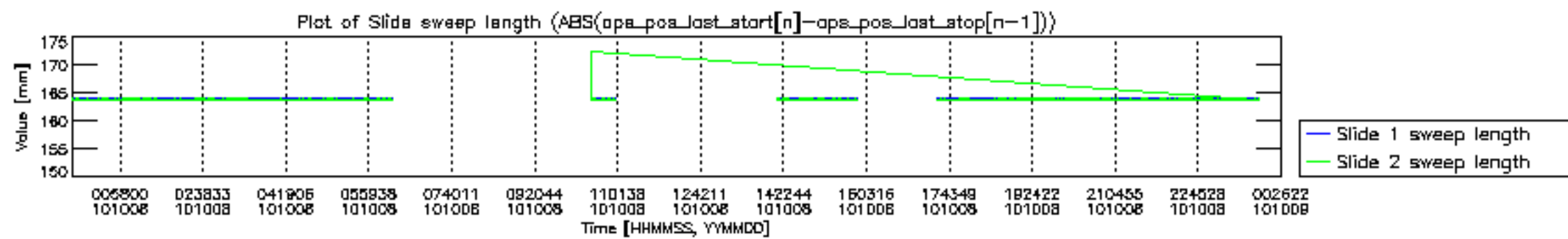


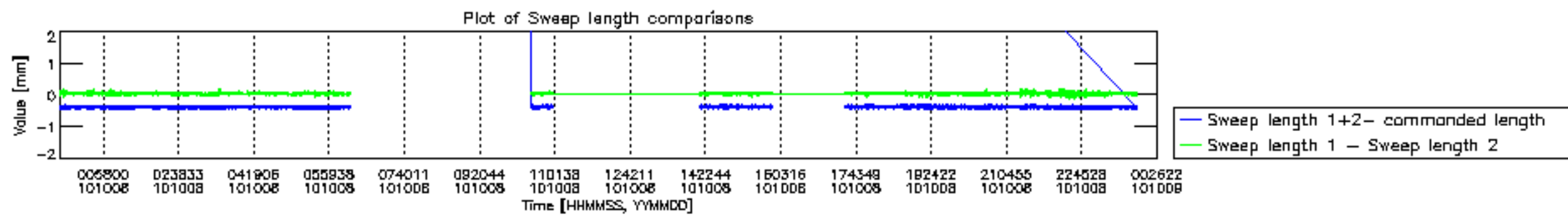


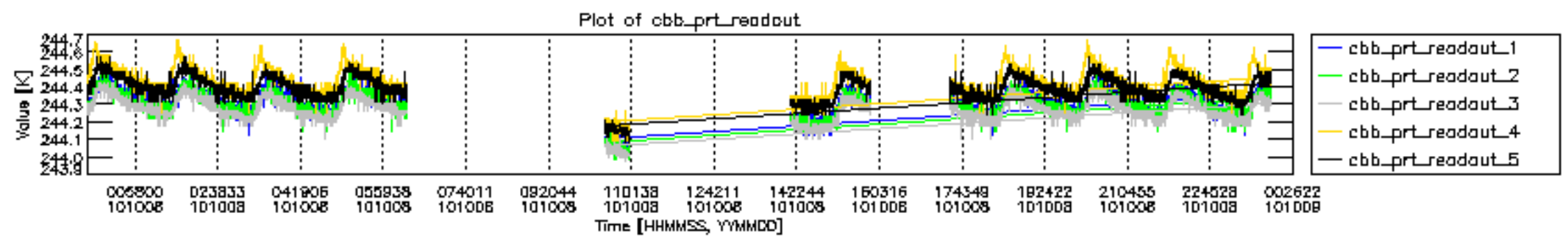


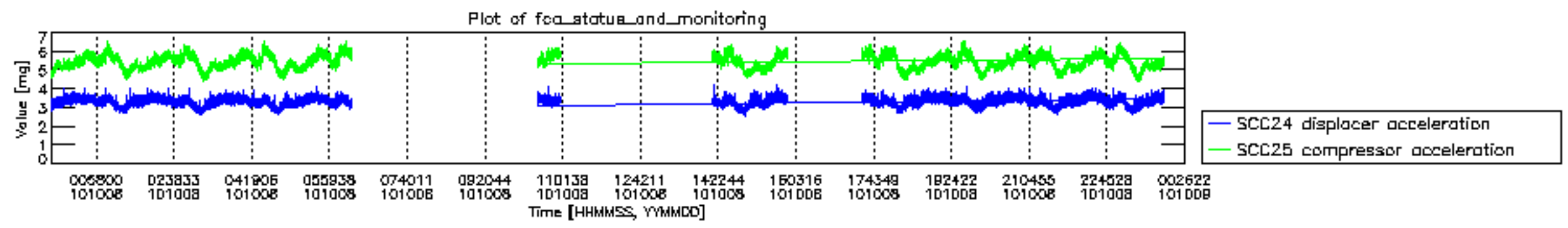












MIPNLOP\_MIPSOUPAC\_aux\_fields\_igm\_cal, channel statistics plot  
 Colour indicates value.

