

0. MIPAS Daily Report for level 0 products

[0.1 General Info](#)

[0.2 Instrument Operational Performance Parameters](#)

[0.3 ADF monitoring](#)

0.1 General Info

This report contains a daily analysis on parameters extracted from MIPAS level 0 data (The MIP_NL__0P product).

0.1.1 Report summary

The table below shows general characteristics of the data that are included into this report.

Item	Value
Report version	v1.5 2008-02-08
Time of report generation	12OCT2010 05:24:14
Data source version	<any version>
Processing scope for products	07OCT2010 00:00:00 to 08OCT2010 00:00:00
Start time of first product within scope	07OCT2010 00:45:48
Stop time of last product within scope	07OCT2010 19:40:54
Total number of level 0 products	16
Number of level 0 products with errors	0

0.1.2 Product Quality Indicators per product

The following table shows a summary for each product used in this report.

#	Product name	Start time	Stop time	Prod err	ISP err sign	ISP miss sign	ISP disc sign	rs sign
0	MIP_NL__OPNPDE20101007_004548_000009172093_00331_44974_2979.N1	07OCT2010 00:45:48	07OCT2010 01:01:04	0	0	0	0	0
1	MIP_NL__OPNPDE20101007_010512_000045622093_00332_44975_2980.N1	07OCT2010 01:05:12	07OCT2010 02:21:14	0	0	0	0	0
2	MIP_NL__OPNPDE20101007_021942_000047002093_00332_44975_2981.N1	07OCT2010 02:19:42	07OCT2010 03:38:02	0	0	0	0	0
3	MIP_NL__OPNPDE20101007_033729_000061712093_00333_44976_2982.N1	07OCT2010 03:37:29	07OCT2010 05:20:20	0	0	0	0	0
4	MIP_NL__OPNPDE20101007_051947_000060792093_00334_44977_2983.N1	07OCT2010 05:19:47	07OCT2010 07:01:06	0	0	0	0	0
5	MIP_NL__OPNPDE20101007_193934_000040742093_00343_44986_2984.N1	07OCT2010 19:39:34	07OCT2010 20:47:28	0	0	0	0	0
6	MIP_NL__OPNPDE20101007_204609_000065222093_00343_44986_2985.N1	07OCT2010 20:46:09	07OCT2010 22:34:51	0	0	0	0	0
7	MIP_NL__OPNPDE20101007_223346_000060022093_00344_44987_2986.N1	07OCT2010 22:33:46	08OCT2010 00:13:48	0	0	0	0	0
8	MIP_NL__OPNPDK20101007_070033_000039232093_00335_44978_3049.N1	07OCT2010 07:00:33	07OCT2010 08:05:56	0	0	0	0	0
9	MIP_NL__OPNPDK20101007_080418_000063432093_00336_44979_3050.N1	07OCT2010 08:04:18	07OCT2010 09:50:00	0	0	0	0	0
10	MIP_NL__OPNPDK20101007_094916_000059352093_00337_44980_3051.N1	07OCT2010 09:49:16	07OCT2010 11:28:11	0	0	0	0	0
11	MIP_NL__OPNPDK20101007_112637_000059832093_00338_44981_3052.N1	07OCT2010 11:26:37	07OCT2010 13:06:20	0	0	0	0	0
12	MIP_NL__OPNPDK20101007_130442_000061652093_00339_44982_3053.N1	07OCT2010 13:04:42	07OCT2010 14:47:27	0	0	0	0	0
13	MIP_NL__OPNPDK20101007_144628_000057702093_00340_44983_3054.N1	07OCT2010 14:46:28	07OCT2010 16:22:38	0	0	0	0	0
14	MIP_NL__OPNPDK20101007_162117_000060352093_00341_44984_3055.N1	07OCT2010 16:21:17	07OCT2010 18:01:52	0	0	0	0	0
15	MIP_NL__OPNPDK20101007_180056_000059982093_00342_44985_3056.N1	07OCT2010 18:00:56	07OCT2010 19:40:54	0	0	0	0	0

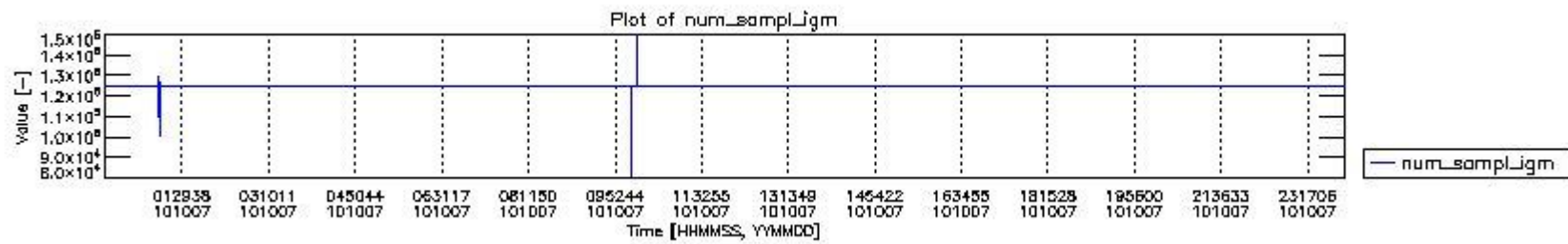
0.2 Instrument Operational Performance Parameters

The following plots give an overview of various instrument parameters for this day. The instrument parameters are part of the auxiliary data field within the source packets of the MIP_NL__0P product. The auxiliary data is normally included twice per interferogram. Note that only the first packet is currently included in monitoring.

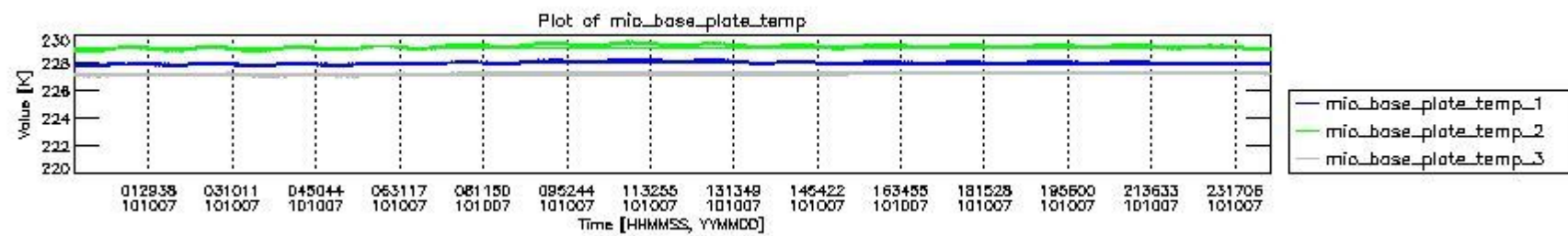
The following table shows the counts of various interferogram number of samples

Number of igm samples	Count [#]	Count [%]
80810	1	0.0024063335
92739	1	0.0024063335

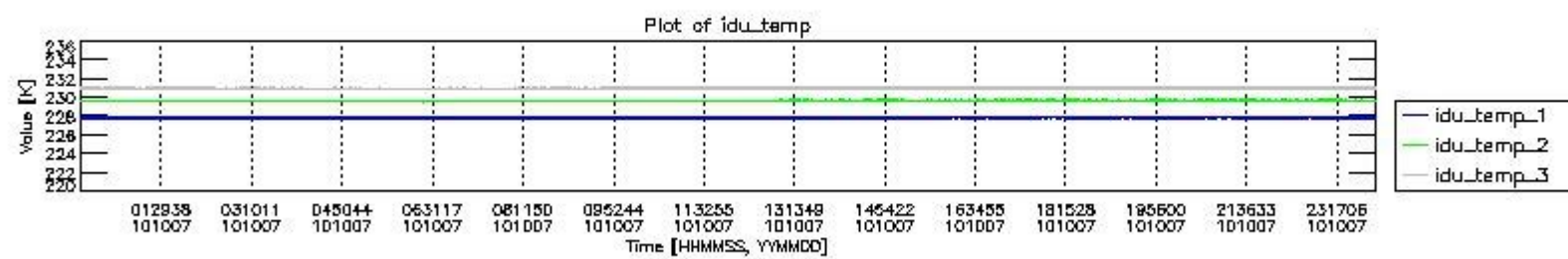
100557	1	0.0024063335
109689	1	0.0024063335
112871	1	0.0024063335
114710	1	0.0024063335
124800	38619	92.930192
124803	2926	7.0409317
125809	1	0.0024063335
126818	1	0.0024063335
127233	1	0.0024063335
129821	1	0.0024063335
147365	1	0.0024063335
149798	1	0.0024063335



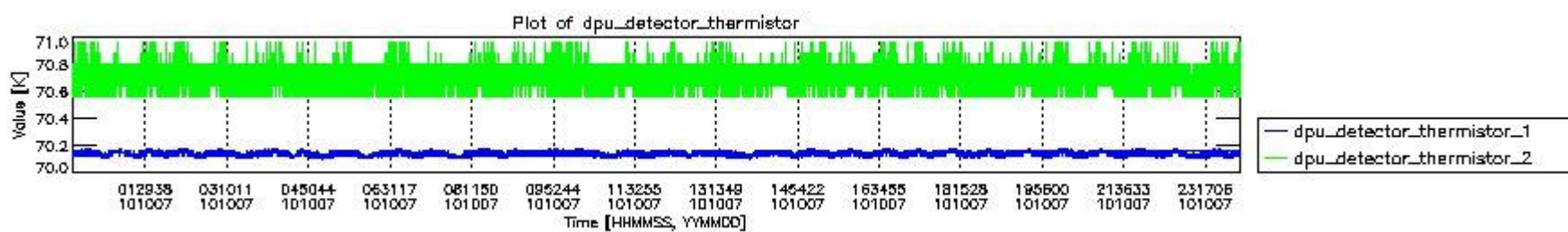
mipas_daily_report_level0_any_version_20101007_0.PNG



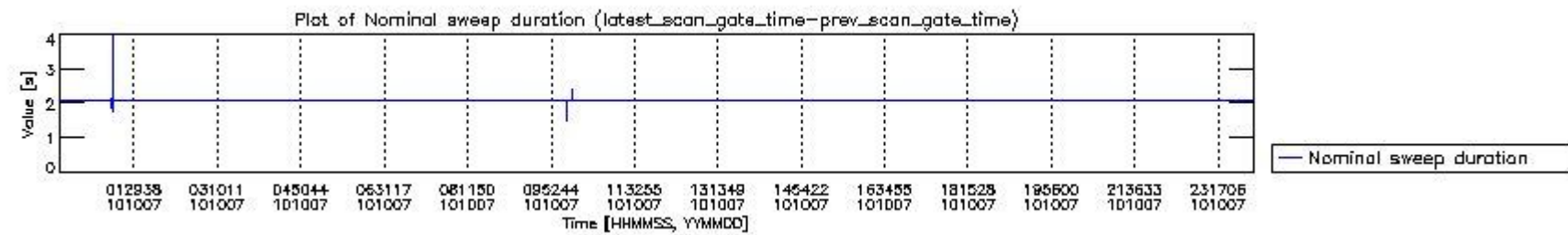
mipas_daily_report_level0_any_version_20101007_1.PNG



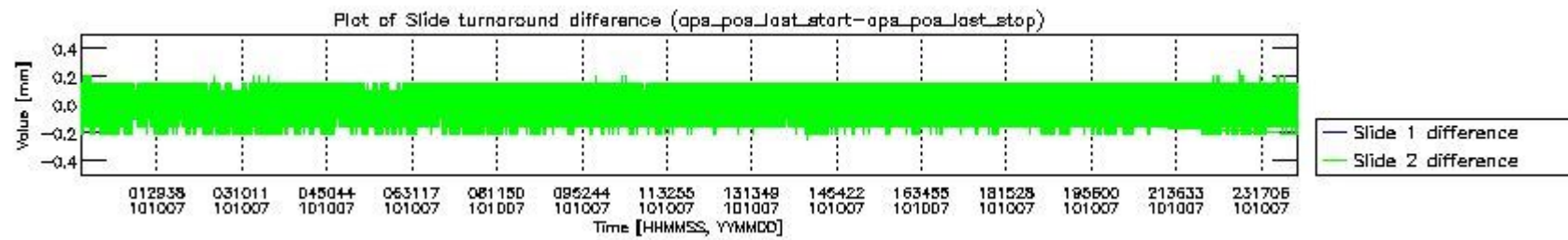
mipas_daily_report_level0_any_version_20101007_2.PNG



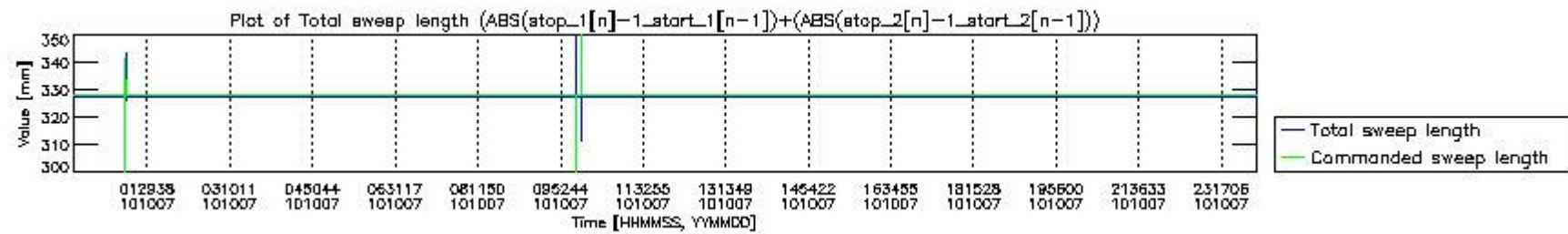
mipas_daily_report_level0_any_version_20101007_3.PNG



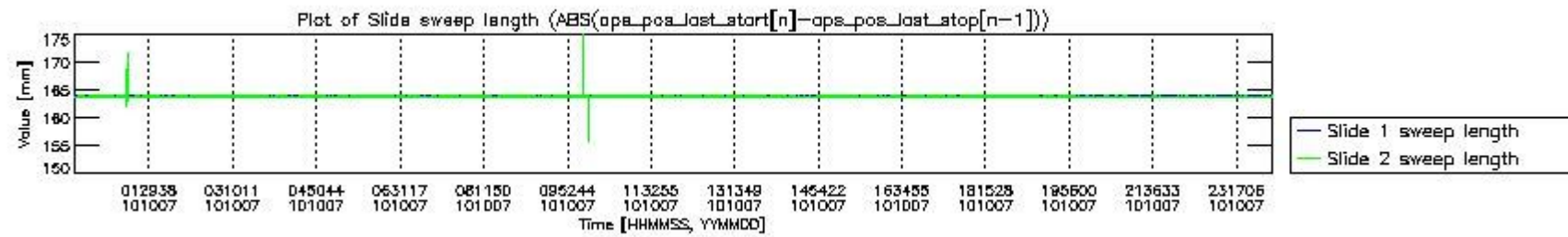
mipas_daily_report_level0_any_version_20101007_4.PNG



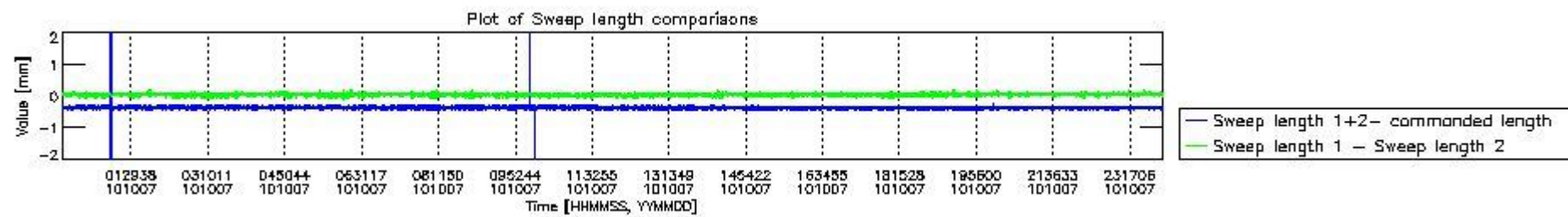
mipas_daily_report_level0_any_version_20101007_5.PNG



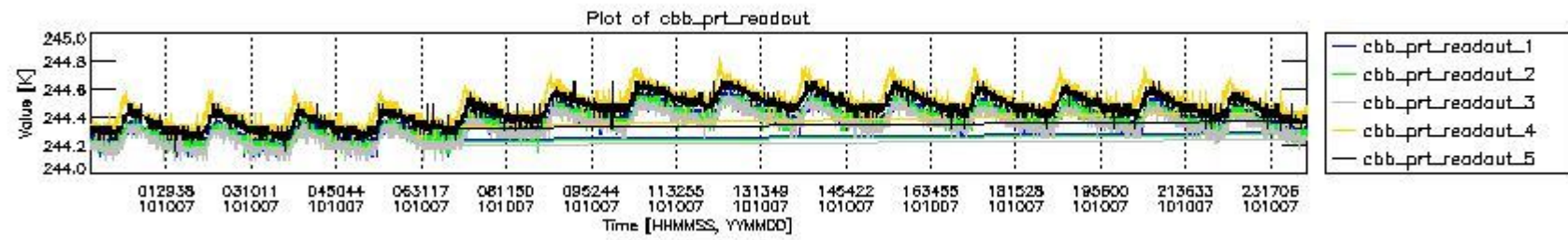
mipas_daily_report_level0_any_version_20101007_6.PNG



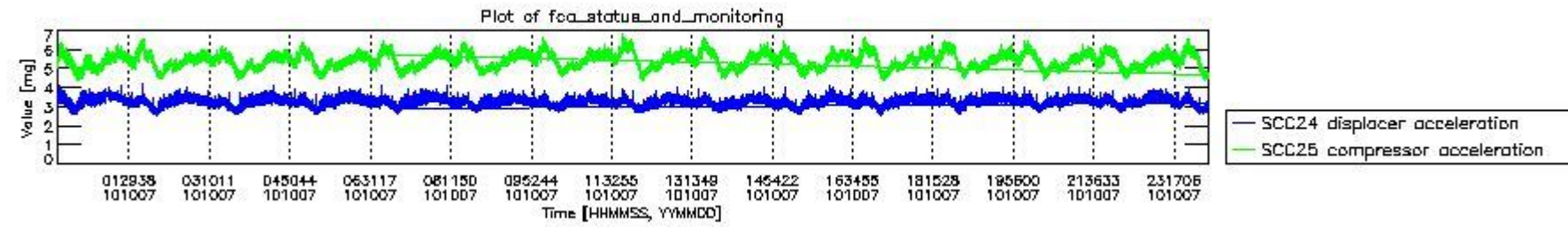
mipas_daily_report_level0_any_version_20101007_7.PNG



mipas_daily_report_level0_any_version_20101007_8.PNG



mipas_daily_report_level0_any_version_20101007_9.PNG

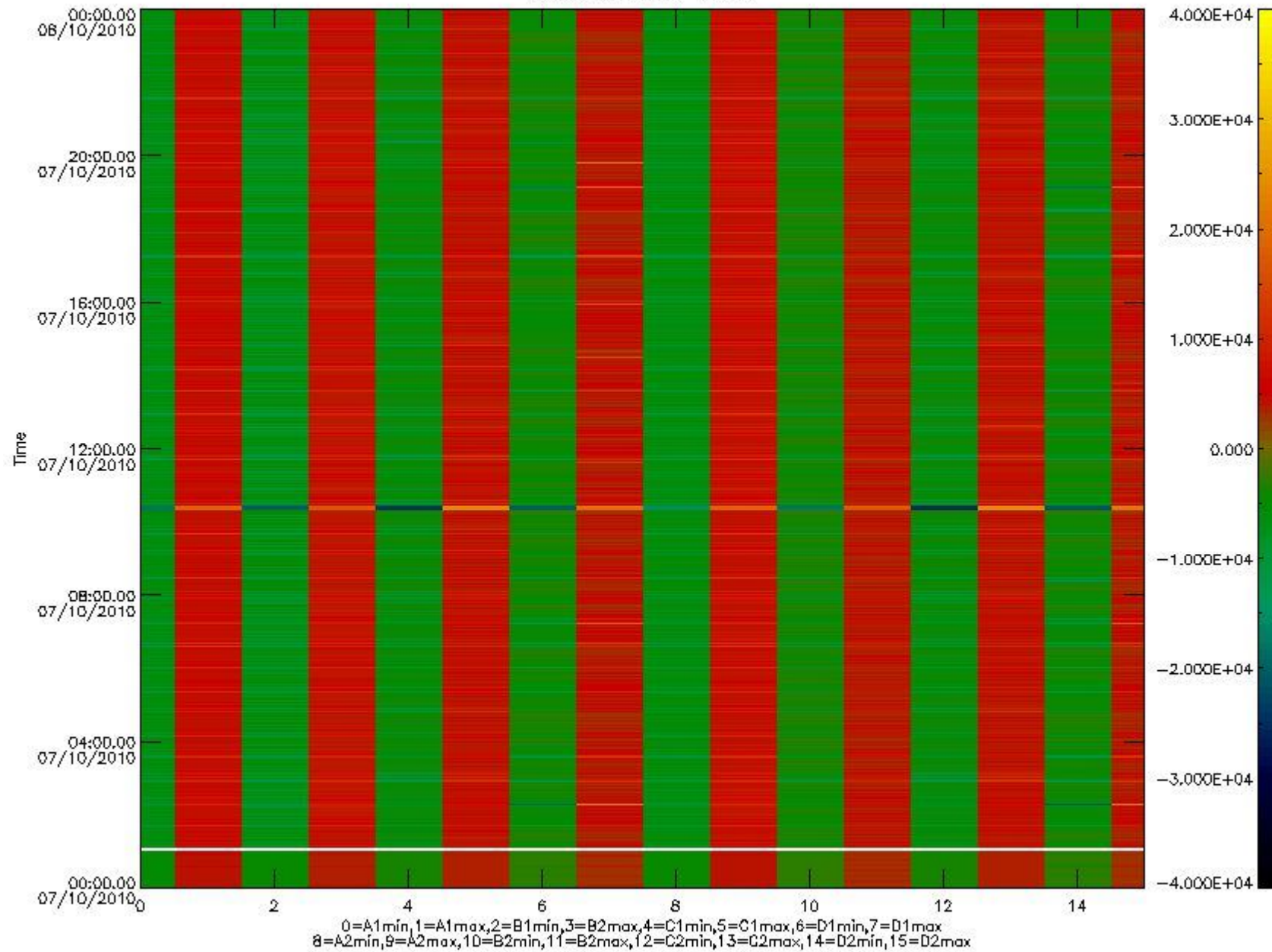


mipas_daily_report_level0_any_version_20101007_10.PNG

The following table shows channel statistics for all channels for this day.

Channel	Min	Max	ADC
A1	-17990	19066	16bit
B1	-20355	17516	16bit
C1	-24501	24357	16bit
D1	-32768	32767	16bit
A2	-15659	19306	16bit
B2	-18163	17841	16bit
C2	-25462	25062	16bit
D2	-32768	32767	16bit

MIPNLOP_MIPSOUPAC_aux_fields_igm_cal, channel statistics plot
Colour indicates value.



mipas_daily_report_level0_any_version_20101007_11.PNG

0.3 ADF monitoring

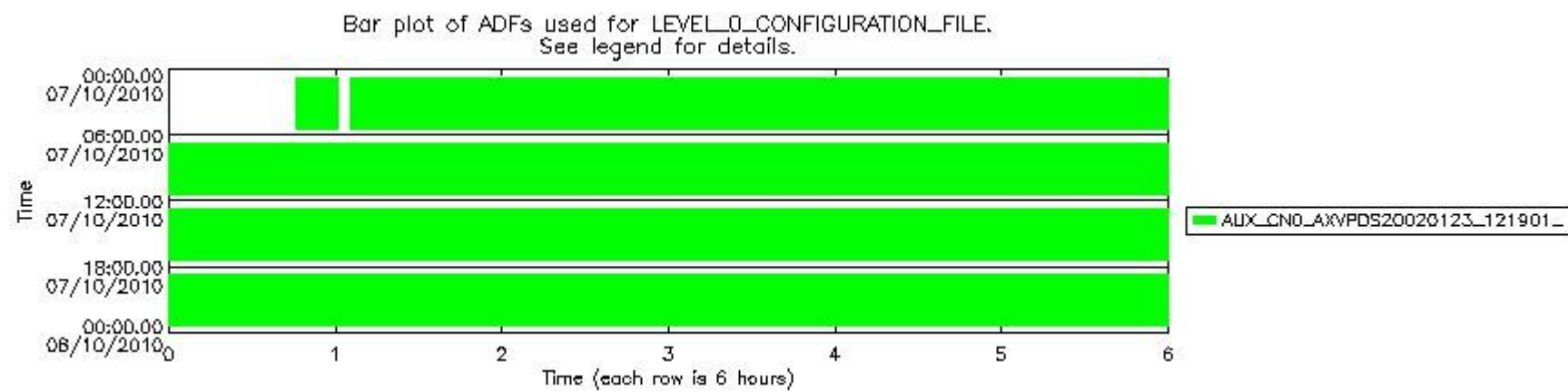
The use of ADFs is shown in two ways:

1. By means of two tables that can be used to find the ADF used for a specific product.
2. By means of plots that show changes in ADF using colours.

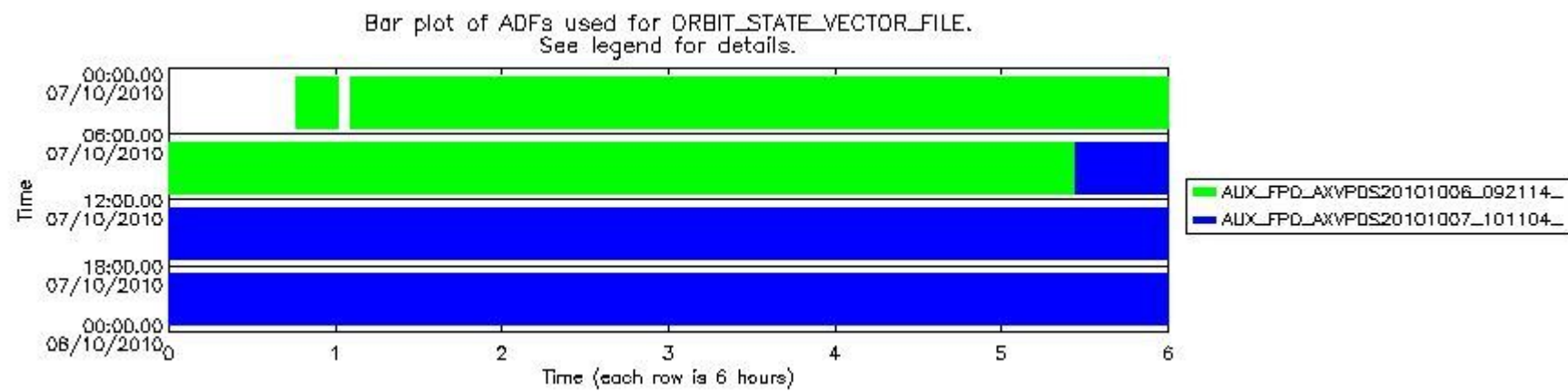
Number	ADF
0	AUX_CN0_AXVPDS20020123_121901_20020101_000000_20200101_000000
1	AUX_FPO_AXVPDS20101006_092114_20101005_184643_20101015_201254
2	AUX_FPO_AXVPDS20101007_101104_20101006_195542_20101016_212153

Number	Product name	#CN0	#FPO
--------	--------------	------	------

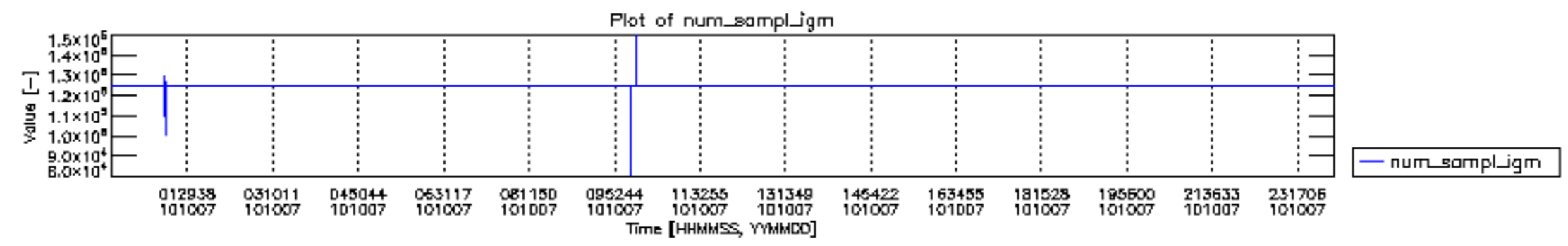
0	MIP_NL__0PNPDE20101007_004548_000009172093_00331_44974_2979.N1	0	1
1	MIP_NL__0PNPDE20101007_010512_000045622093_00332_44975_2980.N1	0	1
2	MIP_NL__0PNPDE20101007_021942_000047002093_00332_44975_2981.N1	0	1
3	MIP_NL__0PNPDE20101007_033729_000061712093_00333_44976_2982.N1	0	1
4	MIP_NL__0PNPDE20101007_051947_000060792093_00334_44977_2983.N1	0	1
5	MIP_NL__0PNPDE20101007_193934_000040742093_00343_44986_2984.N1	0	2
6	MIP_NL__0PNPDE20101007_204609_000065222093_00343_44986_2985.N1	0	2
7	MIP_NL__0PNPDE20101007_223346_000060022093_00344_44987_2986.N1	0	2
8	MIP_NL__0PNPDK20101007_070033_000039232093_00335_44978_3049.N1	0	1
9	MIP_NL__0PNPDK20101007_080418_000063432093_00336_44979_3050.N1	0	1
10	MIP_NL__0PNPDK20101007_094916_000059352093_00337_44980_3051.N1	0	1
11	MIP_NL__0PNPDK20101007_112637_000059832093_00338_44981_3052.N1	0	2
12	MIP_NL__0PNPDK20101007_130442_000061652093_00339_44982_3053.N1	0	2
13	MIP_NL__0PNPDK20101007_144628_000057702093_00340_44983_3054.N1	0	2
14	MIP_NL__0PNPDK20101007_162117_000060352093_00341_44984_3055.N1	0	2
15	MIP_NL__0PNPDK20101007_180056_000059982093_00342_44985_3056.N1	0	2

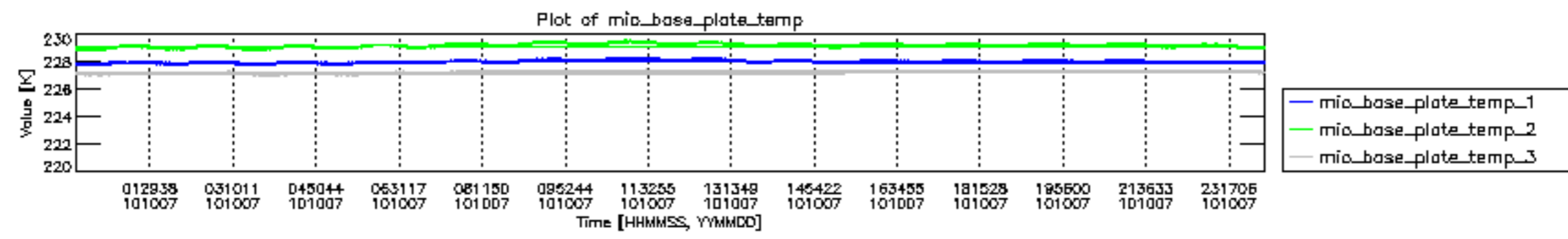


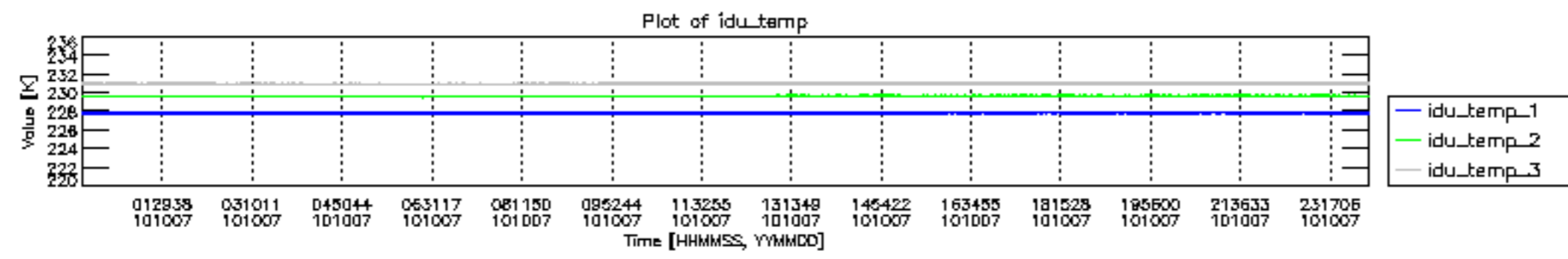
mipas_daily_report_level0__any_version__20101007_12.PNG

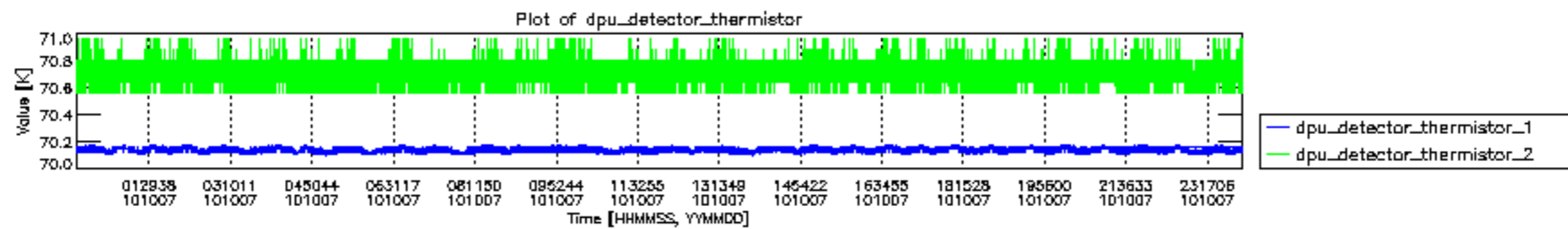


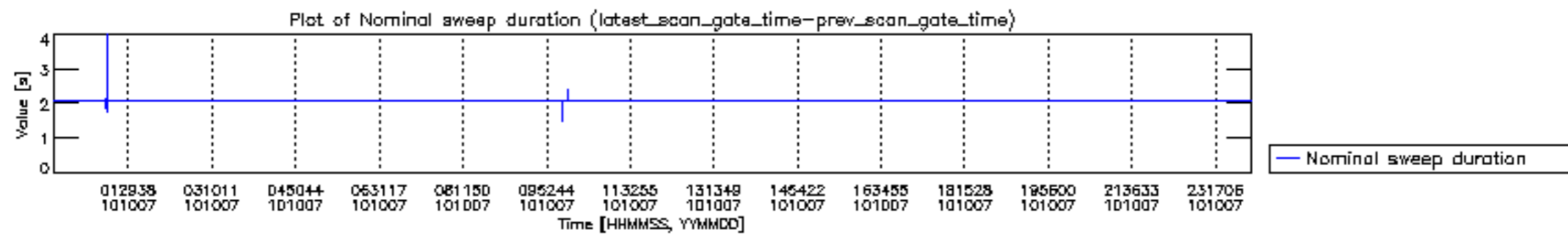
mipas_daily_report_level0__any_version__20101007_13.PNG

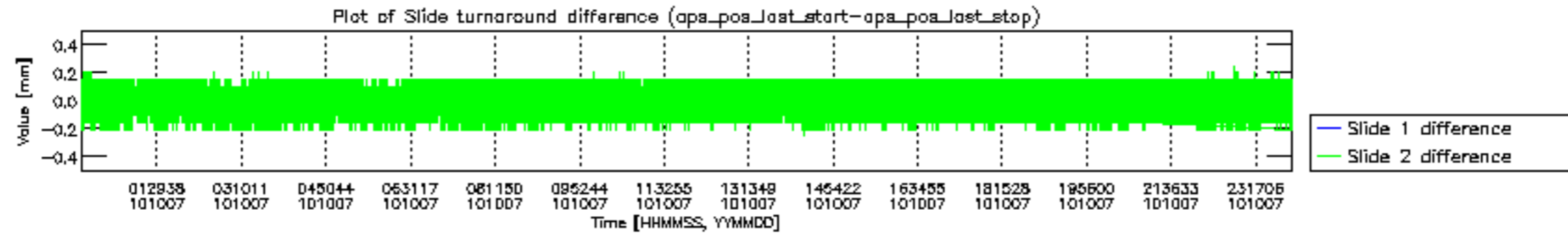


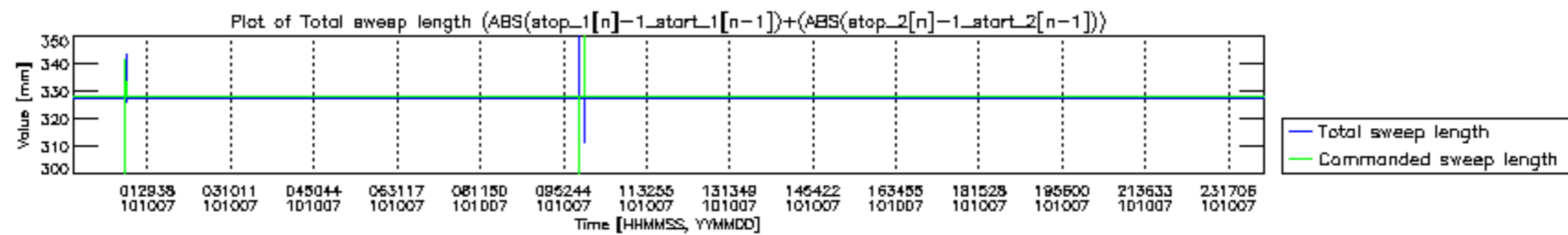


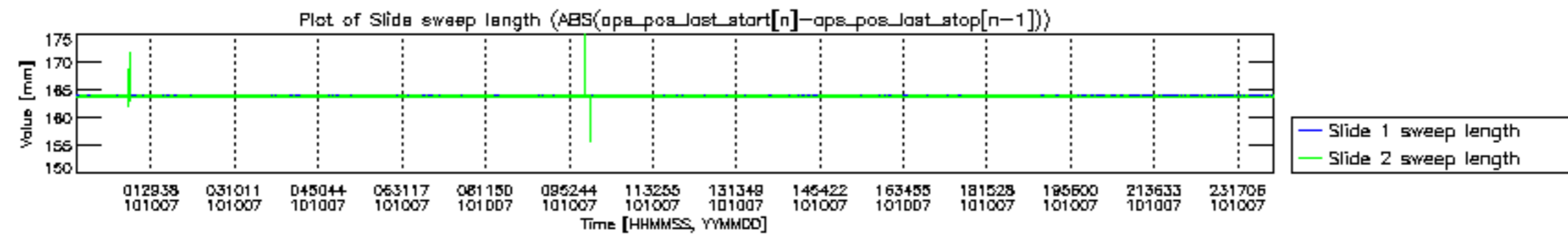


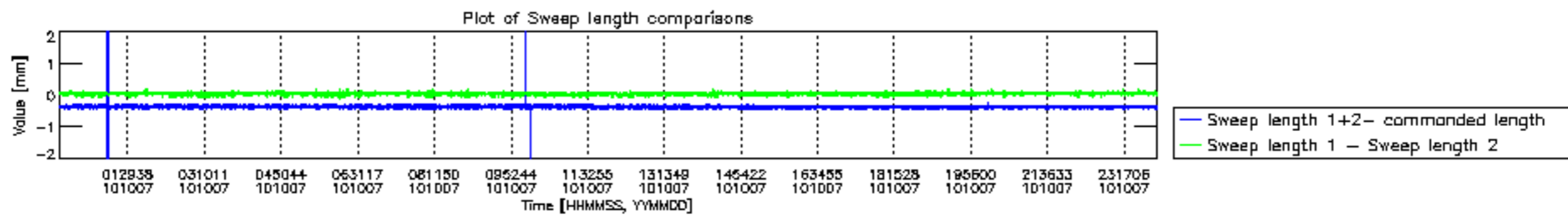


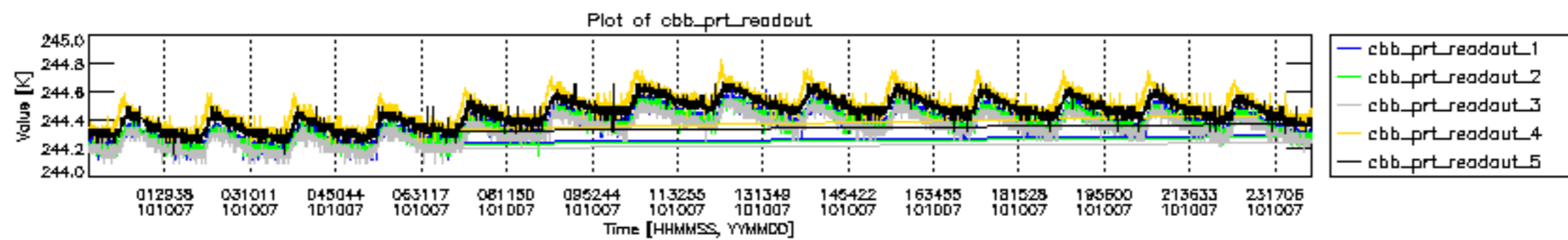


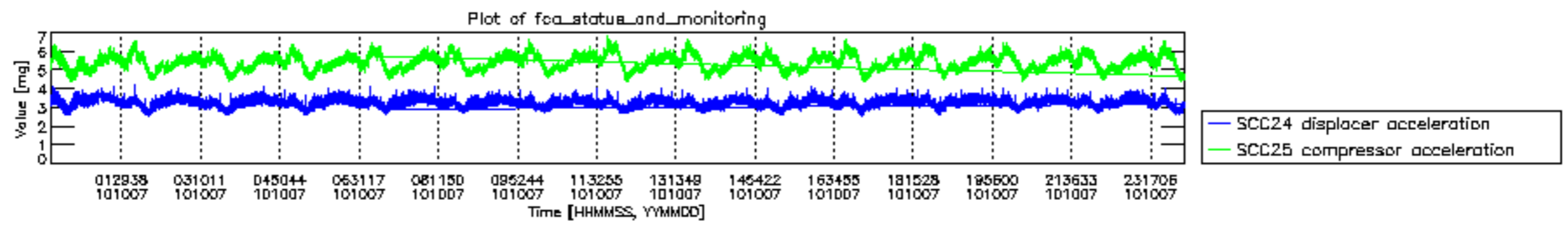




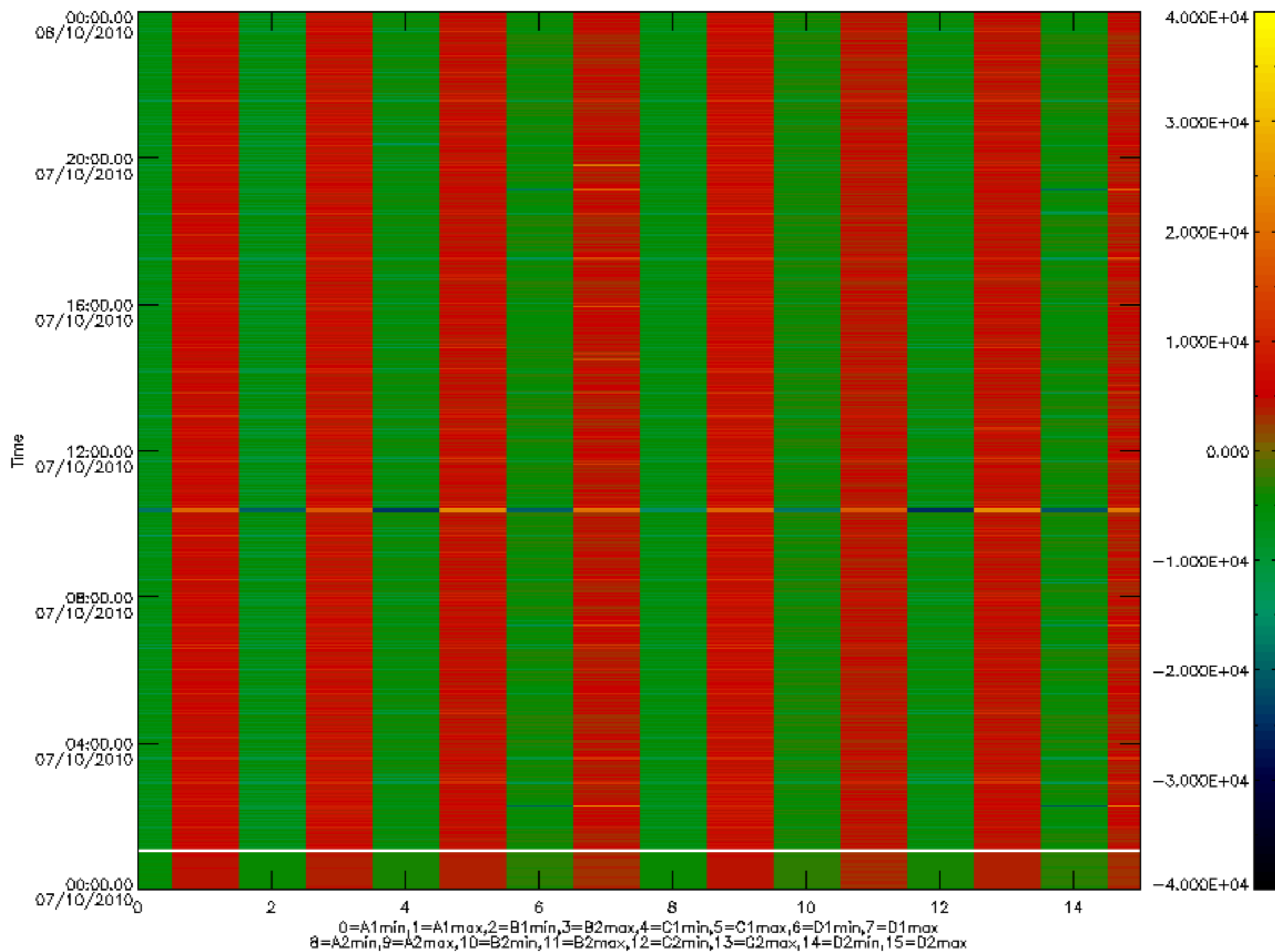


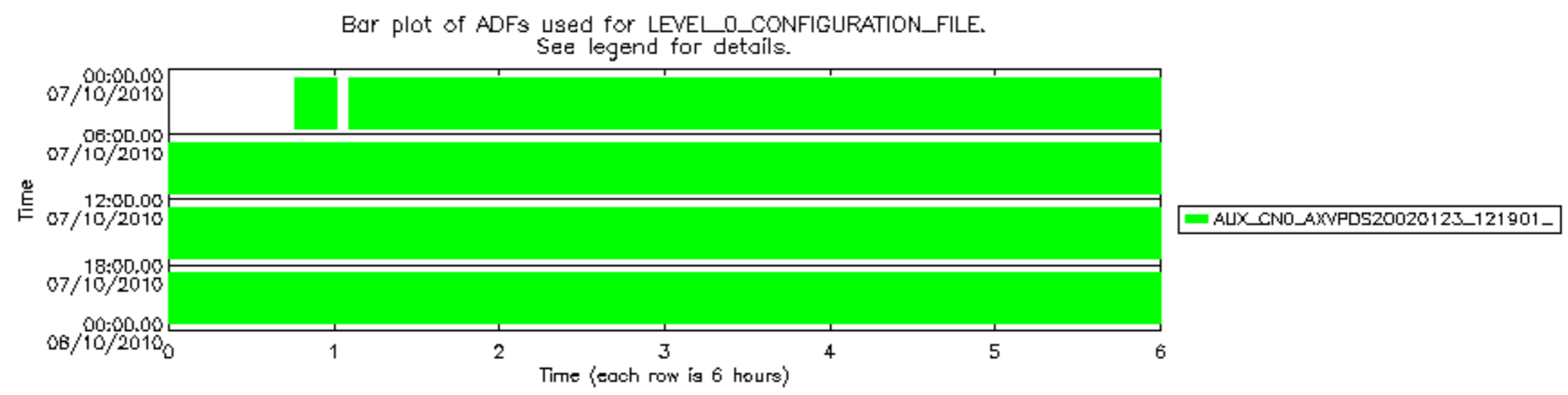






MIPNLOP_MIPSOUPAC_aux_fields_igm_cal, channel statistics plot
 Colour indicates value.





Bar plot of ADFs used for ORBIT_STATE_VECTOR_FILE.
See legend for details.

