

0. MIPAS Daily Report for level 0 products

[0.1 General Info](#)

[0.2 Instrument Operational Performance Parameters](#)

[0.3 ADF monitoring](#)

0.1 General Info

This report contains a daily analysis on parameters extracted from MIPAS level 0 data (The MIP_NL__0P product).

0.1.1 Report summary

The table below shows general characteristics of the data that are included into this report.

Item	Value
Report version	v1.5 2008-02-08
Time of report generation	11OCT2010 05:22:59
Data source version	<any version>
Processing scope for products	06OCT2010 00:00:00 to 07OCT2010 00:00:00
Start time of first product within scope	06OCT2010 01:16:20
Stop time of last product within scope	06OCT2010 20:12:43
Total number of level 0 products	17
Number of level 0 products with errors	0

0.1.2 Product Quality Indicators per product

The following table shows a summary for each product used in this report.

#	Product name	Start time	Stop time	Prod err	ISP err sign	ISP miss sign	ISP disc sign	rs sign
0	MIP_NL__0PNPDE20101006_011620_000009812093_00317_44960_2972.N1	06OCT2010 01:16:20	06OCT2010 01:32:42	0	0	0	0	0
1	MIP_NL__0PNPDE20101006_013649_000083792093_00318_44961_2973.N1	06OCT2010 01:36:49	06OCT2010 03:56:28	0	0	0	0	0
2	MIP_NL__0PNPDE20101006_035550_000070032093_00319_44962_2974.N1	06OCT2010 03:55:50	06OCT2010 05:52:33	0	0	0	0	0
3	MIP_NL__0PNPDE20101006_055155_000061342093_00320_44963_2975.N1	06OCT2010 05:51:55	06OCT2010 07:34:09	0	0	0	0	0
4	MIP_NL__0PNPDE20101006_201153_000042912093_00329_44972_2976.N1	06OCT2010 20:11:53	06OCT2010 21:23:24	0	0	0	0	0
5	MIP_NL__0PNPDE20101006_212221_000061962093_00329_44972_2977.N1	06OCT2010 21:22:21	06OCT2010 23:05:37	0	0	0	0	0
6	MIP_NL__0PNPDE20101006_230430_000061402093_00330_44973_2978.N1	06OCT2010 23:04:30	07OCT2010 00:46:50	0	0	0	0	0
7	MIP_NL__0PNPDK20101006_073329_000038542093_00321_44964_3039.N1	06OCT2010 07:33:29	06OCT2010 08:37:43	0	0	0	0	0
8	MIP_NL__0PNPDK20101006_083634_000062592093_00322_44965_3040.N1	06OCT2010 08:36:34	06OCT2010 10:20:53	0	0	0	0	0
9	MIP_NL__0PNPDK20101006_101858_000059602093_00323_44966_3041.N1	06OCT2010 10:18:58	06OCT2010 11:58:18	0	0	0	0	0
10	MIP_NL__0PNPDK20101006_115605_000061502093_00324_44967_3042.N1	06OCT2010 11:56:05	06OCT2010 13:38:35	0	0	0	0	0
11	MIP_NL__0PNPDK20101006_133709_000059912093_00325_44968_3043.N1	06OCT2010 13:37:09	06OCT2010 15:17:01	0	0	0	0	0
12	MIP_NL__0PNPDK20101006_151516_000041342093_00326_44969_3044.N1	06OCT2010 15:15:16	06OCT2010 16:24:10	0	0	0	0	0
13	MIP_NL__0PNPDK20101006_162410_000018682093_00326_44969_3045.N1	06OCT2010 16:24:10	06OCT2010 16:55:18	0	0	0	0	0
14	MIP_NL__0PNPDK20101006_165403_000059582093_00327_44970_3046.N1	06OCT2010 16:54:03	06OCT2010 18:33:21	0	0	0	0	0
15	MIP_NL__0PNPDK20101006_183224_000039382093_00328_44971_3047.N1	06OCT2010 18:32:24	06OCT2010 19:38:02	0	0	0	0	0
16	MIP_NL__0PNPDK20101006_193804_000020792093_00328_44971_3048.N1	06OCT2010 19:38:04	06OCT2010 20:12:43	0	0	0	0	0

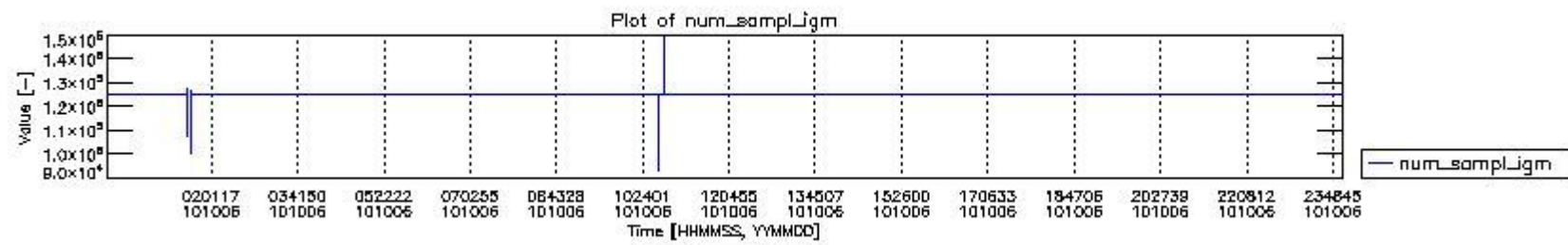
0.2 Instrument Operational Performance Parameters

The following plots give an overview of various instrument parameters for this day. The instrument parameters are part of the auxiliary data field within the source packets of the MIP_NL__0P product. The auxiliary data is normally included twice per interferogram. Note that only the first packet is currently included in monitoring.

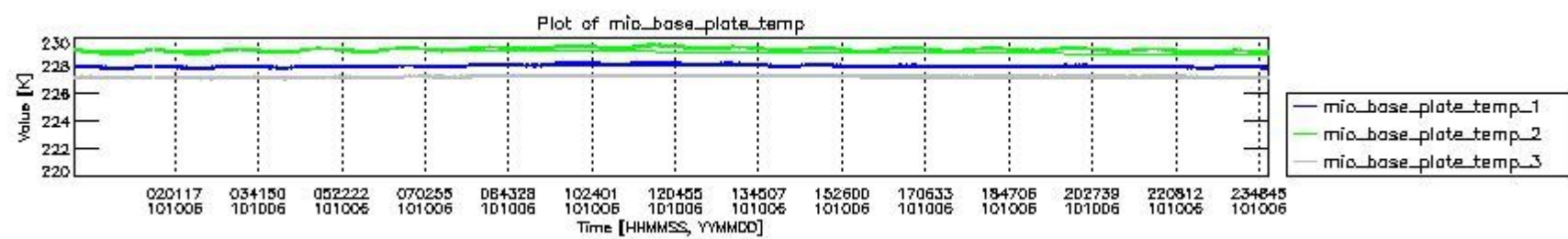
The following table shows the counts of various interferogram number of samples

Number of igm samples	Count [#]	Count [%]
93596	1	0.0024022870

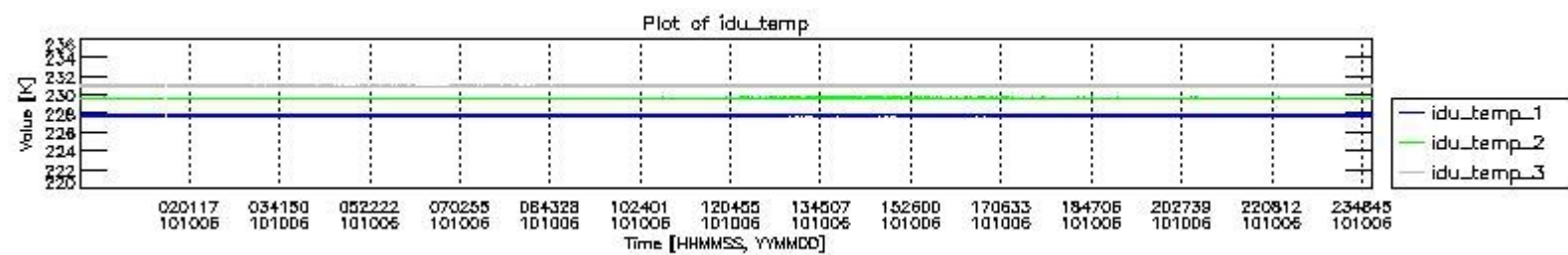
99132	1	0.0024022870
100706	1	0.0024022870
107310	1	0.0024022870
109952	1	0.0024022870
119264	1	0.0024022870
124800	39217	94.210488
124803	2398	5.7606842
125958	1	0.0024022870
127085	1	0.0024022870
127116	1	0.0024022870
127442	1	0.0024022870
147217	1	0.0024022870
149502	1	0.0024022870



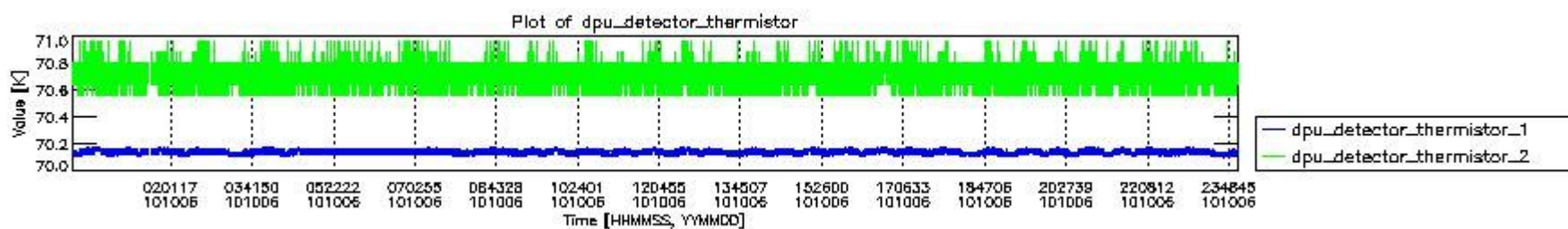
mipas_daily_report_level0_any_version_20101006_0.PNG



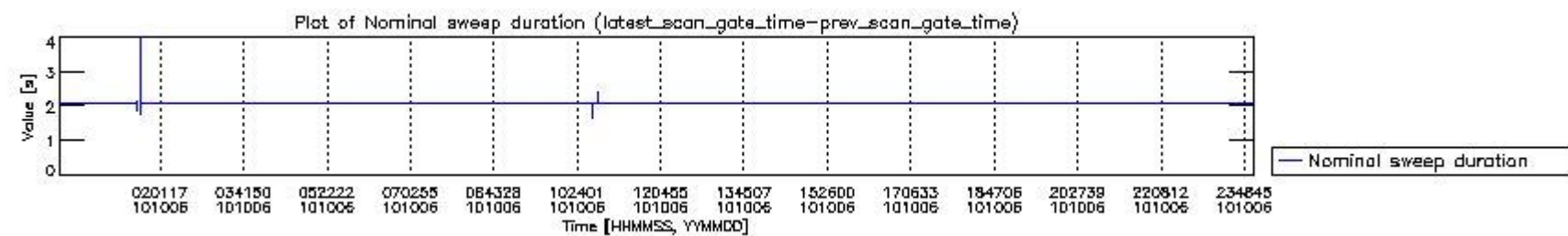
mipas_daily_report_level0_any_version_20101006_1.PNG



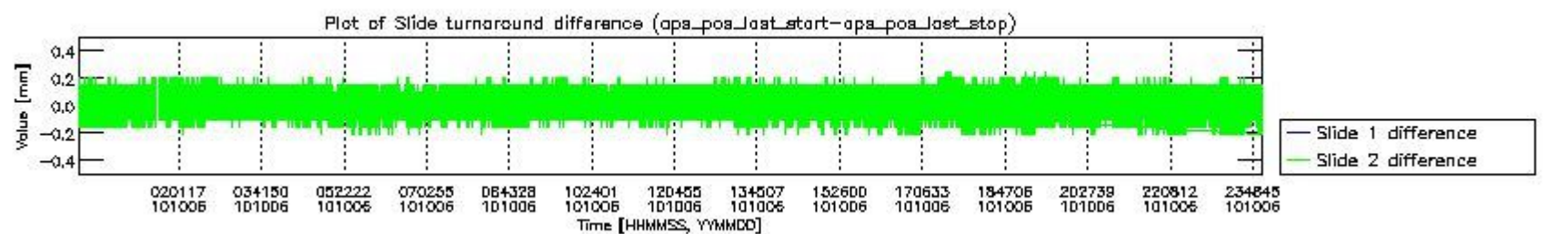
mipas_daily_report_level0_any_version_20101006_2.PNG



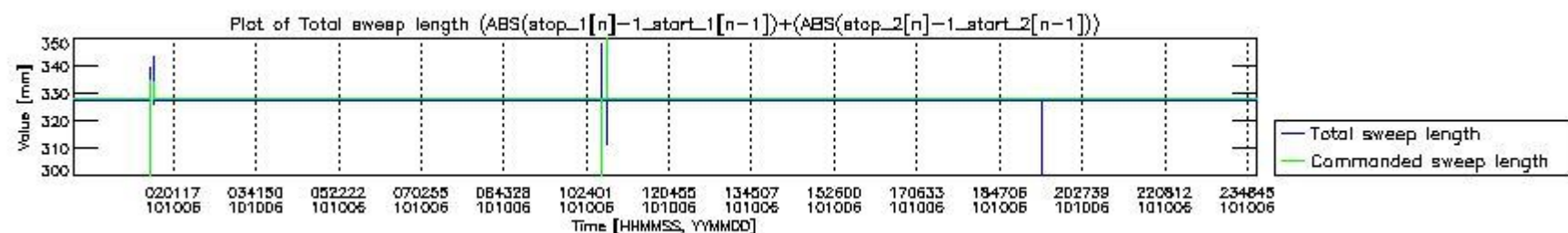
mipas_daily_report_level0_any_version_20101006_3.PNG



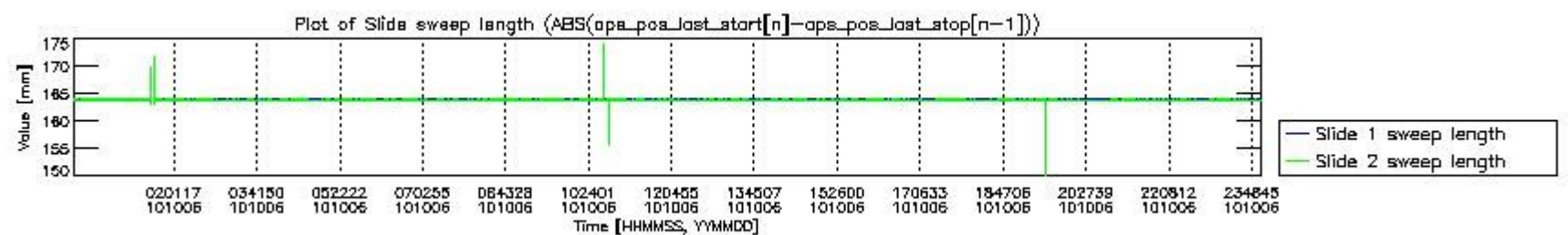
mipas_daily_report_level0_any_version_20101006_4.PNG



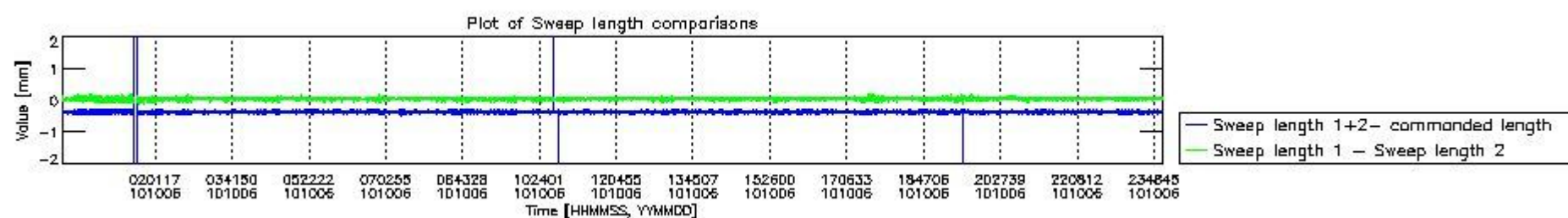
mipas_daily_report_level0_any_version_20101006_5.PNG



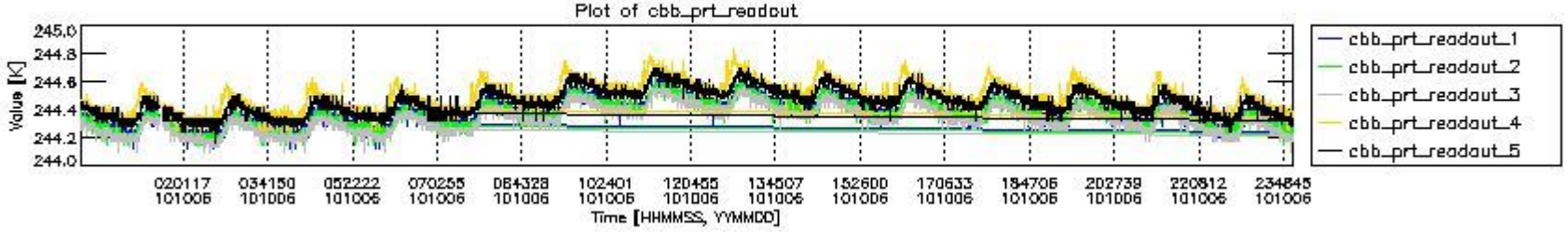
mipas_daily_report_level0_any_version_20101006_6.PNG



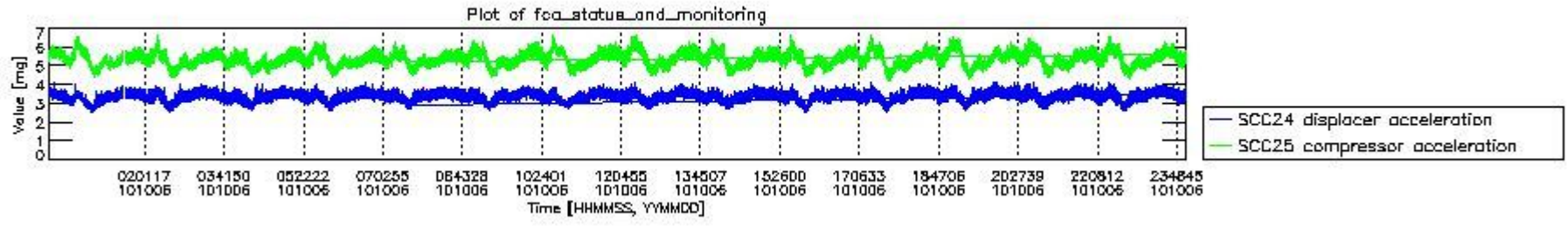
mipas_daily_report_level0_any_version_20101006_7.PNG



mipas_daily_report_level0_any_version_20101006_8.PNG



mipas_daily_report_level0_any_version_20101006_9.PNG

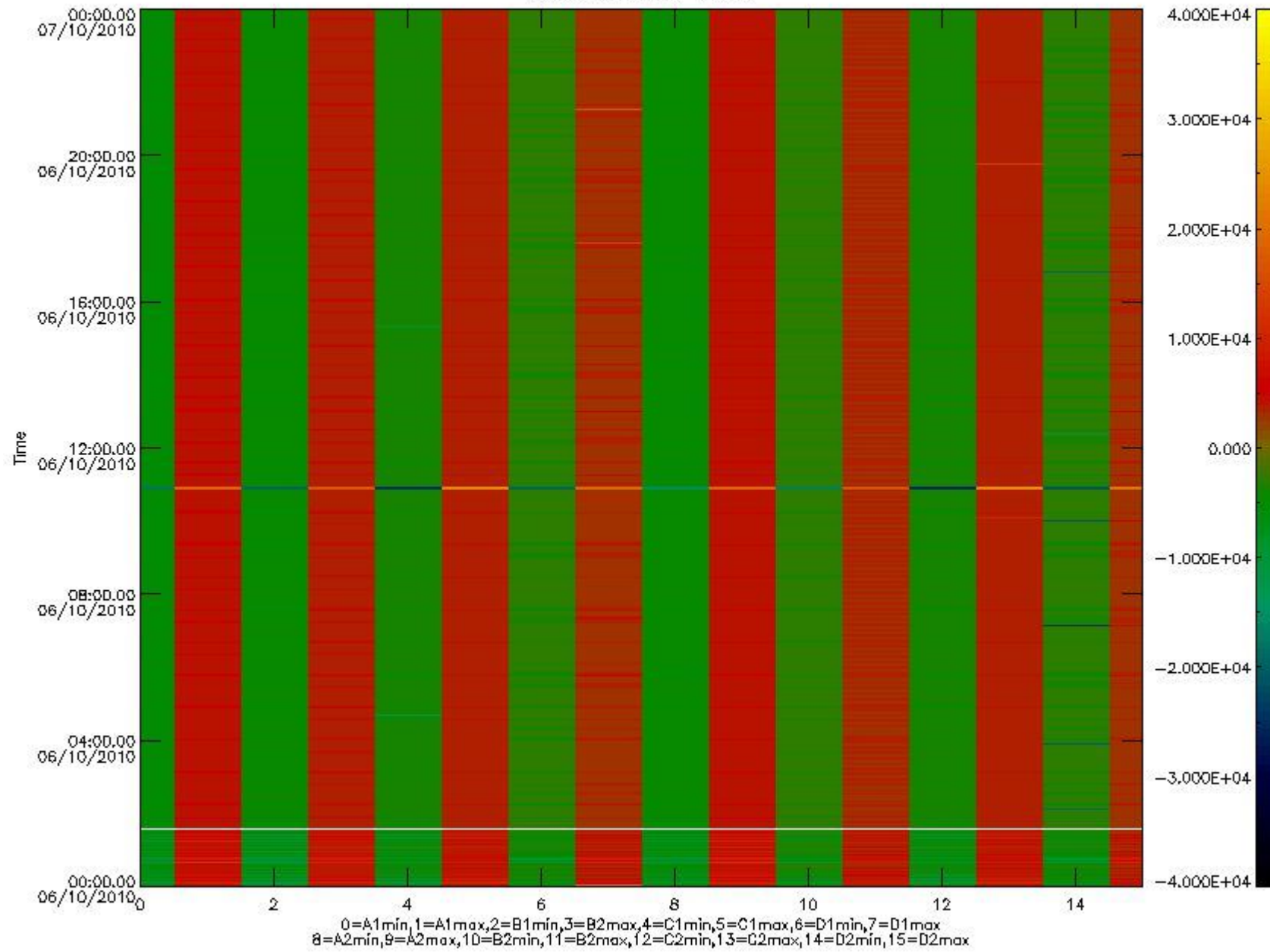


mipas_daily_report_level0_any_version_20101006_10.PNG

The following table shows channel statistics for all channels for this day.

Channel	Min	Max	ADC
A1	-17994	19061	16bit
B1	-20347	17518	16bit
C1	-24439	24345	16bit
D1	-32768	32767	16bit
A2	-15663	19312	16bit
B2	-18160	17851	16bit
C2	-25400	30891	16bit
D2	-32768	32767	16bit

MIPNLOP_MIPSOUPAC_aux_fields_igm_cal, channel statistics plot
Colour indicates value.



mipas_daily_report_level0_any_version_20101006_11.PNG

0.3 ADF monitoring

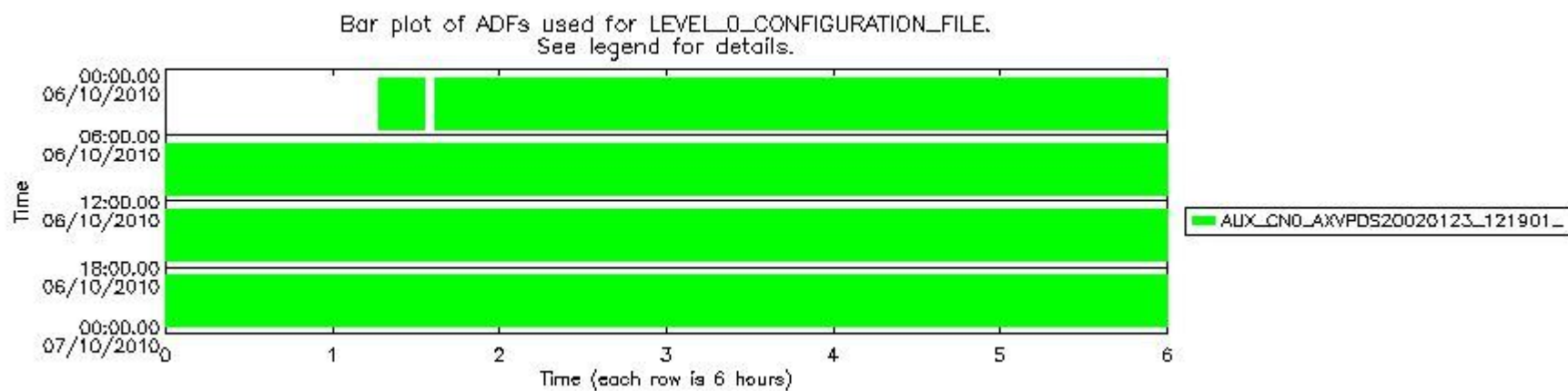
The use of ADFs is shown in two ways:

1. By means of two tables that can be used to find the ADF used for a specific product.
2. By means of plots that show changes in ADF using colours.

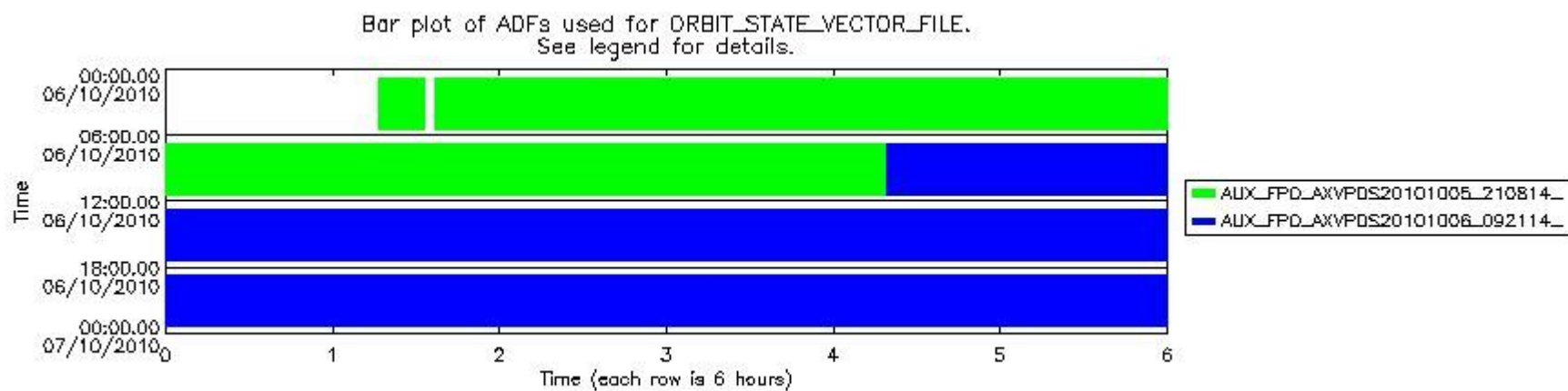
Number	ADF
0	AUX_CN0_AXVPDS20020123_121901_20020101_000000_20200101_000000
1	AUX_FPO_AXVPDS20101005_210814_20101004_191820_20101014_204432
2	AUX_FPO_AXVPDS20101006_092114_20101005_184643_20101015_201254

Number	Product name	#CN0	#FPO
--------	--------------	------	------

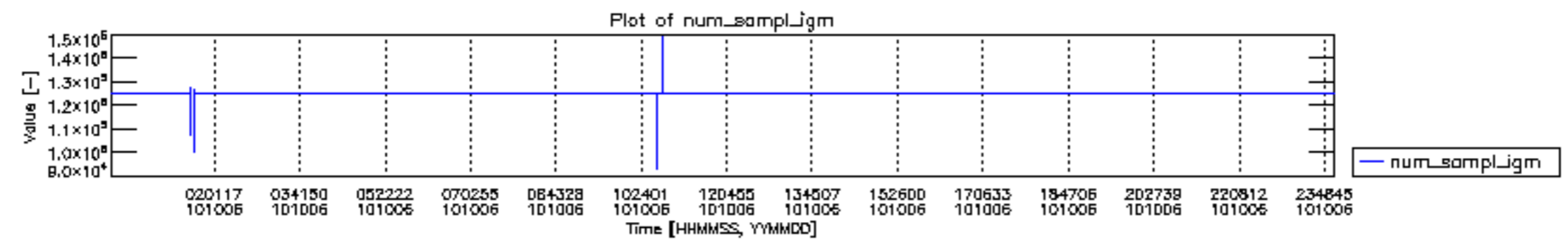
0	MIP_NL__0PNPDE20101006_011620_000009812093_00317_44960_2972.N1	0	1
1	MIP_NL__0PNPDE20101006_013649_000083792093_00318_44961_2973.N1	0	1
2	MIP_NL__0PNPDE20101006_035550_000070032093_00319_44962_2974.N1	0	1
3	MIP_NL__0PNPDE20101006_055155_000061342093_00320_44963_2975.N1	0	1
4	MIP_NL__0PNPDE20101006_201153_000042912093_00329_44972_2976.N1	0	2
5	MIP_NL__0PNPDE20101006_212221_000061962093_00329_44972_2977.N1	0	2
6	MIP_NL__0PNPDE20101006_230430_000061402093_00330_44973_2978.N1	0	2
7	MIP_NL__0PNPDK20101006_073329_000038542093_00321_44964_3039.N1	0	1
8	MIP_NL__0PNPDK20101006_083634_000062592093_00322_44965_3040.N1	0	1
9	MIP_NL__0PNPDK20101006_101858_000059602093_00323_44966_3041.N1	0	2
10	MIP_NL__0PNPDK20101006_115605_000061502093_00324_44967_3042.N1	0	2
11	MIP_NL__0PNPDK20101006_133709_000059912093_00325_44968_3043.N1	0	2
12	MIP_NL__0PNPDK20101006_151516_000041342093_00326_44969_3044.N1	0	2
13	MIP_NL__0PNPDK20101006_162410_000018682093_00326_44969_3045.N1	0	2
14	MIP_NL__0PNPDK20101006_165403_000059582093_00327_44970_3046.N1	0	2
15	MIP_NL__0PNPDK20101006_183224_000039382093_00328_44971_3047.N1	0	2
16	MIP_NL__0PNPDK20101006_193804_000020792093_00328_44971_3048.N1	0	2

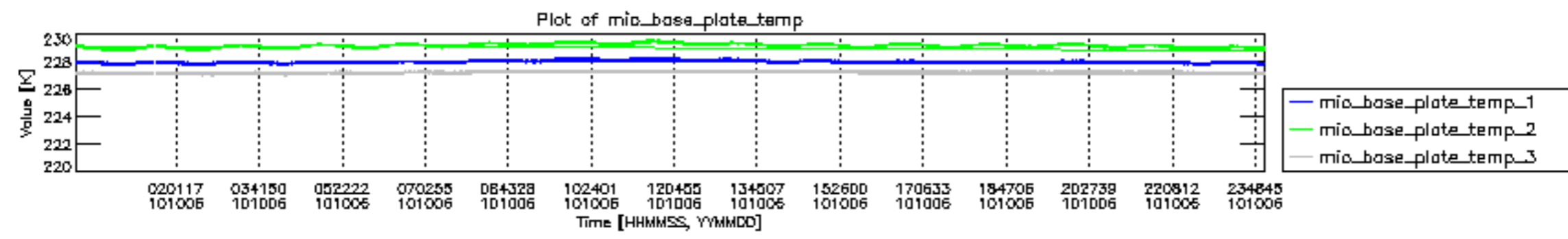


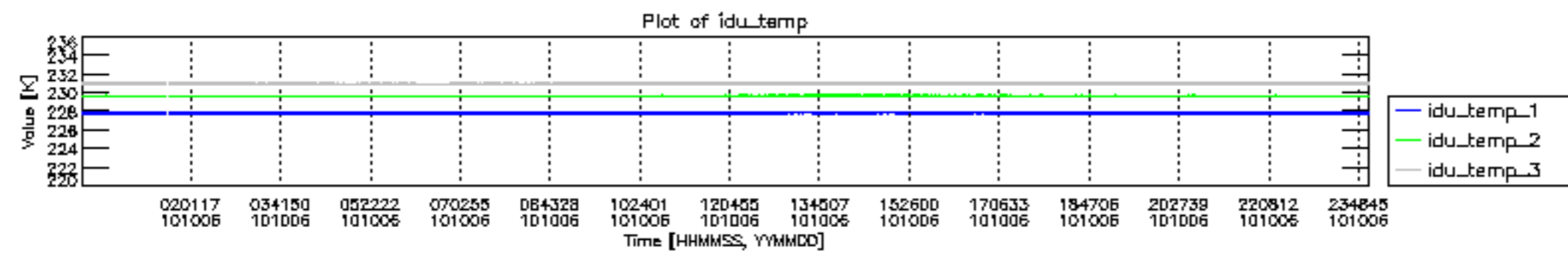
mipas_daily_report_level0__any_version__20101006_12.PNG

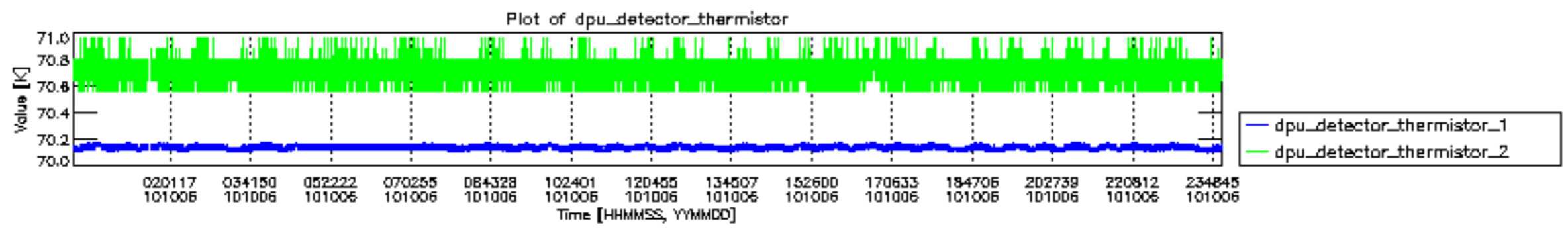


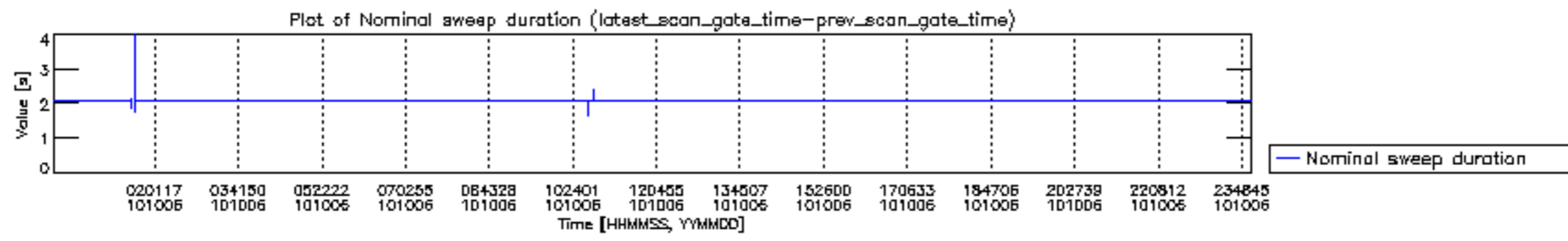
mipas_daily_report_level0__any_version__20101006_13.PNG

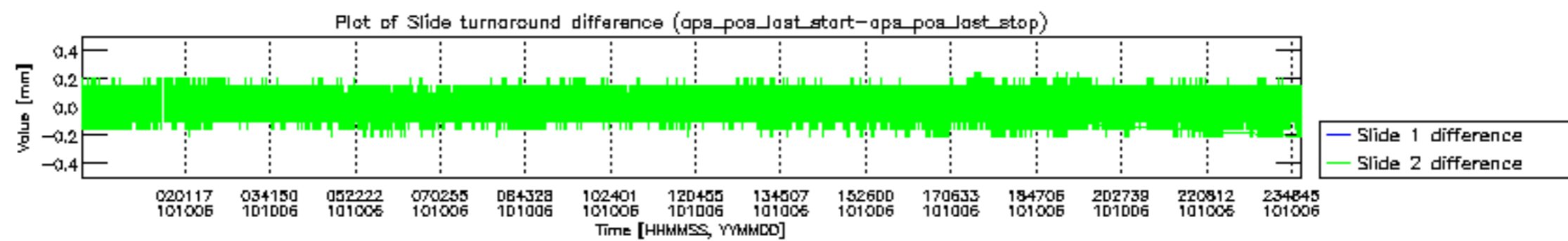


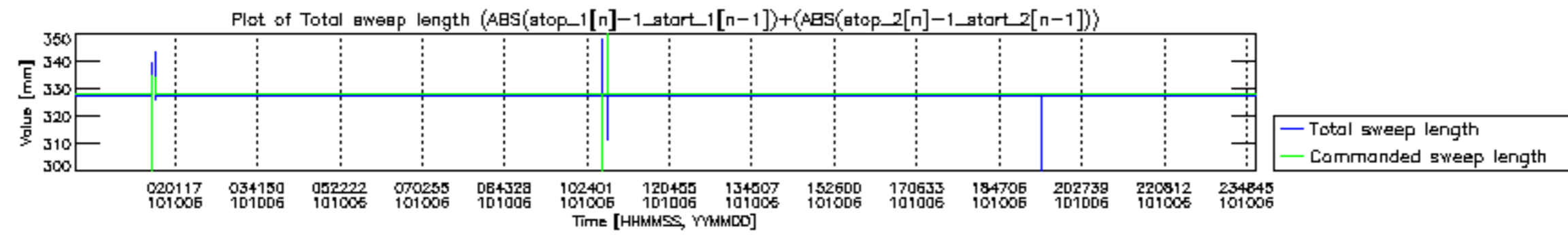


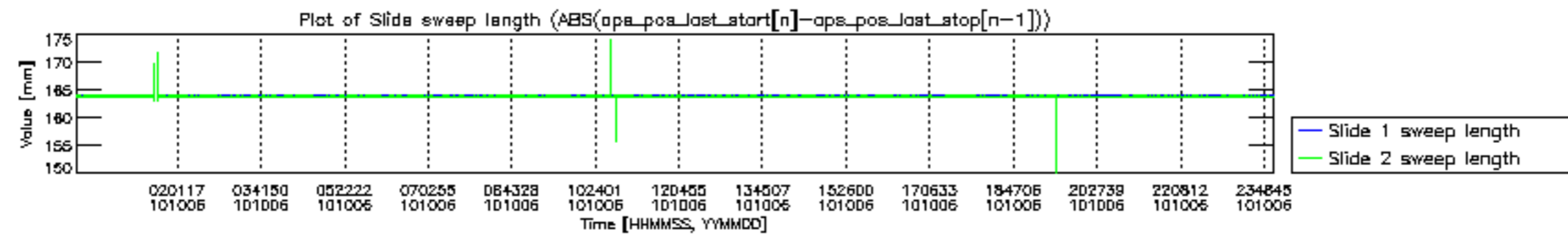


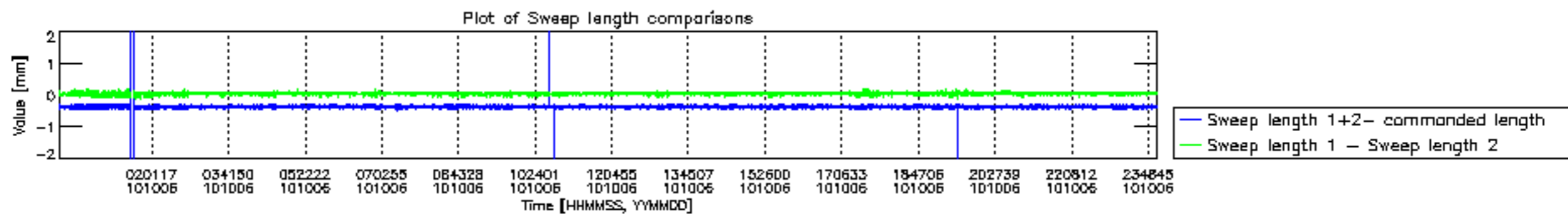


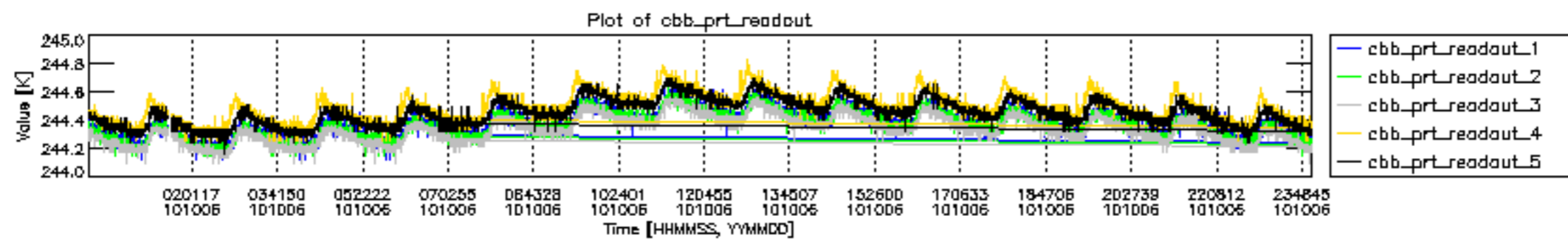


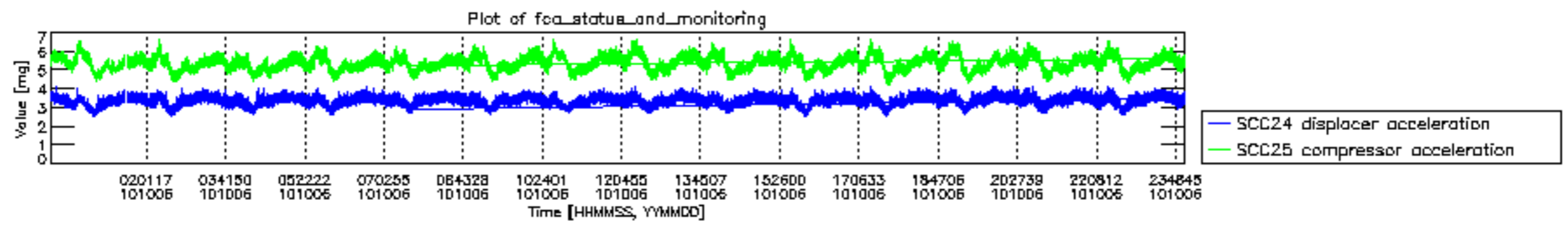












MIPNLOP_MIPSOUPAC_aux_fields_igm_cal, channel statistics plot
 Colour indicates value.

