

## 0. MIPAS Daily Report for level 0 products

### [0.1 General Info](#)

### [0.2 Instrument Operational Performance Parameters](#)

### [0.3 ADF monitoring](#)

## 0.1 General Info

This report contains a daily analysis on parameters extracted from MIPAS level 0 data (The MIP\_NL\_\_0P product).

### 0.1.1 Report summary

The table below shows general characteristics of the data that are included into this report.

Item	Value
Report version	v1.5 2008-02-08
Time of report generation	10OCT2010 05:23:24
Data source version	<any version>
Processing scope for products	05OCT2010 00:00:00 to 06OCT2010 00:00:00
Start time of first product within scope	05OCT2010 00:08:12
Stop time of last product within scope	05OCT2010 20:43:30
Total number of level 0 products	16
Number of level 0 products with errors	0

### 0.1.2 Product Quality Indicators per product

The following table shows a summary for each product used in this report.

#	Product name	Start time	Stop time	Prod err	ISP err sign	ISP miss sign	ISP disc sign	rs sign
0	MIP_NL__0PNPDE20101005_000812_000059252093_00302_44945_2965.N1	05OCT2010 00:08:12	05OCT2010 01:46:57	0	0	0	0	0
1	MIP_NL__0PNPDE20101005_014550_000044982093_00303_44946_2966.N1	05OCT2010 01:45:50	05OCT2010 03:00:48	0	0	0	0	0
2	MIP_NL__0PNPDE20101005_030014_000061612093_00304_44947_2967.N1	05OCT2010 03:00:14	05OCT2010 04:42:55	0	0	0	0	0
3	MIP_NL__0PNPDE20101005_044222_000060582093_00305_44948_2968.N1	05OCT2010 04:42:22	05OCT2010 06:23:20	0	0	0	0	0
4	MIP_NL__0PNPDE20101005_204135_000043622093_00315_44958_2969.N1	05OCT2010 20:41:35	05OCT2010 21:54:17	0	0	0	0	0
5	MIP_NL__0PNPDE20101005_215310_000061732093_00315_44958_2970.N1	05OCT2010 21:53:10	05OCT2010 23:36:04	0	0	0	0	0
6	MIP_NL__0PNPDE20101005_233459_000061482093_00316_44959_2971.N1	05OCT2010 23:34:59	06OCT2010 01:17:27	0	0	0	0	0
7	MIP_NL__0PNPDK20101005_062247_000041052093_00306_44949_3029.N1	05OCT2010 06:22:47	05OCT2010 07:31:12	0	0	0	0	0
8	MIP_NL__0PNPDK20101005_072957_000061942093_00307_44950_3030.N1	05OCT2010 07:29:57	05OCT2010 09:13:11	0	0	0	0	0
9	MIP_NL__0PNPDK20101005_091237_000059632093_00308_44951_3031.N1	05OCT2010 09:12:37	05OCT2010 10:52:01	0	0	0	0	0
10	MIP_NL__0PNPDK20101005_105031_000060402093_00309_44952_3032.N1	05OCT2010 10:50:31	05OCT2010 12:31:10	0	0	0	0	0
11	MIP_NL__0PNPDK20101005_123012_000059622093_00310_44953_3033.N1	05OCT2010 12:30:12	05OCT2010 14:09:34	0	0	0	0	0
12	MIP_NL__0PNPDK20101005_140825_000059922093_00311_44954_3034.N1	05OCT2010 14:08:25	05OCT2010 15:48:17	0	0	0	0	0
13	MIP_NL__0PNPDK20101005_154708_000057972093_00312_44955_3035.N1	05OCT2010 15:47:08	05OCT2010 17:23:45	0	0	0	0	0
14	MIP_NL__0PNPDK20101005_172146_000061082093_00313_44956_3037.N1	05OCT2010 17:21:46	05OCT2010 19:03:34	0	0	0	0	0
15	MIP_NL__0PNPDK20101005_190230_000060602093_00314_44957_3038.N1	05OCT2010 19:02:30	05OCT2010 20:43:30	0	0	0	0	0

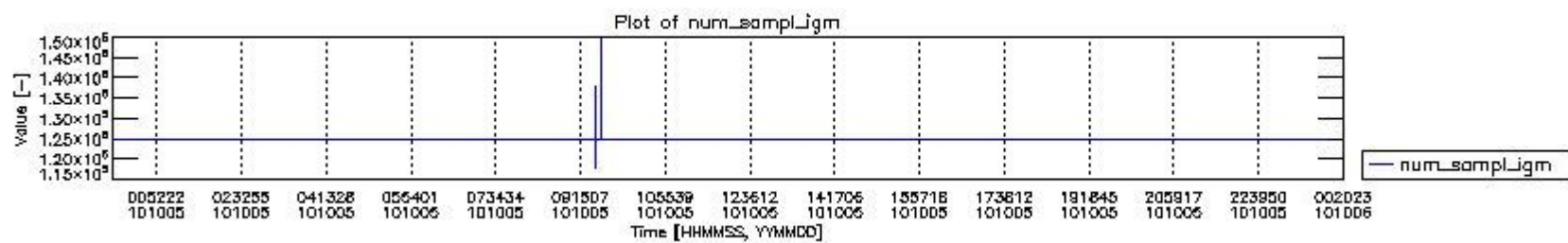
## 0.2 Instrument Operational Performance Parameters

The following plots give an overview of various instrument parameters for this day. The instrument parameters are part of the auxiliary data field within the source packets of the MIP\_NL\_\_0P product. The auxiliary data is normally included twice per interferogram. Note that only the first packet is currently included in monitoring.

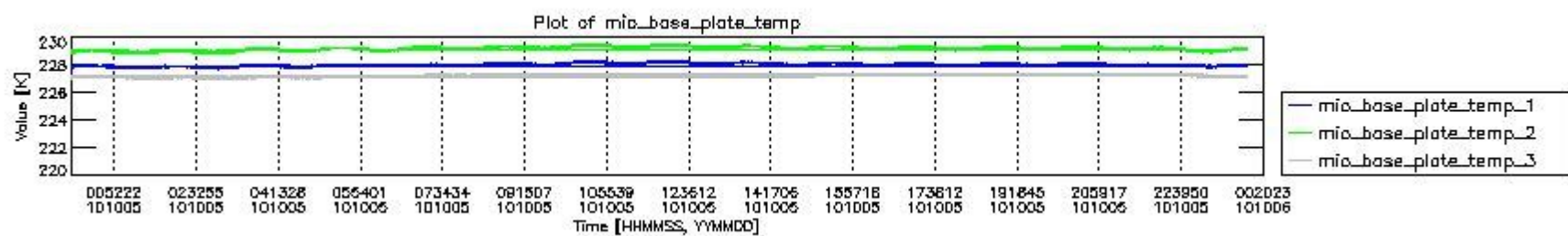
The following table shows the counts of various interferogram number of samples

Number of igm samples	Count [#]	Count [%]
117941	1	0.0024013063
124800	38683	92.889732

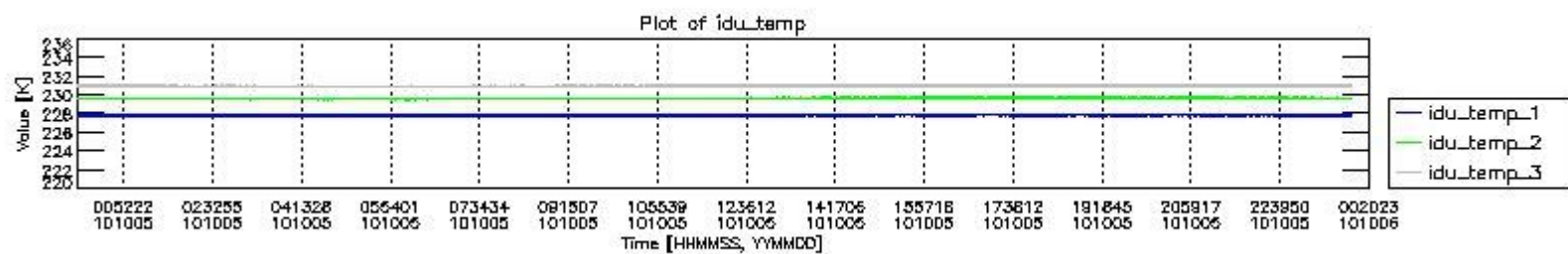
124803	2955	7.0958601
127159	1	0.0024013063
131214	1	0.0024013063
138073	1	0.0024013063
147291	1	0.0024013063
149650	1	0.0024013063



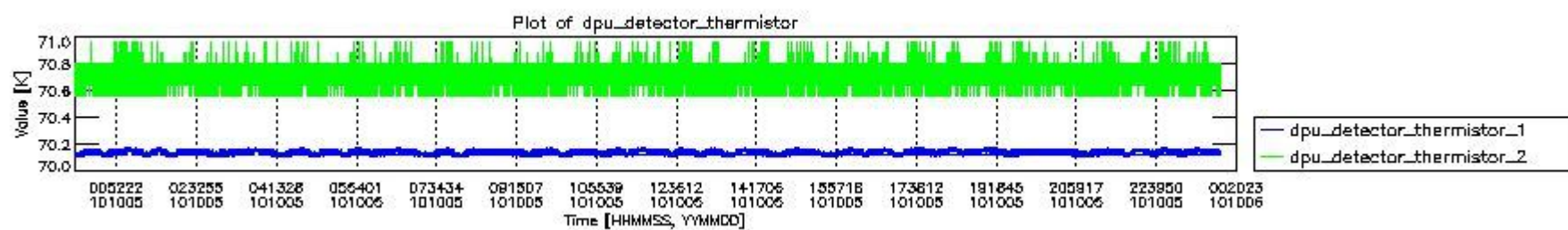
mipas\_daily\_report\_level0\_any\_version\_20101005\_0.PNG



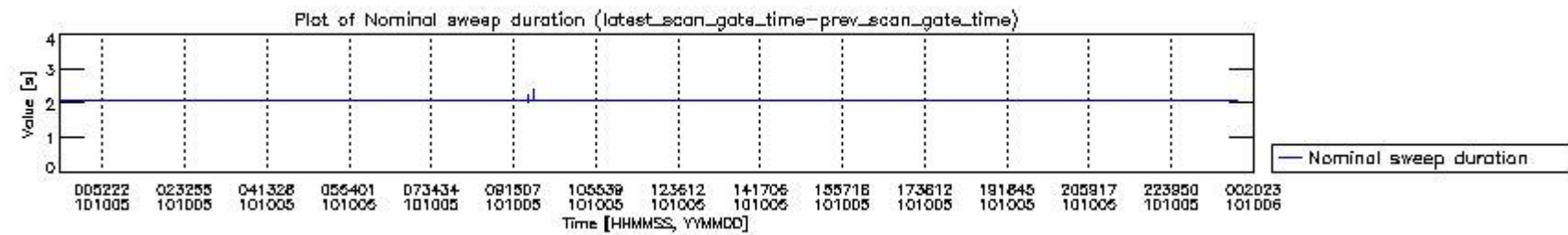
mipas\_daily\_report\_level0\_any\_version\_20101005\_1.PNG



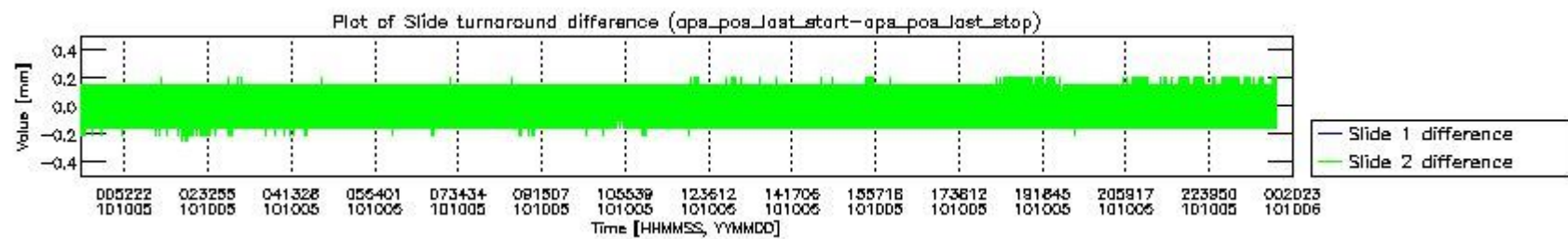
mipas\_daily\_report\_level0\_any\_version\_20101005\_2.PNG



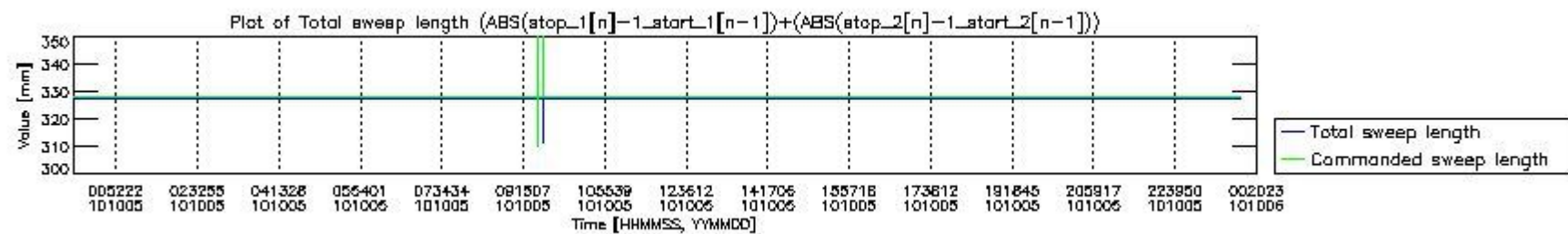
mipas\_daily\_report\_level0\_any\_version\_20101005\_3.PNG



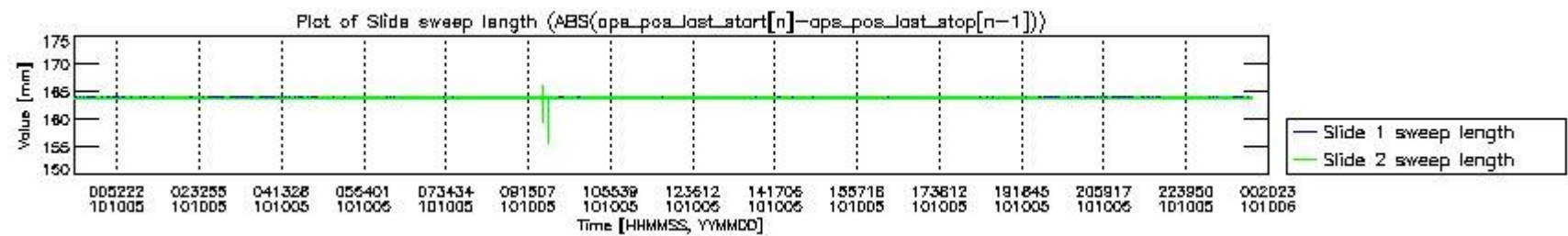
mipas\_daily\_report\_level0\_any\_version\_20101005\_4.PNG



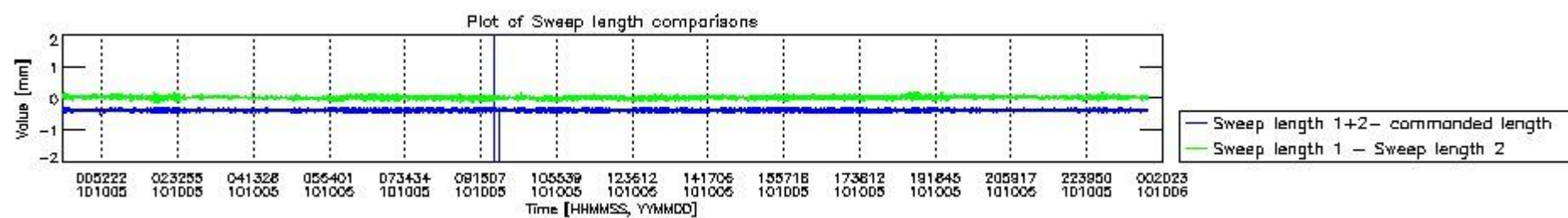
mipas\_daily\_report\_level0\_any\_version\_20101005\_5.PNG



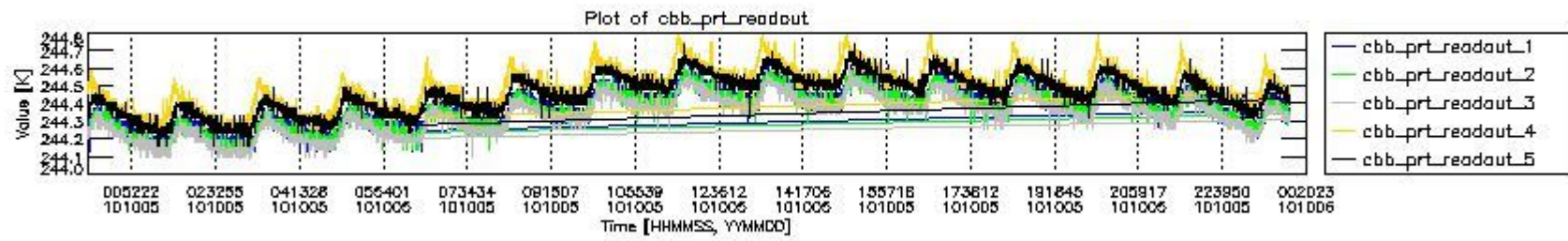
mipas\_daily\_report\_level0\_any\_version\_20101005\_6.PNG



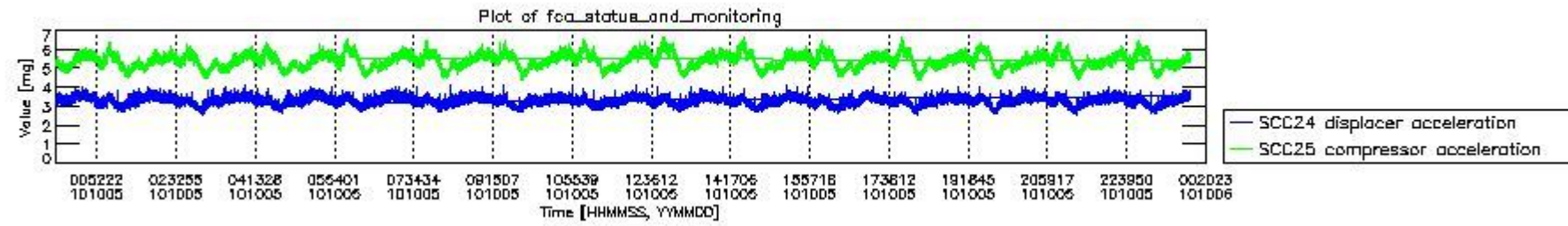
mipas\_daily\_report\_level0\_any\_version\_20101005\_7.PNG



mipas\_daily\_report\_level0\_any\_version\_20101005\_8.PNG



mipas\_daily\_report\_level0\_any\_version\_20101005\_9.PNG

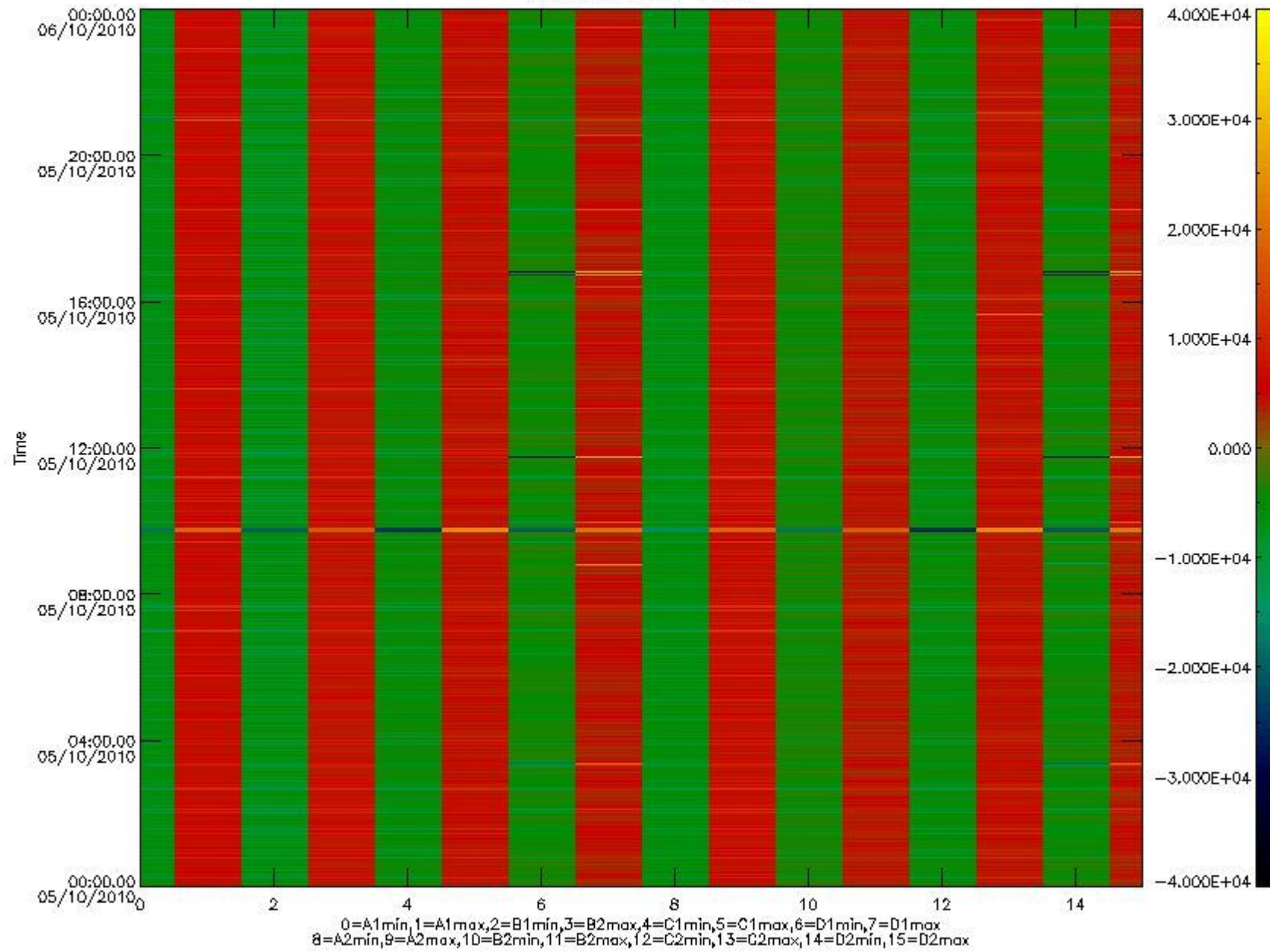


mipas\_daily\_report\_level0\_any\_version\_20101005\_10.PNG

The following table shows channel statistics for all channels for this day.

Channel	Min	Max	ADC
A1	-18006	19078	16bit
B1	-20366	17522	16bit
C1	-24473	24395	16bit
D1	-32768	32767	16bit
A2	-15662	19320	16bit
B2	-18181	17856	16bit
C2	-25450	25080	16bit
D2	-32768	32767	16bit

MIPNLOP\_MIPSOUPAC\_aux\_fields\_igm\_cal, channel statistics plot  
Colour indicates value.



mipas\_daily\_report\_level0\_any\_version\_20101005\_11.PNG

### 0.3 ADF monitoring

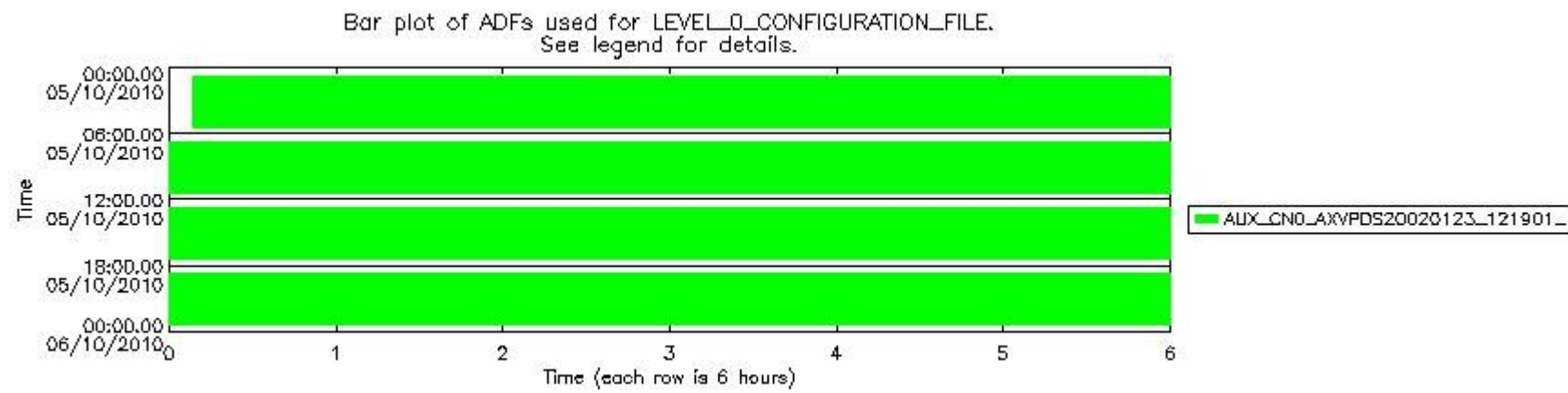
The use of ADFs is shown in two ways:

1. By means of two tables that can be used to find the ADF used for a specific product.
2. By means of plots that show changes in ADF using colours.

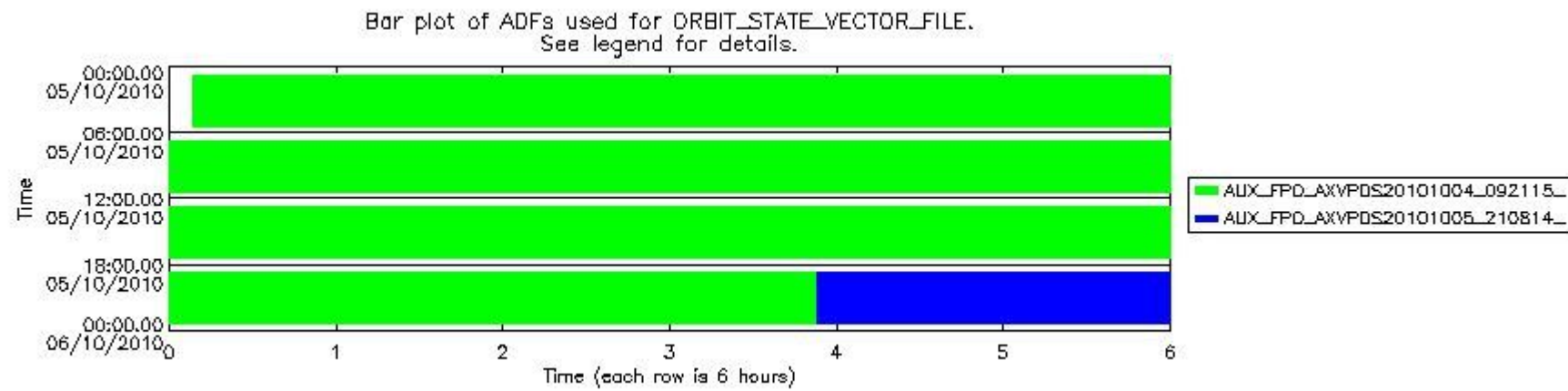
Number	ADF
0	AUX_CN0_AXVPDS20020123_121901_20020101_000000_20200101_000000
1	AUX_FPO_AXVPDS20101004_092115_20101003_194958_20101013_211609
2	AUX_FPO_AXVPDS20101005_210814_20101004_191820_20101014_204432

Number	Product name	#CN0	#FPO
--------	--------------	------	------

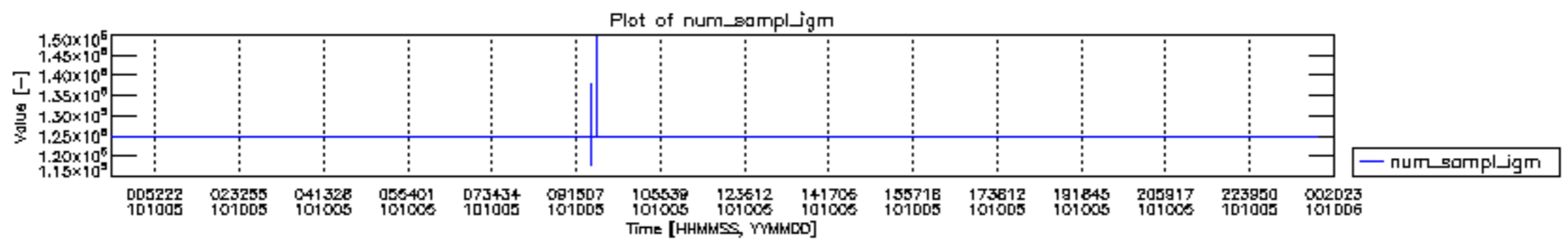
0	MIP_NL__0PNPDE20101005_000812_000059252093_00302_44945_2965.N1	0	1
1	MIP_NL__0PNPDE20101005_014550_000044982093_00303_44946_2966.N1	0	1
2	MIP_NL__0PNPDE20101005_030014_000061612093_00304_44947_2967.N1	0	1
3	MIP_NL__0PNPDE20101005_044222_000060582093_00305_44948_2968.N1	0	1
4	MIP_NL__0PNPDE20101005_204135_000043622093_00315_44958_2969.N1	0	1
5	MIP_NL__0PNPDE20101005_215310_000061732093_00315_44958_2970.N1	0	2
6	MIP_NL__0PNPDE20101005_233459_000061482093_00316_44959_2971.N1	0	2
7	MIP_NL__0PNPDK20101005_062247_000041052093_00306_44949_3029.N1	0	1
8	MIP_NL__0PNPDK20101005_072957_000061942093_00307_44950_3030.N1	0	1
9	MIP_NL__0PNPDK20101005_091237_000059632093_00308_44951_3031.N1	0	1
10	MIP_NL__0PNPDK20101005_105031_000060402093_00309_44952_3032.N1	0	1
11	MIP_NL__0PNPDK20101005_123012_000059622093_00310_44953_3033.N1	0	1
12	MIP_NL__0PNPDK20101005_140825_000059922093_00311_44954_3034.N1	0	1
13	MIP_NL__0PNPDK20101005_154708_000057972093_00312_44955_3035.N1	0	1
14	MIP_NL__0PNPDK20101005_172146_000061082093_00313_44956_3037.N1	0	1
15	MIP_NL__0PNPDK20101005_190230_000060602093_00314_44957_3038.N1	0	1

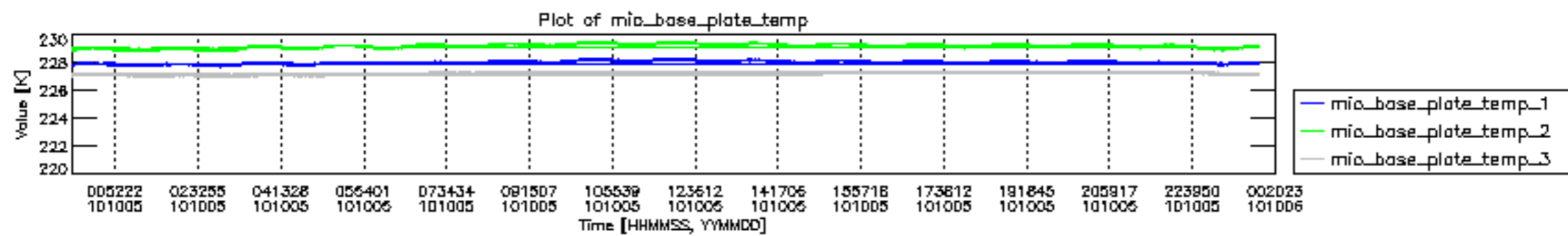


mipas\_daily\_report\_level0\_\_any\_version\_\_20101005\_12.PNG

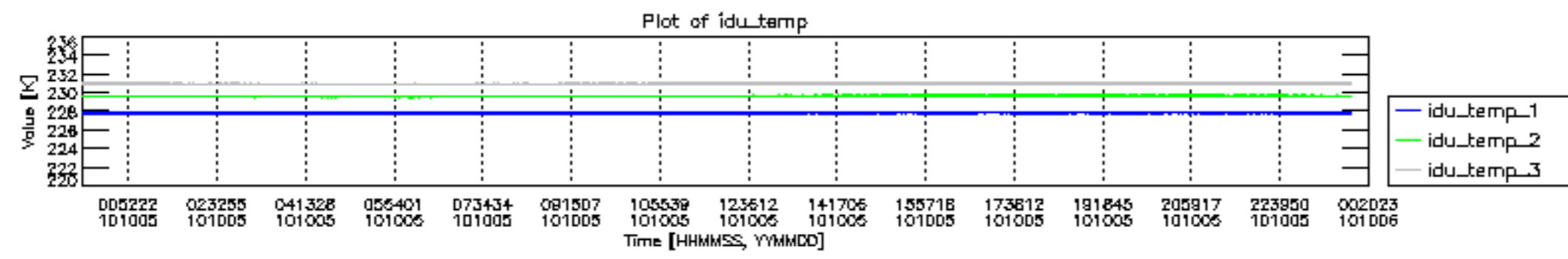


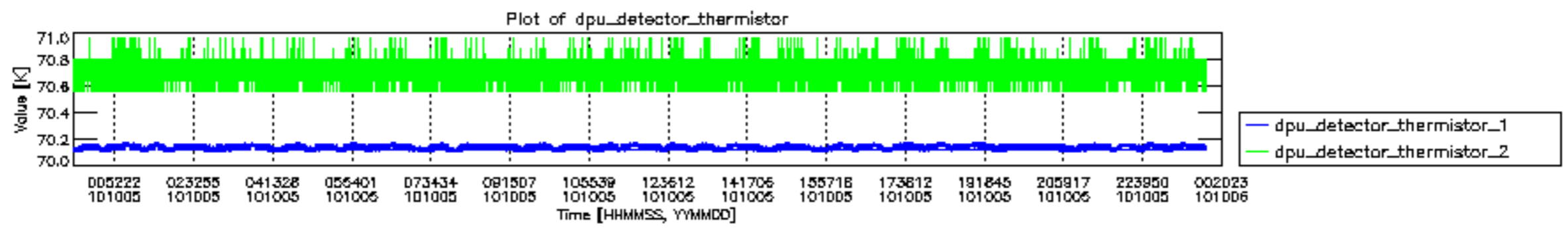
mipas\_daily\_report\_level0\_\_any\_version\_\_20101005\_13.PNG

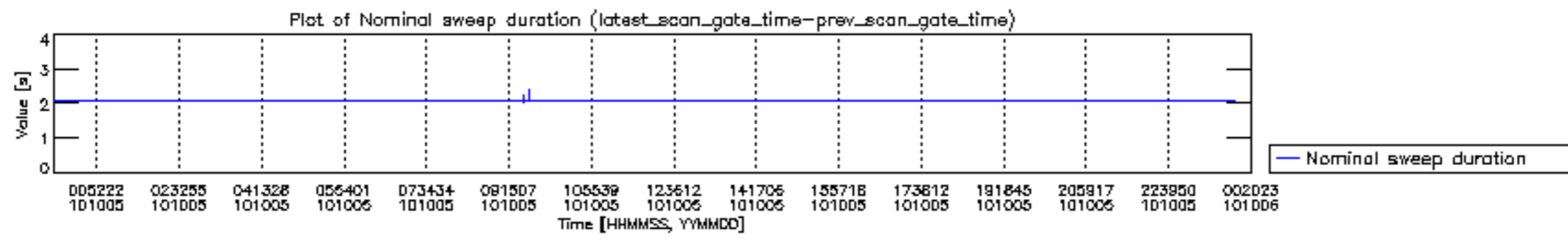


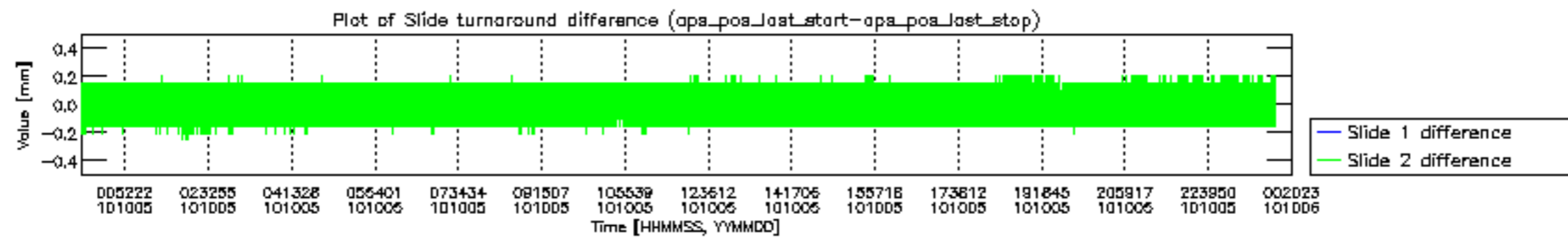


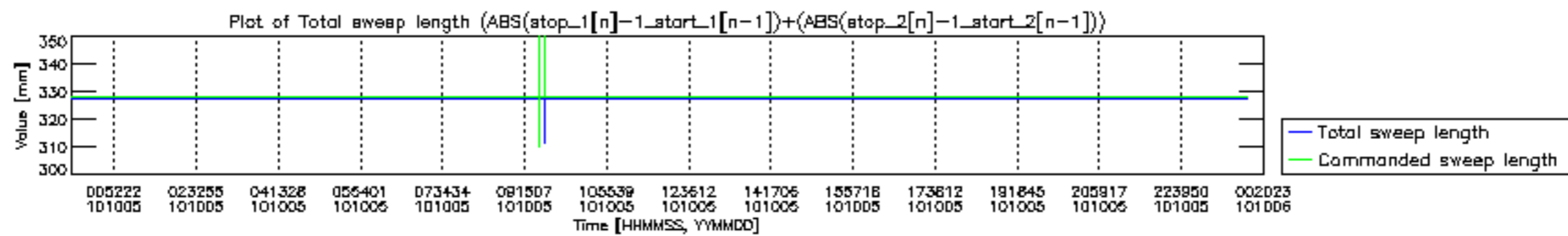


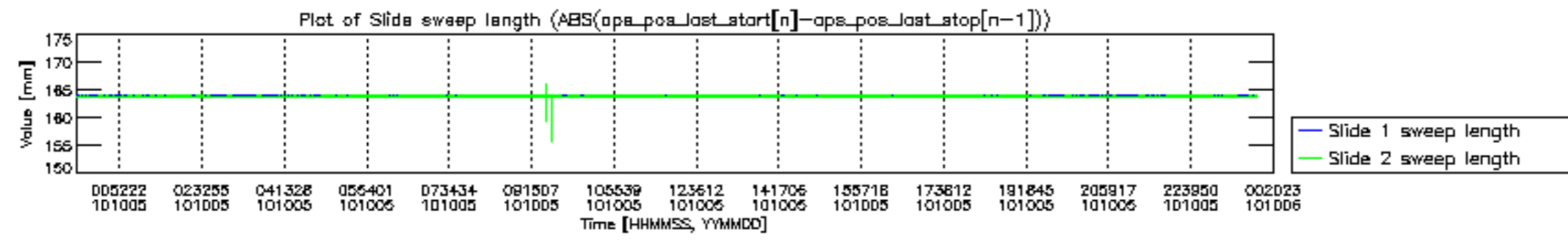


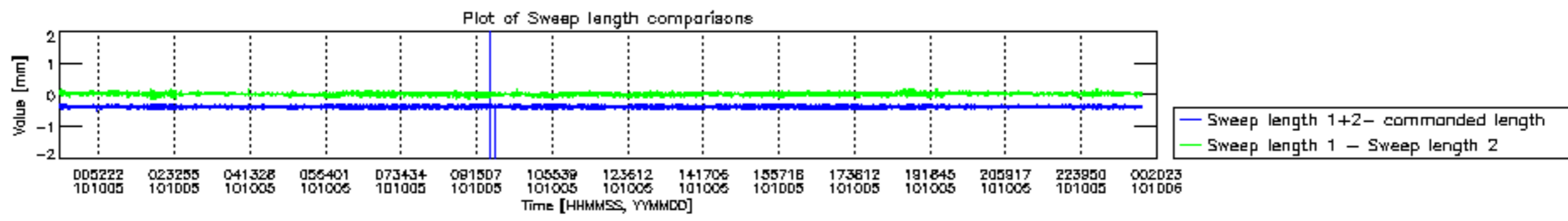


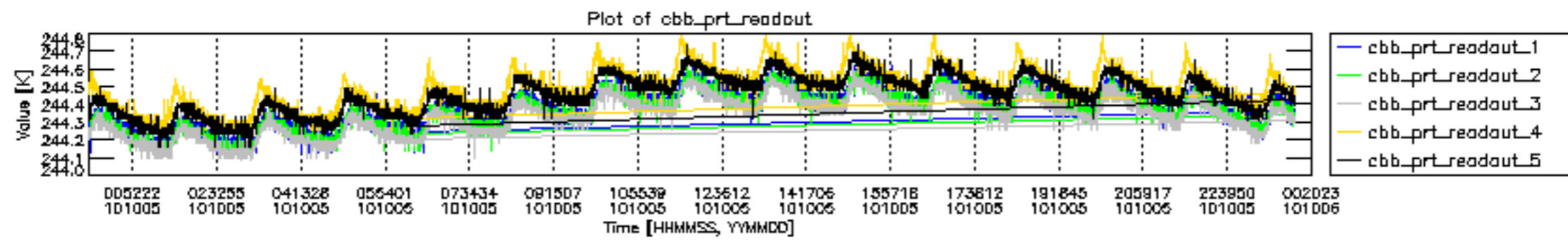




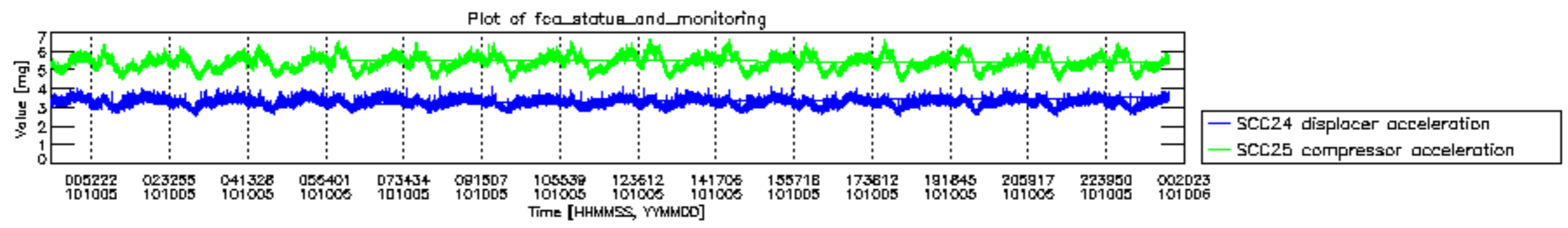




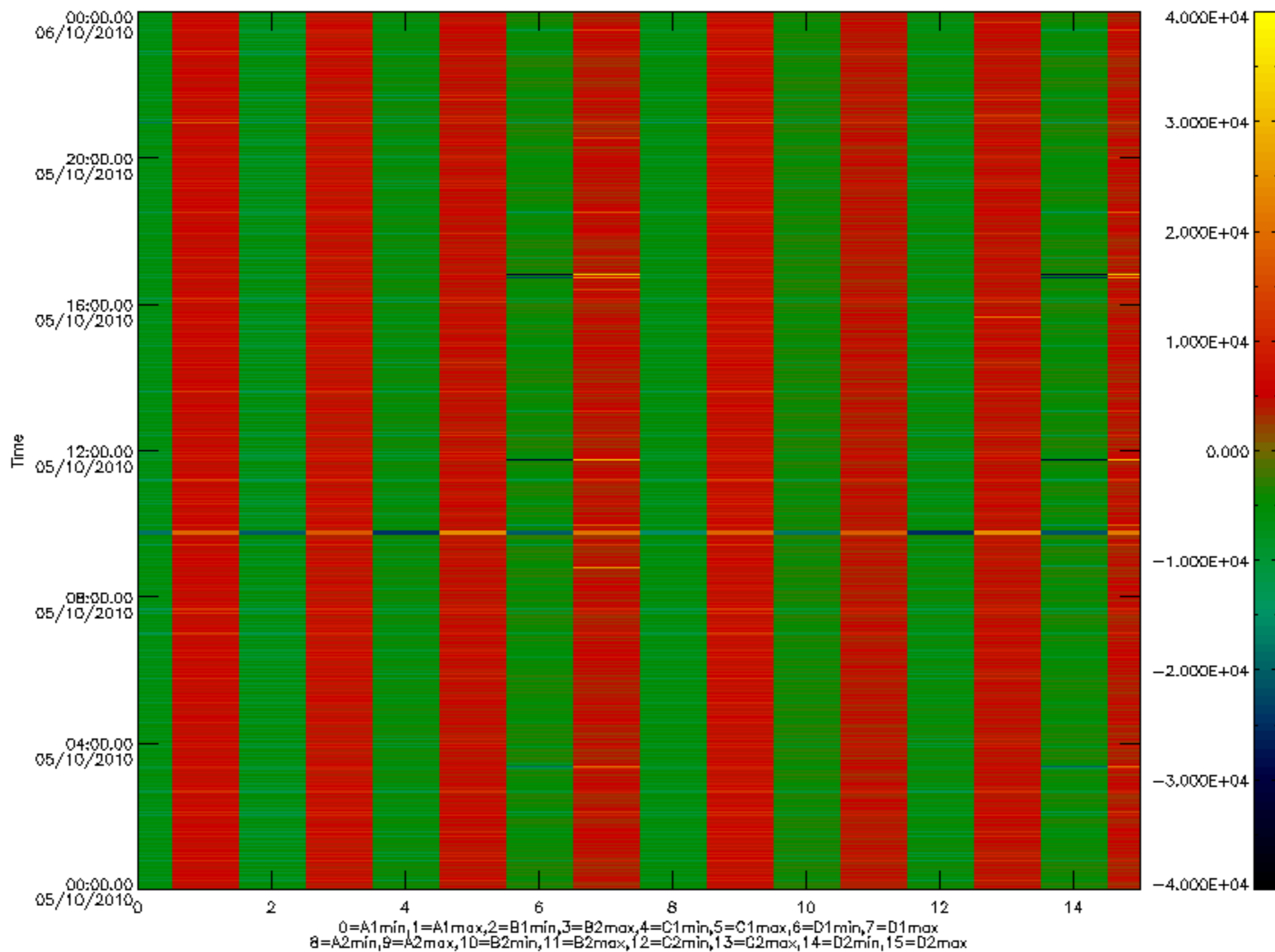


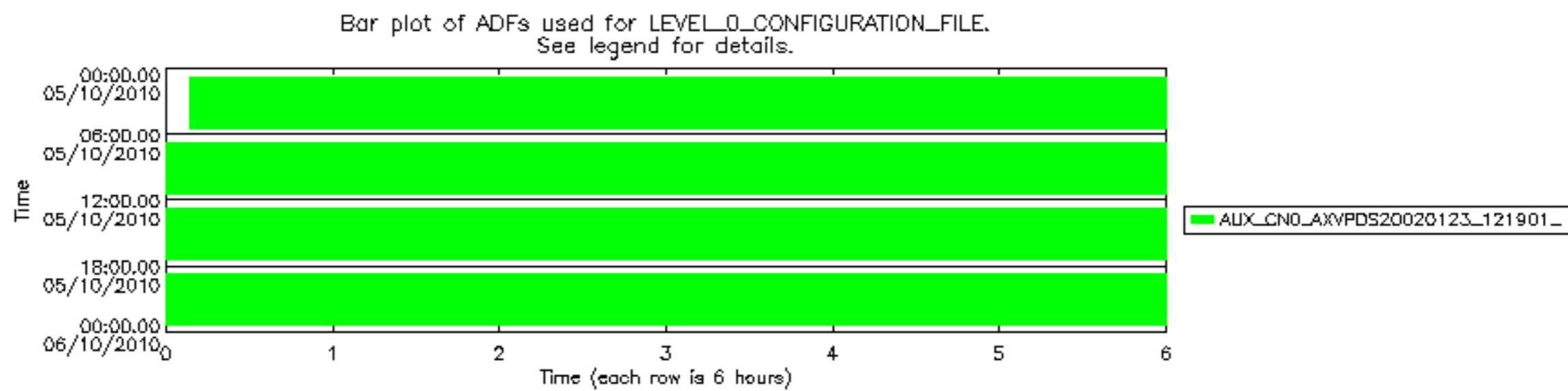






MIPNLOP\_MIPSOUPAC\_aux\_fields\_igm\_cal, channel statistics plot  
 Colour indicates value.





Bar plot of ADFs used for ORBIT\_STATE\_VECTOR\_FILE.  
See legend for details.

