

## 0. MIPAS Daily Report for level 0 products

### [0.1 General Info](#)

### [0.2 Instrument Operational Performance Parameters](#)

### [0.3 ADF monitoring](#)

## 0.1 General Info

This report contains a daily analysis on parameters extracted from MIPAS level 0 data (The MIP\_NL\_\_0P product).

### 0.1.1 Report summary

The table below shows general characteristics of the data that are included into this report.

Item	Value
Report version	v1.5 2008-02-08
Time of report generation	08OCT2010 05:23:23
Data source version	<any version>
Processing scope for products	03OCT2010 00:00:00 to 04OCT2010 00:00:00
Start time of first product within scope	03OCT2010 01:10:43
Stop time of last product within scope	03OCT2010 20:06:00
Total number of level 0 products	15
Number of level 0 products with errors	0

### 0.1.2 Product Quality Indicators per product

The following table shows a summary for each product used in this report.

#	Product name	Start time	Stop time	Prod err	ISP err sign	ISP miss sign	ISP disc sign	rs sign
0	MIP_NL__0PNPDE20101003_011043_000096892093_00274_44917_2950.N1	03OCT2010 01:10:43	03OCT2010 03:52:12	0	0	0	0	0
1	MIP_NL__0PNPDE20101003_014301_000077502093_00275_44918_2953.N1	03OCT2010 01:43:01	03OCT2010 03:52:12	0	0	0	0	0
2	MIP_NL__0PNPDE20101003_035138_000069172093_00276_44919_2951.N1	03OCT2010 03:51:38	03OCT2010 05:46:55	0	0	0	0	0
3	MIP_NL__0PNPDE20101003_054624_000061232093_00277_44920_2954.N1	03OCT2010 05:46:24	03OCT2010 07:28:27	0	0	0	0	0
4	MIP_NL__0PNPDE20101003_200418_000043682093_00286_44929_2955.N1	03OCT2010 20:04:18	03OCT2010 21:17:06	0	0	0	0	0
5	MIP_NL__0PNPDE20101003_211559_000062132093_00286_44929_2956.N1	03OCT2010 21:15:59	03OCT2010 22:59:32	0	0	0	0	0
6	MIP_NL__0PNPDE20101003_225832_000060982093_00287_44930_2957.N1	03OCT2010 22:58:32	04OCT2010 00:40:10	0	0	0	0	0
7	MIP_NL__0PNPDK20101003_072756_000039762093_00278_44921_3011.N1	03OCT2010 07:27:56	03OCT2010 08:34:11	0	0	0	0	0
8	MIP_NL__0PNPDK20101003_083254_000061852093_00279_44922_3012.N1	03OCT2010 08:32:54	03OCT2010 10:15:58	0	0	0	0	0
9	MIP_NL__0PNPDK20101003_101519_000059162093_00280_44923_3013.N1	03OCT2010 10:15:19	03OCT2010 11:53:55	0	0	0	0	0
10	MIP_NL__0PNPDK20101003_115252_000060372093_00281_44924_3014.N1	03OCT2010 11:52:52	03OCT2010 13:33:30	0	0	0	0	0
11	MIP_NL__0PNPDK20101003_133233_000058662093_00282_44925_3016.N1	03OCT2010 13:32:33	03OCT2010 15:10:20	0	0	0	0	0
12	MIP_NL__0PNPDK20101003_150837_000060732093_00283_44926_3017.N1	03OCT2010 15:08:37	03OCT2010 16:49:50	0	0	0	0	0
13	MIP_NL__0PNPDK20101003_164845_000058772093_00284_44927_3018.N1	03OCT2010 16:48:45	03OCT2010 18:26:42	0	0	0	0	0
14	MIP_NL__0PNPDK20101003_182600_000060002093_00285_44928_3019.N1	03OCT2010 18:26:00	03OCT2010 20:06:00	0	0	0	0	0

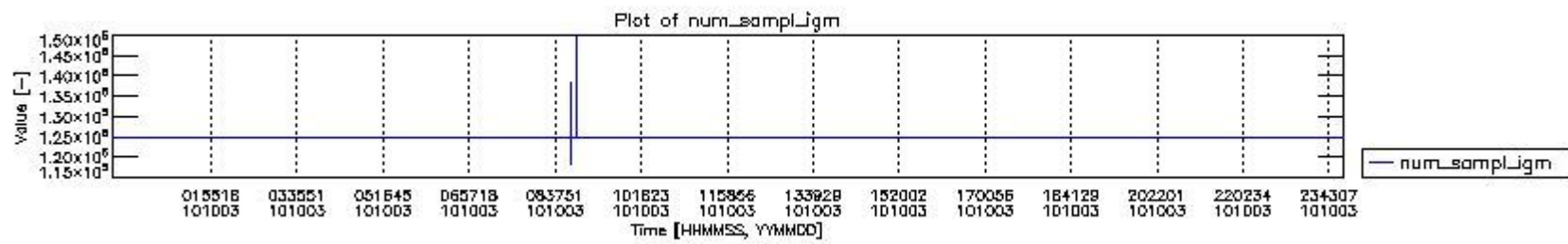
## 0.2 Instrument Operational Performance Parameters

The following plots give an overview of various instrument parameters for this day. The instrument parameters are part of the auxiliary data field within the source packets of the MIP\_NL\_\_0P product. The auxiliary data is normally included twice per interferogram. Note that only the first packet is currently included in monitoring.

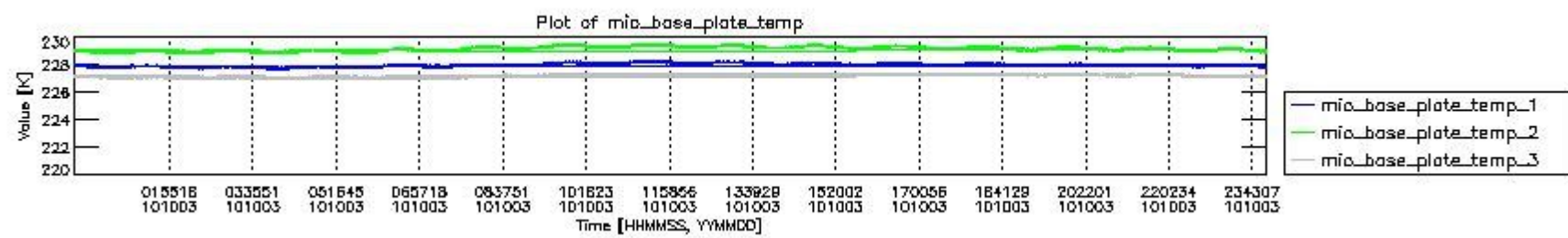
The following table shows the counts of various interferogram number of samples

Number of igm samples	Count [#]	Count [%]
118387	1	0.0024017100
124800	38682	92.902947
124803	2949	7.0826428

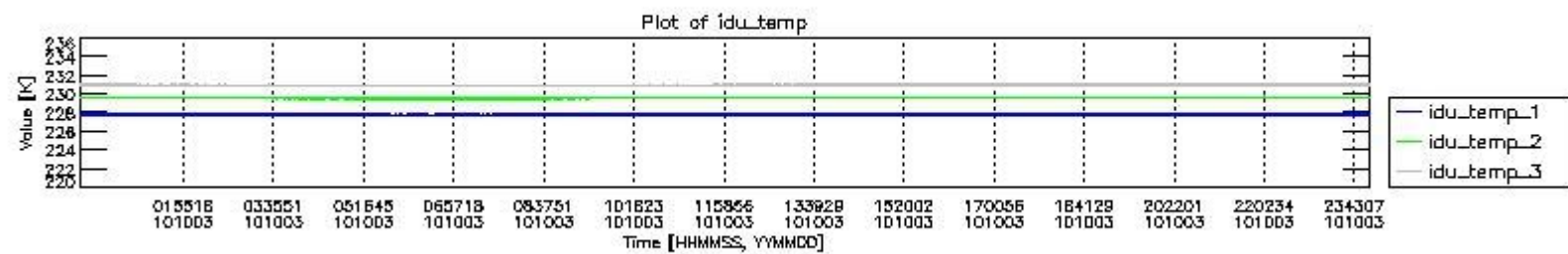
127233	1	0.0024017100
132106	1	0.0024017100
138519	1	0.0024017100
147365	1	0.0024017100
149798	1	0.0024017100



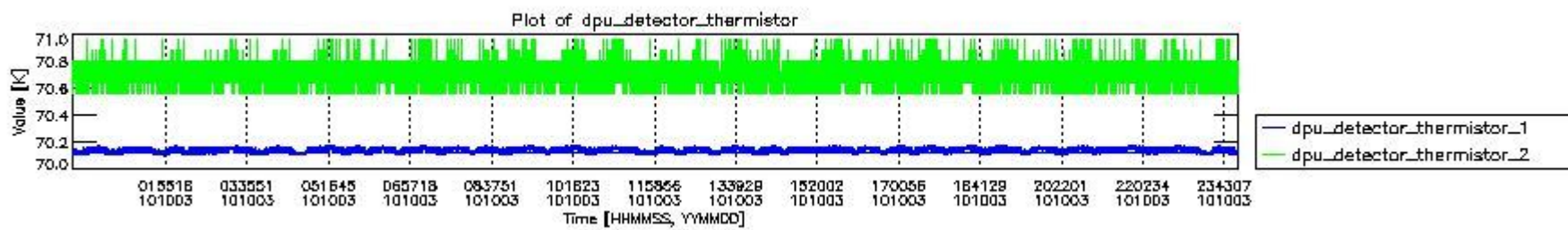
mipas\_daily\_report\_level0\_any\_version\_20101003\_0.PNG



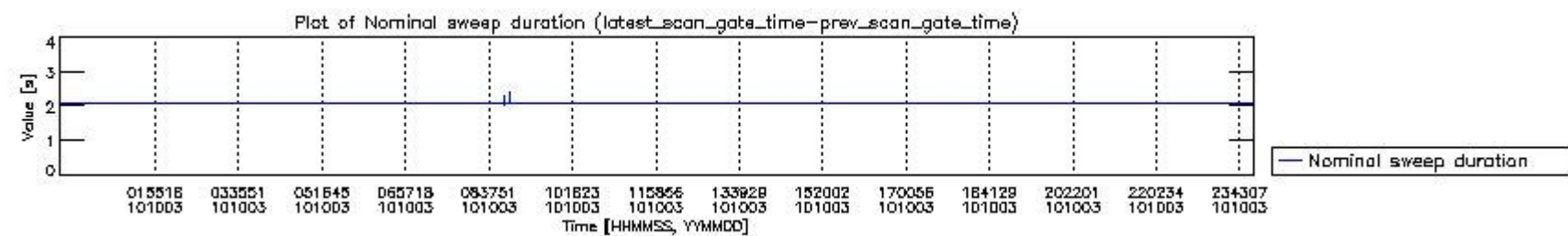
mipas\_daily\_report\_level0\_any\_version\_20101003\_1.PNG



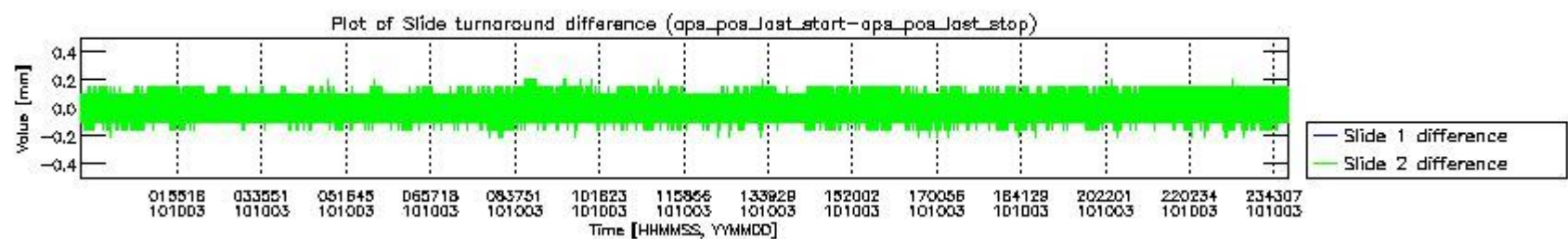
mipas\_daily\_report\_level0\_any\_version\_20101003\_2.PNG



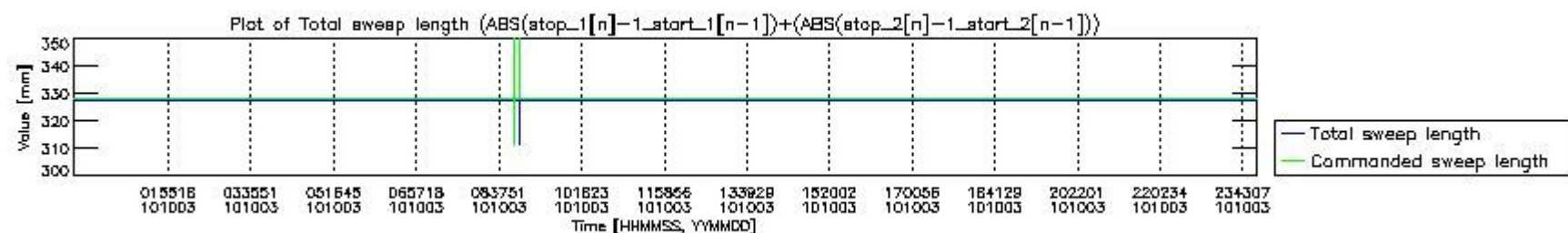
mipas\_daily\_report\_level0\_any\_version\_20101003\_3.PNG



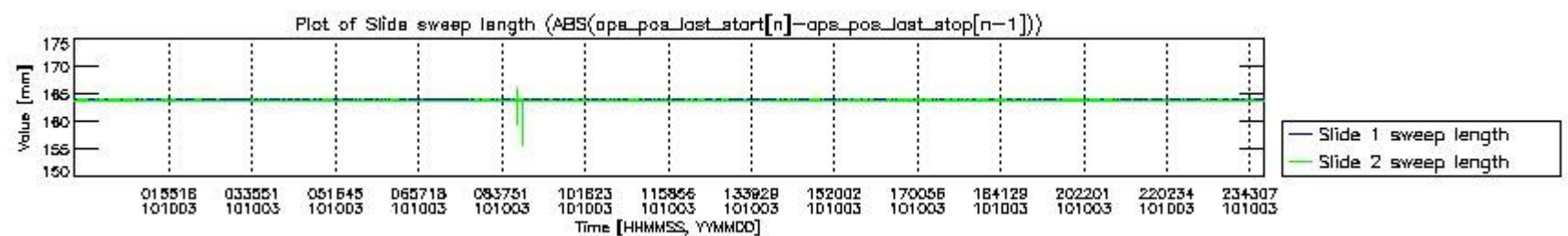
mipas\_daily\_report\_level0\_any\_version\_20101003\_4.PNG



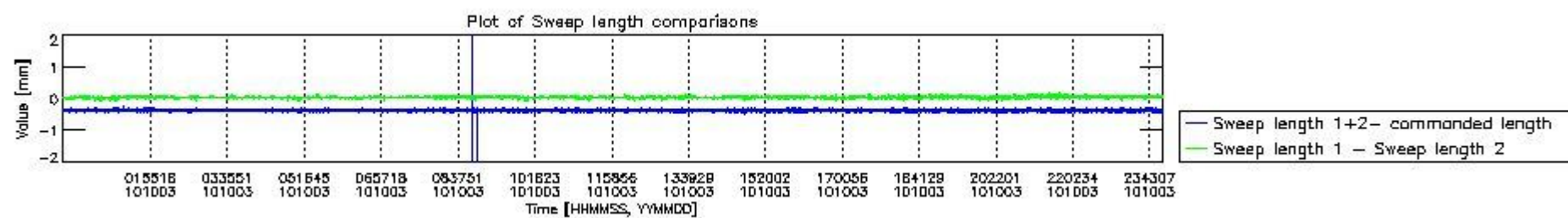
mipas\_daily\_report\_level0\_any\_version\_20101003\_5.PNG



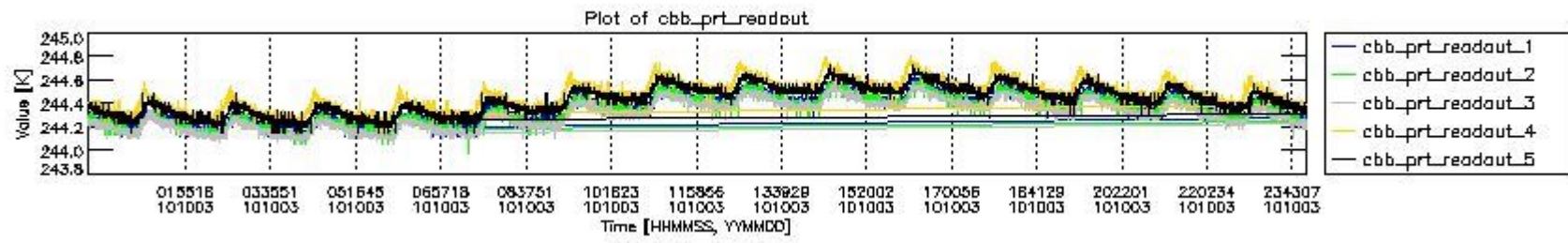
mipas\_daily\_report\_level0\_any\_version\_20101003\_6.PNG



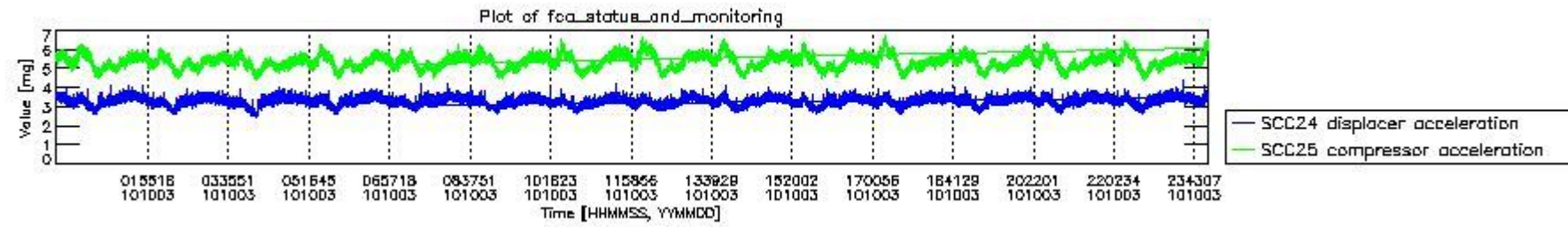
mipas\_daily\_report\_level0\_any\_version\_20101003\_7.PNG



mipas\_daily\_report\_level0\_any\_version\_20101003\_8.PNG



mipas\_daily\_report\_level0\_any\_version\_20101003\_9.PNG



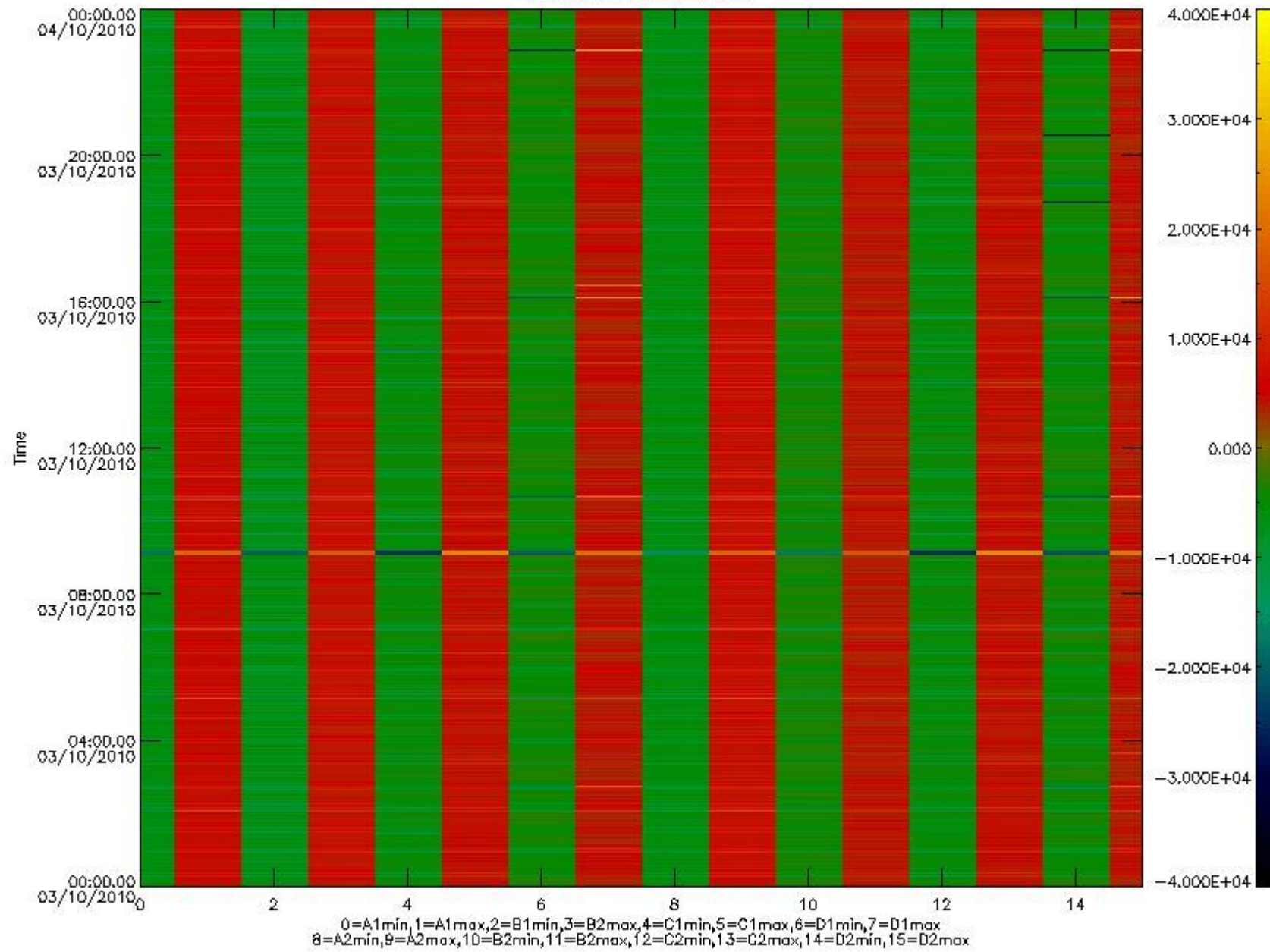
mipas\_daily\_report\_level0\_any\_version\_20101003\_10.PNG

The following table shows channel statistics for all channels for this day.

Channel	Min	Max	ADC
A1	-17991	19063	16bit
B1	-20325	17500	16bit
C1	-24409	24313	16bit
D1	-32768	32767	16bit
A2	-15656	19311	16bit
B2	-18141	17817	16bit
C2	-25410	25022	16bit
D2	-32768	32767	16bit



MIPNLOP\_MIPSOUPAC\_aux\_fields\_igm\_cal, channel statistics plot  
Colour indicates value.



mipas\_daily\_report\_level0\_any\_version\_20101003\_11.PNG

### 0.3 ADF monitoring

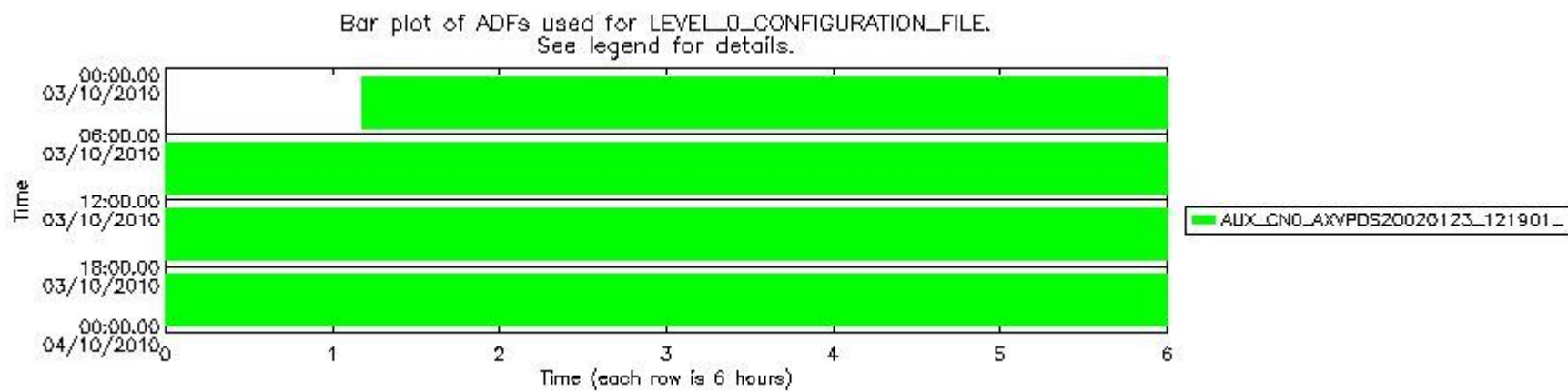
The use of ADFs is shown in two ways:

1. By means of two tables that can be used to find the ADF used for a specific product.
2. By means of plots that show changes in ADF using colours.

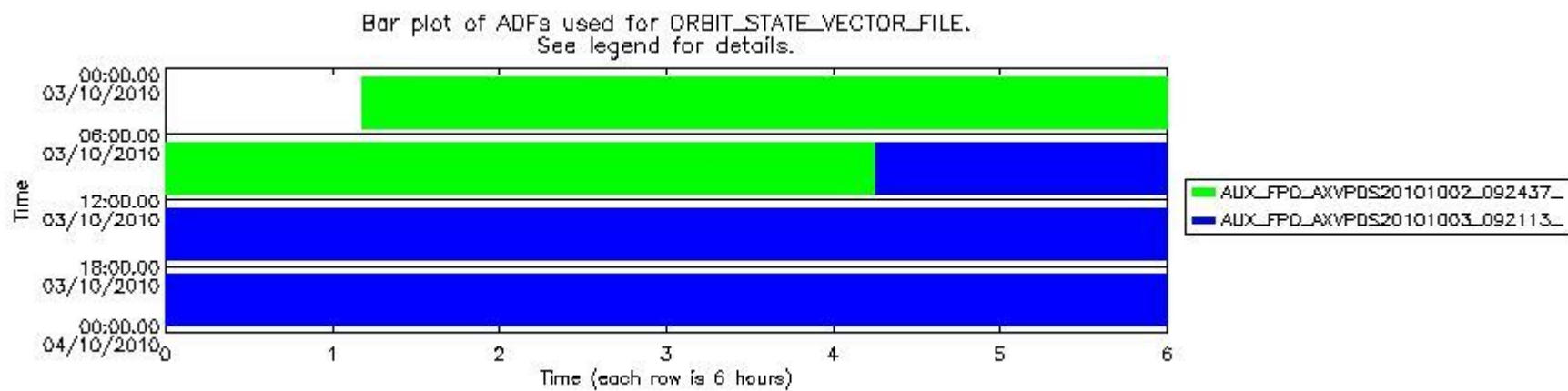
Number	ADF
0	AUX_CN0_AXVPDS20020123_121901_20020101_000000_20200101_000000
1	AUX_FPO_AXVPDS20101002_092437_20101001_191236_20101011_203848
2	AUX_FPO_AXVPDS20101003_092113_20101002_184059_20101012_200710

Number	Product name	#CN0	#FPO
--------	--------------	------	------

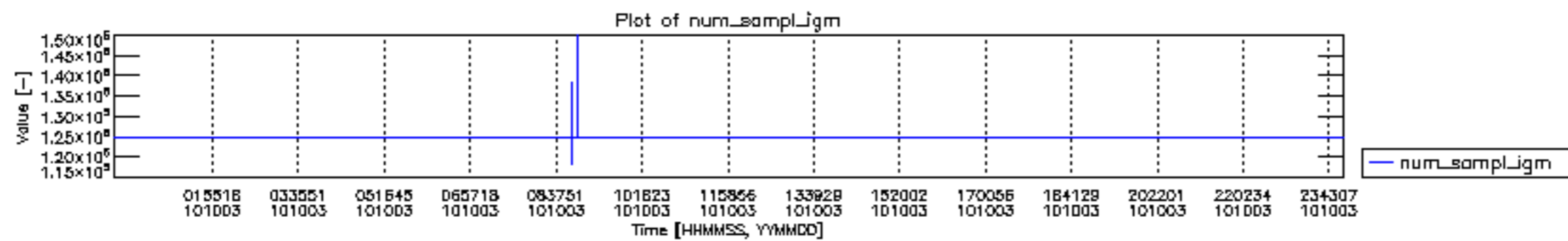
0	MIP_NL__0PNPDE20101003_011043_000096892093_00274_44917_2950.N1	0	1
1	MIP_NL__0PNPDE20101003_014301_000077502093_00275_44918_2953.N1	0	1
2	MIP_NL__0PNPDE20101003_035138_000069172093_00276_44919_2951.N1	0	1
3	MIP_NL__0PNPDE20101003_054624_000061232093_00277_44920_2954.N1	0	1
4	MIP_NL__0PNPDE20101003_200418_000043682093_00286_44929_2955.N1	0	2
5	MIP_NL__0PNPDE20101003_211559_000062132093_00286_44929_2956.N1	0	2
6	MIP_NL__0PNPDE20101003_225832_000060982093_00287_44930_2957.N1	0	2
7	MIP_NL__0PNPDK20101003_072756_000039762093_00278_44921_3011.N1	0	1
8	MIP_NL__0PNPDK20101003_083254_000061852093_00279_44922_3012.N1	0	1
9	MIP_NL__0PNPDK20101003_101519_000059162093_00280_44923_3013.N1	0	2
10	MIP_NL__0PNPDK20101003_115252_000060372093_00281_44924_3014.N1	0	2
11	MIP_NL__0PNPDK20101003_133233_000058662093_00282_44925_3016.N1	0	2
12	MIP_NL__0PNPDK20101003_150837_000060732093_00283_44926_3017.N1	0	2
13	MIP_NL__0PNPDK20101003_164845_000058772093_00284_44927_3018.N1	0	2
14	MIP_NL__0PNPDK20101003_182600_000060002093_00285_44928_3019.N1	0	2

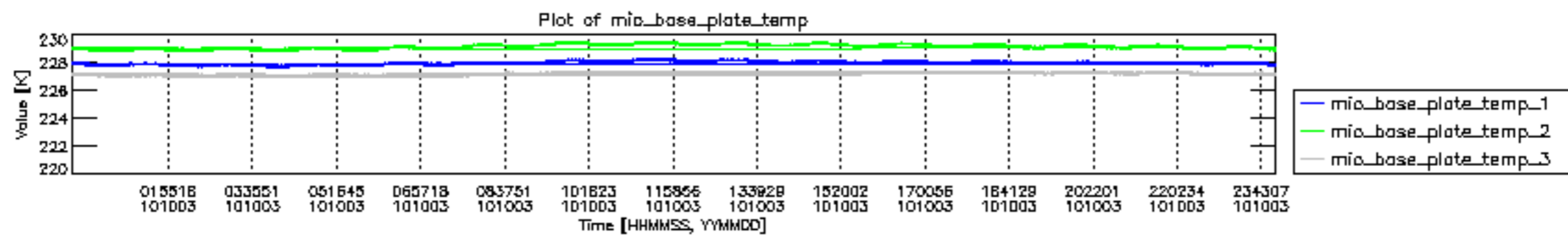


mipas\_daily\_report\_level0\_\_any\_version\_\_20101003\_12.PNG

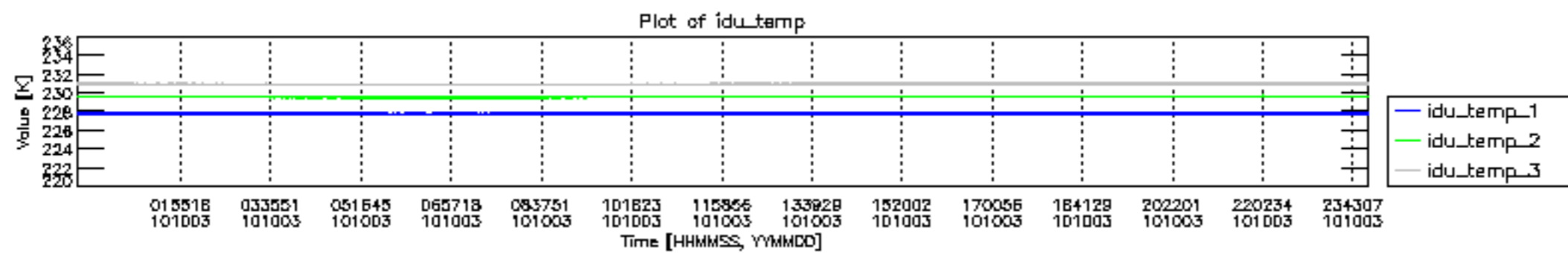


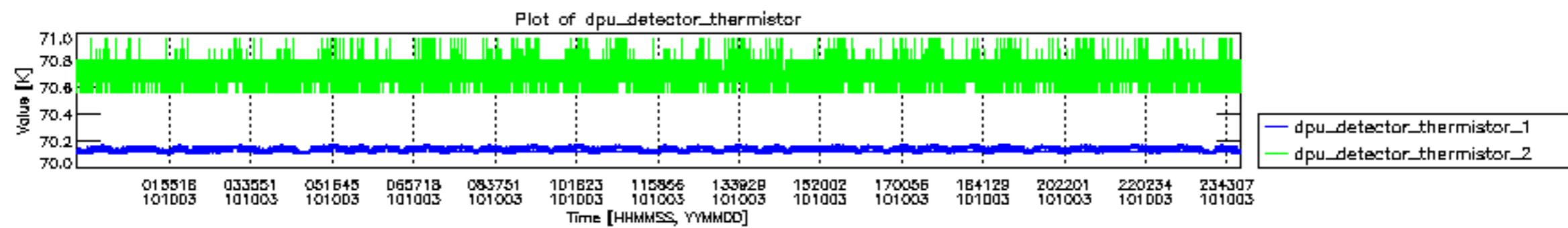
mipas\_daily\_report\_level0\_\_any\_version\_\_20101003\_13.PNG

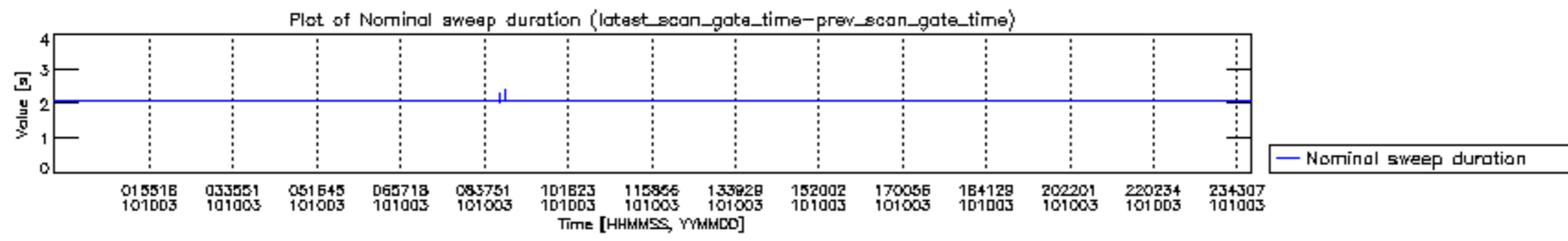


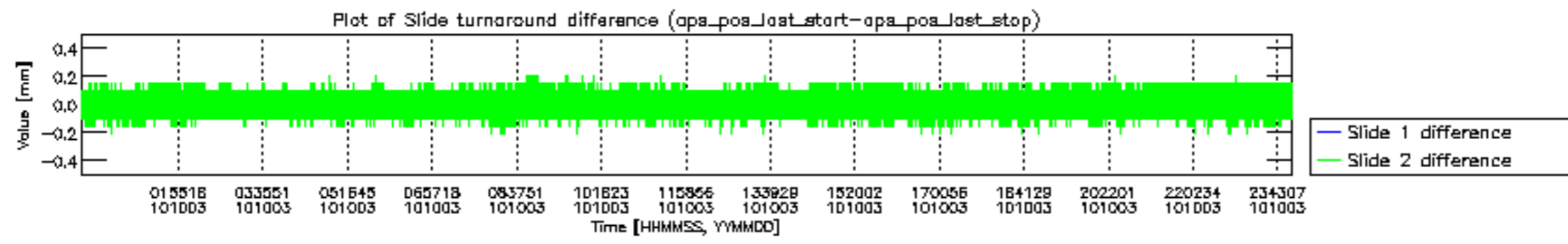


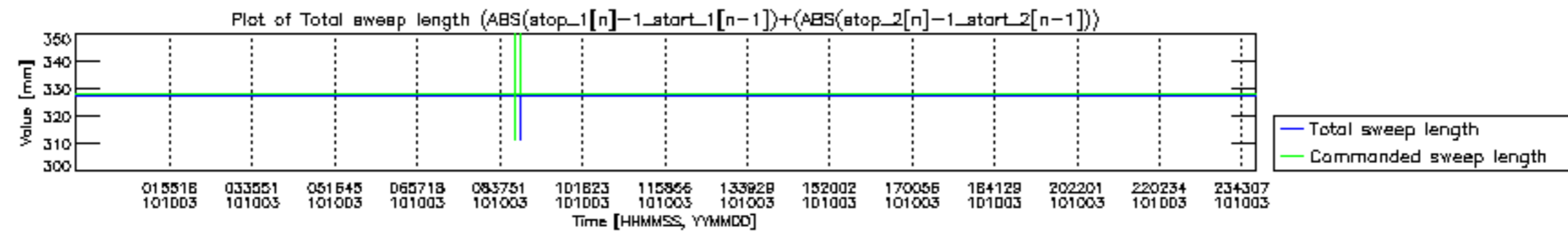




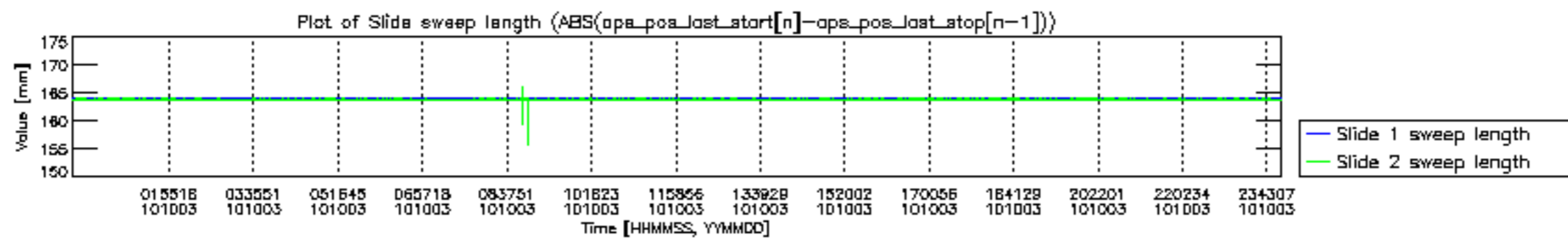


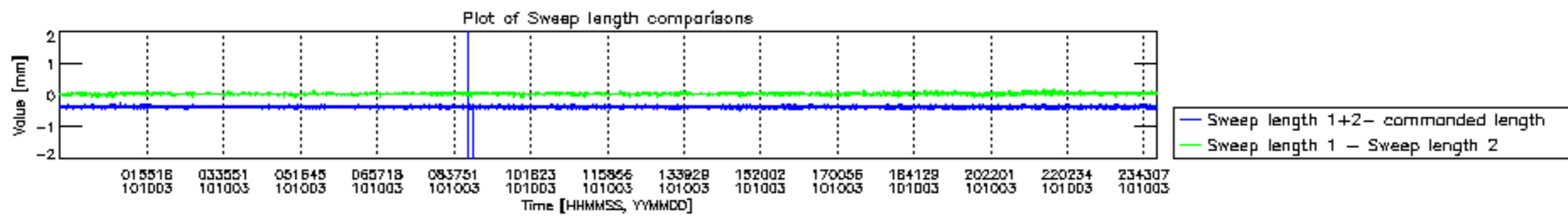


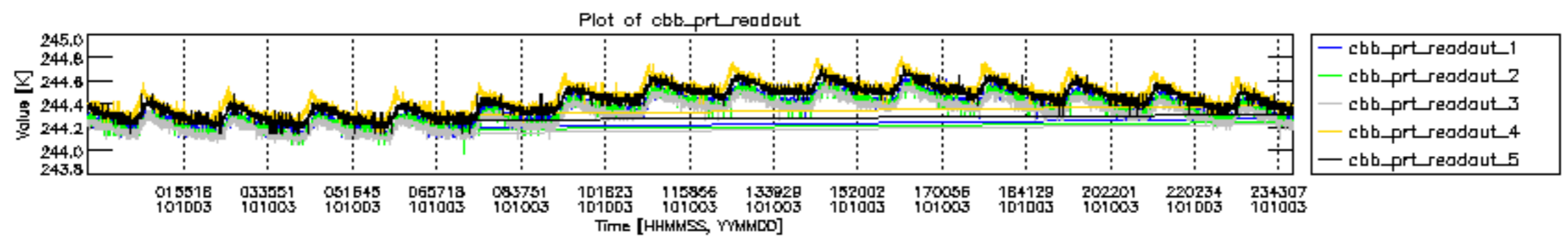


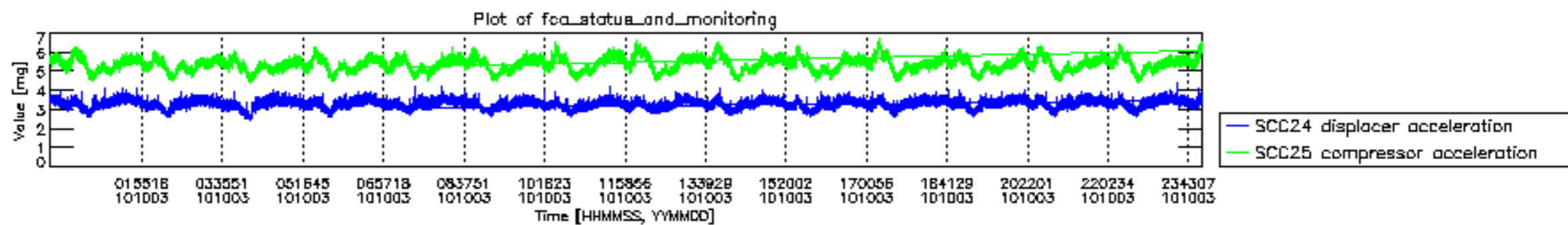












MIPNLOP\_MIPSOUPAC\_aux\_fields\_igm\_cal, channel statistics plot  
 Colour indicates value.

