

0. MIPAS Daily Report for level 0 products

[0.1 General Info](#)

[0.2 Instrument Operational Performance Parameters](#)

[0.3 ADF monitoring](#)

0.1 General Info

This report contains a daily analysis on parameters extracted from MIPAS level 0 data (The MIP_NL__0P product).

0.1.1 Report summary

The table below shows general characteristics of the data that are included into this report.

Item	Value
Report version	v1.5 2008-02-08
Time of report generation	07OCT2010 05:24:28
Data source version	<any version>
Processing scope for products	02OCT2010 00:00:00 to 03OCT2010 00:00:00
Start time of first product within scope	02OCT2010 00:02:57
Stop time of last product within scope	02OCT2010 20:39:01
Total number of level 0 products	17
Number of level 0 products with errors	0

0.1.2 Product Quality Indicators per product

The following table shows a summary for each product used in this report.

#	Product name	Start time	Stop time	Prod err	ISP err sign	ISP miss sign	ISP disc sign	rs sign
0	MIP_NL__0PNPDE20101002_000257_000009032093_00259_44902_2942.N1	02OCT2010 00:02:57	02OCT2010 00:17:59	0	0	0	0	0
1	MIP_NL__0PNPDE20101002_002207_000047062093_00260_44903_2943.N1	02OCT2010 00:22:07	02OCT2010 01:40:33	0	0	0	0	0
2	MIP_NL__0PNPDE20101002_013926_000045502093_00260_44903_2944.N1	02OCT2010 01:39:26	02OCT2010 02:55:16	0	0	0	0	0
3	MIP_NL__0PNPDE20101002_025443_000061232093_00261_44904_2945.N1	02OCT2010 02:54:43	02OCT2010 04:36:46	0	0	0	0	0
4	MIP_NL__0PNPDE20101002_043613_000060882093_00262_44905_2946.N1	02OCT2010 04:36:13	02OCT2010 06:17:40	0	0	0	0	0
5	MIP_NL__0PNPDE20101002_203815_000043502093_00272_44915_2947.N1	02OCT2010 20:38:15	02OCT2010 21:50:45	0	0	0	0	0
6	MIP_NL__0PNPDE20101002_214942_000061062093_00272_44915_2948.N1	02OCT2010 21:49:42	02OCT2010 23:31:29	0	0	0	0	0
7	MIP_NL__0PNPDE20101002_233028_000060792093_00273_44916_2949.N1	02OCT2010 23:30:28	03OCT2010 01:11:47	0	0	0	0	0
8	MIP_NL__0PNPDK20101002_061707_000040882093_00263_44906_3002.N1	02OCT2010 06:17:07	02OCT2010 07:25:15	0	0	0	0	0
9	MIP_NL__0PNPDK20101002_072413_000062172093_00264_44907_3003.N1	02OCT2010 07:24:13	02OCT2010 09:07:50	0	0	0	0	0
10	MIP_NL__0PNPDK20101002_090706_000059842093_00265_44908_3004.N1	02OCT2010 09:07:06	02OCT2010 10:46:50	0	0	0	0	0
11	MIP_NL__0PNPDK20101002_104600_000060022093_00266_44909_3005.N1	02OCT2010 10:46:00	02OCT2010 12:26:02	0	0	0	0	0
12	MIP_NL__0PNPDK20101002_122448_000059982093_00267_44910_3006.N1	02OCT2010 12:24:48	02OCT2010 14:04:46	0	0	0	0	0
13	MIP_NL__0PNPDK20101002_140350_000058622093_00268_44911_3007.N1	02OCT2010 14:03:50	02OCT2010 15:41:32	0	0	0	0	0
14	MIP_NL__0PNPDK20101002_154033_000059812093_00269_44912_3008.N1	02OCT2010 15:40:33	02OCT2010 17:20:15	0	0	0	0	0
15	MIP_NL__0PNPDK20101002_171841_000059352093_00270_44913_3009.N1	02OCT2010 17:18:41	02OCT2010 18:57:36	0	0	0	0	0
16	MIP_NL__0PNPDK20101002_185702_000061192093_00271_44914_3010.N1	02OCT2010 18:57:02	02OCT2010 20:39:01	0	0	0	0	0

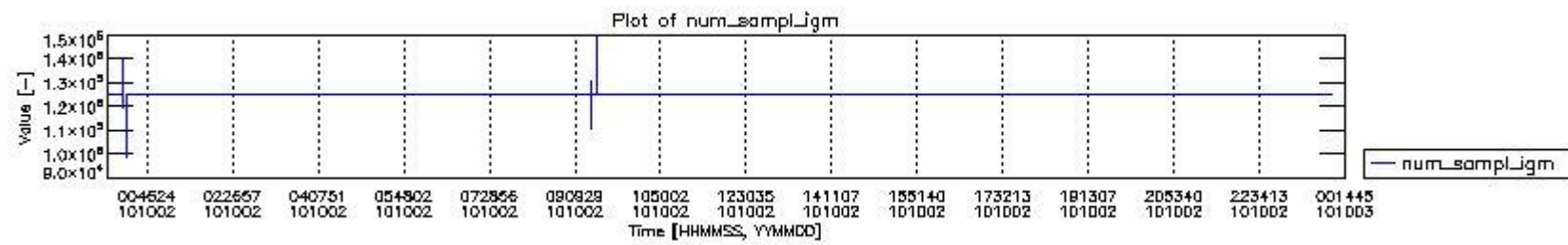
0.2 Instrument Operational Performance Parameters

The following plots give an overview of various instrument parameters for this day. The instrument parameters are part of the auxiliary data field within the source packets of the MIP_NL__0P product. The auxiliary data is normally included twice per interferogram. Note that only the first packet is currently included in monitoring.

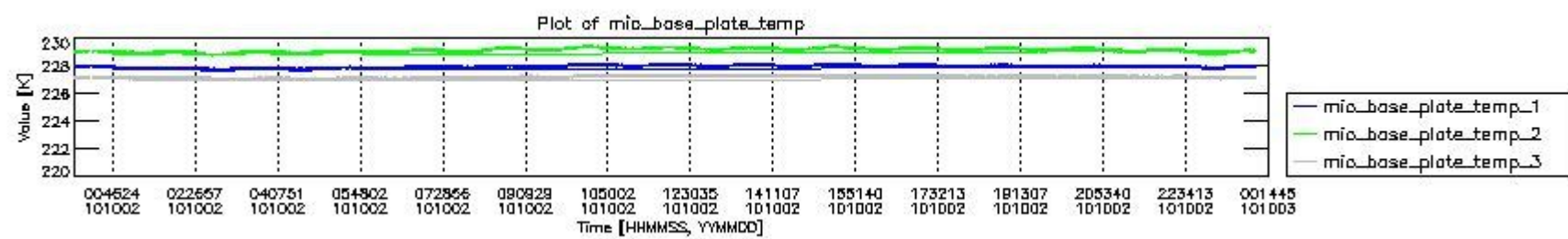
The following table shows the counts of various interferogram number of samples

Number of igm samples	Count [#]	Count [%]
98699	1	0.0024080719

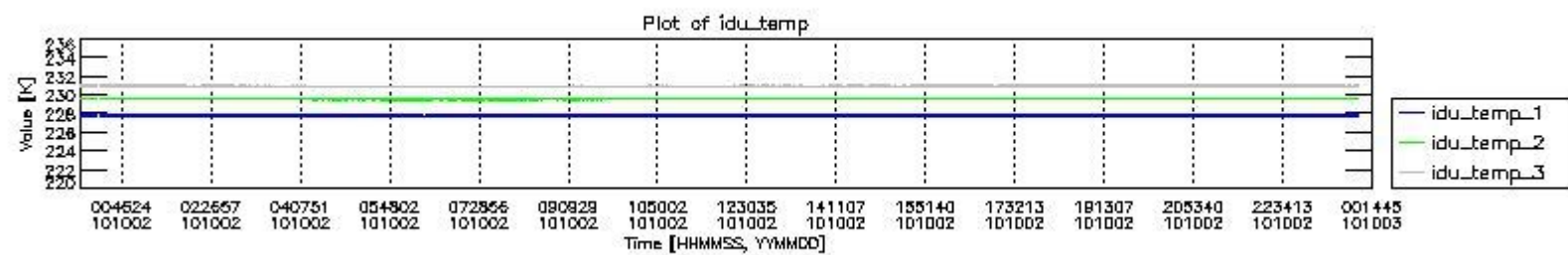
111027	1	0.0024080719
117386	1	0.0024080719
119799	1	0.0024080719
123102	1	0.0024080719
123951	1	0.0024080719
124800	38569	92.876923
124803	2946	7.0941797
127233	1	0.0024080719
131159	1	0.0024080719
134930	1	0.0024080719
139931	1	0.0024080719
147365	1	0.0024080719
149798	1	0.0024080719



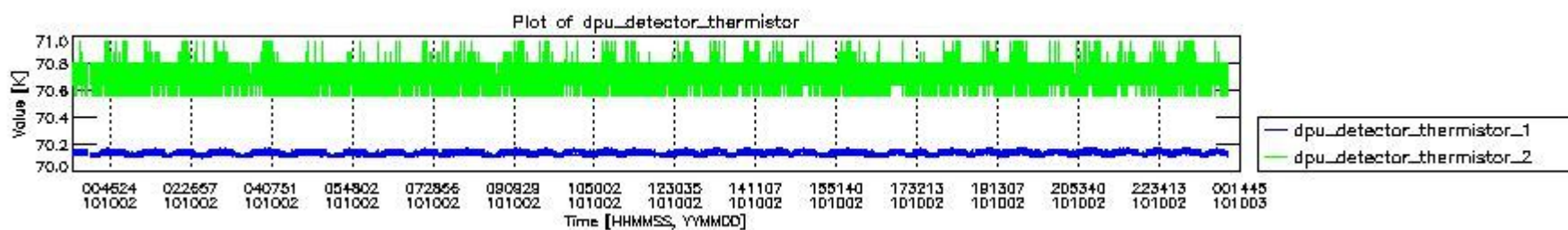
mipas_daily_report_level0_any_version_20101002_0.PNG



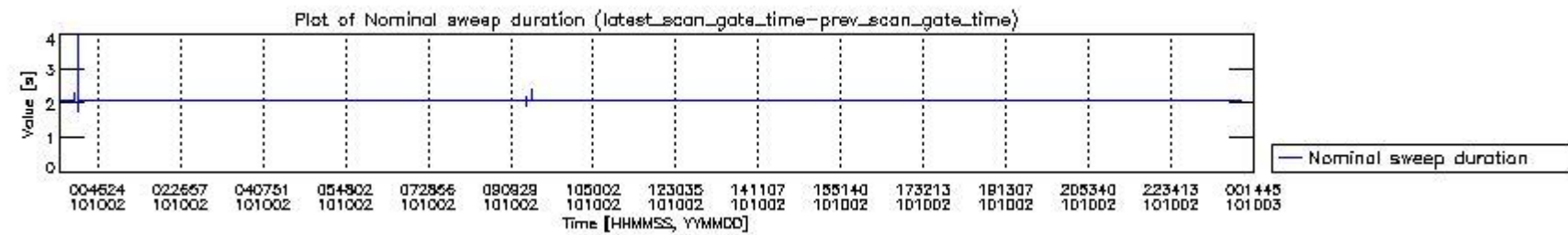
mipas_daily_report_level0_any_version_20101002_1.PNG



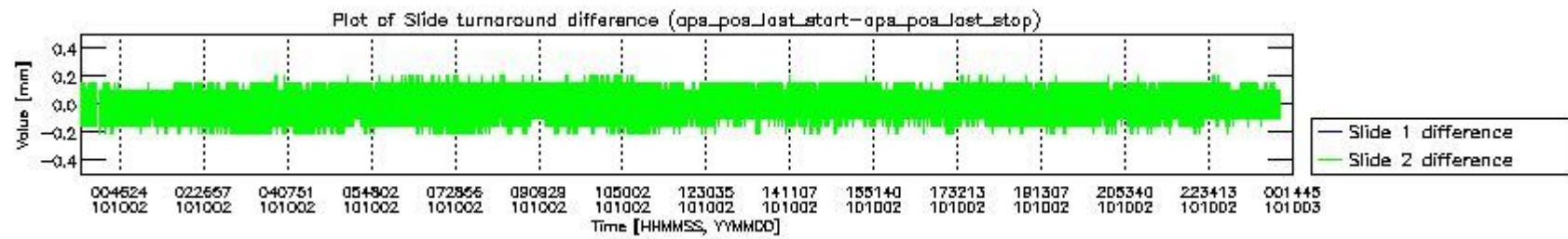
mipas_daily_report_level0_any_version_20101002_2.PNG



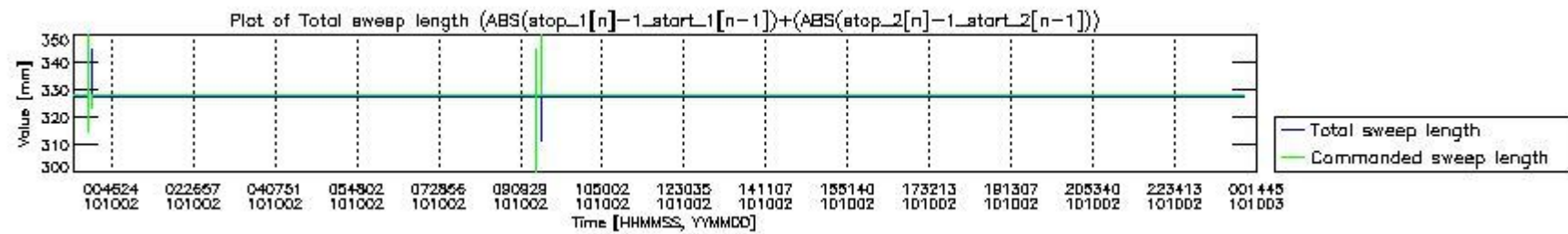
mipas_daily_report_level0_any_version_20101002_3.PNG



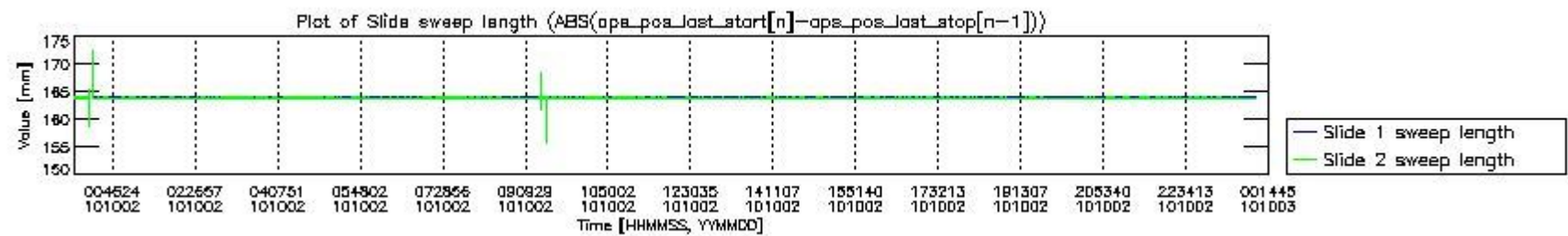
mipas_daily_report_level0_any_version_20101002_4.PNG



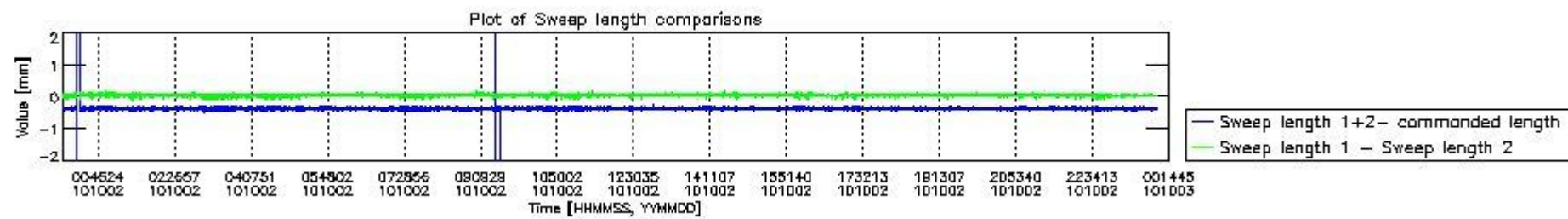
mipas_daily_report_level0_any_version_20101002_5.PNG



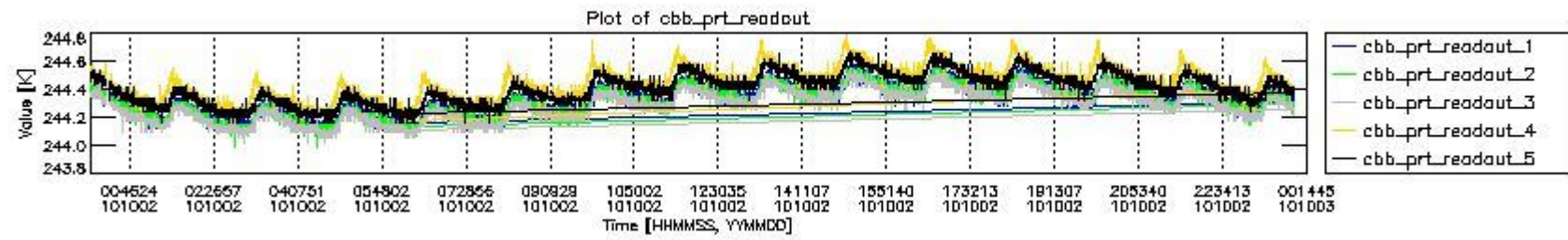
mipas_daily_report_level0_any_version_20101002_6.PNG



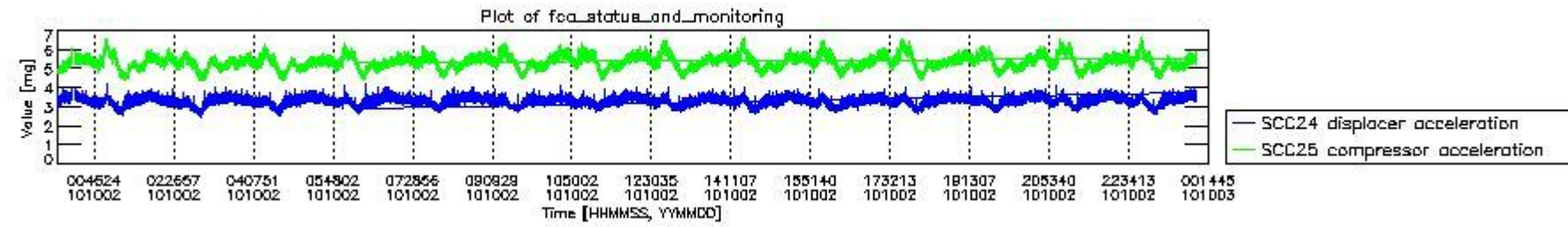
mipas_daily_report_level0_any_version_20101002_7.PNG



mipas_daily_report_level0_any_version_20101002_8.PNG



mipas_daily_report_level0_any_version_20101002_9.PNG

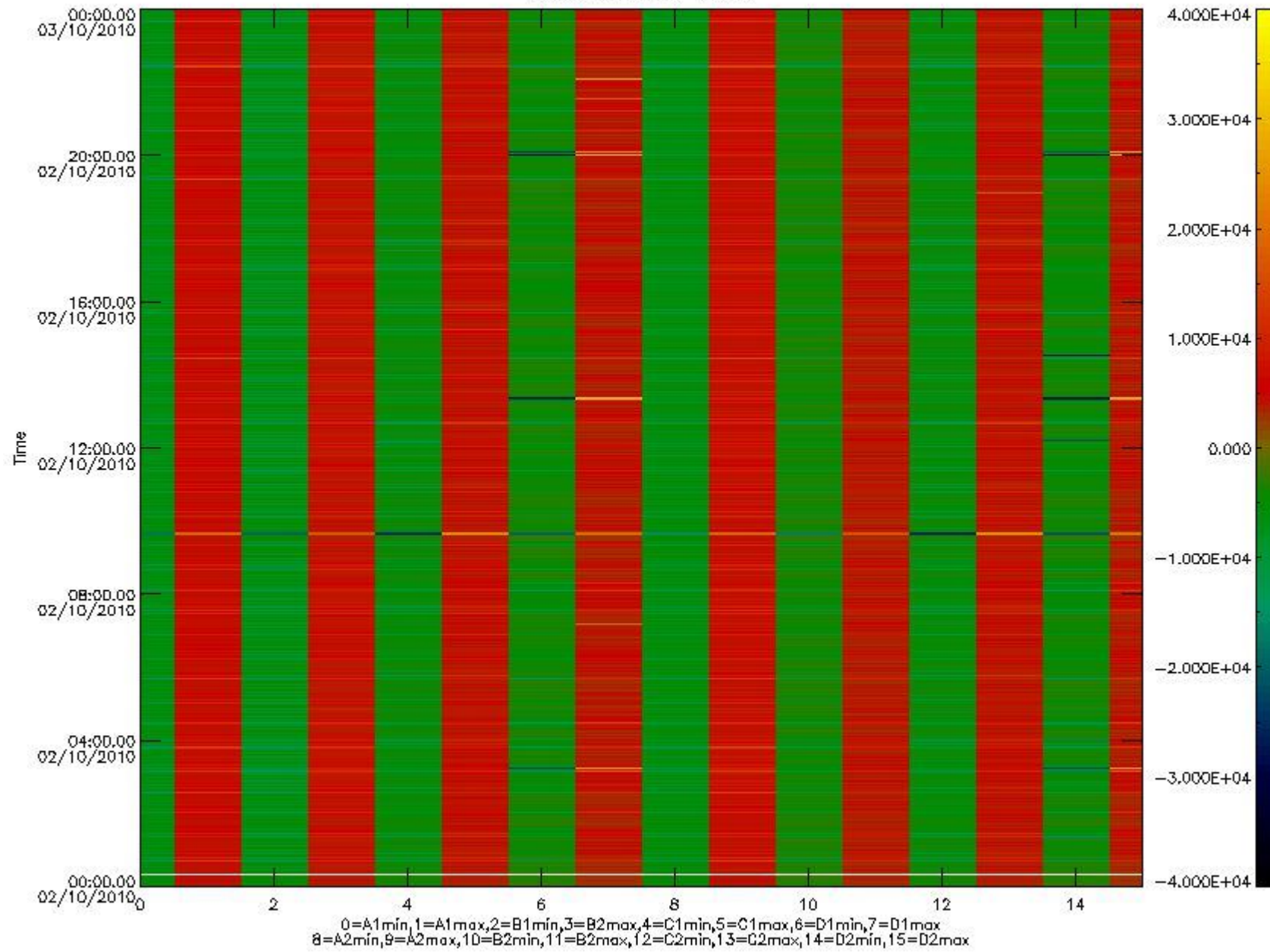


mipas_daily_report_level0_any_version_20101002_10.PNG

The following table shows channel statistics for all channels for this day.

Channel	Min	Max	ADC
A1	-17992	19043	16bit
B1	-20335	17497	16bit
C1	-24410	24373	16bit
D1	-32768	32767	16bit
A2	-15658	19306	16bit
B2	-18131	17832	16bit
C2	-25377	25054	16bit
D2	-32768	32767	16bit

MIPNLOP_MIPSOUPAC_aux_fields_igm_cal, channel statistics plot
Colour indicates value.



mipas_daily_report_level0_any_version_20101002_11.PNG

0.3 ADF monitoring

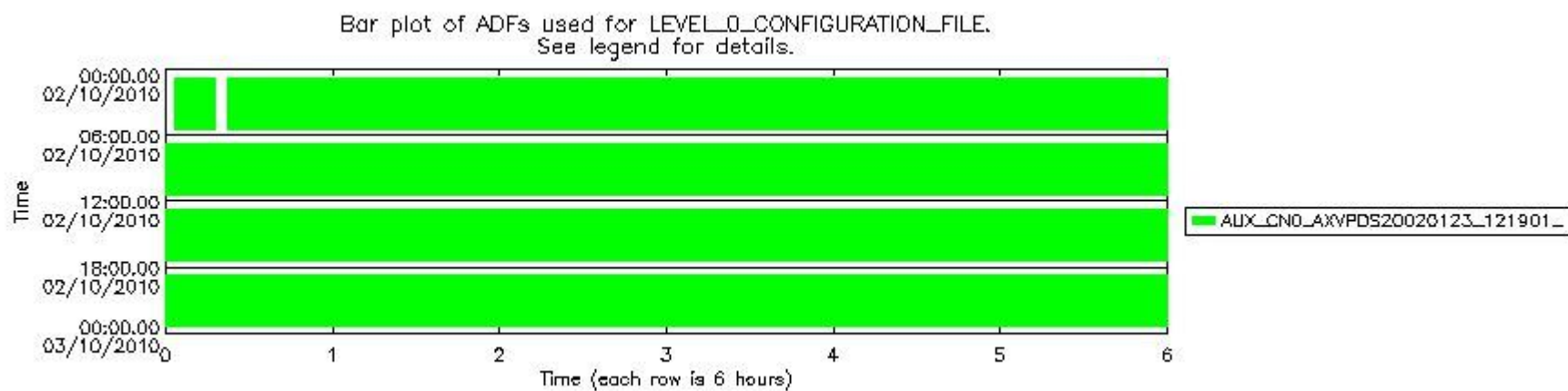
The use of ADFs is shown in two ways:

1. By means of two tables that can be used to find the ADF used for a specific product.
2. By means of plots that show changes in ADF using colours.

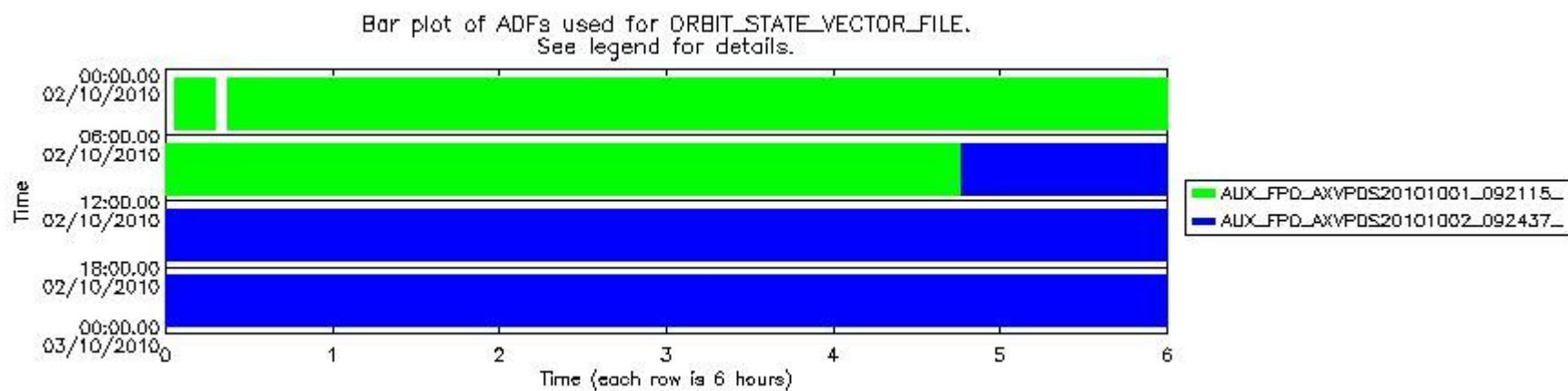
Number	ADF
0	AUX_CN0_AXVPDS20020123_121901_20020101_000000_20200101_000000
1	AUX_FPO_AXVPDS20101001_092115_20100930_194413_20101010_211025
2	AUX_FPO_AXVPDS20101002_092437_20101001_191236_20101011_203848

Number	Product name	#CN0	#FPO
--------	--------------	------	------

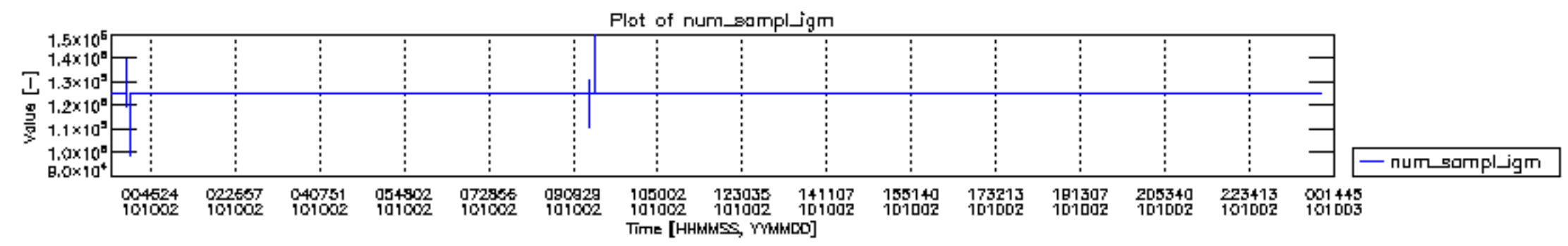
0	MIP_NL__0PNPDE20101002_000257_000009032093_00259_44902_2942.N1	0	1
1	MIP_NL__0PNPDE20101002_002207_000047062093_00260_44903_2943.N1	0	1
2	MIP_NL__0PNPDE20101002_013926_000045502093_00260_44903_2944.N1	0	1
3	MIP_NL__0PNPDE20101002_025443_000061232093_00261_44904_2945.N1	0	1
4	MIP_NL__0PNPDE20101002_043613_000060882093_00262_44905_2946.N1	0	1
5	MIP_NL__0PNPDE20101002_203815_000043502093_00272_44915_2947.N1	0	2
6	MIP_NL__0PNPDE20101002_214942_000061062093_00272_44915_2948.N1	0	2
7	MIP_NL__0PNPDE20101002_233028_000060792093_00273_44916_2949.N1	0	2
8	MIP_NL__0PNPDK20101002_061707_000040882093_00263_44906_3002.N1	0	1
9	MIP_NL__0PNPDK20101002_072413_000062172093_00264_44907_3003.N1	0	1
10	MIP_NL__0PNPDK20101002_090706_000059842093_00265_44908_3004.N1	0	1
11	MIP_NL__0PNPDK20101002_104600_000060022093_00266_44909_3005.N1	0	2
12	MIP_NL__0PNPDK20101002_122448_000059982093_00267_44910_3006.N1	0	2
13	MIP_NL__0PNPDK20101002_140350_000058622093_00268_44911_3007.N1	0	2
14	MIP_NL__0PNPDK20101002_154033_000059812093_00269_44912_3008.N1	0	2
15	MIP_NL__0PNPDK20101002_171841_000059352093_00270_44913_3009.N1	0	2
16	MIP_NL__0PNPDK20101002_185702_000061192093_00271_44914_3010.N1	0	2

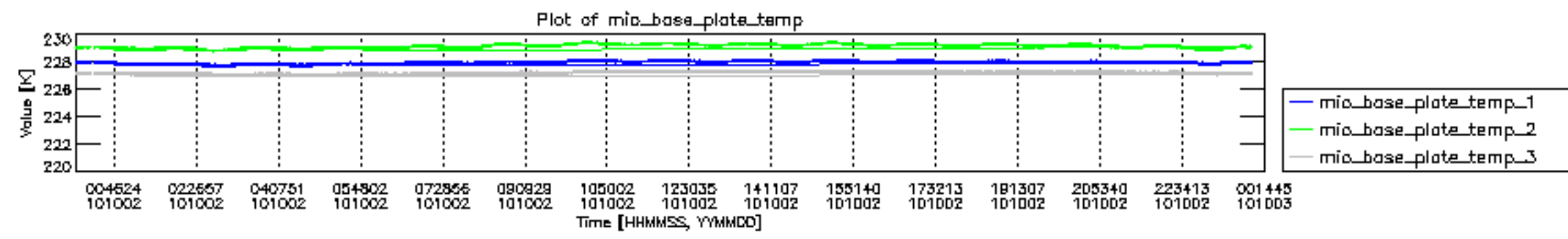


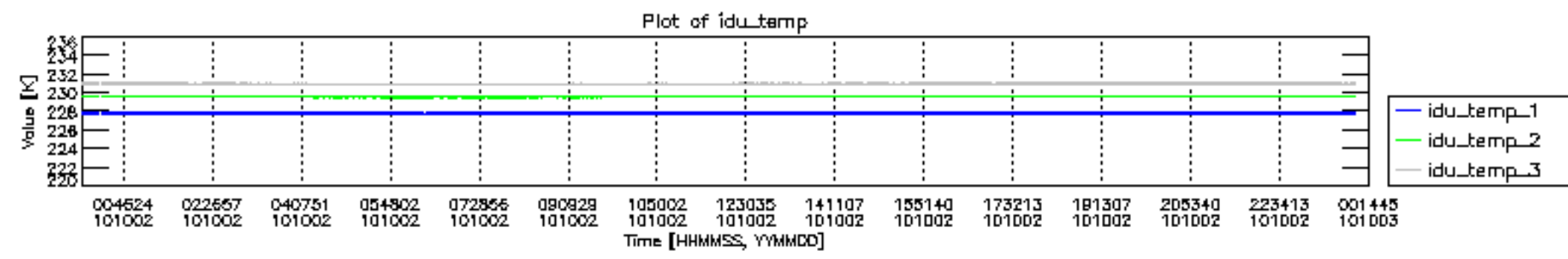
mipas_daily_report_level0__any_version__20101002_12.PNG

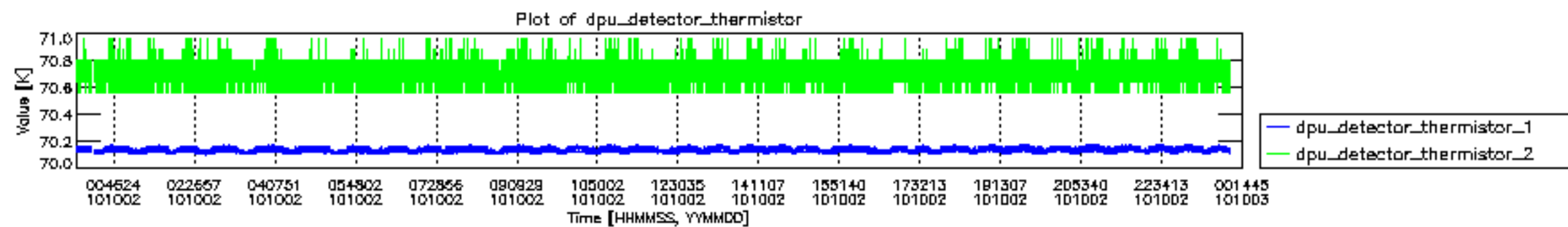


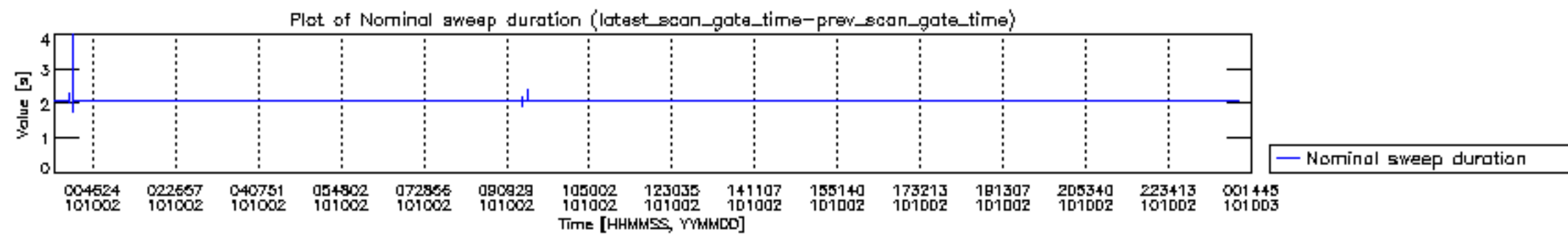
mipas_daily_report_level0__any_version__20101002_13.PNG

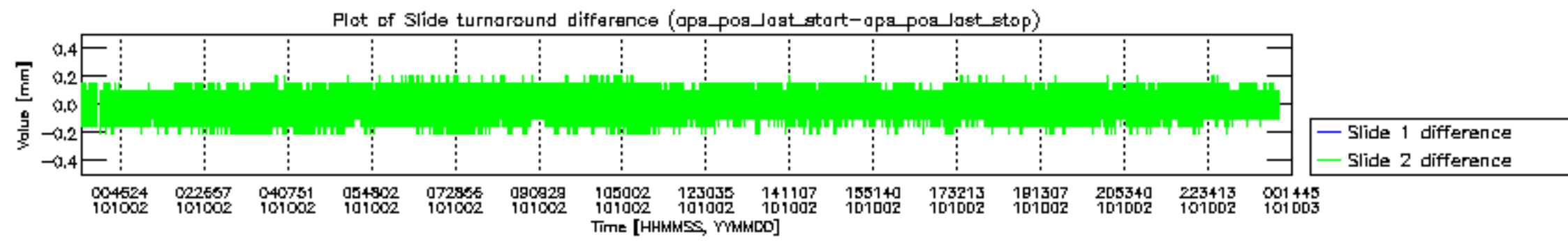


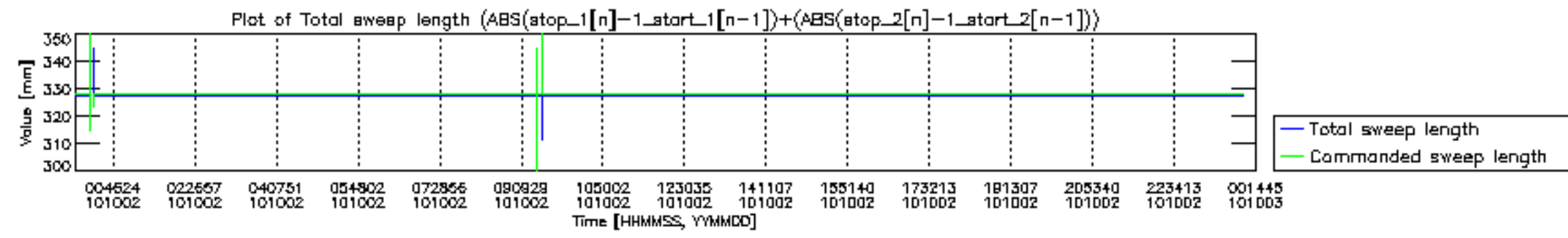


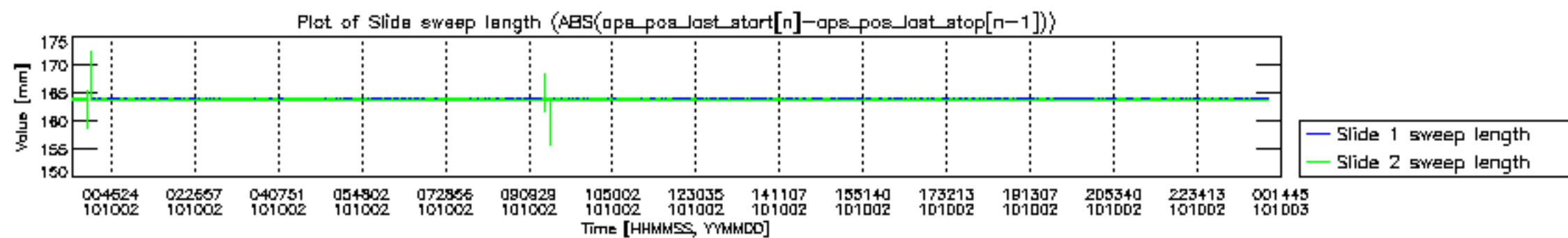


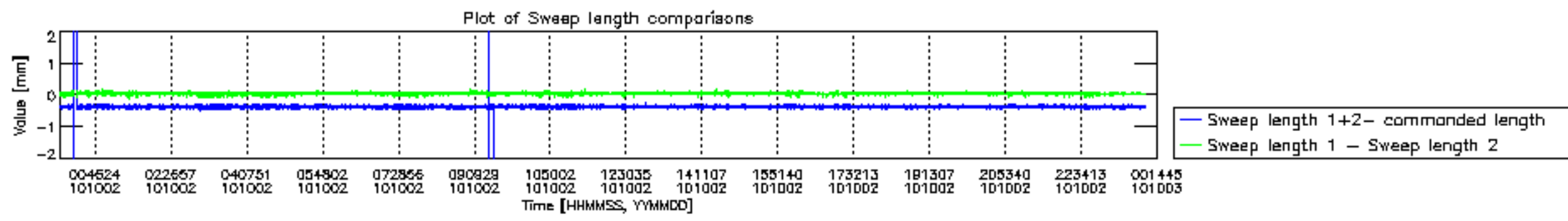


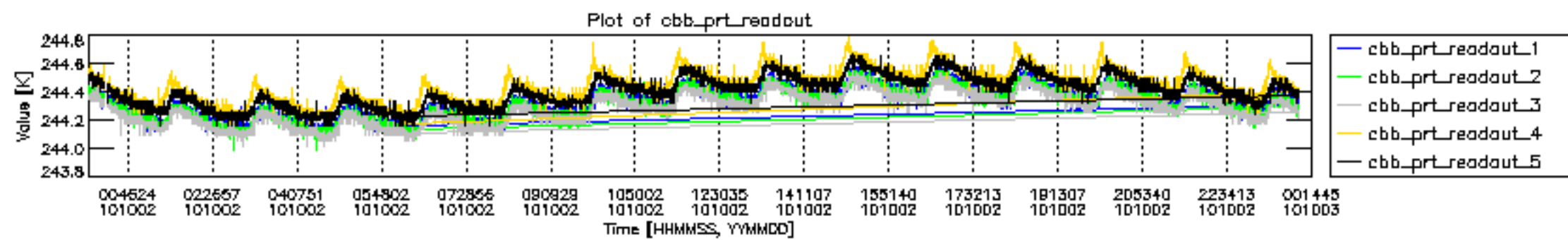


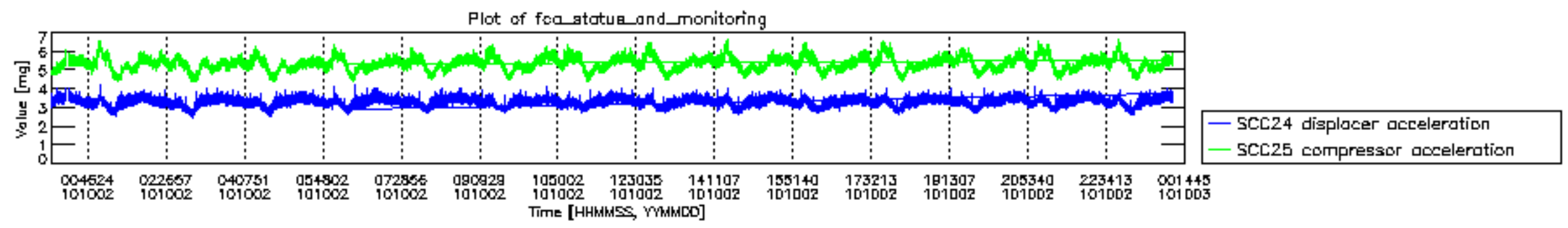












MIPNLOP_MIPSOUPAC_aux_fields_igm_cal, channel statistics plot
 Colour indicates value.

