

0. MIPAS Daily Report for level 0 products

[0.1 General Info](#)

[0.2 Instrument Operational Performance Parameters](#)

[0.3 ADF monitoring](#)

0.1 General Info

This report contains a daily analysis on parameters extracted from MIPAS level 0 data (The MIP_NL__0P product).

0.1.1 Report summary

The table below shows general characteristics of the data that are included into this report.

Item	Value
Report version	v1.5 2008-02-08
Time of report generation	06OCT2010 05:23:27
Data source version	<any version>
Processing scope for products	01OCT2010 00:00:00 to 02OCT2010 00:00:00
Start time of first product within scope	01OCT2010 00:33:52
Stop time of last product within scope	01OCT2010 21:10:59
Total number of level 0 products	15
Number of level 0 products with errors	1

0.1.2 Product Quality Indicators per product

The following table shows a summary for each product used in this report.

#	Product name	Start time	Stop time	Prod err	ISP err sign	ISP miss sign	ISP disc sign	rs sign
0	MIP_NL__0PNPDE20101001_003352_000009452093_00245_44888_2935.N1	01OCT2010 00:33:52	01OCT2010 00:49:37	0	0	0	0	0
1	MIP_NL__0PNPDE20101001_005344_000046732093_00246_44889_2936.N1	01OCT2010 00:53:44	01OCT2010 02:11:37	0	0	0	0	0
2	MIP_NL__0PNPDE20101001_021022_000045272093_00246_44889_2937.N1	01OCT2010 02:10:22	01OCT2010 03:25:49	0	0	0	0	0
3	MIP_NL__0PNPDE20101001_032513_000062362093_00247_44890_2938.N1	01OCT2010 03:25:13	01OCT2010 05:09:09	0	0	0	0	0
4	MIP_NL__0PNPDE20101001_050836_000060002093_00248_44891_2939.N1	01OCT2010 05:08:36	01OCT2010 06:48:36	0	0	0	0	0
5	MIP_NL__0PNPDE20101001_211013_000042682093_00258_44901_2940.N1	01OCT2010 21:10:13	01OCT2010 22:21:21	0	0	0	0	0
6	MIP_NL__0PNPDE20101001_222022_000062152093_00258_44901_2941.N1	01OCT2010 22:20:22	02OCT2010 00:03:57	0	0	0	0	0
7	MIP_NL__0PNPDK20101001_064800_000041242093_00249_44892_2993.N1	01OCT2010 06:48:00	01OCT2010 07:56:44	0	0	0	0	0
8	MIP_NL__0PNPDK20101001_093713_000060802093_00251_44894_2995.N1	01OCT2010 09:37:13	01OCT2010 11:18:33	0	0	0	0	0
9	MIP_NL__0PNPDK20101001_111745_000059022093_00252_44895_2996.N1	01OCT2010 11:17:45	01OCT2010 12:56:07	1	1	0	0	0
10	MIP_NL__0PNPDK20101001_125504_000060812093_00253_44896_2997.N1	01OCT2010 12:55:04	01OCT2010 14:36:25	0	0	0	0	0
11	MIP_NL__0PNPDK20101001_143441_000057352093_00254_44897_2998.N1	01OCT2010 14:34:41	01OCT2010 16:10:15	0	0	0	0	0
12	MIP_NL__0PNPDK20101001_160858_000060752093_00255_44898_2999.N1	01OCT2010 16:08:58	01OCT2010 17:50:13	0	0	0	0	0
13	MIP_NL__0PNPDK20101001_174854_000060142093_00256_44899_3000.N1	01OCT2010 17:48:54	01OCT2010 19:29:08	0	0	0	0	0
14	MIP_NL__0PNPDK20101001_192832_000061462093_00257_44900_3001.N1	01OCT2010 19:28:32	01OCT2010 21:10:59	0	0	0	0	0

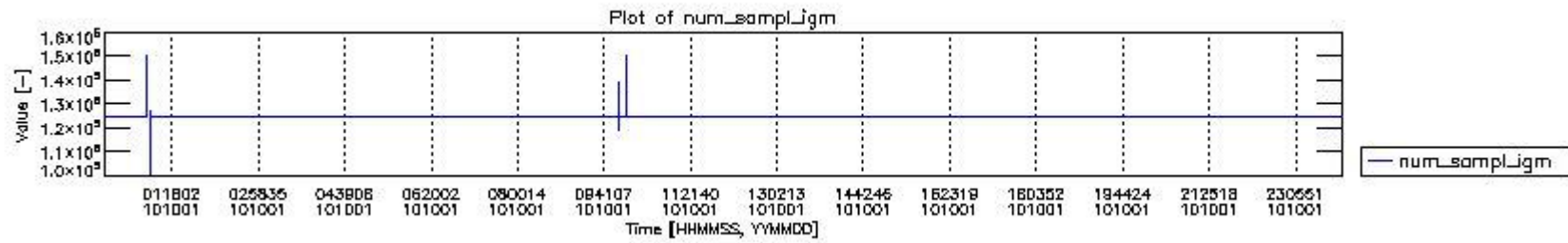
0.2 Instrument Operational Performance Parameters

The following plots give an overview of various instrument parameters for this day. The instrument parameters are part of the auxiliary data field within the source packets of the MIP_NL__0P product. The auxiliary data is normally included twice per interferogram. Note that only the first packet is currently included in monitoring.

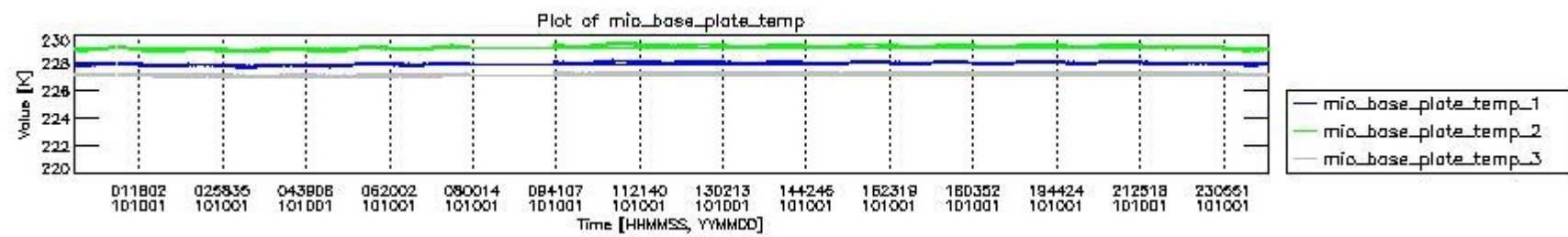
The following table shows the counts of various interferogram number of samples

Number of igm samples	Count [#]	Count [%]
100706	1	0.0025922854
119279	1	0.0025922854
124800	35985	93.283389

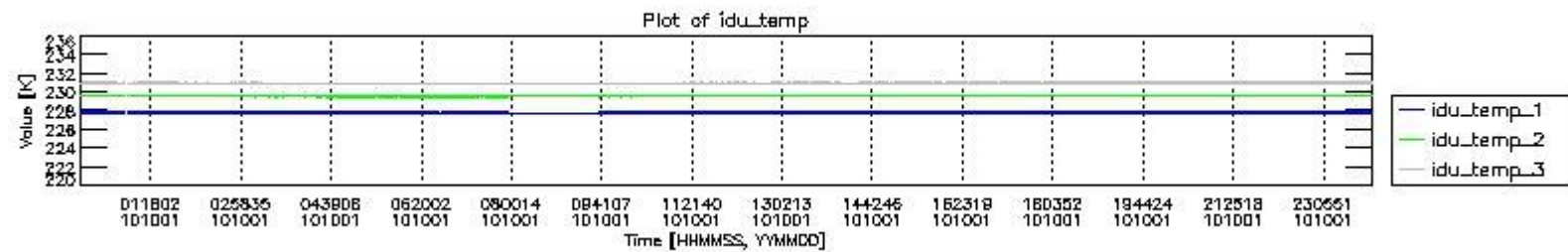
124803	2579	6.6855039
125958	1	0.0025922854
127116	1	0.0025922854
127382	1	0.0025922854
127456	1	0.0025922854
133890	1	0.0025922854
139411	1	0.0025922854
147514	1	0.0025922854
147588	1	0.0025922854
150096	1	0.0025922854
150244	1	0.0025922854



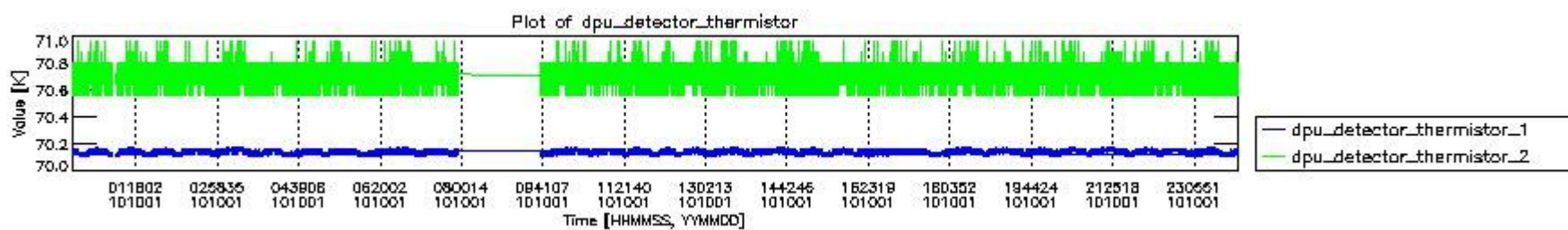
mipas_daily_report_level0_any_version_20101001_0.PNG



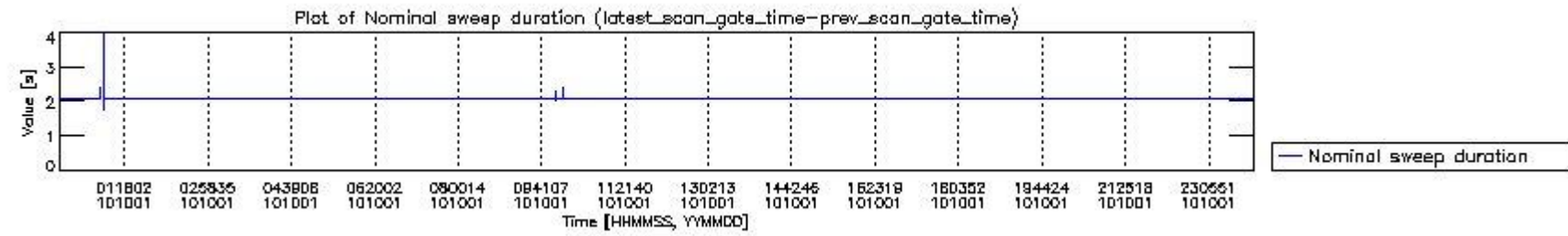
mipas_daily_report_level0_any_version_20101001_1.PNG



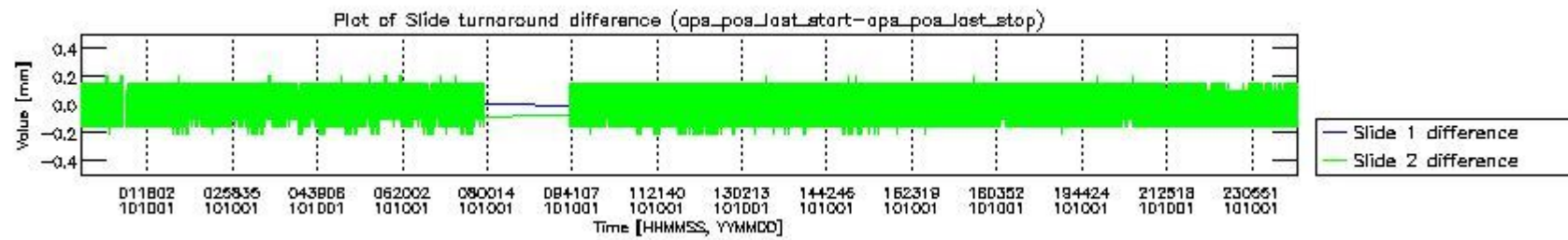
mipas_daily_report_level0_any_version_20101001_2.PNG



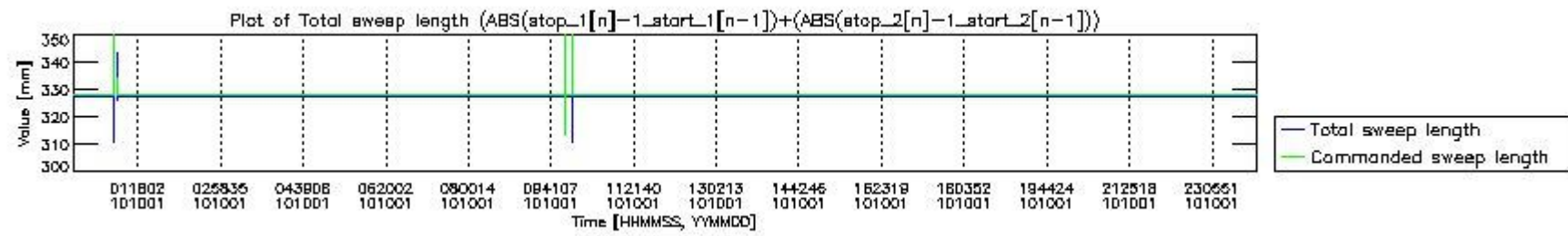
mipas_daily_report_level0_any_version_20101001_3.PNG



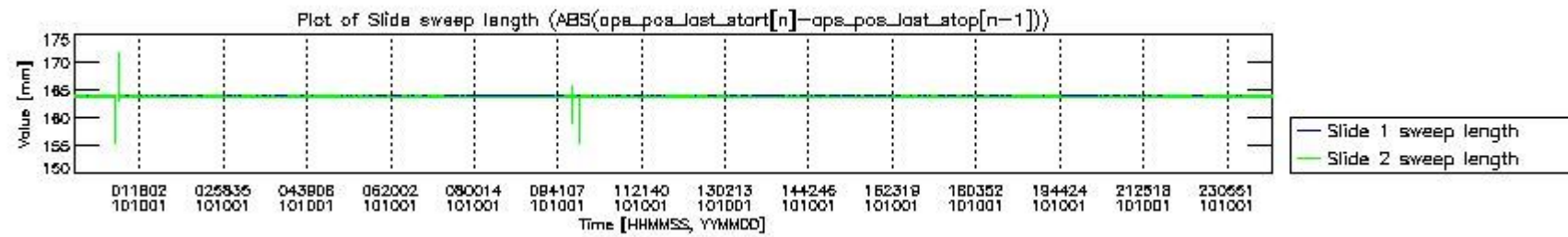
mipas_daily_report_level0_any_version_20101001_4.PNG



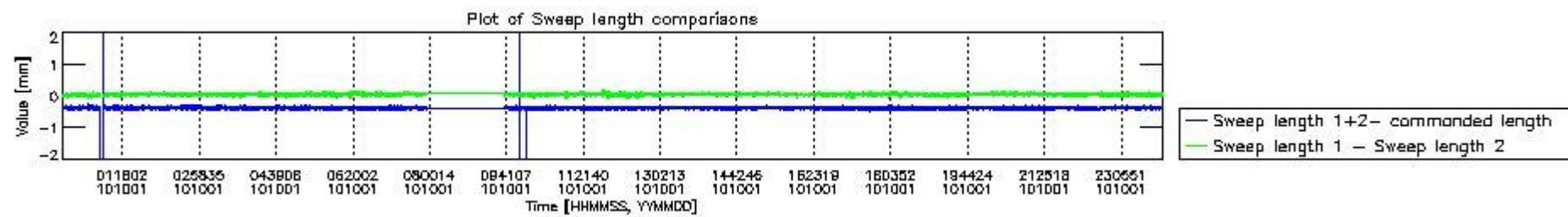
mipas_daily_report_level0_any_version_20101001_5.PNG



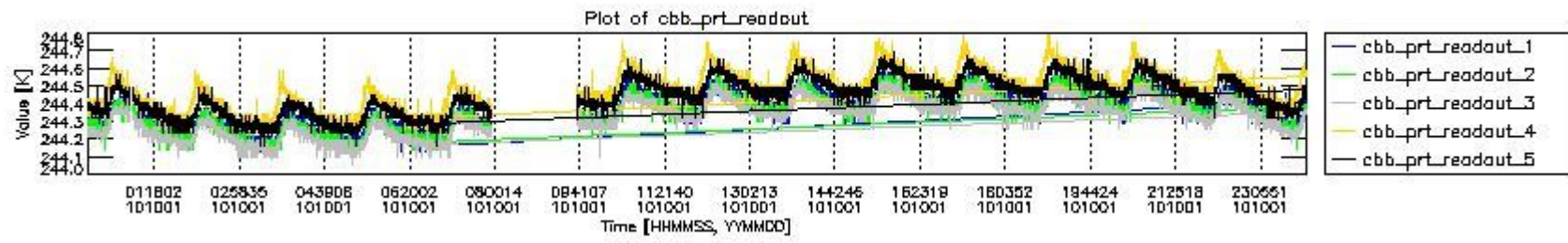
mipas_daily_report_level0_any_version_20101001_6.PNG



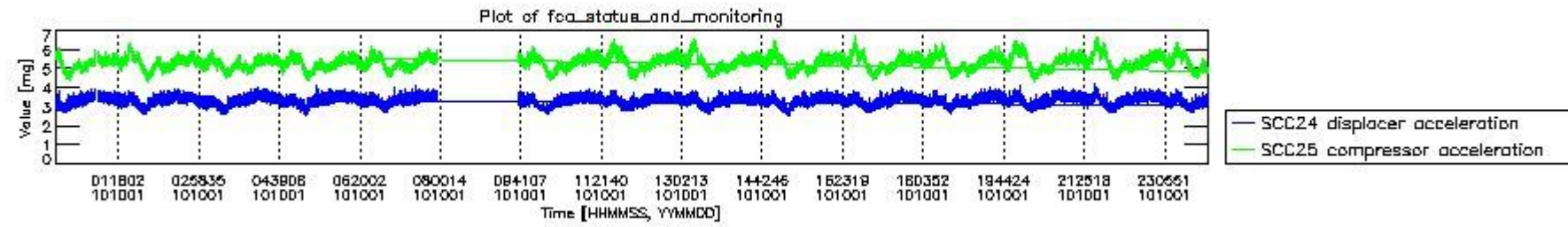
mipas_daily_report_level0_any_version_20101001_7.PNG



mipas_daily_report_level0_any_version_20101001_8.PNG



mipas_daily_report_level0_any_version_20101001_9.PNG

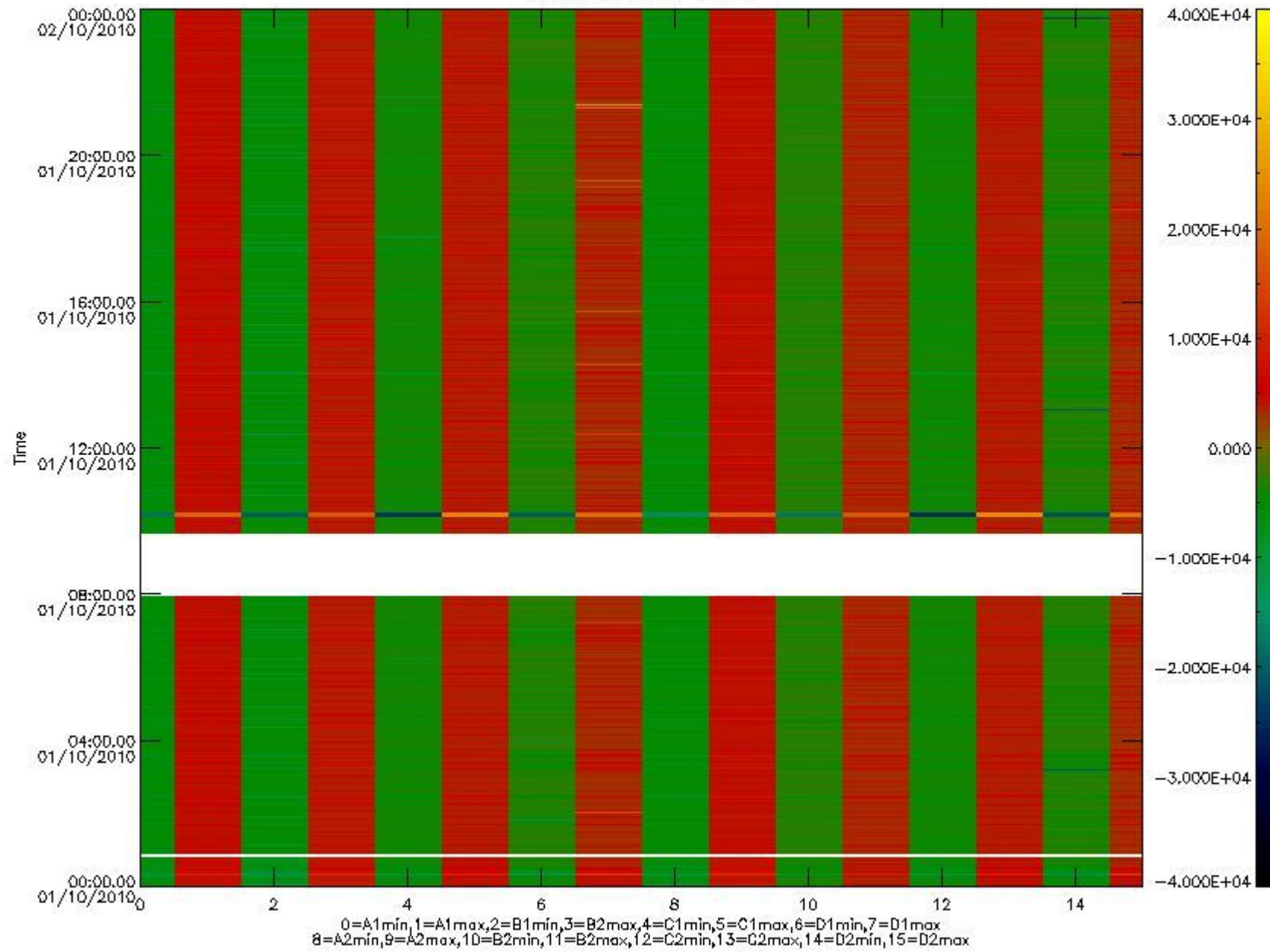


mipas_daily_report_level0_any_version_20101001_10.PNG

The following table shows channel statistics for all channels for this day.

Channel	Min	Max	ADC
A1	-18008	19083	16bit
B1	-20342	17497	16bit
C1	-24402	24349	16bit
D1	-32768	32767	16bit
A2	-15665	19315	16bit
B2	-18148	17839	16bit
C2	-25409	25052	16bit
D2	-32768	32767	16bit

MIPNLOP_MIPSOUPAC_aux_fields_igm_cal, channel statistics plot
Colour indicates value.



mipas_daily_report_level0_any_version_20101001_11.PNG

0.3 ADF monitoring

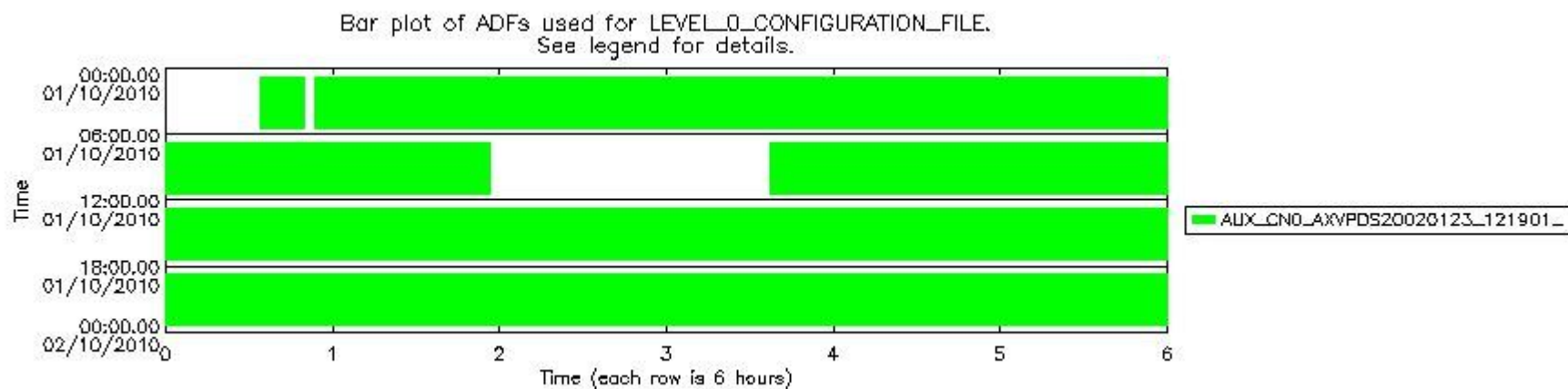
The use of ADFs is shown in two ways:

1. By means of two tables that can be used to find the ADF used for a specific product.
2. By means of plots that show changes in ADF using colours.

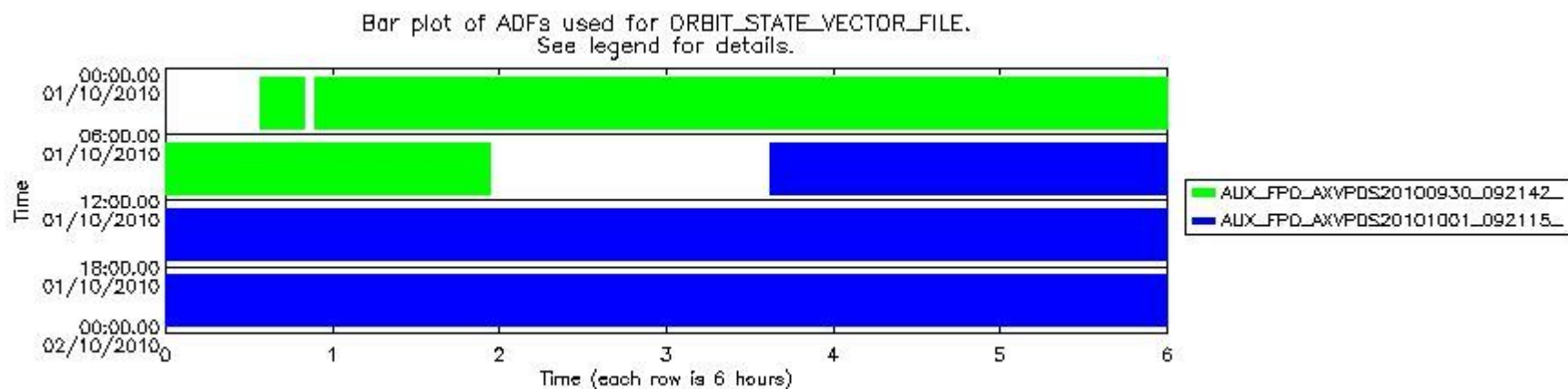
Number	ADF
0	AUX_CN0_AXVPDS20020123_121901_20020101_000000_20200101_000000
1	AUX_FPO_AXVPDS20100930_092142_20100929_183515_20101009_200126
2	AUX_FPO_AXVPDS20101001_092115_20100930_194413_20101010_211025

Number	Product name	#CN0	#FPO
--------	--------------	------	------

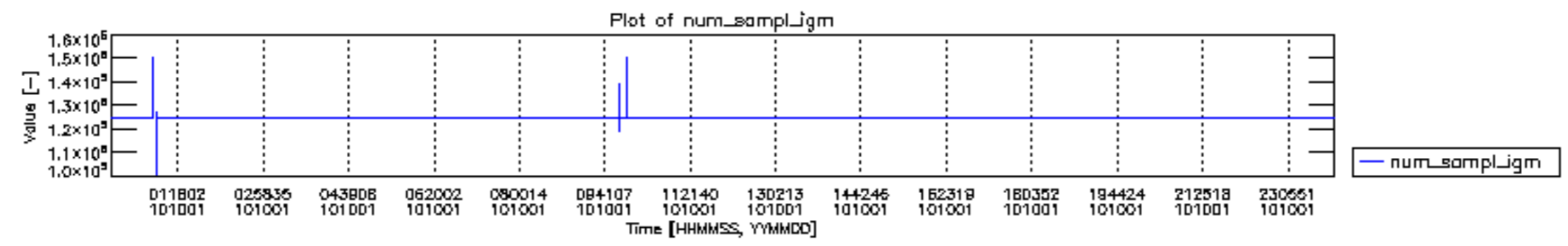
0	MIP_NL__0PNPDE20101001_003352_00009452093_00245_44888_2935.N1	0	1
1	MIP_NL__0PNPDE20101001_005344_000046732093_00246_44889_2936.N1	0	1
2	MIP_NL__0PNPDE20101001_021022_000045272093_00246_44889_2937.N1	0	1
3	MIP_NL__0PNPDE20101001_032513_000062362093_00247_44890_2938.N1	0	1
4	MIP_NL__0PNPDE20101001_050836_000060002093_00248_44891_2939.N1	0	1
5	MIP_NL__0PNPDE20101001_211013_000042682093_00258_44901_2940.N1	0	2
6	MIP_NL__0PNPDE20101001_222022_000062152093_00258_44901_2941.N1	0	2
7	MIP_NL__0PNPDK20101001_064800_000041242093_00249_44892_2993.N1	0	1
8	MIP_NL__0PNPDK20101001_093713_000060802093_00251_44894_2995.N1	0	2
9	MIP_NL__0PNPDK20101001_111745_000059022093_00252_44895_2996.N1	0	2
10	MIP_NL__0PNPDK20101001_125504_000060812093_00253_44896_2997.N1	0	2
11	MIP_NL__0PNPDK20101001_143441_000057352093_00254_44897_2998.N1	0	2
12	MIP_NL__0PNPDK20101001_160858_000060752093_00255_44898_2999.N1	0	2
13	MIP_NL__0PNPDK20101001_174854_000060142093_00256_44899_3000.N1	0	2
14	MIP_NL__0PNPDK20101001_192832_000061462093_00257_44900_3001.N1	0	2

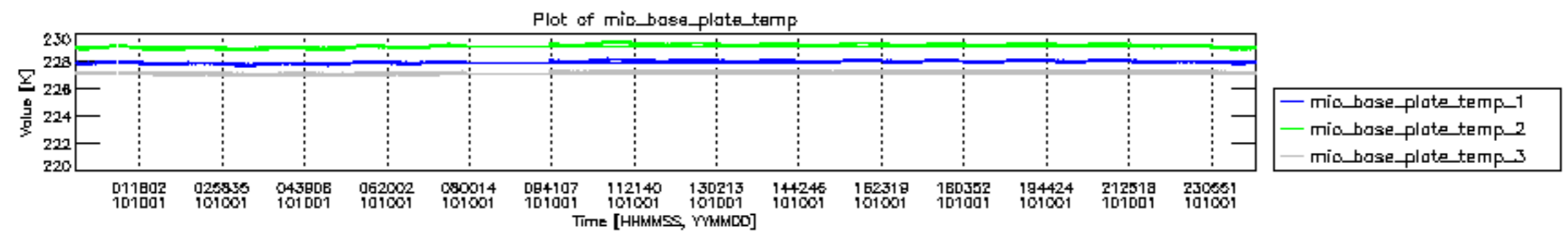


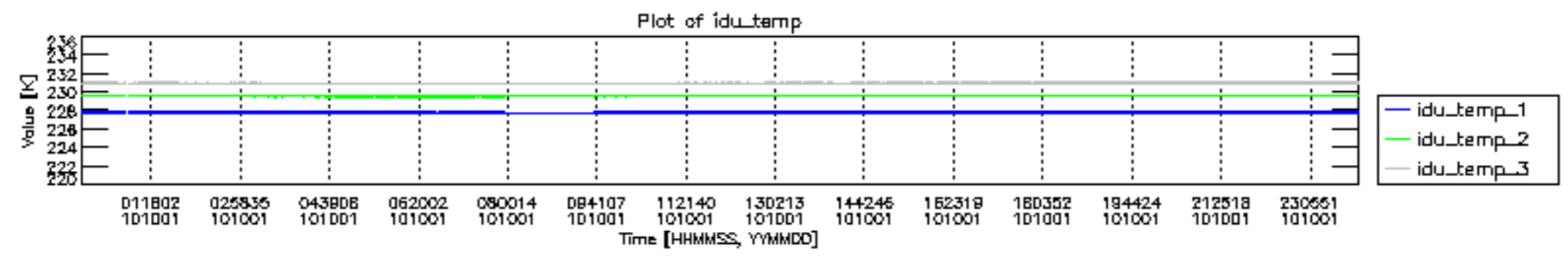
mipas_daily_report_level0__any_version__20101001_12.PNG

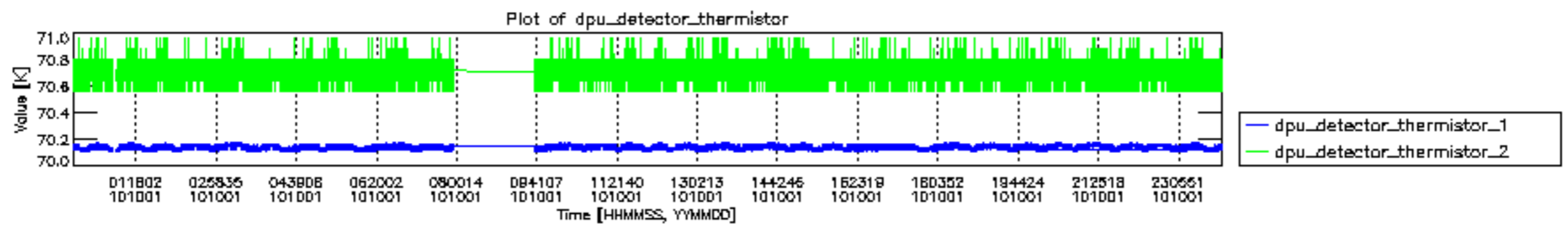


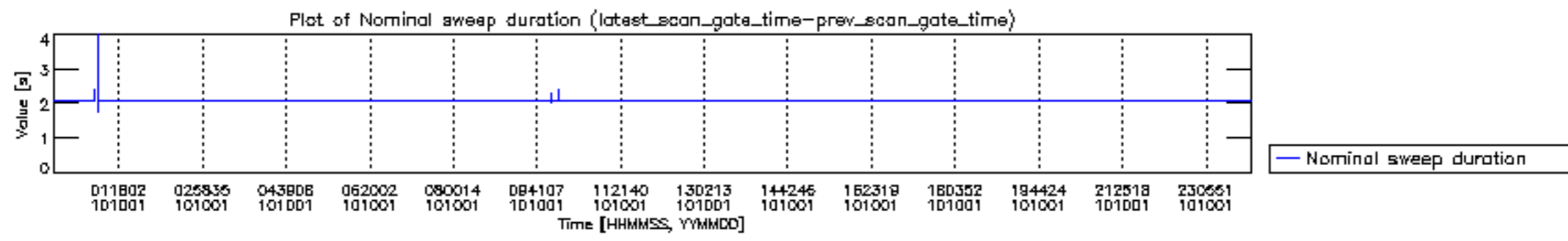
mipas_daily_report_level0__any_version__20101001_13.PNG

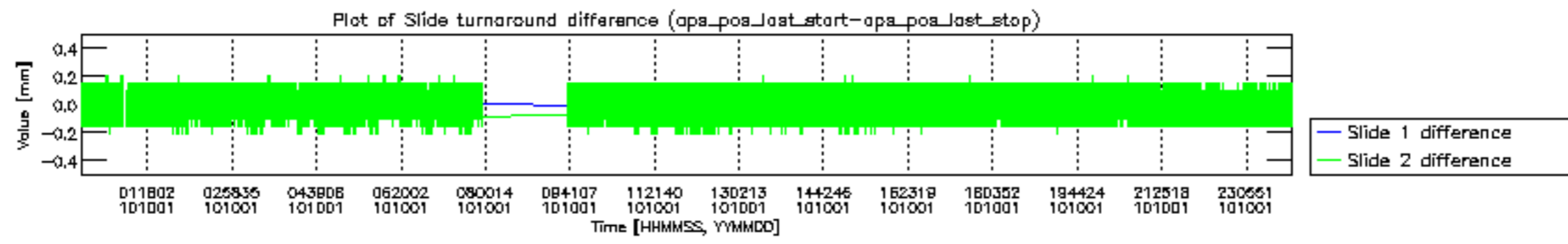


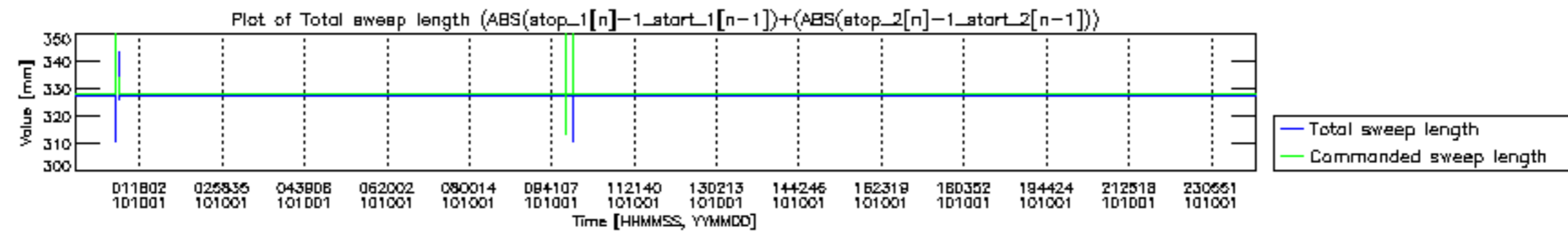


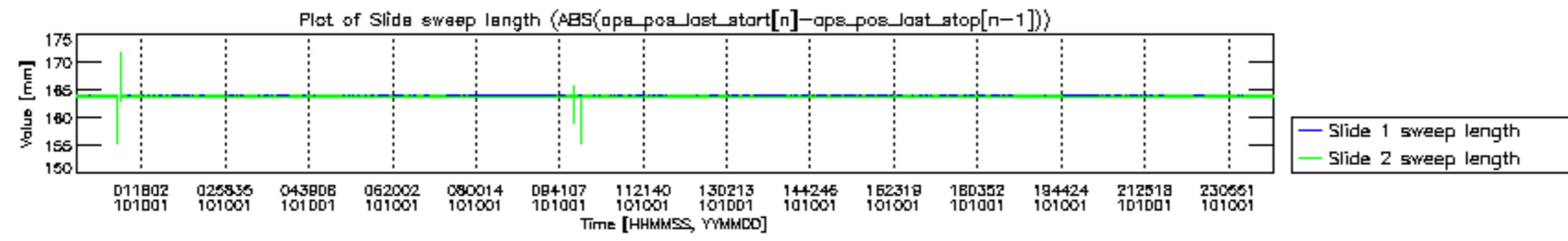


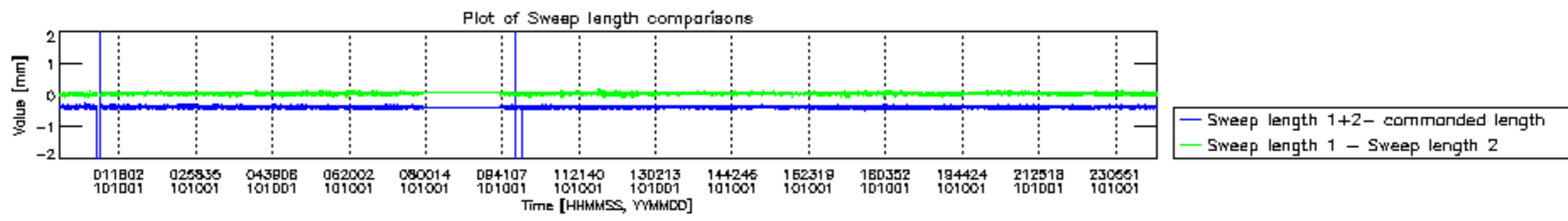


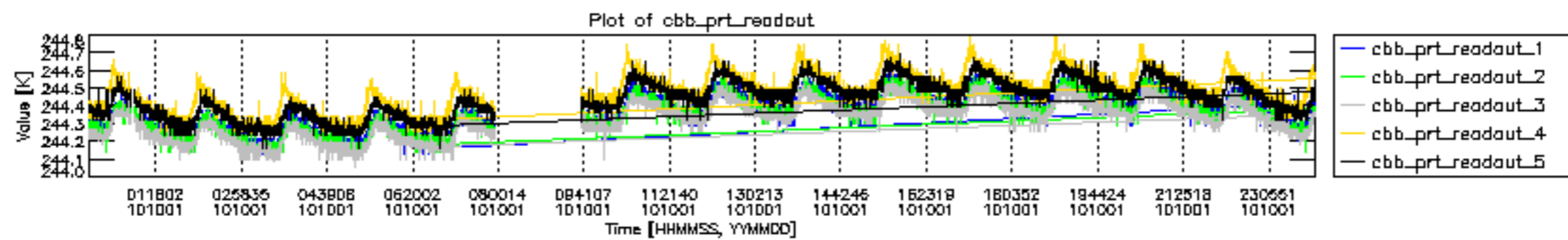


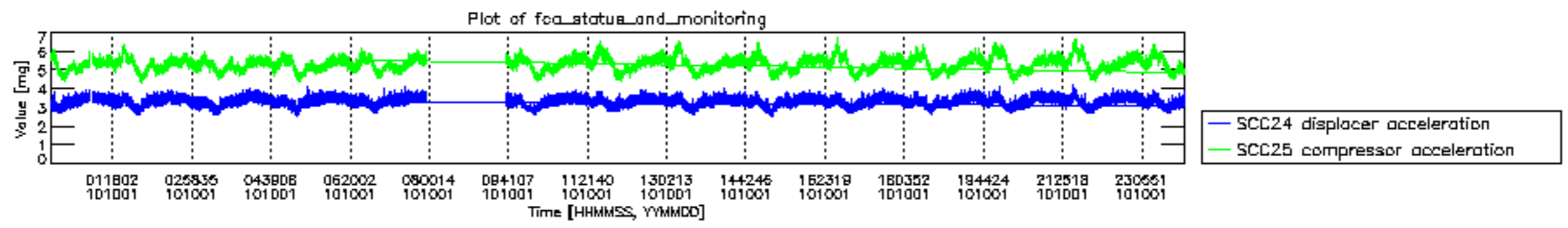




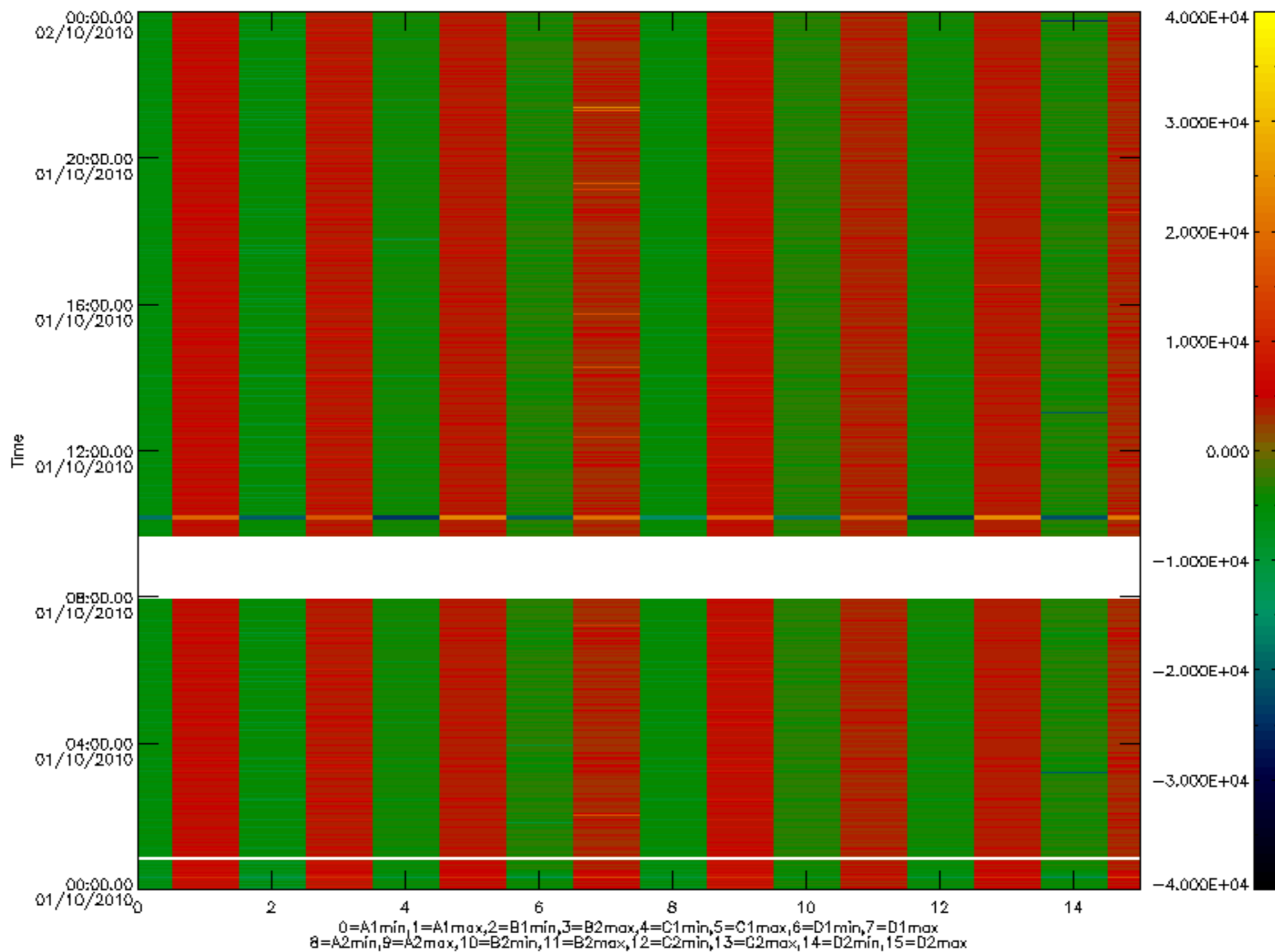


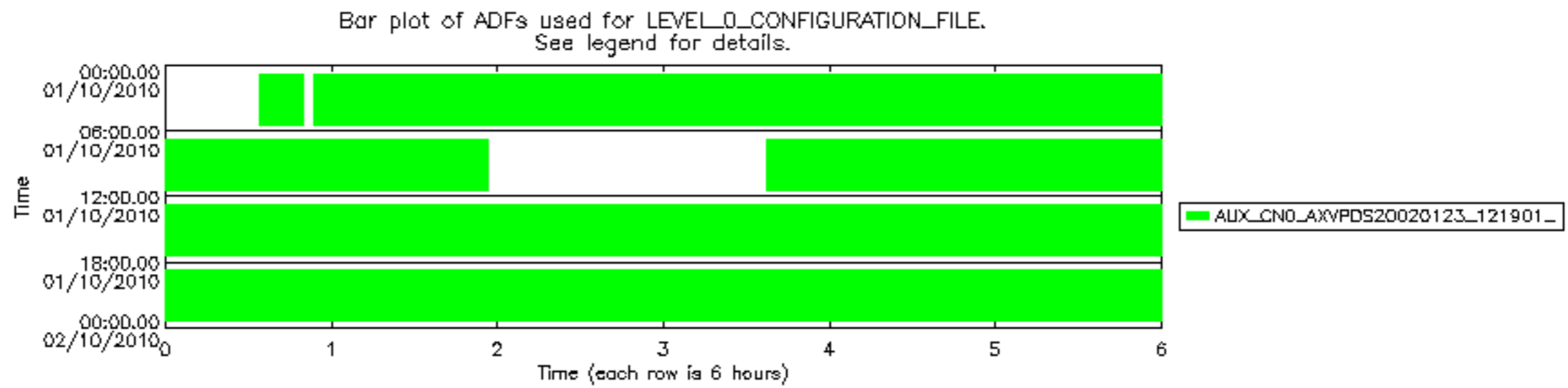






MIPNLOP_MIPSOUPAC_aux_fields_igm_cal, channel statistics plot
 Colour indicates value.





Bar plot of ADFs used for ORBIT_STATE_VECTOR_FILE.
See legend for details.

