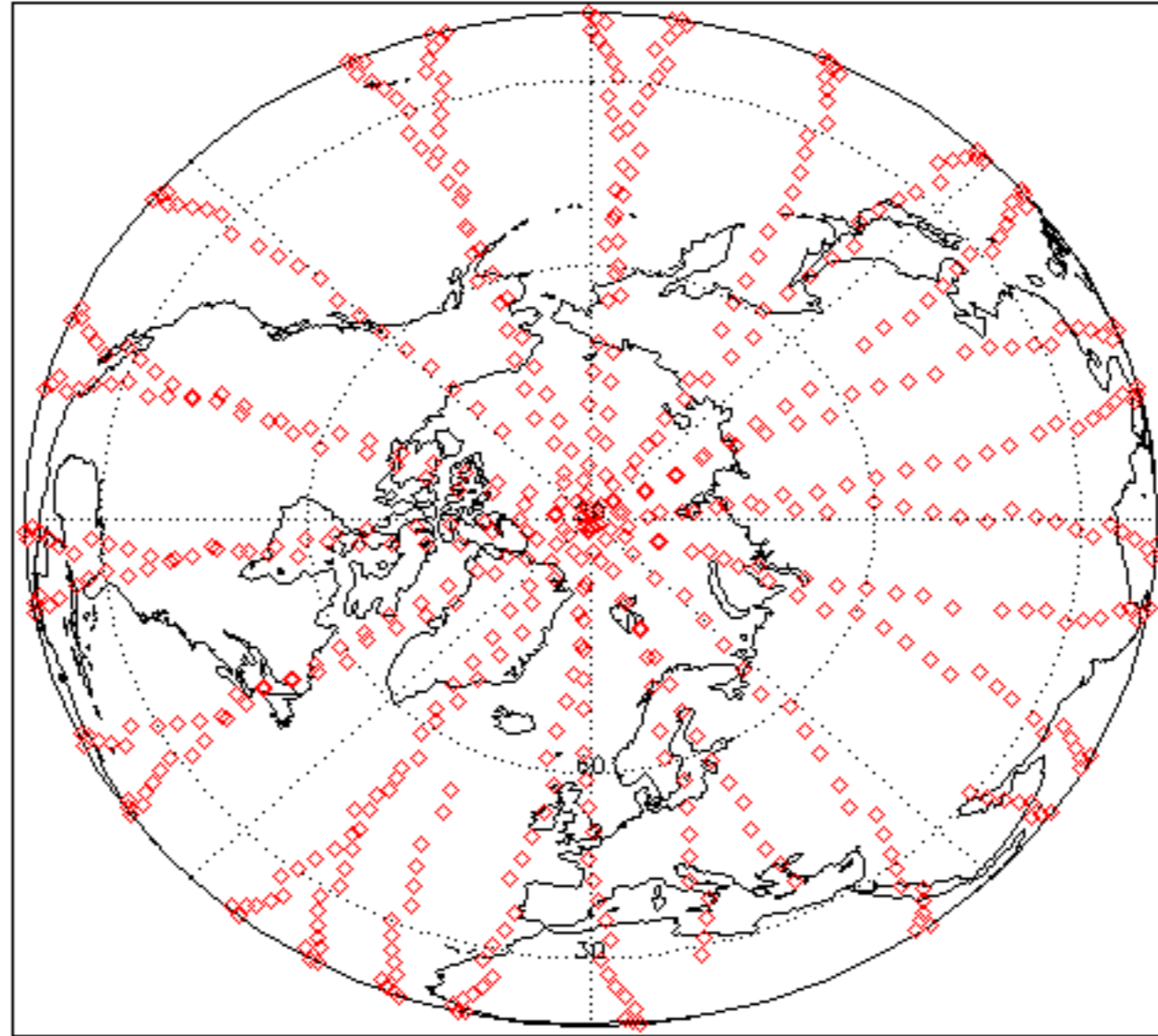
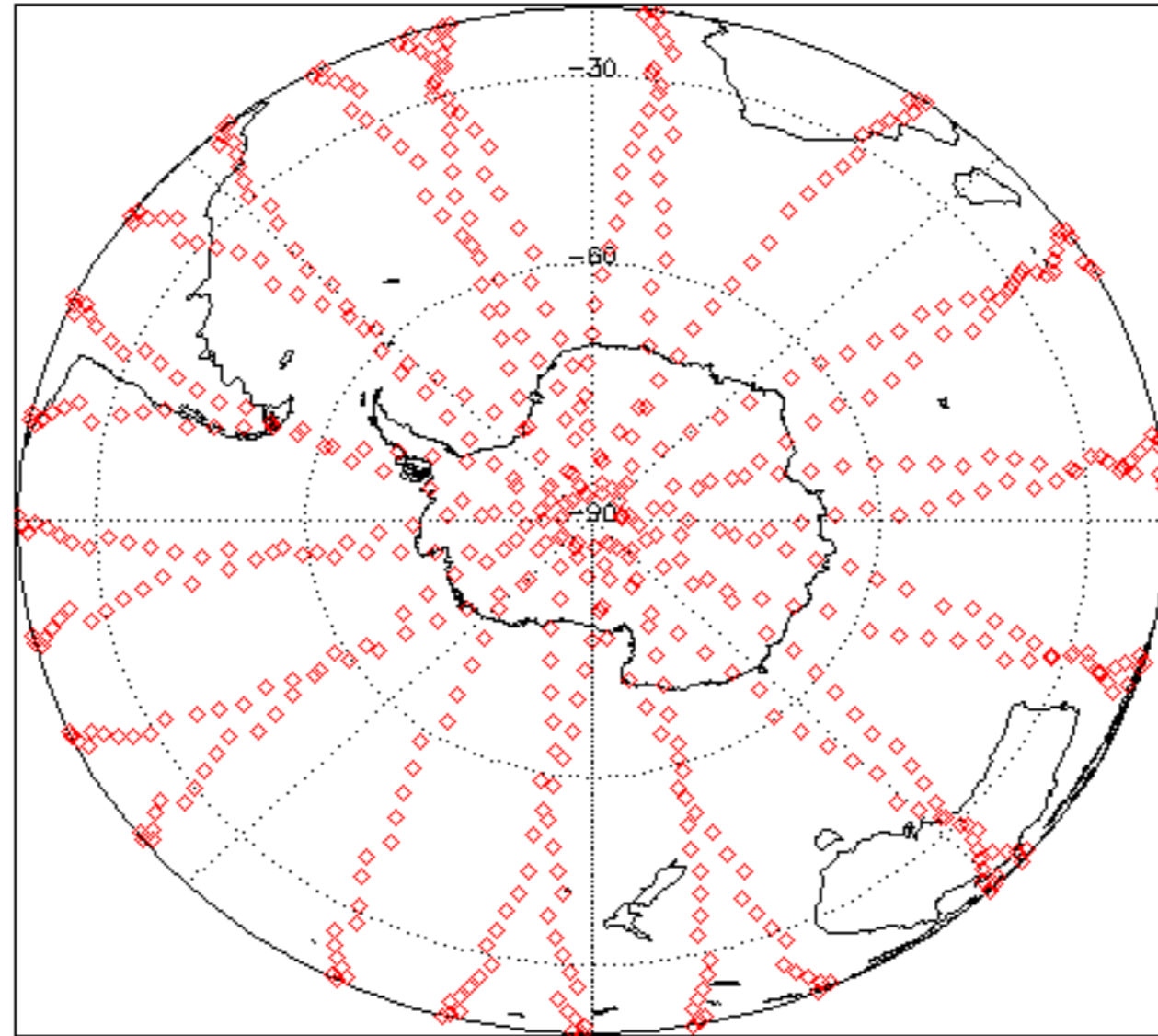
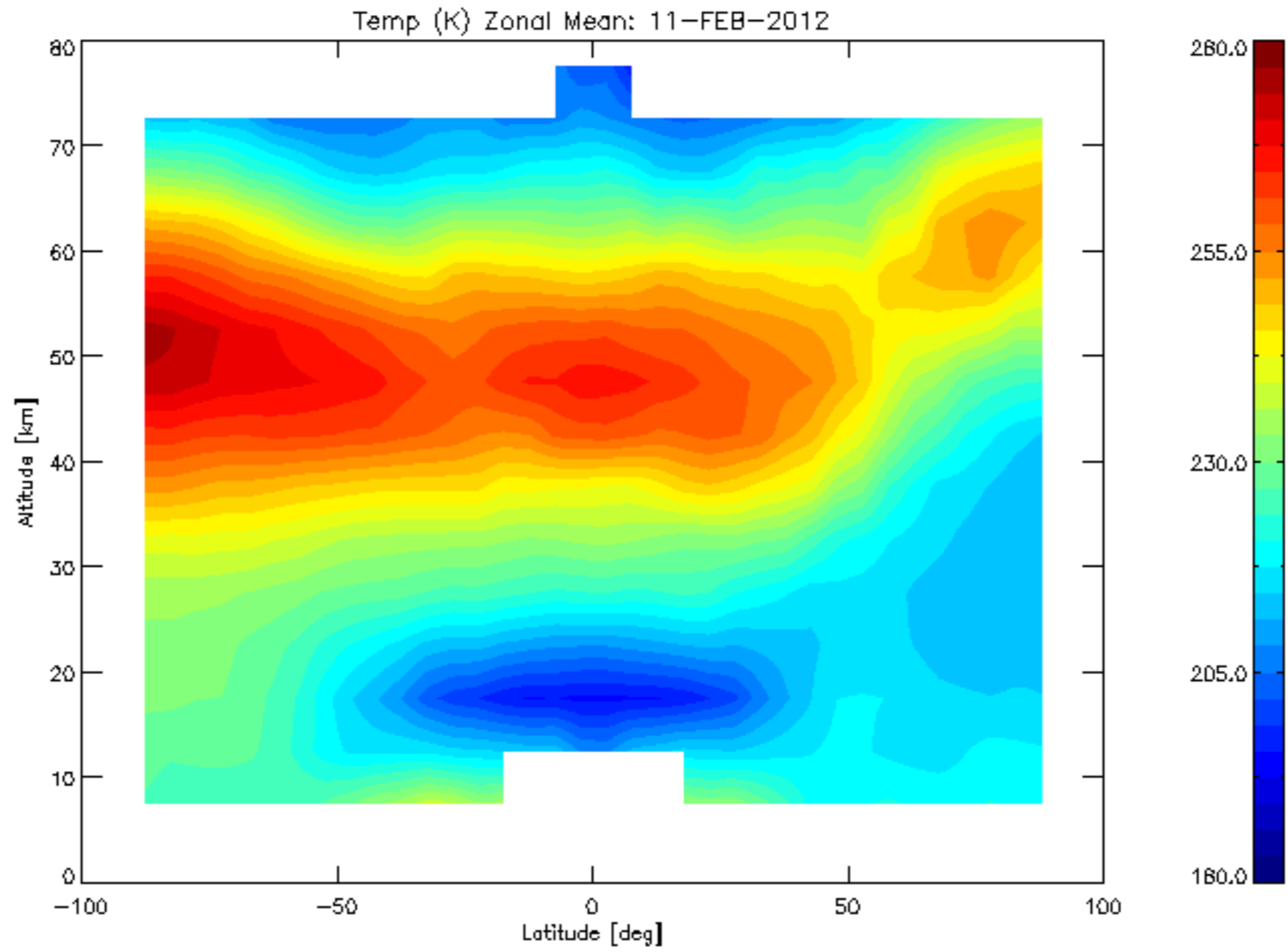


Geo-location of MIPAS profiles: 11-FEB-2012

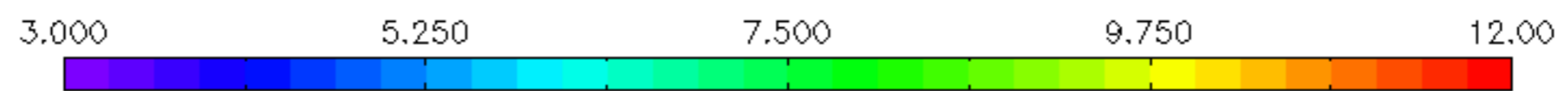
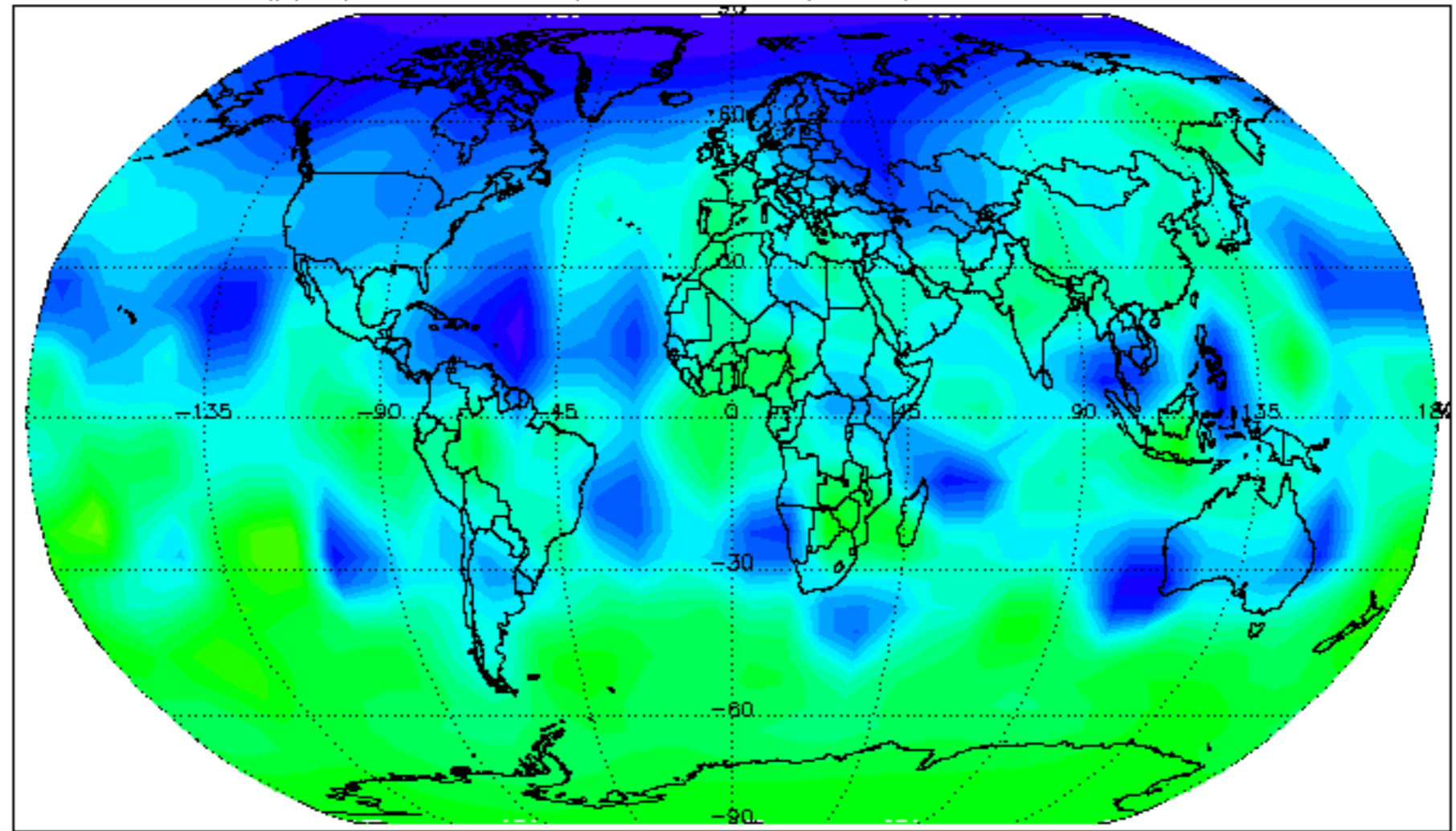


Geo-location of MIPAS profiles: 11-FEB-2012

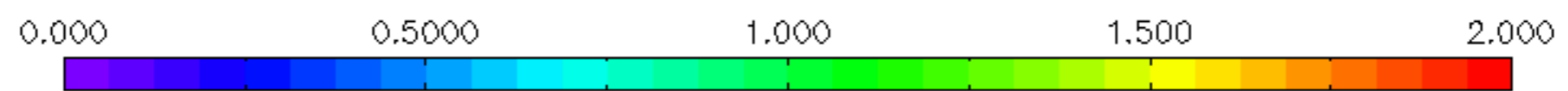
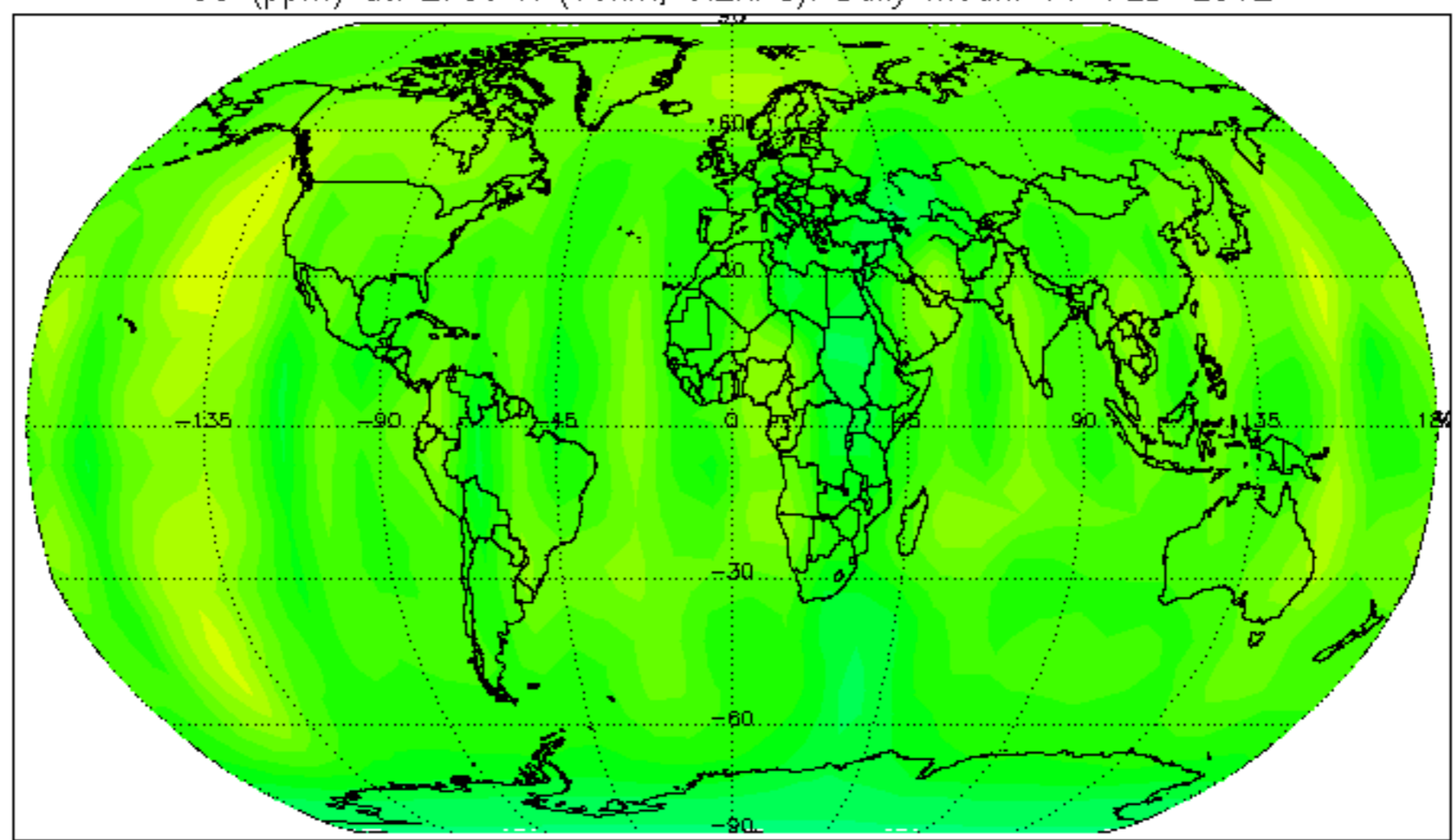




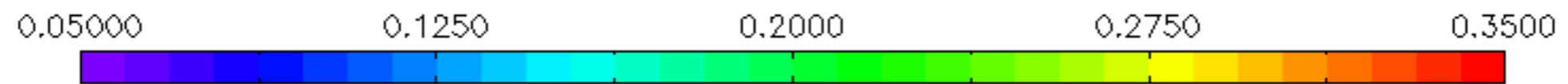
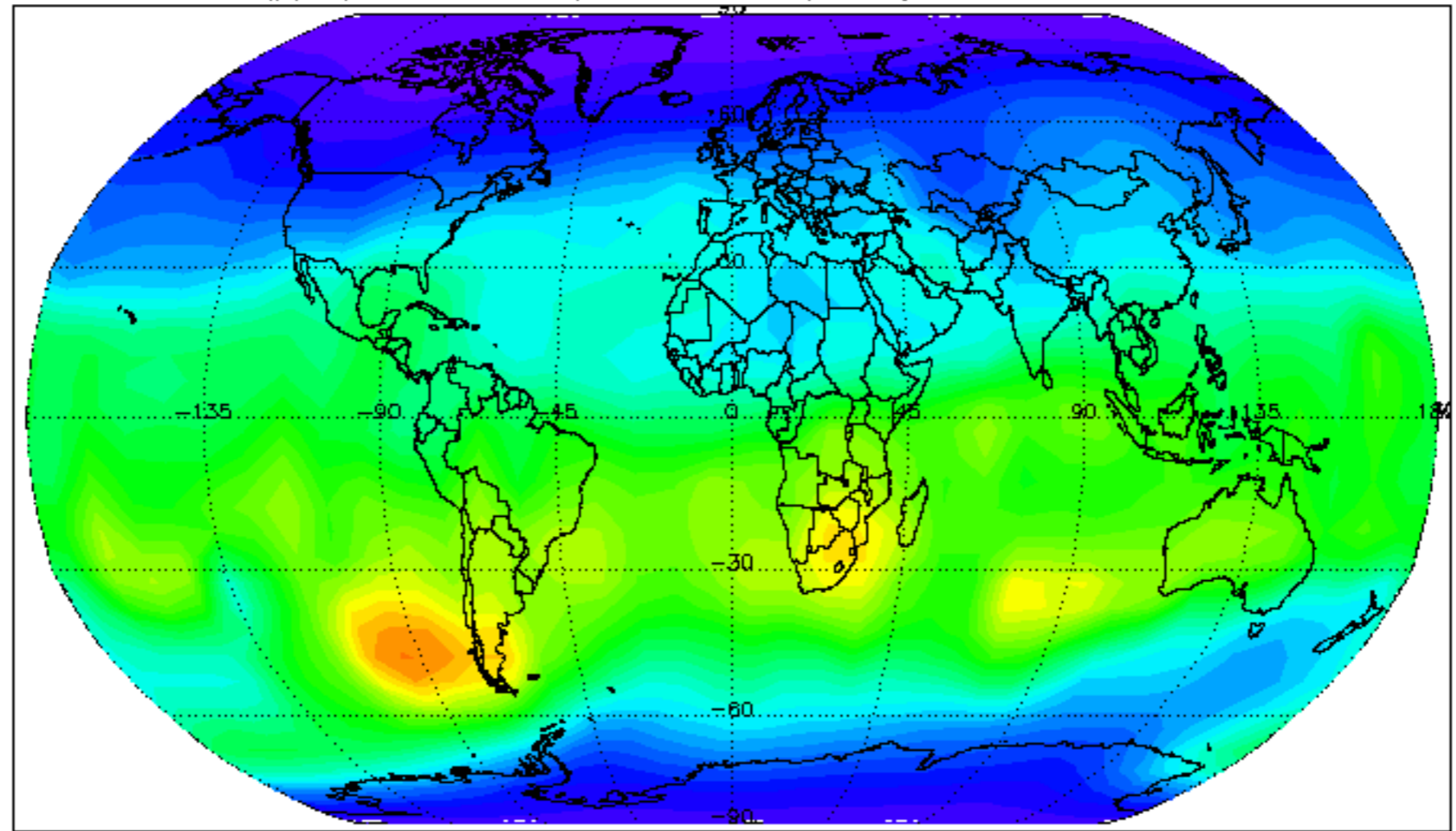
H<sub>2</sub>O (ppm) at: 2700 K (60km, 0.2hPa). Daily mean: 11-FEB-2012



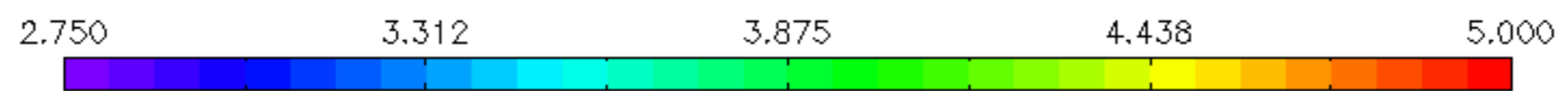
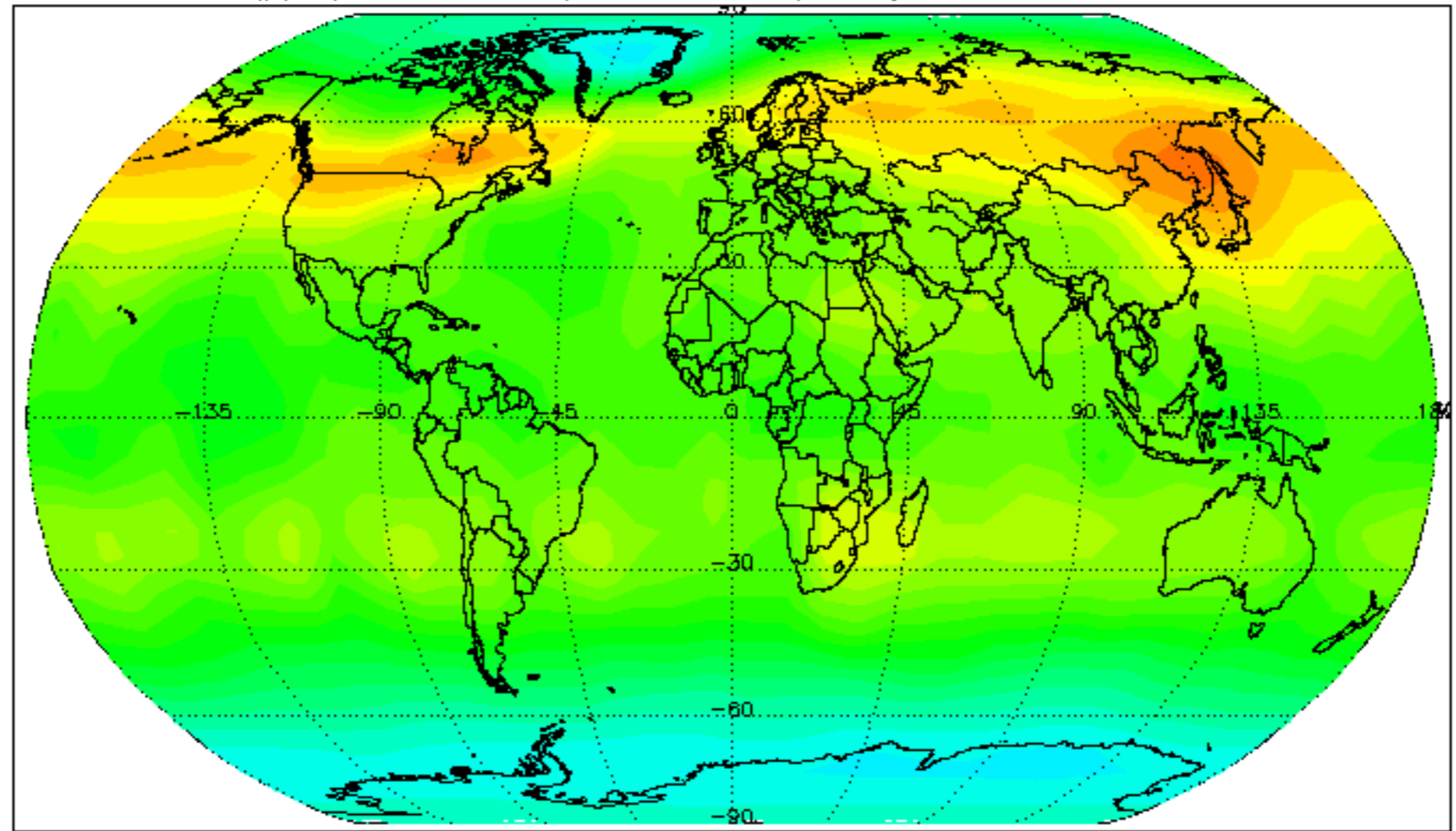
O3 (ppm) at: 2700 K (60km, 0.2hPa). Daily mean: 11-FEB-2012



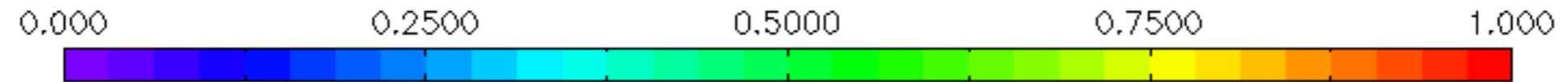
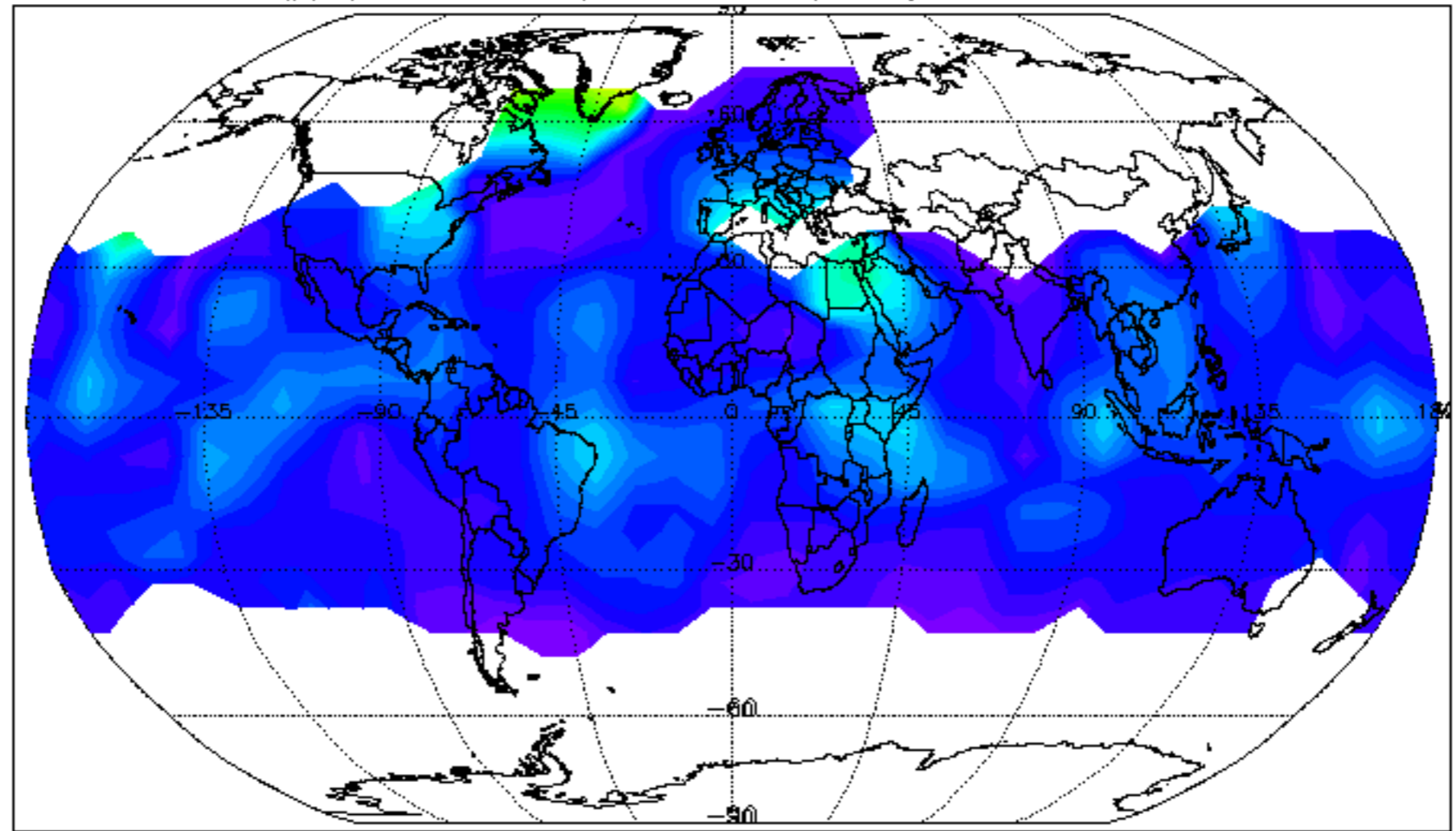
CH<sub>4</sub> (ppm) at: 2700 K (60km, 0.2hPa). Daily mean: 11-FEB-2012



O3 (ppm) at: 1700 K (45km, 1.5hPa). Daily mean: 11-FEB-2012

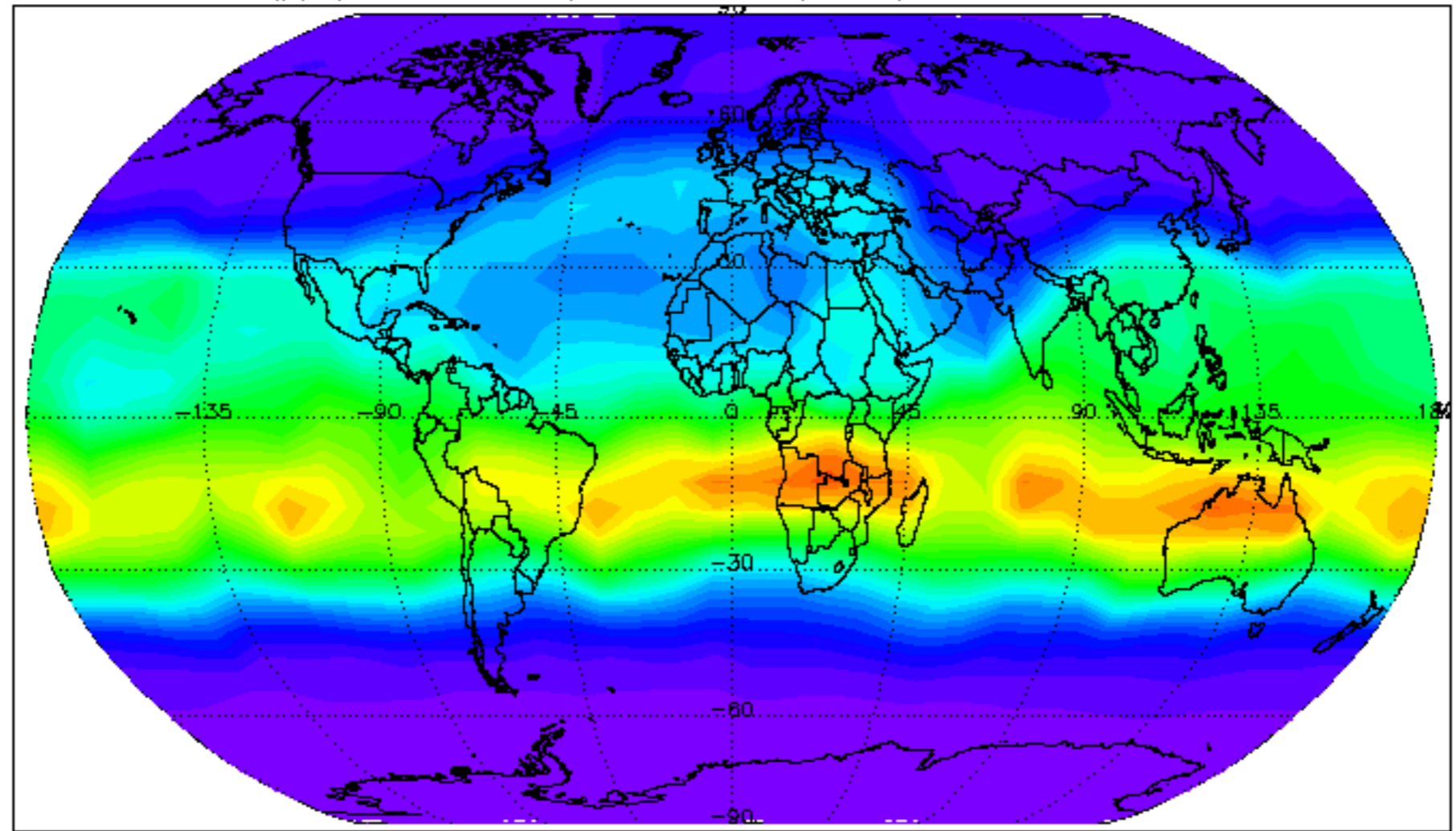


HNO<sub>3</sub> (ppb) at: 1700 K (45km, 1.5hPa). Daily mean: 11-FEB-2012

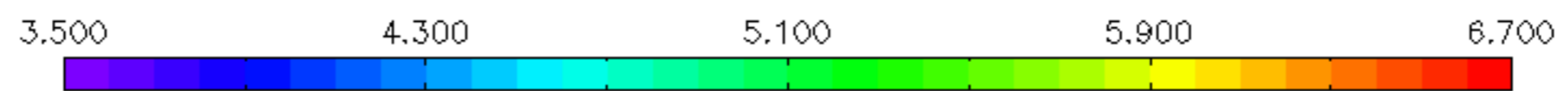
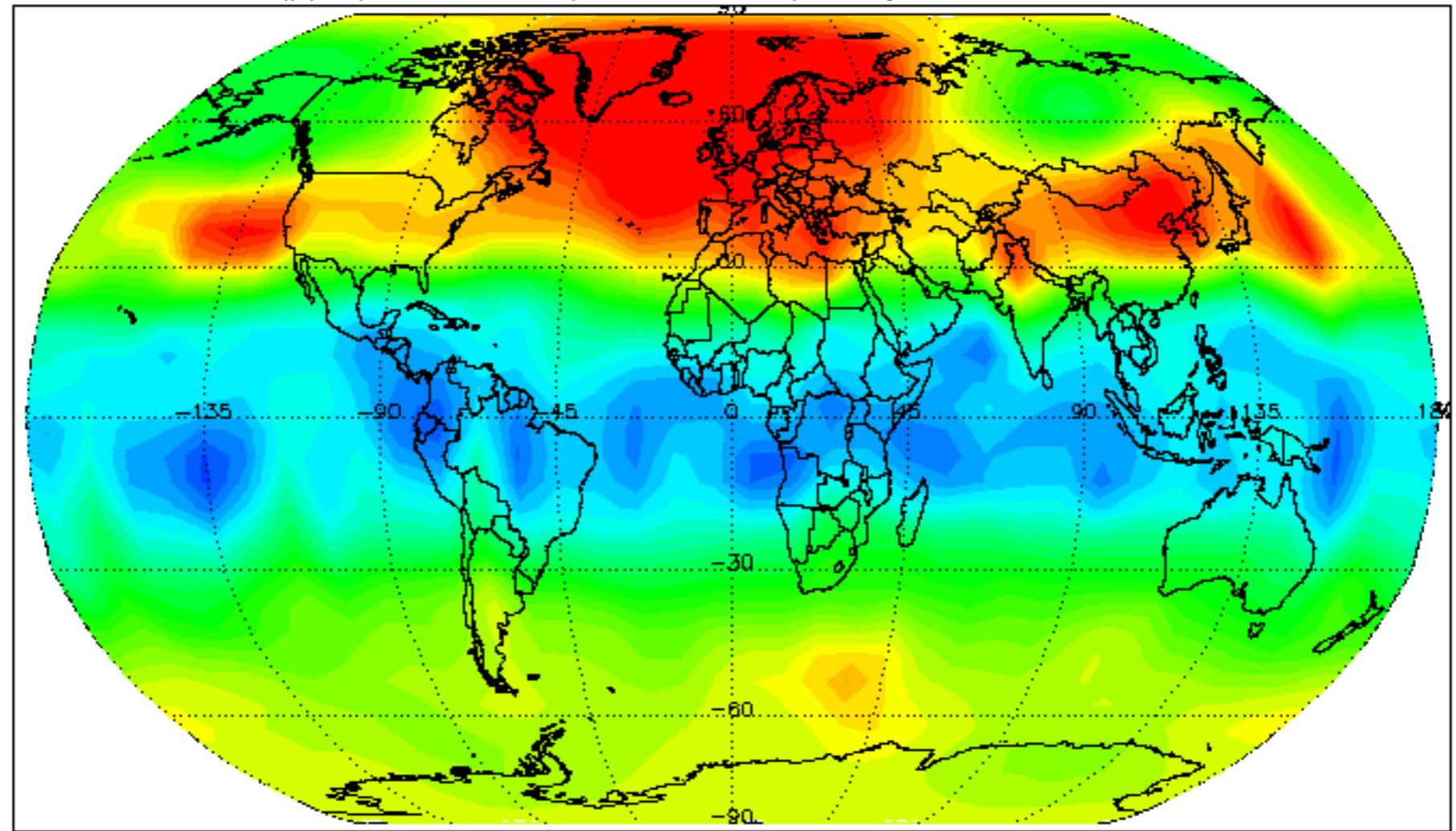




N2O (ppb) at: 1700 K (45km, 1.5hPa). Daily mean: 11-FEB-2012



H2O (ppm) at: 850 K (32km, 10hPa). Daily mean: 11-FEB-2012



O3 (ppm) at: 490 K (19km, 55hPa). Daily mean: 11-FEB-2012

