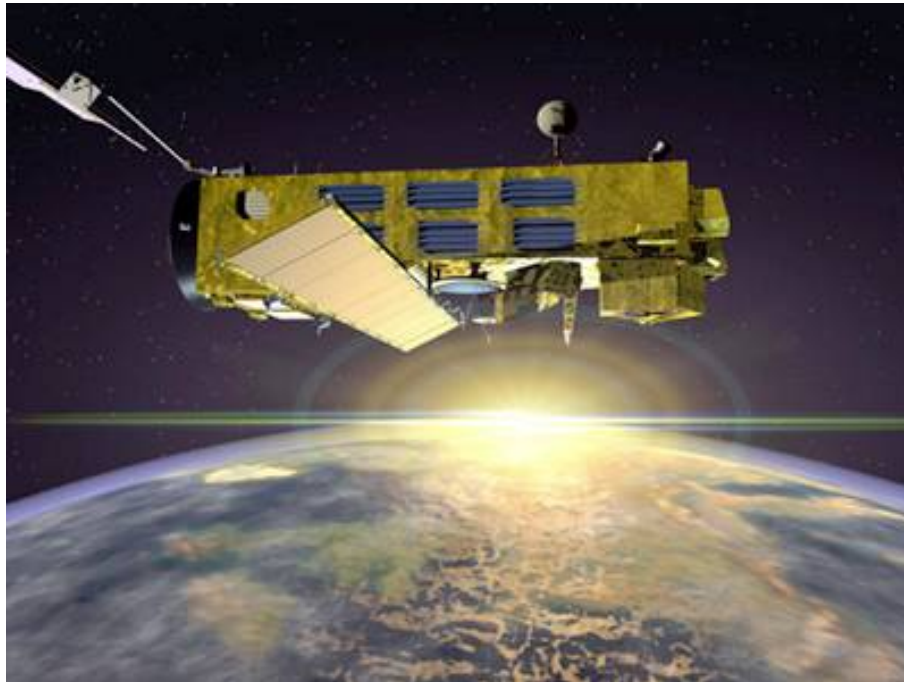

**ENVISAT GOMOS report:
February 2010**



Prepared by:	L. Saavedra de Miguel & M.G. Scarpino - SERCO
Approved by:	Angelika Dehn - SERCO
Inputs from:	GOMOS Quality Working Group, ECMWF
Issue:	1.0
Reference:	ENVI-SPPA-EOPG-TN-010-0006
Date of issue:	15 March 2010
Status:	Reviewed
Document type:	Technical Note

T A B L E O F C O N T E N T S

1 INTRODUCTION..... 3

1.1 Scope 3

1.2 References..... 3

1.3 Acronyms and Abbreviations..... 4

2 SUMMARY 6

3 INSTRUMENT AND DATA AVAILABILITY..... 8

3.1 GOMOS Unavailability Periods 8

3.2 Stars Lost in Centering..... 9

3.3 Stars lost due to VCCS anomaly..... 11

3.4 Data Generation Gaps..... 11

3.5 Data availability to users..... 12

4 INSTRUMENT CONFIGURATION AND PERFORMANCE..... 13

4.1 Instrument Operation and Configuration..... 13

4.1.1 Operations since beginning of mission 13

4.1.2 Current operations and configuration..... 16

4.2 Limb, Illumination conditions and instrument gain setting 18

4.3 Thermal Performance..... 19

4.4 Optomechanical Performance..... 22

4.5 Electronic Performance..... 23

4.5.1 Dark Charge Evolution and Trend..... 23

4.5.2 Signal Modulation 26

4.5.3 Electronic Chain Gain and Offset..... 26

4.6 Acquisition, Detection and Pointing Performance..... 27

4.6.1 SATU Noise Equivalent Angle 27

4.6.2 Tracking Loss Information..... 29

4.6.3 Most Illuminated Pixel (MIP)..... 32

5 LEVEL 1 PRODUCT QUALITY MONITORING 34

5.1 Processor Configuration..... 34

5.1.1 Version..... 34

5.1.2 Auxiliary Data files (ADF)..... 36

5.2 Quality Flags Monitoring..... 40

5.2.1 Quality Flags Monitoring (extracted from Level 2 products)..... 42

5.3 Spectral Performance..... 46

5.4 Radiometric Performance..... 47

5.4.1 Radiometric Sensitivity..... 47

5.4.2 Pixel Response Non Uniformity..... 48

5.5 Other Calibration Results..... 48

6 LEVEL 2 PRODUCT QUALITY MONITORING 49

6.1 Processor Configuration..... 49

6.1.1 Version..... 49

6.1.2 Auxiliary Data Files (ADF)..... 51

6.1.3 Re-Processing Status..... 52

6.2 Quality Flags Monitoring..... 53

6.3 Other Level 2 Performance Issues 54

6.3.1 Monthly Ozone average..... 54

6.3.2 Ozone dispersion monitoring 55

7 VALIDATION ACTIVITIES AND RESULTS 58
7.1 GOMOS-ECMWF Comparisons (Rossana Dragani, ECMWF input)..... 58

APPENDIX A..... 59

1 INTRODUCTION

The GOMOS monthly report documents the current status and recent changes to the GOMOS instrument, its data processing chain, and its data products.

The Monthly Report (hereafter MR) is composed of analysis results obtained by the Data Processing and Quality Control, combined with inputs received from the different entities working on GOMOS operation, calibration, product validation and data quality. These teams participate in the GOMOS Quality Working Group:

- European Space Agency (ESRIN, ESOC, ESTEC-PLSO)
- IDEAS
- ACRI
- Service d'Aeronomie
- Finnish Meteorological Institute
- IASB-Belgian Institute for Space Aeronomy
- Astrium Space
- ECMWF

In addition, the group interfaces with the Atmospheric Chemistry Validation Team.

1.1 *Scope*

The main objective of the Monthly Report is to give, on a regular basis, the status of GOMOS instrument performance, data acquisition, results of anomaly investigations, calibration activities and validation campaigns. The following six sections compose the MR:

- Summary
- Unavailability
- Instrument Configuration and Performance
- Level 1 Product Quality Monitoring
- Level 2 Product Quality Monitoring
- Validation Activities and Results

1.2 *References*

- [1] ENVISAT Weekly Mission Operations Report #394, #395, #396 and #397
- [2] ECMWF GOMOS Monthly Reports
- [3] Routine update of the wavelength assignment, Gilbert Barrot (ACRI-ST), Issue 1 Revision 1, September 19, 2007

1.3 *Acronyms and Abbreviations*

ACVT	Atmospheric Chemistry Validation Team
ADC	Analogue-to-Digital Converter
ADF	Auxiliary Data File
ADS	Auxiliary Data Server
ANX	Ascending Node Crossing
AOCS	Attitude and Orbit Control System
ARB	Anomaly Review Board
ARF	Archiving Facility (PDS)
CCU	Central Communication Unit
CFS	CCU Flight Software
CNES	Centre National d'Études Spatiales
CTI	Configuration Table Interface / Configurable Transfer Item
CR	Cyclic Report
DC	Dark Charge
DMOP	Detailed Mission Operation Plan
DPM	Detailed Processing Model
DS	Data Server
DSA	Dark Sky Area
DSD	Data Set Descriptor
ECMWF	European Centre for Medium Weather Forecast\
EO	Earth Observation
EQSOL	Equipment Switch Off Line
ESA	European Space Agency
ESL	Expert Support Laboratory
ESRIN	European Space Research Institute
ESTEC	European Space Research & Technology Centre
ESOC	European Space Operations Centre
FCM	Fine Control Mode
FinCoPAC	Finnish Products Archiving Center
FMI	Finnish Meteorological Institute
FOCC	Flight Operations Control Centre (ENVISAT)
FP1	Fast Photometer 1
FP2	Fast Photometer 2
GADS	Global Annotations Data Set
GOMOS	Global Ozone Monitoring by Occultation of Stars
GOPR	Gomos Prototype
GS	Ground Segment
HK	Housekeeping
IASB	Institut d'Aeronomie Spatiale de Belgique
IAT	Interactive Analysis Tool
ICU	Instrument Control Unit
IDEAS	Instrument Data quality Evaluation and Analysis
IDL	Interactive Data Language
IECF	Instrument Engineering and Calibration Facilities
IMK	Institute of Meteorology Karlsruhe (Meteorologisch Institut Karlsruhe)
INV	Inventory Facilities (PDS)

IPF	Instrument Processing Facilities (PDS)
JPL	Jet Propulsion Laboratory
LAN	Local Area Network
LMA	Levenberg-Marquardt Algorithm
LPCE	Laboratoire de Physique et Chimie de l'Environnement
LRAC	Low Rate Archiving Center
LUT	Look Up Table
MCMD	Macro Command
MDE	Mechanism Drive Electronics
MIP	Most Illuminated Pixel
MPH	Main Product Header
MPS	Mission Planning System
MR	Monthly Report
NRT	Near Real Time
OBDH	On-Board Data Handling
OBT	On Board Time
OCM	Orbit Control Manoeuvre
OOP	Out-of-plane
OP	Operational Phase of ENVISAT
OS	Operating System
PAC	Processing and Archiving Centre (PDS)
PCF	Product Control Facility
PDCC	Payload Data Control Centre (PDS)
PDHS	Payload Data Handling Station (PDS)
PDHS-E	Payload Data Handling Station – ESRIN
PDHS-K	Payload Data Handling Station – Kiruna
PDS	Payload Data Segment
PEB	Payload Equipment Bay
PLSOL	Payload Switch off Line
PMC	Payload Module Computer
PRNU	Pixel Response Non Uniformity
PSO	On-Orbit Position
QC	Quality Control
QUARC	Quality Analysis and Reporting Computer
QWG	Quality Working Group
RDV	RenDez-Vous
RGT	ROP Generation Tool
RIVM	Rijksinstituut voor Volksgezondheid en Milieu
ROP	Reference Operations Plan
RRM	Rate Reduction Mode
RTS	Random Telegraphic Signal
SA	Service d'Aeronomie
SAA	South Atlantic Anomaly
SATU	Star Acquisition and Tracking Unit
SFA	Steering Front Assembly
SFCM	Stellar Fine Control Mode
SFM	Steering Front Mechanism
SM	Service Module

SMNA	Servicio Meteorológico Nacional de Argentina
SMP	Set Measurement Parameter
SODAP	Switch On and Data Acquisition Phase
SPA1	Spectrometer A CCD 1
SPA2	Spectrometer A CCD 2
SPB1	Spectrometer B CCD 1
SPB2	Spectrometer B CCD 2
SPH	Specific Product Header
SQADS	Summary Quality Annotation Data Set
SSP	Sun Shade Position
STP	Set Thermal Parameter
SYSM	Stellar Yaw Steering Mode
SZA	Solar Zenith Angle
VCCS	Voice Coil Command Saturation

2 SUMMARY

Instrument availability (section 3.1): GOMOS autonomously switched to Heater/Refuse Mode (due to Fine stage out-of-range) 13 times during the reporting period.

Instrument operations (section 4.1.2): Different rallying gains have been used between 14th January – 12th February trying to avoid the VCCS anomalies and the anomalies “Fine stage out of range”. In order to overcome these problems, all the stars with an azimuth angle below 15 degrees have been removed from the MPS by ESOC on period 13th – 25th February, which means that the stars were planned but not measured. Starting from 25th February 2010 (around 20:04) the planning delivered by ESRIN does not contain anymore stars below 15 degrees in azimuth and the instrument is working well since then. The azimuth window is still set to 30 degrees (since 30th October 2009) and it is a sliding window with a minimum allowed azimuth angle set to +15 degrees (since 13th February 2010).

Voice-Coil Command Saturation (VCCS) Anomaly (section 3.3): Many Voice Coil Command Saturation anomalies occurred during the reporting month causing the loss of several star observations.

Data availability when instrument was in operation (section 3.4): The availability of Level 0 and Level 1b was quite low during the reporting period arriving to 60% during the 3rd week. The causes were the VCCS anomaly occurrences and the removal of stars below 15 degrees in azimuth from the MPS (the stars were planned but not measured).

Data availability for users (section 3.5): Routine dissemination of Level 1b and Level 2 products produced by the PDS to the users is enabled. Level 1b data are available on request to the EO Helpdesk (EOHelp@esa.int), while level 2 data are available for the whole mission on different ftp sites. All data (reprocessed, NRT and consolidated) are processed with the same version of GOMOS processor.

Wavelength monitoring (section 5.3): the wavelength shifts show a variation which was not expected after the implementation of the routine calibration on 14th December 2007. The QWG is working on this issue.

Pointing performance (section 4.6.1):

- **Sudden increase on September 2005:** as can be seen in Figure 4.6-1, the SATU NEA had a sudden increase on 8th September 2005 mainly in ‘Y’ axis. These values remained high, fluctuating between 1 and 1.8 microrad until December 2005 when they came back to the values they used to be before the increase of September. The reason why there was higher noise in the data causing the jump in daily SATU average is not known.
- **Gradual increase on mid April 2006:** a different problem was present since mid April 2006 until October 2007. A gradual increase of the daily SATU ‘Y’ mean was observed. This increase was due to fluctuations of the SATU ‘Y’ data observed at the beginning of nominal occultations (starting at 130 km that corresponds to an elevation angle of around 65°). The decrease of the start elevation angle of the occultation has no impact on the amplitude of the SATU ‘Y’ fluctuations. Investigations carried out by the ESL, ESA and industry pointed to a problem on the SFM (mechanical or electrical) and not to a problem on the SATU itself. Since October 2007 the fluctuations have disappeared and as a consequence the daily SATU ‘Y’ average has come back below the threshold set to 3 micro radians.
- **Sudden increase on December 2008:** similarly to the anomaly happened on April 2006, the SATU NEA had an increase on 29th December 2008 due to fluctuations of the SATU ‘Y’ data. The difference with respect to the previous anomaly is that this time, the increase was quite sudden and the fluctuations are present during the whole occultation, not only at the beginning of the occultation. The most critical effect of this anomaly is the loss of the star measurement high in the atmosphere, which means that many times the corresponding ozone profiles do not include the ozone peak present at around 25-30 km. After the increase of the elevation filter gain from 100 to 150 on 29th June 2009, the abortion of the star measurements was deeper in the atmosphere but still premature. Several configurations of the filter gain (tracking and rallying ones) were tested and after some reset/restart of the instrument, GOMOS was measuring nominally since 29th October 2009 with the “soft” patch uploaded (which represents an increase of the elevation tracking filter gain for low frequencies). The elevation rallying filter gain was set to several values during the reporting period in order to avoid the VCCS that appeared on 7th January after changing the planned azimuth from [15, 45] to [10, 40].

Temperatures (section 4.3): The CCD temperatures show the expected global increase due to the radiator ageing. Another expected variation of the temperatures, the seasonal one, with amplitude of around 1.5 degree can also be observed.

Modulation signal (section 4.5.2): The values of the modulation are daily extracted and plotted; they should not be very different from the ones coded into the processor: 1.40 ADU for SPA1 and 0.76 ADU for SPA2. The modulation signal shows high values during summer time for the ESRIN data, it now being confirmed that the South Atlantic Anomaly is the cause of these unexpected peaks. The quality of ESRIN data, in particular over the SAA zone, is impacted but the measure of this impact is under investigation. However, in the second half of the months of October of all years (2004-2009) the peaks are smaller because the DSA zone where the data are taken for this analysis is moving towards the Northern Hemisphere. At the end of October the DSA zone is definitely chosen by the planning system in the Northern Hemisphere (to fill the criteria ‘DSA in full dark limb conditions’) and the high peaks disappear.

Star detection performance (section 4.6.3): the stars should be detected not far from the SATU center, that is, pixel number 145 in elevation and number 205 in azimuth. The elevation MIP (Most Illuminated Pixel, which is the pixel at the moment of the detection) had a significant variation until 12th December

2003 when a new PSO algorithm was activated in order to reduce the deviations of the ENVISAT platform attitude with respect to the nominal one. Afterwards, the MIP position was quite stable around its nominal pixel values until the occurrence of the VCCS anomaly on January 2005. The reason for the change in trend observed after the anomaly is, at the moment, not understood. This behavior, currently stable at pixel 127 in elevation and 193 in azimuth, does not impact the data quality but may invalidate attitude monitoring by GOMOS and could represent a hidden anomaly.

Radiometric sensitivity monitoring (section 5.4.1): for stars 25 and 9, the UV ratio is greater than the threshold 10%. It is clear that there is a global decrease of UV ratios for all the stars. This confirms the expected degradation suffered by the UV optics that is, anyway, very small considering also the small variation for the rest of the stars. For the photometers radiometric sensitivity ratios it is observed that every star has a variation that seems to be seasonally related. The variation is significant for stars 25 and 18. After some investigations performed by the QWG that exclude an inaccurate reflectivity correction LUT, it seems that the PH1/2 radiometric sensitivity variations could come from the fact that the spectrometers and the photometers are not illuminated the same way when the straylight appears.

Auxiliary Data File (sections 5.1.2 and 5.3): Four GOM_CAL_AX files with updated DC maps and new wavelength assignment have been disseminated during the reporting period.

3 INSTRUMENT AND DATA AVAILABILITY

3.1 GOMOS Unavailability Periods

GOMOS suffer 13 autonomous interruptions (switches to Heater/Refuse mode) due to the “Fine stage out of range” anomaly and one planned interruption due to OCM.

Table 3.1-1: List of unavailability periods issued during the reporting month

Reference of unavailability report	Start time Star orbit	Stop time Stop orbit	Description
EN-UNA-2010/0032	6 Feb 2010 14:28:01 Orbit = 41504	6 Feb 2010 20:03:59 Orbit = 41508	GOMOS back to Operations after Heater/Refuse Mode due to Fine stage out-of-range
EN-UNA-2010/0036	8 Feb 2010 14:30:43 Orbit = 41534	8 Feb 2010 22:22:18 Orbit = 41538	GOMOS back to Operations after Heater/Refuse Mode due to Fine stage out-of-range
EN-UNA-2010/0038	9 Feb 2010 02:53:18 Orbit = 41540	9 Feb 2010 11:47:11 Orbit = 41546	GOMOS back to Operations after Heater/Refuse Mode due to Fine stage out-of-range
EN-UNA-2010/0040	10 Feb 2010 11:32:07 Orbit = 41560	10 Feb 2010 14:35:51 Orbit = 41562	GOMOS back to Operations after Heater/Refuse Mode due to Fine stage out-of-range
EN-UNA-2010/0042	10 Feb 2010 17:27:01 Orbit = 41563	10 Feb 2010 21:18:19 Orbit = 41565	GOMOS back to Operations after Heater/Refuse Mode due to Fine stage out-of-range
EN-UNA-2010/0044	11 Feb 2010 08:00:15 Orbit = 41572	11 Feb 2010 14:05:31 Orbit = 41575	GOMOS back to Operations after Heater/Refuse Mode due to Fine stage out-of-range
EN-UNA-2010/0046	12 Feb 2010 01:03:37 Orbit = 41582	12 Feb 2010 10:12:51 Orbit = 41588	GOMOS back to Operations after Heater/Refuse Mode due to Fine stage out-of-range

EN-UNA-2010/0049	13 Feb 2010 09:57:32 Orbit = 41602	13 Feb 2010 13:01:17 Orbit = 41604	GOMOS back to Operations after Heater/Refuse Mode due to Fine stage out-of-range
EN-UNA-2010/0051	15 Feb 2010 18:38:47 Orbit = 41637	15 Feb 2010 21:59:54 Orbit = 41638	GOMOS back to Operations after Heater/Refuse Mode due to Fine stage out-of-range
EN-UNA-2010/0052	16 Feb 2010 01:58:02 Orbit = 41640	16 Feb 2010 11:24:45 Orbit = 41645	OCM 16-Feb-2010
EN-UNA-2010/0056	19 Feb 2010 22:42:08 Orbit = 41695	20 Feb 2010 09:18:47 Orbit = 41702	GOMOS back to Operations after Heater/Refuse Mode due to Fine stage out-of-range
EN-UNA-2010/0058	20 Feb 2010 12:18:14 Orbit = 41703	20 Feb 2010 16:01:13 Orbit = 41706	GOMOS back to Operations after Heater/Refuse Mode due to Fine stage out-of-range
EN-UNA-2010/0060	20 Feb 2010 17:20:21 Orbit = 41706	22 Feb 2010 11:37:01 Orbit = 41730	GOMOS back to Operations after Heater/Refuse Mode due to Fine stage out-of-range

3.2 Stars Lost in Centering

The acquisition of a star initiates with a rallying phase where the telescope mechanism is directed towards the expected position of the star. Subsequently the acquisition procedure enters into detection mode, where the SATU star tracker output signal is pre-processed for spot presence survey and for the location of the most illuminated couple of adjacent pixels for two added lines, over the detection field. The Most Illuminated Pixel (MIP) defines the position of the first SATU centering window. The following step in the acquisition sequence is then initiated and consists of a centering phase where the SATU output signal is pre-processed for spot presence survey over the maximum of 10x10 pixel field. This allows the third phase to begin: the tracking phase.

The centering phase has occasionally resulted in loss of the star from the field of view. Figure 3.2-1 reports the percentage of the stars lost in centering in the period: 3 February 2003 - 28 February 2010. It can be seen that only three stars, mainly weak stars (higher star id means higher magnitude) are lost during the centering phase between 4% and 9.5 % of their planned observations. The majority of those are geo-localized over the SAA.

As the monitoring shows neither a trend nor excessively high percentages of loss, there is no need for the moment to reject any star from the catalogue, and there is no indication of instrument-related problems. Now with the instrument in a new operation scenario, the stars is also lost due to the anomaly “elevation voice coil command saturation” even if the instrument is not going anymore to Stand by / Refuse mode (section 3.3).

Statistics on stars lost in centering: 03-FEB-2003 until 28-FEB-2010

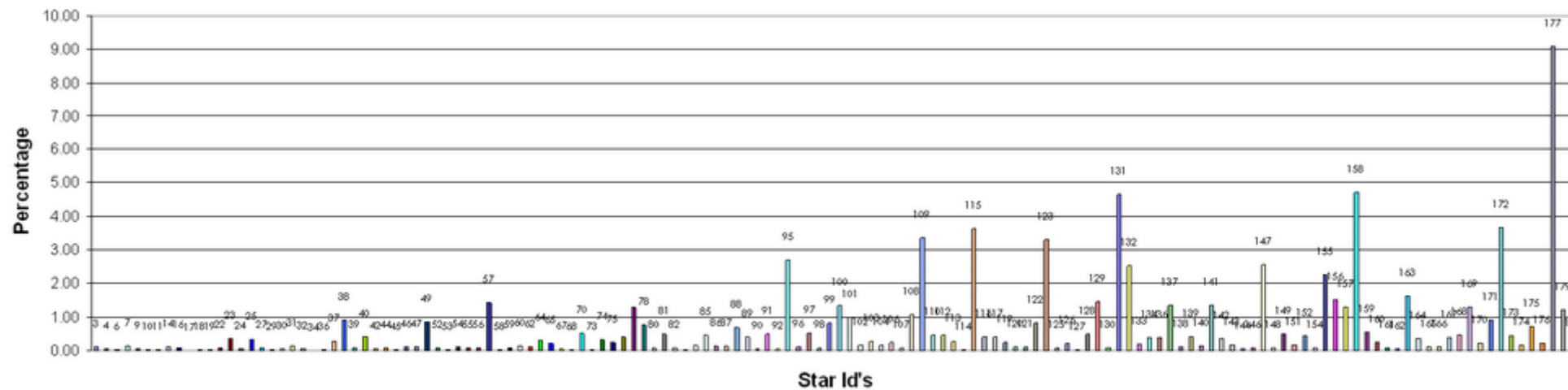


Figure 3.2-1: Statistics on stars that have been lost during the centering phase. The number above the columns corresponds to the Star ID

3.3 Stars lost due to VCCS anomaly

Many Voice Coil Command Saturation anomalies occurred during the reporting month until 25th February 2010 causing several stars losses.

3.4 Data Generation Gaps

The trend in percentage of available NRT data within the archives PDHS-K and PDHS-E is depicted in Figure 3.4-1 (when instrument was in operation). It is a good indicator on how the PDS chain is working in terms of generation and dissemination of data to the archives. The percentage is calculated once per week.

The availability of Level 0 and Level 1b was quite low during the reporting period arriving to 60% during the 3rd week. The causes were the VCCS anomaly occurrences and the removal of stars below 15 degrees in azimuth from the MPS (the stars were planned but not measured).

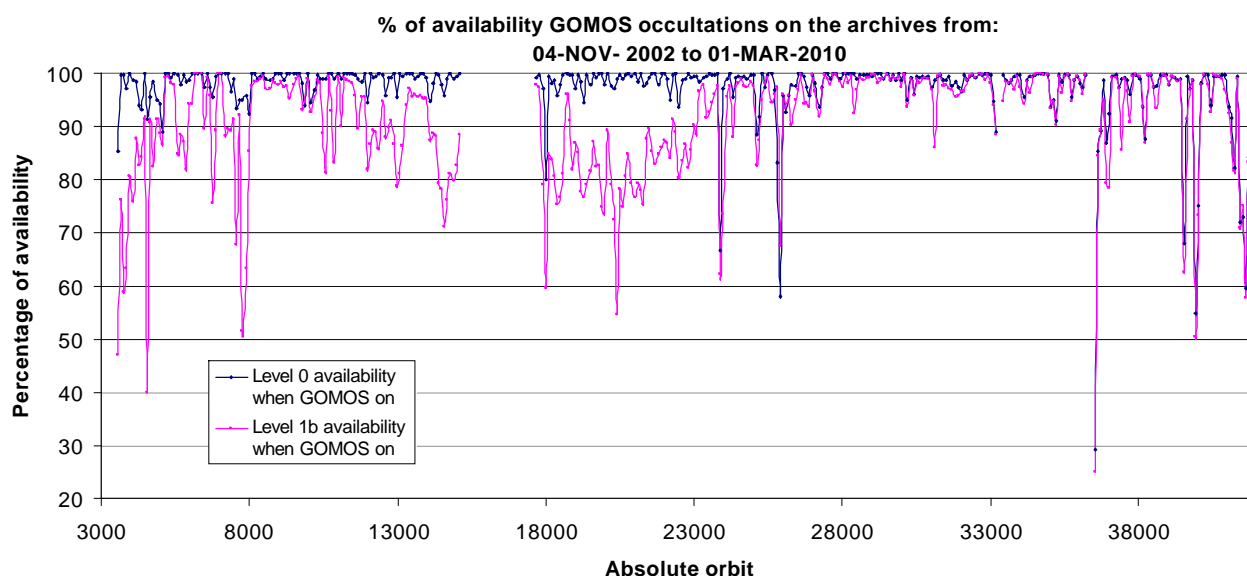


Figure 3.4-1: Percentage of level 0 and level 1b data availability on the archives PDHS-E and PDHS-K

Occultations planned to be acquired but for which no GOM_NL__0P data product has become available are presented in Figure 3.4-2 for the reporting period.

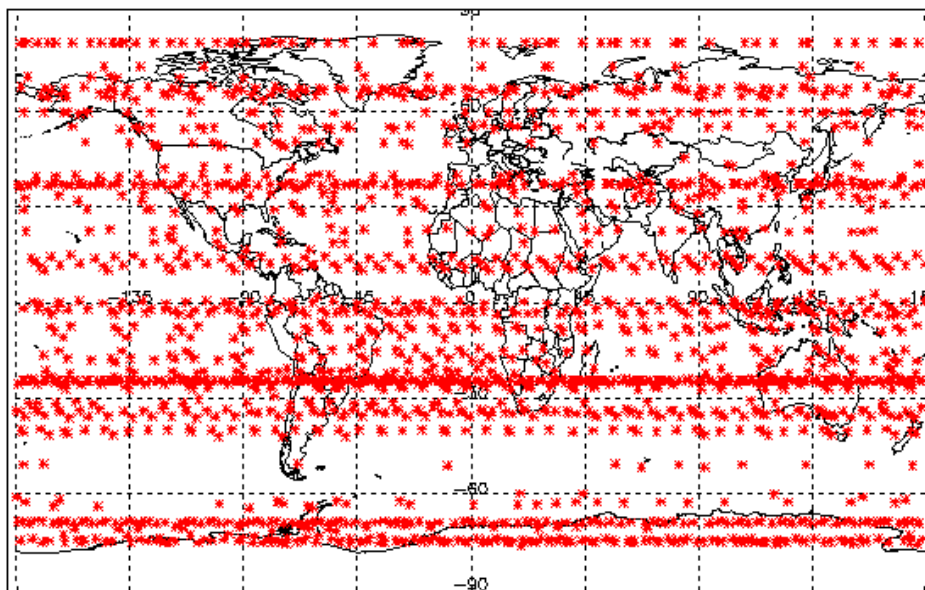


Figure 3.4-2: The red points are the occultation geo-location (starting) corresponding to planned data acquisitions for which no GOMOS level 0 product has become available

3.5 Data availability to users

Routine dissemination of higher-level products produced by the PDS to the users is enabled. Level 1b data are available on request to the EO Helpdesk (EOHelp@esa.int), while level 2 data are available for the whole mission. For information on the passwords, please, contact the EO Helpdesk (EOHelp@esa.int):

- Reprocessed products GOM_NL__2P are available at **the D-PAC ftp server** (name: **ftp-ops-dp.eo.esa.int**, IP-Address: **195.37.183.37**):
<ftp://gomo2usr@ftp-ops-dp.eo.esa.int> from **August 2002 to 4th July 2006**.
- Near Real Time products GOM_NL__2P (generated three hours after sensing time) are available on the following servers:
<ftp://gomosusr@oa-es.eo.esa.int> (ESRIN data). **A seven-day rolling archive has been set-up on this server.**
<ftp://gomosusr@oa-ks.eo.esa.int> (KIRUNA data). **A seven-day rolling archive has been set-up on this server.**
- Consolidated products GOM_NL__2P (generated three weeks after sensing time) are available at D-PAC ftp server
<ftp://gomo2usr@ftp-ops-dp.eo.esa.int> **since 23 July 2006**

All data (reprocessed, NRT and consolidated) are processed with the same version of GOMOS processor.

4 INSTRUMENT CONFIGURATION AND PERFORMANCE

4.1 Instrument Operation and Configuration

4.1.1 OPERATIONS SINCE BEGINNING OF MISSION

GOMOS has had different operational scenarios during the mission:

- **End of March 2003 to July 2003:** during this period the azimuth range had to be decreased in steps (Table 4.1-1) to avoid an instrument problem (“Voice_coil_command_saturation” anomaly) that caused GOMOS to go into STAND BY/REFUSE mode
- **July 2003:** the driver assembly was switched to the redundant B-side and since that date the full azimuth range (-10.8, +90.8) was again available
- **25th January 2005:** A second major anomaly occurred. Between this date and until the instrument was declared operational again (29th August 2005), GOMOS has been operated for testing and anomaly investigation purposes in different operation scenarios.
- **29th August 2005:** GOMOS operational again with reduced azimuth window of 20 degrees
- **9th October 2005:** azimuth window moved from 20 to 25 degrees
- **12th March 2006:** the reduced azimuth window of 25 degrees becomes a sliding window
- **2nd February 2008:** azimuth window moved from 25 to 30 degrees
- **21st August 2008:** minimum allowed azimuth angle set to +2 degrees
- **3rd March 2009:** azimuth range fixed to [+30, +50]
- **17th July 2009:** azimuth range fixed to [+25, +50]
- **October 2009:** many filter gain changes (in rallying and tracking) with the aim of overcoming the elevation pointing degradation and the VCCS anomalies (Table 4.1-3). On 29th October 2009 the configuration was fixed to: “soft” patch for tracking controller tuning uploaded and rallying filter gain set to 10 (nominal was 7.64). On 30th October 2009 the reduced azimuth window is enlarged to 30 degrees and becomes a sliding window with a minimum allowed azimuth angle set to +5 degrees. Many rallying filter gains were again tested during January/February 2010 in an attempt of avoiding the VCCS anomalies that appeared on 7th January 2010 after the azimuth window was moved from [15, 45] to [10, 40].

The changes in azimuth configuration during the whole mission until end of reporting period are summarized in Table 4.1-1.

Table 4.1-1: Historical changes in Azimuth configuration when GOMOS is in operations

Date	Orbit	Minimum Azimuth (°)	Maximum Azimuth (°)	Comment
01-MAR-2002		-10.8	+90.8	Nominal
29-MAR-2003 17:40	5635	0.0	+90.8	Reduced
31-MAY-2003 06:22	6530	+4.0	+90.8	Reduced
16-JUN-2003 16:17	6765	+12.0	+90.8	Reduced
15-JUL-2003 01:39	7200	-10.8	+90.8	Nominal
25-JAN-2005 23:33	15200	tests	tests	Different configurations for testing purposes
29-AUG-2005 02:52	18280	-10	+10	Reduced
26-SEP-2005 01:32	18680	-5	+20	Reduced
03-OCT-2005 01:12	18780	-5	+15	Reduced
09-OCT-2005 21:30	18878	-5	+20	Reduced
12-MAR-2006 17:29	21080	+10	+35	Reduced

09-APR-2006 12:47	21480	+5	+30	Reduced
16-APR-2006 15:48	21580	0	+25	Reduced
30-APR-2006 15:08	21780	-5	+20	Reduced
07-MAY-2006 14:48	21880	0	+25	Reduced
14-MAY-2006 14:28	21980	+15	+40	Reduced
28-MAY-2006 13:47	22180	+20	+45	Reduced
04-JUN-2006 13:27	22280	+15	+40	Reduced
18-JUN-2006 12:47	22480	+20	+45	Reduced
25-JUN-2006 12:27	22580	0	+25	Reduced
02-JUL-2006 12:07	22680	-5	+20	Reduced
16-JUL-2006 11:27	22880	0	+25	Reduced
23-JUL-2006 11:07	22980	+10	+35	Reduced
06-AUG-2006 10:26	23180	0	+25	Reduced
27-AUG-2006 09:26	23480	+5	+30	Reduced
03-SEP-2006 09:06	23580	0	+25	Reduced
10-SEP-2006 08:46	23680	-5	+20	Reduced
01-OCT-2006 07:45	23980	+5	+30	Reduced
15-OCT-2006 07:05	24180	-5	+20	Reduced
22-OCT-2006 06:45	24280	0	+25	Reduced
29-OCT-2006 06:25	24380	-5	+20	Reduced
05-NOV-2006 06:05	24480	10	+35	Reduced
12-NOV-2006 05:45	24580	5	+30	Reduced
03-DEC-2006 04:44	24880	20	+45	Reduced
10-DEC-2006 04:24	24980	10	+35	Reduced
17-DEC-2006 20:50	25090	0	+25	Reduced
24-DEC-2006 03:44	25180	5	+30	Reduced
07-JAN-2007 03:04	25380	0	+25	Reduced
14-JAN-2007 02:44	25480	-5	+20	Reduced
21-JAN-2007 02:23	25580	0	+25	Reduced
28-JAN-2007 02:03	25680	-5	+20	Reduced
04-FEB-2007 01:43	25780	-10	+15	Reduced
11-FEB-2007 01:23	25880	-5	+20	Reduced
18-FEB-2007 01:03	25980	0	+25	Reduced
25-FEB-2007 00:43	26080	+5	+30	Reduced
04-MAR-2007 00:23	26180	+15	+40	Reduced
11-MAR-2007 00:03	26280	+20	+45	Reduced
24-MAR-2007 23:22	26480	0	+45	Reduced
31-MAR-2007 23:02	26580	+5	+30	Reduced
07-APR-2007 22:42	26680	+10	+35	Reduced
14-APR-2007 22:22	26780	+5	+30	Reduced
21-APR-2007 22:02	26880	0	+25	Reduced
28-APR-2007 21:42	26980	-5	+20	Reduced
12-MAY-2007 21:02	27180	20	+45	Reduced
19-MAY-2007 20:41	27280	+10	+35	Reduced
09-JUN-2007 19:41	27580	+15	+40	Reduced
16-JUN-2007 19:21	27680	-5	+20	Reduced
23-JUN-2007 19:01	27780	0	+25	Reduced
07-JUL-2007 18:21	27980	-5	+20	Reduced
04-AUG-2007 17:00	28380	0	+25	Reduced
11-AUG-2007 16:40	28480	5	+30	Reduced
18-AUG-2007 16:20	28580	0	+25	Reduced
26-AUG-2007 16:00	28680	10	+35	Reduced
04-SEP-2007 04:01	28816	+65	+90	Reduced: SATU-Y test
05-SEP-2007 06:51	28832	+10	+35	Reduced
08-SEP-2007 15:19	28880	+15	+40	Reduced
15-SEP-2007 14:59	28980	+20	+45	Reduced

22-SEP-2007 14.39	29080	-5	+15	Reduced
29-SEP-2007 14.19	29180	+5	+30	Reduced
13-OCT-2007 13.39	29378	10	+35	Reduced
20-OCT-2007 13.19	29480	0	+30	Reduced
24-OCT-2007 01.09	29530	0	+25	Reduced
27-OCT-2007 12.59	29580	10	+35	Reduced
10-NOV-2007 12.18	29780	-5	+20	Reduced
17-NOV-2007 11.58	29880	0	+25	Reduced
24-NOV-2007 11.38	29980	+5	+30	Reduced
01-DEC-2007 11.18	30080	+15	+40	Reduced
08-DEC-2007 10.58	30180	+10	+35	Reduced
11-DEC-2007 22.48	30230	+5	+35	Reduced
15-DEC-2007 10.38	30280	+5	+30	Reduced
22-DEC-2007 10.18	30380	0	+25	Reduced
05-JAN-2008 09.37	30580	-1	+24	Reduced
12-JAN-2008 09.17	30680	-2	+23	Reduced
19-JAN-2008 08.57	30780	-7	+18	Reduced
26-JAN-2008 08.37	30880	-2	+23	Reduced
02-FEB-2008 08.17	30980	-6	+24	Reduced
16-FEB-2008 07.37	31180	-8	+22	Reduced
23-FEB-2008 07.17	31280	-2	+28	Reduced
01-MAR-2008 06.56	31380	+5	+35	Reduced
08-MAR-2008 06.36	31480	+13	+43	Reduced
15-MAR-2008 06.16	31580	+10	+40	Reduced
22-MAR-2008 16.00	31686	+14	+44	Reduced
29-MAR-2008 05.36	31780	-1	+29	Reduced
05-APR-2008 05.16	31880	-8	+22	Reduced
12-APR-2008 04.56	31980	-4	+26	Reduced
19-APR-2008 04.36	32080	-10	+20	Reduced
03-MAY-2008 03.55	32280	-5	+25	Reduced
10-MAY-2008 03.35	32380	-6	+24	Reduced
17-MAY-2008 03.15	32480	+9	+39	Reduced
24-MAY-2008 02.55	32580	+14	+44	Reduced
31-MAY-2008 12.39	32686	+16	+46	Reduced
07-JUN-2008 02.15	32780	+18	+48	Reduced
14-JUN-2008 01.55	32880	+5	+35	Reduced
21-JUN-2008 01.35	32980	+6	+36	Reduced
28-JUN-2008 01.14	33080	-2	+28	Reduced
05-JUL-2008 00.54	33180	-10	+20	Reduced
19-JUL-2008 00.14	33380	0	+30	Reduced
25-JUL-2008 23.54	33480	+5	+35	Reduced
01-AUG-2008 23.34	33580	-1	+29	Reduced
08-AUG-2008 23.14	33680	-3	+27	Reduced
15-AUG-2008 22.54	33780	+12	+42	Reduced
23-AUG-2008 08.37	33886	+5	+35	Reduced
29-AUG-2008 22.13	33980	+4	+34	Reduced
05-SEP-2008 21.53	34080	+6	+36	Reduced
12-SEP-2008 21.33	34180	+15	+45	Reduced
27-SEP-2008 06.56	34386	+4	+34	Reduced
03-OCT-2008 20.33	34480	+7	+37	Reduced
10-OCT-2008 20.13	34580	+4	+34	Reduced
17-OCT-2008 19.53	34680	+2	+32	Reduced
01-NOV-2008 05.16	34886	+3	+33	Reduced
07-NOV-2008 18.52	34980	+5	+35	Reduced
14-NOV-2008 18.32	35080	+40	+70	Reduced
28-NOV-2008 17.52	35280	+25	+55	Reduced

06-DEC-2008 03.35	35686	+17	+47	Reduced
12-DEC-2008 17.12	35480	+14	+44	Reduced
19-DEC-2008 16.51	35580	+10	+40	Reduced
26-DEC-2008 16.31	35680	+6	+36	Reduced
02-JAN-2009 16.11	35780	+3	+33	Reduced
10-JAN-2009 01.55	35886	+4	+34	Reduced
16-JAN-2009 15.31	35980	+2	+32	Reduced
12-FEB-2009 04.39	36360	+3	+23	Testing
12-FEB-2009 08.00	36362	+20	+40	Testing
12-FEB-2009 11.21	36364	+35	+55	Testing
12-FEB-2009 14.42	36366	+50	+70	Testing
12-FEB-2009 18.03	36368	+65	+85	Testing
02-MAR-2009 15.17	36624	+10	+20	Testing
02-MAR-2009 21.59	36628	+20	+30	Testing
03-MAR-2009 04.41	36632	+30	+40	Testing
03-MAR-2009 11.24	36636	+40	+50	Testing
03-MAR-2009 18.06	36640	+30	+50	Reduced
19 -JUN- 2009 08.08	38180	+25	+50	Testing
21 -JUN- 2009 10.26	38210	+15	+40	Testing
23 -JUN- 2009 12.44	38240	+5	+30	Testing
25 -JUN- 2009 15.02	38270	+20	+45	Testing
26 -JUN- 2009 07.48	38280	+30	+50	Reduced
17-JUL-2009 06.48	38580	+25	+50	Reduced
30-OCT-2009 01:46	40080	+20	+50	Reduced
06-NOV-2009 01:26	40180	+15	+45	Reduced
27-NOV-2009 00:26	40480	+23	+53	Reduced
04-DEC-2009 00:05	40580	+20	+50	Reduced
10-DEC-2009 23:45	40680	+15	+45	Reduced
07-JAN-2010 22:25	41080	+10	+40	Reduced
14-JAN-2010 22:05	41180	+5	+35	Reduced (but ESOC removed stars below 15° in azimuth between 13-25 February 2010)
25-FEB-2010 20:04	41780	+15	+45	Reduced

4.1.2 CURRENT OPERATIONS AND CONFIGURATION

Different rallying gains have been used between 14th January – 12th February 2010 (see Table 4.1-2) trying to avoid the VCCS anomalies and the anomalies “Fine stage out of range”. In order to overcome these problems, all the stars with an azimuth angle below 15 degrees have been removed from the MPS by ESOC on period 13th to 25th February, which means that the stars were planned but not measured. Starting from 25th February 2010 (around 20:04) the planning delivered by ESRIN does not contain anymore stars below 15 degrees in azimuth and the instrument is working well since then. The azimuth window is still set to 30 degrees (since 30th October 2009) and it is a sliding window with a minimum allowed azimuth angle set to +15 degrees (since 13th February 2010).

Table 4.1-2: Rallying gain changes during the reporting period

Value	Period
10	29-OCT-2009 → 14-JAN-2010
12	14-JAN-2010 → 18-JAN-2010
10	18-JAN-2010 → 25-JAN-2010
7.64	25-JAN-2010 → 04-FEB-2010
5.7	04-FEB-2010 → 05-FEB-2010
10	05-FEB-2010 → 08-FEB-2010
7.64	08-FEB-2010 → 12-FEB-2010
3.8	12-FEB-2010 → end of reporting month

The planned GOMOS operations for the reporting period are identified in Table 4.1-3. The operation scenario of GOMOS since 29th August 2005 until end of reporting month consists of:

- Planning 2 orbits per sequence (nominal were 5): this is done because in case of a VCCS failure with subsequent loss of star observation, the maximum loss of consecutive observations cannot exceed two orbits.
- Reduced azimuth field of view (nominal was [-10°, +90°]): as the VCCS anomaly occurs during the rallying of the telescope in the preparation for the star observation, it has been decided to reduce the field of view in order to minimize the failure occurrence probability. Different ranges have been used (Table 4.1-1) in order to optimize the number of occultations per orbit.

Table 4.1-3: GOMOS planned operations. The planning is built on a 2-orbit sequence basis (2 orbits with the same stars)

UTC Start	Start Orbit	Stop Orbit	Mode (Asynchronous or Synchronous)	Calibration (CAL) Dark Sky Area (DSA) or Nominal (Nom)
28-JAN-2010 21.25.00	41380	41477	S	Nom
04-FEB-2010 21.04.53	41478	41478	A	Nom
11-FEB-2010 14.02.22	41480	41577	S	Nom
11-FEB-2010 17.23.34	41578	41578	A	Nom
18-FEB-2010 13.42.15	41580	41677	S	Nom
18-FEB-2010 17.03.26	41678	41678	A	Nom
25-FEB-2010 13.22.07	41680	41777	S	Nom
25-FEB-2010 13.22.07	41780	41780	A	Nom
25-FEB-2010 16.43.19	41781	41877	S	Nom

There was no new Configurable Table Interface (CTI) uploaded to the instrument. The files used since the beginning of the mission are in Table 4.1-4. The yellow ones are the current ones in use.

Table 4.1-4: Historic CTI Tables

CTI filename		Dissemination to FOCC
SMP	CTI_SMP_GMVIEC20030716_123904_00000000_00000004_20030715_000000_20781231_235959.N1	16-JUL-2003
	CTI_SMP_GMVIEC20021104_075734_00000000_00000003_20021002_000000_20781231_235959.N1	06-NOV-2002
	CTI_SMP_GMVIEC20021002_082339_00000000_00000002_20021002_000000_20781231_235959.N1	07-OCT-2002
	CTI_SMP_GMVIEC20020207_154455_00000000_00000000_20020301_032709_20781231_235959.N1	21-FEB-2002
STP	CTI_STP_GMTIEC20021104_080137_00000000_00000000_20021002_000000_20781231_235959.N1	04-NOV-2002
	CTI_STP_GMVIEC20021002_083222_00000000_00000000_20021002_000000_20781231_235959.N1	02-OCT-2002

4.2 Limb, Illumination conditions and instrument gain setting

The **limb** and the **illumination condition** are two parameters that can confuse the user community. In Table 4.2-1 there are specified the product parameter (level 1b and level 2 of processor GOMOS/4.02 operational until 8th August 2006) where the flag is located, the meaning and the source. The difference between the limb (SPH/bright_limb) and the illumination condition (SUMMARY_QUALITY/limb_flag) is that the first one is coming from the mission scenario and the second is coming from the processing (defined from the computation of the sun zenith and azimuth angles at both instrument and tangent point locations). The SPH/bright_limb is for some occultations set to “dark” in the mission scenario while they are in fact in bright limb illumination conditions. To select the highest quality data for scientific applications, data with SUMMARY_QUALITY/limb_flag equal to ‘0’ should be used (see also the disclaimer: <http://envisat.esa.int/dataproducts/availability/disclaimers>). The instrument gain settings are also specified in Table 4.2-1 (they depend on the mission scenario flags) just for completeness of information. The same is valid for the prototype version GOPR_6.0a_6.0a and following ones (including the one that was used for the second reprocessing of 2002-2005 years), where the **limb** is in fields SPH/bright_limb and SUMMARY_QUALITY/dark_bright_limb and the **illumination condition** is in field SUMMARY_QUALITY/obs_ill_cond. For these prototypes **and the processor GOMOS/5.00 (or GOMOS/5.00L04, which is the same but running in Linux OS) in operations since 8th August 2006**, the illumination condition can have five values (see Table 4.2-2).

Table 4.2-1: Relationship between limb, illumination condition flags and instrument gain settings (IPF version GOMOS/4.02 and previous)

Products parameter	SPH/bright_limb	0 = Dark	1 = Bright	Coming from mission scenario
	SUMMARY_QUALITY/limb_flag	0 = Full Dark 1 = Bright 2 = Twilight	1 = Bright 2 = Twilight	In the geolocation process the sun zenith angle is computed and the occultation then is flagged accordingly
Instrument Gain	SPA Gain	3 (2)	0	Gain setting for spectrometer A. In parenthesis, values valid only for Sirius occultations (starID=1)
	SPB Gain	0	0	Gain setting for spectrometer B

Table 4.2-2: Relationship between limb, illumination condition flags and instrument gain settings (IPF version GOMOS/5.00 and following ones; prototype version GOPR 6.0a_6.0a and following ones)

Products parameter	SPH/bright_limb SUMMARY_QUALITY/dark_bright_limb	0 = Dark	1 = Bright	Coming from mission scenario
	SUMMARY_QUALITY/obs_ill_cond	0 = Full Dark 1 = Bright 2 = Twilight 3 = Straylight 4 = Twi.+Stray		In the geolocation process the sun zenith angle is computed and the occultation is then flagged accordingly
Instrument Gain	SPA Gain	3 (2)	0	Gain setting for spectrometer A. In parenthesis, values valid only for Sirius occultations (starID=1)
	SPB Gain	0	0	Gain setting for spectrometer B

4.3 Thermal Performance

Since the beginning of the mission, the hot pixel and RTS phenomena have been producing a continuous increase of the dark charge signal within the CCD detectors (see section 4.5.1). In order to minimize this effect, three successive CCD cool downs were performed in orbits 800 (25th April 2002), 1050 (13th May 2002) and 2780 (11th September 2002) with a total decrease in temperature of 14 degrees.

Figure 4.3-1 and Figure 4.3-2 display, respectively, the overall temperature variation and the temperature variation around the Ascending Node Crossing (ANX) time with a resolution of 0.4 degrees (coding accuracy for level 0 data).

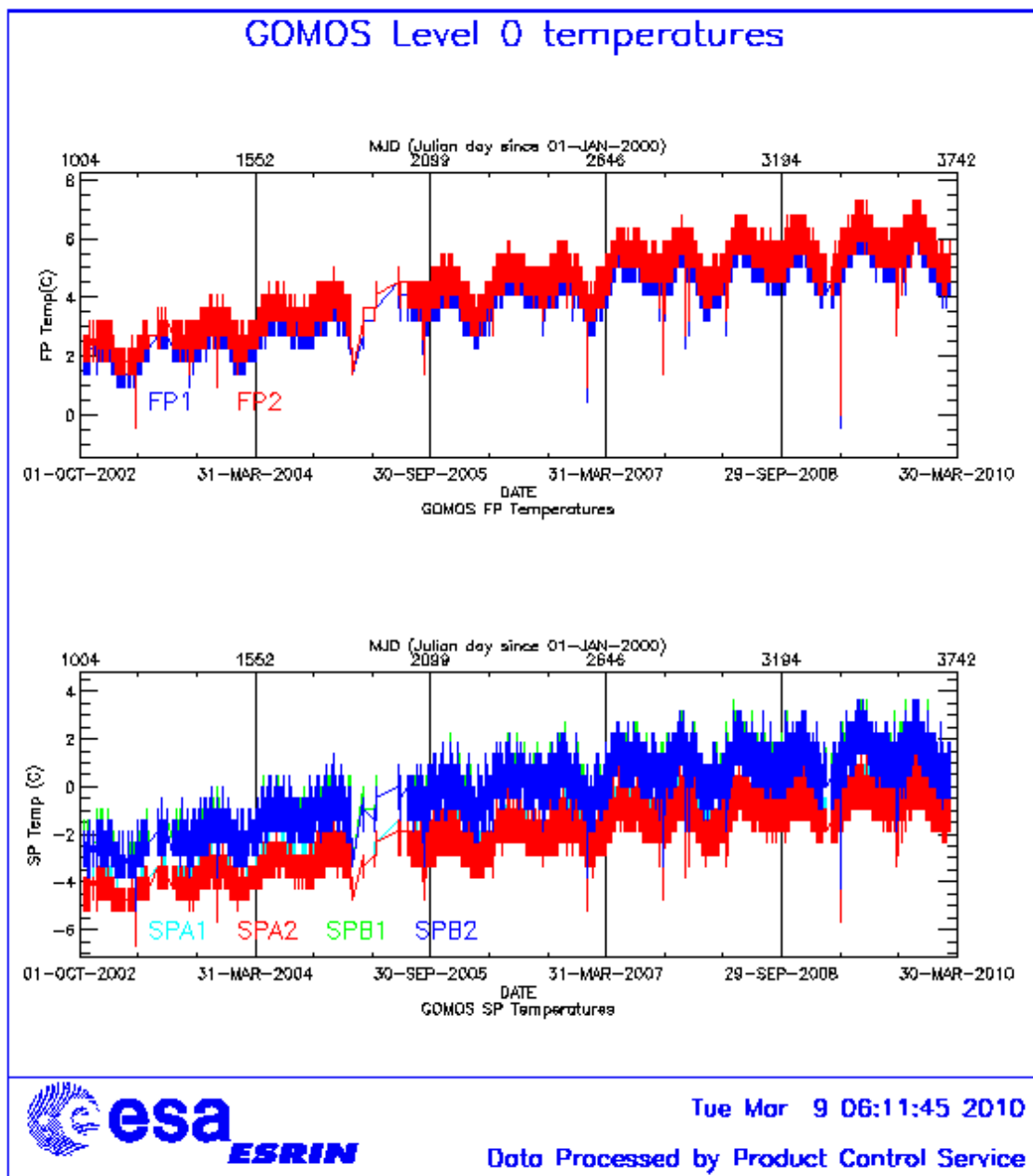


Figure 4.3-1: Level 0 temperature evolution of all GOMOS CCD detectors since October 2002 until the end of the reporting period

The CCD temperatures show the expected global increase due to the radiator ageing. Another expected variation of the temperatures, the seasonal one, can be also observed: at the beginning of mission the amplitude was around 0.8 but now it is around 1.5 degrees. The peaks that occur mainly in spectrometer B1 and B2 are also to be noted. They happen a little before the ANX for some consecutive orbits and every 8-10 days. Their origin is not known, as we did not find any correlation between these peaks and other activities carried out by other ENVISAT instruments.

The CCD temperature at almost the same latitude location (Figure 4.3-2) is monitored in order to detect any inter-orbital temperature variation. The abnormal decreases observed sometimes in all detectors are after GOMOS switch off periods, when the instrument did not have enough time to reach the nominal temperature before starting the measurements.

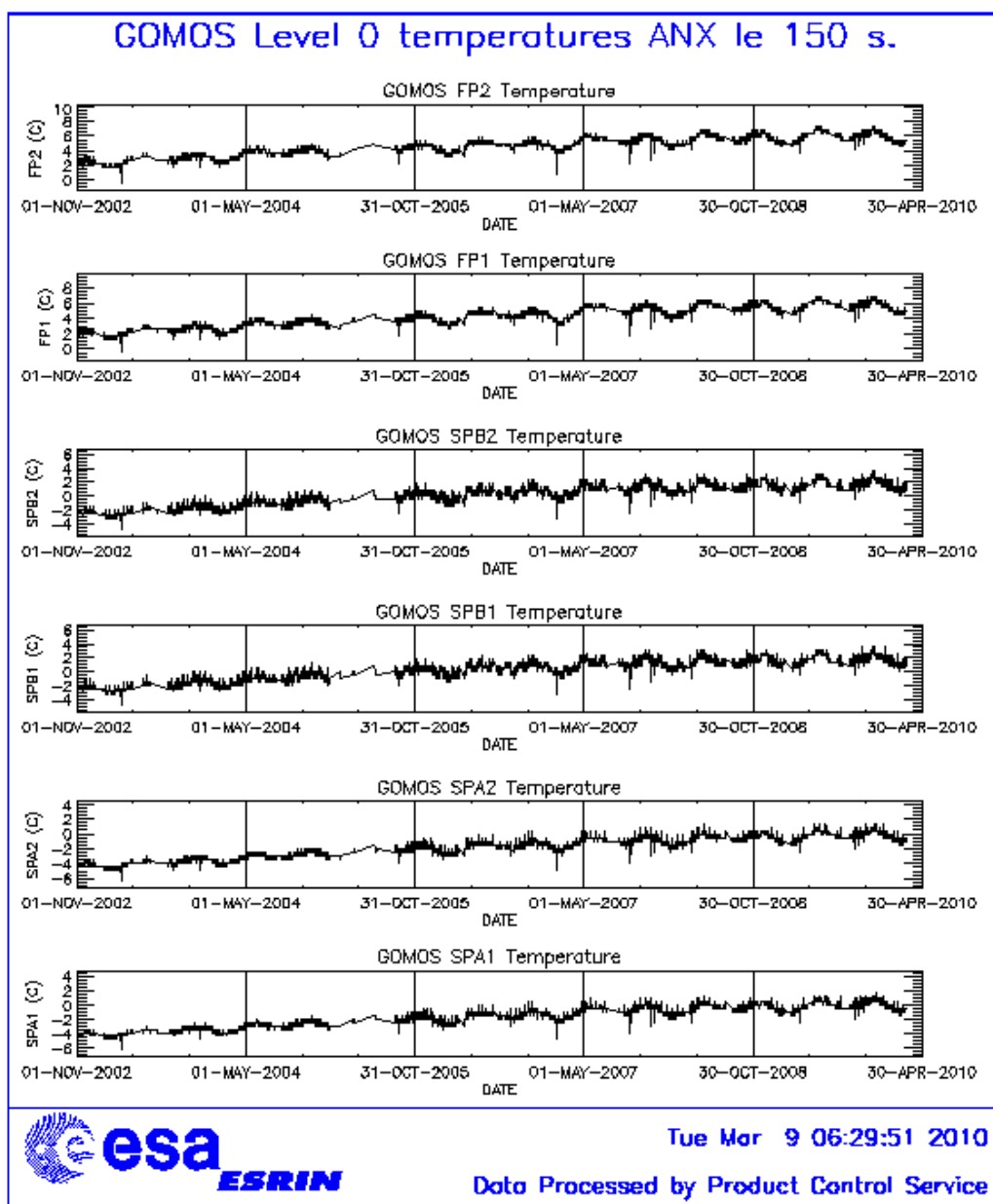


Figure 4.3-2: Level 0 temperature evolution of all GOMOS CCD detectors around ANX since November 2002 until the end of the reporting period

During the reporting period, the orbital temperature variation of the detector SPB2 for ascending and descending passes (Figure 4.3-3 and Figure 4.3-4) is nominal (2.5 - 3 degrees). The stability of the temperature during the orbit is important because it affects the position of the interference patterns. The phenomenon of the interference is present mainly in SPB and this Pixel Response Non-Uniformity (PRNU) is corrected during the processing.

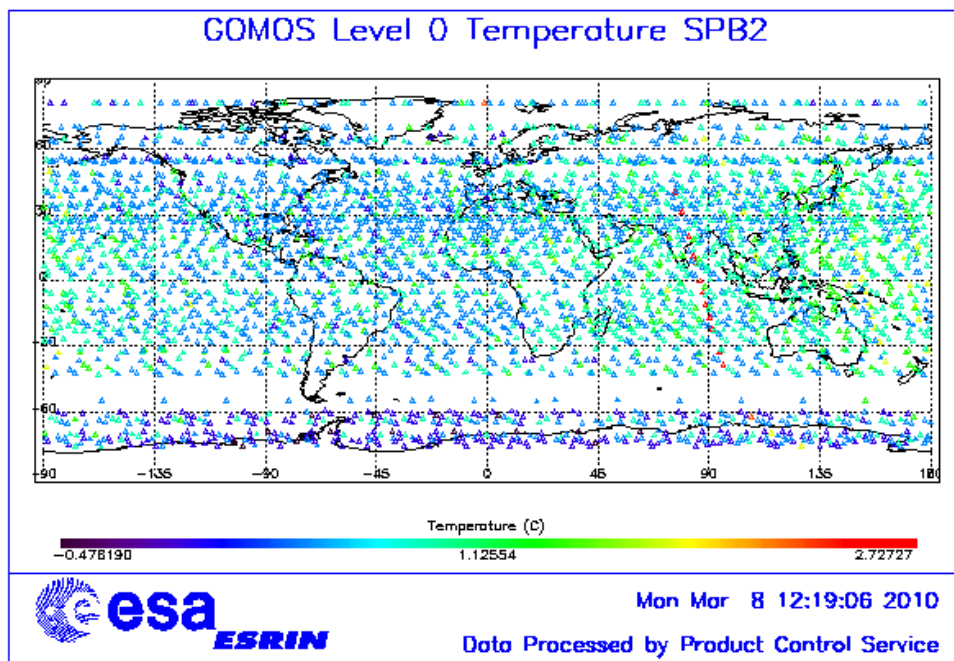


Figure 4.3-3: Ascending orbital variation of SPB2 temperature during reporting period

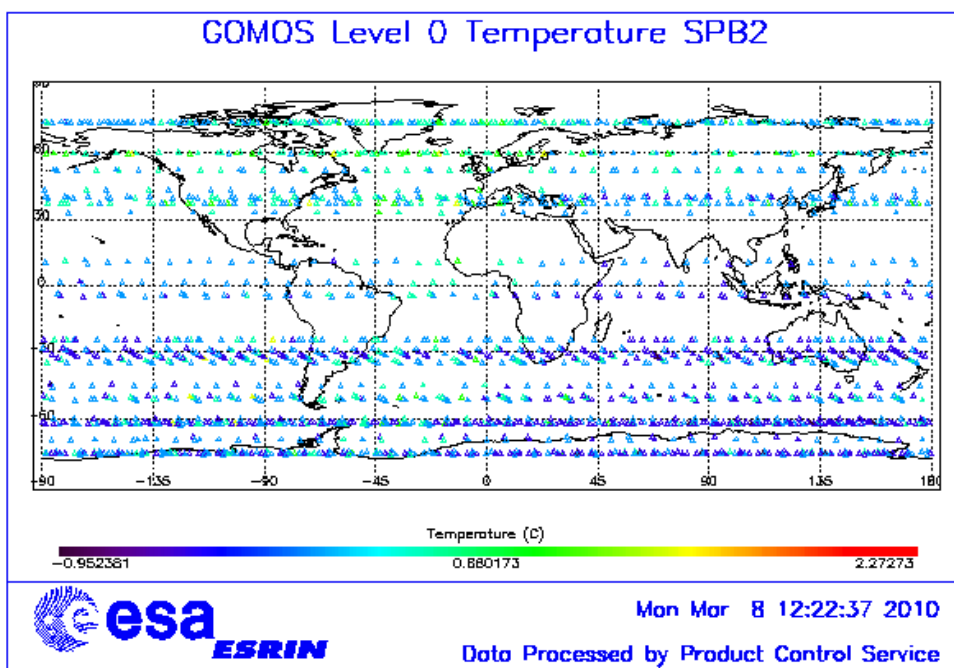


Figure 4.3-4: Descending orbital variation of SPB2 temperature during reporting period

4.4 Optomechanical Performance

- Version GOMOS/4.00 and previous ones: in the GOMOS processor versions GOMOS/4.00 and previous, the spectra are expected to be aligned along CCD lines, and therefore use only a single average line index per CCD. In Table 4.4-1, the mean values of the location of the star signal for all the calibration analysis done is reported. The ‘left’ and ‘right’ values are calculated (the whole interval is not used) because the spectra shows a slight slope, more pronounced in spectrometer B. In Table 4.4-2, mean values of the location of the star signal are calculated for some specific wavelength intervals. These intervals have been changed between the calibration performed in September 2002 and the ones performed afterwards (until November 2003). Table 4.4-3 reports the average location of the star spot on the photometer 1 and 2 CCD.
- Version GOMOS/4.02: in this processor version operational since 23rd March 2004 until 8th August 2006, a Look Up Table (LUT) gives the line index of the spectra location as a function of the wavelength. The values obtained during calibration exercises are shown in Table 4.4-4. These values should be similar to the ones of the LUT; otherwise the LUT should be updated. However this characterization curve is not exactly the location of the star spectrum on the CCD but rather a combination of this position and some artefact created by the shape of the instrument optical point spread function (PSF). The exact shape is actually a straight line (especially for SPB) that has been characterised in 2005.
- Current version GOMOS/5.00 (since 8th August 2006): the exact shape of the CCD spectra location curve (which is a straight line) that has been characterised in 2005 was implemented in the current set of GOMOS ADFs. The position of the spectra convoluted with the PSF is calculated during the processing.

Table 4.4-1: Mean value of the location of the star signal during the occultation at the edges of every band (mean over 50 values, filtering the outliers)

	UV (SPA1) left/right	VIS (SPA2) left/right (Inverted spectra)	IR1 (SPB1) left/right	IR2 (SPB2) left/right
11/09/2002	80.7/80.7	79.8/79.5	82.8/81.9	83.1/82.1
01/01/2003	80.7/80.6	79.8/79.5	82.8/82.0	83.2/82.2
17/07/2003 & 02/08/2003	80.7/80.7	79.8/79.5	82.8/81.9	83.1/82.1
08/11/2003	80.7/80.6	79.8/79.5	82.8/81.9	83.1/82.1

Table 4.4-2: Mean value of the location of the star signal during the occultation (as table 4.4-1) but now within some wavelength intervals

	UV (SPA1)	VIS (SPA2)	IR1 (SPB1)	IR2 (SPB2)
11/09/2002 wl range (nm)	80.8 [300-330]	79.8 [500-530]	82.6 [760-765]	82.9 [937-942]
01/01/2003 wl range (nm)	80.6 [350-360]	78.6 [650-670]	81.6 [760-765]	80.3 [935-945]
02/08/2003	80.6	79.7	82.5	82.8
08/11/2003	80.6	79.9	82.4	82.8

Table 4.4-3: Average column and row pixel location of the star spot on the photometer CCD during the occultation

	FP1 (column/row)	FP2 (column/row)
11/09/2002	11/4	5/5
01/01/2003	10/4	6/4.9
02/08/2003	10/4	6/5
08/11/2003	10/4	6/5

Table 4.4-4: Location of the star signal on the CCD's

Pixel Column	LUT (Pixel line)	Calibration on 10-APR-2004	Calibration on 04-DEC-2004	Calibration on 27-NOV-2005	Calibration on 19-FEB-2006	Calibration on 14-MAY-2006 and 11-JUN-2006
0	80.59	80.80	80.67	80.93	80.67	80.85
20	80.46	80.60	80.44	80.32	80.43	80.49
449	80.42	80.50	80.42	80.40	80.53	80.56
450	79.25	79.39	79.30	79.16	79.30	79.35
900	79.50	79.63	79.57	79.36	79.45	79.61
1415	79.70	79.76	79.76	80.00	79.81	79.93
1416	82.64	82.80	82.88	82.95	82.76	82.81
1500	82.31	82.60	82.66	82.63	82.58	82.55
1600	82.12	82.22	82.30	82.35	82.41	82.20
1700	81.97	82.04	82.08	82.09	82.05	82.06
1750	81.89	81.98	82.03	82.00	81.92	81.97
1800	81.78	81.91	81.96	81.93	81.83	81.98
1835	81.68	81.88	81.94	81.96	81.79	81.91
1836	82.98	83.10	83.10	83.27	83.17	83.08
2000	82.78	82.90	82.94	83.04	82.83	82.93
2100	82.33	82.70	82.73	82.82	82.83	82.67
2150	82.17	82.40	82.54	82.79	82.70	82.49
2350	81.83	82.00	82.00	82.68	81.96	82.11

4.5 Electronic Performance

4.5.1 DARK CHARGE EVOLUTION AND TREND

The trend of Dark Charge (DC) is of crucial importance for the final quality of the products, and is therefore subject to intense monitoring. As part of the DC there is:

- “Hot pixels”, a pixel is “hot” when its dark charge exceeds its value measured on ground, at the same temperature, by a significant amount.
- RTS phenomenon (Random Telegraphic Signal), it is an abrupt change (positive or negative) of the CCD pixel signal, random in time, affecting only the DC part of the signal and not the photon generated signal.

The temperature dependence of the DC would make this parameter a good indicator of the DC behaviour, but the hot pixels and the RTS are producing a continuous increase of the DC (see trend in Figure 4.5-1 and Figure 4.5-2). To take into account these phenomena, since version GOMOS/4.00 (the current one is GOMOS/5.00) a DC map per orbit is extracted from a Dark Sky Area (DSA) observation performed around ANX (full dark conditions). For every level 1b product (occultation), the actual thermistor temperature of the CCD is used to convert the DC map measured around ANX into an estimate of the DC at the time (and different temperature) of the actual occultation. When the DSA observation is not available, the DC map inside the calibration product that was measured at a given thermistor reference temperature is used; again, the actual thermistor temperature of the CCD is used to compute the actual map. Table 4.5-1 reports the list of products that used the DC maps inside the calibration file due to the non-availability of DSA observation. A “CAL DC map with no T dep.” means that, as the temperature information was not available for that occultation, the DC map used is exactly the one inside the Calibration product.

The “quality ranking” of the products depending on DC correction performed is as follows:

- Best quality: products with DC correction using DSA observation inside the orbit
- Less quality than previous ones: products with DC correction using the map inside the calibration product, thermal corrected (‘DC map used’ in Table 4.5-1)
- Less quality than previous ones: products with DC correction using the map inside the calibration product, no thermal corrected (‘DC map with no T dep.’ in Table 4.5-1)

Table 4.5-1: Table of level 1b products that used the Calibration DC maps instead of the DSA observation. (Complete table in APPENDIX A)

Product name	DC information
GOM_TRA_IPNPDE20100201_193212_000000452086_00300_41436_8122.N1	DC map with no T dep.
GOM_TRA_IPNPDE20100201_193357_000000422086_00300_41436_8123.N1	DC map used
GOM_TRA_IPNPDE20100201_193628_000000422086_00300_41436_8124.N1	DC map used
...	...
GOM_TRA_IPNPDE20100228_212020_000000342087_00186_41823_2474.N1	DC map used
GOM_TRA_IPNPDE20100228_212229_000000402087_00186_41823_2475.N1	DC map used
GOM_TRA_IPNPDE20100228_213004_000000392087_00186_41823_2476.N1	DC map used

The average DC inserted by the processor into the level 1b data products for the spectrometers SPA1 and SPB2 (per band: upper, central and lower) is plotted in Figure 4.5-1 and Figure 4.5-2. The abnormal decreases observed sometimes in all detectors are due to the temperature decreases that occur after GOMOS switch off periods. The same DC values are plotted in Figure 4.5-3 but for the ESRIN occultations belonging only to the reporting month.

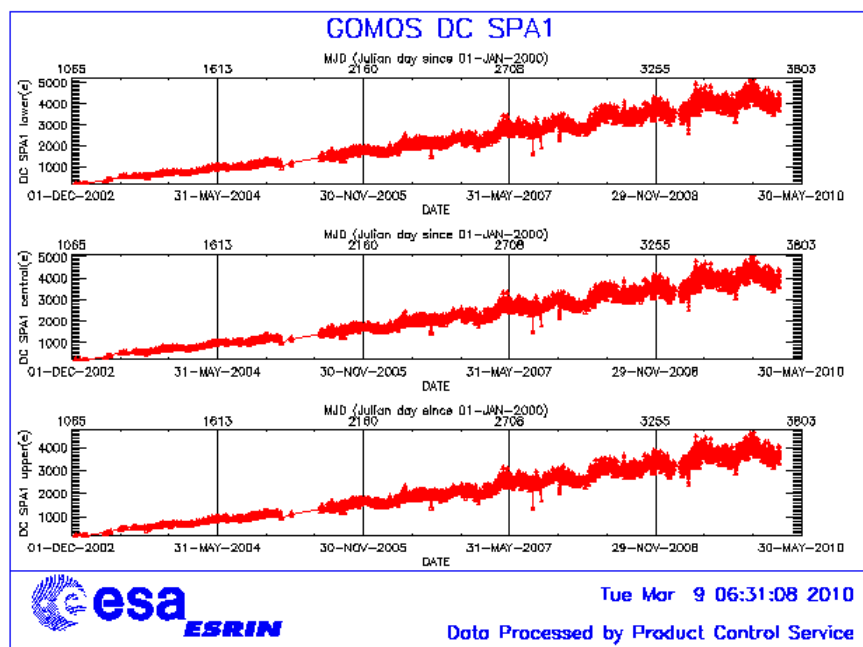


Figure 4.5-1: Mean DC evolution on SPA1 since 15th December 2002 until the end of the reporting period

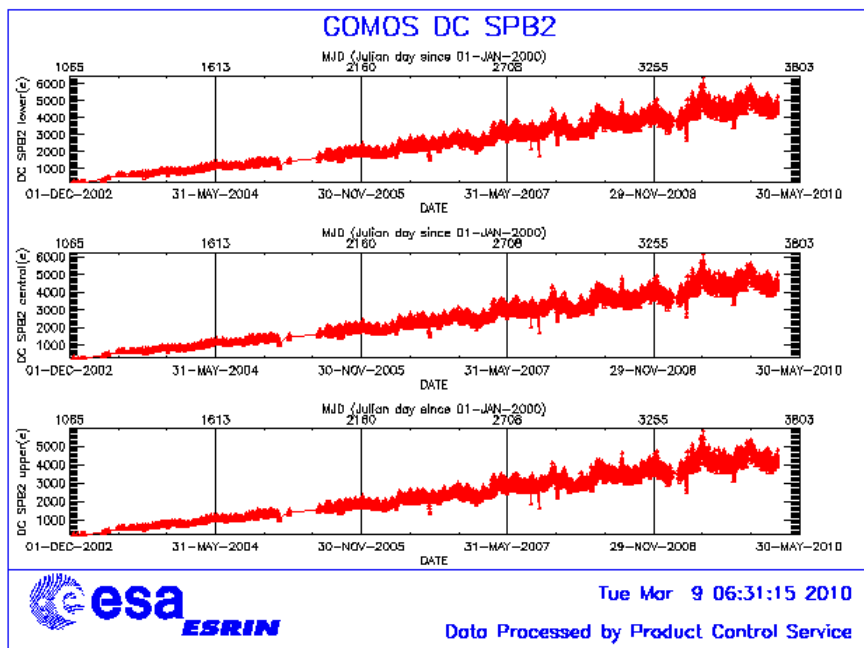


Figure 4.5-2: Mean DC evolution on SPB2 from 15th December 2002 until the end of the reporting period

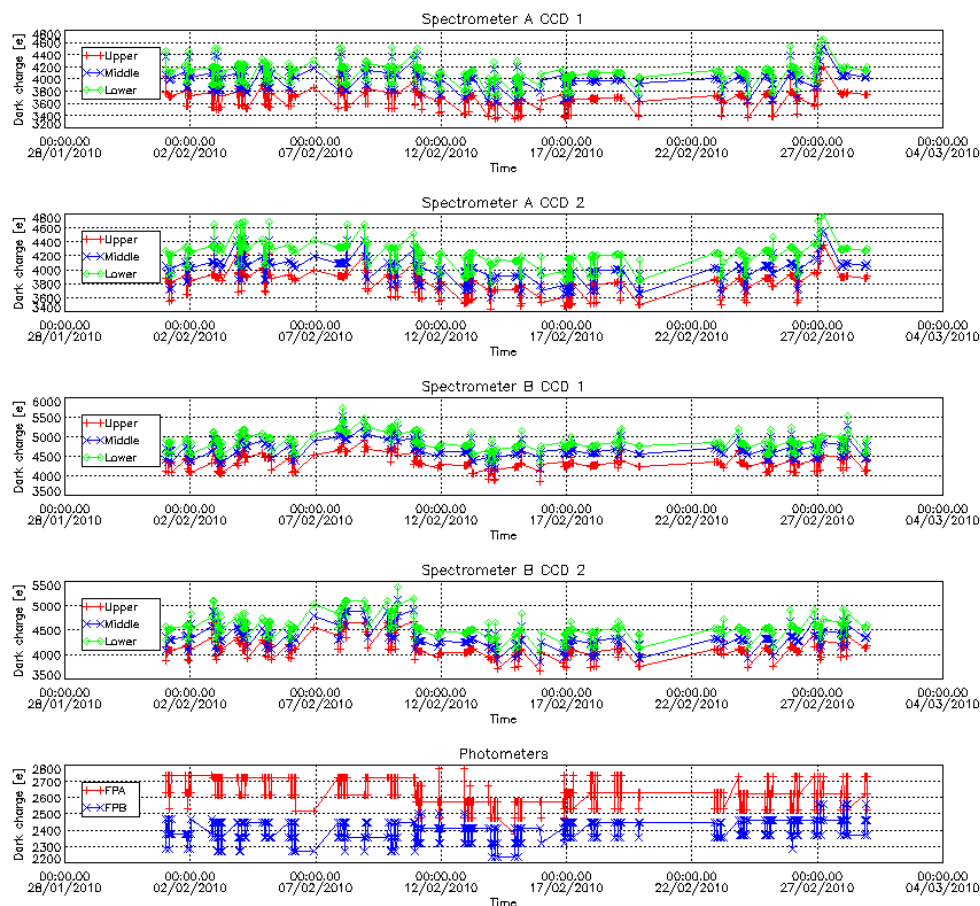


Figure 4.5-3: Mean Dark Charge of spectrometers during the reporting period

4.5.2 SIGNAL MODULATION

A parasitic signal was found to be systematically present, added to the useful signal, for the spectrometers A and B (Figure 4.5-4). The modulation is corrected in the data processing for spectrometers A1 and A2, for spectrometer B it has much smaller amplitude and so it is not corrected.

The values of the modulation (Figure 4.5-4) are daily extracted and plotted; they should not be very different from the ones coded into the processor: 1.40 ADU for SPA1 and 0.76 ADU for SPA2.

Figure 4.5-4 shows high values during summer time for the ESRIN data, it now being confirmed that the South Atlantic Anomaly is the cause of these unexpected peaks. The quality of ESRIN data, in particular over the SAA zone, is impacted but the measure of this impact is under investigation. However, in the second half of the months of October for all years (2004-2009) the peaks are smaller because the DSA zone where the data are taken for this analysis is moving towards the Northern Hemisphere. At the end of October the DSA zone is definitely chosen by the planning system in the Northern Hemisphere (to fill the criteria 'DSA in full dark limb conditions') and the high peaks disappear.

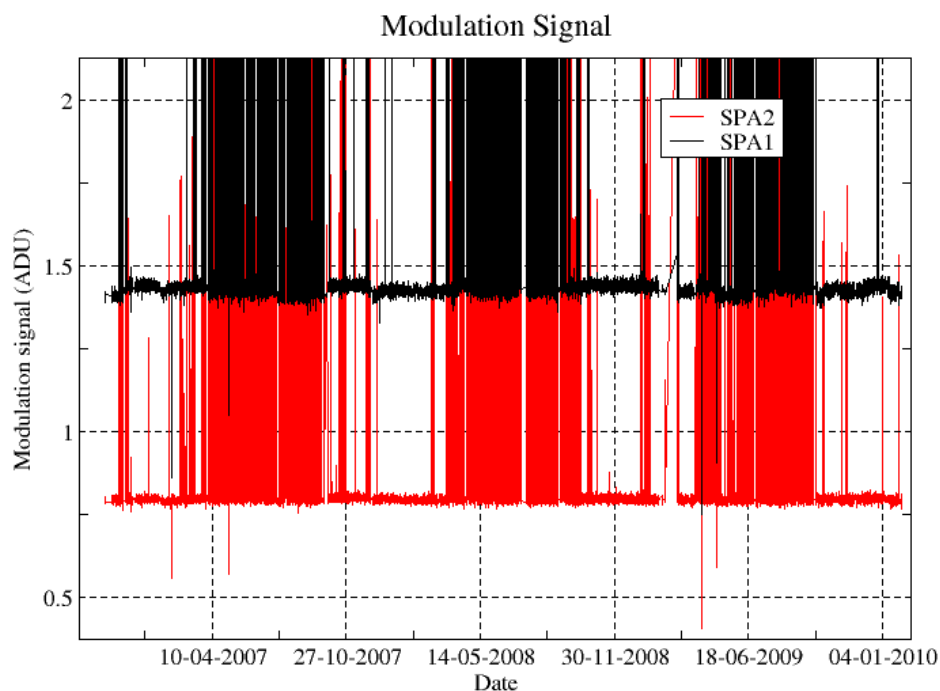


Figure 4.5-4: Modulation signal

4.5.3 ELECTRONIC CHAIN GAIN AND OFFSET

No new electronic chain gain and offset calibration has been done during the reporting period. The routine monitoring of the ADC offset is a good indicator of the ageing of the instrument electronics. The Figure 4.5-5 presents the evolution of the calibrated ADC offset for each spectrometer electronic chain.

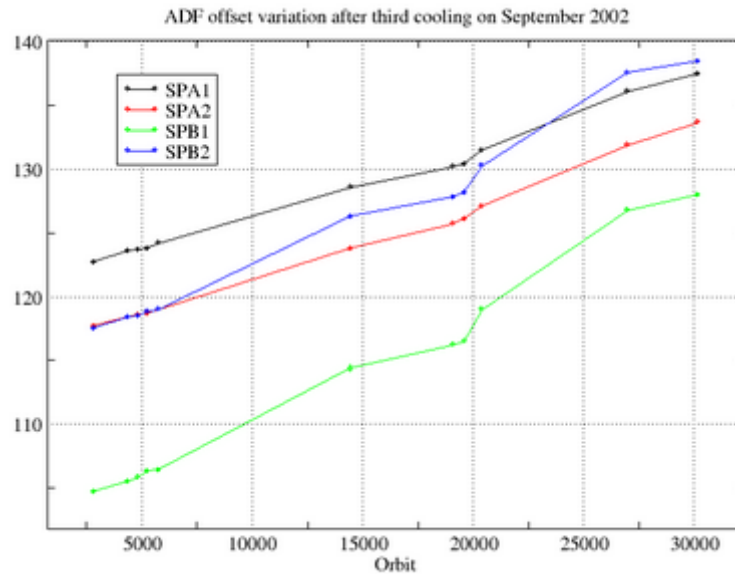


Figure 4.5-5: ADC offset evolution for each spectrometer electronic chain

The unexpected increase of this offset seems to be due to an external contribution. In the ADC offset calibration procedure, linearity observations are used with two integration times of 0.25 and 0.50 seconds to extrapolate to an integration time of 0 seconds that gives the complete chain offset and not only the ADC offset. The complete offset contains any possible offsets, and especially the static dark charge (i.e. the dark charge that does not depend on the spectrometer integration time). The presence of vertical lines visible in the measurement maps in spatial spread monitoring mode confirms that the memory area of the CCD is affected by the generation of hot pixels. These new hot pixels are one contributor to the increase observed in Figure 4.5-5.

A current QWG task consists in completing the analysis to confirm that the offset increase is also due to the expected dark charge increase in the memory area due to ageing. This can be proven by the study of the noise due to the increased dark charge. The increase of ADC offset will be assumed to be equal to the increase of ‘static dark charge’ and the corresponding noise will be computed and compared to the increase of the residual of the signal variance.

If we keep the ADC offset constant, as it is also used to compute the dark charge at band level (which is used to correct the samples in the level 1b processing), the increase of the static dark charge - not taken into account in the ADC offset - is compensated by an artificial increase of the calibrated dark charge. So, the star and limb spectra are correctly corrected for dark charge. A small bias can be added to the instrument noise due to the incorrect dark charge level. Anyway, this quantity is not large enough to require a modification of the ADC offset value.

4.6 Acquisition, Detection and Pointing Performance

4.6.1 SATU NOISE EQUIVALENT ANGLE

The Star Acquisition and Tracking Unit (SATU) noise equivalent angle (SATU NEA) consists of the statistical angular variation of the SATU data above the atmosphere. The mean of the standard deviation (STD over the 50 values per measurement) above 105 km are computed for every occultation, giving two values per occultation: one in the ‘X’ direction, one in the ‘Y’ direction. A mean value per day in

every direction and limb is calculated and monitored in order to assess instrument performance in terms of star pointing (Figure 4.6-1). Also monthly averages are calculated and plotted (Figure 4.6-2). The thresholds are 2 and 3 micro radians in ‘X’ and ‘Y’ directions respectively. Before May 2003, data above 90 km have been considered (instead of 105 km) but from May 2003 on, data taken in the mesospheric oxygen layer (located around 100 km altitude) have been avoided because they could cause fluctuations on the SATU data. Also the products with errors (error flag set) are discarded from May 2003 onwards.

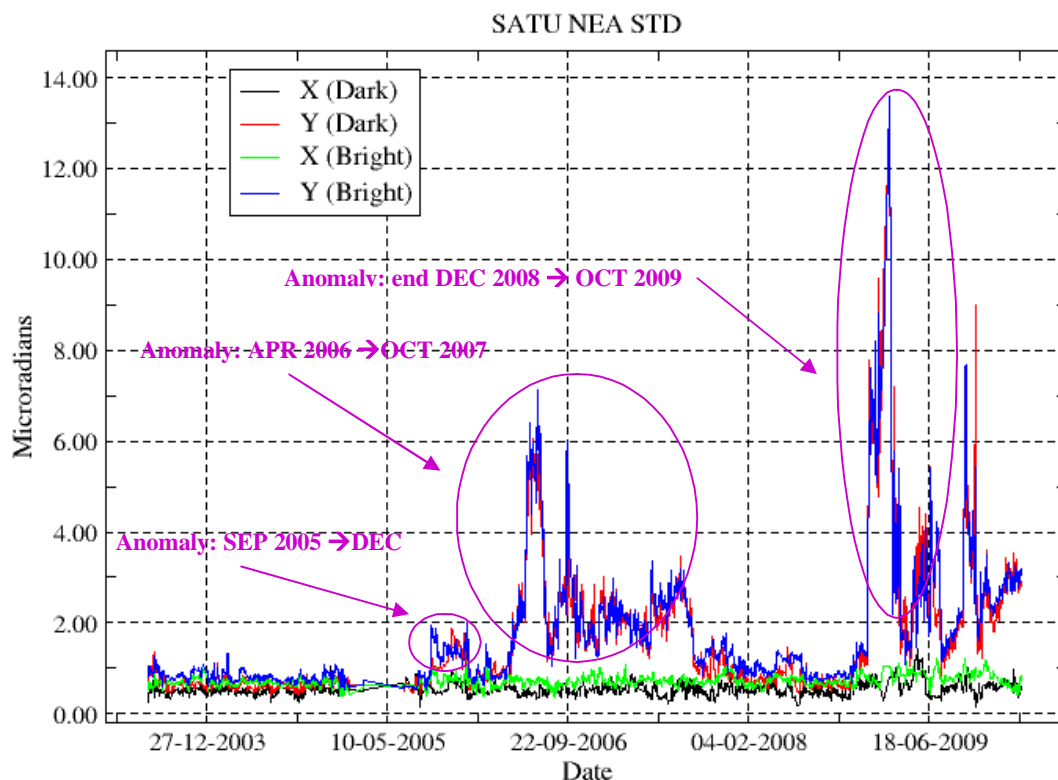


Figure 4.6-1: Average value per day of SATU NEA STD above 105 km

Different anomalies have affected the SATU during the mission:

- **Sudden increase on September 2005:** as can be seen in Figure 4.6-1, the SATU NEA had a sudden increase on 8th September 2005 mainly in ‘Y’ axis. These values remained high, fluctuating between 1 and 1.8 microrad until December 2005 when they came back to the values they used to be before the increase of September. The reason why there was higher noise in the data causing the jump in daily SATU average is not known.
- **Gradual increase on mid April 2006:** a different problem was present since mid April 2006 until October 2007. A gradual increase of the daily SATU ‘Y’ mean was observed. This increase was due to fluctuations of the SATU ‘Y’ data observed at the beginning of nominal occultations (starting at 130 km that corresponds to an elevation angle of around 65°). The decrease of the start elevation angle of the occultation has no impact on the amplitude of the SATU ‘Y’ fluctuations. Investigations carried out by the ESL, ESA and industry pointed to a problem on the SFM (mechanical or electrical) and not to a problem on the SATU itself. Since October 2007 the fluctuations have disappeared and as a consequence the daily SATU ‘Y’ average has come back below the threshold set to 3 micro radians.
- **Sudden increase on December 2008:** similarly to the anomaly happened on April 2006, the SATU NEA had an increase on 29th December 2008 due to fluctuations of the SATU ‘Y’ data.

The difference with respect to the previous anomaly is that this time, the increase was quite sudden and the fluctuations are present during the whole occultation, not only at the beginning of the occultation. The most critical effect of this anomaly is the loss of the star measurement high in the atmosphere, which means that many times the corresponding ozone profiles do not include the ozone peak present at around 25-30 km. After the increase of the elevation filter from 100 to 150 on 29th June 2009, the abortion of the star measurements was deeper in the atmosphere but still premature. Several configurations of the filter gain (tracking and rallying ones) were tested and after some reset/restart of the instrument, GOMOS was measuring nominally since 29th October 2009 with the “soft” patch uploaded (which represents an increase of the elevation tracking filter gain for low frequencies). The rallying gain has been changed several times and since 12th February 2010 it is set to 3.8.

The results for some occultations belonging to previous months (monthly averages) are presented in Figure 4.6-2, where the change in trend in September 2005, May 2006 and December 2008, mainly for the ‘Y’ axis is visible.

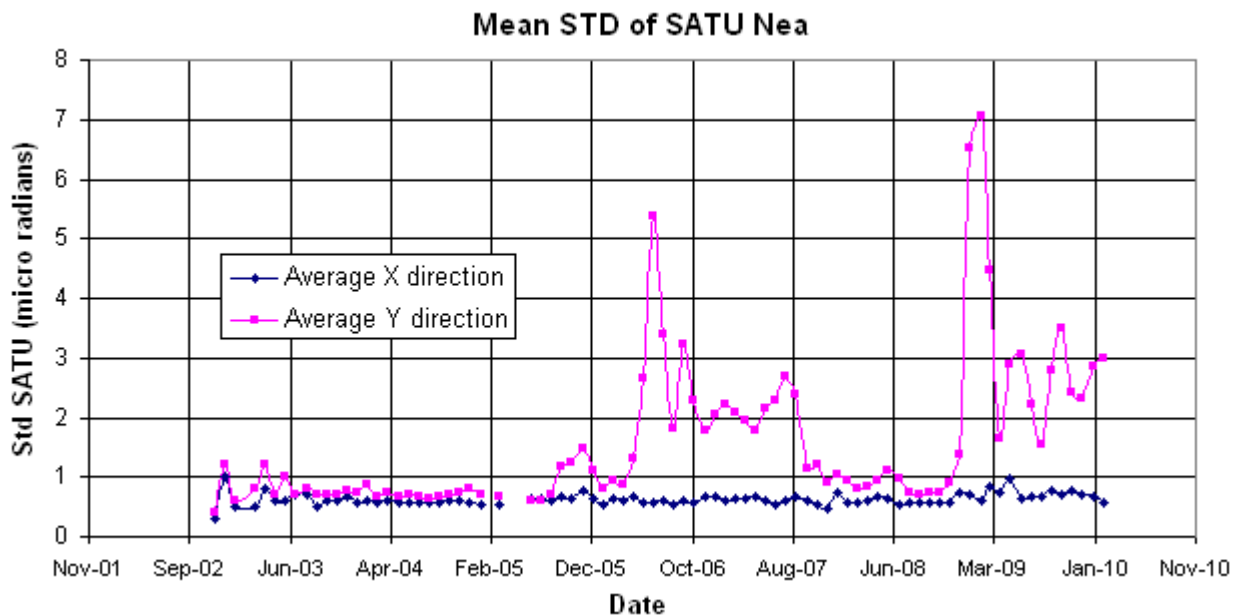


Figure 4.6-2: Average value per month of SATU NEA STD above 105 km

4.6.2 TRACKING LOSS INFORMATION

This verification consists of the monitoring of the tangent altitude at which the star is lost. It is an indicator of the pointing performance although it is to be considered that star tracking is also lost due to the presence of clouds and hence not only due to deficiencies in the pointing performance. Therefore, only the detection of any systematic long-term trend is the main purpose of this monitoring. The recent results are presented in Figure 4.6-3 and Figure 4.6-4:

- The dependence of the altitude at which tracking is lost on the magnitude of the star is very small because the tracking is mainly lost due to the refraction and the scintillation that depend on the atmospheric conditions.
- After restart on 29th October 2009, the altitude at which the stars are lost in dark limb is nominal, at around 17 km (Figure 4.6-3). The azimuth of some stars could be very near to the reduced instrument azimuth edges and therefore there could be occultations planned to have a duration

very small (2, 6, 10...seconds). To avoid planning this kind of useless occultation, it has been decided to set the minimum occultation duration value to 25 seconds. Figure 4.6-3 shows stars lost at altitudes higher than 20 km which corresponds with durations around 25-30 seconds

- In bright limb it is not expected that the stars are lost at very low altitudes due to the amount of light arriving to the pointing system mainly when the refraction effects start to be important. We see from Figure 4.6-4 that there are some stars lost at altitudes around 4 km. This occurs when the pointing system is not able to point to the star anymore but, instead of finishing the occultation, it continues to track light until the planned duration is reached.
- Daily statistics are given in Figure 4.6-5 (calculated using all ESRIN products since August 2009). The high peaks in standard deviation before 25th January 2005 are due to the long lasting occultations or partial occultations (the entire occultation is included within the following orbit data). The ones during June/July/August 2005 are due to the tests performed for anomaly investigation. On 2009 the peaks are due to the elevation anomaly.
- Monthly statistics are given in Figure 4.6-6 (calculated using all ESRIN products since August 2009) where the change in trend is visible for the period of GOMOS elevation anomaly on 2009.

Tangent altitude at which the star is lost

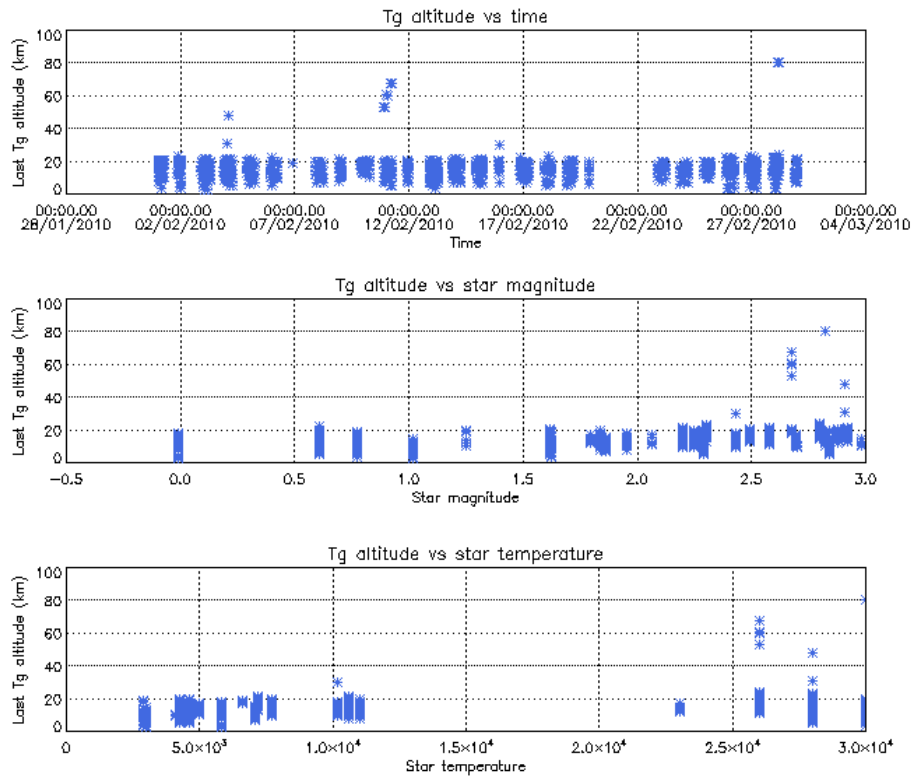


Figure 4.6-3: Last tangent altitude of the occultation (dark limb), point at which the star is lost

Tangent altitude at which the star is lost

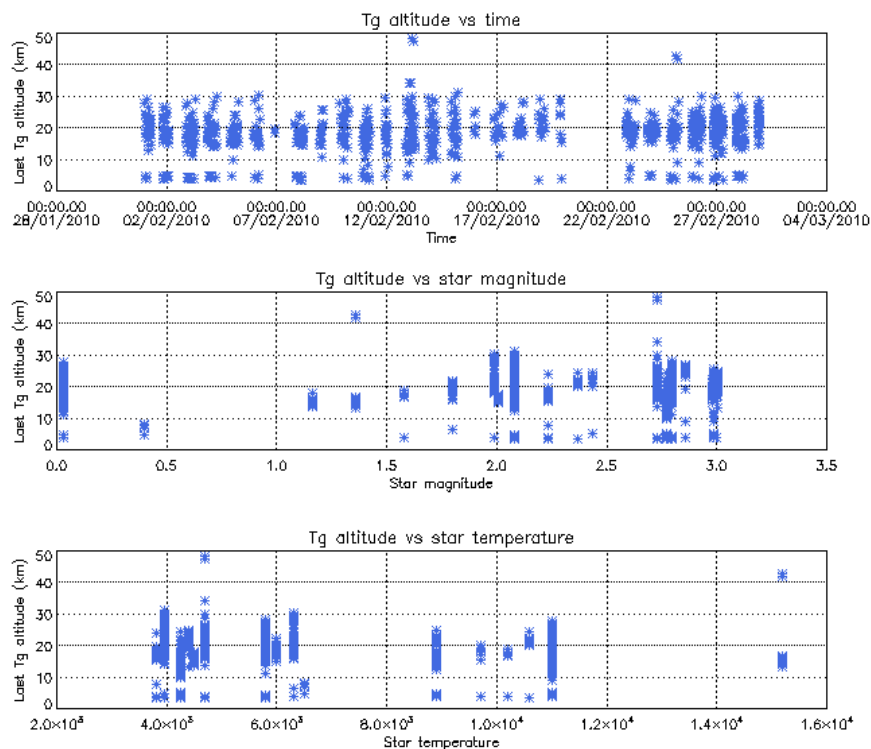


Figure 4.6-4: Last tangent altitude of the occultation (bright limb), point at which the star is lost

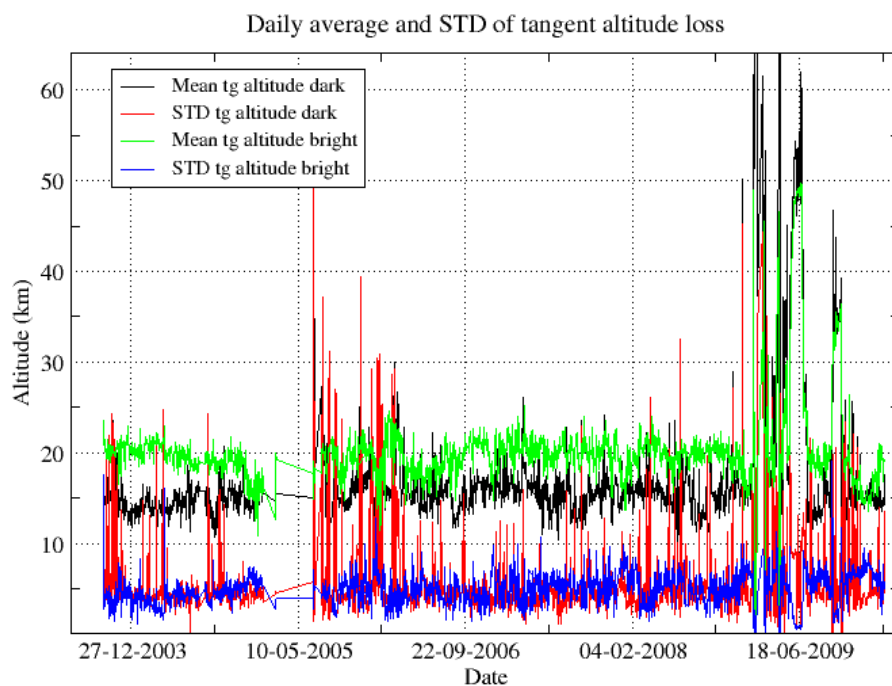


Figure 4.6-5: Daily average and STD of tangent altitude loss for the reporting period

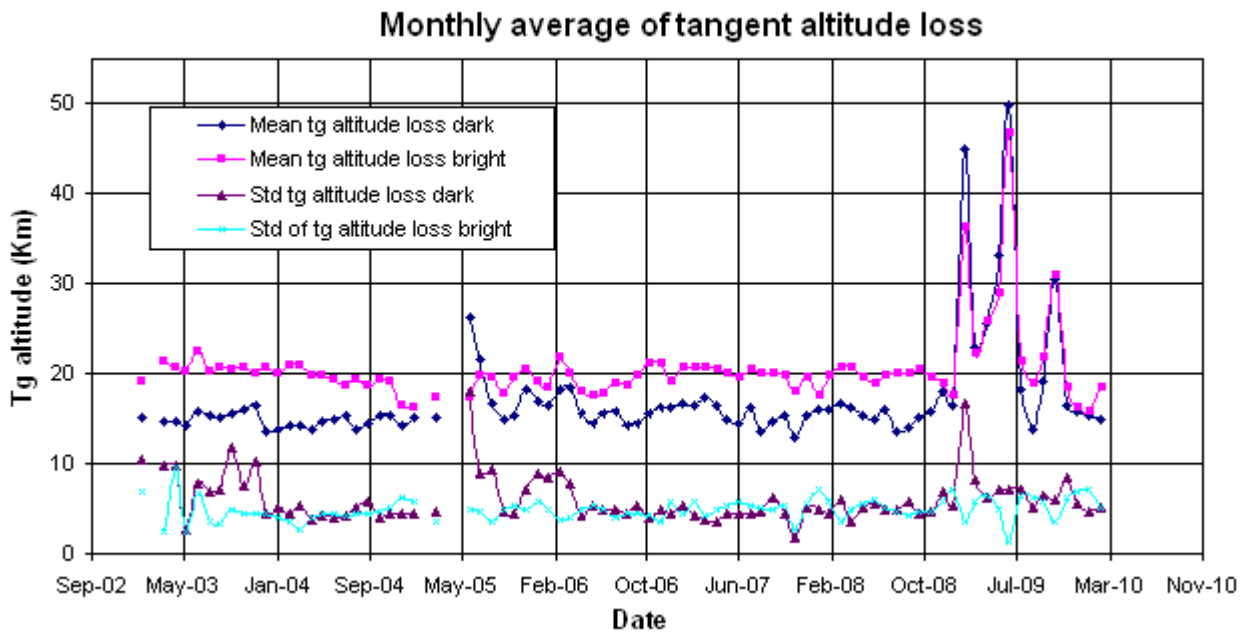


Figure 4.6-6: Monthly mean tangent altitude (and STD) at which the star is lost since January 2003

4.6.3 MOST ILLUMINATED PIXEL (MIP)

The MIP (Most Illuminated Pixel) is the star position on the SATU CCD in detection mode and it is recorded in the housekeeping data. The nominal centre of the SATU is pixel number **145** in elevation and number **205** in azimuth. The detection of the stars should not be far from this centre. As it can be seen in Figure 4.6-7 the **azimuth MIP** was within the threshold (Table 4.6-1) since September 2002 until the occurrence of the anomaly on January 2005, even if a small variation is present. The reason for the change in trend observed after the anomaly is, at the moment, not understood. The **elevation MIP** had a significant variation (see the *note* below) until 12th December 2003 when a new PSO algorithm was activated in order to reduce the deviations of the ENVISAT platform attitude with respect to the nominal one. Similarly to the azimuth, after the anomaly of January 2005 the Elevation MIP has a drift that has no explanation. Although this behavior of the MIP does not impact the data quality or the star location on the CCD array during the measurements, it may invalidate attitude monitoring by GOMOS and could represent a hidden anomaly.

Note: A MIP variation onto the SATU CCD of 50 pixels corresponds to a de-pointing of 0.1 degrees

Table 4.6-1: MIP Thresholds

MIP X	Mean delta Az	[198 - 210]
	Std delta Az	7
MIP Y	Mean delta El	[140 - 150]
	Std delta El	4

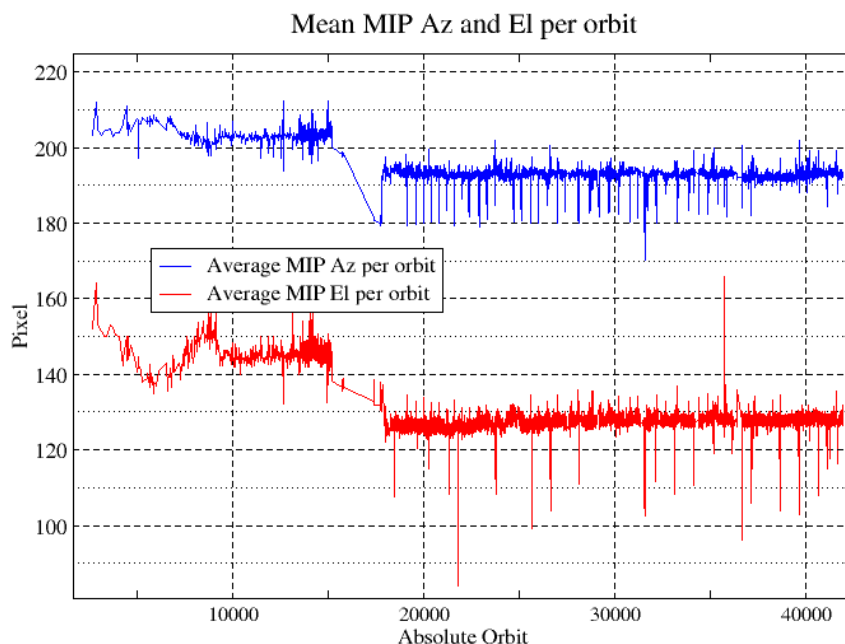


Figure 4.6-7: Mean values of MIP for some orbits since 1st September 2002 (see table 4.6-1)

Figure 4.6-8 shows the standard deviation of azimuth and elevation MIP that should be within the thresholds of Table 4.6-1. The peaks observed mean that one (or more) stars were detected very far from the SATU detection point and, in this case, the stars were lost during the centering phase (see section 0 for stars lost in centering).

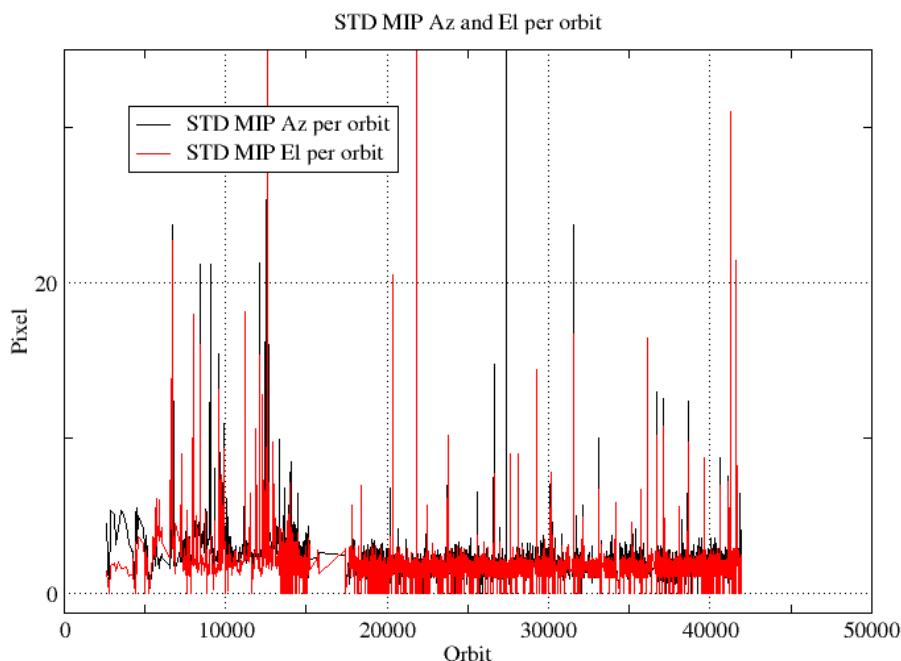


Figure 4.6-8: Standard deviation of MIP Azimuth and Elevation for some orbits since 1st September 2002 until end of reporting period (see table 4.6-1)

5 LEVEL 1 PRODUCT QUALITY MONITORING

5.1 Processor Configuration

5.1.1 VERSION

Around 41% of near real time GOM_TRA_1P products have been received by the IDEAS team for routine quality control and long term trend quality monitoring. The current level 1-processor software version for the operational ground segment is GOMOS/5.00 since 8th August 2006 (see Table 5.1-1). On **19th November 2009** the processor was switched from **GOMOS/5.00L03** (running of Linux OS) to **GOMOS/5.00L04** (running of Linux OS). This last version corrects a problem that the version GOMOS/5.00L03 had when processing at LRAC. They both are **equivalent to GOMOS/5.00 (AIX until 29th September 2009)**. The product specification is PO-RS-MDA-GS2009_10_3I. This processor has been cleared for level 1 data release, with a disclaimer for known artefacts (<http://envisat.esa.int/dataproducts/availability/disclaimers>) that are currently being resolved and will be implemented in following releases of the processor (<http://envisat.esa.int/dataproducts/availability>).

Users are also supplied with 2002 - 4th July 2006 data sets reprocessed by the last prototype processor GOPR_6.0c_6.0f developed and operated by ACRI. See Table 5.1-2 for prototype level 1b versions and modifications. The current GOMOS operational ground segment version GOMOS/5.00L04 is in line with the prototype version used for this second reprocessing.

Table 5.1-1: PDS level 1b product version and main modifications implemented

Data date	Version	Description of changes
19-NOV-2009	Level 1b version 5.00L04 at PDHS-E and PDHS-K (equivalent to GOMOS/5.00 but running in Linux OS)	Identical to version GOMOS/5.00
29-SEP-2009	Level 1b version 5.00L03 at PDHS-E and PDHS-K (equivalent to GOMOS/5.00 but running in Linux OS)	Identical to previous. LRAC could not switch to this version as a problem was preventing from processing some Level 0 data. A New version that corrects this problem was put in operations on 19 th November 2009
08-AUG-2006	Level 1b version 5.00 at PDHS-E, PDHS-K	Algorithm baseline level 1b DPM 6.3 <ul style="list-style-type: none"> • Correction of FP unfolding algorithm • Background correction of SPB in full dark limb • Modification of the computation of the incidence angle • Correction of the flat-field correction equations • Star spectrum location on CCD modified for SPB • Provide SFA and SATU angles in degrees • Elevation angle dependency of the reflectivity LUT added in the algorithms • Ratio upper/star signal added (FLAGUC) • Add Dark Charge used for dark charge correction (per band) • Flag for illumination condition (PCDillum) • Minimum sample value for which the cosmic rays detection processing is applied (Crmin) is a function of gain index • Logic for computation of the flags attached to the reference

23-JUL-2006	Level 1b version 5.00 at LRAC	<ul style="list-style-type: none"> star spectrum (Fref) modified Add the computation of the sun direction in the inertial geocentric frame to be written in the level 1b and limb products. Spectrometer effective sampling time added Change in configuration at the time of switch over: <ul style="list-style-type: none"> Use of new reflectivity LUT (GOM_CAL_AX) New wavelength assignment for SPA1, A2, B1 (GOM_CAL_AX) Location of star spectrum projection on the CCD arrays (GOM_CAL_AX) Spatial PSF of SPB modified (GOM_INS_AX) Some universal constants (GOM_PR1_AX)
23-MAR-2004	Level 1b version 4.02 at PDHS-E and PDHS-K	Algorithm baseline level 1b DPM 6.0 <ul style="list-style-type: none"> Adding a new calibration parameters (these values are hard coded at the moment) Removal of redundancy chain from code Modifications in the processing to apply new configuration and calibration parameter New algorithm to determine between dark, twilight and bright limb and to handle data accordingly Added handling of source packages with invalid packet header Added enumerations for all configuration flags
31-MAY-2003	Level 1b version 4.00 at PDHS-E and PDHS-K	Algorithm baseline level 1b DPM 5.4: <ul style="list-style-type: none"> Modulation correction step added after the cosmic rays detection processing Inversion of the non-linearity and offset corrections Modification of the computation of the estimated background signal measured by the photometers: use the spectrometer radiometric sensitivity curve and the photometer transfer function. Use of the dark charge map at orbit level computed from the DSA (dark sky area) if any in the level 0 product Implementation of a new unfolding algorithm for the photometer samples
21-NOV-2002	Level 1b version 3.61 at PDHS-E and PDHS-K	Algorithm baseline DPM 5.3: <ul style="list-style-type: none"> Review of some default values New definition of one PCD flag (atmosphere) Temporal interpolation of ECMWF data

Table 5.1-2: GOPR level 1b product version and main modifications implemented

Date	Version	Description of changes
22-JUL-2005	GOPR_6.0c	Level 1b: <ul style="list-style-type: none"> Correction of FP unfolding algorithm Background correction of SPB in full dark limb Modification of the computation of the incidence angle Correction of the flat-field correction equations Star spectrum location on CCD modified for SPB Configuration for second reprocessing: <ul style="list-style-type: none"> Use of new reflectivity LUT New wavelength assignment for SPA1, A2, B1 Spatial PSF of SPB modified
17-MAR-2004	GOPR 6.0a	<ul style="list-style-type: none"> Provide SFA and SATU angles in degrees Elevation angle dependency of the reflectivity LUT added in the algorithms Ratio upper/star signal added (FLAGUC)

		<ul style="list-style-type: none"> • Add Dark Charge used for dark charge correction (per band) • Flag for illumination condition (PCDillum) • Minimum sample value for which the cosmic rays detection processing is applied (Crmin) is a function of gain index • Logic for computation of the flags attached to the reference star spectrum (Flref) modified • Add the computation of the sun direction in the inertial geocentric frame to be written in the level 1b and limb products. • Spectrometer effective sampling time added
25-JUL-2003	GOPR 5.4f	<ul style="list-style-type: none"> • The demodulation process is applied only in full dark limb and twilight limb conditions.
17-JUL-2003	GOPR 5.4e	<ul style="list-style-type: none"> • Sun zenith angle is computed in the geolocation process. The occultation is now classified into (0) full dark limb condition, (1) bright limb condition and (2) twilight limb condition. • No background correction applied in full dark limb condition. The location of the image of the star spectrum on the CCD array is no more aligned with the CCD lines.
02-JUL2003	GOPR 5.4d	<ul style="list-style-type: none"> • The maximum number of measurements is set to 509 (instead of 510) in the GOPR prototype.
17-MAR-2003	GOPR 5.4c	<ul style="list-style-type: none"> • Modification of the CAL ADFs (update of the limb radiometric LUT). The products are affected only if the limb spectra are converted into physical units • Modifications to allow compatibility with ACRI computational cluster (no modifications of the results) • Modification of the logic to handle dark charge map refresh at orbit level (DSA data is now directly processed by the level 1b processor if available in the level 0 product). No impact on the results
21-FEB-2003	GOPR 5.4b	<ul style="list-style-type: none"> • DC map values are rounded when written in the level 1b product • Modification of the CAL ADFs (update of the wavelength assignment of SPB1 and SPB2) • Modify the computation of flag_mod in the modulation correction routine
17-JAN-2003	GOPR 5.4a	<ul style="list-style-type: none"> • use the start and stop dates of the occultation when calling the CFI Interpol instead of start and stop dates of the level 0 product • modify the ECMWF filename information in the SPH of the level 1b and limb products

5.1.2 AUXILIARY DATA FILES (ADF)

The ADF's files in Table 5.1-3, Table 5.1-4, Table 5.1-5, Table 5.1-6 and Table 5.1-7 have been disseminated to the PDS during the whole mission. Note that the files outlined in yellow are the set of auxiliary files used during the reporting period. For every type of file, the validity runs from the start validity time until the start validity time of the following one, but if an ADF file has been disseminated after the start validity time, it is obvious that it will be used by the PDHS-E and PDHS-K PDS only after the dissemination time (this happens the majority of the time). Just like the other ADF's, the calibration auxiliary file (GOM_CAL_AX) has been updated several times in the past (Table 5.1-7) but the difference is that now it is updated in a weekly basis with new DC maps and new wavelength assignment (routine weekly wavelength calibration was activated on 14th December 2007), and that is why the files used during reporting period are reported in a separate table (Table 5.1-8) that changes from report to report.

Table 5.1-3: Historic GOM_PR1_AX files used by PDS for level 1b products generation. The GOM_PR1_AX is a file containing the configuration parameters used for processing from level 0 to level 1b products

Used by PDS for Level 1b products generation during	GOM_PR1_AX (GOMOS processing level 1b configuration file)
01-MAR-2002 → 29-MAR-2002	GOM_PR1_AXVIEC20020121_165314_20020101_000000_20200101_000000 <ul style="list-style-type: none"> • Pre-launch configuration
30-MAR-2002 → 14-NOV-2002	GOM_PR1_AXVIEC20020329_115921_20020324_200000_20100101_000000 <ul style="list-style-type: none"> • Changed num_grid_upper, thr_conv and max_iter in the atmospheric GADS
Not used	GOM_PR1_AXVIEC20020729_083756_20020301_000000_20100101_000000 <ul style="list-style-type: none"> • Cosmic Ray mode + threshold • DC correction based on maps • Non-linearity correction disabled
Not used	GOM_PR1_AXVIEC20021112_170331_20020301_000000_20100101_000000 <ul style="list-style-type: none"> • Central background estimation by linear interpolation + associated thresholds
15-NOV-2002 → 26-MAR-2003	GOM_PR1_AXVIEC20021114_153119_20020324_000000_20100101_000000 <ul style="list-style-type: none"> • Same content as GOM_PR1_AXVIEC20021112_170331_20020301_000000_20100101_000000 but validity start updated so as to supersede according to the PDS file selection rules GOM_PR1_AXVIEC20020329_115921_20020324_200000_20100101_000000
27-MAR-2003 → 19-MAR-2004	GOM_PR1_AXVIEC20030326_085805_20020324_200000_20100101_000000 <ul style="list-style-type: none"> • Same content as GOM_PR1_AXVIEC20021112_170331_20020301_000000_20100101_000000 but validity start updated so as to supersede according to the PDS file selection rules GOM_PR1_AXVIEC20020329_115921_20020324_200000_20100101_000000
20-MAR-2004 → 22-MAR-2004	GOM_PR1_AXVIEC20040319_134932_20020324_200000_20100101_000000 <ul style="list-style-type: none"> • Ray tracing parameter changed: convergence criteria set to 0.1 microrad
23-MAR-2004 → 01-APR-2004 <i>Notes:</i> <ul style="list-style-type: none"> • This file was constructed from GOM_PR1_AXVIEC20030326_085805_20020324_200000_20100101_000000 (so without the ray tracing parameter changed) • This file was used by the GOMOS/4.02 processors before the IECF dissemination. The dissemination was done on 25th March 2004 	GOM_PR1_AXVIEC20040316_144850_20020324_200000_20100101_000000 GOM_PR1 ADF for version GOMOS/4.02, changes: <ul style="list-style-type: none"> • The central band estimation mode • Atmosphere thickness • Altitude discretisation
02-APR-2004 → 07-AUG-2006	GOM_PR1_AXVIEC20040401_083133_20020324_200000_20100101_000000 <ul style="list-style-type: none"> • Ray tracing parameter changed: convergence criteria set to 0.1 microrad
08-AUG-2006 Used at the time of switching over GOMOS/5.00	GOM_PR1_AXVIEC20050627_151042_20020301_000000_20100101_000000 <ul style="list-style-type: none"> • Change of some universal constants

Table 5.1-4: Historic GOM_INS_AX files used by PDS for level 1b products generation. The GOM_INS_AX is a file containing the characteristics of the instrument and it is used for processing from level 0 to level 1b products and from level 1b to level 2 products

Used by PDS for Level 1b products generation during	GOM_INS_AX (GOMOS instrument characteristics file)
01-MAR-2002 → 29-JUL-2002	GOM_INS_AXVIEC20020121_165107_20020101_000000_20200101_000000 <ul style="list-style-type: none"> • Pre-launch configuration
30-JUL-2002 → 12-NOV-2002	GOM_INS_AXVIEC20020729_083625_20020301_000000_20100101_000000 <ul style="list-style-type: none"> • Factors for the conversion of the SFA angles from SFM axes to GOMOS axes
13-NOV-2002 → 16-JUL-2003	GOM_INS_AXVIEC20021112_170146_20020301_000000_20100101_000000 <ul style="list-style-type: none"> • No more invalid spectral range
Not used	GOM_INS_AXVIEC20030716_080112_20030711_120000_20100101_000000 <ul style="list-style-type: none"> • New value for SFM elevation zero offset for redundant chain: 10004
17-JUL-2003 → 07-AUG-2006	GOM_INS_AXVIEC20030716_105425_20030716_120000_20100101_000000 <ul style="list-style-type: none"> • Bias induct azimuth redundant value set to -0.0084 rad (-0.4813 deg)
08-AUG-2006 → 11-NOV-1009	GOM_INS_AXNIEC20050627_150713_20030716_120000_20100101_000000 <ul style="list-style-type: none"> • The spatial PSF of SPB
12-NOV-2009	GOM_INS_AXVIEC20091111_143220_20030716_120000_20500101_000000 <ul style="list-style-type: none"> • Same content as previous one but with extended validity end time

Table 5.1-5: Historic GOM_CAT_AX files used by PDS for level 1b products generation. The GOM_CAT_AX is a file holding the star catalogue used for processing from level 0 to level 1b products

Used by PDS for Level 1b products generation during	GOM_CAT_AX (GOMOS Stat Catalogue file)
01-MAR-2002	GOM_CAT_AXVIEC20020121_161009_20020101_000000_20200101_000000 <ul style="list-style-type: none"> • Pre-launch configuration

Table 5.1-6: Historic GOM_STS_AX files used by PDS for level 1b products generation. The GOM_STS_AX is a file containing star spectra used for processing from level 0 to level 1b products

Used by PDS for Level 1b products generation during	GOM_STS_AX (GOMOS Star Spectra file)
01-MAR-2002 → 07-AUG-2006	GOM_STS_AXVIEC20020121_165822_20020101_000000_20200101_000000 <ul style="list-style-type: none"> • Pre-launch configuration
08-AUG-2006 → 11-NOV-2009	GOM_STS_AXNIEC20040308_103538_20020101_160000_20100101_000000 <ul style="list-style-type: none"> • Wavelength assignment GADS has been suppressed from the product • Wavelength assignment vector has been added to the star spectrum
12-NOV-2009	GOM_STS_AXVIEC20091111_151504_20020101_160000_20500101_000000 <ul style="list-style-type: none"> • Same content as previous one but with extended validity end time

Table 5.1-7: Historic GOM_CAL_AX files used by PDS for level 1b products generation. The GOM_CAL_AX is a file containing the calibration parameters used for processing from level 0 to level 1b products

Used by PDS for Level 1b products generation during	GOM_CAL_AX (GOMOS Calibration file)
01-MAR-2002 → 29-JUL-2002	GOM_CAL_AXVIEC20020121_164808_20020101_000000_20200101_000000 <ul style="list-style-type: none"> • Pre-launch configuration
Not used	GOM_CAL_AXVIEC20020121_142519_20020101_000000_20200101_000000 <ul style="list-style-type: none"> • Pre-launch configuration
30-JUL-2002 → 12-NOV-2002	GOM_CAL_AXVIEC20020729_082426_20020717_193500_20100101_000000 <ul style="list-style-type: none"> • Band setting information • Wavelength assignment

	<ul style="list-style-type: none"> • Spectral dispersion LUT • ADC offset for Spectrometers • PRNU maps • Thermistor coding LUT • DC maps
Not used	<p>GOM_CAL_AXVIEC20021112_165603_20020914_000000_20100101_000000</p> <ul style="list-style-type: none"> • Band setting information • DC maps • PRNU maps • Wavelength assignment • Spectral dispersion LUT • Radiometric sensitivity LUT (star and limb) • SP-FP intercalibration LUT • Vignetting LUT • Reflectivity LUT • ADC offset
13-NOV-2002 → 30-JAN-2003	<p>GOM_CAL_AXVIEC20021112_165948_20021019_000000_20100101_000000</p> <ul style="list-style-type: none"> • Only DC maps updated
31-JAN-2003 → 11-APR-2003	<p>GOM_CAL_AXVIEC20030130_133032_20030101_000000_20100101_000000</p> <ul style="list-style-type: none"> • Only DC maps updated (using DSA of orbit 04541)
12-APR-2003 → 02-JUN-2003	<p>GOM_CAL_AXVIEC20030411_065739_20030407_000000_20100101_000000</p> <ul style="list-style-type: none"> • Modification of the radiometric sensitivity curve for the limb spectra. Note that the modification of this LUT has no impact on the GOMOS processing. The LUT is just copied into the level 1b limb product for user conversion purpose. • Updated DC map only (using DSA of orbit 05762).
03-JUN-2003: from this date onwards, mainly updates to DC maps are done. Every month, the table of new GOM_CAL files with only DC maps updated is provided (table 5.1-8). Eventual changes to this file not corresponding only to DC maps updates will be reported in this table.	<p>GOM_CAL_AXVIEC20030602_094748_20030531_000000_20100101_000000</p> <ul style="list-style-type: none"> • Updated DC maps only (using DSA of orbit 06530)
13-FEB-2004 → 23-FEB-2004	<p>GOM_CAL_AXVIEC20040212_103916_20040209_000000_20100101_000000</p> <ul style="list-style-type: none"> • Update of the reflectivity LUT • Updated DC maps (Orbit 10194, date 11-FEB-2004)
08-AUG-2006 Used at the time of switching over GOMOS/5.00	<p>GOM_CAL_AXNIEC20050704_110915_20050125_224800_20100101_000000</p> <ul style="list-style-type: none"> • Reflectivity LUT updated • Location of the star spectrum projection on the CCD arrays • Wavelength assignment of the spectra updated • The spatial LSF of SPB updated • Updated DC maps (orbit 15200, date 25 JAN 2005)

Table 5.1-8: Calibration ADF for reporting period. These files are updated (only with new DC maps and wavelength calibrated) in a 8-10 days basis

Used by PDS for Level 1b products generation during	GOM_CAL_AX (GOMOS Calibration file)
28-JAN-2010 → 02-FEB-2010	GOM_CAL_AXVIEC20100127_093029_20100125_000000_20500101_000000 (orbit 41347, date 25-JAN-2010)
03-FEB-2010 → 09-FEB-2010	GOM_CAL_AXVIEC20100202_143945_20100131_000000_20500101_000000 (orbit 41432, date 01-FEB-2010)
10-FEB-2010 → 16-FEB-2010	GOM_CAL_AXVIEC20100210_103840_20100209_000000_20500101_000000 (orbit 41549, date 09-FEB-2010)

17-FEB-2010 → 23-FEB-2010	GOM_CAL_AXVIEC20100216_142029_20100214_000000_20500101_000000 (orbit 41631, date 16-FEB-2010)
24-FEB-2010 → 02-MAR-2010	GOM_CAL_AXVIEC20100223_152102_20100221_000000_20500101_000000 (orbit 41736, date 22-FEB-2010)

5.2 *Quality Flags Monitoring*

In this section, the results of monitoring some Product Quality information stored in level 1b products that did not have a fatal error (MPH error flag not set) are discussed. The products with fatal errors were around 0.3% of the products received during the reporting month for the quality monitoring.

On the one hand, for every product we have information of the **number of measurements** where a given problem was detected (i.e. number of invalid measurements, number of measurements containing saturated samples, number of measurements with demodulation flag set...). On the other hand, there are **flags** that indicate problems within the product (i.e. flag set to one if the reference spectrum was computed from DB, flag set to zero if SATU data were not used...).

For the information on the number of measurements a plot of percentages with respect to time is provided in Figure 5.2-1. The most relevant part of this information is also plotted in a world map as a function of ENVISAT position: % of cosmic ray hits per profile, % of datation errors per profile, % of star falling outside the central band per profile and % of saturation errors per profile (Figure 5.2-2).

It can be seen from Figure 5.2-1 that the cosmic rays hits occurred several times for the 99% of the measurements of the products. Looking at Figure 5.2-2 it can be clearly observed that this high percentage occurred when the satellite crossed the South Atlantic Anomaly (SAA) zone. Also the percentage of saturation errors per profile shows an increase over the SAA zone.

Another observation from Figure 5.2-1 is that for several products, 30-35% of the measurements have the star signal falling outside the central band. In Figure 5.2-2 it is observed that this percentage occurred mainly during twilight/dark conditions (roughly ascending) while in bright conditions the percentage is around 10% (Figure 5.2-2). This is because during the night the stars are lost deeper within the atmosphere and the turbulence phenomena becomes more important, producing the star to be less 'focused' on the spectrometers central band. The other values (% of invalid measurements per product, % of measurements per product with datation errors...) are quite low.

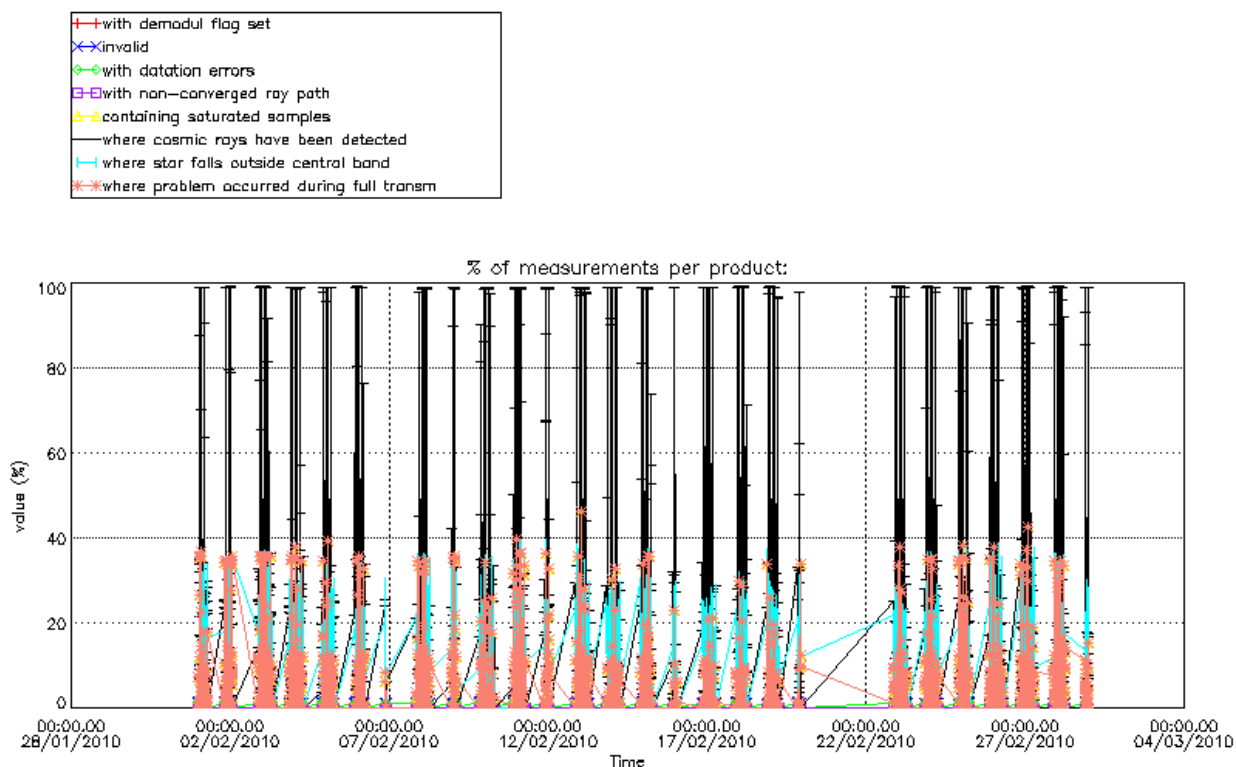


Figure 5.2-1: Level 1b product quality monitoring with respect to time

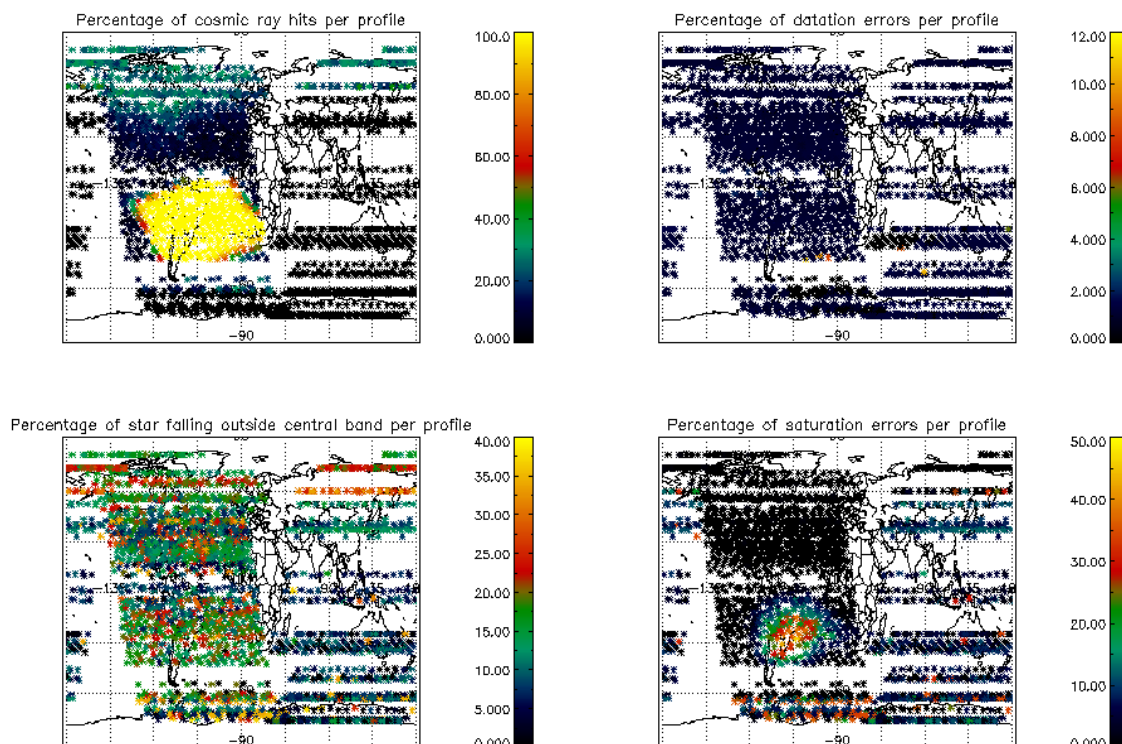


Figure 5.2-2: Level 1b product quality monitoring with respect to geolocation of ENVISAT

The QWG has requested to perform a different plot of the cosmic rays in order to have a clear picture on the geographical position of the hits: count the cosmic rays detected in every product and when they are more than 100 then consider that cosmic rays have been detected. This plot is in Figure 5.2-3. The products in bright limb have not been considered because the cosmic rays detection is not activated when processing products in bright.

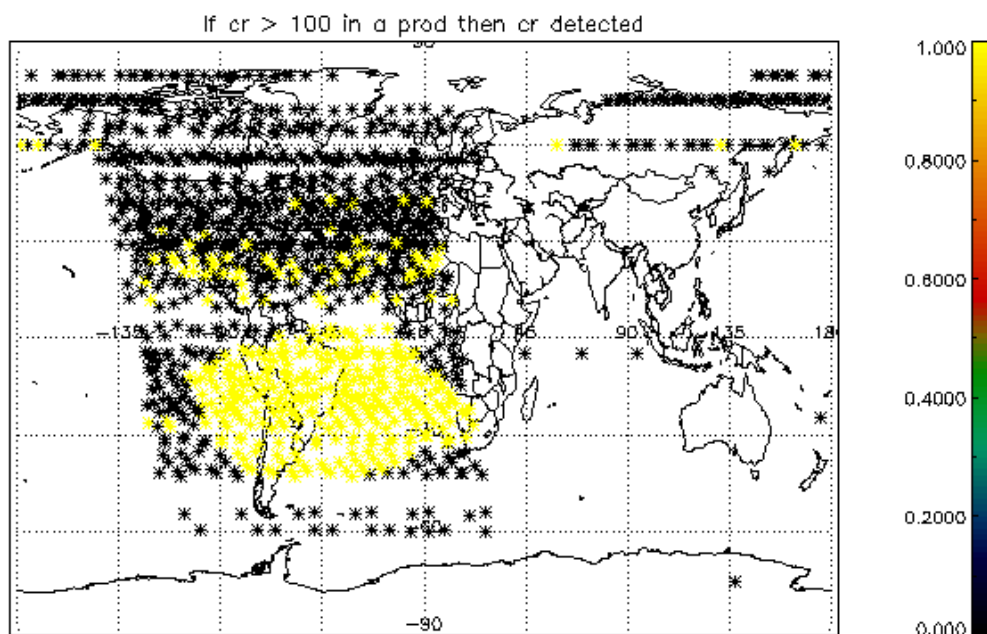


Figure 5.2-3: Count every time a cosmic ray has been detected. When it is > 100, then cosmic rays detected (yellow in the plot)

The flag information is given in table Table 5.2-1. The percentage of the products that have at least one measurement with demodulation flag set is also reported.

Table 5.2-1: Percentage of products during the reporting period with:

At least one measurement with demodulation flag set:	39 %
Reference spectrum computed from DB:	0.0 %
Reference spectrum with small number of measurements:	0.0 %
SATU data not used:	0.0 %

5.2.1 QUALITY FLAGS MONITORING (EXTRACTED FROM LEVEL 2 PRODUCTS)

In this section, the Product Quality information coming from the level 1 processing that is also stored in the level 2 products is plotted. Only products that did not have a fatal error (MPH error flag not set) are considered. The purpose of using the level 2 data is simply that the percentage of level 2 products arriving to the IDEAS team for the quality monitoring is much higher. For the reporting month, 100% of the archived products have been received. The plots are very similar to Figure 5.2-1 and Figure 5.2-2 (demodulation flag information is not included) but separating ascending from descending passes. Since

new version of the processor (GOMOS/5.00) there is no correspondence between illumination condition and latitude range when separating the passages (ascending and descending). Now, in the geo-location process, the sun zenith angle is computed and the occultation is then flagged accordingly (dark, bright, twilight, straylight, twilight+straylight). You can see in Figure 5.2-4 the location of the occultations and their limb for the reporting month.

Figure 5.2-5 and 5.2-5 Figure 5.2-6 present some quality information as a function of the time whereas in Figure 5.2-7 and Figure 5.2-8 the plot is respect to the satellite position at the beginning of the occultations.

The percentage of measurements “where a problem occurred during the full transmission” per product ranges between 2 and 30 % (Figure 5.2-5, Figure 5.2-6). The high values are due to the saturation that occurs mainly in bright limb. In dark limb the saturation occurs over the SAA zone but it is quite low elsewhere. From Figure 5.2-5 and Figure 5.2-6 you can see also that there are a variable percentage of the measurements that have the star signal falling outside the central band. This is because in dark the stars are lost deeper within the atmosphere and the turbulence phenomena become more important, resulting in the star being less ‘focused’ on the spectrometers central band.

In ascending (Figure 5.2-7) the SAA is perfectly localized by the high percentage of cosmic ray hits per product (upper left panel). It is not the same if we look at Figure 5.2-8, because in descending most of the occultations in that world region are in bright limb conditions and the cosmic rays detection processing is not activated.

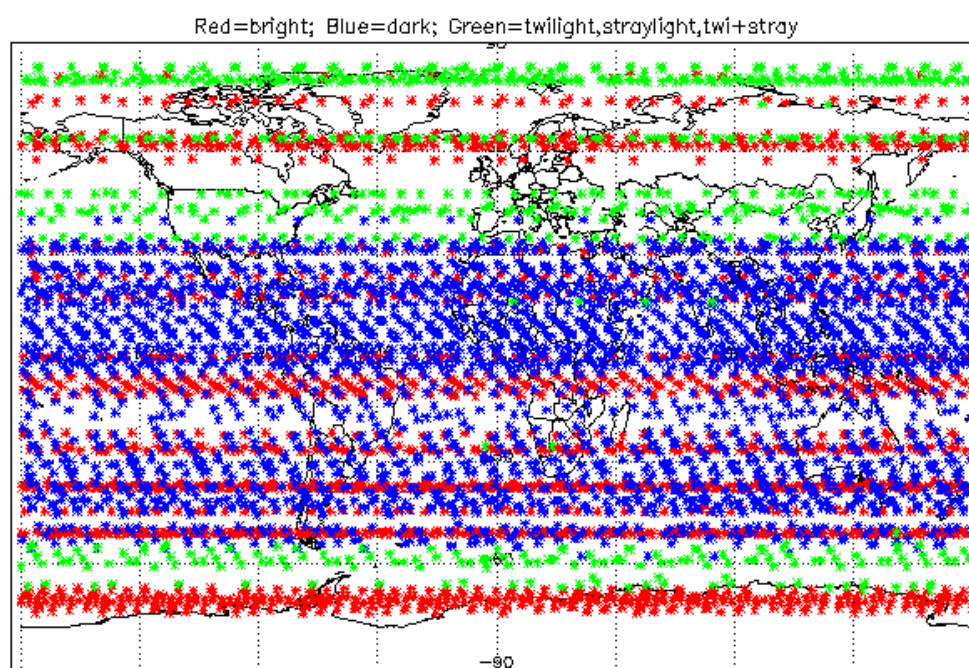


Figure 5.2-4: Position of the occultations based on illumination conditions

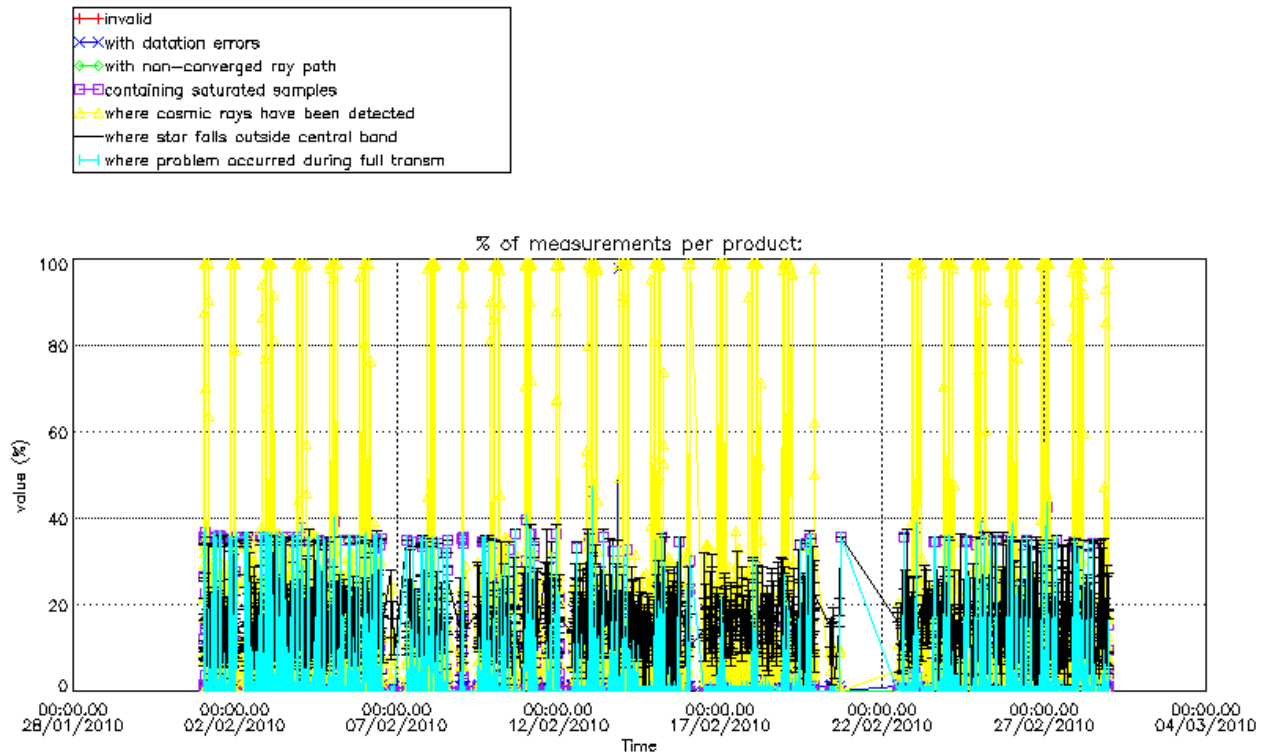


Figure 5.2-5: Level 1b product quality monitoring with respect to time ASCENDING ENVISAT passes

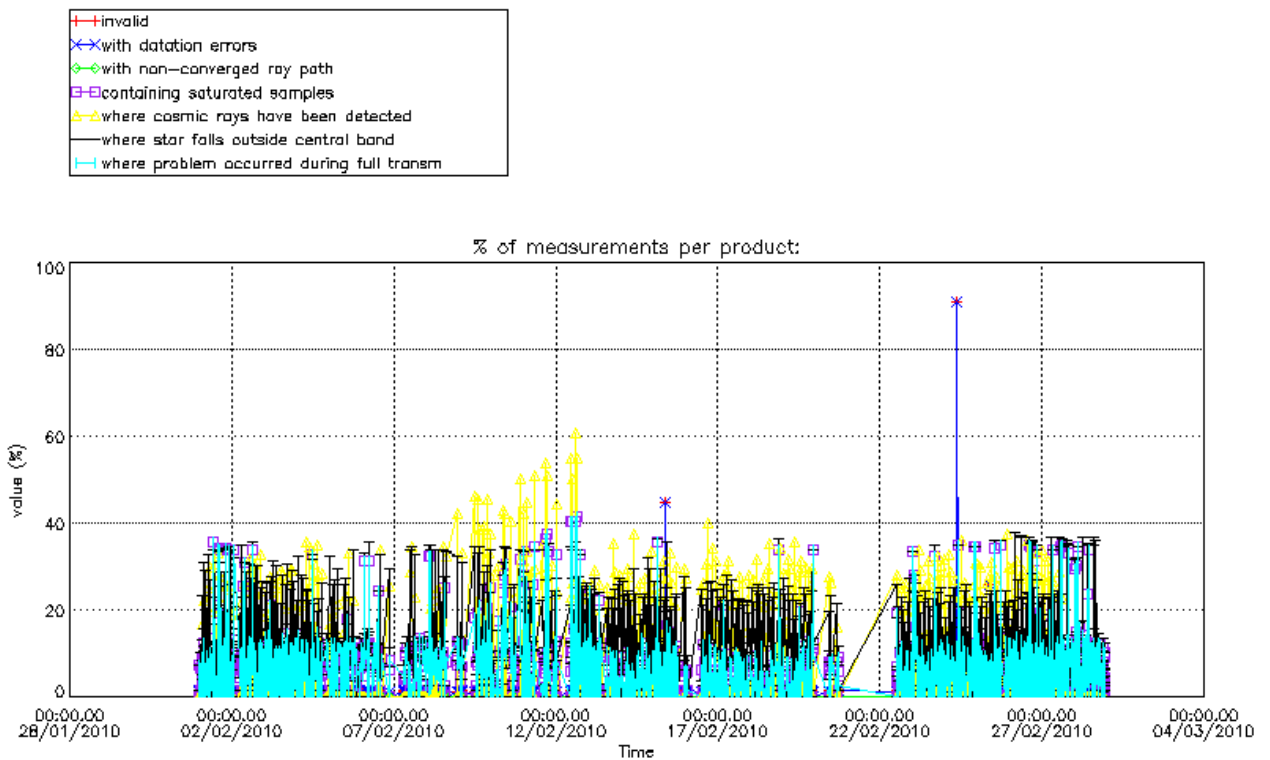


Figure 5.2-6: Level 1b product quality monitoring with respect to time DESCENDING ENVISAT passes

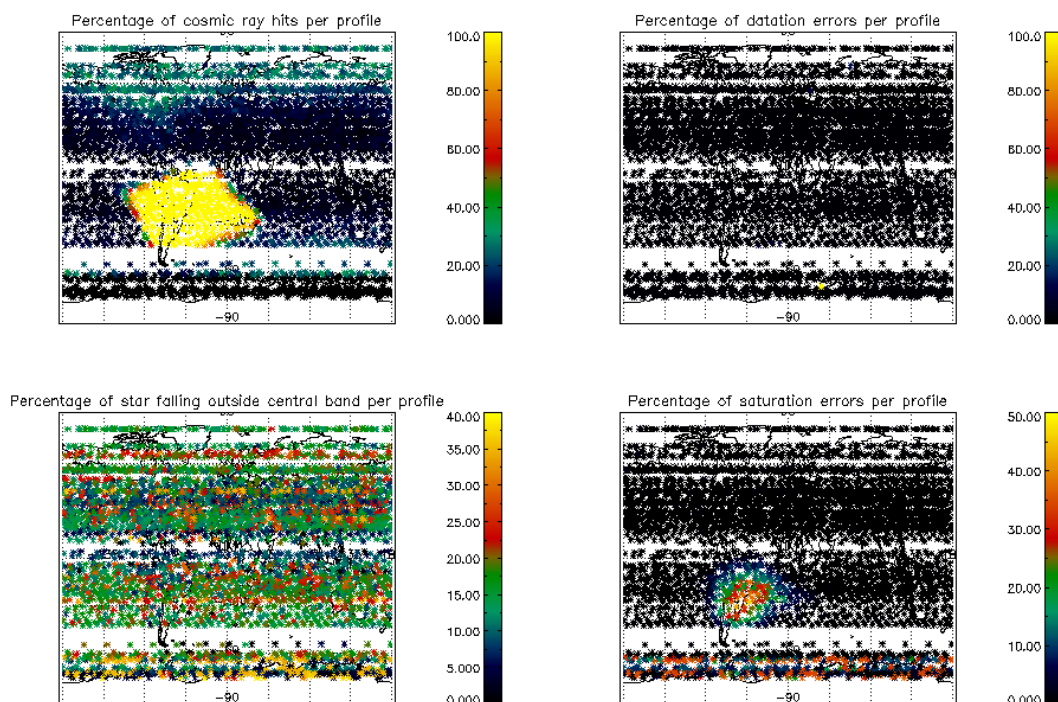


Figure 5.2-7: Level 1b product quality monitoring with respect to satellite geo-location for ASCENDING ENVISAT passes

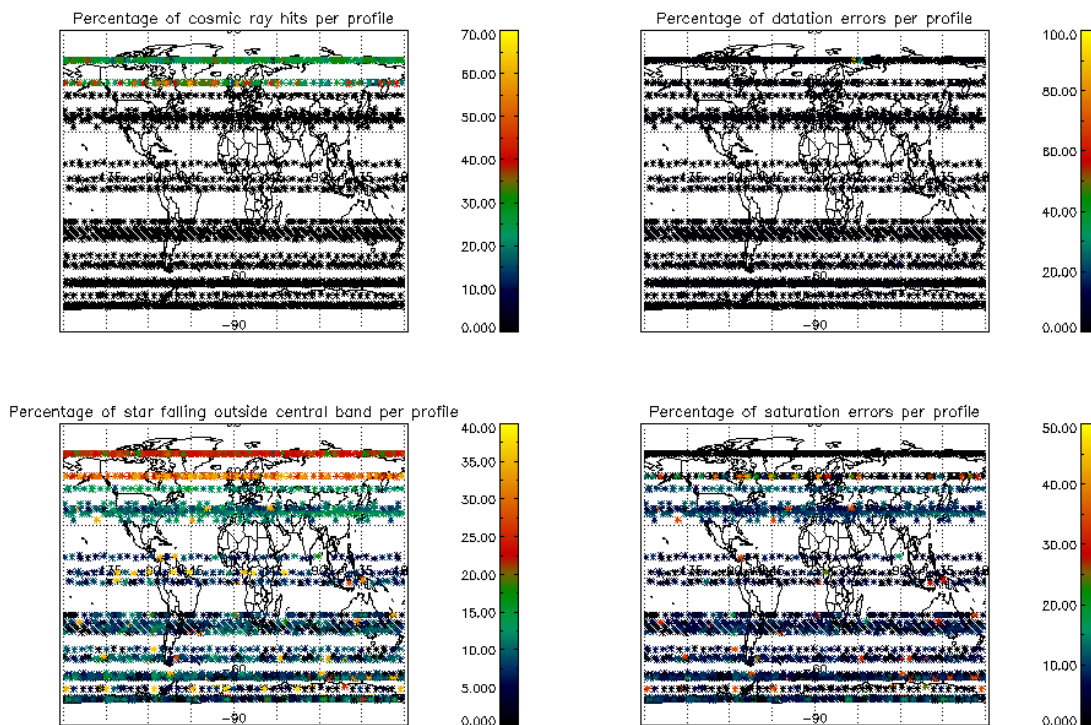


Figure 5.2-8: Level 1b product quality monitoring with respect to satellite geo-location for DESCENDING ENVISAT passes

5.3 Spectral Performance

No new data was available during the reporting month for updating the wavelength plot.

Every pixel of the spectrometers has a wavelength assigned. This assignment has been monitored through the mission by calculating, for given stars, the spectral shift corresponding to a maximum correlation between the reference star spectrum and the one of the occultation.

In order to have the wavelength well calibrated during the second reprocessing activity, the QWG performed a study to correct the spectral shift that was detected during the routine spectral performance monitoring (see Figure 5.3-1). A linear regression using data from stars 1 and 2 has been used to calibrate the wavelength for each needed orbit (one value for each calibration ADF used for the second reprocessing). This linear law took into account the ageing of the instrument. During the QWG #13, it has been decided to perform a wavelength calibration routinely with an extrapolation of this law and introducing also an extension to a second order law taking into account the seasonal variations. This routine calibration has been implemented on 14th December 2007 and is performed once a week at the same time of the DC maps calibration.

With this implementation the monitoring curve presented in Figure 5.3-1 should show small wavelength shifts since 14th December 2007. At least, the values should be smaller than the warning value set to 0.07 nm but, as it can be seen, the values have an unexpected variation (exceeding the threshold for given periods) that is currently being investigated by the QWG.

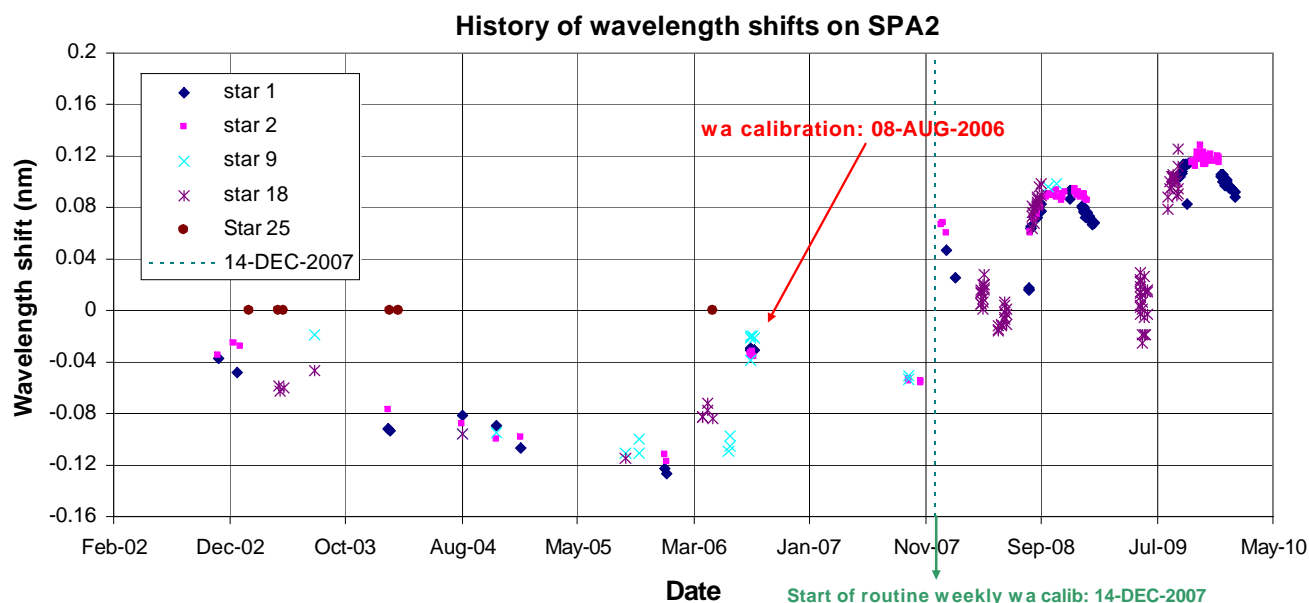


Figure 5.3-1: SPA2 wavelength monitoring since 12th November 2002: for every star ID (1, 2, 9, 18, 25) it is plotted the spectral shift for which a maximum correlation has been found between the reference spectrum and the one of the occultation

5.4 Radiometric Performance

5.4.1 RADIOMETRIC SENSITIVITY

The monitoring performed consists of the calculation of the radiometric sensitivity of each CCD by computing the ratio between parts of the reference spectrum using specific stars (Figure 5.4-1).

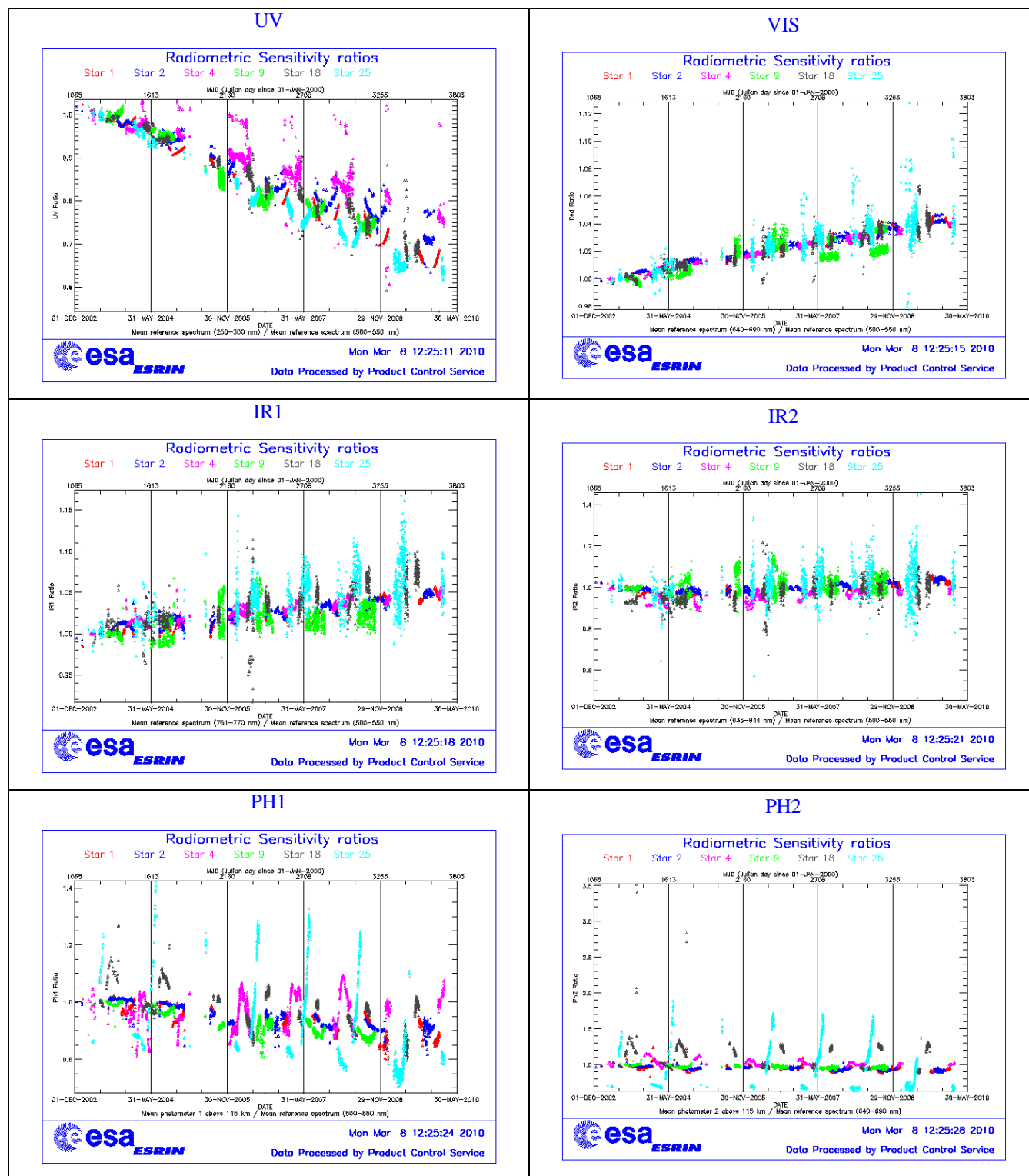


Figure 5.4-1: Radiometric sensitivity ratios since December 2002

The parts of the spectrum used are:

- UV: 250–300 nm
- Yellow: 500–550 nm
- Red: 640–690 nm
- Ir1: 761-770 nm
- Ir2: 935-944 nm

For the spectrometers the ratios are with respect to the ‘yellow’ spectral range. For the photometers, the ratios are calculated by dividing the mean photometer signal above the atmosphere (115 km) by the ‘yellow’ spectral range (for PH1) or by the ‘red’ spectral range (for PH2). The variation of the ratio should be within a given threshold which is set to 10% (see Table 5.4-1 that corresponds to Figure 5.4-1).

Table 5.4-1: Variation of RS for the different ratios (corresponds to fig. 5.4-1). Should be less than 10%

Star Id	% Variation of UV ratio	% Variation of Red ratio	% Variation of IR1 ratio	% Variation of IR2 ratio	% Variation of Ph1 ratio	% Variation of Ph2 ratio
1	7.7	1.6	0.7	0.3	11.8	30.2
2	1.9	2.0	0.9	0.4	9.9	12.7
4	1.0	2.8	1.7	1.3	8.1	23.5
9	22.2	1.4	0.8	0.6	11.1	9.2
18	6.3	2.6	1.6	1.8	14.8	300.0
25	53.2	4.1	1.9	1.7	28.1	147.4

For every star, this variation is calculated as the difference between the maximum (or minimum) ratio, and the mean over the 15 first values (if there were not 15 values computed yet, all values would be used).

For star 9 and 25 the UV ratio is greater than the threshold 10%. It is clear (Figure 5.4-1) that there is a global decrease of UV ratios for all the stars. This confirms the expected degradation suffered by the UV optics that is, anyway, very small considering also the small variation for the rest of the stars (Table 5.4-1).

By looking at the photometers radiometric sensitivity ratios of Figure 5.4-1, it can be seen that every star has a variation that seems to be annual. The variation is significant for stars 25 and 18. After some investigations performed by the QWG that exclude an inaccurate reflectivity correction LUT, it seems that the PH1/2 radiometric sensitivity variations could come from the fact that the spectrometers and the photometers are not illuminated the same way when the straylight appears (seasonal effect).

5.4.2 PIXEL RESPONSE NON UNIFORMITY

No new PRNU calibration has been performed during the reporting period. This means that the PRNU maps inside the ADF remain as they are without any change for the moment.

5.5 Other Calibration Results

Future reports will address other calibration results, when available.

6 LEVEL 2 PRODUCT QUALITY MONITORING

6.1 Processor Configuration

6.1.1 VERSION

Level 2 products from the operational ground segment have been disseminated during the reporting period to the users. 100% of GOM_NL__2P products have been received by the IDEAS team for routine quality control and long term trend monitoring. The current level 2-processor software version for the operational ground segment is GOMOS/5.00L04. On **19th November 2009** the processor was switched from **GOMOS/5.00L03** (running of Linux OS) to **GOMOS/5.00L04** (running of Linux OS). This last version corrects a problem that the version GOMOS/5.00L03 had when processing at LRAC. They both are **equivalent to GOMOS/5.00 (AIX until 29th September 2009)**. The product specification is PO-RS-MDA-GS2009_10_3I. Users are also supplied with 2002 - 4th July 2006 data sets reprocessed by the last prototype processor GOPR_6.0c_6.0f (developed and operated by ACRI) which is in line with the current GOMOS operational ground segment version GOMOS/5.00L04.

Table 6.1-1: PDS level 2 product version and main modifications implemented

Date	Version	Description of changes
19-NOV-2009	Level 2 version 5.00L04 at PDHS-E and PDHS-K (equivalent to GOMOS/5.00 but running in Linux OS)	Identical to version GOMOS/5.00
29-SEP-2009	Level 2 version 5.00L03 at PDHS-E and PDHS-K (equivalent to GOMOS/5.00 but running in Linux OS)	Identical to previous. LRAC could not switch to this version as a problem was preventing from processing some Level 0 data. A New version that corrects this problem was put in operations on 19th November 2009
08-AUG-2006	Level 2 version 5.00 at PDHS-E and PDHS-K	Algorithm baseline level 2 DPM 6.2: <ul style="list-style-type: none"> • The optimisation of the DOAS iterations • Negative column densities and local densities not flagged anymore • Suppress the setting of maximum error in case of negative local densities • Correction of HRTP discrepancies, and error estimates fixed • Rename Turbulence MDS into High Resolution Temperature MDS (HRTP) • Add vertical resolution per species in local densities MDS • Add Solar zenith angle at tangent point and at satellite level in geolocation ADS • Add "tangent point density from external

<p>23-JUL-2006</p>	<p>Level 2 version 5.00 at FinCoPAC</p>	<ul style="list-style-type: none"> • model" in geolocation ADS • Suppress contribution of "tangent point density from external model" in "local air density from GOMOS atmospheric profile" in geolocation ADS <p>Change in configuration at the time of the switch over:</p> <ul style="list-style-type: none"> ○ 2nd order polynomial for aerosol ○ Air fixed to ECMWF (local density set to 0 in the L2 products) ○ Orphal cross-sections for O₃ ○ GOMOS cross-sections for other species ○ Covariance matrix terms linked to air set to 0 ○ Air and NO₂ additional errors set to 0
<p>23-MAR-2003</p>	<p>Level 2 version 4.02 at PDHS-E and PDHS-K</p>	<p>Algorithm baseline level 2 DPM 5.5:</p> <p>Section 3</p> <ul style="list-style-type: none"> • Add references to technical notes on Tikhonov regularization • Change High level breakdown of modules: SMO/PFG • Change parameter: NFS in I2 ADF • Change parameter σ_G in I2 ADF (Table 3.4.1.1-II) • Change content of Level 2/res products – GAP • Change time sampling discretisation • Add covariance matrix explanation <p>Section 5</p> <ul style="list-style-type: none"> • Replace SMO by PFG VER-1/2: Depending on NFS, Apply either a Gaussian filter or a Tikhonov regularization to the vertical inversion matrix • Unit conversion applied on kernel matrix • Suppress VER-3 <p>Section 6</p> <ul style="list-style-type: none"> • GOMOS Atmospheric Profile (GAP): not used in this version • Time sampling in equation (6.5.3.7-73)
<p>31-MAY-2003</p>	<p>Level 2 version 4.00 at PDHS-E and PDHS-K</p>	<p>Algorithm baseline level 2 DPM 5.4:</p> <ul style="list-style-type: none"> • Revision of some default values • Add a new parameter • Transmission model computation: suppress tests on valid pixels and species • Apply a Gaussian filter to the vertical inversion matrix • Very low signal values are substituted by threshold value
<p>21-NOV-2002</p>	<p>Level 2 version 3.61 at PDHS-E and PDHS-K</p>	<p>Algorithm baseline level 2 DPM 5.3a:</p> <ul style="list-style-type: none"> • Revision of some default values • Wording of test T11 • Dilution term computation of jend • Covariance computation scaling applied before and after

Table 6.1-2: GOPR level 2 product version and main modifications implemented

Date	Version	Description of changes
14-OCT-2005	GOPR_6.0f	<ul style="list-style-type: none"> The optimisation of the DOAS iterations Negative column densities and local densities not flagged anymore Suppress the setting of maximum error in case of negative local densities Correction of H RTP discrepancies, and error estimates fixed Configuration for second reprocessing: <ul style="list-style-type: none"> 2nd order polynomial for aerosol Air fixed to ECMWF (local density set to 0 in the L2 products) Orphal cross-sections for O₃ GOMOS cross-sections for other species Covariance matrix terms linked to air set to 0 Air and NO₂ additional errors set to 0
17-MAR-2004	GOPR 6.0a	<ul style="list-style-type: none"> Rename Turbulence MDS into High Resolution Temperature MDS (H RTP) Add vertical resolution per species in local densities MDS Add Solar zenith angle at tangent point and at satellite level in geolocation ADS Add "tangent point density from external model" in geolocation ADS Suppress contribution of "tangent point density from external model" in "local air density from GOMOS atmospheric profile" in geolocation ADS
18-AUG-2003	GOPR 5.4d	<ul style="list-style-type: none"> Tikhonov regularisation is implemented
18-MAR-2003	GOPR 5.4b	<ul style="list-style-type: none"> Modification to implement the computation of Tmodel for spectrometer B (in version 5.4b, the Tmodel for SPB is still set to 1)
30-JAN-2003	GOPR 5.4a	<ul style="list-style-type: none"> Modifications for ACRI internal use only. No impact on level 2 products.

6.1.2 AUXILIARY DATA FILES (ADF)

The ADF’s files in Table 6.1-3 and Table 6.1-4 are used by the PDS to process the data from level 1 to level 2. For every type of file, the validity runs from the start validity time until the start validity time of the following one, but if an ADF file has been disseminated after the start validity time, it is obvious that it will be used by the PDHS-E and PDHS-K PDS only after the dissemination time (this happens the majority of the time). Note that the files outlined in yellow are the set of auxiliary files used during the reporting period.

Table 6.1-3: Historic GOM_PR2_AX files used by PDS for level 2 products generation. The GOM_PR2_AX is a file containing the configuration parameters used for processing from level 1b to level 2 products

Used by PDS for Level 2 products generation during	GOM_PR2_AX (GOMOS Processing level 2 configuration file)
01-MAR-2002 → 29-JUL-2002	GOM_PR2_AXVIEC20020121_165624_20020101_000000_20200101_000000 <ul style="list-style-type: none"> Pre-launch configuration
30-JUL-2002 → 02-SEP-2002	GOM_PR2_AXVIEC20020729_083851_20020301_000000_20100101_000000 <ul style="list-style-type: none"> Maximum value of chi2 before a warning flag is raised (set to 5) Maximum number of iterations for the main loop (set to 1)
03-SEP-2002 → 12-NOV-2003	GOM_PR2_AXVIEC20020902_151029_20020301_000000_20100101_000000 <ul style="list-style-type: none"> Maximum value of chi2 before a warning flag is raised (set to 100)

13-NOV-2003 → 22-MAR-2004	GOM_PR2_AXVIEC20021112_170458_20020301_000000_20100101_000000 <ul style="list-style-type: none"> • Smoothing mode • Hanning filter • Number of iterations • Spectral windows to suppress the O2 absorption in the high spectral range of SPA2
23-MAR-2004 <i>Note:</i> this file was used by the GOMOS/4.02 processors before the IECF dissemination. The dissemination was done on 25 th March 2004	GOM_PR2_AXVIEC20040316_145613_20020301_000000_20100101_000000 <ul style="list-style-type: none"> • Pressure at the top of the atmosphere • Number of GOMOS sources data (used in GAP) • Activation flag for GOMOS sources data (GAP) • Smoothing mode (after the spectral inversion) • Atmosphere thickness
08-AUG-2006 → 11-NOV-2009	GOM_PR2_AXNIEC20051021_081111_20020301_000000_20100101_000000 <ul style="list-style-type: none"> • Several level 2 processing configuration parameters
12-NOV-2009	GOM_PR2_AXVIEC20091111_152718_20020301_000000_20500101_000000 <ul style="list-style-type: none"> • Same content as the previous one but with extended validity end time

Table 6.1-4: Historic GOM_CRS_AX files used by PDS for level 2 products generation. The GOM_CRS_AX is a file containing the cross sections used for processing from level 1b to level 2 products

Used by PDS for Level 2 products generation during	GOM_CRS_AX (GOMOS Cross Sections file)
01-MAR-2002 → 08-MAR-2002	GOM_CRS_AXVIEC20020121_164026_20020101_000000_20200101_000000 <ul style="list-style-type: none"> • Pre-launch configuration
09-MAR-2003 → 29-JUL-2002	GOM_CRS_AXVIEC20020308_185417_20020101_000000_20200101_000000 <ul style="list-style-type: none"> • Corrected NUM_DSD in MPH - was 14 and is now 19 - and corrected spare DSD format by replacing last spare by carriage returns in file GOM_CRS_AXVIEC20020121_164026_20020101_000000_20200101_000000
30-JUL-2002 → 25-MAR-2004	GOM_CRS_AXVIEC20020729_082931_20020301_000000_20100101_000000 <ul style="list-style-type: none"> • O3 cross-sections summary description (SPA) • NO3 cross-sections summary description • O2 transmissions summary description • H2O transmissions summary description • O3 cross sections (SPA)
26-MAR-2004 <i>Note:</i> the file was disseminated on 27 Jan 2004 but could not be used by PDS until version GOMOS/4.02 was in operation	GOM_CRS_AXVIEC20040127_150241_20020301_000000_20100101_000000 <ul style="list-style-type: none"> • Update of the O2 and H2O transmissions (S.A input) • Extension by continuity of the O3 cross-section for SPB
08-AUG-2006 → 11-NOV-2009	GOM_CRS_AXNIEC20051021_080452_20020301_000000_20100101_000000 <ul style="list-style-type: none"> • Updated O₃ cross-sections
12-NOV-2009	GOM_CRS_AXVIEC20091111_154832_20020301_000000_20500101_000000 <ul style="list-style-type: none"> • Same content as the previous one but with extended validity end time

6.1.3 RE-PROCESSING STATUS

The improvement of the GOMOS processing chain is a continuous on-going activity, not only for the processing algorithm but also for the instrument characterization data. In order to provide the best quality products to the users and due to the normal delay between algorithm specification and implementation in the operational PDS, it was decided to reprocess the GOMOS data using the Gopr prototype.

The second reprocessing activity covering years 2002-2006 (until 4th July 2006) using the prototype GOPR_6.0c_6.0f is completed. All reprocessed data can be retrieved via web query from <http://www.enviport.org/gomos/index.jsp>. FTP access to bulk reprocessing results (one tar file of GOMOS products per day) is allowed from the D-PAC: <ftp://gomo2usr@ftp-ops.de.envisat.esa.int>.

6.2 Quality Flags Monitoring

In this section, some information contained in the Quality Summary data set of the level 2 products arrived during reporting period is shown. In particular, the percentage of flagged points per profile for the local species O₃, H₂O, NO₂ and NO₃ is depicted (Figure 6.2-1). Only products in dark limb illumination conditions and without fatal errors (error flag in the MPH set to "0") are used.

The flagging strategy for GOMOS version GOMOS/5.00L04 foresees that a profile point is flagged when:

- The local density is greater than a given maximum value
- The line density is not valid. And it occurs when:
 - The acquisition from level 1b is not valid
 - There is no acquisition used for reference star spectrum
 - The line density is greater than a given maximum value

Only for species: air, aerosol, O₃, NO₂, NO₃, OClO

- No convergence after a given number of LMA iterations
- χ^2 out of LMA is bigger than χ^2
- Failure of inversion

Only for species: O₂, H₂O

- Spectro B only: no convergence
- Spectro B only: data not available
- Spectro B only: covariance not available

There are points mainly between -55° and 55° latitude (Figure 6.2-1) because in this period of the year full dark illumination condition occultations (only those products have been used for these plots) are geo-located on that region. In summer, full dark illumination data are mainly in the Southern Hemisphere while in winter it is the contrary: full dark illumination occultations are found mainly in the Northern Hemisphere.

Looking at Figure 6.2-1, the most evident characteristic that can be observed is the high percentage of flagged points per profile for some H₂O profiles. Users should be careful in using these data as the quality is only guaranteed for few stars. As a consequence of the current flagging strategy the percentage of flagged points per profile for O₃, NO₂ and NO₃ is around 10-15%. It can be seen also that there are latitudinal bands with almost the same color (same percentages) mainly for H₂O. This means that the percentages of flagged points per profile have a dependence on the stars that have been observed: a given star is always observed at the same latitude but at different longitude.

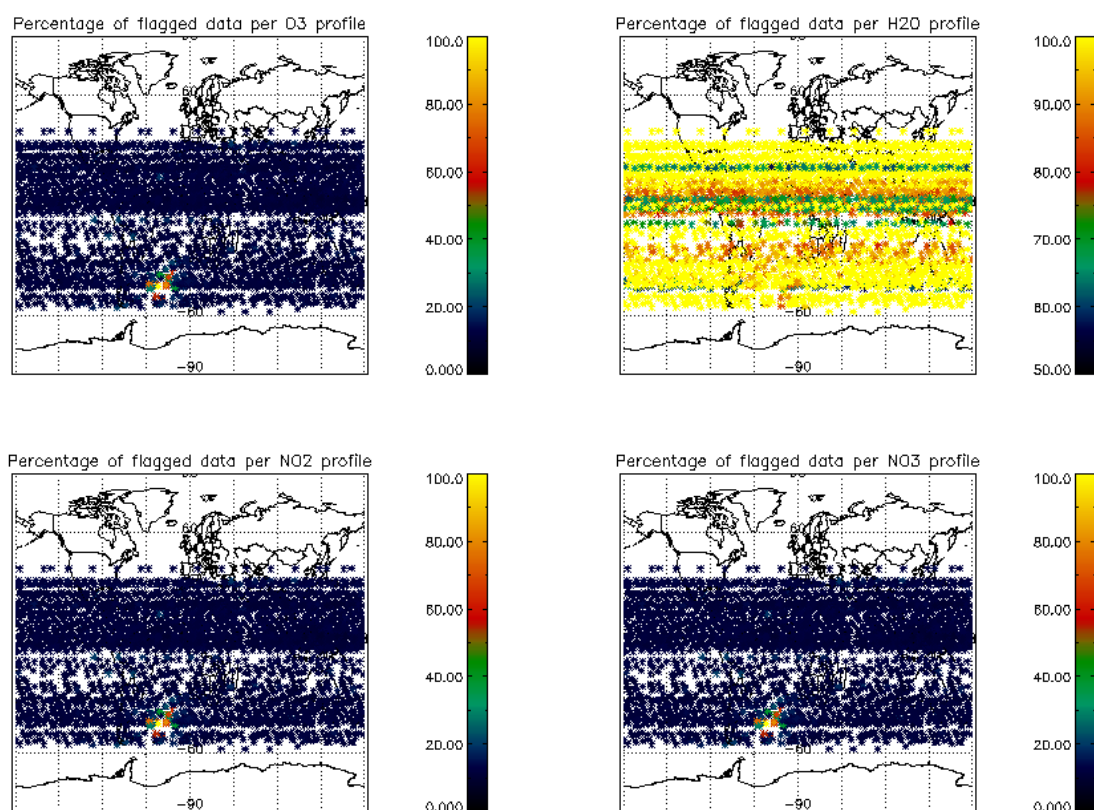


Figure 6.2-1: Percentage of flagged points per profile

6.3 Other Level 2 Performance Issues

6.3.1 MONTHLY OZONE AVERAGE

The plot presented in Figure 6.3-1 is the average of the Ozone values during the reporting month in a grid of 0.5 degrees in latitude per 1 km in altitude. Some known characteristics can be seen:

- O₃ concentrations show a decrease with latitude near 40 km altitude. In the lower latitudes O₃ is generated by photolysis of O₂
- In the middle stratosphere (25-30 km) O₃ is strongly influenced by transport effects. Strong meridional and zonal transport is visible in middle and higher latitudes
- The lower stratosphere shows an O₃ increase with latitude. Highest values can be found within higher latitude regions due to downward transport of rich air masses

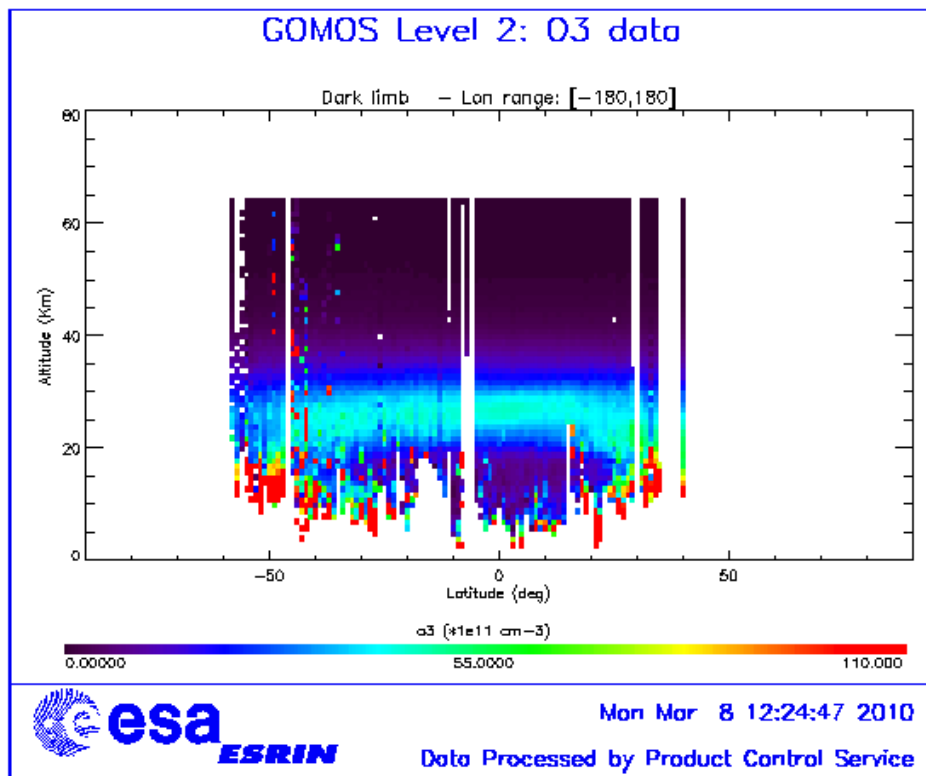


Figure 6.3-1: Average GOMOS O₃ profile during the reporting month: average in a grid of 0.5° latitude x 1 km altitude

6.3.2 OZONE DISPERSION MONITORING

This section is the output of a QWG request for the monitoring of the dispersion around the equator [-30°, 30°] using the brightest star of the day and with temperature greater or equal than 7000 k. This request includes the plot of daily median ozone, daily averaged χ^2 , daily averaged estimated errors and daily dispersion (defined as STD/Mean in %). The first step is the interpolation to given altitude layers (20, 25, 30, 40, 50, 60, 70, 80 and 90 km) and afterwards the daily average is performed. More than 5 profiles per day should be used for the average, if for a given day the number of profiles is less than 5 (for the brightest star) then the following star in increasing magnitude is chosen. The data above the SAA have not been used because those data produce unwanted fluctuations in the monitoring curves. The numbers below the lower curve are the star ID of the stars used for the statistics whilst the numbers above the upper curve are the number of profiles used.

Figure 6.3-2 shows the daily ozone median for the reporting month. The daily averaged χ^2 is shown in Figure 6.3-3 while Figure 6.3-4 and Figure 6.3-5 show the daily average of estimated errors and the dispersion, respectively. The plots show the usual behavior.

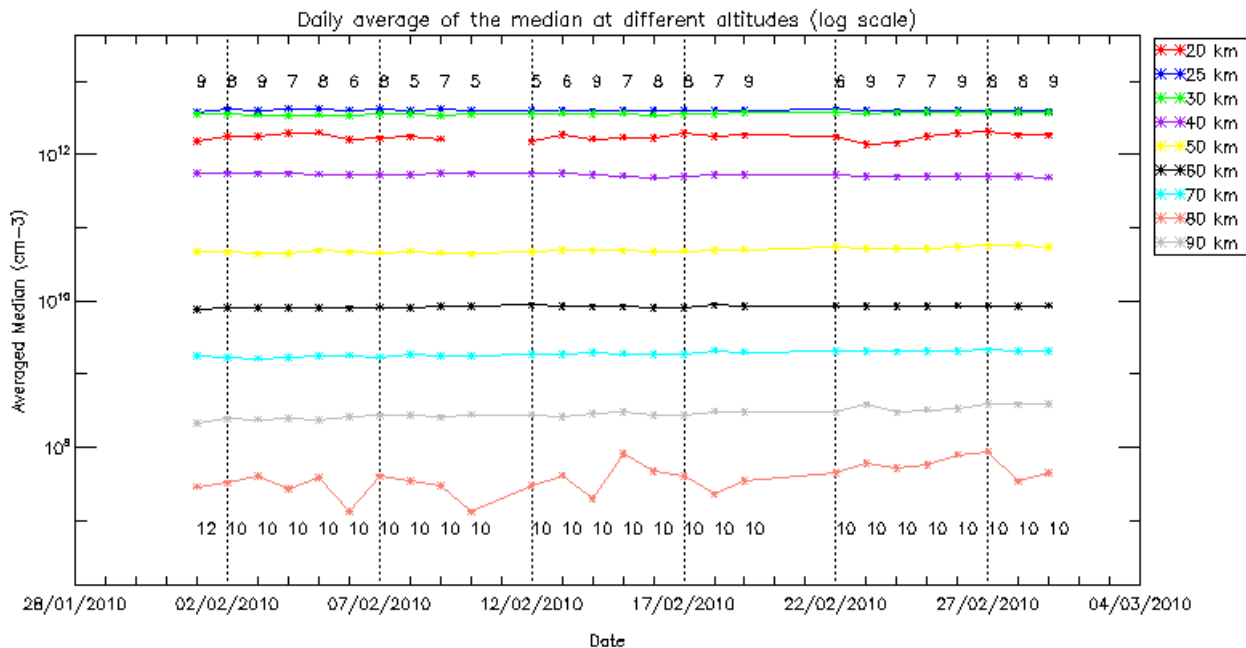


Figure 6.3-2: Daily ozone median at different altitude layers for the reporting month

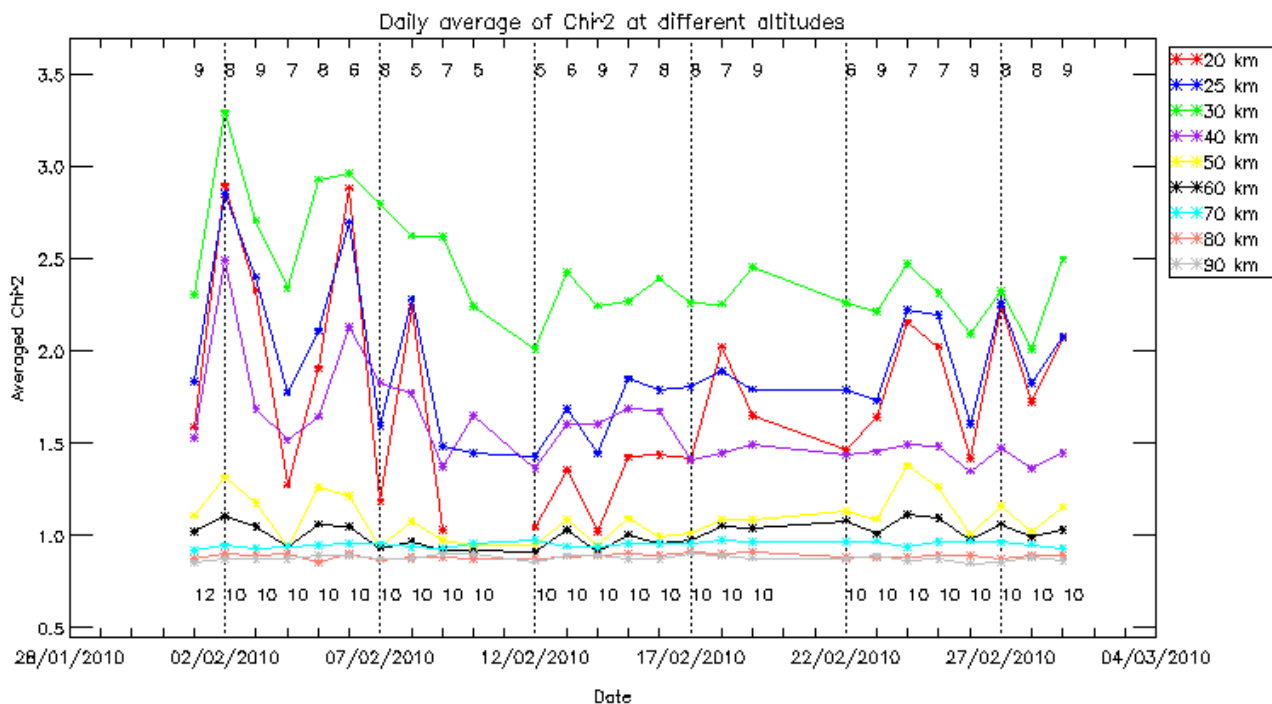


Figure 6.3-3: Daily chi2 average at different altitude layers for the reporting month

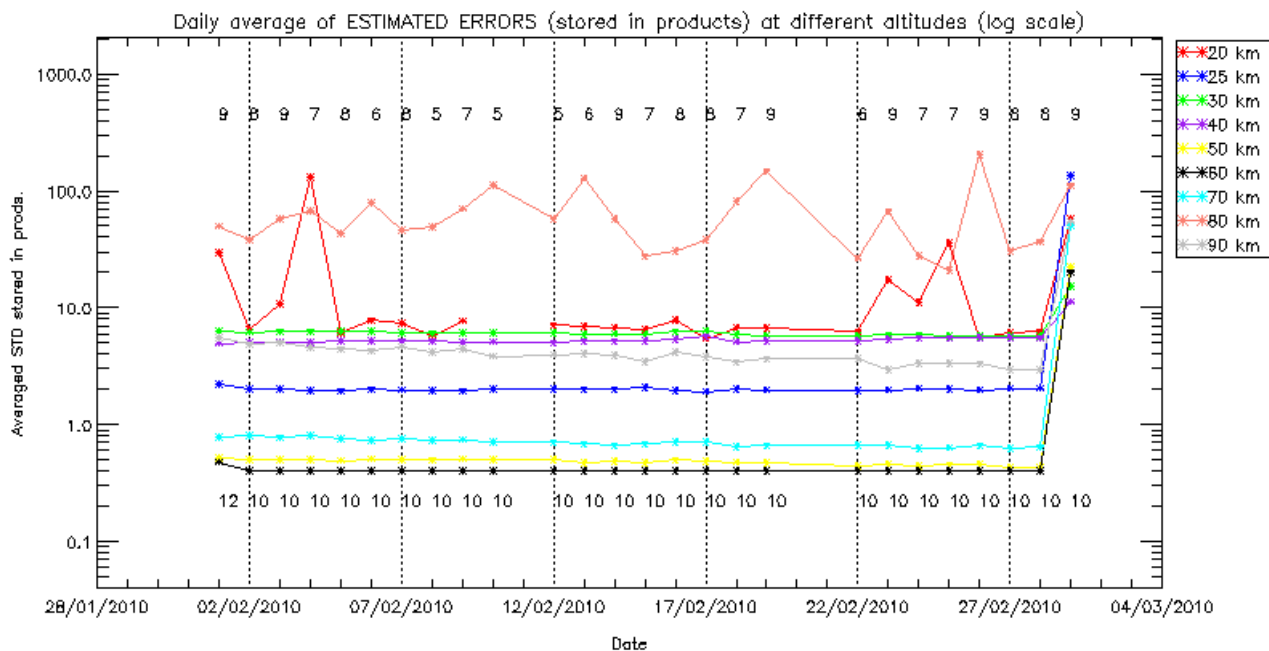


Figure 6.3-4: Daily average of the estimated errors at different altitudes

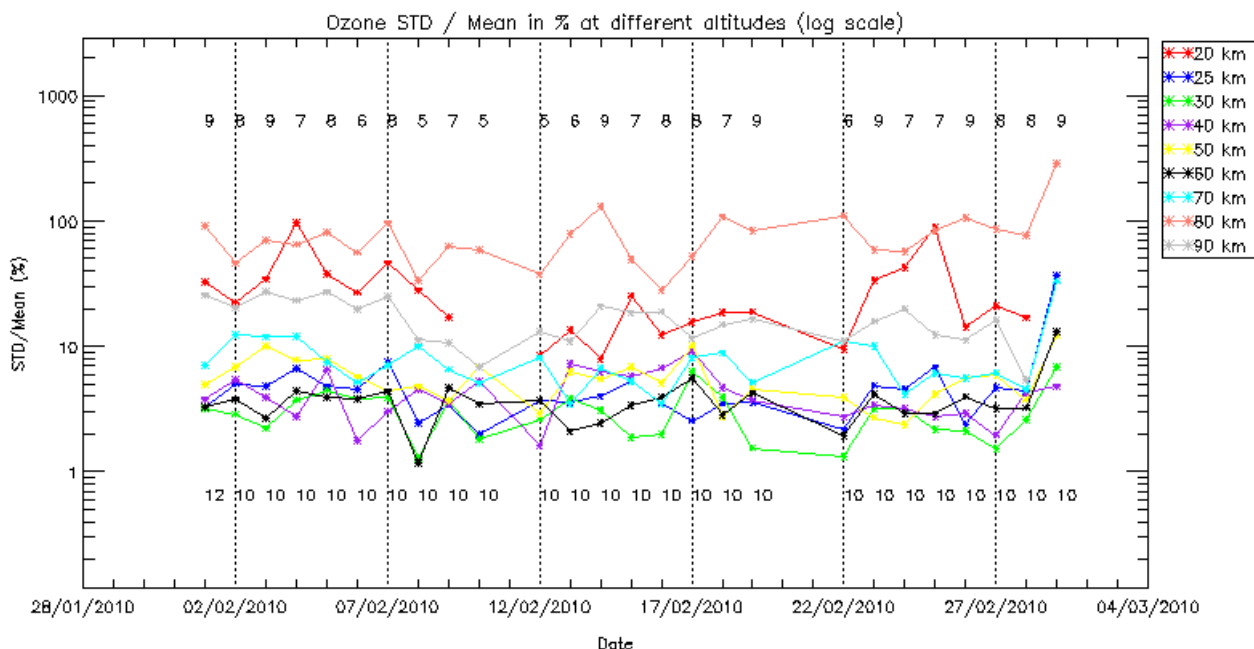


Figure 6.3-5: Daily dispersion defined as STD/Mean in %

7 VALIDATION ACTIVITIES AND RESULTS

7.1 GOMOS-ECMWF Comparisons (Rossana Dragani, ECMWF input)

The full ECMWF validation report is available at the following link:

http://earth.esa.int/pcs/envisat/calval_res/2010/ecmwf_gomos_monthly_201002_all.pdf

A summary of the report is reported in the following paragraph:

- The data volume of GOMOS observations available in February 2010 was smaller than that delivered in January 2010.
- The mean temperature first guess and analysis departures were generally negative and up to -1% at all latitudinal bands and at most levels in the stratosphere, with some exceptions near the tropopause and stratopause. The departures at mesospheric levels were larger than those in the stratosphere, and up to -7% (about -14K) at mid-latitudes in the NH and up to -4% (about -8K) elsewhere. The mean standard deviations of the first-guess and analysis departures were typically within 1 and 2% at all levels and available latitudinal bands.
- The stratospheric ozone first guess and analysis departures were within $\pm 10\%$ at most levels and latitudinal bands. In the mesosphere, the GOMOS ozone residuals were also within $\pm 10\%$ at mid-latitudes in the NH and in the tropics, but larger than 50% at mid-latitudes in the SH that in turn led to large mesospheric departures also in the global mean. The standard deviations of the departures were larger than 10% at all levels and latitudinal bands.
- The comparisons between the GOMOS water vapour retrievals and the ECMWF water vapour first guess and analyses showed a generally poor level of agreement also in February 2010, with GOMOS water vapour observations being from one to four orders of magnitude larger than their model equivalent at most vertical levels and latitudes. Some improvements were found at mid-latitudes in the NH. However, it should be noted that, here, the number of observations was often too low to be statistically significant.
- The monitoring statistics for February were produced with the operational ECMWF model, CY36R1.

APPENDIX A

List of level 1b products that used the Calibration DC maps instead of the DSA observation (only ESRIN production):

Product name	DC information
GOM_TRA_1PNPDE20100201_193212_000000452086_00300_41436_8122.N1	DC map with no T dep.
GOM_TRA_1PNPDE20100201_193357_000000422086_00300_41436_8123.N1	DC map used
GOM_TRA_1PNPDE20100201_193628_000000422086_00300_41436_8124.N1	DC map used
GOM_TRA_1PNPDE20100201_193833_000000412086_00300_41436_8125.N1	DC map used
GOM_TRA_1PNPDE20100201_194254_000000422086_00300_41436_8126.N1	DC map used
GOM_TRA_1PNPDE20100201_195138_000000492086_00300_41436_8127.N1	DC map used
GOM_TRA_1PNPDE20100201_195728_000000392086_00300_41436_8128.N1	DC map used
GOM_TRA_1PNPDE20100201_195920_000000542086_00300_41436_8129.N1	DC map used
GOM_TRA_1PNPDE20100201_201533_000000352086_00300_41436_8130.N1	DC map used
GOM_TRA_1PNPDE20100201_201836_000000372086_00300_41436_8131.N1	DC map used
GOM_TRA_1PNPDE20100201_202320_000000412086_00300_41436_8132.N1	DC map used
GOM_TRA_1PNPDE20100201_202632_000000412086_00300_41436_8133.N1	DC map used
GOM_TRA_1PNPDE20100201_203012_000000362086_00300_41436_8134.N1	DC map used
GOM_TRA_1PNPDE20100201_203826_000000552086_00300_41436_8135.N1	DC map used
GOM_TRA_1PNPDE20100201_204034_000000362086_00300_41436_8136.N1	DC map used
GOM_TRA_1PNPDE20100202_204116_000000422086_00315_41451_8272.N1	DC map used
GOM_TRA_1PNPDE20100202_204300_000000392086_00315_41451_8273.N1	DC map used
GOM_TRA_1PNPDE20100202_204530_000000422086_00315_41451_8274.N1	DC map used
GOM_TRA_1PNPDE20100202_204735_000000412086_00315_41451_8275.N1	DC map used
GOM_TRA_1PNPDE20100202_205156_000000422086_00315_41451_8276.N1	DC map used
GOM_TRA_1PNPDE20100202_210037_000000482086_00315_41451_8277.N1	DC map used
GOM_TRA_1PNPDE20100202_210714_000000412086_00315_41451_8278.N1	DC map used
GOM_TRA_1PNPDE20100202_212432_000000342086_00315_41451_8279.N1	DC map used
GOM_TRA_1PNPDE20100202_212731_000000422086_00315_41451_8280.N1	DC map used
GOM_TRA_1PNPDE20100202_213216_000000412086_00315_41451_8281.N1	DC map used
GOM_TRA_1PNPDE20100202_213530_000000422086_00315_41451_8282.N1	DC map used
GOM_TRA_1PNPDE20100202_213912_000000392086_00315_41451_8283.N1	DC map used
GOM_TRA_1PNPDE20100202_214729_000000442086_00315_41451_8284.N1	DC map used
GOM_TRA_1PNPDE20100202_214938_000000552086_00315_41451_8285.N1	DC map used
GOM_TRA_1PNPDE20100202_215612_000000332086_00315_41451_8286.N1	DC map used
GOM_TRA_1PNPDE20100202_220036_000000522086_00315_41451_8323.N1	DC map used
GOM_TRA_1PNPDE20100202_220626_000000442086_00315_41451_8324.N1	DC map used
GOM_TRA_1PNPDE20100202_221129_000000422086_00316_41452_8325.N1	DC map used
GOM_TRA_1PNPDE20100202_221242_000000432086_00316_41452_8326.N1	DC map used
GOM_TRA_1PNPDE20100202_221605_000000422086_00316_41452_8327.N1	DC map used
GOM_TRA_1PNPDE20100202_221812_000000462086_00316_41452_8328.N1	DC map used
GOM_TRA_1PNPDE20100202_221957_000000382086_00316_41452_8329.N1	DC map used
GOM_TRA_1PNPDE20100202_222152_000000402086_00316_41452_8330.N1	DC map used
GOM_TRA_1PNPDE20100202_222336_000000412086_00316_41452_8331.N1	DC map used
GOM_TRA_1PNPDE20100202_222606_000000432086_00316_41452_8332.N1	DC map used
GOM_TRA_1PNPDE20100202_222811_000000392086_00316_41452_8333.N1	DC map used
GOM_TRA_1PNPDE20100202_223232_000000422086_00316_41452_8334.N1	DC map used
GOM_TRA_1PNPDE20100202_224113_000000472086_00316_41452_8335.N1	DC map used
GOM_TRA_1PNPDE20100202_224750_000000412086_00316_41452_8336.N1	DC map used
GOM_TRA_1PNPDE20100202_230508_000000332086_00316_41452_8337.N1	DC map used
GOM_TRA_1PNPDE20100202_230807_000000412086_00316_41452_8338.N1	DC map used
GOM_TRA_1PNPDE20100202_231251_000000412086_00316_41452_8339.N1	DC map used
GOM_TRA_1PNPDE20100202_231606_000000412086_00316_41452_8340.N1	DC map used
GOM_TRA_1PNPDE20100202_231948_000000352086_00316_41452_8341.N1	DC map used
GOM_TRA_1PNPDE20100202_232805_000000562086_00316_41452_8342.N1	DC map used

GOM_TRA_1PNPDE20100202_233014_000000552086_00316_41452_8343.N1	DC map used
GOM_TRA_1PNPDE20100203_040655_000000382086_00319_41455_8368.N1	DC map used
GOM_TRA_1PNPDE20100203_040953_000000382086_00319_41455_8369.N1	DC map used
GOM_TRA_1PNPDE20100203_041439_000000422086_00319_41455_8370.N1	DC map used
GOM_TRA_1PNPDE20100203_041754_000000392086_00319_41455_8371.N1	DC map used
GOM_TRA_1PNPDE20100203_042137_000000432086_00319_41455_8372.N1	DC map used
GOM_TRA_1PNPDE20100203_042954_000000382086_00319_41455_8373.N1	DC map used
GOM_TRA_1PNPDE20100203_043203_000000452086_00319_41455_8374.N1	DC map used
GOM_TRA_1PNPDE20100203_043838_000000452086_00319_41455_8375.N1	DC map used
GOM_TRA_1PNPDE20100203_044303_000000572086_00319_41455_8376.N1	DC map used
GOM_TRA_1PNPDE20100203_044432_000000482086_00319_41455_8377.N1	DC map used
GOM_TRA_1PNPDE20100203_044853_000000472086_00319_41455_8378.N1	DC map used
GOM_TRA_1PNPDE20100203_045110_000000452086_00320_41456_8379.N1	DC map used
GOM_TRA_1PNPDE20100203_045355_000000562086_00320_41456_8380.N1	DC map used
GOM_TRA_1PNPDE20100203_045509_000000502086_00320_41456_8381.N1	DC map used
GOM_TRA_1PNPDE20100203_045830_000000412086_00320_41456_8382.N1	DC map used
GOM_TRA_1PNPDE20100203_050039_000000512086_00320_41456_8383.N1	DC map used
GOM_TRA_1PNPDE20100203_050222_000000382086_00320_41456_8384.N1	DC map used
GOM_TRA_1PNPDE20100203_050417_000000422086_00320_41456_8385.N1	DC map used
GOM_TRA_1PNPDE20100203_050601_000000412086_00320_41456_8386.N1	DC map used
GOM_TRA_1PNPDE20100203_050831_000000422086_00320_41456_8387.N1	DC map used
GOM_TRA_1PNPDE20100203_051036_000000422086_00320_41456_8388.N1	DC map used
GOM_TRA_1PNPDE20100203_051456_000000422086_00320_41456_8389.N1	DC map used
GOM_TRA_1PNPDE20100203_052337_000000472086_00320_41456_8390.N1	DC map used
GOM_TRA_1PNPDE20100203_053013_000000422086_00320_41456_8391.N1	DC map used
GOM_TRA_1PNPDE20100203_054732_000000372086_00320_41456_8392.N1	DC map used
GOM_TRA_1PNPDE20100203_055029_000000402086_00320_41456_8393.N1	DC map used
GOM_TRA_1PNPDE20100203_201126_000000422086_00329_41465_8499.N1	DC map used
GOM_TRA_1PNPDE20100203_201401_000000462086_00329_41465_8500.N1	DC map used
GOM_TRA_1PNPDE20100203_201601_000000412086_00329_41465_8501.N1	DC map used
GOM_TRA_1PNPDE20100203_202022_000000422086_00329_41465_8502.N1	DC map used
GOM_TRA_1PNPDE20100203_202901_000000482086_00329_41465_8503.N1	DC map used
GOM_TRA_1PNPDE20100203_203535_000000412086_00329_41465_8504.N1	DC map used
GOM_TRA_1PNPDE20100203_205255_000000362086_00329_41465_8505.N1	DC map used
GOM_TRA_1PNPDE20100203_205550_000000422086_00329_41465_8506.N1	DC map used
GOM_TRA_1PNPDE20100203_210036_000000392086_00329_41465_8507.N1	DC map used
GOM_TRA_1PNPDE20100203_210353_000000412086_00329_41465_8508.N1	DC map used
GOM_TRA_1PNPDE20100203_210737_000000392086_00329_41465_8509.N1	DC map used
GOM_TRA_1PNPDE20100203_211557_000000392086_00329_41465_8510.N1	DC map used
GOM_TRA_1PNPDE20100203_211806_000000552086_00329_41465_8511.N1	DC map used
GOM_TRA_1PNPDE20100206_201958_000000462086_00372_41508_9147.N1	DC map used
GOM_TRA_1PNPDE20100206_203448_000000492086_00372_41508_9148.N1	DC map used
GOM_TRA_1PNPDE20100206_210936_000000412086_00372_41508_9149.N1	DC map used
GOM_TRA_1PNPDE20100206_211327_000000372086_00372_41508_9150.N1	DC map used
GOM_TRA_1PNPDE20100206_215017_000000412086_00373_41509_9207.N1	DC map with no T dep.
GOM_TRA_1PNPDE20100206_215144_000000362086_00373_41509_9232.N1	DC map with no T dep.
GOM_TRA_1PNPDE20100207_194826_000000452086_00386_41522_9273.N1	DC map used
GOM_TRA_1PNPDE20100207_203431_000000422086_00386_41522_9274.N1	DC map used
GOM_TRA_1PNPDE20100207_203758_000000392086_00386_41522_9275.N1	DC map used
GOM_TRA_1PNPDE20100207_205023_000000582086_00386_41522_9276.N1	DC map used
GOM_TRA_1PNPDE20100207_205234_000000572086_00386_41522_9277.N1	DC map used
GOM_TRA_1PNPDE20100208_031654_000000602086_00390_41526_9372.N1	DC map used
GOM_TRA_1PNPDE20100208_032021_000000412086_00390_41526_9373.N1	DC map used
GOM_TRA_1PNPDE20100208_033248_000000432086_00390_41526_9374.N1	DC map used
GOM_TRA_1PNPDE20100208_033459_000000572086_00390_41526_9375.N1	DC map used
GOM_TRA_1PNPDE20100208_034150_000000472086_00390_41526_9376.N1	DC map used

GOM_TRA_1PNPDE20100208_034404_000000452086_00390_41526_9377.N1	DC map used
GOM_TRA_1PNPDE20100208_034759_000000412086_00390_41526_9378.N1	DC map used
GOM_TRA_1PNPDE20100208_034948_000000372086_00390_41526_9379.N1	DC map used
GOM_TRA_1PNPDE20100208_035822_000000432086_00391_41527_9380.N1	DC map used
GOM_TRA_1PNPDE20100208_040138_000000452086_00391_41527_9381.N1	DC map used
GOM_TRA_1PNPDE20100208_040403_000000502086_00391_41527_9382.N1	DC map used
GOM_TRA_1PNPDE20100208_042612_000000522086_00391_41527_9383.N1	DC map used
GOM_TRA_1PNPDE20100208_043239_000000412086_00391_41527_9384.N1	DC map used
GOM_TRA_1PNPDE20100208_045241_000000422086_00391_41527_9494.N1	DC map with no T dep.
GOM_TRA_1PNPDE20100208_045729_000000442086_00391_41527_9495.N1	DC map used
GOM_TRA_1PNPDE20100208_050057_000000402086_00391_41527_9496.N1	DC map used
GOM_TRA_1PNPDE20100208_051325_000000442086_00391_41527_9497.N1	DC map used
GOM_TRA_1PNPDE20100208_051536_000000422086_00391_41527_9498.N1	DC map used
GOM_TRA_1PNPDE20100208_052227_000000502086_00391_41527_9499.N1	DC map used
GOM_TRA_1PNPDE20100208_052441_000000402086_00391_41527_9500.N1	DC map used
GOM_TRA_1PNPDE20100208_054215_000000512086_00392_41528_9501.N1	DC map used
GOM_TRA_1PNPDE20100208_054439_000000452086_00392_41528_9502.N1	DC map used
GOM_TRA_1PNPDE20100208_054744_000000462086_00392_41528_9503.N1	DC map used
GOM_TRA_1PNPDE20100208_060648_000000522086_00392_41528_9504.N1	DC map used
GOM_TRA_1PNPDE20100208_063316_000000412086_00392_41528_9505.N1	DC map used
GOM_TRA_1PNPDE20100208_222504_000000432086_00402_41538_9625.N1	DC map used
GOM_TRA_1PNPDE20100208_222819_000000502086_00402_41538_9626.N1	DC map used
GOM_TRA_1PNPDE20100208_223046_000000432086_00402_41538_9627.N1	DC map used
GOM_TRA_1PNPDE20100208_223346_000000402086_00402_41538_9628.N1	DC map used
GOM_TRA_1PNPDE20100208_225248_000000512086_00402_41538_9629.N1	DC map used
GOM_TRA_1PNPDE20100208_225914_000000402086_00402_41538_9630.N1	DC map used
GOM_TRA_1PNPDE20100208_231912_000000422086_00402_41538_9631.N1	DC map used
GOM_TRA_1PNPDE20100208_232402_000000442086_00402_41538_9632.N1	DC map used
GOM_TRA_1PNPDE20100208_232732_000000422086_00402_41538_9633.N1	DC map used
GOM_TRA_1PNPDE20100208_234004_000000432086_00402_41538_9634.N1	DC map used
GOM_TRA_1PNPDE20100208_234215_000000442086_00402_41538_9635.N1	DC map used
GOM_TRA_1PNPDE20100209_024513_000000432086_00404_41540_9693.N1	DC map with no T dep.
GOM_TRA_1PNPDE20100209_024843_000000372086_00404_41540_9694.N1	DC map used
GOM_TRA_1PNPDE20100209_025240_000000372086_00404_41540_9695.N1	DC map used
GOM_TRA_1PNPDE20100209_202237_000000392086_00415_41551_9826.N1	DC map used
GOM_TRA_1PNPDE20100209_203206_000000412086_00415_41551_9827.N1	DC map used
GOM_TRA_1PNPDE20100209_204036_000000502086_00415_41551_9828.N1	DC map used
GOM_TRA_1PNPDE20100209_210425_000000332086_00415_41551_9829.N1	DC map used
GOM_TRA_1PNPDE20100209_210656_000000372086_00415_41551_9830.N1	DC map used
GOM_TRA_1PNPDE20100209_211146_000000452086_00415_41551_9831.N1	DC map used
GOM_TRA_1PNPDE20100209_211518_000000392086_00415_41551_9832.N1	DC map used
GOM_TRA_1PNPDE20100209_212756_000000402086_00415_41551_9833.N1	DC map used
GOM_TRA_1PNPDE20100209_213008_000000432086_00415_41551_9834.N1	DC map used
GOM_TRA_1PNPDE20100211_210006_000000412086_00444_41580_0265.N1	DC map used
GOM_TRA_1PNPDE20100211_210326_000000462086_00444_41580_0266.N1	DC map used
GOM_TRA_1PNPDE20100211_210932_000000402086_00444_41580_0267.N1	DC map used
GOM_TRA_1PNPDE20100211_211336_000000532086_00444_41580_0268.N1	DC map used
GOM_TRA_1PNPDE20100211_214147_000000332086_00444_41580_0269.N1	DC map used
GOM_TRA_1PNPDE20100211_214900_000000452086_00444_41580_0270.N1	DC map used
GOM_TRA_1PNPDE20100211_215237_000000382086_00444_41580_0271.N1	DC map used
GOM_TRA_1PNPDE20100211_215641_000000372086_00444_41580_0272.N1	DC map used
GOM_TRA_1PNPDE20100211_220330_000000522086_00444_41580_0273.N1	DC map used
GOM_TRA_1PNPDE20100211_220529_000000442086_00444_41580_0274.N1	DC map used
GOM_TRA_1PNPDE20100211_220742_000000442086_00444_41580_0275.N1	DC map used
GOM_TRA_1PNPDE20100212_202833_000000432086_00458_41594_0465.N1	DC map with no T dep.
GOM_TRA_1PNPDE20100212_203153_000000462086_00458_41594_0466.N1	DC map used

GOM_TRA_1PNPDE20100212_204159_000000532086_00458_41594_0467.N1	DC map used
GOM_TRA_1PNPDE20100212_205246_000000402086_00458_41594_0468.N1	DC map used
GOM_TRA_1PNPDE20100212_211010_000000332086_00458_41594_0469.N1	DC map used
GOM_TRA_1PNPDE20100212_211227_000000372086_00458_41594_0470.N1	DC map used
GOM_TRA_1PNPDE20100212_211719_000000402086_00458_41594_0471.N1	DC map used
GOM_TRA_1PNPDE20100212_212058_000000372086_00458_41594_0472.N1	DC map used
GOM_TRA_1PNPDE20100212_212505_000000422086_00458_41594_0473.N1	DC map used
GOM_TRA_1PNPDE20100212_213156_000000522086_00458_41594_0474.N1	DC map used
GOM_TRA_1PNPDE20100212_213612_000000482086_00458_41594_0475.N1	DC map used
GOM_TRA_1PNPDE20100213_201022_000000532086_00472_41608_0671.N1	DC map used
GOM_TRA_1PNPDE20100213_204046_000000372086_00472_41608_0672.N1	DC map used
GOM_TRA_1PNPDE20100213_204920_000000432086_00472_41608_0673.N1	DC map used
GOM_TRA_1PNPDE20100213_205330_000000392086_00472_41608_0674.N1	DC map used
GOM_TRA_1PNPDE20100214_211921_000000552086_00487_41623_0905.N1	DC map used
GOM_TRA_1PNPDE20100214_214940_000000422086_00487_41623_0906.N1	DC map used
GOM_TRA_1PNPDE20100214_215817_000000372086_00487_41623_0907.N1	DC map used
GOM_TRA_1PNPDE20100214_220230_000000362086_00487_41623_0908.N1	DC map used
GOM_TRA_1PNPDE20100214_221348_000000502086_00487_41623_0909.N1	DC map used
GOM_TRA_1PNPDE20100216_200239_000000442087_00014_41651_9561.N1	DC map used
GOM_TRA_1PNPDE20100216_201608_000000502087_00014_41651_9562.N1	DC map used
GOM_TRA_1PNPDE20100216_204618_000000392087_00014_41651_9563.N1	DC map used
GOM_TRA_1PNPDE20100216_205459_000000442087_00014_41651_9564.N1	DC map used
GOM_TRA_1PNPDE20100216_205918_000000372087_00014_41651_9565.N1	DC map used
GOM_TRA_1PNPDE20100216_211049_000000512087_00014_41651_9566.N1	DC map used
GOM_TRA_1PNPDE20100217_212508_000000482087_00029_41666_9781.N1	DC map used
GOM_TRA_1PNPDE20100217_215512_000000422087_00029_41666_9782.N1	DC map used
GOM_TRA_1PNPDE20100217_220356_000000442087_00029_41666_9783.N1	DC map used
GOM_TRA_1PNPDE20100217_220818_000000382087_00029_41666_9784.N1	DC map used
GOM_TRA_1PNPDE20100217_221956_000000402087_00029_41666_9785.N1	DC map used
GOM_TRA_1PNPDE20100218_204013_000000452087_00043_41680_9989.N1	DC map with no T dep.
GOM_TRA_1PNPDE20100218_205331_000000472087_00043_41680_9990.N1	DC map used
GOM_TRA_1PNPDE20100218_212331_000000402087_00043_41680_9991.N1	DC map used
GOM_TRA_1PNPDE20100218_213217_000000612087_00043_41680_9992.N1	DC map used
GOM_TRA_1PNPDE20100218_213642_000000372087_00043_41680_9993.N1	DC map used
GOM_TRA_1PNPDE20100219_201209_000000442087_00057_41694_0202.N1	DC map used
GOM_TRA_1PNPDE20100219_202155_000000462087_00057_41694_0203.N1	DC map used
GOM_TRA_1PNPDE20100219_205004_000000332087_00057_41694_0204.N1	DC map used
GOM_TRA_1PNPDE20100219_205149_000000372087_00057_41694_0205.N1	DC map used
GOM_TRA_1PNPDE20100219_210038_000000452087_00057_41694_0206.N1	DC map used
GOM_TRA_1PNPDE20100219_210506_000000372087_00057_41694_0207.N1	DC map used
GOM_TRA_1PNPDE20100219_211212_000000352087_00057_41694_0208.N1	DC map used
GOM_TRA_1PNPDE20100222_202743_000000462087_00100_41737_0880.N1	DC map used
GOM_TRA_1PNPDE20100222_203742_000000422087_00100_41737_0881.N1	DC map used
GOM_TRA_1PNPDE20100222_205020_000000422087_00100_41737_0882.N1	DC map used
GOM_TRA_1PNPDE20100222_205720_000000432087_00100_41737_0883.N1	DC map used
GOM_TRA_1PNPDE20100222_210646_000000442087_00100_41737_0884.N1	DC map used
GOM_TRA_1PNPDE20100222_211054_000000402087_00100_41737_0885.N1	DC map used
GOM_TRA_1PNPDE20100222_211808_000000372087_00100_41737_0886.N1	DC map used
GOM_TRA_1PNPDE20100223_194312_000000452087_00114_41751_1234.N1	DC map used
GOM_TRA_1PNPDE20100223_195607_000000472087_00114_41751_1235.N1	DC map used
GOM_TRA_1PNPDE20100223_200602_000000412087_00114_41751_1236.N1	DC map used
GOM_TRA_1PNPDE20100223_201836_000000442087_00114_41751_1237.N1	DC map used
GOM_TRA_1PNPDE20100223_202539_000000432087_00114_41751_1238.N1	DC map used
GOM_TRA_1PNPDE20100223_203507_000000462087_00114_41751_1239.N1	DC map used
GOM_TRA_1PNPDE20100223_203918_000000412087_00114_41751_1240.N1	DC map used
GOM_TRA_1PNPDE20100223_204635_000000382087_00114_41751_1241.N1	DC map used

GOM_TRA_1PNPDE20100224_210507_000000452087_00129_41766_1437.NI	DC map used
GOM_TRA_1PNPDE20100224_211456_000000412087_00129_41766_1438.NI	DC map used
GOM_TRA_1PNPDE20100224_212729_000000432087_00129_41766_1439.NI	DC map used
GOM_TRA_1PNPDE20100224_213433_000000442087_00129_41766_1440.NI	DC map used
GOM_TRA_1PNPDE20100224_214404_000000612087_00129_41766_1441.NI	DC map used
GOM_TRA_1PNPDE20100224_214818_000000442087_00129_41766_1442.NI	DC map used
GOM_TRA_1PNPDE20100224_215538_000000552087_00129_41766_1443.NI	DC map used
GOM_TRA_1PNPDE20100225_203331_000000472087_00143_41780_1695.NI	DC map used
GOM_TRA_1PNPDE20100225_203957_000000472087_00143_41780_1696.NI	DC map used
GOM_TRA_1PNPDE20100225_204316_000000392087_00143_41780_1697.NI	DC map used
GOM_TRA_1PNPDE20100225_205155_000000452087_00143_41780_1698.NI	DC map used
GOM_TRA_1PNPDE20100225_205429_000000442087_00143_41780_1699.NI	DC map used
GOM_TRA_1PNPDE20100225_210251_000000402087_00143_41780_1700.NI	DC map used
GOM_TRA_1PNPDE20100225_210738_000000462087_00143_41780_1701.NI	DC map used
GOM_TRA_1PNPDE20100225_211152_000000472087_00143_41780_1702.NI	DC map used
GOM_TRA_1PNPDE20100225_211642_000000442087_00143_41780_1703.NI	DC map used
GOM_TRA_1PNPDE20100225_212405_000000562087_00143_41780_1704.NI	DC map used
GOM_TRA_1PNPDE20100226_200156_000000492087_00157_41794_1967.NI	DC map used
GOM_TRA_1PNPDE20100226_200817_000000462087_00157_41794_1968.NI	DC map used
GOM_TRA_1PNPDE20100226_201137_000000412087_00157_41794_1969.NI	DC map used
GOM_TRA_1PNPDE20100226_202007_000000452087_00157_41794_1970.NI	DC map used
GOM_TRA_1PNPDE20100226_202245_000000422087_00157_41794_1971.NI	DC map used
GOM_TRA_1PNPDE20100226_202412_000000462087_00157_41794_1972.NI	DC map used
GOM_TRA_1PNPDE20100226_203110_000000592087_00157_41794_1973.NI	DC map used
GOM_TRA_1PNPDE20100226_203555_000000482087_00157_41794_1974.NI	DC map used
GOM_TRA_1PNPDE20100226_204012_000000452087_00157_41794_1975.NI	DC map used
GOM_TRA_1PNPDE20100226_204256_000000532087_00157_41794_1976.NI	DC map used
GOM_TRA_1PNPDE20100226_204506_000000442087_00157_41794_1977.NI	DC map used
GOM_TRA_1PNPDE20100226_205232_000000382087_00157_41794_1978.NI	DC map used
GOM_TRA_1PNPDE20100227_211713_000000442087_00172_41809_2199.NI	DC map used
GOM_TRA_1PNPDE20100227_211953_000000462087_00172_41809_2200.NI	DC map used
GOM_TRA_1PNPDE20100227_212856_000000482087_00172_41809_2201.NI	DC map used
GOM_TRA_1PNPDE20100227_213137_000000412087_00172_41809_2202.NI	DC map used
GOM_TRA_1PNPDE20100227_213259_000000472087_00172_41809_2203.NI	DC map used
GOM_TRA_1PNPDE20100227_214004_000000402087_00172_41809_2204.NI	DC map used
GOM_TRA_1PNPDE20100227_214448_000000482087_00172_41809_2205.NI	DC map used
GOM_TRA_1PNPDE20100227_214907_000000452087_00172_41809_2206.NI	DC map used
GOM_TRA_1PNPDE20100227_215156_000000362087_00172_41809_2207.NI	DC map used
GOM_TRA_1PNPDE20100227_215406_000000452087_00172_41809_2208.NI	DC map used
GOM_TRA_1PNPDE20100227_220136_000000572087_00172_41809_2209.NI	DC map used
GOM_TRA_1PNPDE20100228_013422_000000442087_00174_41811_2265.NI	DC map used
GOM_TRA_1PNPDE20100228_014014_000000452087_00174_41811_2266.NI	DC map used
GOM_TRA_1PNPDE20100228_014216_000000572087_00174_41811_2267.NI	DC map used
GOM_TRA_1PNPDE20100228_014810_000000492087_00175_41812_2268.NI	DC map used
GOM_TRA_1PNPDE20100228_015036_000000462087_00175_41812_2269.NI	DC map used
GOM_TRA_1PNPDE20100228_015155_000000432087_00175_41812_2270.NI	DC map used
GOM_TRA_1PNPDE20100228_015341_000000432087_00175_41812_2271.NI	DC map used
GOM_TRA_1PNPDE20100228_015533_000000562087_00175_41812_2272.NI	DC map used
GOM_TRA_1PNPDE20100228_015656_000000462087_00175_41812_2273.NI	DC map used
GOM_TRA_1PNPDE20100228_021900_000000462087_00175_41812_2274.NI	DC map used
GOM_TRA_1PNPDE20100228_022139_000000462087_00175_41812_2275.NI	DC map used
GOM_TRA_1PNPDE20100228_023041_000000462087_00175_41812_2276.NI	DC map used
GOM_TRA_1PNPDE20100228_024150_000000402087_00175_41812_2277.NI	DC map used
GOM_TRA_1PNPDE20100228_024634_000000462087_00175_41812_2278.NI	DC map used
GOM_TRA_1PNPDE20100228_204533_000000452087_00186_41823_2467.NI	DC map used
GOM_TRA_1PNPDE20100228_204811_000000442087_00186_41823_2468.NI	DC map used

GOM_TRA_1PNPDE20100228_205709_000000452087_00186_41823_2469.N1	DC map used
GOM_TRA_1PNPDE20100228_205953_000000422087_00186_41823_2470.N1	DC map used
GOM_TRA_1PNPDE20100228_210822_000000432087_00186_41823_2471.N1	DC map used
GOM_TRA_1PNPDE20100228_211305_000000482087_00186_41823_2472.N1	DC map used
GOM_TRA_1PNPDE20100228_211727_000000422087_00186_41823_2473.N1	DC map used
GOM_TRA_1PNPDE20100228_212020_000000342087_00186_41823_2474.N1	DC map used
GOM_TRA_1PNPDE20100228_212229_000000402087_00186_41823_2475.N1	DC map used
GOM_TRA_1PNPDE20100228_213004_000000392087_00186_41823_2476.N1	DC map used